

# Indiana's Employment and Labor Force Estimates April 2020

05/20/2020

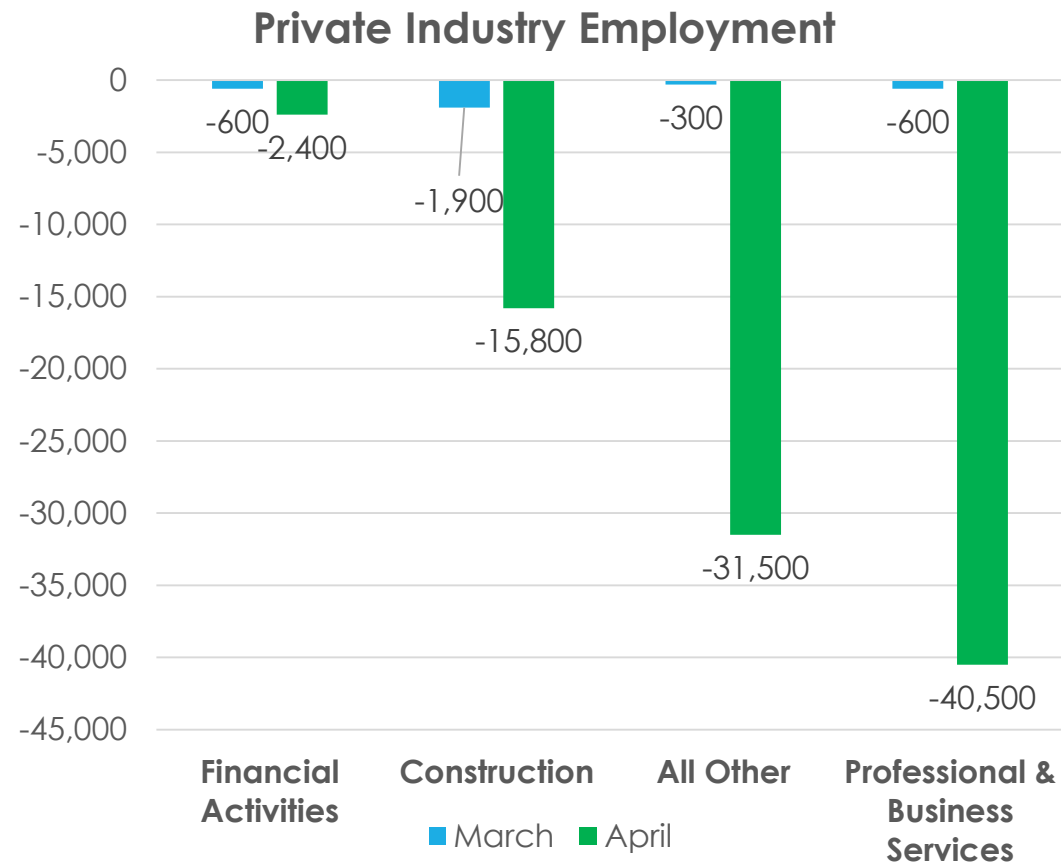
# Key Points

- **Indiana's unemployment rate stands at 16.9% in April 2020. The U.S. is at 14.7%.**
- **Indiana's Labor Force is at 3,237,228.**
- Indiana's Labor Force decreased 40,450 due to a decrease in employment of 486,467 and an increase in unemployment of 446,017.
- Indiana's Labor Force has decreased 145,271 over the year.
- Indiana's Labor Force Participation Rate is at 61.4%. This is above the U.S. Labor Force Participation Rate of 60.2%.

# Key Points: April 2020

## Indiana's Private Employment

- Decreased by 380,500 jobs over the month and had loses of 405,200 over the year.
- April private employment = 2,334,900.



## Revisions to March 2020 Estimates

Revisions to March 2020 Estimates						
INDUSTRY TITLE	Feb	Mar Prel	Mar Rev	Revision	Chg from Feb	Pre Chg fromFeb
Total Nonfarm	3179.6	3162.0	3147.2	-14.8	-32.4	-17.6
Total Private	2746.0	2727.3	2715.4	-11.9	-30.6	-18.7
Goods Producing	693.2	688.6	682.6	-6.0	-10.6	-4.6
Service-Providing	2486.4	2473.4	2464.6	-8.8	-21.8	-13.0
Private Service Providing	2052.8	2038.7	2032.8	-5.9	-20.0	-14.1
Construction	152.3	150.4	149.1	-1.3	-3.2	-1.9
Manufacturing	535.1	532.5	527.9	-4.6	-7.2	-2.6
Trade, Transportation, and Utilities	601.8	597.6	598.9	1.3	-2.9	-4.2
Wholesale Trade	123.1	122.5	122.3	-0.2	-0.8	-0.6
Retail Trade	316.7	312.9	315.1	2.2	-1.6	-3.8
Transportation, Warehousing, and Utilities	162.0	162.2	161.5	-0.7	-0.5	0.2
Information	28.6	28.6	28.6	0.0	0.0	0.0
Financial Activities	143.0	142.4	141.6	-0.8	-1.4	-0.6
Finance and Insurance	106.7	106.4	106.1	-0.3	-0.6	-0.3
Real Estate and Rental and Leasing	36.3	36.0	35.5	-0.5	-0.8	-0.3
Professional and Business Services	343.1	342.5	342.0	-0.5	-1.1	-0.6
Professional, Scientific, and Technical Services	125.5	125.2	125.3	0.1	-0.2	-0.3
Management of Companies and Enterprises	34.4	34.3	34.2	-0.1	-0.2	-0.1
Admin & Support & Waste Mgmt & Remediation Services	183.2	183.0	182.5	-0.5	-0.7	-0.2
Education and Health Services	487.2	486.1	485.1	-1.0	-2.1	-1.1
Educational Services	65.9	65.7	64.8	-0.9	-1.1	-0.2
Health Care and Social Assistance	421.3	420.4	420.3	-0.1	-1.0	-0.9
Leisure and Hospitality	314.3	306.9	302.7	-4.2	-11.6	-7.4
Other Services	134.8	134.6	133.9	-0.7	-0.9	-0.2
Government	433.6	434.7	431.8	-2.9	-1.8	1.1

# Comparing Local Area Unemployment Statistics (LAUS) and Current Employment Statistics (CES)

## **LAUS** (Labor Force by Residence)

**This counts people, not jobs, and is...**

- An estimate of employment based on where the employee lives, rather than where they work
- Used in calculating the labor force

## **CES** (Employment by Job)

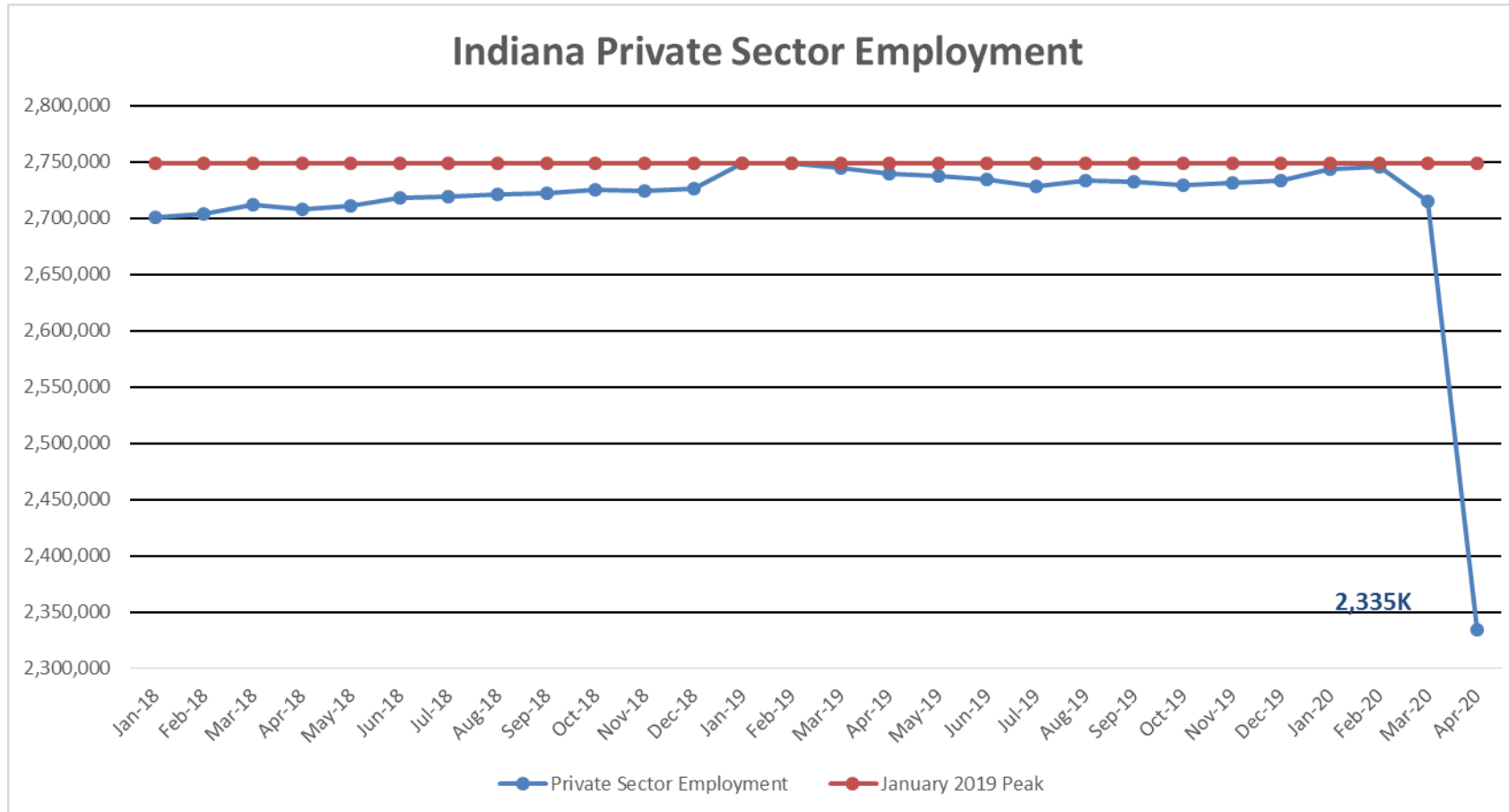
**This counts jobs, not people, and is...**

- An estimate of employment based on the location of the job regardless of the worker's residence
- Also called nonag wage and salary or nonfarm employment
- Used in Quarterly Census of Employment and Wages (QCEW), Occupational Employment Statistics (OES) and CES data

# CES Monthly Jobs Report

# Indiana Private Sector Employment

**April 2020 total private employment is 414,400 below the January 2019 peak.**  
**Covid-19 Pandemic drops employment to lowest level since February 2010**



# Indiana Private Sector Employment Change

**April 2020 decreased by 380,500 jobs over the month and is down 405,200 jobs over the year.**

IN Employment Change Over the Month, Year-to-Date and Over the Year (seasonally adjusted)

Industry	April 2019	December 2019	March 2020	April 2020	Month Change	Y-to-D Change	Y-to-Y Change
Private Educational & Health Services	479.9	484.1	485.1	430.9	-54.2	-53.2	-49.0
.....Private Educational Services	65.3	63.2	64.8	51.3	-13.5	-11.9	-14.0
.....Health Care & Social Assistance	414.6	420.9	420.3	379.6	-40.7	-41.3	-35.0
Manufacturing	543.6	539.5	527.9	449.7	-78.2	-89.8	-93.9
Professional & Business Services	345.4	343.1	342.0	301.5	-40.5	-41.6	-43.9
Financial Activities	141.7	141.1	141.6	139.2	-2.4	-1.9	-2.5
Construction	145.7	148.0	149.1	133.3	-15.8	-14.7	-12.4
Leisure and Hospitality	313.9	309.6	302.7	186.7	-116.0	-122.9	-127.2
Trade, Transportation & Utilities	601.1	598.9	598.9	557.0	-41.9	-41.9	-44.1
.....Trade	441.3	437.8	437.4	403.3	-34.1	-34.5	-38.0
.....Transportation, Warehousing & Utilities	159.8	161.1	161.5	153.7	-7.8	-7.4	-6.1
All Other	168.8	169.2	168.1	136.6	-31.5	-32.6	-32.2
Total Private	2,740.1	2,733.5	2,715.4	2,334.9	-380.5	-398.6	-405.2
Government (Includes Public Schools & Hospitals)	425.2	429.5	431.8	409.9	-21.9	-19.6	-15.3
Total Nonfarm	3,165.3	3,163.0	3,147.2	2,744.8	-402.4	-418.2	-420.5
United States Total Private	127,939.0	129,319.0	128,865.0	109,308.0	19,557.0	20,011.0	18,631.0

- Leisure & Hospitality **lost 116,000** jobs over the month.
- Manufacturing **lost 78,200** jobs over the month

Source: Current Employment Statistics (seasonally adjusted)

For month to month change, [visit this link.](#)



## Indiana Private Sector Employment Change From Peak and Trough

**April 2020 estimates show Indiana private jobs decreased 414,400 since January 2019.**

IN Statewide Estimates (seasonally adjusted) -- April 2020

Supersector	Private Empl. Peak Jan 2019	Private Empl. Trough July 2009	March 2020	April 2020	Month to Month Change	Change Since Peak	Change Since Trough	% Month to Month Change
Private Educational & Health Services	479.7	411.1	485.1	430.9	-54.2	-48.8	19.8	-11.2%
.....Private Educational Services	65.5	63.3	64.8	51.3	-13.5	-14.2	-12.0	-20.8%
.....Health Care & Social Assistance	414.2	347.8	420.3	379.6	-40.7	-34.6	31.8	-9.7%
Manufacturing	545.1	427.3	527.9	449.7	-78.2	-95.4	22.4	-14.8%
Professional & Business Services	344.9	256.8	342.0	301.5	-40.5	-43.4	44.7	-11.8%
Financial Activities	140.7	130.7	141.6	139.2	-2.4	-1.5	8.5	-1.7%
Construction	147.6	117.4	149.1	133.3	-15.8	-14.3	15.9	-10.6%
Leisure and Hospitality	317.4	276.8	302.7	186.7	-116.0	-130.7	-90.1	-38.3%
Trade, Transportation & Utilities	603.9	545.6	598.9	557.0	-41.9	-46.9	11.4	-7.0%
.....Trade	443.9	421.5	437.4	403.3	-34.1	-40.6	-18.2	-7.8%
.....Transportation, Warehousing & Utilities	160.0	124.1	161.5	153.7	-7.8	-6.3	29.6	-4.8%
All Other	170.0	161.7	168.1	136.6	-31.5	-33.4	-25.1	-18.7%
<b>Total Private</b>	<b>2,749.3</b>	<b>2,327.4</b>	<b>2,715.4</b>	<b>2,334.9</b>	<b>-380.5</b>	<b>-414.4</b>	<b>7.5</b>	<b>-14.0%</b>
Government (Includes Public Schools & Hospitals)	429.9	434.5	431.8	409.9	-21.9	-20.0	-24.6	-5.1%
<b>Total Nonfarm</b>	<b>3,179.2</b>	<b>2,761.9</b>	<b>3,147.2</b>	<b>2,744.8</b>	<b>-402.4</b>	<b>-434.4</b>	<b>-17.1</b>	<b>-12.8%</b>
<b>United States Total Private</b>	<b>127,628.0</b>	<b>108,147.0</b>	<b>128,865.0</b>	<b>109,308.0</b>	<b>-19,557.0</b>	<b>-18,320.0</b>	<b>1,161.0</b>	<b>-15.1%</b>

- Manufacturing lost 78,200 jobs over the month, due to the Covid-19 shut down.

For historical data, [visit this link.](#)

Source: Current Employment Statistics (seasonally adjusted)

## Indiana Private Sector Employment Change Compared to U.S.

**April 2020 Indiana private sector contracted by 14% compared to the U.S. contracting by 15.2%.**

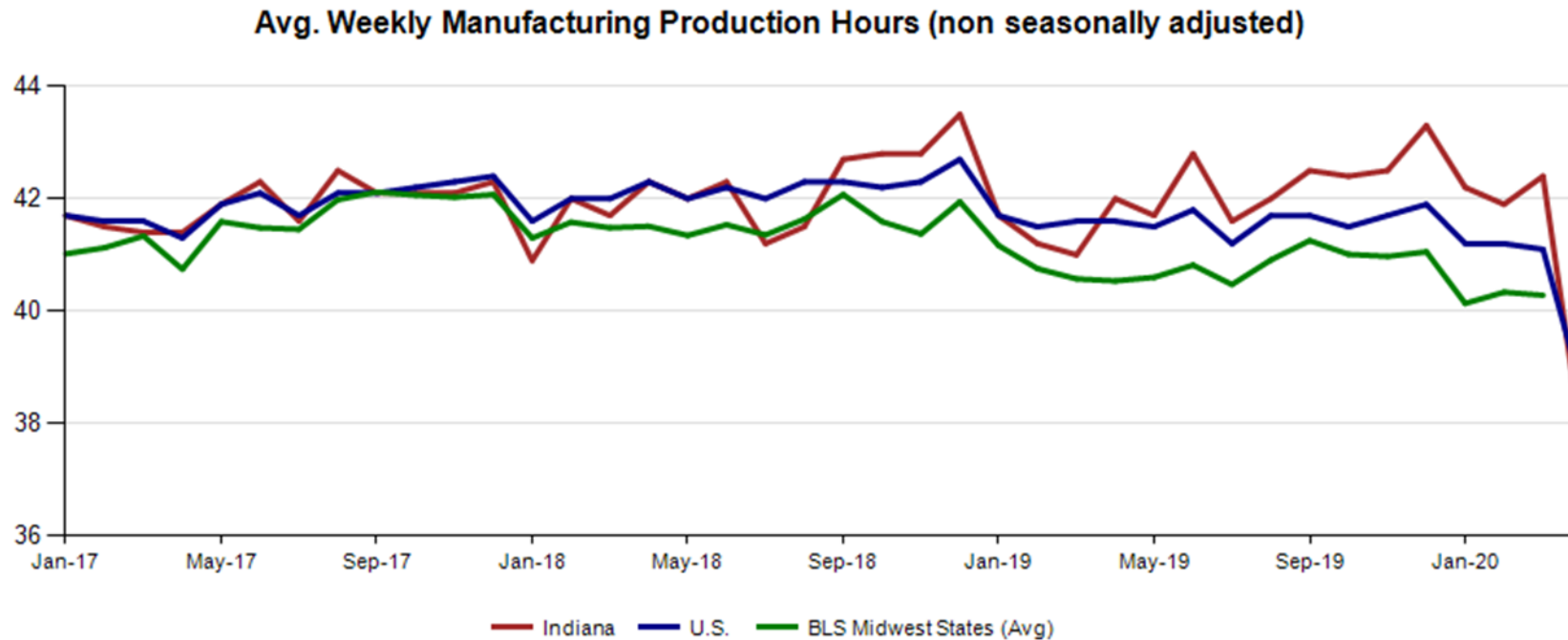
### IN Employment Change Compared to the U.S.

Industry	Indiana Month to Month	U.S. Month to Month	Indiana vs U.S. Change	Indiana Year-to-Date	U.S. Year-to-Date	Indiana vs U.S. Change	Indiana Year-to-Year	U.S. Year-to-Year	Indiana vs U.S. Change
Private Educational & Health Services	-11.2%	-10.4%	UNDER	-11.0%	-10.3%	UNDER	-10.2%	-8.8%	UNDER
.....Private Educational Services	-20.8%	-12.1%	UNDER	-18.8%	-12.5%	UNDER	-21.4%	-10.8%	UNDER
.....Health Care & Social Assistance	-9.7%	-10.1%	OVER	-9.8%	-9.9%	OVER	-8.4%	-8.4%	UNDER
Manufacturing	-14.8%	-10.4%	UNDER	-16.6%	-10.7%	UNDER	-17.3%	-10.5%	UNDER
Professional & Business Services	-11.8%	-10.1%	UNDER	-12.1%	-10.2%	UNDER	-12.7%	-9.1%	UNDER
Financial Activities	-1.7%	-3.0%	OVER	-1.3%	-2.7%	OVER	-1.8%	-1.6%	UNDER
Construction	-10.6%	-12.8%	OVER	-9.9%	-12.2%	OVER	-8.5%	-11.2%	OVER
Leisure and Hospitality	-38.3%	-46.8%	OVER	-39.7%	-48.1%	OVER	-40.5%	-47.2%	OVER
Trade, Transportation & Utilities	-7.0%	-11.0%	OVER	-7.0%	-11.1%	OVER	-7.3%	-10.7%	OVER
.....Trade	-7.8%	-11.5%	OVER	-7.9%	-11.6%	OVER	-8.6%	-11.3%	OVER
.....Transportation, Warehousing & Utils	-4.8%	-9.4%	OVER	-4.6%	-9.3%	OVER	-3.8%	-8.4%	OVER
All Other	-18.7%	-16.5%	UNDER	-19.3%	-16.7%	UNDER	-19.1%	-16.3%	UNDER
Total Private	-14.0%	-15.2%	OVER	-14.6%	-15.5%	OVER	-14.8%	-14.5%	UNDER
Government (Includes Public Schools & Hospitals)	-5.1%	-4.3%	UNDER	-4.6%	-4.2%	UNDER	-3.6%	-3.6%	OVER
Total Nonfarm	-12.8%	-13.5%	OVER	-13.2%	-13.8%	OVER	-13.3%	-12.9%	UNDER

Source: Current Employment Statistics (seasonally adjusted)

# Avg. Weekly Manufacturing Production Hours

**April 2020 average weekly hours for Indiana manufacturing production hours decreased by 4.7 hours to 37.7 hours. National manufacturing hours declined by 2.5 hours to 38.6 weekly hours, and Midwest states remained unchanged. (March 2020 data).**



# Monthly Labor Force Report

## Jobs Data for April 2020

Month NSA	Labor Force	Employed	Unemployed	IN Rate	Total NonFarm	Total Private	Regular UI Claims
Dec-16	3,288,631	3,161,080	127,551	3.9	3,118,700	2,681,300	24,599
Apr-20	3,230,276	2,676,336	553,940	17.1	2,753,400	2,334,000	252,250
Change	(58,355)	(484,744)	426,389	13.2	(365,300)	(347,300)	227,651

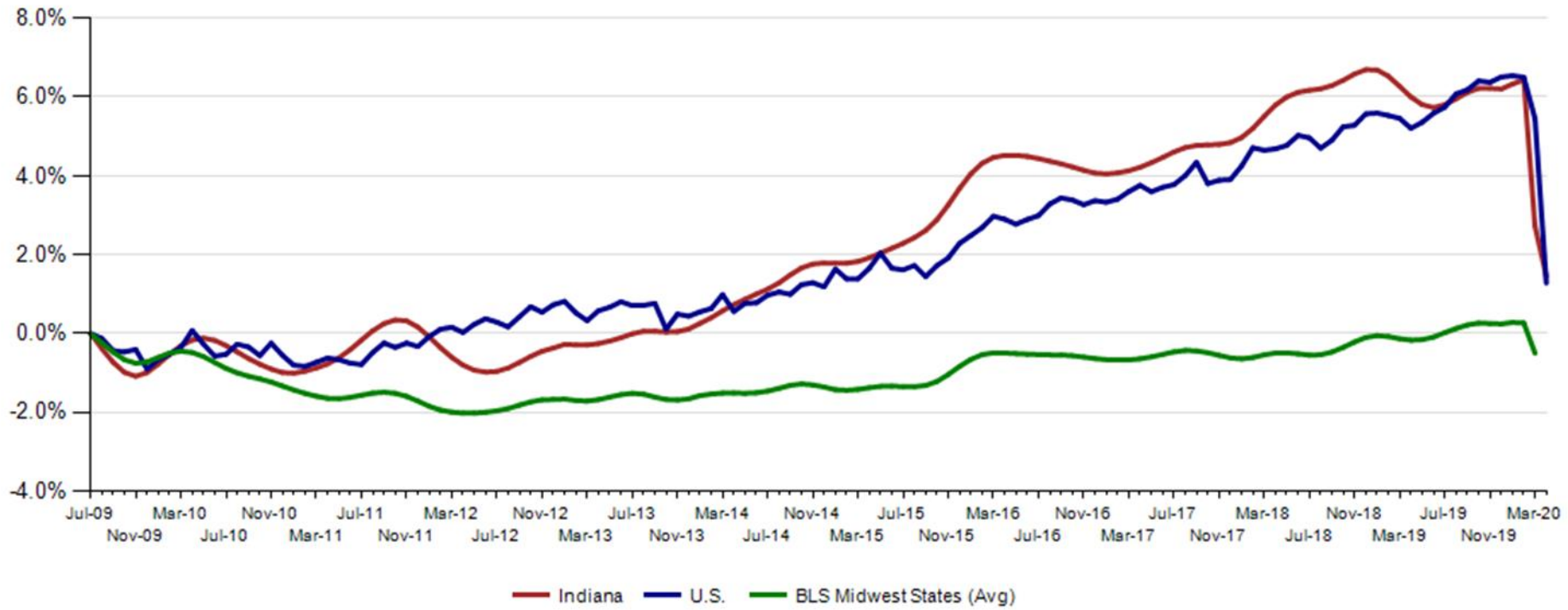
Month SA	Labor Force	Employed	Unemployed	IN Rate	Total NonFarm	Total Private	Regular UI Claims
Dec-16	3,320,863	3,187,493	133,370	4.0	3,094,300	2,667,700	24,599
Apr-20	3,237,228	2,691,319	545,909	16.9	2,744,800	2,334,900	252,250
Change	(83,635)	(496,174)	412,539	12.9	(349,500)	(332,800)	227,651

## Indiana Labor Force Pct. Growth Since July '09 Indiana Trough

April 2020 Indiana Seasonally Adjusted Labor Force stands at 3,237,228.

- Employed labor force **decreased 486,467** over the month.
- Unemployment **increased** by 446,017 over the month.

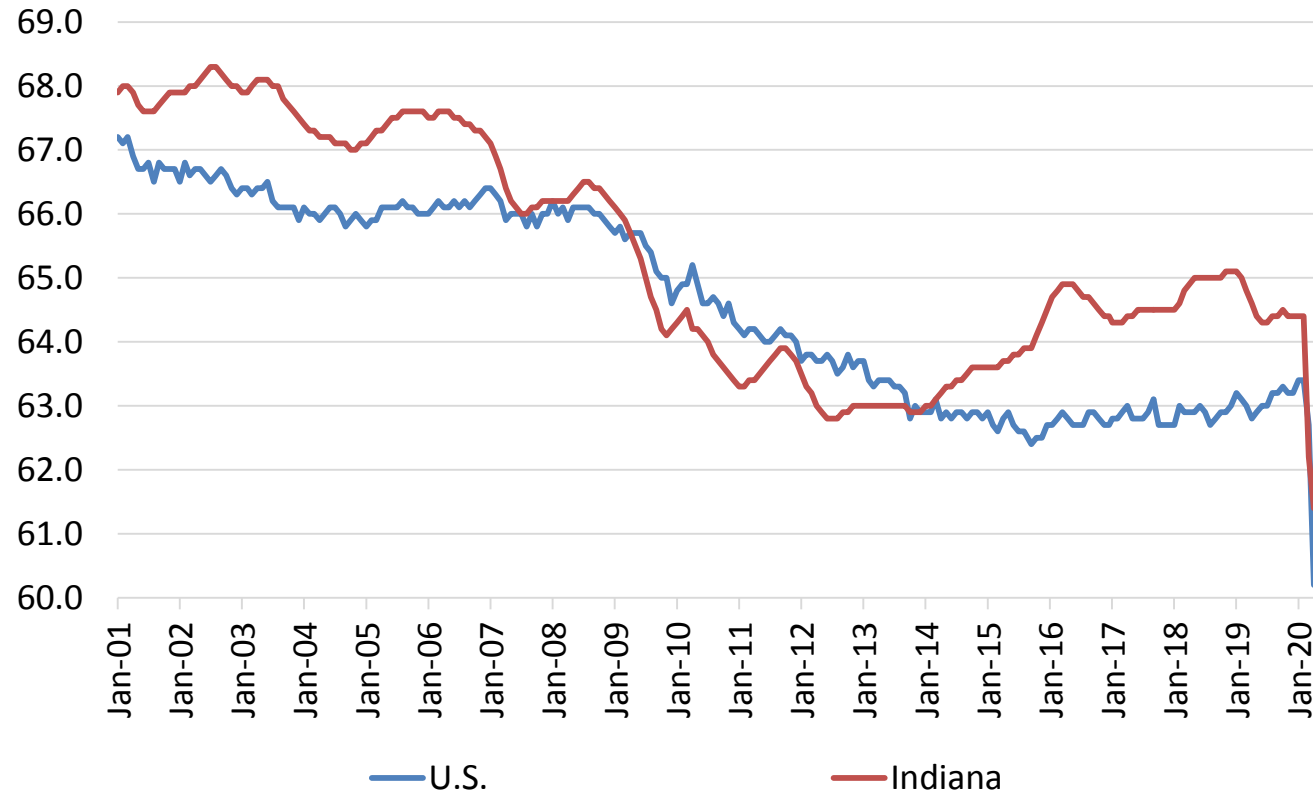
Labor Force Change Since July 2009 Indiana Trough (seasonally adjusted)



Source: Current Employment Statistics (seasonally adjusted)

## Indiana Labor Force Participation Rate Compared to U.S.

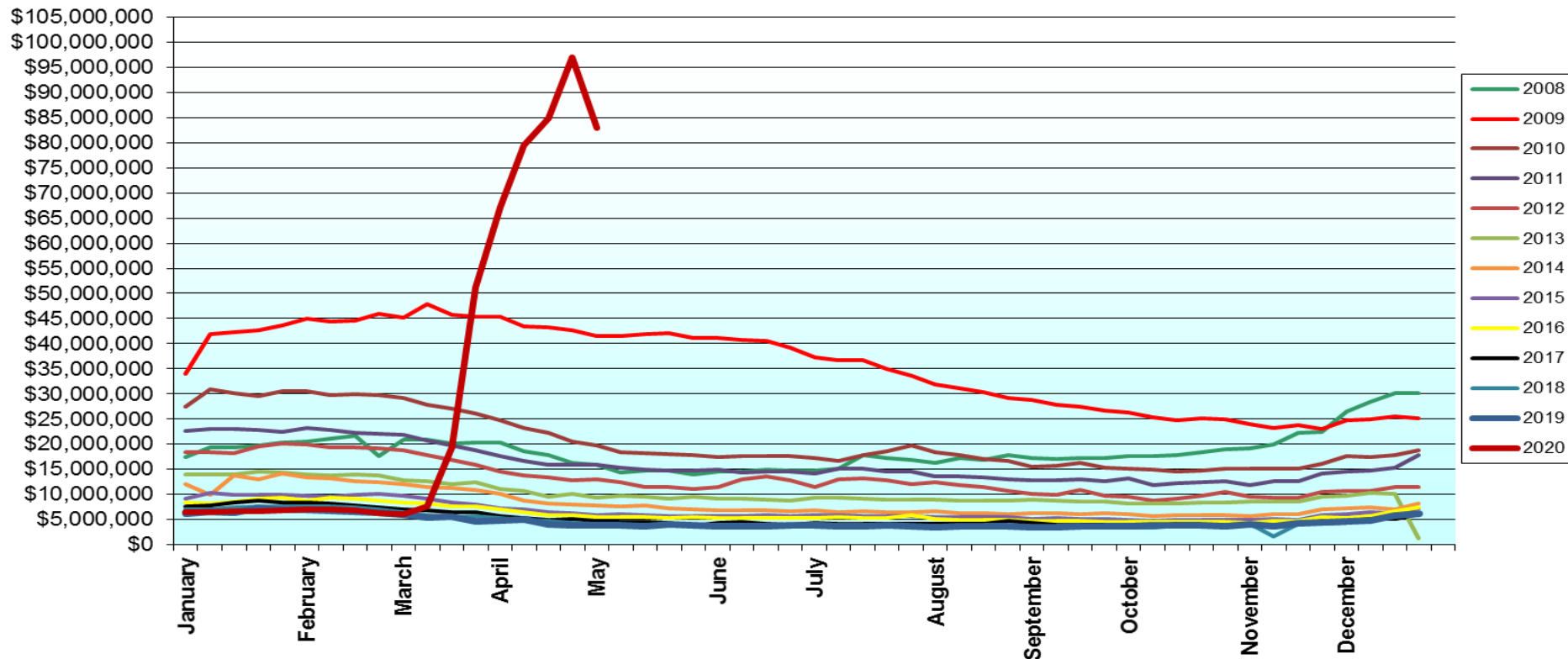
*Indiana is at 61.4% compared to U.S. at 60.2%*



# State Benefits Paid 2008-2020

*A snapshot of benefits paid through May 9<sup>th</sup>*

## State Benefits Paid 2008-2020





## Midwest Comparison Rates: Seasonally Adjusted Over the Year and Over the Month

	Apr-19	Mar-20	Apr-20	Monthly change	Yearly change
Indiana	3.4%	3.0%	16.9%	13.9%	13.5%
U.S.	3.6%	4.4%	14.7%	10.3%	11.1%
Illinois	4.2%	4.2%	16.4%	12.2%	12.2%
Kentucky	4.3%	5.2%	15.4%	10.2%	11.1%
Michigan	4.3%	4.3%	22.7%	18.4%	18.4%
Minnesota	3.2%	2.9%	8.1%	5.2%	4.9%
Ohio	4.1%	5.8%	16.8%	-5.5%	-4.1%
Wisconsin	3.3%	3.1%	14.1%	11.0%	10.8%

## Alternative Measures of Labor Underutilization 2<sup>nd</sup> Quarter 2019 through 1<sup>st</sup> Quarter 2020 Averages

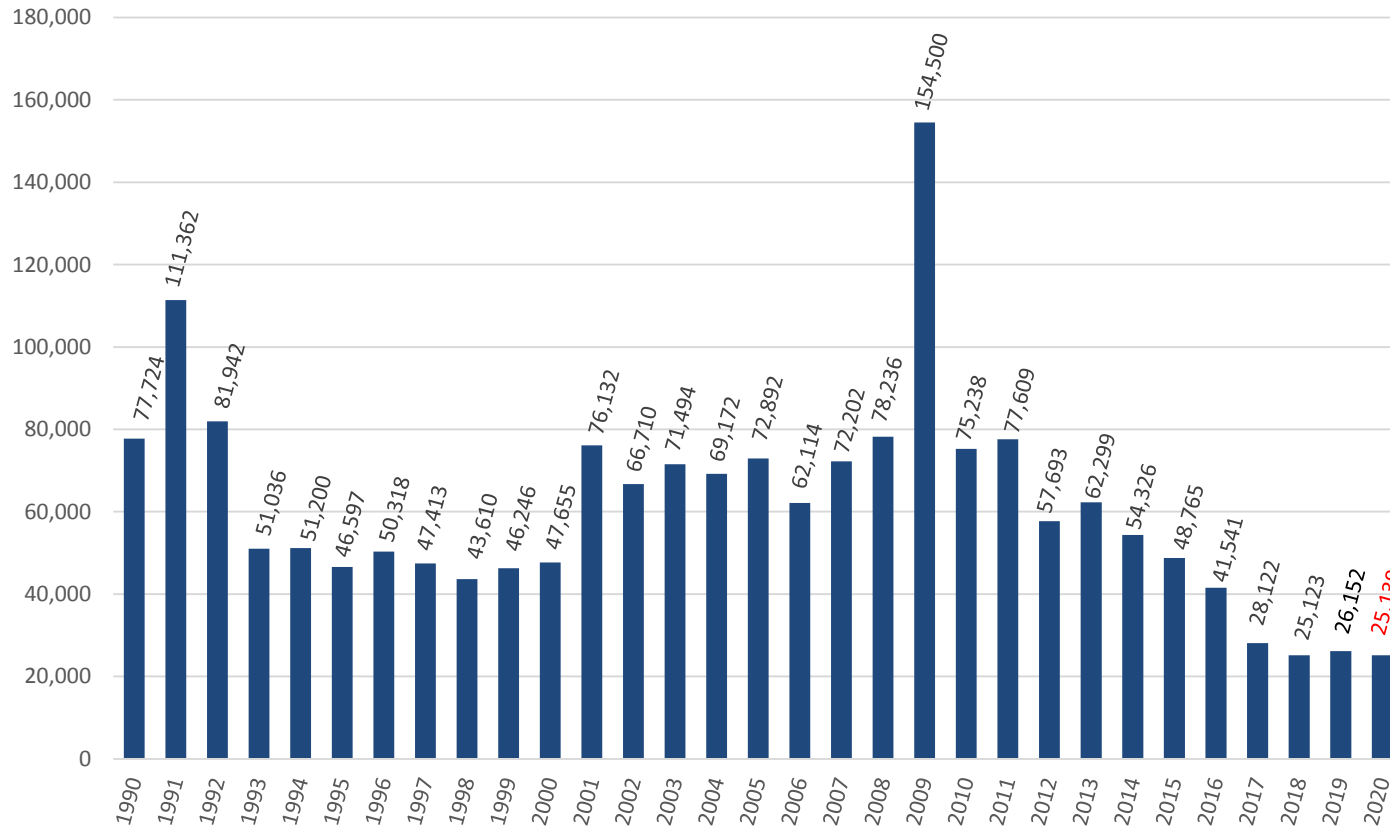
State	U-1	U-2	U-3	U-4	U-5	U-6
Illinois	1.3	2.0	3.7	3.9	4.5	7.1
Indiana	1.0	1.6	3.1	3.4	3.8	6
Kentucky	1.4	2.3	4.2	4.4	5.1	7.2
Michigan	1.2	1.8	3.8	4.1	4.7	7.2
Minnesota	0.8	1.9	3.0	3.1	3.6	5.6
Ohio	1.2	1.8	4.3	4.5	5.2	8.1
Wisconsin	1.1	1.8	3.5	3.6	4.1	6.2
United States	1.3	1.7	3.7	3.9	4.5	7.2

The six state measures are based on the same definitions as those published for the U.S.:

- U-1, persons unemployed 15 weeks or longer, as a percent of the civilian labor force;
- U-2, job losers and persons who completed temporary jobs, as a percent of the civilian labor force;
- U-3, total unemployed, as a percent of the civilian labor force (this is the definition used for the official unemployment rate);
- U-4, total unemployed plus discouraged workers, as a percent of the civilian labor force plus discouraged workers;
- U-5, total unemployed, plus discouraged workers, plus all other marginally attached workers, as a percent of the civilian labor force plus all marginally attached workers; and
- U-6, total unemployed, plus all marginally attached workers, plus total employed part time for economic reasons, as a percent of the civilian labor force plus all marginally attached workers.

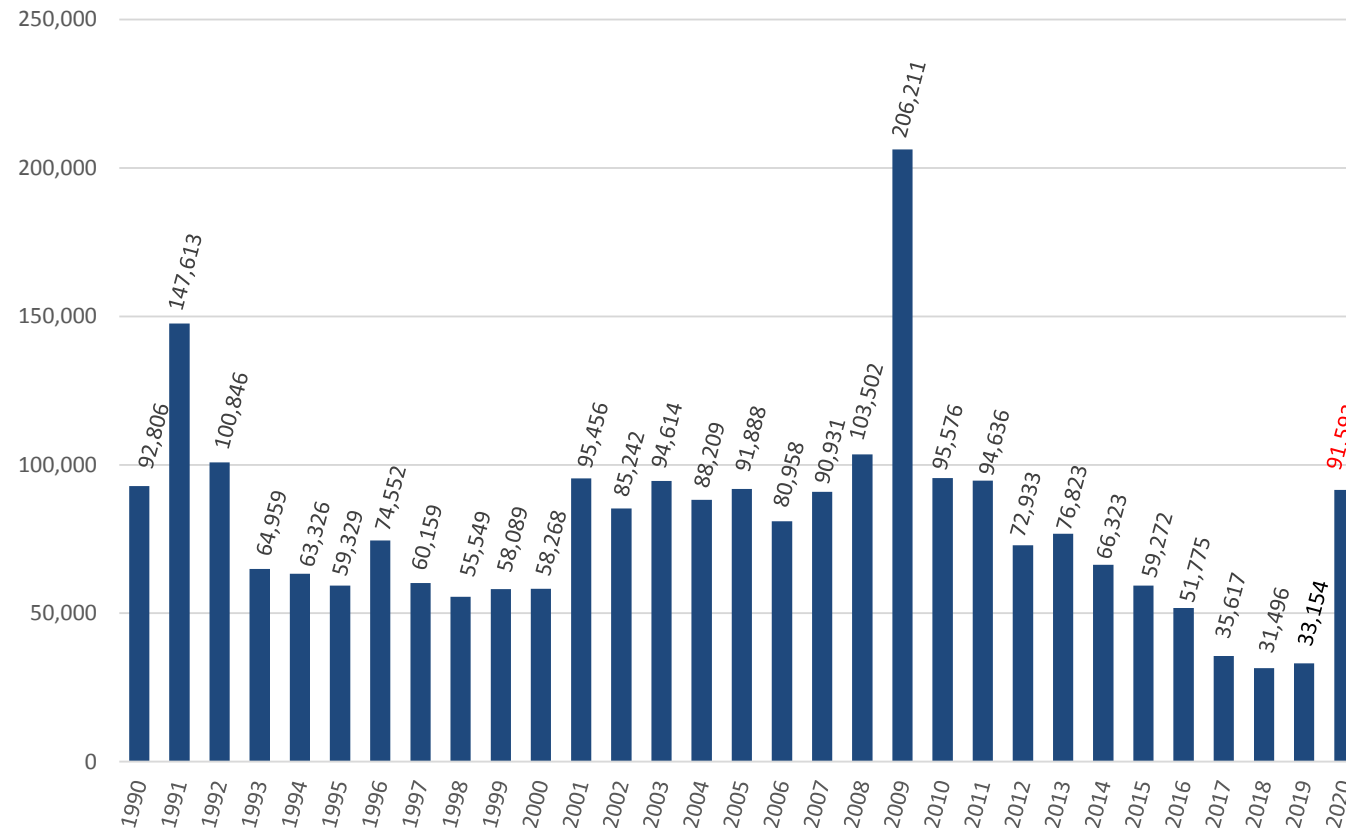
# Weekly Initial Claims – Week 8

Total aggregated UI claims for the first 8 weeks of each year as reported to ETA.



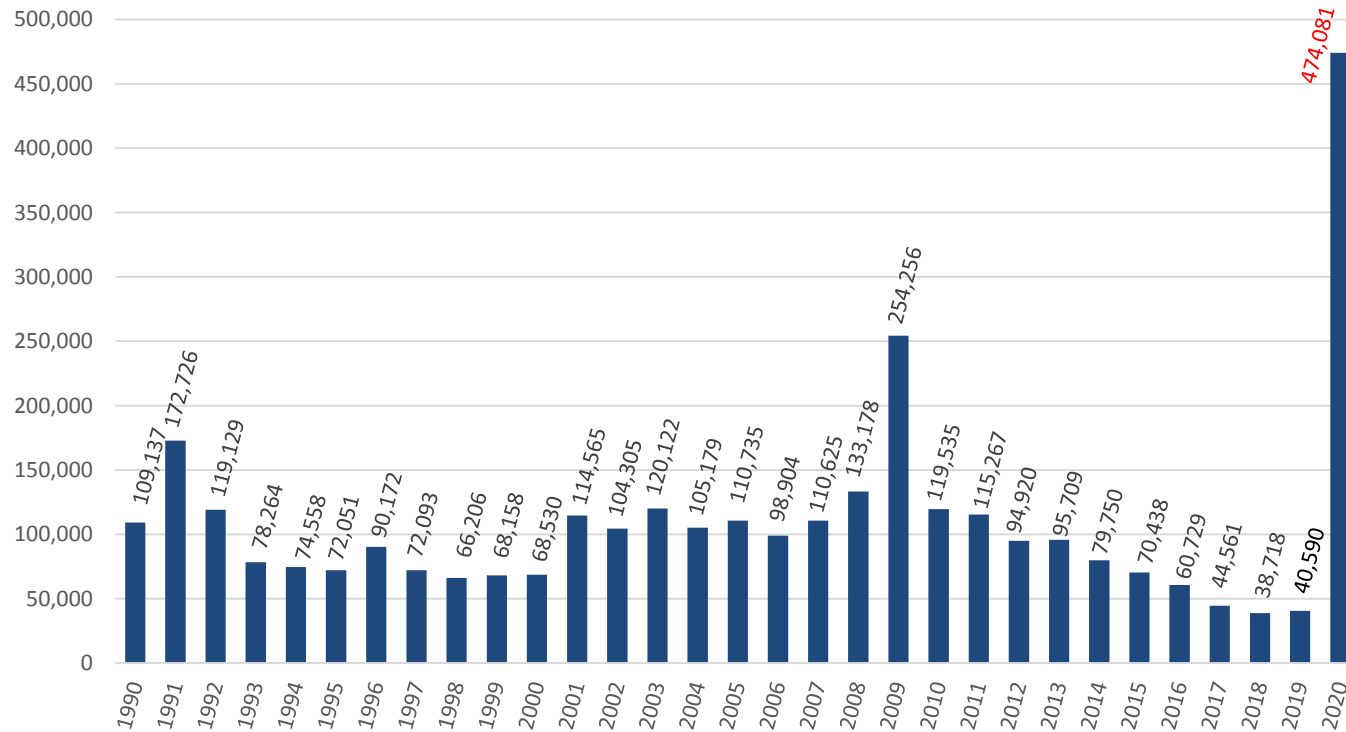
## Weekly Initial Claims – Week 11

Total aggregated UI claims for the first 11 weeks of each year as reported to ETA.



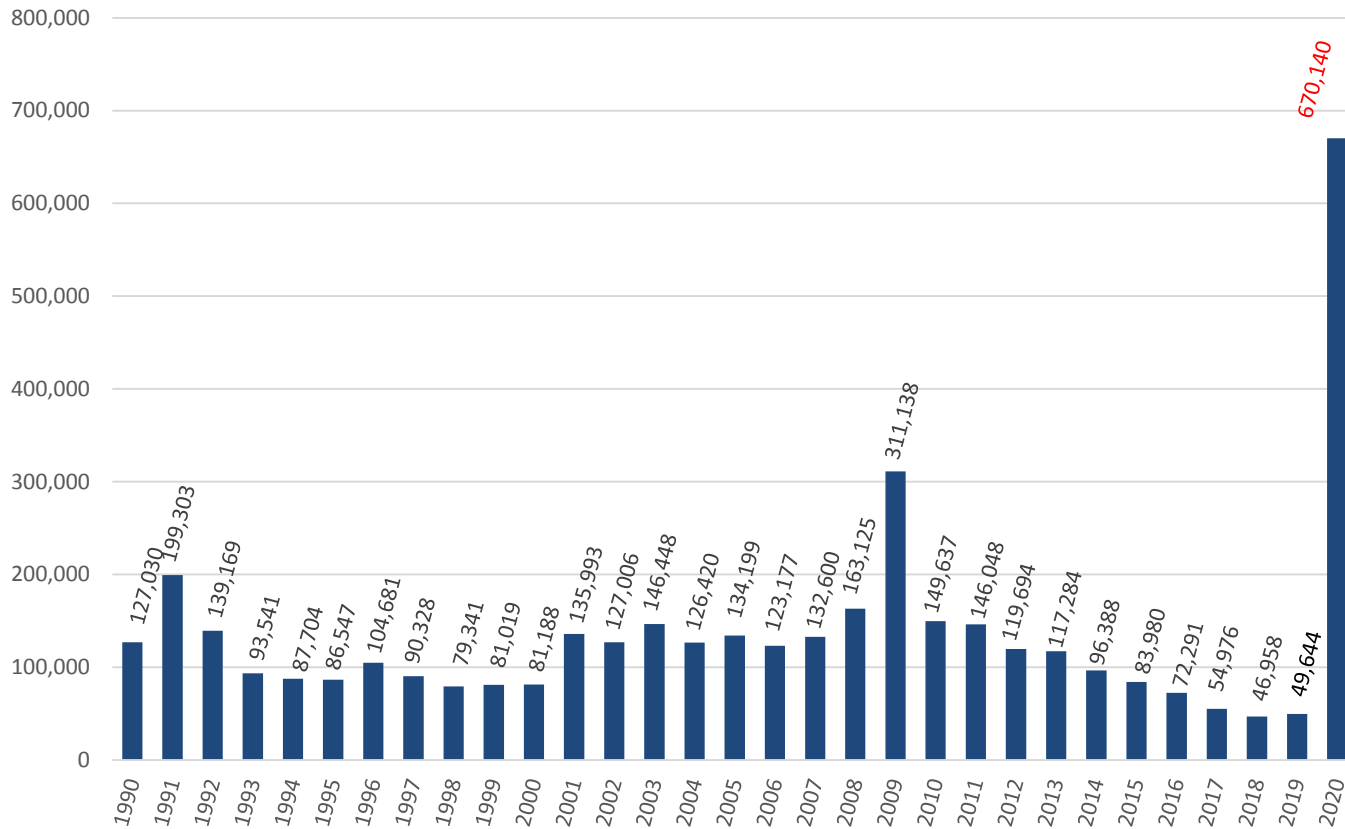
## Weekly Initial Claims – Week 14

Total aggregated UI claims for the first 14 weeks of each year as reported to ETA.



## Weekly Initial Claims – Week 18

Total aggregated UI claims for the first 18 weeks of each year as reported to ETA.



## Regular UI Claims

Reference Week (12th of the month) Input to LAUS Unemployment Rate Model

	2009	2013	2014	2015	2016	2017	2018	2019	2020	OTM Change	OTY Change
JANUARY	150,888	63,223	49,377	41,333	36,555	33,137	24,968	21,808	23,526	6,710	1,718
FEBRUARY	154,388	60,183	52,316	39,282	36,909	32,463	25,879	23,992	25,050	1,524	1,058
MARCH	157,257	54,578	45,928	35,755	32,439	32,141	21,171	22,446	22,555	(2,495)	109
APRIL	143,842	48,548	39,717	25,597	23,895	21,998	17,618	17,914	252,250	229,695	234,336
MAY	141,174	42,997	32,460	22,807	22,300	19,431	14,774	14,411			
JUNE	136,670	41,722	29,524	22,030	22,025	16,722	14,653	14,386			
JULY	121,336	44,597	30,845	22,341	22,326	15,775	15,098	15,054			
AUGUST	103,509	39,998	26,061	21,472	20,737	15,692	13,959	14,156			
SEPTEMBER	92,680	39,563	23,685	20,941	19,372	14,334	12,981	13,620			
OCTOBER	86,275	37,778	23,768	19,917	19,143	14,266	13,083	14,106			
NOVEMBER	82,451	38,517	25,315	21,199	19,547	14,347	15,499	14,274			
DECEMBER	91,814	42,484	30,982	26,249	24,599	17,345	16,693	16,816			

\*Without earnings – Reference week claims

## Industries with most continued claims by the April BLS reference week

<b>April 12-18</b>	<b>Continued Claims</b>
<b>Total</b>	<b>234,200</b>
<b>Manufacturing</b>	<b>79,115</b>
<b>Accommodation</b>	<b>33,669</b>
<b>Health &amp; Social Assistance</b>	<b>22,514</b>
<b>Retail Trade</b>	<b>19,320</b>
<b>Construction</b>	<b>12,415</b>



## Indiana: Not in the Labor Force by Gender and Age

May 2019 – April 2020  
Current Population Survey, Bureau of Labor Statistics (in 1000s)

	Total	Age			Sex	
		16 to 24 years	25 to 54 years	55 years and over	Men	Women
Indiana						
Total not in the labor force	1,894.4	324.8	423.3	1,146.4	754.9	1,139.5
Do not want a job now	1,790.0	288.1	386.4	1,115.5	703.1	1,086.9
Want a job	104.4	36.7	36.9	30.9	51.8	52.7
Did not search for work in previous year	70.6	26.0	21.5	23.1	32.6	38.0
Searched for work in previous year	33.9	10.7	15.4	7.8	19.2	14.7
Not available to work now	9.2	4.1	4.1	1.0	4.4	4.8
Available to work now	24.6	6.6	11.2	6.8	14.8	9.9
Reason not currently looking:						
Discouragement over job prospects	9.7	1.6	4.4	3.7	6.6	3.1
Reasons other than discouragement	14.9	5.0	6.8	3.1	8.2	6.7

- Data not available

Source: Table b. Civilians not in the labor force by sex and age,  
May 2019 – April 2020 (based on CPS) (Numbers in thousands)

## Summary of Covid-19 Economic Crisis

- Indiana had over 640,000 Initial Claims filed from March 14 through May 2<sup>nd</sup> 2020.
- For comparison the Great Recession took from Nov 1<sup>st</sup> 2008 through July 4<sup>th</sup> 2009 to get over 640,000 Initial Claims filed (36 Weeks).
- Total Private Employment was under 2,340,000 level last in October 2009 (2,337,300).
- Manufacturing last was under 449,700 jobs was July 2010 (449,400).
- The Labor Force was last below 3,238,000 in August 2014 (3,231,964).
- The last time Labor Force Employment was at the current level was November 1992 (2,691,292).
- The highest Unemployment Rate from 1976- present was December 1982 (12.6%).
- The most unemployed Labor Force was in February 2010 (348,823).

## Purchasing Managers' Index (PMI)

- The Purchasing Managers Index (PMI) is a measure of the prevailing direction of economic trends in manufacturing.
- The PMI is based on a monthly survey of supply chain managers across 19 industries, covering both upstream and downstream activity.
- The value and movements in the PMI and its components can provide useful insight to business decision makers, market analysts, and investors, and is a leading indicator of overall economic activity in the U.S.

PMI is a number from 0 to 100. A PMI above 50 represents an expansion when compared with the previous month. A PMI reading under 50 represents a contraction.

MANUFACTURING AT A GLANCE						
April 2020						
Index	Series Index Apr	Series Index Mar	Percentage Point Change	Direction	Rate of Change	Trend* (Months)
PMI®	41.5	49.1	-7.6	Contracting	Faster	2
New Orders	27.1	42.2	-15.1	Contracting	Faster	3
Production	27.5	47.7	-20.2	Contracting	Faster	2
Employment	27.5	43.8	-16.3	Contracting	Faster	9
Supplier Deliveries	76	65	11	Slowing	Faster	6
Inventories	49.7	46.9	2.8	Contracting	Slower	11
Customers' Inventories	48.8	43.4	5.4	Too Low	Slower	43
Prices	35.3	37.4	-2.1	Decreasing	Faster	3
Backlog of Orders	37.8	45.9	-8.1	Contracting	Faster	2
New Export Orders	35.3	46.6	-11.3	Contracting	Faster	2
Imports	42.7	42.1	0.6	Contracting	Slower	3
<b>OVERALL ECONOMY</b>				Contracting	From Growing	1
<b>Manufacturing Sector</b>				Contracting	Faster	2