



# Economic Growth Region 4

Statistical Data Report for August 2017, Released October 2017

## State Employment and Unemployment

Unemployment rates were higher in August in eight states, lower in one state, and stable in 41 states and the District of Columbia, the U.S. Bureau of Labor Statistics reported today. Twenty-one states had jobless rate decreases from a year earlier, one state had an increase, and 28 states and the District had little or no change. The national unemployment rate, 4.4 percent, was little changed from July but was 0.5 percentage point lower than in August 2016.

Nonfarm payroll employment increased in six states in August 2017, decreased in three states, and was essentially unchanged in 41 states and the District of Columbia. Over the year, 29 states and the District added nonfarm payroll jobs and 21 states were essentially unchanged.



## Economic Growth Region (EGR) 4

Benton, Carroll, Cass, Clinton, Fountain, Howard, Miami, Montgomery, Tippecanoe, Tipton, Warren and White Counties.

| August 2017 Labor Force Estimates (not seasonally adjusted) |             |             |            |        |        |        |
|-------------------------------------------------------------|-------------|-------------|------------|--------|--------|--------|
| Area                                                        | Labor Force | Employed    | Unemployed | Aug-17 | Jul-17 | Aug-16 |
| U.S.                                                        | 160,863,000 | 153,576,000 | 7,287,000  | 4.5%   | 4.6%   | 5.0%   |
| IN                                                          | 3,355,775   | 3,220,309   | 135,466    | 4.0%   | 3.4%   | 4.4%   |
| EGR 4                                                       | 253,540     | 243,633     | 9,907      | 3.9%   | 3.3%   | 4.2%   |
| Kokomo MSA                                                  | 39,413      | 37,792      | 1,621      | 4.1%   | 3.5%   | 4.5%   |
| Lafayette MSA                                               | 109,587     | 105,332     | 4,255      | 3.9%   | 3.3%   | 4.2%   |
| Benton Co.                                                  | 4,598       | 4,422       | 176        | 3.8%   | 3.2%   | 4.1%   |
| Carroll Co.                                                 | 10,097      | 9,715       | 382        | 3.8%   | 3.4%   | 4.2%   |
| Cass Co.                                                    | 17,661      | 16,916      | 745        | 4.2%   | 3.6%   | 4.5%   |
| Clinton Co.                                                 | 17,200      | 16,569      | 631        | 3.7%   | 3.3%   | 3.8%   |
| Fountain Co.                                                | 7,796       | 7,447       | 349        | 4.5%   | 3.9%   | 5.5%   |
| Howard Co.                                                  | 39,413      | 37,792      | 1,621      | 4.1%   | 3.5%   | 4.5%   |
| Miami Co.                                                   | 16,183      | 15,509      | 674        | 4.2%   | 3.7%   | 4.5%   |
| Montgomery Co.                                              | 18,933      | 18,236      | 697        | 3.7%   | 3.0%   | 4.0%   |
| Tippecanoe Co.                                              | 94,892      | 91,195      | 3,697      | 3.9%   | 3.3%   | 4.2%   |
| Tipton Co.                                                  | 8,726       | 8,416       | 310        | 3.6%   | 2.8%   | 3.6%   |
| Warren Co.                                                  | 4,201       | 4,050       | 151        | 3.6%   | 3.3%   | 4.7%   |
| White Co.                                                   | 13,840      | 13,366      | 474        | 3.4%   | 2.9%   | 3.8%   |
| Attica                                                      | 1,428       | 1,362       | 66         | 4.6%   | 3.8%   | 6.0%   |
| Crawfordsville                                              | 7,358       | 7,041       | 317        | 4.3%   | 3.4%   | 4.5%   |
| Delphi                                                      | 1,316       | 1,254       | 62         | 4.7%   | 3.8%   | 4.8%   |
| Fowler                                                      | 1,134       | 1,091       | 43         | 3.8%   | 3.1%   | 4.1%   |
| Frankfort                                                   | 8,163       | 7,847       | 316        | 3.9%   | 3.5%   | 3.9%   |
| Kokomo                                                      | 27,065      | 25,903      | 1,162      | 4.3%   | 3.7%   | 4.7%   |
| Lafayette                                                   | 38,048      | 36,672      | 1,376      | 3.6%   | 3.2%   | 4.1%   |
| Logansport                                                  | 7,841       | 7,477       | 364        | 4.6%   | 3.9%   | 5.0%   |
| Monticello                                                  | 2,754       | 2,664       | 90         | 3.3%   | 3.1%   | 4.4%   |
| Peru                                                        | 4,819       | 4,611       | 208        | 4.3%   | 4.2%   | 5.1%   |
| Tipton                                                      | 2,660       | 2,545       | 115        | 4.3%   | 3.2%   | 4.2%   |
| West Lafayette                                              | 21,273      | 20,486      | 787        | 3.7%   | 3.0%   | 3.7%   |
| Williamsport                                                | 848         | 816         | 32         | 3.8%   | 3.9%   | 4.3%   |

## Unemployment Rates by State (seasonally adjusted): August 2017

U.S. - 4.4%

Illinois - 5%

**Indiana - 3.5%**

Kentucky - 5.4%

Michigan - 3.9%

Ohio - 5.4%

Source: U.S. Department of Labor, Bureau of Labor Statistics

## Unemployment Rank by County (of 92 counties): August 2017

#18 - Fountain (4.5%)

#32 - Cass (4.2%)

#36 - Miami (4.2%)

#40 - Howard (4.1%)

#49 - Tippecanoe (3.9%)

#51 - Benton (3.8%)

#52 - Carroll (3.8%)

#60 - Clinton (3.7%)

#62 - Montgomery (3.7%)

#67 - Tipton (3.6%)

#69 - Warren (3.6%)

#82 - White (3.4%)

Source: Indiana Department of Workforce Development, Research and Development, Local Area Unemployment Statistics

Source: Indiana Department of Workforce Development, Research & Analysis, Local Area Unemployment Statistics | Unemployment Statistics Released:09/17 | Notes: The data displayed are presented as estimates only. The most recent month's data are always preliminary and are revised when the next month's data are released.

| Consumer Price Index (CPI-U Change), Unadjusted Percent Change to August 2017 from |             |             |                 |             |
|------------------------------------------------------------------------------------|-------------|-------------|-----------------|-------------|
| CPI Item                                                                           | Aug-16      | Jul-17      | Aug-16          | Jul-17      |
|                                                                                    | U.S. City   |             | Midwest Region* |             |
| <b>All Items</b>                                                                   | <b>1.9%</b> | <b>0.3%</b> | <b>1.5%</b>     | <b>0.3%</b> |
| Food & Beverages                                                                   | 1.1%        | 0.1%        | 0.7%            | 0.4%        |
| Housing                                                                            | 2.9%        | 0.3%        | 2.3%            | 0.1%        |
| Apparel                                                                            | -0.6%       | 1.4%        | 1.3%            | 1.6%        |
| Transportation                                                                     | 2.8%        | 0.6%        | 1.1%            | 0.5%        |
| Medical Care                                                                       | 1.8%        | 0.2%        | 2.0%            | 0.1%        |
| Recreation                                                                         | 1.5%        | 0.0%        | 3.6%            | 0.3%        |
| Education & Communication                                                          | -2.6%       | 0.2%        | -2.9%           | 0.2%        |
| Other Goods & Services                                                             | 2.2%        | -0.2%       | 1.8%            | 0.2%        |

\*Midwest region = Midwest Urban Average. Midwest Region includes Illinois, Indiana, Iowa, Kansas, Michigan, Minnesota, Missouri, Nebraska, North Dakota, Ohio, South Dakota and Wisconsin | Source: U.S. Bureau of Labor Statistics

## Unemployment Claims: August 2017

### Region 4

#### Initial Claims

08/05/17 - 136(D)  
08/12/17 - 159(D)  
08/19/17 - 157(D)  
08/26/17 - 272(D)

#### Continued Claims

08/05/17 - 899  
08/12/17 - 913  
08/19/17 - 892  
08/26/17 - 879

#### Total Claims

08/05/17 - 1,035  
08/12/17 - 1,072  
08/19/17 - 1,049  
08/26/17 - 1,151

### State of Indiana

#### Initial Claims

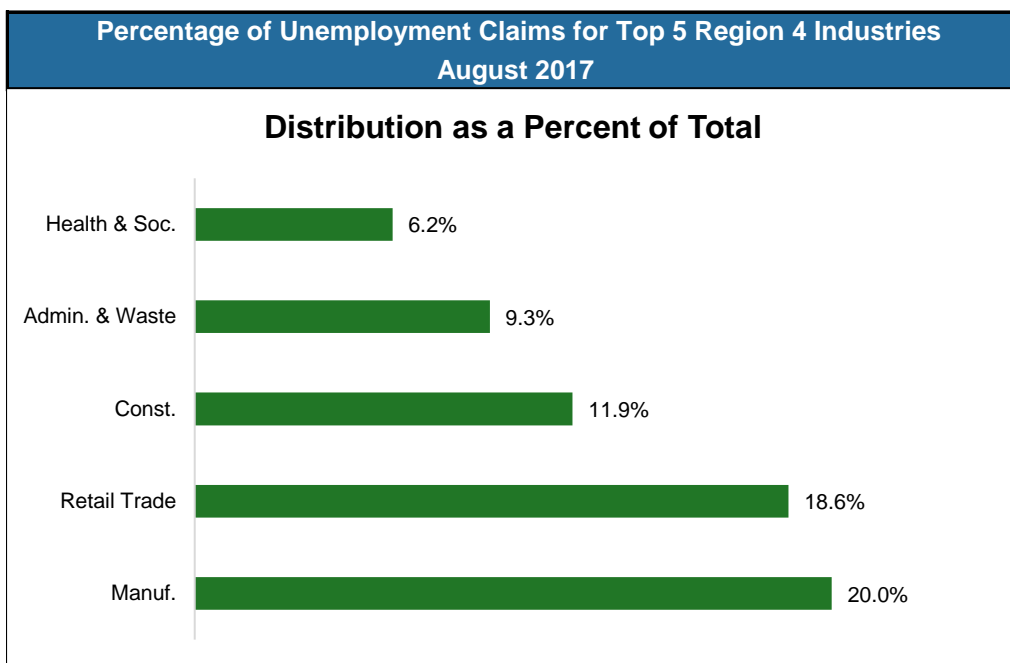
08/05/17 - 2,532  
08/12/17 - 2,608  
08/19/17 - 2,541  
08/26/17 - 4,273

#### Continued Claims

08/05/17 - 13,397  
08/12/17 - 13,423  
08/19/17 - 13,412  
08/26/17 - 13,729

#### Total Claims

08/05/17 - 15,929  
08/12/17 - 16,031  
08/19/17 - 15,953  
08/26/17 - 18,002



Source: Indiana Department of Workforce Development, Research and Analysis

## WARN Notices

| WARN Notices for Region 4 for August 2017 |      |        |                       |             |
|-------------------------------------------|------|--------|-----------------------|-------------|
| Company                                   | City | County | # of workers affected | Notice Date |
|                                           |      |        |                       |             |
|                                           |      |        |                       |             |
|                                           |      |        |                       |             |

**There are no WARN Notices for August 2017 for Region 4.**

Source: Indiana Department of Workforce Development, WARN Notices | For information on WARN Act requirements, you may go to the U.S. Department of Labor Employment Training Administration Fact Sheet:

<https://www.dolela.gov/programs/factsht/warn.htm>

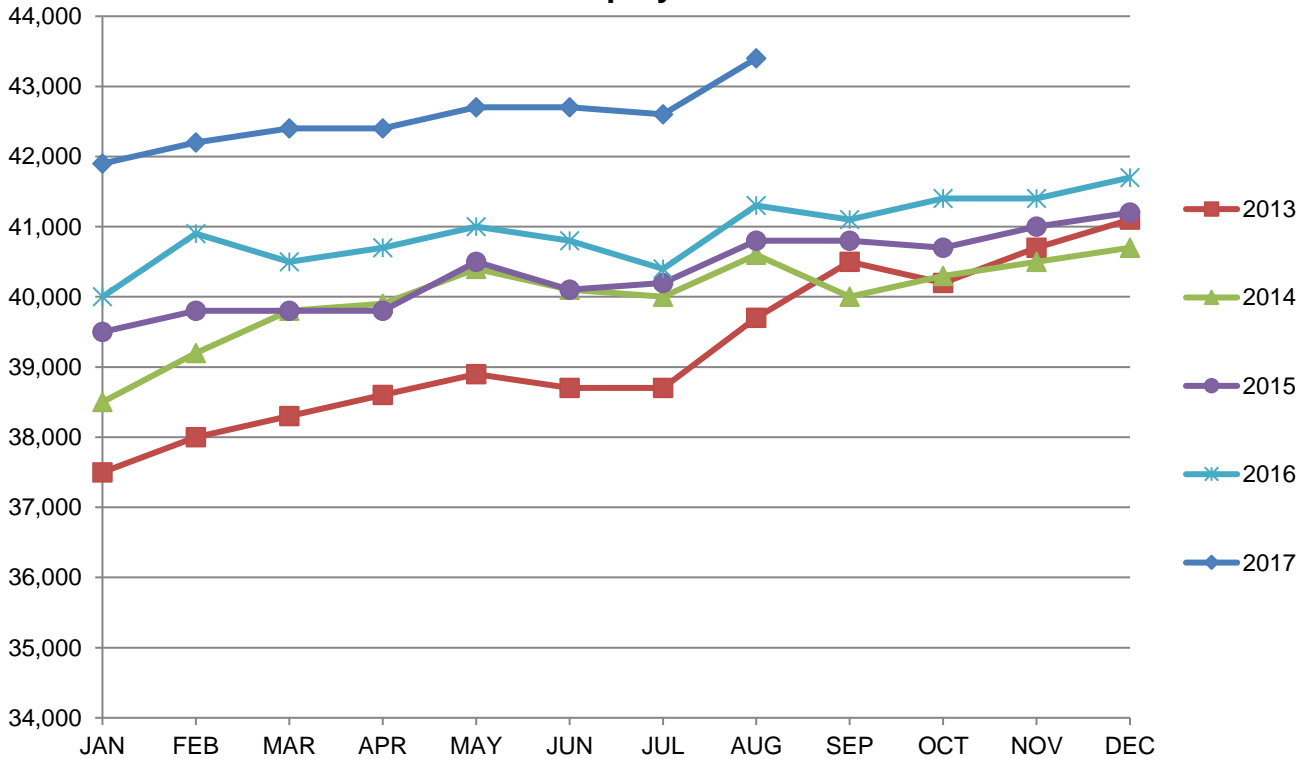
(D) indicates item is affected by non-disclosure issues relating to industry or ownership status |

Source: Indiana Department of Workforce Development, Research and Development

| Kokomo MSA                                 |                    |               |               |                  |                  |                 |                 |
|--------------------------------------------|--------------------|---------------|---------------|------------------|------------------|-----------------|-----------------|
| <i>Wage and Salaried Employment</i>        | <i>August 2017</i> |               |               | <i># Change</i>  | <i>% Change</i>  | <i># Change</i> | <i>% Change</i> |
| Industry                                   | Aug-17             | Jul-17        | Aug-16        | Jul-17 to Aug-17 | Aug-16 to Aug-17 |                 |                 |
| <b>Total Nonfarm</b>                       | <b>43,400</b>      | <b>42,700</b> | <b>41,900</b> | <b>700</b>       | <b>1.6%</b>      | <b>1,500</b>    | <b>3.6%</b>     |
| <b>Total Private</b>                       | <b>38,600</b>      | <b>38,500</b> | <b>37,100</b> | <b>100</b>       | <b>0.3%</b>      | <b>1,500</b>    | <b>4.0%</b>     |
| Goods Producing                            | 14,100             | 14,000        | 13,300        | 100              | 0.7%             | 800             | 6.0%            |
| Service Providing                          | 29,300             | 28,700        | 28,600        | 600              | 2.1%             | 700             | 2.5%            |
| Private Service Providing                  | 24,500             | 24,500        | 23,800        | 0                | 0.0%             | 700             | 2.9%            |
| Mining, Logging and Construction           | 1,200              | 1,200         | 1,100         | 0                | 0.0%             | 100             | 9.1%            |
| Manufacturing                              | 12,900             | 12,800        | 12,200        | 100              | 0.8%             | 700             | 5.7%            |
| Trade, Transportation and Utilities        | 6,600              | 6,600         | 6,700         | 0                | 0.0%             | -100            | -1.5%           |
| Wholesale Trade                            | 900                | 900           | 900           | 0                | 0.0%             | 0               | 0.0%            |
| Retail Trade                               | 4,900              | 4,900         | 5,000         | 0                | 0.0%             | -100            | -2.0%           |
| Transportation, Warehousing, and Utilities | 800                | 800           | 800           | 0                | 0.0%             | 0               | 0.0%            |
| Information                                | 200                | 200           | 200           | 0                | 0.0%             | 0               | 0.0%            |
| Financial Activities                       | 1,200              | 1,200         | 1,200         | 0                | 0.0%             | 0               | 0.0%            |
| Leisure and Hospitality                    | 4,600              | 4,700         | 4,700         | -100             | -2.1%            | -100            | -2.1%           |
| Other Services                             | 1,900              | 1,900         | 1,800         | 0                | 0.0%             | 100             | 5.6%            |
| <b>Total Government</b>                    | <b>4,800</b>       | <b>4,200</b>  | <b>4,800</b>  | <b>600</b>       | <b>14.3%</b>     | <b>0</b>        | <b>0.0%</b>     |
| Local Government                           | 3,800              | 3,200         | 3,600         | 600              | 18.8%            | 200             | 5.6%            |
| Local Government Educational Services      | 2,300              | 1,700         | 2,200         | 600              | 35.3%            | 100             | 4.6%            |

Source: Indiana Dept of Workforce Development, Research and Analysis, Current Employment Statistics

### Kokomo MSA Employment Trends

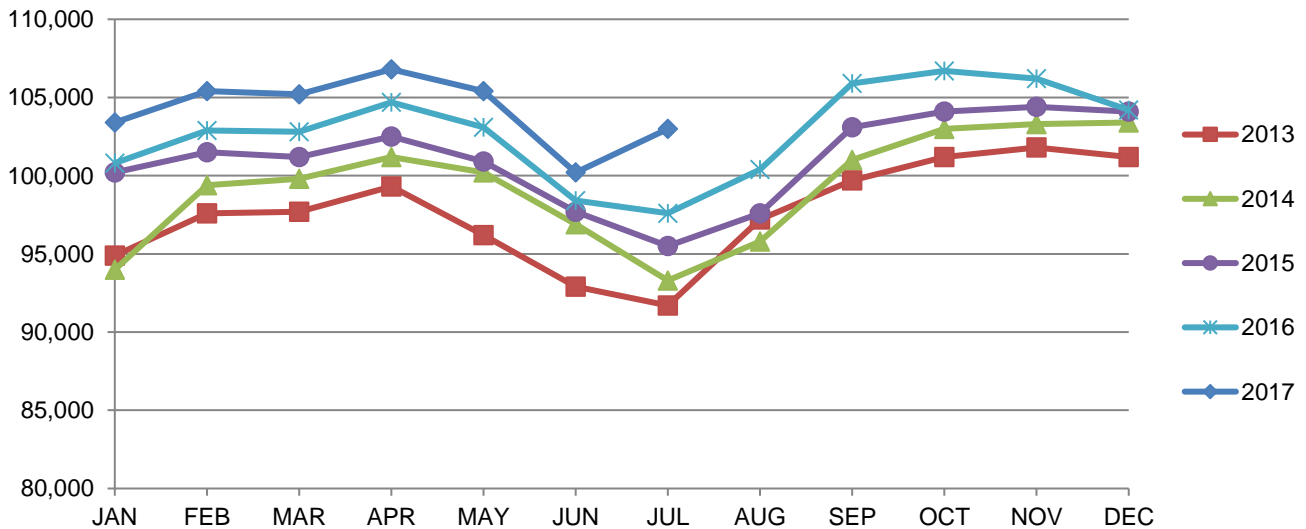


Source: Indiana Department of Workforce Development, Research & Analysis, Current Employment Statistics | Note: Historical data for the most recent 5 years (both seasonally adjusted and not seasonally adjusted) are revised near the beginning of each calendar year, prior to the release of January estimates for statewide data.

| Lafayette-West Lafayette MSA              |                    |                |                |                         |                 |                         |                 |
|-------------------------------------------|--------------------|----------------|----------------|-------------------------|-----------------|-------------------------|-----------------|
| <i>Wage and Salaried Employment</i>       | <i>August 2017</i> |                |                | <i># Change</i>         | <i>% Change</i> | <i># Change</i>         | <i>% Change</i> |
| <b>Industry</b>                           | <b>Aug-17</b>      | <b>Jul-17</b>  | <b>Aug-16</b>  | <b>Jul-17 to Aug-17</b> |                 | <b>Aug-16 to Aug-17</b> |                 |
| <b>Total Nonfarm</b>                      | <b>103,000</b>     | <b>100,400</b> | <b>100,600</b> | <b>2,600</b>            | <b>2.6%</b>     | <b>2,400</b>            | <b>2.4%</b>     |
| <b>Total Private</b>                      | <b>75,400</b>      | <b>75,100</b>  | <b>73,600</b>  | <b>300</b>              | <b>0.4%</b>     | <b>1,800</b>            | <b>2.5%</b>     |
| Goods Producing                           | 21,900             | 22,100         | 21,300         | -200                    | -0.9%           | 600                     | 2.8%            |
| Service Providing                         | 81,100             | 78,300         | 79,300         | 2,800                   | 3.6%            | 1,800                   | 2.3%            |
| Private Service Providing                 | 53,500             | 53,000         | 52,300         | 500                     | 0.9%            | 1,200                   | 2.3%            |
| Mining, Logging and Construction          | 3,800              | 4,000          | 3,500          | -200                    | -5.0%           | 300                     | 8.6%            |
| Manufacturing                             | 18,100             | 18,100         | 17,800         | 0                       | 0.0%            | 300                     | 1.7%            |
| Durable Goods                             | 14,300             | 14,200         | 14,000         | 100                     | 0.7%            | 300                     | 2.1%            |
| Non-Durable Goods                         | 3,800              | 3,900          | 3,800          | -100                    | -2.6%           | 0                       | 0.0%            |
| Trade, Transportation and Utilities       | 15,200             | 15,000         | 14,900         | 200                     | 1.3%            | 300                     | 2.0%            |
| Wholesale Trade                           | 2,400              | 2,400          | 2,400          | 0                       | 0.0%            | 0                       | 0.0%            |
| Retail Trade                              | 10,300             | 10,100         | 10,100         | 200                     | 2.0%            | 200                     | 2.0%            |
| Transportation, Warehousing and Utilities | 2,500              | 2,500          | 2,400          | 0                       | 0.0%            | 100                     | 4.2%            |
| Information                               | 800                | 800            | 800            | 0                       | 0.0%            | 0                       | 0.0%            |
| Financial Activities                      | 3,800              | 3,800          | 3,700          | 0                       | 0.0%            | 100                     | 2.7%            |
| Professional and Business Services        | 8,200              | 8,000          | 7,700          | 200                     | 2.5%            | 500                     | 6.5%            |
| Education and Health Services             | 12,200             | 12,200         | 12,100         | 0                       | 0.0%            | 100                     | 0.8%            |
| Leisure and Hospitality                   | 9,800              | 9,600          | 9,700          | 200                     | 2.1%            | 100                     | 1.0%            |
| Accommodation and Food Services           | 9,300              | 9,300          | 9,100          | 0                       | 0.0%            | 200                     | 2.2%            |
| Other Services                            | 3,500              | 3,600          | 3,400          | -100                    | -2.8%           | 100                     | 2.9%            |
| <b>Total Government</b>                   | <b>27,600</b>      | <b>25,300</b>  | <b>27,000</b>  | <b>2,300</b>            | <b>9.1%</b>     | <b>600</b>              | <b>2.2%</b>     |
| Federal Government                        | 500                | 500            | 500            | 0                       | 0.0%            | 0                       | 0.0%            |
| State Government                          | 19,600             | 18,600         | 19,600         | 1,000                   | 5.4%            | 0                       | 0.0%            |
| Local Government                          | 7,500              | 6,200          | 6,900          | 1,300                   | 21.0%           | 600                     | 8.7%            |
| Local Government Educational Services     | 4,500              | 3,200          | 4,100          | 1,300                   | 40.6%           | 400                     | 9.8%            |

Source: Indiana Dept of Workforce Development, Research and Analysis, Current Employment Statistics

### Lafayette-West Lafayette MSA Employment Trends



Source: Indiana Department of Workforce Development, Research & Analysis, Current Employment Statistics | Note: Historical data for the most recent 5 years (both seasonally adjusted and not seasonally adjusted) are revised near the beginning of each calendar year, prior to the release of January estimates for statewide data.

| <b>Frequently Listed Jobs</b>                                                      |                                                                                              |
|------------------------------------------------------------------------------------|----------------------------------------------------------------------------------------------|
| <b>Top 20 job listings by number of openings in Region 4 in the past 12 months</b> |                                                                                              |
| <b>Rank</b>                                                                        | <b>Occupations</b>                                                                           |
| 1                                                                                  | Production Workers, All Other                                                                |
| 2                                                                                  | Sales Representatives, Wholesale and Manufacturing, Except Technical and Scientific Products |
| 3                                                                                  | Engineers, All Other                                                                         |
| 4                                                                                  | Nursing Assistants                                                                           |
| 5                                                                                  | Registered Nurses                                                                            |
| 6                                                                                  | Packaging and Filling Machine Operators and Tenders                                          |
| 7                                                                                  | Personal Care Aides                                                                          |
| 8                                                                                  | Customer Service Representatives                                                             |
| 9                                                                                  | Helpers--Production Workers                                                                  |
| 10                                                                                 | Computer User Support Specialists                                                            |
| 11                                                                                 | Industrial Truck and Tractor Operators                                                       |
| 12                                                                                 | Maids and Housekeeping Cleaners                                                              |
| 13                                                                                 | Building Cleaning Workers, All Other                                                         |
| 14                                                                                 | Painters, Transportation Equipment                                                           |
| 15                                                                                 | Taxi Drivers and Chauffeurs                                                                  |
| 16                                                                                 | Assemblers and Fabricators, All Other                                                        |
| 17                                                                                 | Driver/Sales Workers                                                                         |
| 18                                                                                 | Retail Salespersons                                                                          |
| 19                                                                                 | Solar Sales Representatives and Assessors                                                    |
| 20                                                                                 | Healthcare Support Workers, All Other                                                        |

Source: Indiana Workforce Development, Indiana Career Connect

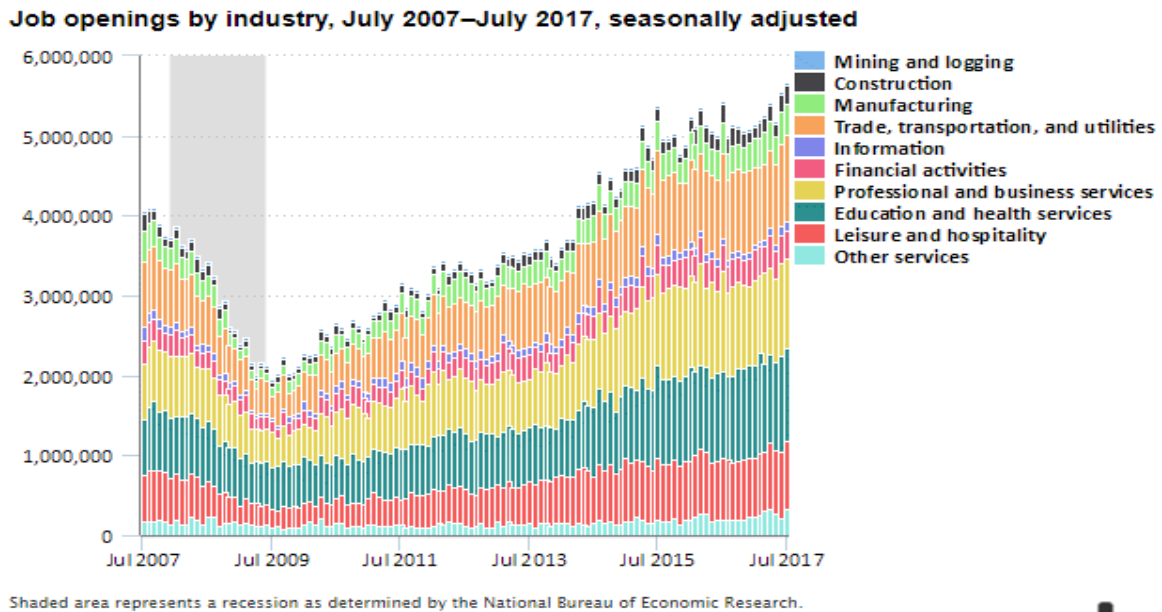
| <b>Applicant Pool</b>                                                                  |                        |
|----------------------------------------------------------------------------------------|------------------------|
| <b>Top 20 occupations desired by applicants on their resumes in the past 12 months</b> |                        |
| <b>Occupations</b>                                                                     | <b># of applicants</b> |
| Production Workers, All Other                                                          | 709                    |
| Assemblers and Fabricators, All Other                                                  | 687                    |
| Customer Service Representatives                                                       | 318                    |
| Helpers--Production Workers                                                            | 293                    |
| Laborers and Freight, Stock, and Material Movers, Hand                                 | 263                    |
| Office Clerks, General                                                                 | 181                    |
| Cashiers                                                                               | 165                    |
| Administrative Services Managers                                                       | 158                    |
| First-Line Supervisors of Production and Operating Workers                             | 158                    |
| Manufacturing Production Technicians                                                   | 149                    |
| Maintenance and Repair Workers, General                                                | 128                    |
| Team Assemblers                                                                        | 127                    |
| Retail Salespersons                                                                    | 121                    |
| Welders, Cutters, and Welder Fitters                                                   | 115                    |
| Nursing Assistants                                                                     | 113                    |
| Managers, All Other                                                                    | 104                    |
| Machinists                                                                             | 103                    |
| Stock Clerks- Stockroom, Warehouse, or Storage Yard                                    | 100                    |
| General and Operations Managers                                                        | 99                     |
| Receptionists and Information Clerks                                                   | 99                     |

Source: Indiana Workforce Development, Indiana Career Connect

## Private job openings increase by 241,000 from July 2016 to July 2017

SEPTEMBER 14, 2017

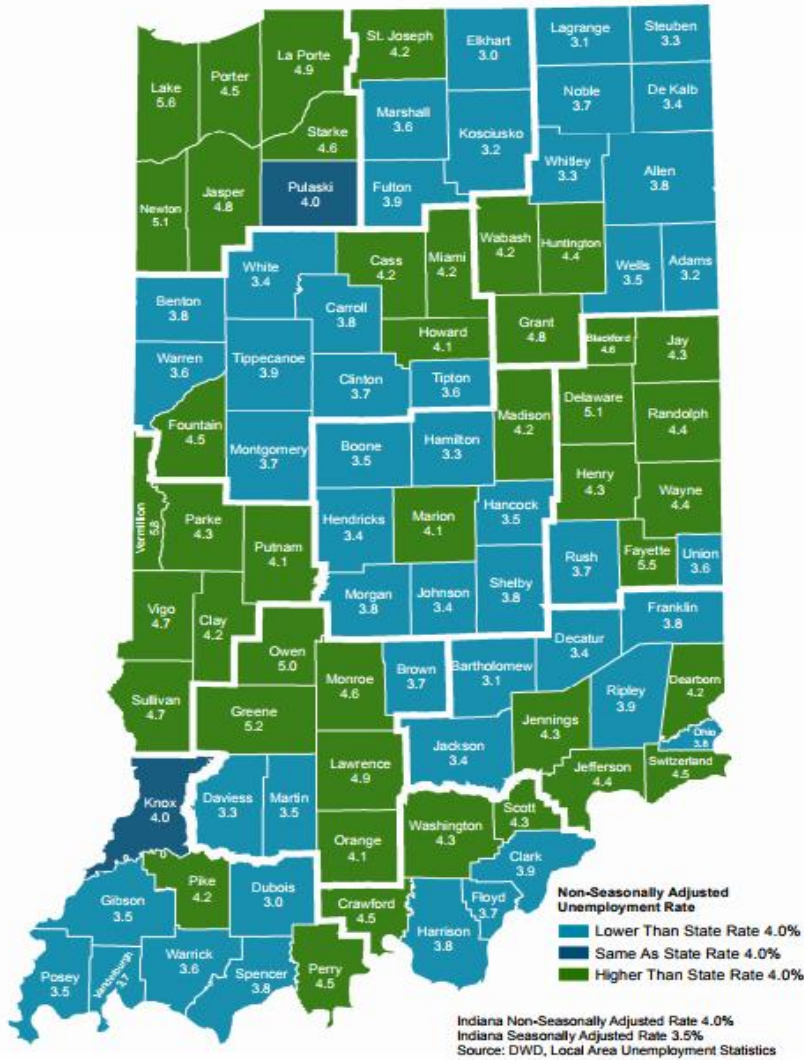
On the last business day of July 2017, there were 5.7 million private industry job openings, an increase of 241,000 from July 2016. The largest over-the-year increase among major industries was in other services (126,000). Professional and business services decreased by 149,000.



From July 2016 to July 2017, other industries with increases included leisure and hospitality (98,000), information (29,000), and mining and logging (17,000). These data are from the [Job Openings and Labor Turnover Survey](#) and are seasonally adjusted. Data for the most recent month are preliminary.

Bureau of Labor Statistics, U.S. Department of Labor, *The Economics Daily*, Private job openings increase by 241,000 from July 2016 to July 2017 on the Internet at <https://www.bls.gov/opub/ted/2017/private-job-openings-increase-by-241000-from-july-2016-to-july-2017.htm>

# County Unemployment Rates August 2017 - Non Seasonally Adjusted



INDIANA  
DEPARTMENT OF  
**WORKFORCE**  
DEVELOPMENT

## Questions?

Please contact the DWD  
Research and Analysis  
Regional Labor Analyst  
listed below:

Cassie Janes

Regional Labor Analyst  
Research and Analysis

[Indiana Department of  
Workforce Development](http://Indiana Department of Workforce Development)

709 S. Reed Rd

Kokomo, IN 46901

765-459-0571 x3036

[cjanes@dwd.in.gov](mailto:cjanes@dwd.in.gov)