

Indiana's Employment and Labor Force Estimates September 2020

10/20/2020

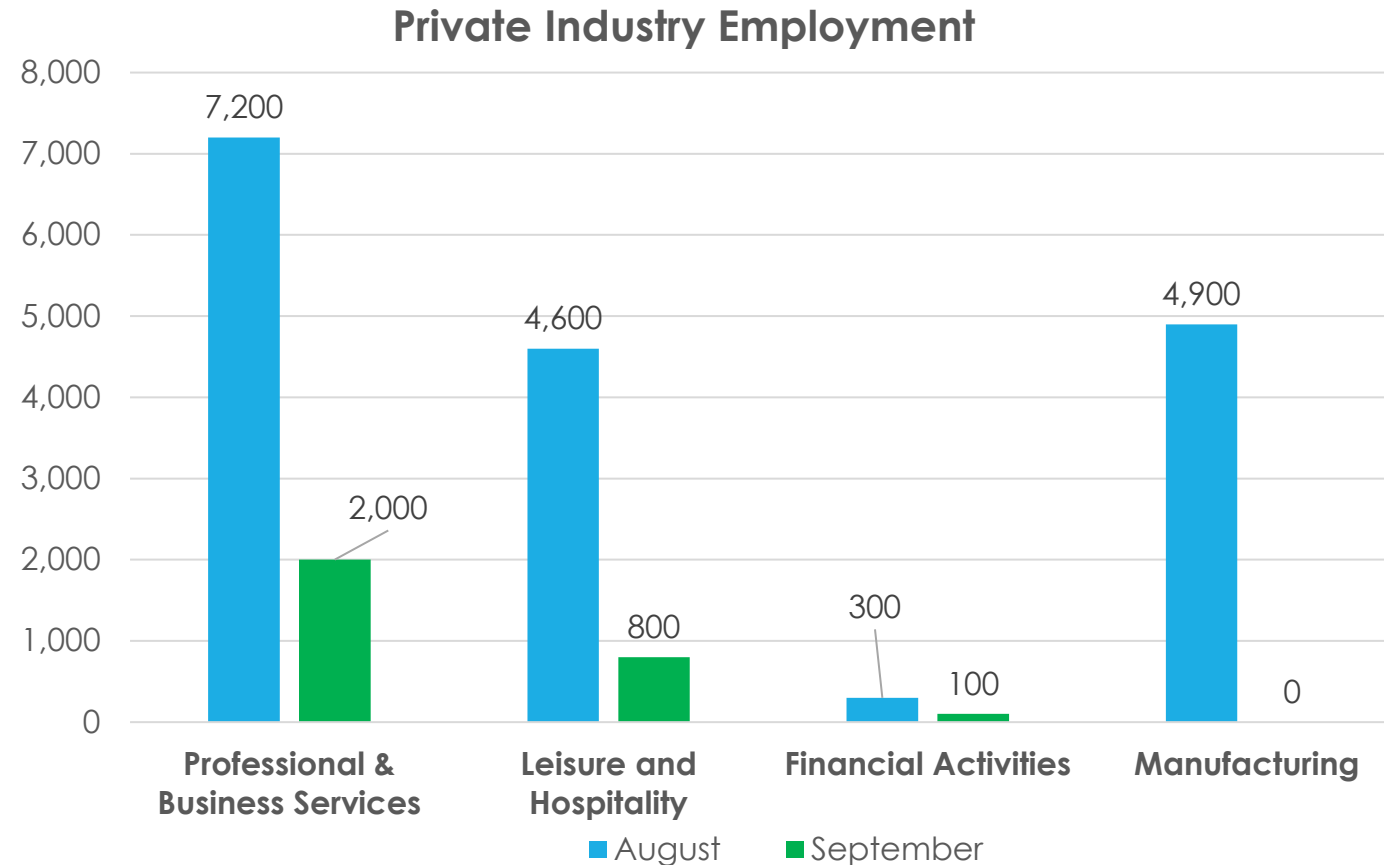
Key Points

- **Indiana's unemployment rate stands at 6.2% in September 2020. The U.S. is at 7.9%.**
- **Indiana's Labor Force is at 3,336,535.**
- Indiana's Labor Force decreased 19,691 due to a decrease in employment of 13,402 and a decrease in unemployment of 6,289.
- Indiana's Labor Force has decreased 49,575 over the year.
- Indiana's Labor Force Participation Rate is at 63.0%. This is above the U.S. Labor Force Participation Rate of 61.4%.

Key Points: September 2020

Indiana's Private Employment

- Decreased by 4,500 jobs over the month and had loses of 109,700 over the year.
- September private employment = 2,623,100.



Comparing Local Area Unemployment Statistics (LAUS) and Current Employment Statistics (CES)

LAUS (Labor Force by Residence)

This counts people, not jobs, and is...

- An estimate of employment based on where the employee lives, rather than where they work
- Used in calculating the labor force

CES (Employment by Job)

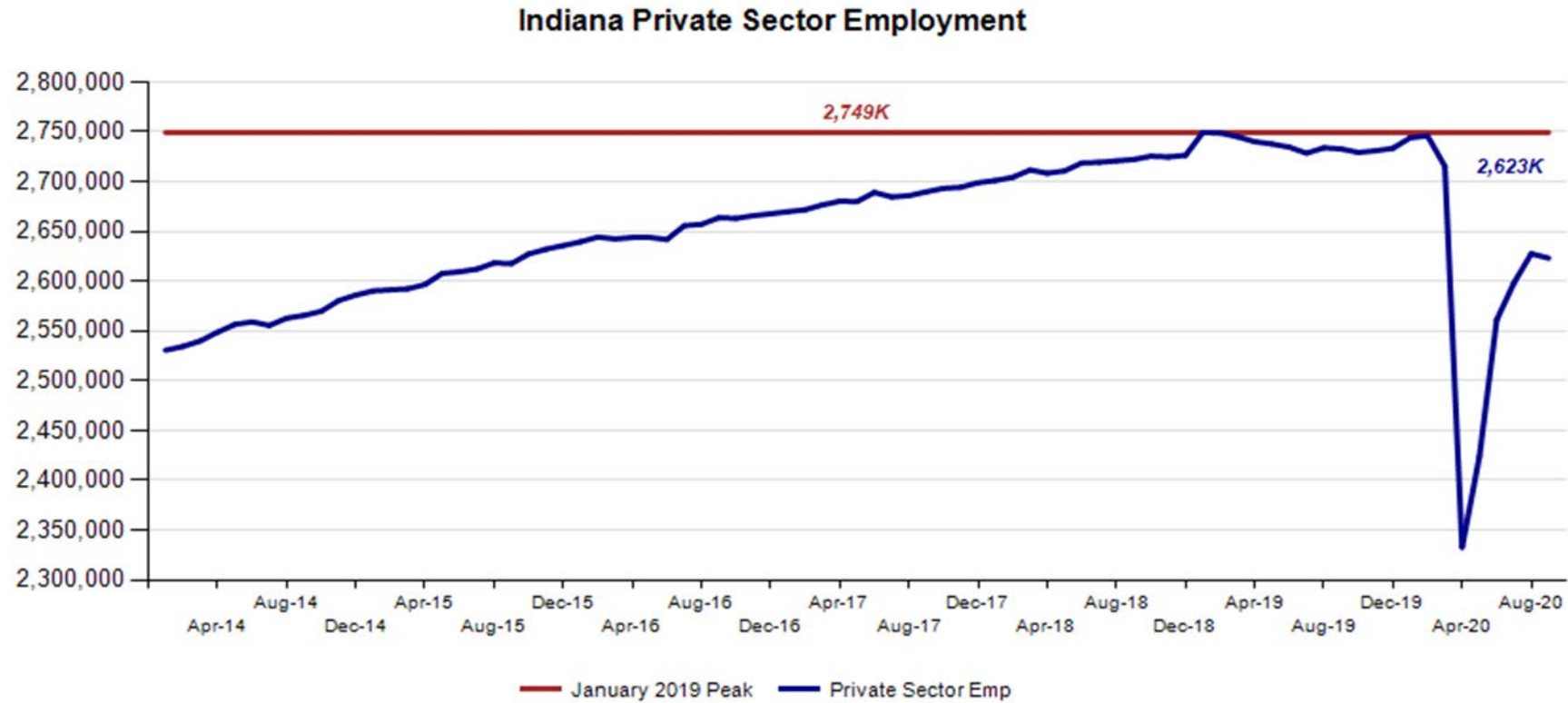
This counts jobs, not people, and is...

- An estimate of employment based on the location of the job regardless of the worker's residence
- Also called nonag wage and salary or nonfarm employment
- Used in Quarterly Census of Employment and Wages (QCEW), Occupational Employment Statistics (OES) and CES data

CES Monthly Jobs Report

Indiana Private Sector Employment

September 2020 total private employment is 126,200 below the January 2019 peak.



Indiana Private Sector Employment Change

September 2020 decreased by 4,5000 jobs over the month and is down 110,400 jobs over the year.

IN Employment Change Over the Month, Year-to-Date and Over the Year (seasonally adjusted)

Industry	September 2019	December 2019	August 2020	September 2020	Month Change	Y-to-D Change	Y-to-Y Change
Private Educational & Health Services	482.4	484.1	465.3	461.3	-4.0	-22.8	-21.1
.....Private Educational Services	65.3	63.2	63.1	57.3	-5.8	-5.9	-8.0
.....Health Care & Social Assistance	417.1	420.9	402.2	404.0	1.8	-16.9	-13.1
Manufacturing	540.9	539.5	503.0	503.0	0.0	-36.5	-37.9
Professional & Business Services	342.9	343.1	339.5	341.5	2.0	-1.6	-1.4
Financial Activities	141.2	141.1	139.0	139.1	0.1	-2.0	-2.1
Construction	145.5	148.0	147.8	146.5	-1.3	-1.5	1.0
Leisure and Hospitality	313.6	309.6	293.5	294.3	0.8	-15.3	-19.3
Trade, Transportation & Utilities	597.4	598.9	583.3	582.5	-0.8	-16.4	-14.9
.....Trade	436.6	437.8	423.7	421.4	-2.3	-16.4	-15.2
.....Transportation, Warehousing & Utilities	160.8	161.1	159.6	161.1	1.5	0.0	0.3
All Other	168.9	169.2	156.2	154.9	-1.3	-14.3	-14.0
Total Private	2,732.8	2,733.5	2,627.6	2,623.1	-4.5	-110.4	-109.7
Government (Includes Public Schools & Hospitals)	430.8	429.5	417.6	410.4	-7.2	-19.1	-20.4
Total Nonfarm	3,163.6	3,163.0	3,045.2	3,033.5	-11.7	-129.5	-130.1
United States Total Private	128,718.0	129,319.0	119,040.0	119,917.0	877.0	-9,402.0	-8,801.0

- Professional & Business Services **recovered 2,000** jobs over the month.
- Leisure and Hospitality **recovered 800** jobs over the month

Source: Current Employment Statistics (seasonally adjusted)

For month to month change, [visit this link.](#)

Indiana Private Sector Employment Change From Peak and Trough

September 2020 estimates show Indiana private jobs decreased 126,200 since January 2019.

IN Statewide Estimates (seasonally adjusted) -- September 2020

Supersector	Private Empl. Peak Jan 2019	Private Empl. Trough July 2009	August 2020	September 2020	Month to Month Change	Change Since Peak	Change Since Trough	% Month to Month Change
Private Educational & Health Services	479.7	411.1	465.3	461.3	-4.0	-18.4	50.2	-0.9%
.....Private Educational Services	65.5	63.3	63.1	57.3	-5.8	-8.2	-6.0	-9.2%
.....Health Care & Social Assistance	414.2	347.8	402.2	404.0	1.8	-10.2	56.2	0.4%
Manufacturing	545.1	427.3	503.0	503.0	0.0	-42.1	75.7	0.0%
Professional & Business Services	344.9	256.8	339.5	341.5	2.0	-3.4	84.7	0.6%
Financial Activities	140.7	130.7	139.0	139.1	0.1	-1.6	8.4	0.1%
Construction	147.6	117.4	147.8	146.5	-1.3	-1.1	29.1	-0.9%
Leisure and Hospitality	317.4	276.8	293.5	294.3	0.8	-23.1	17.5	0.3%
Trade, Transportation & Utilities	603.9	545.6	583.3	582.5	-0.8	-21.4	36.9	-0.1%
.....Trade	443.9	421.5	423.7	421.4	-2.3	-22.5	-0.1	-0.5%
.....Transportation, Warehousing & Utilities	160.0	124.1	159.6	161.1	1.5	1.1	37.0	0.9%
All Other	170.0	161.7	156.2	154.9	-1.3	-15.1	-6.8	-0.8%
Total Private	2,749.3	2,327.4	2,627.6	2,623.1	-4.5	-126.2	295.7	-0.2%
Government (Includes Public Schools & Hospitals)	429.9	434.5	417.6	410.4	-7.2	-19.5	-24.1	-1.7%
Total Nonfarm	3,179.2	2,761.9	3,045.2	3,033.5	-11.7	-145.7	271.6	-0.4%
United States Total Private	127,628.0	108,147.0	119,040.0	119,917.0	877.0	-7,711.0	11,770.0	0.7%

For historical data, [visit this link.](#)

Source: Current Employment Statistics (seasonally adjusted)

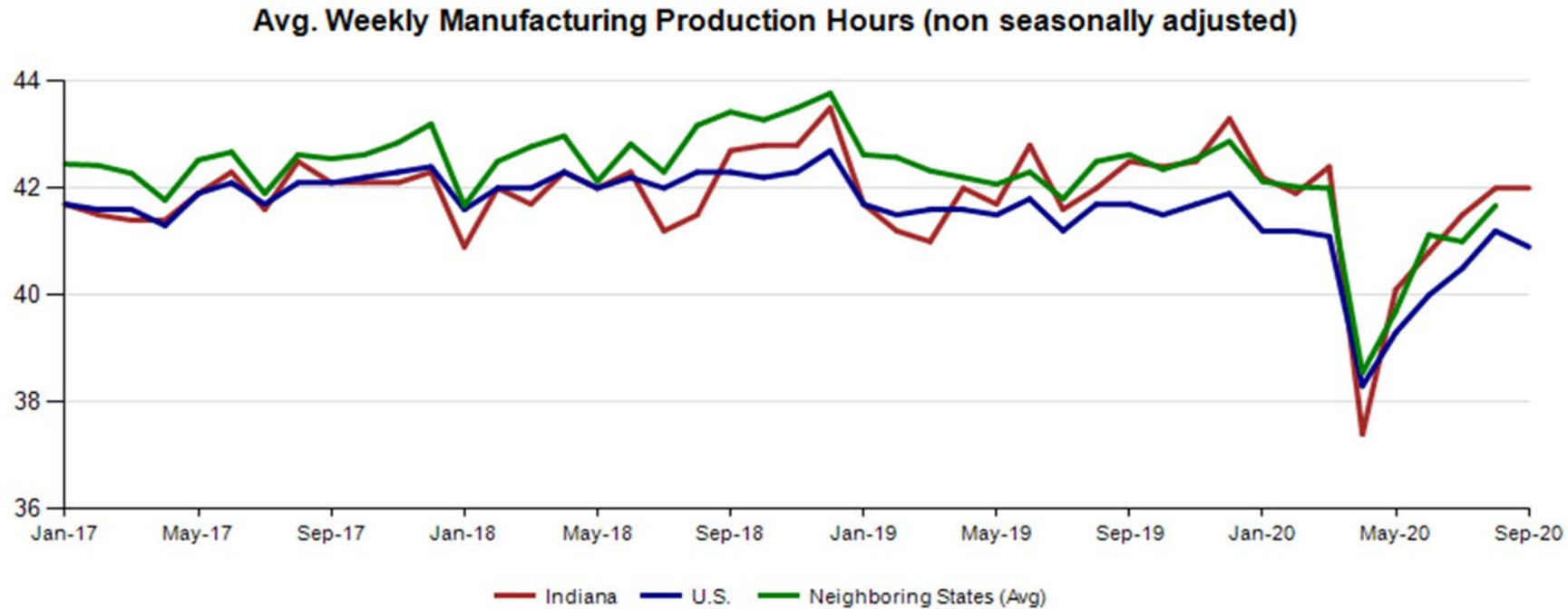
Indiana Private Sector Employment Changes 2020 Before and During Pandemic

Supersector	February 2020	March 2020	April 2020	May 2020	June 2020	July 2020	August 2020	September 2020	Feb-Apr job loss	April to Sept Chg	Chg Since Feb
Private Educational & Health Services	487.2	485.1	430.0	439.7	454.8	460.5	465.3	461.3	-57.2	31.3	-25.9
.....Private Educational Services	65.9	64.8	50.1	50.9	56.7	59.8	63.1	57.3	-15.8	7.2	-8.6
.....Health Care & Social Assistance	421.3	420.3	379.9	388.8	398.1	400.7	402.2	404.0	-41.4	24.1	-17.3
Manufacturing	535.1	527.9	450.3	469.7	496.0	496.2	503.0	503.0	-84.8	52.7	-32.1
Professional & Business Services	343.1	342.0	305.1	308.0	324.7	334.3	339.5	341.5	-38.0	36.4	-1.6
Financial Activities	143.0	141.6	138.8	138.3	138.5	139.0	139.0	139.1	-4.2	0.3	-3.9
Construction	152.3	149.1	134.8	142.7	146.2	146.5	147.8	146.5	-17.5	11.7	-5.8
Leisure and Hospitality	314.3	302.7	186.4	222.8	268.6	289.3	293.5	294.3	-127.9	107.9	-20.0
Trade, Transportation & Utilities	601.8	598.9	553.7	561.4	577.1	577.2	583.3	582.5	-48.1	28.8	-19.3
.....Trade	439.8	437.4	400.1	407.7	419.0	419.4	423.7	421.4	-39.7	21.3	-18.4
.....Transportation, Warehousing & Utilities	162.0	161.5	153.6	153.7	158.1	157.8	159.6	161.1	-8.4	7.5	-0.9
All Other	169.2	168.1	133.6	140.9	155.1	155.3	156.2	154.9	-35.6	21.3	-14.3
Total Private	2,746.0	2,715.4	2,332.7	2,423.5	2,561.0	2,598.3	2,627.6	2,623.1	-413.3	290.4	-122.9
Government (Includes Public Schools & Hospitals)	433.6	431.8	411.0	407.7	407.6	410.4	417.6	410.4	-22.6	-0.6	-23.2
Total Nonfarm	3,179.6	3,147.2	2,743.7	2,831.2	2,968.6	3,008.7	3,045.2	3,033.5	-435.9	289.8	-146.1
United States Total Private	129,740.0	128,855.0	108,638.0	111,759.0	116,500.0	117,973.0	119,040.0	119,917.0	-21,102.0	11,279.0	-9,823.0

Source: Current Employment Statistics (seasonally adjusted)

Avg. Weekly Manufacturing Production Hours

August 2020 average weekly hours for Indiana manufacturing production hours increased by 0.2 hours to 42.0 hours. National manufacturing hours decreased by 0.3 hours to 40.9 weekly hours, and Midwest states increased by 0.6 hours to 40.6 (August 2020 data).



Monthly Labor Force Report

Jobs Data for September 2020

Month NSA	Labor Force	Employed	Unemployed	IN Rate	Total NonFarm	Total Private	Regular UI Claims
Dec-16	3,288,631	3,161,080	127,551	3.9	3,118,700	2,681,300	24,599
Sep-20	3,328,250	3,134,198	194,052	5.8	3,053,000	2,631,600	122,585
Change	39,619	(26,882)	66,501	1.9	(65,700)	(49,700)	97,986

Month SA	Labor Force	Employed	Unemployed	IN Rate	Total NonFarm	Total Private	Regular UI Claims
Dec-16	3,320,863	3,187,493	133,370	4.0	3,094,300	2,667,700	24,599
Sep-20	3,336,535	3,128,254	208,281	6.2	3,033,500	2,623,100	122,585
Change	15,672	(59,239)	74,911	2.2	(60,800)	(44,600)	97,986

Table 1: Year-to-Date Benchmarked Model Estimates

Table 1a: Seasonally Adjusted #

(SSA Est. appear as the seasonally adjusted in BLS and State official publications and databases)

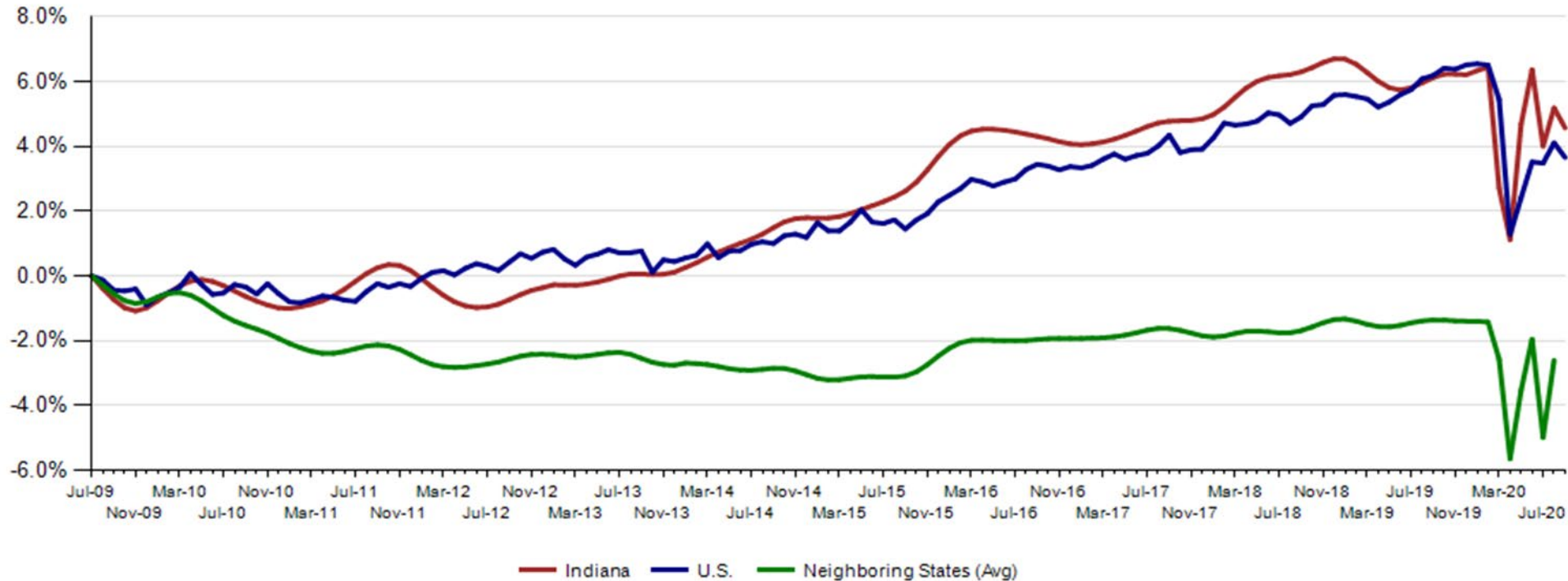
	Labor Force		Employment		Unemployment		
Month	Level	LFP	Level	EP	Level	Rate	Error Range ⁺
JAN	3,392,922	64.4	3,286,146	62.4	106,776	3.1	2.6- 3.7
FEB	3,396,229	64.4	3,291,040	62.5	105,189	3.1	2.6- 3.6
MAR	**3,277,678	**62.2	**3,177,786	**60.3	* 99,892	3.0	2.5- 3.6
APR	3,226,630	* 61.2	**2,660,808	**50.4	**565,822	**17.5	15.9-19.2
MAY	**3,340,305	**63.3	**2,930,891	**55.5	**409,414	**12.3	10.9-13.6
JUN	**3,393,875	**64.3	**3,017,294	**57.1	**376,581	**11.1	10.0-12.1
JUL	**3,318,673	**62.8	**3,057,572	**57.8	**261,101	**7.9	6.9- 8.8
AUG	**3,356,226	**63.5	**3,141,656	**59.4	**214,570	**6.4	5.6- 7.2
SEP	3,336,535	63.0	3,128,254	59.1	208,281	6.2	5.5- 7.0

Indiana Labor Force Pct. Change Since July '09 Indiana Trough

September 2020 Indiana Seasonally Adjusted Labor Force stands at 3,36,535.

- Employed labor force **decreased 13,402** over the month.
- Unemployment **decreased** by **6,289** over the month.

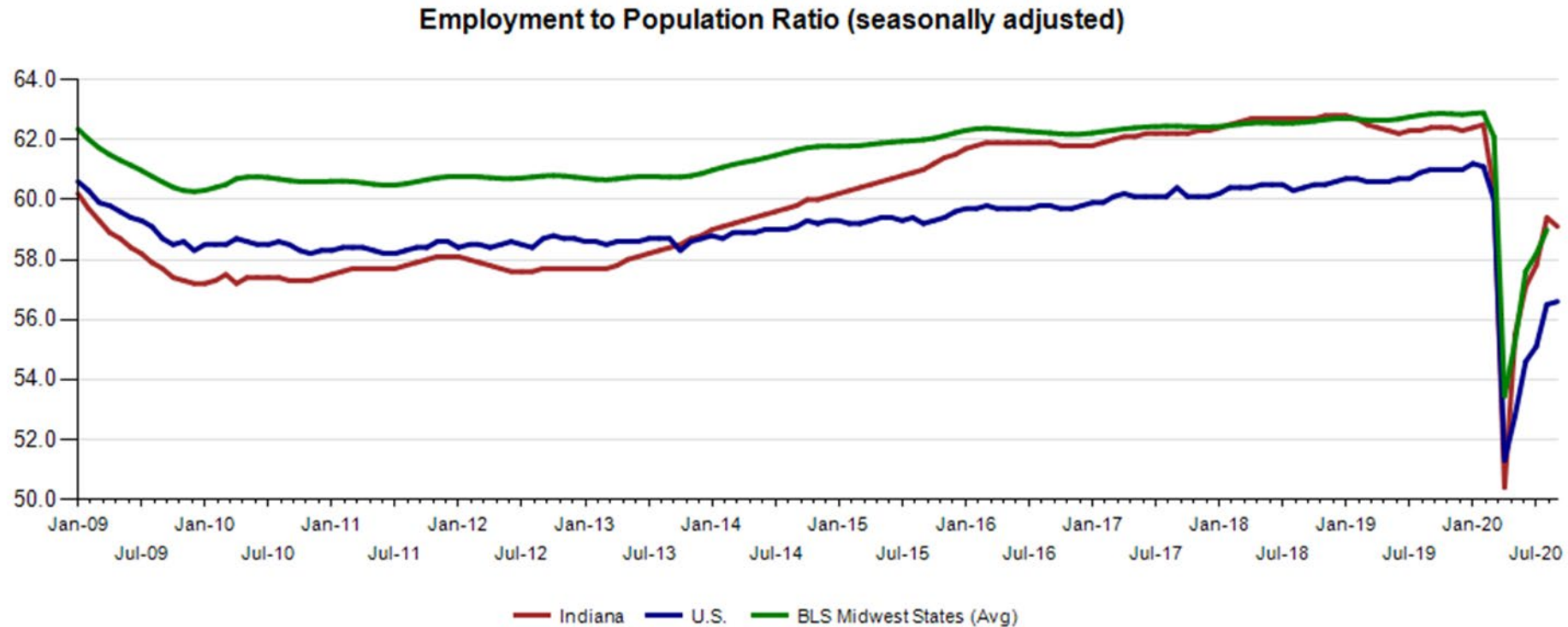
Labor Force Change Since July 2009 Indiana Trough (seasonally adjusted)



Source: Local Area Unemployment Statistics (seasonally adjusted)

Employment to Population Ratio (seasonally adjusted)

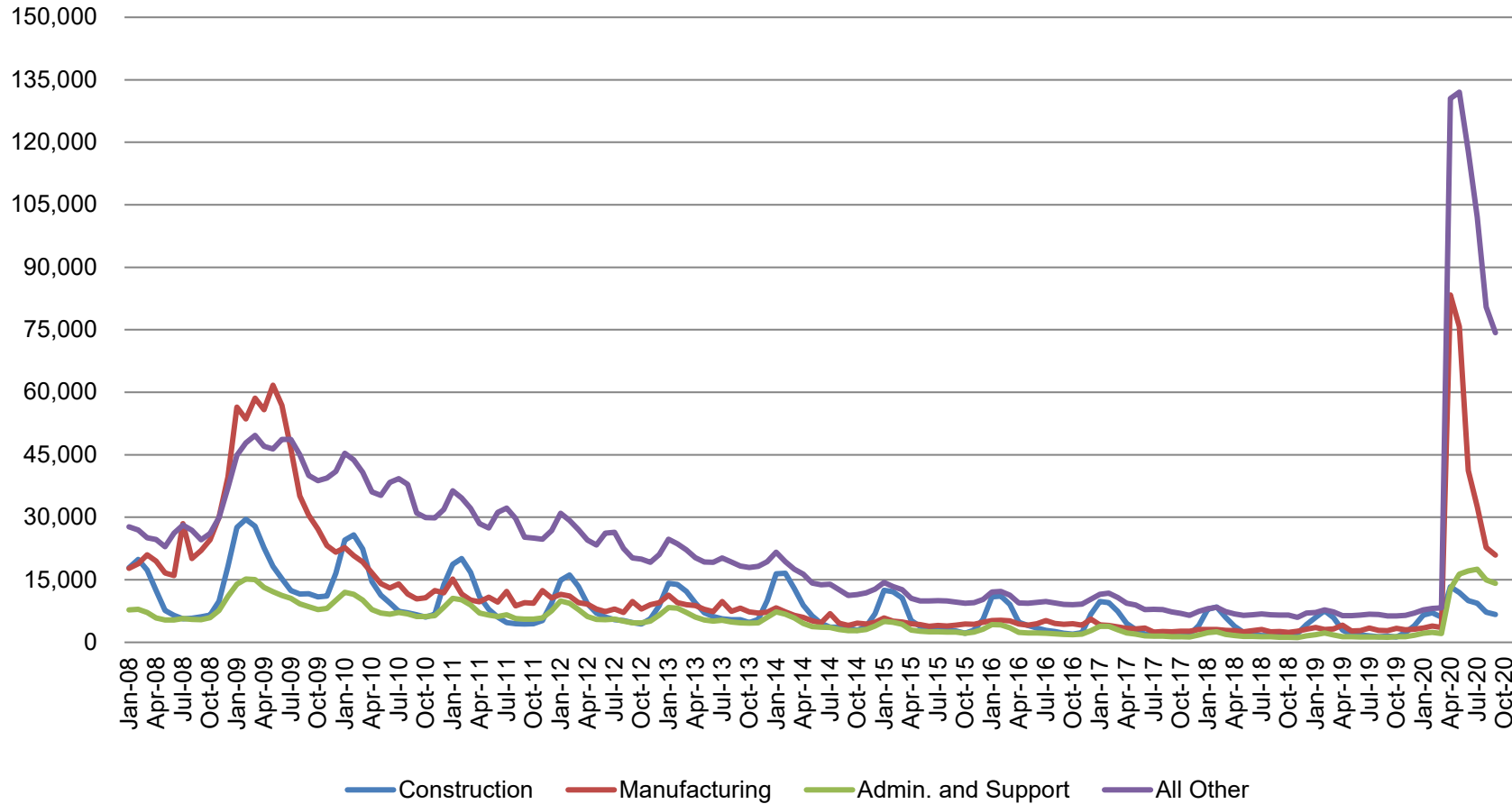
The Indiana Employment to Population Ratio for September 2020 is 59.1% compared to the U.S. at 56.6% and border states at 59.0% (August)



Source: Local Area Unemployment Statistics (seasonally adjusted)

Regular UI Claims by Industry

For the Reference Week of Each Month



Source: ETA 203

Midwest Comparison Rates: Seasonally Adjusted Over the Year and Over the Month

	Sep-19	Aug-20	Sep-20	Monthly change	Yearly change
Indiana	3.2%	6.4%	6.2%	-0.2%	3.0%
U.S.	3.5%	8.4%	7.9%	-0.5%	4.4%
Illinois	3.7%	11.0%	10.2%	-0.8%	6.5%
Kentucky	4.3%	7.5%	5.6%	-1.9%	1.3%
Michigan	3.9%	8.7%	8.5%	-0.2%	4.6%
Minnesota	3.2%	7.4%	6.0%	-1.4%	2.8%
Ohio	4.1%	8.9%	8.4%	-0.5%	4.3%
Wisconsin	3.4%	6.3%	5.4%	-0.9%	2.0%

***2019 Benchmark**

Confidential & Deliberative

Indiana: Labor Force by Gender and Age

	Civilian labor force participation rate	Unemployment rate
Both Sexes		
All Races		
Age 16+	63.5	6.6
Age 16-19	40.2	13.0
Age 20+	65.2	6.3
White		
Age 16+	63.4	6.0
Age 16-19	40.9	12.1
Age 20+	65.0	5.7
Black		
Age 16+	62.6	10.2
Age 16-19	52.1	12.4
Age 20+	63.1	10.1
Hispanic		
Age 16+	69.5	9.5
Age 16-19	37.7	9.6
Age 20+	74.6	9.5

Source: Table a. Employment status of the civilian non-institutional population by sex, age, race, and Hispanic origin, October 2019 – September 2020 (based on CPS) (Numbers in thousands)

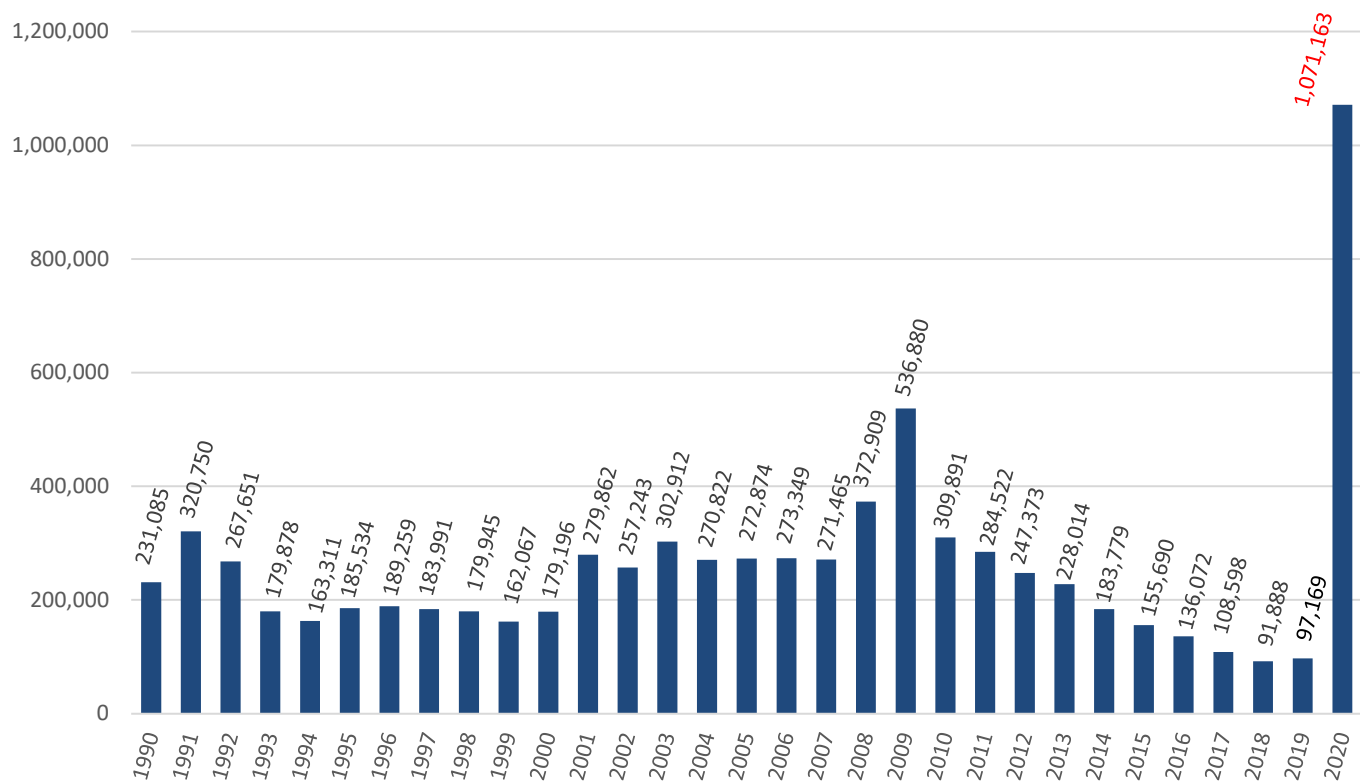
Indiana: Labor Force by Gender and Age

	Civilian labor force participation rate	Unemployment rate
Male, All Races		
Age 16+	69.4	6.2
Age 20+	71.8	5.9
Female, All Races		
Age 16+	57.9	7.1
Age 20+	59.0	6.8
Male, White		
Age 16+	69.6	5.7
Age 20+	71.8	5.4
Female, White		
Age 16+	57.5	6.3
Age 20+	58.7	6.0
Male, Black		
Age 16+	65.1	7.8
Age 20+	66.3	7.4
Female, Black		
Age 16+	60.4	12.5
Age 20+	60.4	12.6

Source: Table a. Employment status of the civilian non-institutional population by sex, age, race, and Hispanic origin, October 2019 - September 2020 (based on CPS) (Numbers in thousands)

Weekly Initial Claims – Week 39

Total aggregated UI claims for the first 35 weeks of each year as reported to ETA.



Regular UI Claims

Reference Week (12th of the month) Input to LAUS Unemployment Rate Model

Declines over the month- and over the year

	2009	2013	2014	2015	2016	2017	2018	2019	2020	OTM Change	OTY Change
JANUARY	150,888	63,223	49,377	41,333	36,555	33,137	24,968	21,808	23,526	6,710	1,718
FEBRUARY	154,388	60,183	52,316	39,282	36,909	32,463	25,879	23,992	25,050	1,524	1,058
MARCH	157,257	54,578	45,928	35,755	32,439	32,141	21,171	22,446	22,555	(2,495)	109
APRIL	143,842	48,548	39,717	25,597	23,895	21,998	17,618	17,914	264,727	242,172	246,813
MAY	141,174	42,997	32,460	22,807	22,300	19,431	14,774	14,411	256,319	(8,408)	241,908
JUNE	136,670	41,722	29,524	22,030	22,025	16,722	14,653	14,386	199,864	(56,455)	185,478
JULY	121,336	44,597	30,845	22,341	22,326	15,775	15,098	15,054	177,347	(22,517)	162,293
AUGUST	103,509	39,998	26,061	21,472	20,737	15,692	13,959	14,156	140,695	(36,652)	126,539
SEPTEMBER	92,680	39,563	23,685	20,941	19,372	14,334	12,981	13,620	122,585	(18,110)	108,965
OCTOBER	86,275	37,778	23,768	19,917	19,143	14,266	13,083	14,106			
NOVEMBER	82,451	38,517	25,315	21,199	19,547	14,347	15,499	14,274			
DECEMBER	91,814	42,484	30,982	26,249	24,599	17,345	16,693	16,816			

*Without earnings – Reference week claims

Purchasing Managers' Index (PMI)

- The Purchasing Managers Index (PMI) is a measure of the prevailing direction of economic trends in manufacturing.
- The PMI is based on a monthly survey of supply chain managers across 19 industries, covering both upstream and downstream activity.
- The value and movements in the PMI and its components can provide useful insight to business decision makers, market analysts, and investors, and is a leading indicator of overall economic activity in the U.S.

PMI is a number from 0 to 100. A PMI above 50 represents an expansion when compared with the previous month. A PMI reading under 50 represents a contraction.

MANUFACTURING AT A GLANCE						
September 2020						
Index	Series Index	Series Index	Percentage	Direction	Rate of Change	Trend* (Months)
	Sep	Aug	Point			
			Change			
Manufacturing PMI®	55.4	56	-0.6	Growing	Slower	4
New Orders	60.2	67.6	-7.4	Growing	Slower	4
Production	61	63.3	-2.3	Growing	Slower	4
Employment	49.6	46.4	3.2	Contracting	Slower	14
Supplier Deliveries	59	58.2	0.8	Slowing	Faster	11
Inventories	47.1	44.4	2.7	Contracting	Slower	3
Customers' Inventories	37.9	38.1	-0.2	Too Low	Faster	48
Prices	62.8	59.5	3.3	Increasing	Faster	4
Backlog of Orders	55.2	54.6	0.6	Growing	Faster	3
New Export Orders	54.3	53.3	1	Growing	Faster	3
Imports	54	55.6	-1.6	Growing	Slower	3
OVERALL ECONOMY				Growing	Slower	5
Manufacturing Sector				Growing	Slower	4