

# Indiana's Employment and Labor Force Estimates October 2020

11/20/2020

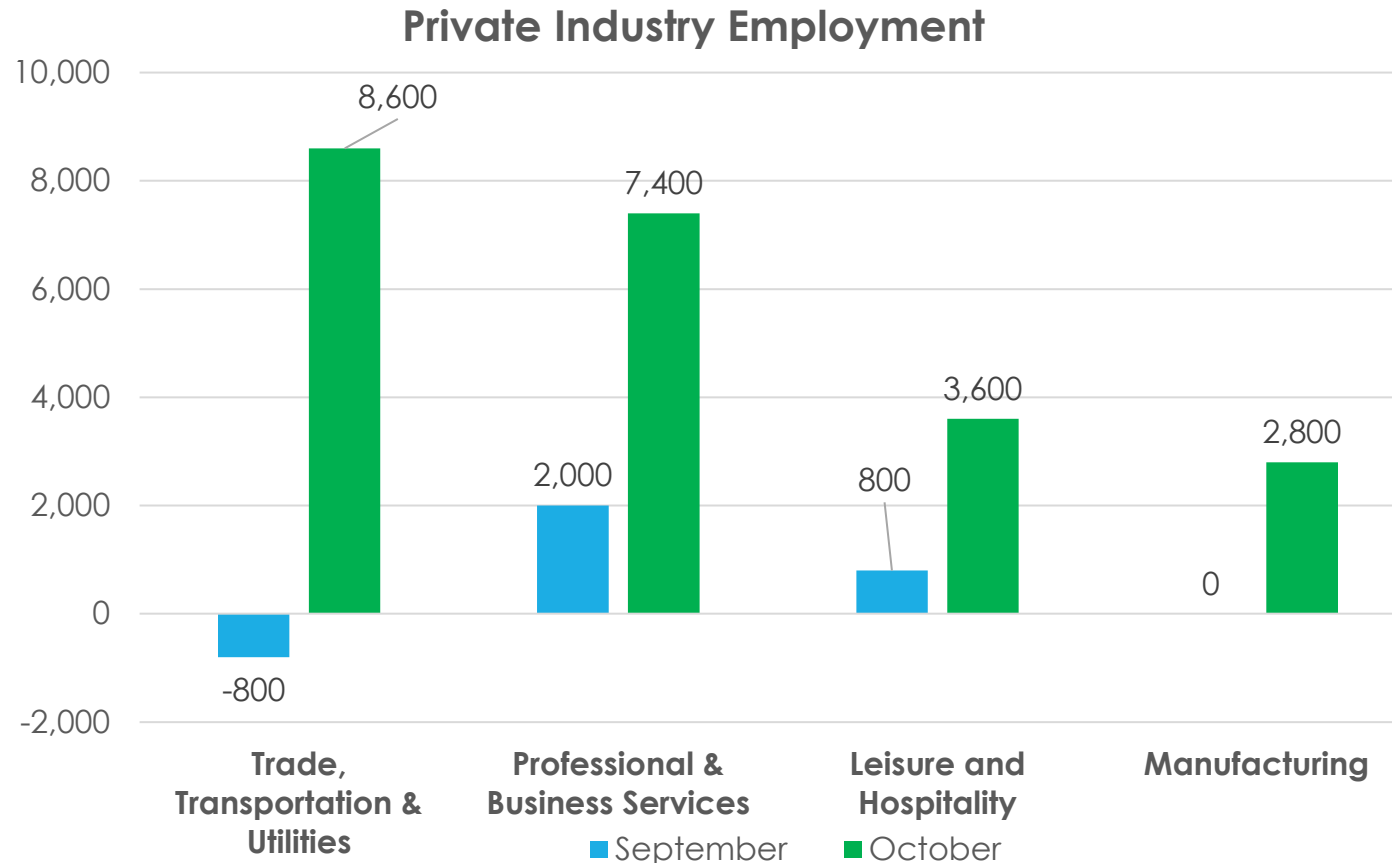
# Key Points

- **Indiana's unemployment rate stands at 5.0% in October 2020. The U.S. is at 6.9%.**
- **Indiana's Labor Force is at 3,341,300.**
- Indiana's Labor Force decreased 7,271 due to an increase in employment of 34,532 and a decrease in unemployment of 41,803.
- Indiana's Labor Force has decreased 48,144 over the year.
- Indiana's Labor Force Participation Rate is at 63.1%. This is above the U.S. Labor Force Participation Rate of 61.7%.

## Key Points: October 2020

### Indiana's Private Employment

- Increased by 23,300 jobs over the month and had loses of 83,900 over the year.
- October private employment = 2,645,400.



## Revisions to September 2020 Estimates

Revisions to September 2020 Estimates						
INDUSTRY TITLE	Aug	Sep Prel	Sep Rev	Revision	Chg from Aug	Pre Chg from Aug
Total Nonfarm	3045.2	3033.5	3038.4	4.9	-6.8	-11.7
Total Private	2627.6	2623.1	2622.1	-1.0	-5.5	-4.5
Goods Producing	656.2	654.8	650.6	-4.2	-5.6	-1.4
Service-Providing	2389.0	2378.7	2387.8	9.1	-1.2	-10.3
Private Service Providing	1971.4	1968.3	1971.5	3.2	0.1	-3.1
Construction	147.8	146.5	147.7	1.2	-0.1	-1.3
Manufacturing	503.0	503.0	497.6	-5.4	-5.4	0.0
Trade, Transportation, and Utilities	583.3	582.5	583.1	0.6	-0.2	-0.8
Wholesale Trade	116.3	115.3	115.6	0.3	-0.7	-1.0
Retail Trade	307.4	306.1	306.4	0.3	-1.0	-1.3
Transportation, Warehousing, and Utilities	159.6	161.1	161.1	0.0	1.5	1.5
Information	25.5	25.5	25.4	-0.1	-0.1	0.0
Financial Activities	139.0	139.1	139.2	0.1	0.2	0.1
Finance and Insurance	105.3	105.2	105.2	0.0	-0.1	-0.1
Real Estate and Rental and Leasing	33.7	33.9	34.0	0.1	0.3	0.2
Professional and Business Services	339.5	341.5	342.7	1.2	3.2	2.0
Professional, Scientific, and Technical Services	122.5	122.1	122.1	0.0	-0.4	-0.4
Management of Companies and Enterprises	33.6	33.7	33.8	0.1	0.2	0.1
Admin & Support & Waste Mgmt & Remediation Services	183.4	185.7	186.8	1.1	3.4	2.3
Education and Health Services	465.3	461.3	464.3	3.0	-1.0	-4.0
Educational Services	63.1	57.3	59.8	2.5	-3.3	-5.8
Health Care and Social Assistance	402.2	404.0	404.5	0.5	2.3	1.8
Leisure and Hospitality	293.5	294.3	292.3	-2.0	-1.2	0.8
Other Services	125.3	124.1	124.5	0.4	-0.8	-1.2
Government	417.6	410.4	416.3	5.9	-1.3	-7.2

# Comparing Local Area Unemployment Statistics (LAUS) and Current Employment Statistics (CES)

## **LAUS** (Labor Force by Residence)

**This counts people, not jobs, and is...**

- An estimate of employment based on where the employee lives, rather than where they work
- Used in calculating the labor force

## **CES** (Employment by Job)

**This counts jobs, not people, and is...**

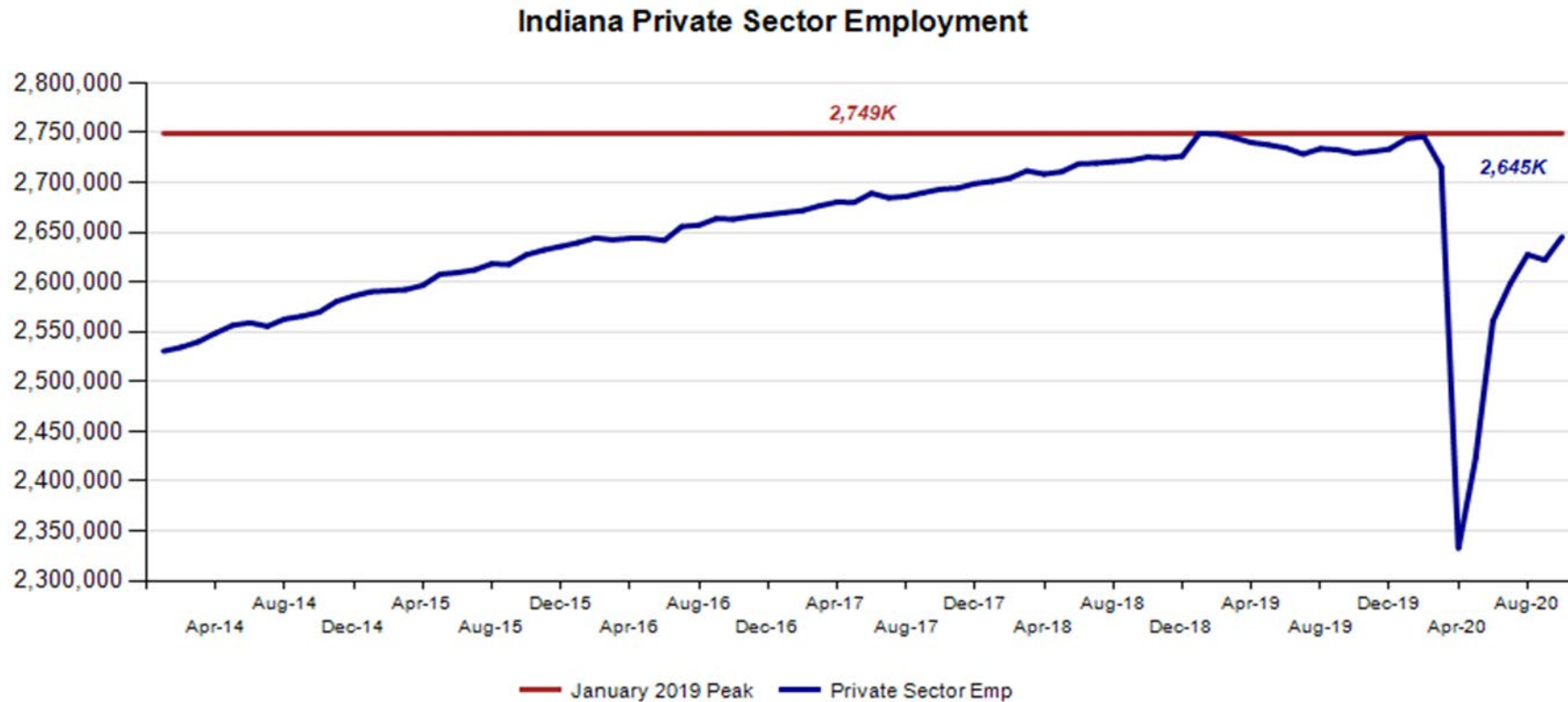
- An estimate of employment based on the location of the job regardless of the worker's residence
- Also called nonag wage and salary or nonfarm employment
- Used in Quarterly Census of Employment and Wages (QCEW), Occupational Employment Statistics (OES) and CES data

# CES Monthly Jobs Report



## Indiana Private Sector Employment

October 2020 total private employment is 103,900 below the January 2019 peak.



# Indiana Private Sector Employment Change

**October 2020 increased by 23,300 jobs over the month and is down 83,900 jobs over the year.**

IN Employment Change Over the Month, Year-to-Date and Over the Year (seasonally adjusted)

Industry	October 2019	December 2019	September 2020	October 2020	Month Change	Y-to-D Change	Y-to-Y Change
Private Educational & Health Services	483.2	484.1	464.3	464.7	0.4	-19.4	-18.5
.....Private Educational Services	63.4	63.2	59.8	57.5	-2.3	-5.7	-5.9
.....Health Care & Social Assistance	419.8	420.9	404.5	407.2	2.7	-13.7	-12.6
Manufacturing	537.1	539.5	497.6	500.4	2.8	-39.1	-36.7
Professional & Business Services	343.4	343.1	342.7	350.1	7.4	7.0	6.7
Financial Activities	142.7	141.1	139.2	139.3	0.1	-1.8	-3.4
Construction	148.0	148.0	147.7	146.8	-0.9	-1.2	-1.2
Leisure and Hospitality	312.3	309.6	292.3	295.9	3.6	-13.7	-16.4
Trade, Transportation & Utilities	593.8	598.9	583.1	591.7	8.6	-7.2	-2.1
.....Trade	434.6	437.8	422.0	427.6	5.6	-10.2	-7.0
.....Transportation, Warehousing & Utilities	159.2	161.1	161.1	164.1	3.0	3.0	4.9
All Other	168.8	169.2	155.2	156.5	1.3	-12.7	-12.3
Total Private	2,729.3	2,733.5	2,622.1	2,645.4	23.3	-88.1	-83.9
Government (Includes Public Schools & Hospitals)	428.3	429.5	416.3	411.0	-5.3	-18.5	-17.3
Total Nonfarm	3,157.6	3,163.0	3,038.4	3,056.4	18.0	-106.6	-101.2
United States Total Private	128,908.0	129,319.0	119,938.0	120,844.0	906.0	-8,475.0	-8,064.0

- Trade, Transportation & Utilities **recovered 8,600** jobs over the month.
- Professional & Business Services **recovered 7,400** jobs over the month

Source: Current Employment Statistics (seasonally adjusted)

For month to month change, [visit this link.](#)



# Indiana Private Sector Employment Change From Peak and Trough

October 2020 estimates show Indiana private jobs decreased 103,900 since January 2019.

IN Statewide Estimates (seasonally adjusted) -- October 2020

Supersector	Private Empl. Peak Jan 2019	Private Empl. Trough July 2009	September 2020	October 2020	Month to Month Change	Change Since Peak	Change Since Trough	% Month to Month Change
Private Educational & Health Services	479.7	411.1	464.3	464.7	0.4	-15.0	53.6	0.1%
.....Private Educational Services	65.5	63.3	59.8	57.5	-2.3	-8.0	-5.8	-3.8%
.....Health Care & Social Assistance	414.2	347.8	404.5	407.2	2.7	-7.0	59.4	0.7%
Manufacturing	545.1	427.3	497.6	500.4	2.8	-44.7	73.1	0.6%
Professional & Business Services	344.9	256.8	342.7	350.1	7.4	5.2	93.3	2.2%
Financial Activities	140.7	130.7	139.2	139.3	0.1	-1.4	8.6	0.1%
Construction	147.6	117.4	147.7	146.8	-0.9	-0.8	29.4	-0.6%
Leisure and Hospitality	317.4	276.8	292.3	295.9	3.6	-21.5	19.1	1.2%
Trade, Transportation & Utilities	603.9	545.6	583.1	591.7	8.6	-12.2	46.1	1.5%
.....Trade	443.9	421.5	422.0	427.6	5.6	-16.3	6.1	1.3%
.....Transportation, Warehousing & Utilities	160.0	124.1	161.1	164.1	3.0	4.1	40.0	1.9%
All Other	170.0	161.7	155.2	156.5	1.3	-13.5	-5.2	0.8%
Total Private	2,749.3	2,327.4	2,622.1	2,645.4	23.3	-103.9	318.0	0.9%
Government (Includes Public Schools & Hospitals)	429.9	434.5	416.3	411.0	-5.3	-18.9	-23.5	-1.3%
Total Nonfarm	3,179.2	2,761.9	3,038.4	3,056.4	18.0	-122.8	294.5	0.6%
United States Total Private	127,628.0	108,147.0	119,938.0	120,844.0	906.0	-6,784.0	12,697.0	0.8%

For historical data, [visit this link.](#)

Source: Current Employment Statistics (seasonally adjusted)

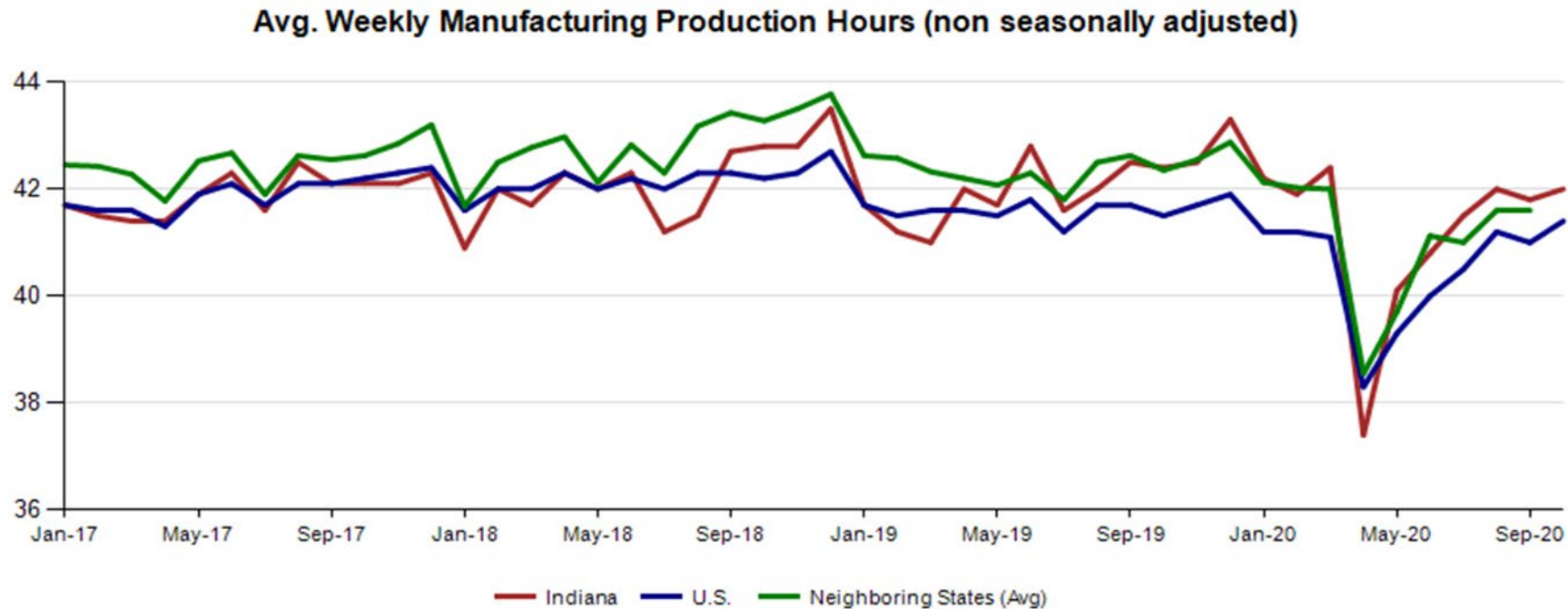
# Indiana Private Sector Employment Changes 2020 Before and During Pandemic

Supersector	February 2020	March 2020	April 2020	May 2020	June 2020	July 2020	September 2020	October 2020	Feb-Apr job loss	April to Oct. Chg	Chg Since Feb
Private Educational & Health Services	487.2	485.1	430.0	439.7	454.8	460.5	464.3	464.7	-57.2	34.7	-22.5
.....Private Educational Services	65.9	64.8	50.1	50.9	56.7	59.8	59.8	57.5	-15.8	7.4	-8.4
.....Health Care & Social Assistance	421.3	420.3	379.9	388.8	398.1	400.7	404.5	407.2	-41.4	27.3	-14.1
Manufacturing	535.1	527.9	450.3	469.7	496.0	496.2	497.6	500.4	-84.8	50.1	-34.7
Professional & Business Services	343.1	342.0	305.1	308.0	324.7	334.3	342.7	350.1	-38.0	45.0	7.0
Financial Activities	143.0	141.6	138.8	138.3	138.5	139.0	139.2	139.3	-4.2	0.5	-3.7
Construction	152.3	149.1	134.8	142.7	146.2	146.5	147.7	146.8	-17.5	12.0	-5.5
Leisure and Hospitality	314.3	302.7	186.4	222.8	268.6	289.3	292.3	295.9	-127.9	109.5	-18.4
Trade, Transportation & Utilities	601.8	598.9	553.7	561.4	577.1	577.2	583.1	591.7	-48.1	38.0	-10.1
.....Trade	439.8	437.4	400.1	407.7	419.0	419.4	422.0	427.6	-39.7	27.5	-12.2
.....Transportation, Warehousing & Utilities	162.0	161.5	153.6	153.7	158.1	157.8	161.1	164.1	-8.4	10.5	2.1
All Other	169.2	168.1	133.6	140.9	155.1	155.3	155.2	156.5	-35.6	22.9	-12.7
Total Private	2,746.0	2,715.4	2,332.7	2,423.5	2,561.0	2,598.3	2,622.1	2,645.4	-413.3	312.7	-100.6
Government (Includes Public Schools & Hospitals)	433.6	431.8	411.0	407.7	407.6	410.4	416.3	411.0	-22.6	0.0	-22.6
Total Nonfarm	3,179.6	3,147.2	2,743.7	2,831.2	2,968.6	3,008.7	3,038.4	3,056.4	-435.9	312.7	-123.2
United States Total Private	129,740.0	128,855.0	108,638.0	111,759.0	116,500.0	117,973.0	119,938.0	120,844.0	-21,102.0	12,206.0	-8,896.0

Source: Current Employment Statistics (seasonally adjusted)

# Avg. Weekly Manufacturing Production Hours

*October 2020 average weekly hours for Indiana manufacturing production hours increased by 0.2 hours to 42.0 hours. National manufacturing hours increased by 0.4 hours to 41.4 weekly hours, and Midwest states remained at 41.6 hours (September 2020 data).*



# Monthly Labor Force Report

## Jobs Data for October 2020

Month NSA	Labor Force	Employed	Unemployed	IN Rate	Total NonFarm	Total Private	Regular UI Claims
Dec-16	3,288,631	3,161,080	127,551	3.9	3,118,700	2,681,300	24,599
Oct-20	3,353,337	3,192,625	160,712	4.8	3,089,400	2,663,800	74,659
Change	64,706	31,545	33,161	0.9	(29,300)	(17,500)	50,060

Month SA	Labor Force	Employed	Unemployed	IN Rate	Total NonFarm	Total Private	Regular UI Claims
Dec-16	3,320,863	3,187,493	133,370	4.0	3,094,300	2,667,700	24,599
Oct-20	3,341,300	3,173,599	167,701	5.0	3,056,400	2,645,400	74,659
Change	20,437	(13,894)	34,331	1.0	(37,900)	(22,300)	50,060

**Table 1: Year-to-Date Benchmarked Model Estimates**  
**Table 1a: Seasonally Adjusted #**  
(SSA Est. appear as the seasonally adjusted in BLS and State official publications and databases)

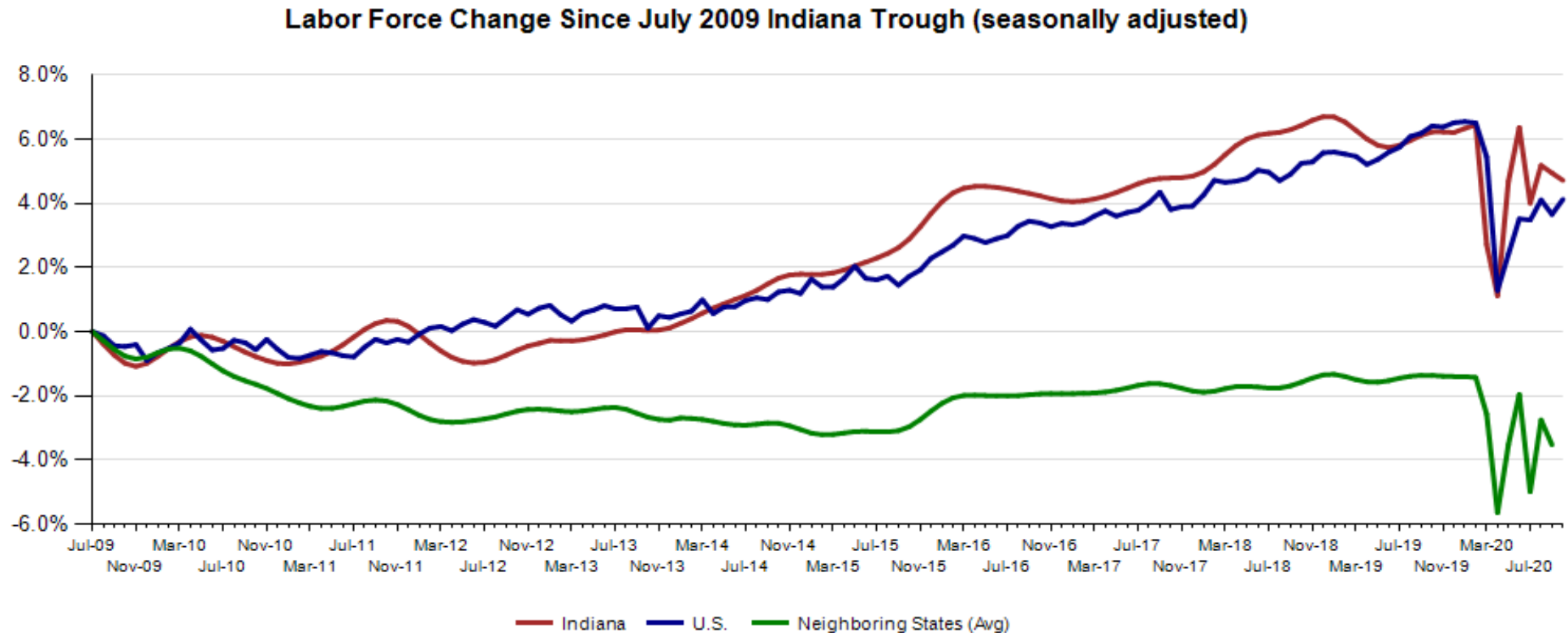
	Labor Force		Employment		Unemployment		
Month	Level	LFP	Level	EP	Level	Rate	Error Range <sup>+</sup>
JAN	3,392,922	64.4	3,286,146	62.4	106,776	3.1	2.6- 3.7
FEB	3,396,229	64.4	3,291,040	62.5	105,189	3.1	2.6- 3.6
MAR	**3,277,678	**62.2	**3,177,786	**60.3	* 99,892	3.0	2.5- 3.6
APR	3,226,630	* 61.2	**2,660,808	**50.4	**565,822	**17.5	15.9-19.2
MAY	**3,340,305	**63.3	**2,930,891	**55.5	**409,414	**12.3	10.9-13.6
JUN	**3,393,875	**64.3	**3,017,294	**57.1	**376,581	**11.1	10.0-12.1
JUL	**3,318,673	**62.8	**3,057,572	**57.8	**261,101	**7.9	6.9- 8.8
AUG	**3,356,226	**63.5	**3,141,656	**59.4	**214,570	**6.4	5.6- 7.2
SEP	3,348,571	63.3	3,139,067	59.3	209,504	6.3	5.5- 7.0
OCT	3,341,300	63.1	**3,173,599	**59.9	**167,701	**5.0	4.3- 5.8



## Indiana Labor Force Pct. Change Since July '09 Indiana Trough

*October 2020 Indiana Seasonally Adjusted Labor Force stands at 3,341,300.*

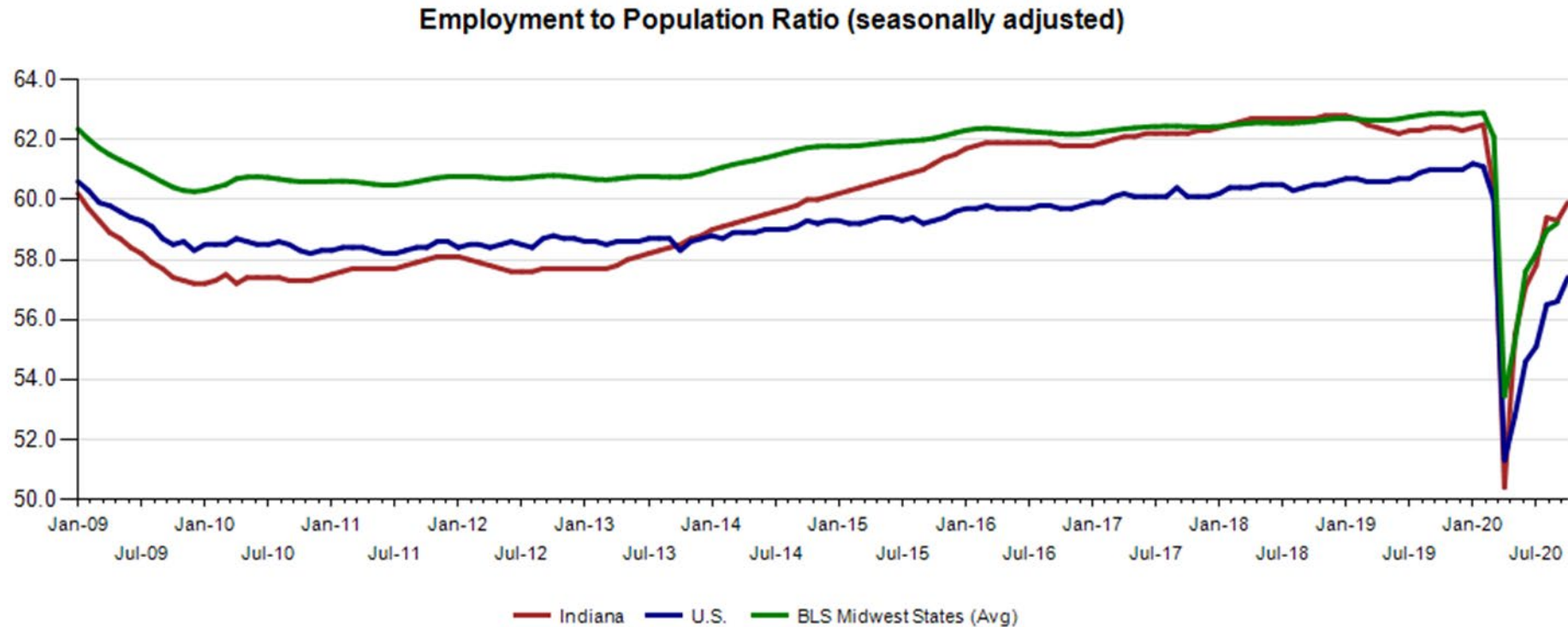
- Employed labor force **increased 34,532** over the month.
- Unemployment **decreased by 41,803** over the month.



Source: Local Area Unemployment Statistics (seasonally adjusted)

## Employment to Population Ratio (seasonally adjusted)

***The Indiana Employment to Population Ratio for October 2020 is 59.9% compared to the U.S. at 57.4% and border states at 59.2% (Sept. Data)***



Source: Local Area Unemployment Statistics (seasonally adjusted)

## Midwest Comparison Rates: Seasonally Adjusted Over the Year and Over the Month

	Oct-19	Sep-20	Oct-20	Monthly change	Yearly change
Indiana	3.2%	6.3%	5.0%	-1.3%	1.8%
U.S.	3.6%	7.9%	6.9%	-1.0%	3.3%
Illinois	3.7%	10.4%	6.8%	-3.6%	3.1%
Kentucky	4.3%	5.6%	7.4%	1.8%	3.1%
Michigan	3.9%	8.6%	5.5%	-3.1%	1.6%
Minnesota	3.3%	5.9%	4.6%	-1.3%	1.3%
Ohio	4.1%	8.3%	5.6%	-2.7%	1.5%
Wisconsin	3.5%	5.4%	5.7%	0.3%	2.2%

\*2019 Benchmark

Confidential & Deliberative

## Indiana: Labor Force by Gender and Age

	Civilian labor force participation rate	Unemployment rate
<b>Both Sexes</b>		
<b>All Races</b>		
Age 16+	63.4	6.8
Age 16-19	40.4	13.7
Age 20+	65.1	6.5
<b>White</b>		
Age 16+	63.5	6.1
Age 16-19	41.2	12.8
Age 20+	65.1	5.8
<b>Black</b>		
Age 16+	61.5	10.7
Age 16-19	51.6	14.9
Age 20+	62.0	10.5
<b>Hispanic</b>		
Age 16+	69.4	9.4
Age 16-19	35.8	12.8
Age 20+	74.9	9.2

Source: Table a. Employment status of the civilian non-institutional population by sex, age, race, and Hispanic origin, November 2019 - October 2020 (based on CPS) (Numbers in thousands)

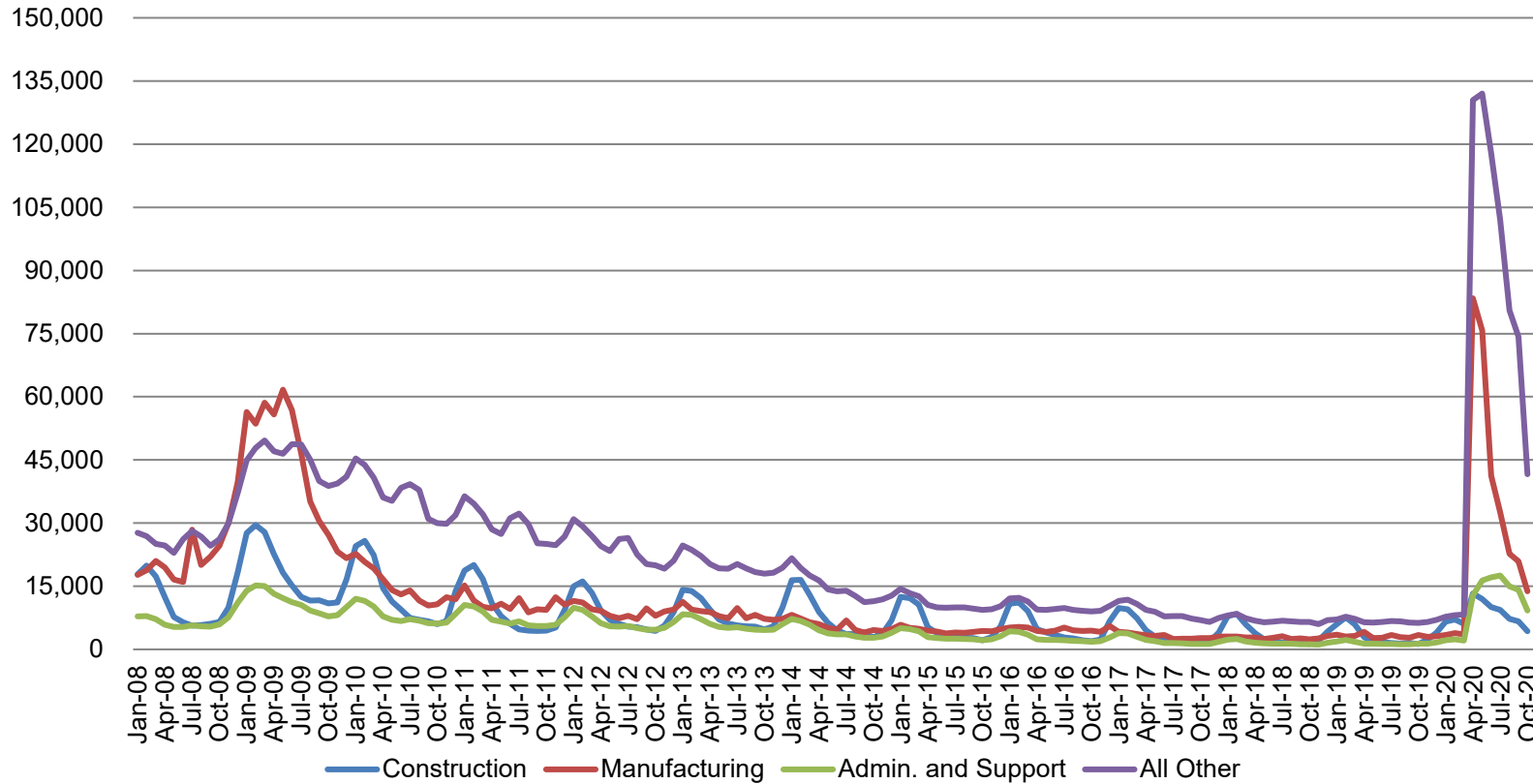
## Indiana: Labor Force by Gender and Age

	Civilian labor force participation rate	Unemployment rate
<b>Male, All Races</b>		
Age 16+	69.3	6.4
Age 20+	71.6	6.0
<b>Female, All Races</b>		
Age 16+	57.9	7.2
Age 20+	59.0	7.0
<b>Male, White</b>		
Age 16+	69.7	6.0
Age 20+	71.8	5.6
<b>Female, White</b>		
Age 16+	57.6	6.4
Age 20+	58.8	6.1
<b>Male, Black</b>		
Age 16+	63.6	8.1
Age 20+	64.7	7.6
<b>Female, Black</b>		
Age 16+	59.6	13.1
Age 20+	59.7	13.2

Source: Table a. Employment status of the civilian non-institutional population by sex, age, race, and Hispanic origin, November 2019 - October 2020 (based on CPS) (Numbers in thousands)

## Regular UI Claims by Industry

For the Reference Week of Each Month

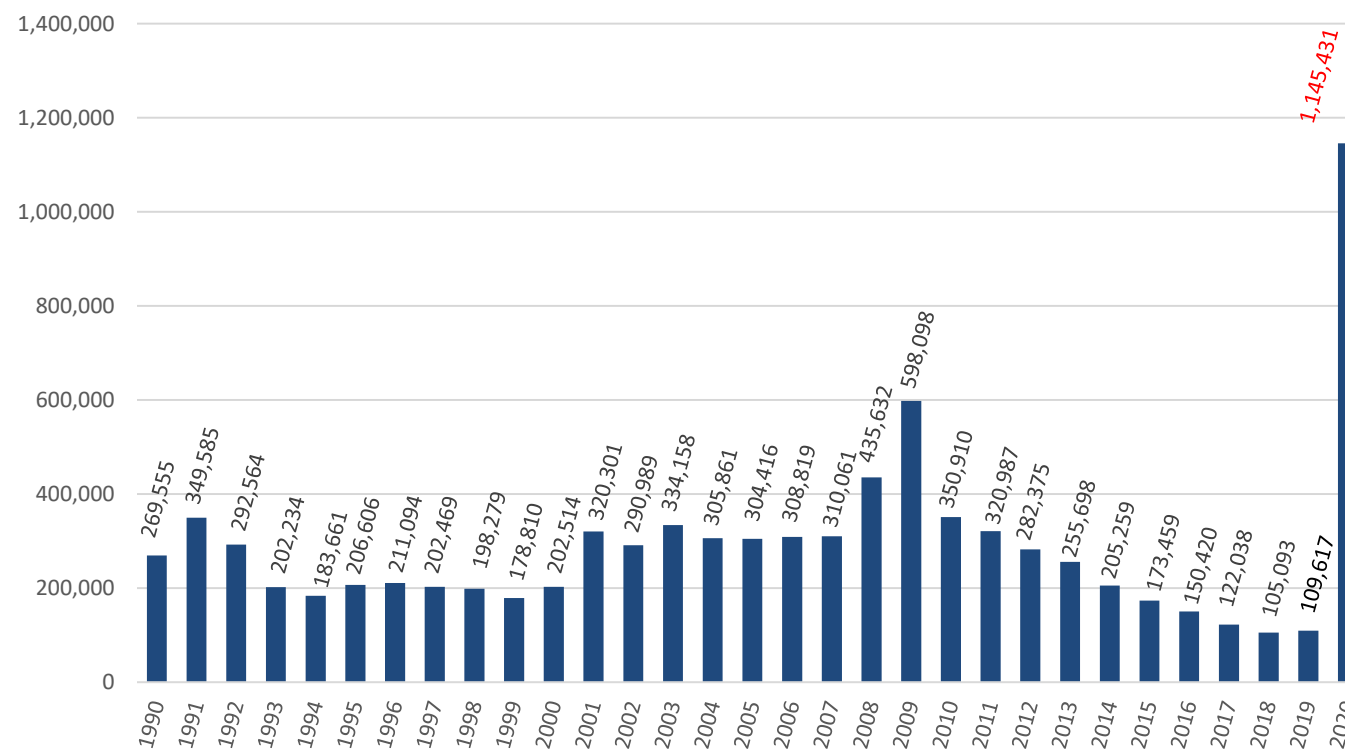


Source: ETA 203



## Weekly Initial Claims – Week 44

Total aggregated UI claims for the first 44 weeks of each year as reported to ETA.



## Regular UI Claims

Reference Week (12th of the month) Input to LAUS Unemployment Rate Model

	2009	2013	2014	2015	2016	2017	2018	2019	2020	OTM Change	OTY Change
JANUARY	150,888	63,223	49,377	41,333	36,555	33,137	24,968	21,808	23,526	6,710	1,718
FEBRUARY	154,388	60,183	52,316	39,282	36,909	32,463	25,879	23,992	25,050	1,524	1,058
MARCH	157,257	54,578	45,928	35,755	32,439	32,141	21,171	22,446	22,555	(2,495)	109
APRIL	143,842	48,548	39,717	25,597	23,895	21,998	17,618	17,914	264,727	242,172	246,813
MAY	141,174	42,997	32,460	22,807	22,300	19,431	14,774	14,411	256,319	(8,408)	241,908
JUNE	136,670	41,722	29,524	22,030	22,025	16,722	14,653	14,386	199,864	(56,455)	185,478
JULY	121,336	44,597	30,845	22,341	22,326	15,775	15,098	15,054	177,347	(22,517)	162,293
AUGUST	103,509	39,998	26,061	21,472	20,737	15,692	13,959	14,156	140,695	(36,652)	126,539
SEPTEMBER	92,680	39,563	23,685	20,941	19,372	14,334	12,981	13,620	127,098	(13,597)	113,478
OCTOBER	86,275	37,778	23,768	19,917	19,143	14,266	13,083	14,106	74,659	(52,439)	60,553
NOVEMBER	82,451	38,517	25,315	21,199	19,547	14,347	15,499	14,274			
DECEMBER	91,814	42,484	30,982	26,249	24,599	17,345	16,693	16,816			

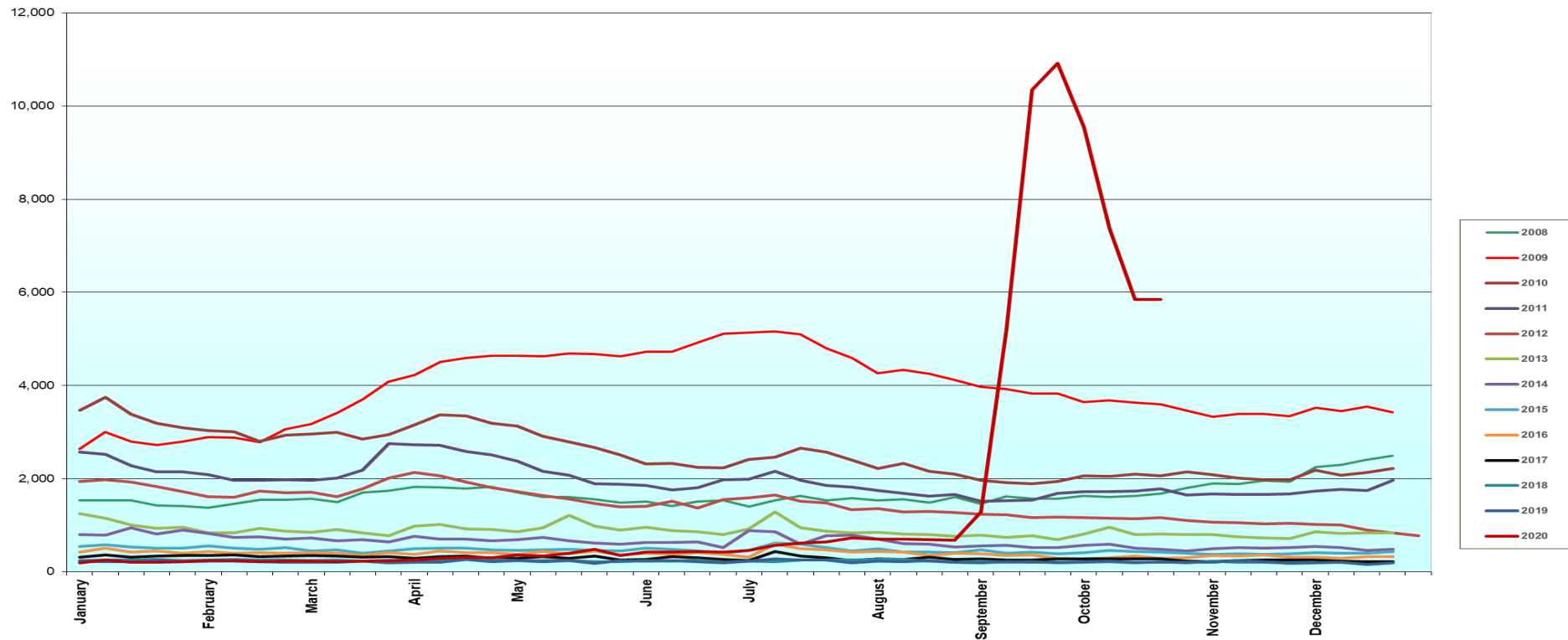
\*Without earnings – Reference week claims

## Exhaustion Claims 2008 to present

*Indiana had 11,369 Exhausted Claims for all of 2019.*

*By comparison there were over 55,000 Exhaustions from the weeks of September 12<sup>th</sup> to October 24<sup>th</sup> 2020.*

Exhaustions 2008-2020



## Purchasing Managers' Index (PMI)

- The Purchasing Managers Index (PMI) is a measure of the prevailing direction of economic trends in manufacturing.
- The PMI is based on a monthly survey of supply chain managers across 19 industries, covering both upstream and downstream activity.
- The value and movements in the PMI and its components can provide useful insight to business decision makers, market analysts, and investors, and is a leading indicator of overall economic activity in the U.S.

PMI is a number from 0 to 100. A PMI above 50 represents an expansion when compared with the previous month. A PMI reading under 50 represents a contraction.

MANUFACTURING AT A GLANCE						
October 2020						
Index	Series Index Oct	Series Index Sep	Percentage Point Change	Direction	Rate of Change	Trend* (Months)
<b>Manufacturing PMI®</b>	59.3	55.4	3.9	Growing	Faster	5
<b>New Orders</b>	67.9	60.2	7.7	Growing	Faster	5
<b>Production</b>	63	61	2	Growing	Faster	5
<b>Employment</b>	53.2	49.6	3.6	Growing	From Contracting	1
<b>Supplier Deliveries</b>	60.5	59	1.5	Slowing	Faster	12
<b>Inventories</b>	51.9	47.1	4.8	Growing	From Contracting	1
<b>Customers' Inventories</b>	36.7	37.9	-1.2	Too Low	Faster	49
<b>Prices</b>	65.5	62.8	2.7	Increasing	Faster	5
<b>Backlog of Orders</b>	55.7	55.2	0.5	Growing	Faster	4
<b>New Export Orders</b>	55.7	54.3	1.4	Growing	Faster	4
<b>Imports</b>	58.1	54	4.1	Growing	Faster	4
<b>OVERALL ECONOMY</b>				Growing	Faster	6
<b>Manufacturing Sector</b>				Growing	Faster	5