

11/15/2019

Indiana's Employment and Labor Force Estimates

October 2019

INDIANA
DEPARTMENT OF
WORKFORCE
DEVELOPMENT

Key Points: October 2019

Unemployment Rate

- Indiana = 3.2%
- U.S. = 3.6%

Indiana's rate is down 0.3% over the year from October 2018.

Indiana's Labor Force

- Over the month Labor Force increased 567 due to an increase in employment of 1,964 and a decrease in unemployment of 1,397.
- Over the year, labor force decreased by 7,630.
- Indiana's labor force participation rate fell by 0.1% over the month to 64.4%. This remains above the U.S. labor force participation rate of 63.3%.

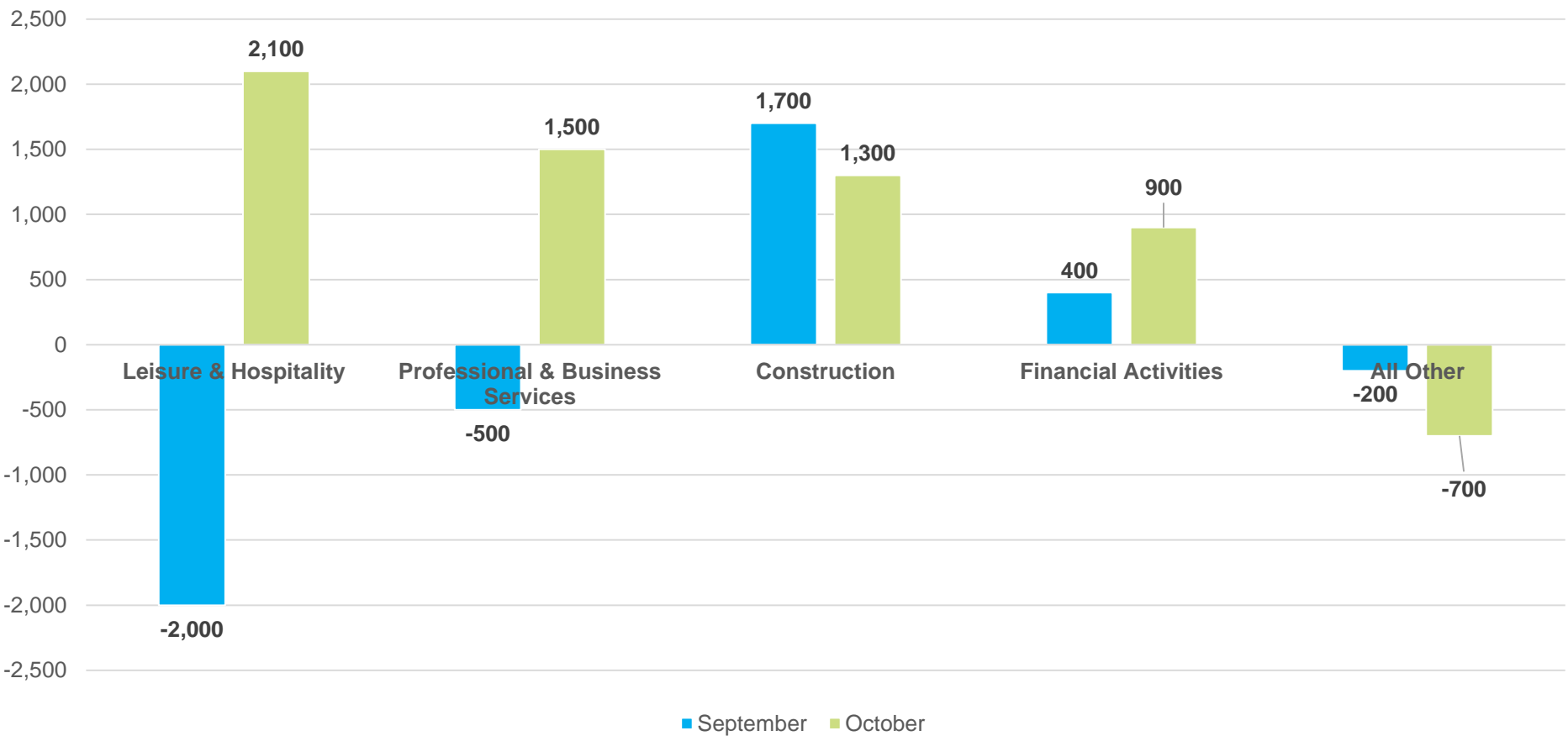
For historical labor force participation data, [visit this link](#).



Key Points: October 2019

Indiana's Private Employment

- decreased by 2,000 over the month and had gains of 16,500 over the year.
- October private employment = 2,734,500.



Revisions to September 2019 Estimates

Revisions to September 2019 Estimates						
INDUSTRY TITLE	Aug	Sep Prel	Sep Rev	Revision	Chg from Aug	Pre Chg from Aug
Total Nonfarm	3166.7	3168.2	3165.4	-2.8	-1.3	1.5
Total Private	2741.1	2737.7	2736.5	-1.2	-4.6	-3.4
Goods Producing	695.6	696.3	696.1	-0.2	0.5	0.7
Service-Providing	2471.1	2471.9	2469.3	-2.6	-1.8	0.8
Private Service Providing	2045.5	2041.4	2040.4	-1.0	-5.1	-4.1
Construction	148.9	150.6	151.2	0.6	2.3	1.7
Manufacturing	540.4	539.4	538.6	-0.8	-1.8	-1.0
Trade, Transportation, and Utilities	595.5	594.7	594.4	-0.3	-1.1	-0.8
Wholesale Trade	119.7	119.1	119.1	0.0	-0.6	-0.6
Retail Trade	316.8	317.1	317.1	0.0	0.3	0.3
Transportation, Warehousing, and Utilities	159.0	158.5	158.2	-0.3	-0.8	-0.5
Information	27.7	27.5	27.8	0.3	0.1	-0.2
Financial Activities	139.1	139.5	139.9	0.4	0.8	0.4
Finance and Insurance	103.8	104.5	104.3	-0.2	0.5	0.7
Real Estate and Rental and Leasing	35.3	35.0	35.6	0.6	0.3	-0.3
Professional and Business Services	351.0	350.5	350.5	0.0	-0.5	-0.5
Professional, Scientific, and Technical Services	124.6	123.8	123.5	-0.3	-1.1	-0.8
Management of Companies and Enterprises	33.8	33.9	34.0	0.1	0.2	0.1
Admin & Support & Waste Mgmt & Remediation Services	192.6	192.8	193.0	0.2	0.4	0.2
Education and Health Services	494.3	493.3	492.6	-0.7	-1.7	-1.0
Educational Services	71.9	68.3	66.9	-1.4	-5.0	-3.6
Health Care and Social Assistance	422.4	425.0	425.7	0.7	3.3	2.6
Leisure and Hospitality	307.3	305.3	304.7	-0.6	-2.6	-2.0
Other Services	130.6	130.6	130.5	-0.1	-0.1	0.0
Government	425.6	430.5	428.9	-1.6	3.3	4.9



Midwestern Sector Employment Change Compared to Indiana

Percentage growth ranking comparison of Midwestern States and selected industry sectors since the Indiana low point. (September data)

October	TNF	Private	Construction	Manufacturing	Professional & Business Services	Educational & Health Services
Illinois	33	32	41	30	28	36
Indiana	18	19	17	4	13	25
Kentucky	25	23	37	8	23	35
Michigan	16	17	11	2	17	49
Minnesota	24	24	9	25	38	28
Ohio	26	27	27	17	37	38
Wisconsin	35	34	19	22	29	42

• Since July 2009, three Midwestern States were among the top 10 in manufacturing growth over this time.

Comparing Local Area Unemployment Statistics (LAUS) and Current Employment Statistics (CES)

LAUS (Labor Force by Residence)

This counts people, not jobs, and is...

- An estimate of employment based on where the employee lives, rather than where they work
- Used in calculating the labor force

CES (Employment by Job)

This counts jobs, not people, and is...

- An estimate of employment based on the location of the job regardless of the worker's residence
- Also called nonag wage and salary or nonfarm employment
- Used in Quarterly Census of Employment and Wages (QCEW), Occupational Employment Statistics (OES) and CES data

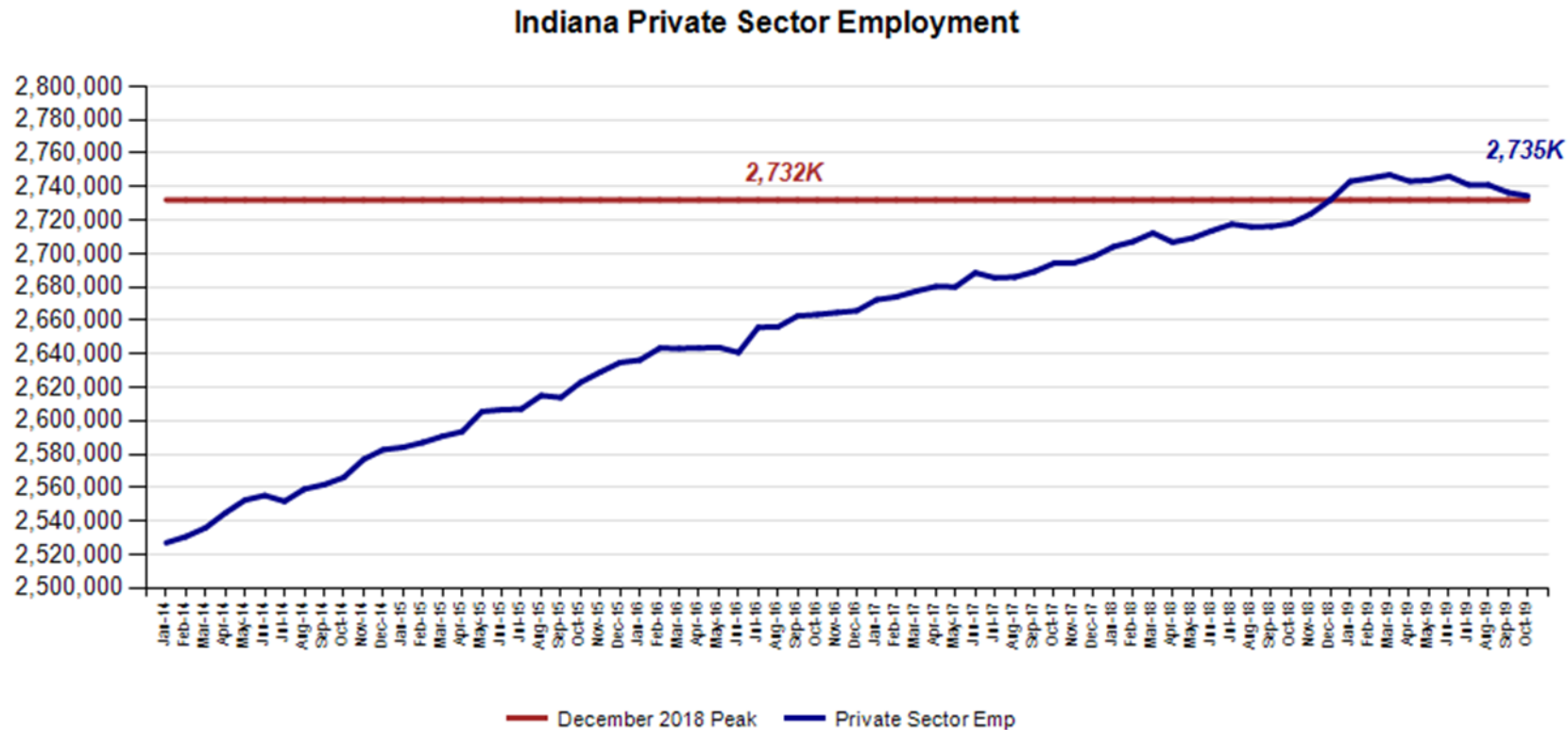
CES Monthly Jobs Report

INDIANA
DEPARTMENT OF
WORKFORCE
DEVELOPMENT

MONTHLY
BRIEFING

Indiana Private Sector Employment

October total private employment is 2,400 above the December 2018 peak.



Indiana Private Sector Employment Change

October 2019 decreased by 2,000 jobs over the month and is up 16,500 over the year.

IN Employment Change Over the Month, Year-to-Date and Over the Year (seasonally adjusted)

Industry	October 2018	December 2018	September 2019	October 2019	Month Change	Y-to-D Change	Y-to-Y Change
Private Educational & Health Services	479.2	484.4	492.6	491.6	-1.0	7.2	12.4
.....Private Educational Services	66.1	66.4	66.9	64.7	-2.2	-1.7	-1.4
.....Health Care & Social Assistance	413.1	418.0	425.7	426.9	1.2	8.9	13.8
Manufacturing	541.9	544.3	538.6	534.6	-4.0	-9.7	-7.3
Professional & Business Services	340.5	344.2	350.5	352.0	1.5	7.8	11.5
Financial Activities	138.7	138.4	139.9	140.8	0.9	2.4	2.1
Construction	143.4	147.0	151.2	152.5	1.3	5.5	9.1
Leisure and Hospitality	307.5	308.9	304.7	306.8	2.1	-2.1	-0.7
Trade, Transportation & Utilities	599.0	597.5	594.4	592.3	-2.1	-5.2	-6.7
.....Trade	442.8	440.2	436.2	435.1	-1.1	-5.1	-7.7
.....Transportation, Warehousing & Utilities	156.2	157.3	158.2	157.2	-1.0	-0.1	1.0
All Other	167.8	167.4	164.6	163.9	-0.7	-3.5	-3.9
Total Private	2,718.0	2,732.1	2,736.5	2,734.5	-2.0	2.4	16.5
Government (Includes Public Schools & Hospitals)	428.1	429.0	428.9	429.0	0.1	0.0	0.9
Total Nonfarm	3,146.1	3,161.1	3,165.4	3,163.5	-1.9	2.4	17.4
United States Total Private	127,366.0	127,790.0	129,175.0	129,306.0	131.0	1,516.0	1,940.0

- Leisure and Hospitality **gained 2,100** jobs over the month, Professional & Business Services gained 1,500 and Construction **gained 1,300**.
- Manufacturing **lost 4,000** jobs over the month.

Indiana Private Sector Employment Change From Peak and Trough

October 2019 estimates show Indiana has gained 410,300 private jobs since July 2009.

IN Statewide Estimates (seasonally adjusted) -- October 2019

Supersector	Private Empl. Peak Dec 2018	Private Empl. Trough July 2009	September 2019	October 2019	Month to Month Change	Change Since Peak	Change Since Trough	% Month to Month Change
Private Educational & Health Services	484.4	411.1	492.6	491.6	-1.0	7.2	80.5	-0.2%
.....Private Educational Services	66.4	63.3	66.9	64.7	-2.2	-1.7	1.4	-3.3%
.....Health Care & Social Assistance	418.0	347.8	425.7	426.9	1.2	8.9	79.1	0.3%
Manufacturing	544.3	426.7	538.6	534.6	-4.0	-9.7	107.9	-0.7%
Professional & Business Services	344.2	256.9	350.5	352.0	1.5	7.8	95.1	0.4%
Financial Activities	138.4	130.7	139.9	140.8	0.9	2.4	10.1	0.6%
Construction	147.0	117.4	151.2	152.5	1.3	5.5	35.1	0.9%
Leisure and Hospitality	308.9	276.8	304.7	306.8	2.1	-2.1	30.0	0.7%
Trade, Transportation & Utilities	597.5	546.0	594.4	592.3	-2.1	-5.2	46.3	-0.4%
.....Trade	440.2	421.5	436.2	435.1	-1.1	-5.1	13.6	-0.3%
.....Transportation, Warehousing & Utilities	157.3	124.5	158.2	157.2	-1.0	-0.1	32.7	-0.6%
All Other	167.4	158.6	164.6	163.9	-0.7	-3.5	5.3	-0.4%
Total Private	2,732.1	2,324.2	2,736.5	2,734.5	-2.0	2.4	410.3	-0.1%
Government (Includes Public Schools & Hospitals)	429.0	434.5	428.9	429.0	0.1	0.0	-5.5	0.0%
Total Nonfarm	3,161.1	2,758.7	3,165.4	3,163.5	-1.9	2.4	404.8	-0.1%
United States Total Private	127,790.0	108,164.0	129,175.0	129,306.0	131.0	1,516.0	21,142.0	0.1%

- Manufacturing has accounted for 107,900 of this **increase** of jobs.
- Professional & Business Services **increased** by 95,100 jobs over this time frame.

For historical data, [visit this link](#).

Indiana Private Sector Employment Change Compared to U.S.

October 2019 Indiana private sector was down -0.1% and the U.S. grew by 0.1%.

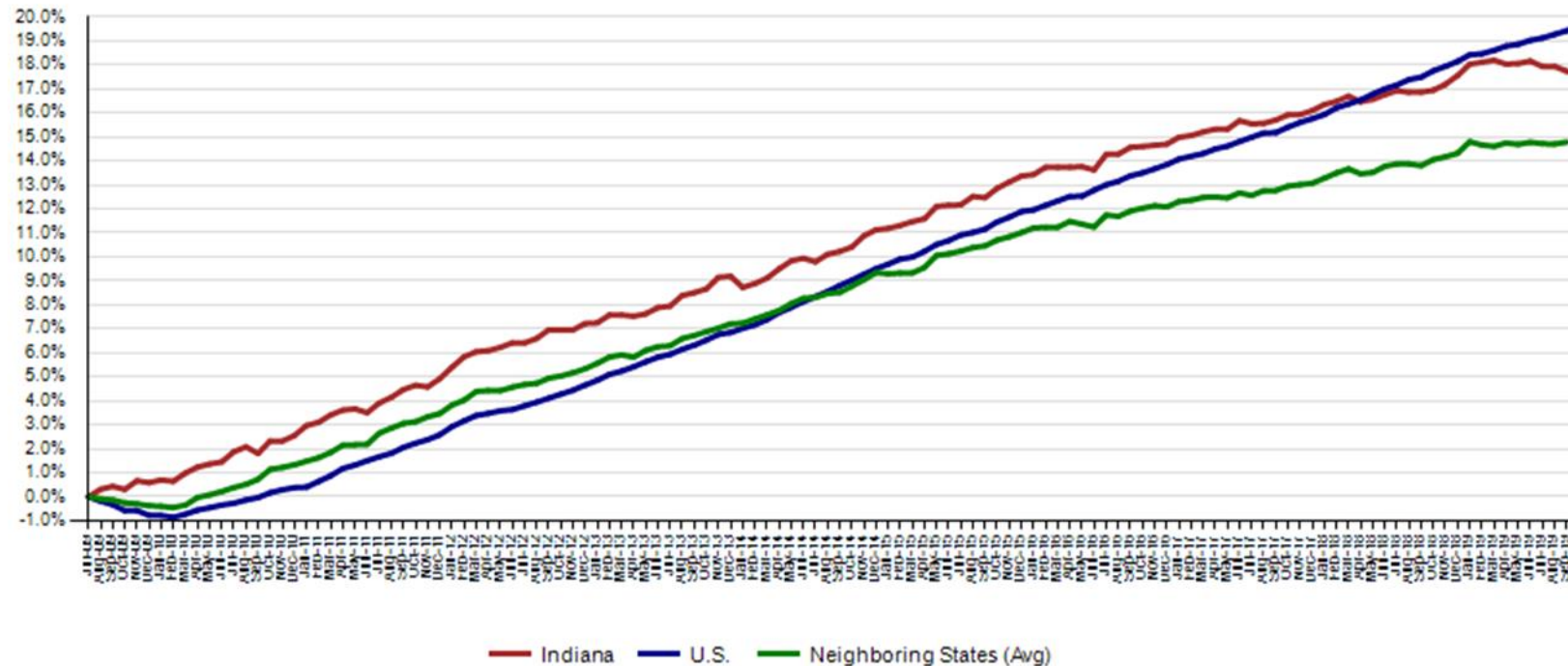
IN Employment Change Compared to the U.S.

Industry	Indiana Month to Month	U.S. Month to Month	Indiana vs U.S. Change	Indiana Year-to-Date	U.S. Year-to-Date	Indiana vs U.S. Change	Indiana Year-to-Year	U.S. Year-to-Year	Indiana vs U.S. Change
Private Educational & Health Services	-0.2%	0.2%	UNDER	1.5%	2.3%	UNDER	2.6%	2.7%	UNDER
.....Private Educational Services	-3.3%	0.1%	UNDER	-2.6%	2.4%	UNDER	-2.1%	2.5%	UNDER
.....Health Care & Social Assistance	0.3%	0.2%	OVER	2.1%	2.2%	UNDER	3.3%	2.7%	OVER
Manufacturing	-0.7%	-0.3%	UNDER	-1.8%	0.0%	UNDER	-1.3%	0.4%	UNDER
Professional & Business Services	0.4%	0.1%	OVER	2.3%	1.6%	OVER	3.4%	1.9%	OVER
Financial Activities	0.6%	0.2%	OVER	1.7%	1.2%	OVER	1.5%	1.3%	OVER
Construction	0.9%	0.1%	OVER	3.7%	1.7%	OVER	6.3%	2.0%	OVER
Leisure and Hospitality	0.7%	0.4%	OVER	-0.7%	1.8%	UNDER	-0.2%	2.4%	UNDER
Trade, Transportation & Utilities	-0.4%	0.1%	UNDER	-0.9%	0.2%	UNDER	-1.1%	0.5%	UNDER
.....Trade	-0.3%	0.1%	UNDER	-1.2%	0.0%	UNDER	-1.7%	0.3%	UNDER
.....Transportation, Warehousing & Utils	-0.6%	0.1%	UNDER	-0.1%	0.9%	UNDER	0.6%	1.3%	UNDER
All Other	-0.4%	-0.1%	UNDER	-2.1%	0.6%	UNDER	-2.3%	0.7%	UNDER
Total Private	-0.1%	0.1%	UNDER	0.1%	1.2%	UNDER	0.6%	1.5%	UNDER
Government (Includes Public Schools & Hospitals)	0.0%	0.0%	OVER	0.0%	0.7%	UNDER	0.2%	0.7%	UNDER
Total Nonfarm	-0.1%	0.1%	UNDER	0.1%	1.1%	UNDER	0.6%	1.4%	UNDER

Indiana Private Sector Employment Growth Since September 2009

Indiana is trailing the U.S. in private job growth since July 2009. The U.S. has grown by 19.5% while Indiana has grown by 17.7%.

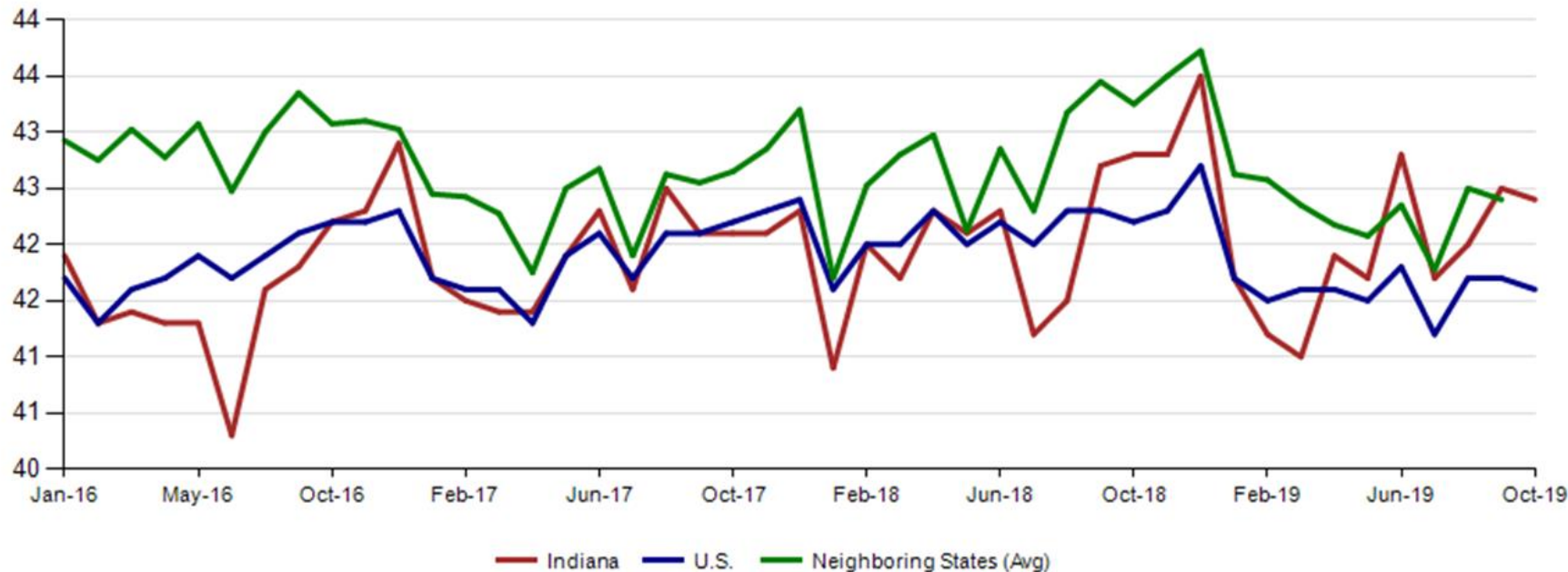
Private Sector Job Growth Since the Low Point of Employment in Indiana



Avg. Weekly Manufacturing Production Hours

October 2019 average weekly hours for Indiana manufacturing production hours decreased by 0.1 of an hour to 42.4 hours. National manufacturing decreased by 0.1 to 41.6 weekly hours, and Midwest states increased 0.2 to 41.2 hours per week (September 2019 data).

Avg. Weekly Manufacturing Production Hours (non seasonally adjusted)



LAUS Monthly Labor Force Report

INDIANA
DEPARTMENT OF
WORKFORCE
DEVELOPMENT

MONTHLY
BRIEFING

Current Employment Statistics (CES) and Local Area Unemployment Statistics (LAUS)

Jobs Data for October 2019

Month NSA	Labor Force	Employed	Unemployed	IN Rate	Total NonFarm	Total Private	Regular UI Claims
Dec-16	3,289,568	3,161,214	128,354	3.9	3,118,600	2,681,200	24,599
Oct-19	3,378,649	3,277,266	101,383	3.0	3,194,100	2,752,800	13,968
Change	89,081	116,052	(26,971)	(0.9)	75,500	71,600	(10,631)

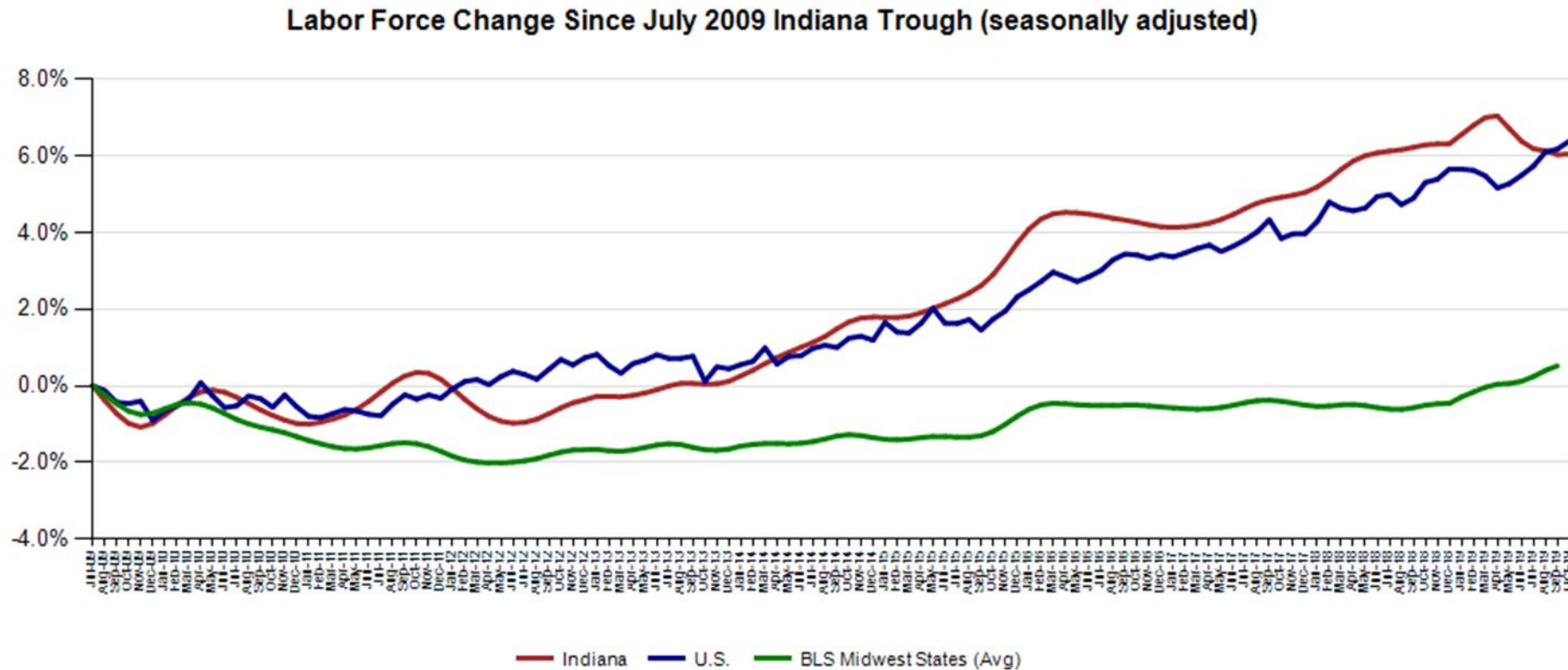
Month SA	Labor Force	Employed	Unemployed	IN Rate	Total NonFarm	Total Private	Regular UI Claims
Dec-16	3,323,233	3,190,341	132,892	4.0	3,092,100	2,665,800	24,599
Oct-19	3,383,852	3,275,812	108,040	3.2	3,163,500	2,734,500	13,968
Change	60,619	85,471	(24,852)	(0.8)	71,400	68,700	(10,631)



Indiana Labor Force Pct. Growth Since July '09 Indiana Trough

October 2019 Indiana Seasonally Adjusted Labor Force stands at 3,383,852.

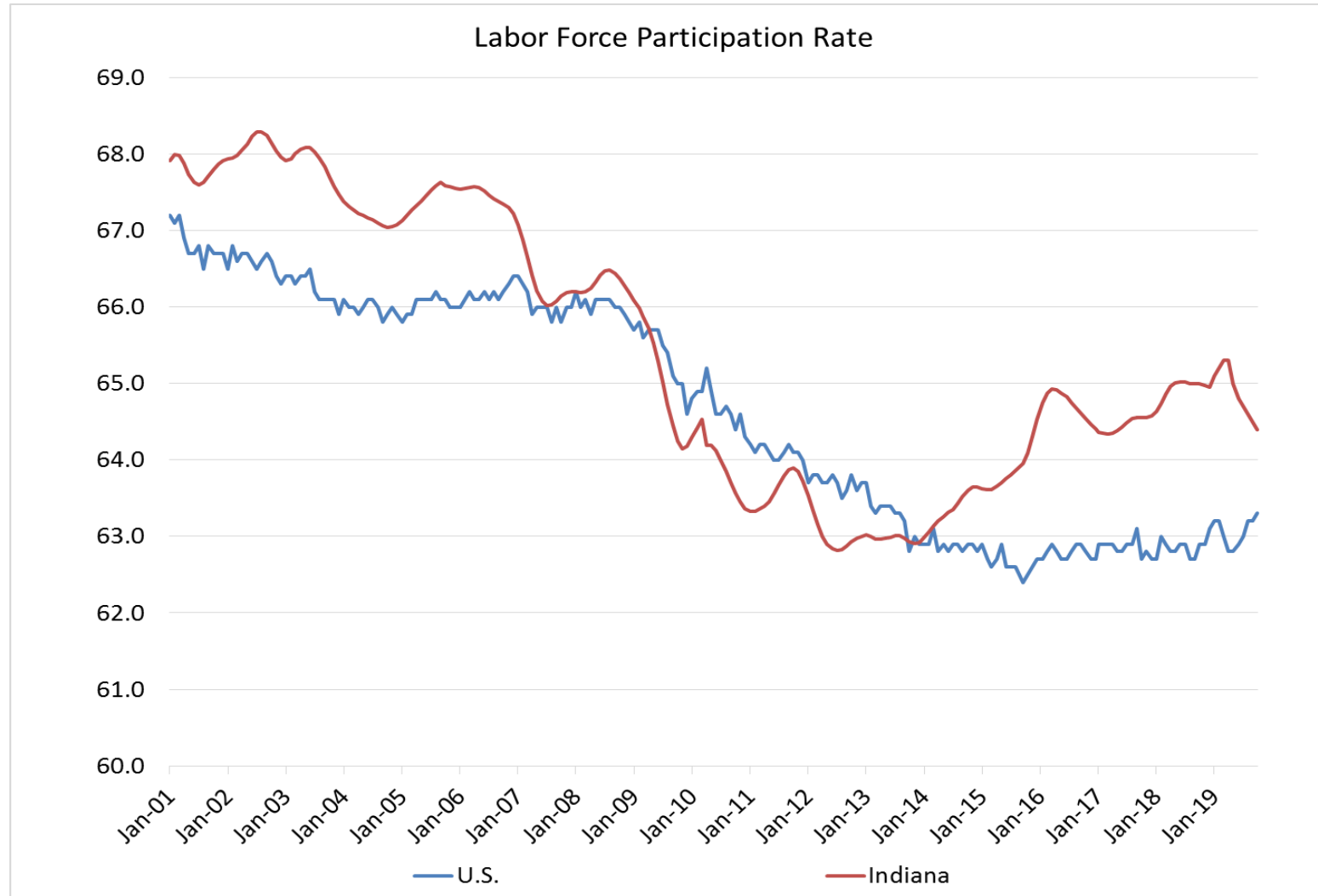
- Employed labor force **increased 1,964** over the month
- Unemployment **decreased** by 1,397 over the month



Source: Current Employment Statistics (seasonally adjusted)

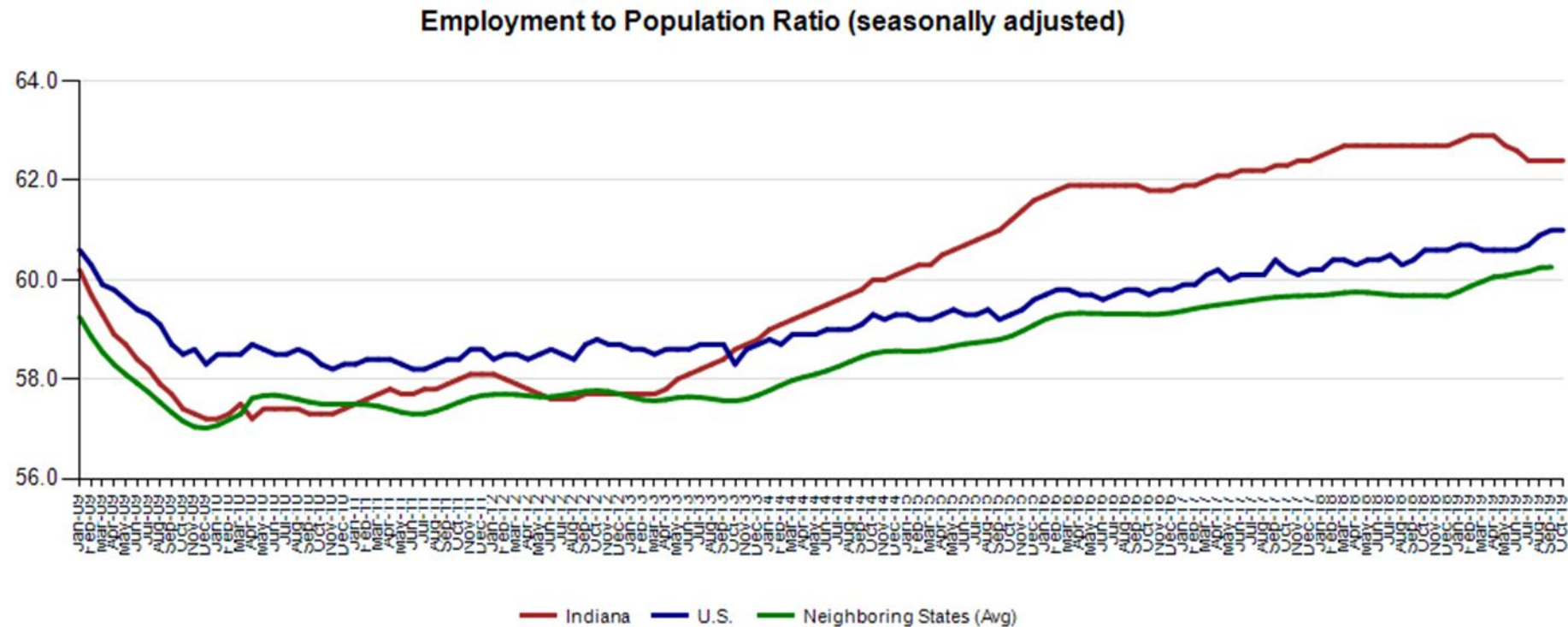
Indiana Labor Force Participation Rate Compared to U.S.

Indiana is at 64.4% compared to U.S. at 63.3%



Employment to Population Ratio (seasonally adjusted)

The Indiana Employment to Population Ratio for October 2019 is 62.4% compared to the U.S. at 61.0% and border states at 60.3% (August)



Alternative Measures of Labor Underutilization

3rd Quarter 2018 through 2nd Quarter 2019 Averages

State	U-1	U-2	U-3	U-4	U-5	U-6
Illinois	1.6	2.1	4.2	4.4	5.0	7.9
Indiana	1.0	1.9	3.6	3.8	4.4	6.7
Kentucky	1.4	1.7	4.3	4.7	5.6	8.2
Michigan	1.4	1.8	4.1	4.4	4.8	7.6
Minnesota	0.8	1.8	3.1	3.2	3.7	5.6
Ohio	1.2	1.9	4.1	4.3	5.0	7.9
Wisconsin	0.9	1.6	3.1	3.2	3.7	5.7
United States	1.4	1.8	3.8	4.0	4.7	7.4

The six state measures are based on the same definitions as those published for the U.S.:

- U-1, persons unemployed 15 weeks or longer, as a percent of the civilian labor force;
- U-2, job losers and persons who completed temporary jobs, as a percent of the civilian labor force;
- U-3, total unemployed, as a percent of the civilian labor force (this is the definition used for the official unemployment rate);
- U-4, total unemployed plus discouraged workers, as a percent of the civilian labor force plus discouraged workers;
- U-5, total unemployed, plus discouraged workers, plus all other marginally attached workers, as a percent of the civilian labor force plus all marginally attached workers; and
- U-6, total unemployed, plus all marginally attached workers, plus total employed part time for economic reasons, as a percent of the civilian labor force plus all marginally attached workers.



Midwest Comparison Rates: Seasonally Adjusted Over the Year and Over the Month

	Oct-18	Sep-19	Oct-19	Monthly change	Yearly change
Indiana	3.5%	3.2%	3.2%	0.0%	-0.3%
U.S.	3.8%	3.5%	3.6%	0.0%	-0.2%
Illinois	4.2%	3.9%	3.9%	0.0%	-0.3%
Kentucky	4.3%	4.4%	4.3%	-0.1%	0.0%
Michigan	4.0%	4.2%	4.1%	-0.1%	0.1%
Minnesota	2.8%	3.2%	3.2%	0.0%	0.4%
Ohio	4.6%	4.2%	4.2%	0.0%	-0.4%
Wisconsin	3.0%	3.2%	3.3%	0.1%	0.3%

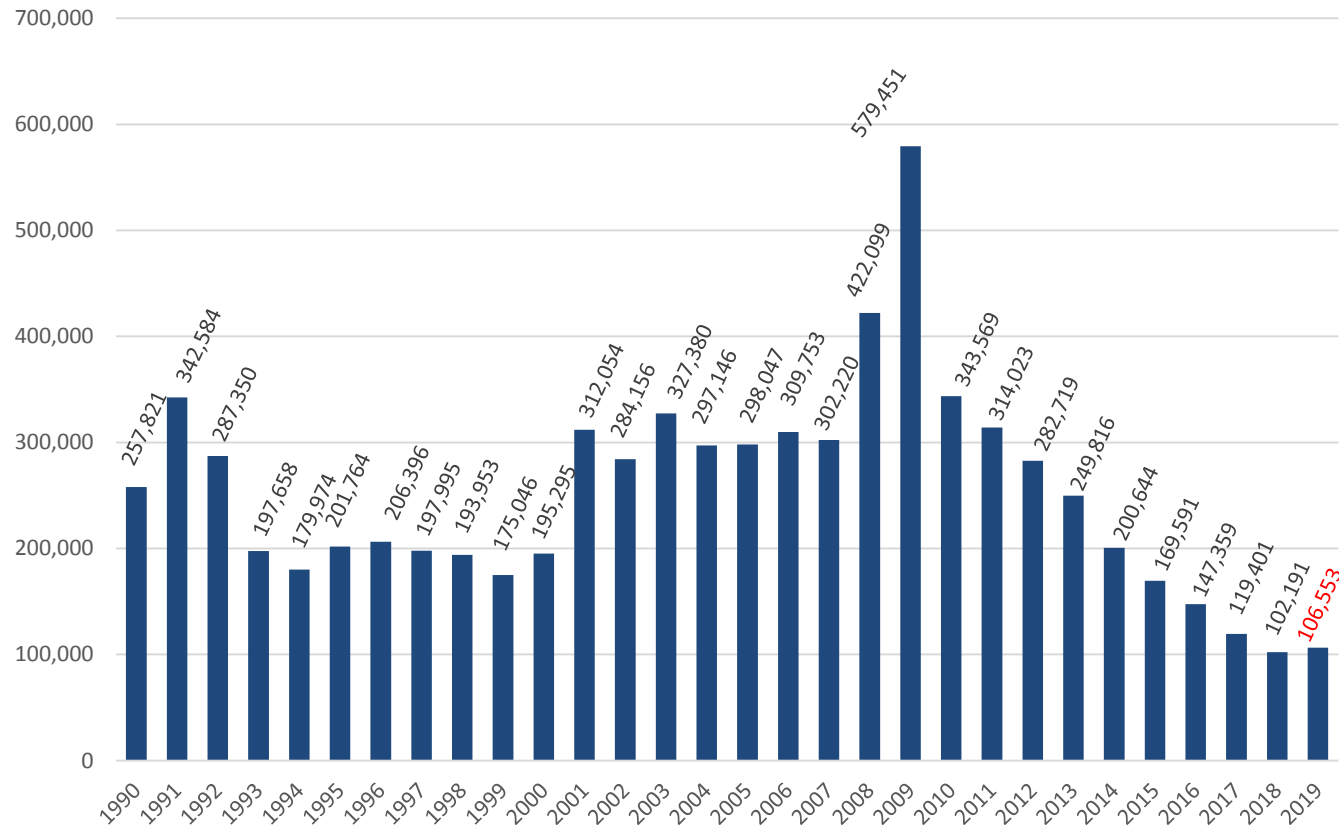
*2018 Benchmark

Confidential & Deliberative



Weekly Initial Claims – Week 43

Total aggregated UI claims for the first 43 weeks of each year as reported to ETA.



Regular UI Claims

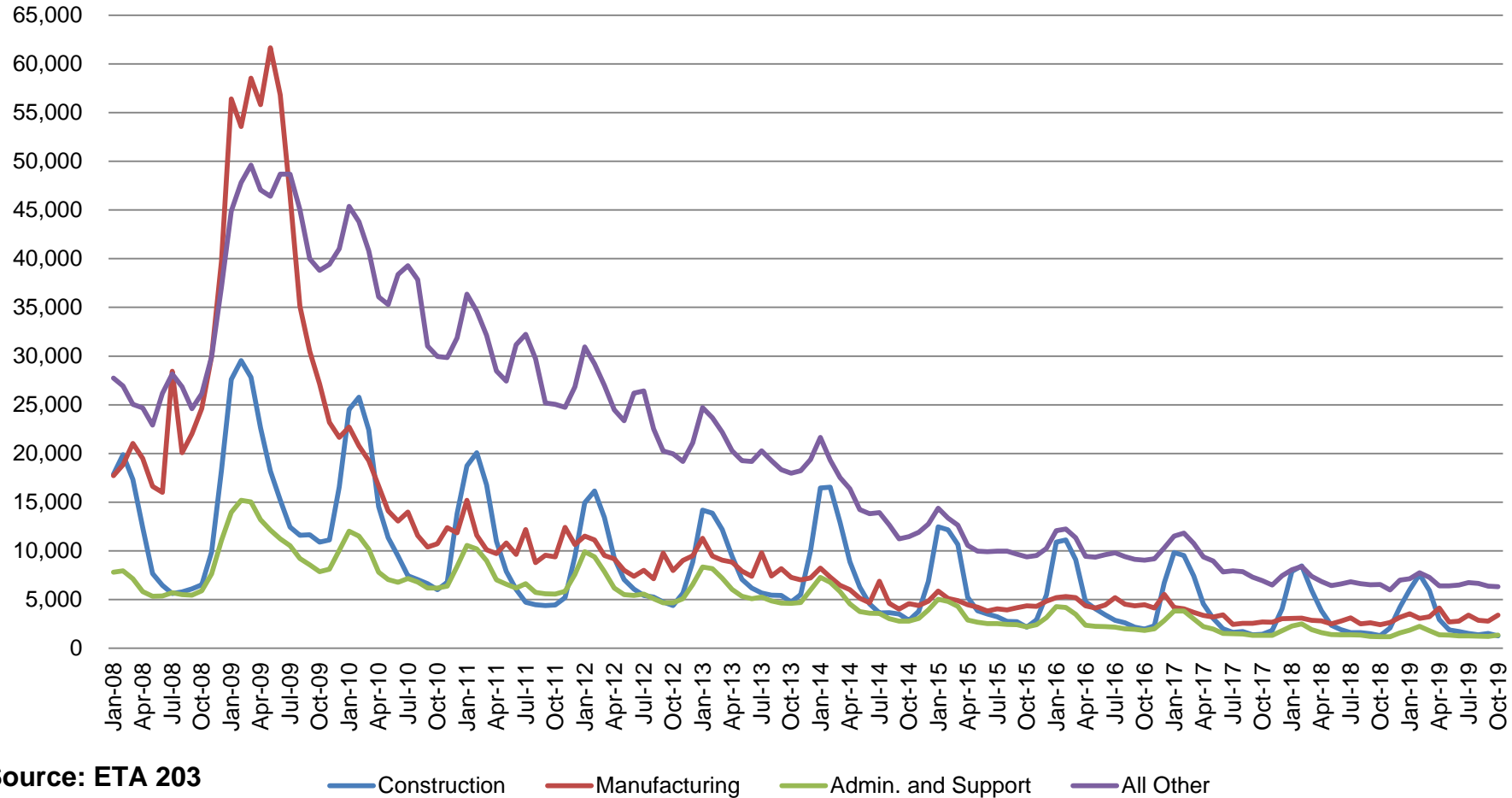
*Reference Week (12th of the month) Input to LAUS Unemployment Rate Model
Declines over the month - and over the year*

	2009	2013	2014	2015	2016	2017	2018	2019	OTM Change	OTY Change
JANUARY	150,888	63,223	49,377	41,333	36,555	33,137	24,968	21,808	5,115	(3,160)
FEBRUARY	154,388	60,183	52,316	39,282	36,909	32,463	25,879	23,992	2,184	(1,887)
MARCH	157,257	54,578	45,928	35,755	32,439	32,141	21,171	22,446	(1,546)	1,275
APRIL	143,842	48,548	39,717	25,597	23,895	21,998	17,618	17,914	(4,532)	296
MAY	141,174	42,997	32,460	22,807	22,300	19,431	14,774	14,411	(3,503)	(363)
JUNE	136,670	41,722	29,524	22,030	22,025	16,722	14,653	14,386	(25)	(267)
JULY	121,336	44,597	30,845	22,341	22,326	15,775	15,098	15,054	668	(44)
AUGUST	103,509	39,998	26,061	21,472	20,737	15,692	13,959	14,156	(898)	197
SEPTEMBER	92,680	39,563	23,685	20,941	19,372	14,334	12,981	13,620	(536)	639
OCTOBER	86,275	37,778	23,768	19,917	19,143	14,266	13,083	13,968	348	885
NOVEMBER	82,451	38,517	25,315	21,199	19,547	14,347	15,499			
DECEMBER	91,814	42,484	30,982	26,249	24,599	17,345	16,693			

**Without earnings – Reference week claims*

Regular UI Claims by Industry

For the Reference Week of Each Month



Indiana: Not in the Labor Force by Gender and Age

November 2018 – October 2019

Current Population Survey, Bureau of Labor Statistics (in 1000s)

	Total	Age			Sex	
		16 to 24 years	25 to 54 years	55 years and over	Men	Women
	Indiana					
Total not in the labor force	1,850.0	289.7	434.9	1,125.5	735.5	1,114.5
Do not want a job now	1,743.8	254.8	400.0	1,089.0	682.4	1,061.4
Want a job	106.2	34.8	34.9	36.5	53.1	53.0
Did not search for work in previous year	70.9	21.5	20.6	28.9	35.1	35.9
Searched for work in previous year	35.2	13.4	14.3	7.6	18.1	17.2
Not available to work now	6.2	3.4	2.3	0.5	3.3	2.9
Available to work now	29.0	10.0	12.0	7.0	14.7	14.2
Reason not currently looking:						
Discouragement over job prospects	6.9	1.9	2.7	2.4	4.9	2.1
Reasons other than discouragement	22.0	8.1	9.2	4.7	9.9	12.2

- Data not available

Source: Table b. Civilians not in the labor force by sex and age, November 2018 - October 2019 (based on CPS)
(Numbers in thousands)

Indiana: Labor Force by Education Attainment

November 2018 – October 2019

Current Population Survey, Bureau of Labor Statistics (in 1000s)

	Civilian noninstitutional population	Civilian Labor Force		Employment		Unemployment	
		Total	Rate	Total	Rate	Total	Rate
	Indiana						
Less than a High school diploma	348.8	154.1	44.2	148.2	42.5	5.9	3.8
High school graduates, no college ¹	1,549.2	909.1	58.7	879.5	56.8	29.6	3.3
Some college or associate degree	1,203.2	843.1	70.1	815.0	67.7	28.1	3.3
Bachelor's degree and higher ²	1,340.6	1,006.2	75.1	987.3	73.6	18.9	1.9

- Data not available

¹ Includes persons with a high school diploma or equivalent

² Includes person with bachelor's, master's, professional and doctoral degrees

Source: Table f. Employment status of the civilian non-institutional population 25 years and over by educational attainment, November 2018 - October 2019 (based on CPS) (Numbers in thousands)

Indiana: Labor Force by Gender and Age

	Civilian labor force participation rate	Unemployment rate
Both Sexes		
All Races		
Age 16+	64.7	3.4
Age 16-19	44.5	12.7
Age 20+	66.1	3.0
White		
Age 16+	64.7	3.0
Age 16-19	48.0	10.1
Age 20+	65.8	2.7
Black		
Age 16+	64.2	6.7
Age 16-19	32.5	32.1
Age 20+	67.0	5.6
Hispanic		
Age 16+	71.1	3.9
Age 16-19	47.4	13.0
Age 20+	73.4	3.3
Male, All Races		
Age 16+	71.1	3.6
Age 20+	72.9	3.1
Female, All Races		
Age 16+	58.6	3.3
Age 20+	59.8	2.9
Male, White		
Age 16+	71.2	3.1
Age 20+	72.6	2.7
Female, White		
Age 16+	58.5	2.9
Age 20+	59.3	2.6
Male, Black		
Age 16+	66.7	7.7
Age 20+	70.0	5.9
Female, Black		
Age 16+	61.9	5.7
Age 20+	64.4	5.3

*November 2018 – October 2019
Current Population Survey, Bureau
of Labor Statistics (in 1000s)*

Source: Table a. Employment status of the civilian non-institutional population by sex, age, race, and Hispanic origin, November 2018 - October 2019 (based on CPS) (Numbers in thousands)

Indiana: Labor Force by Gender and Age

November 2018 – October 2019

Current Population Survey, Bureau of Labor Statistics (in 1000s)

	Civilian labor force participation rate	Unemployment rate
Male, All Races		
Age 16-19	47.6	14.1
Age 20-24	83.1	6.0
Age 25-34	90.0	3.6
Age 35-44	92.1	2.5
Age 45-54	88.8	2.7
Age 55-64	70.4	2.2
Age 65+	23.1	2.2
Female, All Races		
Age 16-19	41.3	11.0
Age 20-24	75.7	4.4
Age 25-34	74.0	3.1
Age 35-44	75.2	3.3
Age 45-54	77.2	2.5
Age 55-64	61.5	1.6
Age 65+	16.7	3.1

Source: Table a. Employment status of the civilian non-institutional population by sex, age, race, and Hispanic origin, November 2018 - October 2019 (based on CPS)
(Numbers in thousands)



Indiana: Duration of Unemployment Part 1

November 2018 – October 2019

Current Population Survey, Bureau of Labor Statistics (in 1000s)

	Total	5 to 14 weeks	15 weeks and over					Median duration (Average of monthly median duration)	Mean duration
			Total	15 to 26 weeks	27 weeks and over				
					Total	27 to 51 weeks	52 weeks and over		
Indiana									
Both Sexes									
All Races	116.4	39.0	30.7	13.5	17.2	8.3	8.8	7.7	16.1
White	87.8	27.0	23.9	10.6	13.3	6.3	7.0	7.5	16.1
Black	21.2	9.5	4.1	2.3	1.8	1.4	0.3	6.1	10.5
Hispanic	11.2	3.1	2.8	1.0	1.8	-	1.8	12.1	17.0
Age 16-19	20.3	7.1	3.0	2.1	0.9	0.7	0.2	5.5	8.6
Age 20+	96.2	32.0	27.6	11.4	16.2	7.6	8.6	8.1	17.7
Male, 16+	64.8	24.9	17.9	7.8	10.1	4.8	5.4	8.6	16.7
Female, 16+	51.6	14.2	12.8	5.8	7.0	3.6	3.5	6.0	15.2

- Data not available

Source: Table d. Unemployed persons by sex, age, race, Hispanic origin, and duration of unemployment, November 2018 - October 2019 (based on CPS) (Numbers in thousands)

Indiana: Duration of Unemployment Part 2

November 2018 – October 2019

Current Population Survey, Bureau of Labor Statistics (in 1000s)

	Duration of unemployment							Aggregate weeks of unemployment
	Less than 5 weeks	5-6	7-10	11-14	15-26	27-51	52+	
Indiana								
Both Sexes								
All Races	46.7	8.0	17.5	13.5	13.5	8.3	8.8	1,871.9
White	37.0	6.3	12.3	8.3	10.6	6.3	7.0	1,415.8
Black	7.6	1.4	4.2	4.0	2.3	1.4	0.3	221.4
Hispanic	5.3	0.5	1.6	1.0	1.0	-	1.8	190.1
Age 16-19	10.2	1.0	3.6	2.5	2.1	0.7	0.2	174.5
Age 20+	36.5	7.1	14.0	11.0	11.4	7.6	8.6	1,697.4
Male, 16+	22.0	4.6	11.3	9.0	7.8	4.8	5.4	1,085.4
Female, 16+	24.6	3.4	6.3	4.5	5.8	3.6	3.5	786.5

- Data not available

Source: Table d. Unemployed persons by sex, age, race, Hispanic origin, and duration of unemployment, November 2018 - October 2019 (based on CPS) (Numbers in thousands)

Purchasing Managers' Index (PMI)

- The Purchasing Managers Index (PMI) is a measure of the prevailing direction of economic trends in manufacturing.
- The PMI is based on a monthly survey of supply chain managers across 19 industries, covering both upstream and downstream activity.
- The value and movements in the PMI and its components can provide useful insight to business decision makers, market analysts, and investors, and is a leading indicator of overall economic activity in the U.S.



PMI is a number from 0 to 100. A PMI above 50 represents an expansion when compared with the previous month. A PMI reading under 50 represents a contraction.

Manufacturing at a Glance October 2019						
Index	Series Index Oct	Series Index Sep	Oct- 19	Direction	Rate of Change	Trend* (Months)
PMI®	48.3	47.8	0.5	Contracting	Slower	3
New Orders	49.1	47.3	1.8	Contracting	Slower	3
Production	46.2	47.3	-1.1	Contracting	Faster	3
Employment	47.7	46.3	1.4	Contracting	Slower	3
Supplier Deliveries	49.5	51.1	-1.6	Faster	From Slowing	1
Inventories	48.9	46.9	2	Contracting	Slower	5
Customers' Inventories	47.8	45.5	2.3	Too Low	Slower	37
Prices	45.5	49.7	-4.2	Decreasing	Faster	5
Backlog of Orders	44.1	45.1	-1	Contracting	Faster	6
New Export Orders	50.4	41	9.4	Growing	From Contracting	1
Imports	45.3	48.1	-2.8	Contracting	Faster	4
OVERALL ECONOMY				Growing	Faster	126
Manufacturing Sector				Contracting	Slower	3

