

06/19/2019

Indiana's Employment and Labor Force Estimates

May 2019

INDIANA
DEPARTMENT OF
WORKFORCE
DEVELOPMENT

Key Points: May 2019

Unemployment Rate

- Indiana = 3.6%
- U.S. = 3.6%

Indiana's rate has increased 0.1 percentage points over the year from May 2018.

Indiana's Labor Force

- Over the month Labor Force decreased 10,677 due to a decrease in employment of 8,365 and a decrease in unemployment of 2,312.
- Over the year, increased by 22,432
- Indiana's labor force participation rate fell by 0.3% over the month to be 65.0%. This remains above the U.S. labor force participation rate of 62.8%.

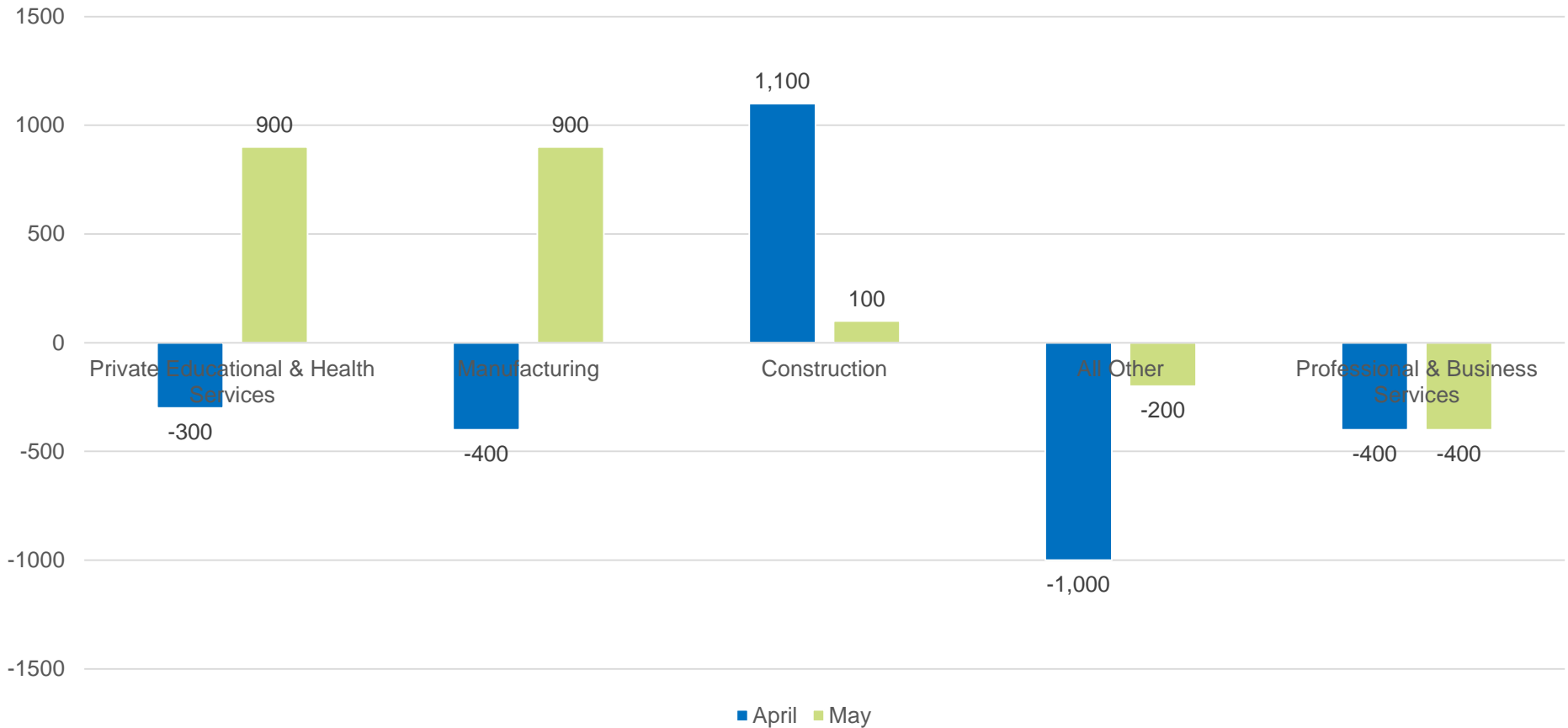
For historical labor force participation data, [visit this link](#).



Key Points: May 2019

Indiana's Private Employment

- Decreased by 1,200 over the month and had gains of 32,900 over the year.
- May private employment = 2,742,100



Revisions to April 2019 Estimates

Revisions to April 2019 Estimates						
INDUSTRY TITLE	Mar	Apr Prel	Apr Rev	Revision	Chg from Mar	Pre Chg from Mar
Total Nonfarm	3176.8	3173.3	3172.8	-0.5	-4.0	-3.5
Total Private	2747.1	2743.5	2743.3	-0.2	-3.8	-3.6
Goods Producing	698.3	699.0	699.0	0.0	0.7	0.7
Service-Providing	2478.5	2474.3	2473.8	-0.5	-4.7	-4.2
Private Service Providing	2048.8	2044.5	2044.3	-0.2	-4.5	-4.3
Construction	148.4	149.5	149.4	-0.1	1.0	1.1
Manufacturing	543.6	543.2	543.4	0.2	-0.2	-0.4
Trade, Transportation, and Utilities	599.5	595.9	596.6	0.7	-2.9	-3.6
Wholesale Trade	121.1	121.0	121.0	0.0	-0.1	-0.1
Retail Trade	318.9	317.3	317.3	0.0	-1.6	-1.6
Transportation, Warehousing, and Utilities	159.5	157.6	158.3	0.7	-1.2	-1.9
Information	28.6	28.1	28.1	0.0	-0.5	-0.5
Financial Activities	138.1	137.5	137.3	-0.2	-0.8	-0.6
Finance and Insurance	103.2	102.7	102.5	-0.2	-0.7	-0.5
Real Estate and Rental and Leasing	34.9	34.8	34.8	0.0	-0.1	-0.1
Professional and Business Services	350.6	350.2	349.8	-0.4	-0.8	-0.4
Professional, Scientific, and Technical Services	125.1	126.0	125.5	-0.5	0.4	0.9
Management of Companies and Enterprises	34.4	34.4	34.0	-0.4	-0.4	0.0
Admin & Support & Waste Mgmt & Remediation Services	191.1	189.8	190.3	0.5	-0.8	-1.3
Education and Health Services	487.8	487.5	487.6	0.1	-0.2	-0.3
Educational Services	67.7	68.2	68.1	-0.1	0.4	0.5
Health Care and Social Assistance	420.1	419.3	419.5	0.2	-0.6	-0.8
Leisure and Hospitality	311.6	313.2	312.6	-0.6	1.0	1.6
Other Services	132.6	132.1	132.3	0.2	-0.3	-0.5
Government	429.7	429.8	429.5	-0.3	-0.2	0.1



Midwestern Sector Employment Change Compared to Indiana

Percentage growth ranking comparison of Midwestern States and selected industry sectors since the Indiana low point. (April data)

Feb	TNF	Private	Construction	Manufacturing	Professional & Technical Services	Education and Health Services
Illinois	30	30	37	32	28	34
Indiana	18	19	15	4	9	27
Kentucky	25	24	35	8	22	38
Michigan	16	17	11	2	15	47
Minnesota	22	23	10	25	37	25
Ohio	26	26	20	17	38	36
Wisconsin	34	32	23	21	24	40

- Indiana Manufacturing sector growth **exceeded** the other Midwestern states since July 2009 . Three Midwestern States were among the top 10 in manufacturing growth over this time.

Comparing Local Area Unemployment Statistics (LAUS) and Current Employment Statistics (CES)

LAUS (Labor Force by Residence)

This counts people, not jobs, and is...

- An estimate of employment based on where the employee lives, rather than where they work
- Used in calculating the labor force

CES (Employment by Job)

This counts jobs, not people, and is...

- An estimate of employment based on the location of the job regardless of the worker's residence
- Also called nonag wage and salary or nonfarm employment
- Used in Quarterly Census of Employment and Wages (QCEW), Occupational Employment Statistics (OES) and CES data

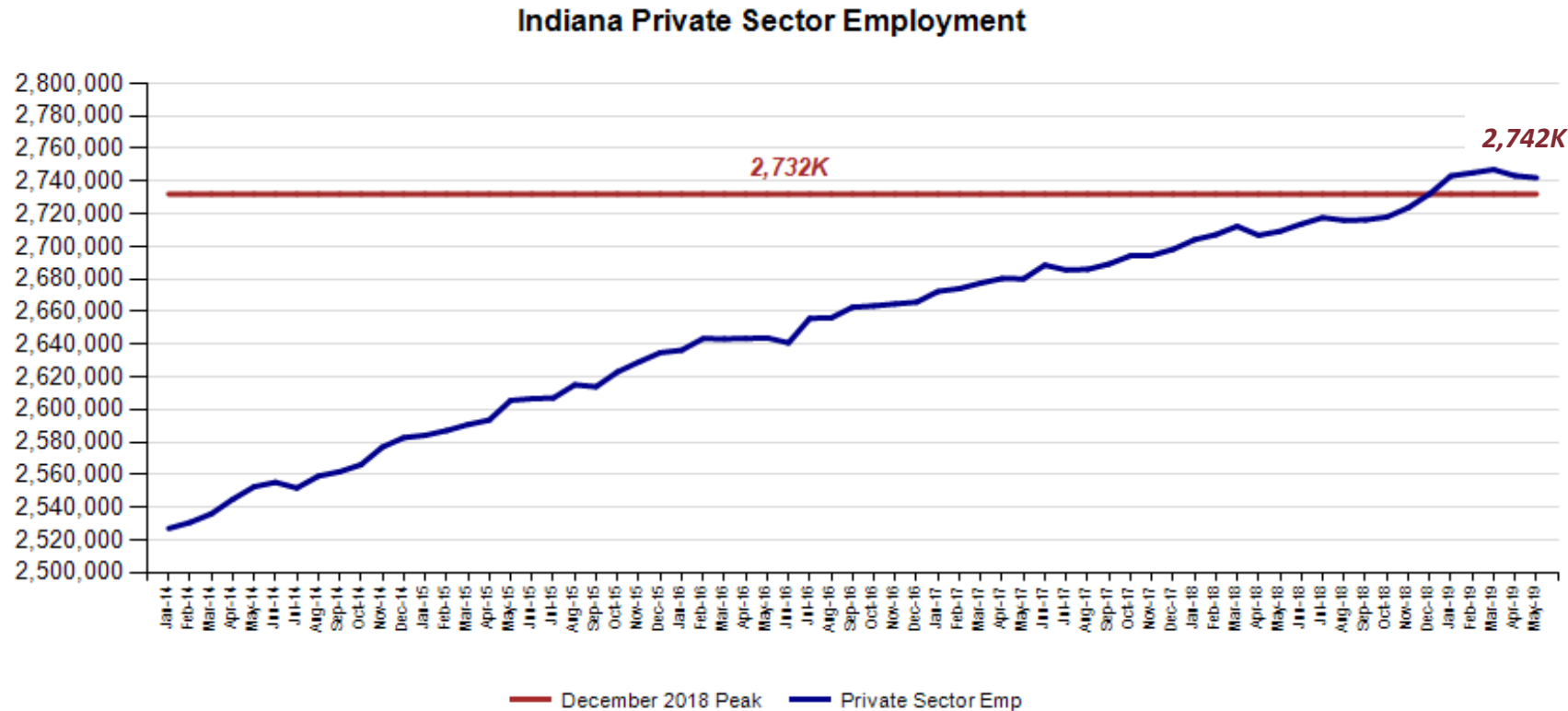
CES Monthly Jobs Report

INDIANA
DEPARTMENT OF
WORKFORCE
DEVELOPMENT

MONTHLY
BRIEFING

Indiana Private Sector Employment

May total private employment is 10,000 above the December 2018 peak.



Indiana Private Sector Employment Change

May 2019 decreased by 1,200 jobs over the month and is up 32,900 over the year.

IN Employment Change Over the Month, Year-to-Date and Over the Year (seasonally adjusted)

Industry	May 2018	December 2018	April 2019	May 2019	Month Change	Y-to-D Change	Y-to-Y Change
Private Educational & Health Services	472.6	484.4	487.6	488.5	0.9	4.1	15.9
.....Private Educational Services	63.3	66.4	68.1	68.2	0.1	1.8	4.9
.....Health Care & Social Assistance	409.3	418.0	419.5	420.3	0.8	2.3	11.0
Manufacturing	541.3	544.3	543.4	544.3	0.9	0.0	3.0
Professional & Business Services	342.6	344.2	349.8	349.4	-0.4	5.2	6.8
Financial Activities	139.1	138.4	137.3	136.4	-0.9	-2.0	-2.7
Construction	139.4	147.0	149.4	149.5	0.1	2.5	10.1
Leisure and Hospitality	309.7	308.9	312.6	311.6	-1.0	2.7	1.9
Trade, Transportation & Utilities	597.1	597.5	596.6	596.0	-0.6	-1.5	-1.1
.....Trade	441.8	440.2	438.3	437.7	-0.6	-2.5	-4.1
.....Transportation, Warehousing & Utilities	155.3	157.3	158.3	158.3	0.0	1.0	3.0
All Other	167.4	167.4	166.6	166.4	-0.2	-1.0	-1.0
Total Private	2,709.2	2,732.1	2,743.3	2,742.1	-1.2	10.0	32.9
Government (Includes Public Schools & Hospitals)	433.4	429.0	429.5	424.9	-4.6	-4.1	-8.5
Total Nonfarm	3,142.6	3,161.1	3,172.8	3,167.0	-5.8	5.9	24.4
United States Total Private	126,318.0	127,790.0	128,491.0	128,581.0	90.0	791.0	2,263.0

Source: Current Employment Statistics (seasonally adjusted)

- Private Educational & Health Services **gained** 900 jobs over the month and Manufacturing **gained** 900.
- Financial Activities **lost** 900 jobs over the month.

For month to month change, [visit this link.](#)

Indiana Private Sector Employment Change From Peak and Trough

May 2019 estimates show Indiana has gained 417,900 jobs since July 2009.

Supersector	Private Empl. Peak Dec 2018	Private Empl. Trough July 2009	April 2019	May 2019	Month to Month Change	Change Since Peak	Change Since Trough	% Month to Month Change
Private Educational & Health Services	484.4	411.1	487.6	488.5	0.9	4.1	77.4	0.2%
.....Private Educational Services	66.4	63.3	68.1	68.2	0.1	1.8	4.9	0.1%
.....Health Care & Social Assistance	418.0	347.8	419.5	420.3	0.8	2.3	72.5	0.2%
Manufacturing	544.3	426.7	543.4	544.3	0.9	0.0	117.6	0.2%
Professional & Business Services	344.2	256.9	349.8	349.4	-0.4	5.2	92.5	-0.1%
Financial Activities	138.4	130.7	137.3	136.4	-0.9	-2.0	5.7	-0.7%
Construction	147.0	117.4	149.4	149.5	0.1	2.5	32.1	0.1%
Leisure and Hospitality	308.9	276.8	312.6	311.6	-1.0	2.7	34.8	-0.3%
Trade, Transportation & Utilities	597.5	546.0	596.6	596.0	-0.6	-1.5	50.0	-0.1%
.....Trade	440.2	421.5	438.3	437.7	-0.6	-2.5	16.2	-0.1%
.....Transportation, Warehousing & Utilities	157.3	124.5	158.3	158.3	0.0	1.0	33.8	0.0%
All Other	167.4	158.6	166.6	166.4	-0.2	-1.0	7.8	-0.1%
Total Private	2,732.1	2,324.2	2,743.3	2,742.1	-1.2	10.0	417.9	0.0%
Government (Includes Public Schools & Hospitals)	429.0	434.5	429.5	424.9	-4.6	-4.1	-9.6	-1.1%
Total Nonfarm	3,161.1	2,758.7	3,172.8	3,167.0	-5.8	5.9	408.3	-0.2%
United States Total Private	127,790.0	108,164.0	128,491.0	128,581.0	90.0	791.0	20,417.0	0.1%

Source: Current Employment Statistics (seasonally adjusted)

- Manufacturing has accounted for 117,600 of this **increase** of jobs.
- Professional & Business Services **increased** by 92,500 jobs over this time frame.

For historical data, [visit this link](#).

Indiana Private Sector Employment Change Compared to U.S.

May 2019 Indiana private sector declined by less than 0.1% and the U.S. grew by 0.1%.

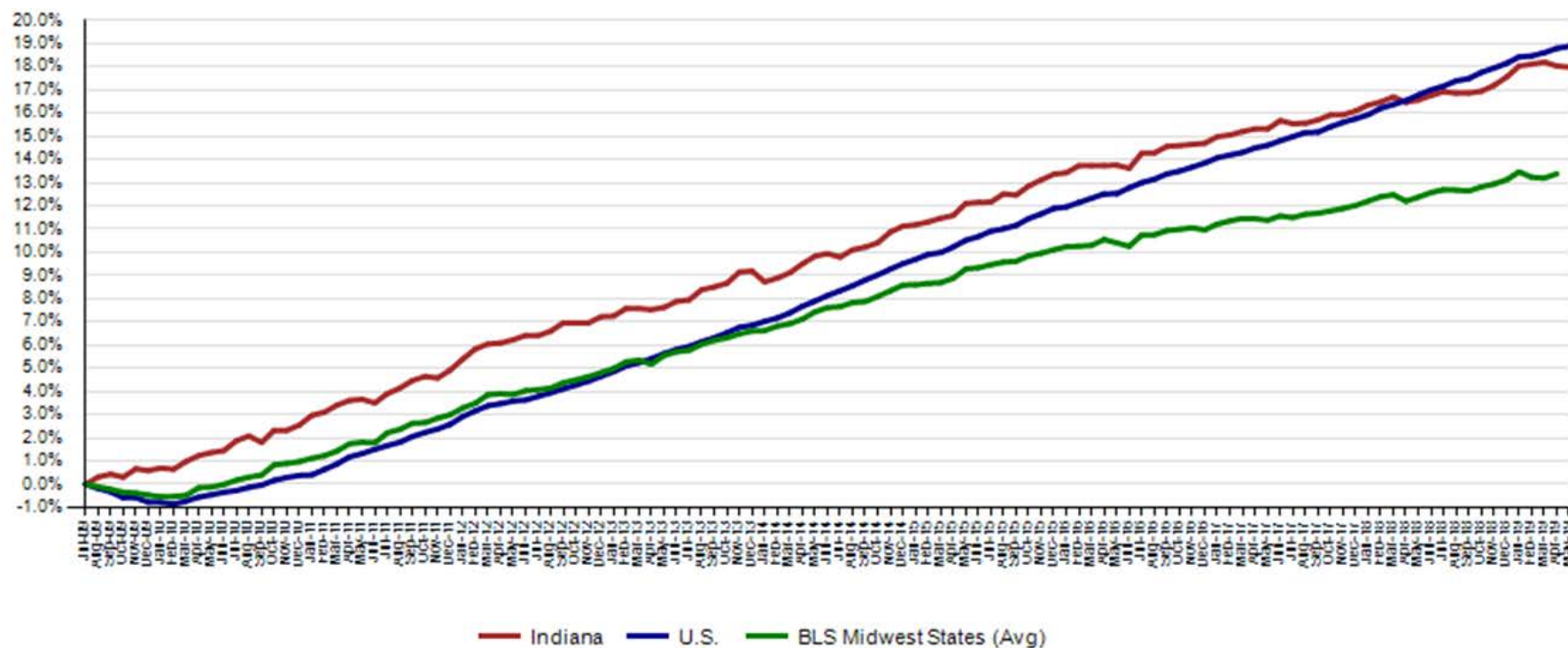
IN Employment Change Compared to the U.S.

Industry	Indiana Month to Month	U.S. Month to Month	Indiana vs U.S. Change	Indiana Year-to-Date	U.S. Year-to-Date	Indiana vs U.S. Change	Indiana Year-to-Year	U.S. Year-to-Year	Indiana vs U.S. Change
Private Educational & Health Services	0.2%	0.1%	OVER	0.8%	1.1%	UNDER	3.4%	2.5%	OVER
.....Private Educational Services	0.1%	0.1%	OVER	2.7%	0.9%	OVER	7.7%	2.0%	OVER
.....Health Care & Social Assistance	0.2%	0.1%	OVER	0.6%	1.1%	UNDER	2.7%	2.6%	OVER
Manufacturing	0.2%	0.0%	OVER	0.0%	0.2%	UNDER	0.6%	1.5%	UNDER
Professional & Business Services	-0.1%	0.2%	UNDER	1.5%	0.8%	OVER	2.0%	2.4%	UNDER
Financial Activities	-0.7%	0.0%	UNDER	-1.4%	0.4%	UNDER	-1.9%	1.1%	UNDER
Construction	0.1%	0.1%	OVER	1.7%	1.1%	OVER	7.2%	3.0%	OVER
Leisure and Hospitality	-0.3%	0.2%	UNDER	0.9%	1.0%	UNDER	0.6%	2.6%	UNDER
Trade, Transportation & Utilities	-0.1%	0.0%	UNDER	-0.3%	0.1%	UNDER	-0.2%	0.7%	UNDER
.....Trade	-0.1%	0.0%	UNDER	-0.6%	0.0%	UNDER	-0.9%	0.2%	UNDER
.....Transportation, Warehousing & Utils	0.0%	0.0%	UNDER	0.6%	0.4%	OVER	1.9%	2.4%	UNDER
All Other	-0.1%	-0.1%	UNDER	-0.6%	0.2%	UNDER	-0.6%	0.8%	UNDER
Total Private	0.0%	0.1%	UNDER	0.4%	0.6%	UNDER	1.2%	1.8%	UNDER
Government (Includes Public Schools & Hospitals)	-1.1%	-0.1%	UNDER	-1.0%	0.1%	UNDER	-2.0%	0.4%	UNDER
Total Nonfarm	-0.2%	0.0%	UNDER	0.2%	0.5%	UNDER	0.8%	1.6%	UNDER

Indiana Private Sector Employment Growth Since July 2009

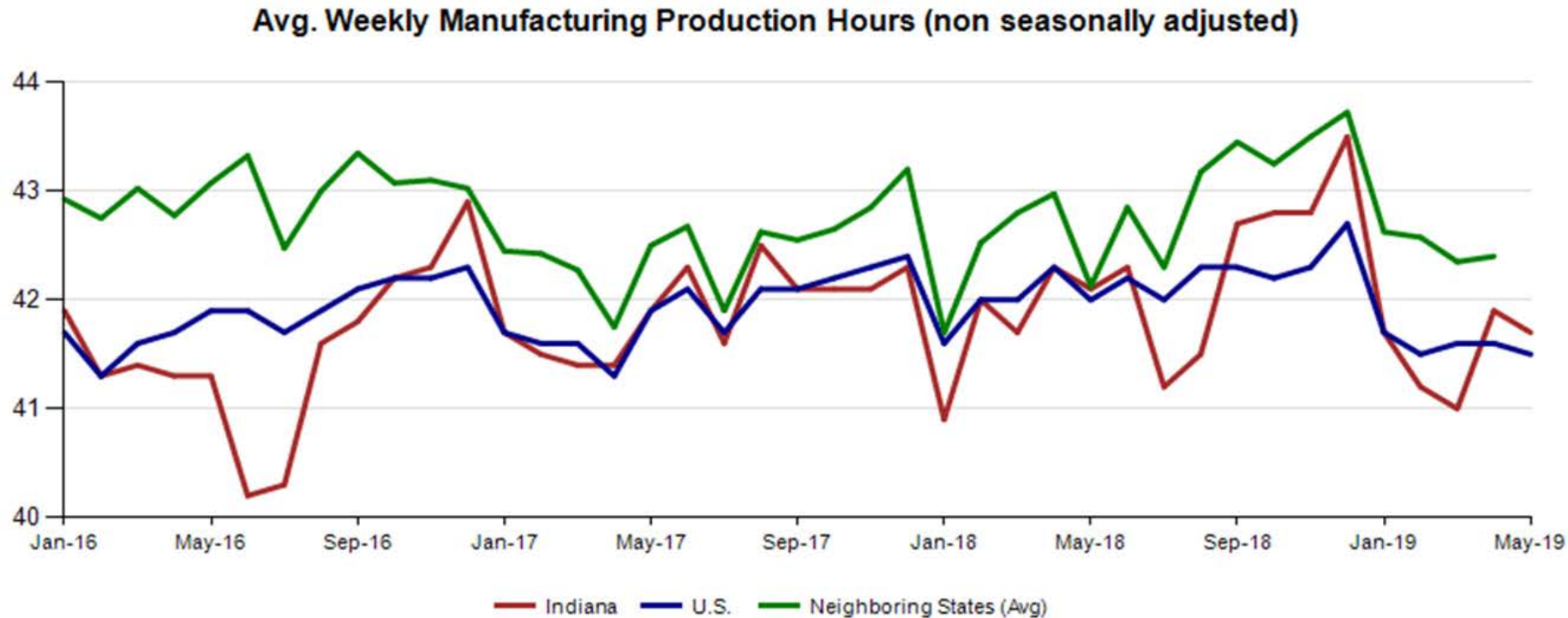
Indiana is trailing the U.S. in private job growth since July 2009. The U.S. has grown by 18.9% while Indiana has grown by 18.0%.

Private Sector Job Growth Since the Low Point of Employment in Indiana



Avg. Weekly Manufacturing Production Hours

May 2019 average weekly hours for Indiana manufacturing production hours decreased 0.2 to 41.7 hours. National manufacturing declined 0.1 to 41.5 weekly hours, and Midwest states increased 0.1 to 40.7 hours per week (April 2019 data).



LAUS Monthly Labor Force Report

INDIANA
DEPARTMENT OF
WORKFORCE
DEVELOPMENT

MONTHLY
BRIEFING

Current Employment Statistics (CES) and Local Area Unemployment Statistics (LAUS)

Point-in-Time Comparison

Month NSA	Labor Force	Employed	Unemployed	IN Rate	Total NonFarm	Total Private	Regular UI Claims
Dec-16	3,289,568	3,161,214	128,354	3.9	3,118,600	2,681,200	24,599
May-19	3,368,523	3,269,725	98,798	2.9	3,181,000	2,753,100	14,296
Change	78,955	108,511	(29,556)	(1.0)	62,400	71,900	(10,303)

Month SA	Labor Force	Employed	Unemployed	IN Rate	Total NonFarm	Total Private	Regular UI Claims
Dec-16	3,323,233	3,190,341	132,892	4.0	3,092,100	2,665,800	24,599
May-19	3,404,857	3,283,828	121,029	3.6	3,167,000	2,742,100	14,296
Change	81,624	93,487	(11,863)	(0.4)	74,900	76,300	(10,303)

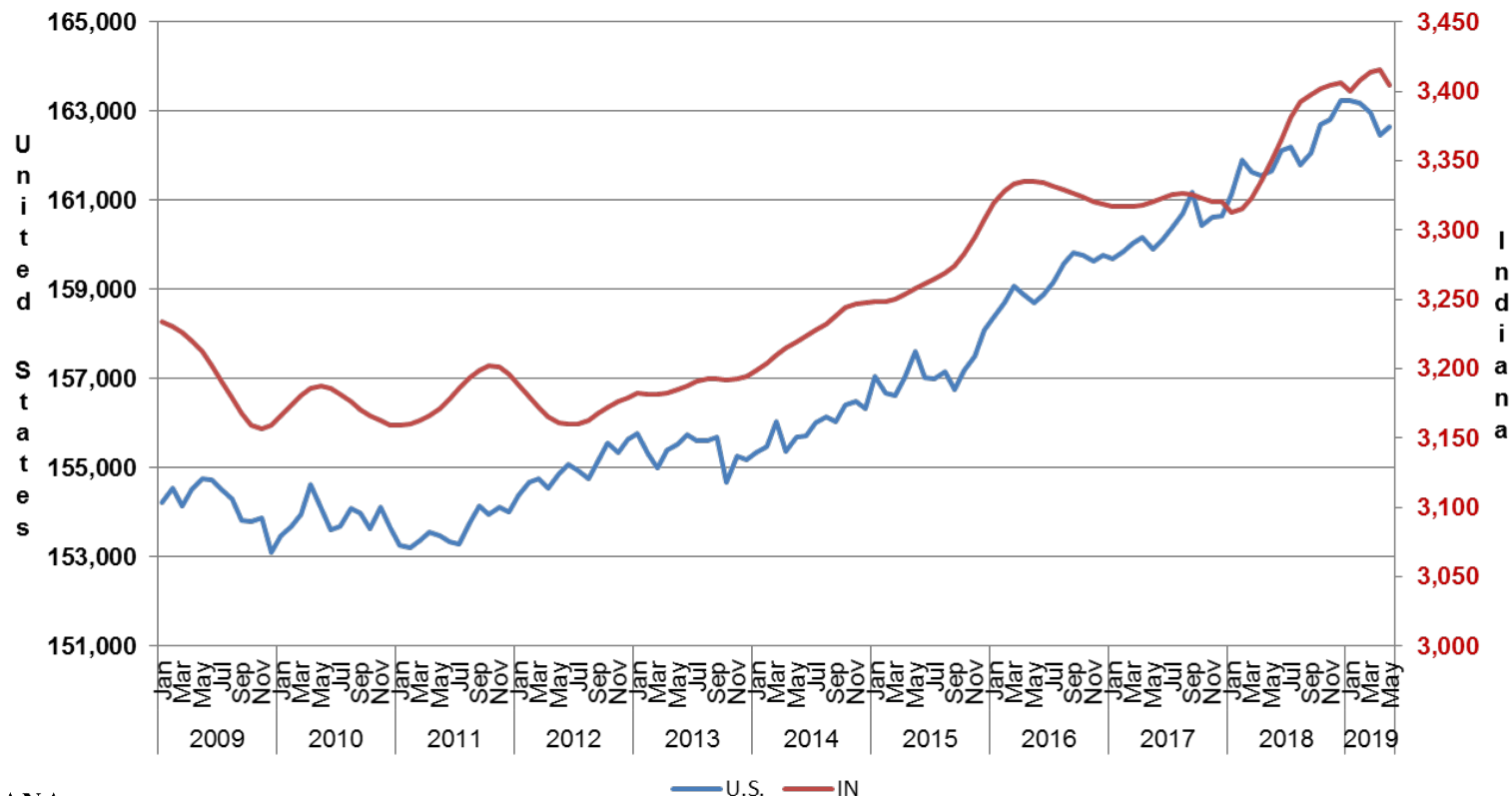


Indiana Labor Force Since July '09 Indiana Trough

May 2019 Indiana Seasonally Adjusted Labor Force stands at 3,404,857

- Employed labor force **decreased** 8,365 over the month
- Unemployment **decreased** by 2,312 over the month

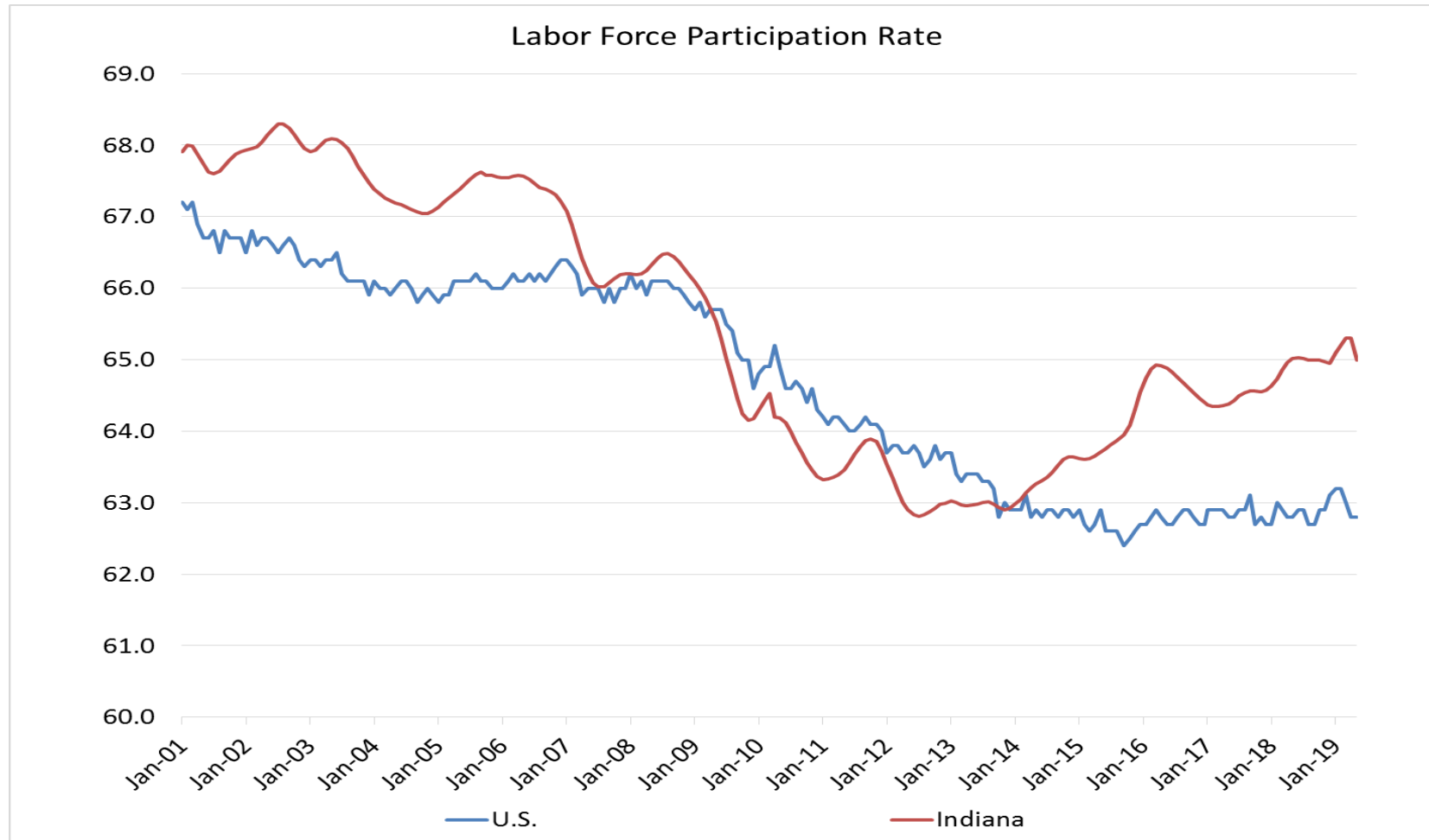
Indiana & U.S. Labor Force, 2009-2019 (in 1000s)



Source: Current Employment Statistics (seasonally adjusted)

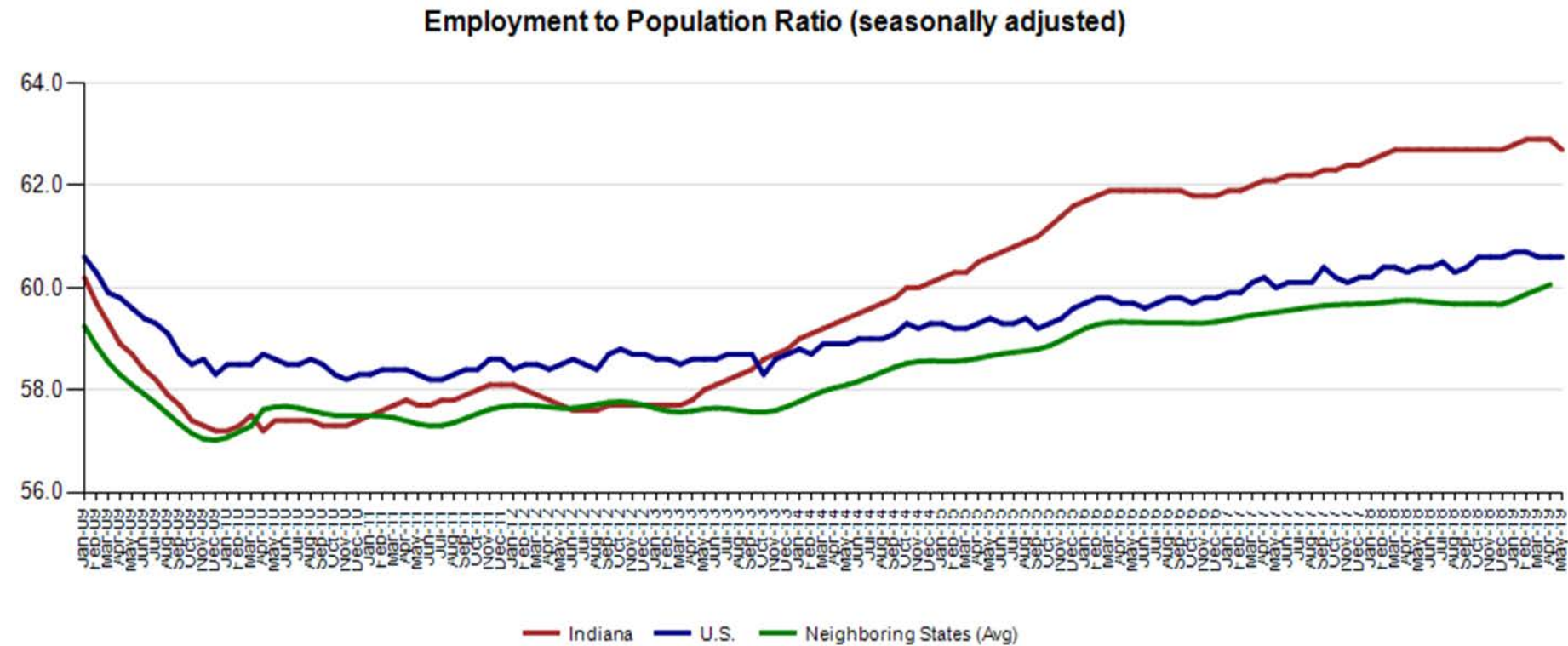
Indiana Labor Force Participation Rate Compared to U.S.

Indiana is at 65.0% compared to U.S. at 62.8%



Employment to Population Ratio (seasonally adjusted)

The Indiana Employment to Population Ratio for May 2019 is 62.7% compared to the U.S. at 60.6%



Alternative Measures of Labor Underutilization

2nd Quarter 2018 through 1st Quarter 2019 Averages

State	U-1	U-2	U-3	U-4	U-5	U-6
Illinois	1.6	2.1	4.3	4.4	5.1	8.1
Indiana	1.1	1.8	3.7	3.9	4.4	6.6
Kentucky	1.4	1.6	4.4	4.7	5.6	8.3
Michigan	1.2	1.8	4	4.3	4.8	7.6
Minnesota	0.8	1.6	3	3.1	3.5	5.5
Ohio	1.4	2.1	4.4	4.7	5.4	8.2
Wisconsin	0.9	1.7	2.9	3	3.5	5.7
United States	1.4	1.8	3.8	4.1	4.7	7.6

The six state measures are based on the same definitions as those published for the U.S.:

- U-1, persons unemployed 15 weeks or longer, as a percent of the civilian labor force;
- U-2, job losers and persons who completed temporary jobs, as a percent of the civilian labor force;
- U-3, total unemployed, as a percent of the civilian labor force (this is the definition used for the official unemployment rate);
- U-4, total unemployed plus discouraged workers, as a percent of the civilian labor force plus discouraged workers;
- U-5, total unemployed, plus discouraged workers, plus all other marginally attached workers, as a percent of the civilian labor force plus all marginally attached workers; and
- U-6, total unemployed, plus all marginally attached workers, plus total employed part time for economic reasons, as a percent of the civilian labor force plus all marginally attached workers.



Midwest Comparison Rates: Seasonally Adjusted Over the Year and Over the Month

	May 2018	Apr-19	May 2019	Monthly change	Yearly change
Indiana	3.5%	3.6%	3.6%	0.0%	0.1%
U.S.	3.8%	3.6%	3.6%	0.0%	-0.2%
Illinois	4.3%	4.4%	4.4%	0.0%	0.1%
Kentucky	4.4%	4.0%	4.0%	0.0%	-0.4%
Michigan	4.2%	4.1%	4.2%	0.1%	0.0%
Minnesota	2.9%	3.3%	3.3%	0.0%	0.4%
Ohio	4.6%	4.2%	4.1%	-0.1%	-0.5%
Wisconsin	3.1%	2.8%	2.8%	0.0%	-0.3%

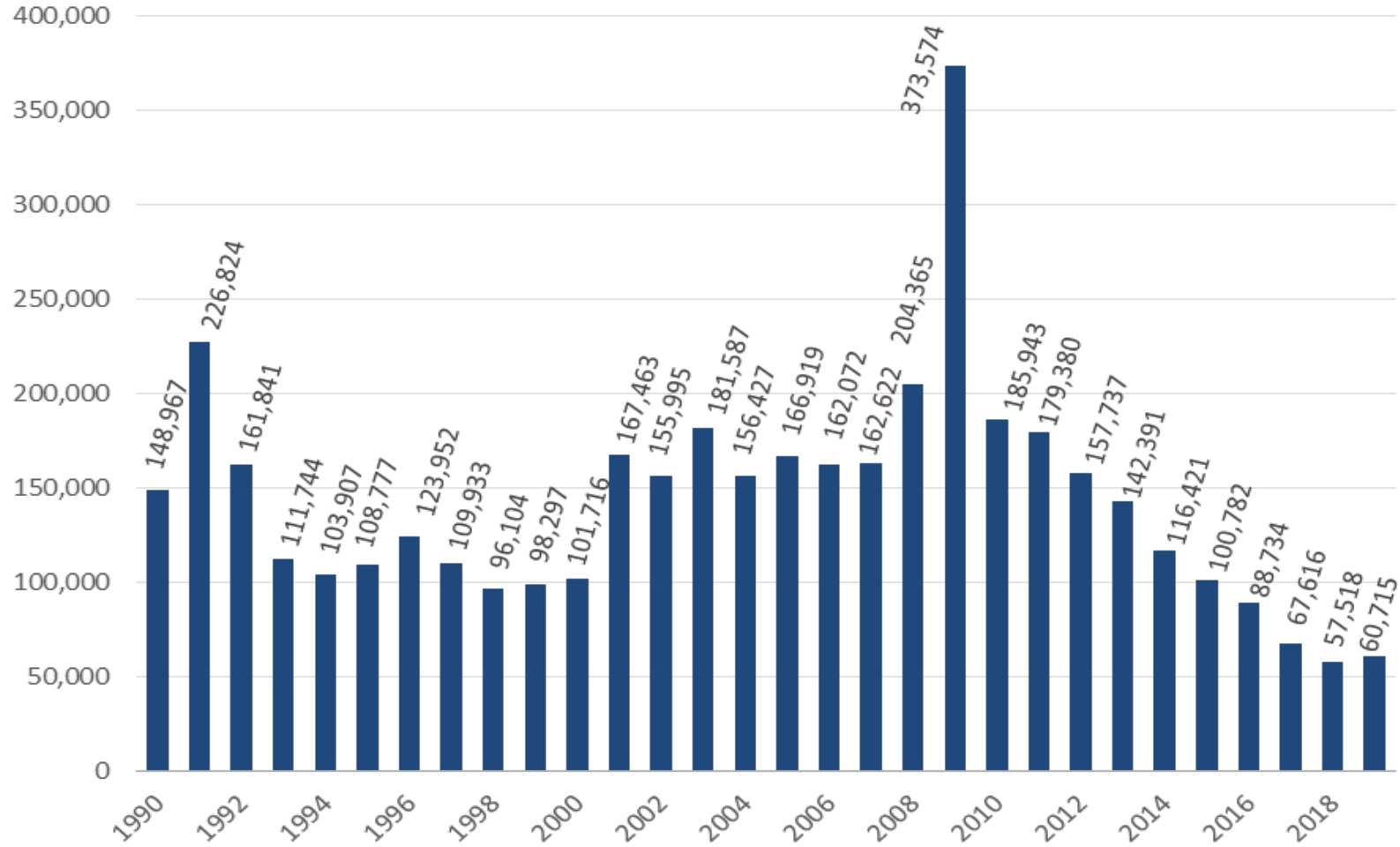
***2018 Benchmark**

Confidential & Deliberative



Weekly Initial Claims – Week 23

Total aggregated UI claims for the first 23 weeks of each year as reported to ETA.



Regular UI Claims

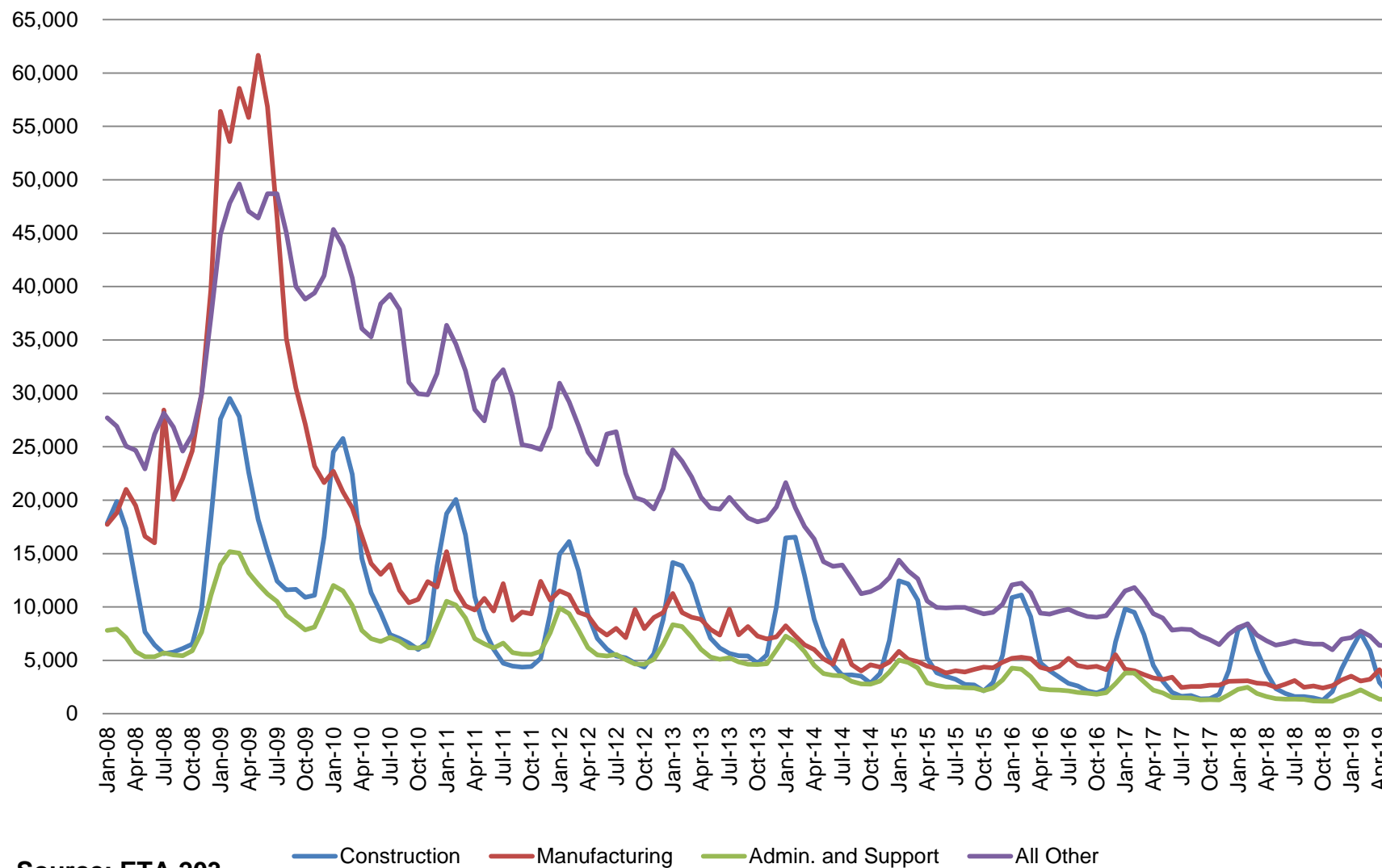
*Reference Week (12th of the month) Input to LAUS Unemployment Rate Model
Declines over the month - and over the year*

	2009	2013	2014	2015	2016	2017	2018	2019	OTM Change	OTY Change
JANUARY	150,888	63,223	49,377	41,333	36,555	33,137	24,968	21,808	5,115	(3,160)
FEBRUARY	154,388	60,183	52,316	39,282	36,909	32,463	25,879	23,992	2,184	(1,887)
MARCH	157,257	54,578	45,928	35,755	32,439	32,141	21,171	22,446	(1,546)	1,275
APRIL	143,842	48,548	39,717	25,597	23,895	21,998	17,618	17,914	(4,532)	296
MAY	141,174	42,997	32,460	22,807	22,300	19,431	14,774	14,296	(3,618)	(478)
JUNE	136,670	41,722	29,524	22,030	22,025	16,722	14,653			
JULY	121,336	44,597	30,845	22,341	22,326	15,775	15,098			
AUGUST	103,509	39,998	26,061	21,472	20,737	15,692	13,959			
SEPTEMBER	92,680	39,563	23,685	20,941	19,372	14,334	12,981			
OCTOBER	86,275	37,778	23,768	19,917	19,143	14,266	13,083			
NOVEMBER	82,451	38,517	25,315	21,199	19,547	14,347	15,499			
DECEMBER	91,814	42,484	30,982	26,249	24,599	17,345	16,693			



Regular UI Claims by Industry

For the Reference Week of Each Month



Source: ETA 203

Indiana: Not in Labor Force by Gender and Age

June 2018 – May 2019

Current Population Survey, Bureau of Labor Statistics (in 1000s)

	Total	Age			Sex	
		16 to 24 years	25 to 54 years	55 years and over	Men	Women
	Indiana					
Total not in the labor force	1,823.5	293.5	424.8	1,105.2	722.4	1,101.1
Do not want a job now	1,713.8	256.6	386.0	1,071.2	671.0	1,042.8
Want a job	109.7	37.0	38.8	33.9	51.4	58.3
Did not search for work in previous year	73.7	22.9	23.4	27.4	33.9	39.8
Searched for work in previous year	36.0	14.0	15.4	6.5	17.5	18.5
Not available to work now	9.0	3.7	4.4	1.0	4.0	5.0
Available to work now	26.9	10.4	11.0	5.5	13.5	13.5
Reason not currently looking:						
Discouragement over job prospects	5.2	2.4	1.3	1.6	3.2	2.1
Reasons other than discouragement	21.7	8.0	9.7	4.0	10.3	11.4

Indiana: Labor Force by Gender and Age

June 2018 – May 2019

Current Population Survey, Bureau of Labor Statistics (in 1000s)

	Civilian labor force participation	Unemployment rate
Male, All Races		
Age 16-19	45.2	14.7
Age 20-24	82.5	5.2
Age 25-34	90.0	3.7
Age 35-44	91.7	2.3
Age 45-54	88.7	2.7
Age 55-64	72.2	2.1
Age 65+	25.3	3.0
Female, All Races		
Age 16-19	40.9	11.4
Age 20-24	77.4	5.4
Age 25-34	75.3	3.6
Age 35-44	75.7	3.1
Age 45-54	77.3	3.2
Age 55-64	63.2	1.8
Age 65+	15.3	4.3

Source: Table a. Employment status of the civilian non-institutional population by sex, age, race, and Hispanic origin, June 2018 - May 2019 (based on CPS) (Numbers in thousands)



Indiana: Labor Force by Gender and Age

	Civilian Labor Force	Unemployment Rate
Both Sexes		
All Races		
Age 16+	65.1	3.6
Age 16-19	43.1	13.2
Age 20+	66.7	3.1
White		
Age 16+	65.3	3.0
Age 16-19	45.1	11.2
Age 20+	66.7	2.7
Black		
Age 16+	64.0	8.1
Age 16-19	37.5	27.9
Age 20+	66.5	7.0
Hispanic		
Age 16+	71.1	2.9
Age 16-19	50.0	8.0
Age 20+	73.1	2.5
Male, All Races		
Age 16+	71.6	3.5
Age 20+	73.6	3.0
Female, All Races		
Age 16+	59.0	3.7
Age 20+	60.3	3.3
Male, White		
Age 16+	72.1	3.0
Age 20+	73.8	2.6
Female, White		
Age 16+	58.8	3.1
Age 20+	60.0	2.7

*June 2018 – May 2019
Current Population Survey, Bureau
of Labor Statistics (in 1000s)*

Table a. Employment status of the civilian non-institutional population by sex, age, race, and Hispanic origin, June 2018 - May 2019 (based on CPS)



Indiana Economy in the news

Elkhart-Goshen metropolitan statistical area economy rated fourth in nation by Walton Foundation study

[John Kline](#), Goshen News

Sunday, June 16, 2019 12:45 PM

GOSHEN — Fueled by a rapid expansion in travel, tourism and recreation over the past decade, as well as a strong manufacturing base, the Elkhart-Goshen metropolitan statistical area has been ranked fourth in the nation by The [Walton Family Foundation](#)'s recently released “[Most Dynamic Metropolitans](#)” study.

The new study, released Monday, ranks the economic performance of metropolitan areas.

“As the dominant economic geography of America, metropolitan statistical areas largely determine our success as a nation. These groups of counties with a large central core account for 88.6 percent of jobs, 89.1 percent of wages and 90.0 percent of [Gross Domestic Product](#),” the study states. “Further, metropolitan statistical areas account for the bulk of innovation such as research and development and patenting activity. Understanding the mechanisms underpinning the growth of top-performing metropolitan areas, and sharing best practices, could assist other communities in boosting their economic fortunes. The Most Dynamic Metropolitan Index, ranking 379 metropolitan areas, seeks to provide an objective measure of the economic vibrancy of communities where the lion’s share of Americans work and live.”

<https://indianaeconomicdigest.com/Content/Default/Top-Story/Article/Elkhart-Goshen-metropolitan-statistical-area-economy-rated-fourth-in-nation-by-Walton-Foundation-study/-3/5309/96477>

