

04/17/2019

Indiana's Employment and Labor Force Estimates

March 2019

INDIANA
DEPARTMENT OF
WORKFORCE
DEVELOPMENT

Key Points: March 2019

Unemployment Rate

- Indiana = 3.6%
- U.S. = 3.8%

Indiana's rate has increased 0.2 percentage points over the year from March 2018.

Indiana's Labor Force

- Increased 6,769 due to an increase in employment of 4,135 and an increase in unemployment of 2,634.
- Increased by 43,244 over the year and is at 3,414,389 which is a new Labor force peak.

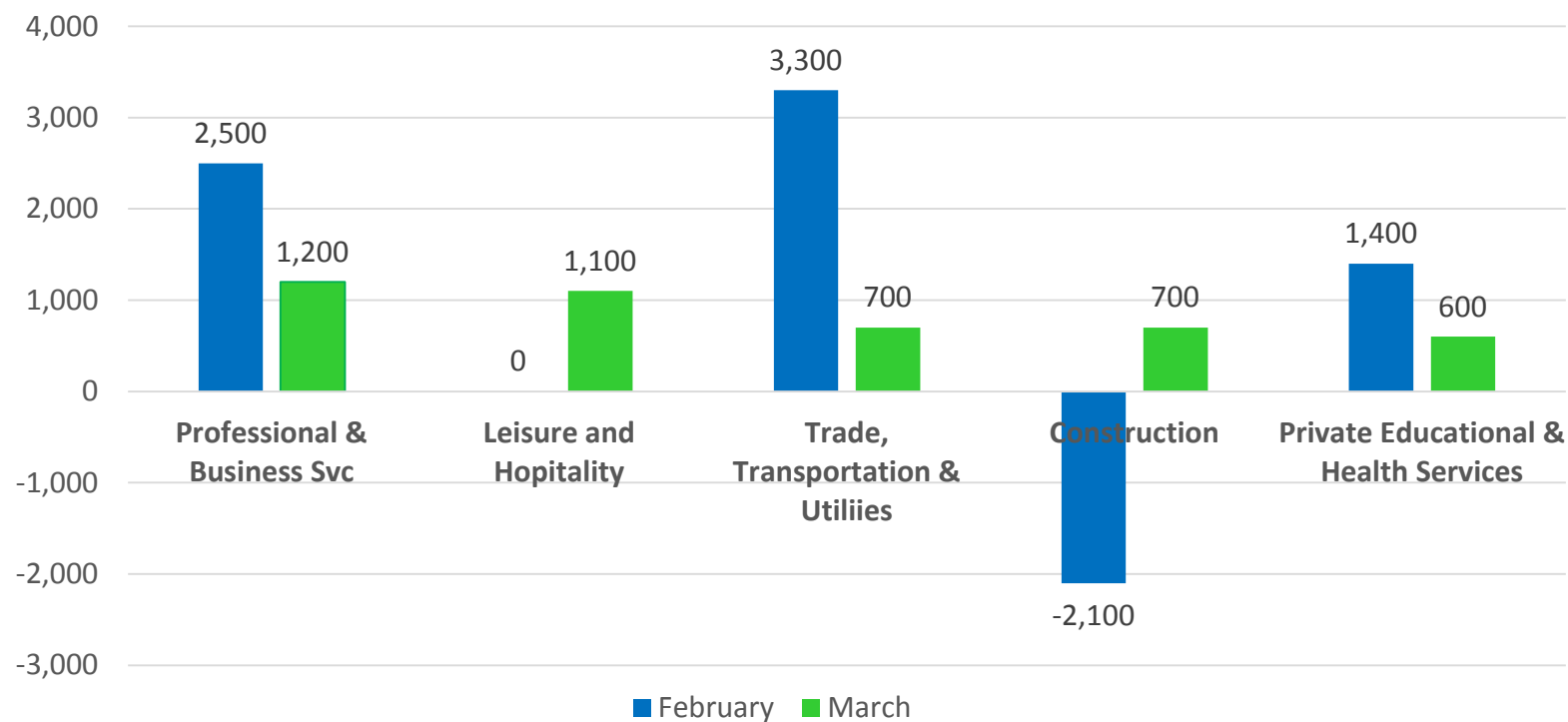
Indiana's labor force participation rate increased 0.1% over the month and is currently 65.3%. This remains above the U.S. labor force participation rate of 63.0%.



Key Points: March 2019

Indiana's Private Employment

- Increased by 5,300 over the month and had gains of 38,100 over the year.
- March private employment = 2,750,400



Revisions to February 2019 Estimates

INDUSTRY TITLE	Jan	Feb Prel	Feb Rev	Revision	Chg from Jan	Pre Chg from Jan
Total Nonfarm	3171.9	3177.4	3173.8	-3.6	1.9	5.5
Total Private	2743.2	2747.6	2745.1	-2.5	1.9	4.4
Goods Producing	700.7	698.5	697.3	-1.2	-3.4	-2.2
Service-Providing	2471.2	2478.9	2476.5	-2.4	5.3	7.7
Private Service Providing	2042.5	2049.1	2047.8	-1.3	5.3	6.6
Construction	149.4	147.3	147.6	0.3	-1.8	-2.1
Manufacturing	545.1	545.1	543.6	-1.5	-1.5	0.0
Trade, Transportation, and Utilities	599.7	603.0	601.0	-2.0	1.3	3.3
<i>Wholesale Trade</i>	120.4	121.0	120.9	-0.1	0.5	0.6
<i>Retail Trade</i>	320.2	320.6	320.0	-0.6	-0.2	0.4
<i>Transportation, Warehousing, and Utilities</i>	159.1	161.4	160.1	-1.3	1.0	2.3
Information	28.5	28.6	28.6	0.0	0.1	0.1
Financial Activities	138.1	137.2	137.4	0.2	-0.7	-0.9
Finance and Insurance	102.6	102.5	103.0	0.5	0.4	-0.1
Real Estate and Rental and Leasing	35.5	34.7	34.4	-0.3	-1.1	-0.8
Professional and Business Services	346.5	349.0	349.7	0.7	3.2	2.5
<i>Professional, Scientific, and Technical Services</i>	122.7	124.4	124.8	0.4	2.1	1.7
<i>Management of Companies and Enterprises</i>	34.3	34.5	34.5	0.0	0.2	0.2
<i>Admin & Support & Waste Mgmt & Remediation Services</i>	189.5	190.1	190.4	0.3	0.9	0.6
Education and Health Services	486.7	488.1	487.8	-0.3	1.1	1.4
<i>Educational Services</i>	68.8	68.8	67.9	-0.9	-0.9	0.0
<i>Health Care and Social Assistance</i>	417.9	419.3	419.9	0.6	2.0	1.4
Leisure and Hospitality	310.0	310.0	310.3	0.3	0.3	0.0
Other Services	133.0	133.2	133.0	-0.2	0.0	0.2
Government	428.7	429.8	428.7	-1.1	0.0	1.1



Comparing Local Area Unemployment Statistics (LAUS) and Current Employment Statistics (CES)

LAUS (Labor Force by Residence)

This counts people, not jobs, and is...

- An estimate of employment based on where the employee lives, rather than where they work
- Used in calculating the labor force

CES (Employment by Job)

This counts jobs, not people, and is...

- An estimate of employment based on the location of the job regardless of the worker's residence
- Also called nonag wage and salary or nonfarm employment
- Used in Quarterly Census of Employment and Wages (QCEW), Occupational Employment Statistics (OES) and CES data

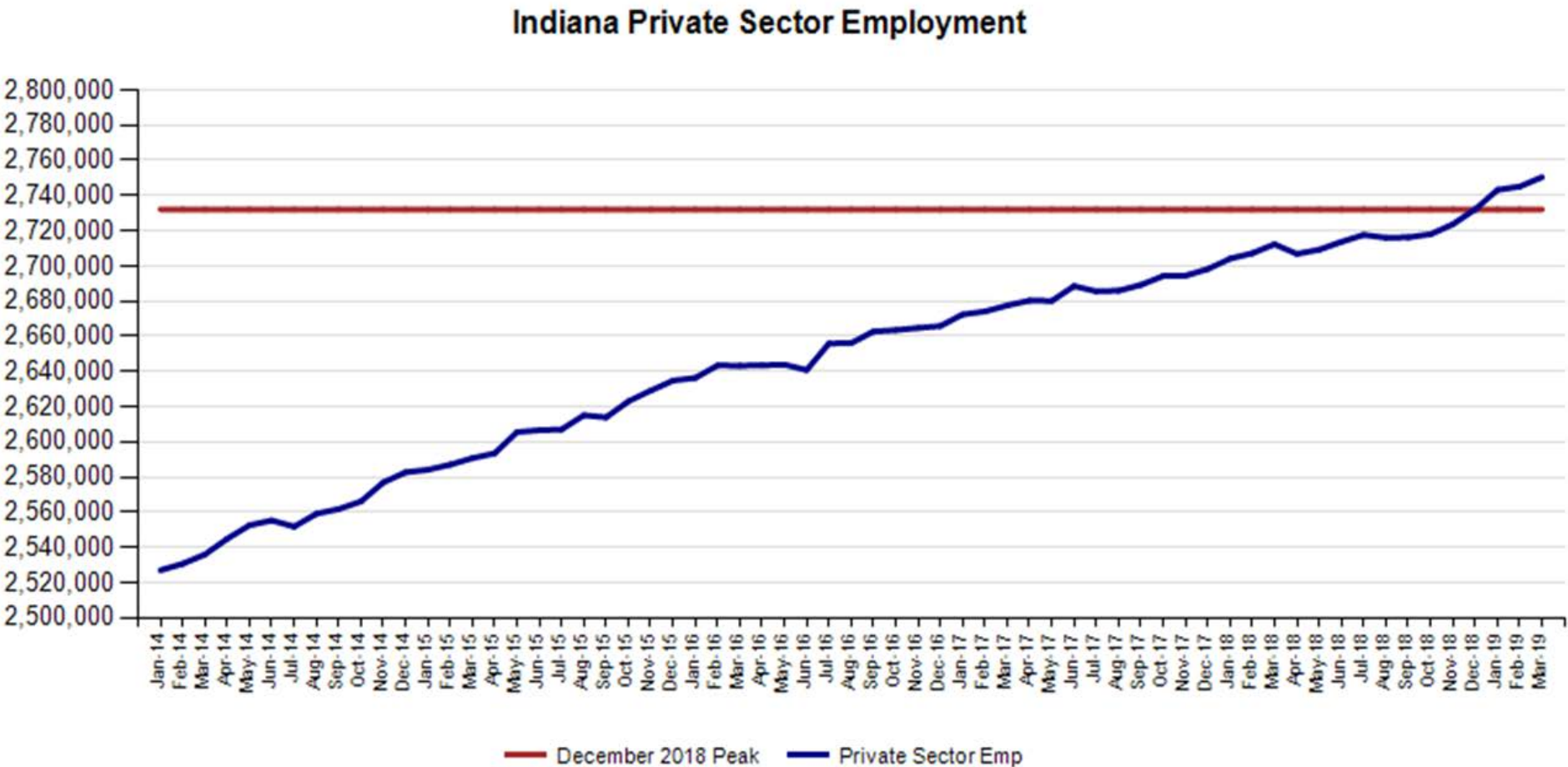
CES Monthly Jobs Report

INDIANA
DEPARTMENT OF
WORKFORCE
DEVELOPMENT

MONTHLY
BRIEFING

Indiana Private Sector Employment

March total private employment is 18,300 above the December 2018 peak.



Indiana Private Sector Employment Change

March 2019 increased by 5,300 jobs over the month and is up 38,100 over the year.

IN Employment Change Over the Month, Year-to-Date and Over the Year (seasonally adjusted)

Industry	March 2018	December 2018	February 2019	March 2019	Month Change	Y-to-D Change	Y-to-Y Change
Private Educational & Health Services	472.1	484.4	487.8	488.4	0.6	4.0	16.3
.....Private Educational Services	63.0	66.4	67.9	68.2	0.3	1.8	5.2
.....Health Care & Social Assistance	409.1	418.0	419.9	420.2	0.3	2.2	11.1
Manufacturing	540.4	544.3	543.6	543.9	0.3	-0.4	3.5
Professional & Business Services	344.3	344.2	349.7	350.9	1.2	6.7	6.6
Financial Activities	138.8	138.4	137.4	138.4	1.0	0.0	-0.4
Construction	141.0	147.0	147.6	148.3	0.7	1.3	7.3
Leisure and Hospitality	310.8	308.9	310.3	311.4	1.1	2.5	0.6
Trade, Transportation & Utilities	597.5	597.5	601.0	601.7	0.7	4.2	4.2
.....Trade	443.5	440.2	440.9	441.9	1.0	1.7	-1.6
.....Transportation, Warehousing & Utilities	154.0	157.3	160.1	159.8	-0.3	2.5	5.8
All Other	167.4	167.4	167.7	167.4	-0.3	0.0	0.0
					0.0	0.0	0.0
Total Private	2,712.3	2,732.1	2,745.1	2,750.4	5.3	18.3	38.1
Government (Includes Public Schools & Hospitals)	427.3	429.0	428.7	430.4	1.7	1.4	3.1
Total Nonfarm	3,139.6	3,161.1	3,173.8	3,180.8	7.0	19.7	41.2
					0.0	0.0	0.0
United States Total Private	125,870.0	127,790.0	128,115.0	128,297.0	182.0	507.0	2,427.0

- Professional & Business Services **gained** 1,200 jobs over the month and Leisure and Hospitality **gained** 1,100.
- All Other category **lost** 300 jobs over the month.

Indiana Private Sector Employment Change From Peak and Trough

March 2019 estimates show Indiana has gained 426,200 jobs since July 2009.

IN Statewide Estimates (seasonally adjusted) -- March 2019

Supersector	Private Empl. Peak Dec 2018	Private Empl. Trough July 2009	February 2019	March 2019	Month to Month Change	Change Since Peak	Change Since Trough	% Month to Month Change
Private Educational & Health Services	484.4	411.1	487.8	488.4	0.6	4.0	77.3	0.1%
.....Private Educational Services	66.4	63.3	67.9	68.2	0.3	1.8	4.9	0.4%
.....Health Care & Social Assistance	418.0	347.8	419.9	420.2	0.3	2.2	72.4	0.1%
Manufacturing	544.3	426.7	543.6	543.9	0.3	-0.4	117.2	0.1%
Professional & Business Services	344.2	256.9	349.7	350.9	1.2	6.7	94.0	0.3%
Financial Activities	138.4	130.7	137.4	138.4	1.0	0.0	7.7	0.7%
Construction	147.0	117.4	147.6	148.3	0.7	1.3	30.9	0.5%
Leisure and Hospitality	308.9	276.8	310.3	311.4	1.1	2.5	34.6	0.4%
Trade, Transportation & Utilities	597.5	546.0	601.0	601.7	0.7	4.2	55.7	0.1%
.....Trade	440.2	421.5	440.9	441.9	1.0	1.7	20.4	0.2%
.....Transportation, Warehousing & Utilities	157.3	124.5	160.1	159.8	-0.3	2.5	35.3	-0.2%
All Other	167.4	158.6	167.7	167.4	-0.3	0.0	8.8	-0.2%
					0.0	0.0	0.0	#DIV/0!
Total Private	2,732.1	2,324.2	2,745.1	2,750.4	5.3	18.3	426.2	0.2%
Government (Includes Public Schools & Hospitals)	429.0	434.5	428.7	430.4	1.7	1.4	-4.1	0.4%
Total Nonfarm	3,161.1	2,758.7	3,173.8	3,180.8	7.0	19.7	422.1	0.2%
					0.0	0.0	0.0	#DIV/0!
United States Total Private	127,790.0	108,164.0	128,115.0	128,297.0	182.0	507.0	20,133.0	0.1%

- Manufacturing has accounted for 117,200 of this **increase** of jobs.
- Professional & Business Services **increased** by 94,000 jobs over this time frame.

Indiana Private Sector Employment Change Compared to U.S.

March 2019 Indiana private sector grew by 0.2% and the U.S. grew by 0.1%.

IN Employment Change Compared to the U.S.

Industry	Indiana Month to Month	U.S. Month to Month	Indiana vs U.S. Change	Indiana Year-to-Date	U.S. Year-to-Date	Indiana vs U.S. Change	Indiana Year-to-Year	U.S. Year-to-Year	Indiana vs U.S. Change
Private Educational & Health Services	0.1%	0.3%	UNDER	0.8%	0.6%	OVER	3.5%	2.3%	OVER
.....Private Educational Services	0.4%	0.2%	OVER	2.7%	0.5%	OVER	8.3%	1.7%	OVER
.....Health Care & Social Assistance	0.1%	0.3%	UNDER	0.5%	0.7%	UNDER	2.7%	2.4%	OVER
Manufacturing	0.1%	0.0%	OVER	-0.1%	0.1%	UNDER	0.6%	1.7%	UNDER
Professional & Business Services	0.3%	0.2%	OVER	1.9%	0.5%	OVER	1.9%	2.6%	UNDER
Financial Activities	0.7%	0.1%	OVER	0.0%	0.3%	UNDER	-0.3%	1.2%	UNDER
Construction	0.5%	0.2%	OVER	0.9%	0.6%	OVER	5.2%	3.4%	OVER
Leisure and Hospitality	0.4%	0.2%	OVER	0.8%	0.8%	OVER	0.2%	2.7%	UNDER
Trade, Transportation & Utilities	0.1%	0.0%	OVER	0.7%	0.1%	OVER	0.7%	0.8%	UNDER
.....Trade	0.2%	-0.1%	OVER	0.4%	0.0%	OVER	-0.4%	0.2%	UNDER
.....Transportation, Warehousing & Utils	-0.2%	0.1%	UNDER	1.6%	0.6%	OVER	3.8%	3.0%	OVER
All Other	-0.2%	0.3%	UNDER	0.0%	0.3%	UNDER	0.0%	1.4%	UNDER
	#DIV/0!	#DIV/0!	UNDER	#DIV/0!	#DIV/0!	UNDER	#DIV/0!	#DIV/0!	UNDER
Total Private	0.2%	0.1%	OVER	0.7%	0.4%	OVER	1.4%	1.9%	UNDER
Government (Includes Public Schools & Hospitals)	0.4%	0.1%	OVER	0.3%	0.2%	OVER	0.7%	0.5%	OVER
Total Nonfarm	0.2%	0.1%	OVER	0.6%	0.4%	OVER	1.3%	1.7%	UNDER

Midwestern Sector Employment Change Compared to Indiana

Percentage growth ranking comparison of Midwestern States and selected industry sectors since the Indiana low point. (February data)

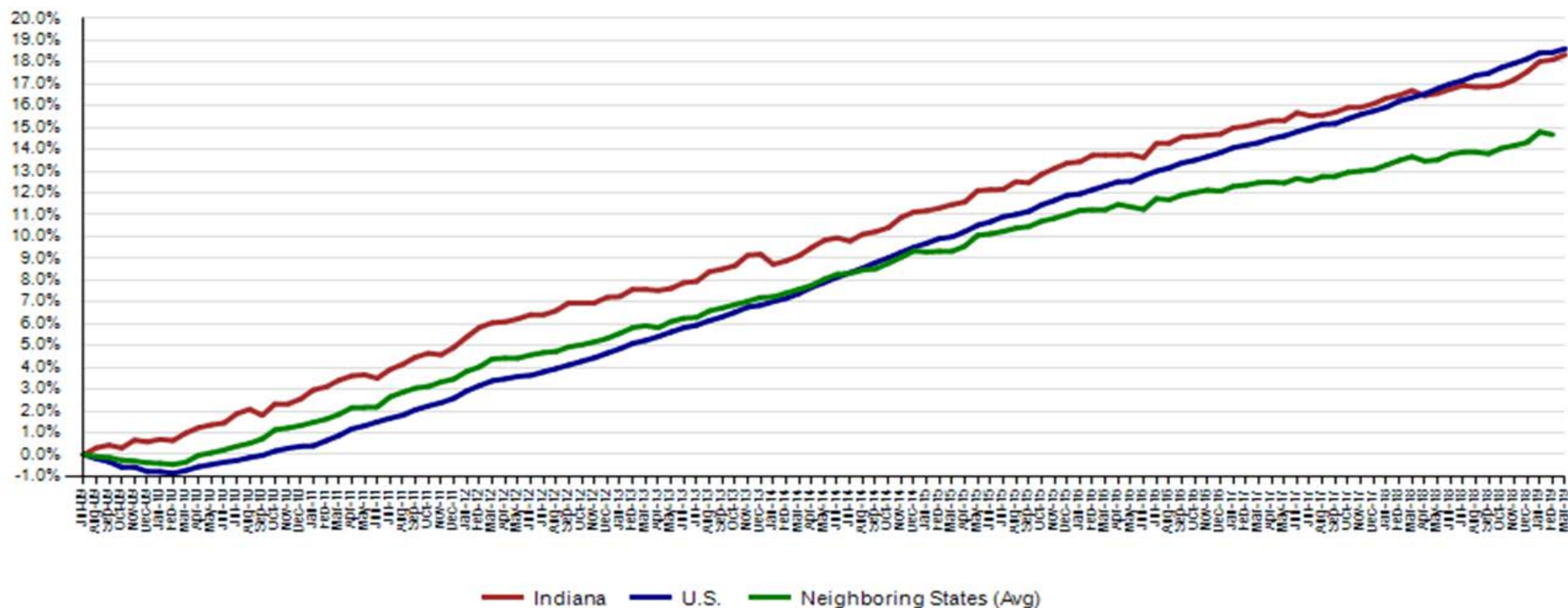
Feb	TNF	Private	Construction	Manufacturing	Professional & Technical Services	Education and Health Services
Illinois	14	12	25	15	27	33
Indiana	21	19	17	2	12	25
Kentucky	29	28	32	10	25	37
Michigan	12	10	6	1	13	45
Minnesota	24	23	13	17	34	23
Ohio	13	13	9	3	37	35
Wisconsin	4	4	19	9	24	39

- Indiana Professional and Technical Services sector growth **exceeded** the other Midwestern states since July 2009 . Four Midwestern States were among the top 10 in manufacturing growth over this time.

Indiana Private Sector Employment Growth Since July 2009

Indiana is trailing the U.S. in private job growth since July 2009. The U.S. has grown by 18.6% while Indiana has grown by 18.3%.

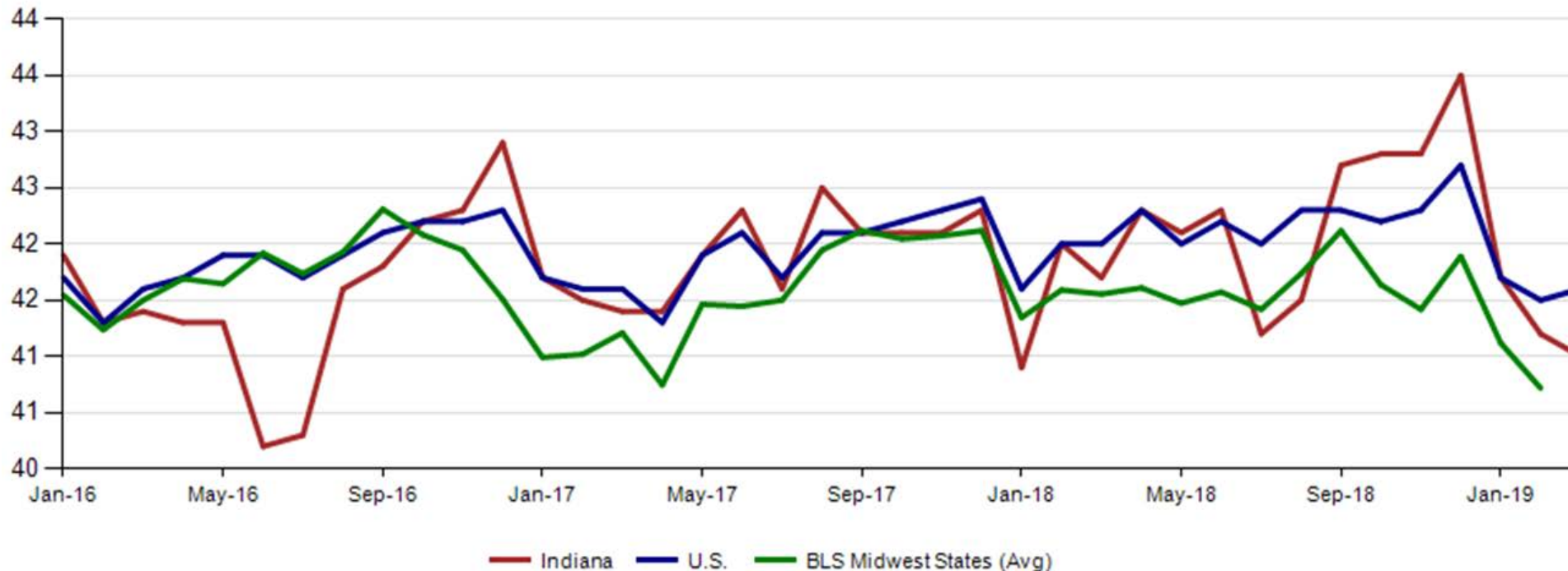
Private Sector Job Growth Since the Low Point of Employment in Indiana



Avg. Weekly Manufacturing Production Hours

March 2019 average weekly hours for Indiana manufacturing production hours declined 0.2 to 41.0 hours. National manufacturing increased by 0.1 to 41.6 weekly hours Midwest states decreased 0.4 to 40.7 hours per week (December 2018 data).

Avg. Weekly Manufacturing Production Hours (non seasonally adjusted)



LAUS Monthly Labor Force Report

INDIANA
DEPARTMENT OF
WORKFORCE
DEVELOPMENT

MONTHLY
BRIEFING

Current Employment Statistics (CES) and Local Area Unemployment Statistics (LAUS)

Point-in-Time Comparison

Current Employment Statistics (CES) and Local Area Unemployment Statistics (LAUS)
Point-in-Time Comparison

	December 2018 (Peak)	July 2009 (Trough)	February 2019	March 2019	Change Peak	Change Trough	Change Prev. Month
CES Employed (TNF)	3,161.1	2,758.7	3,173.8	3,180.8	19.7	422.1	7.0
LAUS Employed	3,274.9	2,854.2	3,286.9	3,291.1	16.1	436.9	4.1
LAUS Unemployed	117.4	336.8	120.7	123.3	5.9	-213.5	2.6
Labor Force	3,392.3	3,191.0	3,407.6	3,414.4	22.1	223.4	6.8
Unemployment Rate	3.5	10.6	3.5	3.6	0.1	-7.0	0.1

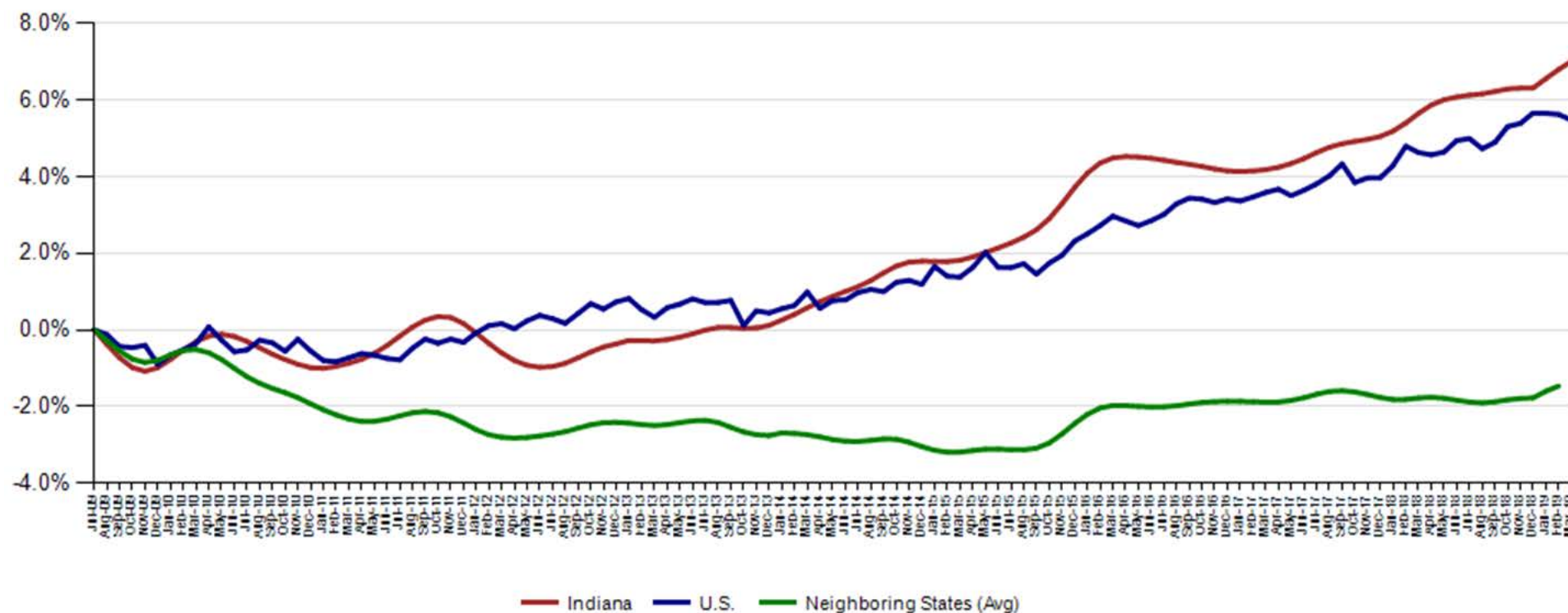


Indiana Labor Force

March 2019 Indiana Seasonally Adjusted Labor Force stands at 3,414,389

- Employed labor force **increased** by 4,135 over the month
- Unemployment **increased** by 2,634 over the month

Labor Force Change Since July 2009 Indiana Trough (seasonally adjusted)



Indiana Labor Force Participation Rate Compared to U.S.

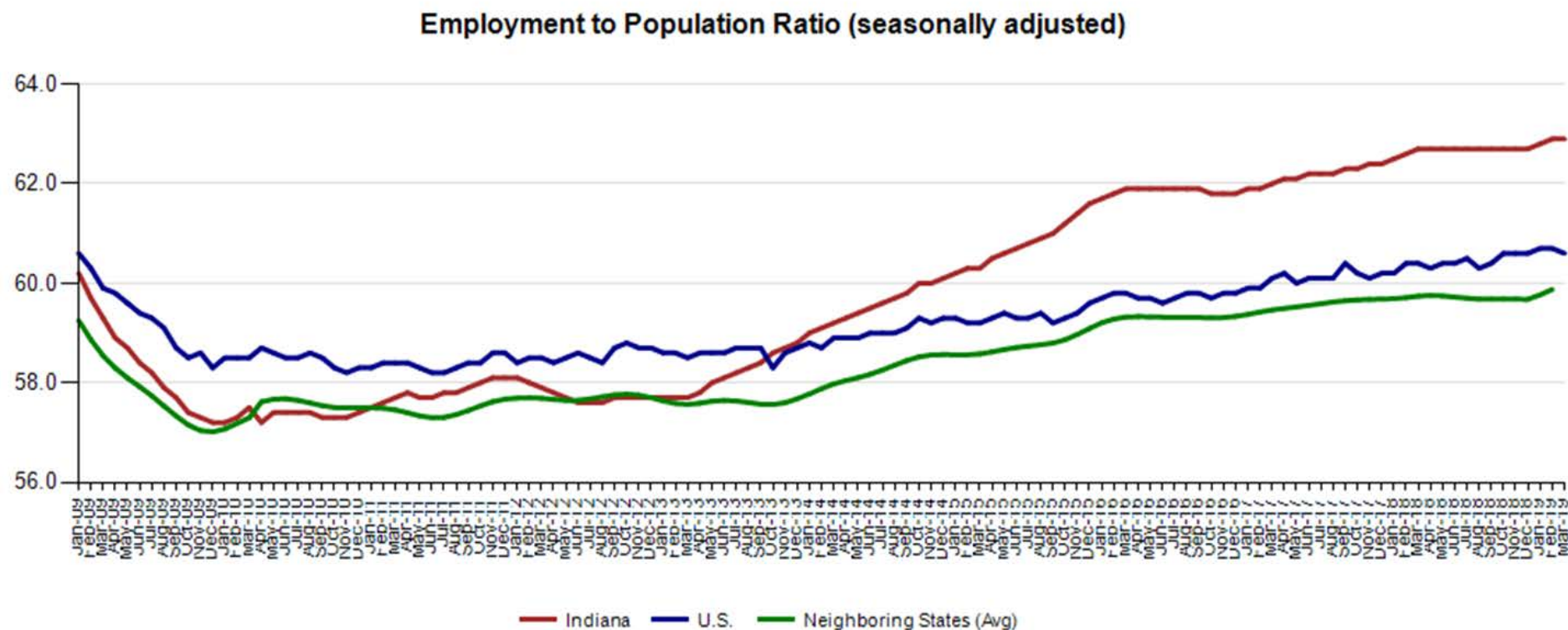
Indiana is at 65.3% compared to U.S. at 63.0%

Labor Force Participation Rate



Employment to Population Ratio

The Indiana Employment to Population Ratio for March 2019 is 62.9% compared to the U.S. at 60.6%



Alternative Measures of Labor Underutilization

2018 Annual Averages

State	U-1	U-2	U-3	U-4	U-5	U-6
ILLINOIS	1.6	2.1	4.2	4.4	5.1	8.1
INDIANA	1.0	1.7	3.5	3.7	4.2	6.6
KENTUCKY	1.3	1.8	4.4	4.6	5.3	8.1
MICHIGAN	1.3	1.8	4.1	4.4	4.9	7.9
MINNESOTA	0.8	1.4	2.8	2.9	3.2	5.4
OHIO	1.4	2.1	4.5	4.7	5.4	8.3
WISCONSIN	0.9	1.6	3.0	3.1	3.5	6.0
UNITED STATES	1.4	1.8	3.9	4.1	4.8	7.7

The six state measures are based on the same definitions as those published for the U.S.:

- U-1, persons unemployed 15 weeks or longer, as a percent of the civilian labor force;
- U-2, job losers and persons who completed temporary jobs, as a percent of the civilian labor force;
- U-3, total unemployed, as a percent of the civilian labor force (this is the definition used for the official unemployment rate);
- U-4, total unemployed plus discouraged workers, as a percent of the civilian labor force plus discouraged workers;
- U-5, total unemployed, plus discouraged workers, plus all other marginally attached workers, as a percent of the civilian labor force plus all marginally attached workers; and
- U-6, total unemployed, plus all marginally attached workers, plus total employed part time for economic reasons, as a percent of the civilian labor force plus all marginally attached workers.



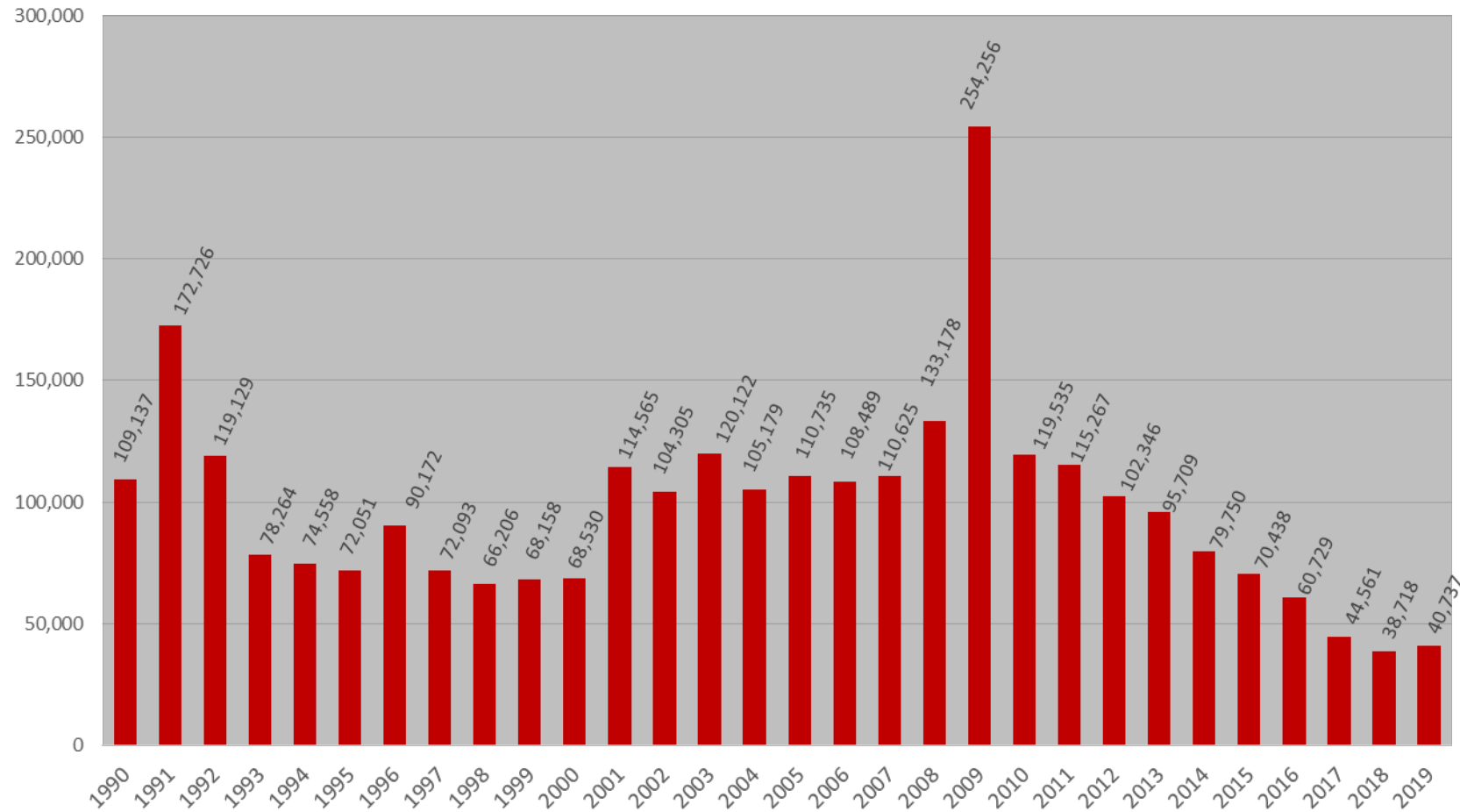
Midwest Comparison Rates: Seasonally
Adjusted Over the Year and Over the Month
(confidential and preliminary)

	March 2018	February 2019	March 2019	Monthly change	Yearly change
Indiana	3.4%	3.5%	3.6%	0.1%	0.2%
U.S.	4.0%	3.8%	3.8%	0.0%	-0.2%
Illinois	4.3%	4.3%	4.4%	0.1%	0.1%
Kentucky	4.3%	4.1%	4.0%	-0.1%	-0.3%
Michigan	4.4%	4.0%	4.0%	0.0%	-0.4%
Minnesota	3.0%	3.1%	3.2%	0.1%	0.2%
Ohio	4.5%	4.6%	4.4%	-0.2%	-0.1%
Wisconsin	3.0%	2.9%	2.9%	0.0%	-0.1%

*2018 Benchmark

Weekly Initial Claims – Week 14

Total aggregated UI claims for the first 14 weeks of each year as reported to ETA.



Regular UI Claims

– Reference Week (12th of the month) Input to LAUS Unemployment Rate Model
Declines over the month - and over the year

	2009	2013	2014	2015	2016	2017	2018	2019	OTM Change	OTY Change
JANUARY	150,888	63,223	49,377	41,333	36,555	33,137	24,968	21,808	5,115	(3,160)
FEBRUARY	154,388	60,183	52,316	39,282	36,909	32,463	25,879	23,992	2,184	(1,887)
MARCH	157,257	54,578	45,928	35,755	32,439	32,141	21,171	22,283	(1,709)	1,112
APRIL	143,842	48,548	39,717	25,597	23,895	21,998	17,618			
MAY	141,174	42,997	32,460	22,807	22,300	19,431	14,774			
JUNE	136,670	41,722	29,524	22,030	22,025	16,722	14,653			
JULY	121,336	44,597	30,845	22,341	22,326	15,775	15,098			
AUGUST	103,509	39,998	26,061	21,472	20,737	15,692	13,959			
SEPTEMBER	92,680	39,563	23,685	20,941	19,372	14,334	12,981			
OCTOBER	86,275	37,778	23,768	19,917	19,143	14,266	13,083			
NOVEMBER	82,451	38,517	25,315	21,199	19,547	14,347	15,499			
DECEMBER	91,814	42,484	30,982	26,249	24,599	17,345	16,693			

*Without earnings – Reference week claims

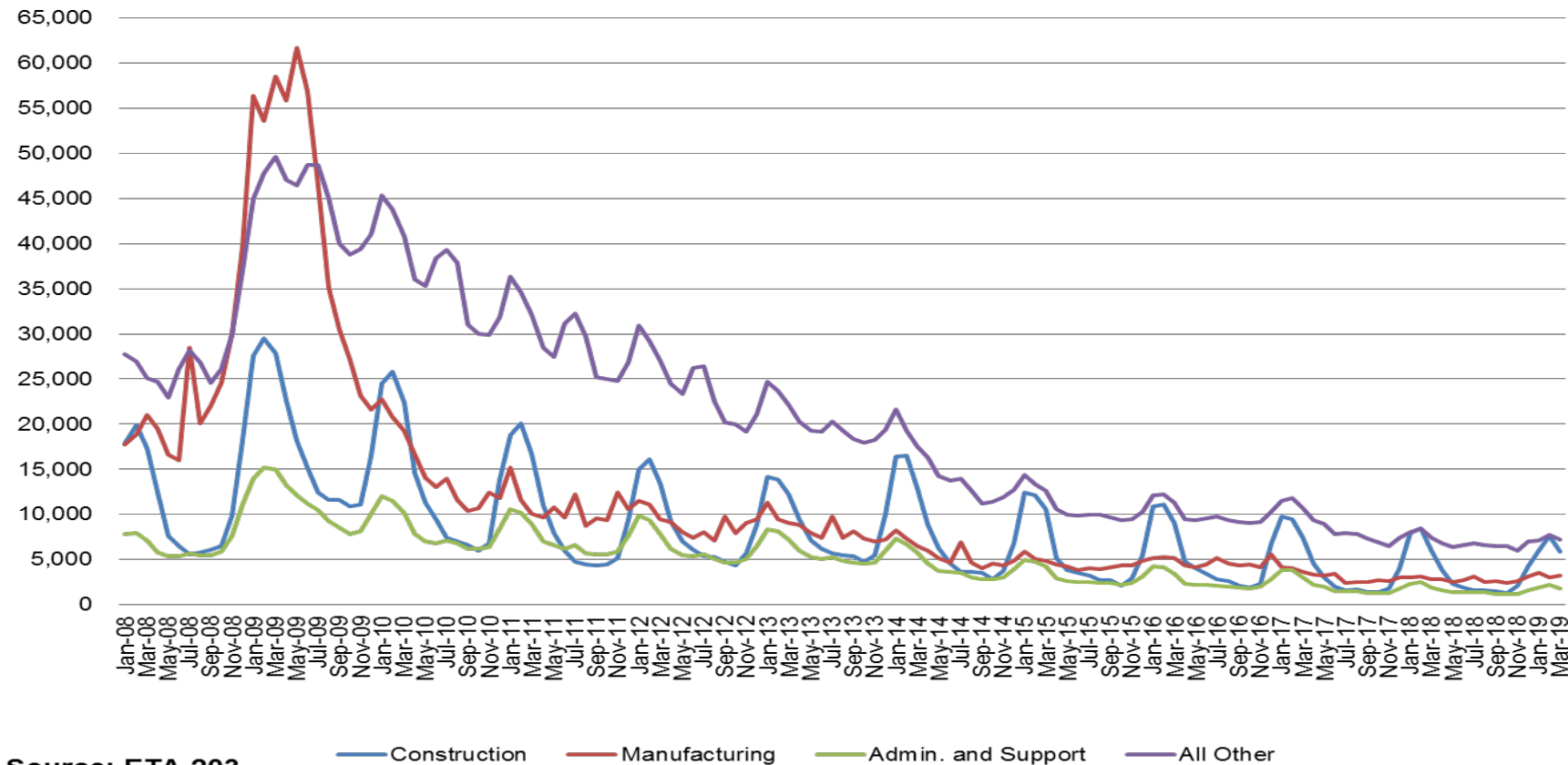


Regular UI Claims by Industry

– Reference week of each month

Regular UI Claims by Industry

For the Reference Week of Each Month



Source: ETA 203

Indiana: Not in Labor Force by Gender and Age

April 2018 - March 2019

Current Population Survey, Bureau of Labor Statistics (in 1000s)

	Total	Age			Sex	
		16 to 24 years	25 to 54 years	55 years and over	Men	Women
	Indiana					
Total not in the labor force	1,799.3	288.8	407.0	1,103.5	700.8	1,098.5
Do not want a job now	1,689.6	251.1	368.4	1,070.1	651.9	1,037.7
Want a job	109.7	37.7	38.6	33.4	48.9	60.8
Did not search for work in previous year	75.8	24.1	24.1	27.6	31.5	44.3
Searched for work in previous year	33.9	13.6	14.5	5.8	17.3	16.6
Not available to work now	8.3	3.3	3.6	1.3	3.5	4.8
Available to work now	25.6	10.2	10.9	4.5	13.9	11.8
Reason not currently looking:						
Discouragement over job prospects	5.5	2.6	2.1	0.8	3.5	2.1
Reasons other than discouragement	20.1	7.6	8.7	3.7	10.4	9.7

Indiana: Labor Force by Gender and Age

April 2018 - March 2019

Current Population Survey, Bureau of Labor Statistics (in 1000s)

	Unemployment rate	Civilian Labor Force participation rate
Male, All Races		
Age 16-19	17.1	45.2
Age 20-24	5.2	83.8
Age 25-34	3.5	91.0
Age 35-44	2.4	93.0
Age 45-54	2.8	89.4
Age 55-64	2.0	73.8
Age 65+	3.6	25.4
Female, All Races		
Age 16-19	11.6	41.7
Age 20-24	6.5	77.6
Age 25-34	3.5	75.9
Age 35-44	3.3	77.3
Age 45-54	3.3	76.5
Age 55-64	1.7	62.6
Age 65+	4.0	14.2

Source: Table a. Employment status of the civilian non-institutional population by sex, age, race, and Hispanic origin, March 2018 - February 2019 (based on CPS) (Numbers in thousands)



Indiana: Labor Force by Gender and Age

*April 2018 - March 2019
Current Population Survey, Bureau
of Labor Statistics (in 1000s)*

	Unemployment Rate	Civilian Labor Force participation rate
Both Sexes		
All Races		
Age 16+	4.2	65.5
Age 16-19	19.2	43.6
Age 20+	3.7	67.2
White		
Age 16+	3.7	65.7
Age 16-19	17.5	45.4
Age 20+	3.2	67.0
Black		
Age 16+	10.2	64.8
Age 16-19	49.2	36.5
Age 20+	8.8	67.6
Hispanic		
Age 16+	4.4	73.2
Age 16-19	20.6	55.6
Age 20+	3.8	74.9
Male, All Races		
Age 16+	4.4	72.4
Age 20+	3.7	74.6
Female, All Races		
Age 16+	4.6	59.1
Age 20+	4.3	60.2
Male, White		
Age 16+	3.9	72.7
Age 20+	3.3	74.5
Female, White		
Age 16+	4.0	58.9
Age 20+	3.7	60.0

Source: Table a. Employment status of the civilian non-institutional population by sex, age, race, and Hispanic origin, March 2018 - February 2019 (based on CPS)
(Numbers in thousands)

