



INDIANA
WORKFORCE
DEVELOPMENT
AND ITS **WorkOne** CENTERS

Indiana's Employment and Labor Force Estimates July 2015

08/19/2015



Key Points

- July 2015 preliminary BLS employment estimates for Indiana show gains of 4,800 over the month. Private sector employment for Indiana now stands at 2,614,800, a new peak level 2,200 above the prior private sector peak in March of 2000. This number could be revised as more sample data is reported during next months release.
- June 2015 final estimates showed an upward revision to private sector employment of 2,700, previously reported losses of 3,800 were revised to losses of 1,100 over the month.
- Private sector gains in July were driven by an increase of 6,100 in professional and business services (including employment services), and gains of 4,400 in private health care and social assistance.
- Manufacturing declined by 1,200 over the month, leisure and hospitality declined by 1,600, and construction was down by 4,400 in July. This is only the 5th month of manufacturing decline over the month since January 2013.
- Average weekly hours for Indiana manufacturing workers declined by 0.8 from 42.2 to 41.4 in July. Nationally, average weekly hours declined by 0.5 to 41.4. This could indicate some softness in manufacturing, but it is also likely the result of lessening work hours during July as this has been historically a time for temporary shutdowns in manufacturing.
- The unemployment rate in Indiana declined from 4.9% to 4.7% in July, the last time the rate was this low was November of 2007.



Key Points

LAUS Household Survey:

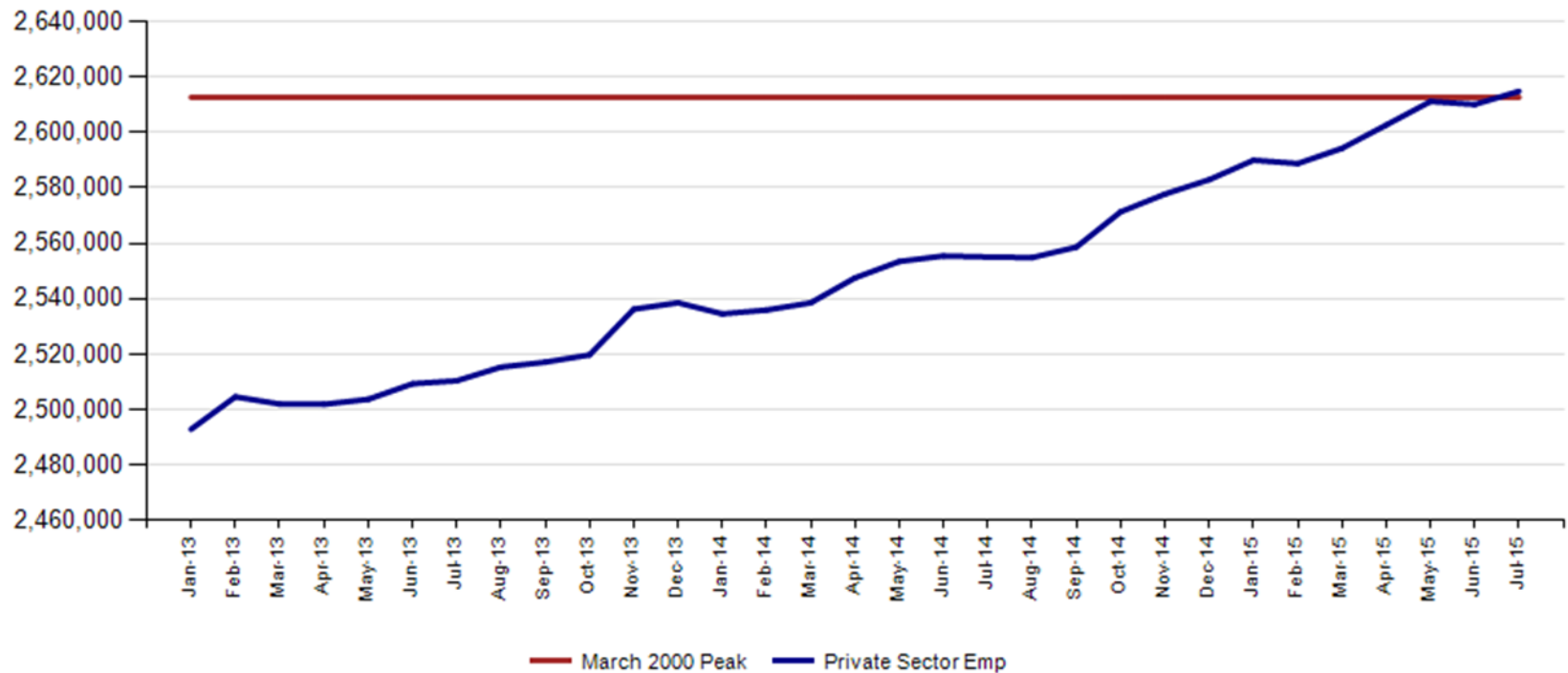
- Indiana's rate of 4.7% in July is down (-1.1%) from July 2014. The national rate was unchanged at 5.3% in July.
- Indiana's LAUS employment estimates rose by 13,600, and unemployment declined by 3,900; this led to an overall increase of 9,700 in the labor force for July. Indiana's labor force participation rate increased by 0.2% to 63.5% for July. This remains above the US labor force participation rate of 62.6%.
- Indiana's labor force is up 23,000 over the year, and has gained 76,000 since January 2013.

CES Payroll/ Establishment Survey:

- Indiana's private sector employment grew by 4,800 in July, (0.2%) and is up 59,800 from a year ago (2.3%). US private employment grew by 210,000 over the month, a rate of (0.2%). Nationally, private sector employment is up by 2.4% over the year.
- Since January 2013 Indiana private employment has grown by 121,900 (4.9%).
- Average hourly earnings for all private employees in Indiana were \$22.68 in July, this was up by \$0.03 from June, shows an increase of \$0.01 cents from last July. Nationally average hourly earnings for all private employees rose by 5 cents to \$24.99. Over the year, average hourly earnings have risen by 2.1 percent nationally.



Indiana Private Sector Employment



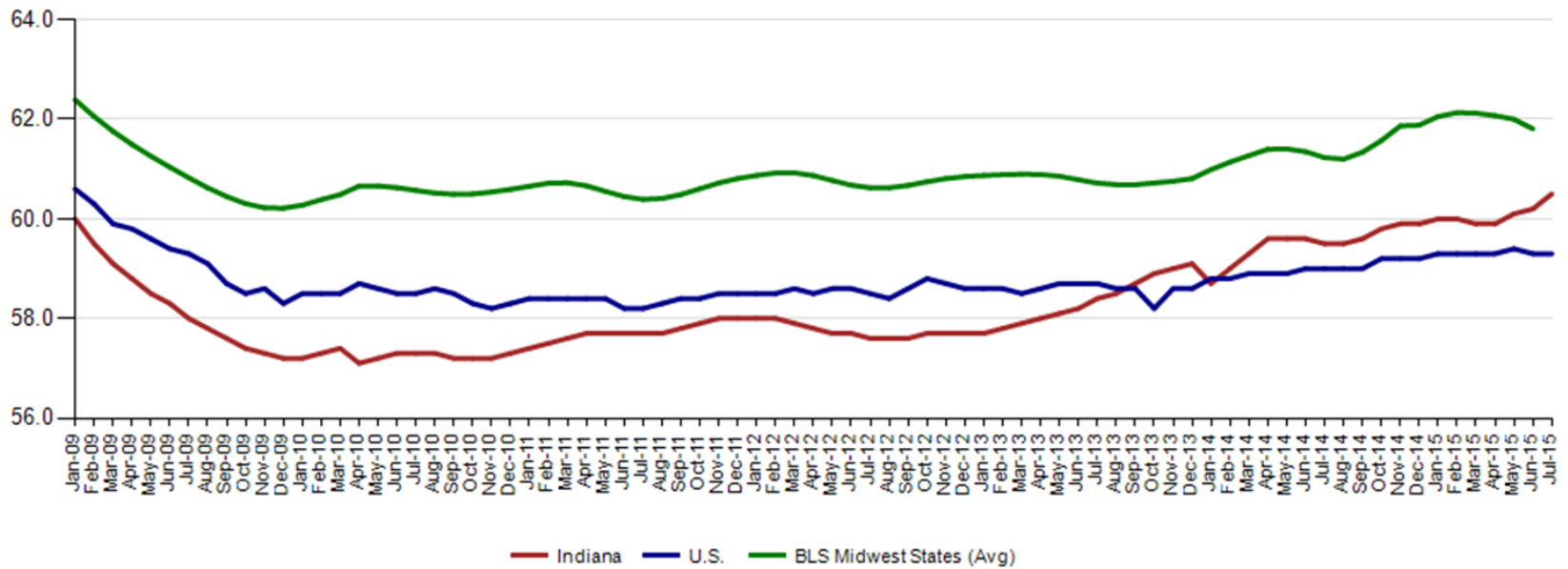


Revisions to June 2015 Estimates

INDUSTRY TITLE	May	June Prel	June Rev	Revision	Chg from May	Prel Chg from May
Total Nonfarm	3040.3	3044.2	3042.9	-1.3	2.6	3.9
Total Private	2611.1	2607.3	2610.0	2.7	-1.1	-3.8
Construction	122.7	122.9	122.6	-0.3	-0.1	0.2
Manufacturing	519.7	521.3	520.4	-0.9	0.7	1.6
Trade, Transportation, and Utilities	599.1	595.5	596.7	1.2	-2.4	-3.6
Wholesale Trade	121.3	120.3	121.0	0.7	-0.3	-1.0
Retail Trade	329.7	326.9	327.6	0.7	-2.1	-2.8
Transportation, Warehousing, and Utilities	148.1	148.3	148.1	-0.2	0.0	0.2
Information	35.2	35.8	35.7	-0.1	0.5	0.6
Financial Activities	128.0	127.4	128.0	0.6	0.0	-0.6
Professional and Business Services	323.8	323.9	324.1	0.2	0.3	0.1
Professional, Scientific, and Technical Services	107.6	108.9	109.1	0.2	1.5	1.3
Management of Companies and Enterprises	33.5	33.4	33.6	0.2	0.1	-0.1
Admin & Support & Waste Mgmt & Remediation Services	182.7	181.6	181.4	-0.2	-1.3	-1.1
Education and Health Services	446.8	445.9	447.2	1.3	0.4	-0.9
Educational Services	65.9	62.4	64.1	1.7	-1.8	-3.5
Health Care and Social Assistance	380.9	383.5	383.1	-0.4	2.2	2.6
Leisure and Hospitality	299.8	301.1	301.4	0.3	1.6	1.3
Arts, Entertainment, and Recreation	38.1	39.1	38.4	-0.7	0.3	1.0
Accommodation and Food Services	261.7	262.0	263.0	1.0	1.3	0.3
Government	429.2	436.9	432.9	-4.0	3.7	7.7



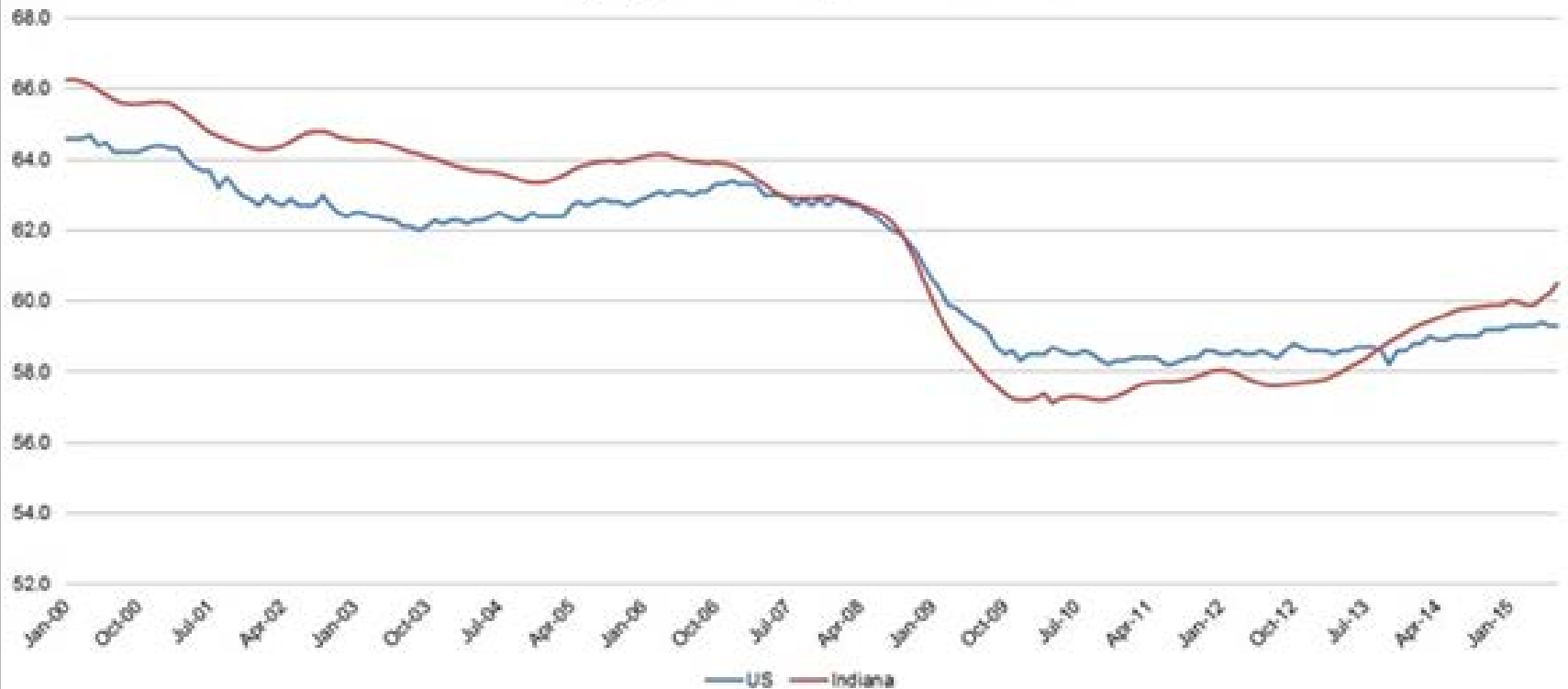
Employment to Population Ratio (seasonally adjusted)



Source: Local Area Unemployment Statistics

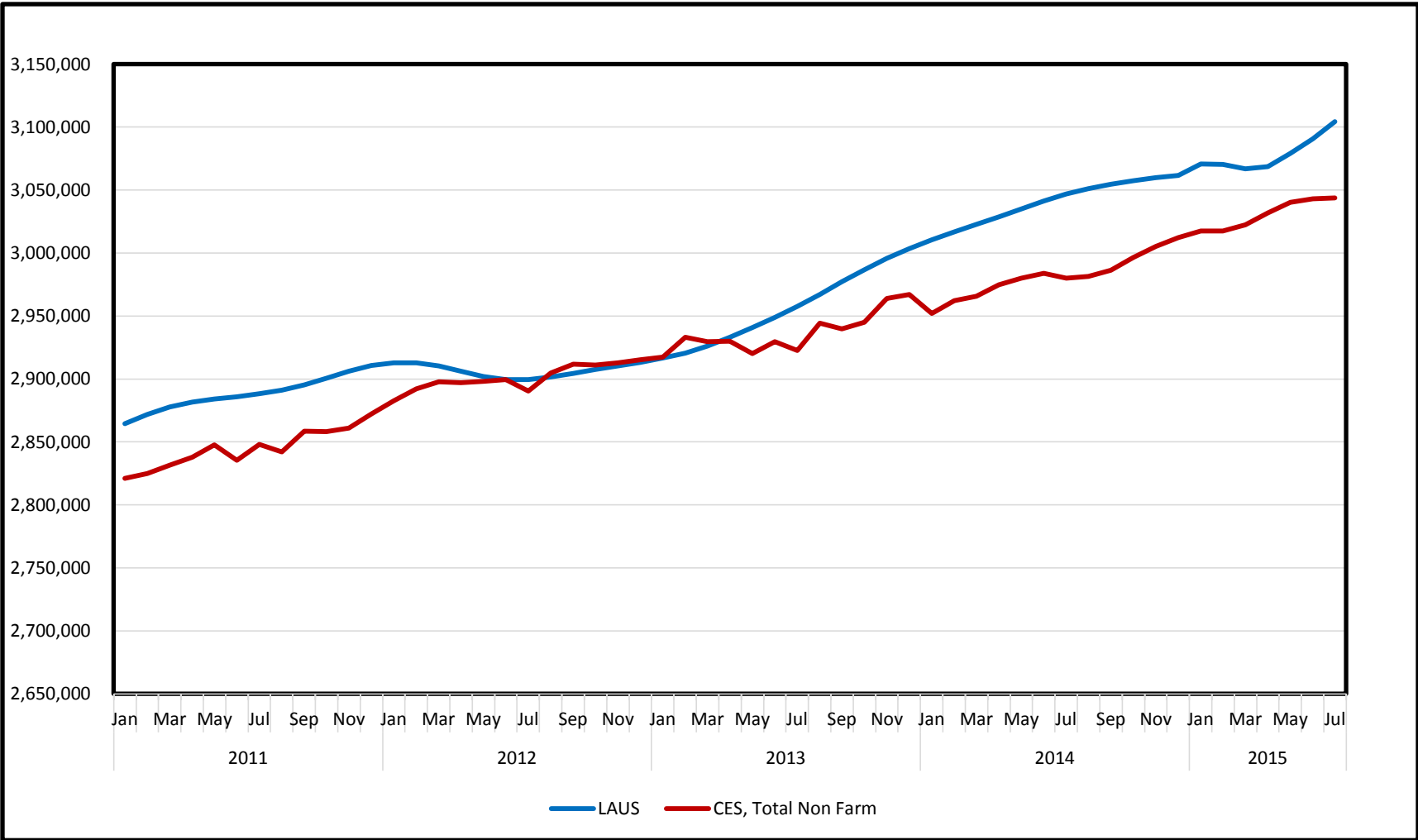


Employment to Population Ratio





INDIANA
WORKFORCE
DEVELOPMENT
AND ITS **WorkOne** CENTERS



Current Employment Statistics (CES) and Local Area Unemployment Statistics (LAUS) Point-in-Time Comparison

	March 2000 (Peak)	July 2009 (Trough)	June 2015	July 2015	Change Peak	Change Trough	Change Prev. Month
CES Employed	3,017.2	2,757.7	3,042.9	3,043.8	26.6	286.1	0.9
LAUS Employed	3,039.1	2,847.9	3,090.8	3,104.3	65.2	256.4	13.6
LAUS Unemployed	102.9	340.8	157.9	154.0	51.1	-186.8	-3.9
Labor Force	3,142.1	3,188.7	3,248.6	3,258.3	116.2	69.6	9.7
Unemployment Rate	3.3	10.7	4.9	4.7	1.4	-6.0	-0.2

(LAUS components may not sum exactly due to rounding.)



IN Employment Change Over the Month, Year-to-Date and Over the Year (seasonally adjusted)

Industry	July 2014	December 2014	June 2015	July 2015	Month Change	Y-to-D Change	Y-to-Y Change
Private Educational & Health Services	438.7	441.5	447.2	451.6	4.4	10.1	12.9
.....Private Educational Services	64.3	65.5	64.1	64.1	0.0	-1.4	-0.2
.....Health Care & Social Assistance	374.4	376.0	383.1	387.5	4.4	11.5	13.1
Manufacturing	507.4	514.6	520.4	519.2	-1.2	4.6	11.8
Professional & Business Services	318.0	328.2	324.1	330.2	6.1	2.0	12.2
Financial Activities	128.0	130.9	128.0	129.5	1.5	-1.4	1.5
Construction	123.3	122.9	122.6	118.2	-4.4	-4.7	-5.1
Leisure and Hospitality	294.8	295.0	301.4	299.8	-1.6	4.8	5.0
Trade, Transportation & Utilities	575.7	581.5	596.7	596.8	0.1	15.3	21.1
.....Trade	437.4	440.1	448.6	448.5	-0.1	8.4	11.1
.....Transportation, Warehousing & Utilities	138.3	141.4	148.1	148.3	0.2	6.9	10.0
All Other	169.1	168.3	169.6	169.5	-0.1	1.2	0.4
Total Private	2,555.0	2,582.9	2,610.0	2,614.8	4.8	31.9	59.8
Government (Includes Public Schools & Hospitals)	424.9	429.2	432.9	429.0	-3.9	-0.2	4.1
Total Nonfarm	2,979.9	3,012.1	3,042.9	3,043.8	0.9	31.7	63.9
United States Total Private	117,295.0	118,690.0	119,938.0	120,148.0	210.0	1,458.0	2,853.0

Source: Current Employment Statistics, seasonally adjusted



IN Statewide Estimates (seasonally adjusted) -- July 2015

Supersector	Private Empl. Peak March 2000	Private Empl. Trough July 2009	June 2015	July 2015	Change Since Peak	Change Since Trough	Month to Month Change
Private Educational & Health Services	330.1	411.1	447.2	451.6	121.5	40.5	4.4
.....Private Educational Services	52.2	63.3	64.1	64.1	11.9	0.8	0.0
.....Health Care & Social Assistance	277.9	347.8	383.1	387.5	109.6	39.7	4.4
Manufacturing	671.1	427.9	520.4	519.2	-151.9	91.3	-1.2
Professional & Business Services	260.5	255.9	324.1	330.2	69.7	74.3	6.1
Financial Activities	145.7	130.7	128.0	129.5	-16.2	-1.2	1.5
Construction	154.1	116.5	122.6	118.2	-35.9	1.7	-4.4
Leisure and Hospitality	267.2	276.8	301.4	299.8	32.6	23.0	-1.6
Trade, Transportation & Utilities	617.5	545.7	596.7	596.8	-20.7	51.1	0.1
.....Trade	485.1	421.6	448.6	448.5	-36.6	26.9	-0.1
.....Transportation, Warehousing & Utilities	132.4	124.1	148.1	148.3	15.9	24.2	0.2
All Other	166.4	158.6	169.6	169.5	3.1	10.9	-0.1
Total Private	2,612.6	2,323.2	2,610.0	2,614.8	2.2	291.6	4.8
Government (Includes Public Schools & Hospitals)	404.6	434.5	432.9	429.0	24.4	-5.5	-3.9
Total Nonfarm	3,017.2	2,757.7	3,042.9	3,043.8	26.6	286.1	0.9
United States Total Private	110,873.0	108,098.0	119,938.0	120,148.0	9,275.0	12,050.0	210.0

Source: Current Employment Statistics, seasonally adjusted



IN Statewide Estimates (seasonally adjusted) -- July 2015

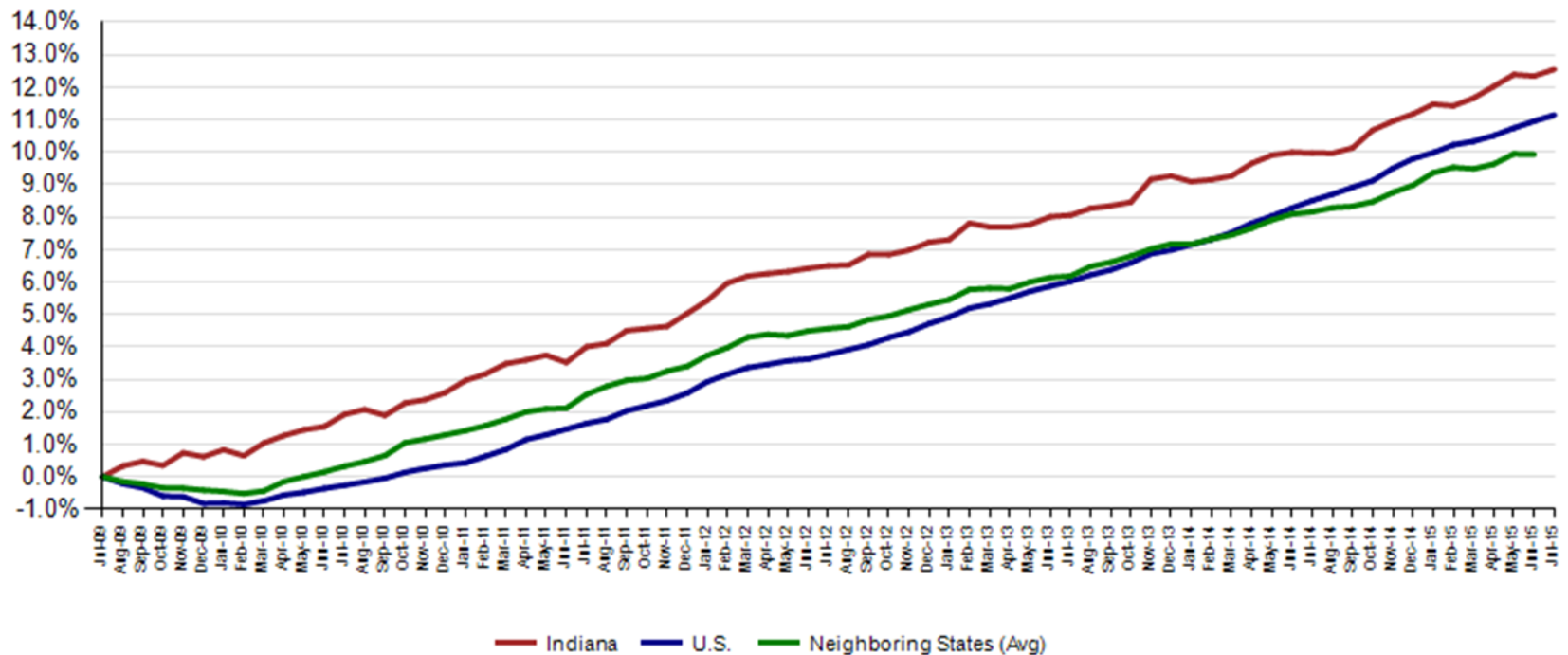
Supersector	Private Empl. Peak March 2000	Private Empl. Trough July 2009	June 2015	July 2015	% Chg. Since Peak	% Chg. Since Trough	% Month to Month Change
Private Educational & Health Services	330.1	411.1	447.2	451.6	36.8%	9.9%	1.0%
.....Private Educational Services	52.2	63.3	64.1	64.1	22.8%	1.3%	0.0%
.....Health Care & Social Assistance	277.9	347.8	383.1	387.5	39.4%	11.4%	1.1%
Manufacturing	671.1	427.9	520.4	519.2	-22.6%	21.3%	-0.2%
Professional & Business Services	260.5	255.9	324.1	330.2	26.8%	29.0%	1.9%
Financial Activities	145.7	130.7	128.0	129.5	-11.1%	-0.9%	1.2%
Construction	154.1	116.5	122.6	118.2	-23.3%	1.5%	-3.6%
Leisure and Hospitality	267.2	276.8	301.4	299.8	12.2%	8.3%	-0.5%
Trade, Transportation & Utilities	617.5	545.7	596.7	596.8	-3.4%	9.4%	0.0%
.....Trade	485.1	421.6	448.6	448.5	-7.5%	6.4%	0.0%
.....Transportation, Warehousing & Utilities	132.4	124.1	148.1	148.3	12.0%	19.5%	0.1%
All Other	166.4	158.6	169.6	169.5	1.9%	6.9%	-0.1%
Total Private	2,612.6	2,323.2	2,610.0	2,614.8	0.1%	12.6%	0.2%
Government (Includes Public Schools & Hospitals)	404.6	434.5	432.9	429.0	6.0%	-1.3%	-0.9%
Total Nonfarm	3,017.2	2,757.7	3,042.9	3,043.8	0.9%	10.4%	0.0%
United States Total Private	110,873.0	108,098.0	119,938.0	120,148.0	8.4%	11.1%	0.2%



IN Employment Change Compared to the U.S.

Industry	Indiana Month to Month	U.S. Month to Month	Indiana vs U.S. Change	Indiana Year-to- Date	U.S. Year-to- Date	Indiana vs U.S. Change	Indiana Year-to- Year	U.S. Year-to- Year	Indiana vs U.S. Change
Private Educational & Health Services	1.0%	0.2%	OVER	2.3%	1.6%	OVER	2.9%	2.7%	OVER
.....Private Educational Services	0.0%	0.2%	UNDER	-2.1%	0.7%	UNDER	-0.3%	1.3%	UNDER
.....Health Care & Social Assistance	1.1%	0.2%	OVER	3.1%	1.8%	OVER	3.5%	2.9%	OVER
Manufacturing	-0.2%	0.1%	UNDER	0.9%	0.4%	OVER	2.3%	1.3%	OVER
Professional & Business Services	1.9%	0.2%	OVER	0.6%	1.8%	UNDER	3.8%	3.5%	OVER
Financial Activities	1.2%	0.2%	OVER	-1.1%	1.1%	UNDER	1.2%	2.0%	UNDER
Construction	-3.6%	0.1%	UNDER	-3.8%	1.7%	UNDER	-4.1%	3.8%	UNDER
Leisure and Hospitality	-0.5%	0.2%	UNDER	1.6%	1.4%	OVER	1.7%	3.0%	UNDER
Trade, Transportation & Utilities	0.0%	0.2%	UNDER	2.6%	1.2%	OVER	3.7%	2.1%	OVER
.....Trade	0.0%	0.2%	UNDER	1.9%	1.2%	OVER	2.5%	1.9%	OVER
.....Transportation, Warehousing & Utils	0.1%	0.3%	UNDER	4.9%	1.1%	OVER	7.2%	3.0%	OVER
All Other	-0.1%	0.1%	UNDER	0.7%	-0.1%	OVER	0.2%	0.7%	UNDER
Total Private	0.2%	0.2%	OVER	1.2%	1.2%	OVER	2.3%	2.4%	UNDER
Government (Includes Public Schools & Hospitals)	-0.9%	0.0%	UNDER	0.0%	0.1%	UNDER	1.0%	0.3%	OVER
Total Nonfarm	0.0%	0.2%	UNDER	1.1%	1.1%	OVER	2.1%	2.1%	OVER

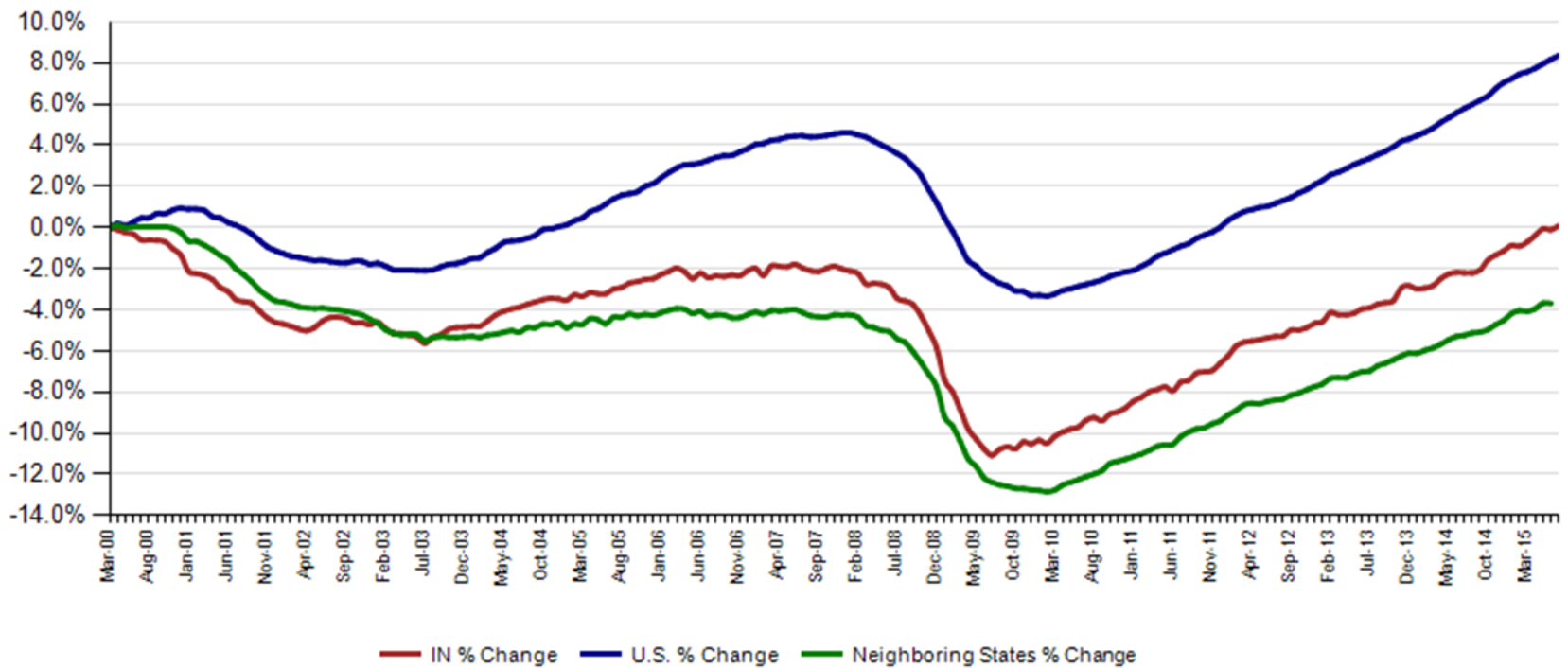
Private Sector Job Growth Since the Low Point of Employment in Indiana



Source: Current Employment Statistics, seasonally adjusted



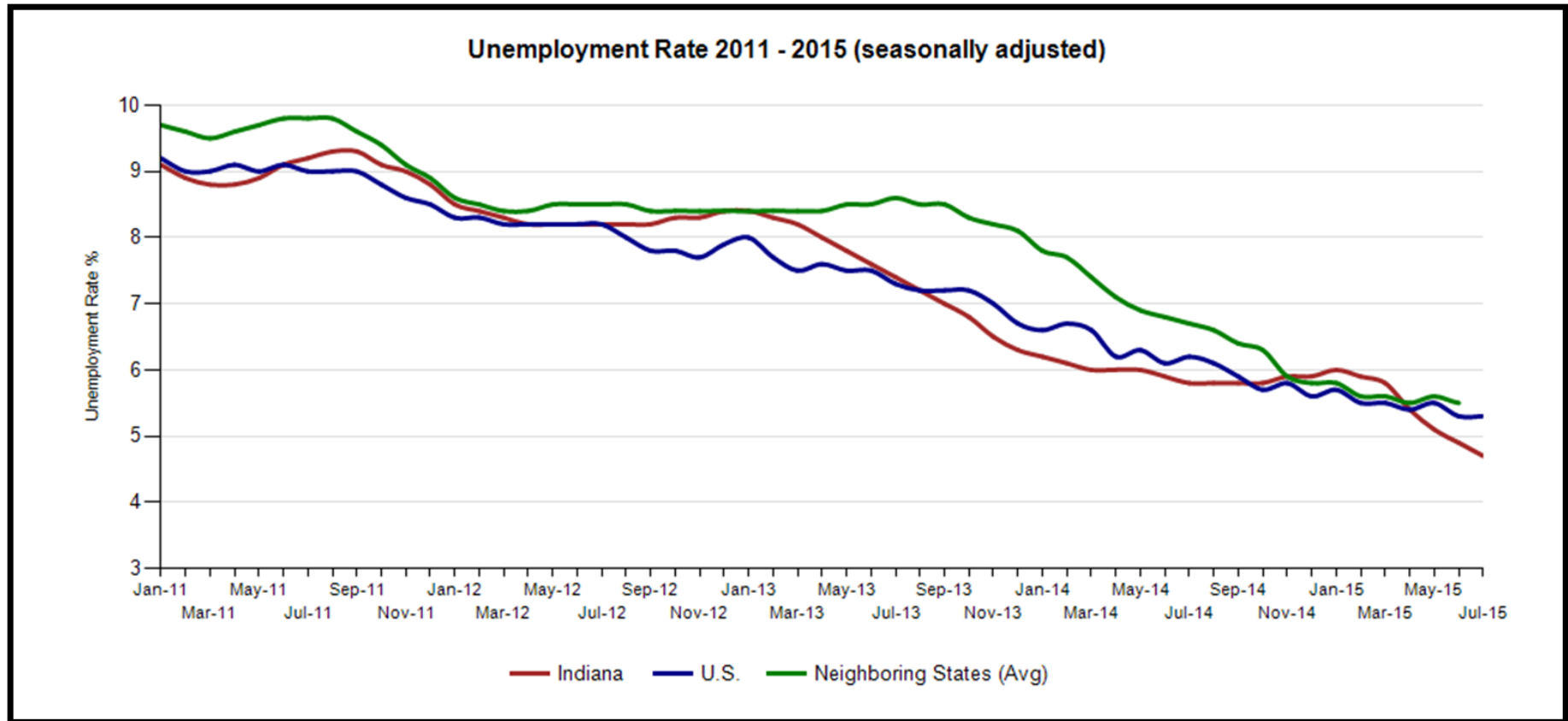
Private Sector Job Growth Since the Peak of Employment in Indiana



Source: Current Employment Statistics, seasonally adjusted

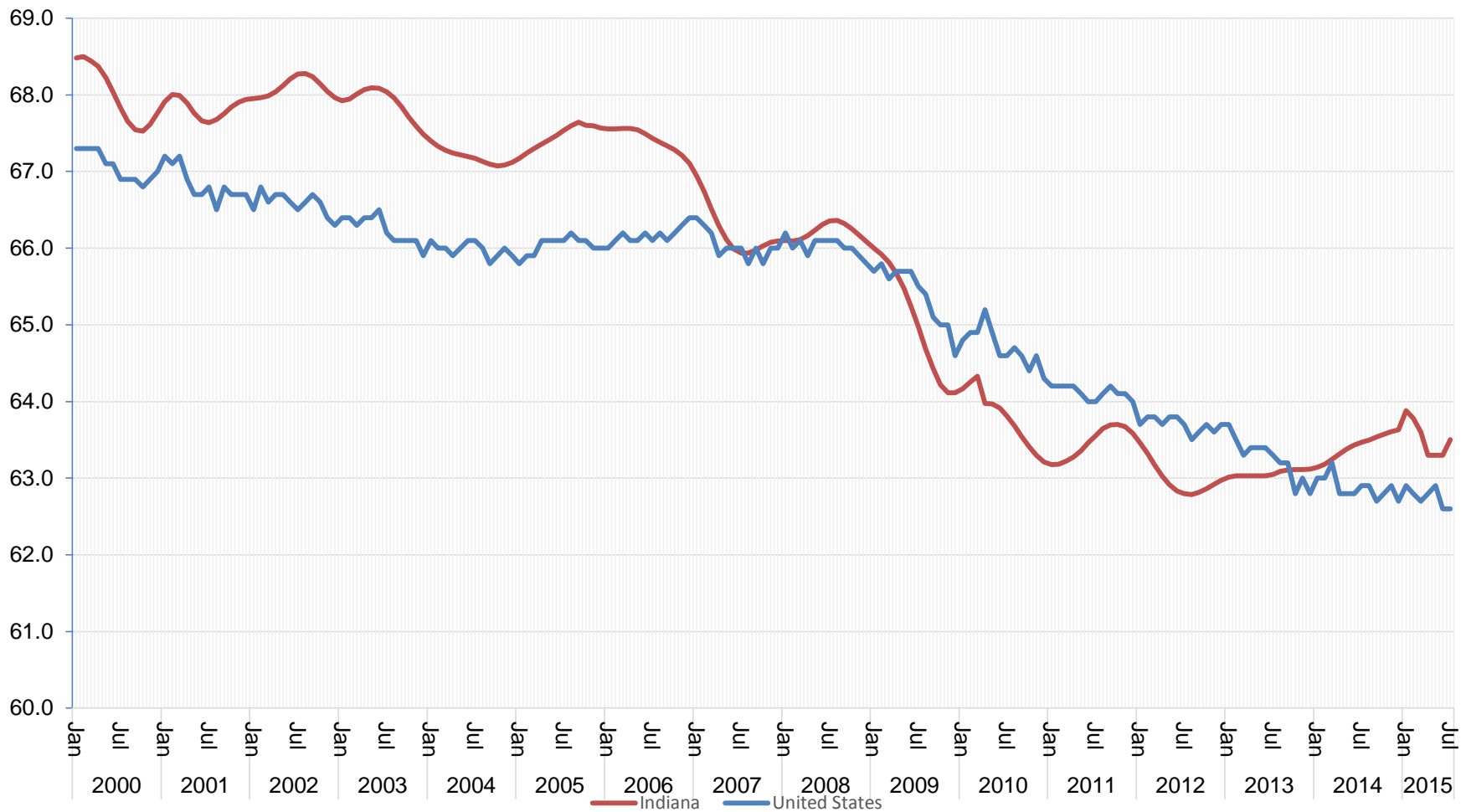


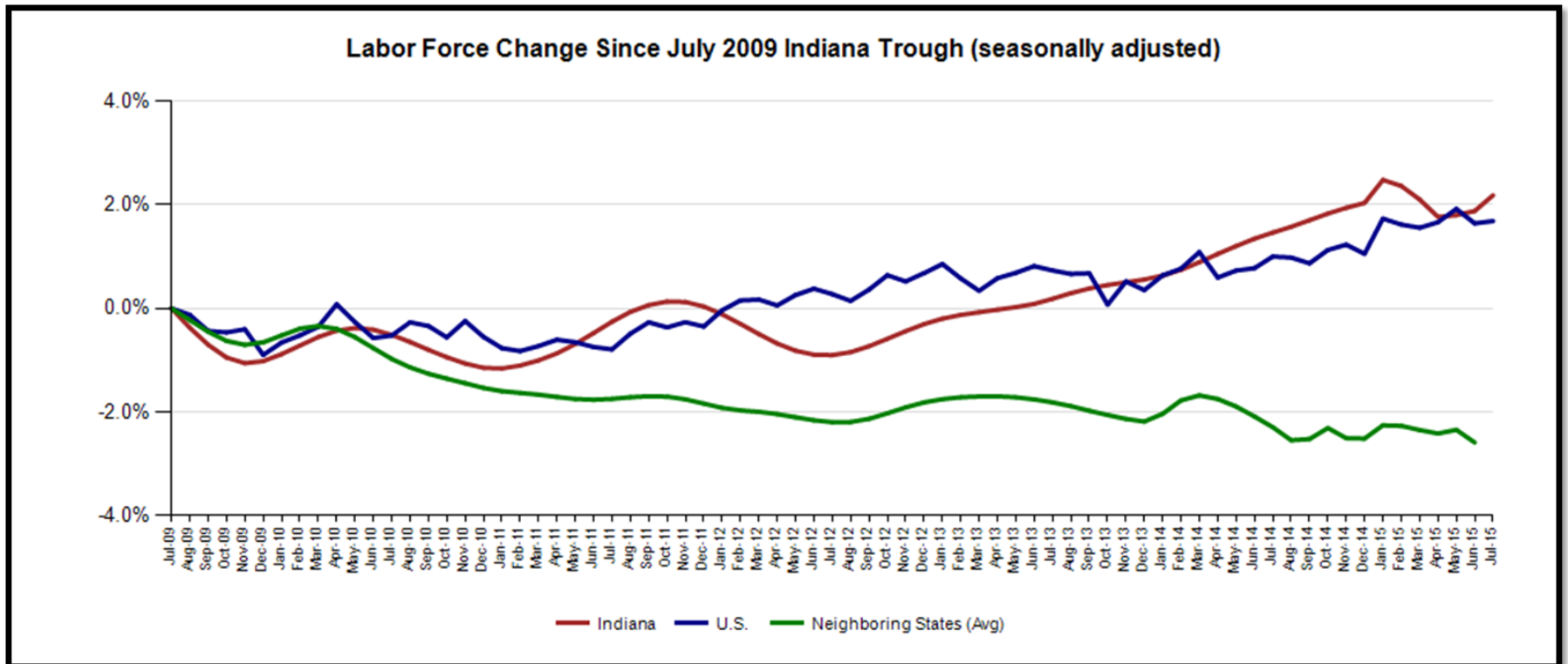
Indiana's unemployment stands at 4.7% in July. This is below the national rate of 5.3% for July, and our neighboring states rates through June.





Labor Force Participation, Indiana and the U.S.

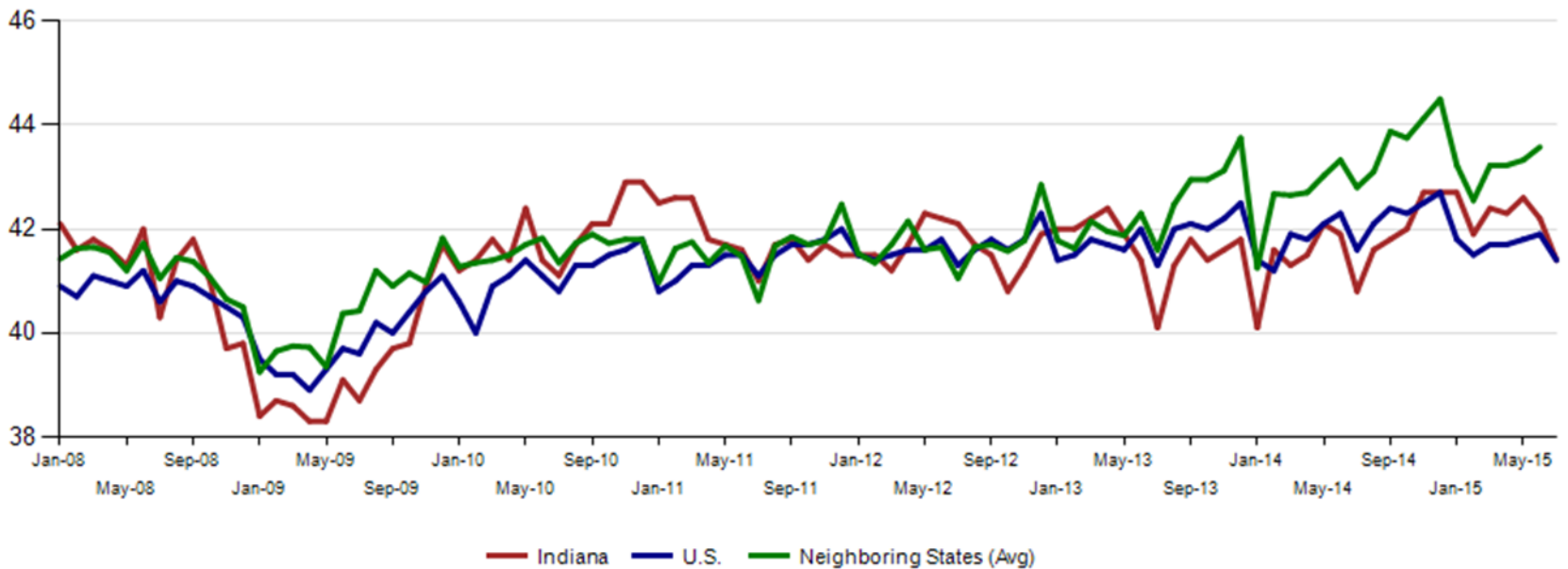




Source: Local Area Unemployment Statistics



Avg. Weekly Manufacturing Production Hours (non seasonally adjusted)



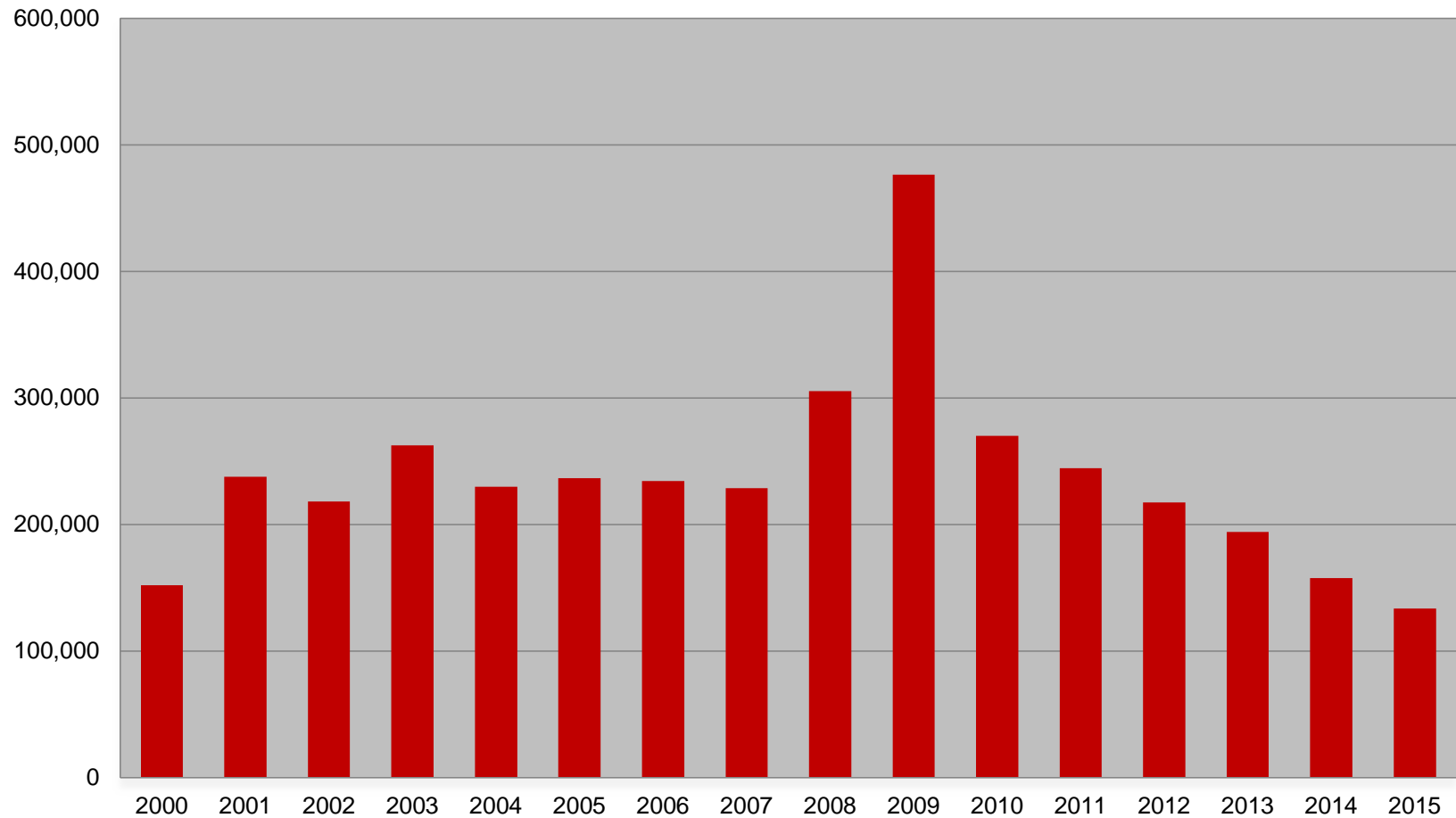
Source: Current Employment Statistics, not seasonally adjusted

MSA Estimates:
2000 And Over-the-Year Change
 Ranked on percentage change over-the-year (no seasonal adjustment)

IN Metropolitan Area Employment Estimates									
MSA	July 2000	July 2014	June 2015	July 2015	July 2015 Change	Change since 2000	% Chg since 2000	Annual Change	Annual % Change
Elkhart-Goshen	127,000	121,700	129,500	127,500	-2,000	500	0.4%	5,800	4.8%
Fort Wayne	214,700	205,800	216,100	212,900	-3,200	-1,800	-0.8%	7,100	3.4%
Indianapolis-Carmel-Anderson	889,800	985,900	1,026,600	1,016,700	-9,900	126,900	14.3%	30,800	3.1%
Muncie	55,800	48,200	49,900	49,600	-300	-6,200	-11.1%	1,400	2.9%
Lafayette-West Lafayette	88,600	93,400	97,600	96,000	-1,600	7,400	8.4%	2,600	2.8%
Evansville	160,800	155,100	160,000	159,100	-900	-1,700	-1.1%	4,000	2.6%
South Bend	148,800	130,300	136,500	133,500	-3,000	-15,300	-10.3%	3,200	2.5%
Columbus	44,100	50,300	51,500	51,500	0	7,400	16.8%	1,200	2.4%
Gary Division	278,300	269,800	279,500	274,500	-5,000	-3,800	-1.4%	4,700	1.7%
Michigan City	49,200	41,600	42,900	42,100	-800	-7,100	-14.4%	500	1.2%
Kokomo	49,800	40,100	40,700	40,200	-500	-9,600	-19.3%	100	0.2%
Bloomington	68,600	70,700	71,300	70,700	-600	2,100	3.1%	0	0.0%
Terre Haute	75,900	68,200	69,200	68,200	-1,000	-7,700	-10.1%	0	0.0%



Weekly Initial Claims – 32 weeks aggregate





Regular UI Claims – Reference Week (12th of the month) Input to LAUS Unemployment Rate Model Declines over the month - and over the year

Without earnings – Reference week claims

	2006	2007	2008	2009	2010	2011	2012	2013	2014	2015	OTM Change	OTY Change
JANUARY	65,898	71,296	75,294	150,888	105,910	84,706	71,042	63,223	49,377	41,333	10,351	(8,044)
FEBRUARY	67,347	75,432	78,068	154,388	103,432	80,852	69,570	60,183	52,316	39,282	(2,051)	(13,034)
MARCH	59,716	64,936	74,759	157,257	93,469	71,696	60,752	54,578	45,928	35,755	(3,527)	(10,173)
APRIL	48,103	53,325	64,948	143,842	74,481	59,036	51,652	48,548	39,717	25,597	(10,158)	(14,120)
MAY	46,779	46,002	55,480	141,174	66,779	54,680	46,328	42,997	32,460	22,807	(2,790)	(9,653)
JUNE	45,533	46,350	57,228	136,670	67,996	55,021	46,820	41,722	29,524	22,030	(777)	(7,494)
JULY	53,424	51,141	72,032	121,336	69,447	58,031	47,268	44,597	30,845	22,238	208	(8,607)
AUGUST	45,021	43,887	61,985	103,509	62,976	51,710	42,134	39,998	26,061			
SEPTEMBER	41,247	42,500	61,548	92,680	58,280	46,824	41,955	39,563	23,685			
OCTOBER	42,487	42,313	67,306	86,275	58,317	46,909	39,467	37,778	23,768			
NOVEMBER	43,868	45,362	81,466	82,451	58,846	51,201	41,018	38,517	25,315			
DECEMBER	53,566	54,201	109,651	91,814	65,279	55,104	46,371	42,484	30,982			