

Indiana's Employment and Labor Force Estimates January 2020

03/11/2020

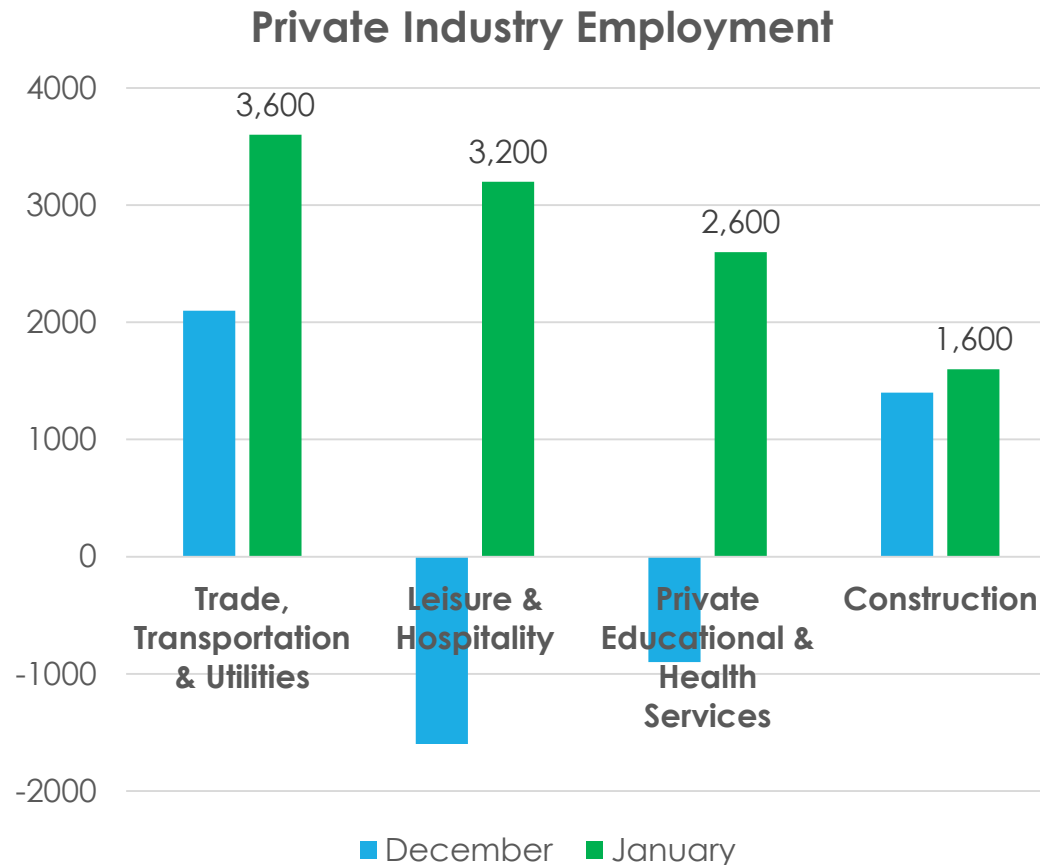
Key Points

- **Indiana's unemployment rate stands at 3.1% in January 2020. The U.S. is at 3.6%.**
- **Indiana's rate is 0.5% lower than it was over the year from January 2019.**
- Indiana's Labor Force increased over the month by 3,749; due to an increase in residence employment of 4,626 and a decrease in unemployment of 877.
- Indiana's Labor Force has decreased 11,702 over the year.
- Indiana's Labor Force Participation Rate is at 64.4%. This is above the U.S. Labor Force Participation Rate of 63.4%.

Key Points: January 2020

Indiana's Private Employment

- Increased by 8,400 jobs over the month and had loses of 7,400 over the year.
- January private employment = 2,741,900.



Revisions to December 2019 Estimates

| Revisions to December 2019 Estimates | | | | | | |
|---|--------|----------|---------|----------|--------------|------------------|
| INDUSTRY TITLE | Nov | Dec Prel | Dec Rev | Revision | Chg from Nov | Pre Chg from Nov |
| Total Nonfarm | 3164.9 | 3165.5 | 3163.0 | -2.5 | -1.9 | 0.6 |
| Total Private | 2732.5 | 2731.6 | 2733.5 | 1.9 | 1.0 | -0.9 |
| Goods Producing | 696.1 | 696.2 | 693.4 | -2.8 | -2.7 | 0.1 |
| Service-Providing | 2468.8 | 2469.3 | 2469.6 | 0.3 | 0.8 | 0.5 |
| Private Service Providing | 2036.4 | 2035.4 | 2040.1 | 4.7 | 3.7 | -1.0 |
| Construction | 152.5 | 153.9 | 148.0 | -5.9 | -4.5 | 1.4 |
| Manufacturing | 537.4 | 536.1 | 539.5 | 3.4 | 2.1 | -1.3 |
| Trade, Transportation, and Utilities | 592.8 | 594.9 | 598.9 | 4.0 | 6.1 | 2.1 |
| Wholesale Trade | 118.9 | 119.0 | 121.8 | 2.8 | 2.9 | 0.1 |
| Retail Trade | 316.8 | 318.6 | 316.0 | -2.6 | -0.8 | 1.8 |
| Transportation, Warehousing, and Utilities | 157.1 | 157.3 | 161.1 | 3.8 | 4.0 | 0.2 |
| Information | 27.5 | 27.8 | 28.7 | 0.9 | 1.2 | 0.3 |
| Financial Activities | 139.9 | 139.3 | 141.1 | 1.8 | 1.2 | -0.6 |
| Finance and Insurance | 105.1 | 105.0 | 104.8 | -0.2 | -0.3 | -0.1 |
| Real Estate and Rental and Leasing | 34.8 | 34.3 | 36.3 | 2.0 | 1.5 | -0.5 |
| Professional and Business Services | 348.3 | 348.1 | 343.1 | -5.0 | -5.2 | -0.2 |
| Professional, Scientific, and Technical Services | 123.6 | 124.8 | 123.9 | -0.9 | 0.3 | 1.2 |
| Management of Companies and Enterprises | 34.1 | 34.0 | 34.6 | 0.6 | 0.5 | -0.1 |
| Admin & Support & Waste Mgmt & Remediation Services | 190.6 | 189.3 | 184.6 | -4.7 | -6.0 | -1.3 |
| Education and Health Services | 491.6 | 490.7 | 484.1 | -6.6 | -7.5 | -0.9 |
| Educational Services | 64.4 | 63.9 | 63.2 | -0.7 | -1.2 | -0.5 |
| Health Care and Social Assistance | 427.2 | 426.8 | 420.9 | -5.9 | -6.3 | -0.4 |
| Leisure and Hospitality | 305.6 | 304.0 | 309.6 | 5.6 | 4.0 | -1.6 |
| Other Services | 130.7 | 130.6 | 134.6 | 4.0 | 3.9 | -0.1 |
| Government | 432.4 | 433.9 | 429.5 | -4.4 | -2.9 | 1.5 |

Midwestern Sector Employment Change Compared to Indiana

Percentage growth ranking comparison of Midwestern States and selected industry sectors since the Indiana low point. (December data)

| December | TNF | Private | Construction | Manufacturing | Professional & Business | Educational & Health Services |
|-----------|-----|---------|--------------|---------------|-------------------------|-------------------------------|
| Illinois | 34 | 35 | 43 | 31 | 30 | 34 |
| Indiana | 19 | 19 | 16 | 4 | 15 | 27 |
| Kentucky | 25 | 25 | 37 | 9 | 27 | 31 |
| Michigan | 16 | 17 | 9 | 2 | 19 | 49 |
| Minnesota | 24 | 23 | 11 | 26 | 38 | 29 |
| Ohio | 26 | 28 | 26 | 16 | 36 | 38 |
| Wisconsin | 35 | 34 | 19 | 22 | 26 | 42 |

Source: Current Employment Statistics (seasonally adjusted)

Comparing Local Area Unemployment Statistics (LAUS) and Current Employment Statistics (CES)

LAUS (Labor Force by Residence)

This counts people, not jobs, and is...

- An estimate of employment based on where the employee lives, rather than where they work
- Used in calculating the labor force

CES (Employment by Job)

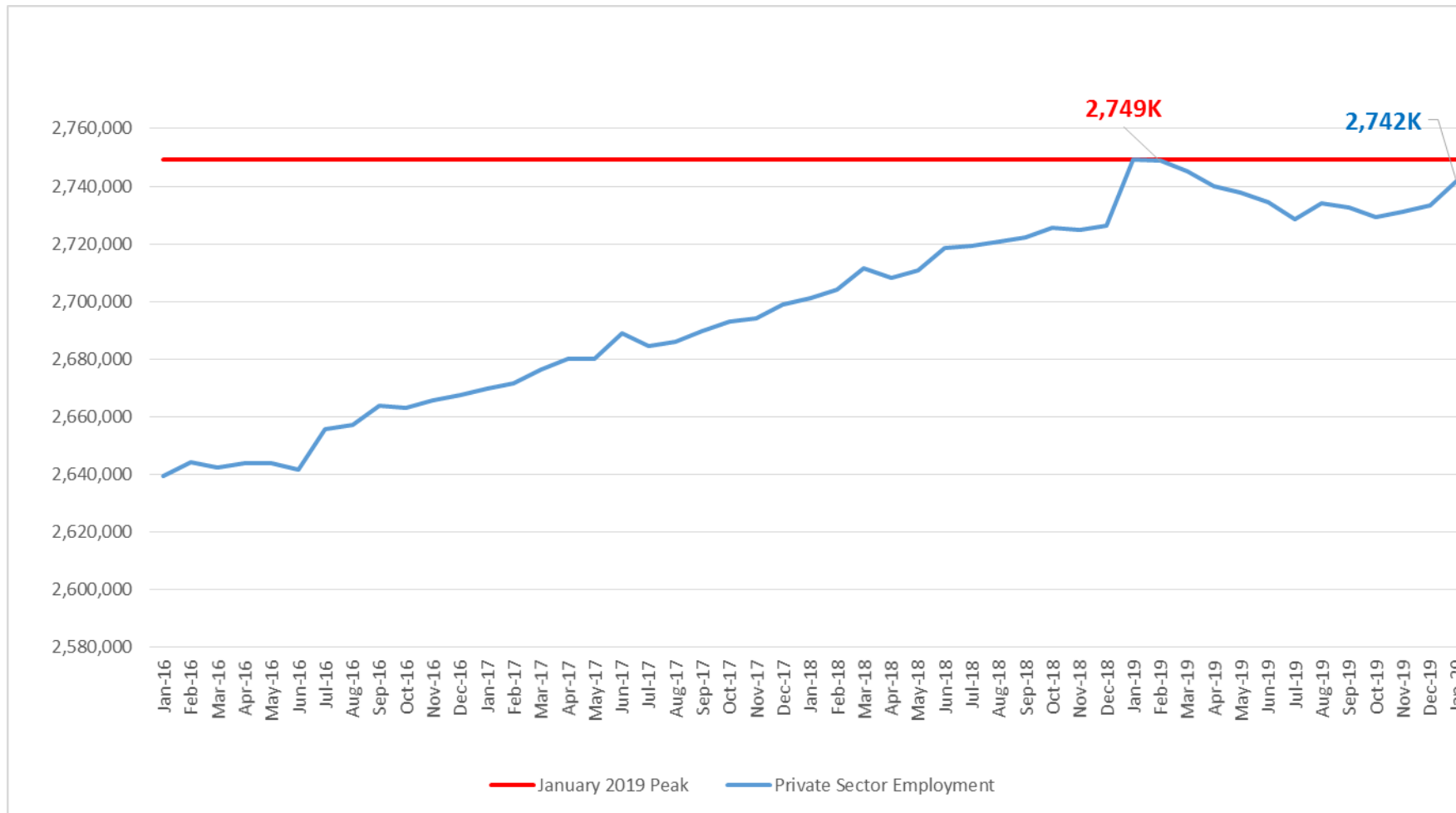
This counts jobs, not people, and is...

- An estimate of employment based on the location of the job regardless of the worker's residence
- Also called nonag wage and salary or nonfarm employment
- Used in Quarterly Census of Employment and Wages (QCEW), Occupational Employment Statistics (OES) and CES data

CES Monthly Jobs Report

Indiana Private Sector Employment

January 2020 total private employment is 7,400 below the January 2019 peak.



Indiana Private Sector Employment Change

January 2020 increased by 8,400 jobs over the month and is down 7,400 jobs over the year.

IN Employment Change Over the Month, Year-to-Date and Over the Year (seasonally

| Industry | January 2019 | December 2019 | January 2020 | Month Change | Y-to-D Change | Y-to-Y Change |
|--|--------------|---------------|--------------|--------------|---------------|---------------|
| Private Educational & Health Services | 479.7 | 484.1 | 486.7 | 2.6 | 2.6 | 7.0 |
|Private Educational Services | 65.5 | 63.2 | 64.9 | 1.7 | 1.7 | -0.6 |
|Health Care & Social Assistance | 414.2 | 420.9 | 421.8 | 0.9 | 0.9 | 7.6 |
| Manufacturing | 545.1 | 539.5 | 534.7 | -4.8 | -4.8 | -10.4 |
| Professional & Business Services | 344.9 | 343.1 | 343.9 | 0.8 | 0.8 | -1.0 |
| Financial Activities | 140.7 | 141.1 | 142.0 | 0.9 | 0.9 | 1.3 |
| Construction | 147.6 | 148.0 | 149.6 | 1.6 | 1.6 | 2.0 |
| Leisure and Hospitality | 317.4 | 309.6 | 312.8 | 3.2 | 3.2 | -4.6 |
| Trade, Transportation & Utilities | 603.9 | 598.9 | 602.5 | 3.6 | 3.6 | -1.4 |
|Trade | 443.9 | 437.8 | 441.9 | 4.1 | 4.1 | -2.0 |
|Transportation, Warehousing & Utilities | 160.0 | 161.1 | 160.6 | -0.5 | -0.5 | 0.6 |
| All Other | 170.0 | 169.2 | 169.7 | 0.5 | 0.5 | -0.3 |
| Total Private | 2,749.3 | 2,733.5 | 2,741.9 | 8.4 | 8.4 | -7.4 |
| Government (Includes Public Schools & Hospitals) | 429.9 | 429.5 | 429.4 | -0.1 | -0.1 | -0.5 |
| Total Nonfarm | 3,179.2 | 3,163.0 | 3,171.3 | 8.3 | 8.3 | -7.9 |
| United States Total Private | 127,628.0 | 129,319.0 | 129,541.0 | 222.0 | 222.0 | 1,913.0 |

- **Trade Transportation & Utilities gained 3,600 jobs** over the month, Leisure & Hospitality gained 3,200 jobs.
- **Manufacturing lost 4,800 jobs** over the month.

Source: Current Employment Statistics (seasonally adjusted)

For month to month change, [visit this link.](#)

Indiana Private Sector Employment Change From Peak and Trough

January 2020 estimates show Indiana has gained 414,000 private jobs since July 2009.

IN Statewide Estimates (seasonally adjusted) -- January 2020

| Supersector | Private Empl. Peak Jan 2019 | Private Empl. Trough July 2009 | December 2019 | January 2020 | Month to Month Change | Change Since Peak | Change Since Trough | % Month to Month Change |
|--|-----------------------------|--------------------------------|---------------|--------------|-----------------------|-------------------|---------------------|-------------------------|
| Private Educational & Health Services | 479.7 | 411.1 | 484.1 | 486.7 | 2.6 | 7.0 | 75.6 | 0.5% |
|Private Educational Services | 65.5 | 63.3 | 63.2 | 64.9 | 1.7 | -0.6 | 1.6 | 2.7% |
|Health Care & Social Assistance | 414.2 | 347.8 | 420.9 | 421.8 | 0.9 | 7.6 | 74.0 | 0.2% |
| Manufacturing | 545.1 | 427.3 | 539.5 | 534.7 | -4.8 | -10.4 | 107.4 | -0.9% |
| Professional & Business Services | 344.9 | 256.9 | 343.1 | 343.9 | 0.8 | -1.0 | 87.0 | 0.2% |
| Financial Activities | 140.7 | 130.7 | 141.1 | 142.0 | 0.9 | 1.3 | 11.3 | 0.6% |
| Construction | 147.6 | 117.4 | 148.0 | 149.6 | 1.6 | 2.0 | 32.2 | 1.1% |
| Leisure and Hospitality | 317.4 | 276.8 | 309.6 | 312.8 | 3.2 | -4.6 | 36.0 | 1.0% |
| Trade, Transportation & Utilities | 603.9 | 545.6 | 598.9 | 602.5 | 3.6 | -1.4 | 56.9 | 0.6% |
|Trade | 443.9 | 421.5 | 437.8 | 441.9 | 4.1 | -2.0 | 20.4 | 0.9% |
|Transportation, Warehousing & Utilities | 160.0 | 124.1 | 161.1 | 160.6 | -0.5 | 0.6 | 36.5 | -0.3% |
| All Other | 170.0 | 162.1 | 169.2 | 169.7 | 0.5 | -0.3 | 7.6 | 0.3% |
| | | | | | | | | |
| Total Private | 2,749.3 | 2,327.9 | 2,733.5 | 2,741.9 | 8.4 | -7.4 | 414.0 | 0.3% |
| Government (Includes Public Schools & Hospitals) | 429.9 | 434.5 | 429.5 | 429.4 | -0.1 | -0.5 | -5.1 | 0.0% |
| Total Nonfarm | 3,179.2 | 2,761.9 | 3,163.0 | 3,171.3 | 8.3 | -7.9 | 409.4 | 0.3% |
| | | | | | | | | |
| United States Total Private | 127,628.0 | 108,147.0 | 129,319.0 | 129,541.0 | 222.0 | 1,913.0 | 21,394.0 | 0.2% |

- Manufacturing has accounted for 107,400 of this **increase** of jobs.
- Professional & Business Services **increased** by 87,000 jobs over this time frame.

For historical data, [visit this link.](#)

Indiana Private Sector Employment Change Compared to U.S.

January 2020 Indiana private sector grew at a 0.3% and the U.S. grew by 0.2%.

IN Employment Change Compared to the U.S.

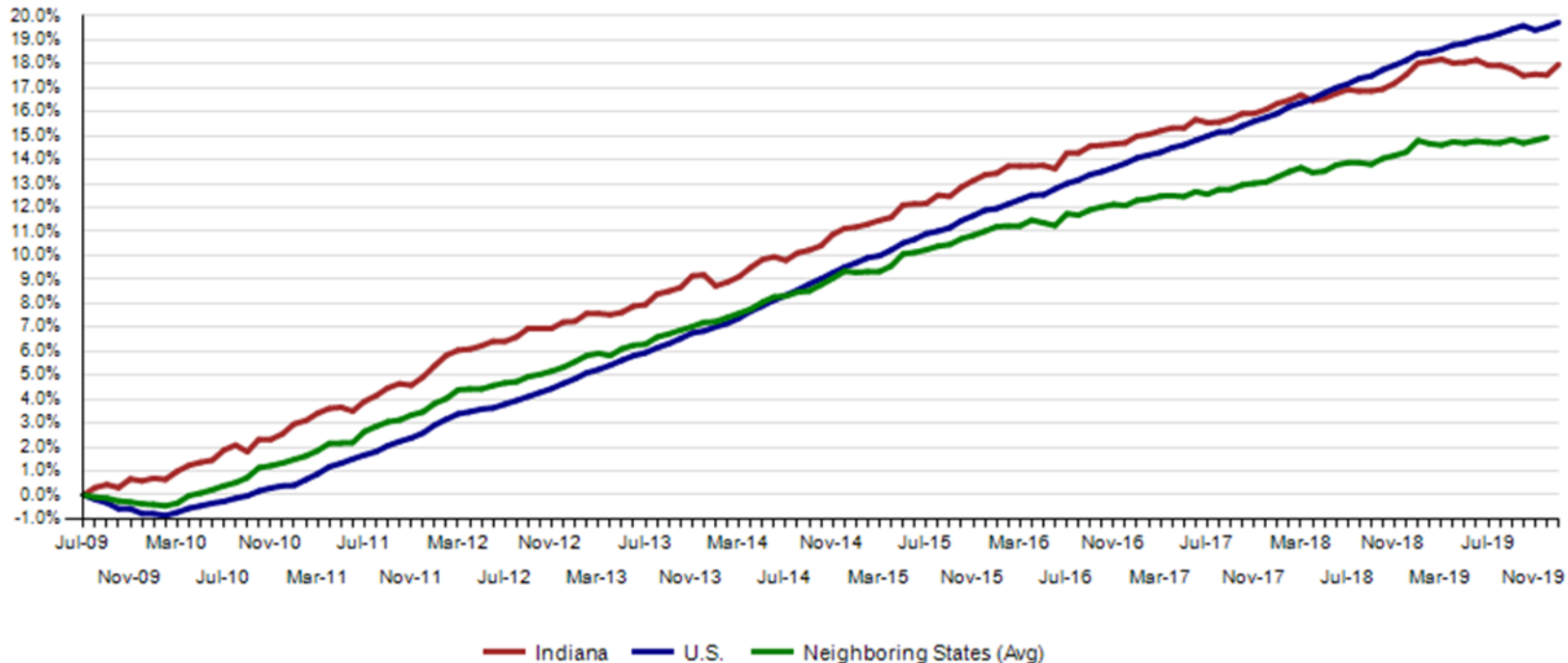
| Industry | Indiana Month to Month | U.S. Month to Month | Indiana vs U.S. Change | Indiana Year-to-Date | U.S. Year-to-Date | Indiana vs U.S. Change | Indiana Year-to-Year | U.S. Year-to-Year | Indiana vs U.S. Change |
|--|------------------------|---------------------|------------------------|----------------------|-------------------|------------------------|----------------------|-------------------|------------------------|
| Private Educational & Health Services | 0.5% | 0.3% | OVER | 0.5% | 0.3% | OVER | 1.5% | 2.7% | UNDER |
|Private Educational Services | 2.7% | 0.8% | OVER | 2.7% | 0.8% | OVER | -0.9% | 2.8% | UNDER |
|Health Care & Social Assistance | 0.2% | 0.2% | OVER | 0.2% | 0.2% | OVER | 1.8% | 2.6% | UNDER |
| Manufacturing | -0.9% | -0.2% | UNDER | -0.9% | -0.2% | UNDER | -1.9% | 0.2% | UNDER |
| Professional & Business Services | 0.2% | 0.1% | OVER | 0.2% | 0.1% | OVER | -0.3% | 1.9% | UNDER |
| Financial Activities | 0.6% | 0.1% | OVER | 0.6% | 0.1% | OVER | 0.9% | 1.7% | OVER |
| Construction | 1.1% | 0.6% | OVER | 1.1% | 0.6% | OVER | 1.4% | 2.0% | UNDER |
| Leisure and Hospitality | 1.0% | 0.2% | OVER | 1.0% | 0.2% | OVER | -1.4% | 2.0% | UNDER |
| Trade, Transportation & Utilities | 0.6% | 0.1% | OVER | 0.6% | 0.1% | OVER | -0.2% | 5.0% | OVER |
|Trade | 0.9% | 0.0% | OVER | 0.9% | 0.0% | OVER | -0.5% | 0.1% | OVER |
|Transportation, Warehousing & Utils | -0.3% | 0.5% | UNDER | -0.3% | 0.5% | UNDER | 0.4% | 1.6% | UNDER |
| All Other | 0.3% | 0.2% | OVER | 0.3% | 0.2% | OVER | -0.2% | 1.1% | OVER |
| Total Private | 0.3% | 0.2% | OVER | 0.3% | 0.2% | OVER | -0.3% | 1.5% | UNDER |
| Government (Includes Public Schools & Hospitals) | 0.0% | 0.2% | UNDER | 0.0% | 0.2% | UNDER | -0.1% | 1.0% | UNDER |
| Total Nonfarm | 0.3% | 0.2% | OVER | 0.3% | 0.2% | OVER | -0.2% | 1.4% | UNDER |

Source: Current Employment Statistics (seasonally adjusted)

Indiana Private Sector Employment Growth Since July 2009

Indiana is trailing the U.S. in private job growth since July 2009. The U.S. has grown by 19.7% while Indiana has grown by 17.8%.

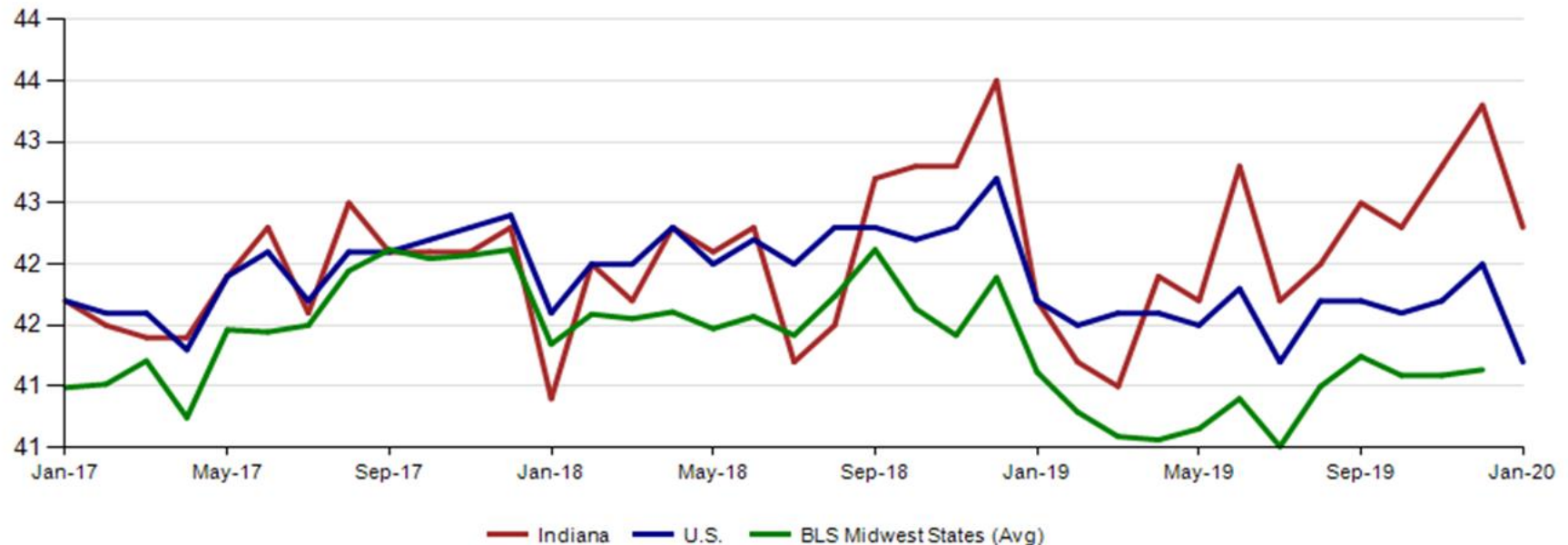
Private Sector Job Growth Since the Low Point of Employment in Indiana



Avg. Weekly Manufacturing Production Hours

January 2020 average weekly hours for Indiana manufacturing production hours decreased by 1.0 hour to 42.3 hours. National manufacturing decreased by 0.7 to 41.2 weekly hours, and Midwest states remained 41.1 hours per week (December 2019 data).

Avg. Weekly Manufacturing Production Hours (non seasonally adjusted)



Monthly Labor Force Report

Jobs Data for January 2020

| Month NSA | Labor Force | Employed | Unemployed | IN Rate | Total NonFarm | Total Private | Regular UI Claims |
|-----------|-------------|-----------|------------|---------|---------------|---------------|-------------------|
| Dec-16 | 3,288,631 | 3,161,080 | 127,551 | 3.9 | 3,118,700 | 2,681,300 | 24,599 |
| Jan-20 | 3,374,213 | 3,252,717 | 121,496 | 3.6 | 3,113,100 | 2,683,900 | 23,334 |
| Change | 85,582 | 91,637 | (6,055) | (0.3) | (5,600) | 2,600 | (1,265) |

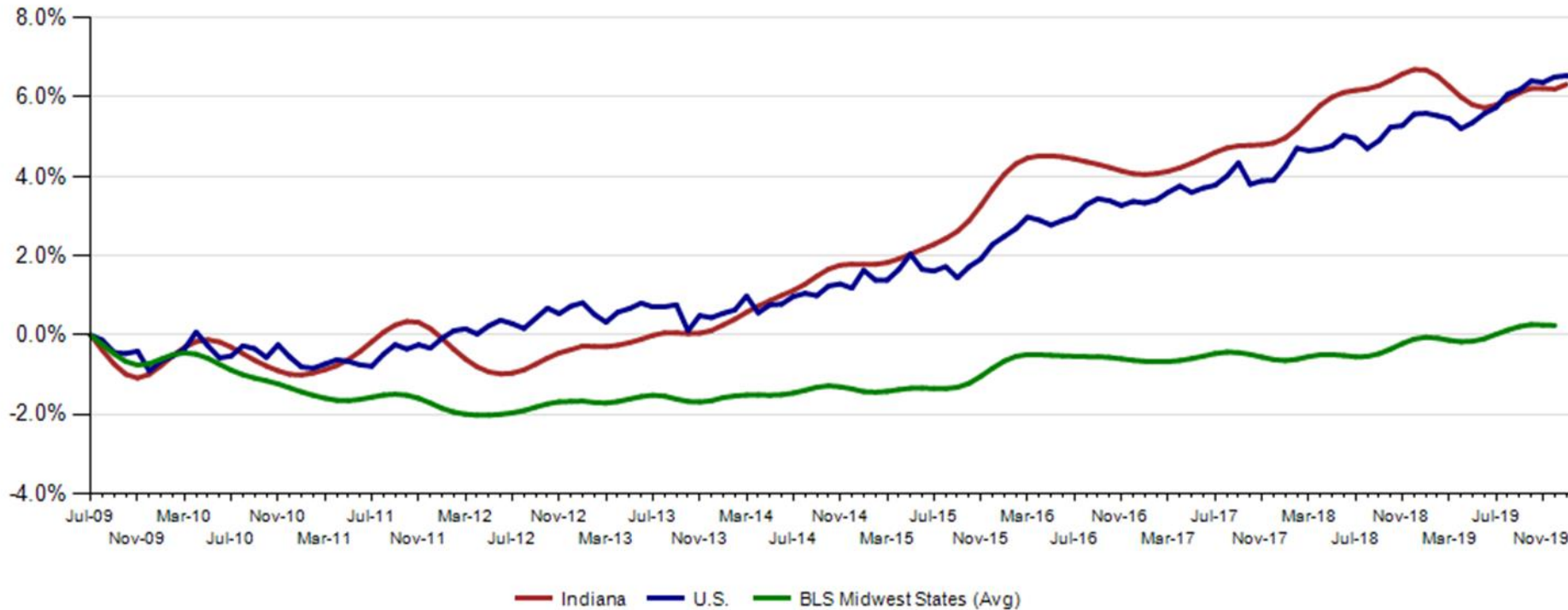
| Month SA | Labor Force | Employed | Unemployed | IN Rate | Total NonFarm | Total Private | Regular UI Claims |
|----------|-------------|-----------|------------|---------|---------------|---------------|-------------------|
| Dec-16 | 3,320,863 | 3,187,493 | 133,370 | 4.0 | 3,094,300 | 2,667,700 | 24,599 |
| Jan-20 | 3,392,608 | 3,285,835 | 106,773 | 3.1 | 3,171,300 | 2,741,900 | 23,334 |
| Change | 71,745 | 98,342 | (26,597) | (0.9) | 77,000 | 74,200 | (1,265) |

Indiana Labor Force Pct. Growth Since July '09 Indiana Trough

January 2020 Indiana Seasonally Adjusted Labor Force stands at 3,392,608.

- Employed labor force **increased 4,626** over the month
- Unemployment **decreased** by 877 the month

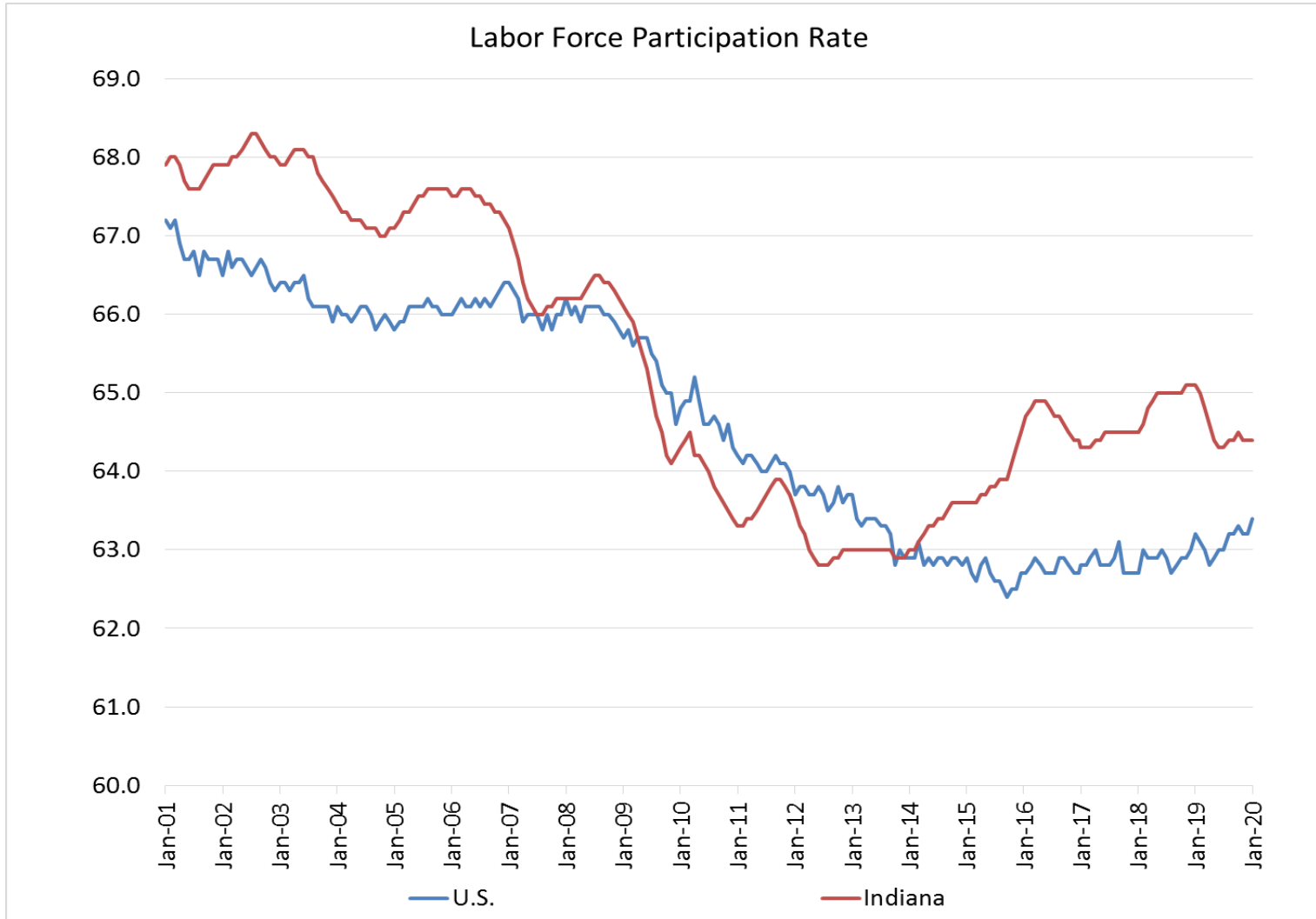
Labor Force Change Since July 2009 Indiana Trough (seasonally adjusted)



Source: Current Employment Statistics (seasonally adjusted)

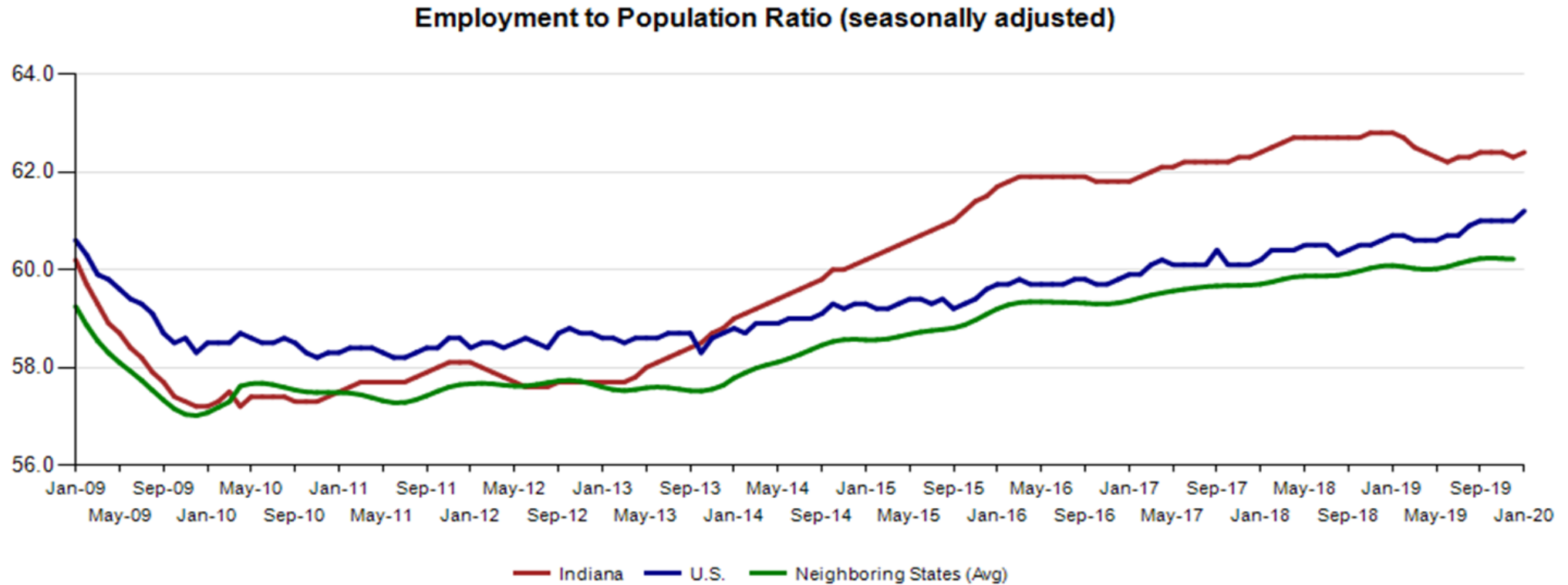
Indiana Labor Force Participation Rate Compared to U.S.

Indiana is at 64.4% compared to U.S. at 63.4%



Employment to Population Ratio (seasonally adjusted)

The Indiana Employment to Population Ratio for January 2020 is 62.4% compared to the U.S. at 61.2% and border states at 60.2% (December)



Alternative Measures of Labor Underutilization 2019 Annual Averages

| State | U-1 | U-2 | U-3 | U-4 | U-5 | U-6 |
|---------------|-----|-----|-----|-----|-----|-----|
| Illinois | 1.5 | 2.0 | 3.9 | 4.1 | 4.7 | 7.4 |
| Indiana | 0.9 | 1.8 | 3.4 | 3.6 | 4.1 | 6.3 |
| Kentucky | 1.4 | 2.0 | 4.3 | 4.6 | 5.4 | 7.7 |
| Michigan | 1.3 | 1.9 | 4.0 | 4.3 | 4.8 | 7.5 |
| Minnesota | 0.8 | 2.0 | 3.3 | 3.3 | 3.7 | 5.9 |
| Ohio | 1.1 | 1.7 | 4.0 | 4.1 | 4.9 | 7.8 |
| Wisconsin | 1.0 | 1.7 | 3.4 | 3.5 | 4.0 | 6.0 |
| United States | 1.3 | 1.7 | 3.7 | 3.9 | 4.5 | 7.2 |

The six state measures are based on the same definitions as those published for the U.S.:

- U-1, persons unemployed 15 weeks or longer, as a percent of the civilian labor force;
- U-2, job losers and persons who completed temporary jobs, as a percent of the civilian labor force;
- U-3, total unemployed, as a percent of the civilian labor force (this is the definition used for the official unemployment rate);
- U-4, total unemployed plus discouraged workers, as a percent of the civilian labor force plus discouraged workers;
- U-5, total unemployed, plus discouraged workers, plus all other marginally attached workers, as a percent of the civilian labor force plus all marginally attached workers; and
- U-6, total unemployed, plus all marginally attached workers, plus total employed part time for economic reasons, as a percent of the civilian labor force plus all marginally attached workers.

Midwest Comparison Rates: Seasonally Adjusted Over the Year and Over the Month

| | Jan-19 | Dec-19 | Jan-20 | Monthly change | Yearly change |
|-----------|--------|--------|--------|----------------|---------------|
| Indiana | 3.6% | 3.2% | 3.1% | -0.1% | -0.5% |
| U.S. | 4.0% | 3.5% | 3.6% | 0.1% | -0.4% |
| Illinois | 4.4% | 3.7% | 3.5% | -0.2% | -0.9% |
| Kentucky | 4.2% | 4.3% | 4.3% | 0.0% | 0.1% |
| Michigan | 4.2% | 3.9% | 3.8% | -0.1% | -0.4% |
| Minnesota | 3.2% | 3.3% | 3.2% | -0.1% | 0.0% |
| Ohio | 4.3% | 4.1% | 4.1% | 0.0% | -0.2% |
| Wisconsin | 3.1% | 3.5% | 3.5% | 0.0% | 0.4% |

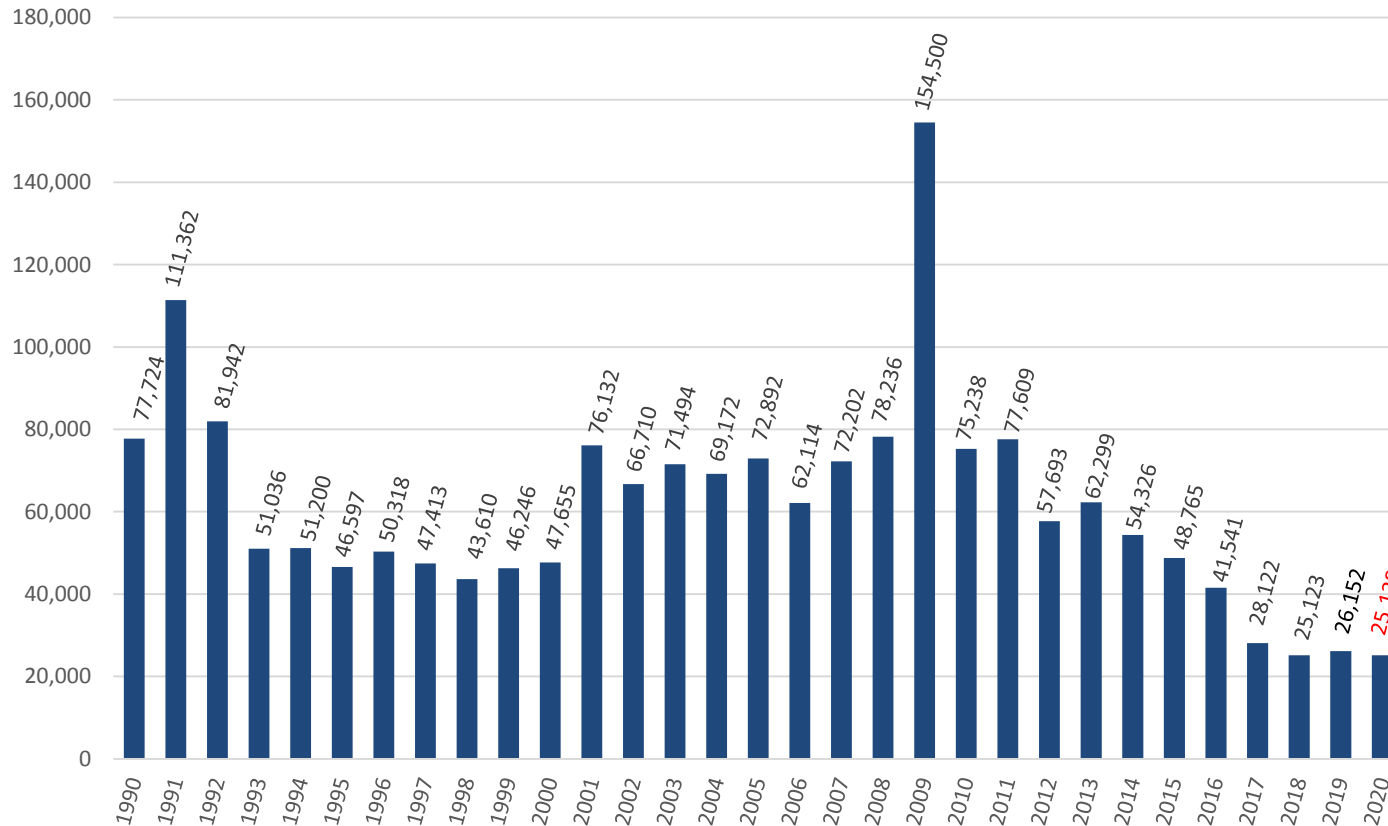
*2019 Benchmark

Confidential & Deliberative



Weekly Initial Claims – Week 8

Total aggregated UI claims for the first 8 weeks of each year as reported to ETA.



Regular UI Claims

Reference Week (12th of the month) Input to LAUS Unemployment Rate Model

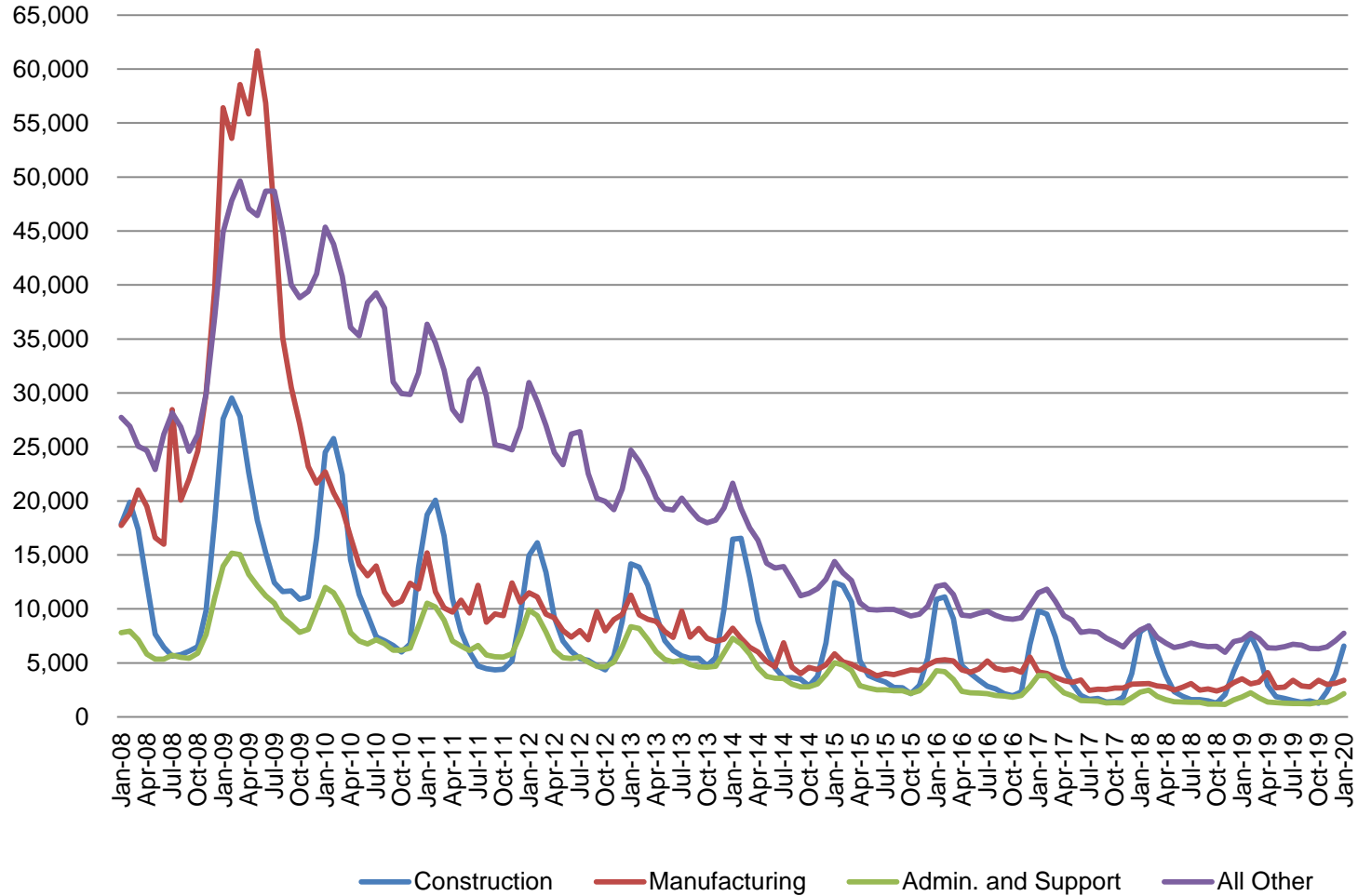
Declines over the month - and over the year

| | 2009 | 2013 | 2014 | 2015 | 2016 | 2017 | 2018 | 2019 | 2020 | OTM Change | OTY Change |
|-----------|---------|--------|--------|--------|--------|--------|--------|--------|--------|------------|------------|
| JANUARY | 150,888 | 63,223 | 49,377 | 41,333 | 36,555 | 33,137 | 24,968 | 21,808 | 23,334 | 6,518 | 1,526 |
| FEBRUARY | 154,388 | 60,183 | 52,316 | 39,282 | 36,909 | 32,463 | 25,879 | 23,992 | | | |
| MARCH | 157,257 | 54,578 | 45,928 | 35,755 | 32,439 | 32,141 | 21,171 | 22,446 | | | |
| APRIL | 143,842 | 48,548 | 39,717 | 25,597 | 23,895 | 21,998 | 17,618 | 17,914 | | | |
| MAY | 141,174 | 42,997 | 32,460 | 22,807 | 22,300 | 19,431 | 14,774 | 14,411 | | | |
| JUNE | 136,670 | 41,722 | 29,524 | 22,030 | 22,025 | 16,722 | 14,653 | 14,386 | | | |
| JULY | 121,336 | 44,597 | 30,845 | 22,341 | 22,326 | 15,775 | 15,098 | 15,054 | | | |
| AUGUST | 103,509 | 39,998 | 26,061 | 21,472 | 20,737 | 15,692 | 13,959 | 14,156 | | | |
| SEPTEMBER | 92,680 | 39,563 | 23,685 | 20,941 | 19,372 | 14,334 | 12,981 | 13,620 | | | |
| OCTOBER | 86,275 | 37,778 | 23,768 | 19,917 | 19,143 | 14,266 | 13,083 | 14,106 | | | |
| NOVEMBER | 82,451 | 38,517 | 25,315 | 21,199 | 19,547 | 14,347 | 15,499 | 14,274 | | | |
| DECEMBER | 91,814 | 42,484 | 30,982 | 26,249 | 24,599 | 17,345 | 16,693 | 16,816 | | | |

**Without earnings – Reference week claims*

Regular UI Claims by Industry

For the Reference Week of Each Month



Source: ETA 203

Indiana: Not in the Labor Force by Gender and Age

February 2019 – January 2020
Current Population Survey, Bureau of Labor Statistics (in 1000s)

| | Total | Age | | | Sex | |
|--|---------|----------------|----------------|-------------------|-------|---------|
| | | 16 to 24 years | 25 to 54 years | 55 years and over | Men | Women |
| Indiana | | | | | | |
| Total not in the labor force | 1,858.9 | 295.6 | 434.4 | 1,128.9 | 738.3 | 1,120.6 |
| Do not want a job now | 1,762.8 | 263.6 | 402.8 | 1,096.4 | 691.1 | 1,071.7 |
| Want a job | 96.1 | 32.0 | 31.6 | 32.5 | 47.2 | 49.0 |
| Did not search for work in previous year | 64.0 | 20.8 | 17.3 | 25.8 | 28.4 | 35.6 |
| Searched for work in previous year | 32.1 | 11.1 | 14.3 | 6.7 | 18.8 | 13.4 |
| Not available to work now | 8.0 | 3.8 | 3.3 | 1.0 | 4.4 | 3.6 |
| Available to work now | 24.1 | 7.4 | 11.1 | 5.7 | 14.4 | 9.7 |
| Reason not currently looking: | | | | | | |
| Discouragement over job prospects | 7.7 | 1.8 | 3.3 | 2.6 | 5.7 | 1.9 |
| Reasons other than discouragement | 16.4 | 5.6 | 7.8 | 3.0 | 8.6 | 7.8 |

- Data not available

Source: Table b. Civilians not in the labor force by sex and age, February 2019-January 2020 (based on CPS) (Numbers in thousands)

Indiana: Labor Force by Education Attainment

February 2019 – January 2020
Current Population Survey, Bureau of Labor Statistics (in 1000s)

| | Civilian noninstitutional population | Civilian Labor Force | | Employment | | Unemployment | |
|--|--|-------------------------|------|------------|------|--------------|------|
| | | Total | Rate | Total | Rate | Total | Rate |
| Indiana | | | | | | | |
| Less than a High school diploma | 300.9 | 126.8 | 42.1 | 117.8 | 39.1 | 9.0 | 7.1 |
| High school graduates, no college ¹ | 1,517.9 | 914.1 | 60.2 | 859.1 | 56.6 | 55.0 | 6.0 |
| Some college or associate degree | 1,287.4 | 879.3 | 68.3 | 860.7 | 66.9 | 18.6 | 2.1 |
| Bachelor's degree and higher ² | 1,352.7 | 1,044.5 | 77.2 | 1,028.8 | 76.1 | 15.6 | 1.5 |

- Data not available

¹ Includes persons with a high school diploma or equivalent

² Includes person with bachelor's, master's, professional and doctoral degrees

Source: Table f. Employment status of the civilian non-institutional population 25 years and over by educational attainment, February 2019- January 2020 (based on CPS) (Numbers in thousands)

Indiana: Labor Force by Gender and Age

| | Civilian labor force participation rate | Unemployment rate |
|--------------------------|---|-------------------|
| Both Sexes | | |
| All Races | | |
| Age 16+ | 64.5 | 3.3 |
| Age 16-19 | 43.8 | 9.3 |
| Age 20+ | 66.0 | 3.0 |
| White | | |
| Age 16+ | 64.3 | 3.0 |
| Age 16-19 | 46.9 | 8.3 |
| Age 20+ | 65.5 | 2.8 |
| Black | | |
| Age 16+ | 64.6 | 5.2 |
| Age 16-19 | 32.0 | 16.5 |
| Age 20+ | 67.0 | 4.8 |
| Hispanic | | |
| Age 16+ | 70.1 | 4.1 |
| Age 16-19 | 47.7 | 12.8 |
| Age 20+ | 72.5 | 3.5 |
| Male, All Races | | |
| Age 16+ | 71.0 | 3.3 |
| Age 20+ | 72.9 | 3.0 |
| Female, All Races | | |
| Age 16+ | 58.5 | 3.2 |
| Age 20+ | 59.6 | 3.0 |
| Male, White | | |
| Age 16+ | 70.9 | 3.1 |
| Age 20+ | 72.4 | 2.8 |
| Female, White | | |
| Age 16+ | 58.0 | 3.0 |
| Age 20+ | 58.9 | 2.8 |
| Male, Black | | |
| Age 16+ | 67.7 | 5.0 |
| Age 20+ | 70.8 | 4.4 |
| Female, Black | | |
| Age 16+ | 61.9 | 5.5 |
| Age 20+ | 63.8 | 5.3 |

Source: Table a. Employment status of the civilian non-institutional population by sex, age, race, and Hispanic origin, February 2019-January 2020 (based on CPS) (Numbers in thousands)

Indiana: Labor Force by Gender and Age

February 2019 – January 2020

Current Population Survey, Bureau of Labor Statistics (in 1000s)

| | Civilian labor force participation rate | Unemployment rate |
|--------------------------|---|-------------------|
| Male, All Races | | |
| Age 16-19 | 45.3 | 10.5 |
| Age 20-24 | 80.6 | 5.8 |
| Age 25-34 | 90.1 | 3.9 |
| Age 35-44 | 93.2 | 2.1 |
| Age 45-54 | 88.9 | 2.8 |
| Age 55-64 | 70.8 | 1.7 |
| Age 65+ | 22.7 | 2.4 |
| Female, All Races | | |
| Age 16-19 | 42.4 | 8.1 |
| Age 20-24 | 74.3 | 4.4 |
| Age 25-34 | 73.9 | 3.6 |
| Age 35-44 | 74.4 | 3.0 |
| Age 45-54 | 77.7 | 2.2 |
| Age 55-64 | 61.2 | 2.4 |
| Age 65+ | 16.7 | 3.1 |

Source: Table a. Employment status of the civilian non-institutional population by sex, age, race, and Hispanic origin, February 2019-January 2020 (based on CPS) (Numbers in thousands)

Indiana: Duration of Unemployment Part 1

February 2019 – January 2020

Current Population Survey, Bureau of Labor Statistics (in 1000s)

| | Total | 5 to 14 weeks | 15 weeks and over | | | | | Median duration (Average of monthly median duration) | Mean duration |
|----------------|-------|---------------|-------------------|----------------|-------------------|----------------|-------------------|---|---------------|
| | | | Total | 15 to 26 weeks | 27 weeks and over | | | | |
| | | | | | Total | 27 to 51 weeks | 52 weeks and over | | |
| Indiana | | | | | | | | | |
| Both Sexes | | | | | | | | | |
| All Races | 110.8 | 37.4 | 32.5 | 12.5 | 20.1 | 8.9 | 11.2 | 8.3 | 18.1 |
| White | 87.8 | 28.3 | 26.5 | 10.9 | 15.5 | 7.7 | 7.8 | 8.4 | 16.9 |
| Black | 16.7 | 7.2 | 3.5 | 0.9 | 2.6 | 1.1 | 1.5 | 6.0 | 17.0 |
| Hispanic | 11.0 | 3.4 | 4.5 | 2.1 | 2.4 | - | 2.4 | 17.5 | 22.9 |
| Age 16-19 | 14.2 | 4.3 | 2.2 | 1.2 | 1.0 | 0.4 | 0.6 | 13.8 | 10.6 |
| Age 20+ | 96.6 | 33.1 | 30.3 | 11.3 | 19.0 | 8.5 | 10.6 | 8.9 | 19.2 |
| Male, 16+ | 59.8 | 22.2 | 18.4 | 8.2 | 10.2 | 4.3 | 5.9 | 9.3 | 18.7 |
| Female, 16+ | 51.1 | 15.1 | 14.1 | 4.3 | 9.8 | 4.6 | 5.3 | 6.6 | 17.4 |

- Data not available

Source: Table d. Unemployed persons by sex, age, race, Hispanic origin, and duration of unemployment, February 2019-January 2020 (based on CPS) (Numbers in thousands)

Indiana: Duration of Unemployment Part 2

February 2019 – January 2020

Current Population Survey, Bureau of Labor Statistics (in 1000s)

| | Duration of unemployment | | | | | | | Aggregate weeks of unemployment |
|----------------|--------------------------|-----|------|-------|-------|-------|------|---------------------------------------|
| | Less than 5 weeks | 5-6 | 7-10 | 11-14 | 15-26 | 27-51 | 52+ | |
| Indiana | | | | | | | | |
| Both Sexes | | | | | | | | |
| All Races | 40.9 | 7.6 | 16.3 | 13.5 | 12.5 | 8.9 | 11.2 | 2,006.1 |
| White | 33.1 | 6.8 | 12.3 | 9.2 | 10.9 | 7.7 | 7.8 | 1,481.7 |
| Black | 5.9 | 0.4 | 3.2 | 3.6 | 0.9 | 1.1 | 1.5 | 283.3 |
| Hispanic | 3.1 | 0.7 | 1.6 | 1.0 | 2.1 | - | 2.4 | 252.6 |
| Age 16-19 | 7.8 | 1.2 | 1.3 | 1.8 | 1.2 | 0.4 | 0.6 | 150.7 |
| Age 20+ | 33.2 | 6.4 | 15.0 | 11.7 | 11.3 | 8.5 | 10.6 | 1,855.4 |
| Male, 16+ | 19.1 | 3.3 | 9.3 | 9.7 | 8.2 | 4.3 | 5.9 | 1,118.6 |
| Female, 16+ | 21.9 | 4.3 | 7.0 | 3.8 | 4.3 | 4.6 | 5.3 | 887.5 |

- Data not available

Source: Table d. Unemployed persons by sex, age, race, Hispanic origin, and duration of unemployment, February 2019-January 2020 (based on CPS) (Numbers in thousands)

Purchasing Managers' Index (PMI)

- The Purchasing Managers Index (PMI) is a measure of the prevailing direction of economic trends in manufacturing.
- The PMI is based on a monthly survey of supply chain managers across 19 industries, covering both upstream and downstream activity.
- The value and movements in the PMI and its components can provide useful insight to business decision makers, market analysts, and investors, and is a leading indicator of overall economic activity in the U.S.

PMI is a number from 0 to 100. A PMI above 50 represents an expansion when compared with the previous month. A PMI reading under 50 represents a contraction.

| Index | Series Index Jan. 2020 | Series Index Dec. 2019 | Percentage Point Change | Direction | Rate of Change | Trend* (Months) |
|-----------------------------|---------------------------|---------------------------|----------------------------|-------------|---------------------|--------------------|
| PMI® | 50.9 | 47.8 | 3.1 | Growing | From Contracting | 1 |
| New Orders | 52 | 47.6 | 4.4 | Growing | From Contracting | 1 |
| Production | 54.3 | 44.8 | 9.5 | Growing | From Contracting | 1 |
| Employment | 46.6 | 45.2 | 1.4 | Contracting | Slower | 6 |
| Supplier Deliveries | 52.9 | 52.2 | 0.7 | Slowing | Faster | 3 |
| Inventories | 48.8 | 49.2 | -0.4 | Contracting | Faster | 8 |
| Customers' Inventories | 43.8 | 41.1 | 2.7 | Too Low | Slower | 40 |
| Prices | 53.3 | 51.7 | 1.6 | Increasing | Faster | 2 |
| Backlog of Orders | 45.7 | 43.3 | 2.4 | Contracting | Slower | 9 |
| New Export Orders | 53.3 | 47.3 | 6 | Growing | From Contracting | 1 |
| Imports | 51.3 | 48.8 | 2.5 | Growing | From Contracting | 1 |
| OVERALL ECONOMY | | | | Growing | Faster | 129 |
| Manufacturing Sector | | | | Growing | From Contracting | 1 |