

Indiana's Employment and Labor Force Estimates February 2020

03/25/2020

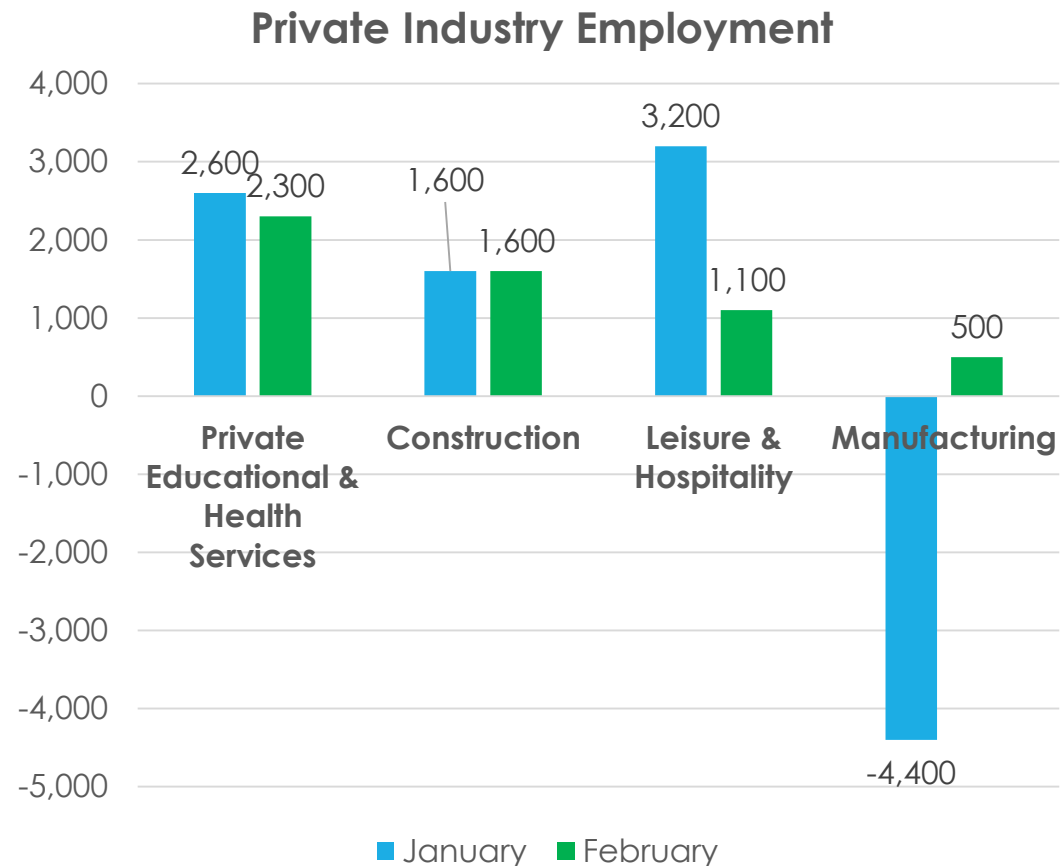
Key Points

- **Indiana's unemployment rate stands at 3.1% in February 2020. The U.S. is at 3.5%.**
- **Indiana's rate is 0.4% lower than it was over the year from February 2019.**
- Indiana's Labor Force increased over the month by 3,114; due to an increase in residence employment of 4,713 and a decrease in unemployment of 1,599.
- Indiana's Labor Force has decreased 3,255 over the year.
- Indiana's Labor Force Participation Rate is at 64.4%. This is above the U.S. Labor Force Participation Rate of 63.4%.

Key Points: February 2020

Indiana's Private Employment

- Increased by 3,900 jobs over the month and had loses of 800 over the year.
- February private employment = 2,748,000.



Revisions to January 2020 Estimates

Revisions to January 2020 Estimates						
INDUSTRY TITLE	Dec	Jan Prel	Jan Rev	Revision	Chg from Dec	Pre Chg from Dec
Total Nonfarm	3163.0	3171.3	3176.3	5.0	13.3	8.3
Total Private	2733.5	2741.9	2744.1	2.2	10.6	8.4
Goods Producing	693.4	690.1	691.3	1.2	-2.1	-3.3
Service-Providing	2469.6	2481.2	2485.0	3.8	15.4	11.6
Private Service Providing	2040.1	2051.8	2052.8	1.0	12.7	11.7
Construction	148.0	149.6	150.4	0.8	2.4	1.6
Manufacturing	539.5	534.7	535.1	0.4	-4.4	-4.8
Trade, Transportation, and Utilities	598.9	602.5	603.5	1.0	4.6	3.6
Wholesale Trade	121.8	122.1	122.3	0.2	0.5	0.3
Retail Trade	316.0	319.8	320.4	0.6	4.4	3.8
Transportation, Warehousing, and Utilities	161.1	160.6	160.8	0.2	-0.3	-0.5
Information	28.7	28.6	28.5	-0.1	-0.2	-0.1
Financial Activities	141.1	142.0	142.6	0.6	1.5	0.9
Finance and Insurance	104.8	105.7	106.2	0.5	1.4	0.9
Real Estate and Rental and Leasing	36.3	36.3	36.4	0.1	0.1	0.0
Professional and Business Services	343.1	343.9	343.7	-0.2	0.6	0.8
Professional, Scientific, and Technical Services	123.9	123.9	124.3	0.4	0.4	0.0
Management of Companies and Enterprises	34.6	34.5	34.5	0.0	-0.1	-0.1
Admin & Support & Waste Mgmt & Remediation Services	184.6	185.5	184.9	-0.6	0.3	0.9
Education and Health Services	484.1	486.7	485.9	-0.8	1.8	2.6
Educational Services	63.2	64.9	64.9	0.0	1.7	1.7
Health Care and Social Assistance	420.9	421.8	421.0	-0.8	0.1	0.9
Leisure and Hospitality	309.6	312.8	313.4	0.6	3.8	3.2
Other Services	134.6	135.3	135.2	-0.1	0.6	0.7
Government	429.5	429.4	432.2	2.8	2.7	-0.1

Comparing Local Area Unemployment Statistics (LAUS) and Current Employment Statistics (CES)

LAUS (Labor Force by Residence)

This counts people, not jobs, and is...

- An estimate of employment based on where the employee lives, rather than where they work
- Used in calculating the labor force

CES (Employment by Job)

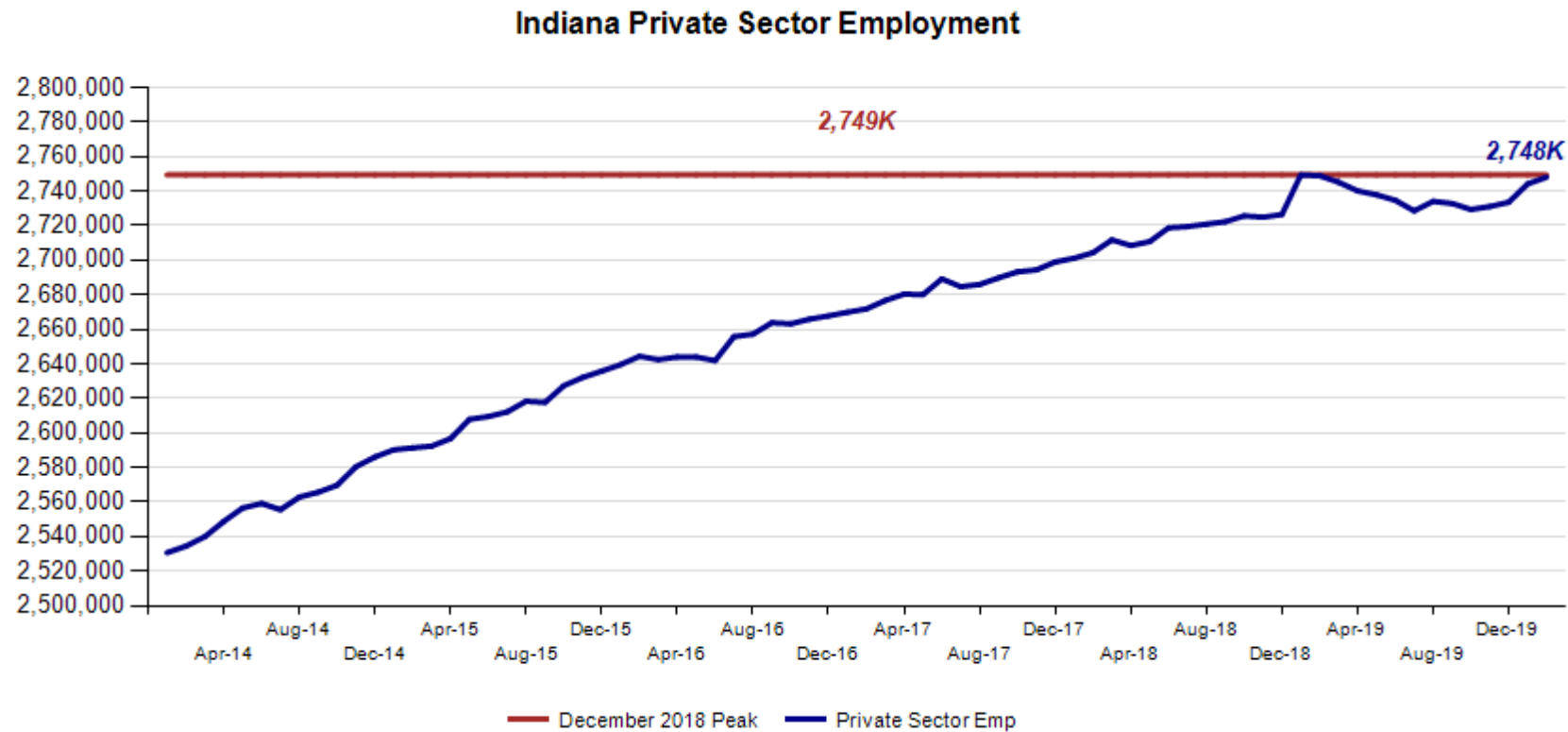
This counts jobs, not people, and is...

- An estimate of employment based on the location of the job regardless of the worker's residence
- Also called nonag wage and salary or nonfarm employment
- Used in Quarterly Census of Employment and Wages (QCEW), Occupational Employment Statistics (OES) and CES data

CES Monthly Jobs Report

Indiana Private Sector Employment

February 2020 total private employment is 800 below the January 2019 peak.



Indiana Private Sector Employment Change

February 2020 increased by 3,900 jobs over the month and is down 1,300 jobs over the year.

IN Employment Change Over the Month, Year-to-Date and Over the Year (seasonally adjusted)

Industry	February 2019	December 2019	January 2020	February 2020	Month Change	Y-to-D Change	Y-to-Y Change
Private Educational & Health Services	480.7	484.1	485.9	488.2	2.3	4.1	7.5
.....Private Educational Services	65.6	63.2	64.9	66.2	1.3	3.0	0.6
.....Health Care & Social Assistance	415.1	420.9	421.0	422.0	1.0	1.1	6.9
Manufacturing	545.5	539.5	535.1	535.6	0.5	-3.9	-9.9
Professional & Business Services	346.1	343.1	343.7	343.4	-0.3	0.3	-2.7
Financial Activities	141.0	141.1	142.6	143.0	0.4	1.9	2.0
Construction	147.0	148.0	150.4	152.0	1.6	4.0	5.0
Leisure and Hospitality	316.3	309.6	313.4	314.5	1.1	4.9	-1.8
Trade, Transportation & Utilities	602.4	598.9	603.5	602.0	-1.5	3.1	-0.4
.....Trade	443.1	437.8	442.7	440.4	-2.3	2.6	-2.7
.....Transportation, Warehousing & Utilities	159.3	161.1	160.8	161.6	0.8	0.5	2.3
All Other	169.8	169.2	169.5	169.3	-0.2	0.1	-0.5
Total Private	2,748.8	2,733.5	2,744.1	2,748.0	3.9	14.5	-0.8
Government (Includes Public Schools & Hospitals)	429.7	429.5	432.2	433.3	1.1	3.8	3.6
Total Nonfarm	3,178.5	3,163.0	3,176.3	3,181.3	5.0	18.3	2.8
United States Total Private	127,622.0	129,319.0	129,541.0	129,769.0	228.0	450.0	2,147.0

- **Private Education & Health Services gained 2,300 jobs** over the month, Construction gained 1,600 jobs.
- Trade Transportation and Utilities **lost 1,500 jobs** over the month.

Source: Current Employment Statistics (seasonally adjusted)

For month to month change, [visit this link](#).

Indiana Private Sector Employment Change From Peak and Trough

February 2020 estimates show Indiana has gained 420,600 private jobs since July 2009.

IN Statewide Estimates (seasonally adjusted) -- February 2020

Supersector	Private Empl. Peak Jan 2019	Private Empl. Trough July 2009	January 2020	February 2020	Month to Month Change	Change Since Peak	Change Since Trough	% Month to Month Change
Private Educational & Health Services	479.7	411.1	485.9	488.2	2.3	8.5	77.1	0.5%
.....Private Educational Services	65.5	63.3	64.9	66.2	1.3	0.7	2.9	2.0%
.....Health Care & Social Assistance	414.2	347.8	421.0	422.0	1.0	7.8	74.2	0.2%
Manufacturing	545.1	427.3	535.1	535.6	0.5	-9.5	108.3	0.1%
Professional & Business Services	344.9	256.8	343.7	343.4	-0.3	-1.5	86.6	-0.1%
Financial Activities	140.7	130.7	142.6	143.0	0.4	2.3	12.3	0.3%
Construction	147.6	117.4	150.4	152.0	1.6	4.4	34.6	1.1%
Leisure and Hospitality	317.4	276.8	313.4	314.5	1.1	-2.9	37.7	0.4%
Trade, Transportation & Utilities	603.9	545.6	603.5	602.0	-1.5	-1.9	56.4	-0.2%
.....Trade	443.9	421.5	442.7	440.4	-2.3	-3.5	18.9	-0.5%
.....Transportation, Warehousing & Utilities	160.0	124.1	160.8	161.6	0.8	1.6	37.5	0.5%
All Other	170.0	161.7	169.5	169.3	-0.2	-0.7	7.6	-0.1%
Total Private	2,749.3	2,327.4	2,744.1	2,748.0	3.9	-1.3	420.6	0.1%
Government (Includes Public Schools & Hospitals)	429.9	434.5	432.2	433.3	1.1	3.4	-1.2	0.3%
Total Nonfarm	3,179.2	2,761.9	3,176.3	3,181.3	5.0	2.1	419.4	0.2%
United States Total Private	127,628.0	108,147.0	129,541.0	129,769.0	228.0	2,141.0	21,622.0	0.2%

- Manufacturing has accounted for 108,300 of this **increase** of jobs.
- Professional & Business Services **increased** by 86,600 jobs over this time frame.

For historical data, [visit this link](#).

Indiana Private Sector Employment Change Compared to U.S.

February 2020 Indiana private sector grew at a 0.1% and the U.S. grew by 0.2%.

IN Employment Change Compared to the U.S.

Industry	Indiana Month to Month	U.S. Month to Month	Indiana vs U.S. Change
Private Educational & Health Services	0.5%	0.2%	OVER
.....Private Educational Services	2.0%	0.0%	OVER
.....Health Care & Social Assistance	0.2%	0.3%	UNDER
Manufacturing	0.1%	0.1%	UNDER
Professional & Business Services	-0.1%	0.2%	UNDER
Financial Activities	0.3%	0.3%	UNDER
Construction	1.1%	0.6%	OVER
Leisure and Hospitality	0.4%	0.3%	OVER
Trade, Transportation & Utilities	-0.2%	0.0%	UNDER
.....Trade	-0.5%	0.0%	UNDER
.....Transportation, Warehousing & Utils	0.5%	-0.1%	OVER
All Other	-0.1%	0.1%	UNDER
Total Private	0.1%	0.2%	UNDER
Government (Includes Public Schools & Hospitals)	0.3%	0.2%	OVER
Total Nonfarm	0.2%	0.2%	UNDER

Indiana Year-to-Date	U.S. Year-to-Date	Indiana vs U.S. Change
0.8%	0.5%	OVER
4.7%	0.7%	OVER
0.3%	0.5%	UNDER
-0.7%	0.0%	UNDER
0.1%	0.3%	UNDER
1.3%	0.4%	OVER
2.7%	1.2%	OVER
1.6%	0.5%	OVER
0.5%	0.1%	OVER
0.6%	0.0%	OVER
0.3%	0.4%	UNDER
0.1%	0.3%	UNDER
0.5%	0.3%	OVER
0.9%	0.4%	OVER
0.6%	0.4%	OVER

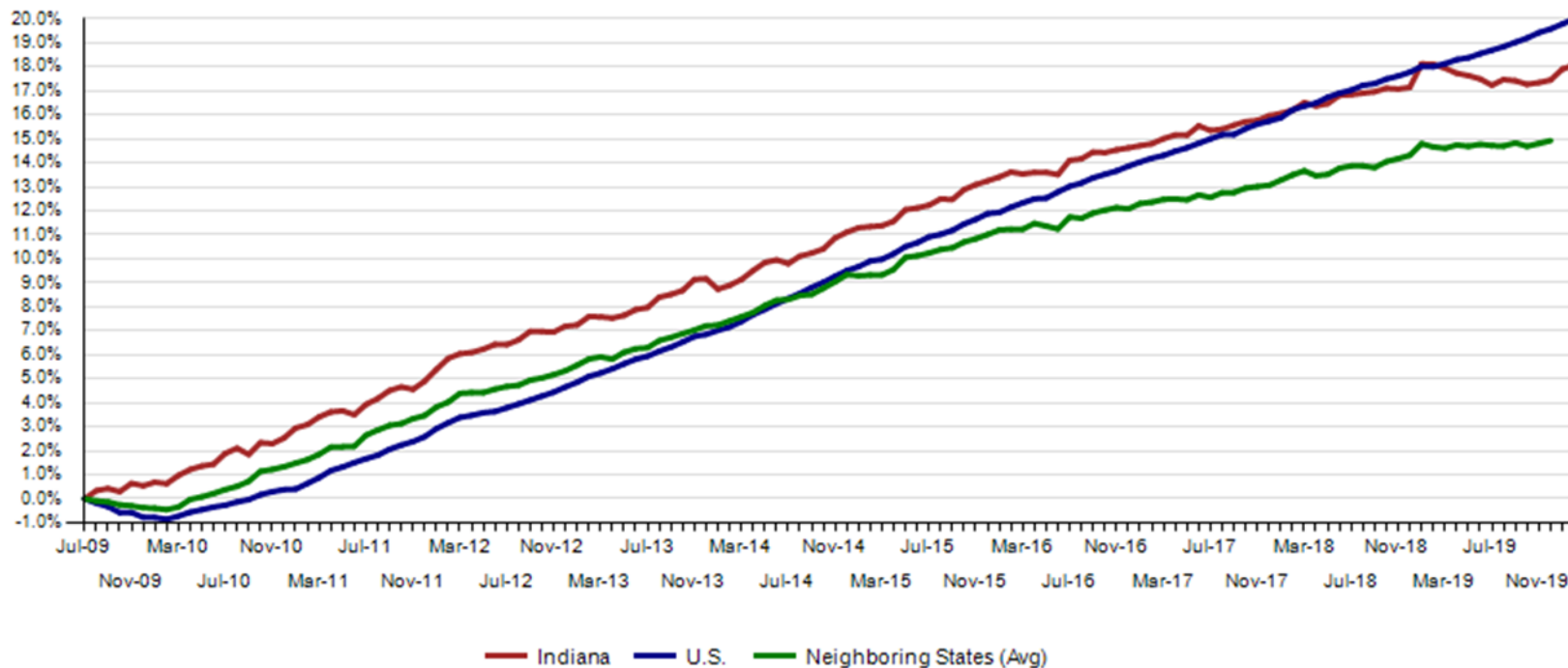
Indiana Year-to-Year	U.S. Year-to-Year	Indiana vs U.S. Change
1.6%	2.8%	UNDER
0.9%	3.1%	UNDER
1.7%	2.8%	UNDER
-1.8%	0.2%	UNDER
-0.8%	1.9%	UNDER
1.4%	1.8%	UNDER
3.4%	3.0%	OVER
-0.6%	2.4%	UNDER
-0.1%	0.5%	UNDER
-0.6%	0.2%	UNDER
1.4%	1.5%	UNDER
-0.3%	1.3%	UNDER
0.0%	1.7%	UNDER
0.8%	1.2%	UNDER
0.1%	1.6%	UNDER

Source: Current Employment Statistics (seasonally adjusted)

Indiana Private Sector Employment Growth Since July 2009

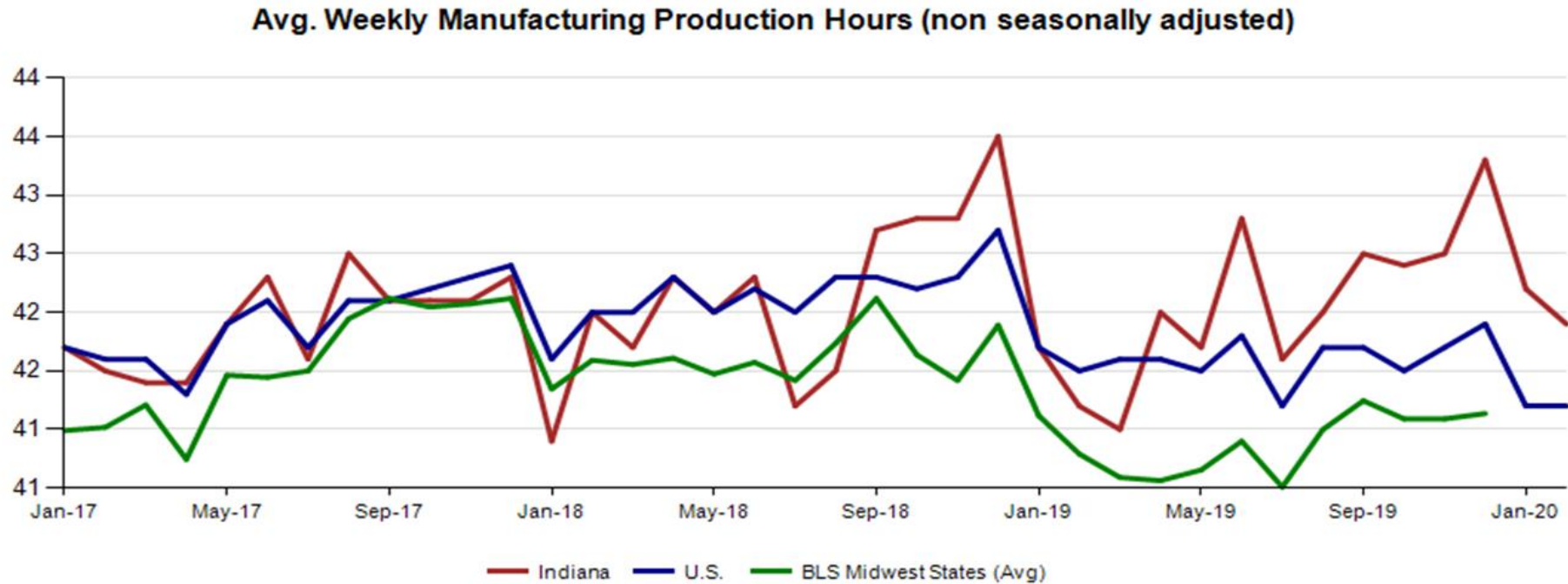
Indiana is trailing the U.S. in private job growth since July 2009. The U.S. has grown by 20.0% while Indiana has grown by 18.1%.

Private Sector Job Growth Since the Low Point of Employment in Indiana



Avg. Weekly Manufacturing Production Hours

February 2020 average weekly hours for Indiana manufacturing production hours decreased by 0.3 to 41.9 hours. National manufacturing remained at 41.2 weekly hours, and Midwest states remained 41.1 hours per week (January 2019 data).



Monthly Labor Force Report

Jobs Data for February 2020

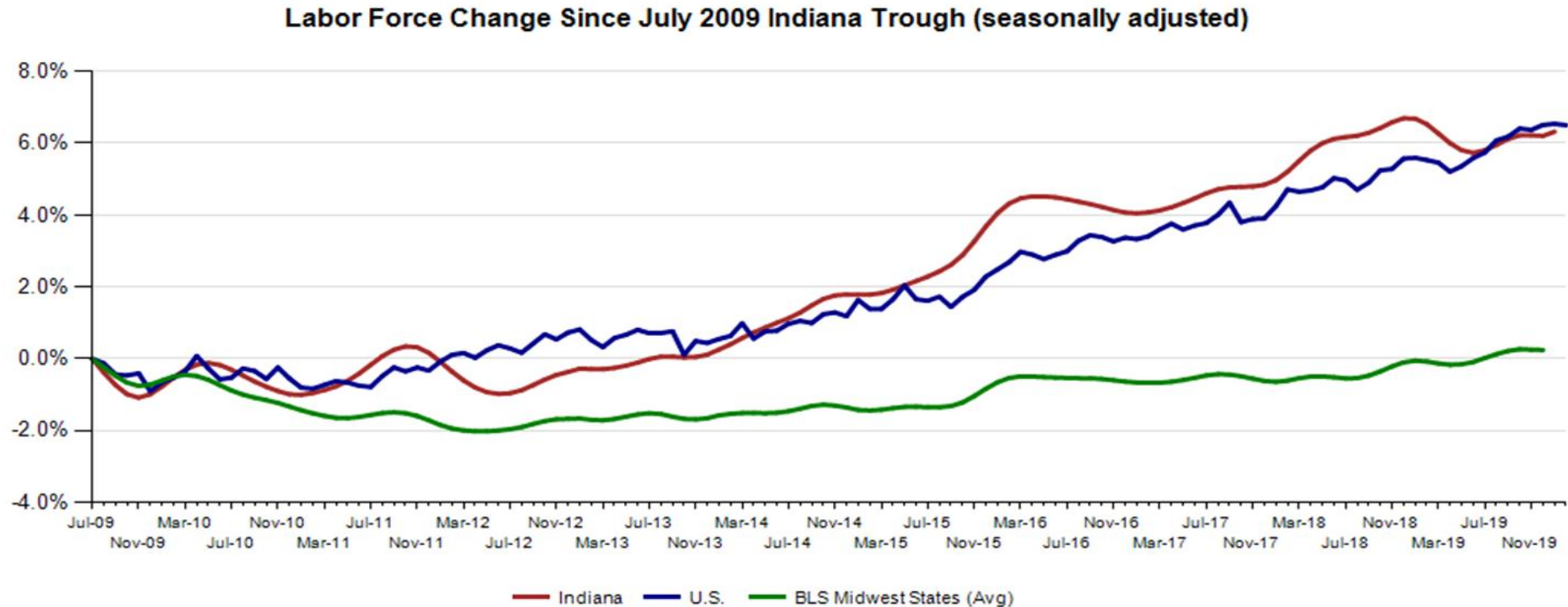
Month NSA	Labor Force	Employed	Unemployed	IN Rate	Total NonFarm	Total Private	Regular UI Claims
Dec-16	3,288,631	3,161,080	127,551	3.9	3,118,700	2,681,300	24,599
Feb-20	3,392,051	3,278,102	113,949	3.4	3,138,800	2,697,100	24,795
Change	103,420	117,022	(13,602)	(0.5)	20,100	15,800	196

Month SA	Labor Force	Employed	Unemployed	IN Rate	Total NonFarm	Total Private	Regular UI Claims
Dec-16	3,320,863	3,187,493	133,370	4.0	3,094,300	2,667,700	24,599
Feb-20	3,396,036	3,290,859	105,177	3.1	3,181,300	2,748,000	24,795
Change	75,173	103,366	(28,193)	(0.9)	87,000	80,300	196

Indiana Labor Force Pct. Growth Since July '09 Indiana Trough

February 2020 Indiana Seasonally Adjusted Labor Force stands at 3,396,036.

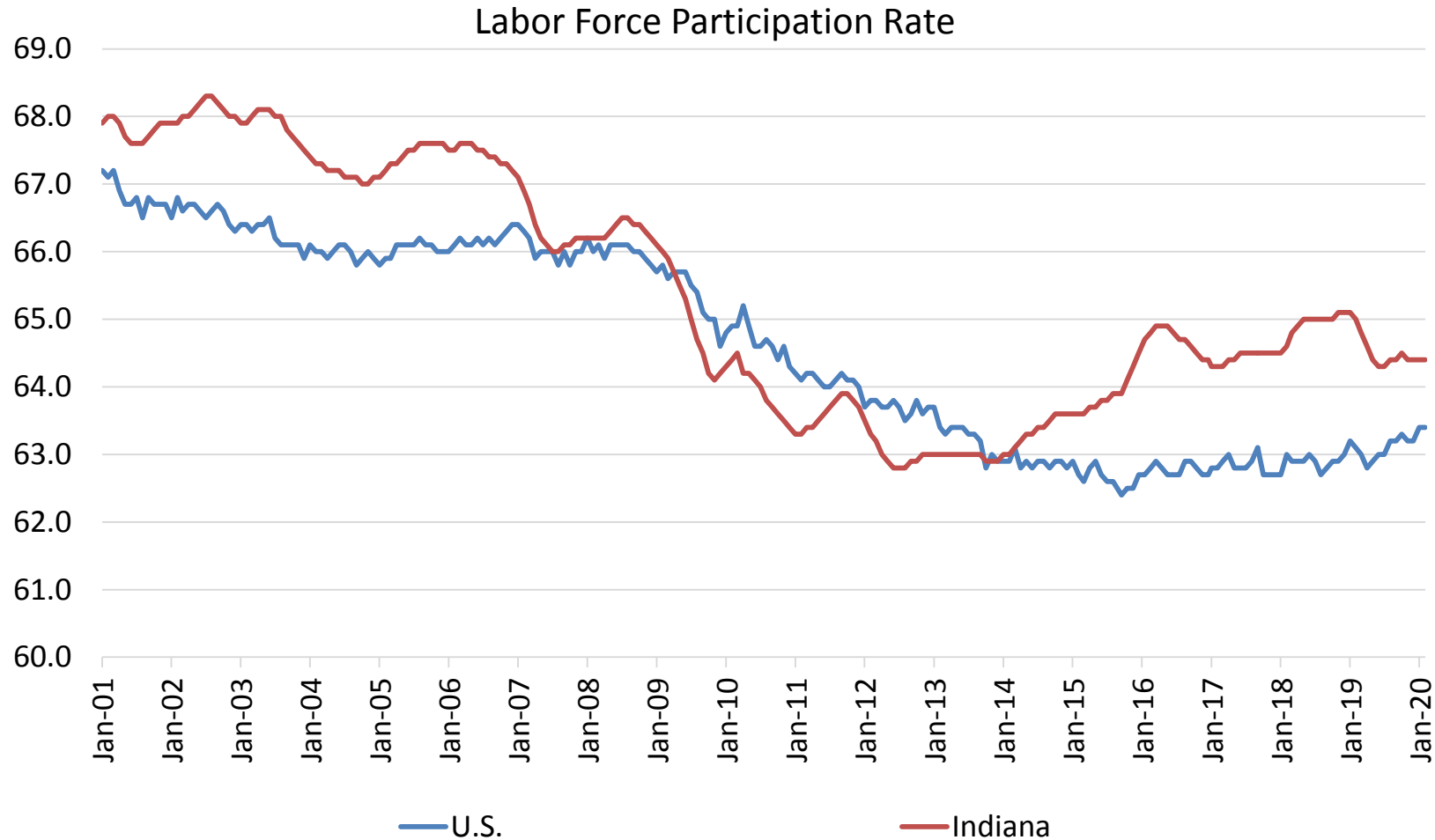
- Employed labor force **increased 3,114** over the month.
- Unemployment **decreased** by 1,599 over the month.



Source: Current Employment Statistics (seasonally adjusted)

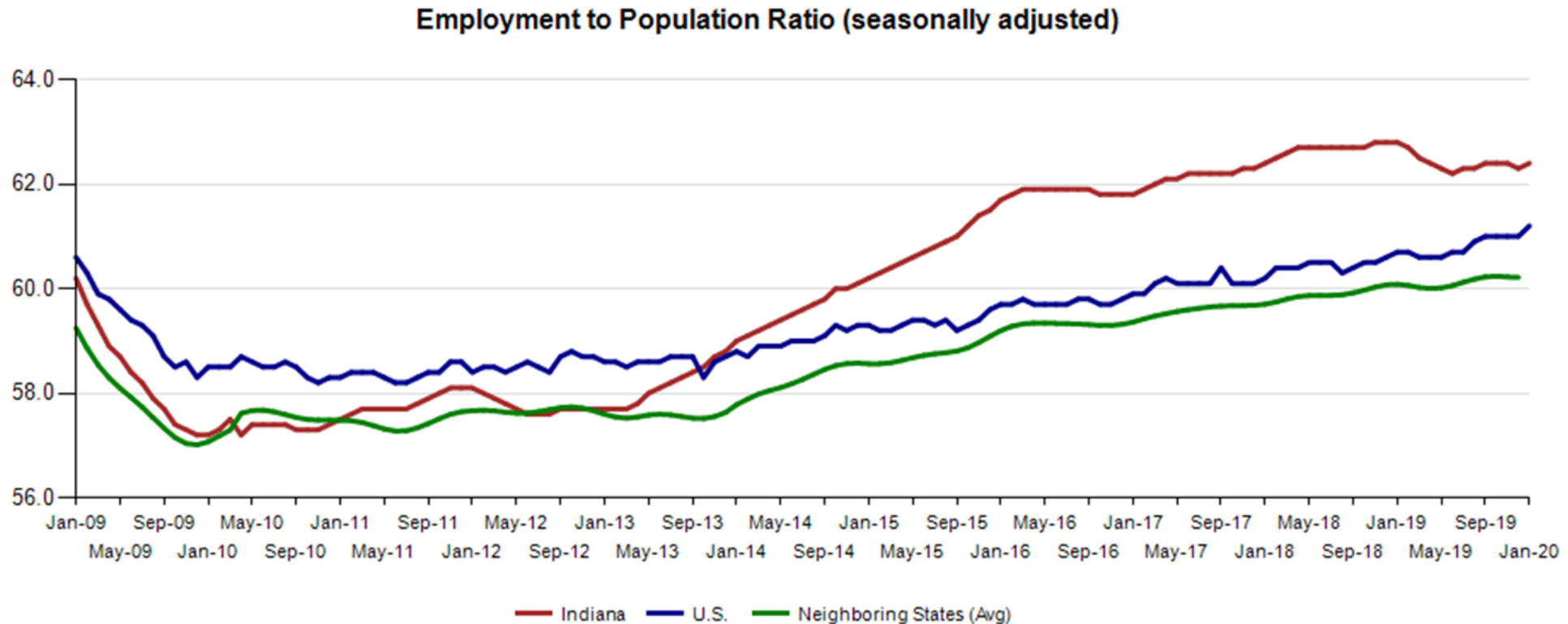
Indiana Labor Force Participation Rate Compared to U.S.

Indiana is at 64.4% compared to U.S. at 63.4%



Employment to Population Ratio (seasonally adjusted)

The Indiana Employment to Population Ratio for February 2020 is 62.4% compared to the U.S. at 61.1% and border states at 60.2% (December)



Alternative Measures of Labor Underutilization 2019 Annual Averages

State	U-1	U-2	U-3	U-4	U-5	U-6
Illinois	1.6	2.1	4.1	4.3	4.9	7.7
Indiana	0.9	1.8	3.5	3.7	4.3	6.6
Kentucky	1.4	1.9	4.3	4.6	5.5	7.9
Michigan	1.4	1.9	4.1	4.4	4.9	7.6
Minnesota	0.8	1.8	3.2	3.2	3.7	5.9
Ohio	1.2	1.8	4.2	4.4	5.1	8.1
Wisconsin	0.9	1.7	3.3	3.4	3.9	5.8
United States	1.1	1.5	3.5	3.7	4.2	7.0

The six state measures are based on the same definitions as those published for the U.S.:

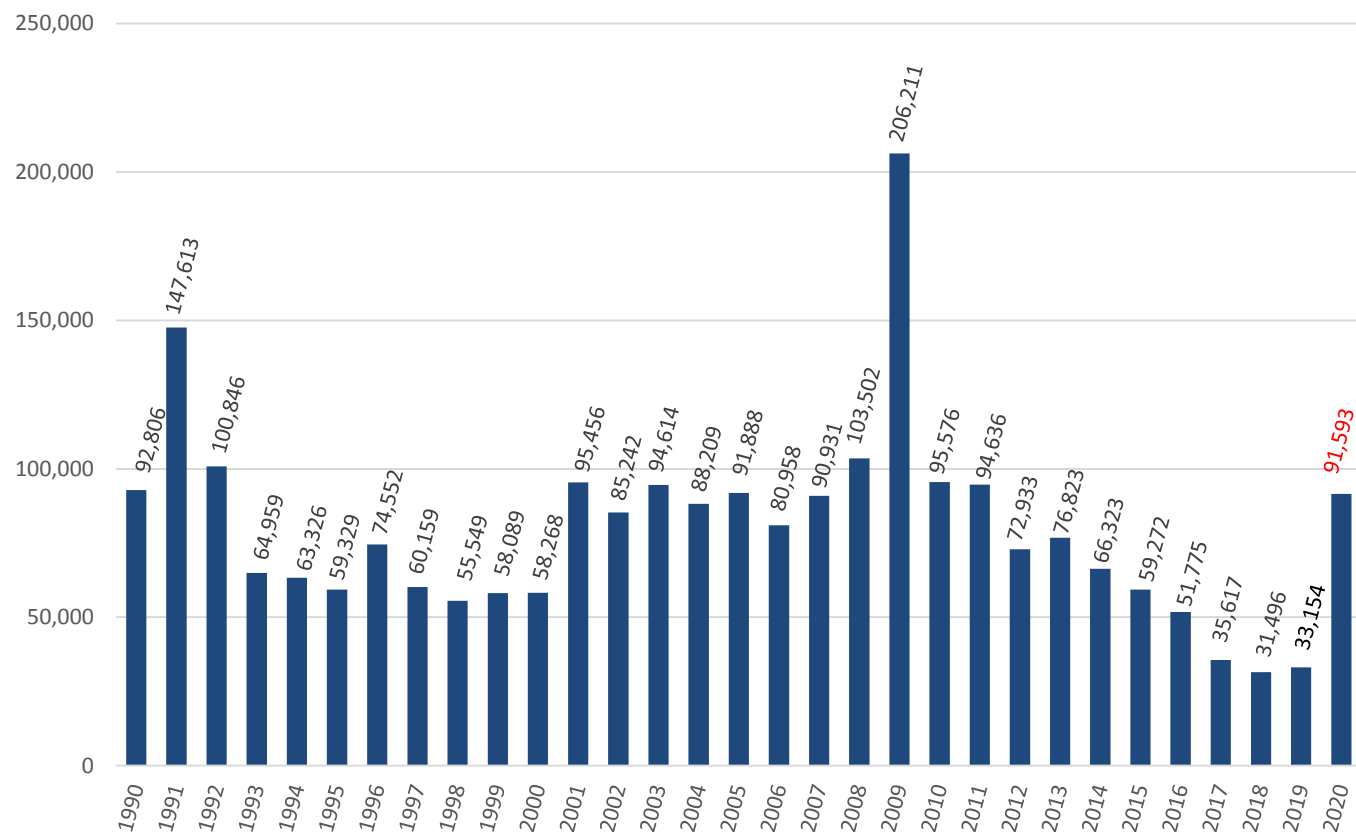
- U-1, persons unemployed 15 weeks or longer, as a percent of the civilian labor force;
- U-2, job losers and persons who completed temporary jobs, as a percent of the civilian labor force;
- U-3, total unemployed, as a percent of the civilian labor force (this is the definition used for the official unemployment rate);
- U-4, total unemployed plus discouraged workers, as a percent of the civilian labor force plus discouraged workers;
- U-5, total unemployed, plus discouraged workers, plus all other marginally attached workers, as a percent of the civilian labor force plus all marginally attached workers; and
- U-6, total unemployed, plus all marginally attached workers, plus total employed part time for economic reasons, as a percent of the civilian labor force plus all marginally attached workers.

Midwest Comparison Rates: Seasonally Adjusted Over the Year and Over the Month

	Feb-19	Jan-20	Feb-20	Monthly change	Yearly change
Indiana	3.5%	3.1%	3.1%	0.0%	-0.4%
U.S.	3.8%	3.6%	3.5%	-0.1%	-0.3%
Illinois	4.3%	3.5%	3.4%	-0.1%	-0.9%
Kentucky	4.2%	4.3%	4.2%	-0.1%	0.0%
Michigan	4.2%	3.8%	3.6%	-0.2%	-0.6%
Minnesota	3.2%	3.2%	3.1%	-0.1%	-0.1%
Ohio	4.2%	4.1%	4.1%	0.0%	-0.1%
Wisconsin	3.2%	3.5%	3.5%	0.0%	0.3%

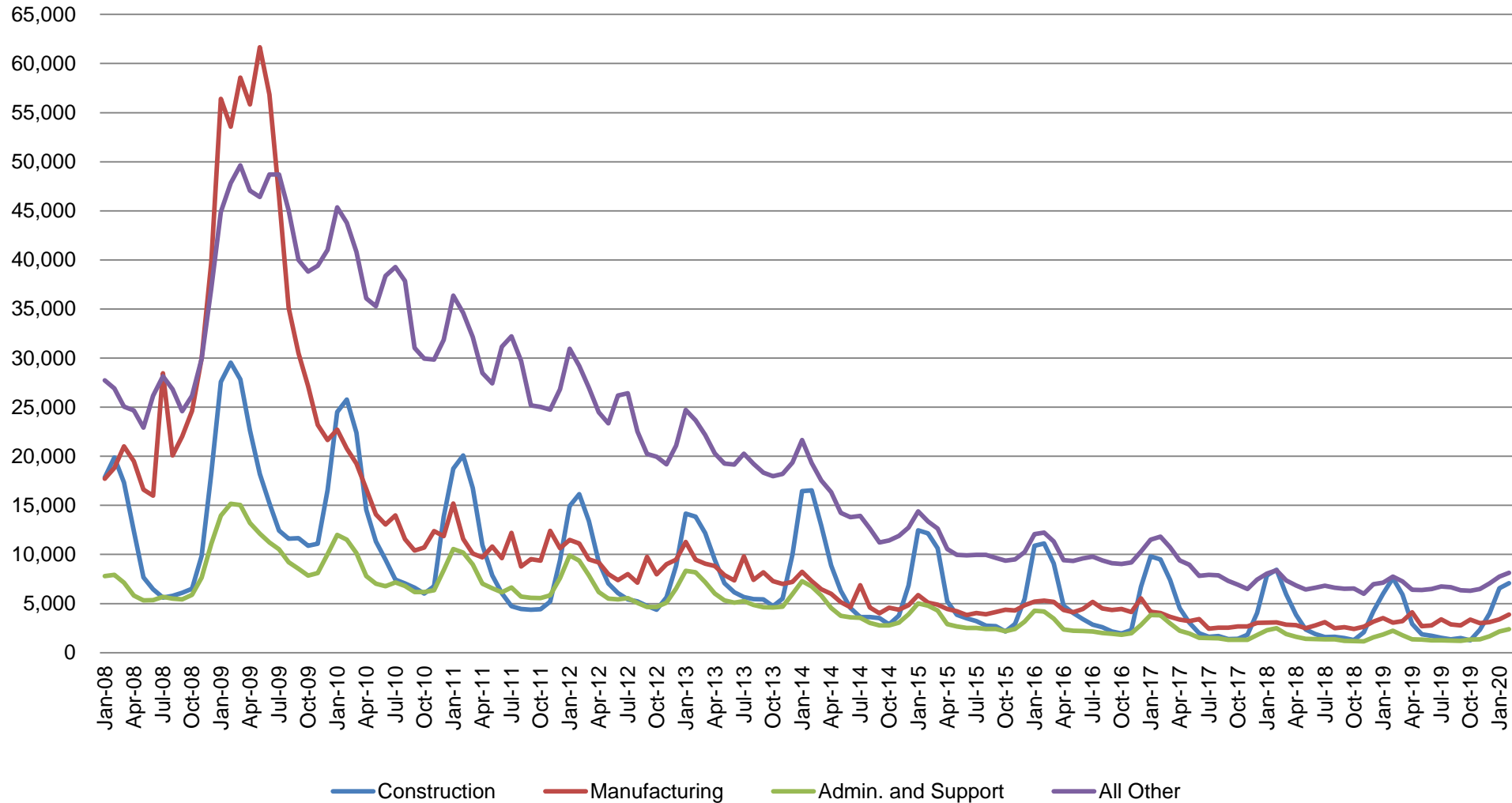
Weekly Initial Claims – Week 11

Total aggregated UI claims for the first 11 weeks of each year as reported to ETA.



Regular UI Claims by Industry

For the Reference Week of Each Month



Source: ETA 203

Indiana: Not in the Labor Force by Gender and Age

March 2019 – February 2020

Current Population Survey, Bureau of Labor Statistics (in 1000s)

	Total	Age			Sex	
		16 to 24 years	25 to 54 years	55 years and over	Men	Women
	Indiana					
Total not in the labor force	1,862.8	301.1	426.4	1,135.3	740.2	1,122.6
Do not want a job now	1,770.2	269.7	395.9	1,104.5	695.8	1,074.4
Want a job	92.7	31.4	30.5	30.7	44.5	48.2
Did not search for work in previous year	61.2	21.2	16.5	23.5	27.2	33.9
Searched for work in previous year	31.5	10.2	14.1	7.2	17.3	14.3
Not available to work now	8.4	3.8	3.6	1.0	4.8	3.6
Available to work now	23.2	6.5	10.5	6.2	12.5	10.7
Reason not currently looking:						
Discouragement over job prospects	7.5	1.0	3.1	3.5	5.0	2.5
Reasons other than discouragement	15.7	5.5	7.4	2.8	7.5	8.2

- Data not available

Source: Table b. Civilians not in the labor force
by sex and age, March 2019-February 2020
(based on CPS) (Numbers in thousands)

Indiana: Labor Force by Education Attainment

March 2019 – February 2020

Current Population Survey, Bureau of Labor Statistics (in 1000s)

	Civilian noninstitutional population	Civilian Labor Force		Employment		Unemployment	
		Total	Rate	Total	Rate	Total	Rate
	Indiana						
Less than a High school diploma	300.9	126.8	42.1	117.8	39.1	9.0	7.1
High school graduates, no college ¹	1,517.9	914.1	60.2	859.1	56.6	55.0	6.0
Some college or associate degree	1,287.4	879.3	68.3	860.7	66.9	18.6	2.1
Bachelor's degree and higher ²	1,352.7	1,044.5	77.2	1,028.8	76.1	15.6	1.5

- Data not available

¹ Includes persons with a high school diploma or equivalent

² Includes person with bachelor's, master's, professional and doctoral degrees

Source: Table f. Employment status of the civilian non-institutional population 25 years and over by educational attainment, March 2019- February 2020 (based on CPS) (Numbers in thousands)

Indiana: Labor Force by Gender and Age

	Civilian labor force participation rate	Unemployment rate
Both Sexes		
All Races		
Age 16+	64.5	3.1
Age 16-19	43.5	8.2
Age 20+	66.0	2.9
White		
Age 16+	64.1	2.9
Age 16-19	46.1	7.3
Age 20+	65.4	2.7
Black		
Age 16+	65.2	4.7
Age 16-19	34.5	12.3
Age 20+	67.4	4.4
Hispanic		
Age 16+	69.7	4.0
Age 16-19	46.7	10.2
Age 20+	72.4	3.5
Male, All Races		
Age 16+	70.9	3.2
Age 20+	72.9	2.9
Female, All Races		
Age 16+	58.4	3.0
Age 20+	59.5	2.9
Male, White		
Age 16+	70.8	3.1
Age 20+	72.4	2.8
Female, White		
Age 16+	57.8	2.8
Age 20+	58.7	2.6
Male, Black		
Age 16+	68.0	4.4
Age 20+	71.2	4.0
Female, Black		
Age 16+	62.7	4.9
Age 20+	64.2	4.7

Source: Table a. Employment status of the civilian non-institutional population by sex, age, race, and Hispanic origin, March 2019-February 2020 (based on CPS) (Numbers in thousands)

Indiana: Labor Force by Gender and Age

March 2019 – February 2020

Current Population Survey, Bureau of Labor Statistics (in 1000s)

	Civilian labor force participation rate	Unemployment rate
Male, All Races		
Age 16-19	44.0	9.7
Age 20-24	80.9	5.3
Age 25-34	90.4	4.1
Age 35-44	93.7	2.1
Age 45-54	89.2	2.7
Age 55-64	70.3	1.6
Age 65+	22.6	2.2
Female, All Races		
Age 16-19	43.0	6.6
Age 20-24	73.4	5.1
Age 25-34	74.1	3.4
Age 35-44	75.0	2.6
Age 45-54	77.5	2.0
Age 55-64	60.9	2.3
Age 65+	16.8	2.8

Source: Table a. Employment status of the civilian non-institutional population by sex, age, race, and Hispanic origin, March 2019-February 2020 (based on CPS) (Numbers in thousands)

Indiana: Duration of Unemployment Part 1

March 2019 – February 2020

Current Population Survey, Bureau of Labor Statistics (in 1000s)

	Total	5 to 14 weeks	15 weeks and over					Median duration (Average of monthly median duration)	Mean duration
			Total	15 to 26 weeks	27 weeks and over				
					Total	27 to 51 weeks	52 weeks and over		
Indiana									
Both Sexes									
All Races	105.9	34.8	32.2	12.6	19.6	8.3	11.3	8.5	18.4
White	84.4	25.9	27.5	11.2	16.3	8.1	8.2	8.8	17.4
Black	14.9	6.7	2.2	0.8	1.4	0.2	1.2	5.5	15.3
Hispanic	10.2	2.6	4.5	2.1	2.4	-	2.4	18.5	24.1
Age 16-19	12.6	3.1	2.2	0.8	1.4	0.4	1.0	13.5	12.0
Age 20+	93.3	31.7	30.0	11.7	18.2	7.9	10.3	9.1	19.2
Male, 16+	58.0	20.3	18.6	8.4	10.2	4.4	5.8	9.2	18.5
Female, 16+	47.9	14.4	13.6	4.2	9.4	3.9	5.5	6.9	18.2

- Data not available

Source: Table d. Unemployed persons by sex, age, race, Hispanic origin, and duration of unemployment, March 2019-February 2020 (based on CPS) (Numbers in thousands)

Indiana: Duration of Unemployment Part 2

March 2019 – February 2020

Current Population Survey, Bureau of Labor Statistics (in 1000s)

	Duration of unemployment							Aggregate weeks of unemployment
	Less than 5 weeks	5-6	7-10	11-14	15-26	27-51	52+	
Indiana								
Both Sexes								
All Races	38.9	5.8	16.2	12.8	12.6	8.3	11.3	1,946.4
White	31.1	5.4	12.0	8.5	11.2	8.1	8.2	1,472.4
Black	5.9	-	3.5	3.2	0.8	0.2	1.2	228.5
Hispanic	3.1	0.3	1.6	0.7	2.1	-	2.4	245.8
Age 16-19	7.2	0.7	1.3	1.0	0.8	0.4	1.0	150.3
Age 20+	31.7	5.0	14.9	11.8	11.7	7.9	10.3	1,796.1
Male, 16+	19.1	2.3	9.7	8.4	8.4	4.4	5.8	1,072.9
Female, 16+	19.8	3.5	6.6	4.4	4.2	3.9	5.5	873.5

- Data not available

Source: Table d. Unemployed persons by sex,
age, race, Hispanic origin, and duration of
unemployment, March 2019-February 2020
(based on CPS) (Numbers in thousands)

Purchasing Managers' Index (PMI)

- The Purchasing Managers Index (PMI) is a measure of the prevailing direction of economic trends in manufacturing.
- The PMI is based on a monthly survey of supply chain managers across 19 industries, covering both upstream and downstream activity.
- The value and movements in the PMI and its components can provide useful insight to business decision makers, market analysts, and investors, and is a leading indicator of overall economic activity in the U.S.

PMI is a number from 0 to 100. A PMI above 50 represents an expansion when compared with the previous month. A PMI reading under 50 represents a contraction.

Index	Series Index Feb	Series Index Jan	Percentage Point Change	Direction	Rate of Change	Trend* (Months)
PMI®	50.1	50.9	-0.8	Growing	Slower	2
New Orders	49.8	52	-2.2	Contracting	From Growing	1
Production	50.3	54.3	-4	Growing	Slower	2
Employment	46.9	46.6	0.3	Contracting	Slower	7
Supplier Deliveries	57.3	52.9	4.4	Slowing	Faster	4
Inventories	46.5	48.8	-2.3	Contracting	Faster	9
Customers' Inventories	41.8	43.8	-2	Too Low	Faster	41
Prices	45.9	53.3	-7.4	Decreasing	From Increasing	1
Backlog of Orders	50.3	45.7	4.6	Growing	From Contracting	1
New Export Orders	51.2	53.3	-2.1	Growing	Slower	2
Imports	42.6	51.3	-8.7	Contracting	From Growing	1
OVERALL ECONOMY				Growing	Slower	130
Manufacturing Sector				Growing	Slower	2