

09/18/2019

Indiana's Employment and Labor Force Estimates

August 2019

INDIANA
DEPARTMENT OF
WORKFORCE
DEVELOPMENT

Key Points: August 2019

Unemployment Rate

- Indiana = 3.3%
- U.S. = 3.7%

Indiana's rate is down 0.2% over the year from August 2018.

Indiana's Labor Force

- Over the month Labor Force decreased 2,135 due to a increase in employment of 2,125 and a decrease in unemployment of 4,260.
- Over the year, decreased by 1,289.
- Indiana's labor force participation rate fell by 0.1% over the month to 64.6%. This remains above the U.S. labor force participation rate of 63.2%.

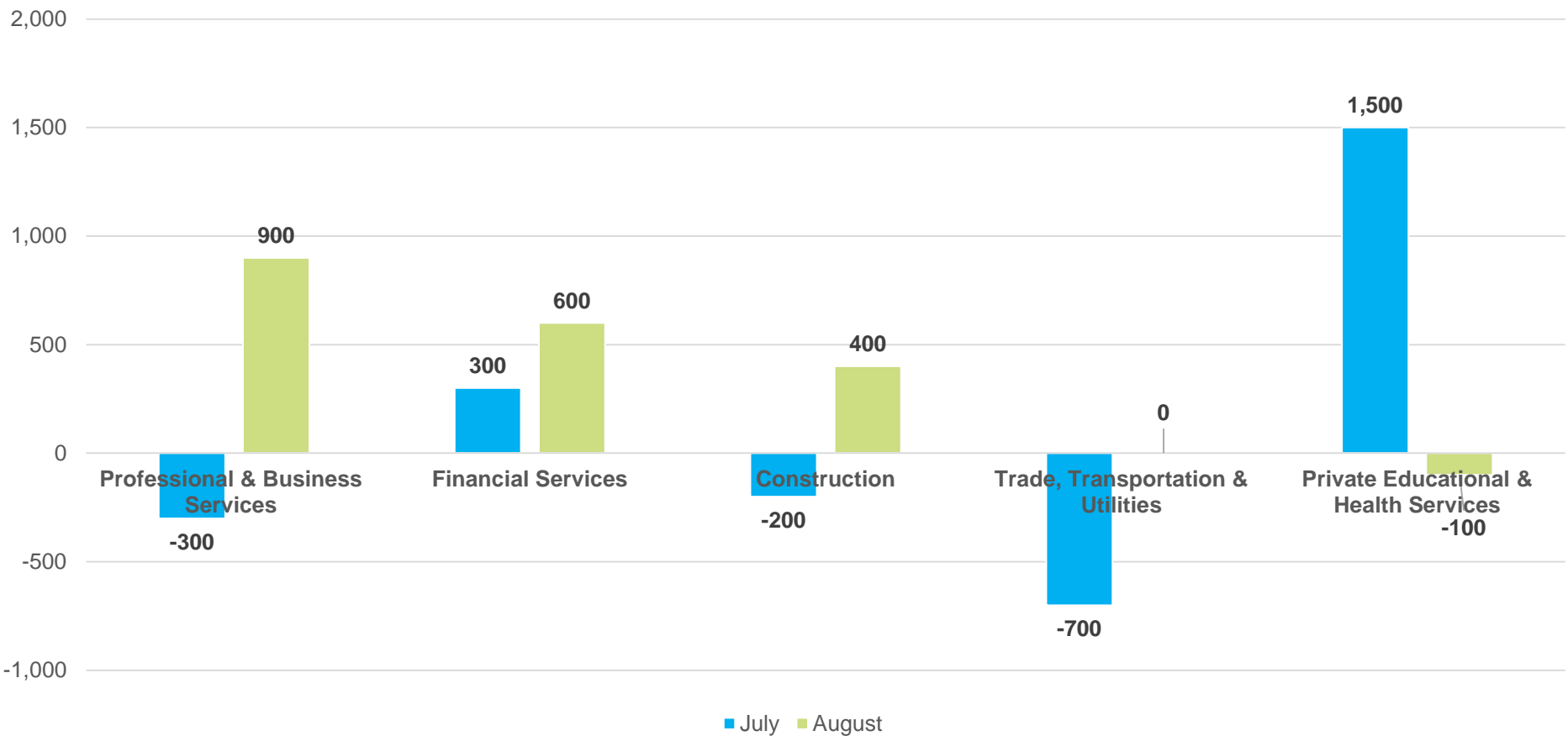
For historical labor force participation data, [visit this link](#).



Key Points: August 2019

Indiana's Private Employment

- decreased by -2,100 over the month and had gains of 23,000 over the year.
- August private employment = 2,739,000



Revisions to July 2019 Estimates

Revisions to July 2019 Estimates						
INDUSTRY TITLE	Jun	Jul Prel	Jul Rev	Revision	Chg from Jun	Pre Chg from Jun
Total Nonfarm	3172.5	3170.6	3172.0	1.4	-0.5	-1.9
Total Private	2746.2	2744.9	2741.1	-3.8	-5.1	-1.3
Goods Producing	697.1	697.0	695.9	-1.1	-1.2	-0.1
Service-Providing	2475.4	2473.6	2476.1	2.5	0.7	-1.8
Private Service Providing	2049.1	2047.9	2045.2	-2.7	-3.9	-1.2
Construction	148.7	148.5	148.4	-0.1	-0.3	-0.2
Manufacturing	542.1	542.2	541.2	-1.0	-0.9	0.1
Trade, Transportation, and Utilities	596.7	596.0	596.0	0.0	-0.7	-0.7
Wholesale Trade	121.1	120.8	120.3	-0.5	-0.8	-0.3
Retail Trade	316.1	315.0	315.7	0.7	-0.4	-1.1
Transportation, Warehousing, and Utilities	159.5	160.2	160.0	-0.2	0.5	0.7
Information	27.8	27.8	27.7	-0.1	-0.1	0.0
Financial Activities	137.7	138.0	138.3	0.3	0.6	0.3
Finance and Insurance	102.8	102.8	103.1	0.3	0.3	0.0
Real Estate and Rental and Leasing	34.9	35.2	35.2	0.0	0.3	0.3
Professional and Business Services	349.7	349.4	349.8	0.4	0.1	-0.3
Professional, Scientific, and Technical Services	124.7	125.2	124.7	-0.5	0.0	0.5
Management of Companies and Enterprises	33.9	33.9	33.7	-0.2	-0.2	0.0
Admin & Support & Waste Mgmt & Remediation Services	191.1	190.3	191.4	1.1	0.3	-0.8
Education and Health Services	493.7	495.2	493.9	-1.3	0.2	1.5
Educational Services	70.9	71.9	71.0	-0.9	0.1	1.0
Health Care and Social Assistance	422.8	423.3	422.9	-0.4	0.1	0.5
Leisure and Hospitality	311.4	309.9	307.6	-2.3	-3.8	-1.5
Other Services	132.1	131.6	131.9	0.3	-0.2	-0.5
Government	426.3	425.7	430.9	5.2	4.6	-0.6



Midwestern Sector Employment Change Compared to Indiana

Percentage growth ranking comparison of Midwestern States and selected industry sectors since the Indiana low point. (July data)

July	TNF	Private	Construction	Manufacturing	Professional & Business Services	Education and Health Services
Illinois	31	31	42	31	28	35
Indiana	18	19	17	4	13	23
Kentucky	25	23	33	7	19	36
Michigan	16	17	11	2	16	48
Minnesota	22	24	8	26	35	25
Ohio	26	26	25	17	37	39
Wisconsin	34	34	20	21	26	43
	Percent Change growth rankings since trough					

- Since July 2009, three Midwestern States were among the top 10 in manufacturing growth over this time.

Comparing Local Area Unemployment Statistics (LAUS) and Current Employment Statistics (CES)

LAUS (Labor Force by Residence)

This counts people, not jobs, and is...

- An estimate of employment based on where the employee lives, rather than where they work
- Used in calculating the labor force

CES (Employment by Job)

This counts jobs, not people, and is...

- An estimate of employment based on the location of the job regardless of the worker's residence
- Also called nonag wage and salary or nonfarm employment
- Used in Quarterly Census of Employment and Wages (QCEW), Occupational Employment Statistics (OES) and CES data

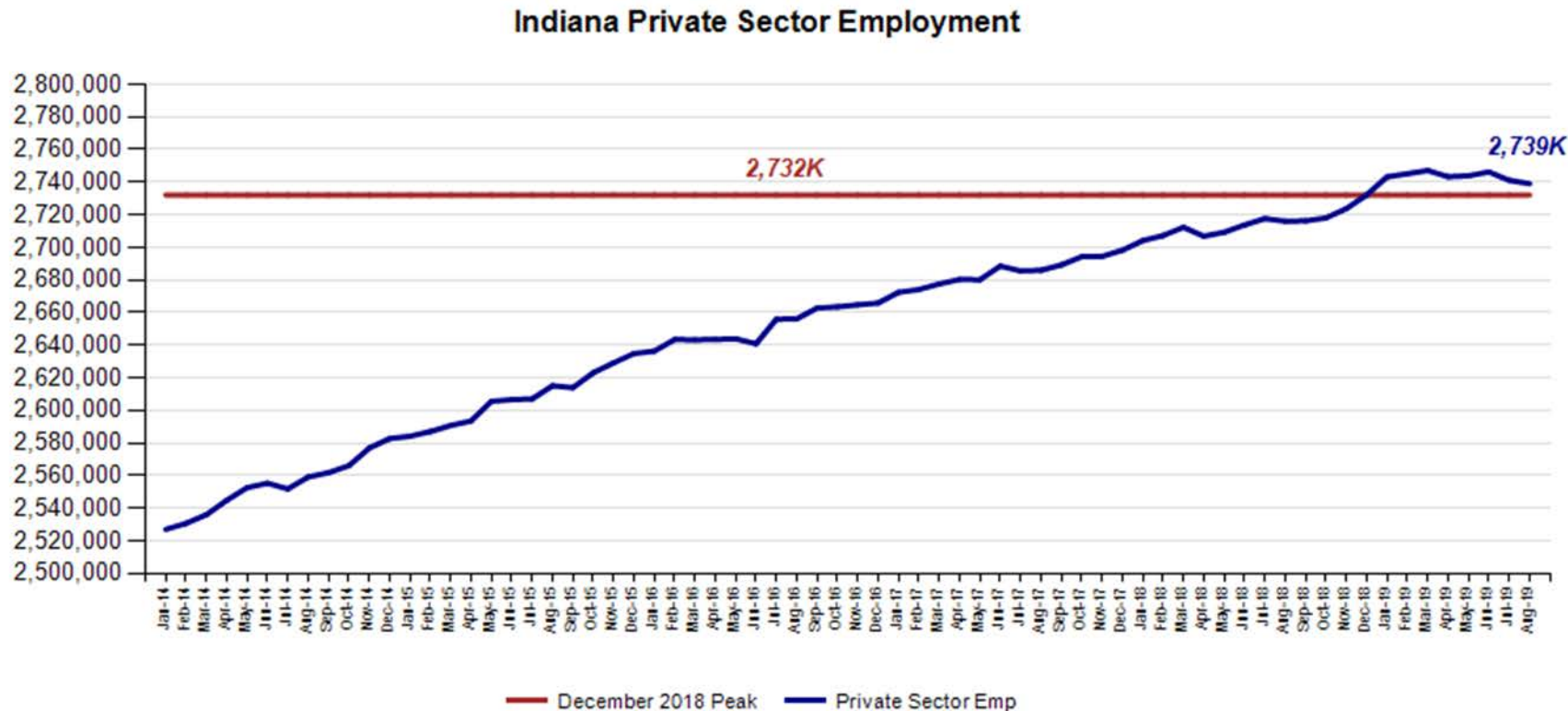
CES Monthly Jobs Report

INDIANA
DEPARTMENT OF
WORKFORCE
DEVELOPMENT

MONTHLY
BRIEFING

Indiana Private Sector Employment

August total private employment is 6,900 above the December 2018 peak.



Indiana Private Sector Employment Change

August 2019 decreased by 2,100 jobs over the month and is up 23,000 over the year.

IN Employment Change Over the Month, Year-to-Date and Over the Year (seasonally adjusted)

Industry	August 2018	December 2018	July 2019	August 2019	Month Change	Y-to-D Change	Y-to-Y Change
Private Educational & Health Services	474.5	484.4	493.9	493.8	-0.1	9.4	19.3
.....Private Educational Services	65.0	66.4	71.0	72.2	1.2	5.8	7.2
.....Health Care & Social Assistance	409.5	418.0	422.9	421.6	-1.3	3.6	12.1
Manufacturing	542.7	544.3	541.2	539.7	-1.5	-4.6	-3.0
Professional & Business Services	343.0	344.2	349.8	350.7	0.9	6.5	7.7
Financial Activities	139.3	138.4	138.3	138.9	0.6	0.5	-0.4
Construction	140.7	147.0	148.4	148.8	0.4	1.8	8.1
Leisure and Hospitality	310.7	308.9	307.6	306.0	-1.6	-2.9	-4.7
Trade, Transportation & Utilities	597.6	597.5	596.0	596.0	0.0	-1.5	-1.6
.....Trade	442.6	440.2	436.0	436.5	0.5	-3.7	-6.1
.....Transportation, Warehousing & Utilities	155.0	157.3	160.0	159.5	-0.5	2.2	4.5
All Other	167.5	167.4	165.9	165.1	-0.8	-2.3	-2.4
Total Private	2,716.0	2,732.1	2,741.1	2,739.0	-2.1	6.9	23.0
Government (Includes Public Schools & Hospitals)	427.5	429.0	430.9	424.5	-6.4	-4.5	-3.0
Total Nonfarm	3,143.5	3,161.1	3,172.0	3,163.5	-8.5	2.4	20.0
United States Total Private	126,973.0	127,790.0	128,854.0	128,950.0	96.0	1,160.0	1,977.0

- Professional & Business Services **gained 900** jobs over the month
Financial Activities **gained 600**.
- Leisure and Hospitality **lost 1,600** jobs over the month.

Source: Current Employment Statistics (seasonally adjusted)

For month to month change, [visit this link](#).

Indiana Private Sector Employment Change From Peak and Trough

August 2019 estimates show Indiana has gained 414,800 jobs since July 2009.

IN Statewide Estimates (seasonally adjusted) -- August 2019

Supersector	Private Empl. Peak Dec 2018	Private Empl. Trough July 2009	July 2019	August 2019	Month to Month Change	Change Since Peak	Change Since Trough	% Month to Month Change
Private Educational & Health Services	484.4	411.1	493.9	493.8	-0.1	9.4	82.7	0.0%
.....Private Educational Services	66.4	63.3	71.0	72.2	1.2	5.8	8.9	1.7%
.....Health Care & Social Assistance	418.0	347.8	422.9	421.6	-1.3	3.6	73.8	-0.3%
Manufacturing	544.3	426.7	541.2	539.7	-1.5	-4.6	113.0	-0.3%
Professional & Business Services	344.2	256.9	349.8	350.7	0.9	6.5	93.8	0.3%
Financial Activities	138.4	130.7	138.3	138.9	0.6	0.5	8.2	0.4%
Construction	147.0	117.4	148.4	148.8	0.4	1.8	31.4	0.3%
Leisure and Hospitality	308.9	276.8	307.6	306.0	-1.6	-2.9	29.2	-0.5%
Trade, Transportation & Utilities	597.5	546.0	596.0	596.0	0.0	-1.5	50.0	0.0%
.....Trade	440.2	421.5	436.0	436.5	0.5	-3.7	15.0	0.1%
.....Transportation, Warehousing & Utilities	157.3	124.5	160.0	159.5	-0.5	2.2	35.0	-0.3%
All Other	167.4	158.6	165.9	165.1	-0.8	-2.3	6.5	-0.5%
Total Private	2,732.1	2,324.2	2,741.1	2,739.0	-2.1	6.9	414.8	-0.1%
Government (Includes Public Schools & Hospitals)	429.0	434.5	430.9	424.5	-6.4	-4.5	-10.0	-1.5%
Total Nonfarm	3,161.1	2,758.7	3,172.0	3,163.5	-8.5	2.4	404.8	-0.3%
United States Total Private	127,790.0	108,164.0	128,854.0	128,950.0	96.0	1,160.0	20,786.0	0.1%

- Manufacturing has accounted for 113,000 of this **increase** of jobs.
- Professional & Business Services **increased** by 93,800 jobs over this time frame.

For historical data, [visit this link.](#)

Indiana Private Sector Employment Change Compared to U.S.

August 2019 Indiana private sector was down -0.1% and the U.S. grew by 0.1%.

IN Employment Change Compared to the U.S.

Industry	Indiana Month to Month	U.S. Month to Month	Indiana vs U.S. Change
Private Educational & Health Services	0.0%	0.1%	UNDER
.....Private Educational Services	1.7%	-0.1%	OVER
.....Health Care & Social Assistance	-0.3%	0.2%	UNDER
Manufacturing	-0.3%	0.0%	UNDER
Professional & Business Services	0.3%	0.2%	OVER
Financial Activities	0.4%	0.2%	OVER
Construction	0.3%	0.2%	OVER
Leisure and Hospitality	-0.5%	0.1%	UNDER
Trade, Transportation & Utilities	0.0%	0.0%	OVER
.....Trade	0.1%	0.0%	OVER
.....Transportation, Warehousing & Utils	-0.3%	0.0%	UNDER
All Other	-0.5%	-0.1%	UNDER
Total Private	-0.1%	0.1%	UNDER
Government (Includes Public Schools & Hospitals)	-1.5%	0.2%	UNDER
Total Nonfarm	-0.3%	0.1%	UNDER

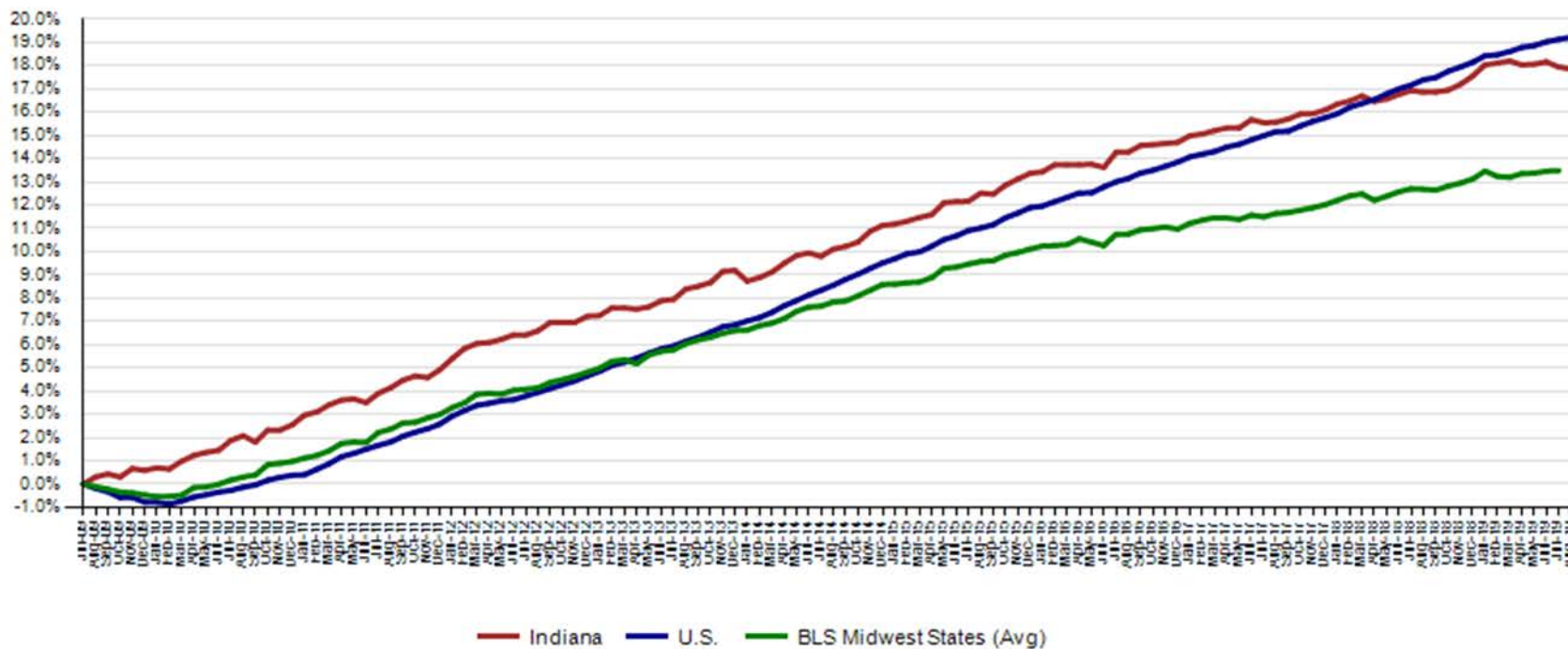
Indiana Year-to-Date	U.S. Year-to-Date	Indiana vs U.S. Change
1.9%	1.7%	OVER
8.7%	1.6%	OVER
0.9%	1.8%	UNDER
-0.8%	0.3%	UNDER
1.9%	1.3%	OVER
0.4%	0.9%	UNDER
1.2%	1.5%	UNDER
-0.9%	1.0%	UNDER
-0.3%	0.1%	UNDER
-0.8%	-0.1%	UNDER
1.4%	0.8%	OVER
-1.4%	0.7%	UNDER
0.3%	0.9%	UNDER
-1.0%	0.5%	UNDER
0.1%	0.8%	UNDER

Indiana Year-to-Year	U.S. Year-to-Year	Indiana vs U.S. Change
4.1%	2.4%	OVER
11.1%	1.2%	OVER
3.0%	2.6%	OVER
-0.6%	1.1%	UNDER
2.2%	2.1%	OVER
-0.3%	1.3%	UNDER
5.8%	2.4%	OVER
-1.5%	1.9%	UNDER
-0.3%	0.4%	UNDER
-1.4%	0.0%	UNDER
2.9%	2.0%	OVER
-1.4%	1.1%	UNDER
0.8%	1.6%	UNDER
-0.7%	0.4%	UNDER
0.6%	1.4%	UNDER

Indiana Private Sector Employment Growth Since August 2009

Indiana is trailing the U.S. in private job growth since August 2009. The U.S. has grown by 19.2% while Indiana has grown by 17.8%.

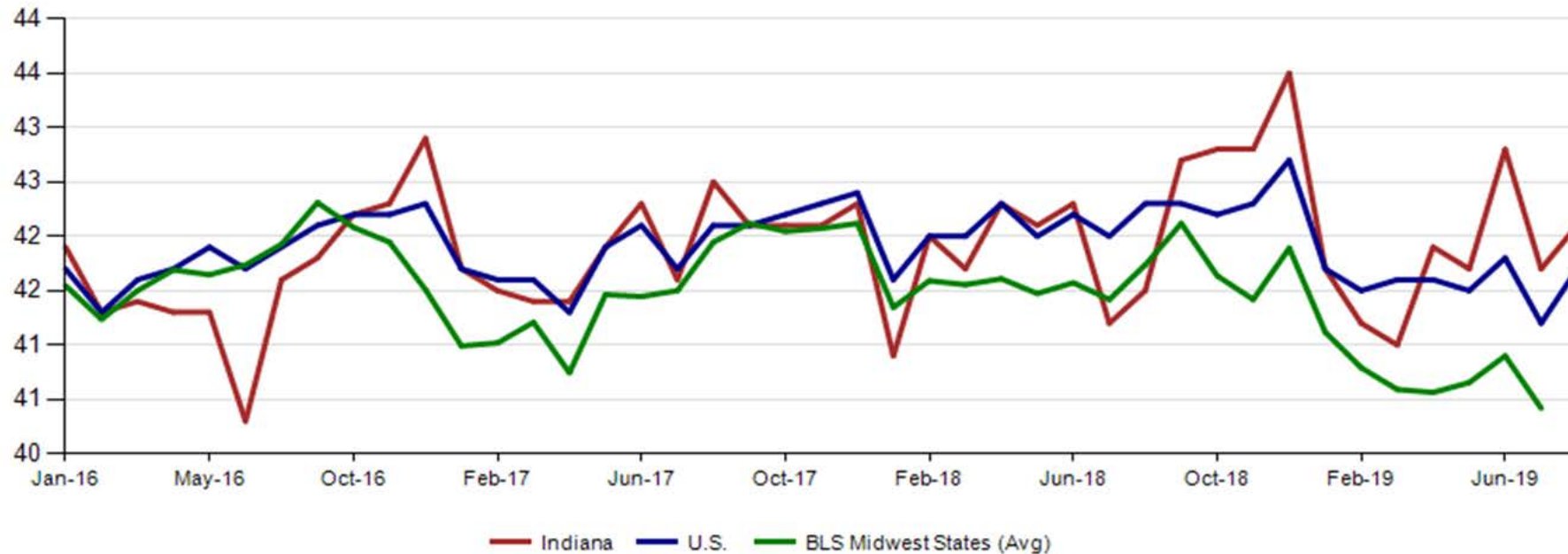
Private Sector Job Growth Since the Low Point of Employment in Indiana



Avg. Weekly Manufacturing Production Hours

August 2019 average weekly hours for Indiana manufacturing production hours decreased by 0.6 of an hour to 42.1 hours. National manufacturing increased by 0.4 to 41.7 weekly hours, and Midwest states decreased 0.5 to 40.4 hours per week (July 2019 data).

Avg. Weekly Manufacturing Production Hours (non seasonally adjusted)



LAUS Monthly Labor Force Report

INDIANA
DEPARTMENT OF
WORKFORCE
DEVELOPMENT

MONTHLY
BRIEFING

Current Employment Statistics (CES) and Local Area Unemployment Statistics (LAUS)

Point-in-Time Comparison

Month NSA	Labor Force	Employed	Unemployed	IN Rate	Total NonFarm	Total Private	Regular UI Claims
Dec-16	3,289,568	3,161,214	128,354	3.9	3,118,600	2,681,200	24,599
Aug-19	3,398,091	3,288,977	109,114	3.2	3,179,600	2,759,200	14,048
Change	108,523	127,763	(19,240)	(0.7)	61,000	78,000	(10,551)

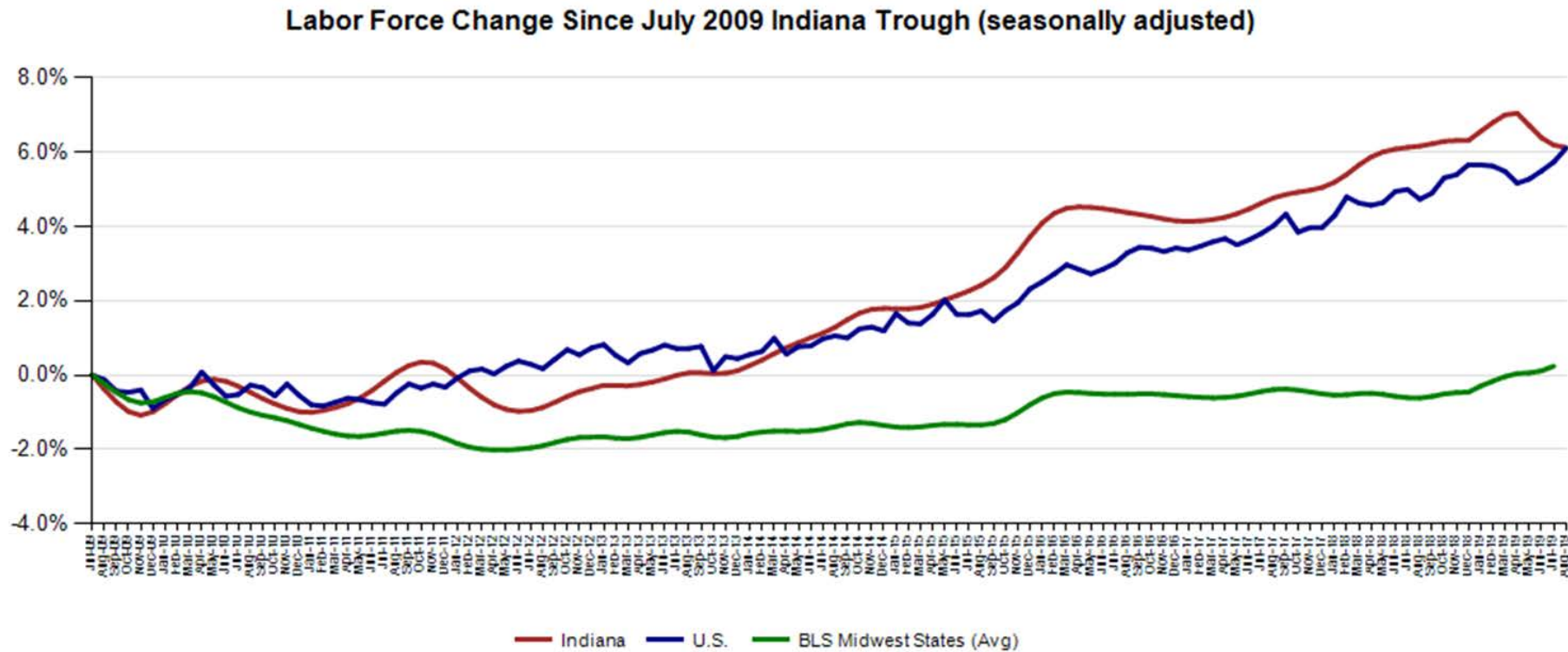
Month SA	Labor Force	Employed	Unemployed	IN Rate	Total NonFarm	Total Private	Regular UI Claims
Dec-16	3,323,233	3,190,341	132,892	4.0	3,092,100	2,665,800	24,599
Aug-19	3,386,094	3,273,730	112,364	3.3	3,163,500	2,739,000	14,938
Change	62,861	83,389	(20,528)	(0.7)	71,400	73,200	(10,551)



Indiana Labor Force Pct. Growth Since July '09 Indiana Trough

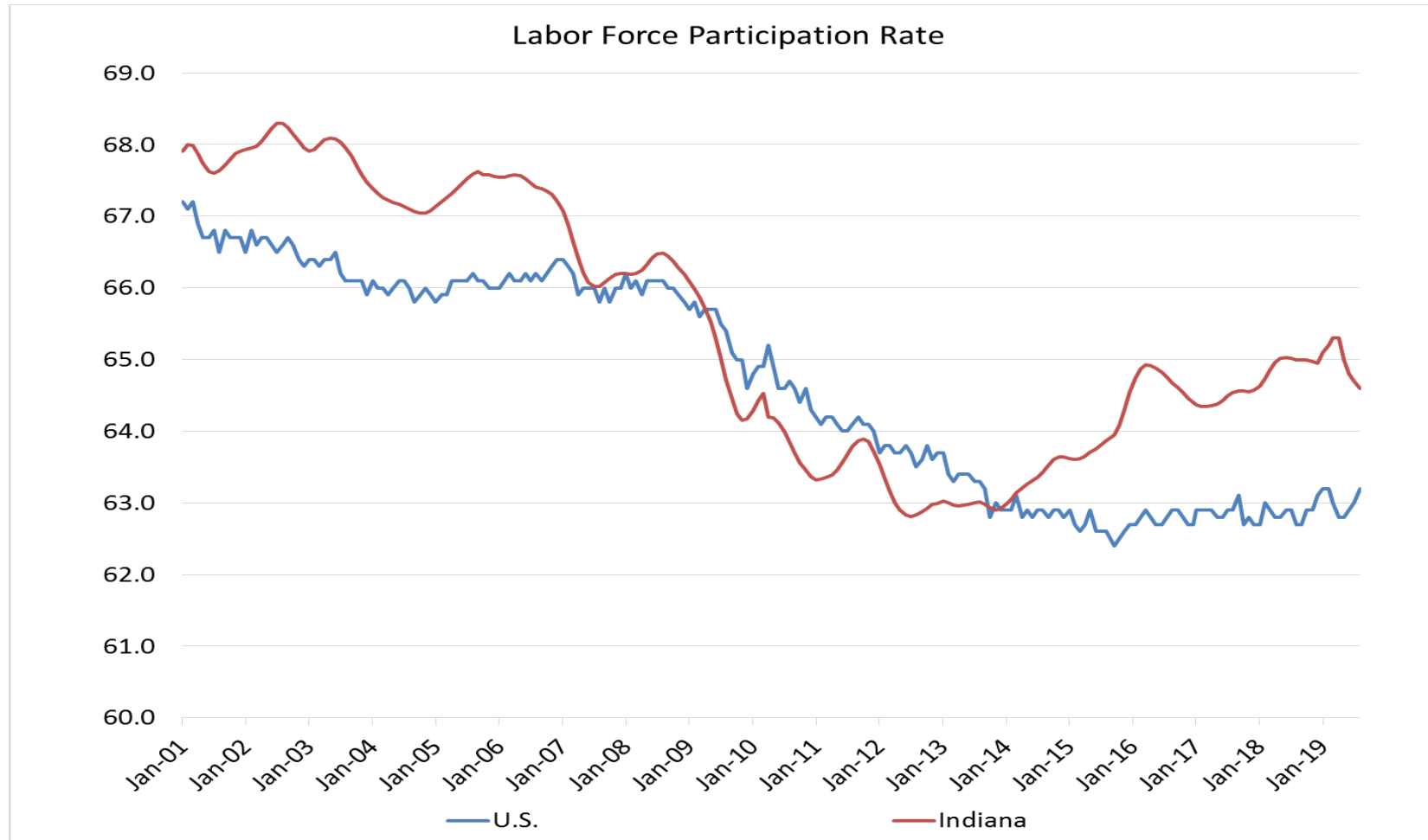
August 2019 Indiana Seasonally Adjusted Labor Force stands at 3,386,094.

- Employed labor force **increased** 2,125 over the month
- Unemployment **decreased** by 4,260 over the month



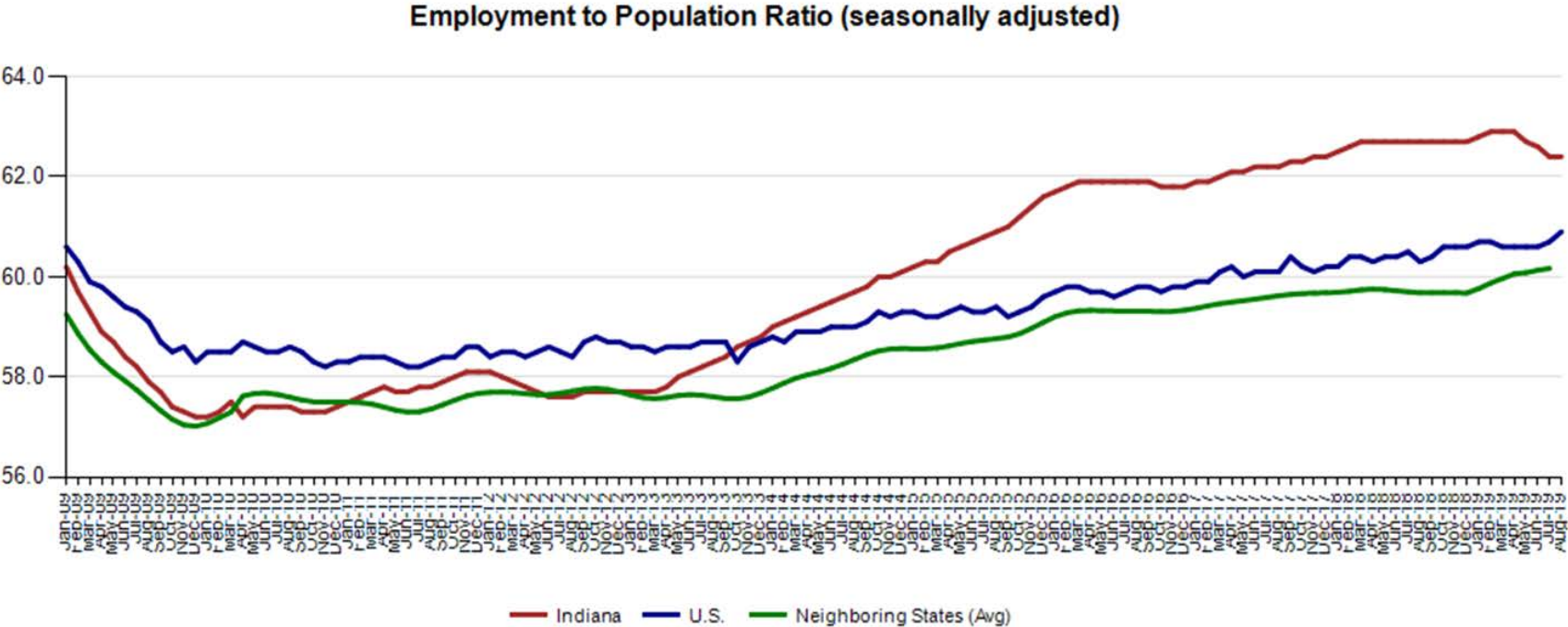
Indiana Labor Force Participation Rate Compared to U.S.

Indiana is at 64.6% compared to U.S. at 63.2%



Employment to Population Ratio (seasonally adjusted)

The Indiana Employment to Population Ratio for August 2019 is 62.4% compared to the U.S. at 60.9% and border states at 60.2% (July)



Alternative Measures of Labor Underutilization

3rd Quarter 2018 through 2nd Quarter 2019 Averages

State	U-1	U-2	U-3	U-4	U-5	U-6
Illinois	1.6	2.1	4.2	4.4	5.0	7.9
Indiana	1.0	1.9	3.6	3.8	4.4	6.7
Kentucky	1.4	1.7	4.3	4.7	5.6	8.2
Michigan	1.4	1.8	4.1	4.4	4.8	7.6
Minnesota	0.8	1.8	3.1	3.2	3.7	5.6
Ohio	1.2	1.9	4.1	4.3	5.0	7.9
Wisconsin	0.9	1.6	3.1	3.2	3.7	5.7
United States	1.4	1.8	3.8	4.0	4.7	7.4

The six state measures are based on the same definitions as those published for the U.S.:

- U-1, persons unemployed 15 weeks or longer, as a percent of the civilian labor force;
- U-2, job losers and persons who completed temporary jobs, as a percent of the civilian labor force;
- U-3, total unemployed, as a percent of the civilian labor force (this is the definition used for the official unemployment rate);
- U-4, total unemployed plus discouraged workers, as a percent of the civilian labor force plus discouraged workers;
- U-5, total unemployed, plus discouraged workers, plus all other marginally attached workers, as a percent of the civilian labor force plus all marginally attached workers; and
- U-6, total unemployed, plus all marginally attached workers, plus total employed part time for economic reasons, as a percent of the civilian labor force plus all marginally attached workers.



Midwest Comparison Rates: Seasonally Adjusted Over the Year and Over the Month

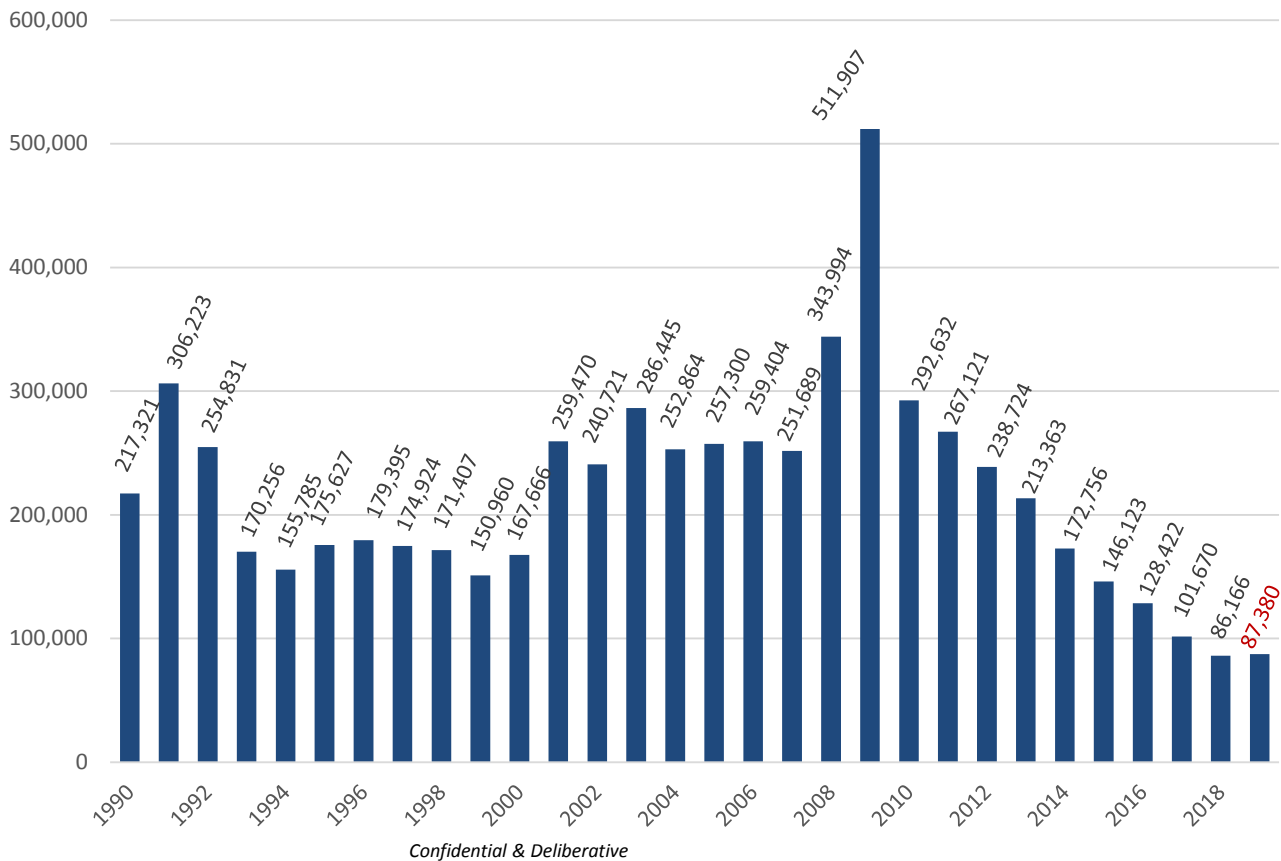
	Aug 2018	Jul-19	Aug 2019	Monthly change	Yearly change
Indiana	3.5%	3.4%	3.3%	-0.1%	-0.2%
U.S.	3.8%	3.7%	3.7%	0.0%	-0.1%
Illinois	4.2%	4.2%	4.0%	-0.2%	-0.2%
Kentucky	4.4%	4.3%	4.4%	0.1%	0.0%
Michigan	3.9%	4.3%	4.2%	-0.1%	0.3%
Minnesota	2.8%	3.4%	3.3%	-0.1%	0.5%
Ohio	4.6%	4.0%	4.1%	0.1%	-0.5%
Wisconsin	3.0%	3.0%	3.1%	0.1%	0.1%

***2018 Benchmark**
Confidential & Deliberative



Weekly Initial Claims – Week 36

Total aggregated UI claims for the first 36 weeks of each year as reported to ETA.



Regular UI Claims

*Reference Week (12th of the month) Input to LAUS Unemployment Rate Model
Declines over the month - and over the year*

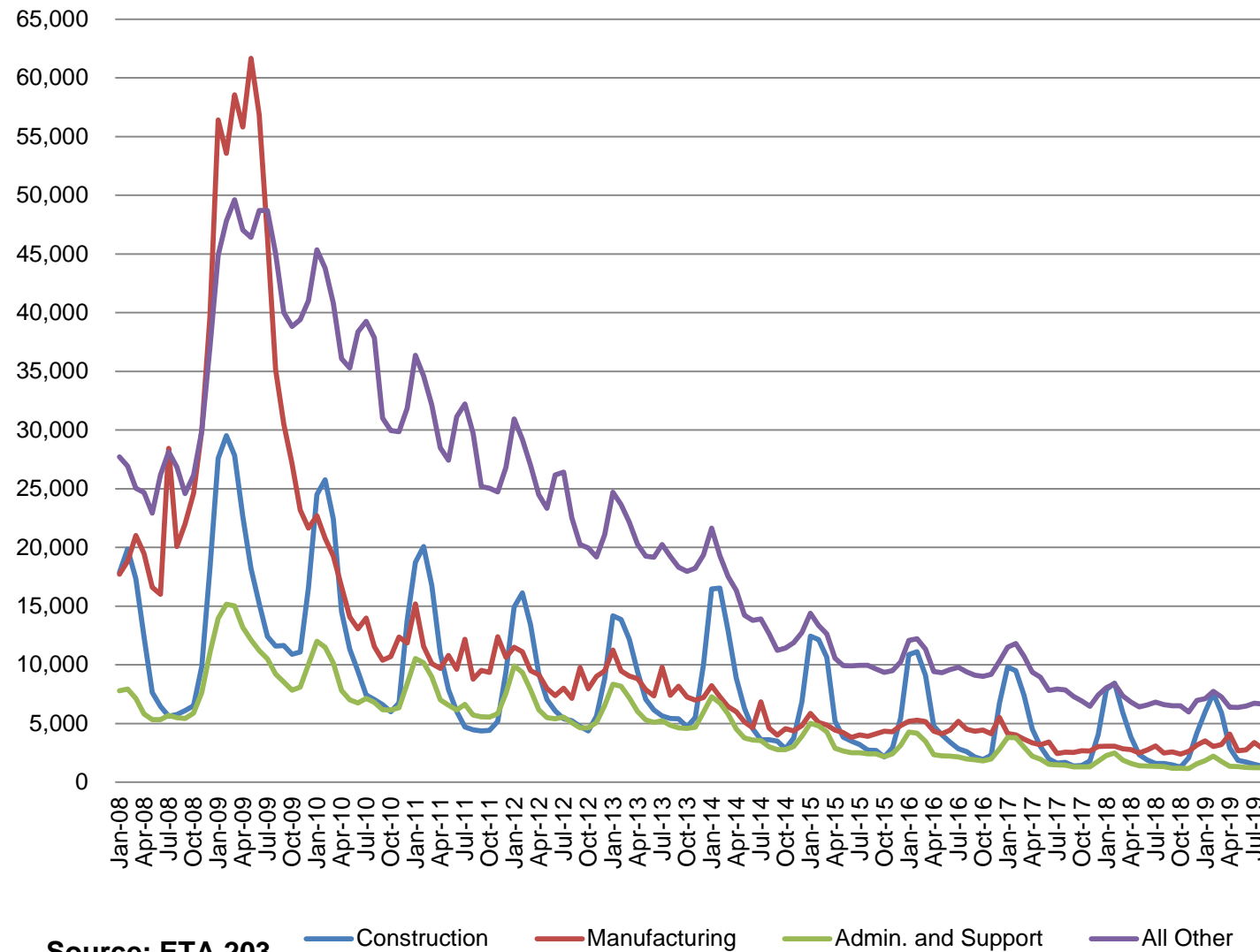
	2009	2013	2014	2015	2016	2017	2018	2019	OTM Change	OTY Change
JANUARY	150,888	63,223	49,377	41,333	36,555	33,137	24,968	21,808	5,115	(3,160)
FEBRUARY	154,388	60,183	52,316	39,282	36,909	32,463	25,879	23,992	2,184	(1,887)
MARCH	157,257	54,578	45,928	35,755	32,439	32,141	21,171	22,446	(1,546)	1,275
APRIL	143,842	48,548	39,717	25,597	23,895	21,998	17,618	17,914	(4,532)	296
MAY	141,174	42,997	32,460	22,807	22,300	19,431	14,774	14,411	(3,503)	(363)
JUNE	136,670	41,722	29,524	22,030	22,025	16,722	14,653	14,386	(25)	(267)
JULY	121,336	44,597	30,845	22,341	22,326	15,775	15,098	15,054	668	(44)
AUGUST	103,509	39,998	26,061	21,472	20,737	15,692	13,959	14,048	(1,006)	89
SEPTEMBER	92,680	39,563	23,685	20,941	19,372	14,334	12,981			
OCTOBER	86,275	37,778	23,768	19,917	19,143	14,266	13,083			
NOVEMBER	82,451	38,517	25,315	21,199	19,547	14,347	15,499			
DECEMBER	91,814	42,484	30,982	26,249	24,599	17,345	16,693			

**Without earnings – Reference week claims*



Regular UI Claims by Industry

For the Reference Week of Each



Source: ETA 203

Construction

Manufacturing

Admin. and Support

All Other

Indiana: Not in Labor Force by Age

September 2018 – August 2019
Current Population Survey, Bureau of Labor Statistics (in 1000s)

	Total	Age			Sex	
		16 to 24 years	25 to 54 years	55 years and over	Men	Women
	Indiana					
Total not in the labor force	1,846.3	290.6	434.6	1,121.2	733.0	1,113.4
Do not want a job now	1,736.7	256.5	396.0	1,084.3	679.8	1,056.9
Want a job	109.6	34.1	38.6	36.9	53.2	56.4
Did not search for work in previous year	72.7	21.3	22.4	29.0	33.7	39.0
Searched for work in previous year	36.9	12.8	16.2	7.9	19.5	17.4
Not available to work now	9.1	4.3	4.0	0.8	4.2	4.9
Available to work now	27.8	8.5	12.1	7.2	15.3	12.5
Reason not currently looking:						
Discouragement over job prospects	6.3	1.6	2.5	2.2	4.6	1.7
Reasons other than discouragement	21.5	6.9	9.7	4.9	10.7	10.8

Source: Table a. Employment status of the civilian non-institutional population by sex, age, race, and Hispanic origin, September 2018 - August 2019 (based on CPS)
(Numbers in thousands)

Indiana: Labor Force by Education

Table f. Employment status of the civilian non-institutional population 25 years and over by educational attainment
September 2018 - August 2019 (based on CPS) (Numbers in the thousands)

	Civilian noninstitutional population	Civilian Labor Force		Employment		Unemployment	
		Total	Rate	Total	Rate	Total	Rate
	Indiana						
Less than a High school diploma	422.2	229.8	54.4	229.8	54.4	0.0	0.0
High school graduates, no college ¹	1,579.2	925.8	58.6	906.0	57.4	19.8	2.1
Some college or associate degree	1,065.7	709.6	66.6	695.8	65.3	13.8	1.9
Bachelor's degree and higher ²	1,379.2	1,070.7	77.6	1,057.7	76.7	13.1	1.2

- Data not available

¹ Includes persons with a high school diploma or equivalent

² Includes person with bachelor's, master's, professional and doctoral degrees

Indiana: Labor Force by Gender and Age

	Civilian labor force participation rate	Unemployment rate
Both Sexes		
All Races		
Age 16+	64.7	3.6
Age 16-19	44.4	13.7
Age 20+	66.2	3.1
White		
Age 16+	64.9	3.1
Age 16-19	47.7	11.4
Age 20+	66.1	2.7
Black		
Age 16+	63.4	8.0
Age 16-19	34.5	32.2
Age 20+	66.0	6.9
Hispanic		
Age 16+	70.0	3.7
Age 16-19	47.1	13.0
Age 20+	72.3	3.1
Male, All Races		
Age 16+	71.1	3.6
Age 20+	72.9	3.0
Female, All Races		
Age 16+	58.7	3.7
Age 20+	60.0	3.2
Male, White		
Age 16+	71.6	2.9
Age 20+	72.9	2.6
Female, White		
Age 16+	58.6	3.2
Age 20+	59.6	2.8

September 2018 – August 2019
Current Population Survey, Bureau
of Labor Statistics (in 1000s)

Source: Table a. Employment status of the civilian non-institutional population by sex, age, race, and Hispanic origin, September 2018 - August 2019 (based on CPS) (Numbers in thousands)



Indiana: Labor Force by Gender and Age

September 2018 – August 2019
Current Population Survey, Bureau of Labor Statistics (in 1000s)

	Civilian labor force participation rate	Unemployment rate
Male, All Races		
Age 16-19	47.8	14.3
Age 20-24	81.7	5.6
Age 25-34	89.4	3.6
Age 35-44	91.3	2.5
Age 45-54	88.7	2.4
Age 55-64	70.7	2.4
Age 65+	24.4	2.9
Female, All Races		
Age 16-19	41.0	13.0
Age 20-24	75.4	4.4
Age 25-34	74.6	3.4
Age 35-44	75.2	3.2
Age 45-54	77.3	3.1
Age 55-64	62.5	2.0
Age 65+	16.2	4.2

Source: Table a. Employment status of the civilian non-institutional population by sex, age, race, and Hispanic origin, September 2018 - August 2019 (based on CPS) (Numbers in thousands)



Indiana: Duration of Unemployment Part 1

September 2018 – August 2019

Current Population Survey, Bureau of Labor Statistics (in 1000s)

	Total	5 to 14 weeks	15 weeks and over					Median duration (Average of monthly median duration)	Mean duration
			Total	15 to 26 weeks	27 weeks and over				
					Total	27 to 51 weeks	52 weeks and over		
Indiana									
Both Sexes									
All Races	118.6	41.1	28.6	12.6	15.9	8.8	7.1	7.1	14.5
White	88.8	29.4	20.8	9.5	11.3	5.1	6.3	6.8	14.7
Black	22.1	9.7	4.3	2.6	1.8	1.4	0.3	6.4	10.3
Hispanic	9.8	2.7	1.7	0.7	1.0	-	1.0	11.0	14.5
Age 16-19	22.5	8.0	3.3	2.4	0.9	0.7	0.2	5.9	8.3
Age 20+	96.1	33.1	25.3	10.3	15.0	8.1	6.9	7.4	16.0
Male, 16+	64.4	25.1	15.9	6.2	9.7	5.5	4.2	7.6	15.1
Female, 16+	54.2	16.0	12.7	6.5	6.2	3.3	2.9	5.7	13.8

- Data not available

Source: Table d. Unemployed persons by sex, age, race, Hispanic origin, and duration of unemployment, September 2018 - August 2019 (based on CPS) Numbers in thousands



Indiana: Duration of Unemployment Part 2

September 2018 – August 2019

Current Population Survey, Bureau of Labor Statistics (in 1000s)

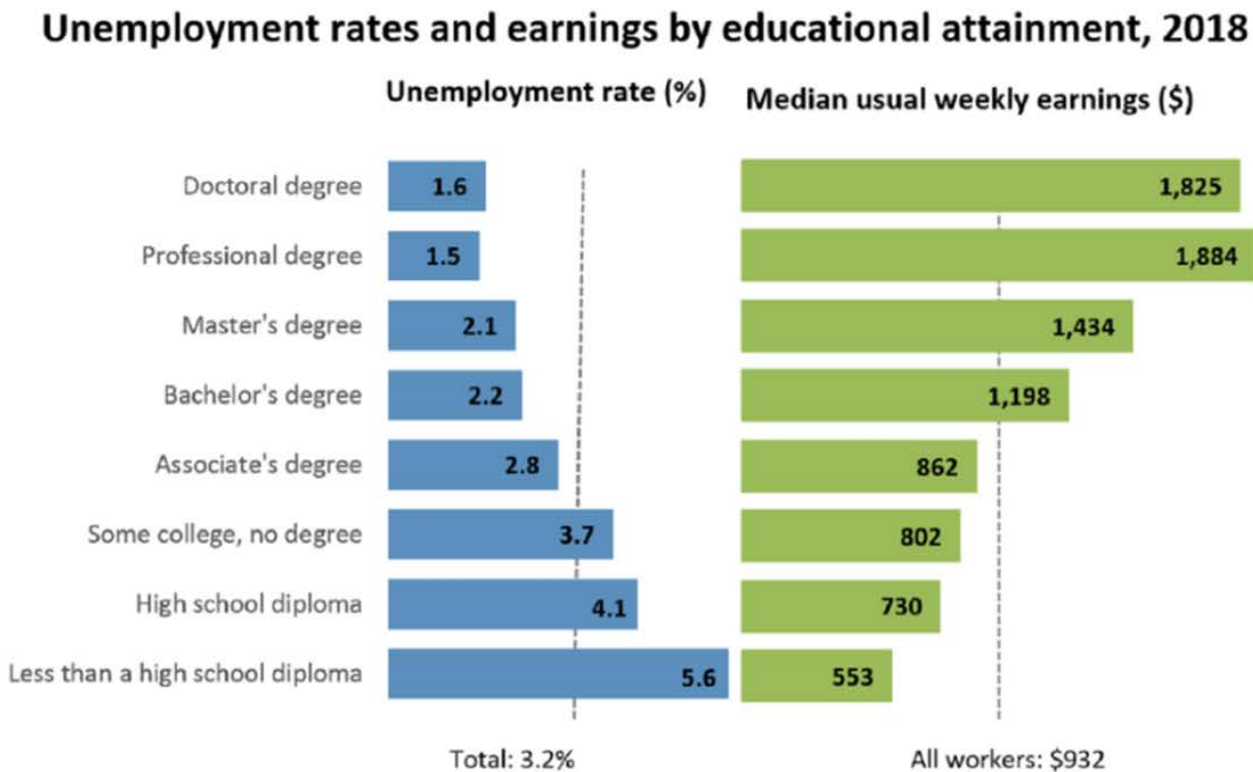
	Duration of unemployment							Aggregate weeks of unemployment
	Less than 5 weeks	5-6	7-10	11-14	15-26	27-51	52+	
Indiana								
Both Sexes								
All Races	48.9	9.4	18.2	13.5	12.6	8.8	7.1	1,725.0
White	38.6	7.6	13.1	8.6	9.5	5.1	6.3	1,301.5
Black	8.1	1.4	4.4	4.0	2.6	1.4	0.3	228.1
Hispanic	5.3	0.5	1.6	0.7	0.7	-	1.0	141.6
Age 16-19	11.2	1.5	3.8	2.6	2.4	0.7	0.2	187.2
Age 20+	37.7	7.8	14.4	10.9	10.3	8.1	6.9	1,537.8
Male, 16+	23.4	4.6	11.3	9.2	6.2	5.5	4.2	975.4
Female, 16+	25.5	4.8	6.9	4.4	6.5	3.3	2.9	749.6

- Data not available

Source: Table d. Unemployed persons by sex, age, race, Hispanic origin, and duration of unemployment, September 2018 - August 2019 (based on CPS) Numbers in thousands



Unemployment rates and earnings by educational attainment



Note: Data are for persons age 25 and over. Earnings are for full-time wage and salary workers.
Source: U.S. Bureau of Labor Statistics, Current Population Survey.



Source: Table d. Unemployed persons by sex, age, race, Hispanic origin, and duration of unemployment, September 2018 - August 2019 (based on CPS) Numbers in thousands