

05/15/2019

Indiana's Employment and Labor Force Estimates

April 2019

INDIANA
DEPARTMENT OF
WORKFORCE
DEVELOPMENT

Key Points: April 2019

Unemployment Rate

- Indiana = 3.6%
- U.S. = 3.6%

Indiana's rate has increased 0.2 percentage points over the year from April 2018.

Indiana's Labor Force

- Over the month, increased 1,349 due to an increase in employment of 1,320 and an increase in unemployment of 29.
- Over the year, increased by 37,495 and is at 3,415,523 which is a new Labor force peak.

Indiana's labor force participation rate remained the same over the month and continues to be 65.3%. This remains above the U.S. labor force participation rate of 62.8%.

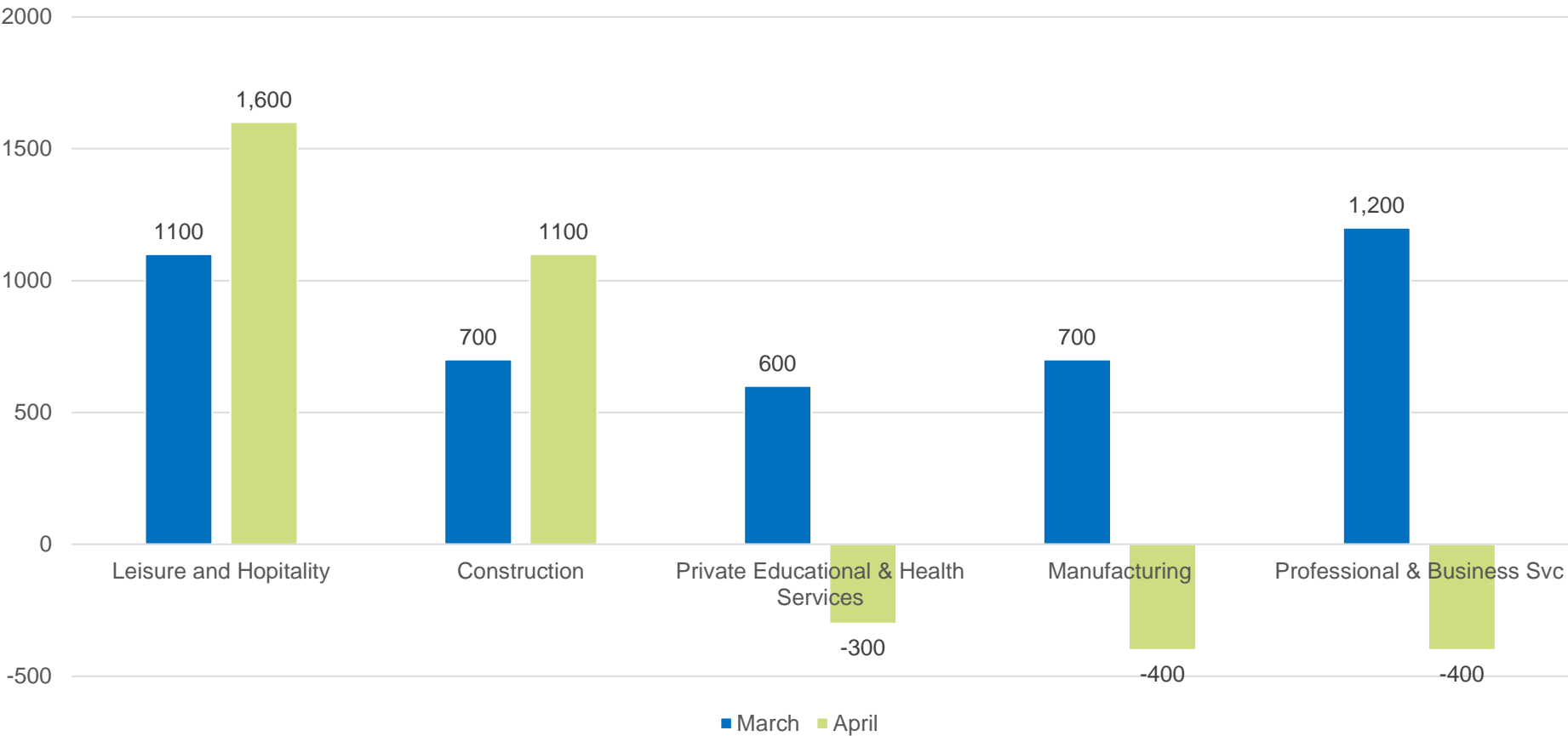
For historical labor force participation data, [visit this link](#).



Key Points: April 2019

Indiana's Private Employment

- Decreased by 3,600 over the month and had gains of 36,700 over the year.
- April private employment = 2,743,500



Revisions to March 2019 Estimates

Industry Title	Feb	Mar Prel	Mar Rev	Revision	Chg from Feb	Pre Chg from Feb
Total Nonfarm	3173.8	3180.8	3176.8	-4.0	3.0	7.0
Total Private	2745.1	2750.4	2747.1	-3.3	2.0	5.3
Goods Producing	697.3	698.4	698.3	-0.1	1.0	1.1
Service-Providing	2476.5	2482.4	2478.5	-3.9	2.0	5.9
Private Service Providing	2047.8	2052.0	2048.8	-3.2	1.0	4.2
Construction	147.6	148.3	148.4	0.1	0.8	0.7
Manufacturing	543.6	543.9	543.6	-0.3	0.0	0.3
Trade, Transportation, and Utilities	601.0	601.7	599.5	-2.2	-1.5	0.7
Wholesale Trade	120.9	121.2	121.1	-0.1	0.2	0.3
Retail Trade	320.0	320.7	318.9	-1.8	-1.1	0.7
Transportation, Warehousing, and Utilities	160.1	159.8	159.5	-0.3	-0.6	-0.3
Information	28.6	28.5	28.6	0.1	0.0	-0.1
Financial Activities	137.4	138.4	138.1	-0.3	0.7	1.0
Finance and Insurance	103.0	103.5	103.2	-0.3	0.2	0.5
Real Estate and Rental and Leasing	34.4	34.9	34.9	0.0	0.5	0.5
Professional and Business Services	349.7	350.9	350.6	-0.3	0.9	1.2
Professional, Scientific, and Technical Services	124.8	124.9	125.1	0.2	0.3	0.1
Management of Companies and Enterprises	34.5	34.6	34.4	-0.2	-0.1	0.1
Admin & Support & Waste Mgmt & Remediation Services	190.4	191.4	191.1	-0.3	0.7	1.0
Education and Health Services	487.8	488.4	487.8	-0.6	0.0	0.6
Educational Services	67.9	68.2	67.7	-0.5	-0.2	0.3
Health Care and Social Assistance	419.9	420.2	420.1	-0.1	0.2	0.3
Leisure and Hospitality	310.3	311.4	311.6	0.2	1.3	1.1
Other Services	133.0	132.7	132.6	-0.1	-0.4	-0.3
Government	428.7	430.4	429.7	-0.7	1.0	1.7



Comparing Local Area Unemployment Statistics (LAUS) and Current Employment Statistics (CES)

LAUS (Labor Force by Residence)

This counts people, not jobs, and is...

- An estimate of employment based on where the employee lives, rather than where they work
- Used in calculating the labor force

CES (Employment by Job)

This counts jobs, not people, and is...

- An estimate of employment based on the location of the job regardless of the worker's residence
- Also called nonag wage and salary or nonfarm employment
- Used in Quarterly Census of Employment and Wages (QCEW), Occupational Employment Statistics (OES) and CES data

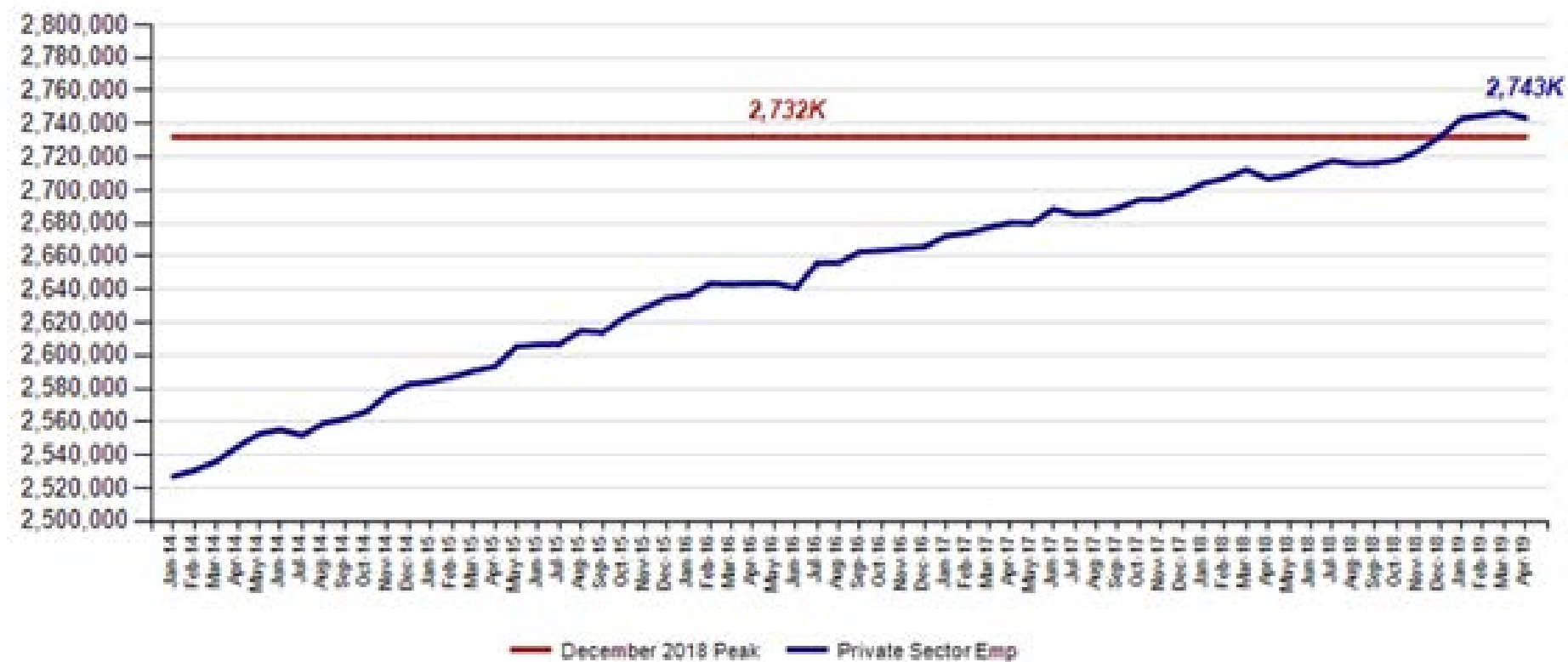
CES Monthly Jobs Report

INDIANA
DEPARTMENT OF
WORKFORCE
DEVELOPMENT

MONTHLY
BRIEFING

Indiana Private Sector Employment

April total private employment is 11,400 above the December 2018 peak.



Indiana Private Sector Employment Change

April 2019 decreased by 3,600 jobs over the month and is up 36,700 over the year.

Industry	April 2018	December 2018	March 2019	April 2019	Month Change	Y-to-D Change	Y-to-Y Change
Private Educational & Health Services	472.0	484.4	487.8	487.5	-0.3	3.1	15.5
.....Private Educational Services	63.0	66.4	67.7	68.2	0.5	1.8	5.2
.....Health Care & Social Assistance	409.0	418.0	420.1	419.3	-0.8	1.3	10.3
Manufacturing	540.9	544.3	543.6	543.2	-0.4	-1.1	2.3
Professional & Business Services	343.1	344.2	350.6	350.2	-0.4	6.0	7.1
Financial Activities	138.9	138.4	138.1	137.5	-0.6	-0.9	-1.4
Construction	139.8	147.0	148.4	149.5	1.1	2.5	9.7
Leisure and Hospitality	308.9	308.9	311.6	313.2	1.6	4.3	4.3
Trade, Transportation & Utilities	595.5	597.5	599.5	595.9	-3.6	-1.6	0.4
.....Trade	440.8	440.2	440.0	438.3	-1.7	-1.9	-2.5
.....Transportation, Warehousing & Utilities	154.7	157.3	159.5	157.6	-1.9	0.3	2.9
All Other	167.7	167.4	167.5	166.5	-1.0	-0.9	-1.2
Total Private	2,706.8	2,732.1	2,747.1	2,743.5	-3.6	11.4	36.7
Government (Includes Public Schools & Hospitals)	427.8	429.0	429.7	429.8	0.1	0.8	2.0
Total Nonfarm	3,134.6	3,161.1	3,176.8	3,173.3	-3.5	12.2	38.7
United States Total Private	126,054.0	127,790.0	128,312.0	128,548.0	236.0	758.0	2,494.0

Source: Current Employment Statistics (seasonally adjusted)

- Construction **gained** 1,100 jobs over the month and Leisure and Hospitality **gained** 1,600.
- The Trade, Transportation, & Utilities category **lost** 3,600 jobs over the month.

For month to month change, [visit this link.](#)

Indiana Private Sector Employment Change From Peak and Trough

April 2019 estimates show Indiana has gained 419,300 jobs since July 2009.

Supersector	Private Empl. Peak Dec 2018	Private Empl. Trough July 2009	March 2019	April 2019	Month to Month Change	Change Since Peak	Change Since Trough	% Month to Month Change
Private Educational & Health Services	484.4	411.1	487.8	487.5	-0.3	3.1	76.4	-0.1%
.....Private Educational Services	66.4	63.3	67.7	68.2	0.5	1.8	4.9	0.7%
.....Health Care & Social Assistance	418.0	347.8	420.1	419.3	-0.8	1.3	71.5	-0.2%
Manufacturing	544.3	426.7	543.6	543.2	-0.4	-1.1	116.5	-0.1%
Professional & Business Services	344.2	256.9	350.6	350.2	-0.4	6.0	93.3	-0.1%
Financial Activities	138.4	130.7	138.1	137.5	-0.6	-0.9	6.8	-0.4%
Construction	147.0	117.4	148.4	149.5	1.1	2.5	32.1	0.7%
Leisure and Hospitality	308.9	276.8	311.6	313.2	1.6	4.3	36.4	0.5%
Trade, Transportation & Utilities	597.5	546.0	599.5	595.9	-3.6	-1.6	49.9	-0.6%
.....Trade	440.2	421.5	440.0	438.3	-1.7	-1.9	16.8	-0.4%
.....Transportation, Warehousing & Utilities	157.3	124.5	159.5	157.6	-1.9	0.3	33.1	-1.2%
All Other	167.4	158.6	167.5	166.5	-1.0	-0.9	7.9	-0.6%
Total Private	2,732.1	2,324.2	2,747.1	2,743.5	-3.6	11.4	419.3	-0.1%
Government (Includes Public Schools & Hospitals)	429.0	434.5	429.7	429.8	0.1	0.8	-4.7	0.0%
Total Nonfarm	3,161.1	2,758.7	3,176.8	3,173.3	-3.5	12.2	414.6	-0.1%
United States Total Private	127,790.0	108,164.0	128,312.0	128,548.0	236.0	758.0	20,384.0	0.2%

Source: Current Employment Statistics (seasonally adjusted)

- Manufacturing has accounted for 116,500 of this **increase** of jobs.
- Professional & Business Services **increased** by 93,300 jobs over this time frame.

For historical data, [visit this link.](#)

Indiana Private Sector Employment Change Compared to U.S.

April 2019 Indiana private sector declined by 0.1% and the U.S. grew by 0.2%.

Industry	Indiana Month to Month	U.S. Month to Month	Indiana vs U.S. Change
Private Educational & Health Services	-0.1%	0.3%	UNDER
.....Private Educational Services	0.7%	0.3%	OVER
.....Health Care & Social Assistance	-0.2%	0.3%	UNDER
Manufacturing	-0.1%	0.0%	UNDER
Professional & Business Services	-0.1%	0.4%	UNDER
Financial Activities	-0.4%	0.1%	UNDER
Construction	0.7%	0.4%	OVER
Leisure and Hospitality	0.5%	0.2%	OVER
Trade, Transportation & Utilities	-0.6%	0.0%	UNDER
.....Trade	-0.4%	0.0%	UNDER
.....Transportation, Warehousing & Utils	-1.2%	0.1%	UNDER
All Other	-0.6%	0.1%	UNDER
Total Private	-0.1%	0.2%	UNDER
Government (Includes Public Schools & Hospitals)	0.0%	0.1%	UNDER
Total Nonfarm	-0.1%	0.2%	UNDER

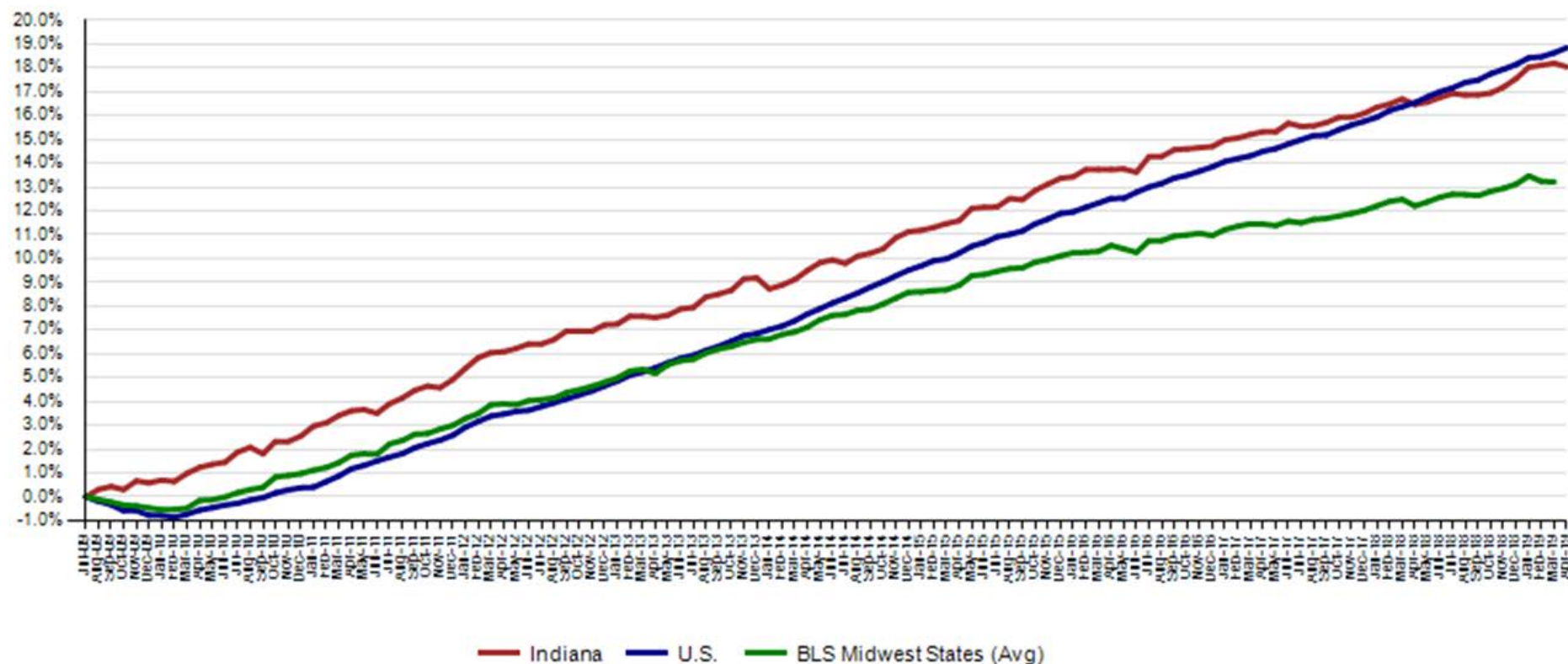
Indiana Year-to-Date	U.S. Year-to-Date	Indiana vs U.S. Change
0.6%	0.9%	UNDER
2.7%	0.6%	OVER
0.3%	1.0%	UNDER
-0.2%	0.2%	UNDER
1.7%	0.7%	OVER
-0.7%	0.4%	UNDER
1.7%	1.2%	OVER
1.4%	1.0%	OVER
-0.3%	0.1%	UNDER
-0.4%	0.0%	UNDER
0.2%	0.6%	UNDER
-0.5%	0.4%	UNDER
0.4%	0.6%	UNDER
0.2%	0.3%	UNDER
0.4%	0.5%	UNDER

Indiana Year-to-Year	U.S. Year-to-Year	Indiana vs U.S. Change
3.3%	2.5%	OVER
8.3%	1.7%	OVER
2.5%	2.6%	UNDER
0.4%	1.6%	UNDER
2.1%	2.6%	UNDER
-1.0%	1.3%	UNDER
6.9%	3.5%	OVER
1.4%	2.8%	UNDER
0.1%	0.8%	UNDER
-0.6%	0.3%	UNDER
1.9%	2.9%	UNDER
-0.7%	1.2%	UNDER
1.4%	2.0%	UNDER
0.5%	0.6%	UNDER
1.2%	1.8%	UNDER

Source: Current Employment Statistics (seasonally adjusted)

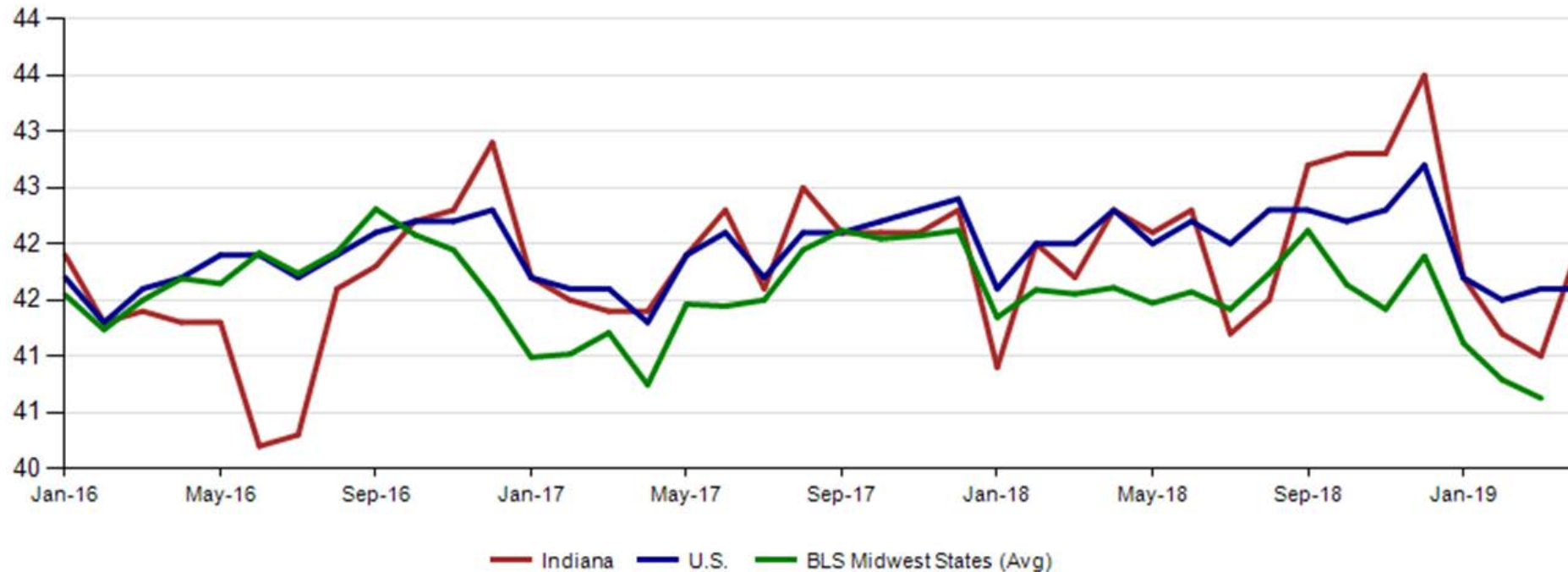
Indiana Private Sector Employment Growth Since July 2009

Indiana is trailing the U.S. in private job growth since July 2009. The U.S. has grown by 18.8% while Indiana has grown by 18.0%.



Avg. Weekly Manufacturing Production Hours

April 2019 average weekly hours for Indiana manufacturing production hours increased 1.0 to 42.0 hours. National manufacturing remained the same at 41.6 weekly hours, and Midwest states decreased 0.2 to 40.6 hours per week (March 2019 data).



LAUS Monthly Labor Force Report

INDIANA
DEPARTMENT OF
WORKFORCE
DEVELOPMENT

MONTHLY
BRIEFING

Current Employment Statistics (CES) and Local Area Unemployment Statistics (LAUS)

Point-in-Time Comparison

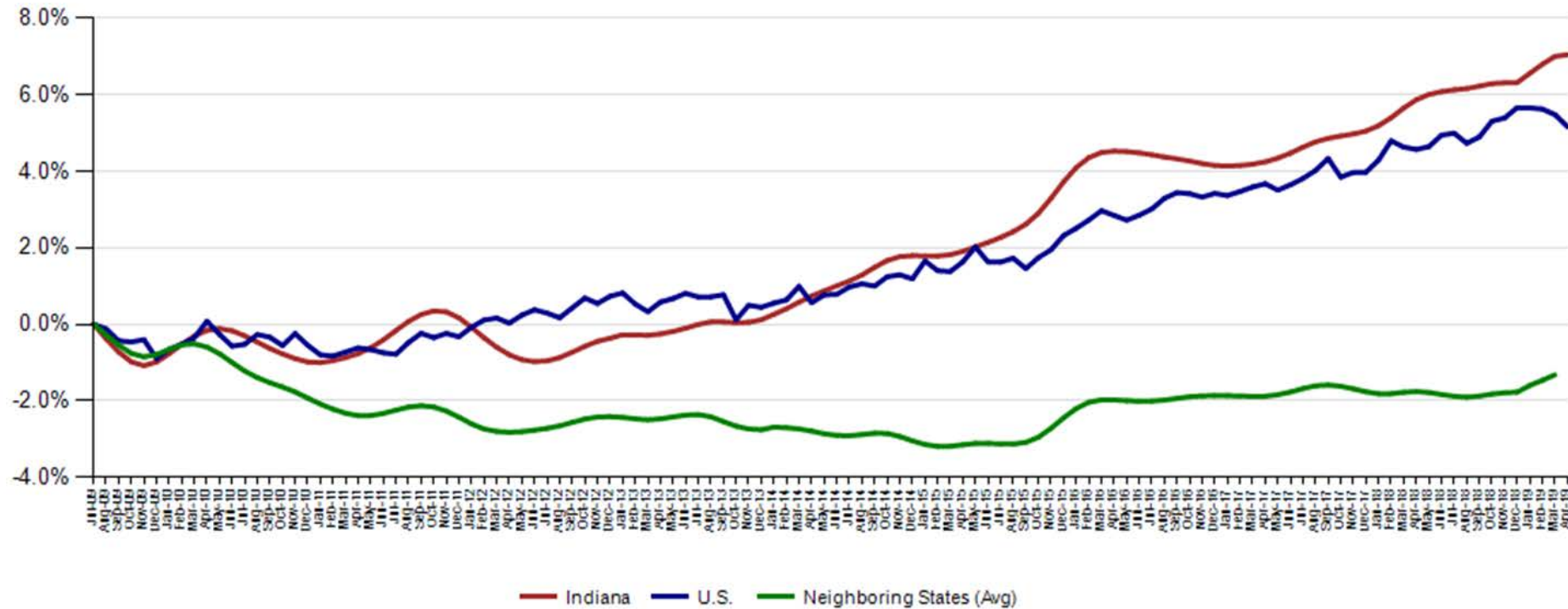
	December 2018 (Peak)	July 2009 (Trough)	March 2019	April 2019	Change Peak	Change Trough	Change Prev. Month
CES Employed	3,161.1	2,758.7	3,176.8	3,173.3	12.2	414.6	-3.5
LAUS Employed	3,274.9	2,854.2	3,290.9	3,292.2	17.3	438.0	1.3
LAUS Unemployed	117.4	336.8	123.3	123.3	6.0	-213.5	0.0
Labor Force	3,392.3	3,191.0	3,414.2	3,415.5	23.2	224.6	1.3
Unemployment Rate	3.5	10.6	3.6	3.6	0.1	-7.0	0.0



Indiana Labor Force Since July '09 Indiana Trough

April 2019 Indiana Seasonally Adjusted Labor Force stands at 3,415,523

- Employed labor force **increased** by 1,320 over the month
- Unemployment **increased** by 29 over the month



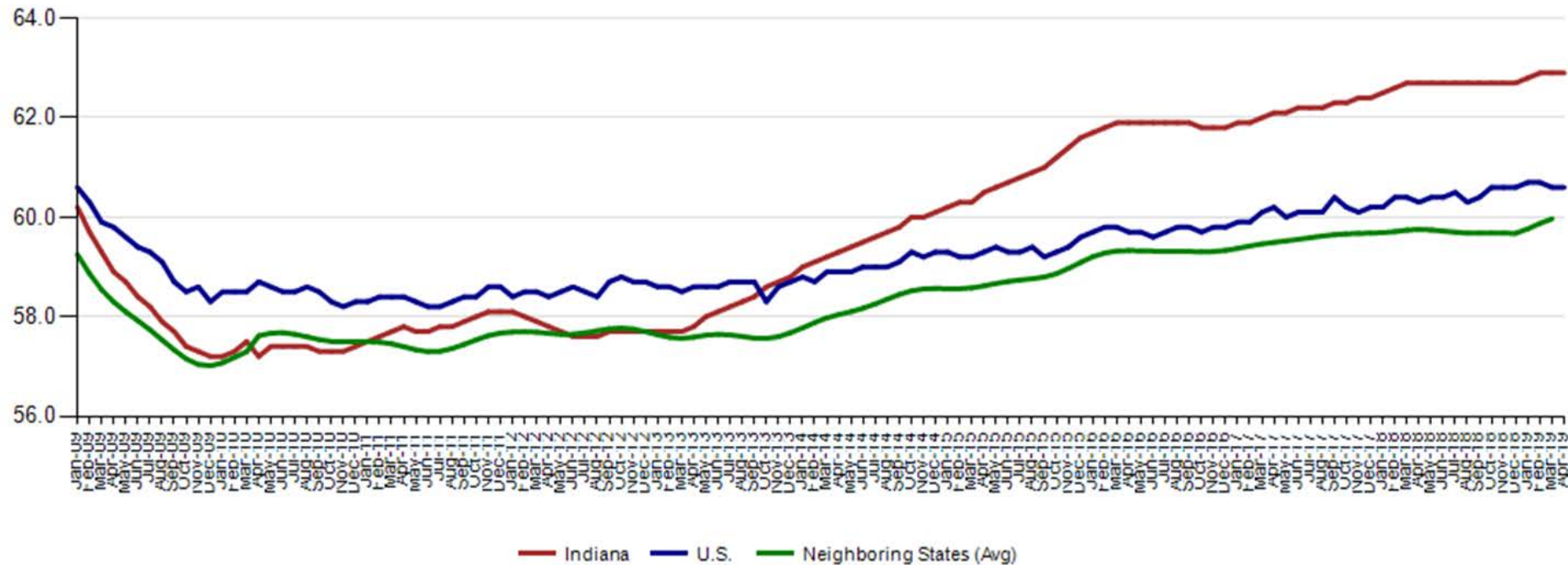
Indiana Labor Force Participation Rate Compared to U.S.

Indiana is at 65.3% compared to U.S. at 62.8%



Employment to Population Ratio (seasonally adjusted)

The Indiana Employment to Population Ratio for April 2019 is 62.9% compared to the U.S. at 60.6%



Alternative Measures of Labor Underutilization

2nd Quarter 2018 through 1st Quarter 2019 Averages

State	U-1	U-2	U-3	U-4	U-5	U-6
Illinois	1.6	2.1	4.3	4.4	5.1	8.1
Indiana	1.1	1.8	3.7	3.9	4.4	6.6
Kentucky	1.4	1.6	4.4	4.7	5.6	8.3
Michigan	1.2	1.8	4	4.3	4.8	7.6
Minnesota	0.8	1.6	3	3.1	3.5	5.5
Ohio	1.4	2.1	4.4	4.7	5.4	8.2
Wisconsin	0.9	1.7	2.9	3	3.5	5.7
United States	1.4	1.8	3.8	4.1	4.7	7.6

The six state measures are based on the same definitions as those published for the U.S.:

- U-1, persons unemployed 15 weeks or longer, as a percent of the civilian labor force;
- U-2, job losers and persons who completed temporary jobs, as a percent of the civilian labor force;
- U-3, total unemployed, as a percent of the civilian labor force (this is the definition used for the official unemployment rate);
- U-4, total unemployed plus discouraged workers, as a percent of the civilian labor force plus discouraged workers;
- U-5, total unemployed, plus discouraged workers, plus all other marginally attached workers, as a percent of the civilian labor force plus all marginally attached workers; and
- U-6, total unemployed, plus all marginally attached workers, plus total employed part time for economic reasons, as a percent of the civilian labor force plus all marginally attached workers.



Midwest Comparison Rates: Seasonally Adjusted Over the Year and Over the Month

	April 2018	March 2019	April 2019	Monthly change	Yearly change
Indiana	3.4%	3.6%	3.6%	0.0%	0.2%
U.S.	3.9%	3.8%	3.6%	-0.2%	-0.3%
Illinois	4.3%	4.4%	4.4%	0.0%	0.1%
Kentucky	4.4%	4.0%	4.0%	0.0%	-0.4%
Michigan	4.3%	4.0%	4.1%	0.1%	-0.2%
Minnesota	3.0%	3.2%	3.3%	0.1%	0.3%
Ohio	4.6%	4.4%	4.3%	-0.1%	-0.3%
Wisconsin	3.0%	2.9%	2.8%	-0.1%	-0.2%

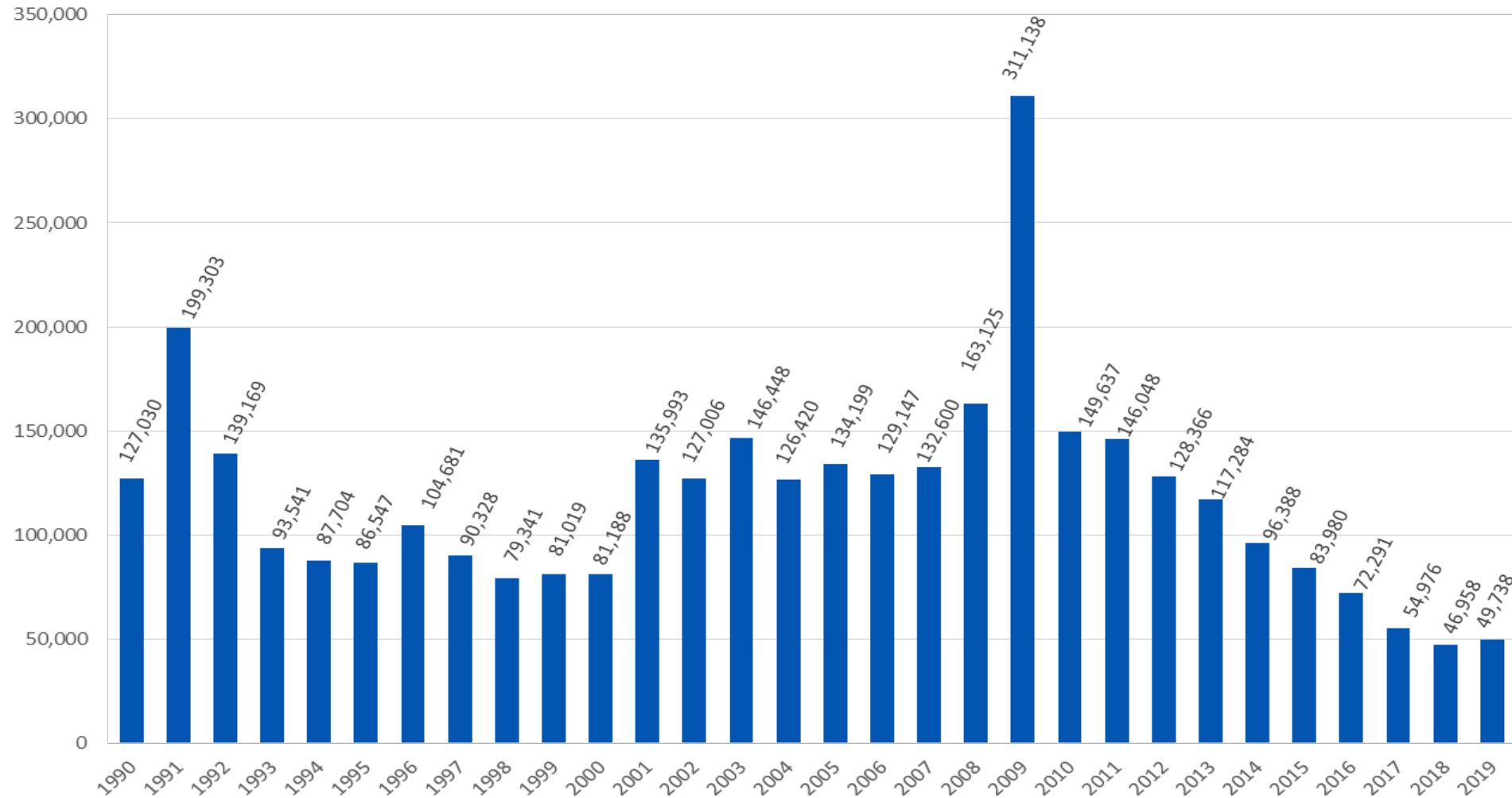
***2018 Benchmark**

Confidential & Deliberative



Weekly Initial Claims – Week 14

Total aggregated UI claims for the first 14 weeks of each year as reported to ETA.



Regular UI Claims

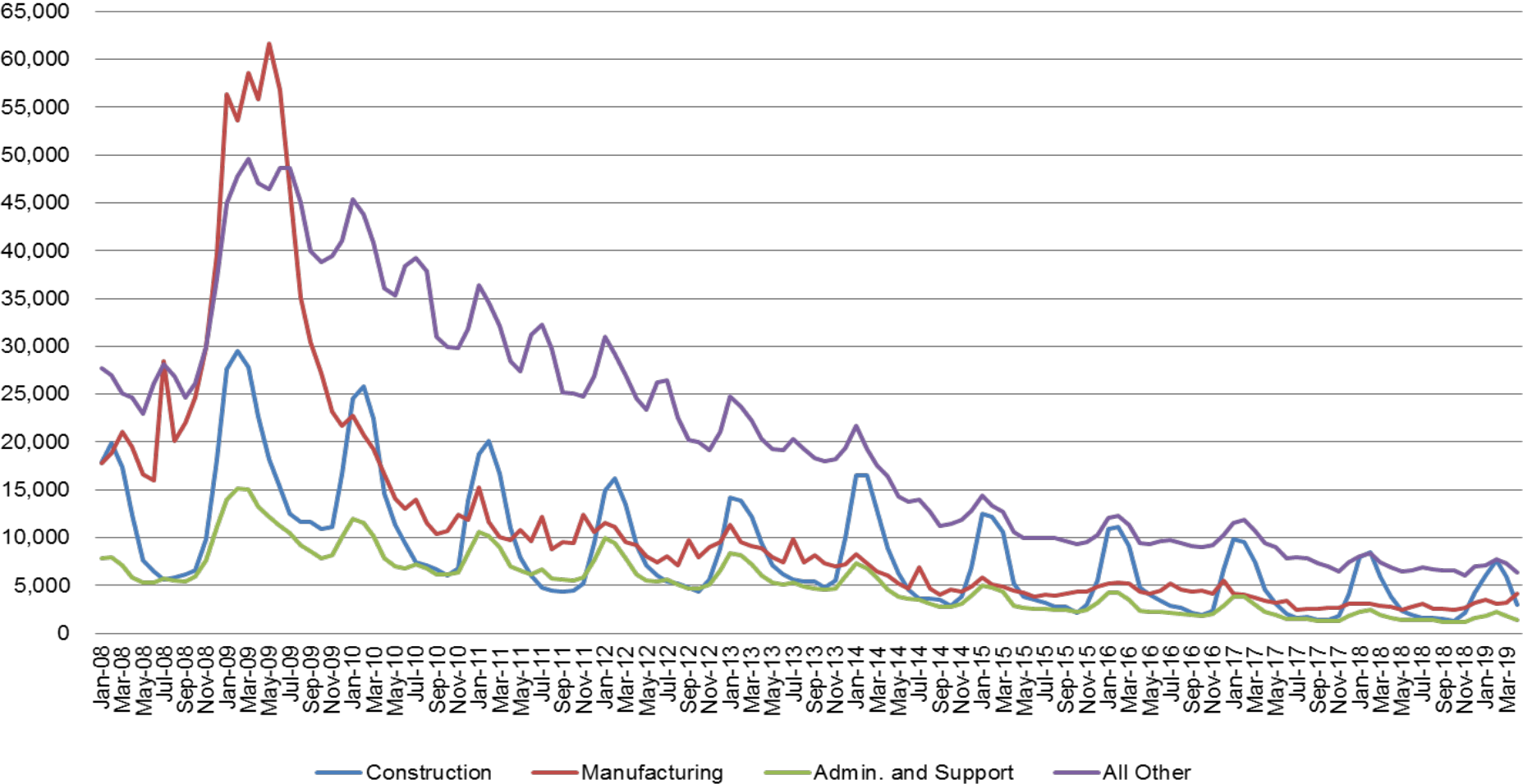
*Reference Week (12th of the month) Input to LAUS Unemployment Rate Model
Declines over the month - and over the year*

	2009	2013	2014	2015	2016	2017	2018	2019	OTM Change	OTY Change
JANUARY	150,888	63,223	49,377	41,333	36,555	33,137	24,968	21,808	5,115	-3,160
FEBRUARY	154,388	60,183	52,316	39,282	36,909	32,463	25,879	23,992	2,184	-1,887
MARCH	157,257	54,578	45,928	35,755	32,439	32,141	21,171	22,446	-1,546	1,275
APRIL	143,842	48,548	39,717	25,597	23,895	21,998	17,618	17,807	-4,639	189
MAY	141,174	42,997	32,460	22,807	22,300	19,431	14,774			
JUNE	136,670	41,722	29,524	22,030	22,025	16,722	14,653			
JULY	121,336	44,597	30,845	22,341	22,326	15,775	15,098			
AUGUST	103,509	39,998	26,061	21,472	20,737	15,692	13,959			
SEPTEMBER	92,680	39,563	23,685	20,941	19,372	14,334	12,981			
OCTOBER	86,275	37,778	23,768	19,917	19,143	14,266	13,083			
NOVEMBER	82,451	38,517	25,315	21,199	19,547	14,347	15,499			
DECEMBER	91,814	42,484	30,982	26,249	24,599	17,345	16,693			



Regular UI Claims by Industry

Reference week of each month



Indiana: Not in Labor Force by Gender and Age

May 2018 – April 2019

Current Population Survey, Bureau of Labor Statistics (in 1000s)

	Total	Age			Sex	
		16 to 24 years	25 to 54 years	55 years and over	Men	Women
Indiana						
Total not in the labor force	1,804.9	289.9	415.6	1,099.4	709.9	1,095.0
Do not want a job now	1,696.7	252.7	377.6	1,066.4	661.6	1,035.1
Want a job	108.2	37.2	38.0	33.0	48.3	59.9
Did not search for work in previous year	73.8	23.6	23.3	26.9	31.1	42.7
Searched for work in previous year	34.4	13.6	14.7	6.1	17.2	17.2
Not available to work now	8.3	3.1	3.9	1.3	3.7	4.6
Available to work now	26.1	10.5	10.8	4.8	13.4	12.7
Reason not currently looking:						
Discouragement over job prospects	4.9	2.6	1.5	0.8	2.9	2.1
Reasons other than discouragement	21.2	7.9	9.3	4.0	10.6	10.6



Indiana: Labor Force by Gender and Age

May 2018 – April 2019

Current Population Survey, Bureau of Labor Statistics (in 1000s)

	Civilian labor force participation	Unemployment Rate
Male, All Races		
Age 16-19	45.3	16.8
Age 20-24	82.8	5.0
Age 25-34	90.5	3.5
Age 35-44	92.3	2.3
Age 45-54	89.1	2.9
Age 55-64	73.2	2.0
Age 65+	25.4	3.4
Female, All Races		
Age 16-19	41.3	11.8
Age 20-24	78.4	5.8
Age 25-34	75.7	3.7
Age 35-44	76.7	3.3
Age 45-54	76.8	3.2
Age 55-64	63.2	1.7
Age 65+	14.9	3.8

Source: Table a. Employment status of the civilian non-institutional population by sex, age, race, and Hispanic origin, May 2018 - April 2019 (based on CPS) (Numbers in thousands)



Indiana: Labor Force by Gender and Age

	Civilian labor force participation rate	Unemployment Rate
Both Sexes		
All Races		
Age 16+	65.4	3.7
Age 16-19	43.4	14.5
Age 20+	67.1	3.2
White		
Age 16+	65.6	3.1
Age 16-19	45.1	12.4
Age 20+	67.0	2.7
Black		
Age 16+	64.8	8.3
Age 16-19	38.0	31.0
Age 20+	67.4	7.1
Hispanic		
Age 16+	72.2	3.0
Age 16-19	51.9	11.3
Age 20+	74.1	2.4
Male, All Races		
Age 16+	72.0	3.6
Age 20+	74.2	3.0
Female, All Races		
Age 16+	59.2	3.8
Age 20+	60.4	3.4
Male, White		
Age 16+	72.4	3.1
Age 20+	74.2	2.5
Female, White		
Age 16+	59.0	3.1
Age 20+	60.2	2.8

*May 2018 – April 2019
Current Population Survey, Bureau
of Labor Statistics (in 1000s)*

Source: Table a. Employment status of the civilian non-institutional population by sex, age, race, and Hispanic origin, May 2018 - April 2019 (based on CPS) (Numbers in thousands)

