



INDIANA  
**WORKFORCE**  
DEVELOPMENT  
AND ITS **WorkOne** CENTERS

# Indiana's Employment and Labor Force Estimates April 2015

*05/21/2015*



# Key Points

- Indiana's **April seasonally adjusted unemployment rate declined by 0.4 to 5.4%**. Indiana's rate is down (-0.6%) from April 2014. The national rate was 5.4% in April. *(LAUS, a survey of approximately 1,000 Indiana households).*
- The decline in the unemployment rate was driven by unemployment estimates declines of 12,585 and employment increases of 2,034. Overall, Indiana's **Labor Force declined by 10,551** in April. Indiana's Labor Force Participation rate declined by 0.3 to 63.3% although this remains above the US Labor Force Participation rate which was 62.8% in April. *(LAUS)*
- Indiana's Labor Force is up by 23,035 over the year, and is up by 62,866 since January 2013. Indiana's Labor Force stands at 3,245,167. Indiana's unemployment is down by 89,449 since January 2013, this is a decline of (34%). *(LAUS)*
- Indiana's **private sector gained 10,600 jobs in April, (0.4%)**. US Private employment grew by 213,000 over the month, a rate of (0.2%). *(CES)*
- **Indiana Private sector employment is up 57,300 from a year ago**, April 2014. This is annual growth of (2.2%). *(CES, a survey of approximately 5,000 Indiana employers)*
- Since January 2013 Indiana private employment has grown by 111,900 (4.5%). **Private sector monthly job growth has averaged about 4,000** over the last two years with 22 of 28 months showing positive job growth. *(CES)*



## IN Employment Change Over the Month, Year-to-Date and Over the Year (seasonally adjusted)

Industry	April 2014	December 2014	March 2015	April 2015	Month Change	Y-to-D Change	Y-to-Y Change
Private Educational & Health Services	437.6	441.5	445.4	446.1	0.7	4.6	8.5
..... <i>Private Educational Services</i>	64.7	65.5	65.1	66.4	1.3	0.9	1.7
..... <i>Health Care &amp; Social Assistance</i>	372.9	376.0	380.3	379.7	-0.6	3.7	6.8
Manufacturing	504.3	514.6	518.3	518.0	-0.3	3.4	13.7
Professional & Business Services	320.4	328.2	320.9	323.4	2.5	-4.8	3.0
Financial Activities	127.6	130.9	130.5	129.3	-1.2	-1.6	1.7
Construction	122.5	122.9	120.1	122.5	2.4	-0.4	0.0
Leisure and Hospitality	292.8	295.0	297.7	298.9	1.2	3.9	6.1
Trade, Transportation & Utilities	574.0	581.5	589.8	596.2	6.4	14.7	22.2
..... <i>Trade</i>	436.5	440.1	444.5	448.5	4.0	8.4	12.0
..... <i>Transportation, Warehousing &amp; Utilities</i>	137.5	141.4	145.3	147.7	2.4	6.3	10.2
All Other	168.3	168.3	171.5	170.4	-1.1	2.1	2.1
Total Private	2,547.5	2,582.9	2,594.2	2,604.8	10.6	21.9	57.3
Government (Includes Public Schools & Hospitals)	427.2	429.2	428.3	429.3	1.0	0.1	2.1
Total Nonfarm	2,974.7	3,012.1	3,022.5	3,034.1	11.6	22.0	59.4
United States Total Private	116,542.0	118,690.0	119,247.0	119,460.0	213.0	770.0	2,918.0

Source: Current Employment Statistics, seasonally adjusted



### IN Statewide Estimates (seasonally adjusted) -- April 2015

Supersector	Private Empl. Peak March 2000	Private Empl. Trough July 2009	March 2015	April 2015	Change Since Peak	Change Since Trough	Month to Month Change
Private Educational & Health Services	330.1	411.1	445.4	446.1	116.0	35.0	0.7
.....Private Educational Services	52.2	63.3	65.1	66.4	14.2	3.1	1.3
.....Health Care & Social Assistance	277.9	347.8	380.3	379.7	101.8	31.9	-0.6
Manufacturing	671.1	427.9	518.3	518.0	-153.1	90.1	-0.3
Professional & Business Services	260.5	255.9	320.9	323.4	62.9	67.5	2.5
Financial Activities	145.7	130.7	130.5	129.3	-16.4	-1.4	-1.2
Construction	154.1	116.5	120.1	122.5	-31.6	6.0	2.4
Leisure and Hospitality	267.2	276.8	297.7	298.9	31.7	22.1	1.2
Trade, Transportation & Utilities	617.5	545.7	589.8	596.2	-21.3	50.5	6.4
.....Trade	485.1	421.6	444.5	448.5	-36.6	26.9	4.0
.....Transportation, Warehousing & Utilities	132.4	124.1	145.3	147.7	15.3	23.6	2.4
All Other	166.4	158.6	171.5	170.4	4.0	11.8	-1.1
Total Private	2,612.6	2,323.2	2,594.2	2,604.8	-7.8	281.6	10.6
Government (Includes Public Schools & Hospitals)	404.6	434.5	428.3	429.3	24.7	-5.2	1.0
Total Nonfarm	3,017.2	2,757.7	3,022.5	3,034.1	16.9	276.4	11.6
United States Total Private	110,873.0	108,098.0	119,247.0	119,460.0	8,587.0	11,362.0	213.0



## IN Statewide Estimates (seasonally adjusted) -- April 2015

Supersector	Private Empl. Peak March 2000	Private Empl. Trough July 2009	March 2015	April 2015	% Chg. Since Peak	% Chg. Since Trough	% Month to Month Change
Private Educational & Health Services	330.1	411.1	445.4	446.1	35.1%	8.5%	0.2%
.....Private Educational Services	52.2	63.3	65.1	66.4	27.2%	4.9%	2.0%
.....Health Care & Social Assistance	277.9	347.8	380.3	379.7	36.6%	9.2%	-0.2%
Manufacturing	671.1	427.9	518.3	518.0	-22.8%	21.1%	-0.1%
Professional & Business Services	260.5	255.9	320.9	323.4	24.1%	26.4%	0.8%
Financial Activities	145.7	130.7	130.5	129.3	-11.3%	-1.1%	-0.9%
Construction	154.1	116.5	120.1	122.5	-20.5%	5.2%	2.0%
Leisure and Hospitality	267.2	276.8	297.7	298.9	11.9%	8.0%	0.4%
Trade, Transportation & Utilities	617.5	545.7	589.8	596.2	-3.4%	9.3%	1.1%
.....Trade	485.1	421.6	444.5	448.5	-7.5%	6.4%	0.9%
.....Transportation, Warehousing & Utilities	132.4	124.1	145.3	147.7	11.6%	19.0%	1.7%
All Other	166.4	158.6	171.5	170.4	2.4%	7.4%	-0.6%
Total Private	2,612.6	2,323.2	2,594.2	2,604.8	-0.3%	12.1%	0.4%
Government (Includes Public Schools & Hospitals)	404.6	434.5	428.3	429.3	6.1%	-1.2%	0.2%
Total Nonfarm	3,017.2	2,757.7	3,022.5	3,034.1	0.6%	10.0%	0.4%
United States Total Private	110,873.0	108,098.0	119,247.0	119,460.0	7.7%	10.5%	0.2%

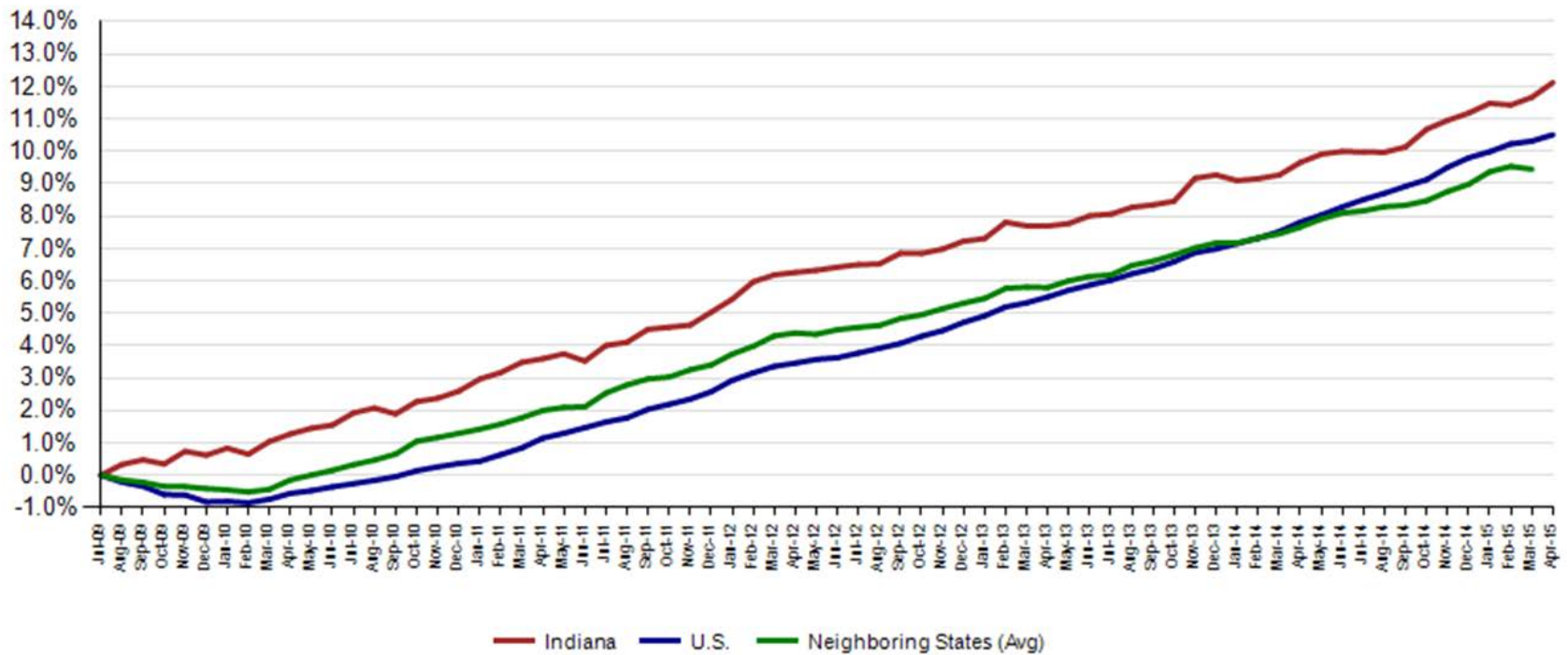


### IN Employment Change Compared to the U.S. -April 2015

Industry	Month to Month			Year-to-Date			Year-to-Year		
	Indiana	U.S.	Indiana vs U.S.	Indiana	U.S.	Indiana vs U.S.	Indiana	U.S.	Indiana vs U.S.
Private Educational & Health Services	0.2%	0.3%	UNDER	1.0%	0.9%	OVER	1.9%	2.6%	UNDER
.....Private Educational Services	2.0%	0.2%	OVER	1.4%	0.7%	OVER	2.6%	1.7%	OVER
.....Health Care & Social Assistance	-0.2%	0.3%	UNDER	1.0%	1.0%	OVER	1.8%	2.8%	UNDER
Manufacturing	-0.1%	0.0%	UNDER	0.7%	0.2%	OVER	2.7%	1.5%	OVER
Professional & Business Services	0.8%	0.3%	OVER	-1.5%	0.9%	UNDER	0.9%	3.5%	UNDER
Financial Activities	-0.9%	0.1%	UNDER	-1.2%	0.5%	UNDER	1.3%	1.9%	UNDER
Construction	2.0%	0.7%	OVER	-0.3%	1.7%	UNDER	0.0%	4.6%	UNDER
Leisure and Hospitality	0.4%	0.1%	OVER	1.3%	0.6%	OVER	2.1%	3.0%	UNDER
Trade, Transportation & Utilities	1.1%	0.1%	OVER	2.5%	0.5%	OVER	3.9%	2.1%	OVER
.....Trade	0.9%	0.0%	OVER	1.9%	0.6%	OVER	2.7%	1.8%	OVER
.....Transportation, Warehousing & Utils	1.7%	0.3%	OVER	4.5%	0.4%	OVER	7.4%	3.4%	OVER
All Other	-0.6%	-0.1%	UNDER	1.2%	-0.1%	OVER	1.2%	1.1%	OVER
Total Private	0.4%	0.2%	OVER	0.8%	0.6%	OVER	2.2%	2.5%	UNDER
Government (Includes Public Schools & Hospitals)	0.2%	0.0%	OVER	0.0%	0.0%	OVER	0.5%	0.3%	OVER
Total Nonfarm	0.4%	0.2%	OVER	0.7%	0.6%	OVER	2.0%	2.2%	UNDER



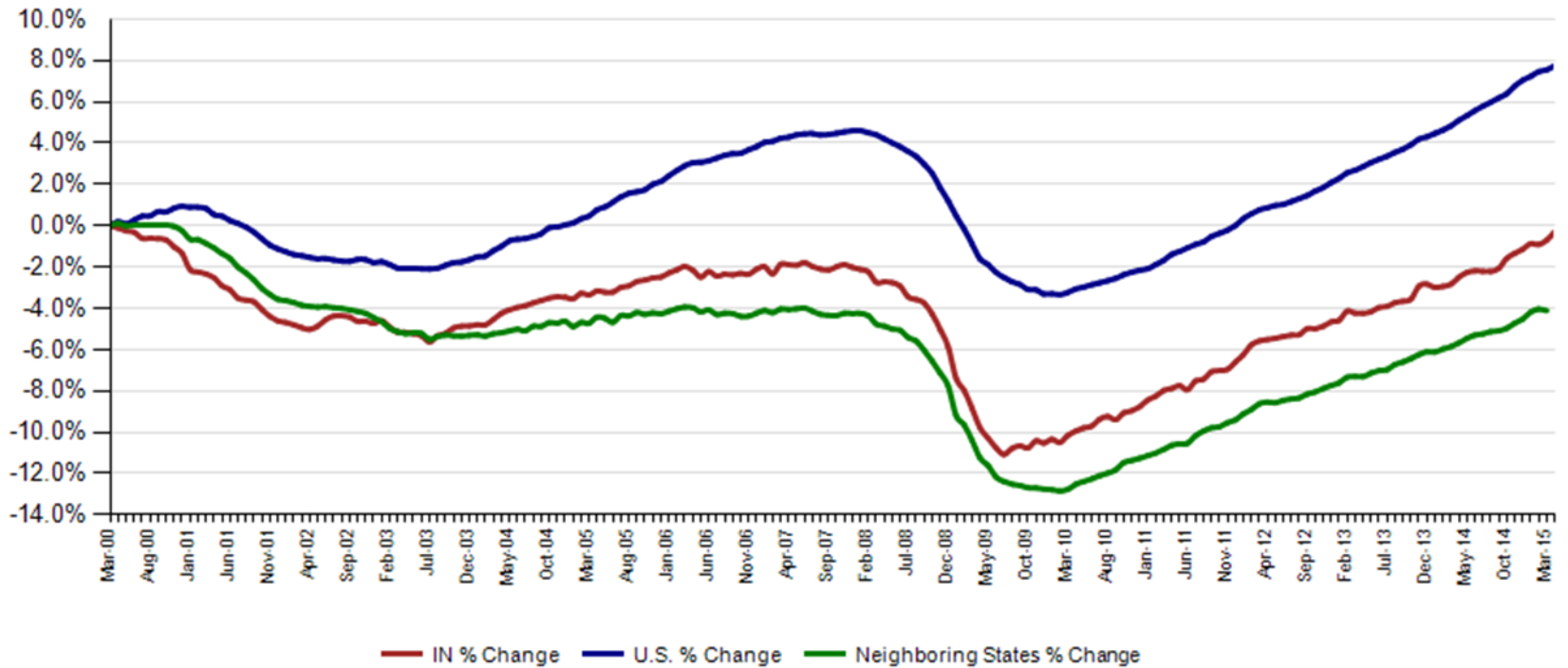
### Private Sector Job Growth Since the Low Point of Employment in Indiana



Source: Current Employment Statistics, seasonally adjusted



### Private Sector Job Growth Since the Peak of Employment in Indiana



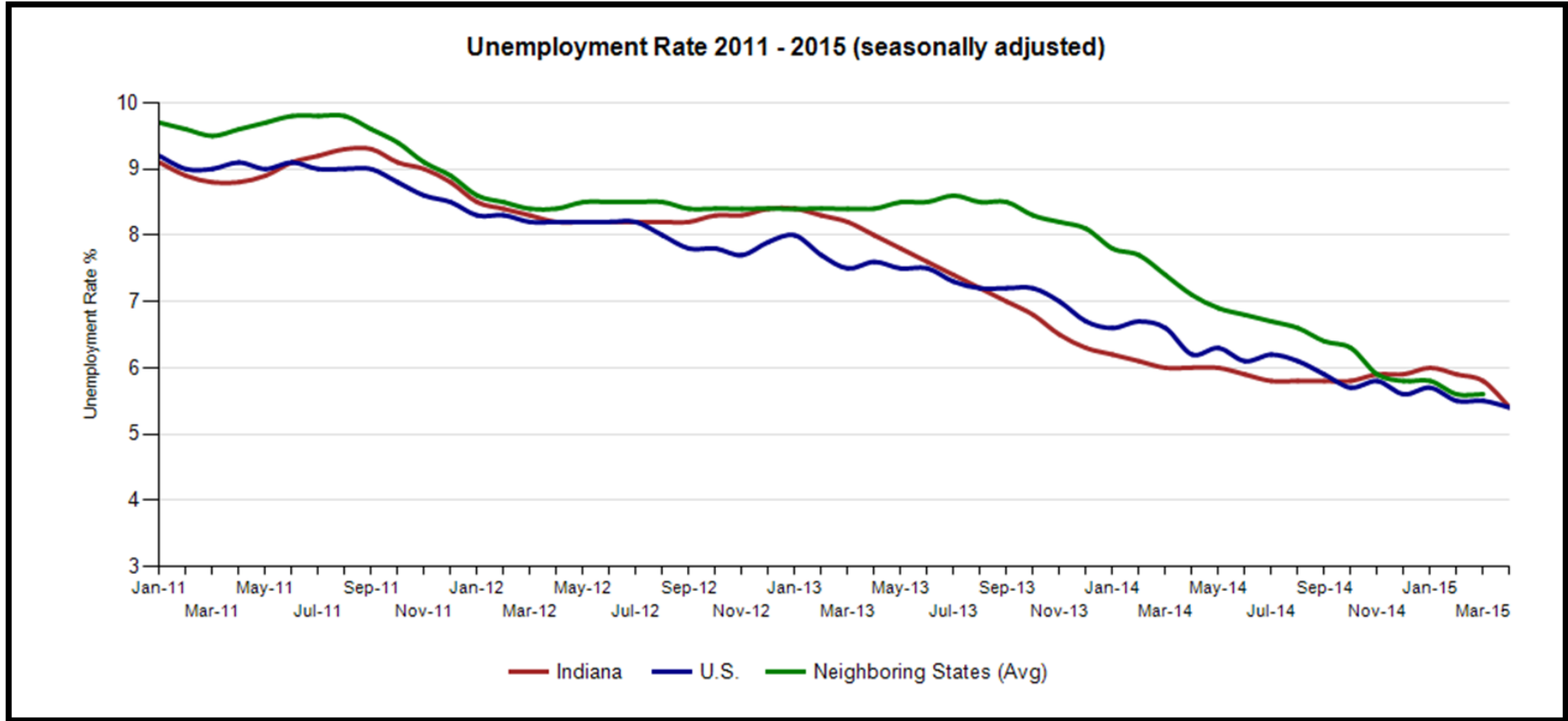
Source: Current Employment Statistics, seasonally adjusted



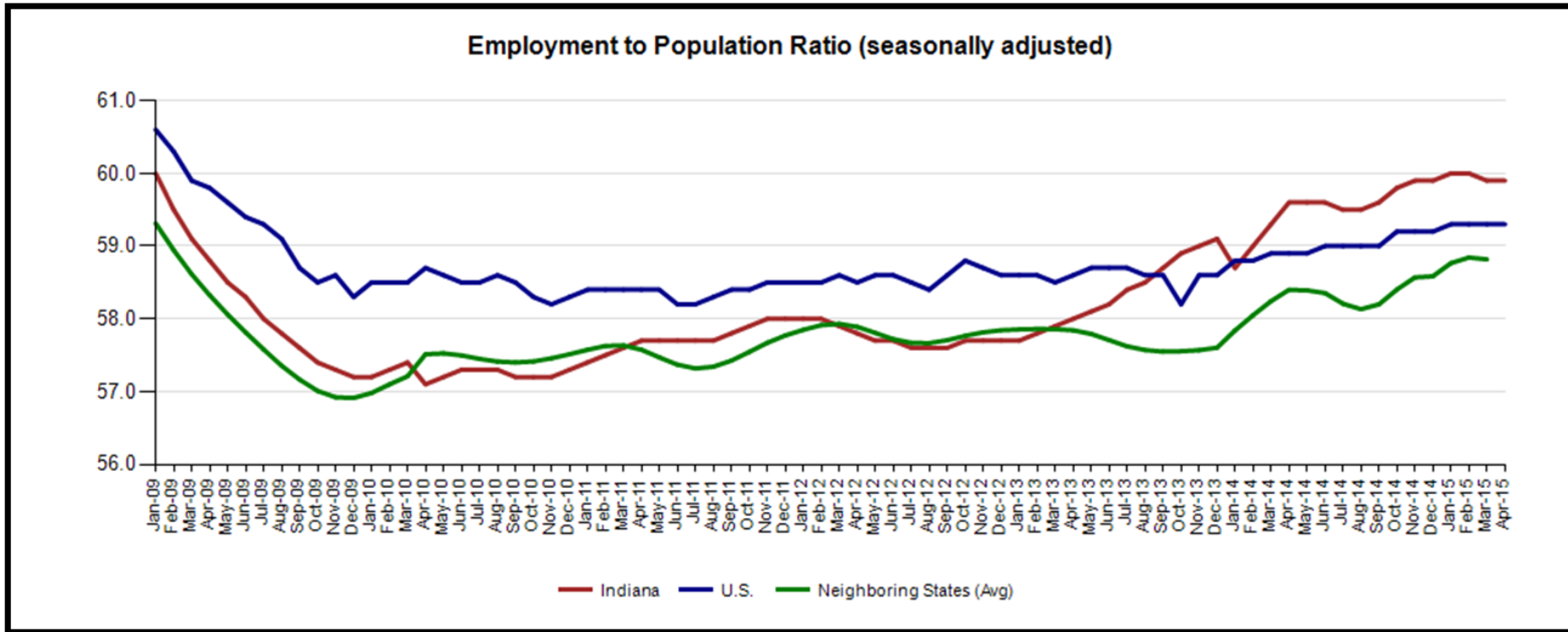


## Midwest Comparison Rates: Seasonally Adjusted Over the Year and Over the Month (confidential and preliminary)

	<b>April 2014</b>	<b>March 2015</b>	<b>April 2015</b>	<b>Monthly change</b>	<b>Yearly change</b>
Indiana	6.0%	5.8%	5.4%	-0.4%	-0.6%
U.S.	6.2%	5.5%	5.4%	-0.1%	-0.8%
Illinois	7.4%	6.0%		-6.0%	-7.4%
Kentucky	7.0%	5.1%	5.0%	-0.1%	-2.0%
Michigan	7.5%	5.6%	5.4%	-0.2%	-2.1%
Ohio	5.9%	5.1%	5.2%	0.1%	-0.7%



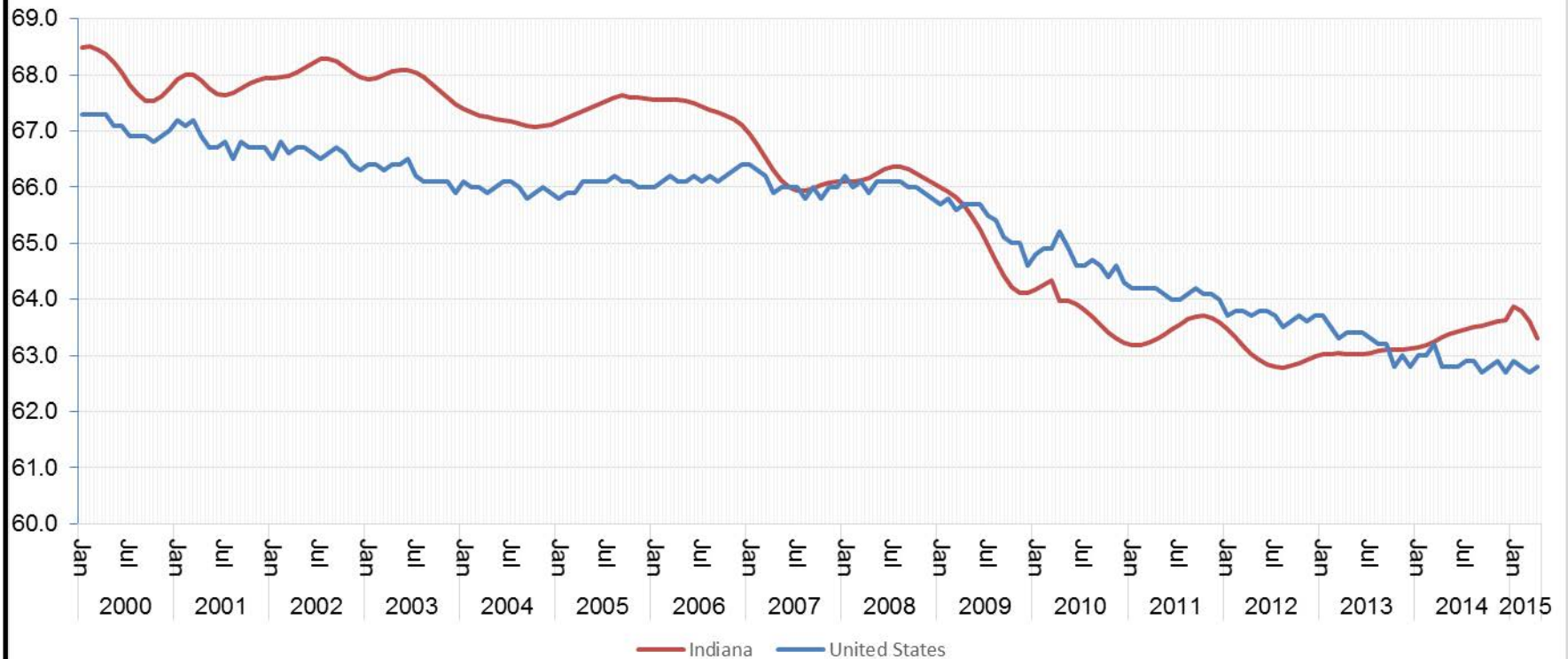
Source: Local Area Unemployment Statistics



Source: Local Area Unemployment Statistics

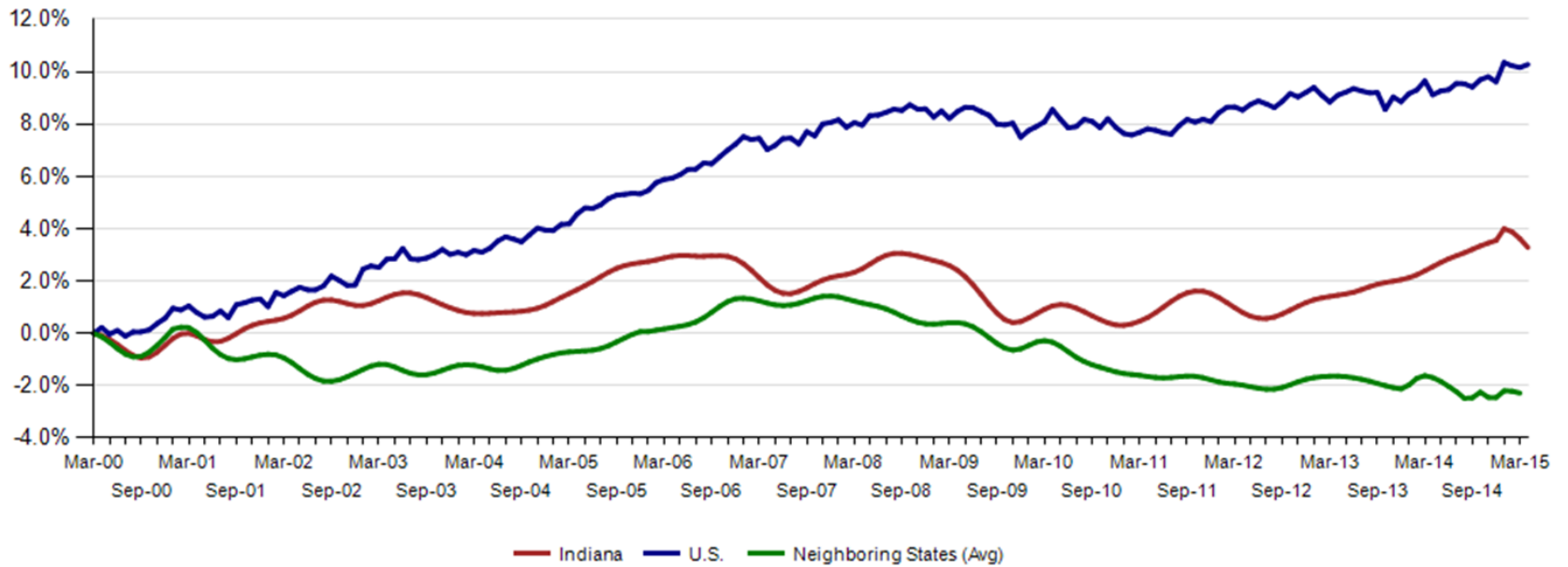


## Labor Force Participation, Indiana and the U.S.

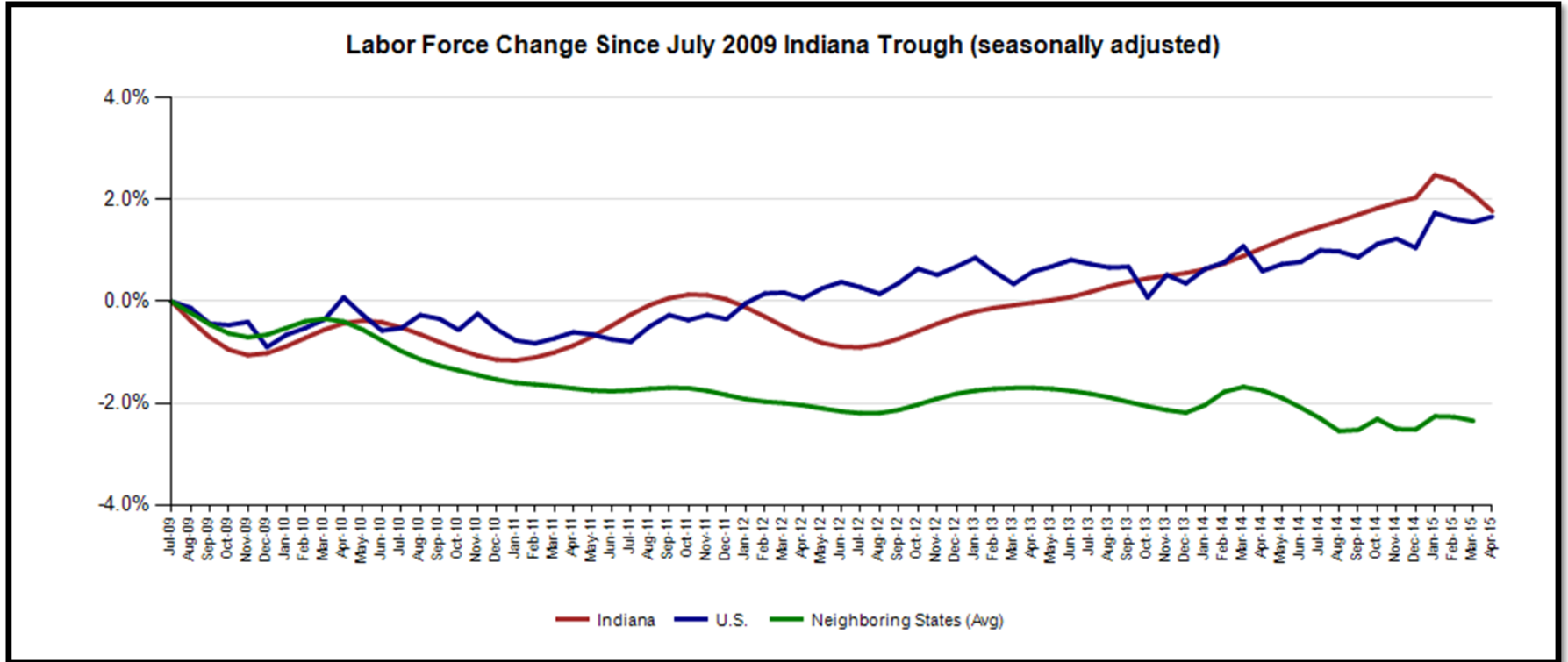




Labor Force Change Since March 2000 Indiana Peak (seasonally adjusted)



Source: Local Area Unemployment Statistics



Source: Local Area Unemployment Statistics



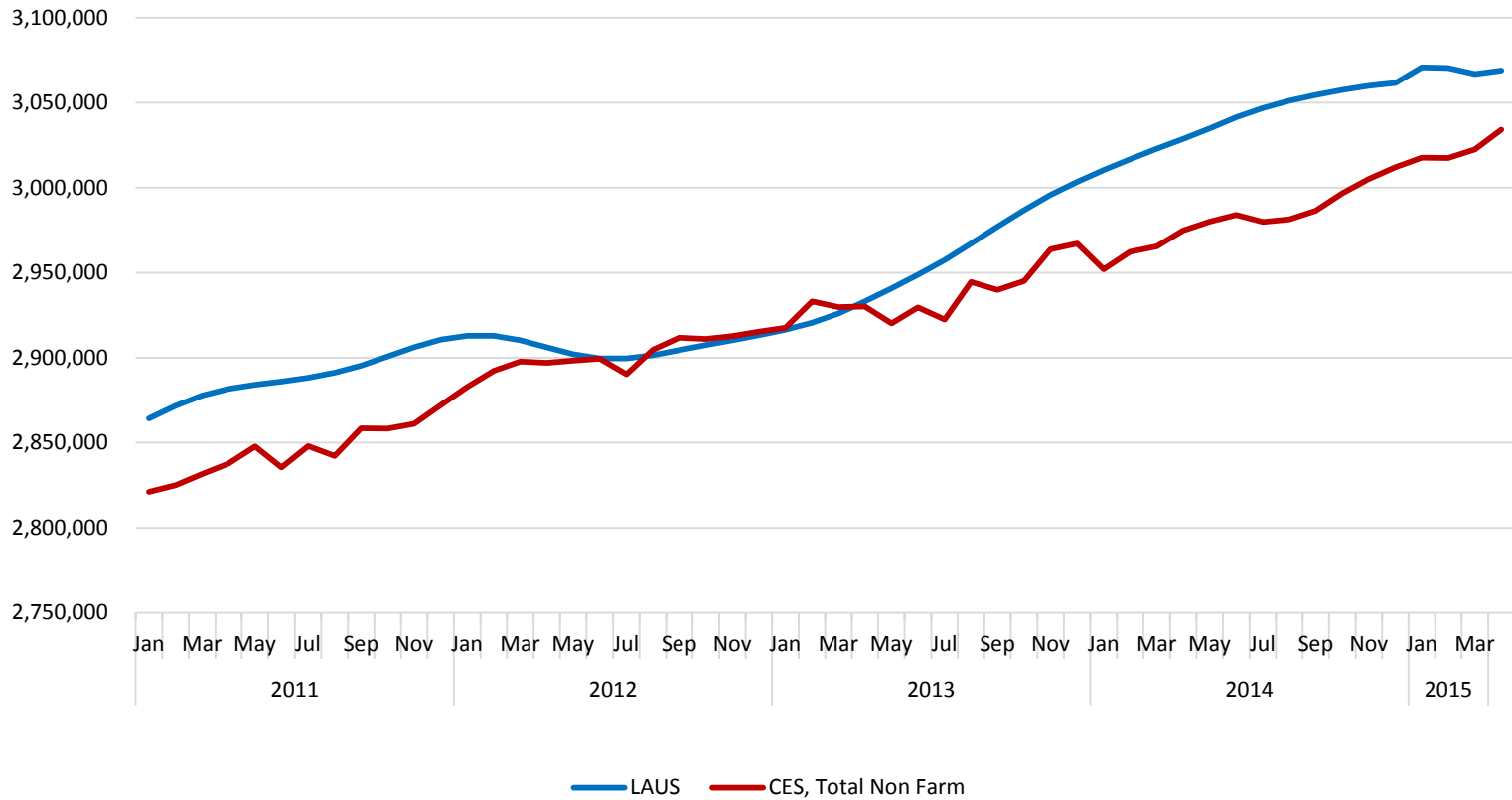
Current Employment Statistics (CES) and Local Area Unemployment Statistics (LAUS)  
 Point in Time Comparison

	March 2000 (Peak)	July 2009 (Trough)	March 2015	April 2015	Change Peak	Change Trough	Change Prev. Month
CES Employed	3,017.2	2,757.7	3,022.5	3,034.1	16.9	276.4	11.6
LAUS Employed	3,039.1	2,847.9	3,066.8	3,068.8	29.7	220.9	2.0
LAUS Unemployed	102.9	340.8	188.9	176.3	73.4	-164.4	-12.6
Labor Force	3,142.1	3,188.7	3,255.7	3,245.2	103.1	56.5	-10.6
Unemployment Rate	3.3	10.7	5.8	5.4	2.1	-5.3	-0.4

*(LAUS components may not sum exactly due to rounding.)*



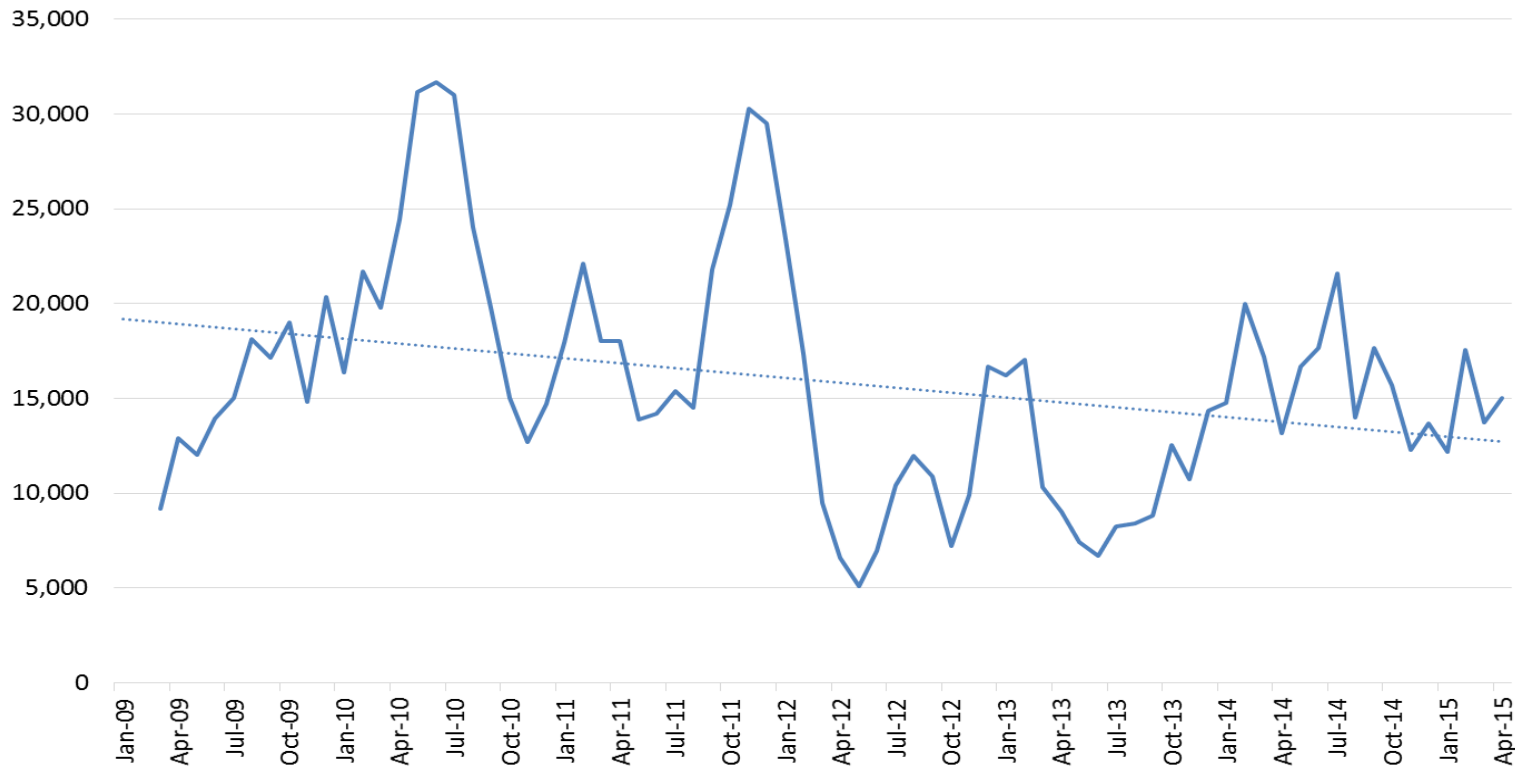
### CES Total Nonfarm and LAUS Employment, seasonally adjusted





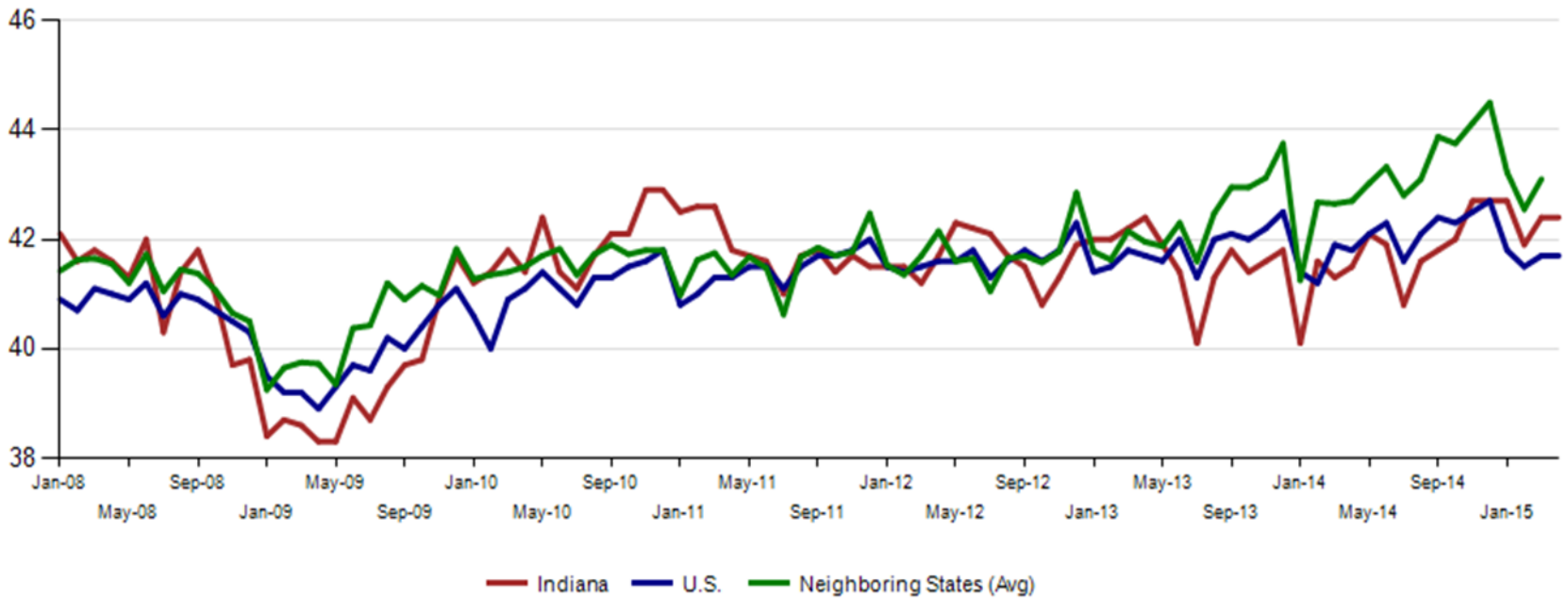


CPS Survey Data : Discouraged Workers  
21,500 on Average During 2010  
16,500 on Average During 2014





**Avg. Weekly Manufacturing Production Hours (non seasonally adjusted)**



Source: Current Employment Statistics, not seasonally adjusted

MSA Estimates:  
2000 And Over-the-Year Change  
Ranked on percentage change over-the-year  
(no seasonal adjustment)

**IN Metropolitan Area Employment Estimates**

MSA	April 2000	April 2014	March 2015	April 2015	April 2015 Change	Change since 2000	% Chg since 2000	Annual Change	Annual % Change
Elkhart-Goshen	128,900	122,800	126,100	127,700	1,600	-1,200	-0.9%	4,900	4.0%
Columbus	45,200	50,200	51,300	51,700	400	6,500	14.4%	1,500	3.0%
Indianapolis-Carmel-Anderson	894,600	988,000	1,005,900	1,016,600	10,700	122,000	13.6%	28,600	2.9%
Evansville	162,700	155,200	156,600	158,500	1,900	-4,200	-2.6%	3,300	2.1%
Kokomo	51,000	40,100	40,600	40,900	300	-10,100	-19.8%	800	2.0%
South Bend	150,500	135,100	136,300	136,500	200	-14,000	-9.3%	1,400	1.0%
Muncie	58,800	50,500	50,400	51,000	600	-7,800	-13.3%	500	1.0%
Lafayette-West Lafayette	95,600	101,100	100,900	102,100	1,200	6,500	6.8%	1,000	1.0%
Gary Division	284,300	273,700	272,800	276,400	3,600	-7,900	-2.8%	2,700	1.0%
Bloomington	74,700	77,100	76,900	77,700	800	3,000	4.0%	600	0.8%
Fort Wayne	220,100	213,100	210,700	214,500	3,800	-5,600	-2.5%	1,400	0.7%
Michigan City	50,300	41,900	40,900	41,800	900	-8,500	-16.9%	-100	-0.2%
Terre Haute	78,500	70,800	70,000	70,100	100	-8,400	-10.7%	-700	-1.0%