



HOOSIERS BY THE NUMBERS

Your premier source for labor market information for Indiana.

DWD

INDIANA DEPARTMENT OF
WORKFORCE
DEVELOPMENT

LABOR MARKET REVIEW



September 2022 Labor Market Review

Reported by: Jillian Gregory

Regional Workforce Analyst

[Email Jillian](#)

jgregory@dwd.in.gov

Tel: 812-270-9467

DWD

INDIANA DEPARTMENT OF
WORKFORCE
DEVELOPMENT

Economic Growth Region 9

Statistical Data Report for September 2022, Released November 2022

State Employment and Unemployment

Unemployment rates were lower in September in 11 states and the District of Columbia, higher in 9 states, and stable in 30 states, the U.S. Bureau of Labor Statistics reported. Forty-six states and the District had jobless rate decreases from a year earlier and four states had little change. The national unemployment rate edged down to 3.5 percent over the month and was 1.2 percentage points lower than in September 2021.

Nonfarm payroll employment increased in 9 states, decreased in 1 state, and was essentially unchanged in 40 states and the District of Columbia in September 2022. Over the year, nonfarm payroll employment increased in 49 states and the District and was essentially unchanged in 1 state.

Minnesota had the lowest jobless rate in September, 2.0 percent. The next lowest rates were in Utah and Vermont, 2.1 percent each. The rates in Alaska (4.4 percent), Louisiana (3.4 percent), and Missouri (2.4 percent) set new series lows. (All state series begin in 1976.) The District of Columbia had the highest unemployment rate, 4.7 percent, followed by Illinois, 4.5 percent. In total, 17 states had unemployment rates lower than the U.S. figure of 3.5 percent, 8 states and the District had higher rates, and 25 states had rates that were not appreciably different from that of the nation.



Economic Growth Region (EGR) 9

Bartholomew, Dearborn, Decatur, Franklin, Jackson, Jefferson, Jennings, Ohio, Ripley, and Switzerland Counties

September 2022 Labor Force Estimates (not seasonally adjusted)						
Area	Labor Force	Employed	Unemployed	Sep-22	Aug-22	Sep-21
U.S.	164,463,000	159,003,000	5,460,000	3.3%	3.8%	4.6%
IN	3,370,633	3,295,072	75,561	2.2%	3.1%	2.9%
EGR 9	166,360	163,155	3,205	1.9%	2.6%	2.4%
Columbus MSA	43,338	42,562	776	1.8%	2.4%	2.3%
Bartholomew Co.	43,338	42,562	776	1.8%	2.4%	2.3%
Dearborn Co.	25,322	24,833	489	1.9%	2.6%	2.4%
Decatur Co.	14,395	14,134	261	1.8%	2.4%	2.3%
Franklin Co.	11,335	11,125	210	1.9%	2.4%	2.2%
Jackson Co.	23,325	22,881	444	1.9%	2.6%	2.5%
Jefferson Co.	14,966	14,652	314	2.1%	2.9%	2.6%
Jennings Co.	13,276	12,992	284	2.1%	2.9%	2.9%
Ohio Co.	3,140	3,085	55	1.8%	2.0%	2.0%
Ripley Co.	12,650	12,376	274	2.2%	2.7%	2.3%
Switzerland Co.	4,613	4,515	98	2.1%	3.0%	2.7%
Batesville	3,344	3,284	60	1.8%	2.3%	1.5%
Brookville	1,088	1,060	28	2.6%	3.4%	2.8%
Columbus	24,795	24,336	459	1.9%	2.5%	2.3%
Greensburg	6,368	6,237	131	2.1%	2.7%	3.0%
Lawrenceburg	1,932	1,874	58	3.0%	3.6%	4.0%
Madison	5,407	5,294	113	2.1%	2.7%	3.2%
North Vernon	2,819	2,754	65	2.3%	3.5%	3.6%
Seymour	10,620	10,382	238	2.2%	2.7%	2.6%

Unemployment Rates by State (seasonally adjusted): September 2022

U.S. - 3.5%

Illinois - 4.5%

Indiana - 2.8%

Kentucky - 3.8%

Michigan - 4.1%

Ohio - 4%

Source: U.S. Department of Labor, Bureau of Labor Statistics

Unemployment Rank by County (of 92 counties): September 2022

#37 - Ripley (2.2%)

#42 - Jefferson (2.1%)

#43 - Jennings (2.1%)

#44 - Switzerland (2.1%)

#56 - Dearborn (1.9%)

#58 - Franklin (1.9%)

#60 - Jackson (1.9%)

#69 - Bartholomew (1.8%)

#72 - Decatur (1.8%)

#78 - Ohio (1.8%)

Source: Indiana Department of Workforce Development, Research and Development, Local Area Unemployment Statistics

Source: Indiana Department of Workforce Development, Research & Analysis, Local Area Unemployment Statistics | Unemployment Statistics Released: 10/22 | Notes: The data displayed are presented as estimates only. The most recent month's data are always preliminary and are revised when the next month's data are released.

Consumer Price Index (CPI-U Change), Unadjusted Percent Change to September 2022 from				
CPI Item	Sep-21	Aug-22	Sep-21	Aug-22
	U.S. City		Midwest Region*	
All Items	8.2%	0.2%	8.1%	0.2%
Food & Beverages	10.8%	0.7%	12.0%	0.7%
Housing	8.0%	0.7%	7.2%	0.4%
Apparel	5.5%	2.2%	6.0%	2.3%
Transportation	12.6%	-1.6%	12.2%	-0.9%
Medical Care	6.0%	0.5%	5.5%	0.5%
Recreation	4.1%	0.1%	6.7%	0.5%
Education & Communication	0.2%	0.3%	-0.3%	0.2%
Other Goods & Services	6.9%	0.3%	7.9%	0.6%

*Midwest region = Midwest Urban Average. Midwest Region includes Illinois, Indiana, Iowa, Kansas, Michigan, Minnesota, Missouri, Nebraska, North Dakota, Ohio, South Dakota and Wisconsin | Source: U.S. Bureau of Labor Statistics

Unemployment Claims: September 2022

Region 9

Initial Claims
 09/03/22 - 68(D)
 09/10/22 - 50(D)
 09/17/22 - 59(D)
 09/24/22 - 47(D)

Continued Claims
 09/03/22 - 352
 09/10/22 - 346
 09/17/22 - 323
 09/24/22 - 304

Total Claims
 09/03/22 - 420
 09/10/22 - 396
 09/17/22 - 382
 09/24/22 - 351

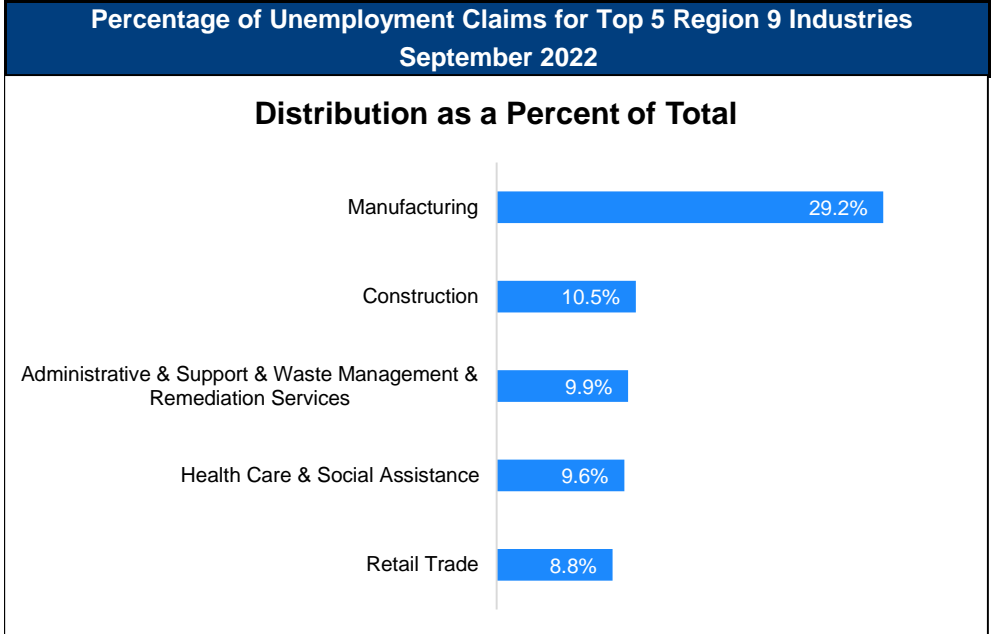
State of Indiana

Initial Claims
 09/03/22 - 3,933
 09/10/22 - 4,671
 09/17/22 - 3,568
 09/24/22 - 3,110

Continued Claims
 09/03/22 - 23,117
 09/10/22 - 18,866
 09/17/22 - 17,447
 09/24/22 - 19,724

Total Claims
 09/03/22 - 27,050
 09/10/22 - 23,537
 09/17/22 - 21,015
 09/24/22 - 22,834

(D) indicates item is affected by non-disclosure issues relating to industry or ownership status | Source: Indiana Department of Workforce Development, Research and Development



Source: Indiana Department of Workforce Development, Research and Analysis

WARN Notices

WARN Notices for Region 9 for September 2022				
Company	City	County	# of workers affected	Notice Date

There are no WARN Notices for September 2022 for EGR 9.

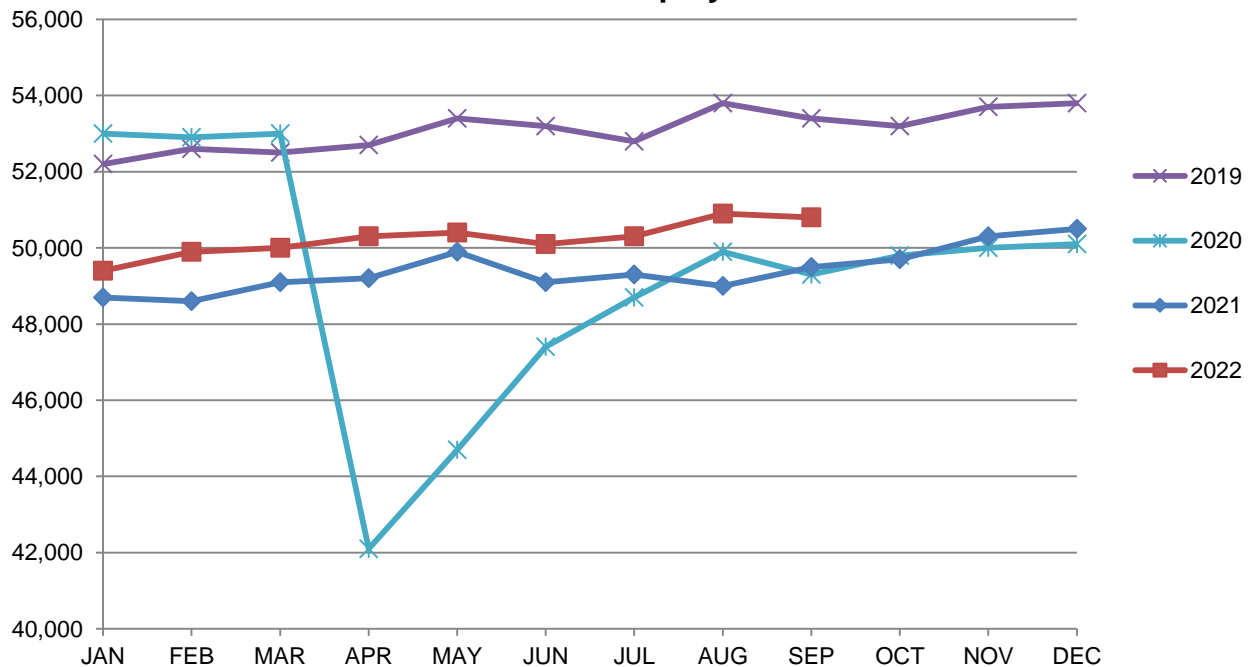
Source: Indiana Department of Workforce Development, WARN Notices | For information on WARN Act requirements, you may go to the U.S. Department of Labor Employment Training Administration Fact Sheet:

<https://www.doleta.gov/programs/factsheet/warn.htm>

Columbus MSA							
Wage and Salaried Employment	September 2022			# Change	% Change	# Change	% Change
Industry	Sep-22	Aug-22	Sep-21	Aug-22 to Sep-22	Sep-21 to Sep-22		
Total Nonfarm	50,800	50,900	49,500	-100	-0.2%	1,300	2.6%
Total Private	45,300	45,500	43,800	-200	-0.4%	1,500	3.4%
Goods Producing	20,900	20,900	20,100	0	0.0%	800	4.0%
Service-Providing	29,900	30,000	29,400	-100	-0.3%	500	1.7%
Private Service Providing	24,400	24,600	23,700	-200	-0.8%	700	3.0%
Mining, Logging and Construction	1,900	1,900	1,800	0	0.0%	100	5.6%
Manufacturing	19,000	19,000	18,300	0	0.0%	700	3.8%
Durable Goods	16,600	16,800	16,200	-200	-1.2%	400	2.5%
Trade, Transportation, and Utilities	7,500	7,700	7,500	-200	-2.6%	0	0.0%
Retail Trade	4,600	4,700	4,800	-100	-2.1%	-200	-4.2%
Information	300	300	300	0	0.0%	0	0.0%
Financial Activities	1,500	1,500	1,500	0	0.0%	0	0.0%
Professional and Business Services	4,900	4,900	4,700	0	0.0%	200	4.3%
Education and Health Services	4,600	4,500	4,400	100	2.2%	200	4.6%
Leisure and Hospitality	4,100	4,200	3,900	-100	-2.4%	200	5.1%
Other Services	1,500	1,500	1,400	0	0.0%	100	7.1%
Total Government	5,500	5,400	5,700	100	1.9%	-200	-3.5%
Federal Government	200	200	200	0	0.0%	0	0.0%
State Government	800	700	800	100	14.3%	0	0.0%
Local Government	4,500	4,500	4,700	0	0.0%	-200	-4.3%
Local Government Educational Services	1,900	1,800	2,000	100	5.6%	-100	-5.0%

Source: Indiana Dept of Workforce Development, Research and Analysis, Current Employment Statistics

Columbus MSA Employment Trends



Source: Indiana Department of Workforce Development, Research & Analysis, Current Employment Statistics | Note: Historical data for the most recent 4 years (both seasonally adjusted and not seasonally adjusted) are revised near the beginning of each calendar year, prior to the release of January estimates for statewide data.

Frequently Listed Jobs	
Top 20 job listings in Region 9 in the past month	
Rank	Occupations
1	Social and Human Service Assistants
2	Registered Nurses
3	Janitors and Cleaners, Except Maids and Housekeeping Cleaners
4	Nursing Assistants
5	Software Developers
6	Licensed Practical and Licensed Vocational Nurses
7	Maintenance and Repair Workers, General
8	Home Health Aides
9	Customer Service Representatives
10	Industrial Engineers
11	Physical Therapists
12	Mental Health and Substance Abuse Social Workers
13	Security Guards
14	First-Line Supervisors of Production and Operating Workers
15	Maids and Housekeeping Cleaners
16	Personal Care Aides
17	Production Workers, All Other
18	Computer User Support Specialists
19	Food Preparation Workers
20	Cooks, Fast Food

Applicant Pool	
Top 20 occupations desired by applicants on their resumes in the past 12 months	
Occupations	# of Applicants
Production Workers, All Other	854
Assemblers and Fabricators, All Other	687
Helpers--Production Workers	426
Cashiers	299
Customer Service Representatives	277
Laborers and Freight, Stock, and Material Movers, Hand	264
Office Clerks, General	212
Extraction Workers, All Other	181
Office and Administrative Support Workers, All Other	179
Industrial Truck and Tractor Operators	178
Construction Laborers	165
Managers, All Other	161
Inspectors, Testers, Sorters, Samplers, and Weighers	157
Heavy and Tractor-Trailer Truck Drivers	154
Retail Salespersons	153
First-Line Supervisors of Production and Operating Workers	146
Electrical and Electronic Equipment Assemblers	143
Receptionists and Information Clerks	134
Construction and Related Workers, All Other	134
Waiters and Waitresses	133

Source: Indiana Workforce Development, Indiana Career Connect

Source: Indiana Workforce Development, Indiana Career Connect

Released Oct. 21, 2022

UNEMPLOYMENT RATE *seasonally adjusted



August 2022
Indiana was

2.8%



National
Unemployment
Rate is



LABOR FORCE PARTICIPATION RATE

Labor Force
Participation Rate

63.4%



National Labor Force Rate



143,452

Open Job Postings
*As of Oct. 19, 2022



16,537

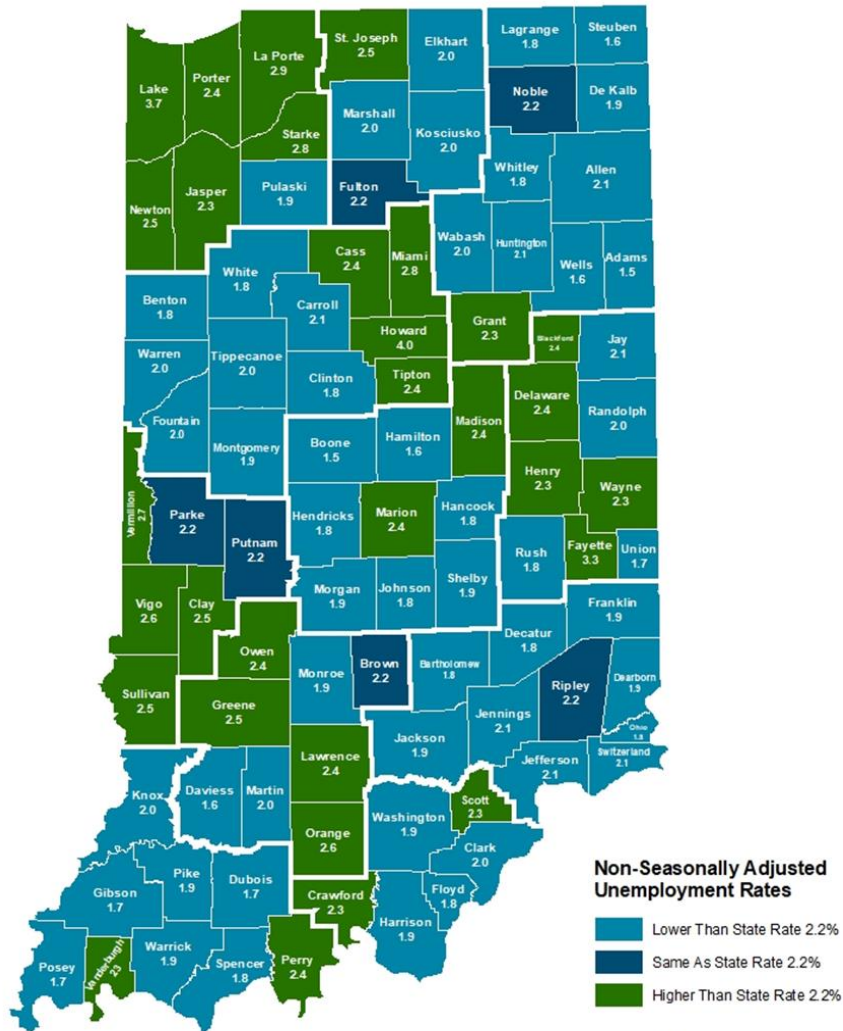
People Receiving
Unemployment Benefits

unique unemployment claims paid



Source: Local Area Unemployment Statistics, Bureau of Labor Statistics, Indiana Government Center

County Unemployment Rates September 2022



Indiana Non-Seasonally Adjusted Rate 2.2%
 Indiana Seasonally Adjusted Rate 2.8%
 Source: DWD, Local Area Unemployment Statistics



Questions?

Please contact the DWD Research and Analysis Regional Labor Analyst listed below:

Jillian A. Gregory
 Regional Workforce Analyst
 Research and Analysis

[Indiana Department of Workforce Development](https://www.in.gov/workforce)

812-270-9467

jgregory@dwd.in.gov