

LABOR MARKET REVIEW



March 2021 Labor Market Review

Reported by: Jillian Gregory

Regional Workforce Analyst

[Email Jillian](#)

jgregory@dwd.in.gov

Tel: 812-537-2485



LABOR MARKET REVIEW

Economic Growth Region 9

Statistical Data Report for March 2021, Released May 2021

State Employment and Unemployment

Unemployment rates were lower in March in 20 states and the District of Columbia and stable in 30 states, the U.S. Bureau of Labor Statistics reported. Forty states and the District had jobless rate increases from a year earlier and 10 states had little or no change. The national unemployment rate, 6.0 percent, edged down by 0.2 percentage point over the month, but was 1.6 points higher than in March 2020.

Nonfarm payroll employment increased in 29 states and was essentially unchanged in 21 states and the District of Columbia in March 2021. Over the year, nonfarm payroll employment decreased in 46 states and the District and was essentially unchanged in 4 states.

Hawaii and New York had the highest unemployment rates in March, 9.0 percent and 8.5 percent, respectively. Nebraska, South Dakota, Utah, and Vermont had the lowest rates, 2.9 percent each. In total, 27 states had unemployment rates lower than the U.S. figure of 6.0 percent, 11 states and the District of Columbia had higher rates, and 12 states had rates that were not appreciably different from that of the nation.



Economic Growth Region (EGR) 9

Bartholomew, Dearborn, Decatur, Franklin, Jackson, Jefferson, Jennings, Ohio, Ripley, and Switzerland Counties

March 2021 Labor Force Estimates (not seasonally adjusted)						
Area	Labor Force	Employed	Unemployed	Mar-21	Feb-21	Mar-20
U.S.	160,397,000	150,493,000	9,905,000	6.2%	6.6%	4.5%
IN	3,296,498	3,142,693	153,805	4.7%	4.7%	3.7%
EGR 9	167,626	160,659	6,967	4.2%	4.2%	3.4%
Columbus MSA	43,696	42,030	1,666	3.8%	3.9%	2.7%
Bartholomew Co.	43,696	42,030	1,666	3.8%	3.9%	2.7%
Dearborn Co.	24,973	23,853	1,120	4.5%	4.3%	4.1%
Decatur Co.	14,698	14,126	572	3.9%	3.9%	3.3%
Franklin Co.	11,135	10,676	459	4.1%	4.0%	4.1%
Jackson Co.	23,303	22,360	943	4.0%	4.1%	2.8%
Jefferson Co.	14,901	14,264	637	4.3%	4.3%	3.7%
Jennings Co.	13,555	12,883	672	5.0%	5.4%	3.8%
Ohio Co.	3,107	2,981	126	4.1%	3.8%	3.8%
Ripley Co.	13,691	13,154	537	3.9%	4.0%	3.7%
Switzerland Co.	4,567	4,332	235	5.1%	5.1%	3.9%
Batesville	3,506	3,379	127	3.6%	3.4%	3.6%
Brookville	1,055	1,018	37	3.5%	4.4%	7.0%
Columbus	24,963	24,024	939	3.8%	3.8%	2.6%
Greensburg	6,454	6,191	263	4.1%	4.0%	3.0%
Lawrenceburg	1,906	1,798	108	5.7%	6.4%	6.1%
Madison	5,421	5,171	250	4.6%	4.5%	3.8%
North Vernon	2,901	2,740	161	5.5%	6.4%	4.8%
Seymour	10,528	10,075	453	4.3%	4.3%	2.8%

Unemployment Rates by State (seasonally adjusted): March 2021

U.S. - 6%

Illinois - 7.1%

Indiana - 3.9%

Kentucky - 5%

Michigan - 5.1%

Ohio - 4.7%

Source: U.S. Department of Labor, Bureau of Labor Statistics

Unemployment Rank by County (of 92 counties): March 2021

#14 - Switzerland(5.1%)

#17 - Jennings(5%)

#33 - Dearborn(4.5%)

#40 - Jefferson(4.3%)

#47 - Franklin(4.1%)

#49 - Ohio(4.1%)

#52 - Jackson(4%)

#57 - Decatur(3.9%)

#61 - Ripley(3.9%)

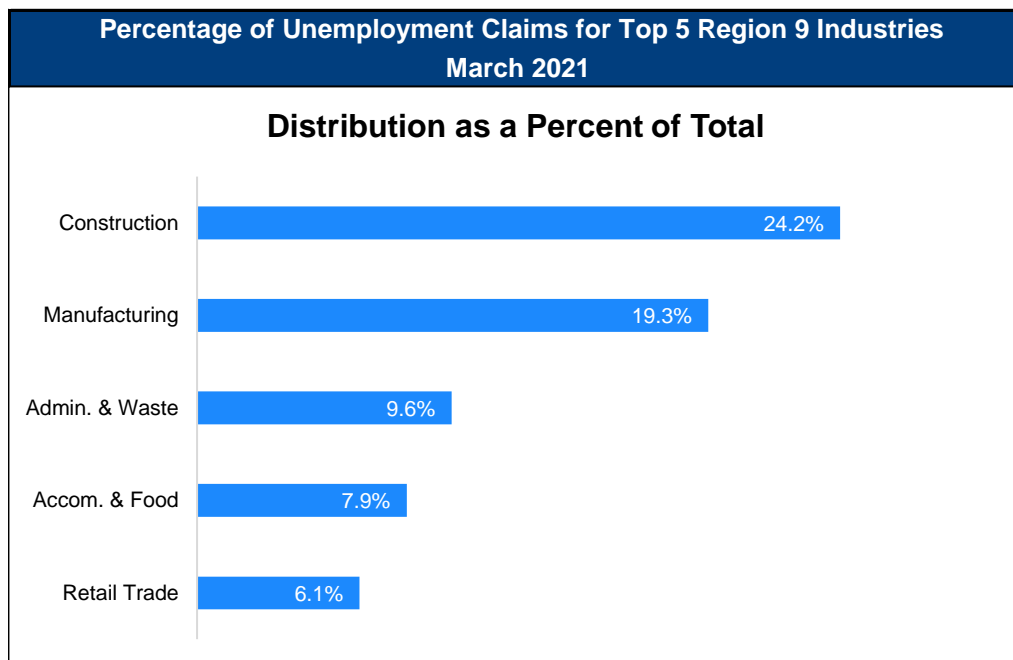
#62 - Bartholomew(3.8%)

Source: Indiana Department of Workforce Development, Research and Development, Local Area Unemployment Statistics

Source: Indiana Department of Workforce Development, Research & Analysis, Local Area Unemployment Statistics | Unemployment Statistics Released: 04/21 | Notes: The data displayed are presented as estimates only. The most recent month's data are always preliminary and are revised when the next month's data are released.

Consumer Price Index (CPI-U Change), Unadjusted Percent Change to March 2021 from				
CPI Item	Mar-20	Feb-21	Mar-20	Feb-21
	U.S. City		Midwest Region*	
All Items	2.6%	0.7%	3%	0.7%
Food & Beverages	3.4%	0.2%	2.7%	0.1%
Housing	2.1%	0.3%	2.5%	0.5%
Apparel	-2.5%	0.6%	-1.2%	-0.3%
Transportation	5.8%	3.2%	6.9%	3%
Medical Care	1.8%	0.1%	2.3%	-0.1%
Recreation	1.1%	0.4%	1.9%	0.3%
Education & Communication	1.5%	-0.3%	1.6%	0%
Other Goods & Services	2.4%	0.6%	1.3%	1.1%

*Midwest region = Midwest Urban Average. Midwest Region includes Illinois, Indiana, Iowa, Kansas, Michigan, Minnesota, Missouri, Nebraska, North Dakota, Ohio, South Dakota and Wisconsin | Source: U.S. Bureau of Labor Statistics



Source: Indiana Department of Workforce Development, Research and Analysis

WARN Notices

WARN Notices for Region 9 for March 2021				
Company	City	County	# of workers affected	Notice Date

There are no WARN Notices for March 2021 for EGR 9.

Source: Indiana Department of Workforce Development, WARN Notices | For information on WARN Act requirements, you may go to the U.S. Department of Labor Employment Training Administration Fact Sheet:

<https://www.doleta.gov/programs/factsht/warn.htm>

Unemployment Claims: March 2021

Region 9

Initial Claims

03/06/21 - 425(D)

03/13/21 - 529(D)

03/20/21 - 608

03/27/21 - 418(D)

Continued Claims

03/06/21 - 1,820

03/13/21 - 1,132

03/20/21 - 1,604

03/27/21 - 1,587

Total Claims

03/06/21 - 2,245

03/13/21 - 1,661

03/20/21 - 2,212

03/27/21 - 2,005

State of Indiana

Initial Claims

03/06/21 - 9,237

03/13/21 - 13,965

03/20/21 - 13,045

03/27/21 - 9,260

Continued Claims

03/06/21 - 65,352

03/13/21 - 59,186

03/20/21 - 58,181

03/27/21 - 55,558

Total Claims

03/06/21 - 74,589

03/13/21 - 73,151

03/20/21 - 71,226

03/27/21 - 64,818

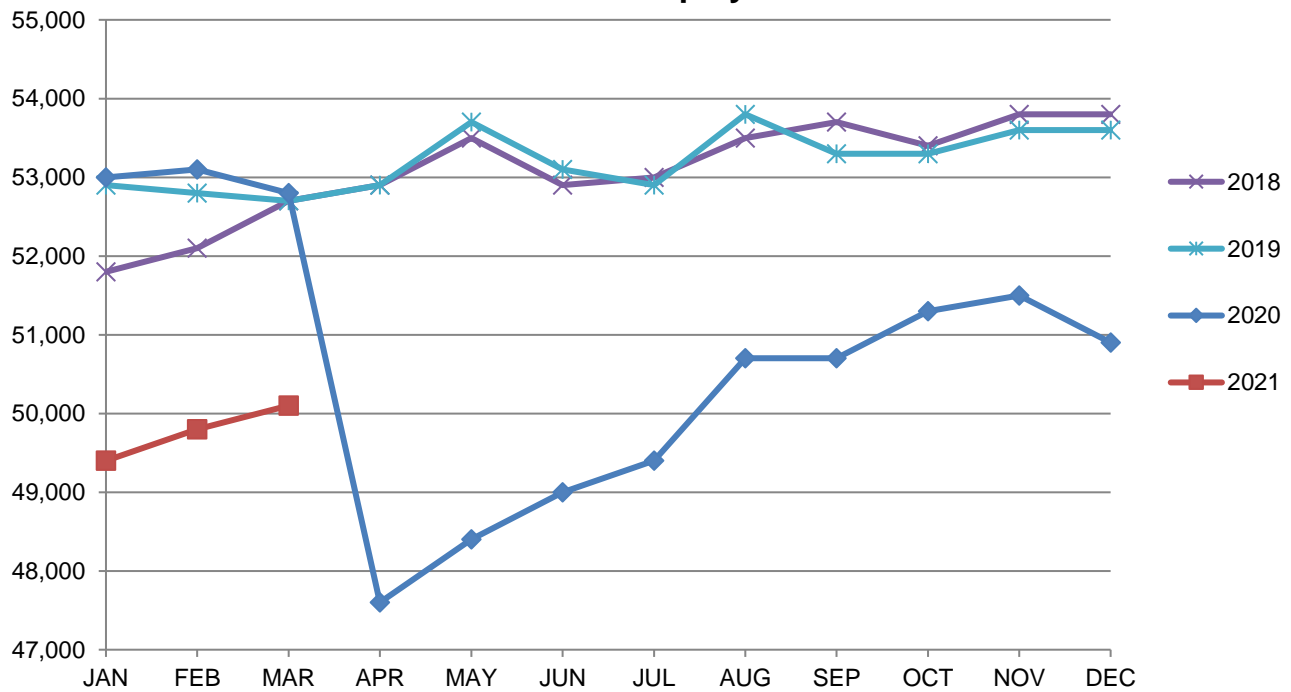
(D) indicates item is affected by non-disclosure issues relating to industry or ownership status |

Source: Indiana Department of Workforce Development, Research and Development

Columbus MSA							
Wage and Salaried Employment	March 2021			# Change	% Change	# Change	% Change
Industry	Mar-21	Feb-21	Mar-20	Feb-21 to Mar-21		Mar-20 to Mar-21	
Total Nonfarm	50,100	49,800	53,000	300	0.6%	-2,900	-5.5%
Total Private	44,200	43,900	46,500	300	0.7%	-2,300	-5.0%
Goods Producing	20,800	20,500	21,800	300	1.5%	-1,000	-4.6%
Service-Providing	29,300	29,300	31,200	0	0.0%	-1,900	-6.1%
Private Service Providing	23,400	23,400	24,700	0	0.0%	-1,300	-5.3%
Mining, Logging and Construction	1,700	1,600	1,800	100	6.3%	-100	-5.6%
Manufacturing	19,100	18,900	20,000	200	1.1%	-900	-4.5%
Durable Goods	16,800	16,800	18,000	0	0.0%	-1,200	-6.7%
Trade, Transportation, and Utilities	7,200	7,200	7,500	0	0.0%	-300	-4.0%
Retail Trade	4,500	4,500	4,800	0	0.0%	-300	-6.3%
Information	300	300	300	0	0.0%	0	0.0%
Financial Activities	1,500	1,500	1,500	0	0.0%	0	0.0%
Professional and Business Services	5,100	5,100	5,400	0	0.0%	-300	-5.6%
Education and Health Services	4,300	4,400	4,400	-100	-2.3%	-100	-2.3%
Leisure and Hospitality	3,600	3,500	4,100	100	2.9%	-500	-12.2%
Other Services	1,400	1,400	1,500	0	0.0%	-100	-6.7%
Total Government	5,900	5,900	6,500	0	0.0%	-600	-9.2%
Federal Government	200	200	200	0	0.0%	0	0.0%
State Government	900	900	1,000	0	0.0%	-100	-10.0%
Local Government	4,800	4,800	5,300	0	0.0%	-500	-9.4%
Local Government Educational Services	1,900	1,900	2,000	0	0.0%	-100	-5.0%

Source: Indiana Dept of Workforce Development, Research and Analysis, Current Employment Statistics

Columbus MSA Employment Trends



Source: Indiana Department of Workforce Development, Research & Analysis, Current Employment Statistics | Note: Historical data for the most recent 4 years (both seasonally adjusted and not seasonally adjusted) are revised near the beginning of each calendar year, prior to the release of January estimates for statewide data.

Frequently Listed Jobs	
Top 20 job listings in Region 9 in the past month	
Rank	Occupations
1	Stock Clerks- Stockroom, Warehouse, or Storage Yard
2	Security Guards
3	Registered Nurses
4	Customer Service Representatives
5	Merchandise Displayers and Window Trimmers
6	Home Health Aides
7	Licensed Practical and Licensed Vocational Nurses
8	Helpers--Production Workers
9	Personal Care Aides
10	Social and Human Service Assistants
11	Nursing Assistants
12	Production Workers, All Other
13	Industrial Engineers
14	Maids and Housekeeping Cleaners
15	Janitors and Cleaners, Except Maids and Housekeeping Cleaners
16	Mechanical Engineers
17	First-Line Supervisors of Production and Operating Workers
18	Maintenance and Repair Workers, General
19	Packers and Packagers, Hand
20	Food Preparation Workers

Source: Indiana Workforce Development, Indiana Career Connect

Applicant Pool	
Top 20 occupations desired by applicants on their resumes in the past 12 months	
Occupations	# of applicants
Production Workers, All Other	2,321
Assemblers and Fabricators, All Other	1,860
Helpers--Production Workers	1,197
Laborers and Freight, Stock, and Material Movers, Hand	726
Cashiers	701
Customer Service Representatives	569
Office Clerks, General	557
Industrial Truck and Tractor Operators	552
Stock Clerks and Order Fillers	483
Managers, All Other	448
Office and Administrative Support Workers, All Other	447
Inspectors, Testers, Sorters, Samplers, and Weighers	441
First-Line Supervisors of Production and Operating Workers	415
Extraction Workers, All Other	396
Electrical and Electronic Equipment Assemblers	392
Packers and Packagers, Hand	378
Welders, Cutters, Solderers, and Brazers	378
Retail Salespersons	361
Nursing Assistants	356
Receptionists and Information Clerks	352

Source: Indiana Workforce Development, Indiana Career Connect

Payroll Employment Increased by 916,000 in March 2021

TED: The Economics Daily

A publication of the Bureau of Labor Statistics: The Economics Daily
April 06, 2021

Total nonfarm payroll employment increased by 916,000 in March 2021. Job growth in March was widespread, with the largest gains occurring in leisure and hospitality and construction. Average weekly earnings for the private sector were \$1,045.60 in March 2021.

Employment and average weekly earnings by industry for all private nonfarm employees, March 2021

Bubble size represents employment level



Click legend items to change data display. Hover over chart to view data.
Source: U.S. Bureau of Labor Statistics.



Employment in leisure and hospitality increased by 280,000 in March 2021, as pandemic-related restrictions eased in many parts of the country; the average weekly earnings in this industry were \$459.42. Construction added 110,000 jobs in March, following job losses in the previous month (-56,000) that were likely weather related; the average weekly earnings in this industry were \$1,273.54.

County Unemployment Rates March 2021



Questions?

Please contact the DWD
Research and Analysis
Regional Labor Analyst
listed below:

Jillian A. Gregory
Regional Workforce Analyst
Research and Analysis

[Indiana Department of
Workforce Development](https://www.in.gov/dwd/)

500 Industrial Drive

Lawrenceburg, IN 47025

812-537-2485

jgregory@dwd.in.gov

