



HOOSIERS BY THE NUMBERS

Your premier source for labor market information for Indiana.

DWD

INDIANA DEPARTMENT OF
WORKFORCE
DEVELOPMENT

LABOR MARKET REVIEW



April 2026 Labor Market Review

Reported by: Cassie Janes

Regional Workforce Analyst

[Email Cassie](#)

cjanes@dwd.in.gov

DWD

INDIANA DEPARTMENT OF
WORKFORCE
DEVELOPMENT

Economic Growth Region 8

Statistical Data Report for April 2026, Released June 2026

State Employment and Unemployment

Unemployment rates were lower in April in 3 states, higher in 2 states, and stable in 45 states and the District of Columbia, the U.S. Bureau of Labor Statistics reported. Nineteen states had jobless rate increases from a year 25 states and the District had little change. The national unemployment rate, 4.3 percent, was unchanged over the month and was little changed from April 2025.

In April 2026, nonfarm payroll employment increased in 6 states and was essentially unchanged in 44 states and the District of Columbia. Over the year, nonfarm payroll employment decreased in 1 state and the District, increased in 1 state, and was essentially unchanged in 48 states.

South Dakota had the lowest jobless rate in April, 2.2 percent, followed by North Dakota, 2.4 percent. The District of Columbia had the highest unemployment rate, 6.2 percent. The next highest rates were in California, Delaware, and Nevada, 5.3 percent each. In total, 17 states had unemployment rates lower than the U.S. figure of 4.3 percent, 6 states and the District had higher rates, and 27 states had rates that were not appreciably different from that of the nation.



Economic Growth Region (EGR) 8

Brown, Daviess, Greene, Lawrence, Martin, Monroe, Orange and Owen Counties

Unemployment Rates by State (seasonally adjusted): April 2026

- U.S. - 4.3%**
- Illinois - 5.1%
- Indiana - 3.2%**
- Kentucky - 4.3%
- Michigan - 5%
- Ohio - 3.9%

Source: U.S. Department of Labor, Bureau of Labor Statistics

Unemployment Rank by County (of 92 counties): April 2026

- #32 - Greene (2.6%)
- #35 - Lawrence (2.6%)
- #38 - Owen (2.6%)
- #45 - Brown (2.5%)
- #50 - Orange (2.5%)
- #60 - Monroe (2.4%)
- #74 - Martin (2.3%)
- #86 - Daviess (2.1%)

Source: Indiana Department of Workforce Development, Research and Development, Local Area Unemployment Statistics

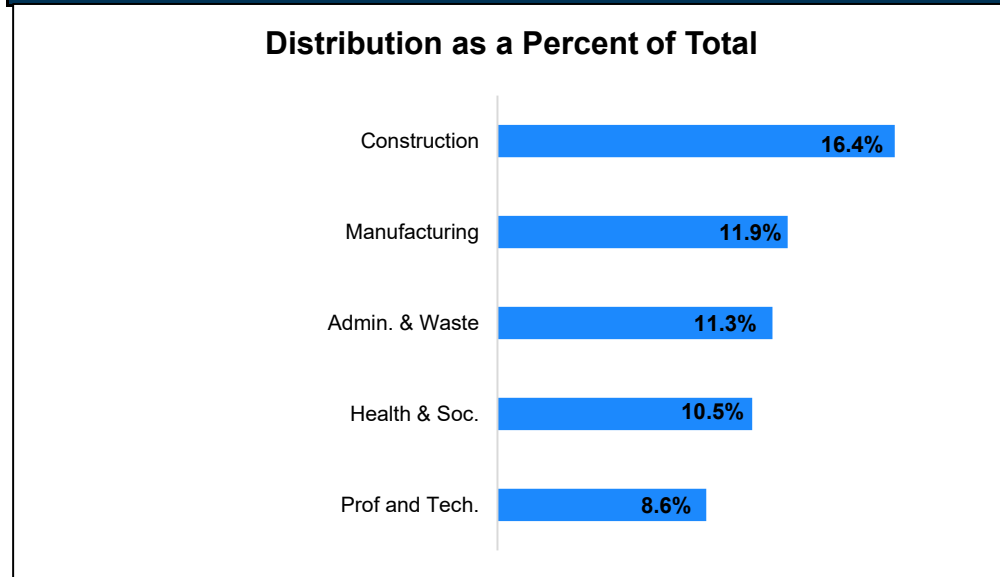
April 2026 Labor Force Estimates (not seasonally adjusted)						
Area	Labor Force	Employed	Unemployed	Apr-26	Mar-26	Apr-25
U.S.	169,548,000	162,781,000	6,768,000	4.0%	4.3%	3.9%
IN	3,467,580	3,372,212	95,368	2.8%	3.6%	3.3%
EGR 8	161,575	157,609	3,966	2.5%	3.3%	2.8%
Bloomington MSA	86,172	84,063	2,109	2.4%	3.3%	2.7%
Brown Co.	7,782	7,587	195	2.5%	3.4%	2.9%
Daviess Co.	16,386	16,039	347	2.1%	3.0%	2.3%
Greene Co.	14,574	14,193	381	2.6%	3.5%	3.2%
Lawrence Co.	22,187	21,606	581	2.6%	3.4%	3.1%
Martin Co.	5,024	4,906	118	2.3%	3.1%	2.5%
Monroe Co.	75,396	73,566	1,830	2.4%	3.3%	2.6%
Orange Co.	9,450	9,215	235	2.5%	3.4%	3.3%
Owen Co.	10,776	10,497	279	2.6%	3.3%	3.3%
Bloomington	42,493	41,428	1,065	2.5%	3.6%	2.6%

Source: Indiana Department of Workforce Development, Research & Analysis, Local Area Unemployment Statistics | Unemployment Statistics Released: 06/26 | Notes: The data displayed are presented as estimates only. The most recent month's data are always preliminary and are revised when the next month's data are released.

Consumer Price Index (CPI-U Change), Unadjusted Percent Change to April 2026 from				
CPI Item	Apr-25	Mar-26	Apr-25	Mar-26
	U.S. City		Midwest Region*	
All Items	3.8%	0.9%	4.1%	0.8%
Food & Beverages	3.1%	0.5%	3.1%	0.5%
Housing	3.6%	0.6%	4.7%	0.8%
Apparel	4.2%	-0.4%	5.4%	-0.8%
Transportation	7.1%	2.9%	5.8%	2.7%
Medical Care	2.5%	-0.1%	3.4%	-0.3%
Recreation	2.3%	0.0%	4.2%	0.0%
Education & Communication	0.2%	-0.1%	0.1%	0.2%
Other Goods & Services	4.4%	0.9%	0.5%	-1.0%

*Midwest region = Midwest Urban Average. Midwest Region includes Illinois, Indiana, Iowa, Kansas, Michigan, Minnesota, Missouri, Nebraska, North Dakota, Ohio, South Dakota and Wisconsin | Source: U.S. Bureau of Labor Statistics

Percentage of Unemployment Claims for Top 5 Region 8 Industries April 2026



Source: Indiana Department of Workforce Development, Research and Analysis

WARN Notices

WARN Notices for Region 8 for April 2026				
Company	City	County	# of workers affected	Notice Date

There are no WARN Notices for April 2026 for EGR 8.

Source: Indiana Department of Workforce Development, WARN Notices | For information on WARN Act requirements, you may go to the U.S. Department of Labor Employment Training Administration Fact Sheet: <https://www.doleta.gov/programs/factsht/warn.htm>

Unemployment Claims: April 2026

Region 8

Initial Claims

04/04/26 - 34(D)
04/11/26 - 50(D)
04/18/26 - 48(D)
04/25/26 - 45(D)

Continued Claims

04/04/26 - 564
04/11/26 - 528
04/18/26 - 515
04/25/26 - 493

Total Claims

04/04/26 - 598
04/11/26 - 578
04/18/26 - 563
04/25/26 - 538

State of Indiana

Initial Claims

04/04/26 - 2,727
04/11/26 - 3,629
04/18/26 - 2,479
04/25/26 - 2,138

Continued Claims

04/04/26 - 20,966
04/11/26 - 21,000
04/18/26 - 20,087
04/25/26 - 19,380

Total Claims

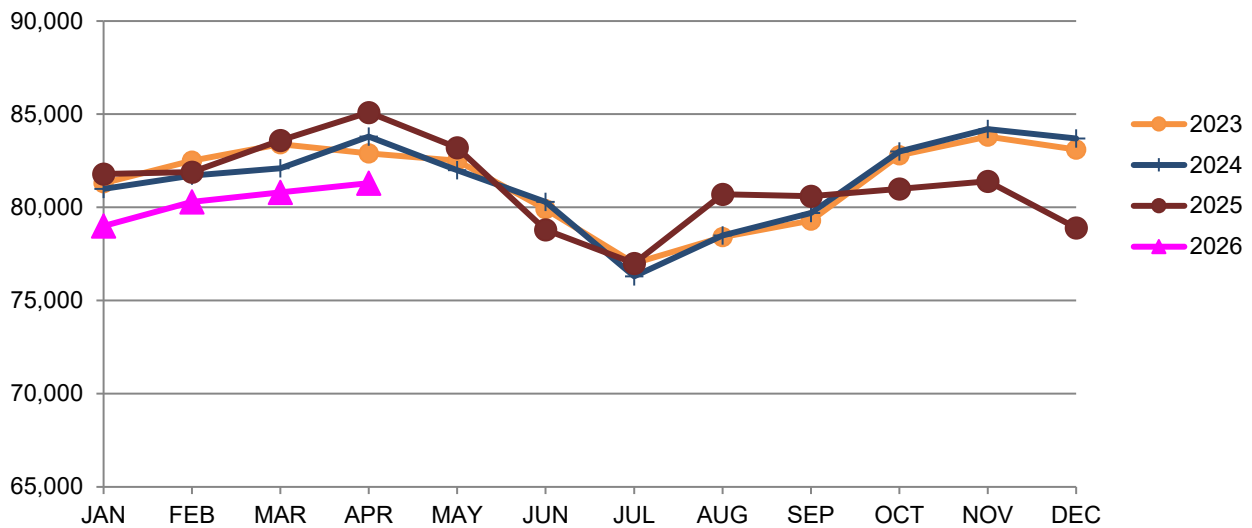
04/04/26 - 23,693
04/11/26 - 24,629
04/18/26 - 22,566
04/25/26 - 21,518

(D) indicates item is affected by non-disclosure issues relating to industry or ownership status | *Numbers subject to weekly revision Source: Indiana Department of Workforce Development, Research and Development

Bloomington MSA							
Wage and Salaried Employment	April 2026			# Change	% Change	# Change	% Change
Industry	Apr-26	Mar-26	Apr-25	Mar-26 to Apr-26	Apr-25 to Apr-26	Apr-25 to Apr-26	Apr-25 to Apr-26
Total Nonfarm	81,300	80,800	85,100	500	0.6%	-3,800	-4.5%
Total Private	57,700	57,300	57,600	400	0.7%	100	0.2%
Goods Producing	14,200	14,200	13,600	0	0.0%	600	4.4%
Service-Providing	67,100	66,600	71,500	500	0.8%	-4,400	-6.2%
Private Service Providing	43,500	43,100	44,000	400	0.9%	-500	-1.1%
Mining, Logging and Construction	3,700	3,700	3,300	0	0.0%	400	12.1%
Manufacturing	10,500	10,500	10,300	0	0.0%	200	1.9%
Durable Goods	5,800	5,800	5,900	0	0.0%	-100	-1.7%
Trade, Transportation, and Utilities	9,800	9,800	10,000	0	0.0%	-200	-2.0%
Wholesale Trade	2,100	2,100	2,200	0	0.0%	-100	-4.6%
Retail Trade	6,600	6,600	6,600	0	0.0%	0	0.0%
Transportation, Warehousing, and Utilities	1,100	1,100	1,200	0	0.0%	-100	-8.3%
Information	800	800	800	0	0.0%	0	0.0%
Financial Activities	2,800	2,800	2,800	0	0.0%	0	0.0%
Professional and Business Services	5,800	5,700	5,900	100	1.8%	-100	-1.7%
Education and Health Services	12,300	12,200	12,500	100	0.8%	-200	-1.6%
Leisure and Hospitality	9,400	9,200	9,300	200	2.2%	100	1.1%
Other Services	2,600	2,600	2,700	0	0.0%	-100	-3.7%
Total Government	23,600	23,500	27,500	100	0.4%	-3,900	-14.2%
Federal Government	300	300	400	0	0.0%	-100	-25.0%
State Government	17,900	17,900	21,500	0	0.0%	-3,600	-16.7%
Local Government	5,400	5,300	5,600	100	1.9%	-200	-3.6%
Local Government Educational Services	2,600	2,600	2,800	0	0.0%	-200	-7.1%
Local Government excluding Educational Services	2,800	2,700	2,800	100	3.7%	0	0.0%

Source: Indiana Dept of Workforce Development, Research and Analysis, Current Employment Statistics

Bloomington MSA Employment Trends



Source: Indiana Department of Workforce Development, Research & Analysis, Current Employment Statistics | Note: Historical data for the most recent 4 years (both seasonally adjusted and not seasonally adjusted) are revised near the beginning of each calendar year, prior to the release of January estimates for statewide data.

Frequently Listed Jobs	
Top 20 job listings by number of postings in Region 8 in the past month	
Rank	Occupations
1	Registered Nurses
2	Driver/Sales Workers and Truck Drivers
3	Retail Salespersons
4	First-Line Supervisors of Sales Workers
5	Physicians
6	Home Health and Personal Care Aides
7	Laborers and Material Movers
8	Therapists
9	Building Cleaning Workers
10	Postsecondary Teachers
11	Diagnostic Related Technologists and Technicians
12	Customer Service Representatives
13	Medical and Health Services Managers
14	Licensed Practical and Licensed Vocational Nurses
15	Counselors
16	Sales Representatives, Wholesale and Manufacturing
17	Health Practitioner Support Technologists and Technicians
18	Electrical and Electronics Engineers
19	Food Preparation Workers
20	Designers

Source: Lightcast

Applicant Pool	
Top 20 occupations desired by applicants on their resumes in the past 12 months	
Occupations	# of applicants
Assemblers and Fabricators, All Other	98
Production Workers, All Other	96
Heavy and Tractor-Trailer Truck Drivers	90
Office Clerks, General	73
Cashiers	67
Laborers and Freight, Stock, and Material Movers, Hand	66
Helpers--Production Workers	58
Customer Service Representatives	53
Office and Administrative Support Workers, All Other	45
Managers, All Other	44
Construction Laborers	43
Welders, Cutters, Solderers, and Brazers	42
Retail Salespersons	37
Executive Secretaries and Executive Administrative Assistants	36
Medical Assistants	33
Janitors and Cleaners, Except Maids and Housekeeping Cleaners	32
Operating Engineers and Other Construction Equipment Operators	32
Team Assemblers	30
Waiters and Waitresses	29
General and Operations Managers	28

Source: Indiana Workforce Development, Indiana Career Connect.

BREAKDOWN

April Indiana Labor Force

Released May 22, 2026



Total Population

6,973,333



Labor Force (Age 16+)
3,487,162



Not in the Labor Force (Age 16+)
1,983,200

Employed
3,373,886

Source: Local Area Unemployment Statistics, April 2026, Bureau of Labor Statistics

Unemployed (Seeking)
113,276

Do Not Want a Job
1,858,700

Source: Local Area Unemployment Statistics, April 2026, Bureau of Labor Statistics

Want a Job (Not Seeking)
124,400

Want a Job (Available to Work Now)
44,200

Potential Workers

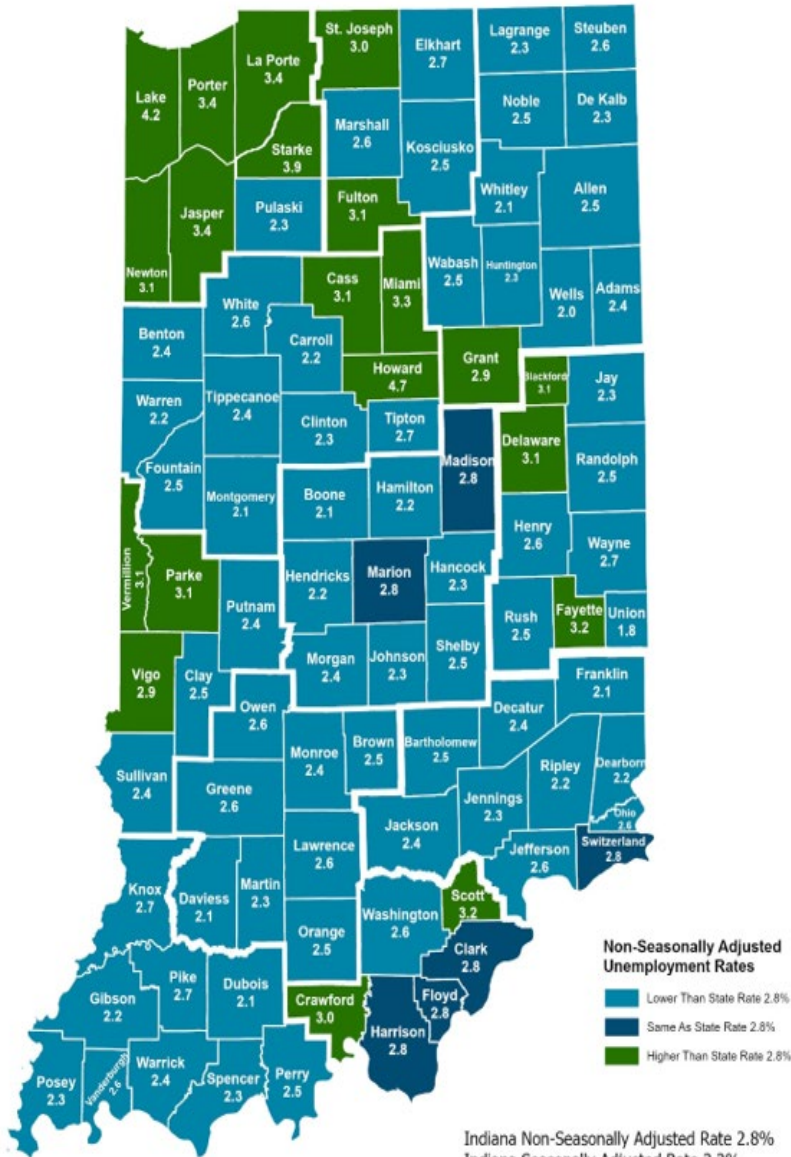
(Unemployed and Seeking a Job + Not in the Labor Force but Want a Job/Available to Work Now)

157,476

More about the US Bureau of Labor Statistics data sources used within:
Local Area Unemployment Statistics (LAUS): Captures Indiana's labor force, which includes those currently employed and those who are unemployed and actively seeking work.
Current Population Survey (CPS): Captures individuals not participating in Indiana's Labor Force. This set includes non-participants that do not want a job (i.e. retirees and students) and those that want a job but are not actively seeking work.
U.S. Census Bureau, Indiana Population 2025

Resource: Notes on Using Current Population Survey (CPS) Subnational Data and Differences Between CPS and LAUS Estimates

County Unemployment Rates April 2026



Indiana Non-Seasonally Adjusted Rate 2.8%
 Indiana Seasonally Adjusted Rate 3.2%
 Source: DWD, Local Area Unemployment Statistics



INDIANA DEPARTMENT OF
WORKFORCE
 DEVELOPMENT

Questions?

Please contact the DWD
 Regional Workforce
 Analyst listed below:

Cassie Janes

Research and Analysis

[Indiana Department of
 Workforce Development](https://www.in.gov/dwd/)

cjanes@dwd.in.gov