



November 2025 Labor Market Review

Reported by: Cassie Janes

Regional Workforce Analyst
[Email Cassie](#)
cjanes@dwd.in.gov

Economic Growth Region 8

Statistical Data Report for November 2025, Released January 2026

State Employment and Unemployment

BLS could not collect October 2025 reference period survey data for some surveys due to a lapse in appropriations, resulting in missing data values where data could not be retroactively collected.

Unemployment rates were higher in November than a year earlier in 16 states and the District of Columbia, lower in 8 states, and little different in 26 states, the U.S. Bureau of Labor Statistics reported. October 2025 data from the household survey were not collected due to the lapse in federal appropriations; therefore, the unemployment analysis in this news release includes over-the-year changes only. The national unemployment rate, 4.6 percent, was 0.4 percentage point higher than in November 2024.

In November 2025, nonfarm payroll employment was essentially unchanged in all 50 states and the District of Columbia. Over the year, nonfarm payroll employment increased in 12 states, decreased in the District, and was essentially unchanged in 38 states.



Economic Growth Region (EGR) 8

Brown, Daviess, Greene, Lawrence, Martin, Monroe, Orange and Owen Counties

Unemployment Rates by State (seasonally adjusted): November 2025

U.S. - 4.5%

Illinois - 4.4%

Indiana - 3.7%

Kentucky - 5%

Michigan - 5%

Ohio - 4.5%

Source: U.S. Department of Labor, Bureau of Labor Statistics

Unemployment Rank by County (of 92 counties): November 2025

#25 - Greene (3.4%)

#32 - Lawrence (3.3%)

#36 - Orange (3.3%)

#45 - Owen (3.2%)

#64 - Brown (3%)

#68 - Martin (3%)

#78 - Monroe (2.9%)

#80 - Daviess (2.8%)

Source: Indiana Department of Workforce Development, Research and Development, Local Area Unemployment Statistics

November 2025 Labor Force Estimates (not seasonally adjusted)						
Area	Labor Force	Employed	Unemployed	Nov-25	Oct-25	Nov-24
U.S.	171,467,000	164,066,000	7,401,000	4.3%	0.0%	4.0%
IN	3,477,160	3,363,465	113,695	3.3%	0.0%	4.3%
EGR 8	162,712	157,744	4,968	3.1%	0.0%	3.9%
Bloomington MSA	87,129	84,564	2,565	2.9%	0.0%	3.8%
Brown Co.	7,933	7,693	240	3.0%	0.0%	4.0%
Daviess Co.	16,374	15,921	453	2.8%	0.0%	3.4%
Greene Co.	14,626	14,122	504	3.4%	0.0%	4.6%
Lawrence Co.	22,333	21,585	748	3.3%	0.0%	4.6%
Martin Co.	5,082	4,931	151	3.0%	0.0%	3.3%
Monroe Co.	76,292	74,078	2,214	2.9%	0.0%	3.7%
Orange Co.	9,235	8,928	307	3.3%	0.0%	4.2%
Owen Co.	10,837	10,486	351	3.2%	0.0%	4.2%
Bloomington	42,772	41,519	1,253	2.9%	0.0%	3.9%

Source: Indiana Department of Workforce Development, Research & Analysis, Local Area Unemployment Statistics | Unemployment Statistics Released: 12/25 | Notes: The data displayed are presented as estimates only. The most recent month's data are always preliminary and are revised when the next month's data are released.

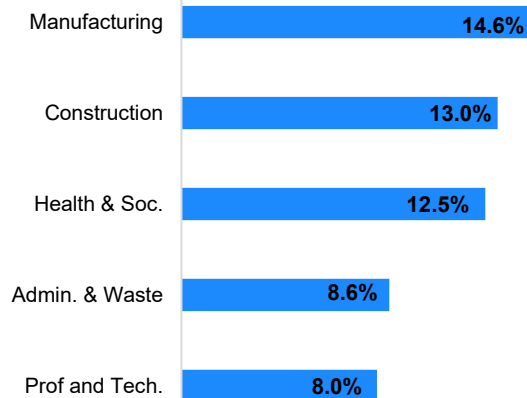
Consumer Price Index (CPI-U Change), Unadjusted Percent Change to November 2025 from

CPI Item	Nov-24	Oct-25	Nov-24	Oct-25
	U.S. City		Midwest Region*	
All Items	2.7%	0.0%	3.0%	0.0%
Food & Beverages	2.6%	0.0%	2.2%	0.0%
Housing	3.5%	0.0%	4.6%	0.0%
Apparel	0.2%	0.0%	0.5%	0.0%
Transportation	1.6%	0.0%	0.5%	0.0%
Medical Care	2.9%	0.0%	2.6%	0.0%
Recreation	1.8%	0.0%	3.5%	0.0%
Education & Communication	1.5%	0.0%	1.8%	0.0%
Other Goods & Services	3.9%	0.0%	3.2%	0.0%

*Midwest region = Midwest Urban Average. Midwest Region includes Illinois, Indiana, Iowa, Kansas, Michigan, Minnesota, Missouri, Nebraska, North Dakota, Ohio, South Dakota and Wisconsin | Source: U.S. Bureau of Labor Statistics

Percentage of Unemployment Claims for Top 5 Region 8 Industries November 2025

Distribution as a Percent of Total



Source: Indiana Department of Workforce Development, Research and Analysis

WARN Notices

WARN Notices for Region 8 for November 2025

Company	City	County	# of workers affected	Notice Date

There are no WARN Notices for November 2025 for EGR 8.

Source: Indiana Department of Workforce Development, WARN Notices | For information on WARN Act requirements, you may go to the U.S. Department of Labor Employment Training Administration Fact Sheet:

<https://www.doleta.gov/programs/factsht/warn.htm>

Unemployment Claims: November 2025

Region 8

Initial Claims

11/01/25 - 54(D)

11/08/25 - 62(D)

11/15/25 - 92(D)

11/22/25 - 74(D)

11/29/25 - 47(D)

Continued Claims

11/01/25 - 579

11/08/25 - 571

11/15/25 - 597

11/22/25 - 621

11/29/25 - 638

Total Claims

11/01/25 - 633

11/08/25 - 633

11/15/25 - 689

11/22/25 - 695

11/29/25 - 685

State of Indiana

Initial Claims

11/01/25 - 3,310

11/08/25 - 2,899

11/15/25 - 2,595

11/22/25 - 2,758

11/29/25 - 2,239

Continued Claims

11/01/25 - 19,775

11/08/25 - 18,769

11/15/25 - 19,240

11/22/25 - 18,892

11/29/25 - 21,914

Total Claims

11/01/25 - 23,085

11/08/25 - 21,668

11/15/25 - 21,835

11/22/25 - 21,650

11/29/25 - 24,153

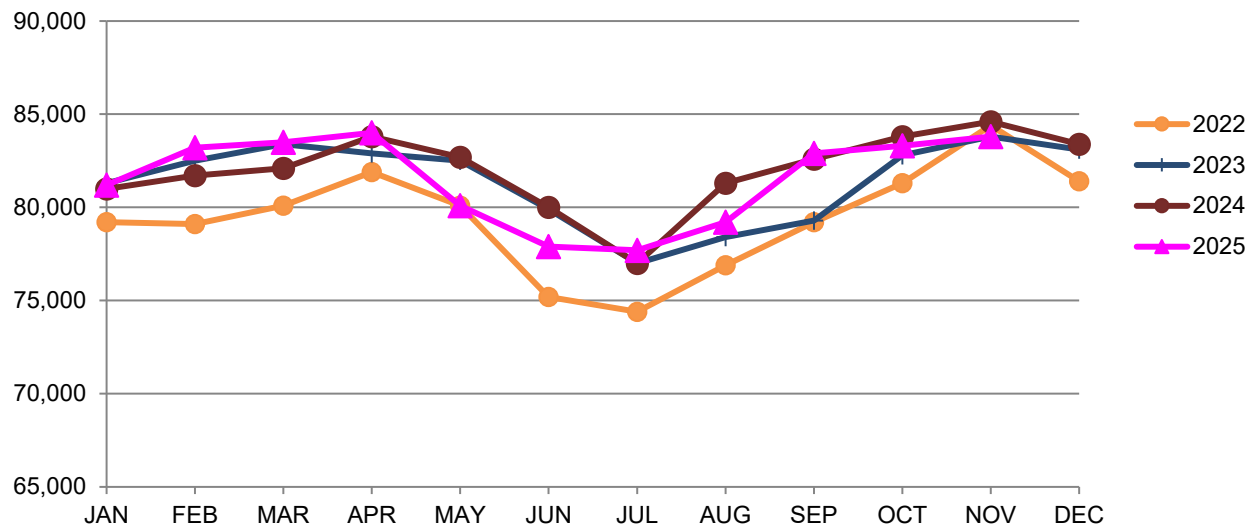
(D) indicates item is affected by non-disclosure issues relating to industry or ownership status |

*Numbers subject to weekly revision Source: Indiana Department of Workforce Development, Research and Development

Bloomington MSA							
Wage and Salaried Employment	November 2025			# Change	% Change	# Change	% Change
Industry	Nov-25	Oct-25	Nov-24	Oct-25 to Nov-25	Nov-24 to Nov-25		
Total Nonfarm	83,800	83,300	84,600	500	0.6%	-800	-1.0%
Total Private	58,400	58,200	58,200	200	0.3%	200	0.3%
Goods Producing	13,700	13,800	13,800	-100	-0.7%	-100	-0.7%
Service-Providing	70,100	69,500	70,800	600	0.9%	-700	-1.0%
Private Service Providing	44,700	44,400	44,400	300	0.7%	300	0.7%
Mining, Logging and Construction	3,400	3,500	3,300	-100	-2.9%	100	3.0%
Manufacturing	10,300	10,300	10,500	0	0.0%	-200	-1.9%
Durable Goods	5,900	5,900	6,000	0	0.0%	-100	-1.7%
Trade, Transportation, and Utilities	10,600	10,400	10,700	200	1.9%	-100	-0.9%
Wholesale Trade	2,300	2,300	2,300	0	0.0%	0	0.0%
Retail Trade	7,000	6,800	7,000	200	2.9%	0	0.0%
Transportation, Warehousing, and Utilities	1,300	1,300	1,400	0	0.0%	-100	-7.1%
Information	800	800	800	0	0.0%	0	0.0%
Financial Activities	2,600	2,600	2,700	0	0.0%	-100	-3.7%
Professional and Business Services	6,200	6,200	5,900	0	0.0%	300	5.1%
Education and Health Services	12,800	12,800	12,500	0	0.0%	300	2.4%
Leisure and Hospitality	9,100	9,000	9,200	100	1.1%	-100	-1.1%
Other Services	2,600	2,600	2,600	0	0.0%	0	0.0%
Total Government	25,400	25,100	26,400	300	1.2%	-1,000	-3.8%
Federal Government	300	300	400	0	0.0%	-100	-25.0%
State Government	19,700	19,400	20,200	300	1.6%	-500	-2.5%
Local Government	5,400	5,400	5,800	0	0.0%	-400	-6.9%
Local Government Educational Services	2,600	2,600	2,900	0	0.0%	-300	-10.3%
Local Government excluding Educational Services	2,800	2,800	2,900	0	0.0%	-100	-3.5%

Source: Indiana Dept of Workforce Development, Research and Analysis, Current Employment Statistics

Bloomington MSA Employment Trends



Source: Indiana Department of Workforce Development, Research & Analysis, Current Employment Statistics | Note: Historical data for the most recent 4 years (both seasonally adjusted and not seasonally adjusted) are revised near the beginning of each calendar year, prior to the release of January estimates for statewide data.

Frequently Listed Jobs	
Top 20 job listings by number of postings in Region 8 in the past month	
Rank	Occupations
1	Registered Nurses
2	Home Health and Personal Care Aides
3	Retail Salespersons
4	Heavy and Tractor-Trailer Truck Drivers
5	First-Line Supervisors of Retail Sales Workers
6	Postsecondary Teachers
7	Medical and Health Services Managers
8	Food Service Managers
9	Food Preparation Workers
10	Customer Service Representatives
11	Licensed Practical and Licensed Vocational Nurses
12	Maintenance and Repair Workers, General
13	Nursing Assistants
14	Fast Food and Counter Workers
15	Sales Representatives, Wholesale and Manufacturing, Except Technical and Scientific Products
16	Janitors and Cleaners, Except Maids and Housekeeping Cleaners
17	Driver/Sales Workers
18	Physical Therapists
19	Stockers and Order Fillers
20	First-Line Supervisors of Food Preparation and Serving Workers

Source: Lightcast

Applicant Pool	
Top 20 occupations desired by applicants on their resumes in the past 12 months	
Occupations	# of applicants
Production Workers, All Other	200
Assemblers and Fabricators, All Other	183
Heavy and Tractor-Trailer Truck Drivers	166
Helpers--Production Workers	134
Laborers and Freight, Stock, and Material Movers, Hand	123
Cashiers	114
Construction Laborers	114
Office Clerks, General	107
Office and Administrative Support Workers, All Other	83
Customer Service Representatives	80
Extraction Workers, All Other	78
Welders, Cutters, Solderers, and Brazers	78
Construction and Related Workers, All Other	77
Operating Engineers and Other Construction Equipment Operators	77
Carpenters	67
Managers, All Other	65
Waiters and Waitresses	62
Landscaping and Groundskeeping Workers	61
Industrial Truck and Tractor Operators	60
Retail Salespersons	57

Source: Indiana Workforce Development, Indiana Career Connect

GARY, Ind. - The city of Gary has formally tossed its hat into the ring as a possible home for the Chicago Bears, pitching several sites across the city as possible locations for a new stadium and mixed-use development.

City officials announced Friday that three sites, ranging from 145 to 760 acres, have been put forth in an effort to woo the team, which nearly one month ago announced it would consider sites in northwest Indiana for a stadium amid an impasse with Illinois state leaders involving sites in Chicago and its suburb, Arlington Heights.

Mayor Eddie Melton said the proposal gives the Bears the tax certainty and stability the team said is key to success. In an interview with Inside Indiana Business host Gerry Dick, the mayor said he had a very positive conversation with the team prior to publicly presenting the proposal.

"I think we made a lot of noise [Friday] by rolling this out," he said. "I did get a phone call from the organization, and I don't want to go into any details, but it was very, very positive in tone and next steps."

Gary is about 30 miles southwest of Chicago and each of the three sites put forth by Gary—detailed on a website called BearStadiumDistrict.com and in a 20-page proposal—are considered "plug-and-play" by city officials, meaning they're generally ready for intensive commercial development. The three sites proposed are:

- A 400-acre site fronting Interstates 80 and 94, adjacent to the Hard Rock Casino Northern Indiana, in an area that has been dubbed the Gary West End Entertainment District;
- a 145-acre site called Buffington Harbor near Cline Avenue, which resides in an Opportunity Zone and the city's lakefront tax-increment financing district with space allowing for a marina development;
- and a 760-acre site called Miller Beach along the Lake Michigan shoreline, with access to multiple interstates and adjacent to the Indiana Dunes National Park.

Melton said his team is making a strong push for the site near the casino.

"[We have] the Hard Rock Casino, the number one casino in the state of Indiana and probably in the Midwest. [There's] also the new convention center that we're getting ready to build, in addition to the three new hotels that's going to be coming online," Melton said. "So, we knew that the Bears organization was looking to establish entertainment district. Well, we're halfway there."

Friday's announcement comes one day after Indiana lawmakers proposed a framework for the development of a new stadium governing body and financing mechanism.

Senate Bill 27 would create a Northwest Indiana Stadium Authority authorized to acquire land, finance capital improvements and enter into leases with private entities—including NFL teams. Gary officials said each of the sites would be able to accommodate the language presented in the bill SB 27, authored by Sen. Ryan Mishler, R-Mishawaka, and Sen. Chris Garten, R-Charlestown, marks the Indiana Legislature's first formal overture to the Bears organization after public comments from lawmakers, local officials in Hammond and Gary and Gov. Mike Braun indicating an appetite for bringing a second professional football franchise to the state.

Melton, a former state senator, said he has an established relationship with the Indiana Legislature and the governor's office that can help bring the project to fruition.

"I truly believe that this makes good business sense for the McCaskey family and the other minority shareholders at the end of the day," he said. "I want to reassure the fans, as a lifelong Bears fan, that if this organization is able to make a sound business decision, it will benefit the entire organization and the fans to build on their current winning team, to make the investments that they need to continue to build a dynasty."

For nearly a month, the team has publicly expressed an interest in leaving Illinois if it can't work out at a deal in Arlington Heights, where it has acquired property, and has sent representatives to tour potential stadium sites in northwest Indiana.

On Friday, Arlington Heights officials made a plea to Illinois lawmakers to pass legislation that would make it easier for the Chicago suburb to strike a deal with the Bears.

Melton said he agrees with Indiana lawmakers who have expressed a sense of urgency in working lure the team to the Hoosier State.

"The state of Illinois is very concerned," he said. "A lot of elected officials have reached out, and they're trying to figure out, what can they do now to entice and keep the Bears there? So, I think time is of the essence. This is a priority to the organization."

Earlier this week, Indianapolis law firm Taft Stettinius & Hollister LLP registered as a lobbyist in Indiana for a Bears-affiliated holding company, allowing the team's interests to be represented at the Statehouse.

"The media has asked if Gary is serious. Our answer is in the legislation and on the map," Gary Common Council President Linda Barnes-Caldwell said in a written statement. "We are not just offering land; we are offering a partner who moves at the speed of business. With the backing of the Statehouse and the specific tools provided by Senate Bill 27, we are ready to break ground while others are still breaking promises."

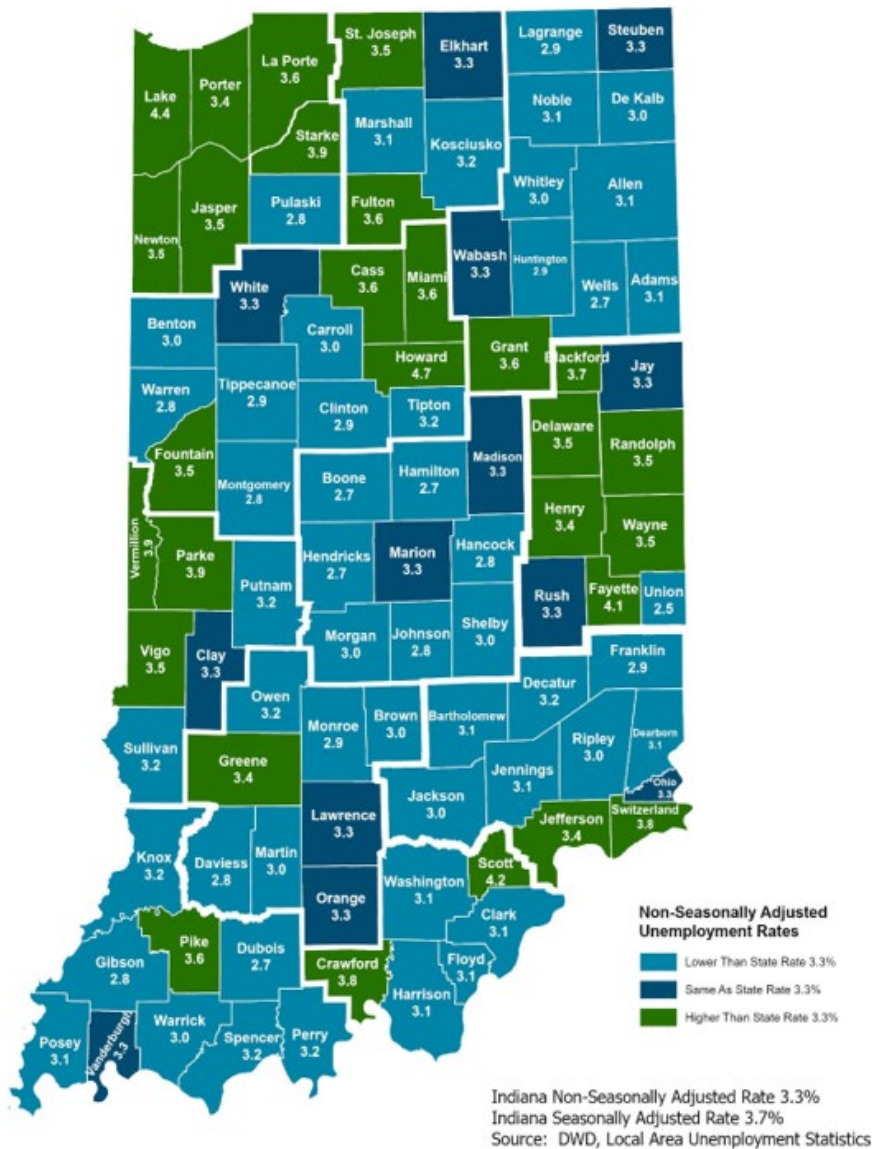
Editor's note: This story has been updated to add comments Gary Mayor Eddie Melton made to Inside INdiana Business host Gerry Dick.

Friday, January 16, 2026 03:39 PM EDT

Updated: Sunday, January 18, 2026 03:13 PM EDT

By Mickey Shuey, Indianapolis Business Journal

County Unemployment Rates November 2025



INDIANA DEPARTMENT OF
WORKFORCE
DEVELOPMENT

Questions?

Please contact the DWD
Regional Workforce
Analyst listed below:

Cassie Janes

[Indiana Department of
Workforce Development](https://www.in.gov/dwd/)

cjanes@dwd.in.gov