



January 2023 Labor Market Review

Reported by: Cassie Janes

Regional Workforce Analyst
[Email Cassie](#)
cjanes@dwd.in.gov

Tel: 765.507.9710

Economic Growth Region 8

Statistical Data Report for January 2023, Released March 2023

State Employment and Unemployment

Unemployment rates were lower in January in 5 states, higher in 2 states and the District of Columbia, and stable in 43 states, the U.S. Bureau of Labor Statistics reported. Fifteen states and the District had jobless rate decreases from a year earlier, 11 states had increases, and 24 states had little change. The national unemployment rate, 3.4 percent, was little changed over the month, but was 0.6 percentage point lower than in January 2022.

Nonfarm payroll employment increased in 20 states and was essentially unchanged in 30 states and the District of Columbia in January 2023. Over the year, nonfarm payroll employment increased in 47 states and was essentially unchanged in 3 states and the District.

Unemployment

North Dakota and South Dakota had the lowest jobless rates in January, 2.1 percent each. The next lowest rates were in Utah, 2.4 percent, and Montana and Nebraska, 2.5 percent each. Nevada had the highest unemployment rate, 5.5 percent. In total, 13 states had unemployment rates lower than the U.S. figure of 3.4 percent, 11 states and the District of Columbia had higher rates, and 26 states had rates that were not appreciably different from that of the nation.



Economic Growth Region (EGR) 8

Brown, Daviess, Greene, Lawrence, Martin, Monroe, Orange and Owen Counties

Unemployment Rates by State (seasonally adjusted): January 2023

U.S. - 3.6%

Illinois - 4.5%

Indiana - 3.1%

Kentucky - 3.9%

Michigan - 4.3%

Ohio - 4%

Source: U.S. Department of Labor, Bureau of Labor Statistics

Unemployment Rank by County (of 92 counties): January 2023

#14 - Greene (4.1%)

#17 - Lawrence (3.9%)

#25 - Brown (3.7%)

#28 - Owen (3.7%)

#32 - Orange (3.6%)

#60 - Monroe (3%)

#76 - Martin (2.8%)

#89 - Daviess (2.4%)

Source: Indiana Department of Workforce Development, Research and Development, Local Area Unemployment Statistics

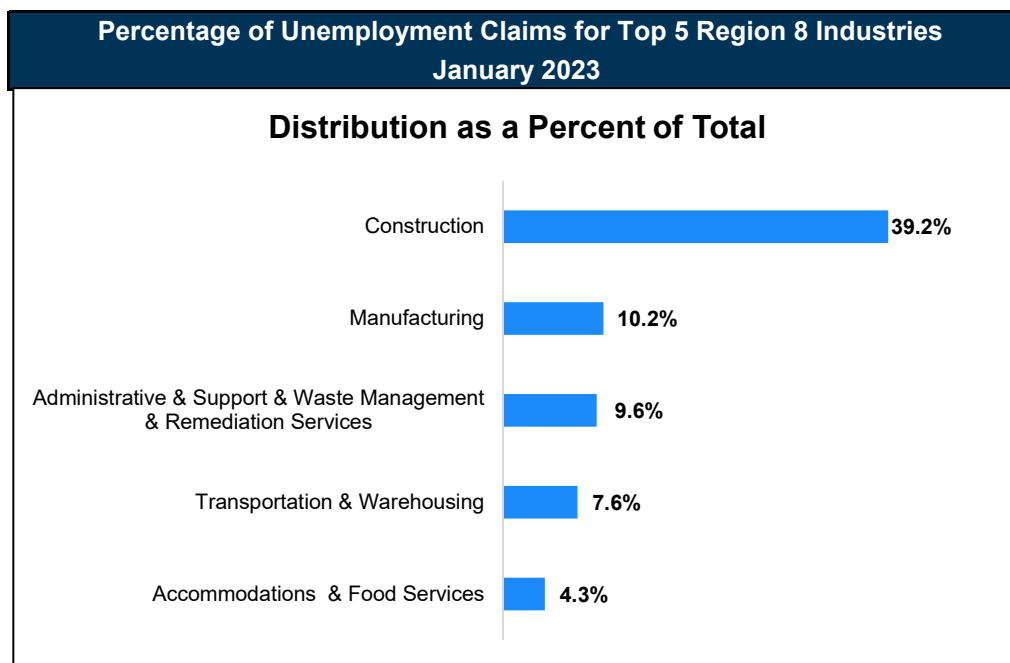
Labor Market Review EGR 8

January 2023 Labor Force Estimates (not seasonally adjusted)						
Area	Labor Force	Employed	Unemployed	Jan-23	Dec-22	Jan-22
U.S.	165,070,000	158,692,000	6,378,000	3.9%	3.3%	4.4%
IN	3,395,175	3,281,436	113,739	3.4%	2.6%	3.3%
EGR 8	153,717	148,710	5,007	3.3%	2.4%	3.2%
Bloomington MSA	81,223	78,720	2,503	3.1%	2.2%	2.9%
Brown Co.	7,918	7,624	294	3.7%	2.9%	3.4%
Daviess Co.	16,632	16,230	402	2.4%	1.7%	2.6%
Greene Co.	13,630	13,073	557	4.1%	3.3%	4.2%
Lawrence Co.	20,438	19,641	797	3.9%	3.0%	3.6%
Martin Co.	5,447	5,296	151	2.8%	2.4%	2.6%
Monroe Co.	71,746	69,595	2,151	3.0%	2.1%	2.8%
Orange Co.	8,429	8,126	303	3.6%	2.7%	4.1%
Owen Co.	9,477	9,125	352	3.7%	3.0%	3.5%
Bloomington	39,158	37,974	1,184	3.0%	2.0%	2.9%

Source: Indiana Department of Workforce Development, Research & Analysis, Local Area Unemployment Statistics | Unemployment Statistics Released: 02/23 | Notes: The data displayed are presented as estimates only. The most recent month's data are always preliminary and are revised when the next month's data are released.

Consumer Price Index (CPI-U Change), Unadjusted Percent Change to January 2023 from				
CPI Item	Jan-22	Dec-22	Jan-22	Dec-22
	U.S. City		Midwest Region*	
All Items	6.4%	0.8%	6.0%	0.8%
Food & Beverages	9.9%	0.7%	10.8%	0.8%
Housing	8.2%	1.0%	6.8%	0.5%
Apparel	3.1%	2.6%	2.7%	3.9%
Transportation	3.8%	0.7%	4.6%	1.8%
Medical Care	3.1%	0.1%	2.8%	-0.1%
Recreation	4.8%	0.7%	5.6%	0.0%
Education & Communication	1.0%	0.3%	0.8%	0.6%
Other Goods & Services	6.2%	0.6%	6.5%	0.6%

*Midwest region = Midwest Urban Average. Midwest Region includes Illinois, Indiana, Iowa, Kansas, Michigan, Minnesota, Missouri, Nebraska, North Dakota, Ohio, South Dakota and Wisconsin | Source: U.S. Bureau of Labor Statistics



Source: Indiana Department of Workforce Development, Research and Analysis

WARN Notices

WARN Notices for Region 8 for January 2023				
Company	City	County	# of workers affected	Notice Date

There are no WARN Notices for January 2023 for EGR 8.

Source: Indiana Department of Workforce Development, WARN Notices | For information on WARN Act requirements, you may go to the U.S. Department of Labor Employment Training Administration Fact Sheet:

<https://www.doleta.gov/programs/factsht/warn.htm>

Unemployment Claims: January 2023

Region 8

Initial Claims

01/07/23 - 160(D)

01/14/23 - 164(D)

01/21/23 - 95(D)

01/28/23 - 125(D)

Continued Claims

01/07/23 - 594

01/14/23 - 592

01/21/23 - 612

01/28/23 - 670

Total Claims

01/07/23 - 754

01/14/23 - 756

01/21/23 - 707

01/28/23 - 795

State of Indiana

Initial Claims

01/07/23 - 6,934

01/14/23 - 5,469

01/21/23 - 4,216

01/28/23 - 4,225

Continued Claims

01/07/23 - 34,266

01/14/23 - 31,699

01/21/23 - 32,137

01/28/23 - 32,407

Total Claims

01/07/23 - 41,200

01/14/23 - 37,168

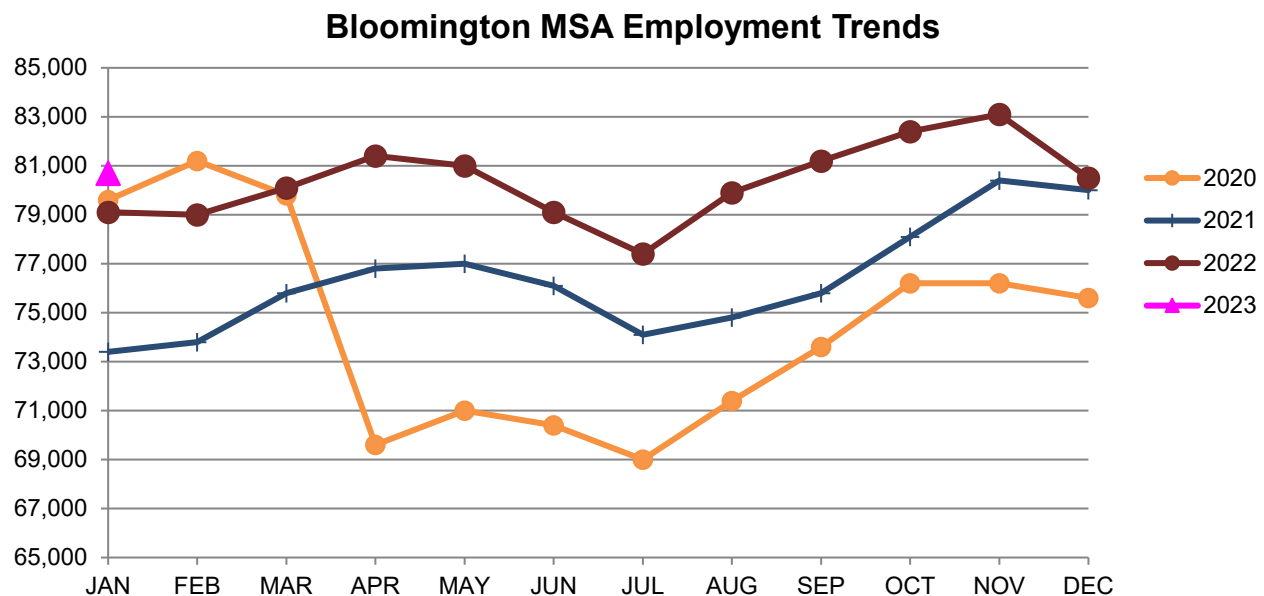
01/21/23 - 36,353

01/28/23 - 36,632

(D) indicates item is affected by non-disclosure issues relating to industry or ownership status | Source: Indiana Department of Workforce Development, Research and Development

Bloomington MSA						
Wage and Salaried Employment	January 2023			# Change	% Change	# Change % Change
Industry	Jan-23	Dec-22	Jan-22	Dec-22 to Jan-23	Jan-22 to Jan-23	
Total Nonfarm	80,700	80,500	79,100	200	0.3%	1,600 2.0%
Total Private	57,400	58,400	55,500	-1,000	-1.7%	1,900 3.4%
Goods Producing	15,500	15,800	15,100	-300	-1.9%	400 2.7%
Service-Providing	65,200	64,700	64,000	500	0.8%	1,200 1.9%
Private Service Providing	41,900	42,600	40,400	-700	-1.6%	1,500 3.7%
Mining, Logging and Construction	3,100	3,200	3,000	-100	-3.1%	100 3.3%
Manufacturing	12,400	12,600	12,100	-200	-1.6%	300 2.5%
Durable Goods	6,700	6,800	6,600	-100	-1.5%	100 1.5%
Trade, Transportation, and Utilities	10,400	10,600	9,700	-200	-1.9%	700 7.2%
Wholesale Trade	2,100	2,100	2,000	0	0.0%	100 5.0%
Retail Trade	7,000	7,100	6,500	-100	-1.4%	500 7.7%
Transportation, Warehousing, and Utilities	1,300	1,400	1,200	-100	-7.1%	100 8.3%
Information	700	800	800	-100	-12.5%	-100 -12.5%
Financial Activities	2,900	3,000	3,000	-100	-3.3%	-100 -3.3%
Professional and Business Services	5,900	6,000	5,700	-100	-1.7%	200 3.5%
Education and Health Services	11,000	11,000	10,400	0	0.0%	600 5.8%
Leisure and Hospitality	8,800	8,900	8,600	-100	-1.1%	200 2.3%
Other Services	2,200	2,300	2,200	-100	-4.4%	0 0.0%
Total Government	23,300	22,100	23,600	1,200	5.4%	-300 -1.3%
Federal Government	300	300	300	0	0.0%	0 0.0%
State Government	17,900	16,600	18,500	1,300	7.8%	-600 -3.2%
Local Government	5,100	5,200	4,800	-100	-1.9%	300 6.3%
Local Government Educational Services	2,500	2,600	2,400	-100	-3.9%	100 4.2%
Local Government excluding Educational Services	2,600	2,600	2,400	0	0.0%	200 8.3%

Source: Indiana Dept of Workforce Development, Research and Analysis, Current Employment Statistics



Source: Indiana Department of Workforce Development, Research & Analysis, Current Employment Statistics | Note: Historical data for the most recent 4 years (both seasonally adjusted and not seasonally adjusted) are revised near the beginning of each calendar year, prior to the release of January estimates for statewide data.

Frequently Listed Jobs	
Top 20 job listings in Region 8 in the past month	
Rank	Occupations
1	Registered Nurses
2	Nursing Assistants
3	Social and Human Service Assistants
4	Licensed Practical and Licensed Vocational Nurses
5	Personal Care Aides
6	Heavy and Tractor-Trailer Truck Drivers
7	Maids and Housekeeping Cleaners
8	Medical and Health Services Managers
9	Mental Health and Substance Abuse Social Workers
10	Network and Computer Systems Administrators
11	Production Workers, All Other
12	Assemblers and Fabricators, All Other
13	Cooks, Institution and Cafeteria
14	Food Preparation Workers
15	Maintenance and Repair Workers, General
16	Packaging and Filling Machine Operators and Tenders
17	Physical Therapists
18	Stockers and Order Fillers
19	Customer Service Representatives
20	Electronics Engineers, Except Computer

Source: Indiana Workforce Development, Indiana Career Connect

Applicant Pool	
Top 20 occupations desired by applicants on their resumes in the past 12 months	
Occupations	# of applicants
Assemblers and Fabricators, All Other	317
Production Workers, All Other	274
Helpers--Production Workers	181
Cashiers	168
Office Clerks, General	119
Laborers and Freight, Stock, and Material Movers, Hand	117
Customer Service Representatives	112
Welders, Cutters, Solderers, and Brazers	106
Heavy and Tractor-Trailer Truck Drivers	98
Office and Administrative Support Workers, All Other	97
Retail Salespersons	91
Construction Laborers	87
Receptionists and Information Clerks	83
Waiters and Waitresses	81
Janitors and Cleaners, Except Maids and Housekeeping Cleaners	77
Extraction Workers, All Other	76
Carpenters	74
Construction and Related Workers, All Other	71
Food Preparation Workers	69
Managers, All Other	68

Source: Lightcast

Bloomington photographer's work to be displayed at Amsterdam museum next to Vermeer's 'Girl With a Pearl Earring' after winning contest

Norman Crampton, Special to The Hi-T, (Bloomington) Herald-Times

Sunday, March 12, 2023 6:48 PM

A professional photographer in Bloomington will have her work on display soon at a museum in The Hague, Amsterdam, next to the world-famous painting by Johannes Vermeer, “Girl With a Pearl Earring.”

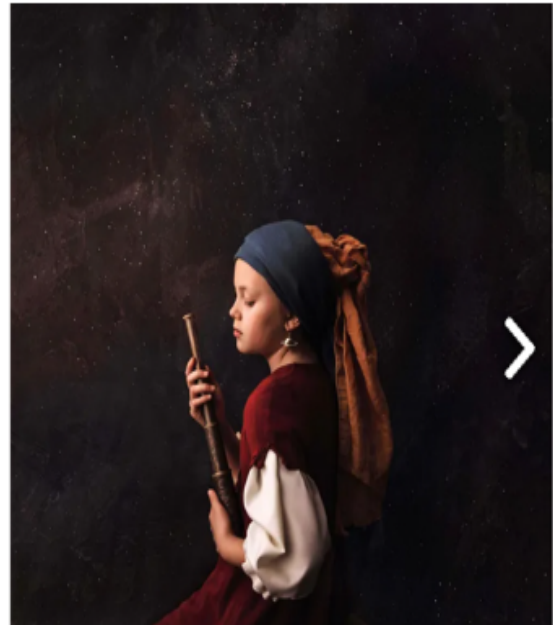
The Bloomington photographer, Katy Lengacher, calls her photo “Girl With Big Dreams,” and it shows her daughter, Sagan, in a serious pose — and wearing a rather large earring.

Lengacher said entering her photo in the international competition was a hurry-up deal.

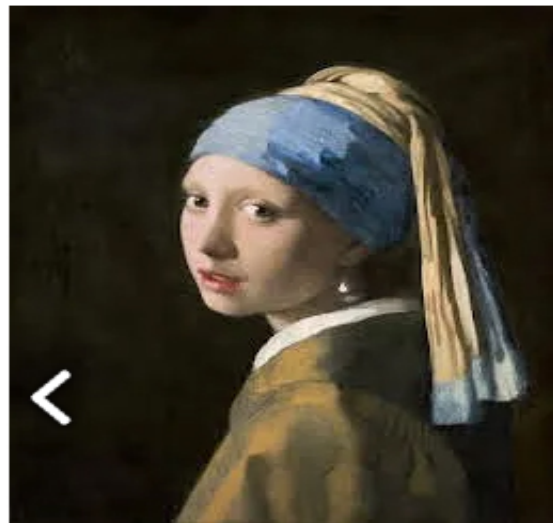
“I actually heard about it only last month on Instagram,” she said. “I slipped in there right at the end of the submissions period. It was submitted to a jury of the people managing the exhibition at The Hague — curators.”

“And,” she added, “we’re planning to go over and see it, the first week of May — Amsterdam!”

© 2023 HeraldTimesOnline, Bloomington, IN

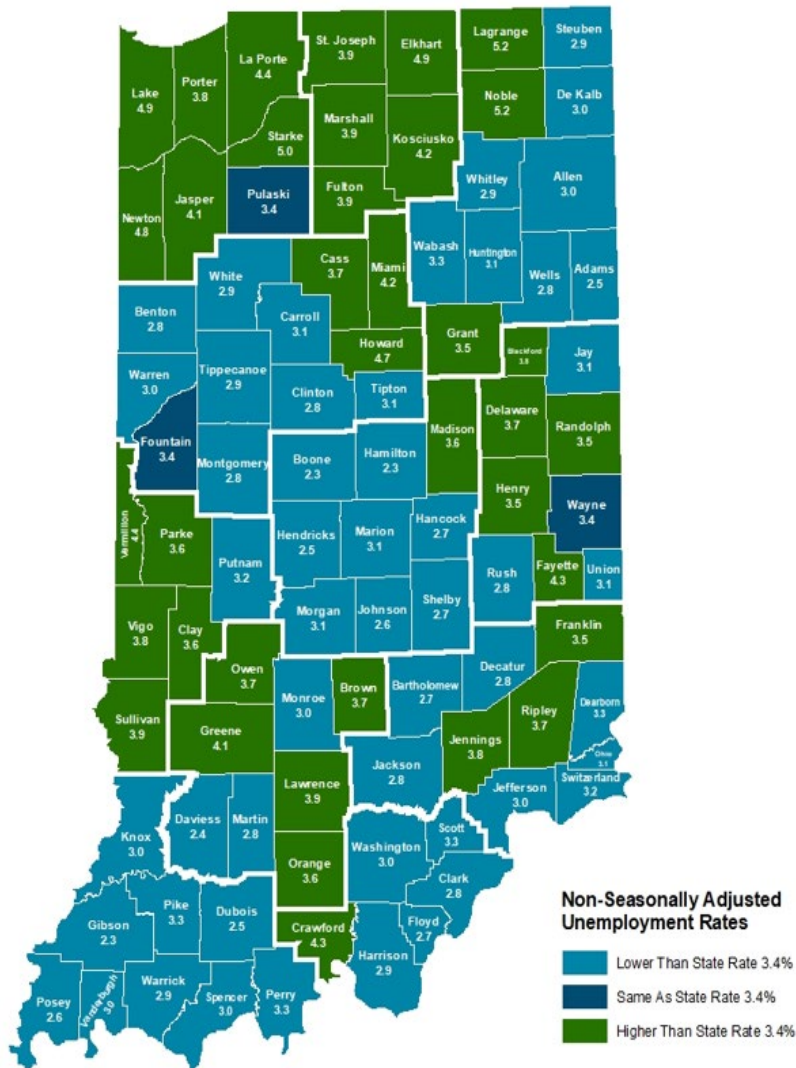


Sagan Lengacher, a Bloomington sixth-grader, wears a rather large, Saturn-styled earring in a photo by her mother, Katy, titled “Girl With Big Dreams,” which will be shown during May in a museum in Amsterdam next to Vermeer’s classic painting “Girl With a Pearl Earring.” Katy Lengacher/Courtesy Photo



Johannes Vermeer executed the world-famous painting now known as “Girl With a Pearl Earring” in about 1665, during the Dutch Golden Age. The Amsterdam museum where it hangs has sponsored a world-competition for photos on the earring theme, and Bloomington photographer Katy Lengacher was a winner. *Courtesy Photo Provided By Mauritshuis Museum*

County Unemployment Rates January 2023



Non-Seasonally Adjusted Unemployment Rates

- Lower Than State Rate 3.4%
- Same As State Rate 3.4%
- Higher Than State Rate 3.4%

Indiana Non-Seasonally Adjusted Rate 3.4%
Indiana Seasonally Adjusted Rate 3.1%
Source: DWD, Local Area Unemployment Statistics



INDIANA DEPARTMENT OF
WORKFORCE
DEVELOPMENT

Questions?

Please contact the DWD
Regional Workforce
Analyst listed below:

Cassie Janes

Research and Analysis

[Indiana Department of
Workforce Development](https://www.in.gov/dwd/)

765.507.9710

cjanes@dwd.in.gov