

LABOR MARKET REVIEW



November 2021 Labor Market Review

Reported by: Kim Stevenson

Regional Workforce Analyst

[Email Kim](#)

kstevenson@dwd.in.gov

Tel: 812-242-6427

LABOR MARKET REVIEW

Economic Growth Region 7

Statistical Data Report for November 2021, Released January 2022

State Employment and Unemployment

Unemployment rates were lower in November in 40 states and the District of Columbia and stable in 10 states, the U.S. Bureau of Labor Statistics reported. Forty-eight states and the District had jobless rate decreases from a year earlier and two states were little changed. The national unemployment rate, 4.2 percent, fell by 0.4 percentage point over the month and was 2.5 points lower than in November 2020.

Nebraska had the lowest jobless rate in November, 1.8 percent, followed by Utah, 2.1 percent. The rates in Georgia (2.8 percent), Nebraska (1.8 percent), Oklahoma (2.5 percent), Utah (2.1 percent), and West Virginia (4.0 percent) set new series lows. (All state series begin in 1976.) California and Nevada had the highest unemployment rates, 6.9 percent and 6.8 percent, respectively. In total, 18 states had unemployment rates lower than the U.S. figure of 4.2 percent, 17 states and the District of Columbia had higher rates, and 15 states had rates that were not appreciably different from that of the nation.

Nonfarm payroll employment increased in 16 states and was essentially unchanged in 34 states and the District of Columbia in November 2021. Over the year, 49 states and the District added nonfarm payroll jobs and 1 state was essentially unchanged.

The largest job gains occurred in Texas (+75,100), Florida (+51,100), and California (+45,700). The largest percentage increase occurred in North Dakota (+0.8 percent), followed by Florida, Montana, New Jersey, and Texas (+0.6 percent each).



Economic Growth Region (EGR) 7

Clay, Parke, Putnam, Sullivan, Vermillion and Vigo Counties

Unemployment Rates by State (seasonally adjusted): November 2021

U.S. - 4.2%
 Illinois - 5.7%
Indiana - 3%
 Kentucky - 4.1%
 Michigan - 5.9%
 Ohio - 4.8%

Source: U.S. Department of Labor, Bureau of Labor Statistics

Unemployment Rank by County (of 92 counties): November 2021

#7 - Vigo (2.6%)
 #9 - Vermillion (2.5%)
 #17 - Sullivan (2.3%)
 #20 - Clay (2.2%)
 #43 - Parke (1.8%)
 #45 - Putnam (1.8%)

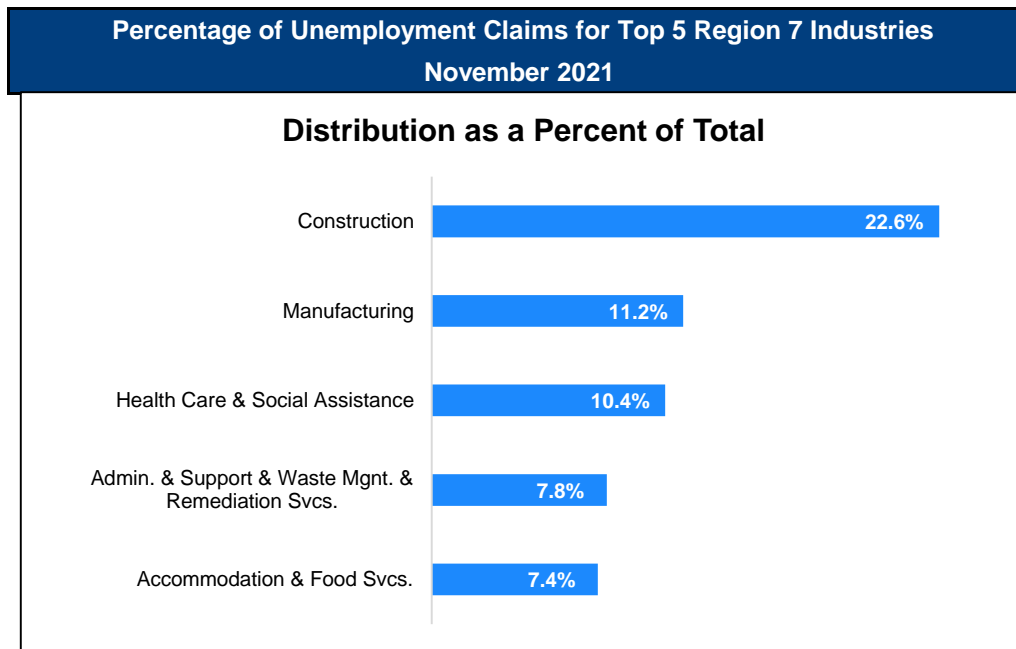
Source: Indiana Department of Workforce Development, Research and Analysis, Local Area Unemployment Statistics

November 2021 Labor Force Estimates (not seasonally adjusted)						
Area	Labor Force	Employed	Unemployed	Nov-21	Oct-21	Nov-20
U.S.	162,099,000	155,797,000	6,302,000	3.9%	4.3%	6.4%
IN	3,311,883	3,242,407	69,476	2.1%	2.5%	4.8%
EGR 7	93,301	91,164	2,137	2.3%	2.8%	4.9%
Terre Haute MSA	70,074	68,346	1,728	2.5%	3.0%	5.2%
Clay Co.	11,253	11,010	243	2.2%	2.8%	4.8%
Parke Co.	6,823	6,703	120	1.8%	2.1%	3.6%
Putnam Co.	16,404	16,115	289	1.8%	2.2%	3.9%
Sullivan Co.	7,700	7,521	179	2.3%	2.7%	4.6%
Vermillion Co.	6,422	6,259	163	2.5%	3.0%	4.8%
Vigo Co.	44,699	43,556	1,143	2.6%	3.1%	5.5%
Terre Haute	23,391	22,758	633	2.7%	3.4%	6.3%

Source: Indiana Department of Workforce Development, Research & Analysis, Local Area Unemployment Statistics | Unemployment Statistics Released: 12/21 | Notes: The data displayed are presented as estimates only. The most recent month's data are always preliminary and are revised when the next month's data are released.

Consumer Price Index (CPI-U Change), Unadjusted Percent Change to November 2021 from				
CPI Item	Nov-20	Oct-21	Nov-20	Oct-21
	U.S. City		Midwest Region*	
All Items	6.8%	0.5%	7.3%	0.4%
Food & Beverages	5.8%	0.4%	6.6%	0.5%
Housing	4.8%	0.3%	5.8%	0.2%
Apparel	5.0%	-1.6%	2.6%	-2.7%
Transportation	21.1%	1.9%	21.7%	1.8%
Medical Care	1.7%	0.2%	0.9%	0.2%
Recreation	3.2%	-0.3%	2.4%	0.2%
Education & Communication	1.7%	-0.1%	1.0%	-0.3%
Other Goods & Services	4.4%	0.2%	4.4%	0.3%

*Midwest region = Midwest Urban Average. Midwest Region includes Illinois, Indiana, Iowa, Kansas, Michigan, Minnesota, Missouri, Nebraska, North Dakota, Ohio, South Dakota and Wisconsin | Source: U.S. Bureau of Labor Statistics



Source: Indiana Department of Workforce Development, Research and Analysis

WARN Notices

WARN Notices for Region 7 for November 2021				
Company	City	County	# of Workers affected	Notice Date

There are no WARN Notices for November 2021 for EGR 7.

Source: Indiana Department of Workforce Development, WARN Notices | For information on WARN Act requirements, you may go to the U.S. Department of Labor Employment Training Administration Fact Sheet:

<https://www.doleta.gov/programs/factsht/warn.htm>

Unemployment Claims: November 2021

Region 7

Initial Claims

11/06/21 - 161(D)

11/13/21 - 140(D)

11/20/21 - 139

11/27/21 - 91(D)

Continued Claims

11/06/21 - 564

11/13/21 - 563

11/20/21 - 551

11/27/21 - 571

Total Claims

11/06/21 - 725

11/13/21 - 703

11/20/21 - 690

11/27/21 - 662

State of Indiana

Initial Claims

11/06/21 - 3,574

11/13/21 - 3,798

11/20/21 - 3,566

11/27/21 - 3,203

Continued Claims

11/06/21 - 28,405

11/13/21 - 26,895

11/20/21 - 22,940

11/27/21 - 29,179

Total Claims

11/06/21 - 31,979

11/13/21 - 30,693

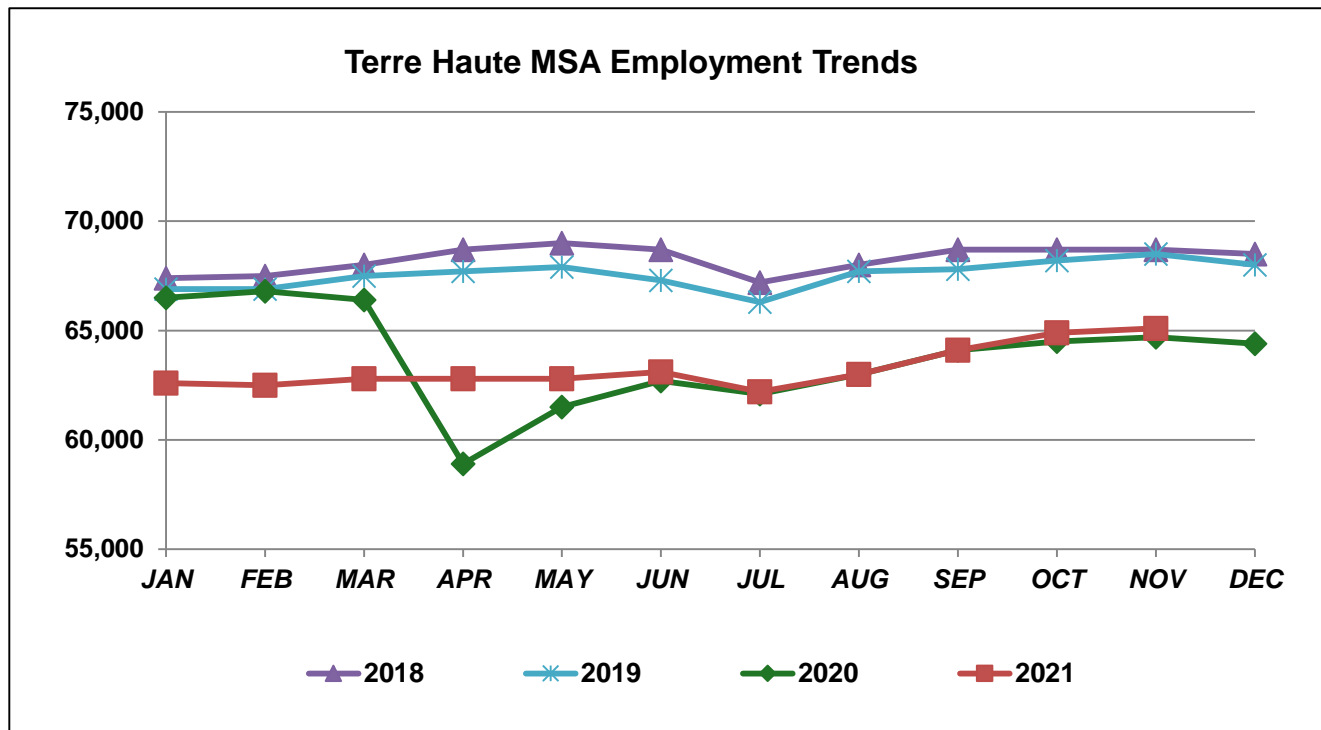
11/20/21 - 26,506

11/27/21 - 32,382

(D) indicates item is affected by non-disclosure issues relating to industry or ownership status | Source: Indiana Department of Workforce Development, Research and Analysis

Terre Haute MSA							
Wage and Salaried Employment	November 2021			# Change	% Change	# Change	% Change
Industry	Nov-21	Oct-21	Nov-20	Oct-21 to Nov-21		Nov-20 to Nov-21	
Total Nonfarm	65,100	64,900	64,700	200	0.3%	400	0.6%
Total Private	53,300	53,200	53,200	100	0.2%	100	0.2%
Goods Producing	12,000	12,100	12,500	-100	-0.8%	-500	-4.0%
Service-Providing	53,100	52,800	52,200	300	0.6%	900	1.7%
Private Service Providing	41,300	41,100	40,700	200	0.5%	600	1.5%
Mining, Logging and Construction	3,600	3,700	3,700	-100	-2.7%	-100	-2.7%
Manufacturing	8,400	8,400	8,800	0	0.0%	-400	-4.6%
Trade, Transportation, and Utilities	13,100	12,800	12,900	300	2.3%	200	1.6%
Wholesale Trade	1,600	1,600	1,600	0	0.0%	0	0.0%
Retail Trade	8,800	8,600	8,700	200	2.3%	100	1.2%
Transportation, Warehousing, and Utilities	2,700	2,600	2,600	100	3.9%	100	3.9%
Information	500	500	500	0	0.0%	0	0.0%
Financial Activities	2,400	2,400	2,400	0	0.0%	0	0.0%
Professional and Business Services	3,800	3,900	3,900	-100	-2.6%	-100	-2.6%
Education and Health Services	12,200	12,100	12,000	100	0.8%	200	1.7%
Leisure and Hospitality	6,900	7,000	6,700	-100	-1.4%	200	3.0%
Other Services	2,400	2,400	2,300	0	0.0%	100	4.4%
Total Government	11,800	11,700	11,500	100	0.9%	300	2.6%
Federal Government	1,200	1,200	1,200	0	0.0%	0	0.0%
State Government	3,300	3,300	3,400	0	0.0%	-100	-2.9%
Local Government	7,300	7,200	6,900	100	1.4%	400	5.8%
Local Government Educational Services	3,700	3,700	3,500	0	0.0%	200	5.7%

Source: Indiana Dept. of Workforce Development, Research and Analysis, Current Employment Statistics



Source: Indiana Department of Workforce Development, Research & Analysis, Current Employment Statistics | Note: Historical data for the most recent 4 years (both seasonally adjusted and not seasonally adjusted) are revised near the beginning of each calendar year, prior to the release of January estimates for statewide data.

Frequently Listed Jobs	
Top 20 job listings in Region 7 in the past month	
Rank	Occupations
1	Registered Nurses
2	Home Health Aides
3	Licensed Practical and Licensed Vocational Nurses
4	Nursing Assistants
5	Operating Engineers and Other Construction Equipment Operators
6	Personal Care Aides
7	Human Resources Specialists
8	First-Line Supervisors of Production and Operating Workers
9	Janitors and Cleaners, Except Maids and Housekeeping Cleaners
10	Medical Secretaries
11	Recreation Workers
12	Respiratory Therapists
13	Agricultural Equipment Operators
14	Food Preparation Workers
15	Heavy and Tractor-Trailer Truck Drivers
16	Maintenance and Repair Workers, General
17	Production Workers, All Other
18	Social and Human Service Assistants
19	Cooks, Fast Food
20	Driver/Sales Workers

Source: Indiana Workforce Development, Indiana Career Connect

Applicant Pool	
Top 20 occupations desired by applicants on their resumes in the past 12 months	
Occupations	# of Applicants
Production Workers, All Other	973
Assemblers and Fabricators, All Other	780
Helpers--Production Workers	727
Cashiers	658
Customer Service Representatives	492
Nursing Assistants	426
Laborers and Freight, Stock, and Material Movers, Hand	383
Office Clerks, General	325
Stock Clerks and Order Fillers	280
Combined Food Preparation and Serving Workers, Including Fast Food	279
Retail Salespersons	258
Waiters and Waitresses	253
Office and Administrative Support Workers, All Other	246
Managers, All Other	245
Welders, Cutters, Solderers, and Brazers	243
Construction Laborers	240
Carpenters	229
Receptionists and Information Clerks	211
Packers and Packagers, Hand	205
Food Preparation Workers	203

Source: Indiana Workforce Development, Indiana Career Connect

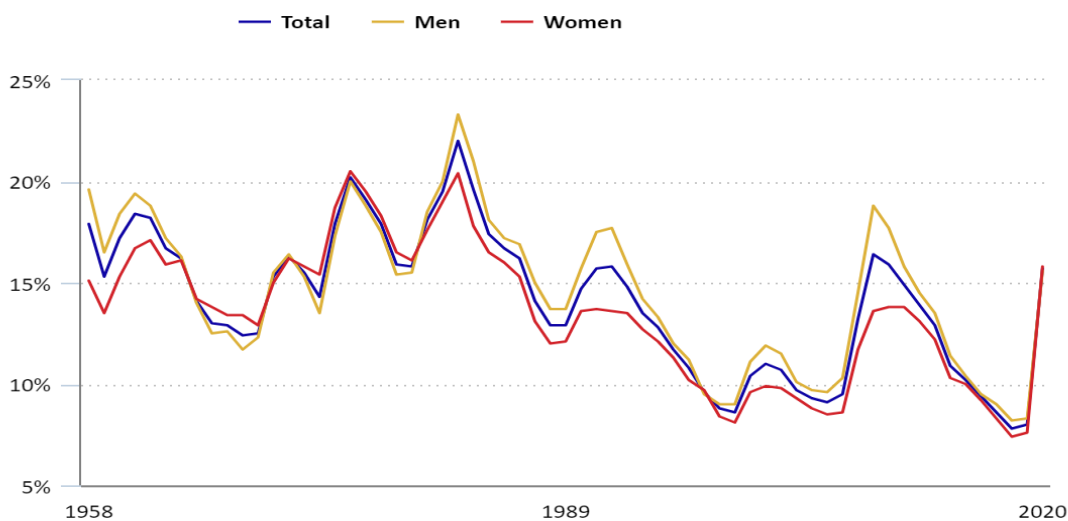
TED: The Economics Daily

15.7 percent of people who worked or looked for work experienced unemployment in 2020

The number of people who experienced unemployment at some point during 2020 was 26.4 million, up by 12.9 million from 2019. Overall, 168.6 million people worked or looked for work at some time in 2020, down by 2.1 million from 2019. These changes reflect the effects of the COVID-19 pandemic on the labor market in 2020.

The work-experience unemployment rate (those looking for work during the year as a percent of those who worked or looked for work during the year) nearly doubled, increasing from 8.0 percent in 2019 to 15.7 percent in 2020. This is the highest rate since 2010, when it was 15.9 percent.

Number of people unemployed at some time during the year as a percent of those who worked or looked for work during the year, 1958–2020



Click legend items to change data display. Hover over chart to view data.
Source: U.S. Bureau of Labor Statistics.

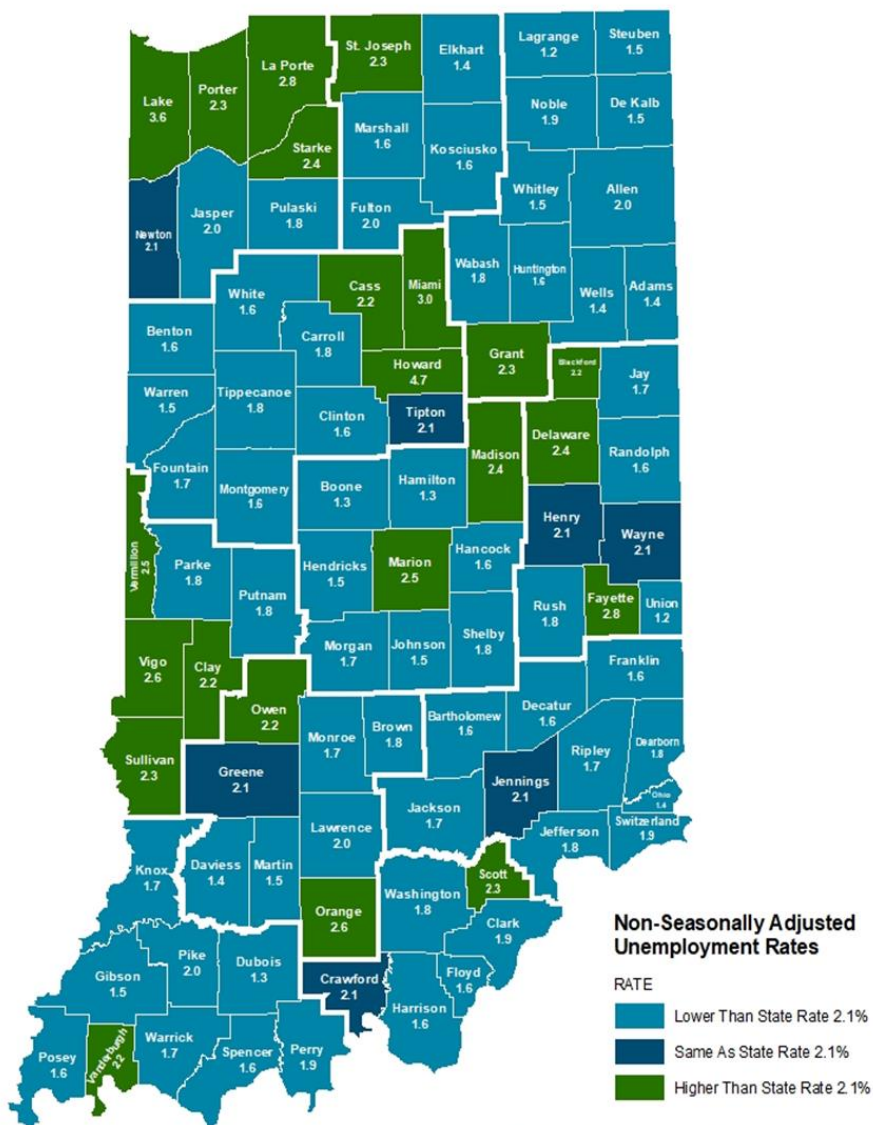


In 2020, the work-experience unemployment rates for men (15.6 percent) and women (15.8 percent) were little different from each other. The rates for both men and women rose sharply from the prior year.

These data are from the [Current Population Survey](#). For more information, see "[Work Experience of the Population — 2020](#)."

Source: Bureau of Labor Statistics, U.S. Department of Labor, The Economics Daily, 15.7 percent of people who worked or looked for work experienced unemployment in 2020 at <https://www.bls.gov/opub/ted/2021/15-7-percent-of-people-who-worked-or-looked-for-work-experienced-unemployment-in-2020.htm> (visited December 22, 2021).

County Unemployment Rates November 2021



Indiana Non-Seasonally Adjusted Rate 2.1%
 Indiana Seasonally Adjusted Rate 3.0%
 Source: DWD, Local Area Unemployment Statistics



INDIANA
 DEPARTMENT OF
WORKFORCE
 DEVELOPMENT

Kim Stevenson

Research and Analysis

[Indiana Department of
 Workforce Development](https://www.in.gov/workforce/)

30 North 8th St
 Terre Haute, IN 47807
 812-242-6427
kstevenson@dwd.in.gov