



May 2026 Labor Market Review

Reported by: **Cassie Janes**

Regional Workforce Analyst

[Email Cassie](mailto:cjan@indiana.gov)

cjan@indiana.gov



INDIANA DEPARTMENT OF
WORKFORCE
DEVELOPMENT

Economic Growth Region 6

Statistical Data Report for May 2026, Released July 2026

State Employment and Unemployment

Unemployment rates were lower in May in 6 states, higher in 2 states, and stable in 42 states and the District of Columbia, the U.S. Bureau of Labor Statistics reported. Sixteen states had jobless rate increases from a year earlier, 6 states had decreases, and 28 states and the District had little change. The national unemployment rate, 4.3 percent, was unchanged both over the month and over the year.

In May, nonfarm payroll employment increased in 2 states and was essentially unchanged in 48 states and the District of Columbia. Over the year, nonfarm payroll employment increased in 2 states, decreased in 1 state and the District, and was essentially unchanged in 47 states.

South Dakota had the lowest jobless rate in May, 2.1 percent. The District of Columbia had the highest unemployment rate, 6.1 percent. The next highest rate was in California, 5.3 percent. In total, 18 states had unemployment rates lower than the U.S. figure of 4.3 percent, 7 states and the District had higher rates, and 25 states had rates that were not appreciably different from that of the nation.



Economic Growth Region (EGR) 6

Blackford, Delaware, Fayette, Henry, Jay, Randolph, Rush, Union, and Wayne Counties

Unemployment Rates by State (seasonally adjusted): May 2026

U.S. - 4.3%

Illinois - 5.1%

Indiana - 3.3%

Kentucky - 4.5%

Michigan - 5.1%

Ohio - 3.7%

Source: U.S. Department of Labor, Bureau of Labor Statistics

Unemployment Rank by County (of 92 counties): May 2026

#5 - Delaware (3.7%)

#6 - Fayette (3.7%)

#10 - Blackford (3.5%)

#29 - Wayne (3.3%)

#48 - Randolph (3.1%)

#52 - Henry (3%)

#57 - Rush (3%)

#65 - Jay (2.9%)

#90 - Union (2.6%)

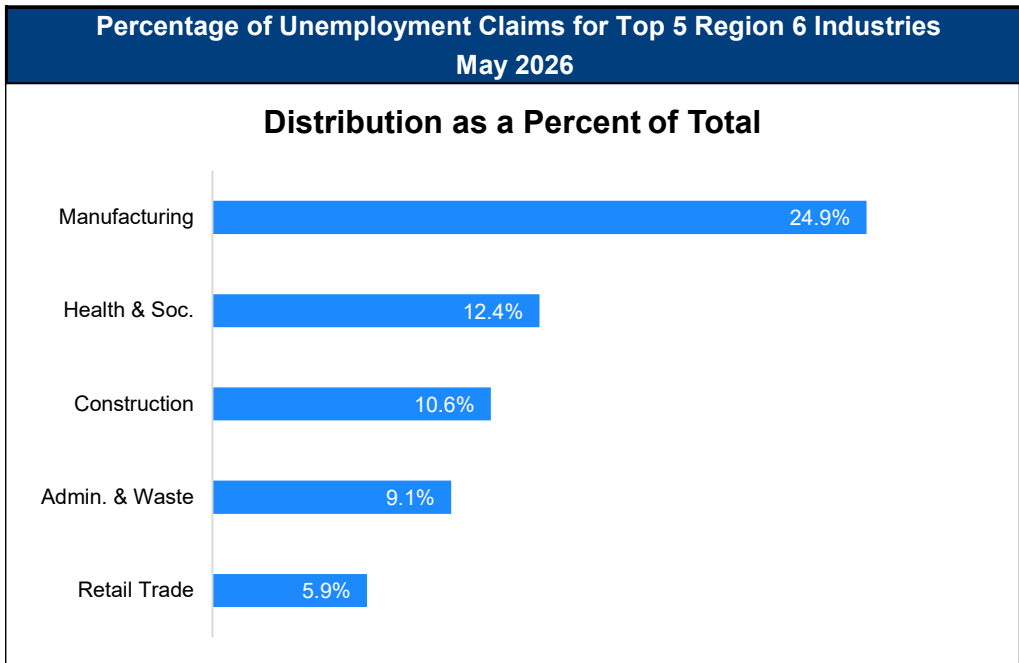
Source: Indiana Department of Workforce Development, Research and Development, Local Area Unemployment Statistics

May 2026 Labor Force Estimates (not seasonally adjusted)						
Area	Labor Force	Employed	Unemployed	May-26	Apr-26	May-25
U.S.	169,801,000	162,897,000	6,904,000	4.1%	4.0%	4.0%
IN	3,516,430	3,403,025	113,405	3.2%	2.8%	3.6%
EGR 6	157,508	152,209	5,299	3.4%	2.8%	3.9%
Muncie MSA	53,124	51,148	1,976	3.7%	3.1%	4.2%
Blackford Co.	5,231	5,046	185	3.5%	3.0%	4.0%
Delaware Co.	53,124	51,148	1,976	3.7%	3.1%	4.2%
Fayette Co.	10,191	9,817	374	3.7%	3.3%	4.4%
Henry Co.	22,729	22,040	689	3.0%	2.6%	3.7%
Jay Co.	9,775	9,487	288	2.9%	2.4%	3.5%
Randolph Co.	12,553	12,163	390	3.1%	2.7%	3.7%
Rush Co.	8,469	8,216	253	3.0%	2.5%	3.3%
Union Co.	4,377	4,263	114	2.6%	2.0%	2.8%
Wayne Co.	31,059	30,029	1,030	3.3%	2.8%	3.8%
Connersville	5,567	5,338	229	4.1%	3.8%	4.8%
Muncie	30,129	28,915	1,214	4.0%	3.4%	4.5%
New Castle	8,364	8,114	250	3.0%	2.6%	3.6%
Richmond	15,674	15,100	574	3.7%	3.1%	4.2%

Source: Indiana Department of Workforce Development, Research & Analysis, Local Area Unemployment Statistics | Unemployment Statistics Released: 06/26 | Notes: The data displayed are presented as estimates only. The most recent month's data are always preliminary and are revised when the next month's data are released.

Consumer Price Index (CPI-U Change), Unadjusted Percent Change to May 2026 from				
CPI Item	May-25	Apr-26	May-25	Apr-26
	U.S. City		Midwest Region*	
All Items	4.2%	0.6%	5.0%	1.1%
Food & Beverages	3.0%	0.1%	3.2%	0.4%
Housing	3.6%	0.3%	4.6%	0.3%
Apparel	4.8%	-0.4%	6.1%	0.2%
Transportation	9.3%	2.3%	10.1%	4.1%
Medical Care	2.6%	0.3%	3.6%	0.5%
Recreation	2.6%	0.3%	4.8%	0.7%
Education & Communication	0.8%	0.7%	1.1%	0.9%
Other Goods & Services	4.9%	0.8%	2.7%	2.1%

*Midwest region = Midwest Urban Average. Midwest Region includes Illinois, Indiana, Iowa, Kansas, Michigan, Minnesota, Missouri, Nebraska, North Dakota, Ohio, South Dakota and Wisconsin | Source: U.S. Bureau of Labor Statistics



Source: Indiana Department of Workforce Development, Research and Analysis

WARN Notices

WARN Notices for Region 6 for May 2026				
Company	City	County	# of workers affected	Notice Date

There are no WARN Notices for May 2026 for EGR 6.

Source: Indiana Department of Workforce Development, WARN Notices | For information on WARN Act requirements, you may go to the U.S. Department of Labor Employment Training Administration Fact Sheet:

<https://www.doleta.gov/programs/factsht/warn.htm>

Unemployment Claims: May 2026

Region 6

Initial Claims

05/02/26 - 64(D)

05/09/26 - 69(D)

05/16/26 - 67(D)

05/23/26 - 49(D)

05/30/26 - 59(D)

Continued Claims

05/02/26 - 645

05/09/26 - 642

05/16/26 - 632

05/23/26 - 626

05/30/26 - 634

Total Claims

05/02/26 - 709

05/09/26 - 711

05/16/26 - 699

05/23/26 - 675

05/30/26 - 693

State of Indiana

Initial Claims

05/02/26 - 2,224

05/09/26 - 2,550

05/16/26 - 2,385

05/23/26 - 1,976

05/30/26 - 2,164

Continued Claims

05/02/26 - 19,186

05/09/26 - 18,867

05/16/26 - 18,012

05/23/26 - 18,611

05/30/26 - 18,982

Total Claims

05/02/26 - 21,410

05/09/26 - 21,417

05/16/26 - 20,397

05/23/26 - 20,587

05/30/26 - 21,146

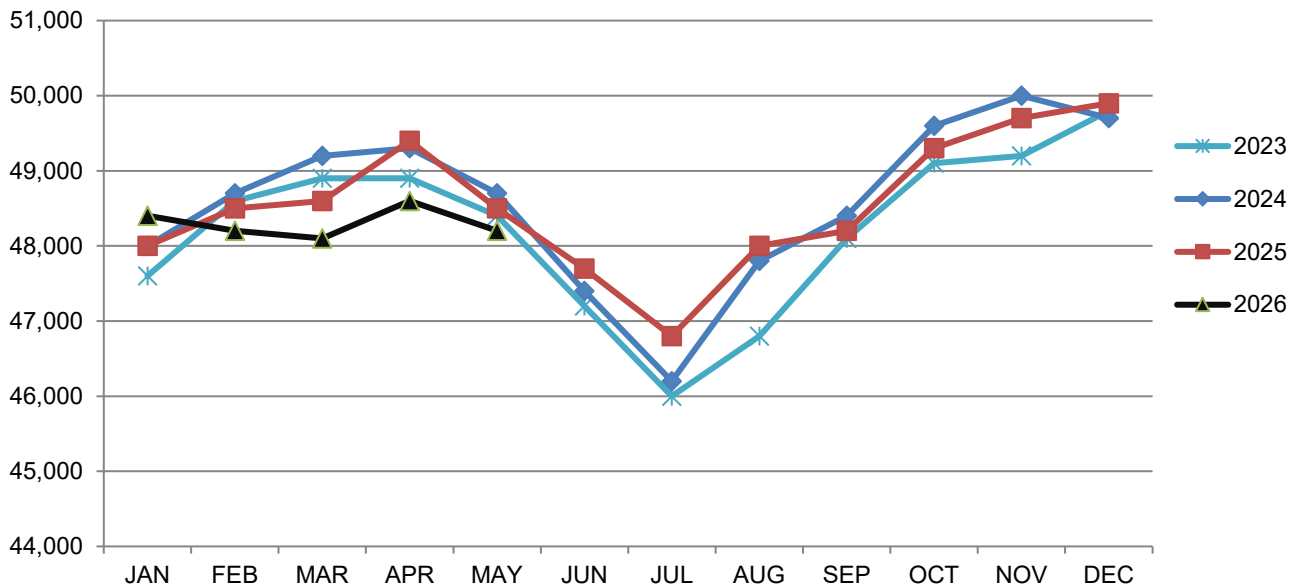
(D) indicates item is affected by non-disclosure issues relating to industry or ownership status |

Source: Indiana Department of Workforce Development, Research and Development

Muncie MSA							
Wage and Salaried Employment	May 2026			# Change	% Change	# Change	% Change
Industry	May-26	Apr-26	May-25	Apr-26 to May-26	May-25 to May-26		
Total Nonfarm	48,200	48,600	48,500	-400	-0.8%	-300	-0.6%
Total Private	38,000	38,200	38,200	-200	-0.5%	-200	-0.5%
Goods Producing	5,800	5,800	5,600	0	0.0%	200	3.6%
Service-Providing	42,400	42,800	42,900	-400	-0.9%	-500	-1.2%
Private Service Providing	32,200	32,400	32,600	-200	-0.6%	-400	-1.2%
Mining, Logging and Construction	1,600	1,600	1,600	0	0.0%	0	0.0%
Manufacturing	4,200	4,200	4,000	0	0.0%	200	5.0%
Trade, Transportation, and Utilities	8,000	8,000	8,300	0	0.0%	-300	-3.6%
Wholesale Trade	1,300	1,300	1,400	0	0.0%	-100	-7.1%
Retail Trade	5,700	5,700	5,800	0	0.0%	-100	-1.7%
Transportation, Warehousing, and Utilities	1,000	1,000	1,100	0	0.0%	-100	-9.1%
Information	300	300	400	0	0.0%	-100	-25.0%
Financial Activities	2,300	2,300	2,400	0	0.0%	-100	-4.2%
Education and Health Services	10,200	10,200	10,200	0	0.0%	0	0.0%
Leisure and Hospitality	5,000	5,100	5,100	-100	-2.0%	-100	-2.0%
Other Services	2,200	2,200	2,200	0	0.0%	0	0.0%
Government	10,200	10,400	10,300	-200	-1.9%	-100	-1.0%
State Government	6,400	6,500	6,200	-100	-1.5%	200	3.2%
State Government Educational Services	6,200	6,300	6,000	-100	-1.6%	200	3.3%
State Government Excluding Education	200	200	200	0	0.0%	0	0.0%
Local Government	3,700	3,800	3,700	-100	-2.6%	0	0.0%
Local Government Educational Services	2,100	2,200	2,100	-100	-4.6%	0	0.0%
Local Government excluding Educational Services	1,600	1,600	1,600	0	0.0%	0	0.0%

Source: Indiana Dept of Workforce Development, Research and Analysis, Current Employment Statistics

Muncie MSA Employment Trends



Source: Indiana Department of Workforce Development, Research & Analysis, Current Employment Statistics | Note: Historical data for the most recent 4 years (both seasonally adjusted and not seasonally adjusted) are revised near the beginning of each calendar year, prior to the release of January estimates for statewide data.

Frequently Listed Jobs	
Top 20 job listings by number of postings in Region 6 in the past month	
Rank	Occupations
1	Physicians
2	Driver/Sales Workers and Truck Drivers
3	Registered Nurses
4	Retail Salespersons
5	First-Line Supervisors of Sales Workers
6	Therapists
7	Building Cleaning Workers
8	Home Health and Personal Care Aides
9	Licensed Practical and Licensed Vocational Nurses
10	Laborers and Material Movers
11	Miscellaneous Healthcare Support Occupations
12	Food Service Managers
13	Nursing Assistants, Orderlies, and Psychiatric Aides
14	Designers
15	Maintenance and Repair Workers, General
16	Counselors
17	Food Preparation Workers
18	Medical and Health Services Managers
19	Health Practitioner Support Technologists and Technicians
20	Miscellaneous Production Workers

Source: Lightcast

Applicant Pool	
Top 20 occupations desired by applicants on their resumes in the past 12 months	
Occupations	# of applicants
Production Workers, All Other	297
Assemblers and Fabricators, All Other	188
Customer Service Representatives	136
Helpers--Production Workers	110
Cashiers	98
Office Clerks, General	86
Laborers and Freight, Stock, and Material Movers, Hand	80
Office and Administrative Support Workers, All Other	63
Team Assemblers	57
Managers, All Other	51
Extraction Workers, All Other	50
Industrial Truck and Tractor Operators	49
Retail Salespersons	46
Heavy and Tractor-Trailer Truck Drivers	45
Receptionists and Information Clerks	45
Executive Secretaries and Executive Administrative Assistants	44
Construction Laborers	42
Waiters and Waitresses	41
Inspectors, Testers, Sorters, Samplers, and Weighers	40
First-Line Supervisors of Production and Operating Workers	37

Source: Indiana Workforce Development, Indiana Career Connect

SNAPSHOT

May Indiana Employment

Released June 23, 2026



Unemployment Rate

*seasonally adjusted

Unemployment Rate

3.3%



April 2026 Indiana

3.3%



National Unemployment Rate



LABOR FORCE PARTICIPATION RATE*

16+: **63.2%**

25-44: **83.9%**

25-54: **83.4%**



National Labor Force



Open Job Postings

94,059

Jobs

As of May 31, 2026



Weekly UI Continued Claims

19,068

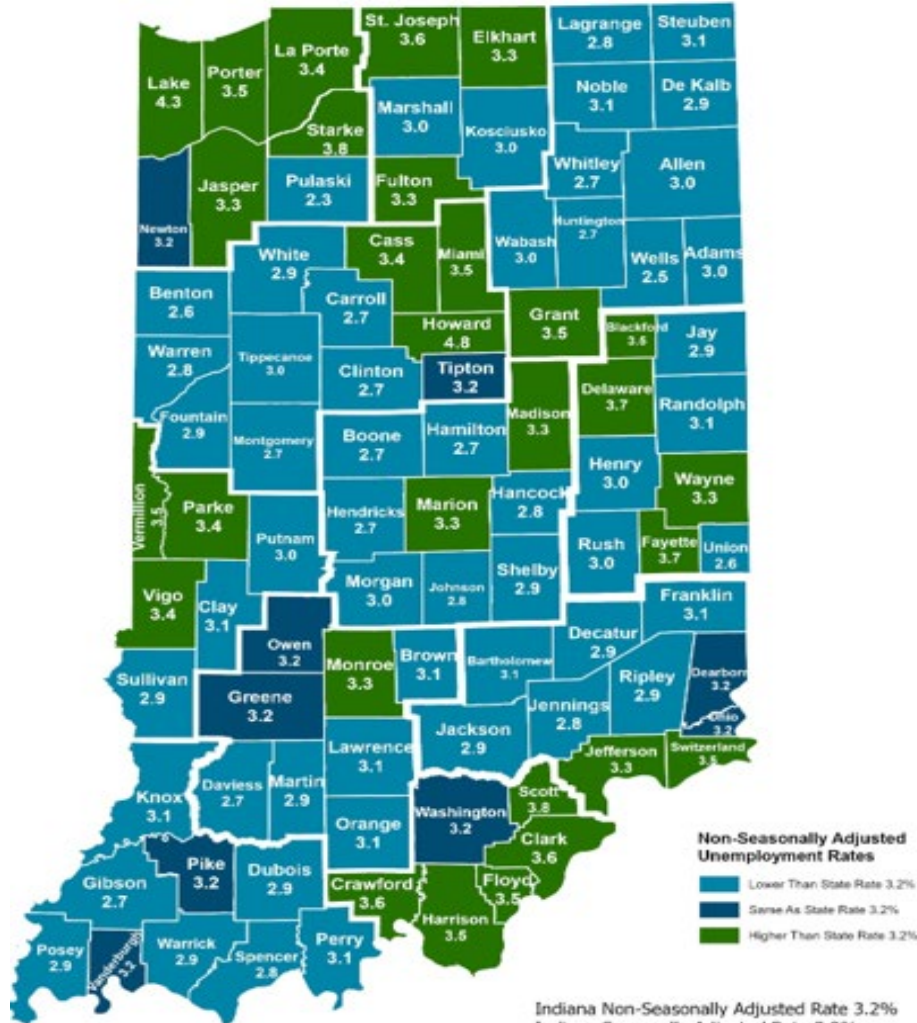


Filed Week Ending June 6, 2026

Source: Local Area Unemployment Statistics, Bureau of Labor Statistics; Indiana Career Connect

* The percentage of Hoosiers 16 and older who are either working or actively looking for work. Those not in the labor force include primarily students, retirees and other non-working populations, such as individuals unable to work due to a disability or illness, or adults responsible for their family's childcare needs.

County Unemployment Rates May 2026



Non-Seasonally Adjusted Unemployment Rates

- Lower Than State Rate 3.2%
- Same As State Rate 3.2%
- Higher Than State Rate 3.2%

Indiana Non-Seasonally Adjusted Rate 3.2%
 Indiana Seasonally Adjusted Rate 3.3%
 Source: DWD, Local Area Unemployment Statistics



Questions?

Please contact the Regional Labor Analyst listed below:

Cassie Janes

[Indiana Department of Workforce Development](https://www.in.gov/dwd/)
cjanes@dwd.in.gov