



HOOSIERS BY THE NUMBERS

Your premier source for labor market information for Indiana.

DWD

INDIANA DEPARTMENT OF
WORKFORCE
DEVELOPMENT

LABOR MARKET REVIEW



March 2026
Labor Market Review

Reported by: Cassie Janes

Regional Workforce Analyst

[Email Cassie](mailto:cjan@dwdd.in.gov)

cjan@dwdd.in.gov

DWD

INDIANA DEPARTMENT OF
WORKFORCE
DEVELOPMENT

Economic Growth Region 6

Statistical Data Report for March 2026, Released May 2026

State Employment and Unemployment

Unemployment rates were little changed in March in all 50 states and the District of Columbia, the U.S. Bureau of Labor Statistics reported. Fourteen states had jobless rate increases from a year earlier, 2 states had decreases, and 34 states and the District had little change. The national unemployment rate, 4.3 percent, changed little over the month and from March 2025.

In March 2026, nonfarm payroll employment increased in 3 states and was essentially unchanged in 47 states and the District of Columbia. Over the year, nonfarm payroll employment decreased in 3 states and the District, increased in 3 states, and was essentially unchanged in 44 states.

South Dakota had the lowest jobless rate in March, 2.3 percent, followed by Hawaii, 2.4 percent, and North Dakota, 2.5 percent. The District of Columbia had the highest unemployment rate, 6.3 percent. The next highest rate was in Delaware, 5.4 percent, followed by California and Nevada, 5.3 percent each. In total, 17 states had unemployment rates lower than the U.S. figure of 4.3 percent, 8 states and the District had higher rates, and 25 states had rates that were not appreciably different from that of the nation.



Economic Growth Region (EGR) 6

Blackford, Delaware, Fayette, Henry, Jay, Randolph, Rush, Union, and Wayne Counties

Unemployment Rates by State (seasonally adjusted): March 2026

U.S. - 4.3%

Illinois - 5.1%

Indiana - 3.3%

Kentucky - 4.2%

Michigan - 5%

Ohio - 4.1%

Source: U.S. Department of Labor, Bureau of Labor Statistics

Unemployment Rank by County (of 92 counties): March 2026

#9 - Delaware (4.1%)

#14 - Blackford (4%)

#15 - Fayette (4%)

#27 - Wayne (3.6%)

#33 - Henry (3.5%)

#36 - Rush (3.5%)

#55 - Jay (3.3%)

#59 - Randolph (3.3%)

#92 - Union (2.6%)

Source: Indiana Department of Workforce Development, Research and Development, Local Area Unemployment Statistics

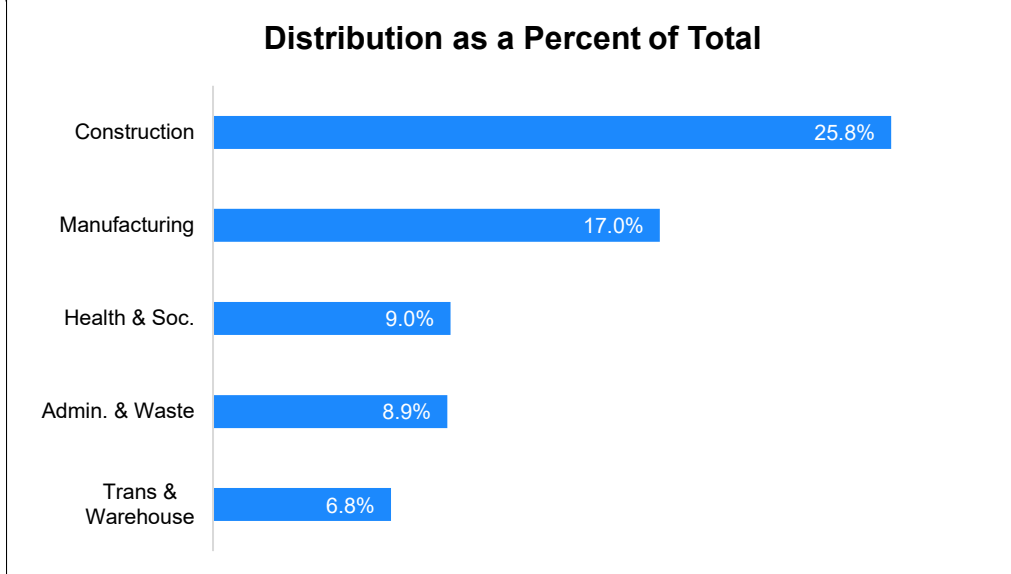
March 2026 Labor Force Estimates (not seasonally adjusted)						
Area	Labor Force	Employed	Unemployed	Mar-26	Feb-26	Mar-25
U.S.	170,102,000	162,764,000	7,337,000	4.3%	4.7%	4.2%
IN	3,470,481	3,346,967	123,514	3.6%	3.8%	3.8%
EGR 6	155,024	149,231	5,793	3.7%	4.0%	4.0%
Muncie MSA	52,771	50,586	2,185	4.1%	4.3%	4.2%
Blackford Co.	5,086	4,884	202	4.0%	4.4%	4.5%
Delaware Co.	52,771	50,586	2,185	4.1%	4.3%	4.2%
Fayette Co.	10,172	9,768	404	4.0%	4.2%	4.4%
Henry Co.	22,388	21,606	782	3.5%	3.8%	4.0%
Jay Co.	9,253	8,952	301	3.3%	3.5%	3.5%
Randolph Co.	12,180	11,773	407	3.3%	3.9%	4.1%
Rush Co.	8,312	8,025	287	3.5%	3.7%	3.3%
Union Co.	4,067	3,961	106	2.6%	3.0%	2.5%
Wayne Co.	30,795	29,676	1,119	3.6%	3.9%	4.0%
Connersville	5,541	5,311	230	4.2%	4.5%	4.9%
Muncie	29,956	28,597	1,359	4.5%	4.6%	4.6%
New Castle	8,228	7,954	274	3.3%	3.5%	3.8%
Richmond	15,520	14,922	598	3.9%	4.1%	4.4%

Source: Indiana Department of Workforce Development, Research & Analysis, Local Area Unemployment Statistics | Unemployment Statistics Released: 05/26 | Notes: The data displayed are presented as estimates only. The most recent month's data are always preliminary and are revised when the next month's data are released.

Consumer Price Index (CPI-U Change), Unadjusted Percent Change to March 2026 from				
CPI Item	Mar-25	Feb-26	Mar-25	Feb-26
	U.S. City		Midwest Region*	
All Items	3.3%	1.0%	3.4%	0.9%
Food & Beverages	2.6%	0.1%	2.3%	0.0%
Housing	3.4%	0.4%	4.0%	-0.1%
Apparel	3.4%	1.8%	3.6%	0.9%
Transportation	5.0%	5.1%	3.8%	5.4%
Medical Care	3.1%	-0.1%	3.9%	0.1%
Recreation	2.2%	-0.1%	4.3%	0.5%
Education & Communication	0.0%	0.1%	-0.2%	0.0%
Other Goods & Services	3.8%	-0.3%	2.3%	0.7%

*Midwest region = Midwest Urban Average. Midwest Region includes Illinois, Indiana, Iowa, Kansas, Michigan, Minnesota, Missouri, Nebraska, North Dakota, Ohio, South Dakota and Wisconsin | Source: U.S. Bureau of Labor Statistics

Percentage of Unemployment Claims for Top 5 Region 6 Industries March 2026



Source: Indiana Department of Workforce Development, Research and Analysis

WARN Notices

WARN Notices for Region 6 for March 2026				
Company	City	County	# of workers affected	Notice Date

There are no WARN Notices for March 2026 for EGR 6.

Source: Indiana Department of Workforce Development, WARN Notices | For information on WARN Act requirements, you may go to the U.S. Department of Labor Employment Training Administration Fact Sheet:

<https://www.doleta.gov/programs/factsht/warn.htm>

Unemployment Claims: March 2026

Region 6

Initial Claims

03/07/26 - 82(D)

03/14/26 - 89(D)

03/21/26 - 81(D)

03/28/26 - 59(D)

Continued Claims

03/07/26 - 906

03/14/26 - 857

03/21/26 - 809

03/28/26 - 760

Total Claims

03/07/26 - 988

03/14/26 - 946

03/21/26 - 890

03/28/26 - 819

State of Indiana

Initial Claims

03/07/26 - 2,586

03/14/26 - 2,608

03/21/26 - 2,418

03/28/26 - 2,279

Continued Claims

03/07/26 - 23,875

03/14/26 - 22,954

03/21/26 - 21,974

03/28/26 - 20,972

Total Claims

03/07/26 - 26,461

03/14/26 - 25,562

03/21/26 - 24,392

03/28/26 - 23,251

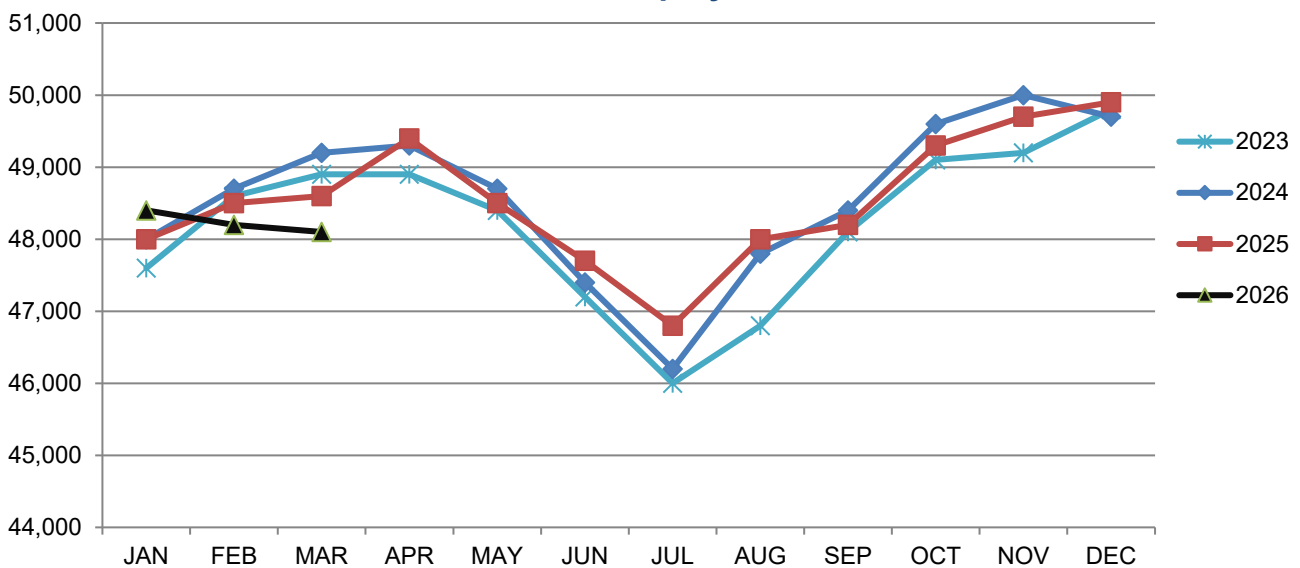
(D) indicates item is affected by non-disclosure issues relating to industry or ownership status |

Source: Indiana Department of Workforce Development, Research and Development

Muncie MSA							
Wage and Salaried Employment	March 2026			# Change	% Change	# Change	% Change
Industry	Mar-26	Feb-26	Mar-25	Feb-26 to Mar-26		Mar-25 to Mar-26	
Total Nonfarm	48,100	48,200	48,600	-100	-0.2%	-500	-1.0%
Total Private	38,000	38,000	38,100	0	0.0%	-100	-0.3%
Goods Producing	5,800	5,800	5,500	0	0.0%	300	5.5%
Service-Providing	42,300	42,400	43,100	-100	-0.2%	-800	-1.9%
Private Service Providing	32,200	32,200	32,600	0	0.0%	-400	-1.2%
Mining, Logging and Construction	1,600	1,600	1,500	0	0.0%	100	6.7%
Manufacturing	4,200	4,200	4,000	0	0.0%	200	5.0%
Trade, Transportation, and Utilities	8,000	8,000	8,200	0	0.0%	-200	-2.4%
Wholesale Trade	1,300	1,300	1,300	0	0.0%	0	0.0%
Retail Trade	5,700	5,700	5,800	0	0.0%	-100	-1.7%
Transportation, Warehousing, and Utilities	1,000	1,000	1,100	0	0.0%	-100	-9.1%
Information	300	300	400	0	0.0%	-100	-25.0%
Financial Activities	2,300	2,300	2,400	0	0.0%	-100	-4.2%
Education and Health Services	10,200	10,200	10,100	0	0.0%	100	1.0%
Leisure and Hospitality	5,000	5,000	5,200	0	0.0%	-200	-3.9%
Other Services	2,200	2,200	2,100	0	0.0%	100	4.8%
Government	10,100	10,200	10,500	-100	-1.0%	-400	-3.8%
State Government	6,400	6,400	6,500	0	0.0%	-100	-1.5%
State Government Educational Services	6,200	6,200	6,300	0	0.0%	-100	-1.6%
State Government Excluding Education	200	200	200	0	0.0%	0	0.0%
Local Government	3,700	3,800	3,700	-100	-2.6%	0	0.0%
Local Government Educational Services	2,100	2,200	2,100	-100	-4.6%	0	0.0%
Local Government excluding Educational Services	1,600	1,600	1,600	0	0.0%	0	0.0%

Source: Indiana Dept of Workforce Development, Research and Analysis, Current Employment Statistics

Muncie MSA Employment Trends



Source: Indiana Department of Workforce Development, Research & Analysis, Current Employment Statistics | Note: Historical data for the most recent 4 years (both seasonally adjusted and not seasonally adjusted) are revised near the beginning of each calendar year, prior to the release of January estimates for statewide data.

Frequently Listed Jobs	
Top 20 job listings by number of postings in Region 6 in the past month	
Rank	Occupations
1	Physicians
2	Driver/Sales Workers and Truck Drivers
3	Registered Nurses
4	Retail Salespersons
5	First-Line Supervisors of Sales Workers
6	Home Health and Personal Care Aides
7	Licensed Practical and Licensed Vocational Nurses
8	Building Cleaning Workers
9	Laborers and Material Movers
10	Therapists
11	Nursing Assistants, Orderlies, and Psychiatric Aides
12	Food Service Managers
13	Miscellaneous Healthcare Support Occupations
14	Maintenance and Repair Workers, General
15	Food Preparation Workers
16	Miscellaneous Production Workers
17	Medical and Health Services Managers
18	Health Practitioner Support Technologists and Technicians
19	Customer Service Representatives
20	Counselors

Source: Lightcast

Applicant Pool	
Top 20 occupations desired by applicants on their resumes in the past 12 months	
Occupations	# of applicants
Production Workers, All Other	229
Assemblers and Fabricators, All Other	141
Customer Service Representatives	110
Helpers--Production Workers	86
Cashiers	77
Laborers and Freight, Stock, and Material Movers, Hand	71
Office Clerks, General	68
Office and Administrative Support Workers, All Other	46
Team Assemblers	44
Managers, All Other	39
Retail Salespersons	38
Heavy and Tractor-Trailer Truck Drivers	37
Extraction Workers, All Other	35
Inspectors, Testers, Sorters, Samplers, and Weighers	34
Industrial Truck and Tractor Operators	32
Construction Laborers	31
Janitors and Cleaners, Except Maids and Housekeeping Cleaners	29
Waiters and Waitresses	29
First-Line Supervisors of Production and Operating Workers	28
Welders, Cutters, Solderers, and Brazers	26

Source: Indiana Workforce Development, Indiana Career Connect

SNAPSHOT

March Indiana Employment

Released May 6, 2026



Unemployment Rate

*seasonally adjusted

Unemployment Rate

3.3%



February 2026 Indiana

3.3%



National Unemployment Rate



LABOR FORCE PARTICIPATION RATE*

16+: **63.3%**

25-44: **83.9%**

25-54: **83.5%**



National Labor Force



Open Job Postings

98,050

Jobs

As of March 29, 2026



Weekly UI Continued Claims

20,972

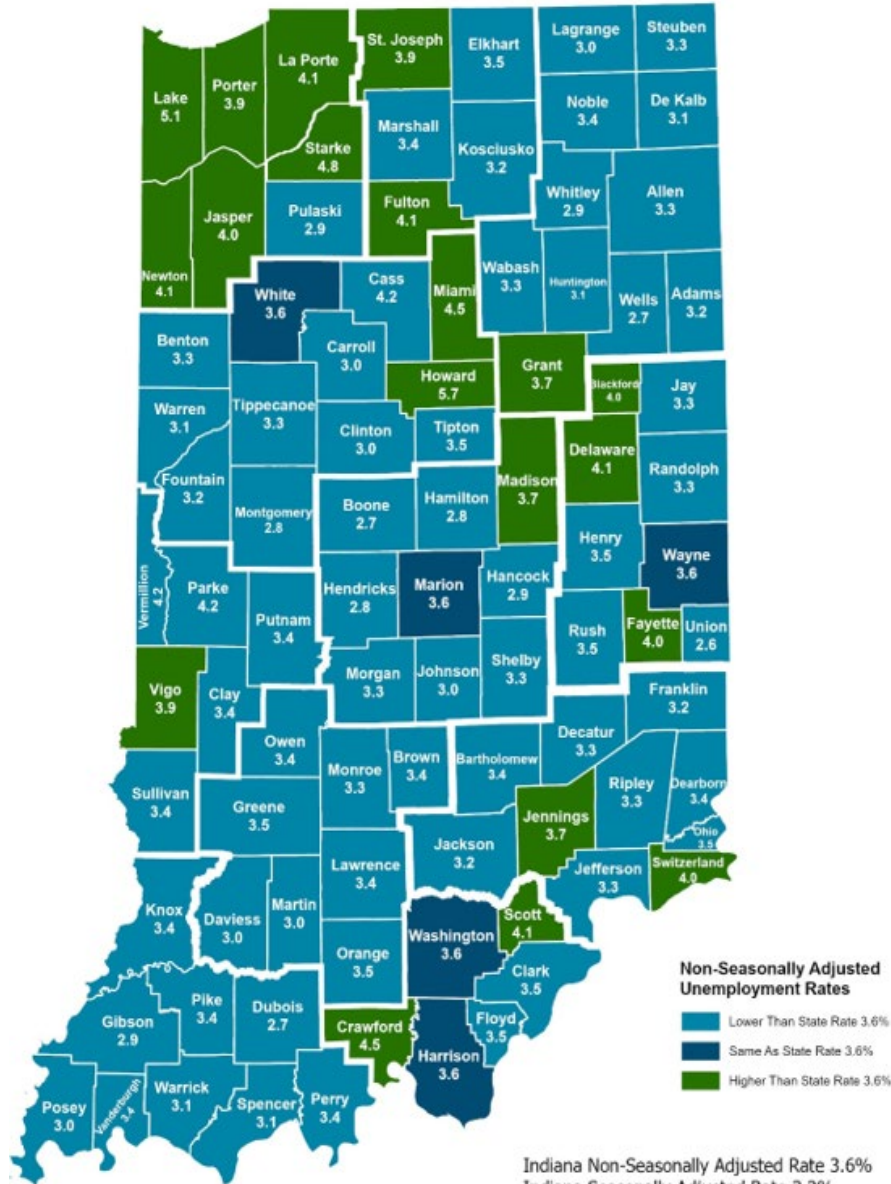


Filed Week Ending April 4, 2026

Source: Local Area Unemployment Statistics, Bureau of Labor Statistics; Indiana Career Connect

* The percentage of Hoosiers 16 and older who are either working or actively looking for work. Those not in the labor force include primarily, students, retirees and other non-working populations, such as individuals unable to work due to a disability or illness, or adults responsible for their family's childcare needs.

County Unemployment Rates March 2026



Indiana Non-Seasonally Adjusted Rate 3.6%
 Indiana Seasonally Adjusted Rate 3.3%
 Source: DWD, Local Area Unemployment Statistics



Questions?

Please contact the
Regional Labor Analyst
listed below:

Cassie Janes

[Indiana Department of
Workforce Development](http://www.IndianaDepartmentofWorkforceDevelopment.gov)

cjanes@dwd.in.gov