



## June 2025 Labor Market Review

Reported by: Jillian A Gregory

Regional Workforce Analyst

[Email Jillian](mailto:jgregory@dwd.in.gov)

[jgregory@dwd.in.gov](mailto:jgregory@dwd.in.gov)

## LABOR MARKET REVIEW

# Economic Growth Regions 5 & 12

Statistical Data Report for June 2025, Released August 2025

## State Employment and Unemployment

Unemployment rates were lower in June in 2 states, higher in 1 state, and stable in 47 states and the District of Columbia, the U.S. Bureau of Labor Statistics reported. Nineteen states and the district had jobless rate increases from a year earlier, 4 states had decreases, and 27 states had little change. The national unemployment rate, 4.1 percent, changed little over the month and was the same as in June 2024.

In June 2025, nonfarm payroll employment increased in 1 state and was essentially unchanged in 49 states and the District of Columbia. Over the year, nonfarm payroll employment increased in 15 states and was essentially unchanged in 35 states and the district.

June 2025 Labor Force Estimates (not seasonally adjusted)						
Area	Labor Force	Employed	Unemployed	Jun-25	May-25	Jun-24
U.S.	171,343,000	163,883,000	7,460,000	4.4%	4.0%	4.3%
IN	3,540,325	3,408,667	131,658	3.7%	3.4%	4.4%
EGR 5	1,153,514	1,113,440	40,074	3.5%	3.2%	4.1%
Indpls-Carmel MSA	1,169,784	1,129,117	40,667	3.5%	3.2%	4.1%
Boone Co.	42,799	41,537	1,262	2.9%	2.7%	3.6%
Hamilton Co.	213,047	206,525	6,522	3.1%	2.8%	3.6%
Hancock Co.	48,469	46,947	1,522	3.1%	2.9%	3.7%
Hendricks Co.	105,349	102,094	3,255	3.1%	2.9%	3.8%
Johnson Co.	90,693	87,804	2,889	3.2%	2.9%	3.8%
Madison Co.	65,762	63,326	2,436	3.7%	3.4%	4.4%
Marion Co.	525,281	505,177	20,104	3.8%	3.4%	4.5%
Morgan Co.	38,227	36,930	1,297	3.4%	3.2%	4.1%
Shelby Co.	23,887	23,100	787	3.3%	3.0%	4.0%
Anderson	25,723	24,615	1,108	4.3%	3.9%	4.9%
Carmel	58,313	56,513	1,800	3.1%	2.8%	3.6%
Fishers	60,297	58,528	1,769	2.9%	2.7%	3.6%
Greenfield	14,458	14,010	448	3.1%	3.0%	3.8%
Greenwood	36,365	35,245	1,120	3.1%	2.9%	3.8%
Indianapolis	480,674	462,110	18,564	3.9%	3.5%	4.5%
Lawrence	28,519	27,544	975	3.4%	3.0%	4.0%
Lebanon	9,941	9,629	312	3.1%	2.8%	3.7%
Noblesville	42,086	40,786	1,300	3.0%	2.8%	3.6%
Plainfield	19,286	18,628	658	3.4%	3.2%	4.1%
Shelbyville	10,746	10,371	375	3.5%	3.2%	4.0%
Westfield	33,431	32,440	991	3.0%	2.7%	3.5%
Zionsville	17,487	16,973	514	2.9%	2.6%	3.7%

Source: Indiana Department of Workforce Development, Research & Analysis, Local Area Unemployment Statistics | Unemployment Statistics Released: 07/25

Notes: The data displayed are presented as estimates only. The most recent month's data are always preliminary and are revised when the next month's data are released.



## Economic Growth Regions (EGR) 5 & 12

**EGR 5:** Boone, Hamilton, Hancock, Hendricks, Johnson, Madison, Marion, Morgan, and Shelby counties

**EGR 12:** Marion County

## Unemployment Rates by State (seasonally adjusted): June 2025

**U.S. - 4.1%**

Illinois - 4.6%

**Indiana - 3.6%**

Kentucky - 4.9%

Michigan - 5.3%

Ohio - 4.9%

Source: U.S. Department of Labor, Bureau of Labor Statistics

## Unemployment Rank by County (of 92 counties): June 2025

#25 - Marion (3.8%)

#34 - Madison (3.7%)

#57 - Morgan (3.4%)

#71 - Shelby (3.3%)

#76 - Johnson (3.2%)

#82 - Hamilton (3.1%)

#83 - Hancock (3.1%)

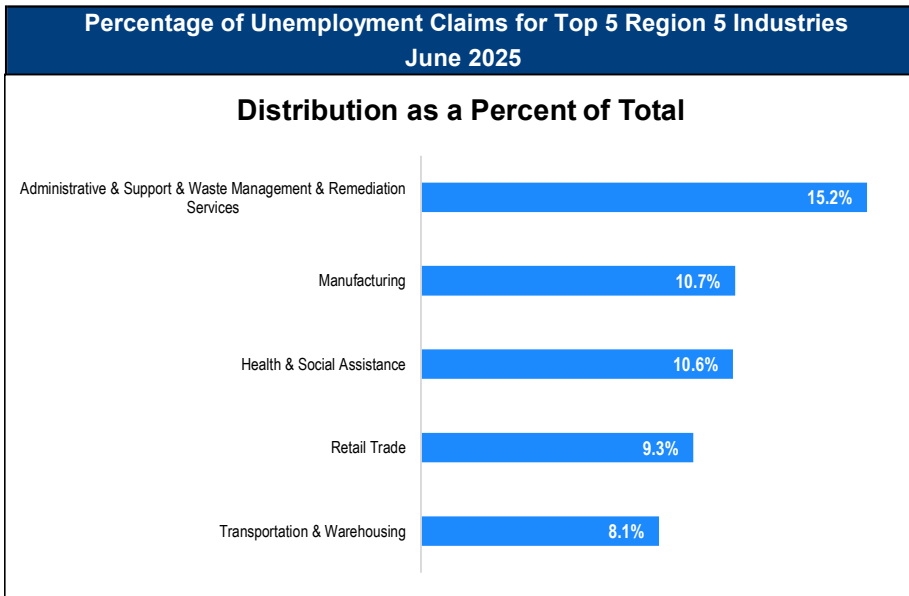
#84 - Hendricks (3.1%)

#90 - Boone (2.9%)

Source: Indiana Department of Workforce Development, Research and Development, Local Area Unemployment Statistics

Consumer Price Index (CPI-U Change), Unadjusted Percent Change to June 2025 from				
CPI Item	Jun-25	Apr-25	Jun-25	Apr-25
	U.S. City		Midwest Region*	
All Items	2.7%	0.3%	3.0%	0.7%
Food & Beverages	2.9%	0.3%	3.0%	0.6%
Housing	4.0%	0.5%	5.0%	1.1%
Apparel	-0.5%	-0.3%	0.9%	-0.2%
Transportation	-0.1%	0.2%	-0.6%	0.4%
Medical Care	2.8%	0.5%	2.9%	1.1%
Recreation	2.1%	0.2%	2.9%	0.0%
Education & Communication	0.5%	0.1%	0.5%	0.3%
Other Goods & Services	3.7%	0.4%	3.8%	0.9%

\*Midwest region = Midwest Urban Average. Midwest Region includes Illinois, Indiana, Iowa, Kansas, Michigan, Minnesota, Missouri, Nebraska, North Dakota, Ohio, South Dakota and Wisconsin | Source: U.S. Bureau of Labor Statistics



Source: Indiana Department of Workforce Development, Research and Analysis

WARN Notices for Regions 5 & 12 for June 2025				
Company	City	County	# of workers affected	Notice Date

### There are no WARN Notices for June 2025 in Regions 5 & 12

Source: Indiana Department of Workforce Development, WARN Notices | For information on WARN Act requirements, you may go to the U.S. Department of Labor Employment Training Administration Fact Sheet:

<https://www.doleta.gov/programs/factsh/warn.htm>

### Unemployment Claims: June 2025

#### Region 5

##### Initial Claims

06/07/25 - 795

06/14/25 - 849

06/21/25 - 816

06/28/25 - 759

##### Continued Claims

06/07/25 - 5,652

06/14/25 - 5,617

06/21/25 - 5,482

06/28/25 - 5,544

##### Total Claims

06/07/25 - 6,447

06/14/25 - 6,466

06/21/25 - 6,298

06/28/25 - 6,303

#### State of Indiana

##### Initial Claims

06/07/25 - 3,454

06/14/25 - 2,707

06/21/25 - 2,436

06/28/25 - 2,502

##### Continued Claims

06/07/25 - 20,541

06/14/25 - 20,394

06/21/25 - 20,787

06/28/25 - 20,545

##### Total Claims

06/07/25 - 23,995

06/14/25 - 23,101

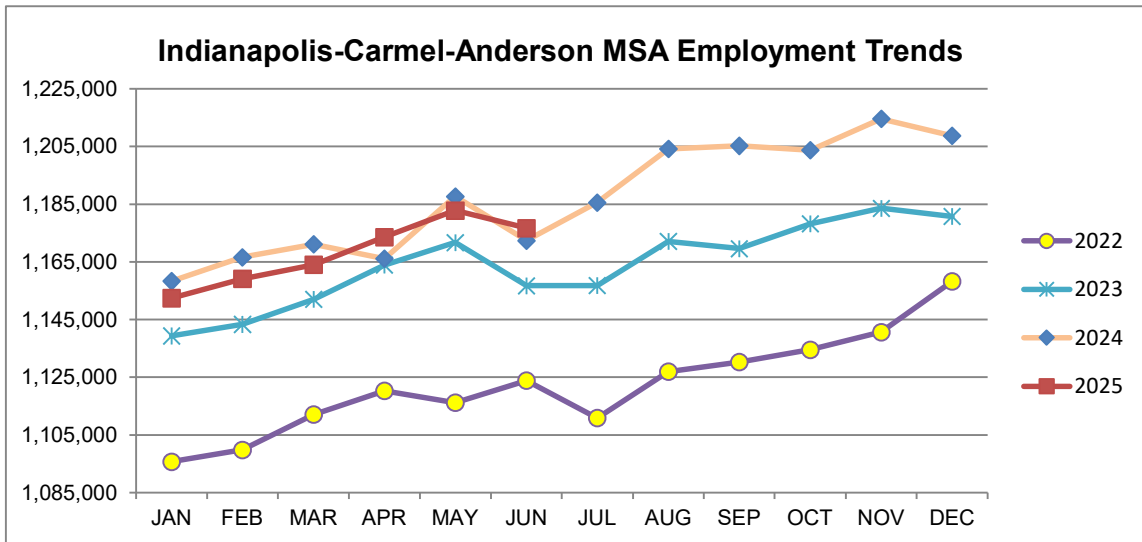
06/21/25 - 23,223

06/28/25 - 23,047

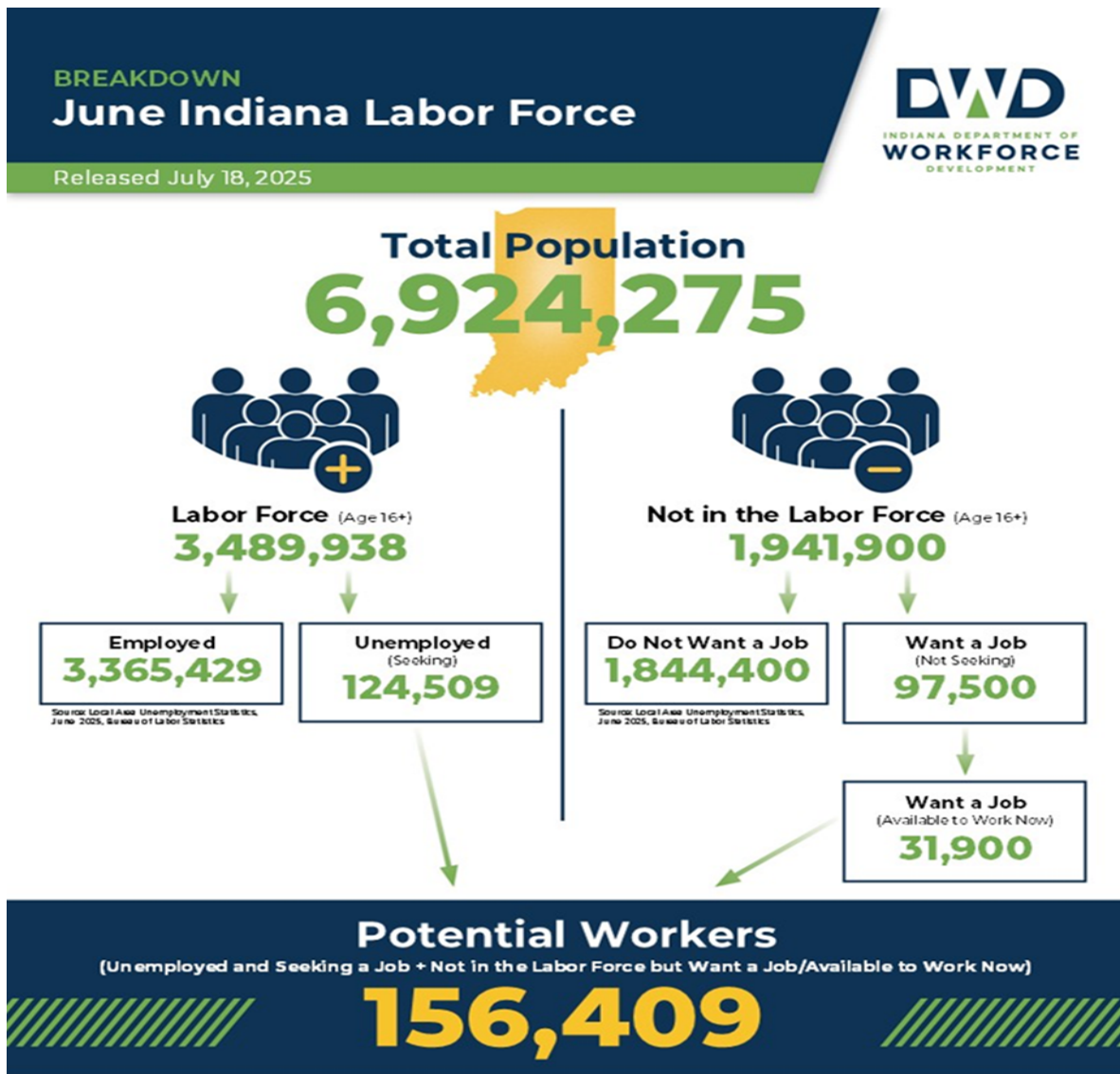
(D) indicates item is affected by non-disclosure issues relating to industry or ownership status. \*Numbers subject to weekly revision. Source: Indiana Department of Workforce Development

Indianapolis-Carmel-Anderson MSA							
Wage and Salaried Employment	June 2025			# Change	% Change	# Change	% Change
Industry	Jun-25	May-25	Jun-24	May-25 to Jun-25		Jun-24 to Jun-25	
<b>Total Nonfarm</b>	<b>1,176,700</b>	<b>1,182,800</b>	<b>1,172,400</b>	<b>-6,100</b>	<b>-0.5%</b>	<b>4,300</b>	<b>0.4%</b>
<b>Total Private</b>	<b>1,034,700</b>	<b>1,033,800</b>	<b>1,036,300</b>	<b>900</b>	<b>0.1%</b>	<b>-1,600</b>	<b>-0.2%</b>
Goods Producing	167,400	165,500	165,600	1,900	1.2%	1,800	1.1%
Service-Providing	1,009,300	1,017,300	1,006,800	-8,000	-0.8%	2,500	0.3%
Private Service Providing	867,300	868,300	870,700	-1,000	-0.1%	-3,400	-0.4%
Mining and Logging	700	700	700	0	0.0%	0	0.0%
Mining, Logging and Construction	69,200	68,000	68,800	1,200	1.8%	400	0.6%
Construction	68,500	67,300	68,100	1,200	1.8%	400	0.6%
Specialty Trade Contractors	42,600	41,800	42,500	800	1.9%	100	0.2%
Manufacturing	98,200	97,500	96,800	700	0.7%	1,400	1.5%
Durable Goods	51,400	51,300	51,800	100	0.2%	-400	-0.8%
Transportation Equipment Manufacturing	14,200	14,200	14,300	0	0.0%	-100	-0.7%
Motor Vehicle Parts Manufacturing	9,500	9,500	9,500	0	0.0%	0	0.0%
Non-Durable Goods	46,800	46,200	45,000	600	1.3%	1,800	4.0%
Chemical Manufacturing	20,900	20,600	19,800	300	1.5%	1,100	5.6%
Trade, Transportation, and Utilities	247,200	246,600	245,300	600	0.2%	1,900	0.8%
Wholesale Trade	56,500	56,300	55,700	200	0.4%	800	1.4%
Merchant Wholesalers, Durable Goods	37,100	36,900	36,100	200	0.5%	1,000	2.8%
Retail Trade	99,900	99,200	100,400	700	0.7%	-500	-0.5%
General Merchandise Stores	23,800	23,700	24,400	100	0.4%	-600	-2.5%
Department Stores	4,100	4,100	4,300	0	0.0%	-200	-4.7%
Other General Merchandise Stores	19,700	19,600	20,100	100	0.5%	-400	-2.0%
Transportation, Warehousing, and Utilities	90,800	91,100	89,200	-300	-0.3%	1,600	1.8%
Transportation and Warehousing	87,800	88,100	85,900	-300	-0.3%	1,900	2.2%
Information	11,100	11,100	11,700	0	0.0%	-600	-5.1%
Telecommunications	2,400	2,400	2,600	0	0.0%	-200	-7.7%
Financial Activities	74,600	75,400	75,300	-800	-1.1%	-700	-0.9%
Finance and Insurance	57,400	57,700	58,300	-300	-0.5%	-900	-1.5%
Insurance Carriers and Related Activities	36,300	36,400	36,900	-100	-0.3%	-600	-1.6%
Insurance Carriers	19,100	19,100	19,600	0	0.0%	-500	-2.6%
Professional and Business Services	182,500	185,900	184,800	-3,400	-1.8%	-2,300	-1.2%
Professional, Scientific, and Technical Services	84,900	84,900	82,600	0	0.0%	2,300	2.8%
Management of Companies and Enterprises	15,300	15,200	15,200	100	0.7%	100	0.7%
Administrative and Support and Waste Management and Remediation Services	82,300	85,800	87,000	-3,500	-4.1%	-4,700	-5.4%
Administrative and Support Services	78,200	81,700	82,600	-3,500	-4.3%	-4,400	-5.3%
Employment Services	40,500	41,800	40,100	-1,300	-3.1%	400	1.0%
Education and Health Services	186,700	187,200	187,000	-500	-0.3%	-300	-0.2%
Educational Services	20,200	20,500	20,400	-300	-1.5%	-200	-1.0%
Health Care and Social Assistance	166,500	166,700	166,600	-200	-0.1%	-100	-0.1%
Ambulatory Health Care Services	75,700	75,000	74,500	700	0.9%	1,200	1.6%
Hospitals	44,700	44,300	43,900	400	0.9%	800	1.8%
Leisure and Hospitality	115,500	113,200	115,900	2,300	2.0%	-400	-0.4%
Accommodation and Food Services	94,100	92,900	94,800	1,200	1.3%	-700	-0.7%
Food Services and Drinking Places	85,800	85,100	86,600	700	0.8%	-800	-0.9%
Restaurants and Other Eating Places	77,000	76,300	77,700	700	0.9%	-700	-0.9%
Full-service restaurants	38,000	37,700	37,800	300	0.8%	200	0.5%
Limited-Service Restaurants and Other Eating Places	39,000	38,600	39,900	400	1.0%	-900	-2.3%
Other Services	49,700	48,900	50,700	800	1.6%	-1,000	-2.0%
<b>Total Government</b>	<b>142,000</b>	<b>149,000</b>	<b>136,100</b>	<b>-7,000</b>	<b>-4.7%</b>	<b>5,900</b>	<b>4.3%</b>
Federal Government	20,300	20,500	19,500	-200	-1.0%	800	4.1%
State Government	35,600	35,800	36,400	-200	-0.6%	-800	-2.2%
Local Government	86,100	92,700	80,200	-6,600	-7.1%	5,900	7.4%
Local Government Educational Services	35,200	45,800	34,400	-10,600	-23.1%	800	2.3%

Source: Indiana Dept of Workforce Development, Research and Analysis, Current Employment Statistics



Source: Indiana Department of Workforce Development, Research & Analysis, Current Employment Statistics | Note: Historical data for the most recent 4 years (both seasonally adjusted and not seasonally adjusted) are revised near the beginning of each calendar year, prior to the release of January estimates for statewide data.



More about the US Bureau of Labor Statistics data sources used within:  
 Local Area Unemployment Statistics (LAUS) captures Indiana's labor force which includes those currently employed and those who are unemployed and actively seeking work.  
 Current Population Survey (CPS) captures individuals not participating in Indiana's labor force. This set includes non-participants that do not want a job (i.e. retirees and students) and those that want a job but are not actively seeking work.  
 U.S. Census Bureau, Indiana Population 2024.

Resource: Notes on Using Current Population Survey (CPS) Subnational Data and Differences Between CPS and LAUS Estimates



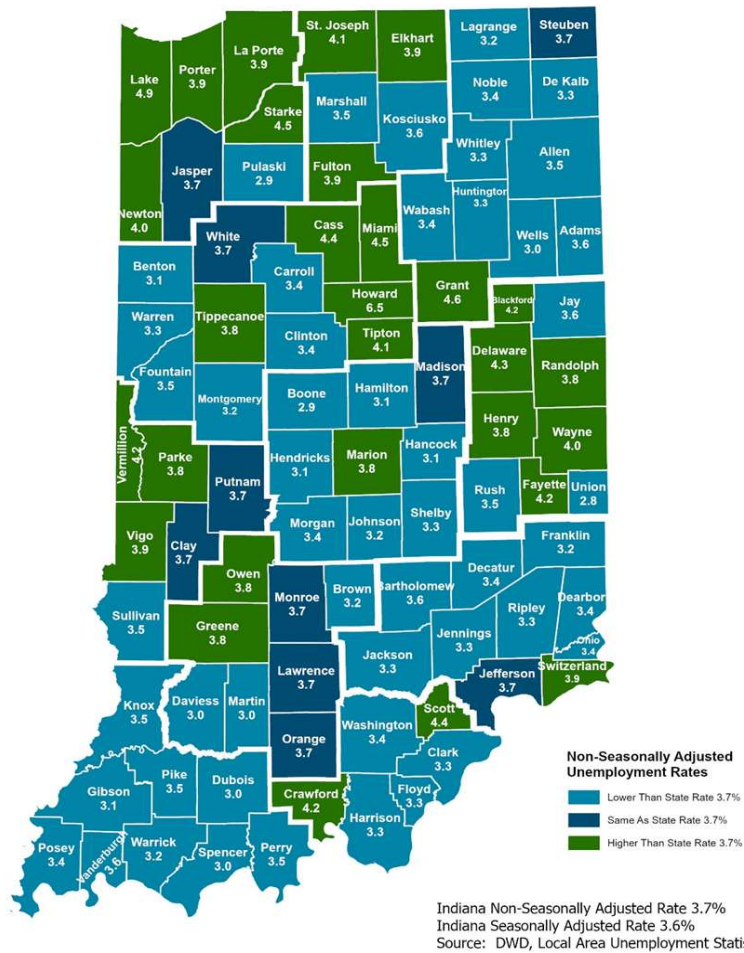
Frequently Listed Jobs	
Top 20 job listings by number of openings in Region 5 in the past month	
Rank	Occupations
1	Production Workers, All Other
2	Customer Service Representatives
3	Animal Caretakers
4	Industrial Truck and Tractor Operators
5	Laborers and Freight, Stock, and Material Movers, Hand
6	Retail Salespersons
7	Credit Analysts
8	First-Line Supervisors of Production and Operating Workers
9	Shipping, Receiving, and Inventory Clerks
10	Crane and Tower Operators
11	Nursing Assistants
12	Office Clerks, General
13	Quality Control Analysts
14	Retail Loss Prevention Specialists
15	Software Developers
16	Business Operations Specialists, All Other
17	Civil Engineers
18	Financial Managers
19	Heavy and Tractor-Trailer Truck Drivers
20	Human Resources Specialists

Source: Indiana Workforce Development, Indiana Career Connect. \* Due to an upgrade in the reporting system, there is a notable change in Job Postings recorded. The tool used to measure Job Postings was upgraded to prevent malicious or false postings. While customers adjust to the enhancements a drop in the record is to be expected.

Applicant Pool	
Top 20 occupations desired by applicants on their resumes in the past 12 months	
Occupations	# of applicants
Human Resources Specialists	265
Maintenance and Repair Workers, General	262
Accountants and Auditors	262
Sales and Related Workers, All Other	244
Landscaping and Groundskeeping Workers	242
Carpenters	234
Healthcare Support Workers, All Other	233
Maids and Housekeeping Cleaners	230
Light Truck or Delivery Services Drivers	229
Food Preparation Workers	220
Electrical and Electronic Equipment Assemblers	217
First-Line Supervisors of Retail Sales Workers	215
Sales Representatives, Wholesale and Manufacturing, Except Technical and Scientific Products	212
Driver/Sales Workers	209
Marketing Managers	205
Inspectors, Testers, Sorters, Samplers, and Weighers	193
Transportation, Storage, and Distribution Managers	192
Bill and Account Collectors	192
Welders, Cutters, Solderers, and Brazers	191
Billing and Posting Clerks	188

Source: Indiana Workforce Development, Indiana Career Connect

## County Unemployment Rates June 2025



### Questions?

Please contact the DWD  
Research and Analysis  
Regional Labor Analyst  
listed below:

**Jillian A Gregory**

Regional Labor Analyst

Research and Analysis

[Indiana Department of  
Workforce Development](https://www.in.gov/dwd/)

[jgregory@dwd.in.gov](mailto:jgregory@dwd.in.gov)