



April 2025 Labor Market Review

Reported by: Alex Corn, MPA

Regional Workforce Analyst
[Email Alex](#)
dcorn@dwd.in.gov



HOOSIERS BY THE NUMBERS

Your premier source for labor market information for Indiana.



INDIANA DEPARTMENT OF
WORKFORCE
DEVELOPMENT

LABOR MARKET REVIEW

Economic Growth Region 5

Statistical Data Report for April 2025, Released June 2025

State Employment and Unemployment

STATE EMPLOYMENT AND UNEMPLOYMENT -- Unemployment rates were higher in April in 3 states and the District of Columbia, lower in 2 states, and stable in 45 states, the U.S. Bureau of Labor Statistics reported. Twenty-six states and the District had jobless rate increases from a year earlier, 1 state had a decrease, and 23 states had little change. The national unemployment rate was unchanged at 4.2 percent but was 0.3 percentage point higher than in April 2024.

Source: Indiana Department of Workforce Development

April 2025 Labor Force Estimates (not seasonally adjusted)						
Area	Labor Force	Employed	Unemployed	Apr-25	Mar-25	Apr-24
U.S.	170,622,000	164,043,000	6,580,000	3.9%	4.2%	3.5%
IN	3,476,454	3,373,288	103,166	3.0%	3.4%	3.6%
EGR 5	1,134,568	1,103,857	30,711	2.7%	3.1%	3.3%
Indpls-Carmel-Grnwd MSA	1,150,436	1,119,245	31,191	2.7%	3.1%	3.3%
Boone Co.	41,988	41,059	929	2.2%	2.6%	2.8%
Hamilton Co.	209,441	204,699	4,742	2.3%	2.6%	2.8%
Hancock Co.	47,775	46,586	1,189	2.5%	2.8%	2.9%
Hendricks Co.	103,667	101,250	2,417	2.3%	2.8%	2.9%
Johnson Co.	89,071	86,918	2,153	2.4%	2.8%	3.0%
Madison Co.	64,666	62,733	1,933	3.0%	3.5%	3.5%
Marion Co.	516,997	501,253	15,744	3.0%	3.5%	3.6%
Morgan Co.	37,568	36,562	1,006	2.7%	3.3%	3.3%
Shelby Co.	23,395	22,797	598	2.6%	3.0%	3.1%
Anderson	25,260	24,385	875	3.5%	4.1%	3.9%
Carmel	57,266	56,013	1,253	2.2%	2.6%	2.7%
Fishers	59,342	58,011	1,331	2.2%	2.5%	2.8%
Greenfield	14,267	13,902	365	2.6%	3.0%	2.9%
Greenwood	35,725	34,890	835	2.3%	2.8%	3.1%
Indianapolis	473,087	458,521	14,566	3.1%	3.5%	3.7%
Lawrence	28,097	27,330	767	2.7%	3.1%	3.3%
Lebanon	9,736	9,518	218	2.2%	2.7%	3.0%
Noblesville	41,398	40,425	973	3.0%	2.8%	2.8%
Plainfield	18,979	18,474	505	2.7%	3.1%	3.3%
Shelbyville	10,515	10,235	280	2.7%	3.1%	2.9%
Westfield	32,854	32,153	701	2.1%	2.5%	2.6%
Zionsville	17,120	16,777	343	2.0%	2.3%	2.7%

Source: Indiana Department of Workforce Development, Research & Analysis, Local Area Unemployment Statistics | Unemployment Statistics Released:05/25

Notes: The data displayed are presented as estimates only. The most recent month's data are always preliminary and are revised when the next month's data are released.



Economic Growth Region (EGR) 5

Boone, Hamilton, Hancock, Hendricks, Johnson, Madison, Marion, Morgan, and Shelby counties

Unemployment Rates by State (seasonally adjusted): April 2025

U.S. - 4.2%

Illinois - 4.8%

Indiana - 3.9%

Kentucky - 5.2%

Michigan - 5.5%

Ohio - 4.9%

Source: U.S. Department of Labor, Bureau of Labor Statistics

Unemployment Rank by County (of 92 counties): April 2025

#33 - Madison (3%)

#34 - Marion (3%)

#60 - Morgan (2.7%)

#72 - Shelby (2.6%)

#76 - Hancock (2.5%)

#79 - Johnson (2.4%)

#84 - Hamilton (2.3%)

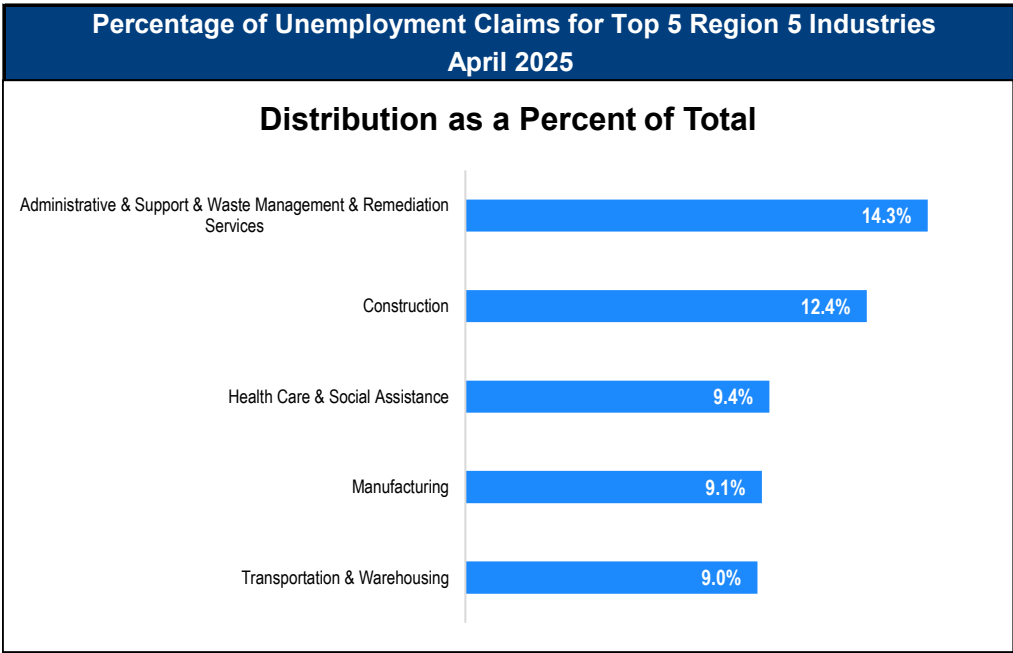
#85 - Hendricks (2.3%)

#87 - Boone (2.2%)

Source: Indiana Department of Workforce Development, Research and Development, Local Area Unemployment Statistics

Consumer Price Index (CPI-U Change), Unadjusted Percent Change to April 2025 from				
CPI Item	Apr-25	Feb-25	Apr-25	Feb-25
	U.S. City		Midwest Region*	
All Items	2.3%	0.3%	2.4%	0.2%
Food & Beverages	2.7%	0.0%	2.4%	-0.2%
Housing	4.0%	0.4%	4.8%	0.2%
Apparel	-0.7%	-1.1%	-0.9%	-2.5%
Transportation	-1.5%	0.9%	-1.7%	0.8%
Medical Care	2.7%	0.4%	1.4%	0.2%
Recreation	1.6%	-0.1%	1.6%	0.0%
Education & Communication	0.2%	-0.2%	0.3%	0.0%
Other Goods & Services	3.6%	0.3%	3.9%	0.8%

*Midwest region = Midwest Urban Average. Midwest Region includes Illinois, Indiana, Iowa, Kansas, Michigan, Minnesota, Missouri, Nebraska, North Dakota, Ohio, South Dakota and Wisconsin | Source: U.S. Bureau of Labor Statistics



Source: Indiana Department of Workforce Development, Research and Analysis

WARN Notices

WARN Notices for Region 5 for April 2025				
Company	City	County	# of workers affected	Notice Date

Source: Indiana Department of Workforce Development, WARN Notices | For information on WARN Act requirements, you may go to the U.S. Department of Labor Employment Training Administration Fact Sheet:

<https://www.doleta.gov/programs/factsht/warn.htm>

Unemployment Claims: April 2025

Region 5

Initial Claims

04/05/25 - 800

04/12/25 - 974

04/19/25 - 781

04/26/25 - 858

Continued Claims

04/05/25 - 3,477

04/12/25 - 3,504

04/19/25 - 3,577

04/26/25 - 3,783

Total Claims

04/05/25 - 4,277

04/12/25 - 4,478

04/19/25 - 4,358

04/26/25 - 4,641

State of Indiana

Initial Claims

04/05/25 - 2,496

04/12/25 - 3,104

04/19/25 - 2,609

04/26/25 - 2,566

Continued Claims

04/05/25 - 22,840

04/12/25 - 22,250

04/19/25 - 21,736

04/26/25 - 21,208

Total Claims

04/05/25 - 25,336

04/12/25 - 25,354

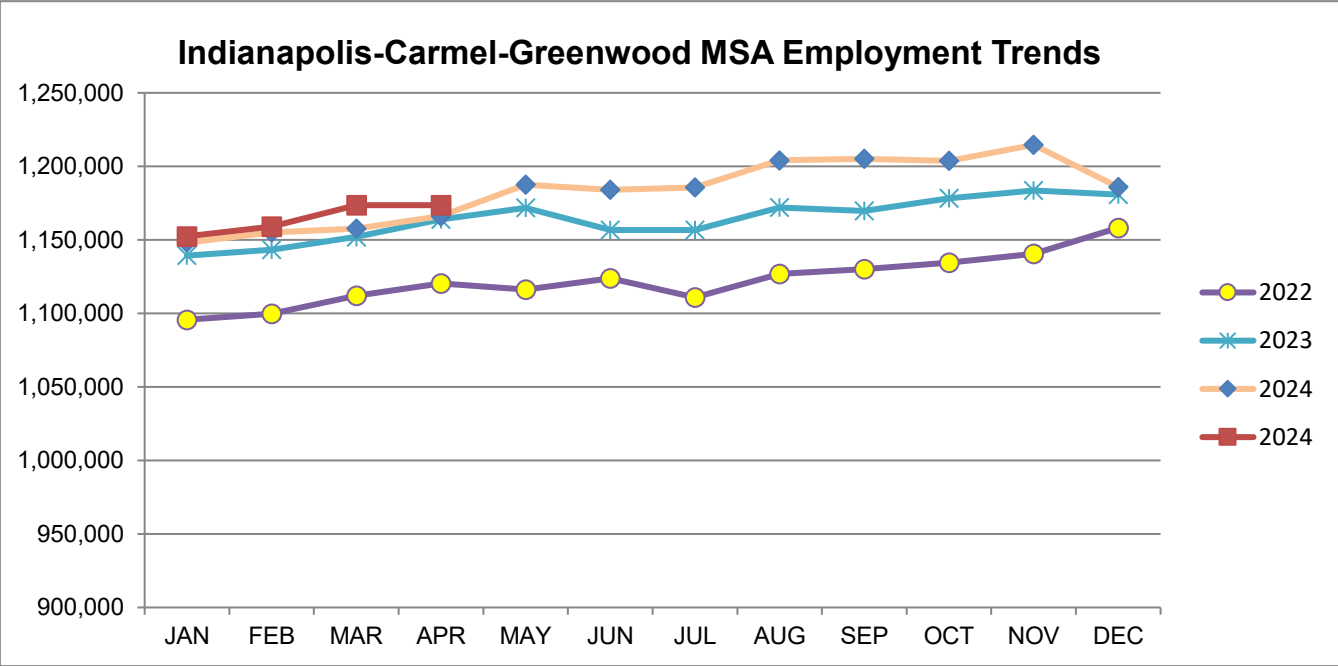
04/19/25 - 24,345

04/26/25 - 23,774

(D) indicates item is affected by non-disclosure issues relating to industry or ownership status *Numbers subject to weekly revision Source: Indiana Department of Workforce Development

Indianapolis-Carmel-Greenwood MSA							
Wage and Salaried Employment	April 2025			# Change	% Change	# Change	% Change
Industry	Apr-25	Mar-25	Apr-24	Mar-25 to Apr-25		Apr-24 to Apr-25	
Total Nonfarm	1,173,600	1,164,000	1,166,100	9,600	0.8%	7,500	0.6%
Total Private	1,024,800	1,016,100	1,021,100	8,700	0.9%	3,700	0.4%
Goods Producing	162,700	161,700	161,300	1,000	0.6%	1,400	0.9%
Service-Providing	1,010,900	1,002,300	1,004,800	8,600	0.9%	6,100	0.6%
Private Service Providing	862,100	854,400	859,800	7,700	0.9%	2,300	0.3%
Mining and Logging	700	600	600	100	16.7%	100	16.7%
Mining, Logging and Construction	66,100	64,900	65,700	1,200	1.9%	400	0.6%
Construction	65,400	64,300	65,100	1,100	1.7%	300	0.5%
Specialty Trade Contractors	40,800	40,300	40,200	500	1.2%	600	1.5%
Manufacturing	96,600	96,800	95,600	-200	-0.2%	1,000	1.1%
Durable Goods	51,200	51,500	51,400	-300	-0.6%	-200	-0.4%
Transportation Equipment Manufacturing	14,200	14,300	14,300	-100	-0.7%	-100	-0.7%
Motor Vehicle Parts Manufacturing	9,500	9,600	9,500	-100	-1.0%	0	0.0%
Non-Durable Goods	45,400	45,300	44,200	100	0.2%	1,200	2.7%
Chemical Manufacturing	20,300	20,200	19,200	100	0.5%	1,100	5.7%
Trade, Transportation, and Utilities	246,000	245,100	243,500	900	0.4%	2,500	1.0%
Wholesale Trade	55,600	55,800	55,100	-200	-0.4%	500	0.9%
Merchant Wholesalers, Durable Goods	36,500	36,700	35,900	-200	-0.5%	600	1.7%
Retail Trade	98,100	98,900	98,900	-800	-0.8%	-800	-0.8%
General Merchandise Stores	23,500	23,700	24,200	-200	-0.8%	-700	-2.9%
Department Stores	4,000	4,100	4,200	-100	-2.4%	-200	-4.8%
Other General Merchandise Stores	19,500	19,600	20,000	-100	-0.5%	-500	-2.5%
Transportation, Warehousing, and Utilities	92,300	90,400	89,500	1,900	2.1%	2,800	3.1%
Transportation and Warehousing	89,200	87,400	86,200	1,800	2.1%	3,000	3.5%
Information	11,100	11,100	11,800	0	0.0%	-700	-5.9%
Telecommunications	2,400	2,400	2,600	0	0.0%	-200	-7.7%
Financial Activities	74,000	74,400	73,800	-400	-0.5%	200	0.3%
Finance and Insurance	57,300	57,400	57,400	-100	-0.2%	-100	-0.2%
Insurance Carriers and Related Activities	36,400	36,400	36,100	0	0.0%	300	0.8%
Insurance Carriers	19,100	19,100	19,300	0	0.0%	-200	-1.0%
Professional and Business Services	185,600	182,600	184,300	3,000	1.6%	1,300	0.7%
Professional, Scientific, and Technical Services	85,300	83,200	82,600	2,100	2.5%	2,700	3.3%
Management of Companies and Enterprises	15,200	15,200	15,000	0	0.0%	200	1.3%
Administrative and Support and Waste Management and Remediation Services	85,100	84,200	86,700	900	1.1%	-1,600	-1.9%
Administrative and Support Services	80,900	80,200	82,500	700	0.9%	-1,600	-1.9%
Employment Services	40,800	40,500	40,800	300	0.7%	0	0.0%
Education and Health Services	186,300	186,000	186,400	300	0.2%	-100	-0.1%
Educational Services	21,900	21,500	22,100	400	1.9%	-200	-0.9%
Health Care and Social Assistance	164,400	164,500	164,300	-100	-0.1%	100	0.1%
Ambulatory Health Care Services	73,800	73,300	74,000	500	0.7%	-200	-0.3%
Hospitals	43,800	43,900	43,300	-100	-0.2%	500	1.2%
Leisure and Hospitality	110,500	106,800	110,500	3,700	3.5%	0	0.0%
Accommodation and Food Services	91,000	88,500	92,200	2,500	2.8%	-1,200	-1.3%
Food Services and Drinking Places	83,400	81,000	84,400	2,400	3.0%	-1,000	-1.2%
Restaurants and Other Eating Places	74,300	72,400	75,800	1,900	2.6%	-1,500	-2.0%
Full-service restaurants	36,600	35,700	36,800	900	2.5%	-200	-0.5%
Limited-Service Restaurants and Other Eating Places	37,700	36,700	39,000	1,000	2.7%	-1,300	-3.3%
Other Services	48,600	48,400	49,500	200	0.4%	-900	-1.8%
Total Government	148,800	147,900	145,000	900	0.6%	3,800	2.6%
Federal Government	20,800	20,400	19,200	400	2.0%	1,600	8.3%
State Government	37,800	37,600	37,800	200	0.5%	0	0.0%
Local Government	90,200	89,900	88,000	300	0.3%	2,200	2.5%
Local Government Educational Services	45,200	45,700	44,500	-500	-1.1%	700	1.6%

Source: Indiana Dept of Workforce Development, Research and Analysis, Current Employment Statistics



Source: Indiana Department of Workforce Development, Research & Analysis, Current Employment Statistics | [Note](#): Historical data for the most recent 4 years (both seasonally adjusted and not seasonally adjusted) are revised near the beginning of each calendar year, prior to the release of January estimates for statewide data.

Frequently Listed Jobs	
Top 20 job listings by number of openings in Region 5 in the past month	
Rank	Occupations
1	Farmworkers and Laborers, Crop, Nursery, and Greenhouse
2	Production Workers, All Other
3	Civil Engineers
4	Electricians
5	First-Line Supervisors of Production and Operating Workers
6	Software Developers
7	Network and Computer Systems Administrators
8	Office Clerks, General
9	Automotive Service Technicians and Mechanics
10	Business Operations Specialists, All Other
11	Cashiers
12	General and Operations Managers
13	Managers, All Other
14	Bus and Truck Mechanics and Diesel Engine Specialists
15	Farmworkers, Farm, Ranch, and Aquacultural Animals
16	Stockers and Order Fillers
17	Computer User Support Specialists
18	Correctional Officers and Jailers
19	Electrical and Electronic Engineering Technologists and Technicians
20	Environmental Engineering Technologists and Technicians

Source: Indiana Workforce Development, Indiana Career Connect. * Due to an upgrade in the reporting system, there is a notable change in Job Postings recorded. The tool used to measure Job Postings was upgraded to prevent malicious or false postings. While customers adjust to the enhancements a drop in the record is to be expected.

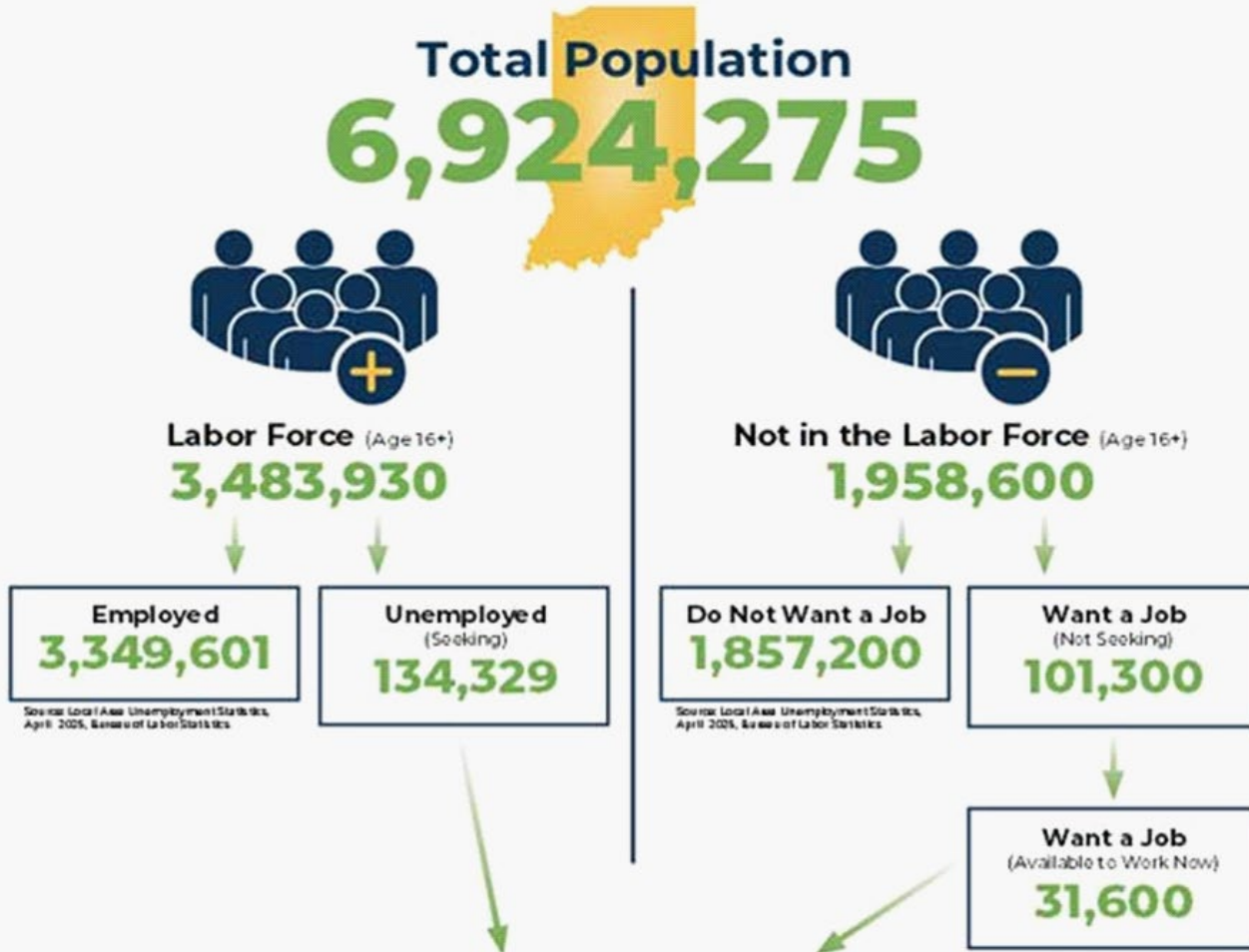
Applicant Pool	
Top 20 occupations desired by applicants on their resumes in the past 12 months	
Occupations	# of applicants
Customer Service Representatives	2,280
Production Workers, All Other	1,392
Laborers and Freight, Stock, and Material Movers, Hand	1,270
Assemblers and Fabricators, All Other	995
Cashiers	985
Helpers--Production Workers	811
Heavy and Tractor-Trailer Truck Drivers	769
Office Clerks, General	700
Managers, All Other	634
Industrial Truck and Tractor Operators	566
Packers and Packagers, Hand	564
Office and Administrative Support Workers, All Other	552
Executive Secretaries and Executive Administrative Assistants	492
Retail Salespersons	466
Shipping, Receiving, and Traffic Clerks	446
Data Entry Keyers	416
General and Operations Managers	414
Receptionists and Information Clerks	394
Sales Managers	366
Construction Laborers	350

Source: Indiana Workforce Development, Indiana Career Connect

BREAKDOWN

April Indiana Labor Force

Released May 21, 2025



Potential Workers

(Unemployed and Seeking a Job + Not in the Labor Force but Want a Job/Available to Work Now)

165,929

More about the U.S. Bureau of Labor Statistics data sources used within:
Local Area Unemployment Statistics (LAUS): Captures Indiana's labor force which includes those currently employed and those who are unemployed and actively seeking work.
Current Population Survey (CPS): Captures individuals not participating in Indiana's labor force. This set includes non-participants that do not want a job (i.e. retirees and students) and those that want a job but are not actively seeking work.
U.S. Census Bureau, Indiana Population 2024.

Resource Note on Using Current Population Survey (CPS) Subnational Data and Differences Between CPS and LAUS Estimates

[illegible]

Alex Corn, MPA
Senior Regional Labor
Analyst

Indiana Department of
Workforce Development
dcorn@dwd.in.gov