



# HOOSIERS BY THE NUMBERS

Your premier source for labor market information for Indiana.



LABOR MARKET REVIEW



January 2025  
Labor Market Review

Reported by: Alex Corn, MPA

Regional Workforce Analyst

[Email Alex](mailto:dcorn@dwd.in.gov)

[dcorn@dwd.in.gov](mailto:dcorn@dwd.in.gov)



## LABOR MARKET REVIEW

# Economic Growth Region 5

Statistical Data Report for January 2025, Released March 2025

### State Employment and Unemployment

STATE EMPLOYMENT AND UNEMPLOYMENT -- The unemployment rate of the State of Indiana in January was recorded to be 4.4%, according to the Indiana Department of Workforce Development. By comparison, the national unemployment rate reported for January was 4.0%. In addition, Indiana's labor force participation rate is 63.8% compared to the national rate of 62.6%. This rate is the percentage of Hoosiers 16 and older that are either working or actively looking for work.

Source: Indiana Department of Workforce Development

#### January 2025 Labor Force Estimates (not seasonally adjusted)

Area	Labor Force	Employed	Unemployed	Jan-25	Dec-24	Jan-24
U.S.	169,814,000	162,347,000	7,467,000	4.4%	3.8%	4.1%
IN	3,473,595	3,318,849	154,746	4.5%	4.0%	4.1%
EGR 5	1,132,344	1,085,911	46,433	4.1%	3.6%	3.7%
Indpls-Carmel-Grnwd MSA	1,148,249	1,101,072	47,177	4.1%	3.7%	3.7%
Boone Co.	41,884	40,401	1,483	3.5%	3.1%	3.2%
Hamilton Co.	208,568	201,363	7,205	3.5%	3.1%	3.1%
Hancock Co.	47,623	45,809	1,814	3.8%	3.3%	3.5%
Hendricks Co.	103,263	99,596	3,667	3.6%	3.2%	3.2%
Johnson Co.	88,956	85,542	3,414	3.8%	3.3%	3.4%
Madison Co.	64,869	61,716	3,153	4.9%	4.0%	4.4%
Marion Co.	516,053	493,056	22,997	4.5%	4.0%	4.0%
Morgan Co.	37,688	35,985	1,703	4.5%	3.7%	4.0%
Shelby Co.	23,440	22,443	997	4.3%	3.6%	3.7%
Anderson	25,357	23,989	1,368	5.4%	4.5%	5.0%
Carmel	57,040	55,101	1,939	3.4%	3.1%	3.0%
Fishers	58,988	57,066	1,922	3.3%	3.0%	3.0%
Greenfield	14,266	13,670	596	4.2%	3.5%	3.6%
Greenwood	35,705	34,337	1,368	3.8%	3.5%	3.5%
Indianapolis	472,175	451,022	21,153	4.5%	4.1%	4.0%
Lawrence	28,031	26,883	1,148	4.1%	3.7%	3.5%
Lebanon	9,763	9,366	397	4.1%	3.5%	3.7%
Noblesville	41,235	39,766	1,469	3.0%	3.2%	3.2%
Plainfield	18,932	18,173	759	4.0%	3.6%	3.6%
Shelbyville	10,524	10,076	448	4.3%	3.6%	3.7%
Westfield	32,724	31,629	1,095	3.3%	3.0%	3.0%
Zionsville	17,056	16,508	548	3.2%	2.8%	2.9%

Source: Indiana Department of Workforce Development, Research & Analysis, Local Area Unemployment Statistics | Unemployment Statistics Released:02/25

Notes: The data displayed are presented as estimates only. The most recent month's data are always preliminary and are revised when the next month's data are released.



### Economic Growth Region (EGR) 5

Boone, Hamilton, Hancock, Hendricks, Johnson, Madison, Marion, Morgan, and Shelby counties

### Unemployment Rates by State (seasonally adjusted): January 2025

**U.S. - 4%**

Illinois - 4.9%

**Indiana - 4.4%**

Kentucky - 5.3%

Michigan - 5.3%

Ohio - 4.6%

Source: U.S. Department of Labor, Bureau of Labor Statistics

### Unemployment Rank by County (of 92 counties): January 2025

#25 - Madison (4.9%)

#43 - Marion (4.5%)

#44 - Morgan (4.5%)

#56 - Shelby (4.3%)

#77 - Hancock (3.8%)

#79 - Johnson (3.8%)

#88 - Hendricks (3.6%)

#89 - Boone (3.5%)

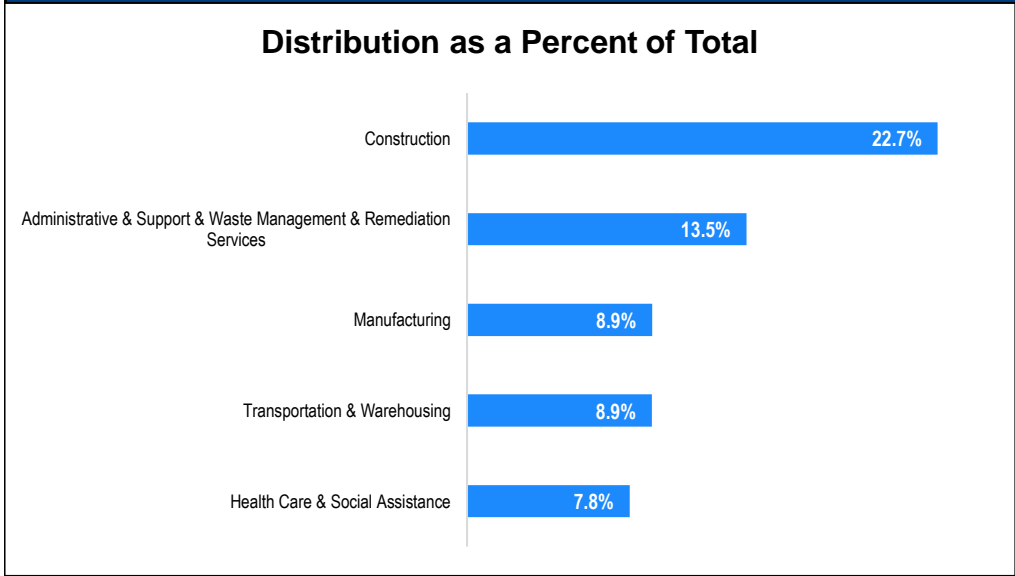
#91 - Hamilton (3.5%)

Source: Indiana Department of Workforce Development, Research and Development, Local Area Unemployment Statistics

Consumer Price Index (CPI-U Change), Unadjusted Percent Change to January 2025 from				
CPI Item	Jan-25	Dec-24	Jan-25	Dec-24
	U.S. City		Midwest Region*	
<b>All Items</b>	<b>3.0%</b>	<b>0.7%</b>	<b>3.4%</b>	<b>0.6%</b>
Food & Beverages	2.4%	0.6%	2.0%	0.8%
Housing	3.9%	0.6%	4.8%	0.5%
Apparel	0.4%	0.9%	1.3%	3.1%
Transportation	3.2%	1.0%	3.6%	0.6%
Medical Care	2.6%	0.5%	2.7%	0.4%
Recreation	1.6%	1.2%	1.4%	0.9%
Education & Communication	0.5%	0.3%	-0.1%	0.6%
Other Goods & Services	2.4%	-0.1%	4.4%	-0.3%

\*Midwest region = Midwest Urban Average. Midwest Region includes Illinois, Indiana, Iowa, Kansas, Michigan, Minnesota, Missouri, Nebraska, North Dakota, Ohio, South Dakota and Wisconsin | Source: U.S. Bureau of Labor Statistics

### Percentage of Unemployment Claims for Top 5 Region 5 Industries January 2025



Source: Indiana Department of Workforce Development, Research and Analysis

### WARN Notices

WARN Notices for Region 5 for January 2025				
Company	City	County	# of workers affected	Notice Date
ABM	Indianapolis	Marion	77	2/28/2025
Phoenix Financial Services	Fishers	Hamilton	94	1/24/2025

**There are no WARN Notices for January 2025 in Region 5**

Source: Indiana Department of Workforce Development, WARN Notices | For information on WARN Act requirements, you may go to the U.S. Department of Labor Employment Training Administration Fact Sheet:

<https://www.doleta.gov/programs/factsht/warn.htm>

### Unemployment Claims: January 2025

#### Region 5

##### Initial Claims

01/04/25 - 1,339  
01/11/25 - 1,376  
01/18/25 - 1,286  
01/25/25 - 1,050

##### Continued Claims

01/04/25 - 3,477  
01/11/25 - 3,504  
01/18/25 - 3,577  
01/25/25 - 3,783

##### Total Claims

01/04/25 - 4,816  
01/11/25 - 4,880  
01/18/25 - 4,863  
01/25/25 - 4,833

#### State of Indiana

##### Initial Claims

01/04/25 - 5,294  
01/11/25 - 5,904  
01/18/25 - 4,591  
01/25/25 - 3,617

##### Continued Claims

01/04/25 - 30,829  
01/11/25 - 29,825  
01/18/25 - 29,956  
01/25/25 - 30,247

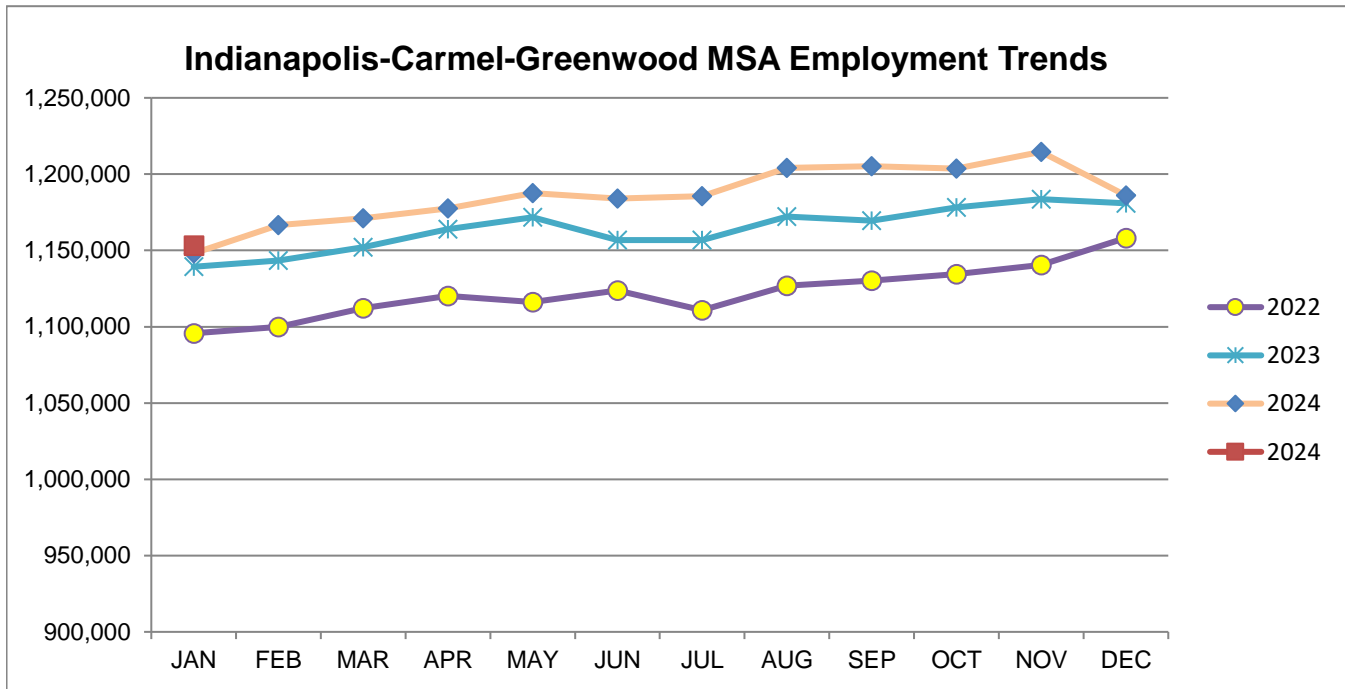
##### Total Claims

01/04/25 - 36,123  
01/11/25 - 35,729  
01/18/25 - 34,547  
01/25/25 - 33,864

(D) indicates item is affected by non-disclosure issues relating to industry or ownership status \*Numbers subject to weekly revision Source: Indiana Department of Workforce Development

Indianapolis-Carmel-Greenwood MSA							
Wage and Salaried Employment	January 2025			# Change	% Change	# Change	% Change
Industry	Jan-25	Dec-24	Jan-24	Dec-24 to Jan-25		Jan-24 to Jan-25	
<b>Total Nonfarm</b>	<b>1,153,200</b>	<b>1,186,000</b>	<b>1,148,100</b>	<b>-32,800</b>	<b>-2.8%</b>	<b>5,100</b>	<b>0.4%</b>
<b>Total Private</b>	<b>1,008,900</b>	<b>1,036,900</b>	<b>1,006,200</b>	<b>-28,000</b>	<b>-2.7%</b>	<b>2,700</b>	<b>0.3%</b>
Goods Producing	158,300	161,600	157,200	-3,300	-2.0%	1,100	0.7%
Service-Providing	994,900	1,024,400	990,900	-29,500	-2.9%	4,000	0.4%
Private Service Providing	850,600	875,300	849,000	-24,700	-2.8%	1,600	0.2%
Mining and Logging	600	700	700	-100	-14.3%	-100	-14.3%
Mining, Logging and Construction	62,900	65,600	61,900	-2,700	-4.1%	1,000	1.6%
Construction	62,300	64,900	61,200	-2,600	-4.0%	1,100	1.8%
Specialty Trade Contractors	39,300	40,900	38,100	-1,600	-3.9%	1,200	3.2%
Manufacturing	95,400	96,000	95,300	-600	-0.6%	100	0.1%
Durable Goods	50,700	51,000	51,200	-300	-0.6%	-500	-1.0%
Transportation Equipment Manufacturing	14,200	14,200	14,300	0	0.0%	-100	-0.7%
Motor Vehicle Parts Manufacturing	9,500	9,500	9,500	0	0.0%	0	0.0%
Non-Durable Goods	44,700	45,000	44,100	-300	-0.7%	600	1.4%
Chemical Manufacturing	19,900	20,000	19,100	-100	-0.5%	800	4.2%
Trade, Transportation, and Utilities	248,000	258,600	246,500	-10,600	-4.1%	1,500	0.6%
Wholesale Trade	55,800	56,000	54,700	-200	-0.4%	1,100	2.0%
Merchant Wholesalers, Durable Goods	36,300	36,200	35,400	100	0.3%	900	2.5%
Retail Trade	99,300	104,400	99,500	-5,100	-4.9%	-200	-0.2%
General Merchandise Stores	24,100	25,900	24,500	-1,800	-7.0%	-400	-1.6%
Department Stores	4,200	5,100	4,500	-900	-17.7%	-300	-6.7%
Other General Merchandise Stores	19,900	20,800	20,000	-900	-4.3%	-100	-0.5%
Transportation, Warehousing, and Utilities	92,900	98,200	92,300	-5,300	-5.4%	600	0.7%
Transportation and Warehousing	89,800	94,900	89,000	-5,100	-5.4%	800	0.9%
Information	11,100	11,500	12,000	-400	-3.5%	-900	-7.5%
Telecommunications	2,400	2,500	2,700	-100	-4.0%	-300	-11.1%
Financial Activities	72,800	74,300	73,900	-1,500	-2.0%	-1,100	-1.5%
Finance and Insurance	57,100	57,900	57,600	-800	-1.4%	-500	-0.9%
Insurance Carriers and Related Activities	36,300	36,700	36,100	-400	-1.1%	200	0.6%
Insurance Carriers	19,100	19,300	19,500	-200	-1.0%	-400	-2.1%
Professional and Business Services	181,100	186,000	181,000	-4,900	-2.6%	100	0.1%
Professional, Scientific, and Technical Services	82,700	82,900	82,000	-200	-0.2%	700	0.9%
Management of Companies and Enterprises	15,200	15,500	14,800	-300	-1.9%	400	2.7%
Administrative and Support and Waste Management and Remediation Services	83,200	87,600	84,200	-4,400	-5.0%	-1,000	-1.2%
Administrative and Support Services	78,800	83,100	80,100	-4,300	-5.2%	-1,300	-1.6%
Employment Services	39,800	43,300	41,100	-3,500	-8.1%	-1,300	-3.2%
Education and Health Services	185,000	187,900	183,200	-2,900	-1.5%	1,800	1.0%
Educational Services	20,200	21,700	21,100	-1,500	-6.9%	-900	-4.3%
Health Care and Social Assistance	164,800	166,200	162,100	-1,400	-0.8%	2,700	1.7%
Ambulatory Health Care Services	73,800	74,600	72,900	-800	-1.1%	900	1.2%
Hospitals	44,000	44,200	43,300	-200	-0.5%	700	1.6%
Leisure and Hospitality	104,400	108,200	104,700	-3,800	-3.5%	-300	-0.3%
Accommodation and Food Services	87,000	90,400	89,000	-3,400	-3.8%	-2,000	-2.3%
Food Services and Drinking Places	79,700	82,800	81,700	-3,100	-3.7%	-2,000	-2.5%
Restaurants and Other Eating Places	71,200	73,800	73,700	-2,600	-3.5%	-2,500	-3.4%
Full-service restaurants	35,200	36,500	35,800	-1,300	-3.6%	-600	-1.7%
Limited-Service Restaurants and Other Eating Places	36,000	37,300	37,900	-1,300	-3.5%	-1,900	-5.0%
Other Services	48,200	48,800	47,700	-600	-1.2%	500	1.1%
<b>Total Government</b>	<b>144,300</b>	<b>149,100</b>	<b>141,900</b>	<b>-4,800</b>	<b>-3.2%</b>	<b>2,400</b>	<b>1.7%</b>
Federal Government	20,100	20,900	18,900	-800	-3.8%	1,200	6.4%
State Government	35,100	37,300	36,000	-2,200	-5.9%	-900	-2.5%
Local Government	89,100	90,900	87,000	-1,800	-2.0%	2,100	2.4%
Local Government Educational Services	44,600	45,300	44,000	-700	-1.6%	600	1.4%

Source: Indiana Dept of Workforce Development, Research and Analysis, Current Employment Statistics



Source: Indiana Department of Workforce Development, Research & Analysis, Current Employment Statistics | Note: Historical data for the most recent 4 years (both seasonally adjusted and not seasonally adjusted) are revised near the beginning of each calendar year, prior to the release of January estimates for statewide data.

Frequently Listed Jobs	
Top 20 job listings by number of openings in Region 5 in the past month	
Rank	Occupations
1	Farmworkers and Laborers, Crop, Nursery, and Greenhouse
2	Landscaping and Groundskeeping Workers
3	Heavy and Tractor-Trailer Truck Drivers
4	Amusement and Recreation Attendants
5	Laborers and Freight, Stock, and Material Movers, Hand
6	Electricians
7	Nursing Assistants
8	Licensed Practical and Licensed Vocational Nurses
9	Maintenance and Repair Workers, General
10	Secondary School Teachers, Except Special and Career/Technical Education
11	First-Line Supervisors of Production and Operating Workers
12	Office Clerks, General
13	Retail Salespersons
14	Data Entry Keyers
15	Registered Nurses
16	Software Developers
17	Stockers and Order Fillers
18	Bus and Truck Mechanics and Diesel Engine Specialists
19	Business Operations Specialists, All Other
20	First-Line Supervisors of Helpers, Laborers, and Material Movers, Hand

Source: Indiana Workforce Development, Indiana Career Connect. \* Due to an upgrade in the reporting system, there is a notable change in Job Postings recorded. The tool used to measure Job Postings was upgraded to prevent malicious or false postings. While customers adjust to the enhancements a drop in the record is to be expected.

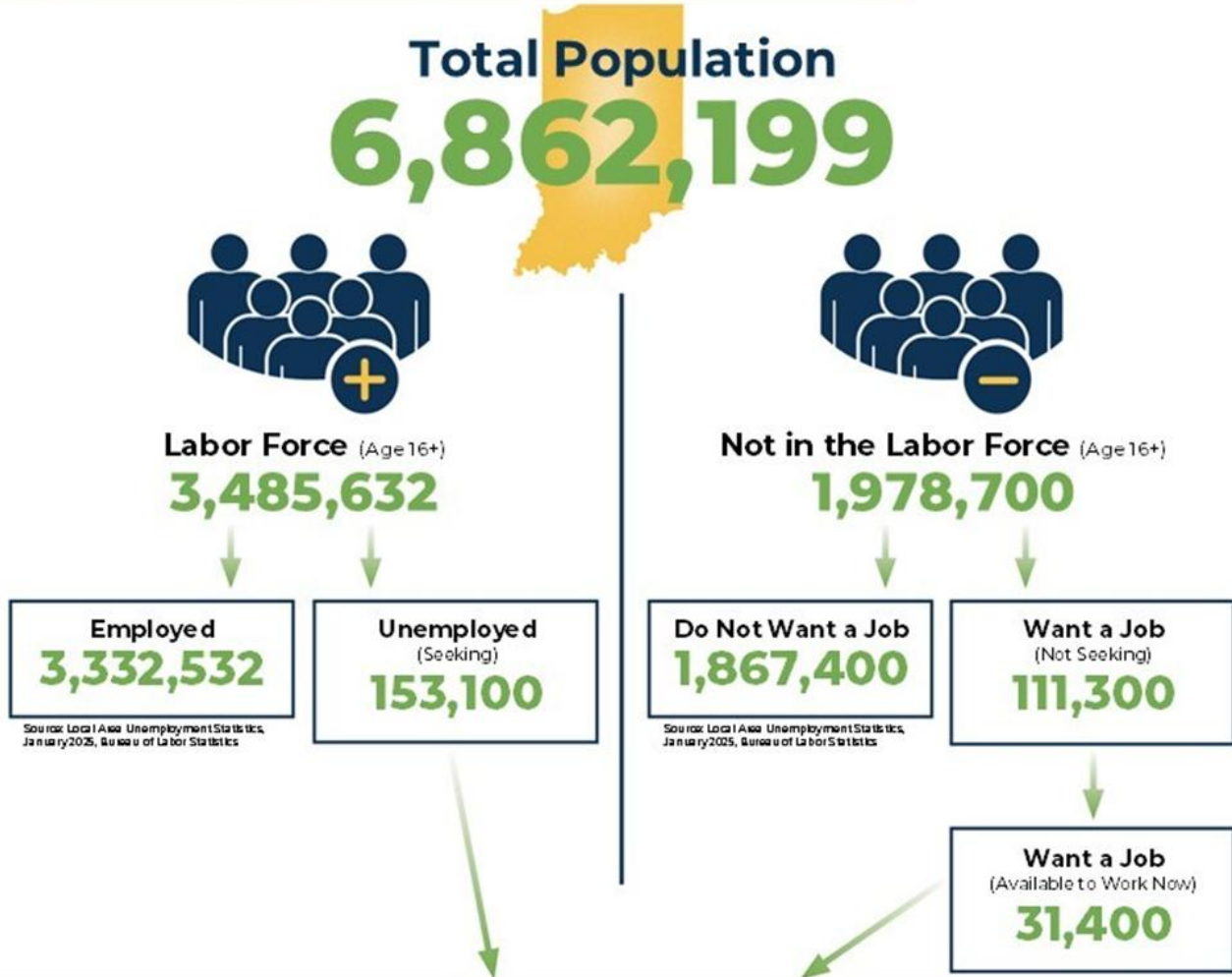
Applicant Pool	
Top 20 occupations desired by applicants on their resumes in the past 12 months	
Occupations	# of applicants
Customer Service Representatives	1,760
Laborers and Freight, Stock, and Material Movers, Hand	819
Production Workers, All Other	632
Heavy and Tractor-Trailer Truck Drivers	628
Cashiers	576
Assemblers and Fabricators, All Other	554
Managers, All Other	492
Office Clerks, General	477
Helpers--Production Workers	406
Industrial Truck and Tractor Operators	367
Executive Secretaries and Executive Administrative Assistants	341
General and Operations Managers	326
Packers and Packagers, Hand	316
Sales Managers	309
Data Entry Keyers	278
Human Resources Specialists	273
Retail Salespersons	271
Medical Assistants	267
Construction Laborers	247
Shipping, Receiving, and Traffic Clerks	246

Source: Indiana Workforce Development, Indiana Career Connect

BREAKDOWN

# January Indiana Labor Force

Released March 17, 2025



## Potential Workers

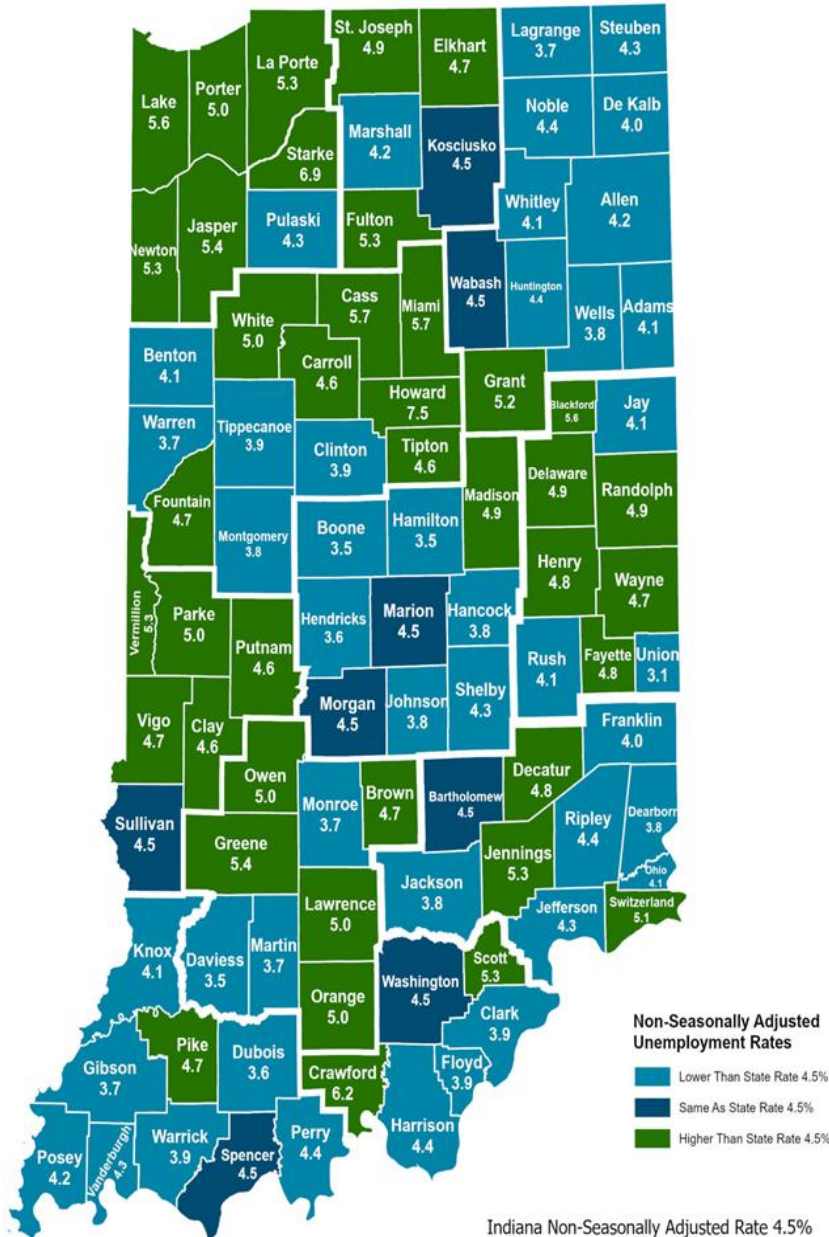
(Unemployed and Seeking a Job + Not in the Labor Force but Want a Job/Available to Work Now)

# 184,500

More about the US Bureau of Labor Statistics data sources used within:  
Local Area Unemployment Statistics (LAUS): Capture Indiana's labor force which includes those currently employed and those who are unemployed and actively seeking work.  
Current Population Survey (CPS): Capture individuals not participating in Indiana's labor force. This set includes non-participants that do not want a job (i.e. retirees and students) and those that want a job, but are not actively seeking work.  
U.S. Census Bureau, Indiana Population 2023.

Resource: Notes on Using Current Population Survey (CPS) Subnational Data and Differences Between CPS and LAUS Estimates

# County Unemployment Rates January 2025



Indiana Non-Seasonally Adjusted Rate 4.5%  
 Indiana Seasonally Adjusted Rate 4.4%  
 Source: DWD, Local Area Unemployment Statistics

## Questions?

Please contact the DWD Research and Analysis Regional Labor Analyst listed below:

**Alex Corn, MPA**  
 Senior Regional Labor Analyst

Research and Analysis

[Indiana Department of Workforce Development](https://www.in.gov/dwd/)

[dcorn@dwd.in.gov](mailto:dcorn@dwd.in.gov)