



December 2024 Labor Market Review

Reported by: Alex Corn, MPA

Regional Workforce Analyst

[Email Alex](#)

dcorn@dwd.in.gov

LABOR MARKET REVIEW

Economic Growth Region 5

Statistical Data Report for December 2024, Released February 2025

State Employment and Unemployment

STATE EMPLOYMENT AND UNEMPLOYMENT -- The unemployment rate of the State of Indiana in December was recorded to be 4.5%, according to the Indiana Department of Workforce Development. By comparison, the national unemployment rate reported for December was 4.1%. In addition, Indiana's labor force participation rate is 63.5% compared to the national rate of 62.5%. This rate is the percentage of Hoosiers 16 and older that are either working or actively looking for work. Those not in the labor force include, primarily, students, retirees and other non-working populations, such as individuals unable to work due to a disability or illness, or adults responsible for their family's childcare needs. Indiana's total labor force stands at 3,451,468 and is at its highest on record. December 2024 total private employment is 2,872,600 a increase of 2,100 from the previous month and 608,300 above the April 2020 Trough.

Source: Indiana Department of Workforce Development

December 2024 Labor Force Estimates (not seasonally adjusted)						
Area	Labor Force	Employed	Unemployed	Dec-24	Nov-24	Dec-23
U.S.	167,746,000	161,294,000	6,452,000	3.8%	4.0%	3.5%
IN	3,439,659	3,301,061	138,598	4.0%	4.2%	2.9%
EGR 5	1,124,705	1,084,199	40,506	3.6%	3.8%	2.6%
Indpls-Carmel MSA	1,150,268	1,108,796	41,472	3.6%	3.8%	2.6%
Boone Co.	39,577	38,365	1,212	3.1%	3.3%	2.1%
Hamilton Co.	202,177	196,012	6,165	3.0%	3.3%	2.1%
Hancock Co.	44,238	42,754	1,484	3.4%	3.6%	2.4%
Hendricks Co.	98,517	95,350	3,167	3.2%	3.4%	2.1%
Johnson Co.	90,037	87,115	2,922	3.2%	3.5%	2.3%
Madison Co.	62,359	59,806	2,553	4.1%	4.2%	3.1%
Marion Co.	524,643	503,845	20,798	4.0%	4.1%	2.8%
Morgan Co.	38,586	37,218	1,368	3.5%	3.7%	2.5%
Shelby Co.	24,571	23,734	837	3.4%	3.6%	2.3%
Anderson	24,510	23,376	1,134	4.6%	4.6%	3.4%
Carmel	58,626	56,863	1,763	3.0%	3.3%	1.9%
Fishers	57,493	55,786	1,707	3.0%	3.1%	2.2%
Greenfield	12,310	11,838	472	3.8%	3.8%	2.8%
Greenwood	33,583	32,400	1,183	3.5%	3.7%	2.5%
Indianapolis	480,730	461,534	19,196	4.0%	4.1%	2.9%
Lawrence	28,648	27,595	1,053	3.7%	3.8%	2.5%
Lebanon	9,295	8,962	333	3.6%	3.7%	2.3%
Noblesville	39,186	37,956	1,230	3.0%	3.3%	2.2%
Plainfield	18,853	18,177	676	3.6%	3.8%	2.4%
Shelbyville	9,926	9,565	361	3.6%	3.9%	2.6%
Westfield	27,178	26,340	838	3.1%	3.5%	2.3%
Zionsville	16,334	15,881	453	2.8%	3.0%	1.9%

Source: Indiana Department of Workforce Development, Research & Analysis, Local Area Unemployment Statistics | Unemployment Statistics Released:01/25

Notes: The data displayed are presented as estimates only. The most recent month's data are always preliminary and are revised when the next month's data are released.



Economic Growth Region (EGR) 5

Boone, Hamilton, Hancock, Hendricks, Johnson, Madison, Marion, Morgan, and Shelby counties

Unemployment Rates by State (seasonally adjusted): December 2024

U.S. - 4.1%

Illinois - 5.2%

Indiana - 4.5%

Kentucky - 5.2%

Michigan - 5%

Ohio - 4.4%

Source: U.S. Department of Labor, Bureau of Labor Statistics

Unemployment Rank by County (of 92 counties): December 2024

#33 - Madison (4.1%)

#38 - Marion (4%)

#68 - Morgan (3.5%)

#71 - Hancock (3.4%)

#72 - Shelby (3.4%)

#78 - Hendricks (3.2%)

#80 - Johnson (3.2%)

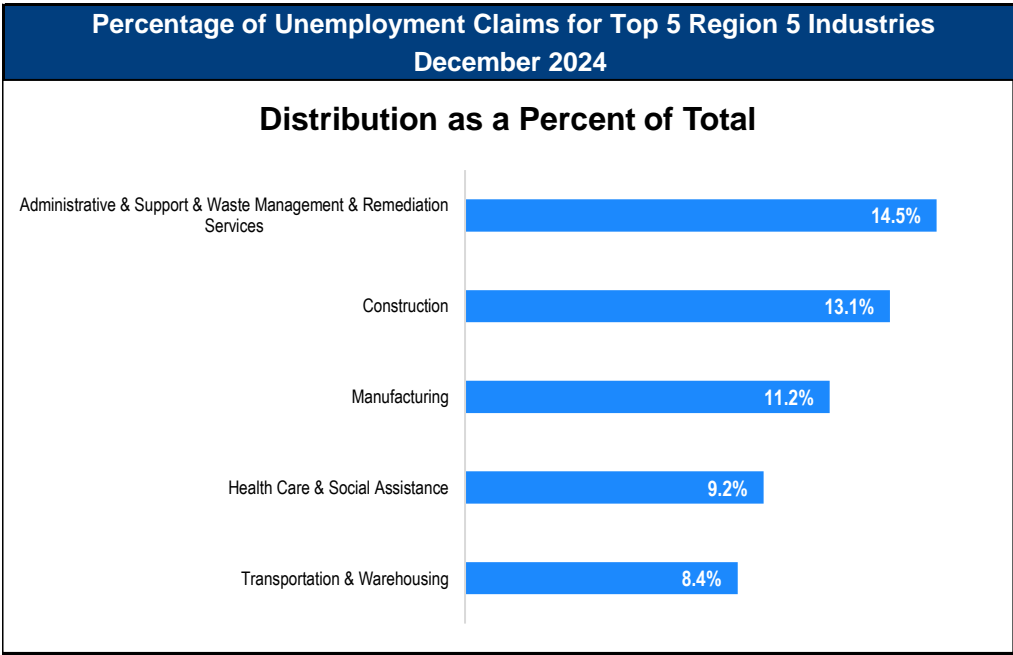
#84 - Boone (3.1%)

#88 - Hamilton (3%)

Source: Indiana Department of Workforce Development, Research and Development, Local Area Unemployment Statistics

Consumer Price Index (CPI-U Change), Unadjusted Percent Change to December 2024 from				
CPI Item	Dec-24	Nov-24	Dec-24	Nov-24
	U.S. City		Midwest Region*	
All Items	2.9%	0.0%	3.0%	0.2%
Food & Beverages	2.4%	0.2%	2.0%	-0.2%
Housing	4.1%	0.2%	4.9%	0.4%
Apparel	1.2%	-1.7%	1.3%	-2.5%
Transportation	1.6%	-0.3%	1.4%	0.3%
Medical Care	2.8%	0.1%	2.3%	0.2%
Recreation	1.1%	0.0%	1.3%	0.1%
Education & Communication	0.6%	-0.1%	-0.2%	0.1%
Other Goods & Services	3.3%	-0.4%	5.0%	-0.4%

*Midwest region = Midwest Urban Average. Midwest Region includes Illinois, Indiana, Iowa, Kansas, Michigan, Minnesota, Missouri, Nebraska, North Dakota, Ohio, South Dakota and Wisconsin | Source: U.S. Bureau of Labor Statistics



Source: Indiana Department of Workforce Development, Research and Analysis

WARN Notices

WARN Notices for Region 5 for December 2024				
Company	City	County	# of workers affected	Notice Date

There are no WARN Notices for December 2024 in Region 5

Source: Indiana Department of Workforce Development, WARN Notices | For information on WARN Act requirements, you may go to the U.S. Department of Labor Employment Training Administration Fact Sheet:

<https://www.doleta.gov/programs/factsht/warn.htm>

Unemployment Claims: December 2024

Region 5

Initial Claims

12/07/24 - 1,088
12/14/24 - 1,070
12/21/24 - 959(D)
12/28/24 - 825

Continued Claims

12/07/24 - 3,477
12/14/24 - 3,504
12/21/24 - 3,577
12/28/24 - 3,783

Total Claims

12/07/24 - 4,565
12/14/24 - 4,574
12/21/24 - 4,536
12/28/24 - 4,608

State of Indiana

Initial Claims

12/07/24 - 5,319
12/14/24 - 3,846
12/21/24 - 3,726
12/28/24 - 3,675

Continued Claims

12/07/24 - 23,610
12/14/24 - 24,094
12/21/24 - 24,631
12/28/24 - 28,033

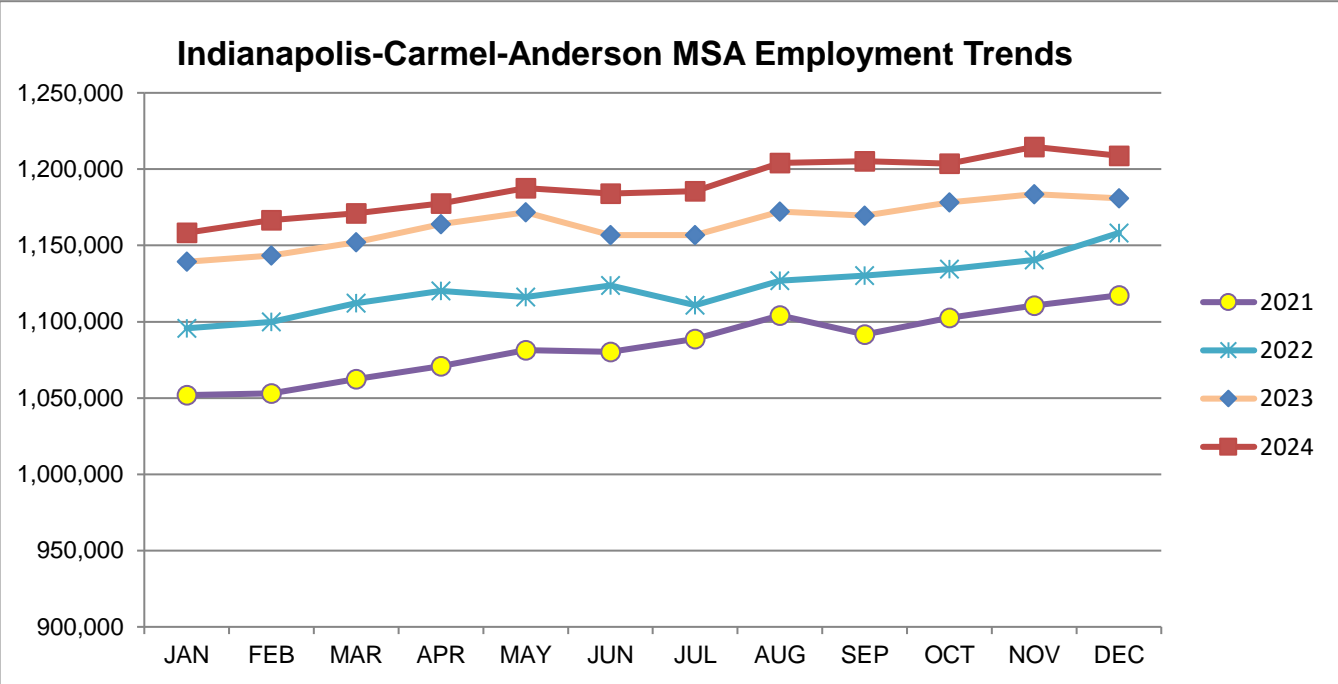
Total Claims

12/07/24 - 28,929
12/14/24 - 27,940
12/21/24 - 28,357
12/28/24 - 31,708

(D) indicates item is affected by non-disclosure issues relating to industry or ownership status *Numbers subject to weekly revision [Source:](#) Indiana Department of Workforce Development

Indianapolis-Carmel-Anderson MSA							
Wage and Salaried Employment	December 2024			# Change	% Change	# Change	% Change
Industry	Dec-24	Nov-24	Dec-23	Nov-24 to Dec-24		Dec-23 to Dec-24	
Total Nonfarm	1,208,700	1,214,600	1,180,800	-5,900	-0.5%	27,900	2.4%
Total Private	1,061,200	1,066,000	1,035,800	-4,800	-0.5%	25,400	2.5%
Goods Producing	165,100	166,300	162,200	-1,200	-0.7%	2,900	1.8%
Service-Providing	1,043,600	1,048,300	1,018,600	-4,700	-0.5%	25,000	2.5%
Private Service Providing	896,100	899,700	873,600	-3,600	-0.4%	22,500	2.6%
Mining and Logging	800	800	800	0	0.0%	0	0.0%
Mining, Logging and Construction	65,300	66,000	63,700	-700	-1.1%	1,600	2.5%
Construction	64,500	65,200	62,900	-700	-1.1%	1,600	2.5%
Specialty Trade Contractors	39,700	40,100	39,100	-400	-1.0%	600	1.5%
Manufacturing	99,800	100,300	98,500	-500	-0.5%	1,300	1.3%
Durable Goods	53,400	53,600	52,900	-200	-0.4%	500	1.0%
Transportation Equipment Manufacturing	14,900	15,000	14,900	-100	-0.7%	0	0.0%
Motor Vehicle Parts Manufacturing	9,900	10,000	10,000	-100	-1.0%	-100	-1.0%
Non-Durable Goods	46,400	46,700	45,600	-300	-0.6%	800	1.8%
Chemical Manufacturing	20,600	20,600	19,600	0	0.0%	1,000	5.1%
Trade, Transportation, and Utilities	257,800	257,200	257,400	600	0.2%	400	0.2%
Wholesale Trade	57,000	57,100	56,600	-100	-0.2%	400	0.7%
Merchant Wholesalers, Durable Goods	37,300	37,300	36,800	0	0.0%	500	1.4%
Retail Trade	104,300	102,600	103,800	1,700	1.7%	500	0.5%
General Merchandise Stores	26,200	25,700	26,200	500	2.0%	0	0.0%
Department Stores	5,300	5,000	5,300	300	6.0%	0	0.0%
Other General Merchandise Stores	20,900	20,700	20,900	200	1.0%	0	0.0%
Transportation, Warehousing, and Utilities	96,500	97,500	97,000	-1,000	-1.0%	-500	-0.5%
Transportation and Warehousing	93,200	94,300	93,600	-1,100	-1.2%	-400	-0.4%
Information	11,900	11,600	12,100	300	2.6%	-200	-1.7%
Telecommunications	2,800	2,700	2,900	100	3.7%	-100	-3.5%
Financial Activities	77,100	76,900	74,800	200	0.3%	2,300	3.1%
Finance and Insurance	58,100	58,100	57,200	0	0.0%	900	1.6%
Insurance Carriers and Related Activities	37,100	37,000	36,100	100	0.3%	1,000	2.8%
Insurance Carriers	20,400	20,400	20,000	0	0.0%	400	2.0%
Professional and Business Services	192,100	194,500	186,900	-2,400	-1.2%	5,200	2.8%
Professional, Scientific, and Technical Services	84,300	84,200	80,500	100	0.1%	3,800	4.7%
Management of Companies and Enterprises	15,200	15,200	14,800	0	0.0%	400	2.7%
Administrative and Support and Waste Management and Remediation Services	92,600	95,100	91,600	-2,500	-2.6%	1,000	1.1%
Administrative and Support Services	89,400	91,600	87,300	-2,200	-2.4%	2,100	2.4%
Employment Services	45,900	46,400	44,700	-500	-1.1%	1,200	2.7%
Education and Health Services	196,300	196,000	189,100	300	0.2%	7,200	3.8%
Educational Services	26,000	26,600	22,900	-600	-2.3%	3,100	13.5%
Health Care and Social Assistance	170,300	169,400	166,200	900	0.5%	4,100	2.5%
Ambulatory Health Care Services	75,400	75,000	72,800	400	0.5%	2,600	3.6%
Hospitals	47,000	46,800	45,800	200	0.4%	1,200	2.6%
Leisure and Hospitality	115,500	117,500	108,600	-2,000	-1.7%	6,900	6.4%
Accommodation and Food Services	94,300	94,400	90,200	-100	-0.1%	4,100	4.6%
Food Services and Drinking Places	85,700	85,400	82,600	300	0.4%	3,100	3.8%
Restaurants and Other Eating Places	77,000	76,900	74,500	100	0.1%	2,500	3.4%
Full-service restaurants	37,000	36,900	35,600	100	0.3%	1,400	3.9%
Limited-Service Restaurants and Other Eating Places	40,000	40,000	38,900	0	0.0%	1,100	2.8%
Other Services	45,400	46,000	44,700	-600	-1.3%	700	1.6%
Total Government	147,500	148,600	145,000	-1,100	-0.7%	2,500	1.7%
Federal Government	20,000	19,800	19,100	200	1.0%	900	4.7%
State Government	36,000	36,600	35,800	-600	-1.6%	200	0.6%
Local Government	91,500	92,200	90,100	-700	-0.8%	1,400	1.6%
Local Government Educational Services	46,500	46,300	45,300	200	0.4%	1,200	2.7%

Source: Indiana Dept of Workforce Development, Research and Analysis, Current Employment Statistics



Source: Indiana Department of Workforce Development, Research & Analysis, Current Employment Statistics | Note: Historical data for the most recent 4 years (both seasonally adjusted and not seasonally adjusted) are revised near the beginning of each calendar year, prior to the release of January estimates for statewide data.

Frequently Listed Jobs	
Top 20 job listings by number of openings in Region 5 in the past month	
Rank	Occupations
1	Landscaping and Groundskeeping Workers
2	Farmworkers and Laborers, Crop, Nursery, and Greenhouse
3	Software Developers
4	Registered Nurses
5	Nursing Assistants
6	Licensed Practical and Licensed Vocational Nurses
7	Agricultural Equipment Operators
8	Computer Systems Analysts
9	First-Line Supervisors of Production and Operating Workers
10	Heavy and Tractor-Trailer Truck Drivers
11	Maintenance and Repair Workers, General
12	Occupational Therapists
13	Laborers and Freight, Stock, and Material Movers, Hand
14	Food Preparation Workers
15	Managers, All Other
16	Physical Therapist Assistants
17	Medical and Health Services Managers
18	Production Workers, All Other
19	Business Operations Specialists, All Other
20	Civil Engineers

Source: Indiana Workforce Development, Indiana Career Connect. * Due to an upgrade in the reporting system, there is a notable change in Job Postings recorded. The tool used to measure Job Postings was upgraded to prevent malicious or false postings. While customers adjust to the enhancements a drop in the record is to be expected.

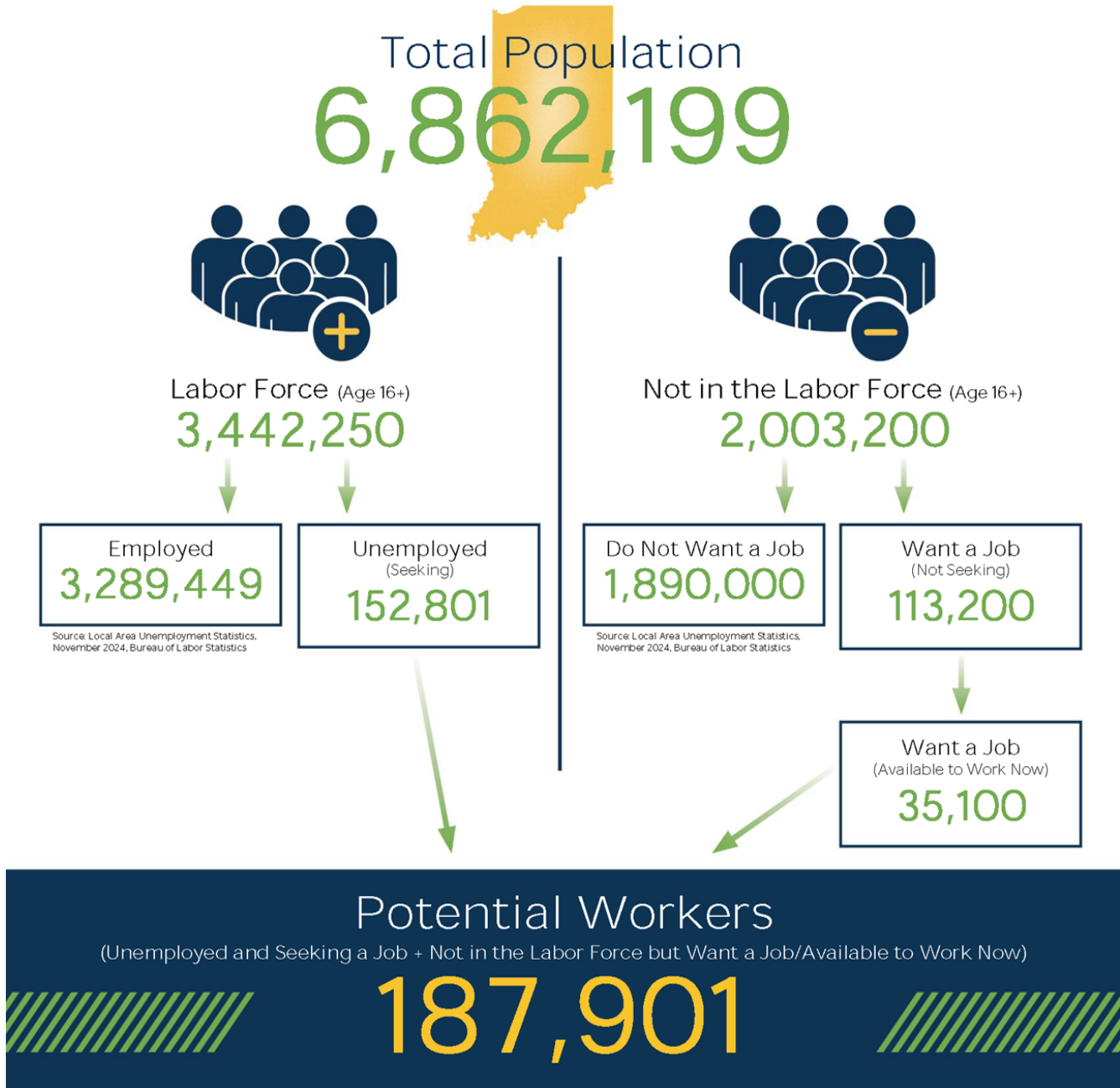
Applicant Pool	
Top 20 occupations desired by applicants on their resumes in the past 12 months	
Occupations	# of applicants
Customer Service Representatives	2,489
Production Workers, All Other	1,508
Laborers and Freight, Stock, and Material Movers, Hand	1,374
Assemblers and Fabricators, All Other	1,114
Cashiers	1,029
Helpers--Production Workers	846
Heavy and Tractor-Trailer Truck Drivers	805
Office Clerks, General	772
Managers, All Other	735
Industrial Truck and Tractor Operators	617
Packers and Packagers, Hand	611
Office and Administrative Support Workers, All Other	571
Executive Secretaries and Executive Administrative Assistants	549
Retail Salespersons	499
General and Operations Managers	473
Receptionists and Information Clerks	455
Data Entry Keyers	446
Shipping, Receiving, and Traffic Clerks	444
Sales Managers	404
Bookkeeping, Accounting, and Auditing Clerks	371

Source: Indiana Workforce Development, Indiana Career Connect

BREAKDOWN

November Indiana Labor Force

Released December 20, 2024



More about the US Bureau of Labor Statistics data sources used within:
Local Area Unemployment Statistics (LAUS): Captures Indiana's labor force, which includes those currently employed and those who are unemployed and actively seeking work.
Current Population Survey (CPS): Captures individuals not participating in Indiana's Labor Force. This set includes non-participants that do not want a job (i.e. retirees and students) and those that want a job, but are not actively seeking work.
U.S. Census Bureau, Indiana Population 2023.

Resource: Notes on Using Current Population Survey (CPS) Subnational Data and Differences Between CPS and LAUS Estimates

County Unemployment Rates December 2024



Questions?

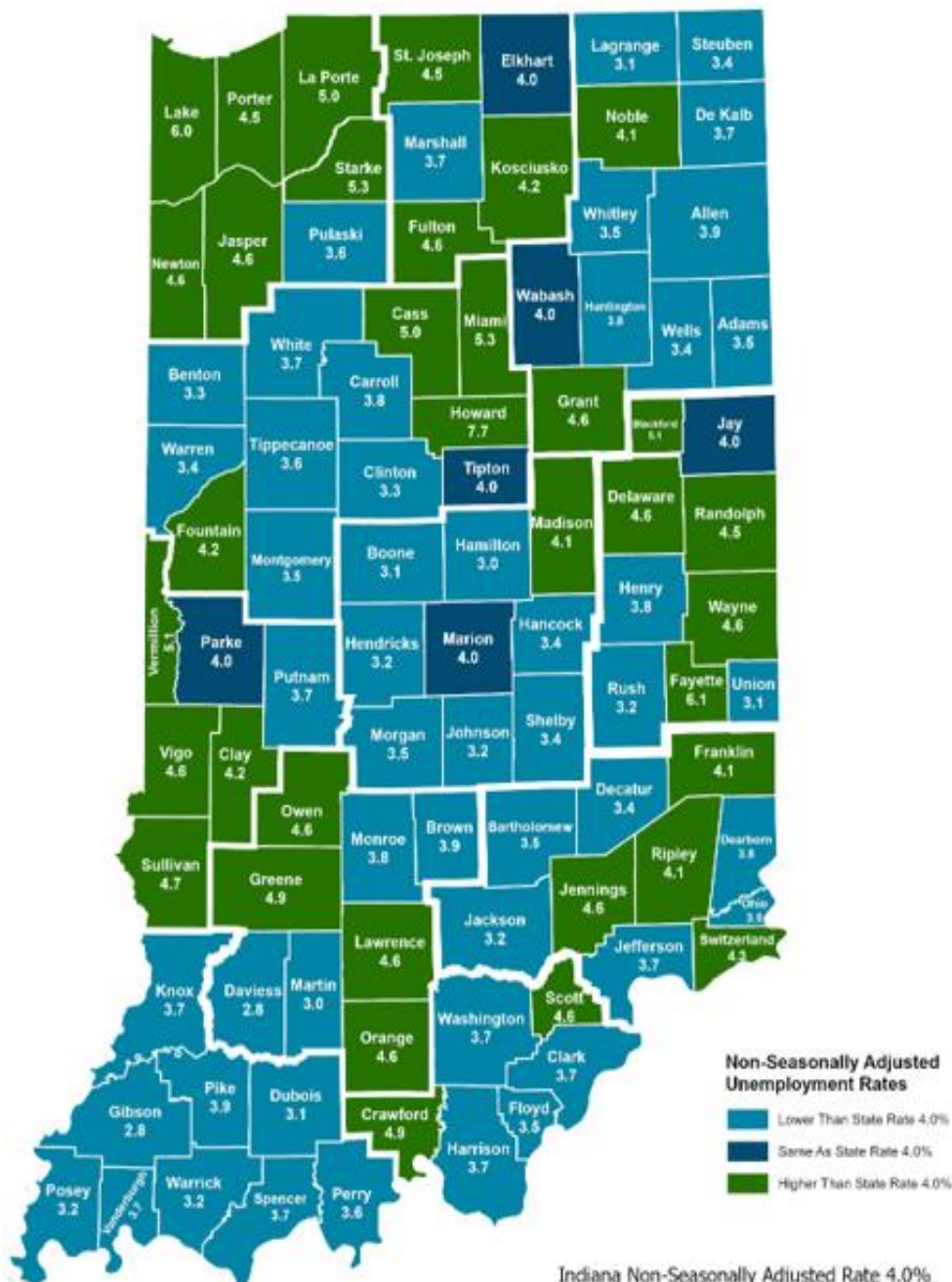
Please contact the DWD
Research and Analysis
Regional Labor Analyst
listed below:

Alex Corn, MPA
Senior Regional Labor
Analyst

Research and Analysis

[Indiana Department of
Workforce Development](https://www.in.gov/dwd/)

dcorn@dwd.in.gov



Indiana Non-Seasonally Adjusted Rate 4.0%
Indiana Seasonally Adjusted Rate 4.5%
Source: DWD, Local Area Unemployment Statistics