



**October 2023  
Labor Market Review**

**Reported by: Mike Petro**

Regional Workforce Analyst

[Email Mike](mailto:gpetro@dwd.in.gov)

[gpetro@dwd.in.gov](mailto:gpetro@dwd.in.gov)

## LABOR MARKET REVIEW

# Economic Growth Region 5

Statistical Data Report for October 2023, Released December 2023

## State Employment and Unemployment

### STATE EMPLOYMENT AND UNEMPLOYMENT -- OCTOBER 2023

Unemployment rates were higher in October in 26 states and stable in 24 states and the District of Columbia, the U.S. Bureau of Labor Statistics reported. Twenty-one states had jobless rate decreases from a year earlier, 12 states and the District had increases, and 17 states had little change. The national unemployment rate, 3.9 percent, changed little both over the month and over the year. Nonfarm payroll employment increased in 1 state and was essentially unchanged in 49 states and the District of Columbia in October. Over the year, nonfarm payroll employment increased in 34 states and was essentially unchanged in 16 states and the District.

Source: Bureau of Labor Statistics

### October 2023 Labor Force Estimates (not seasonally adjusted)

Area	Labor Force	Employed	Unemployed	Oct-23	Sep-23	Oct-22
U.S.	167,774,000	161,676,000	6,098,000	3.6%	3.6%	3.4%
IN	3,415,486	3,304,350	111,136	3.3%	3.3%	3.0%
EGR 5	1,109,689	1,076,737	32,952	3.0%	3.1%	2.7%
Indpls-Carmel MSA	1,135,003	1,101,270	33,733	3.0%	3.1%	2.7%
Boone Co.	39,267	38,226	1,041	2.7%	2.6%	2.2%
Hamilton Co.	199,771	194,631	5,140	2.6%	2.6%	2.3%
Hancock Co.	43,738	42,519	1,219	2.8%	2.9%	2.9%
Hendricks Co.	97,153	94,589	2,564	2.6%	2.8%	2.5%
Johnson Co.	88,953	86,530	2,423	2.7%	2.8%	2.5%
Madison Co.	61,557	59,450	2,107	3.4%	3.5%	3.1%
Marion Co.	516,762	500,123	16,639	3.2%	3.4%	3.0%
Morgan Co.	38,153	37,056	1,097	2.9%	3.0%	2.7%
Shelby Co.	24,335	23,613	722	3.0%	2.8%	2.5%
Anderson	24,170	23,237	933	3.9%	4.1%	3.5%
Carmel	57,952	56,462	1,490	2.6%	2.6%	2.2%
Fishers	56,806	55,393	1,413	2.5%	2.6%	2.2%
Greenfield	12,132	11,773	359	3.0%	3.0%	2.7%
Greenwood	33,146	32,183	963	2.9%	3.0%	2.5%
Indianapolis	473,444	458,124	15,320	3.2%	3.5%	3.0%
Lawrence	28,216	27,391	825	2.9%	3.1%	2.7%
Lebanon	9,208	8,930	278	3.0%	3.0%	2.5%
Noblesville	38,687	37,689	998	2.6%	2.7%	2.3%
Plainfield	18,566	18,032	534	2.9%	2.9%	2.7%
Shelbyville	9,865	9,516	349	3.5%	3.1%	2.6%
Westfield	26,871	26,154	717	2.7%	2.7%	2.3%
Zionsville	16,228	15,824	404	2.5%	2.4%	2.1%

Source: Indiana Department of Workforce Development, Research & Analysis, Local Area Unemployment Statistics | Unemployment Statistics Released:11/23

Notes: The data displayed are presented as estimates only. The most recent month's data are always preliminary and are revised when the next month's data are released.



## Economic Growth Region (EGR) 5

Boone, Hamilton, Hancock, Hendricks, Johnson, Madison, Marion, Morgan, and Shelby counties

## Unemployment Rates by State (seasonally adjusted): October 2023

**U.S. - 3.9%**

Illinois - 4.6%

**Indiana - 3.6%**

Kentucky - 4.2%

Michigan - 4.1%

Ohio - 3.6%

Source: U.S. Department of Labor, Bureau of Labor Statistics

## Unemployment Rank by County (of 92 counties): October 2023

#21 - Madison (3.4%)

#36 - Marion (3.2%)

#57 - Shelby (3%)

#62 - Morgan (2.9%)

#71 - Hancock (2.8%)

#80 - Boone (2.7%)

#82 - Johnson (2.7%)

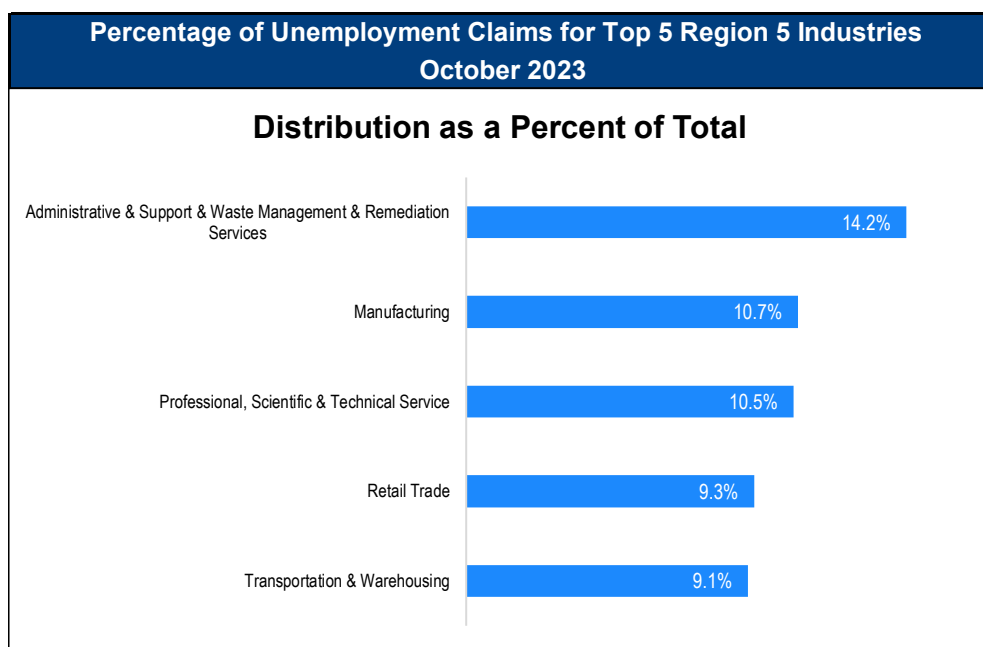
#88 - Hamilton (2.6%)

#89 - Hendricks (2.6%)

Source: Indiana Department of Workforce Development, Research and Development, Local Area Unemployment Statistics

Consumer Price Index (CPI-U Change), Unadjusted Percent Change to October 2023 from				
CPI Item	Oct-22	Sep-23	Oct-22	Sep-23
	U.S. City		Midwest Region*	
All Items	3.2%	0.0%	2.9%	-0.1%
Food & Beverages	3.3%	0.3%	3.2%	0.1%
Housing	5.2%	0.1%	4.8%	0.1%
Apparel	2.6%	-0.3%	3.3%	-0.9%
Transportation	0.8%	-0.9%	0.5%	-1.2%
Medical Care	-0.8%	0.2%	0.2%	0.6%
Recreation	3.2%	0.0%	2.1%	-0.5%
Education & Communication	0.9%	-0.2%	1.4%	0.2%
Other Goods & Services	6.2%	0.6%	7.1%	1.3%

\*Midwest region = Midwest Urban Average. Midwest Region includes Illinois, Indiana, Iowa, Kansas, Michigan, Minnesota, Missouri, Nebraska, North Dakota, Ohio, South Dakota and Wisconsin | Source: U.S. Bureau of Labor Statistics



Source: Indiana Department of Workforce Development, Research and Analysis

## WARN Notices

WARN Notices for Region 5 for October 2023				
Company	City	County	# of workers affected	Notice Date

**There are no WARN Notices for October 2023 in Region 5**

Source: Indiana Department of Workforce Development, WARN Notices | For information on WARN Act requirements, you may go to the U.S. Department of Labor Employment Training Administration Fact Sheet:

<https://www.doleta.gov/programs/factsht/warn.htm>

## Unemployment Claims: October 2023

### Region 5

#### Initial Claims

10/07/23 - 779  
10/14/23 - 670  
10/21/23 - 657  
10/28/23 - 654(D)

#### Continued Claims

10/07/23 - 4,391  
10/14/23 - 4,396  
10/21/23 - 4,361  
10/28/23 - 4,443

#### Total Claims

10/07/23 - 5,170  
10/14/23 - 5,066  
10/21/23 - 5,018  
10/28/23 - 5,097

### State of Indiana

#### Initial Claims

10/07/23 - 3,284  
10/14/23 - 3,023  
10/21/23 - 3,065  
10/28/23 - 2,818

#### Continued Claims

10/07/23 - 19,871  
10/14/23 - 19,825  
10/21/23 - 19,593  
10/28/23 - 20,800

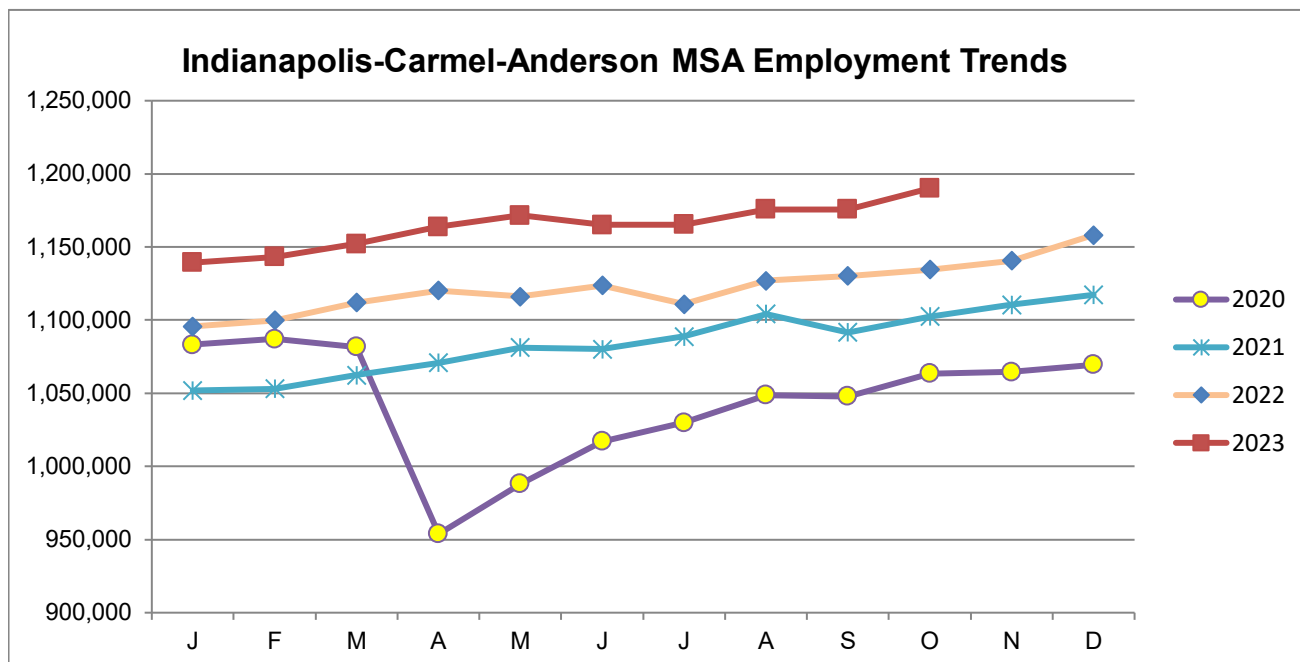
#### Total Claims

10/07/23 - 23,155  
10/14/23 - 22,848  
10/21/23 - 22,658  
10/28/23 - 23,618

(D) indicates item is affected by non-disclosure issues relating to industry or ownership status | \*Numbers subject to weekly revision | Source: Indiana Department of Workforce Development, Research and Development

Indianapolis-Carmel-Anderson MSA							
Wage and Salaried Employment	October 2023			# Change	% Change	# Change	% Change
Industry	Oct-23	Sep-23	Oct-22	Sep-23 to Oct-23		Oct-22 to Oct-23	
<b>Total Nonfarm</b>	<b>1,190,100</b>	<b>1,175,700</b>	<b>1,160,000</b>	<b>14,400</b>	<b>1.2%</b>	<b>30,100</b>	<b>2.6%</b>
<b>Total Private</b>	<b>1,047,800</b>	<b>1,033,400</b>	<b>1,021,100</b>	<b>14,400</b>	<b>1.4%</b>	<b>26,700</b>	<b>2.6%</b>
Goods Producing	164,400	163,900	158,500	500	0.3%	5,900	3.7%
Service-Providing	1,025,700	1,011,800	1,001,500	13,900	1.4%	24,200	2.4%
Private Service Providing	883,400	869,500	862,600	13,900	1.6%	20,800	2.4%
Mining and Logging	800	800	800	0	0.0%	0	0.0%
Mining, Logging and Construction	65,000	65,100	63,600	-100	-0.2%	1,400	2.2%
Construction	64,200	64,300	62,800	-100	-0.2%	1,400	2.2%
Specialty Trade Contractors	40,600	41,200	39,600	-600	-1.5%	1,000	2.5%
Manufacturing	99,400	98,800	94,900	600	0.6%	4,500	4.7%
Durable Goods	52,900	52,700	51,000	200	0.4%	1,900	3.7%
Transportation Equipment Manufacturing	14,700	14,600	14,000	100	0.7%	700	5.0%
Motor Vehicle Parts Manufacturing	9,800	9,700	9,300	100	1.0%	500	5.4%
Non-Durable Goods	46,500	46,100	43,900	400	0.9%	2,600	5.9%
Chemical Manufacturing	19,700	19,500	18,600	200	1.0%	1,100	5.9%
Trade, Transportation, and Utilities	249,100	243,300	248,200	5,800	2.4%	900	0.4%
Wholesale Trade	56,900	55,300	55,100	1,600	2.9%	1,800	3.3%
Merchant Wholesalers, Durable Goods	35,800	35,300	34,900	500	1.4%	900	2.6%
Retail Trade	99,500	98,000	99,400	1,500	1.5%	100	0.1%
General Merchandise Stores	24,200	23,600	23,700	600	2.5%	500	2.1%
Department Stores	4,200	4,000	4,200	200	5.0%	0	0.0%
Other General Merchandise Stores	20,000	19,600	19,500	400	2.0%	500	2.6%
Transportation, Warehousing, and Utilities	92,700	90,000	93,700	2,700	3.0%	-1,000	-1.1%
Transportation and Warehousing	89,700	87,000	90,500	2,700	3.1%	-800	-0.9%
Information	12,000	12,100	12,800	-100	-0.8%	-800	-6.3%
Telecommunications	2,900	2,900	3,100	0	0.0%	-200	-6.5%
Financial Activities	79,200	78,400	76,000	800	1.0%	3,200	4.2%
Finance and Insurance	62,100	61,800	58,800	300	0.5%	3,300	5.6%
Insurance Carriers and Related Activities	38,200	37,900	36,500	300	0.8%	1,700	4.7%
Insurance Carriers	20,900	20,600	20,300	300	1.5%	600	3.0%
Professional and Business Services	201,000	198,500	196,700	2,500	1.3%	4,300	2.2%
Professional, Scientific, and Technical Services	86,400	84,200	83,200	2,200	2.6%	3,200	3.9%
Management of Companies and Enterprises	15,100	14,900	14,700	200	1.3%	400	2.7%
Administrative and Support and waste management and Remediation Services	99,500	99,400	98,800	100	0.1%	700	0.7%
Administrative and Support Services	94,800	94,700	93,800	100	0.1%	1,000	1.1%
Employment Services	51,300	51,200	52,700	100	0.2%	-1,400	-2.7%
Education and Health Services	181,800	177,500	177,900	4,300	2.4%	3,900	2.2%
Educational Services	23,200	22,400	21,400	800	3.6%	1,800	8.4%
Health Care and Social Assistance	158,600	155,100	156,500	3,500	2.3%	2,100	1.3%
Ambulatory Health Care Services	66,800	66,300	66,900	500	0.8%	-100	-0.2%
Hospitals	46,500	46,300	46,600	200	0.4%	-100	-0.2%
Leisure and Hospitality	114,500	113,700	107,300	800	0.7%	7,200	6.7%
Accommodation and Food Services	100,000	99,000	90,500	1,000	1.0%	9,500	10.5%
Food Services and Drinking Places	90,600	90,100	82,900	500	0.6%	7,700	9.3%
Restaurants and Other Eating Places	80,700	80,200	75,100	500	0.6%	5,600	7.5%
Full-service restaurants	39,800	39,500	36,100	300	0.8%	3,700	10.3%
Limited-Service Restaurants and Other Eating Places	40,900	40,700	39,000	200	0.5%	1,900	4.9%
Other Services	45,800	46,000	43,700	-200	-0.4%	2,100	4.8%
<b>Total Government</b>	<b>142,300</b>	<b>142,300</b>	<b>138,900</b>	<b>0</b>	<b>0.0%</b>	<b>3,400</b>	<b>2.5%</b>
Federal Government	18,600	18,600	17,800	0	0.0%	800	4.5%
State Government	35,800	34,900	34,700	900	2.6%	1,100	3.2%
Local Government	87,900	88,800	86,400	-900	-1.0%	1,500	1.7%
Local Government Educational Services	44,400	44,900	43,300	-500	-1.1%	1,100	2.5%

Source: Indiana Dept of Workforce Development, Research and Analysis, Current Employment Statistics



Source: Indiana Department of Workforce Development, Research & Analysis, Current Employment Statistics | Note: Historical data for the most recent 4 years (both seasonally adjusted and not seasonally adjusted) are revised near the beginning of each calendar year, prior to the release of January estimates for statewide data.

Frequently Listed Jobs	
Top 20 job listings by number of openings in Region 5 in the past month	
Rank	Occupations
1	Registered Nurses
2	Stockers and Order Fillers
3	Retail Salespersons
4	Licensed Practical and Licensed Vocational Nurses
5	Maintenance and Repair Workers, General
6	Nursing Assistants
7	Accountants and Auditors
8	Software Developers
9	Sales Managers
10	Information Technology Project Managers
11	Management Analysts
12	Marketing Managers
13	Sales Representatives of Services, Except Advertising, Insurance, Financial Services, and Travel
14	Laborers and Freight, Stock, and Material Movers, Hand
15	Managers, All Other
16	Customer Service Representatives
17	News Analysts, Reporters, and Journalists
18	Sales Representatives, Wholesale and Manufacturing, Except Technical and Scientific Products
19	Industrial Engineers
20	First-Line Supervisors of Production and Operating Workers

Source: Indiana Workforce Development, Indiana Career Connect

Applicant Pool	
Top 20 occupations desired by applicants on their resumes in the past 12 months	
Occupations	# of applicants
Customer Service Representatives	4,010
Production Workers, All Other	2,555
Assemblers and Fabricators, All Other	2,108
Laborers and Freight, Stock, and Material Movers, Hand	2,068
Cashiers	2,060
Helpers--Production Workers	1,634
Office Clerks, General	1,264
Managers, All Other	1,087
Office and Administrative Support Workers, All Other	1,061
Packers and Packagers, Hand	1,033
Executive Secretaries and Executive Administrative Assistants	954
Industrial Truck and Tractor Operators	911
Retail Salespersons	875
Heavy and Tractor-Trailer Truck Drivers	871
Receptionists and Information Clerks	821
Data Entry Keyers	724
Shipping, Receiving, and Traffic Clerks	657
Janitors and Cleaners, Except Maids and Housekeeping Cleaners	593
Medical Assistants	589
Waiters and Waitresses	586

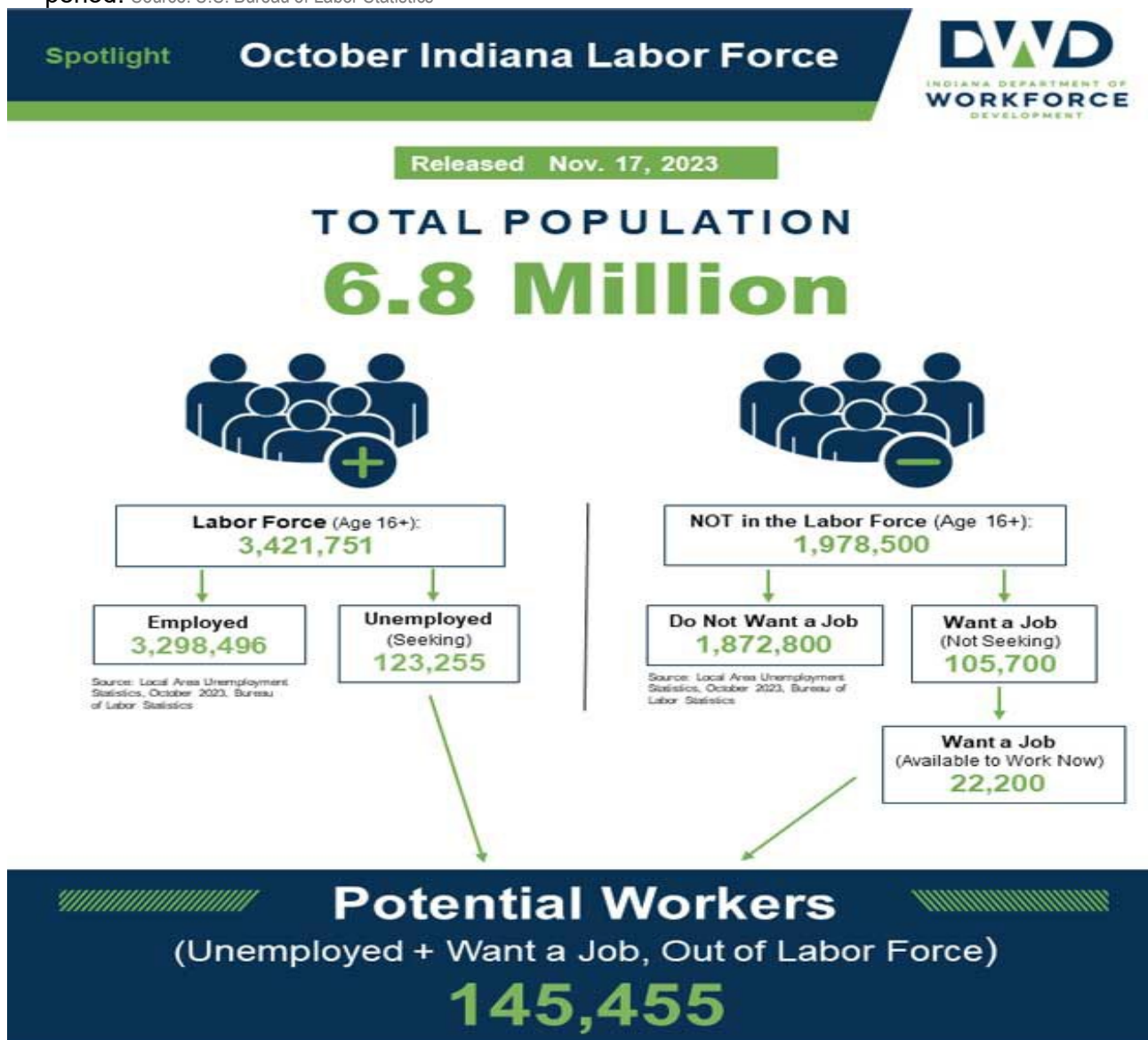
Source: Indiana Workforce Development, Indiana Career Connect



# Real Earnings Summary

REAL EARNINGS – OCTOBER 2023

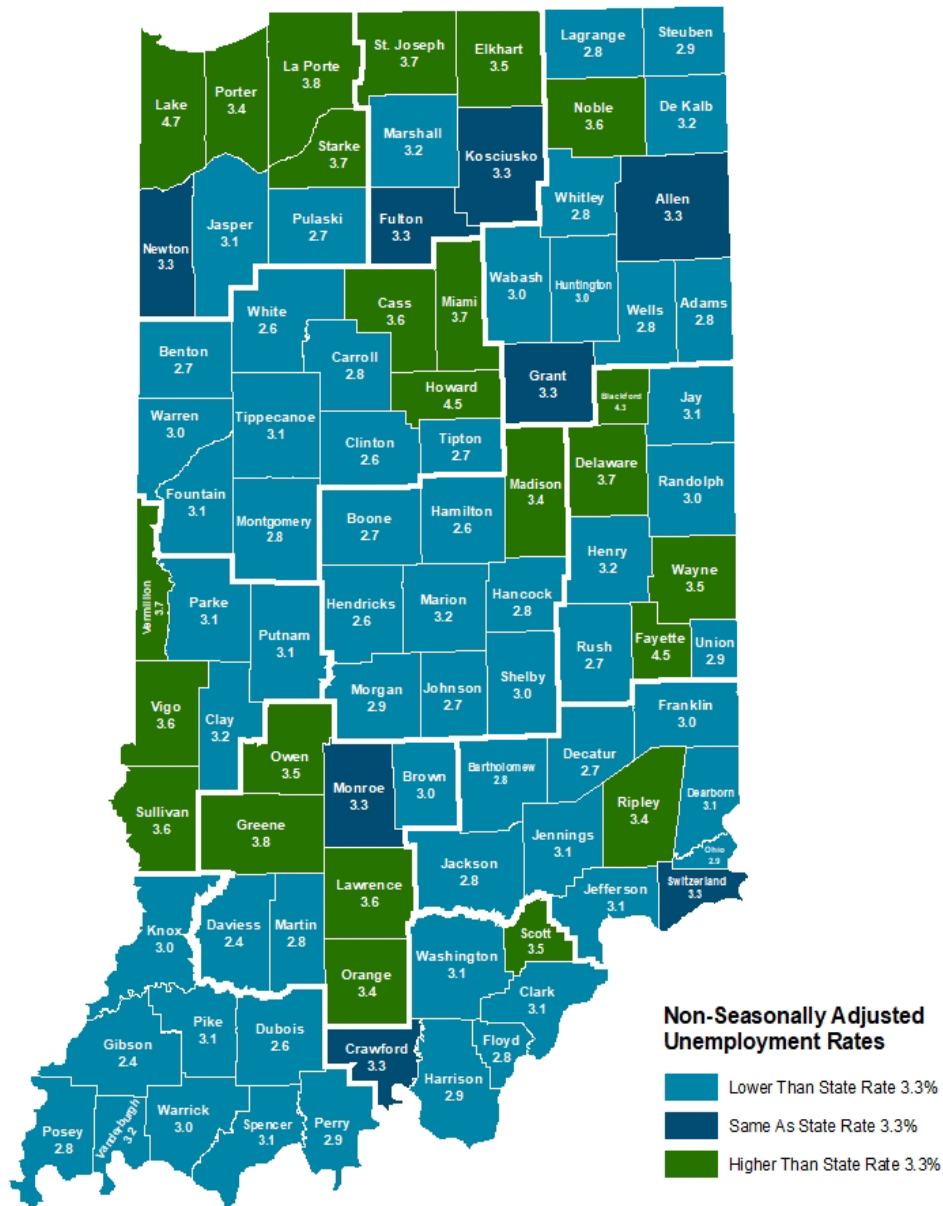
Real average hourly earnings for all employees increased 0.2 percent from September to October, seasonally adjusted, the U.S. Bureau of Labor Statistics reported. This result stems from an increase of 0.2 percent in average hourly earnings combined with no change in the Consumer Price Index for All Urban Consumers (CPI-U). Real average weekly earnings decreased 0.1 percent over the month due to the change in real average hourly earnings combined with a 0.3-percent decrease in the average workweek. Real average hourly earnings increased 0.8 percent, seasonally adjusted, from October 2022 to October 2023. The change in real average hourly earnings combined with a decrease of 0.9 percent in the average workweek resulted in no change in real average weekly earnings over this period. Source: U.S. Bureau of Labor Statistics



More about the US Bureau of Labor Statistics data sources used within:  
Local Area Unemployment Statistics (LAUS): Captures Indiana's labor force, which includes those currently employed and those who are unemployed and actively seeking work.  
Current Population Survey (CPS): Captures individuals not participating in Indiana's Labor Force. This set includes non participants that do not want a job (i.e., retirees and students) and those that want a job, but are not actively seeking work.  
U.S. Census Bureau, Indiana Population 2023.

Resources: Notes on Using Current Population Survey (CPS) Subnational Data and Differences Between CPS and LAUS Estimates

## County Unemployment Rates October 2023



Indiana Non-Seasonally Adjusted Rate 3.3%  
 Indiana Seasonally Adjusted Rate 3.6%  
 Source: DWD, Local Area Unemployment Statistics



### Questions?

Please contact the DWD  
 Research and Analysis  
 Regional Labor Analyst  
 listed below:

**Mike Petro**  
 Regional Labor Analyst  
 Research and Analysis

[Indiana Department of  
 Workforce Development](https://www.in.gov/dwd/)  
[gpetro@dwd.in.gov](mailto:gpetro@dwd.in.gov)