



November 2021 Labor Market Review

Reported by: Kim Stevenson

Regional Workforce Analyst

[Email Kim](#)

kstevenson@dwd.in.gov

Tel: 812.242.6427



LABOR MARKET REVIEW

Economic Growth Region 5

Statistical Data Report for November 2021, Released January 2022

State Employment and Unemployment

Unemployment rates were lower in November in 40 states and the District of Columbia and stable in 10 states, the U.S. Bureau of Labor Statistics reported. Forty-eight states and the District had jobless rate decreases from a year earlier and two states were little changed. The national unemployment rate, 4.2 percent, fell by 0.4 percentage point over the month and was 2.5 points lower than in November 2020.



Economic Growth Region (EGR) 5

Boone, Hamilton, Hancock, Hendricks, Johnson, Madison, Marion, Morgan, and Shelby counties

Unemployment Rates by State (seasonally adjusted): November 2021

U.S. - 4.2%

Illinois - 5.7%

Indiana - 3%

Kentucky - 4.1%

Michigan - 5.9%

Ohio - 4.8%

Source: U.S. Department of Labor, Bureau of Labor Statistics

Unemployment Rank by County (of 92 counties): November 2021

#8 - Marion (2.5%)

#11 - Madison (2.4%)

#33 - Lawrence (2%)

#47 - Shelby (1.8%)

#56 - Morgan (1.7%)

#65 - Hancock (1.6%)

#77 - Hendricks (1.5%)

#88 - Boone (1.3%)

#90 - Hamilton (1.3%)

Source: Indiana Department of Workforce Development, Research and Development, Local Area Unemployment Statistics

November 2021 Labor Force Estimates (not seasonally adjusted)						
Area	Labor Force	Employed	Unemployed	Nov-21	Oct-21	Nov-20
U.S.	162,099,000	155,797,000	6,302,000	3.9%	4.3%	6.4%
IN	3,311,883	3,242,407	69,476	2.1%	2.5%	4.8%
EGR 5	1,048,731	1,027,529	21,202	2.0%	2.5%	4.9%
Indpls-Carmel MSA	1,072,772	1,051,143	21,629	2.0%	2.5%	4.9%
Boone Co.	36,378	35,908	470	1.3%	1.6%	3.1%
Hamilton Co.	186,385	183,899	2,486	1.3%	1.6%	3.2%
Hancock Co.	40,773	40,118	655	1.6%	1.9%	3.8%
Hendricks Co.	90,762	89,410	1,352	1.5%	1.8%	3.5%
Johnson Co.	83,109	81,826	1,283	1.5%	1.9%	3.7%
Madison Co.	58,393	56,994	1,399	2.4%	2.9%	5.3%
Marion Co.	493,781	481,238	12,543	2.5%	3.1%	6.4%
Morgan Co.	36,160	35,559	601	1.7%	2.0%	3.7%
Shelby Co.	22,990	22,577	413	1.8%	2.2%	4.0%
Anderson	23,032	22,351	681	3.0%	3.8%	7.2%
Carmel	54,696	54,025	671	1.2%	1.6%	3.4%
Fishers	53,088	52,364	724	1.4%	1.7%	3.1%
Greenfield	11,337	11,129	208	1.8%	2.0%	3.8%
Greenwood	31,008	30,482	526	1.7%	2.2%	4.2%
Indianapolis	452,347	440,793	11,554	2.6%	3.1%	6.4%
Lawrence	26,983	26,357	626	2.3%	2.7%	5.0%
Lebanon	8,679	8,545	134	1.5%	1.8%	3.3%
Noblesville	36,123	35,624	499	1.4%	1.6%	3.2%
Plainfield	17,142	16,867	275	1.6%	2.0%	3.8%
Shelbyville	9,271	9,080	191	2.1%	2.7%	5.1%
Westfield	24,124	23,806	318	1.3%	1.6%	2.9%
Zionsville	14,844	14,685	159	1.1%	1.4%	3.3%

Source: Indiana Department of Workforce Development, Research & Analysis, Local Area Unemployment Statistics | Unemployment Statistics Released: 12/21

Notes: The data displayed are presented as estimates only. The most recent month's data are always preliminary and are revised when the next month's data are released.

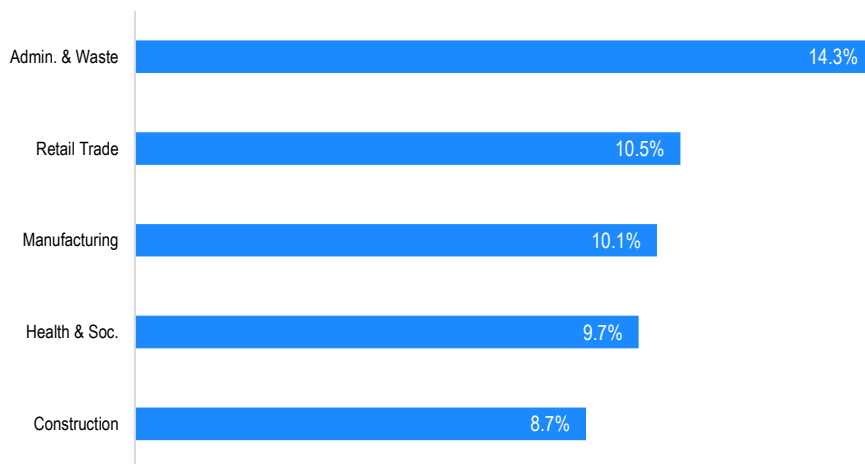
Consumer Price Index (CPI-U Change), Unadjusted Percent Change to November 2021 from

CPI Item	Nov-20	Oct-21	Nov-20	Oct-21
	U.S. City		Midwest Region*	
All Items	6.8%	0.5%	7.3%	0.4%
Food & Beverages	5.8%	0.4%	6.6%	0.5%
Housing	4.8%	0.3%	5.8%	0.2%
Apparel	5.0%	-1.6%	2.6%	-2.7%
Transportation	21.1%	1.9%	21.7%	1.8%
Medical Care	1.7%	0.2%	0.9%	0.2%
Recreation	3.2%	-0.3%	2.4%	0.2%
Education & Communication	1.7%	-0.1%	1.0%	-0.3%
Other Goods & Services	4.4%	0.2%	4.4%	0.3%

*Midwest region = Midwest Urban Average. Midwest Region includes Illinois, Indiana, Iowa, Kansas, Michigan, Minnesota, Missouri, Nebraska, North Dakota, Ohio, South Dakota and Wisconsin | Source: U.S. Bureau of Labor Statistics

Percentage of Unemployment Claims for Top 5 Region 5 Industries November 2021

Distribution as a Percent of Total



Source: Indiana Department of Workforce Development, Research and Analysis

WARN Notices

WARN Notices for Region 5 for November 2021

Company	City	County	# of workers affected	Notice Date
Kauffman Engineering	Lebanon	Boone	63	11/18/2021

Source: Indiana Department of Workforce Development, WARN Notices | For information on WARN Act requirements, you may go to the U.S. Department of Labor Employment Training Administration Fact Sheet:

<https://www.doleta.gov/programs/factsheet/warn.htm>

Unemployment Claims: November 2021

Region 5

Initial Claims

11/06/21 - 1,378
11/13/21 - 1,324
11/20/21 - 1,212
11/27/21 - 2050 (D)

Continued Claims

11/06/21 - 5,571
11/13/21 - 5,374
11/20/21 - 4,940
11/27/21 - 4,809

Total Claims

11/06/21 - 6,949
11/13/21 - 6,698
11/20/21 - 6,152
11/27/21 - 5,685

State of Indiana

Initial Claims

11/06/21 - 3,574
11/13/21 - 3,798
11/20/21 - 3,566
11/27/21 - 3,203

Continued Claims

11/06/21 - 28,405
11/13/21 - 26,895
11/20/21 - 22,940
11/27/21 - 29,179

Total Claims

11/06/21 - 31,979
11/13/21 - 30,693
11/20/21 - 26,506
11/27/21 - 32,382

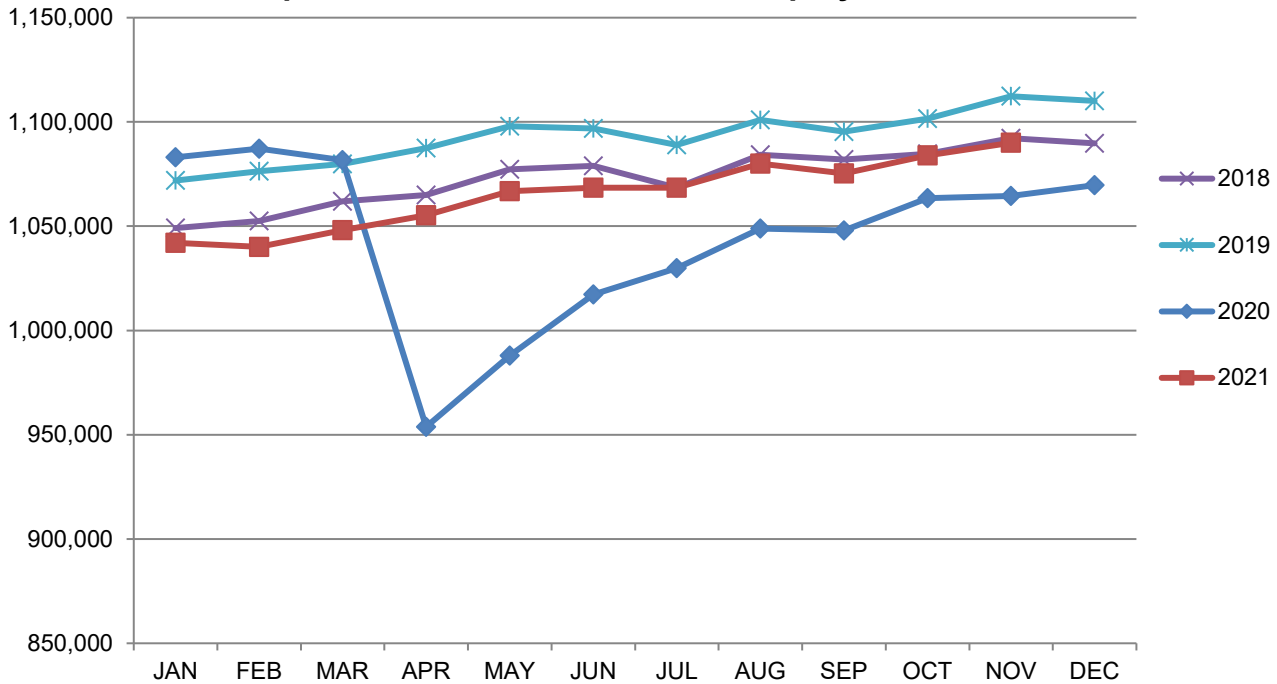
(D) indicates item is affected by non-disclosure issues relating to industry or ownership status |

Source: Indiana Department of Workforce Development, Research and Development

Indianapolis-Carmel-Anderson MSA							
Wage and Salaried Employment	November 2021			# Change	% Change	# Change	% Change
Industry	Nov-21	Oct-21	Nov-20	Oct-21 to Nov-21		Nov-20 to Nov-21	
Total Nonfarm	1,090,000	1,083,900	1,064,500	6,100	0.6%	25,500	2.4%
Total Private	950,900	945,600	927,300	5,300	0.6%	23,600	2.6%
Goods Producing	158,100	158,000	149,000	100	0.1%	9,100	6.1%
Service-Providing	931,900	925,900	915,500	6,000	0.7%	16,400	1.8%
Private Service Providing	792,800	787,600	778,300	5,200	0.7%	14,500	1.9%
Mining and Logging	800	800	700	0	0.0%	100	14.3%
Mining, Logging and Construction	63,100	62,900	59,100	200	0.3%	4,000	6.8%
Construction	62,300	62,100	58,400	200	0.3%	3,900	6.7%
Specialty Trade Contractors	37,500	37,400	36,500	100	0.3%	1,000	2.7%
Manufacturing	95,000	95,100	89,900	-100	-0.1%	5,100	5.7%
Durable Goods	53,100	53,400	49,600	-300	-0.6%	3,500	7.1%
Transportation Equipment Manufacturing	15,400	15,400	15,000	0	0.0%	400	2.7%
Motor Vehicle Parts Manufacturing	10,200	10,200	9,900	0	0.0%	300	3.0%
Non-Durable Goods	41,900	41,700	40,300	200	0.5%	1,600	4.0%
Chemical Manufacturing	17,300	17,100	16,600	200	1.2%	700	4.2%
Trade, Transportation, and Utilities	237,200	233,300	232,600	3,900	1.7%	4,600	2.0%
Wholesale Trade	46,800	46,200	47,300	600	1.3%	-500	-1.1%
Merchant Wholesalers, Durable Goods	30,700	30,700	30,800	0	0.0%	-100	-0.3%
Retail Trade	107,200	106,100	101,500	1,100	1.0%	5,700	5.6%
General Merchandise Stores	23,900	22,300	24,400	1,600	7.2%	-500	-2.1%
Department Stores	4,400	3,600	4,600	800	22.2%	-200	-4.4%
Other General Merchandise Stores	19,500	18,700	19,800	800	4.3%	-300	-1.5%
Transportation, Warehousing, and Utilities	83,200	81,000	83,800	2,200	2.7%	-600	-0.7%
Transportation and Warehousing	78,500	76,300	80,400	2,200	2.9%	-1,900	-2.4%
Information	11,700	11,500	11,700	200	1.7%	0	0.0%
Telecommunications	3,100	3,100	3,300	0	0.0%	-200	-6.1%
Financial Activities	73,600	72,700	71,600	900	1.2%	2,000	2.8%
Finance and Insurance	58,100	57,400	55,600	700	1.2%	2,500	4.5%
Insurance Carriers and Related Activities	33,100	32,900	33,100	200	0.6%	0	0.0%
Insurance Carriers	18,900	18,900	19,700	0	0.0%	-800	-4.1%
Professional and Business Services	169,700	169,600	169,600	100	0.1%	100	0.1%
Professional, Scientific, and Technical Services	71,600	70,700	66,900	900	1.3%	4,700	7.0%
Management of Companies and Enterprises	13,100	13,000	12,900	100	0.8%	200	1.6%
Administrative and Support and Waste Management and Remediation Services	85,000	85,900	89,800	-900	-1.1%	-4,800	-5.4%
Administrative and Support Services	80,700	81,500	85,600	-800	-1.0%	-4,900	-5.7%
Employment Services	45,300	44,100	45,900	1,200	2.7%	-600	-1.3%
Education and Health Services	164,400	163,800	161,900	600	0.4%	2,500	1.5%
Educational Services	19,200	19,100	18,700	100	0.5%	500	2.7%
Health Care and Social Assistance	145,200	144,700	143,200	500	0.4%	2,000	1.4%
Ambulatory Health Care Services	59,000	58,700	59,700	300	0.5%	-700	-1.2%
Hospitals	44,200	44,100	43,600	100	0.2%	600	1.4%
Leisure and Hospitality	95,700	96,800	90,300	-1,100	-1.1%	5,400	6.0%
Accommodation and Food Services	81,400	81,400	77,400	0	0.0%	4,000	5.2%
Food Services and Drinking Places	75,800	75,500	72,300	300	0.4%	3,500	4.8%
Restaurants and Other Eating Places	70,500	70,100	66,500	400	0.6%	4,000	6.0%
Full-service restaurants	31,900	31,800	31,100	100	0.3%	800	2.6%
Limited-Service Restaurants and Other Eating Places	38,600	38,300	35,400	300	0.8%	3,200	9.0%
Other Services	40,500	39,900	40,600	600	1.5%	-100	-0.3%
Total Government	139,100	138,300	137,200	800	0.6%	1,900	1.4%
Federal Government	17,600	17,600	18,000	0	0.0%	-400	-2.2%
State Government	34,400	34,200	34,400	200	0.6%	0	0.0%
Local Government	87,100	86,500	84,800	600	0.7%	2,300	2.7%
Local Government Educational Services	43,500	43,200	42,400	300	0.7%	1,100	2.6%

Source: Indiana Dept of Workforce Development, Research and Analysis, Current Employment Statistics

Indianapolis-Carmel-Anderson MSA Employment Trends



Frequently Listed Jobs

Top 20 job listings by number of openings in Region 5 in the past month

Rank	Occupations
1	Order Fillers, Wholesale and Retail Sales
2	Laborers and Freight, Stock, and Material Movers, Hand
3	Maintenance and Repair Workers, General
4	Human Resources Specialists
5	Retail Salespersons
6	Merchandise Displayers and Window Trimmers
7	Registered Nurses
8	First-Line Supervisors of Transportation and Material-Moving Machine and Vehicle Operators
9	Landscaping and Groundskeeping Workers
10	Customer Service Representatives
11	Nursing Assistants
12	First-Line Supervisors of Food Preparation and Serving Workers
13	Industrial Truck and Tractor Operators
14	Production Workers, All Other
15	First-Line Supervisors of Production and Operating Workers
16	Licensed Practical and Licensed Vocational Nurses
17	Software Developers, Applications
18	Food Preparation Workers
19	Patient Representatives
20	Preschool Teachers, Except Special Education

Source: Indiana Workforce Development, Indiana Career Connect

Applicant Pool

Top 20 occupations desired by applicants on their resumes in the past 12 months

Occupations	# of applicants
Customer Service Representatives	6,563
Production Workers, All Other	5,133
Assemblers and Fabricators, All Other	4,275
Stock Clerks and Order Fillers	4,160
Cashiers	4,045
Laborers and Freight, Stock, and Material Movers, Hand	3,461
Helpers--Production Workers	3,344
Office Clerks, General	2,380
Managers, All Other	2,213
Nursing Assistants	2,000
Packers and Packagers, Hand	1,960
Office and Administrative Support Workers, All Other	1,936
Executive Secretaries and Executive Administrative Assistants	1,837
Retail Salespersons	1,760
Receptionists and Information Clerks	1,610
Industrial Truck and Tractor Operators	1,583
Combined Food Preparation and Serving Workers, Including Fast Food	1,498
Sales Representatives, Services, All Other	1,381
Waiters and Waitresses	1,298
Administrative Services Managers	1,284

Source: Indiana Workforce Development, Indiana Career Connect

Real Earnings Summary

REAL EARNINGS – NOVEMBER 2021

All employees

Real average hourly earnings for all employees decreased 0.4 percent from October to November, seasonally adjusted, the U.S. Bureau of Labor Statistics reported. This result stems from an increase of 0.3 percent in average hourly earnings combined with an increase of 0.8 percent in the Consumer Price Index for All Urban Consumers (CPI-U).

Real average weekly earnings decreased 0.2 percent over the month due to the change in real average hourly earnings combined with an increase of 0.3 percent in the average workweek.

Real average hourly earnings decreased 1.9 percent, seasonally adjusted, from November 2020 to November 2021. The change in real average hourly earnings combined with no change in the average workweek resulted in a 1.9-percent decrease in real average weekly earnings over this period.

Production and nonsupervisory employees

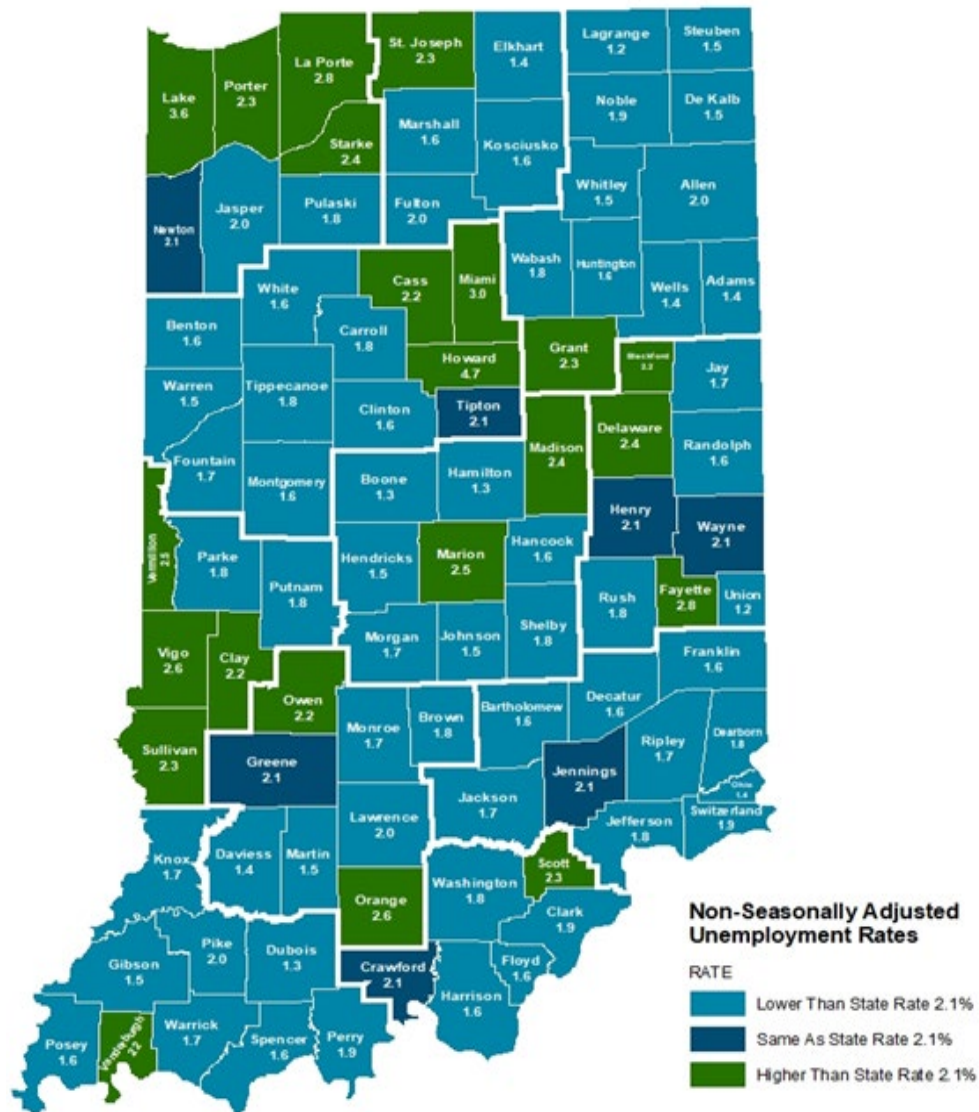
Real average hourly earnings for production and nonsupervisory employees decreased 0.4 percent from October to November, seasonally adjusted. This result stems from a 0.5-percent increase in average hourly earnings combined with an increase of 0.9 percent in the Consumer Price Index for Urban Wage Earners and Clerical Workers (CPI-W).

Real average weekly earnings decreased 0.4 percent over the month due to the change in real average hourly earnings combined with no change in average weekly hours.

From November 2020 to November 2021, real average hourly earnings decreased 1.6 percent, seasonally adjusted. The change in real average hourly earnings combined with a 0.3-percent decrease in the average workweek resulted in a 1.9-percent decrease in real average weekly earnings over this period.

Source: U.S. Bureau of Labor Statistics

County Unemployment Rates November 2021



INDIANA
DEPARTMENT OF
WORKFORCE
DEVELOPMENT

Questions?

Please contact the DWD
Research and Analysis
Regional Labor Analyst
listed below:

Kim Stevenson

Regional Labor Analyst
Research and Analysis

[Indiana Department of
Workforce Development](https://www.in.gov/workforce)

812.242.6427

kstevenson@dwd.in.gov