

INDUSTRY SECTOR SNAPSHOT

## Economic Growth Region 5

## Quarter 3 2025

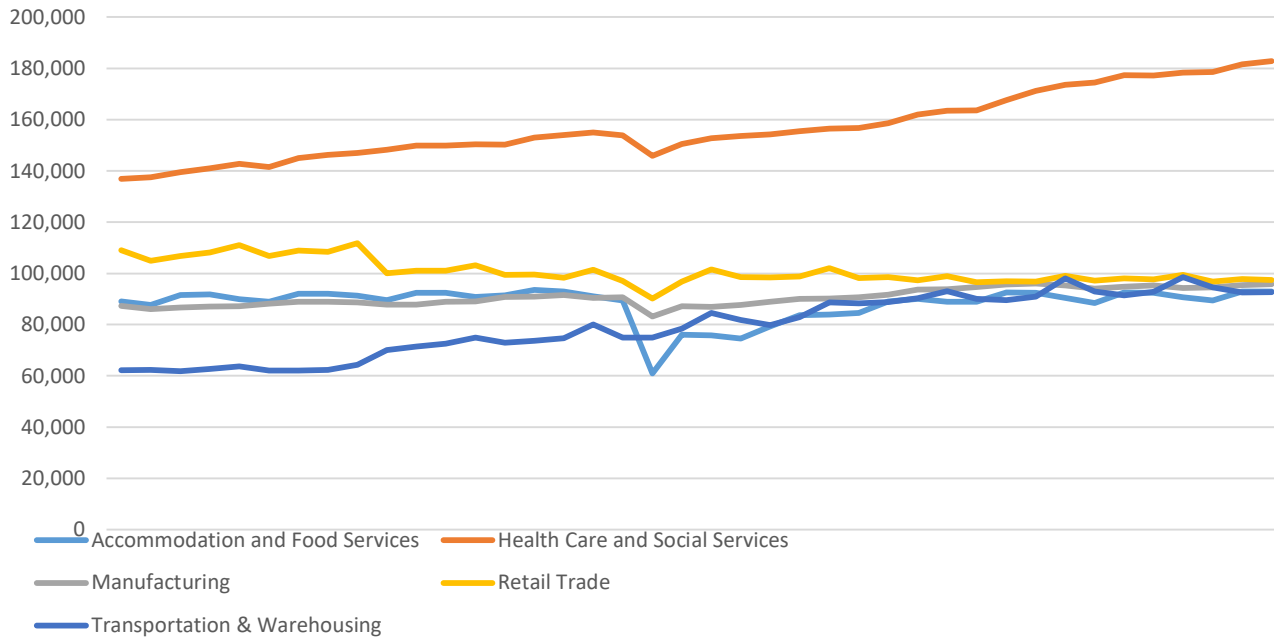
Boone, Hancock, Hamilton, Hendricks, Johnson, Madison, Marion, Morgan, and Shelby Counties

Industry	Jobs	Previous Year	Establishments	Previous Year	Average Weekly Wage	Previous Year
<b>Total</b>	<b>1,097,094</b>	<b>↑ 0.69%</b>	<b>54,006</b>	<b>↑ 2.07%</b>	<b>\$1,316</b>	<b>↑ 4.11%</b>
Accommodation and Food Services	92,843	↑ 0.53%	4,325	↑ 1.03%	\$521	↑ 3.78%
Admin. & Support & Waste Mgt. & Rem. Services	78,413	↓ -1.92%	3,593	↑ 0.70%	\$933	↑ 2.19%
Agriculture, Forestry, Fishing and Hunting	2,562	↑ 2.07%	222	↑ 1.83%	\$1,161	↑ 3.29%
Arts, Entertainment, and Recreation*	20,596	↑ 3.89%	867	↑ 2.12%	\$1,249	↑ 3.91%
Construction	68,132	↑ 3.46%	4,285	↑ 1.09%	\$1,631	↑ 3.56%
Educational Services	69,379	↑ 0.27%	1,184	↑ 1.28%	\$1,078	↑ 0.19%
Finance and Insurance	44,869	↓ -0.98%	3,404	↑ 1.43%	\$1,936	↑ 6.08%
Health Care and Social Services	182,748	↑ 3.08%	5,764	↑ 7.82%	\$1,416	↑ 3.43%
Information	10,736	↓ -5.29%	935	↑ 4.59%	\$1,669	↑ 7.75%
Management of Companies and Enterprises*	14,279	↓ -1.14%	423	↓ -0.47%	\$2,060	↑ 7.91%
Manufacturing	95,713	↑ 0.45%	1,872	↑ 0.43%	\$1,702	↑ 4.23%
Mining*	706	↑ 9.63%	44	↑ 2.33%	\$1,464	↓ -14.59%
Other Services (Except Public Administration)	34,368	↑ 1.33%	4,336	↑ 2.43%	\$1,033	↑ 7.72%
Professional, Scientific, and Technical Services	73,309	↑ 1.28%	8,220	↑ 2.25%	\$1,922	↑ 3.67%
Public Administration	47,324	↓ -2.05%	361	↓ -1.37%	\$1,438	↑ 3.38%
Real Estate and Rental and Leasing	17,295	↑ 4.36%	2,793	↑ 2.68%	\$1,329	↑ 3.50%
Retail Trade	97,446	↓ -0.20%	5,509	↑ 0.33%	\$809	↑ 4.79%
Transportation & Warehousing	92,633	↓ -0.10%	1,936	↑ 0.31%	\$1,187	↑ 5.51%
Utilities	4,673	↑ 0.67%	110	○ 0.00%	\$2,187	↑ 3.90%
Wholesale Trade	48,066	↓ -0.64%	3,823	↑ 1.38%	\$1,733	↑ 3.90%

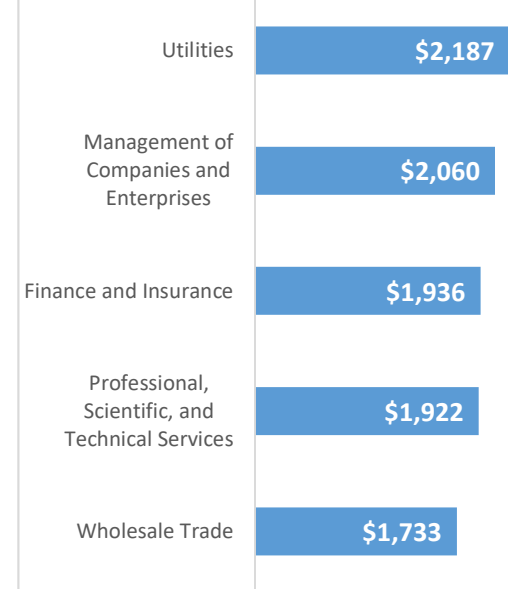
\* These industries exclude county data (jobs and wages) that are not available due to non-disclosure requirements.

D = This item is not available due to non-disclosure requirements.

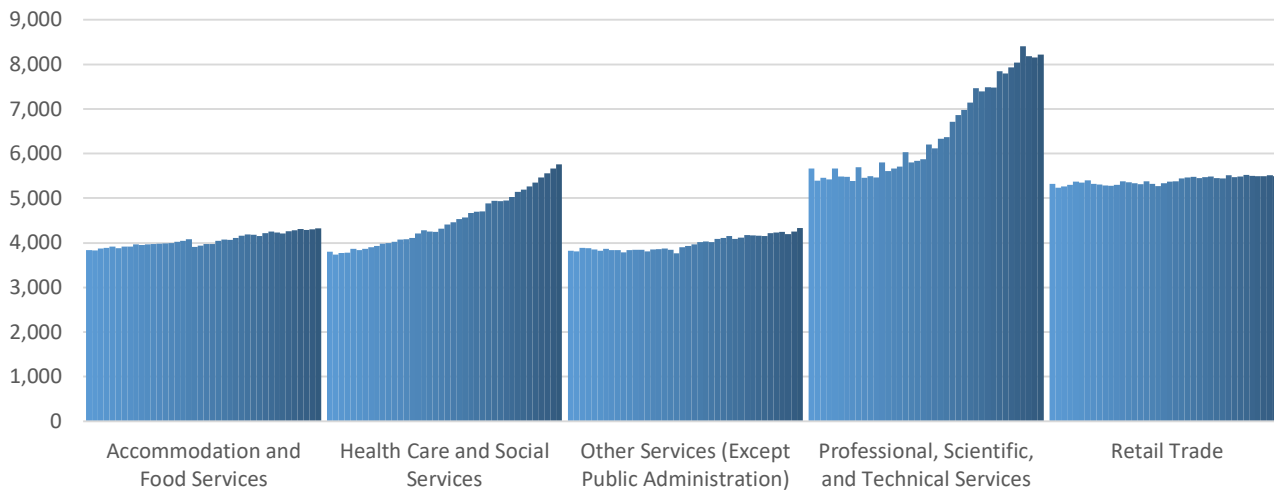
### Top 5 Largest Industries by Jobs (past 10 years)



### Top 5 Paying Industries by Average Weekly Wage



### Top 5 Largest Industries by Establishments (past 10 years)



Source:

*Quarterly Census of Employment and Wages, Indiana Dept. of Workforce Development*

For more information, contact:

**Jillian A Gregory**

Regional Workforce Analyst

[jgregory@dwd.in.gov](mailto:jgregory@dwd.in.gov)

