



HOOSIERS BY THE NUMBERS

Your premier source for labor market information for Indiana.

DWD

INDIANA DEPARTMENT OF
WORKFORCE
DEVELOPMENT

LABOR MARKET REVIEW



May 2026 Labor Market Review

Reported by: **Cassie Janes**

Regional Workforce Analyst

[Email Cassie](#)

cjanes@dwd.in.gov

DWD

INDIANA DEPARTMENT OF
WORKFORCE
DEVELOPMENT

Economic Growth Region 4

Statistical Data Report for May 2026, Released July 2026

State Employment and Unemployment

Unemployment rates were lower in May in 6 states, higher in 2 states, and stable in 42 states and the District of Columbia, the U.S. Bureau of Labor Statistics reported. Sixteen states had jobless rate increases from a year earlier, 6 states had decreases, and 28 states and the District had little change. The national unemployment rate, 4.3 percent, was unchanged both over the month and over the year.



Economic Growth Region (EGR) 4

Benton, Carroll, Cass, Clinton, Fountain, Howard, Miami, Montgomery, Tippecanoe, Tipton, Warren and White Counties.

May 2026 Labor Force Estimates (not seasonally adjusted)						
Area	Labor Force	Employed	Unemployed	May-26	Apr-26	May-25
U.S.	169,801,000	162,897,000	6,904,000	4.1%	4.0%	4.0%
IN	3,516,430	3,403,025	113,405	3.2%	2.8%	3.6%
EGR 4	261,129	252,625	8,504	3.3%	2.8%	3.8%
Kokomo MSA	35,520	33,807	1,713	4.8%	4.7%	6.0%
Lafayette MSA	124,859	121,139	3,720	3.0%	2.3%	3.4%
Benton Co.	4,894	4,765	129	2.6%	2.4%	3.0%
Carroll Co.	11,388	11,079	309	2.7%	2.1%	3.3%
Cass Co.	17,932	17,329	603	3.4%	3.0%	3.9%
Clinton Co.	17,275	16,800	475	2.7%	2.2%	3.3%
Fountain Co.	8,256	8,018	238	2.9%	2.4%	3.5%
Howard Co.	35,520	33,807	1,713	4.8%	4.7%	6.0%
Miami Co.	16,314	15,737	577	3.5%	3.3%	4.2%
Montgomery Co.	20,825	20,260	565	2.7%	2.1%	3.0%
Tippecanoe Co.	103,838	100,688	3,150	3.0%	2.3%	3.5%
Tipton Co.	8,111	7,852	259	3.2%	2.7%	3.9%
Warren Co.	4,739	4,607	132	2.8%	2.2%	3.0%
White Co.	12,037	11,683	354	2.9%	2.6%	3.0%
Attica	1,701	1,661	40	2.4%	2.3%	3.2%
Crawfordsville	8,320	8,074	246	3.0%	2.2%	3.3%
Delphi	1,274	1,231	43	3.4%	2.5%	4.3%
Fowler	1,260	1,227	33	2.6%	2.3%	3.0%
Frankfort	8,705	8,462	243	2.8%	2.2%	3.2%
Kokomo	24,740	23,496	1,244	5.0%	5.0%	6.4%
Lafayette	39,715	38,570	1,145	2.9%	2.4%	3.6%
Logansport	8,358	8,053	305	3.6%	3.3%	4.0%
Monticello	2,427	2,350	77	3.2%	2.5%	3.6%
Peru	5,004	4,817	187	3.7%	3.5%	4.6%
Tipton	2,582	2,499	83	3.2%	2.9%	3.9%
West Lafayette	22,743	22,093	650	2.9%	2.0%	3.2%
Williamsport	1,075	1,049	26	2.4%	2.2%	3.2%

Unemployment Rates by State (seasonally adjusted): May 2026

- U.S. - 4.3%
- Illinois - 5.1%
- Indiana - 3.3%**
- Kentucky - 4.5%
- Michigan - 5.1%
- Ohio - 3.7%

Source: U.S. Department of Labor, Bureau of Labor Statistics

Unemployment Rank by County (of 92 counties): May 2026

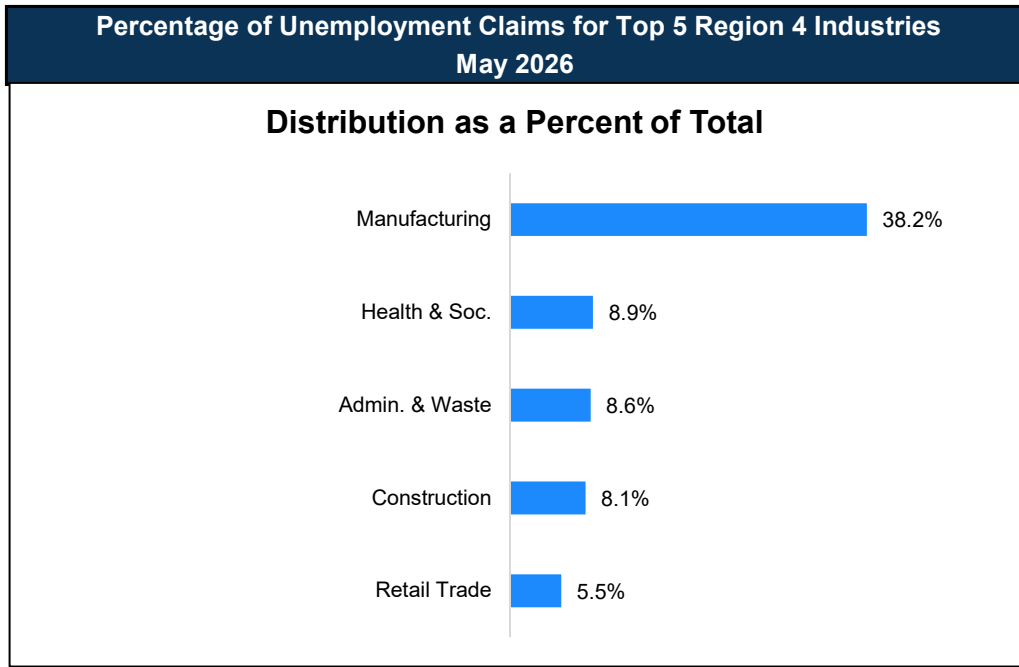
- #1 - Howard (4.8%)
- #14 - Miami (3.5%)
- #18 - Cass (3.4%)
- #36 - Tipton (3.2%)
- #58 - Tippecanoe (3%)
- #63 - Fountain (2.9%)
- #72 - White (2.9%)
- #78 - Warren (2.8%)
- #80 - Carroll (2.7%)
- #81 - Clinton (2.7%)
- #87 - Montgomery (2.7%)
- #89 - Benton (2.6%)

Source: Indiana Department of Workforce Development, Research and Development, Local Area Unemployment Statistics

Source: Indiana Department of Workforce Development, Research & Analysis, Local Area Unemployment Statistics | Unemployment Statistics Released:06/26 | Notes: The data displayed are presented as estimates only. The most recent month's data are always preliminary and are revised when the next month's data are released.

Consumer Price Index (CPI-U Change), Unadjusted Percent Change to May 2026 from				
CPI Item	May-25	Apr-26	May-25	Apr-26
	U.S. City		Midwest Region*	
All Items	4.2%	0.6%	5.0%	1.1%
Food & Beverages	3.0%	0.1%	3.2%	0.4%
Housing	3.6%	0.3%	4.6%	0.3%
Apparel	4.8%	-0.4%	6.1%	0.2%
Transportation	9.3%	2.3%	10.1%	4.1%
Medical Care	2.6%	0.3%	3.6%	0.5%
Recreation	2.6%	0.3%	4.8%	0.7%
Education & Communication	0.8%	0.7%	1.1%	0.9%
Other Goods & Services	4.9%	0.8%	2.7%	2.1%

*Midwest region = Midwest Urban Average. Midwest Region includes Illinois, Indiana, Iowa, Kansas, Michigan, Minnesota, Missouri, Nebraska, North Dakota, Ohio, South Dakota and Wisconsin | Source: U.S. Bureau of Labor Statistics



Source: Indiana Department of Workforce Development, Research and Analysis

WARN Notices

WARN Notices for Region 4 for May 2026				
Company	City	County	# of workers affected	Notice Date

There are no WARN Notices for May 2026 for Region 4.

Source: Indiana Department of Workforce Development, WARN Notices | For information on WARN Act requirements, you may go to the U.S. Department of Labor Employment Training Administration Fact Sheet:

<https://www.doleia.gov/programs/factsht/warn.htm>

Unemployment Claims: May 2026

Region 4

Initial Claims

05/02/26 - 102(D)

05/09/26 - 90(D)

05/16/26 - 126(D)

05/23/26 - 94(D)

05/30/26 - 101(D)

Continued Claims

05/02/26 - 1,181

05/09/26 - 1,142

05/16/26 - 1,154

05/23/26 - 1,131

05/30/26 - 1,101

Total Claims

05/02/26 - 1,283

05/09/26 - 1,232

05/16/26 - 1,280

05/23/26 - 1,225

05/30/26 - 1,202

State of Indiana

Initial Claims

05/02/26 - 2,224

05/09/26 - 2,550

05/16/26 - 2,385

05/23/26 - 1,976

05/30/26 - 2164

Continued Claims

05/02/26 - 19,186

05/09/26 - 18,867

05/16/26 - 18,012

05/23/26 - 18,611

05/30/26 - 18,982

Total Claims

05/02/26 - 21,410

05/09/26 - 21,417

05/16/26 - 20,397

05/23/26 - 20,587

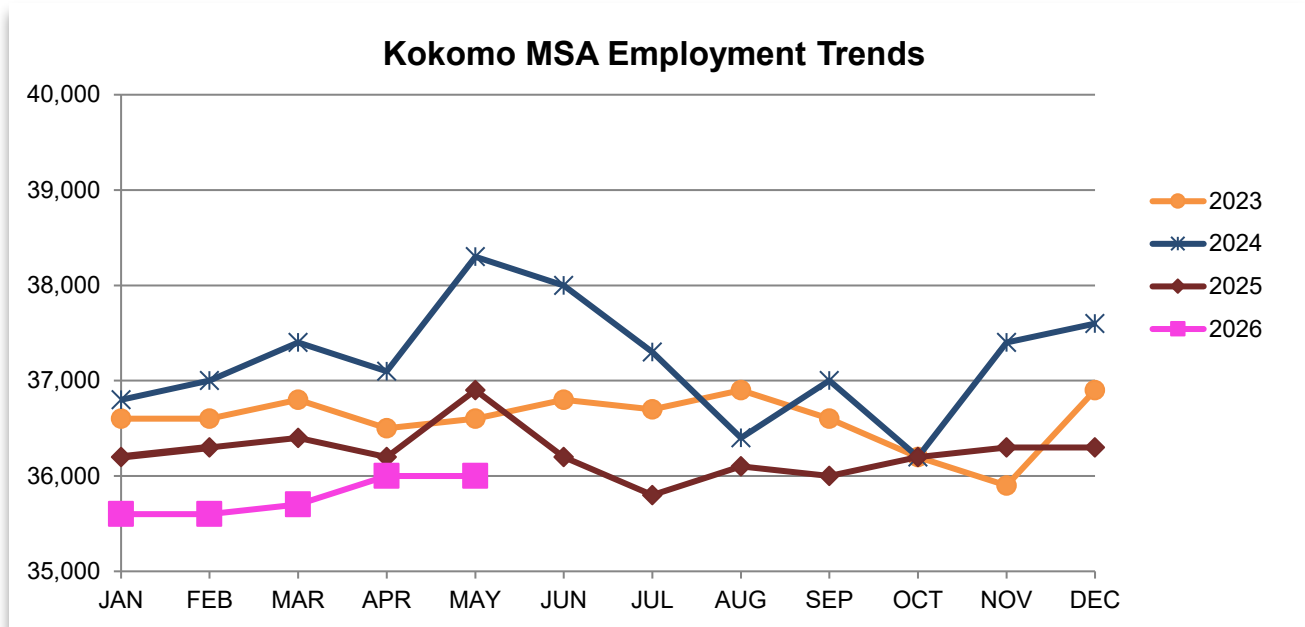
05/30/26 - 21,146

(D) indicates item is affected by non-disclosure issues relating to industry or ownership status |

*Numbers subject to weekly revision Source: Indiana Department of Workforce Development, Research and Development

Kokomo MSA							
Wage and Salaried Employment	May 2026			# Change	% Change	# Change	% Change
Industry	May-26	Apr-26	May-25	Apr-26 to May-26		May-25 to May-26	
Total Nonfarm	36,000	36,000	36,900	0	0.0%	-900	-2.4%
Total Private	31,200	31,200	31,900	0	0.0%	-700	-2.2%
Goods Producing	10,100	10,100	10,400	0	0.0%	-300	-2.9%
Service-Providing	25,900	25,900	26,500	0	0.0%	-600	-2.3%
Private Service Providing	21,100	21,100	21,500	0	0.0%	-400	-1.9%
Mining, Logging and Construction	1,800	1,800	1,900	0	0.0%	-100	-5.3%
Manufacturing	8,300	8,300	8,500	0	0.0%	-200	-2.4%
Trade, Transportation, and Utilities	6,300	6,200	6,300	100	1.6%	0	0.0%
Wholesale Trade	900	900	900	0	0.0%	0	0.0%
Retail Trade	4,500	4,400	4,500	100	2.3%	0	0.0%
Transportation, Warehousing, and Utilities	900	900	900	0	0.0%	0	0.0%
Information	200	200	200	0	0.0%	0	0.0%
Financial Activities	1,200	1,200	1,200	0	0.0%	0	0.0%
Leisure and Hospitality	4,300	4,200	4,400	100	2.4%	-100	-2.3%
Other Services	1,800	1,800	1,700	0	0.0%	100	5.9%
Government	4,800	4,800	5,000	0	0.0%	-200	-4.0%
Local Government	3,500	3,400	3,400	100	2.9%	100	2.9%
Local Government Educational Services	1,900	1,900	1,900	0	0.0%	0	0.0%
Local Government excluding Educational Services	1,600	1,500	1,500	100	6.7%	100	6.7%

Source: Indiana Dept of Workforce Development, Research and Analysis, Current Employment Statistics

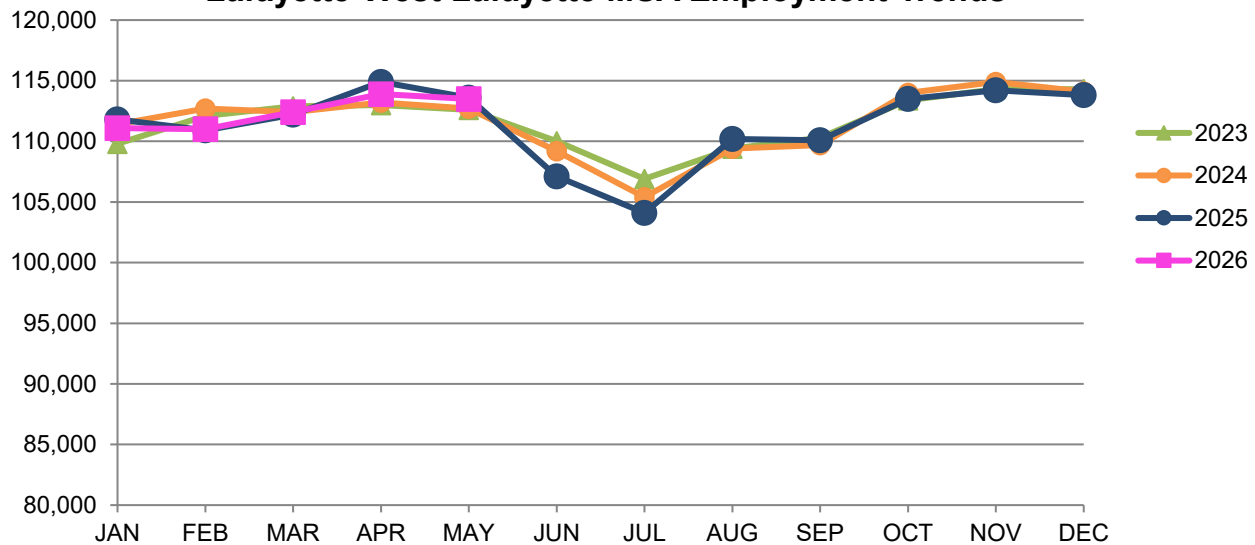


Source: Indiana Department of Workforce Development, Research & Analysis, Current Employment Statistics | Note: Historical data for the most recent 4 years (both seasonally adjusted and not seasonally adjusted) are revised near the beginning of each calendar year, prior to the release of January estimates for statewide data.

Lafayette-West Lafayette MSA							
Wage and Salaried Employment	May 2026			# Change	% Change	# Change	% Change
Industry	May-26	Apr-26	May-25	Apr-26 to May-26		May-25 to May-26	
Total Nonfarm	113,500	113,900	113,600	-400	-0.4%	-100	-0.1%
Total Private	84,200	84,000	84,300	200	0.2%	-100	-0.1%
Goods Producing	26,100	25,800	26,000	300	1.2%	100	0.4%
Service Providing	87,400	88,100	87,600	-700	-0.8%	-200	-0.2%
Private Service Providing	58,100	58,200	58,300	-100	-0.2%	-200	-0.3%
Mining, Logging and Construction	5,100	4,900	4,700	200	4.1%	400	8.5%
Manufacturing	21,000	20,900	21,300	100	0.5%	-300	-1.4%
Durable Goods	16,300	16,300	16,700	0	0.0%	-400	-2.4%
Trade, Transportation and Utilities	15,400	15,500	15,700	-100	-0.7%	-300	-1.9%
Wholesale Trade	3,200	3,200	3,300	0	0.0%	-100	-3.0%
Retail Trade	9,500	9,600	9,400	-100	-1.0%	100	1.1%
Transportation, Warehousing and Utilities	2,700	2,700	3,000	0	0.0%	-300	-10.0%
Information	700	700	800	0	0.0%	-100	-12.5%
Financial Activities	3,300	3,300	3,400	0	0.0%	-100	-2.9%
Professional and Business Services	9,400	9,300	8,700	100	1.1%	700	8.1%
Education and Health Services	13,800	13,800	14,000	0	0.0%	-200	-1.4%
Leisure and Hospitality	11,300	11,400	11,400	-100	-0.9%	-100	-0.9%
Accommodation and Food Services	10,600	10,600	10,500	0	0.0%	100	1.0%
Other Services	4,200	4,200	4,300	0	0.0%	-100	-2.3%
Total Government	29,300	29,900	29,300	-600	-2.0%	0	0.0%
Federal Government	500	500	500	0	0.0%	0	0.0%
State Government	20,900	21,700	20,900	-800	-3.7%	0	0.0%
Local Government	7,900	7,700	7,900	200	2.6%	0	0.0%
Local Government Educational Services	4,600	4,500	4,600	100	2.2%	0	0.0%

Source: Indiana Dept of Workforce Development, Research and Analysis, Current Employment Statistics

Lafayette-West Lafayette MSA Employment Trends



Source: Indiana Department of Workforce Development, Research & Analysis, Current Employment Statistics | Note: Historical data for the most recent 4 years (both seasonally adjusted and not seasonally adjusted) are revised near the beginning of each calendar year, prior to the release of January estimates for statewide data.

Frequently Listed Jobs	
Top 20 job listings by number of postings in Region 4 in the past month	
Rank	Occupations
1	Registered Nurses
2	Driver/Sales Workers and Truck Drivers
3	Therapists
4	Retail Salespersons
5	Physicians
6	Laborers and Material Movers
7	First-Line Supervisors of Sales Workers
8	Building Cleaning Workers
9	Designers
10	Licensed Practical and Licensed Vocational Nurses
11	Maintenance and Repair Workers, General
12	Miscellaneous Production Workers
13	Nursing Assistants, Orderlies, and Psychiatric Aides
14	Health Practitioner Support Technologists and Technicians
15	Miscellaneous Healthcare Support Occupations
16	Home Health and Personal Care Aides
17	Diagnostic Related Technologists and Technicians
18	Food Service Managers
19	Industrial Engineers, Including Health and Safety
20	Sales Representatives, Wholesale and Manufacturing

Source: Lightcast

Applicant Pool	
Top 20 occupations desired by applicants on their resumes in the past 12 months	
Occupations	# of applicants
Production Workers, All Other	636
Assemblers and Fabricators, All Other	498
Helpers--Production Workers	402
Laborers and Freight, Stock, and Material Movers, Hand	261
Cashiers	177
Team Assemblers	173
Customer Service Representatives	166
Office Clerks, General	127
Managers, All Other	116
Office and Administrative Support Workers, All Other	113
Extraction Workers, All Other	105
First-Line Supervisors of Production and Operating Workers	97
Industrial Truck and Tractor Operators	97
Welders, Cutters, Solderers, and Brazers	96
Retail Salespersons	88
Heavy and Tractor-Trailer Truck Drivers	87
Janitors and Cleaners, Except Maids and Housekeeping Cleaners	86
Construction Laborers	81
Electrical and Electronic Equipment Assemblers	75
Executive Secretaries and Executive Administrative Assistants	74

Source: Indiana Workforce Development, Indiana Career Connect.

SNAPSHOT

May Indiana Employment

Released June 23, 2026



Unemployment Rate

*seasonally adjusted

Unemployment Rate

3.3%



April 2026 Indiana

3.3%



National Unemployment Rate



LABOR FORCE PARTICIPATION RATE*

16+: **63.2%**

25-44: **83.9%**

25-54: **83.4%**



National Labor Force



Open Job Postings

94,059

Jobs

As of May 31, 2026



Weekly UI Continued Claims

19,068

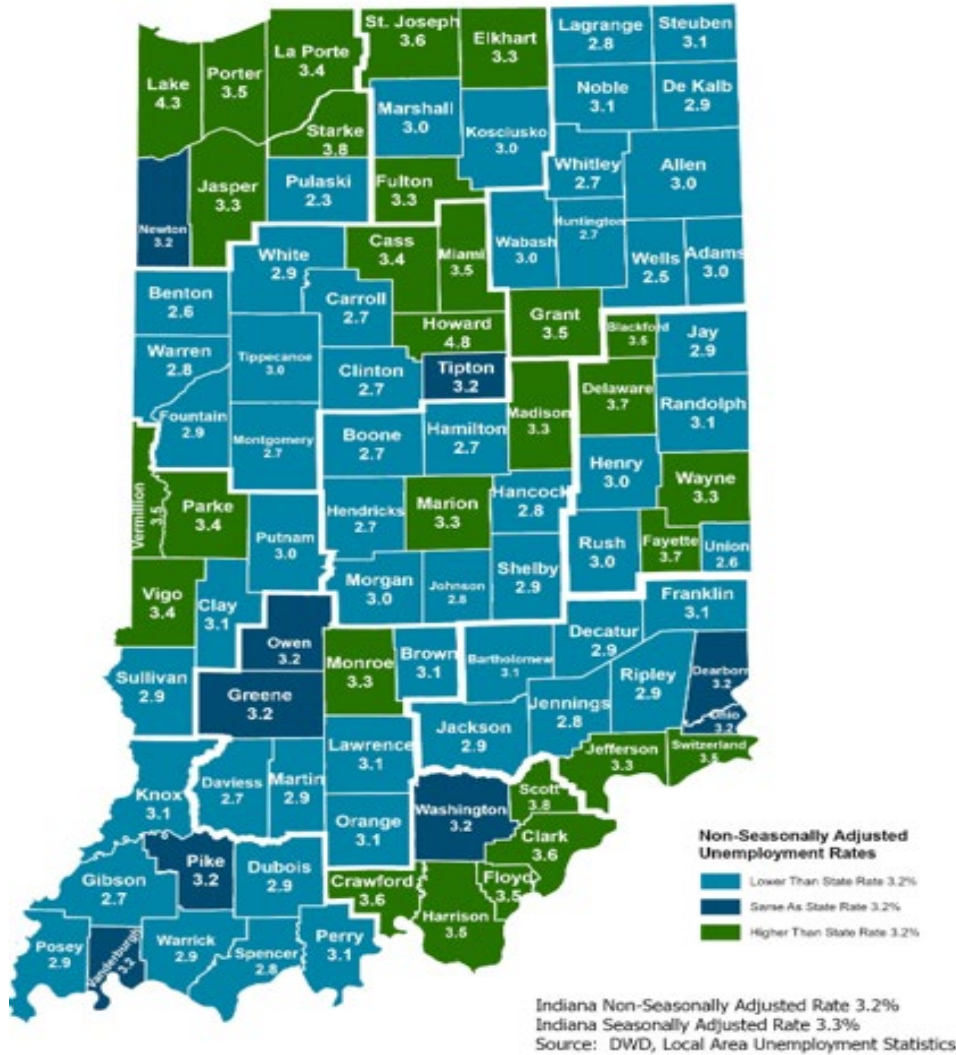


Filed Week Ending June 6, 2026

Source: Local Area Unemployment Statistics, Bureau of Labor Statistics; Indiana Career Connect

*The percentage of Hoosiers 16 and older who are either working or actively looking for work. Those not in the labor force include primarily, students, retirees and other non-working populations, such as individuals unable to work due to a disability or illness, or adults responsible for their family's childcare needs.

County Unemployment Rates May 2026



INDIANA DEPARTMENT OF
WORKFORCE
DEVELOPMENT

Questions?

**Please contact the DWD
Regional Workforce
Analyst listed below:**

Cassie Janes

[Indiana Department of
Workforce Development](http://Indiana Department of Workforce Development)
cjanes@dwd.in.gov