



## August 2025 Labor Market Review

Reported by: Kathy Jaworski

Regional Workforce Analyst

[kjaworski@dwd.in.gov](mailto:kjaworski@dwd.in.gov)

## Economic Growth Region 3

Statistical Data Report for August 2025, Released October 2025

### State Employment and Unemployment

Unemployment rates were higher in August in 3 states, lower in 2 states, and stable in 45 states and the District of Columbia, the U.S. Bureau of Labor Statistics reported. Earlier, though some had changes that were at least as large numerically as the significant changes.

Seventeen states and the District of Columbia had unemployment rate increases from August 2024, the largest of which was in Oregon (+0.8 percentage point). Nine states had over-the-year rate decreases, the largest of which was in Indiana (-0.8 percentage point). Twenty-four states had jobless rates that were not notably different from those a year earlier, though some had changes that were at least as large numerically as the significant changes.

The national unemployment rate, 4.3 percent, changed little over the month and from August 2024.

In August 2025, nonfarm payroll employment increased in 1 state, decreased in the District of Columbia, and was essentially unchanged in 49 states. Over the year, nonfarm payroll employment increased in 20 states and was essentially unchanged in 30 states and the District. South Dakota had the lowest jobless rate in August, 1.9 percent. The District of Columbia had the highest unemployment rate, 6.0 percent. The next highest rate was in California, 5.5 percent.



### Economic Growth Region (EGR) 3

Adams, Allen, DeKalb, Grant, Huntington, LaGrange, Noble, Steuben, Wabash, Wells, and Whitley Counties

### Unemployment Rates by State (seasonally adjusted): August 2025

**U.S. - 4.3%**

Illinois - 4.4%

**Indiana - 3.6%**

Kentucky - 4.7%

Michigan - 5.2%

Ohio - 5%

Source: U.S. Department of Labor, Bureau of Labor Statistics

### Unemployment Rank by County (of 92 counties): August 2025

#3 - Grant (4.7%)

#26 - Steuben (3.9%)

#27 - Adams (3.8%)

#35 - Allen (3.7%)

#52 - LaGrange (3.6%)

#53 - Noble (3.6%)

#56 - Wabash (3.6%)

#67 - DeKalb (3.4%)

#68 - Huntington (3.4%)

#78 - Whitley (3.3%)

#91 - Wells (3%)

Source: Indiana Department of Workforce Development, Research and Development, Local Area Unemployment Statistics

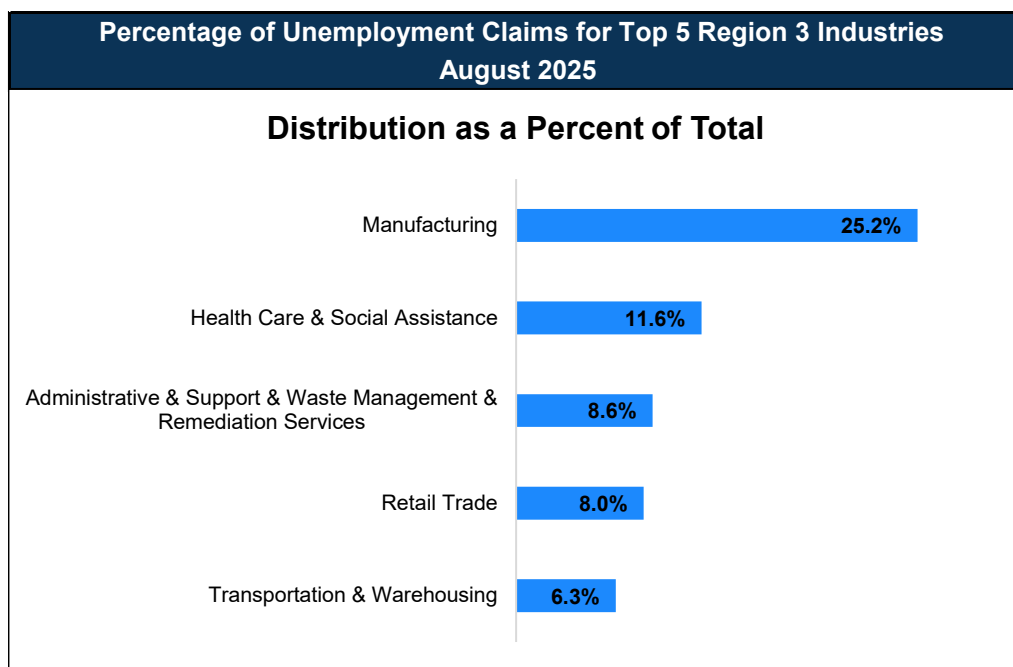
Labor Market Review EGR 3

August 2025 Labor Force Estimates (not seasonally adjusted)						
Area	Labor Force	Employed	Unemployed	Aug-25	Jul-25	Aug-24
U.S.	171,035,000	163,288,000	7,747,000	4.5%	4.6%	4.4%
IN	3,497,226	3,363,130	134,096	3.8%	4.2%	4.4%
EGR 3	396,546	381,947	14,599	3.7%	4.1%	4.1%
Fort Wayne MSA	235,534	227,072	8,462	3.6%	3.9%	3.9%
Adams Co.	15,970	15,369	601	3.8%	4.0%	4.0%
Allen Co.	201,982	194,579	7,403	3.7%	4.0%	4.0%
DeKalb Co.	22,113	21,368	745	3.4%	3.7%	3.9%
Grant Co.	30,400	28,965	1,435	4.7%	5.1%	5.3%
Huntington Co.	19,547	18,881	666	3.4%	3.7%	3.7%
LaGrange Co.	18,882	18,198	684	3.6%	4.6%	4.1%
Noble Co.	22,203	21,396	807	3.6%	4.5%	4.4%
Steuben Co.	17,260	16,586	674	3.9%	4.3%	4.3%
Wabash Co.	14,637	14,112	525	3.6%	4.0%	4.5%
Wells Co.	15,271	14,810	461	3.0%	3.3%	3.5%
Whitley Co.	18,281	17,683	598	3.3%	3.7%	3.8%
Fort Wayne	137,670	132,432	5,238	3.8%	4.1%	4.2%
Marion	12,132	11,501	631	5.2%	5.5%	5.9%

Source: Indiana Department of Workforce Development, Research & Analysis, Local Area Unemployment Statistics | Unemployment Statistics Released:09/25 | Notes: The data displayed are presented as estimates only. The most recent month's data are always preliminary and are revised when the next month's data are released.

Consumer Price Index (CPI-U Change), Unadjusted Percent Change to August 2025 from				
CPI Item	Aug-24	Jul-25	Aug-24	Jul-25
	U.S. City		Midwest Region*	
All Items	2.9%	0.3%	2.8%	0.3%
Food & Beverages	3.1%	0.4%	3.2%	0.7%
Housing	4.0%	0.3%	4.4%	0.1%
Apparel	0.2%	2.2%	1.2%	2.9%
Transportation	0.9%	0.2%	-0.1%	0.3%
Medical Care	3.4%	0.0%	2.8%	0.1%
Recreation	2.3%	-0.1%	2.6%	0.5%
Education & Communication	0.3%	0.3%	0.0%	0.0%
Other Goods & Services	3.9%	0.2%	2.8%	-0.1%

\*Midwest region = Midwest Urban Average. Midwest Region includes Illinois, Indiana, Iowa, Kansas, Michigan, Minnesota, Missouri, Nebraska, North Dakota, Ohio, South Dakota and Wisconsin | Source: U.S. Bureau of Labor Statistics



Source: Indiana Department of Workforce Development, Research and Analysis

## WARN Notices

WARN Notices for Region 3 for August 2025				
Company	City	County	# of workers affected	Notice Date

**There are no WARN Notices for August 2025 for Region 3.**

Source: Indiana Department of Workforce Development, WARN Notices | For information on WARN Act requirements, you may go to the U.S. Department of Labor Employment Training Administration Fact Sheet:

<https://www.doleta.gov/programs/factsht/warn.htm>

## Unemployment Claims: August 2025

### Region 3

#### Initial Claims

08/02/25 - 222(D)

08/09/25 - 237(D)

08/16/25 - 243(D)

08/23/25 - 185(D)

08/30/25 - 185(D)

#### Continued Claims

08/02/25 - 1,699

08/09/25 - 1,660

08/16/25 - 1,659

08/23/25 - 1,631

08/30/25 - 1,631

#### Total Claims

08/02/25 - 1,921

08/09/25 - 1,897

08/16/25 - 1,902

08/23/25 - 1,816

08/30/25 - 1,816

### State of Indiana

#### Initial Claims

08/02/25 - 2,550

08/09/25 - 2,607

08/16/25 - 2,574

08/23/25 - 2,653

08/30/25 - 2,361

#### Continued Claims

08/02/25 - 20,778

08/09/25 - 20,124

08/16/25 - 20,093

08/23/25 - 19,843

08/30/25 - 19,494

#### Total Claims

08/02/25 - 23,328

08/09/25 - 22,731

08/16/25 - 22,667

08/23/25 - 22,496

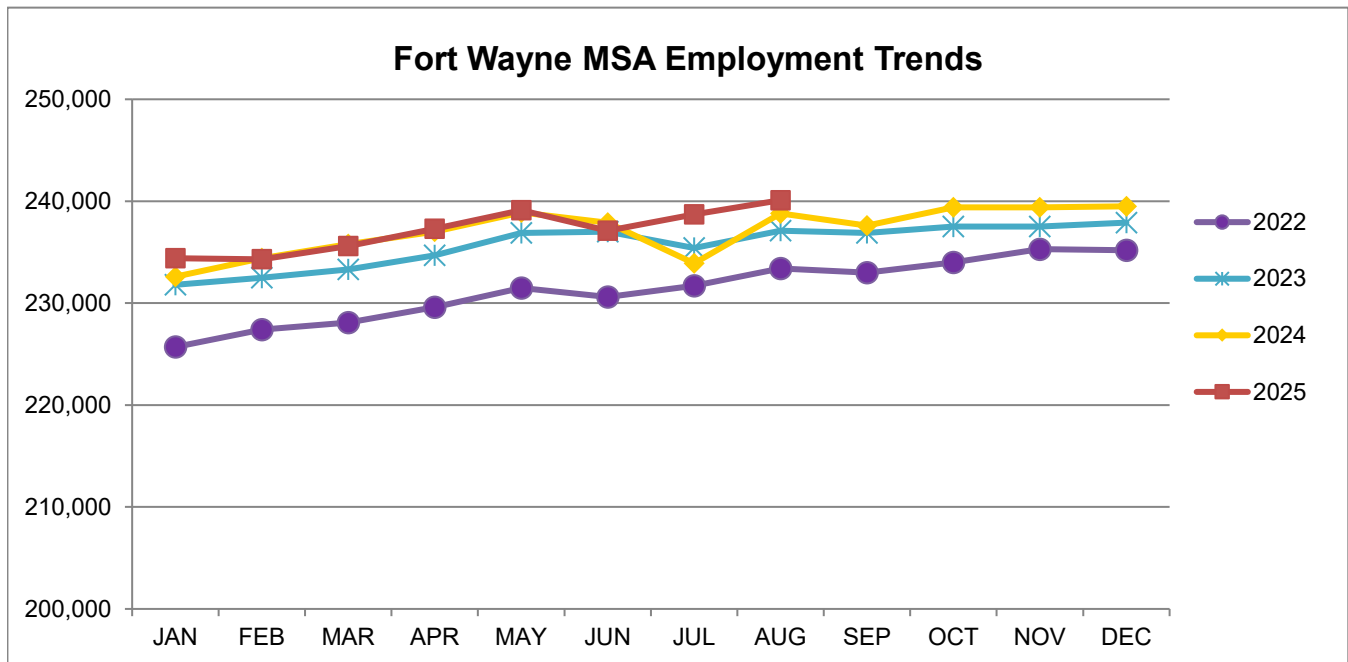
08/30/25 - 21,855

(D) indicates item is affected by non-disclosure issues relating to industry or ownership status |

Source: Indiana Department of Workforce Development, Research and Development

Fort Wayne MSA							
Wage and Salaried Employment	August 2025			# Change	% Change	# Change	% Change
Industry	Aug-25	Jul-25	Aug-24	Jul-25 to Aug-25		Aug-24 to Aug-25	
<b>Total Nonfarm</b>	<b>240,100</b>	<b>238,700</b>	<b>238,800</b>	<b>1,400</b>	<b>0.6%</b>	<b>1,300</b>	<b>0.5%</b>
<b>Total Private</b>	<b>218,900</b>	<b>219,200</b>	<b>217,100</b>	<b>-300</b>	<b>-0.1%</b>	<b>1,800</b>	<b>0.8%</b>
Goods Producing	51,400	51,600	52,400	-200	-0.4%	-1,000	-1.9%
Service Providing	188,700	187,100	186,400	1,600	0.9%	2,300	1.2%
Private Service Providing	167,500	167,600	164,700	-100	-0.1%	2,800	1.7%
Mining, Logging and Construction	13,300	13,400	13,700	-100	-0.8%	-400	-2.9%
Total Manufacturing	38,100	38,200	38,700	-100	-0.3%	-600	-1.6%
Durable Goods Manufacturing	27,700	27,800	28,400	-100	-0.4%	-700	-2.5%
Transportation Equipment Manufacturing	7,600	7,500	8,000	100	1.3%	-400	-5.0%
Trade, Transportation and Utilities	46,400	46,300	46,200	100	0.2%	200	0.4%
Wholesale Trade	11,200	11,200	11,000	0	0.0%	200	1.8%
Retail Trade	23,800	23,800	24,000	0	0.0%	-200	-0.8%
Transportation, Warehousing and Utilities	11,400	11,300	11,200	100	0.9%	200	1.8%
Information	1,800	1,800	1,900	0	0.0%	-100	-5.3%
Financial Activities	12,200	12,200	12,500	0	0.0%	-300	-2.4%
Professional and Business Services	24,400	24,400	22,800	0	0.0%	1,600	7.0%
Education and Health Services	46,500	46,500	45,200	0	0.0%	1,300	2.9%
Leisure and Hospitality	22,600	22,700	22,200	-100	-0.4%	400	1.8%
Other Services	13,600	13,700	13,900	-100	-0.7%	-300	-2.2%
<b>Total Government</b>	<b>21,200</b>	<b>19,500</b>	<b>21,700</b>	<b>1,700</b>	<b>8.7%</b>	<b>-500</b>	<b>-2.3%</b>
Federal Government	2,100	2,200	2,200	-100	-4.6%	-100	-4.6%
State Government	3,100	3,400	3,900	-300	-8.8%	-800	-20.5%
Local Government	16,000	13,900	15,600	2,100	15.1%	400	2.6%
Local Government Educational Services	9,100	6,100	9,100	3,000	49.2%	0	0.0%

Source: Indiana Dept of Workforce Development, Research and Analysis, Current Employment Statistics



Source: Indiana Department of Workforce Development, Research & Analysis, Current Employment Statistics | Note: Historical data for the most recent 4 years (both seasonally adjusted and not seasonally adjusted) are revised near the beginning of each calendar year, prior to the release of January estimates for statewide data.

Frequently Listed Jobs	
Top 20 job listings by number of postings in Region 3 in the past month	
Rank	Occupations
1	Registered Nurses
2	Heavy and Tractor-Trailer Truck Drivers
3	Retail Salespersons
4	Maintenance and Repair Workers, General
5	Food Service Managers
6	First-Line Supervisors of Retail Sales Workers
7	Customer Service Representatives
8	Production Workers, All Other
9	Licensed Practical and Licensed Vocational Nurses
10	Laborers and Freight, Stock, and Material Movers, Hand
11	Home Health and Personal Care Aides
12	Janitors and Cleaners, Except Maids and Housekeeping Cleaners
13	Driver/Sales Workers
14	Fast Food and Counter Workers
15	Food Preparation Workers
16	Health Technologists and Technicians, All Other
17	Nursing Assistants
18	Stockers and Order Fillers
19	Merchandise Displayers and Window Trimmers
20	Sales Representatives, Wholesale and Manufacturing, Except Technical and Scientific Products

Source: Lightcast

Applicant Pool	
Top 20 Occupations Desired by Applicants on their Resumes in the past 12 months	
Occupations	# of applicants
Production Workers, All Other	1,960
Assemblers and Fabricators, All Other	1,158
Helpers--Production Workers	764
Customer Service Representatives	628
Laborers and Freight, Stock, and Material Movers, Hand	491
Cashiers	484
Office Clerks, General	356
Industrial Truck and Tractor Operators	299
Packers and Packagers, Hand	294
Managers, All Other	280
Team Assemblers	279
First-Line Supervisors of Production and Operating Workers	272
Inspectors, Testers, Sorters, Samplers, and Weighers	264
Welders, Cutters, Solderers, and Brazers	255
Shipping, Receiving, and Traffic Clerks	251
Office and Administrative Support Workers, All Other	240
Retail Salespersons	236
Heavy and Tractor-Trailer Truck Drivers	230
Extraction Workers, All Other	203
Construction Laborers	191

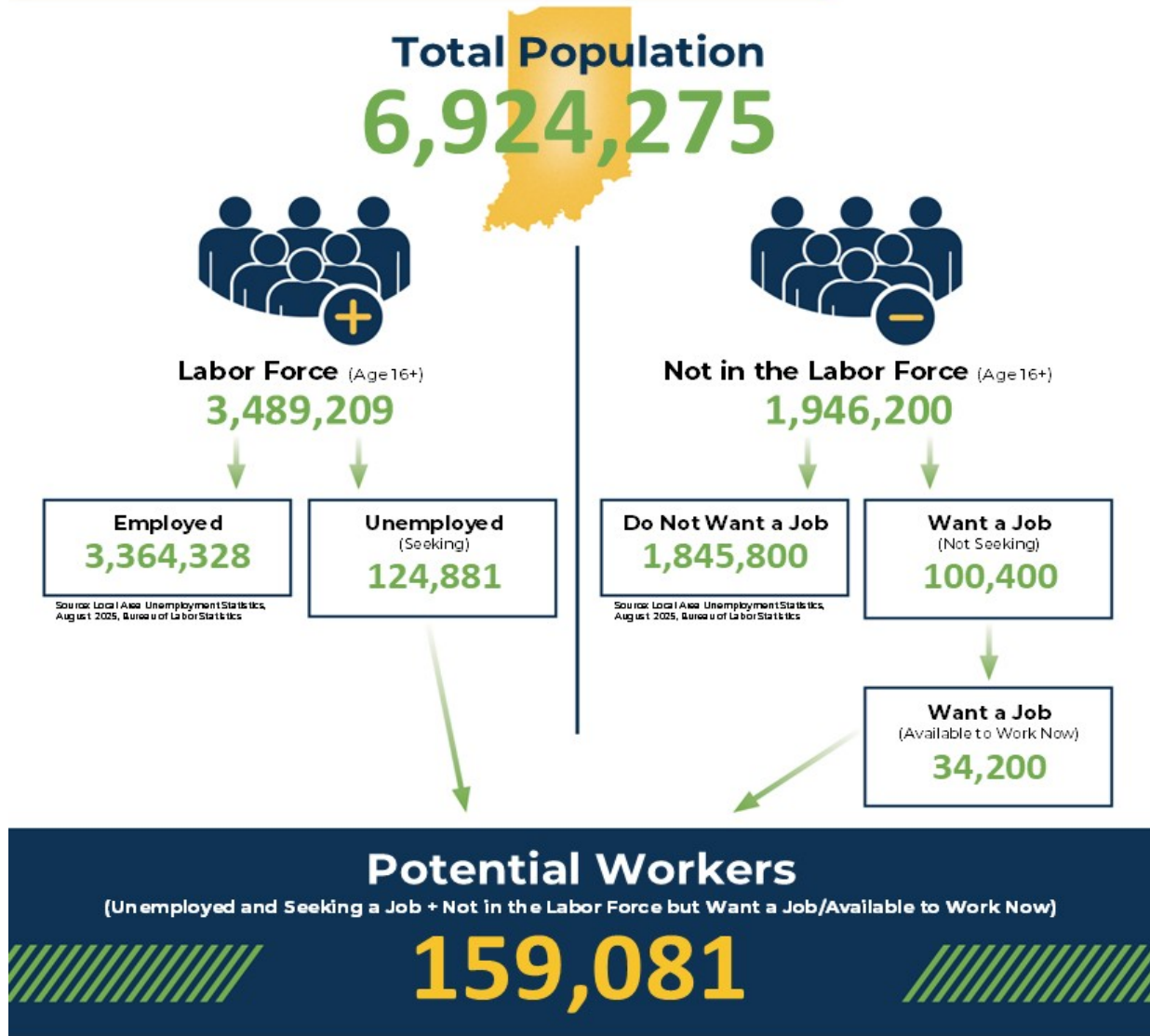
Source: Indiana Workforce Development, Indiana Career Connect



## BREAKDOWN

# August Indiana Labor Force

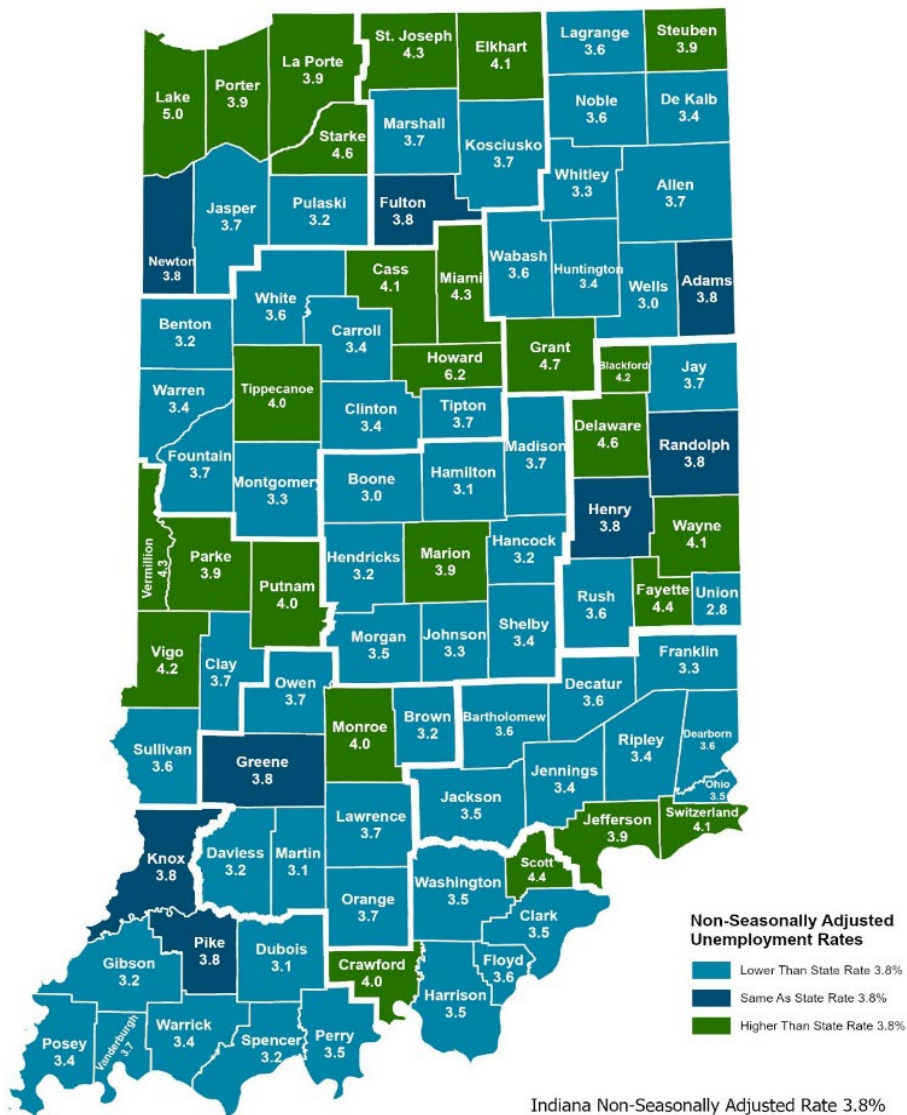
Released Sept. 19, 2025



More about the U.S. Bureau of Labor Statistics data sources used within:  
Local Area Unemployment Statistics (LAUS): Captures Indiana's labor force which includes those currently employed and those who are unemployed and actively seeking work.  
Current Population Survey (CPS): Captures individuals not participating in Indiana's labor force. This set includes non-participants that do not want a job (i.e. retirees and students) and those that want a job but are not actively seeking work.  
U.S. Census Bureau, Indiana Population 2024.

Resource Note on Using Current Population Survey (CPS) Subnational Data and Differences Between CPS and LAUS Estimates

## County Unemployment Rates August 2025



Indiana Non-Seasonally Adjusted Rate 3.8%  
 Indiana Seasonally Adjusted Rate 3.6%  
 Source: DWD, Local Area Unemployment Statistics



### Questions?

Please contact the  
Regional Workforce  
Analyst listed below:

**Kathy Jaworski**

[Indiana Department of  
Workforce Development](https://www.in.gov/dwd/)

EGR3

[kjaworski@dwd.IN.gov](mailto:kjaworski@dwd.IN.gov)