



HOOSIERS BY THE NUMBERS

Your premier source for labor market information for Indiana.

DWD

INDIANA DEPARTMENT OF
WORKFORCE
DEVELOPMENT

LABOR MARKET REVIEW



January 2026 Labor Market Review

Reported by: Kathy Jaworski

Regional Workforce Analyst

[Email Kathy](#)

kjaworski@dwd.in.gov

Tel: 219-841-6347

DWD

INDIANA DEPARTMENT OF
WORKFORCE
DEVELOPMENT



LABOR MARKET REVIEW

Economic Growth Region 2

Statistical Data Report for January 2026, Released April 2026

State Employment and Unemployment

Unemployment rates were higher in January in 1 state and stable in 49 states and the District of Columbia, the U.S. Bureau of Labor Statistics reported. Fourteen states and the District of Columbia had unemployment rate increases from January 2025, the largest of which was in Delaware (+1.3 percentage points). The only over-the-year rate decreases occurred in Indiana and Ohio (-0.5 percentage point each). Thirty-four states had jobless rates that were not notably different from those of a year earlier, though some had changes that were at least as large numerically as the significant changes. The national unemployment rate, 4.3 percent, changed little over the month but was 0.3 percentage point higher than in January 2025.

In January 2026, nonfarm payroll employment increased in 5 states, decreased in the District of Columbia, and was essentially unchanged in 45 states. Employment increased in California (+93,500, or +0.5 percent), Texas (+40,100, or +0.3 percent), Illinois (+18,000, or +0.3 percent), Indiana (+11,200, or +0.3 percent), and Iowa (+6,400, or +0.4 percent). Employment decreased in the District (-5,400, or -0.7 percent). Over the year, nonfarm payroll employment increased in 4 states, decreased in Maryland and the District, and was essentially unchanged in 45 states.



Economic Growth Region (EGR) 2

Elkhart, Fulton, Kosciusko, Marshall and St. Joseph Counties

Unemployment Rates by State (seasonally adjusted): January 2026

U.S. - 4.3%

Illinois - 4.9%

Indiana - 3.4%

Kentucky - 4.3%

Michigan - 5%

Ohio - 4.3%

Source: U.S. Department of Labor, Bureau of Labor Statistics

Unemployment Rank by County (of 92 counties): January 2026

#10 - Fulton (4%)

#32 - St. Joseph (3.4%)

#65 - Elkhart (2.9%)

#68 - Kosciusko (2.9%)

#69 - Marshall (2.9%)

Source: Indiana Department of Workforce Development, Research and Development, Local Area Unemployment Statistics

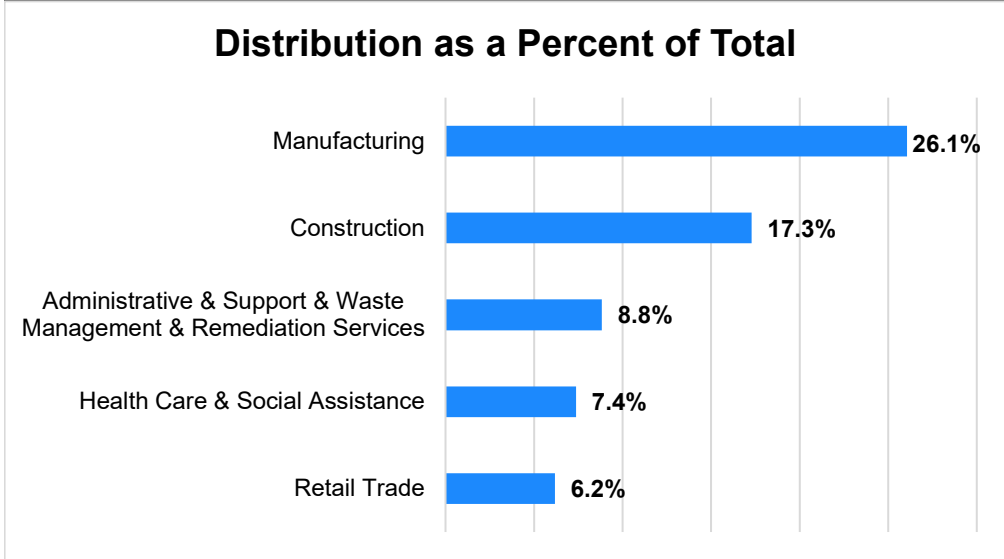
January 2026 Labor Force Estimates (not seasonally adjusted)						
Area	Labor Force	Employed	Unemployed	Jan-26	Dec-25	Jan-25
U.S.	169,612,000	161,670,000	7,942,000	4.7%	4.1%	4.4%
IN	3,473,602	3,359,879	113,723	3.3%	2.6%	4.2%
EGR 2	300,323	290,841	9,482	3.2%	2.7%	4.4%
Elkhart-Goshen MSA	99,032	96,116	2,916	2.9%	2.6%	4.4%
South Bend-Mishawaka MSA	153,127	147,469	5,658	3.7%	3.2%	4.8%
Elkhart Co.	99,032	96,116	2,916	2.9%	2.6%	4.4%
Fulton Co.	9,289	8,918	371	4.0%	3.1%	4.7%
Kosciusko Co.	39,383	38,243	1,140	2.9%	2.4%	4.1%
Marshall Co.	22,981	22,305	676	2.9%	2.5%	3.9%
St Joseph Co.	129,638	125,259	4,379	3.4%	3.0%	4.6%
Elkhart	25,055	24,233	822	3.3%	3.0%	5.2%
Goshen	15,334	14,870	464	3.0%	2.5%	4.7%
Mishawaka	24,779	23,980	799	3.2%	2.9%	4.8%
Plymouth	5,663	5,499	164	2.9%	2.3%	3.9%
South Bend	47,349	45,570	1,779	3.8%	3.3%	5.0%
Warsaw	7,901	7,667	234	3.0%	2.5%	4.1%

Source: Indiana Department of Workforce Development, Research & Analysis, Local Area Unemployment Statistics | Unemployment Statistics Released:04/26 | Notes: The data displayed are presented as estimates only. The most recent month's data are always preliminary and are revised when the next month's data are released.

Consumer Price Index (CPI-U Change), Unadjusted Percent Change to January 2026 from				
CPI Item	Jan-25	Dec-25	Jan-25	Dec-25
	U.S. City		Midwest Region*	
All Items	2.4%	0.4%	2.4%	0.4%
Food & Beverages	2.8%	0.4%	2.0%	0.3%
Housing	3.4%	0.4%	4.5%	0.6%
Apparel	1.7%	2.0%	2.2%	2.7%
Transportation	-1.1%	-0.4%	-2.4%	-0.4%
Medical Care	3.2%	0.5%	2.6%	0.2%
Recreation	2.5%	0.8%	4.2%	0.6%
Education & Communication	0.5%	0.3%	1.0%	0.9%
Other Goods & Services	5.9%	1.5%	3.1%	-0.4%

*Midwest region = Midwest Urban Average. Midwest Region includes Illinois, Indiana, Iowa, Kansas, Michigan, Minnesota, Missouri, Nebraska, North Dakota, Ohio, South Dakota and Wisconsin | Source: U.S. Bureau of Labor Statistics

Percentage of Unemployment Claims for Top 5 Region 2 Industries January 2026



Source: Indiana Department of Workforce Development, Research and Analysis

WARN Notices

WARN Notices for Region 2 for January 2026				
Company	City	County	# affected	Notice Date
Wabash	Goshen	Elkhart	144	1/5/2026

Source: Indiana Department of Workforce Development, WARN Notices | For information on WARN Act requirements, you may go to the U.S. Department of Labor Employment Training Administration Fact Sheet:

<https://www.doleta.gov/programs/factsht/warn.htm>

Unemployment Claims: January 2026

Region 2

Initial Claims

01/03/26 - 553
01/10/26 - 681
01/17/26 - 352
01/24/26 - 314
01/31/26 - 343

Continued Claims

01/03/26 - 2,348
01/10/26 - 2,082
01/17/26 - 1,881
01/24/26 - 1,919
01/31/26 - 2,090

Total Claims

01/03/26 - 2,901
01/10/26 - 2,763
01/17/26 - 2,233
01/24/26 - 2,233
01/31/26 - 2,433

State of Indiana

Initial Claims

01/03/26 - 4,665
01/10/26 - 7,494
01/17/26 - 3,789
01/24/26 - 3,186
01/31/26 - 3,722

Continued Claims

01/03/26 - 28,001
01/10/26 - 29,612
01/17/26 - 28,556
01/24/26 - 26,440
01/31/26 - 27,470

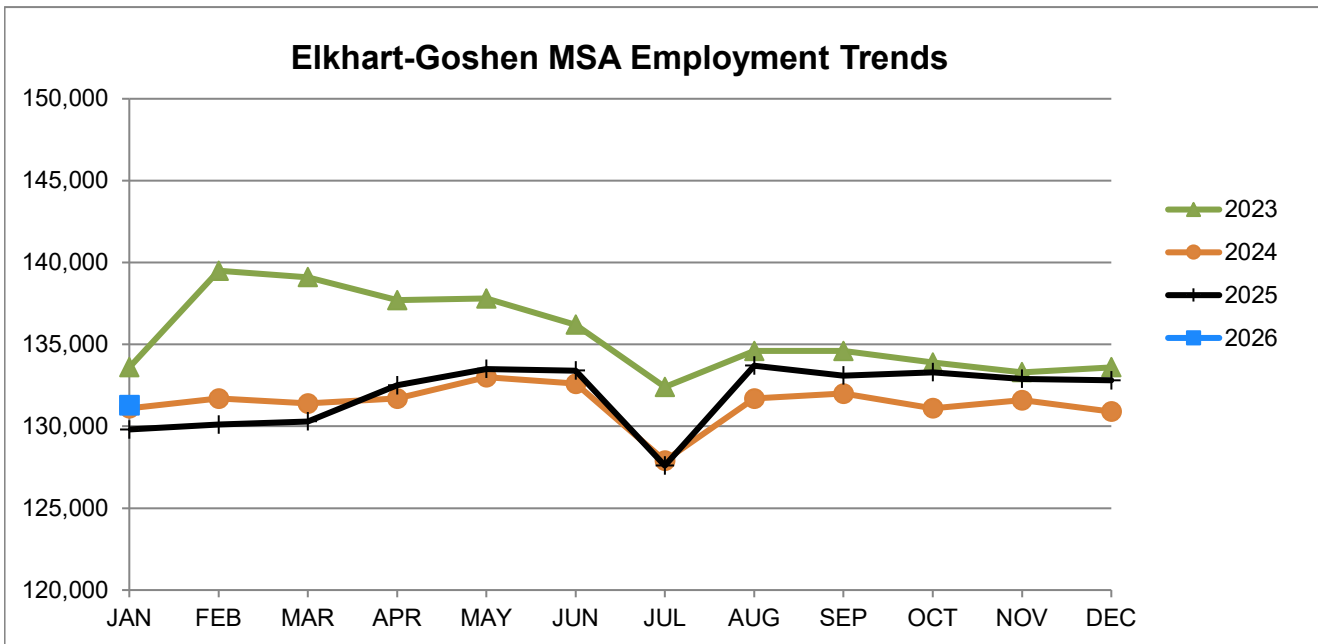
Total Claims

01/03/26 - 32,666
01/10/26 - 37,106
01/17/26 - 32,345
01/24/26 - 29,626
01/31/26 - 31,192

Notes: (D) Indicates one or more counties are excluded due to non-disclosure issues | Numbers subject to weekly revision | Source: Indiana Department of Workforce Development, Research and Analysis

Elkhart-Goshen MSA							
Wage and Salaried Employment	January 2026			# Change	% Change	# Change	% Change
Industry	Jan-26	Dec-25	Jan-25	Dec-25 to Jan-26	Jan-25 to Jan-26	Jan-25 to Jan-26	Jan-25 to Jan-26
Total Nonfarm	131,300	132,800	129,800	-1,500	-1.1%	1,500	1.2%
Total Private	122,800	124,100	120,800	-1,300	-1.1%	2,000	1.7%
Goods Producing	65,600	65,900	63,900	-300	-0.5%	1,700	2.7%
Service-Providing	65,700	66,900	65,900	-1,200	-1.8%	-200	-0.3%
Private Service Providing	57,200	58,200	56,900	-1,000	-1.7%	300	0.5%
Mining, Logging and Construction	4,600	4,700	4,400	-100	-2.1%	200	4.6%
Manufacturing	61,000	61,200	59,500	-200	-0.3%	1,500	2.5%
Durable Goods	52,300	52,400	50,600	-100	-0.2%	1,700	3.4%
Transportation Equipment Manufacturing	33,800	34,000	32,500	-200	-0.6%	1,300	4.0%
Motor Vehicle Body and Trailer Manufacturing	29,000	29,200	27,900	-200	-0.7%	1,100	3.9%
Trade, Transportation, and Utilities	19,800	20,200	19,800	-400	-2.0%	0	0.0%
Wholesale Trade	7,800	7,900	7,700	-100	-1.3%	100	1.3%
Retail Trade	9,500	9,700	9,500	-200	-2.1%	0	0.0%
Transportation, Warehousing, and Utilities	2,500	2,600	2,600	-100	-3.9%	-100	-3.9%
Information	500	500	600	0	0.0%	-100	-16.7%
Financial Activities	3,200	3,300	3,200	-100	-3.0%	0	0.0%
Professional and Business Services	9,600	9,800	9,600	-200	-2.0%	0	0.0%
Education and Health Services	12,200	12,300	12,300	-100	-0.8%	-100	-0.8%
Leisure and Hospitality	6,900	7,100	7,000	-200	-2.8%	-100	-1.4%
Other Services	5,000	5,000	4,400	0	0.0%	600	13.6%
Government	8,500	8,700	9,000	-200	-2.3%	-500	-5.6%
Federal Government	200	200	300	0	0.0%	-100	-33.3%
State Government	300	300	300	0	0.0%	0	0.0%
Local Government	8,000	8,200	8,400	-200	-2.4%	-400	-4.8%
Local Government Educational Services	5,400	5,400	5,700	0	0.0%	-300	-5.3%

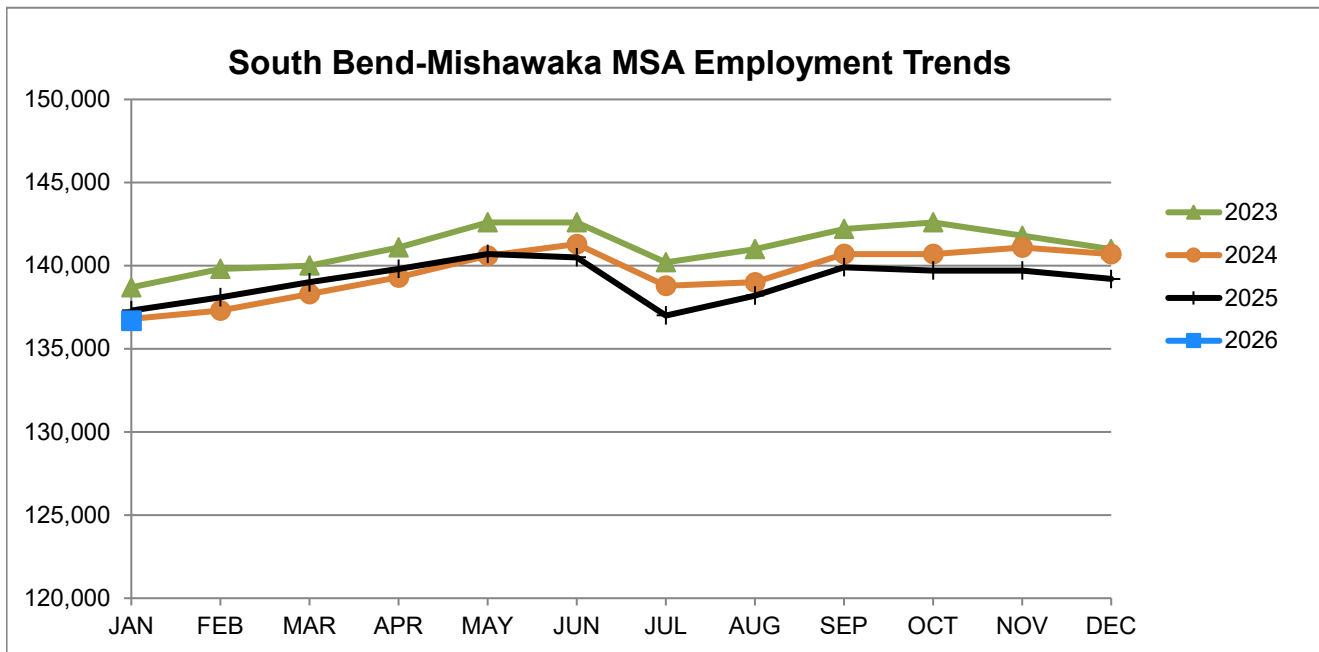
Source: Indiana Dept of Workforce Development, Research and Analysis, Current Employment Statistics



Source: Indiana Department of Workforce Development, Research & Analysis, Current Employment Statistics | Note: Historical data for the most recent 4 years (both seasonally adjusted and not seasonally adjusted) are revised near the beginning of each calendar year, prior to the release of January estimates for statewide data.

South Bend-Mishawaka MSA							
Wage and Salaried Employment	January 2026			# Change	% Change	# Change	% Change
Industry	Jan-26	Dec-25	Jan-25	Dec-25 to Jan-26	Jan-25 to Jan-26	Dec-25 to Jan-26	Jan-25 to Jan-26
Total Nonfarm	136,700	139,200	137,300	-2,500	-1.8%	-600	-0.4%
Total Private	121,500	123,600	122,200	-2,100	-1.7%	-700	-0.6%
Goods Producing	21,200	21,200	21,000	0	0.0%	200	1.0%
Service Providing	115,500	118,000	116,300	-2,500	-2.1%	-800	-0.7%
Private Service Providing	100,300	102,400	101,200	-2,100	-2.1%	-900	-0.9%
Mining, Logging and Construction	6,400	6,500	6,100	-100	-1.5%	300	4.9%
Manufacturing	14,800	14,700	14,900	100	0.7%	-100	-0.7%
Trade, Transportation and Utilities	24,700	25,300	24,900	-600	-2.4%	-200	-0.8%
Wholesale Trade	6,300	6,400	6,500	-100	-1.6%	-200	-3.1%
Retail Trade	14,000	14,200	13,900	-200	-1.4%	100	0.7%
General Merchandise Stores	3,600	3,700	3,400	-100	-2.7%	200	5.9%
Transportation, Warehousing and Utilities	4,400	4,700	4,500	-300	-6.4%	-100	-2.2%
Information	2,200	2,400	1,700	-200	-8.3%	500	29.4%
Financial Activities	5,900	6,000	5,900	-100	-1.7%	0	0.0%
Professional & Business Services	13,100	13,400	12,600	-300	-2.2%	500	4.0%
Educational & Health Services	34,200	34,700	35,300	-500	-1.4%	-1,100	-3.1%
Hospitals	7,100	7,100	7,100	0	0.0%	0	0.0%
Leisure & Hospitality	14,200	14,500	14,700	-300	-2.1%	-500	-3.4%
Food Services and Drinking Places	10,600	10,800	11,000	-200	-1.9%	-400	-3.6%
Other Services	6,000	6,100	6,100	-100	-1.6%	-100	-1.6%
Total Government	15,200	15,600	15,100	-400	-2.6%	100	0.7%
Federal Government	900	900	900	0	0.0%	0	0.0%
State Government	2,300	2,500	2,400	-200	-8.0%	-100	-4.2%
Local Government	12,000	12,200	11,800	-200	-1.6%	200	1.7%
Local Government Educational Services	6,400	6,600	6,200	-200	-3.0%	200	3.2%

Source: Indiana Dept of Workforce Development, Research and Analysis, Current Employment Statistics



Source: Indiana Department of Workforce Development, Research & Analysis, Current Employment Statistics | Note: Historical data for the most recent 4 years (both seasonally adjusted and not seasonally adjusted) are revised near the beginning of each calendar year, prior to the release of January estimates for statewide data.

Frequently Listed Jobs	
Top 20 job listings by number of openings in Region 2 in the past month	
Rank	Occupations
1	Registered Nurses
2	Heavy and Tractor-Trailer Truck Drivers
3	Retail Salespersons
4	Maintenance and Repair Workers, General
5	Production Workers, All Other
6	First-Line Supervisors of Retail Sales Workers
7	Laborers and Freight, Stock, and Material Movers, Hand
8	Home Health and Personal Care Aides
9	Licensed Practical and Licensed Vocational Nurses
10	Radiologic Technologists and Technicians
11	Customer Service Representatives
12	Food Service Managers
13	Janitors and Cleaners, Except Maids and Housekeeping Cleaners
14	Nursing Assistants
15	Food Preparation Workers
16	Stockers and Order Fillers
17	Coaches and Scouts
18	Merchandise Displayers and Window Trimmers
19	Physicians, All Other
20	Family Medicine Physicians

Source: Lightcast

Applicant Pool	
Top 20 occupations desired by applicants on their resumes in the past 12 months	
Occupations	# of applicants
Production Workers, All Other	919
Assemblers and Fabricators, All Other	558
Helpers--Production Workers	413
Customer Service Representatives	296
Laborers and Freight, Stock, and Material Movers, Hand	270
Office Clerks, General	213
Cashiers	206
First-Line Supervisors of Production and Operating Workers	155
Team Assemblers	147
Heavy and Tractor-Trailer Truck Drivers	146
Industrial Truck and Tractor Operators	142
Shipping, Receiving, and Traffic Clerks	129
Office and Administrative Support Workers, All Other	127
Retail Salespersons	120
Receptionists and Information Clerks	120
Welders, Cutters, Solderers, and Brazers	119
Inspectors, Testers, Sorters, Samplers, and Weighers	111
Packers and Packagers, Hand	103
Managers, All Other	98
General and Operations Managers	89

Source: Indiana Workforce Development, Indiana Career Connect

Statewide Average Weekly Hours & Earnings by Industry for January 2026			
Industry	Average Earnings (per hour)	Average # of hours worked (weekly)	Average Earnings (per week)
Construction	\$39.28	37.9	\$1,488.71
Manufacturing	\$25.78	43.2	\$1,113.70
Durable Goods	\$26.35	44.3	\$1,167.31
Fabricated Metal Product Manufacturing	\$24.53	41.8	\$1,025.35
Transportation Equipment Manufacturing	\$28.06	38.4	\$1,077.50
Non-Durable Goods	\$24.33	40.7	\$990.23
Retail Trade	\$20.38	29.2	\$595.10
Financial Activities	\$28.88	37.9	\$1,094.55
Health Care and Social Assistance	\$30.62	33.1	\$1,013.52
Accommodation and Food Services	\$17.20	23.2	\$399.04

Source: Indiana Department of Workforce Development, Current Employment Statistics

SNAPSHOT

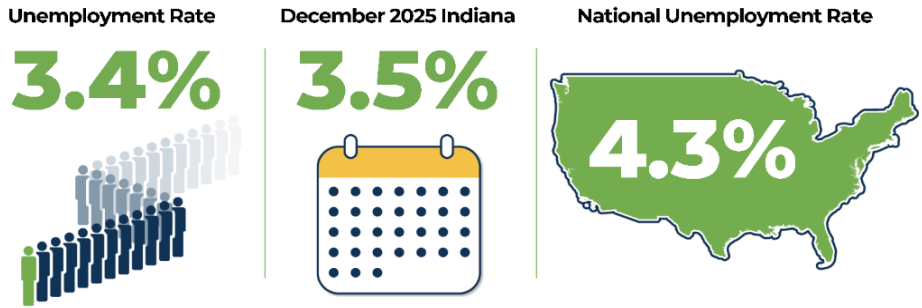
January Indiana Employment

Released April 8, 2026



Unemployment Rate

*seasonally adjusted



LABOR FORCE PARTICIPATION RATE*



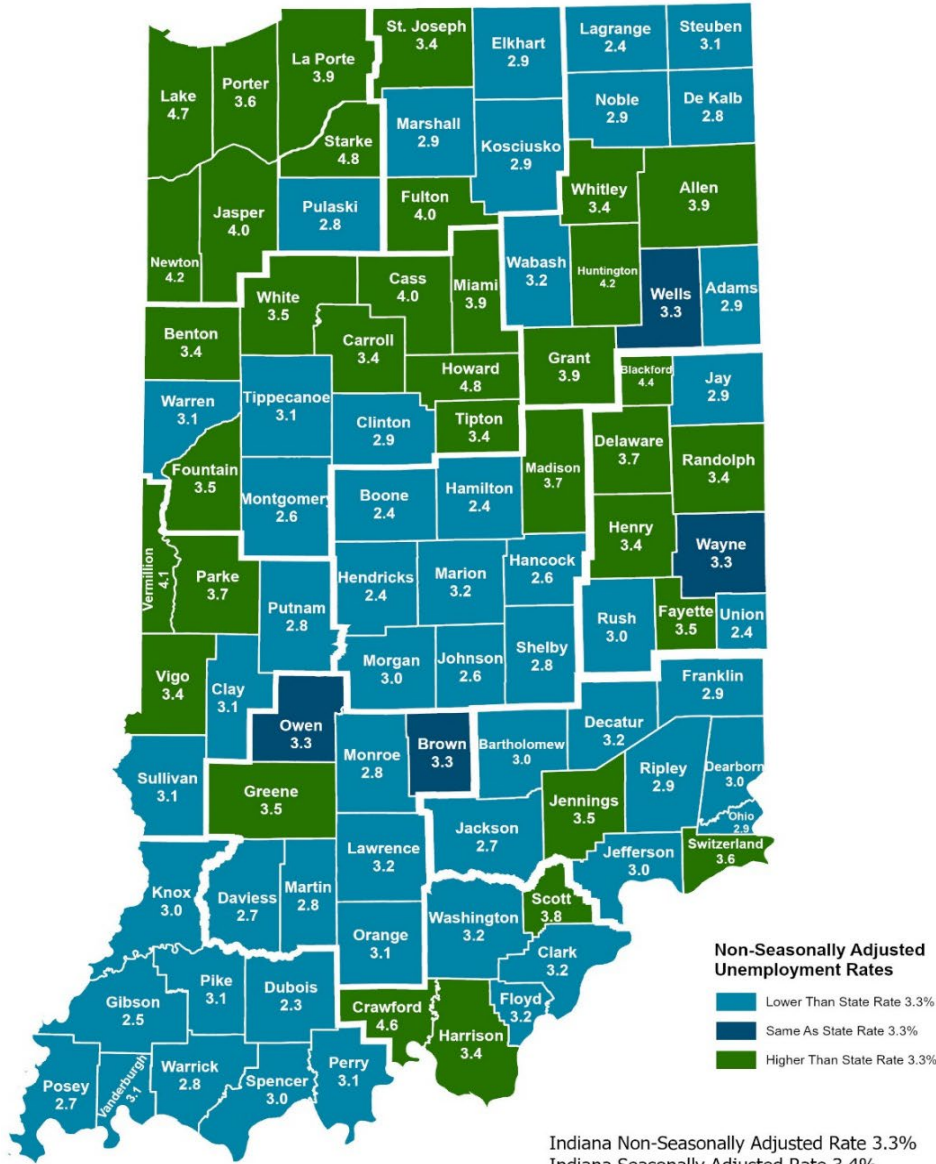
Source: Local Area Unemployment Statistics, Bureau of Labor Statistics; Indiana Career Connect

* The percentage of Hoosiers 16 and older who are either working or actively looking for work. Those not in the labor force include primarily, students, retirees and other non-working populations, such as individuals unable to work due to a disability or illness, or adults responsible for their family's childcare needs.

County Unemployment Rates January 2026



INDIANA DEPARTMENT OF
WORKFORCE
DEVELOPMENT



**Non-Seasonally Adjusted
Unemployment Rates**

- Lower Than State Rate 3.3%
- Same As State Rate 3.3%
- Higher Than State Rate 3.3%

Indiana Non-Seasonally Adjusted Rate 3.3%
Indiana Seasonally Adjusted Rate 3.4%
Source: DWD, Local Area Unemployment Statistics

Questions?

Please contact the DWD
Regional Workforce
Analyst listed below:

Kathy Jaworski

[Indiana Department of
Workforce Development](http://Indiana Department of Workforce Development)

219-841-6347

kjaworski@dwd.in.gov