



# HOOSIERS BY THE NUMBERS

Your premier source for labor market information for Indiana.

**DWD**

INDIANA DEPARTMENT OF  
**WORKFORCE**  
DEVELOPMENT

## LABOR MARKET REVIEW



## June 2025 Labor Market Review

**Reported by: Kathy Jaworski**

Regional Workforce Analyst

[Email Kathy](#)

[kjaworski@dwd.in.gov](mailto:kjaworski@dwd.in.gov)

Tel: 219-841-6347

**DWD**

INDIANA DEPARTMENT OF  
**WORKFORCE**  
DEVELOPMENT





## LABOR MARKET REVIEW

# Economic Growth Region 2

Statistical Data Report for June 2025, Released August 2025

## State Employment and Unemployment

Unemployment rates were lower in June in 2 states, higher in 1 state, and stable in 47 states and the District of Columbia, the U.S. Bureau of Labor Statistics reported. South Dakota had the lowest jobless rate in June, 1.8 percent. The District of Columbia had the highest unemployment rate, 5.9 percent. The next highest rates were in California and Nevada, 5.4 percent each.

Nineteen states and the District of Columbia had unemployment rate increases from June 2024, the largest of which was in Mississippi (+1.1 percentage points). Four states had over-the-year rate decreases, the largest of which was in Indiana (-0.6 percentage point). The national unemployment rate, 4.1 percent, changed little over the month and was the same as in June 2024.

In June 2025, nonfarm payroll employment increased in 1 state and was essentially unchanged in 49 states and the District of Columbia. Over the year, nonfarm payroll employment increased in 15 states and was essentially unchanged in 35 states and the District.



## Economic Growth Region (EGR) 2

Elkhart, Fulton, Kosciusko, Marshall and St. Joseph Counties

## Unemployment Rates by State (seasonally adjusted): June 2025

**U.S. - 4.1%**

Illinois - 4.6%

**Indiana - 3.6%**

Kentucky - 4.9%

Michigan - 5.3%

Ohio - 4.9%

Source: U.S. Department of Labor, Bureau of Labor Statistics

## Unemployment Rank by County (of 92 counties): June 2025

#13 - St. Joseph (4.1%)

#17 - Elkhart (3.9%)

#18 - Fulton (3.9%)

#43 - Kosciusko (3.6%)

#48 - Marshall (3.5%)

Source: Indiana Department of Workforce Development, Research and Development, Local Area Unemployment Statistics

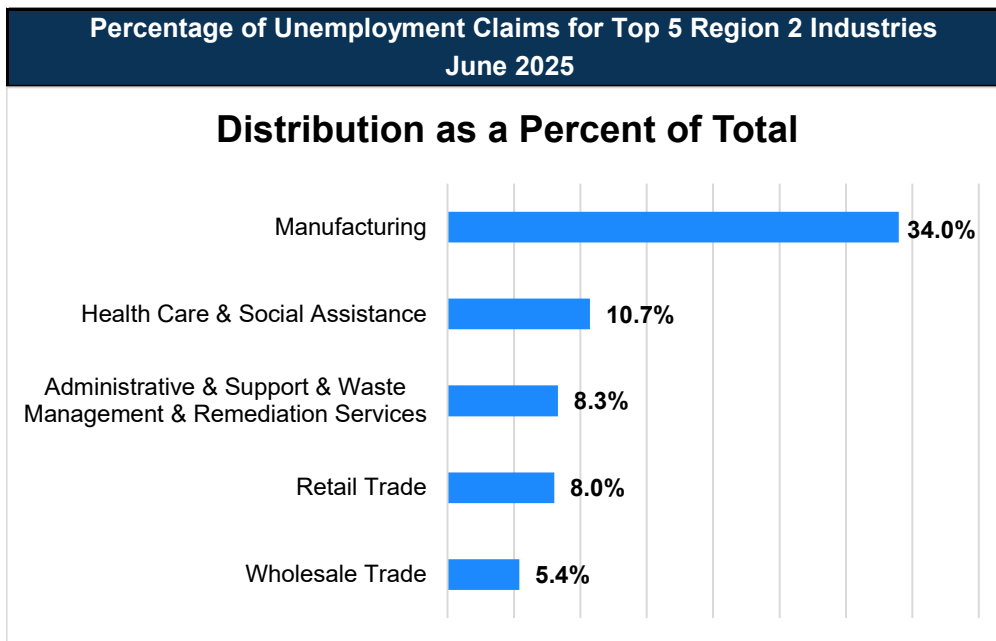
June 2025 Labor Force Estimates (not seasonally adjusted)						
Area	Labor Force	Employed	Unemployed	Jun-25	May-25	Jun-24
U.S.	171,343,000	163,883,000	7,460,000	4.4%	4.0%	4.3%
IN	3,540,325	3,408,667	131,658	3.7%	3.4%	4.4%
EGR 2	309,793	297,655	12,138	3.9%	3.6%	4.9%
Elkhart-Goshen MSA	100,331	96,397	3,934	3.9%	3.6%	5.1%
South Bend-Mishawaka MSA	160,023	153,026	6,997	4.4%	4.0%	5.2%
Elkhart Co.	100,331	96,397	3,934	3.9%	3.6%	5.1%
Fulton Co.	9,865	9,484	381	3.9%	3.5%	4.3%
Kosciusko Co.	40,765	39,298	1,467	3.6%	3.3%	4.5%
Marshall Co.	23,761	22,941	820	3.5%	3.2%	4.4%
St Joseph Co.	135,071	129,535	5,536	4.1%	3.7%	5.1%
Elkhart	25,509	24,332	1,177	4.6%	4.2%	5.7%
Goshen	15,534	14,944	590	3.8%	3.6%	5.2%
Mishawaka	25,883	24,793	1,090	4.2%	3.8%	5.4%
Plymouth	5,843	5,642	201	3.4%	3.1%	4.1%
South Bend	49,314	47,135	2,179	4.4%	4.0%	5.3%
Warsaw	8,215	7,902	313	3.8%	3.5%	4.6%

Source: Indiana Department of Workforce Development, Research & Analysis, Local Area Unemployment Statistics | Unemployment Statistics Released:07/25 | Notes: The data displayed are presented as estimates only. The most recent month's data are always preliminary and are revised when the next month's data are released.



Consumer Price Index (CPI-U Change), Unadjusted Percent Change to June 2025 from				
CPI Item	Jun-24	May-25	Jun-24	May-25
	U.S. City		Midwest Region*	
All Items	2.7%	0.3%	3.0%	0.7%
Food & Beverages	2.9%	0.3%	3.0%	0.6%
Housing	4.0%	0.5%	5.0%	1.1%
Apparel	-0.5%	-0.3%	0.9%	-0.2%
Transportation	-0.1%	0.2%	-0.6%	0.4%
Medical Care	2.8%	0.5%	2.9%	1.1%
Recreation	2.1%	0.2%	2.9%	0.0%
Education & Communication	0.5%	0.1%	0.5%	0.3%
Other Goods & Services	3.7%	0.4%	3.8%	0.9%

\*Midwest region = Midwest Urban Average. Midwest Region includes Illinois, Indiana, Iowa, Kansas, Michigan, Minnesota, Missouri, Nebraska, North Dakota, Ohio, South Dakota and Wisconsin | Source: U.S. Bureau of Labor Statistics



Source: Indiana Department of Workforce Development, Research and Analysis

## WARN Notices

WARN Notices for Region 2 for June 2025				
Company	City	County	# affected	Notice Date

**There are no WARN Notices for June 2025 for Region 2.**

Source: Indiana Department of Workforce Development, WARN Notices | For information on WARN Act requirements, you may go to the U.S. Department of Labor Employment Training Administration Fact Sheet:

<https://www.doleta.gov/programs/factsht/warn.htm>

## Unemployment Claims: June 2025

### Region 2

#### Initial Claims

06/07/25 - 670

06/14/25 - 242(D)

06/21/25 - 186(D)

06/28/25 - 247(D)

#### Continued Claims

06/07/25 - 1,524

06/14/25 - 1,452

06/21/25 - 1,437

06/28/25 - 1,560

#### Total Claims

06/07/25 - 2,194

06/14/25 - 1,694

06/21/25 - 1,623

06/28/25 - 1,807

### State of Indiana

#### Initial Claims

06/07/25 - 3,454

06/14/25 - 2,707

06/21/25 - 2,436

06/28/25 - 2,502

#### Continued Claims

06/07/25 - 20,541

06/14/25 - 20,394

06/21/25 - 20,787

06/28/25 - 20,545

#### Total Claims

06/07/25 - 23,995

06/14/25 - 23,101

06/21/25 - 23,223

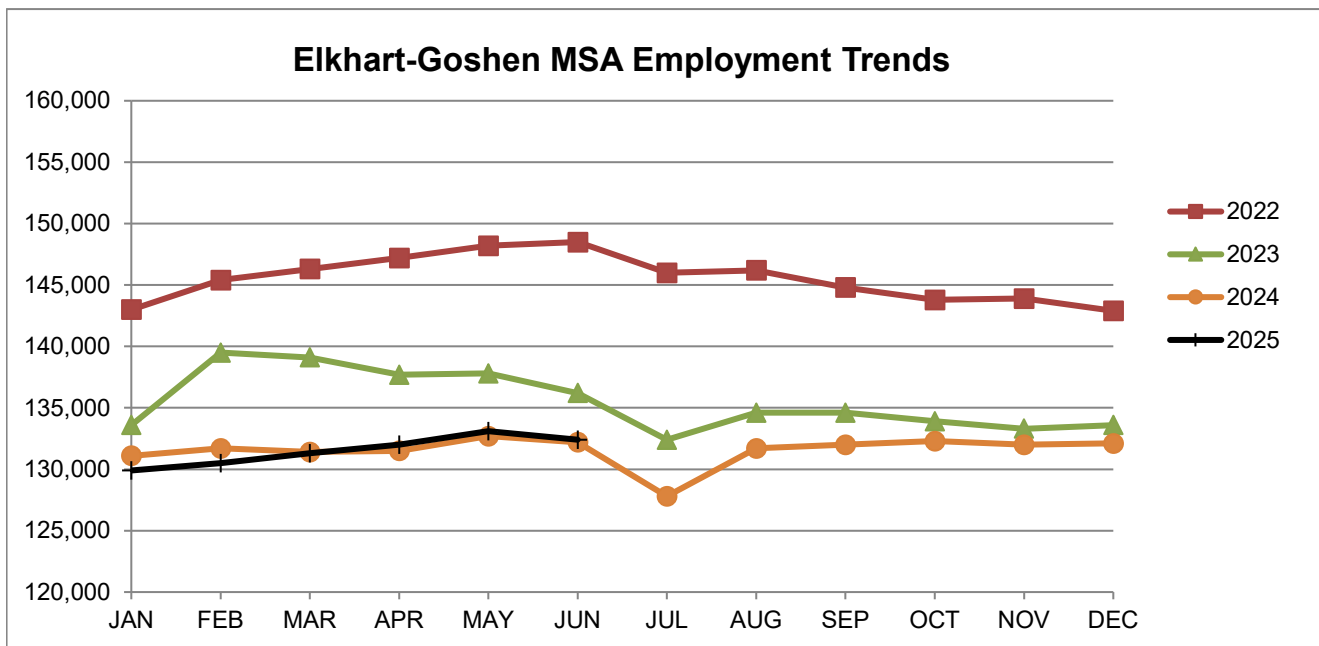
06/28/25 - 23,047

Notes: (D) Indicates one or more counties are excluded due to non-disclosure issues | Numbers subject to weekly revision | Source: Indiana Department of Workforce Development, Research and Analysis



Elkhart-Goshen MSA							
Wage and Salaried Employment	June 2025			# Change	% Change	# Change	% Change
Industry	Jun-25	May-25	Jun-24	May-25 to Jun-25		Jun-24 to Jun-25	
<b>Total Nonfarm</b>	<b>132,400</b>	<b>133,100</b>	<b>132,200</b>	<b>-700</b>	<b>-0.5%</b>	<b>200</b>	<b>0.2%</b>
<b>Total Private</b>	<b>124,200</b>	<b>124,000</b>	<b>123,600</b>	<b>200</b>	<b>0.2%</b>	<b>600</b>	<b>0.5%</b>
Goods Producing	65,500	65,600	66,000	-100	-0.2%	-500	-0.8%
Service-Providing	66,900	67,500	66,200	-600	-0.9%	700	1.1%
Private Service Providing	58,700	58,400	57,600	300	0.5%	1,100	1.9%
Mining, Logging and Construction	4,700	4,600	4,500	100	2.2%	200	4.4%
Manufacturing	60,800	61,000	61,500	-200	-0.3%	-700	-1.1%
Durable Goods	51,200	51,700	52,500	-500	-1.0%	-1,300	-2.5%
Transportation Equipment Manufacturing	32,100	32,400	33,300	-300	-0.9%	-1,200	-3.6%
Motor Vehicle Body and Trailer Manufacturing	27,600	27,900	28,600	-300	-1.1%	-1,000	-3.5%
Trade, Transportation, and Utilities	20,300	20,200	20,500	100	0.5%	-200	-1.0%
Wholesale Trade	8,000	7,900	7,900	100	1.3%	100	1.3%
Retail Trade	9,700	9,700	9,800	0	0.0%	-100	-1.0%
Transportation, Warehousing, and Utilities	2,600	2,600	2,800	0	0.0%	-200	-7.1%
Information	600	600	500	0	0.0%	100	20.0%
Financial Activities	3,200	3,200	3,200	0	0.0%	0	0.0%
Professional and Business Services	10,200	10,100	9,400	100	1.0%	800	8.5%
Education and Health Services	12,500	12,400	12,000	100	0.8%	500	4.2%
Leisure and Hospitality	7,500	7,500	7,600	0	0.0%	-100	-1.3%
Other Services	4,400	4,400	4,400	0	0.0%	0	0.0%
<b>Government</b>	<b>8,200</b>	<b>9,100</b>	<b>8,600</b>	<b>-900</b>	<b>-9.9%</b>	<b>-400</b>	<b>-4.7%</b>
Federal Government	200	200	300	0	0.0%	-100	-33.3%
State Government	300	300	300	0	0.0%	0	0.0%
Local Government	7,700	8,600	8,000	-900	-10.5%	-300	-3.8%
Local Government Educational Services	4,800	5,800	5,200	-1,000	-17.2%	-400	-7.7%

Source: Indiana Dept of Workforce Development, Research and Analysis, Current Employment Statistics

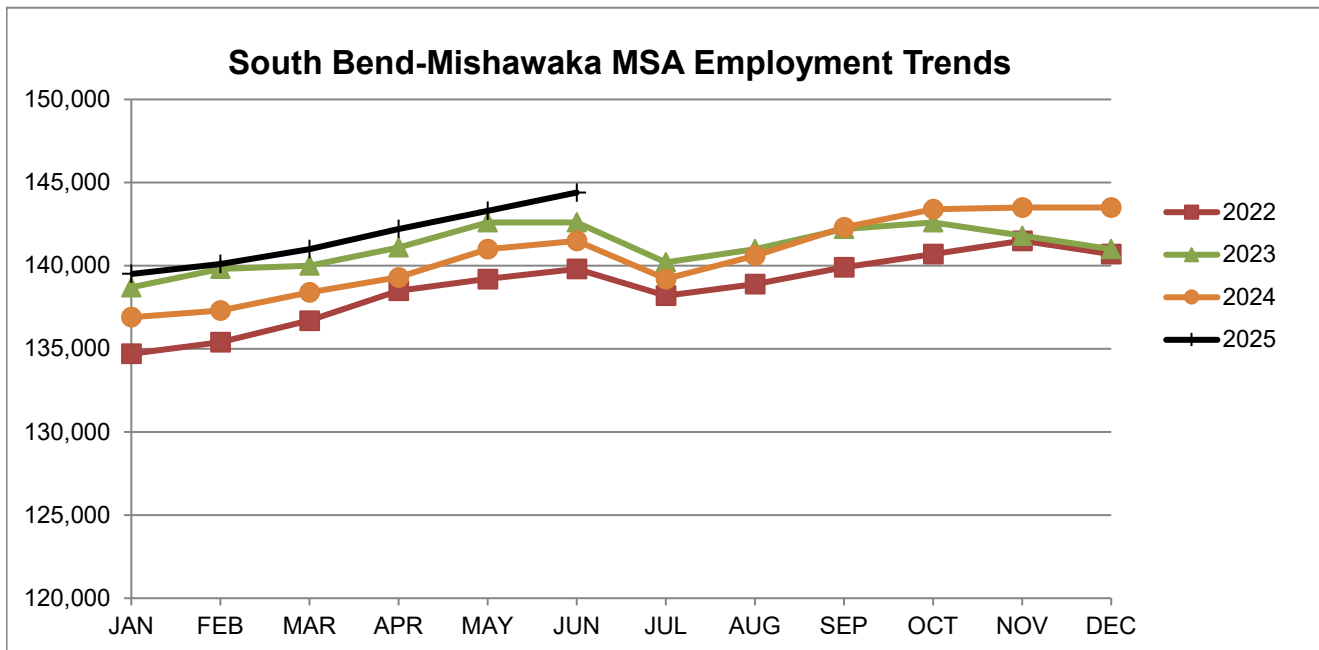


Source: Indiana Department of Workforce Development, Research & Analysis, Current Employment Statistics | Note: Historical data for the most recent 4 years (both seasonally adjusted and not seasonally adjusted) are revised near the beginning of each calendar year, prior to the release of January estimates for statewide data.



South Bend-Mishawaka MSA							
Wage and Salaried Employment	June 2025			# Change	% Change	# Change	% Change
Industry	Jun-25	May-25	Jun-24	May-25 to Jun-25		Jun-24 to Jun-25	
<b>Total Nonfarm</b>	<b>144,400</b>	<b>143,300</b>	<b>141,500</b>	<b>1,100</b>	<b>0.8%</b>	<b>2,900</b>	<b>2.1%</b>
<b>Total Private</b>	<b>129,100</b>	<b>128,300</b>	<b>126,500</b>	<b>800</b>	<b>0.6%</b>	<b>2,600</b>	<b>2.1%</b>
Goods Producing	22,100	21,900	21,700	200	0.9%	400	1.8%
Service Providing	122,300	121,400	119,800	900	0.7%	2,500	2.1%
Private Service Providing	107,000	106,400	104,800	600	0.6%	2,200	2.1%
Mining, Logging and Construction	6,800	6,600	6,500	200	3.0%	300	4.6%
Manufacturing	15,300	15,300	15,200	0	0.0%	100	0.7%
Trade, Transportation and Utilities	25,800	25,800	25,800	0	0.0%	0	0.0%
Wholesale Trade	7,100	7,100	6,800	0	0.0%	300	4.4%
Retail Trade	14,100	14,100	14,300	0	0.0%	-200	-1.4%
General Merchandise Stores	3,400	3,400	3,400	0	0.0%	0	0.0%
Transportation, Warehousing and Utilities	4,600	4,600	4,700	0	0.0%	-100	-2.1%
Information	1,400	1,400	1,400	0	0.0%	0	0.0%
Financial Activities	5,900	5,900	6,000	0	0.0%	-100	-1.7%
Professional & Business Services	13,600	13,300	13,200	300	2.3%	400	3.0%
Educational & Health Services	37,200	37,000	35,200	200	0.5%	2,000	5.7%
Hospitals	7,600	7,500	7,400	100	1.3%	200	2.7%
Leisure & Hospitality	16,000	16,000	16,100	0	0.0%	-100	-0.6%
Food Services and Drinking Places	11,500	11,500	11,600	0	0.0%	-100	-0.9%
Other Services	7,100	7,000	7,100	100	1.4%	0	0.0%
<b>Total Government</b>	<b>15,300</b>	<b>15,000</b>	<b>15,000</b>	<b>300</b>	<b>2.0%</b>	<b>300</b>	<b>2.0%</b>
Federal Government	900	900	900	0	0.0%	0	0.0%
State Government	2,200	2,300	2,500	-100	-4.4%	-300	-12.0%
Local Government	12,200	11,800	11,600	400	3.4%	600	5.2%
Local Government Educational Services	6,700	6,600	6,300	100	1.5%	400	6.4%

Source: Indiana Dept of Workforce Development, Research and Analysis, Current Employment Statistics



Source: Indiana Department of Workforce Development, Research & Analysis, Current Employment Statistics | Note: Historical data for the most recent 4 years (both seasonally adjusted and not seasonally adjusted) are revised near the beginning of each calendar year, prior to the release of January estimates for statewide data.



Frequently Listed Jobs	
Top 20 job listings by number of openings in Region 2 in the past month	
Rank	Occupations
1	Customer Service Representatives
2	Production Workers, All Other
3	Landscaping and Groundskeeping Workers
4	Hospitalists
5	Office and Administrative Support Workers, All Other
6	Packers and Packagers, Hand
7	Manufacturing Engineers
8	Molding, Coremaking, and Casting Machine Setters, Operators, and Tenders, Metal and Plastic
9	New Accounts Clerks
10	Stockers and Order Fillers
11	Business Operations Specialists, All Other
12	Data Scientists
13	Home Appliance Repairers
14	Maintenance and Repair Workers, General
15	Packaging and Filling Machine Operators and Tenders
16	Quality Control Systems Managers
17	Respiratory Therapists
18	Software Developers
19	Tellers
20	Validation Engineers

Source: Indiana Workforce Development, Indiana Career Connect

\* Due to an upgrade in the reporting system, there is a notable change in Job Postings recorded. The tool used to measure Job Postings was upgraded to prevent malicious or false postings. While customers adjust to the enhancements a drop in the record is to be expected.

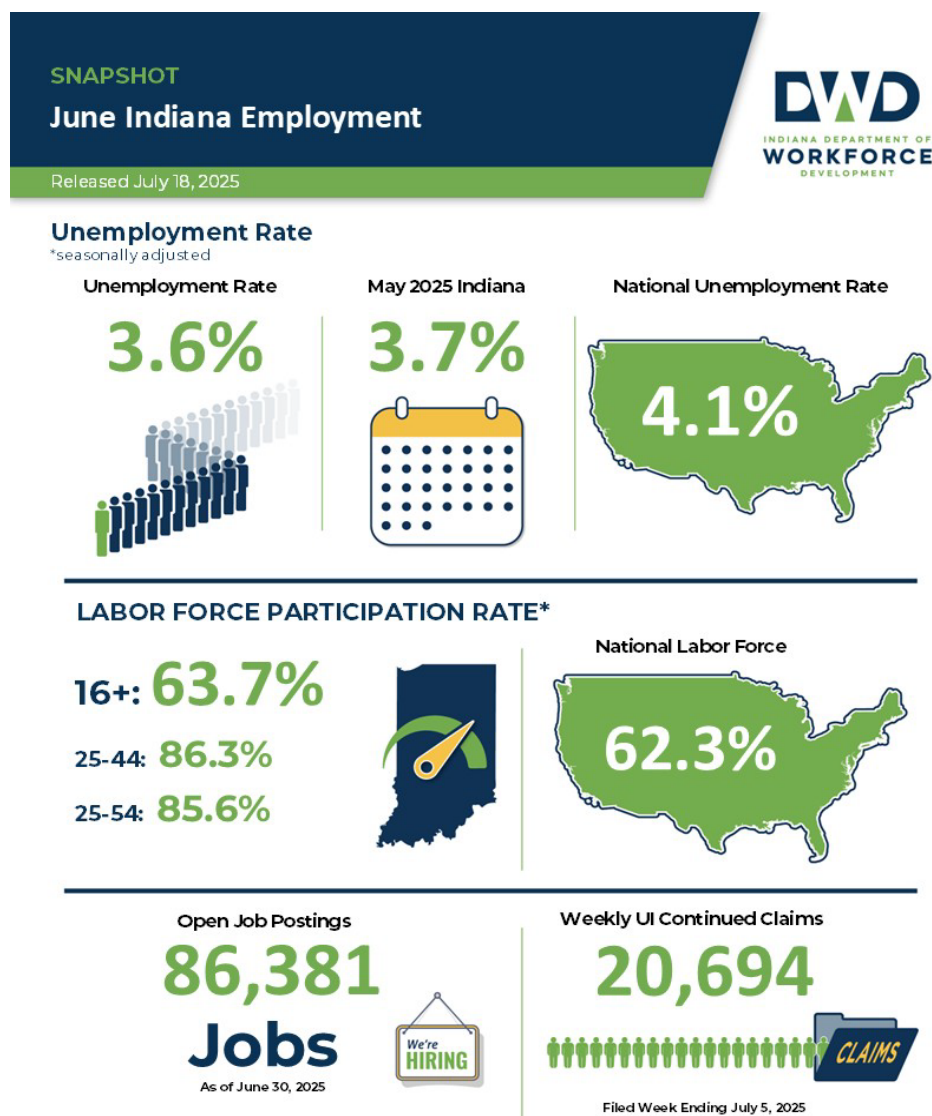
Applicant Pool	
Top 20 occupations desired by applicants on their resumes in the past 12 months	
Occupations	# of applicants
Production Workers, All Other	1,673
Assemblers and Fabricators, All Other	1,027
Helpers--Production Workers	730
Laborers and Freight, Stock, and Material Movers, Hand	417
Customer Service Representatives	416
Cashiers	366
Office Clerks, General	299
First-Line Supervisors of Production and Operating Workers	262
Team Assemblers	239
Heavy and Tractor-Trailer Truck Drivers	236
Shipping, Receiving, and Traffic Clerks	231
Office and Administrative Support Workers, All Other	220
Industrial Truck and Tractor Operators	210
Welders, Cutters, Solderers, and Brazers	208
Inspectors, Testers, Sorters, Samplers, and Weighers	203
Packers and Packagers, Hand	195
Retail Salespersons	187
Managers, All Other	165
Receptionists and Information Clerks	156
Machinists	144

Source: Indiana Workforce Development, Indiana Career Connect



Statewide Average Weekly Hours & Earnings by Industry for June 2025			
Industry	Average Earnings (per hour)	Average # of hours worked (weekly)	Average Earnings (per week)
Construction	\$36.53	39.9	\$1,457.55
Manufacturing	\$25.72	42.5	\$1,093.10
Durable Goods	\$26.65	44.1	\$1,175.27
Fabricated Metal Product Manufacturing	\$26.27	42.9	\$1,126.98
Transportation Equipment Manufacturing	\$28.52	43.9	\$1,252.03
Non-Durable Goods	\$23.15	38.6	\$893.59
Retail Trade	\$19.87	28.8	\$572.26
Financial Activities	\$28.39	38.5	\$1,093.02
Health Care and Social Assistance	\$30.54	32.7	\$998.66
Accommodation and Food Services	\$16.91	24.2	\$409.22
Food Services and Drinking Places	\$16.73	23.7	\$396.50

Source: Indiana Department of Workforce Development, Current Employment Statistics



Source: Local Area Unemployment Statistics; Bureau of Labor Statistics; Indiana Career Connect

\* The percentage of Hoosiers 16 and older who are either working or actively looking for work. Those not in the labor force include primarily, students, retirees and other non-working populations, such as individuals unable to work due to a disability or illness, or adults responsible for their family's child care needs.



## County Unemployment Rates June 2025



INDIANA DEPARTMENT OF  
**WORKFORCE**  
DEVELOPMENT

### Questions?

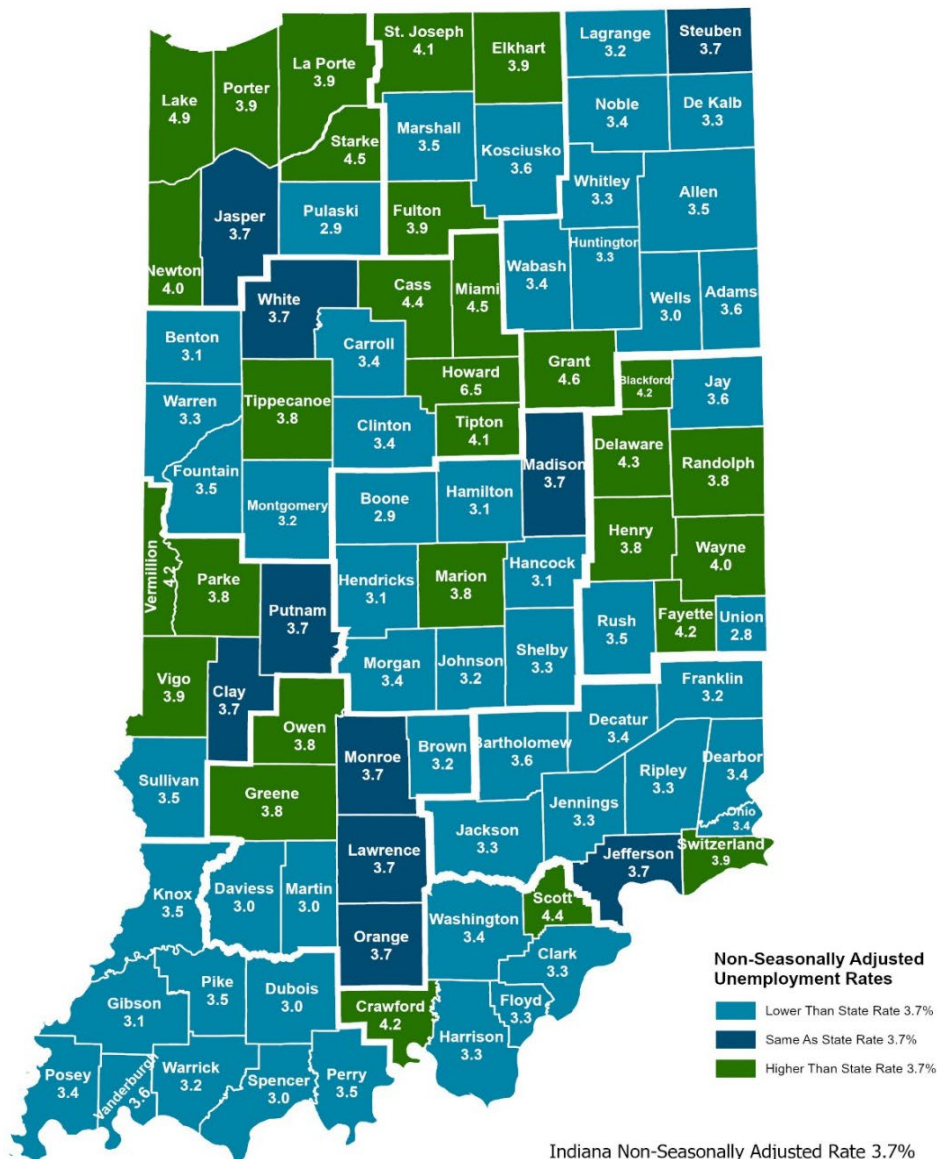
Please contact the DWD  
Research and Analysis  
Regional Labor Analyst  
listed below:

Kathy Jaworski  
Regional Labor Analyst  
Research and Analysis

[Indiana Department of  
Workforce Development](https://www.in.gov/dwd/)

219-841-6347

[kjaworski@dwd.in.gov](mailto:kjaworski@dwd.in.gov)



Indiana Non-Seasonally Adjusted Rate 3.7%  
Indiana Seasonally Adjusted Rate 3.6%  
Source: DWD, Local Area Unemployment Statistics