



September 2023
Labor Market Review

Reported by: Mike Petro

Regional Workforce Analyst

[Email Mike](#)

gpetro@dwd.in.gov

LABOR MARKET REVIEW

Economic Growth Region 12

Statistical Data Report for September 2023, Released November 2023

State Employment and Unemployment

STATE EMPLOYMENT AND UNEMPLOYMENT -- SEPTEMBER 2023
Unemployment rates were higher in September in 16 states and stable in 34 states and the District of Columbia, the U.S. Bureau of Labor Statistics reported. Twenty-four states had jobless rate decreases from a year earlier, 10 states and the District had increases, and 16 states had little change. The national unemployment rate, 3.8 percent, was unchanged over the month but was 0.3 percentage point higher than in September 2022. Nonfarm payroll employment increased in 6 states and was essentially unchanged in 44 states and the District of Columbia in September 2023. Over the year, nonfarm payroll employment increased in 36 states and was essentially unchanged in 14 states

Source: Bureau of Labor Statistics

September 2023 Labor Force Estimates (not seasonally adjusted)

Area	Labor Force	Employed	Unemployed	Sep-23	Aug-23	Sep-22
U.S.	167,718,000	161,669,000	6,049,000	3.6%	3.9%	3.3%
IN	3,397,364	3,284,422	112,942	3.3%	3.7%	2.5%
EGR 12	510,844	493,273	17,571	3.4%	3.8%	2.6%
Indy-Carmel MSA	1,122,228	1,087,327	34,901	3.1%	3.4%	2.3%
Marion Co.	510,844	493,273	17,571	3.4%	3.8%	2.6%
Indianapolis (cons.)	468,053	451,849	16,204	3.5%	3.8%	2.6%

Source: Indiana Department of Workforce Development, Research & Analysis, Local Area Unemployment Statistics | Unemployment Statistics Released:10/23

Notes: The data displayed are presented as estimates only. The most recent month's data are always preliminary and are revised when the next month's data are released.

Snapshot September Indiana Employment



Released Oct. 20, 2023

UNEMPLOYMENT RATE *seasonally adjusted

3.6%
Unemployment Rate

August 2023
Indiana was
3.4%

National
Unemployment
Rate is

3.8%

LABOR FORCE PARTICIPATION RATE

Labor Force
Participation Rate
63.4%

National Labor Force Rate

62.8%



Economic Growth Region (EGR) 12

Marion County

Unemployment Rates by State (seasonally adjusted): September 2023

U.S. - 3.8%

Illinois - 4.4%

Indiana - 3.6%

Kentucky - 4.1%

Michigan - 3.9%

Ohio - 3.4%

Source: U.S. Department of Labor, Bureau of Labor Statistics

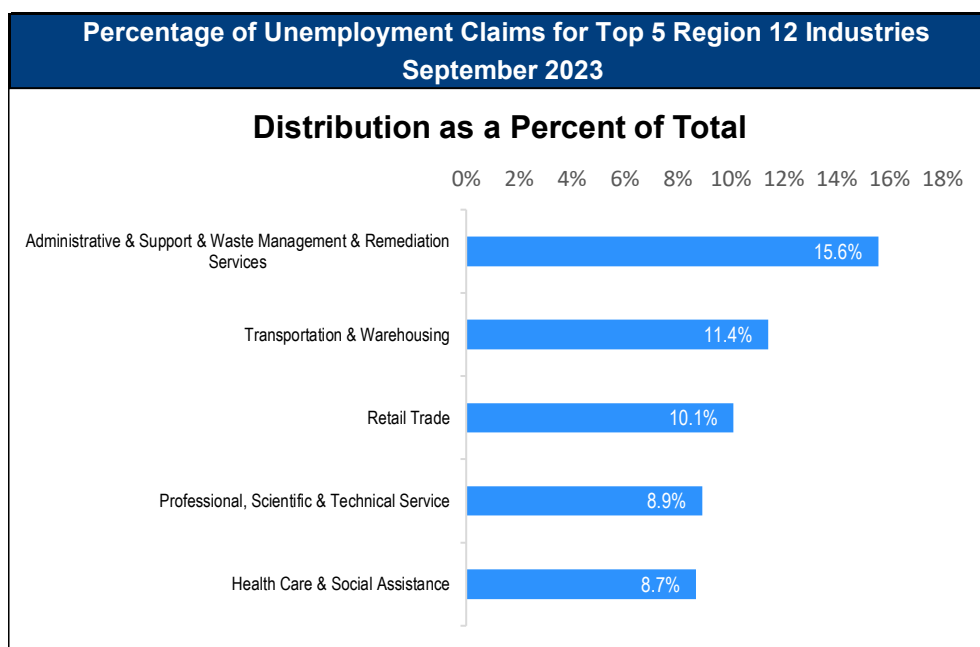
Unemployment Rank by County (of 92 counties): September 2023

#26 - Marion (3.4%)

Source: Indiana Department of Workforce Development, Research and Development, Local Area Unemployment Statistics

Consumer Price Index (CPI-U Change), Unadjusted Percent Change to September 2023 from				
CPI Item	Sep-22	Aug-23	Sep-22	Aug-23
	U.S. City		Midwest Region*	
All Items	3.7%	0.2%	3.2%	0.1%
Food & Beverages	3.7%	0.2%	3.6%	0.3%
Housing	5.6%	0.5%	4.5%	0.2%
Apparel	2.3%	1.4%	3.2%	1.6%
Transportation	2.4%	-0.6%	2.5%	-0.9%
Medical Care	-1.4%	0.1%	-0.8%	-0.3%
Recreation	3.9%	0.4%	4.2%	0.3%
Education & Communication	1.0%	0.3%	0.8%	-0.1%
Other Goods & Services	6.0%	0.6%	5.9%	0.4%

*Midwest region = Midwest Urban Average. Midwest Region includes Illinois, Indiana, Iowa, Kansas, Michigan, Minnesota, Missouri, Nebraska, North Dakota, Ohio, South Dakota and Wisconsin | Source: U.S. Bureau of Labor Statistics



Source: Indiana Department of Workforce Development, Research and Analysis

WARN Notices

WARN Notices for Region 12 for September 2023				
Company	City	County	# of workers affected	Notice Date

There are no WARN Notices for September 2023 for Region 12

Source: Indiana Department of Workforce Development, WARN Notices | For information on WARN Act requirements, you may go to the U.S. Department of Labor Employment Training Administration Fact Sheet:

<https://www.doleta.gov/programs/factsht/warn.htm>

Unemployment Claims: September 2023

Region 12

Initial Claims

09/02/23 - 453

09/09/23 - 409

09/16/23 - 452

09/23/23 - 367

09/30/23 - 388

Continued Claims

09/02/23 - 2,721

09/09/23 - 2,747

09/16/23 - 2,728

09/23/23 - 2,694

09/30/23 - 2,669

Total Claims

09/02/23 - 3,174

09/09/23 - 3,156

09/16/23 - 3,180

09/23/23 - 3,061

09/30/23 - 3,057

State of Indiana

Initial Claims

09/02/23 - 3,296

09/09/23 - 5,923

09/16/23 - 3,162

09/23/23 - 2,457

09/30/23 - 2,763

Continued Claims

09/02/23 - 23,196

09/09/23 - 23,558

09/16/23 - 18,914

09/23/23 - 19,101

09/30/23 - 19,531

Total Claims

09/02/23 - 26,492

09/09/23 - 29,481

09/16/23 - 22,076

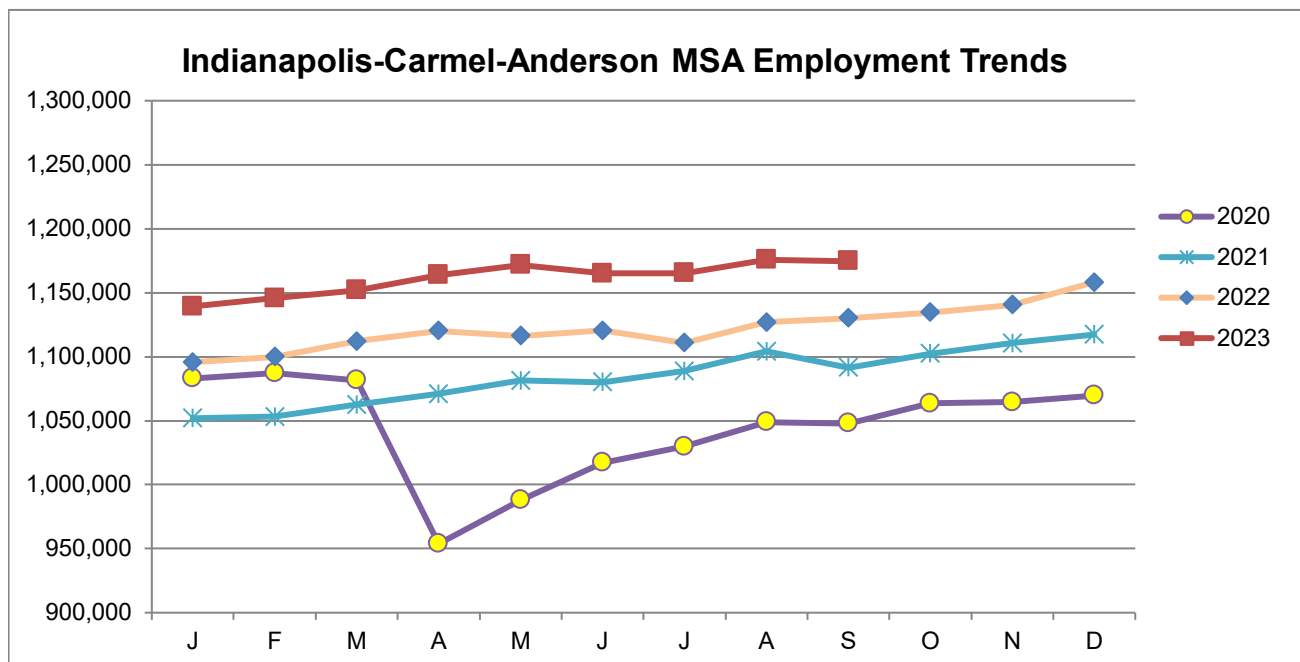
09/23/23 - 21,558

09/30/23 - 22,294

(D) indicates item is affected by non-disclosure issues relating to industry or ownership status | *Numbers subject to weekly revision | Source: Indiana Department of Workforce Development, Research and Development

Indianapolis-Carmel-Anderson MSA							
Wage and Salaried Employment	September 2023			# Change	% Change	# Change	% Change
Industry	Sep-23	Aug-23	Sep-22	Aug-23 to Sep-23		Sep-22 to Sep-23	
Total Nonfarm	1,174,800	1,175,700	1,144,800	-900	-0.1%	30,000	2.6%
Total Private	1,033,000	1,034,300	1,006,200	-1,300	-0.1%	26,800	2.7%
Goods Producing	163,600	164,600	157,400	-1,000	-0.6%	6,200	3.9%
Service-Providing	1,011,200	1,011,100	987,400	100	0.0%	23,800	2.4%
Private Service Providing	869,400	869,700	848,800	-300	0.0%	20,600	2.4%
Mining and Logging	800	800	800	0	0.0%	0	0.0%
Mining, Logging and Construction	65,000	65,600	62,000	-600	-0.9%	3,000	4.8%
Construction	64,200	64,800	61,200	-600	-0.9%	3,000	4.9%
Specialty Trade Contractors	41,200	41,900	38,700	-700	-1.7%	2,500	6.5%
Manufacturing	98,600	99,000	95,400	-400	-0.4%	3,200	3.4%
Durable Goods	52,700	52,500	51,300	200	0.4%	1,400	2.7%
Transportation Equipment Manufacturing	14,700	14,600	14,000	100	0.7%	700	5.0%
Motor Vehicle Parts Manufacturing	9,700	9,700	9,300	0	0.0%	400	4.3%
Non-Durable Goods	45,900	46,500	44,100	-600	-1.3%	1,800	4.1%
Chemical Manufacturing	19,400	19,800	18,700	-400	-2.0%	700	3.7%
Trade, Transportation, and Utilities	243,600	243,100	242,600	500	0.2%	1,000	0.4%
Wholesale Trade	55,400	55,600	53,600	-200	-0.4%	1,800	3.4%
Merchant Wholesalers, Durable Goods	35,400	35,500	34,200	-100	-0.3%	1,200	3.5%
Retail Trade	98,000	98,400	98,700	-400	-0.4%	-700	-0.7%
General Merchandise Stores	23,600	23,800	23,200	-200	-0.8%	400	1.7%
Department Stores	4,000	4,000	4,100	0	0.0%	-100	-2.4%
Other General Merchandise Stores	19,600	19,800	19,100	-200	-1.0%	500	2.6%
Transportation, Warehousing, and Utilities	90,200	89,100	90,300	1,100	1.2%	-100	-0.1%
Transportation and Warehousing	87,200	86,100	87,000	1,100	1.3%	200	0.2%
Information	12,100	12,200	12,500	-100	-0.8%	-400	-3.2%
Telecommunications	2,900	3,000	3,100	-100	-3.3%	-200	-6.5%
Financial Activities	78,500	78,700	75,400	-200	-0.3%	3,100	4.1%
Finance and Insurance	61,800	61,900	58,000	-100	-0.2%	3,800	6.6%
Insurance Carriers and Related Activities	37,900	38,000	36,000	-100	-0.3%	1,900	5.3%
Insurance Carriers	20,600	20,700	20,100	-100	-0.5%	500	2.5%
Professional and Business Services	198,300	198,500	193,600	-200	-0.1%	4,700	2.4%
Professional, Scientific, and Technical Services	84,000	84,700	81,100	-700	-0.8%	2,900	3.6%
Management of Companies and Enterprises	14,900	14,800	14,400	100	0.7%	500	3.5%
Administrative and Support and waste management and Remediation Services	99,400	99,000	98,100	400	0.4%	1,300	1.3%
Administrative and Support Services	94,700	94,300	93,200	400	0.4%	1,500	1.6%
Employment Services	51,200	51,000	52,400	200	0.4%	-1,200	-2.3%
Education and Health Services	177,500	175,800	173,300	1,700	1.0%	4,200	2.4%
Educational Services	22,400	20,500	21,500	1,900	9.3%	900	4.2%
Health Care and Social Assistance	155,100	155,300	151,800	-200	-0.1%	3,300	2.2%
Ambulatory Health Care Services	66,400	66,600	64,700	-200	-0.3%	1,700	2.6%
Hospitals	46,400	46,500	45,100	-100	-0.2%	1,300	2.9%
Leisure and Hospitality	113,800	114,900	107,300	-1,100	-1.0%	6,500	6.1%
Accommodation and Food Services	99,100	100,000	90,100	-900	-0.9%	9,000	10.0%
Food Services and Drinking Places	90,200	91,000	82,500	-800	-0.9%	7,700	9.3%
Restaurants and Other Eating Places	80,200	80,700	74,500	-500	-0.6%	5,700	7.7%
Full-service restaurants	39,500	39,900	35,900	-400	-1.0%	3,600	10.0%
Limited-Service Restaurants and Other Eating Places	40,700	40,800	38,600	-100	-0.3%	2,100	5.4%
Other Services	45,600	46,500	44,100	-900	-1.9%	1,500	3.4%
Total Government	141,800	141,400	138,600	400	0.3%	3,200	2.3%
Federal Government	18,600	18,500	17,900	100	0.5%	700	3.9%
State Government	34,900	34,300	34,000	600	1.8%	900	2.7%
Local Government	88,300	88,600	86,700	-300	-0.3%	1,600	1.9%
Local Government Educational Services	44,500	44,000	43,700	500	1.1%	800	1.8%

Source: Indiana Dept of Workforce Development, Research and Analysis, Current Employment Statistics



Source: Indiana Department of Workforce Development, Research & Analysis, Current Employment Statistics | Note: Historical data for the most recent 4 years (both seasonally adjusted and not seasonally adjusted) are revised near the beginning of each calendar year, prior to the release of January estimates for statewide data.

Frequently Listed Jobs	
Top 20 job listings by number of openings in Region 12 in the past month	
Rank	Occupations
1	Registered Nurses
2	Accountants and Auditors
3	Software Developers
4	Stockers and Order Fillers
5	Marketing Managers
6	Retail Salespersons
7	Sales Managers
8	Maintenance and Repair Workers, General
9	Management Analysts
10	Civil Engineers
11	Sales Representatives of Services, Except Advertising, Insurance, Financial Services, and Travel
12	Customer Service Representatives
13	Construction Managers
14	Acute Care Nurses
15	Licensed Practical and Licensed Vocational Nurses
16	Career/Technical Education Teachers, Postsecondary
17	Sales Representatives, Wholesale and Manufacturing, Except Technical and Scientific Products
18	Industrial Engineers
19	Travel Agents
20	Critical Care Nurses

Source: Indiana Workforce Development, Indiana Career Connect

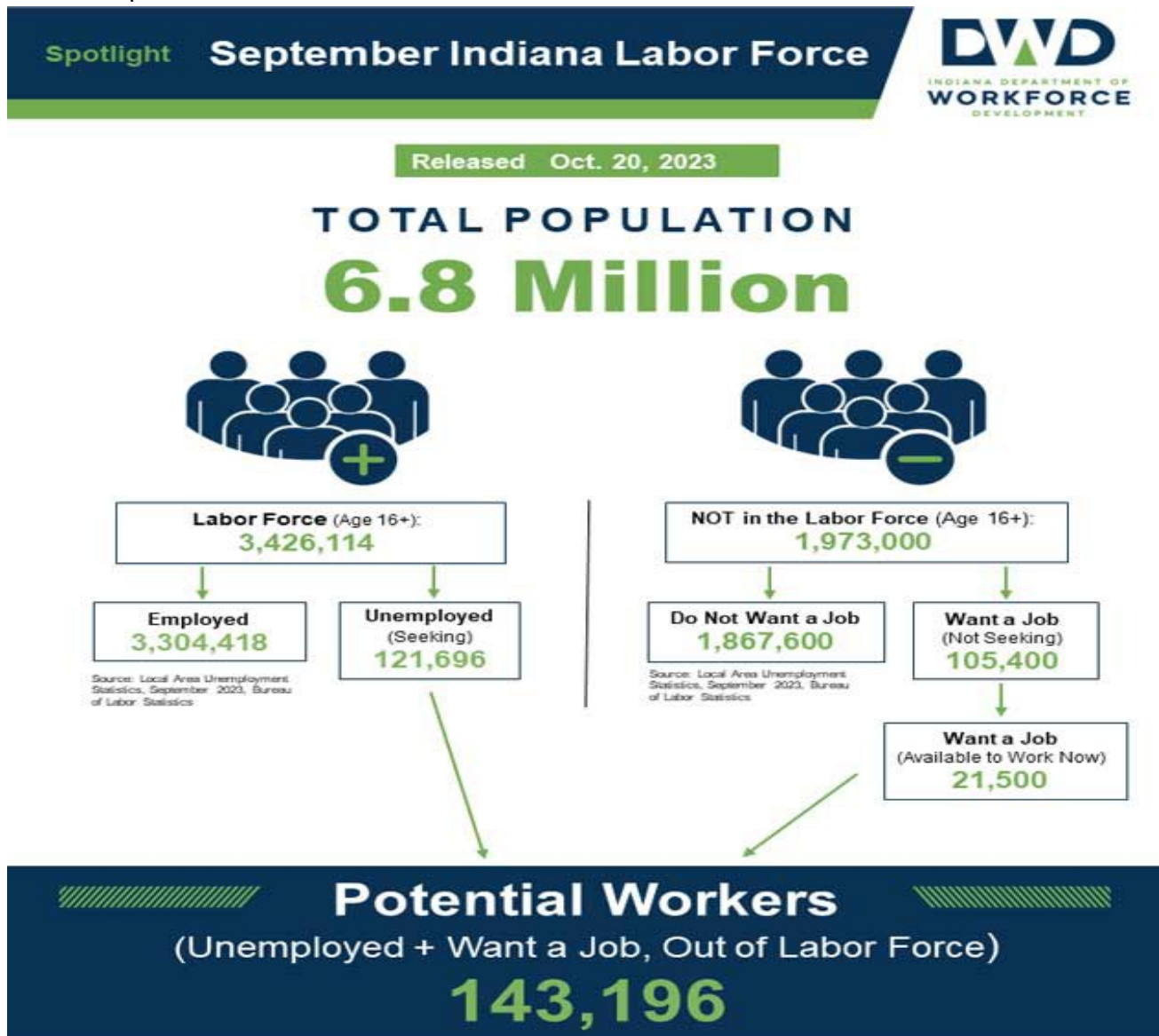
Applicant Pool	
Top 20 occupations desired by applicants on their resumes in the past 12 months	
Occupations	# of applicants
Customer Service Representatives	2,826
Cashiers	1,441
Production Workers, All Other	1,409
Laborers and Freight, Stock, and Material Movers, Hand	1,382
Assemblers and Fabricators, All Other	1,255
Helpers--Production Workers	1,040
Office Clerks, General	790
Packers and Packagers, Hand	763
Office and Administrative Support Workers, All Other	688
Retail Salespersons	590
Industrial Truck and Tractor Operators	585
Executive Secretaries and Executive Administrative Assistants	558
Managers, All Other	557
Receptionists and Information Clerks	504
Heavy and Tractor-Trailer Truck Drivers	499
Data Entry Keyers	487
Shipping, Receiving, and Traffic Clerks	437
Janitors and Cleaners, Except Maids and Housekeeping Cleaners	413
Medical Assistants	382
Food Preparation Workers	339

Source: Indiana Workforce Development, Indiana Career Connect

Real Earnings Summary

REAL EARNINGS – SEPTEMBER 2023

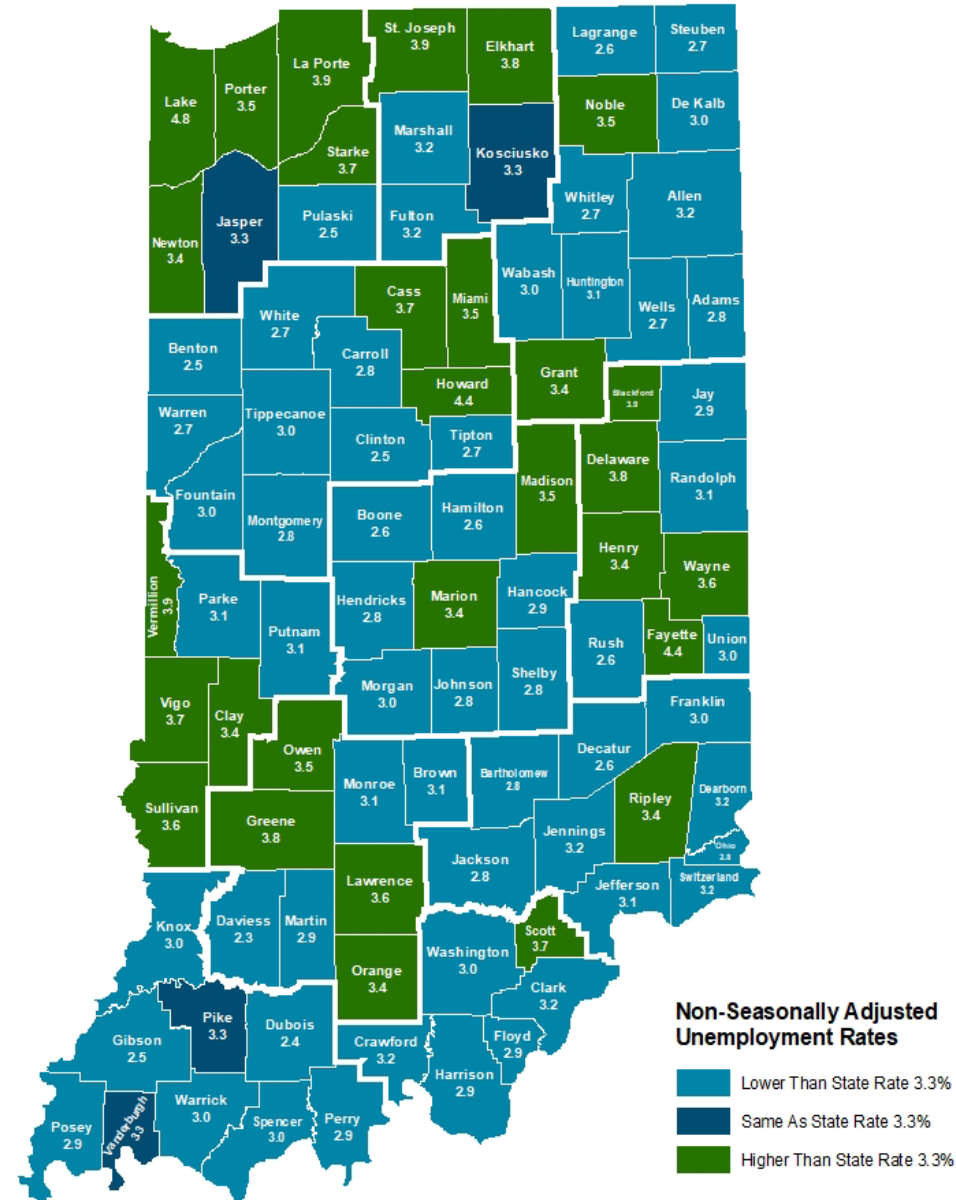
Real average hourly earnings for all employees decreased 0.2 percent from August to September, seasonally adjusted, the U.S. Bureau of Labor Statistics reported. This result stems from an increase of 0.2 percent in average hourly earnings combined with an increase of 0.4 percent in the Consumer Price Index for All Urban Consumers (CPI-U). Real average weekly earnings decreased 0.2 percent over the month due to the change in real average hourly earnings combined with no change in the average workweek. Real average hourly earnings increased 0.5 percent, seasonally adjusted, from September 2022 to September 2023. The change in real average hourly earnings combined with a decrease of 0.6 percent in the average workweek resulted in a 0.1-percent decrease in real average weekly earnings over this period. Source: U.S. Bureau of Labor Statistics



More about the U.S. Bureau of Labor Statistics data sources used within:
Local Area Unemployment Statistics (LAUS): Captures Indiana's labor force, which includes those currently employed and those who are unemployed and actively seeking work.
Current Population Survey (CPS): Captures individuals not participating in Indiana's Labor Force. This set includes non-participants that do not want a job (i.e., retirees and students) and those that want a job, but are not actively seeking work.
U.S. Census Bureau, Indiana Population 2023.

Resource: Notes on Using Current Population Survey (CPS) Subnational Data and Differences Between CPS and LAUS Estimates

County Unemployment Rates September 2023



Indiana Non-Seasonally Adjusted Rate 3.3%
 Indiana Seasonally Adjusted Rate 3.6%
 Source: DWD, Local Area Unemployment Statistics



Questions?

Please contact the DWD
 Research and Analysis
 Regional Labor Analyst
 listed below:

Mike Petro
 Regional Labor Analyst
 Research and Analysis

[Indiana Department of
 Workforce Development](https://www.in.gov/dwd/)
gpetro@dwd.in.gov