



December 2022 Labor Market Review

Reported by: Mike Petro

Regional Workforce Analyst

[Email Mike](#)

GPetro@dwd.in.gov

Tel: 317-537-1316

LABOR MARKET REVIEW

Economic Growth Region 12

Statistical Data Report for December 2022, Released February 2023

State Employment and Unemployment

STATE EMPLOYMENT AND UNEMPLOYMENT -- DECEMBER 2022

Unemployment rates were higher in December in 7 states, lower in 5 states, and stable in 38 states and the District of Columbia, the U.S. Bureau of Labor Statistics reported. Thirty-five states and the District had jobless rate decreases from a year earlier, 4 states had increases, and 11 states had little change. The national unemployment rate edged down to 3.5 percent over the month and was 0.4 percentage point lower than in December 2021.

Nonfarm payroll employment decreased in 1 state and was essentially unchanged in 49 states and the District of Columbia in December 2022. Over the year, nonfarm payroll employment increased in 42 states and was essentially unchanged in 8 states and the District.

Source: Bureau of Labor Statistics

December 2022 Labor Force Estimates (not seasonally adjusted)

Area	Labor Force	Employed	Unemployed	Dec-22	Nov-22	Dec-21
U.S.	164,224,000	158,872,000	5,352,000	3.3%	3.4%	3.7%
IN	3,398,327	3,315,220	83,107	2.4%	2.9%	1.5%
EGR 12	506,570	493,997	12,573	2.5%	3.0%	1.9%
Indy MSA	1,110,642	1,086,712	23,930	2.2%	2.6%	1.4%
Marion Co.	506,570	493,997	12,573	2.5%	3.0%	1.9%
Indianapolis (cons.)	464,032	452,513	11,519	2.5%	3.0%	1.9%

Source: Indiana Department of Workforce Development, Research & Analysis, Local Area Unemployment Statistics | Unemployment Statistics Released:01/23

Notes: The data displayed are presented as estimates only. The most recent month's data are always preliminary and are revised when the next month's data are released.

LABOR FORCE PARTICIPATION RATE

Labor Force
Participation Rate

63.2%



National Labor Force Rate



128,198

Open Job Postings
*As of Jan. 17, 2023



21,773

People Receiving
Unemployment Benefits

unique unemployment claims paid



Source: Local Area Unemployment Statistics, Bureau of Labor Statistics | Indiana Career Council



Economic Growth Region (EGR) 12

Marion County

Unemployment Rates by State (seasonally adjusted): December 2022

U.S. - 3.5%

Illinois - 4.7%

Indiana - 3.1%

Kentucky - 4%

Michigan - 4.3%

Ohio - 4.2%

Source: U.S. Department of Labor, Bureau of Labor Statistics

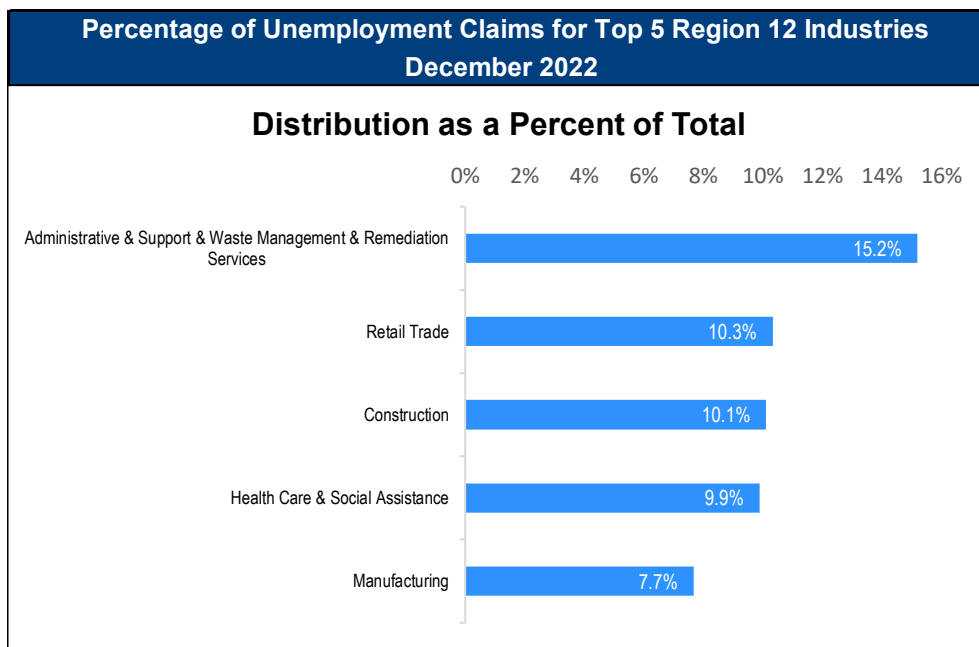
Unemployment Rank by County (of 92 counties): December 2022

#29 - Marion (2.5%)

Source: Indiana Department of Workforce Development, Research and Development, Local Area Unemployment Statistics

Consumer Price Index (CPI-U Change), Unadjusted Percent Change to December 2022 from				
CPI Item	Dec-21	Nov-22	Dec-21	Nov-22
	U.S. City		Midwest Region*	
All Items	6.5%	-0.3%	6.0%	-0.5%
Food & Beverages	10.1%	0.3%	11.0%	0.3%
Housing	8.1%	0.6%	6.6%	0.7%
Apparel	2.9%	-1.7%	2.1%	-1.8%
Transportation	3.9%	-3.3%	3.9%	-3.9%
Medical Care	4.0%	0.0%	3.6%	-0.3%
Recreation	5.1%	0.2%	6.8%	0.3%
Education & Communication	0.7%	0.0%	0.5%	0.2%
Other Goods & Services	6.4%	-0.1%	7.8%	0.2%

*Midwest region = Midwest Urban Average. Midwest Region includes Illinois, Indiana, Iowa, Kansas, Michigan, Minnesota, Missouri, Nebraska, North Dakota, Ohio, South Dakota and Wisconsin | Source: U.S. Bureau of Labor Statistics



Source: Indiana Department of Workforce Development, Research and Analysis

WARN Notices

WARN Notices for Region 12 for December 2022				
Company	City	County	# of workers affected	Notice Date
FedEx Supply Chain, Inc.	Indianapolis	Marion	179	12/2/2022

For the month of December, Region 12 had 1 WARN notices, affecting up to 179 people. Please visit <https://www.in.gov/dwd/2567.htm> for details.

Source: Indiana Department of Workforce Development, WARN Notices | For information on WARN Act requirements, you may go to the U.S. Department of Labor Employment Training Administration Fact Sheet:
<https://www.doleta.gov/programs/factsht/warn.htm>

Unemployment Claims: December 2022

Region 12

Initial Claims

12/03/22 - 602
12/10/22 - 576
12/17/22 - 514
12/24/22 - 538
12/31/22 - 497

Continued Claims

12/03/22 - 1,845
12/10/22 - 1,836
12/17/22 - 1,909
12/24/22 - 2,002
12/31/22 - 2,070

Total Claims

12/03/22 - 2,447
12/10/22 - 2,412
12/17/22 - 2,423
12/24/22 - 2,540
12/31/22 - 2,567

State of Indiana

Initial Claims

12/03/22 - 6,168
12/10/22 - 6,168
12/17/22 - 4,545
12/24/22 - 5,591
12/31/22 - 6,682

Continued Claims

12/03/22 - 26,097
12/10/22 - 21,595
12/17/22 - 23,043
12/24/22 - 29,901
12/31/22 - 30,735

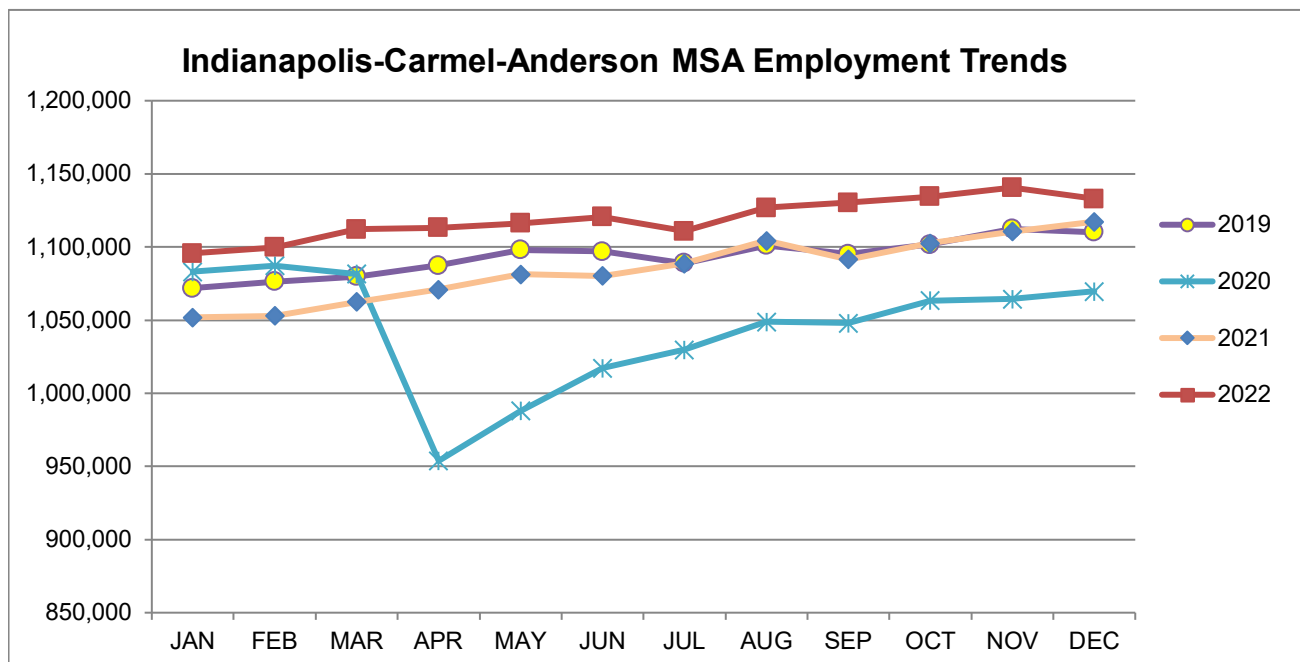
Total Claims

12/03/22 - 32,265
12/10/22 - 27,763
12/17/22 - 27,588
12/24/22 - 35,492
12/31/22 - 37,417

(D) indicates item is affected by non-disclosure issues relating to industry or ownership status |
Source: Indiana Department of Workforce Development, Research and Development

Indianapolis-Carmel-Anderson MSA							
Wage and Salaried Employment	December 2022			# Change	% Change	# Change	% Change
Industry	Dec-22	Nov-22	Dec-21	Nov-22 to Dec-22		Dec-21 to Dec-22	
Total Nonfarm	1,133,000	1,140,600	1,117,300	-7,600	-0.7%	15,700	1.4%
Total Private	994,400	1,001,700	979,900	-7,300	-0.7%	14,500	1.5%
Goods Producing	158,800	160,200	151,700	-1,400	-0.9%	7,100	4.7%
Service-Providing	974,200	980,400	965,600	-6,200	-0.6%	8,600	0.9%
Private Service Providing	835,600	841,500	828,200	-5,900	-0.7%	7,400	0.9%
Mining and Logging	800	800	800	0	0.0%	0	0.0%
Mining, Logging and Construction	63,200	64,400	59,000	-1,200	-1.9%	4,200	7.1%
Construction	62,400	63,600	58,200	-1,200	-1.9%	4,200	7.2%
Specialty Trade Contractors	41,000	41,300	36,900	-300	-0.7%	4,100	11.1%
Manufacturing	95,600	95,800	92,700	-200	-0.2%	2,900	3.1%
Durable Goods	50,900	50,800	49,700	100	0.2%	1,200	2.4%
Transportation Equipment Manufacturing	14,300	14,300	14,300	0	0.0%	0	0.0%
Motor Vehicle Parts Manufacturing	9,600	9,600	9,500	0	0.0%	100	1.1%
Non-Durable Goods	44,700	45,000	43,000	-300	-0.7%	1,700	4.0%
Chemical Manufacturing	18,900	18,800	18,100	100	0.5%	800	4.4%
Trade, Transportation, and Utilities	253,400	252,700	245,000	700	0.3%	8,400	3.4%
Wholesale Trade	52,200	51,800	50,500	400	0.8%	1,700	3.4%
Merchant Wholesalers, Durable Goods	33,400	33,100	32,400	300	0.9%	1,000	3.1%
Retail Trade	107,000	106,000	105,700	1,000	0.9%	1,300	1.2%
General Merchandise Stores	24,800	24,400	25,600	400	1.6%	-800	-3.1%
Department Stores	4,600	4,400	4,800	200	4.6%	-200	-4.2%
Other General Merchandise Stores	20,200	20,000	20,800	200	1.0%	-600	-2.9%
Transportation, Warehousing, and Utilities	94,200	94,900	88,800	-700	-0.7%	5,400	6.1%
Transportation and Warehousing	90,900	91,600	85,400	-700	-0.8%	5,500	6.4%
Information	12,400	12,500	12,400	-100	-0.8%	0	0.0%
Telecommunications	3,200	3,200	3,300	0	0.0%	-100	-3.0%
Financial Activities	78,400	78,300	74,400	100	0.1%	4,000	5.4%
Finance and Insurance	62,500	61,900	58,100	600	1.0%	4,400	7.6%
Insurance Carriers and Related Activities	36,200	36,000	35,100	200	0.6%	1,100	3.1%
Insurance Carriers	20,300	20,300	19,900	0	0.0%	400	2.0%
Professional and Business Services	183,600	186,100	186,000	-2,500	-1.3%	-2,400	-1.3%
Professional, Scientific, and Technical Services	71,700	71,600	72,500	100	0.1%	-800	-1.1%
Management of Companies and Enterprises	13,400	13,400	13,400	0	0.0%	0	0.0%
Administrative and Support and waste management and Remediation Services	98,500	101,100	100,100	-2,600	-2.6%	-1,600	-1.6%
Administrative and Support Services	91,900	94,300	95,600	-2,400	-2.6%	-3,700	-3.9%
Employment Services	51,400	52,700	55,400	-1,300	-2.5%	-4,000	-7.2%
Education and Health Services	164,500	166,600	165,100	-2,100	-1.3%	-600	-0.4%
Educational Services	20,700	21,800	19,800	-1,100	-5.1%	900	4.6%
Health Care and Social Assistance	143,800	144,800	145,300	-1,000	-0.7%	-1,500	-1.0%
Ambulatory Health Care Services	60,500	60,000	61,200	500	0.8%	-700	-1.1%
Hospitals	45,100	45,300	44,300	-200	-0.4%	800	1.8%
Leisure and Hospitality	101,200	103,200	102,200	-2,000	-1.9%	-1,000	-1.0%
Accommodation and Food Services	85,200	85,900	86,600	-700	-0.8%	-1,400	-1.6%
Food Services and Drinking Places	76,600	76,900	79,600	-300	-0.4%	-3,000	-3.8%
Restaurants and Other Eating Places	69,300	69,900	71,800	-600	-0.9%	-2,500	-3.5%
Full-service restaurants	34,900	35,000	34,100	-100	-0.3%	800	2.4%
Limited-Service Restaurants and Other Eating Places	34,400	34,900	37,700	-500	-1.4%	-3,300	-8.8%
Other Services	42,100	42,100	43,100	0	0.0%	-1,000	-2.3%
Total Government	138,600	138,900	137,400	-300	-0.2%	1,200	0.9%
Federal Government	17,700	17,600	17,900	100	0.6%	-200	-1.1%
State Government	34,900	35,200	34,500	-300	-0.9%	400	1.2%
Local Government	86,000	86,100	85,000	-100	-0.1%	1,000	1.2%
Local Government Educational Services	43,900	43,900	42,800	0	0.0%	1,100	2.6%

Source: Indiana Dept of Workforce Development, Research and Analysis, Current Employment Statistics



Source: Indiana Department of Workforce Development, Research & Analysis, Current Employment Statistics | Note: Historical data for the most recent 4 years (both seasonally adjusted and not seasonally adjusted) are revised near the beginning of each calendar year, prior to the release of January estimates for statewide data.

Frequently Listed Jobs	
Top 20 job listings by number of openings in Region 12 in the past month	
Rank	Occupations
1	Career/Technical Education Teachers, Postsecondary
2	Stockers and Order Fillers
3	Registered Nurses
4	Accountants and Auditors
5	Software Developers
6	Maintenance and Repair Workers, General
7	Computer User Support Specialists
8	Sales Representatives of Services, Except Advertising, Insurance, Financial Services, and Travel
9	Civil Engineers
10	Sales Managers
11	Retail Salespersons
12	Nursing Assistants
13	First-Line Supervisors of Production and Operating Workers
14	Licensed Practical and Licensed Vocational Nurses
15	Management Analysts
16	Mechanical Engineers
17	Customer Service Representatives
18	Information Technology Project Managers
19	Heavy and Tractor-Trailer Truck Drivers
20	Laborers and Freight, Stock, and Material Movers, Hand

Source: Indiana Workforce Development, Indiana Career Connect

Applicant Pool	
Top 20 occupations desired by applicants on their resumes in the past 12 months	
Occupations	# of applicants
Customer Service Representatives	3,040
Cashiers	1,686
Production Workers, All Other	1,439
Laborers and Freight, Stock, and Material Movers, Hand	1,370
Assemblers and Fabricators, All Other	1,278
Helpers--Production Workers	1,035
Office Clerks, General	864
Packers and Packagers, Hand	785
Office and Administrative Support Workers, All Other	780
Retail Salespersons	614
Executive Secretaries and Executive Administrative Assistants	611
Managers, All Other	598
Receptionists and Information Clerks	566
Data Entry Keyers	527
Industrial Truck and Tractor Operators	519
Janitors and Cleaners, Except Maids and Housekeeping Cleaners	478
Shipping, Receiving, and Traffic Clerks	455
Medical Assistants	430
Heavy and Tractor-Trailer Truck Drivers	408
Waiters and Waitresses	390

Source: Indiana Workforce Development, Indiana Career Connect

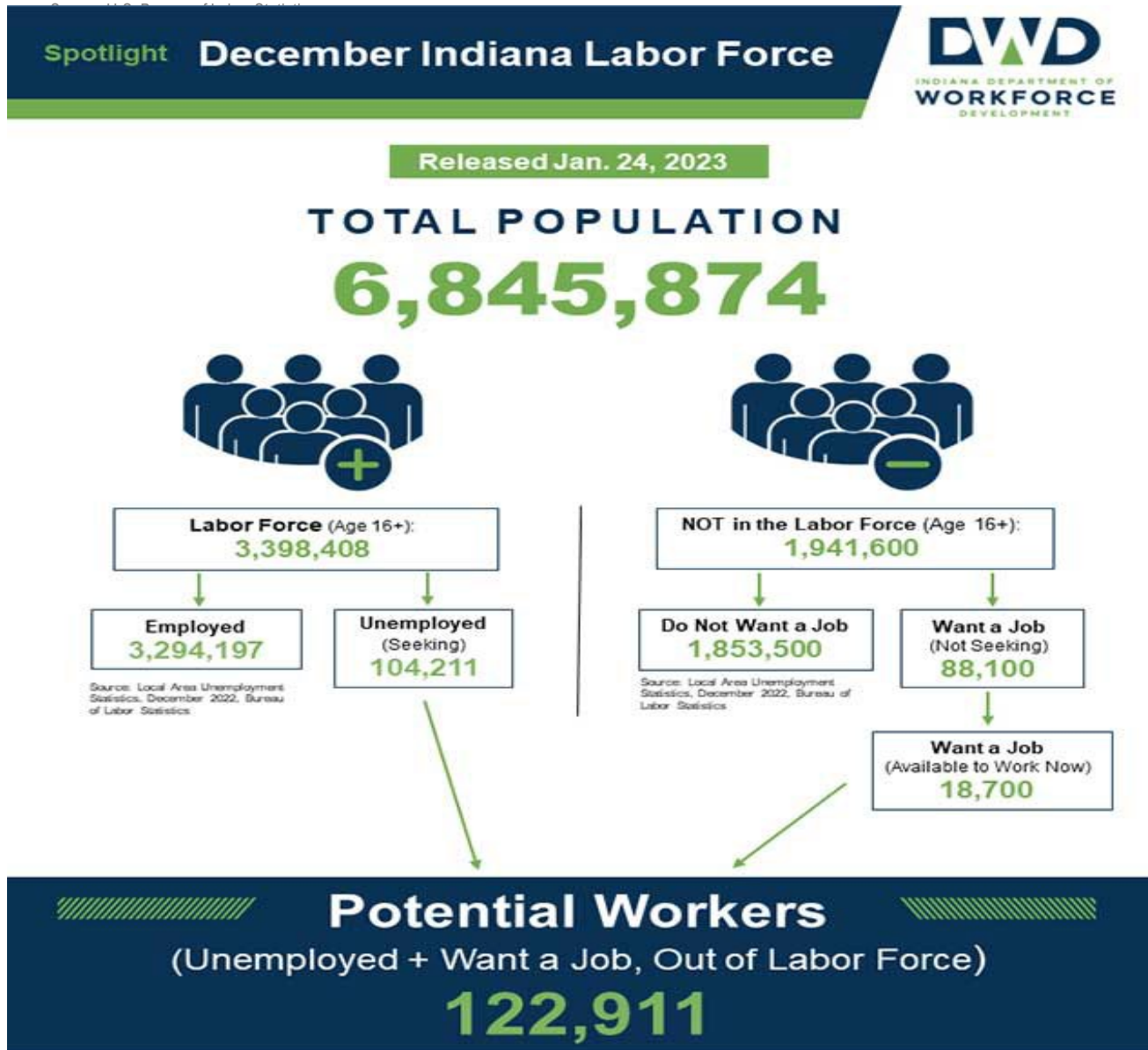
Real Earnings Summary

REAL EARNINGS – DECEMBER 2022

Real average hourly earnings increased 0.4 percent from November to December, seasonally adjusted, the U.S. Bureau of Labor Statistics reported. This result stems from an increase of 0.3 percent in average hourly earnings combined with a decrease of 0.1 percent in the Consumer Price Index for All Urban Consumers (CPI-U).

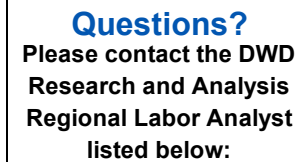
Real average weekly earnings increased 0.1 percent over the month due to the change in real average hourly earnings combined with a decrease of 0.3 percent in the average workweek.

Real average hourly earnings decreased 1.7 percent, seasonally adjusted, from December 2021 to December 2022. The change in real average hourly earnings combined with a decrease of 1.4 percent in the average workweek resulted in a 3.1-percent decrease in real average weekly earnings over this period.



More about the U.S. Bureau of Labor Statistics data sources used within:
Local Area Unemployment Statistics (LAUS): Captures Indiana's labor force, which includes those currently employed and those who are unemployed and actively seeking work.
Current Population Survey (CPS): Captures individuals not participating in Indiana's labor force. This set includes non-participants that do not want a job (i.e., retirees and students) and those that want a job, but are not actively seeking work.
U.S. Census Bureau, Indiana Population 2021.

Resource: Notes on Using Current Population Survey (CPS) Subnational Data and Differences Between CPS and LAUS Estimates



Indiana Department of
Workforce Development

GPetro@dwd.in.gov