



# HOOSIERS BY THE NUMBERS

Your premier source for labor market information for Indiana.



## INDUSTRY SECTOR SNAPSHOT

### Economic Growth Region 12

Quarter 1 2024

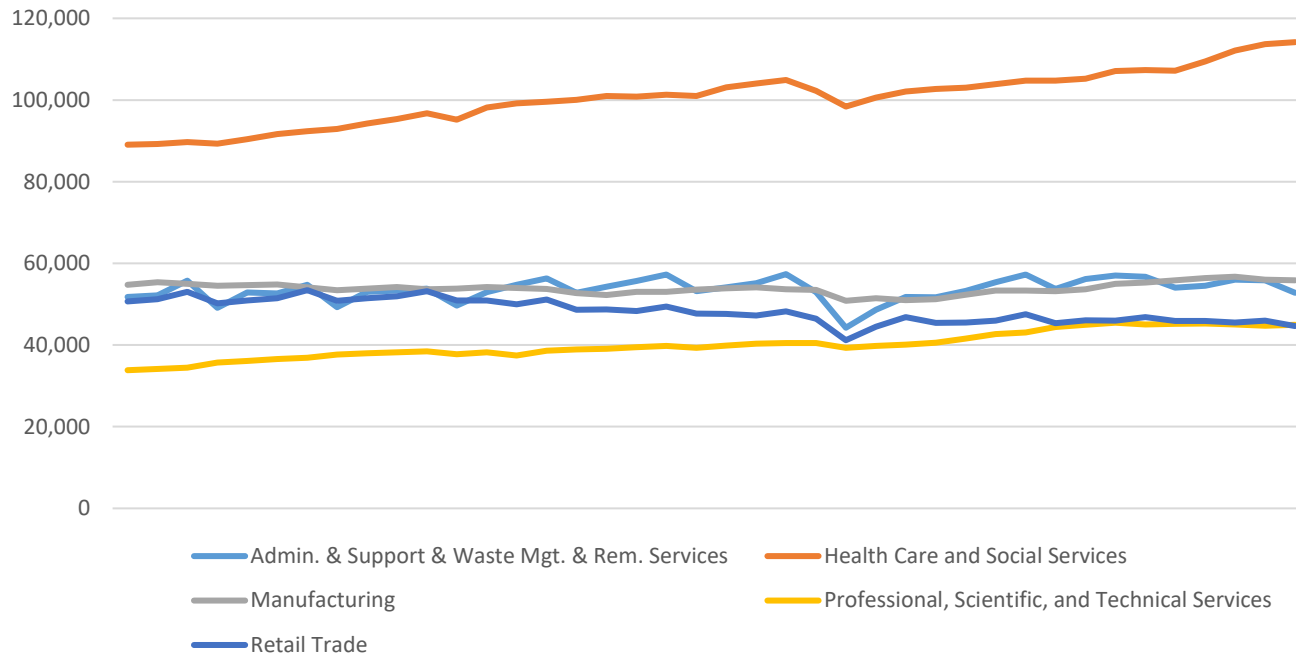
Marion County

Industry	Jobs	Previous Year	Establishments	Previous Year	Average Weekly Wage	Previous Year
<b>Total</b>	<b>617,930</b>	<b>↑ 1.06%</b>	<b>24,975</b>	<b>↑ 1.03%</b>	<b>\$1,642</b>	<b>↑ 8.24%</b>
Accommodation and Food Services	44,540	↓ -0.63%	2,145	↓ -0.74%	\$551	↑ 4.36%
Admin. & Support & Waste Mgt. & Rem. Services	52,826	↓ -2.20%	1,770	↓ -0.28%	\$938	↑ 6.35%
Agriculture, Forestry, Fishing and Hunting	480	↓ -1.03%	26	↓ -18.75%	\$1,334	↑ 26.93%
Arts, Entertainment, and Recreation	9,989	↑ 8.62%	342	↓ -1.72%	\$1,924	↑ 15.56%
Construction	34,207	↑ 7.05%	1,821	↑ 1.00%	\$1,690	↑ 8.54%
Educational Services	41,737	↑ 1.44%	523	↑ 2.55%	\$1,210	↑ 4.22%
Finance and Insurance	23,371	↓ -12.83%	1,484	↓ -0.74%	\$2,682	↑ 5.18%
Health Care and Social Services	114,166	↑ 6.55%	2,531	↑ 5.11%	\$1,488	↑ 2.69%
Information	7,772	↓ -3.60%	437	↓ -2.02%	\$1,776	↑ 2.07%
Management of Companies and Enterprises	9,516	↑ 6.38%	223	↓ -0.89%	\$2,858	↓ -6.42%
Manufacturing	55,884	↑ 0.08%	907	↓ -0.55%	\$3,894	↑ 27.92%
Mining	231	↑ 1.76%	12	○ 0.00%	\$1,316	↓ -0.53%
Other Services (Except Public Administration)	20,379	↑ 4.80%	2,052	↑ 0.93%	\$1,065	↑ 3.90%
Professional, Scientific, and Technical Services	44,931	↓ -0.53%	3,736	↑ 2.81%	\$1,998	↑ 4.17%
Public Administration	30,016	↑ 5.84%	158	↑ 0.64%	\$1,556	↑ 10.04%
Real Estate and Rental and Leasing	10,383	↑ 7.48%	1,334	↑ 2.30%	\$1,539	↑ 2.53%
Retail Trade	44,655	↓ -2.68%	2,733	↓ -0.55%	\$797	↑ 0.76%
Transportation & Warehousing	42,424	↓ -2.52%	871	↓ -2.57%	\$1,267	↑ 2.43%
Utilities	2,213	↑ 1.98%	38	↑ 8.57%	\$2,151	↑ 6.43%
Wholesale Trade	28,210	↓ -1.27%	1,832	↑ 2.40%	\$1,853	↑ 1.81%

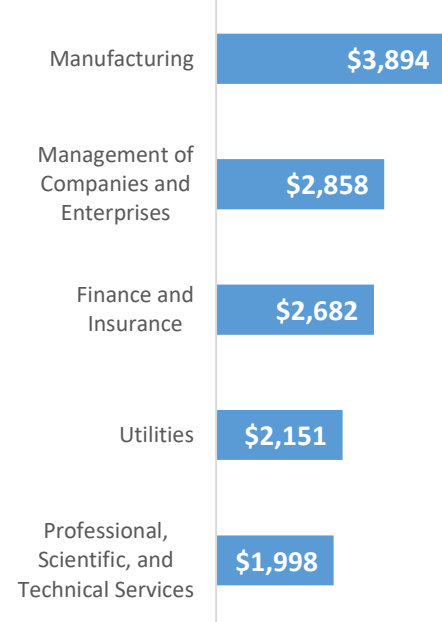
\* These industries exclude county data (jobs and wages) that are not available due to non-disclosure requirements.

D = This item is not available due to non-disclosure requirements.  
Indiana Department of Workforce Development

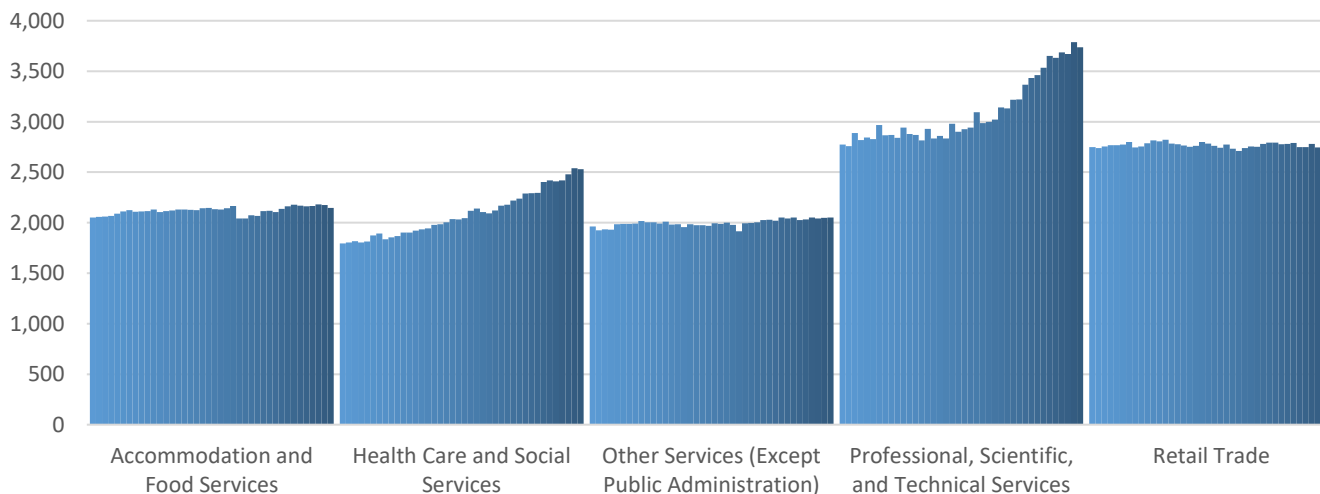
Top 5 Largest Industries by Jobs (past 10 years)



Top 5 Paying Industries by Average Weekly Wage



Top 5 Largest Industries by Establishments (past 10 years)



Source:

*Quarterly Census of Employment and Wages, Indiana Dept. of Workforce Development*

For more information, contact:

**Alex Corn, MPA**  
Senior Regional Workforce Analyst  
[dcorn@dwd.in.gov](mailto:dcorn@dwd.in.gov)

