



HOOSIERS BY THE NUMBERS

Your premier source for labor market information for Indiana.



INDUSTRY SECTOR SNAPSHOT

Economic Growth Region 12

Quarter 1 2023

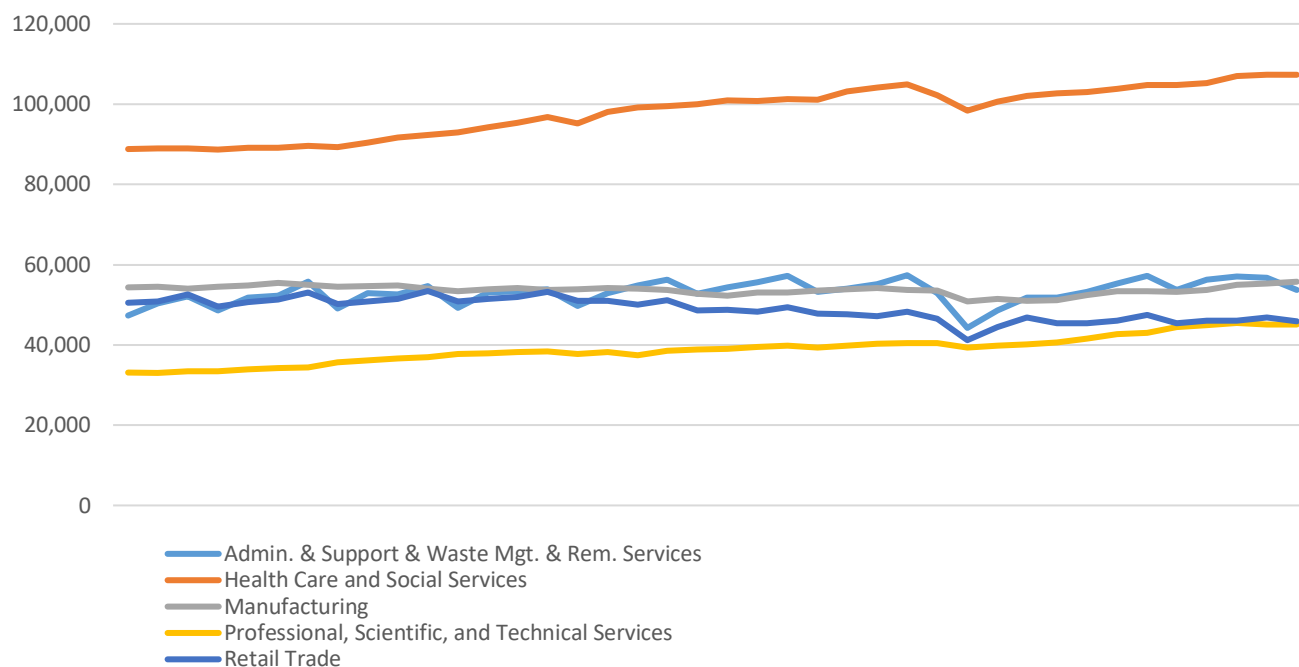
Marion County

Industry	Jobs	Previous Year	Establishments	Previous Year	Average Weekly Wage	Previous Year
Total	611,048	↑ 2.51%	24,687	↑ 2.10%	\$1,518	↑ 5.20%
Accommodation and Food Services	44,742	↑ 4.70%	2,166	↑ 1.31%	\$529	↑ 10.44%
Admin. & Support & Waste Mgt. & Rem. Services	53,756	↑ 0.12%	1,768	↑ 7.09%	\$880	↑ 11.82%
Agriculture, Forestry, Fishing and Hunting	484	↑ 2.54%	31	↓ -3.13%	\$1,053	↑ 1.45%
Arts, Entertainment, and Recreation	9,237	↑ 9.22%	346	↑ 5.17%	\$1,657	↓ -3.72%
Construction	31,939	↑ 7.21%	1,807	↑ 2.03%	\$1,558	↑ 9.03%
Educational Services	41,117	↑ 3.55%	510	↑ 5.37%	\$1,162	↑ 8.90%
Finance and Insurance	27,010	↓ -0.57%	1,499	↓ -3.60%	\$2,536	↑ 7.05%
Health Care and Social Services	107,293	↑ 2.45%	2,405	↑ 4.88%	\$1,453	↑ 1.25%
Information	8,053	↓ -1.67%	445	↑ 10.15%	\$1,738	↑ 8.02%
Management of Companies and Enterprises	8,879	↑ 1.19%	222	↑ 7.25%	\$3,064	↓ -11.50%
Manufacturing	55,747	↑ 4.83%	917	↓ -1.19%	\$3,046	↑ 3.29%
Mining	227	D	12	↑ 9.09%	\$1,323	D
Other Services (Except Public Administration)	19,419	↑ 3.86%	2,037	↓ -0.68%	\$1,026	↑ 8.11%
Professional, Scientific, and Technical Services	45,135	↑ 1.65%	3,628	↑ 5.71%	\$1,919	↑ 6.02%
Public Administration	28,360	↓ -2.18%	157	↓ -1.88%	\$1,414	↑ 4.90%
Real Estate and Rental and Leasing	9,969	↑ 3.11%	1,304	↑ 1.88%	\$1,499	↓ -7.70%
Retail Trade	45,813	↑ 0.94%	2,739	↓ -1.33%	\$790	↑ 7.34%
Transportation & Warehousing	43,255	↑ 1.02%	882	↓ -1.34%	\$1,236	↑ 8.14%
Utilities	2,170	↑ 2.55%	35	↑ 2.94%	\$2,021	↑ 9.01%
Wholesale Trade	28,443	↑ 5.72%	1,777	↑ 1.66%	\$1,819	↑ 13.47%

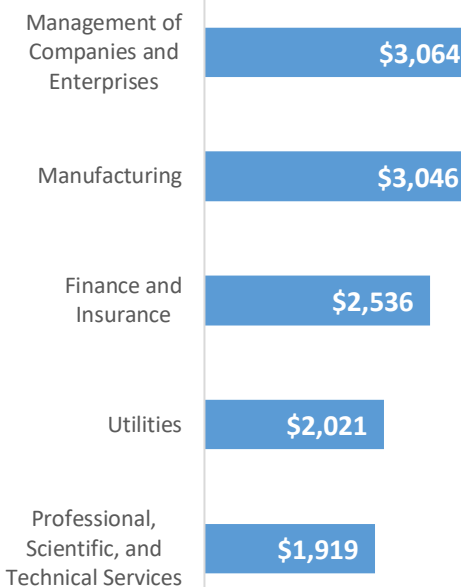
* These industries exclude county data (jobs and wages) that are not available due to non-disclosure requirements.

D = This item is not available due to non-disclosure requirements.

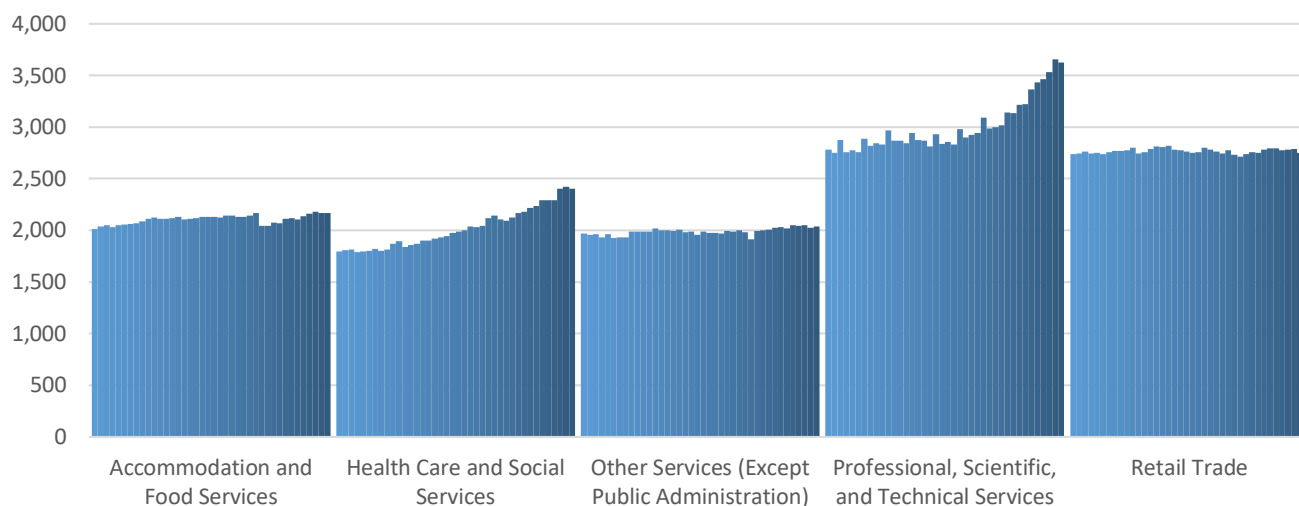
Top 5 Largest Industries by Jobs (past 10 years)



Top 5 Paying Industries by Average Weekly Wage



Top 5 Largest Industries by Establishments (past 10 years)



Source:

*Quarterly Census of Employment and Wages,
Indiana Dept. of Workforce Development*

For more information, contact:

Mike Petro

Regional Workforce Analyst

317.537.1316

gpetro@dwd.in.gov

