



HOOSIERS BY THE NUMBERS

Your premier source for labor market information for Indiana.



INDUSTRY SECTOR SNAPSHOT

Economic Growth Region 12

Quarter 3 2022

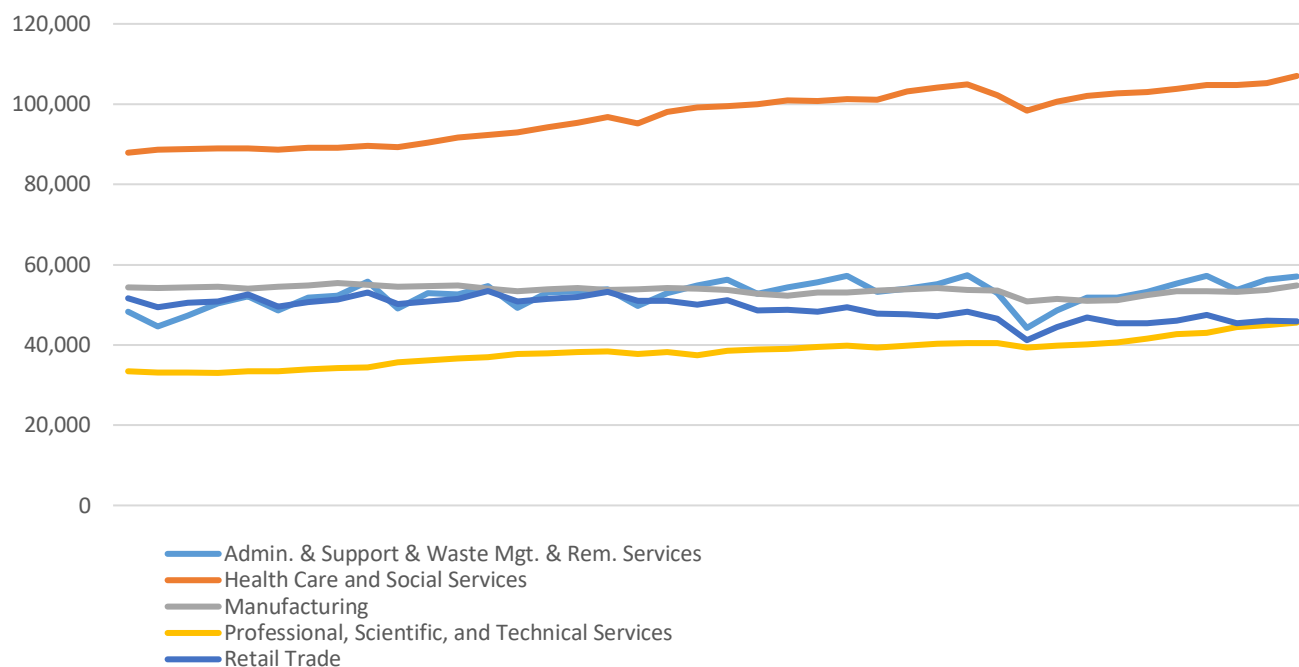
Marion County

Industry	Jobs	Previous Year	Establishments	Previous Year	Average Weekly Wage	Previous Year
Total	613,109	↑ 3.62%	24,542	↑ 4.00%	\$1,328	↑ 8.76%
Accommodation and Food Services	45,238	↑ 8.72%	2,174	↑ 2.60%	\$530	↑ 9.50%
Admin. & Support & Waste Mgt. & Rem. Services	56,983	↑ 2.93%	1,756	↑ 7.93%	\$871	↑ 12.68%
Agriculture, Forestry, Fishing and Hunting	532	↑ 4.93%	36	↑ 12.50%	\$1,149	↑ 9.22%
Arts, Entertainment, and Recreation	10,150	↑ 11.55%	334	↑ 2.45%	\$1,395	↑ 4.03%
Construction	32,727	↑ 4.64%	1,800	↑ 1.64%	\$1,516	↑ 10.74%
Educational Services	38,310	↑ 2.36%	496	↑ 8.06%	\$1,143	↑ 8.24%
Finance and Insurance	27,331	↑ 2.90%	1,514	↑ 4.20%	\$1,710	↑ 8.92%
Health Care and Social Services	107,027	↑ 3.02%	2,379	↑ 6.25%	\$1,500	↑ 14.59%
Information	8,035	↓ -6.80%	422	↑ 9.04%	\$1,639	↑ 7.05%
Management of Companies and Enterprises	8,674	↑ 7.07%	205	↑ 4.06%	\$1,971	↑ 7.18%
Manufacturing	54,892	↑ 2.98%	928	↓ -0.54%	\$1,748	↑ 4.80%
Mining	263	↑ 45.30%	13	↑ 30.00%	\$1,714	↑ 9.87%
Other Services (Except Public Administration)	19,208	↑ 3.24%	2,032	↑ 0.15%	\$1,025	↑ 8.35%
Professional, Scientific, and Technical Services	45,561	↑ 6.75%	3,507	↑ 8.91%	\$1,900	↑ 5.15%
Public Administration	27,924	↓ -5.23%	159	↓ -2.45%	\$1,366	↑ 1.94%
Real Estate and Rental and Leasing	10,048	↑ 5.87%	1,320	↑ 4.43%	\$1,498	↑ 27.06%
Retail Trade	45,928	↓ -0.17%	2,781	↓ -0.47%	\$818	↑ 9.21%
Transportation & Warehousing	44,639	↑ 7.82%	900	↑ 7.66%	\$1,209	↑ 5.87%
Utilities	2,137	↓ -0.05%	34	↓ -5.56%	\$1,849	↓ -22.77%
Wholesale Trade	27,500	↑ 5.90%	1,749	↑ 2.70%	\$1,577	↑ 10.36%

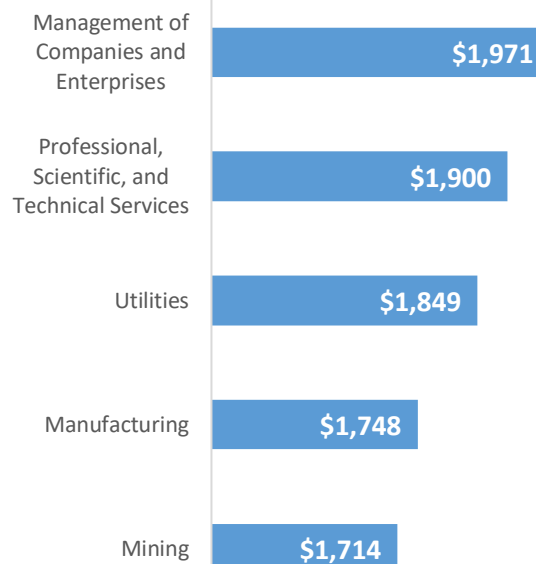
* These industries exclude county data (jobs and wages) that are not available due to non-disclosure requirements.

D = This item is not available due to non-disclosure requirements.

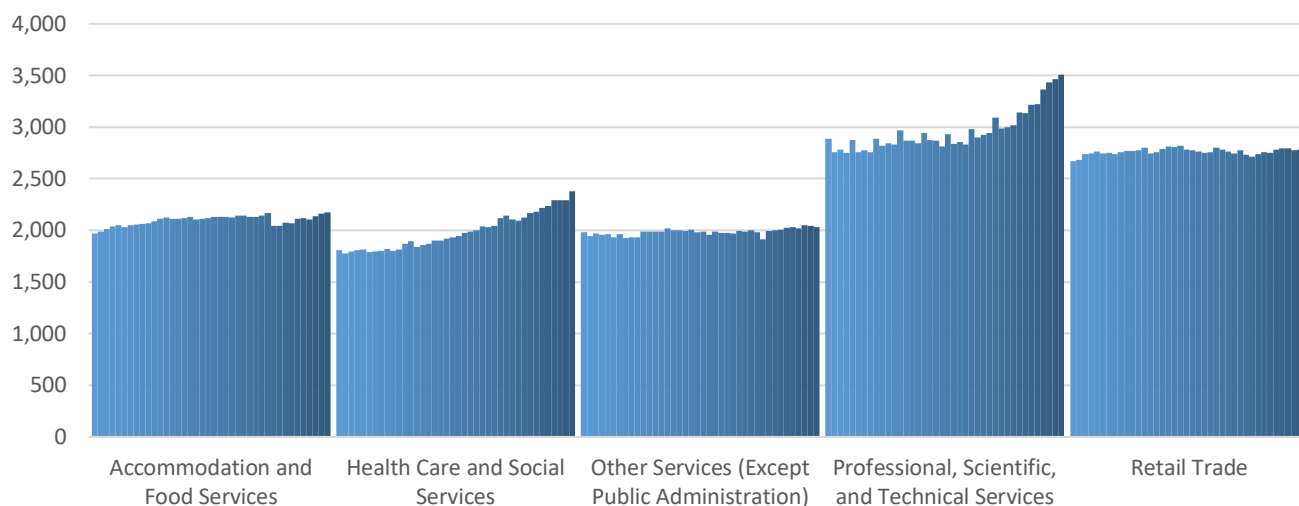
Top 5 Largest Industries by Jobs (past 10 years)



Top 5 Paying Industries by Average Weekly Wage



Top 5 Largest Industries by Establishments (past 10 years)



Source:

*Quarterly Census of Employment and Wages,
Indiana Dept. of Workforce Development*

For more information, contact:

Mike Petro

Regional Workforce Analyst

317.537.1316

gpetro@dwd.in.gov

