



**April 2022**  
**Labor Market Review**

**Reported by: Jillian Gregory**

Regional Workforce Analyst  
[Email Jillian](#)  
jgregory@dwd.in.gov

Tel: 812-270-9467

## Economic Growth Region 10

Statistical Data Report for April 2022, Released June 2022

### State Employment and Unemployment

Unemployment rates were lower in April in 13 states and the District of Columbia and stable in 37 states, the U.S. Bureau of Labor Statistics reported. All 50 states and the district had jobless rate decreases from a year earlier. The national unemployment rate, 3.6 percent, was unchanged over the month but was 2.4 percentage points lower than in April 2021.

Nonfarm payroll employment increased in 11 states and was essentially unchanged in 39 states and the District of Columbia in April 2022. Over the year, nonfarm payroll employment increased in 49 states and the district and was essentially unchanged in 1 state.

Nebraska and Utah had the lowest jobless rates in April, 1.9 percent each. The rates in these two states set new series lows, as did the rates in the following eight states (all state series begin in 1976): Alabama (2.8 percent), Arizona (3.2 percent), Idaho (2.6 percent), Kentucky (3.9 percent), Minnesota (2.2 percent), Mississippi (4.1 percent), South Dakota (2.3 percent), and West Virginia (3.6 percent). The District of Columbia had the highest unemployment rate, 5.8 percent, followed by New Mexico, 5.3 percent. In total, 18 states had unemployment rates lower than the U.S. figure of 3.6 percent, 10 states and the district had higher rates, and 22 states had rates that were not appreciably different from that of the nation.

In April, 13 states and the District of Columbia had over-the-month unemployment rate decreases, the largest of which was in Maryland (-0.4 percentage point). Iowa, Maine, and Minnesota had the next largest rate decreases (-0.3 percentage point each). Thirty-seven states had jobless rates that were not notably different from those of a month earlier, though some had changes that were at least as large numerically as the significant changes.

April 2022 Labor Force Estimates (not seasonally adjusted)						
Area	Labor Force	Employed	Unemployed	Apr-22	Mar-22	Apr-21
U.S.	163,449,000	157,991,000	5,458,000	3.3%	3.8%	5.7%
IN	3,357,756	3,285,479	72,277	2.2%	2.7%	3.9%
EGR 10	154,602	151,734	2,868	1.9%	2.6%	3.3%
Clark Co.	62,829	61,637	1,192	1.9%	2.7%	3.5%
Crawford Co.	4,743	4,629	114	2.4%	3.4%	4.0%
Floyd Co.	42,331	41,615	716	1.7%	2.4%	3.1%
Harrison Co.	20,466	20,120	346	1.7%	2.5%	2.7%
Scott Co.	10,568	10,313	255	2.4%	3.1%	4.1%
Washington Co.	13,665	13,420	245	1.8%	2.8%	3.5%
Corydon	1,411	1,382	29	2.1%	2.7%	4.2%
Jeffersonville	25,962	25,472	490	1.9%	2.6%	3.9%
New Albany	18,850	18,460	390	2.1%	2.9%	4.1%
Salem	2,654	2,588	66	2.5%	3.7%	5.2%
Scottsburg	2,749	2,657	92	3.3%	3.5%	3.9%

Source: Indiana Department of Workforce Development, Research & Analysis, Local Area Unemployment Statistics | Unemployment Statistics Released: 05/22 | Notes: The data displayed are presented as estimates only. The most recent month's data are always preliminary and are revised when the next month's data are released.



### Economic Growth Region (EGR) 10

Clark, Crawford, Floyd, Harrison, Scott, and Washington Counties

### Unemployment Rates by State (seasonally adjusted): April 2022

**U.S. - 3.6%**

Illinois - 4.6%

**Indiana - 2.2%**

Kentucky - 3.9%

Michigan - 4.3%

Ohio - 4%

Source: U.S. Department of Labor, Bureau of Labor Statistics

### Unemployment Rank by County (of 92 counties): April 2022

#14 - Crawford (2.4%)

#17 - Scott (2.4%)

#42 - Clark (1.9%)

#62 - Washington (1.8%)

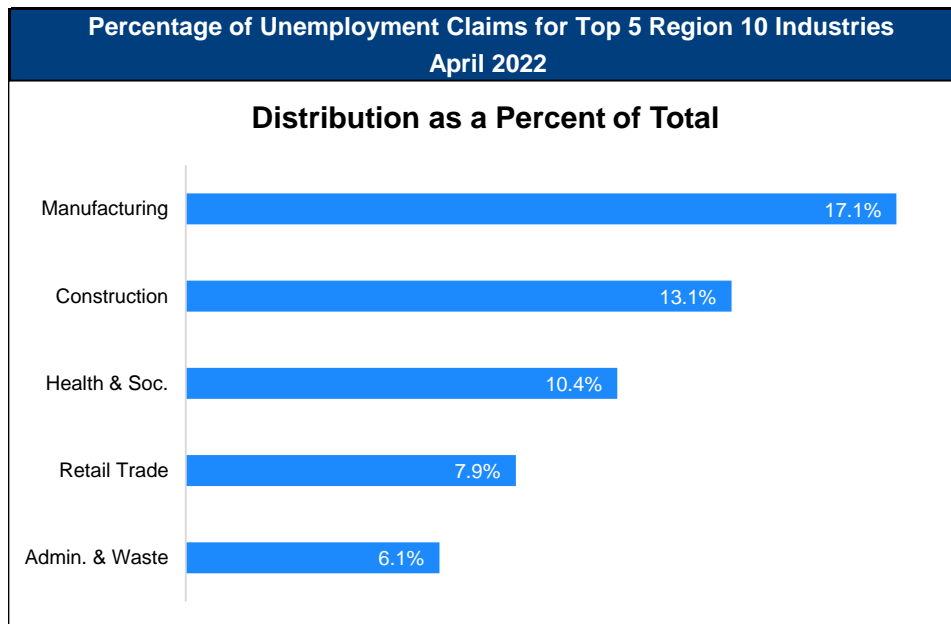
#67 - Floyd (1.7%)

#69 - Harrison (1.7%)

Source: Indiana Department of Workforce Development, Research and Development, Local Area Unemployment Statistics

Consumer Price Index (CPI-U Change), Unadjusted Percent Change to April 2022 from				
CPI Item	Apr-21	Mar-22	Apr-21	Mar-22
	U.S. City		Midwest Region*	
All Items	8.3%	0.6%	8.2%	0.5%
Food & Beverages	9.0%	1.0%	10.7%	1.3%
Housing	6.5%	0.6%	6.3%	0.4%
Apparel	5.4%	-1.4%	4.5%	-0.7%
Transportation	19.9%	0.9%	19.4%	0.6%
Medical Care	3.2%	0.3%	2.2%	0.2%
Recreation	4.3%	0.4%	4.6%	0.7%
Education & Communication	1.0%	-0.2%	0.0%	-0.1%
Other Goods & Services	5.7%	0.4%	6.0%	0.4%

\*Midwest region = Midwest Urban Average. Midwest Region includes Illinois, Indiana, Iowa, Kansas, Michigan, Minnesota, Missouri, Nebraska, North Dakota, Ohio, South Dakota and Wisconsin | Source: U.S. Bureau of Labor Statistics



Source: Indiana Department of Workforce Development, Research and Analysis

## WARN Notices

WARN Notices for Region 10 for April 2022				
Company	City	County	# of workers affected	Notice Date

**There are no WARN Notices for April 2022 for EGR 10.**

Source: Indiana Department of Workforce Development, WARN Notices | For information on WARN Act requirements, you may go to the U.S. Department of Labor Employment Training Administration Fact Sheet:

<https://www.doleta.gov/programs/factsht/warn.htm>

## Unemployment Claims: April 2022

### Region 10

#### Initial Claims

04/02/22 - 80(D)  
04/09/22 - 143(D)  
04/16/22 - 115(D)  
04/23/22 - 161(D)  
04/30/22 - 136(D)

#### Continued Claims

04/02/22 - 374  
04/09/22 - 354  
04/16/22 - 348  
04/23/22 - 330  
04/30/22 - 302

#### Total Claims

04/02/22 - 454  
04/09/22 - 497  
04/16/22 - 463  
04/23/22 - 491  
04/30/22 - 438

### State of Indiana

#### Initial Claims

04/02/22 - 3,383  
04/09/22 - 6,576  
04/16/22 - 5,758  
04/23/22 - 6,399  
04/30/22 - 5,779

#### Continued Claims

04/02/22 - 21,762  
04/09/22 - 23,849  
04/16/22 - 23,327  
04/23/22 - 20,459  
04/30/22 - 18,646

#### Total Claims

04/02/22 - 25,145  
04/09/22 - 30,425  
04/16/22 - 29,085  
04/23/22 - 26,858  
04/30/22 - 24,425

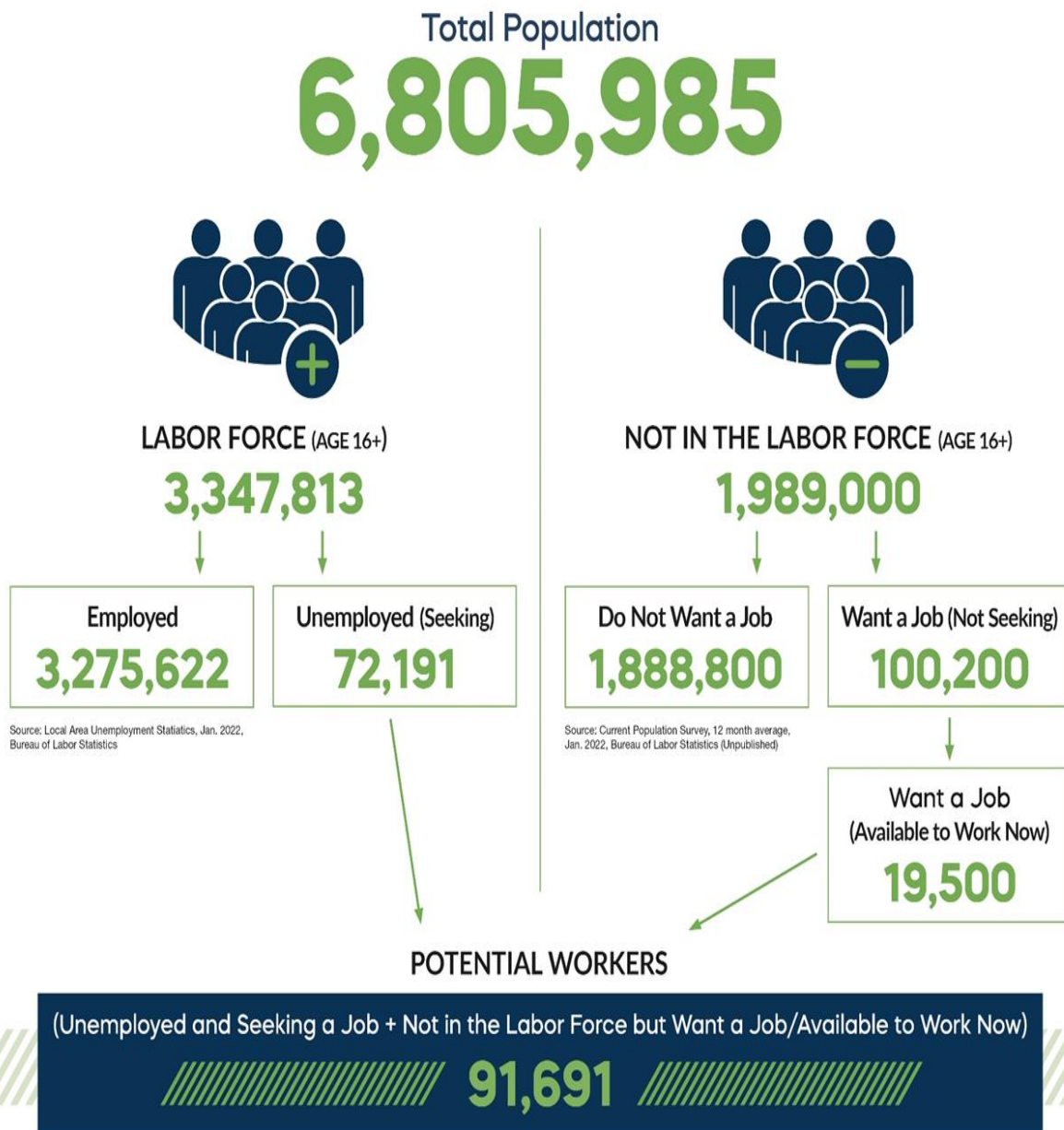
(D) indicates item is affected by non-disclosure issues relating to industry or ownership status | Source: Indiana Department of Workforce Development, Research and Development

Frequently Listed Jobs	
Top 20 job listings in Region 10 in the past month	
Rank	Occupations
1	Registered Nurses
2	Nursing Assistants
3	Customer Service Representatives
4	Licensed Practical and Licensed Vocational Nurses
5	Medical Assistants
6	Stockers and Order Fillers
7	Critical Care Nurses
8	Industrial Production Managers
9	Physical Therapists
10	Production Workers, All Other
11	Maids and Housekeeping Cleaners
12	Packers and Packagers, Hand
13	Radiologic Technologists and Technicians
14	Maintenance and Repair Workers, General
15	Shipping, Receiving, and Inventory Clerks
16	Emergency Medical Technicians
17	First-Line Supervisors of Production and Operating Workers
18	Food Preparation Workers
19	Tellers
20	Packaging and Filling Machine Operators and Tenders

Source: Indiana Workforce Development, Indiana Career Connect

Applicant Pool	
Top 20 occupations desired by applicants on their resumes in the past 12 months	
Occupations	# of applicants
Production Workers, All Other	683
Assemblers and Fabricators, All Other	527
Customer Service Representatives	489
Helpers--Production Workers	484
Cashiers	404
Office Clerks, General	317
Laborers and Freight, Stock, and Material Movers, Hand	303
Managers, All Other	228
Heavy and Tractor-Trailer Truck Drivers	215
Office and Administrative Support Workers, All Other	206
Receptionists and Information Clerks	206
Welders, Cutters, Solderers, and Brazers	203
Retail Salespersons	175
Packers and Packagers, Hand	172
Industrial Truck and Tractor Operators	148
Executive Secretaries and Executive Administrative Assistants	145
Bookkeeping, Accounting, and Auditing Clerks	140
Construction and Related Workers, All Other	140
Waiters and Waitresses	138
Secretaries and Administrative Assistants, Except Legal, Medical, and Executive	134

Source: Indiana Workforce Development, Indiana Career Connect



More about the US Bureau of Labor Statistics data sources used within:  
 Local Area Unemployment Statistics (LAUS): Captures Indiana's labor force, which includes those currently employed and those who are unemployed and actively seeking work.  
 Current Population Survey (CPS): Captures individuals not participating in Indiana's Labor Force. This set includes non-participants that do not want a job (i.e. retirees and students) and those that want a job, but are not actively seeking work.  
 U.S. Census Bureau, Indiana Population 2021.

Resource: Notes on Using Current Population Survey (CPS) Subnational Data and Differences Between CPS and LAUS Estimates



SNAPSHOT

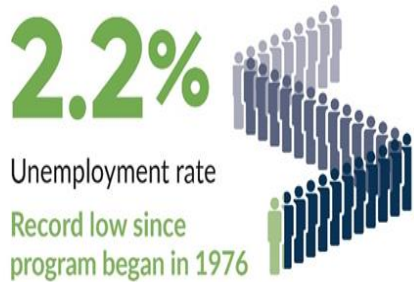
# April 2022 Indiana Employment

Released May 20, 2022



## UNEMPLOYMENT RATE

*\*seasonally adjusted*



March 2022 Indiana



National unemployment rate is



## LABOR FORCE PARTICIPATION RATE

Labor force participation rate



National labor force participation rate



Open job postings

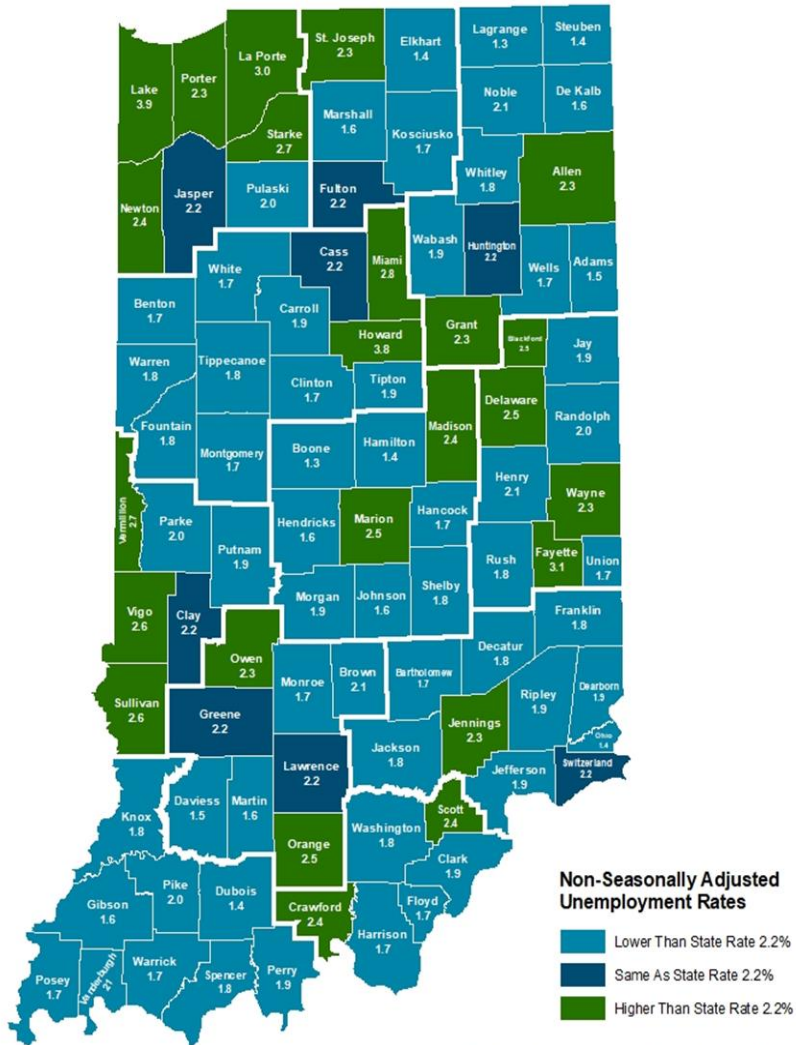


People receiving unemployment benefits



Source: Local Area Unemployment Statistics, Bureau of Labor Statistics; Indiana Career Connect

## County Unemployment Rates April 2022



Indiana Non-Seasonally Adjusted Rate 2.2%  
Indiana Seasonally Adjusted Rate 2.2%  
Source: DWD, Local Area Unemployment Statistics



### Questions?

Please contact the DWD  
Research and Analysis  
Regional Labor Analyst  
listed below:

Jillian A. Gregory  
Regional Labor Analyst  
Research and Analysis

[Indiana Department of  
Workforce Development](https://www.in.gov/dwd/)

500 Industrial Drive  
Room 1305  
Lawrenceburg, IN 47024

812-537-2485

[jgregory@dwd.in.gov](mailto:jgregory@dwd.in.gov)