



# HOOSIERS BY THE NUMBERS

Your premier source for labor market information for Indiana.

**DWD**

INDIANA DEPARTMENT OF  
**WORKFORCE**  
DEVELOPMENT

## LABOR MARKET REVIEW



**April 2025**  
**Labor Market Review**

**Reported by: Kathy Jaworski**

Regional Workforce Analyst

[Email Kathy](#)

[kjaworski@dwd.in.gov](mailto:kjaworski@dwd.in.gov)

Tel: 219-841-6347

**DWD**

INDIANA DEPARTMENT OF  
**WORKFORCE**  
DEVELOPMENT



# HOOSIERS BY THE NUMBERS

Your premier source for labor market information for Indiana.



## LABOR MARKET REVIEW

# Economic Growth Region 1

Statistical Data Report for April 2025, Released June 2025

## State Employment and Unemployment

Unemployment rates were higher in April in 3 states and the District of Columbia, lower in 2 states, and stable in 45 states, the U.S. Bureau of Labor Statistics reported. Twenty-six states and the District had jobless rate increases from a year earlier, 1 state had a decrease, and 23 states had little change. The national unemployment rate was unchanged at 4.2 percent but was 0.3 percentage point higher than in April 2024. In April 2025, nonfarm payroll employment increased in 5 states and was essentially unchanged in 45 states and the District of Columbia. Over the year, nonfarm payroll employment increased in 16 states and was essentially unchanged in 34 states and the District.



## Economic Growth Region (EGR) 1

Jasper, Lake, LaPorte, Newton, Porter, Pulaski and Starke Counties

April 2025 Labor Force Estimates (not seasonally adjusted)						
Area	Labor Force	Employed	Unemployed	Apr-25	Mar-25	Apr-24
U.S.	170,622,000	164,043,000	6,580,000	3.9%	4.2%	3.5%
IN	3,476,454	3,373,288	103,166	3.0%	3.4%	3.6%
Lake-Porter-Jasper Div	352,210	338,102	14,108	4.0%	4.7%	4.6%
MichCity-LaPorte MSA	51,767	49,980	1,787	3.5%	4.1%	4.0%
EGR 1	420,433	403,996	16,437	3.9%	4.6%	4.5%
Lake Co.	240,498	230,025	10,473	4.4%	5.1%	5.0%
Porter Co.	88,364	85,473	2,891	3.3%	3.9%	3.8%
LaPorte Co.	51,767	49,980	1,787	3.5%	4.1%	4.0%
Newton Co.	6,665	6,443	222	3.3%	4.1%	3.7%
Jasper Co.	16,683	16,161	522	3.1%	4.0%	3.6%
Starke Co.	9,513	9,137	376	4.0%	4.7%	4.6%
Pulaski Co.	6,943	6,777	166	2.4%	3.1%	3.1%
East Chicago	11,008	10,456	552	5.0%	6.4%	6.1%
Hammond	36,339	34,698	1,641	4.5%	5.3%	5.3%
Munster	11,936	11,540	396	3.3%	4.2%	3.9%
Dyer	8,406	8,156	250	3.0%	3.5%	4.2%
Schererville	15,751	15,271	480	3.0%	3.6%	3.8%
Crown Point	16,711	16,083	628	3.8%	4.2%	4.7%
Griffith	9,422	8,973	449	4.8%	4.9%	4.3%
Highland	12,256	11,816	440	3.6%	4.1%	4.1%
Gary	24,298	22,456	1,842	7.6%	7.9%	8.0%
Merrillville	18,046	17,172	874	4.8%	5.7%	5.6%
Hobart	15,317	14,663	654	4.3%	4.9%	4.6%
Lake Station	5,502	5,197	305	5.5%	7.4%	6.6%
Portage	18,943	18,206	737	3.9%	4.7%	4.5%
Chesterton	7,416	7,199	217	2.9%	4.0%	3.9%
Valparaiso	17,616	17,090	526	3.0%	3.4%	3.4%
Michigan City	13,653	13,078	575	4.2%	4.6%	4.5%
LaPorte	11,082	10,747	335	3.0%	3.7%	3.8%

## Unemployment Rates by State (seasonally adjusted): April 2025

U.S. - 4.2%

Illinois - 4.8%

Indiana - 3.9%

Kentucky - 5.2%

Michigan - 5.5%

Ohio - 4.9%

Source: U.S. Department of Labor, Bureau of Labor Statistics

## Unemployment Rank by County (of 92 counties): April 2025

#2 - Lake (4.4%)

#3 - Starke (4%)

#9 - LaPorte (3.5%)

#14 - Newton (3.3%)

#15 - Porter (3.3%)

#27 - Jasper (3.1%)

#81 - Pulaski (2.4%)

Source: Indiana Department of Workforce Development, Research & Analysis, Local Area Unemployment Statistics | Unemployment Statistics Released:05/25 | Notes: The data displayed are presented as estimates only. The most recent month's data are always preliminary and are revised when the next month's data are released. Gary Division has been renamed to Lake-Porter-Jasper Counties Division but still includes Newton County. Michigan City-LaPorte MSA: Laporte County

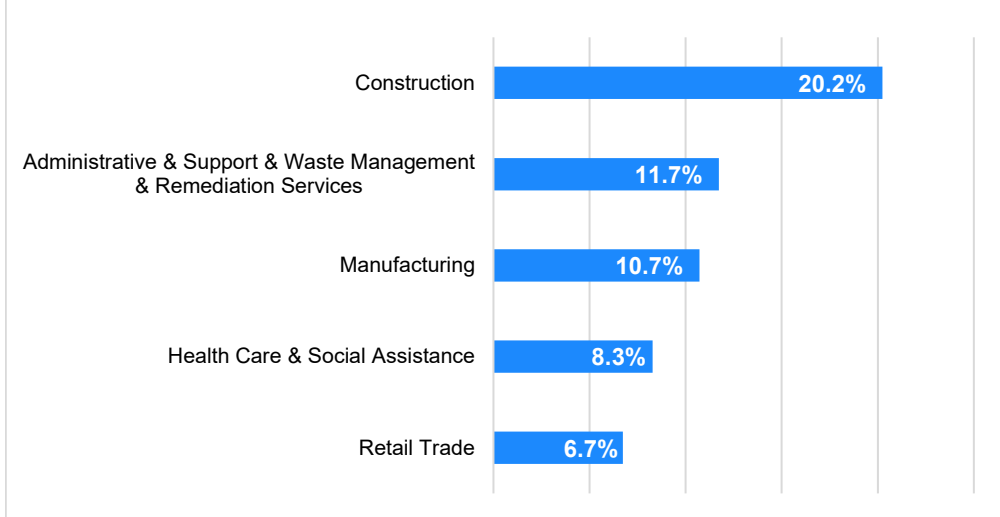
Source: Indiana Department of Workforce Development, Research and Development, Local Area Unemployment Statistics

Statewide Average Weekly Hours & Earnings by Industry for April 2025			
Industry	Avg. Earnings per hr	Avg. # of hours worked per week	Avg. Earnings per week
Construction	\$35.02	38.2	\$1,337.76
Manufacturing	\$26.25	42.6	\$1,118.25
Durable Goods	\$27.24	44.5	\$1,212.18
Fabricated Metal Product Manufacturing	\$26.18	43.2	\$1,130.98
Transportation Equipment Manufacturing	\$28.67	44.4	\$1,272.95
Non-Durable Goods	\$23.40	37.8	\$884.52
Retail Trade	\$21.02	28.3	\$594.87
Financial Activities	\$28.61	38.0	\$1,087.18
Health Care and Social Assistance	\$30.65	32.6	\$999.19
Accommodation and Food Services	\$16.77	23.2	\$389.06
Food Services and Drinking Places	\$16.24	23.2	\$376.77

Source: Indiana Department of Workforce Development, Current Employment Statistics

### Percentage of Unemployment Claims for Top 5 Region 1 Industries April 2025

#### Distribution as a Percent of Total



Source: Indiana Department of Workforce Development, Research and Analysis

### WARN Notices

WARN Notices for Region 1 for April 2025				
Company	City	County	# affected	Notice Date
There are no WARN Notices for April 2025 for Region 1.				
Significant WARN Notices for nearby locations				
Company	City	County	# Affected	Notice Date
Three (3) Illinois companies	Chicago	Cook, IL	279	Apr-25

Source: Indiana Department of Workforce Development, WARN Notices | For information on WARN Act requirements, you may go to the U.S. Department of Labor Employment Training Administration Fact Sheet: <https://www.doleta.gov/programs/factsht/warn.htm>

### Unemployment Claims: April 2025

#### Region 1

##### Initial Claims

04/05/25 - 308(D)

04/12/25 - 337(D)

04/19/25 - 321(D)

04/26/25 - 297(D)

##### Continued Claims

04/05/25 - 2,790

04/12/25 - 2,538

04/19/25 - 2,369

04/26/25 - 2,317

##### Total Claims

04/05/25 - 3,098

04/12/25 - 2,875

04/19/25 - 2,690

04/26/25 - 2,614

#### State of Indiana

##### Initial Claims

04/05/25 - 2,496

04/12/25 - 3,104

04/19/25 - 2,609

04/26/25 - 2,566

##### Continued Claims

04/05/25 - 22,840

04/12/25 - 22,250

04/19/25 - 21,736

04/26/25 - 21,208

##### Total Claims

04/05/25 - 25,336

04/12/25 - 25,354

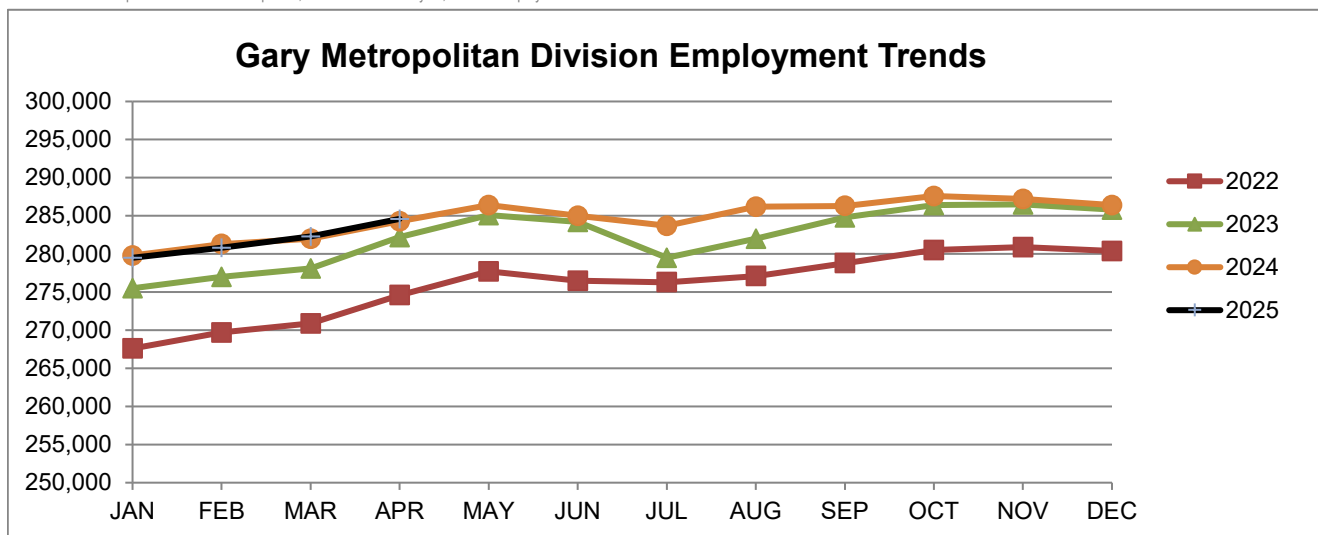
04/19/25 - 24,345

04/26/25 - 23,774

Notes: (D) Indicates one or more counties are excluded due to non-disclosure issues | Numbers subject to weekly revision | Source: Indiana Department of Workforce Development, Research and Analysis

Gary Metropolitan Division							
Wage and Salaried Employment	April 2025			# Change	% Change	# Change	% Change
Industry	Apr-25	Mar-25	Apr-24	Mar-25 to Apr-25		Apr-24 to Apr-25	
<b>Total Nonfarm</b>	<b>284,600</b>	<b>282,300</b>	<b>284,300</b>	<b>2,300</b>	<b>0.8%</b>	<b>300</b>	<b>0.1%</b>
<b>Total Private</b>	<b>252,100</b>	<b>249,700</b>	<b>251,000</b>	<b>2,400</b>	<b>1.0%</b>	<b>1,100</b>	<b>0.4%</b>
Goods Producing	51,500	50,900	51,800	600	1.2%	-300	-0.6%
Service Providing	233,100	231,400	232,500	1,700	0.7%	600	0.3%
Private Service Providing	200,600	198,800	199,200	1,800	0.9%	1,400	0.7%
Mining and Logging	100	100	100	0	0.0%	0	0.0%
Mining, Logging and Construction	17,400	16,800	17,700	600	3.6%	-300	-1.7%
Construction	17,300	16,700	17,600	600	3.6%	-300	-1.7%
Manufacturing	34,100	34,100	34,100	0	0.0%	0	0.0%
Durable Goods	25,000	25,000	25,100	0	0.0%	-100	-0.4%
Trade, Transportation and Utilities	61,200	61,200	60,200	0	0.0%	1,000	1.7%
Wholesale Trade	11,300	11,400	10,600	-100	-0.9%	700	6.6%
Retail Trade	32,000	31,900	31,600	100	0.3%	400	1.3%
General Merchandise Stores	7,100	7,100	7,000	0	0.0%	100	1.4%
Other Gen Merch Stores	5,200	5,200	5,200	0	0.0%	0	0.0%
Transportation, Warehousing and Utilities	17,900	17,900	18,000	0	0.0%	-100	-0.6%
Information	1,900	1,900	1,900	0	0.0%	0	0.0%
Financial Activities	9,300	9,300	9,400	0	0.0%	-100	-1.1%
Professional and Business Services	28,800	28,200	29,100	600	2.1%	-300	-1.0%
Employment Services	3,200	3,100	3,200	100	3.2%	0	0.0%
Education and Health Services	52,200	51,800	51,200	400	0.8%	1,000	2.0%
Educational Services	6,000	5,800	5,900	200	3.5%	100	1.7%
Health Care and Social Assistance	46,200	46,000	45,300	200	0.4%	900	2.0%
General Medical and Surgical Hospitals	13,900	13,900	13,600	0	0.0%	300	2.2%
Leisure and Hospitality	32,500	31,800	32,800	700	2.2%	-300	-0.9%
Arts, Entertainment and Recreation	3,700	3,600	3,900	100	2.8%	-200	-5.1%
Food Services and Drinking Places	28,800	28,200	28,900	600	2.1%	-100	-0.4%
Other Services	14,700	14,600	14,600	100	0.7%	100	0.7%
<b>Total Government</b>	<b>32,500</b>	<b>32,600</b>	<b>33,300</b>	<b>-100</b>	<b>-0.3%</b>	<b>-800</b>	<b>-2.4%</b>
Federal Government	2,000	2,000	2,000	0	0.0%	0	0.0%
State Government	4,500	4,400	4,400	100	2.3%	100	2.3%
Local Government	26,000	26,200	26,900	-200	-0.8%	-900	-3.4%
Local Government Educational Services	15,200	15,400	15,500	-200	-1.3%	-300	-1.9%

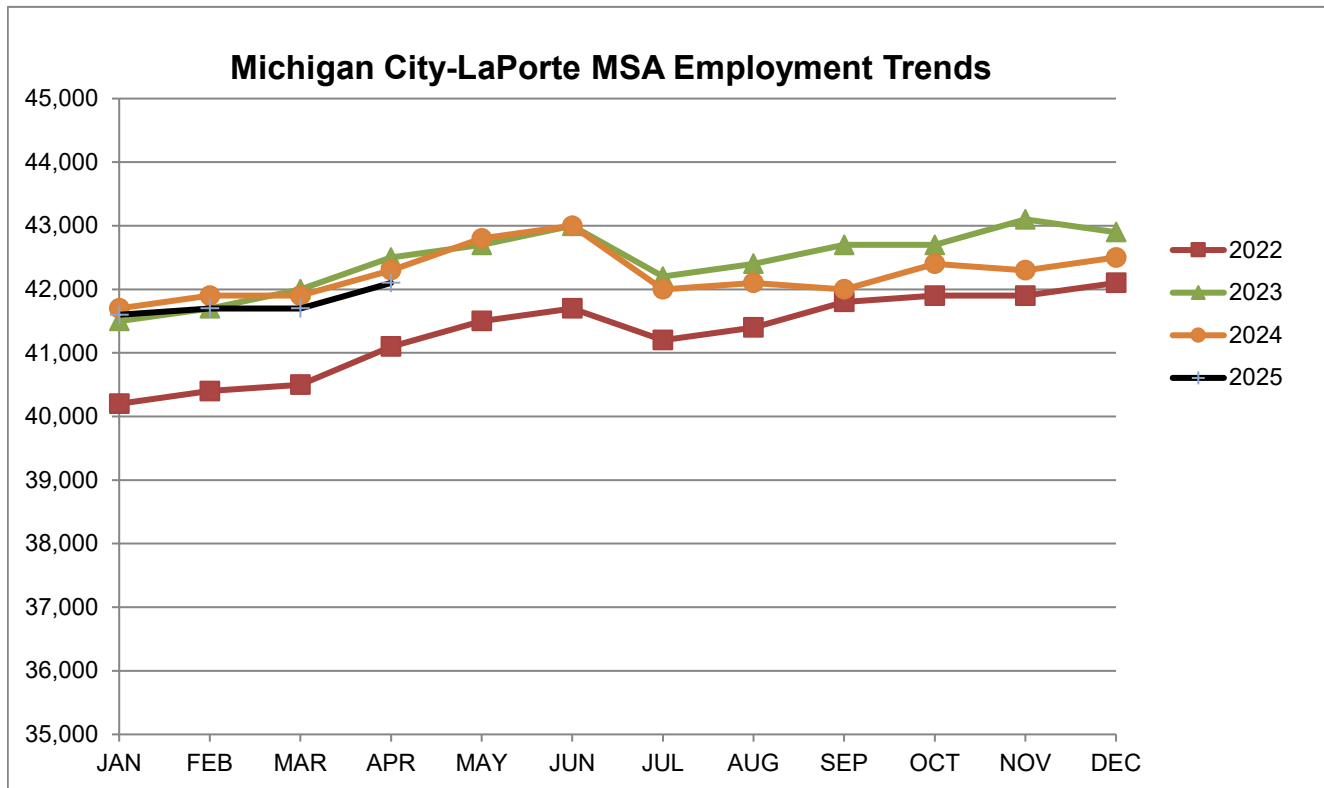
Source: Indiana Dept of Workforce Development, Research and Analysis, Current Employment Statistics



Source: Indiana Department of Workforce Development, Research & Analysis, Current Employment Statistics | Note: Historical data for the most recent 4 years (both seasonally adjusted and not seasonally adjusted) are revised near the beginning of each calendar year, prior to the release of January estimates for statewide data.

Michigan City-LaPorte MSA							
Wage and Salaried Employment	April 2025			# Change	% Change	# Change	% Change
Industry	Apr-25	Mar-25	Apr-24	Mar-25 to Apr-25		Apr-24 to Apr-25	
<b>Total Nonfarm</b>	<b>42,100</b>	<b>41,700</b>	<b>42,300</b>	<b>400</b>	<b>1.0%</b>	<b>-200</b>	<b>-0.5%</b>
<b>Total Private</b>	<b>35,600</b>	<b>35,200</b>	<b>35,900</b>	<b>400</b>	<b>1.1%</b>	<b>-300</b>	<b>-0.8%</b>
Goods Producing	10,900	10,700	10,800	200	1.9%	100	0.9%
Service Providing	31,200	31,000	31,500	200	0.7%	-300	-1.0%
Private Service Providing	24,700	24,500	25,100	200	0.8%	-400	-1.6%
Mining, Logging and Construction	2,400	2,200	2,300	200	9.1%	100	4.4%
Manufacturing	8,500	8,500	8,500	0	0.0%	0	0.0%
Trade, Transportation & Utilities	8,200	8,300	8,600	-100	-1.2%	-400	-4.7%
Wholesale Trade	1,900	1,900	1,900	0	0.0%	0	0.0%
Retail Trade	4,800	4,900	4,900	-100	-2.0%	-100	-2.0%
Information	200	200	200	0	0.0%	0	0.0%
Financial Activities	1,300	1,300	1,300	0	0.0%	0	0.0%
Professional and Business Services	2,600	2,600	2,700	0	0.0%	-100	-3.7%
Education and Health Services	6,000	5,900	5,900	100	1.7%	100	1.7%
Leisure and Hospitality	4,900	4,700	4,900	200	4.3%	0	0.0%
Other Services	1,500	1,500	1,500	0	0.0%	0	0.0%
<b>Total Government</b>	<b>6,500</b>	<b>6,500</b>	<b>6,400</b>	<b>0</b>	<b>0.0%</b>	<b>100</b>	<b>1.6%</b>
Federal Government	200	200	200	0	0.0%	0	0.0%
State Government	2,000	2,000	1,900	0	0.0%	100	5.3%
Local Government	4,300	4,300	4,300	0	0.0%	0	0.0%
Local Government Educational Services	2,400	2,400	2,400	0	0.0%	0	0.0%

Source: Indiana Dept of Workforce Development, Research and Analysis, Current Employment Statistics



Source: Indiana Department of Workforce Development, Research & Analysis, Current Employment Statistics | Note: Historical data for the most recent 4 years (both seasonally adjusted and not seasonally adjusted) are revised near the beginning of each calendar year, prior to the release of January estimates for statewide data.

Frequently Listed Jobs	
Top 20 job listings by number of openings in Region 1 in the past month	
Rank	Occupations
1	Accountants and Auditors
2	Advertising Sales Agents
3	Agricultural Equipment Operators
4	Child, Family, and School Social Workers
5	Coating, Painting, and Spraying Machine Setters, Operators, and Tenders
6	Cooks, Institution and Cafeteria
7	Credit Analysts
8	Customer Service Representatives
9	Dietetic Technicians
10	Driver/Sales Workers
11	Education Administrators, Postsecondary
12	Electrical and Electronic Engineering Technologists and Technicians
13	Electricians
14	Electro-Mechanical and Mechatronics Technologists and Technicians
15	Engineers, All Other
16	Environmental Engineers
17	Farmworkers and Laborers, Crop, Nursery, and Greenhouse
18	First-Line Supervisors of Farming, Fishing, and Forestry Workers
19	First-Line Supervisors of Food Preparation and Serving Workers
20	First-Line Supervisors of Housekeeping and Janitorial Workers

Source: Indiana Workforce Development, Indiana Career Connect

Applicant Pool	
Top 20 occupations desired by applicants on their resumes in the past 12 months	
Occupations	# of applicants
Production Workers, All Other	867
Helpers--Production Workers	782
Laborers and Freight, Stock, and Material Movers, Hand	740
Customer Service Representatives	595
Assemblers and Fabricators, All Other	534
Heavy and Tractor-Trailer Truck Drivers	510
Cashiers	509
Construction Laborers	396
Office Clerks, General	335
Carpenters	295
Industrial Truck and Tractor Operators	256
Managers, All Other	255
Maintenance and Repair Workers, General	254
Welders, Cutters, Solderers, and Brazers	243
Janitors and Cleaners, Except Maids and Housekeeping Cleaners	233
Retail Salespersons	232
Office and Administrative Support Workers, All Other	229
Construction and Related Workers, All Other	226
Extraction Workers, All Other	215
Receptionists and Information Clerks	214

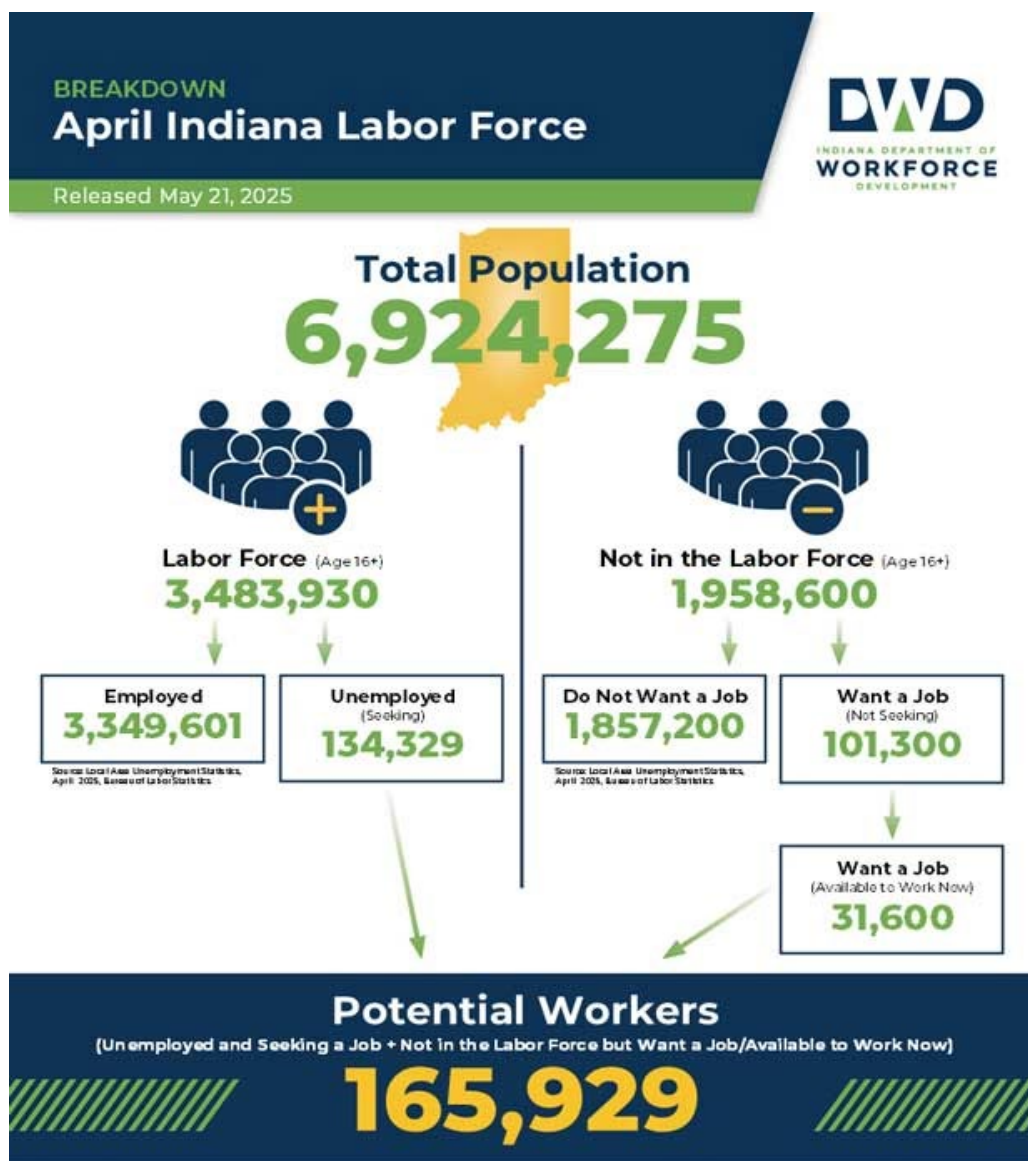
Source: Indiana Workforce Development, Indiana Career Connect

\* Due to an upgrade in the reporting system, there is a notable change in Job Postings recorded. The tool used to measure Job Postings was upgraded to prevent malicious or false postings. While customers adjust to the enhancements a drop in the record is to be expected.



Consumer Price Index (CPI-U Change), Unadjusted Percent Change to April 2025 from						
CPI Item	Apr-24	Mar-25	Apr-24	Mar-25	Apr-24	Mar-25
	Chicago-Naperville-Elgin, IN-IL-WI		U.S. City		Midwest Region*	
All Items	3.1%	0.1%	2.3%	0.3%	2.4%	0.2%
Food & Beverages	2.6%	0.3%	2.7%	0.0%	2.4%	-0.2%
Housing	5.3%	0.4%	4.0%	0.4%	4.8%	0.2%
Apparel	-0.4%	-5.1%	-0.7%	-1.1%	-0.9%	-2.5%
Transportation	-1.8%	0.1%	-1.5%	0.9%	-1.7%	0.8%
Medical Care	3.1%	0.0%	2.7%	0.4%	1.4%	0.2%
Recreation	3.2%	-0.2%	1.6%	-0.1%	1.6%	0.0%
Education & Communication	0.5%	-1.1%	0.2%	-0.2%	0.3%	0.0%
Other Goods & Services	5.5%	2.1%	3.6%	0.3%	3.9%	0.8%

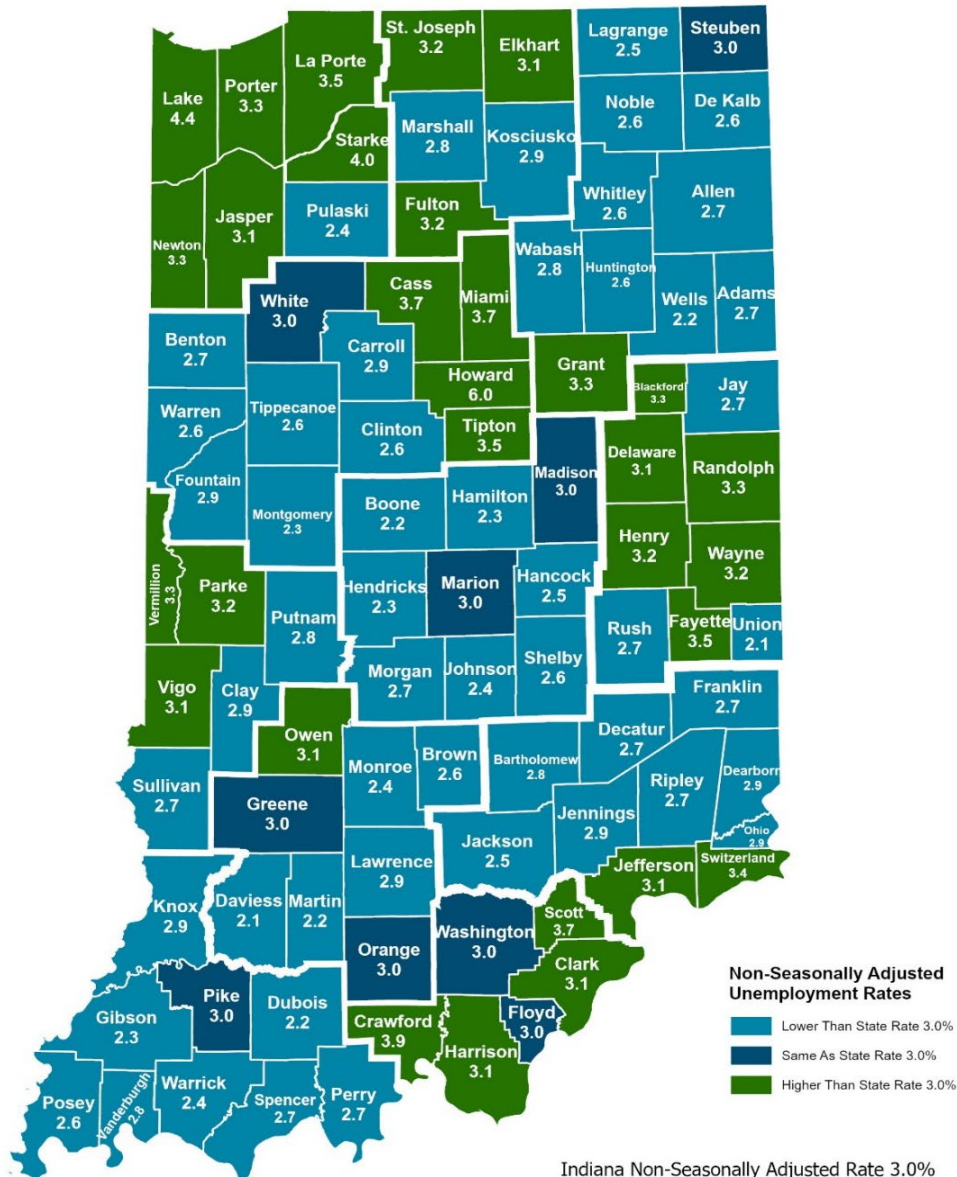
\*Midwest region = Midwest Urban Average. Midwest Region includes Illinois, Indiana, Iowa, Kansas, Michigan, Minnesota, Missouri, Nebraska, North Dakota, Ohio, South Dakota and Wisconsin | Source: U.S. Bureau of Labor Statistics



More about the U.S. Bureau of Labor Statistics data sources used within:  
Local Area Unemployment Statistics (LAUS) captures Indiana's labor force which includes those currently employed and those who are unemployed and actively seeking work.  
Current Population Survey (CPS) captures individuals not participating in Indiana's labor force. This set includes non-participants that do not want a job (i.e. retirees and students) and those that want a job but are not actively seeking work.  
U.S. Census Bureau's Indiana Population 2024.

Resource Notes on Using Current Population Survey (CPS) Subnational Data and Differences Between CPS and LAUS Estimates

## County Unemployment Rates April 2025



Indiana Non-Seasonally Adjusted Rate 3.0%  
 Indiana Seasonally Adjusted Rate 3.9%  
 Source: DWD, Local Area Unemployment Statistics



### Questions?

Please contact the DWD  
 Research and Analysis  
 Regional Labor Analyst  
 listed below:

Kathy Jaworski  
 Regional Labor Analyst  
 Research and Analysis

[Indiana Department of  
 Workforce Development](https://www.in.gov/dwd/)

219-841-6347

[kjaworski@dwd.in.gov](mailto:kjaworski@dwd.in.gov)