

LABOR MARKET REVIEW



March 2021 Labor Market Review

Reported by: Kathy Jaworski

Regional Workforce Analyst
[Email Kathy](#)
kjaworski@dwd.in.gov

Tel: 219-841-6347

LABOR MARKET REVIEW

Economic Growth Region 1

Statistical Data Report for March 2021, Released May 2021

State Employment and Unemployment

Unemployment rates were lower in March in 20 states and the District of Columbia and stable in 30 states, the U.S. Bureau of Labor Statistics reported. Forty states and the District had jobless rate increases from a year earlier and 10 states had little or no change. The national unemployment rate, 6.0 percent, edged down by 0.2 percentage point over the month, but was 1.6 points higher than in March 2020. Nonfarm payroll employment increased in 29 states and was essentially unchanged in 21 states and the District of Columbia in March 2021. Over the year, nonfarm payroll employment decreased in 46 states and the District and was essentially unchanged in 4 states.



Economic Growth Region (EGR) 1

Jasper, Lake, LaPorte, Newton, Porter, Pulaski and Starke Counties

Unemployment Rates by State (seasonally adjusted): March 2021

U.S. - 6%

Illinois - 7.1%

Indiana - 3.9%

Kentucky - 5%

Michigan - 5.1%

Ohio - 4.7%

Source: U.S. Department of Labor, Bureau of Labor Statistics

Unemployment Rank by County (of 92 counties): March 2021

#1 - Lake (7.6%)

#2 - LaPorte (6.7%)

#9 - Starke (5.5%)

#11 - Porter (5.3%)

#16 - Jasper (5%)

#18 - Newton (5%)

#50 - Pulaski (4.1%)

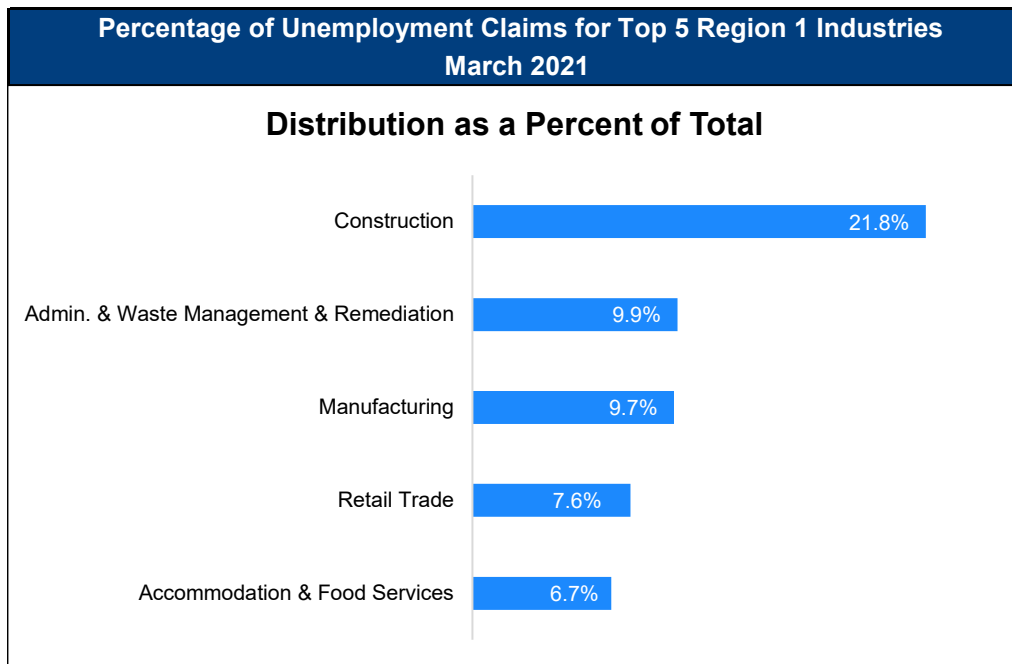
Source: Indiana Department of Workforce Development, Research and Development, Local Area Unemployment Statistics
Labor Market Review EGR 1

March 2021 Labor Force Estimates (not seasonally adjusted)						
Area	Labor Force	Employed	Unemployed	Mar-21	Feb-21	Mar-20
U.S.	160,397,000	150,493,000	9,905,000	6.2%	6.6%	4.5%
IN	3,296,498	3,142,693	153,805	4.7%	4.7%	3.7%
Gary Metro Div	323,539	301,350	22,189	6.9%	6.8%	5.5%
MichCity-LaPorte MSA	46,800	43,678	3,122	6.7%	6.9%	5.0%
EGR 1	386,045	359,960	26,085	6.8%	6.7%	5.4%
Lake Co.	220,125	203,305	16,820	7.6%	7.5%	5.9%
Porter Co.	81,969	77,664	4,305	5.3%	5.3%	4.6%
LaPorte Co.	46,800	43,678	3,122	6.7%	6.9%	5.0%
Newton Co.	6,361	6,045	316	5.0%	5.3%	5.4%
Jasper Co.	15,084	14,336	748	5.0%	5.1%	5.1%
Starke Co.	9,466	8,948	518	5.5%	6.1%	5.3%
Pulaski Co.	6,240	5,984	256	4.1%	4.2%	3.9%
East Chicago	9,741	8,520	1,221	12.5%	11.9%	8.5%
Hammond	32,758	29,958	2,800	8.5%	8.3%	6.5%
Munster	10,985	10,445	540	4.9%	4.3%	4.0%
Dyer	8,224	7,867	357	4.3%	4.1%	4.2%
Schererville	15,116	14,356	760	5.0%	5.0%	4.2%
Crown Point	14,894	14,021	873	5.9%	5.4%	4.8%
Griffith	8,321	7,790	531	6.4%	6.6%	5.5%
Highland	11,776	11,036	740	6.3%	5.7%	5.2%
Gary	26,268	22,841	3,427	13.0%	13.1%	7.9%
Merrillville	16,343	14,911	1,432	8.8%	8.4%	6.5%
Hobart	14,019	12,971	1,048	7.5%	7.4%	6.5%
Lake Station	4,714	4,224	490	10.4%	9.8%	8.2%
Portage	17,015	16,009	1,006	5.9%	6.2%	5.4%
Chesterton	6,711	6,369	342	5.1%	5.4%	4.1%
Valparaiso	15,897	15,063	834	5.2%	4.7%	4.2%
Michigan City	12,536	11,504	1,032	8.2%	8.1%	5.2%
LaPorte	9,374	8,733	641	6.8%	7.1%	5.1%

Source: Indiana Department of Workforce Development, Research & Analysis, Local Area Unemployment Statistics | Unemployment Statistics Released:04/21 | Notes: The data displayed are presented as estimates only. The most recent month's data are always preliminary and are revised when the next month's data are released.

Statewide Average Weekly Hours & Earnings by Industry for March 2021			
Industry	Avg. Earnings per hr	Avg. # of hours worked per week	Avg. Earnings per week
Construction	\$28.26	38.1	\$1,076.71
Manufacturing	\$21.10	43.3	\$913.63
Durable Goods	\$22.26	43.6	\$970.54
Fabricated Metal Product Manufacturing	\$20.82	41.1	\$855.70
Transportation Equipment Manufacturing	\$23.53	38.3	\$901.20
Non-Durable Goods	\$18.32	42.7	\$782.26
Retail Trade	\$16.27	30.7	\$499.49
Financial Activities	\$25.55	36.3	\$927.47
Health Care and Social Assistance	\$25.05	33.6	\$841.68
Accommodation and Food Services	\$13.46	22.9	\$308.23
Food Services and Drinking Places	\$13.33	22.5	\$299.93

Source: Indiana Department of Workforce Development, Current Employment Statistics



Source: Indiana Department of Workforce Development, Research and Analysis

WARN Notices

WARN Notices for Region 1 for March 2021				
Company	City	County	# affected	Notice Date

There are no WARN Notices for March 2021 for Region 1.

Significant WARN Notices for nearby locations				
Company	City	County	# Affected	Notice Date
Four Chicago companies	Chicago, IL	Cook	1482	March-21

Source: Indiana Department of Workforce Development, WARN Notices | For information on WARN Act requirements, you may go to the U.S. Department of Labor Employment Training Administration Fact Sheet: <https://www.doleta.gov/programs/factsheet/warn.htm>

Unemployment Claims: March 2021

Region 1

Initial Claims

03/06/21 - 2,493
03/13/21 - 2,569
03/20/21 - 2,441
03/27/21 - 2,000

Continued Claims

03/06/21 - 6,645
03/13/21 - 4,222
03/20/21 - 5,963
03/27/21 - 5,570

Total Claims

03/06/21 - 9,138
03/13/21 - 6,791
03/20/21 - 8,404
03/27/21 - 7,570

State of Indiana

Initial Claims

03/06/21 - 9,237
03/13/21 - 13,965
03/20/21 - 13,045
03/27/21 - 9,260

Continued Claims

03/06/21 - 65,352
03/13/21 - 59,186
03/20/21 - 58,181
03/27/21 - 55,558

Total Claims

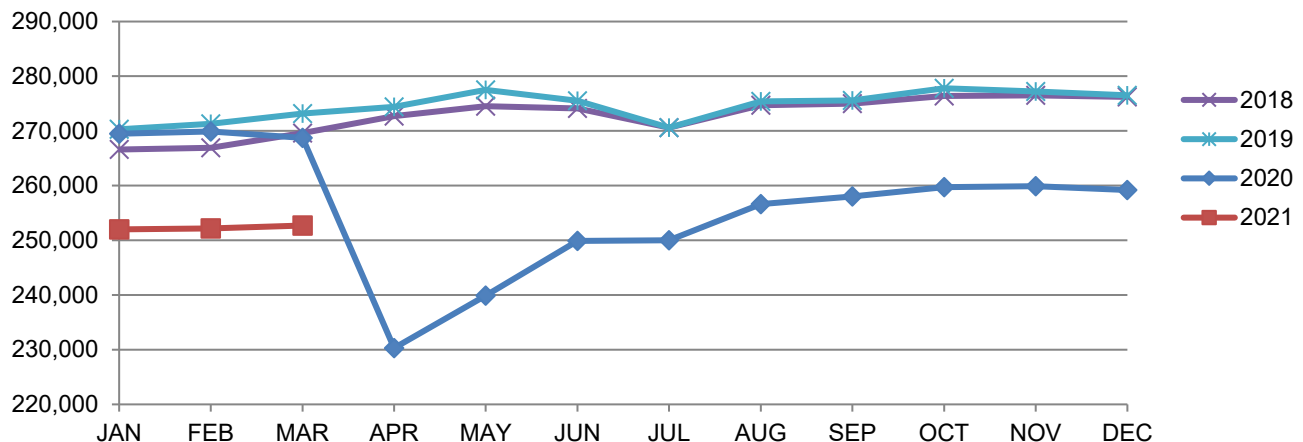
03/06/21 - 74,589
03/13/21 - 73,151
03/20/21 - 71,226
03/27/21 - 64,818

(D) Indicates one or more counties are excluded due to non-disclosure issues | Source: Indiana Department of Workforce Development, Research and Analysis

Gary Metropolitan Division							
Wage and Salaried Employment	March 2021			# Change	% Change	# Change	% Change
Industry	Mar-21	Feb-21	Mar-20	Feb-21 to Mar-21		Mar-20 to Mar-21	
Total Nonfarm	252,700	252,200	268,700	500	0.2%	-16,000	-6.0%
Total Private	221,500	221,000	235,200	500	0.2%	-13,700	-5.8%
Goods Producing	46,900	46,500	50,600	400	0.9%	-3,700	-7.3%
Service Providing	205,800	205,700	218,100	100	0.1%	-12,300	-5.6%
Private Service Providing	174,600	174,500	184,600	100	0.1%	-10,000	-5.4%
Mining and Logging	100	100	200	0	0.0%	-100	-50.0%
Mining, Logging and Construction	13,900	13,400	15,900	500	3.7%	-2,000	-12.6%
Construction	13,800	13,300	15,700	500	3.8%	-1,900	-12.1%
Manufacturing	33,000	33,100	34,700	-100	-0.3%	-1,700	-4.9%
Durable Goods	24,600	24,600	26,500	0	0.0%	-1,900	-7.2%
Trade, Transportation and Utilities	56,700	56,100	57,700	600	1.1%	-1,000	-1.7%
Wholesale Trade	8,900	8,800	9,100	100	1.1%	-200	-2.2%
Retail Trade	31,000	30,600	32,300	400	1.3%	-1,300	-4.0%
General Merchandise Stores	6,400	6,500	6,600	-100	-1.5%	-200	-3.0%
Other Gen Merch Stores	4,600	4,600	4,500	0	0.0%	100	2.2%
Transportation, Warehousing and Utilities	16,800	16,700	16,300	100	0.6%	500	3.1%
Information	1,600	1,600	1,800	0	0.0%	-200	-11.1%
Financial Activities	8,400	8,400	8,700	0	0.0%	-300	-3.5%
Professional and Business Services	22,500	23,600	24,300	-1,100	-4.7%	-1,800	-7.4%
Employment Services	3,300	3,400	3,700	-100	-2.9%	-400	-10.8%
Education and Health Services	46,100	46,200	49,600	-100	-0.2%	-3,500	-7.1%
Educational Services	4,600	4,700	5,400	-100	-2.1%	-800	-14.8%
Health Care and Social Assistance	41,500	41,500	44,200	0	0.0%	-2,700	-6.1%
General Medical and Surgical Hospitals	13,500	13,500	14,000	0	0.0%	-500	-3.6%
Leisure and Hospitality	29,400	28,800	32,000	600	2.1%	-2,600	-8.1%
Arts, Entertainment and Recreation	4,400	4,200	5,800	200	4.8%	-1,400	-24.1%
Food Services and Drinking Places	25,000	24,600	26,200	400	1.6%	-1,200	-4.6%
Other Services	9,900	9,800	10,500	100	1.0%	-600	-5.7%
Total Government	31,200	31,200	33,500	0	0.0%	-2,300	-6.9%
Federal Government	1,800	1,900	2,000	-100	-5.3%	-200	-10.0%
State Government	4,000	4,000	4,300	0	0.0%	-300	-7.0%
Local Government	25,400	25,300	27,200	100	0.4%	-1,800	-6.6%
Local Government Educational Services	14,800	14,700	15,900	100	0.7%	-1,100	-6.9%

Source: Indiana Dept of Workforce Development, Research and Analysis, Current Employment Statistics

Gary Metropolitan Division Employment Trends

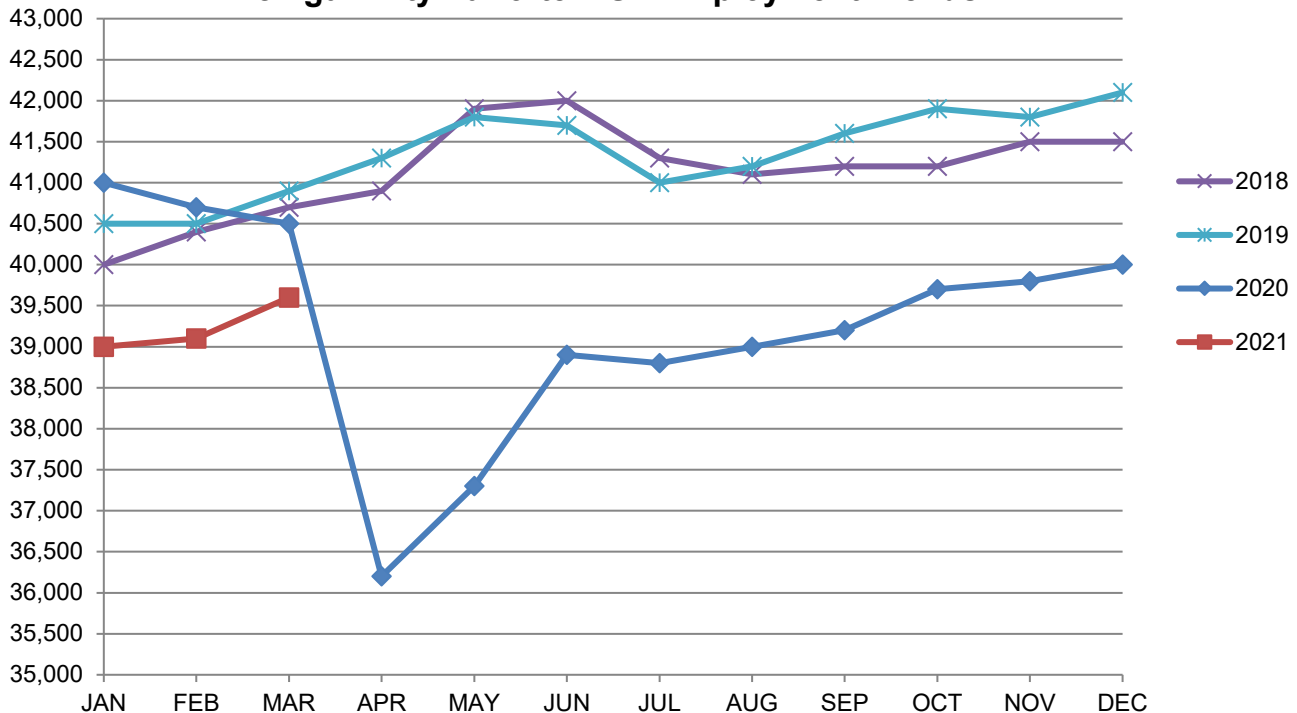


Source: Indiana Department of Workforce Development, Research & Analysis, Current Employment Statistics | Note: Historical data for the most recent 4 years (both seasonally adjusted and not seasonally adjusted) are revised near the beginning of each calendar year, prior to the release of January estimates for statewide data.

Michigan City-LaPorte MSA						
Wage and Salaried Employment	March 2021			# Change	% Change	# Change % Change
Industry	Mar-21	Feb-21	Mar-20	Feb-21 to Mar-21	Mar-20 to Mar-21	
Total Nonfarm	39,600	39,100	40,500	500	1.3%	-900 -2.2%
Total Private	33,400	33,000	34,000	400	1.2%	-600 -1.8%
Goods Producing	9,800	9,400	9,900	400	4.3%	-100 -1.0%
Service Providing	29,800	29,700	30,600	100	0.3%	-800 -2.6%
Private Service Providing	23,600	23,600	24,100	0	0.0%	-500 -2.1%
Mining, Logging and Construction	1,800	1,700	1,900	100	5.9%	-100 -5.3%
Manufacturing	8,000	7,700	8,000	300	3.9%	0 0.0%
Trade, Transportation & Utilities	8,400	8,400	8,000	0	0.0%	400 5.0%
Wholesale Trade	1,600	1,600	1,500	0	0.0%	100 6.7%
Retail Trade	4,900	4,900	4,900	0	0.0%	0 0.0%
Information	200	200	200	0	0.0%	0 0.0%
Financial Activities	1,200	1,200	1,200	0	0.0%	0 0.0%
Professional and Business Services	2,600	2,700	2,700	-100	-3.7%	-100 -3.7%
Education and Health Services	5,700	5,700	5,800	0	0.0%	-100 -1.7%
Leisure and Hospitality	4,400	4,300	5,100	100	2.3%	-700 -13.7%
Other Services	1,100	1,100	1,100	0	0.0%	0 0.0%
Total Government	6,200	6,100	6,500	100	1.6%	-300 -4.6%
Federal Government	200	200	200	0	0.0%	0 0.0%
State Government	1,900	1,900	2,000	0	0.0%	-100 -5.0%
Local Government	4,100	4,000	4,300	100	2.5%	-200 -4.7%
Local Government Educational Services	2,300	2,300	2,500	0	0.0%	-200 -8.0%

Source: Indiana Dept of Workforce Development, Research and Analysis, Current Employment Statistics

Michigan City-LaPorte MSA Employment Trends



Source: Indiana Department of Workforce Development, Research & Analysis, Current Employment Statistics | Note: Historical data for the most recent 4 years (both seasonally adjusted and not seasonally adjusted) are revised near the beginning of each calendar year, prior to the release of January estimates for statewide data.

Frequently Listed Jobs	
Top 20 job listings by number of openings in Region 1 in the past month	
Rank	Occupations
1	Production Workers, All Other
2	Personal Care Aides
3	Nursing Assistants
4	Correctional Officers and Jailers
5	Counter Attendants, Cafeteria, Food Concession, and Coffee Shop
6	Home Health Aides
7	Janitors and Cleaners, Except Maids and Housekeeping Cleaners
8	Registered Nurses
9	Heavy and Tractor-Trailer Truck Drivers
10	First-Line Supervisors of Food Preparation and Serving Workers
11	Helpers--Production Workers
12	Licensed Practical and Licensed Vocational Nurses
13	First-Line Supervisors of Production and Operating Workers
14	Landscaping and Groundskeeping Workers
15	Maintenance and Repair Workers, General
16	Merchandise Displayers and Window Trimmers
17	Driver/Sales Workers
18	Chefs and Head Cooks
19	Customer Service Representatives
20	First-Line Supervisors of Mechanics, Installers, and Repairers

Source: Indiana Workforce Development, Indiana Career Connect

Applicant Pool	
Top 20 occupations desired by applicants on their resumes in the past 12 months	
Occupations	# of applicants
Production Workers, All Other	3,906
Helpers--Production Workers	3,860
Laborers and Freight, Stock, and Material Movers, Hand	2,986
Assemblers and Fabricators, All Other	2,878
Cashiers	2,493
Customer Service Representatives	2,145
Stock Clerks and Order Fillers	1,479
Office Clerks, General	1,398
Managers, All Other	1,213
Construction Laborers	1,195
Retail Salespersons	1,190
Office and Administrative Support Workers, All Other	1,184
Nursing Assistants	1,078
Receptionists and Information Clerks	1,070
Industrial Truck and Tractor Operators	1,059
Janitors and Cleaners, Except Maids and Housekeeping Cleaners	1,057
Welders, Cutters, Solderers, and Brazers	1,040
Maintenance and Repair Workers, General	998
Executive Secretaries and Executive Administrative Assistants	953
Packers and Packagers, Hand	948

Source: Indiana Workforce Development, Indiana Career Connect

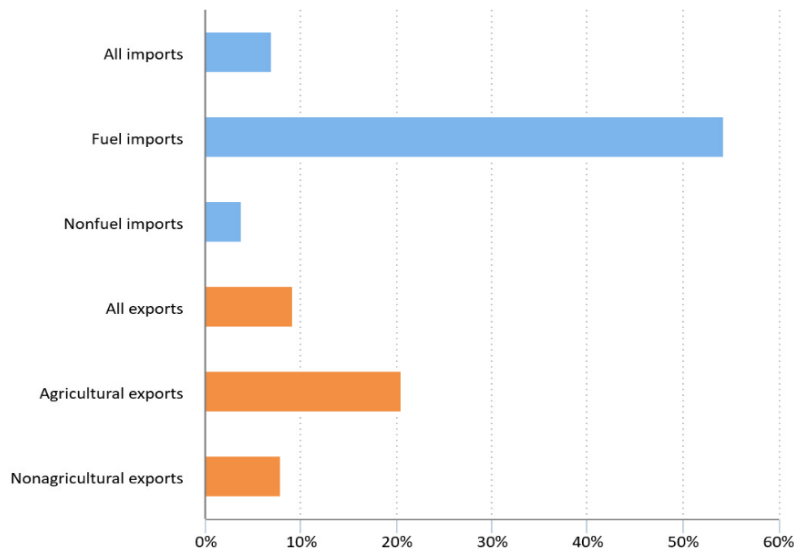
Consumer Price Index (CPI-U Change), Unadjusted Percent Change to March 2021 from						
CPI Item	Mar-20	Feb-21	Mar-20	Feb-21	Mar-20	Feb-21
	Chicago-Naperville-Elgin, IN-IL-WI		U.S. City		Midwest Region*	
All Items	2.6%	0.6%	2.6%	0.7%	3%	0.7%
Food & Beverages	4.9%	-0.2%	3.4%	0.2%	2.7%	0.1%
Housing	2.3%	0.6%	2.1%	0.3%	2.5%	0.5%
Apparel	-1.5%	1.0%	-2.5%	0.6%	-1.2%	-0.3%
Transportation	6.5%	3.2%	5.8%	3.2%	6.9%	3%
Medical Care	0.2%	0.0%	1.8%	0.1%	2.3%	-0.1%
Recreation	3.3%	-0.7%	1.1%	0.4%	1.9%	0.3%
Education & Communication	-0.8%	0.1%	1.5%	-0.3%	1.6%	0%
Other Goods & Services	-1.7%	0.0%	2.4%	0.6%	1.3%	1.1%

*Midwest region = Midwest Urban Average. Midwest Region includes Illinois, Indiana, Iowa, Kansas, Michigan, Minnesota, Missouri, Nebraska, North Dakota, Ohio, South Dakota and Wisconsin | Source: U.S. Bureau of Labor Statistics

Import prices up 6.9 percent, export prices up 9.1 percent for year ending March 2021

U.S. import prices increased 6.9 percent from March 2020 to March 2021, the largest over-the-year rise since January 2012.

Percent change in U.S. import and export price indexes, March 2020 to March 2021



Source: U.S. Bureau of Labor Statistics.

Import fuel prices rose 54.3 percent for the year ended in March 2021, the largest 12-month rise since February 2017. Nonfuel import prices rose 3.8 percent from March 2020 to March 2021, the largest 12-month increase since October 2011. U.S. export prices rose 9.1 percent from March 2020 to March 2021, the largest over-the-year increase since September 2011. Agricultural export prices advanced 20.5 percent over the past 12 months, the largest over-the-year rise since September 2011. The 12-month increase was primarily driven by rising prices for soybeans, corn, meat, and fruit. Nonagricultural export prices increased 7.9 percent over the past 12 months, the largest over-the-year advance since September 2011.

These data are from the International Price program. Import prices are subject to revision. To learn more, see "U.S. Import and Export Prices — March 2021." See more charts on import and export price trends in Charts related to the latest "U.S. Import and Export Price Indexes" news release. Bureau of Labor Statistics, U.S. Department of Labor, The Economics Daily, Import prices up 6.9 percent, export prices up 9.1 percent for year ending March 2021 at <https://www.bls.gov/opub/ted/2021/import-prices-up-6-9-percent-export-prices-up-9-1-percent-for-year-ending-march-2021.htm> (visited April 23, 2021).

County Unemployment Rates March 2021



INDIANA
DEPARTMENT OF
WORKFORCE
DEVELOPMENT

Questions?

Please contact the DWD
Research and Analysis
Regional Labor Analyst
listed below:

Kathy Jaworski

Regional Labor Analyst
Research and Analysis

[Indiana Department of
Workforce Development](https://www.in.gov/dwd/)

219-841-6347

kjaworski@dwd.in.gov

