



INDIANA
WORKFORCE
DEVELOPMENT
AND ITS **WorkOne** CENTERS

Indiana's Employment and Labor Force Estimates September 2016

10/19/2016



Key Points

The Indiana Unemployment Rate is 4.5% in September 2016.

Nationally the rate is 5.0%.

- Indiana's rate has remained the same over the year from September 2015 and currently is 4.5%.
- Indiana's Labor Force decreased over the month by 2,144 over the month, with a decrease in employment of 614 and unemployment decreased by 1,530.
- Indiana's Labor Force increased 75,566 with 75,425 in employment and 141 in unemployment since the start of the year.
- Indiana's Labor Force increased 104,214 over the year, and has increased 192,888 since January 2013.
- Total private employment stands at 42,100 above the March 2000 Peak.
- Private employment is up 161,800 since January 2013.
- Indiana's Labor Force Participation rate remained the same over the month and is currently 65.4%. This remains above the US Labor Force Participation rate which stands at 62.9%.



Key Points

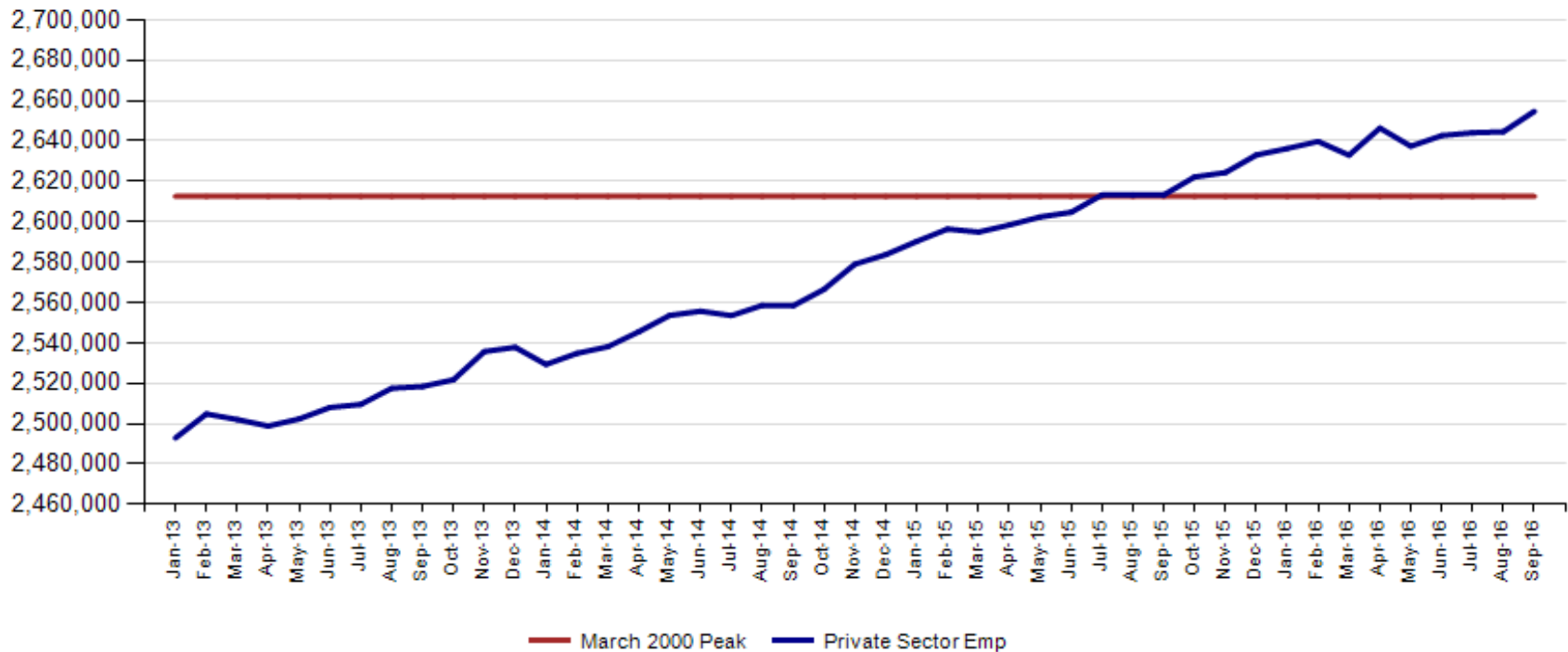
Indiana total private employment increased 10,100 over the month and has gains of 41,400 over the year. **This is the 15th month above the prior peak of 2,612,600.**

- **Indiana private employment now stands at 2,654,700.**
- **Private Education & Health Services had gains of 4,300.**
- **Construction had gains of 1,900.**
- **Leisure and Hospitality had gains of 1,800.**
- **Professional and Business Services had gains of 1,700.**
- **Manufacturing had gains of 1,600.**
- **Trade Transportaion & Utilities had declines of 1,300**



September Total private employment is now at 42,100 above the March 2000 Peak. This is the 15th month above the prior peak.

Indiana Private Sector Employment





September Indiana private sector employment increased by 10,100 jobs over the month and is up 41,400 over the year. Private Education increased by 4,500 over the month. There was across the board strength in many industries including Construction, Leisure and Hospitality, Professional & Business Services and Manufacturing.

IN Employment Change Over the Month, Year-to-Date and Over the Year (seasonally adjusted)

Industry	September 2015	December 2015	August 2016	September 2016	Month Change	Y-to-D Change	Y-to-Y Change
Private Educational & Health Services	453.9	459.5	472.9	477.2	4.3	17.7	23.3
.....Private Educational Services	69.7	73.2	73.0	77.5	4.5	4.3	7.8
.....Health Care & Social Assistance	384.2	386.3	399.9	399.7	-0.2	13.4	15.5
Manufacturing	520.0	520.2	513.5	515.1	1.6	-5.1	-4.9
Professional & Business Services	327.8	327.9	324.9	326.6	1.7	-1.3	-1.2
Financial Activities	131.3	131.3	132.8	133.5	0.7	2.2	2.2
Construction	126.5	131.0	130.2	132.1	1.9	1.1	5.6
Leisure and Hospitality	302.0	304.6	306.6	308.4	1.8	3.8	6.4
Trade, Transportation & Utilities	584.5	592.9	598.6	597.3	-1.3	4.4	12.8
.....Trade	445.7	447.6	456.7	455.0	-1.7	7.4	9.3
.....Transportation, Warehousing & Utilities	138.8	145.3	141.9	142.3	0.4	-3.0	3.5
All Other	167.3	165.7	165.1	164.5	-0.6	-1.2	-2.8
Total Private	2,613.3	2,633.1	2,644.6	2,654.7	10.1	21.6	41.4
Government (Includes Public Schools & Hospitals)	427.7	426.6	424.3	430.5	6.2	3.9	2.8
Total Nonfarm	3,041.0	3,059.7	3,068.9	3,085.2	16.3	25.5	44.2
United States Total Private	120,264.0	121,106.0	122,399.0	122,566.0	167.0	1,460.0	2,302.0



September Total nonfarm is 68,000 over the March 2000 peak.

IN Statewide Estimates (seasonally adjusted) -- September 2016

Supersector	Private Empl. Peak March 2000	Private Empl. Trough July 2009	August 2016	September 2016	Change Since Peak	Change Since Trough	Month to Month Change
Private Educational & Health Services	330.1	411.1	472.9	477.2	147.1	66.1	4.3
.....Private Educational Services	52.2	63.3	73.0	77.5	25.3	14.2	4.5
.....Health Care & Social Assistance	277.9	347.8	399.9	399.7	121.8	51.9	-0.2
Manufacturing	671.1	427.9	513.5	515.1	-156.0	87.2	1.6
Professional & Business Services	260.5	255.9	324.9	326.6	66.1	70.7	1.7
Financial Activities	145.7	130.7	132.8	133.5	-12.2	2.8	0.7
Construction	154.1	116.5	130.2	132.1	-22.0	15.6	1.9
Leisure and Hospitality	267.2	276.8	306.6	308.4	41.2	31.6	1.8
Trade, Transportation & Utilities	617.5	545.7	598.6	597.3	-20.2	51.6	-1.3
.....Trade	485.1	421.6	456.7	455.0	-30.1	33.4	-1.7
.....Transportation, Warehousing & Utilities	132.4	124.1	141.9	142.3	9.9	18.2	0.4
All Other	166.4	158.6	165.1	164.5	-1.9	5.9	-0.6
Total Private	2,612.6	2,323.2	2,644.6	2,654.7	42.1	331.5	10.1
Government (Includes Public Schools & Hospitals)	404.6	434.5	424.3	430.5	25.9	-4.0	6.2
Total Nonfarm	3,017.2	2,757.7	3,068.9	3,085.2	68.0	327.5	16.3
United States Total Private	110,875.0	108,170.0	122,399.0	122,566.0	11,691.0	14,396.0	167.0



Indiana job growth over the year remains under the National trend in private sector gains in September. Private Educational & Health Services, Construction and Trade Transportation and Utilities both are growing faster than the US over the year.

IN Employment Change Compared to the U.S.

Industry	Indiana Month to Month	U.S. Month to Month	Indiana vs U.S. Change	Indiana Year-to-Date	U.S. Year-to-Date	Indiana vs U.S. Change	Indiana Year-to-Year	U.S. Year-to-Year	Indiana vs U.S. Change
Private Educational & Health Services	0.9%	0.1%	OVER	3.9%	1.9%	OVER	5.1%	2.7%	OVER
.....Private Educational Services	6.2%	0.2%	OVER	5.9%	1.2%	OVER	11.2%	2.1%	OVER
.....Health Care & Social Assistance	-0.1%	0.1%	UNDER	3.5%	2.0%	OVER	4.0%	2.9%	OVER
Manufacturing	0.3%	-0.1%	OVER	-1.0%	-0.5%	UNDER	-0.9%	-0.4%	UNDER
Professional & Business Services	0.5%	0.3%	OVER	-0.4%	1.9%	UNDER	-0.4%	2.9%	UNDER
Financial Activities	0.5%	0.1%	OVER	1.7%	1.6%	OVER	1.7%	2.0%	UNDER
Construction	1.5%	0.3%	OVER	0.8%	1.1%	UNDER	4.4%	3.4%	OVER
Leisure and Hospitality	0.6%	0.1%	OVER	1.2%	1.5%	UNDER	2.1%	2.4%	UNDER
Trade, Transportation & Utilities	-0.2%	0.1%	UNDER	0.7%	1.1%	UNDER	2.2%	1.6%	OVER
.....Trade	-0.4%	0.1%	UNDER	1.7%	1.3%	OVER	2.1%	1.7%	OVER
.....Transportation, Warehousing & Utils	0.3%	-0.2%	OVER	-2.1%	0.3%	UNDER	2.5%	0.8%	OVER
All Other	-0.4%	0.2%	UNDER	-0.7%	-0.1%	UNDER	-1.7%	-0.1%	UNDER
Total Private	0.4%	0.1%	OVER	0.8%	1.2%	UNDER	1.6%	1.9%	UNDER
Government (Includes Public Schools & Hospitals)	1.5%	0.0%	OVER	0.9%	0.6%	OVER	0.7%	0.7%	UNDER
Total Nonfarm	0.5%	0.1%	OVER	0.8%	1.1%	UNDER	1.5%	1.7%	UNDER

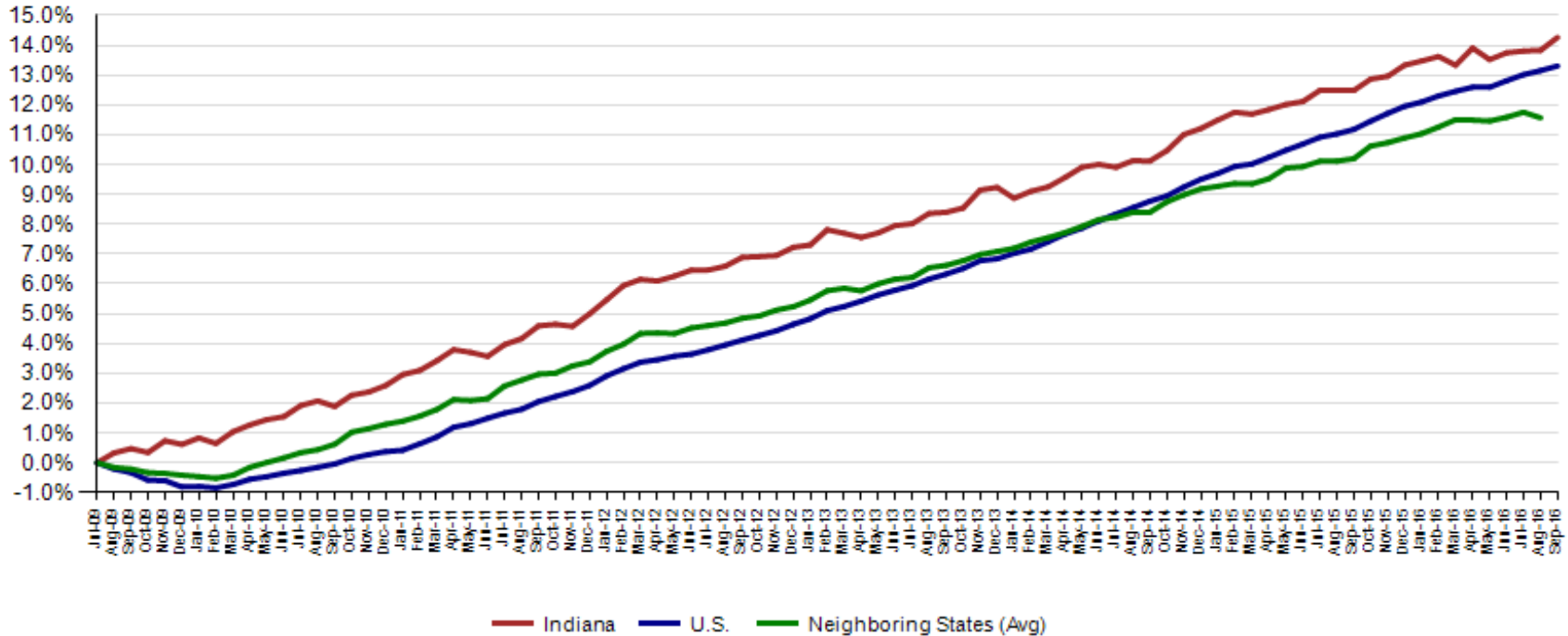


August Total Private preliminary estimates were revised down by 5,100. The change from July to August is now an increase of 500.

Revisions to August 2016 Estimates							
INDUSTRY TITLE	Jul	Aug Prel	Aug Rev	Revision	Chg from Jul	Prel Chg from Jul	
Total Nonfarm	3071.8	3075.0	3068.9	-6.1	-2.9	3.2	
Total Private	2644.1	2649.7	2644.6	-5.1	0.5	5.6	
Goods Producing	655.1	651.3	649.7	-1.6	-5.4	-3.8	
Service-Providing	2416.7	2423.7	2419.2	-4.5	2.5	7.0	
Private Service Providing	1989.0	1998.4	1994.9	-3.5	5.9	9.4	
Construction	132.5	130.2	132.5	2.3	0.0	-2.3	
Manufacturing	516.5	515.1	516.5	1.4	0.0	-1.4	
Trade, Transportation, and Utilities	601.0	599.7	601.0	1.3	0.0	-1.3	
Wholesale Trade	119.0	118.6	119.0	0.4	0.0	-0.4	
Retail Trade	340.0	339.6	340.0	0.4	0.0	-0.4	
Transportation, Warehousing, and Utilities	142.0	141.5	142.0	0.5	0.0	-0.5	
Information	31.4	31.7	31.4	-0.3	0.0	0.3	
Financial Activities	132.2	132.6	132.2	-0.4	0.0	0.4	
Finance and Insurance	97.3	96.8	97.3	0.5	0.0	-0.5	
Real Estate and Rental and Leasing	34.9	35.8	34.9	-0.9	0.0	0.9	
Professional and Business Services	321.7	327.0	321.7	-5.3	0.0	5.3	
Professional, Scientific, and Technical Services	108.9	110.5	108.9	-1.6	0.0	1.6	
Management of Companies and Enterprises	33.9	34.1	33.9	-0.2	0.0	0.2	
Admin & Support & Waste Mgmt & Remediation Services	178.9	182.4	178.9	-3.5	0.0	3.5	
Education and Health Services	472.6	472.4	472.6	0.2	0.0	-0.2	
Educational Services	75.4	72.6	75.4	2.8	0.0	-2.8	
Health Care and Social Assistance	397.2	399.8	397.2	-2.6	0.0	2.6	
Leisure and Hospitality	303.9	307.4	303.9	-3.5	0.0	3.5	
Other Services	126.2	127.6	126.2	-1.4	0.0	1.4	
Government	427.7	425.3	427.7	2.4	0.0	-2.4	

Since the low point of employment of 2,323,200 in July 2009, private sector employment growth in Indiana has surpassed the U.S. (14.3% vs. 13.3%).

Private Sector Job Growth Since the Low Point of Employment in Indiana

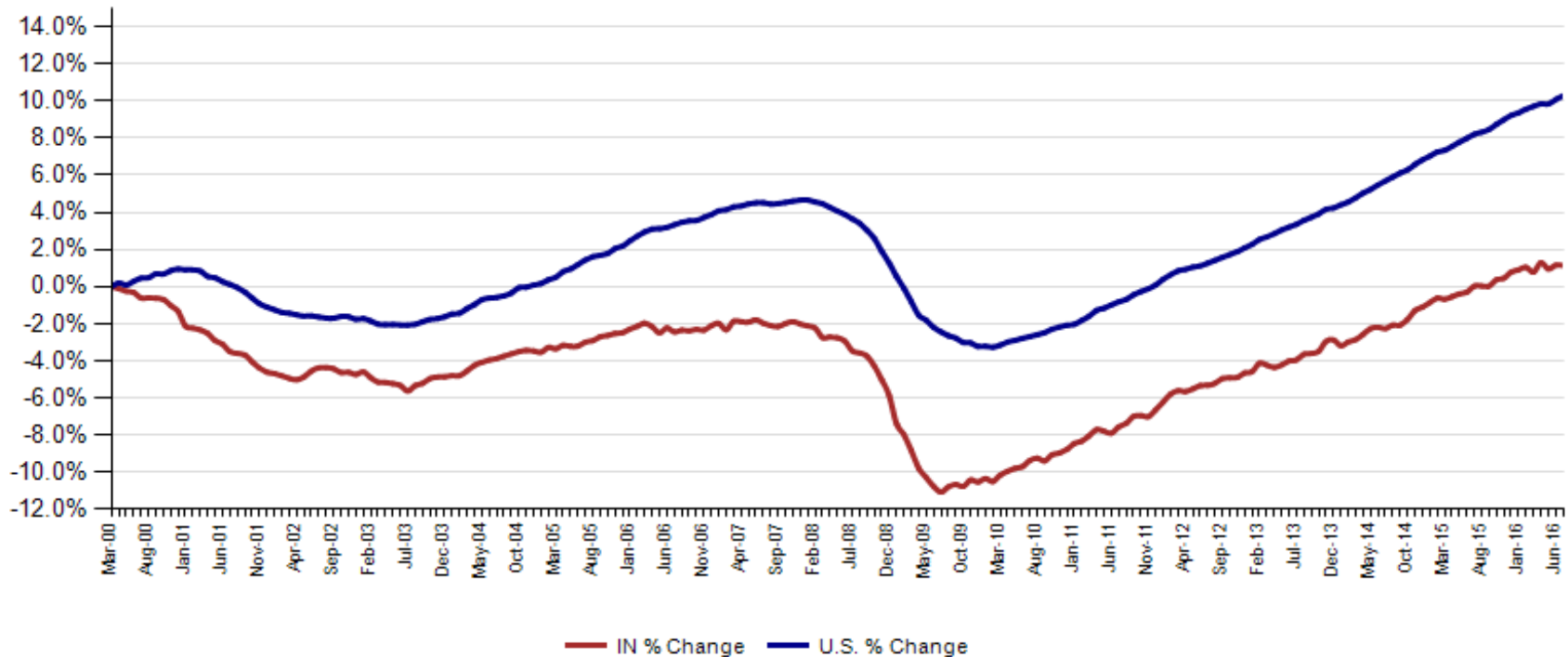


Source: Current Employment Statistics, seasonally adjusted



Since Indiana's high point of employment (March 2000), private sector employment growth in Indiana has lagged the U.S. (1.6% growth vs. 10.5% nationally).

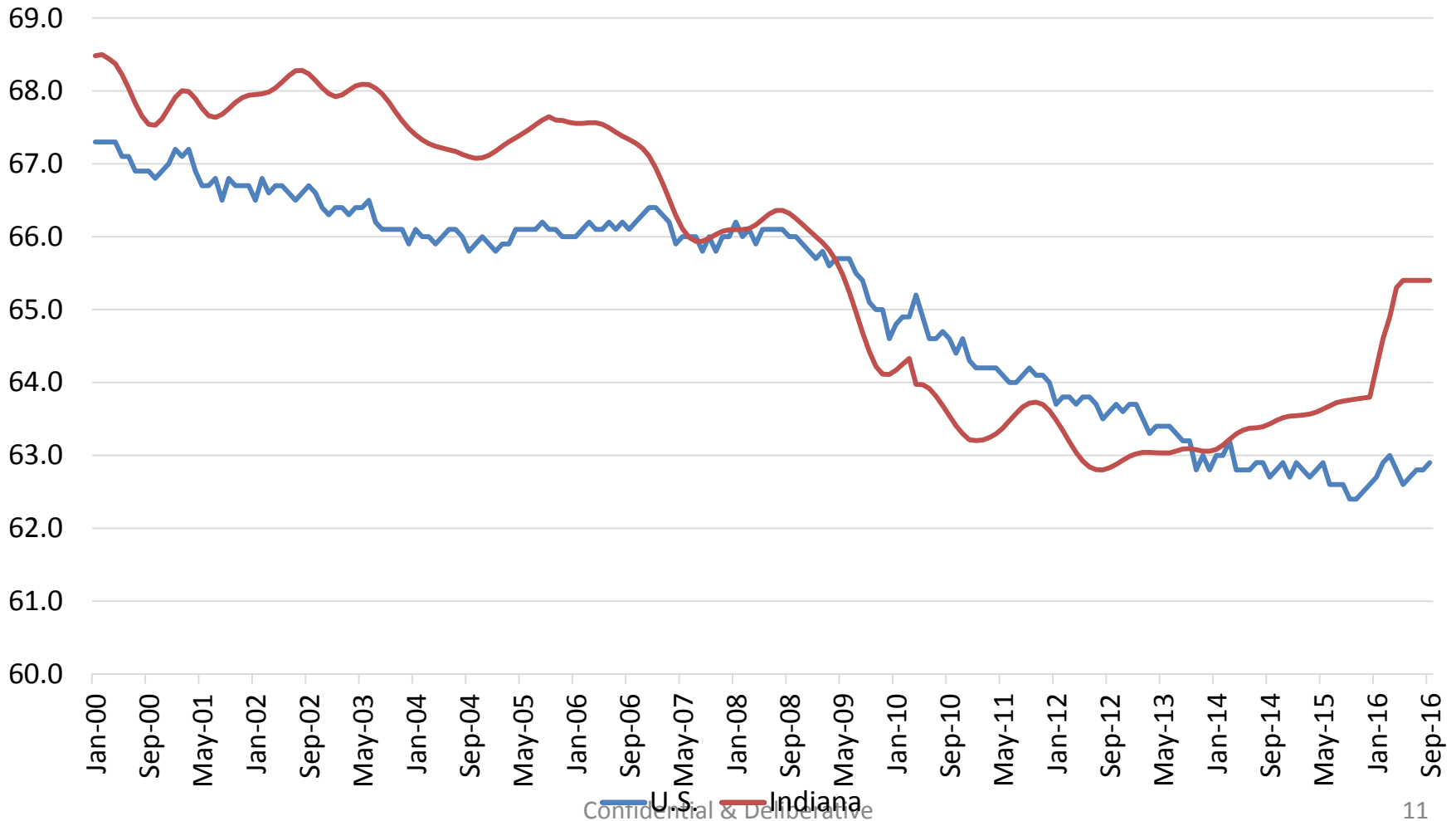
Private Sector Job Growth Since the Peak of Employment in Indiana



Source: Current Employment Statistics, seasonally adjusted



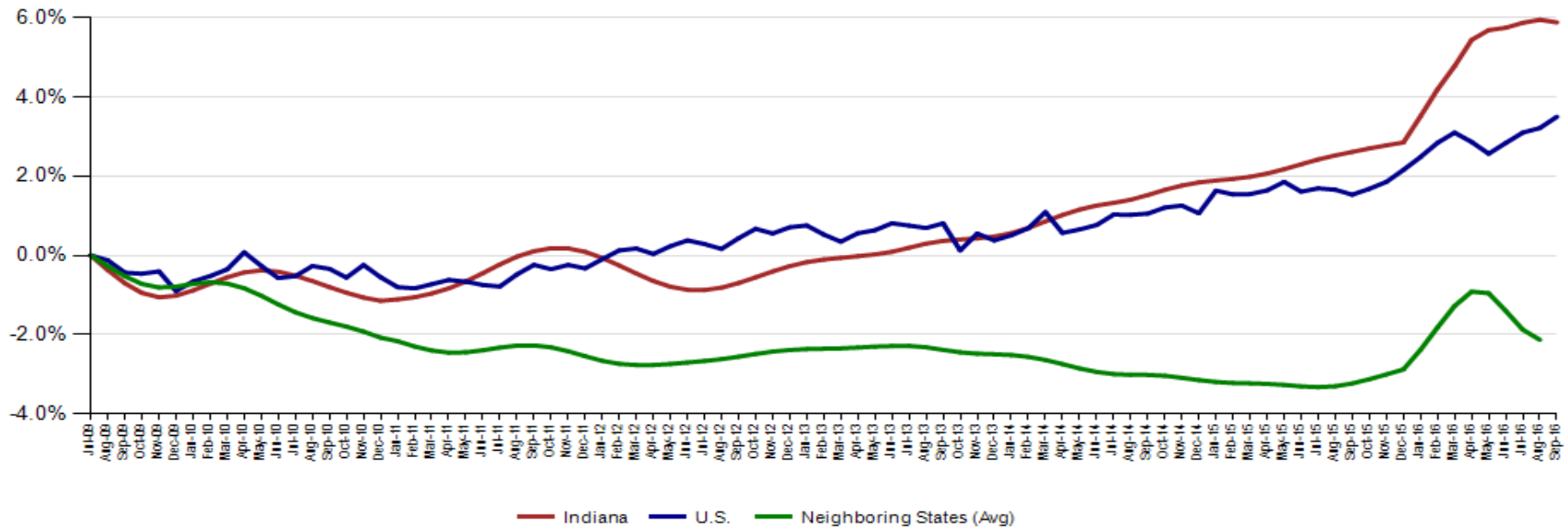
Indiana's Labor Force lost 2,144 over the month. This is the first month Labor Force has declined since July 2012. The Labor Force is at 104,214 over the year, and 192,888 since January 2013. Indiana's labor force stands at 3,376,100.





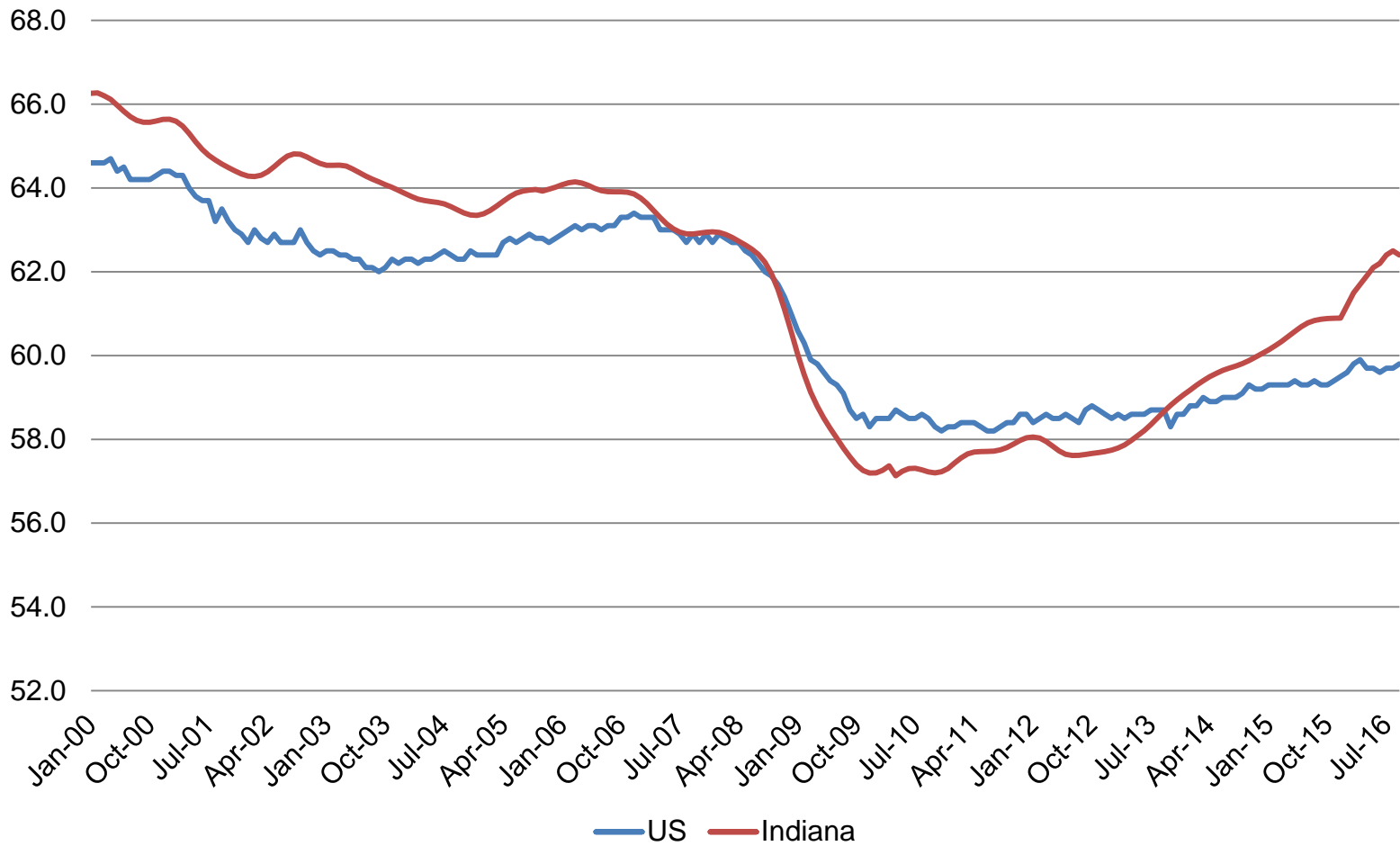
Indiana's Seasonally Adjusted Labor Force is now at 3,376,100 and the number of employed is at 3,224,697.

Labor Force Change Since July 2009 Indiana Trough (seasonally adjusted)



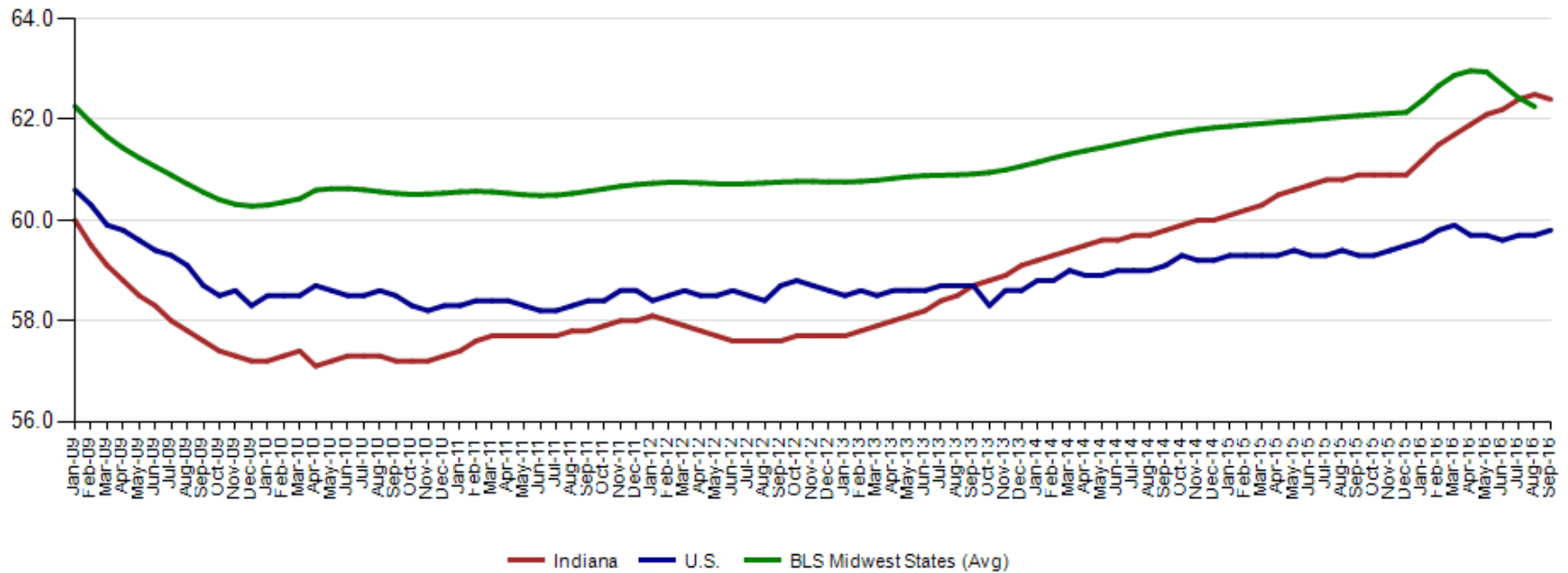


The Indiana Employment to Population Ratio stands at 62.4%.
The US Employment to Population Ratio is currently at 59.8%.



Indiana's Employment to Population rate of 62.4% has now passed the average for our BLS Regional States 62.3% (August 2016).

Employment to Population Ratio (seasonally adjusted)



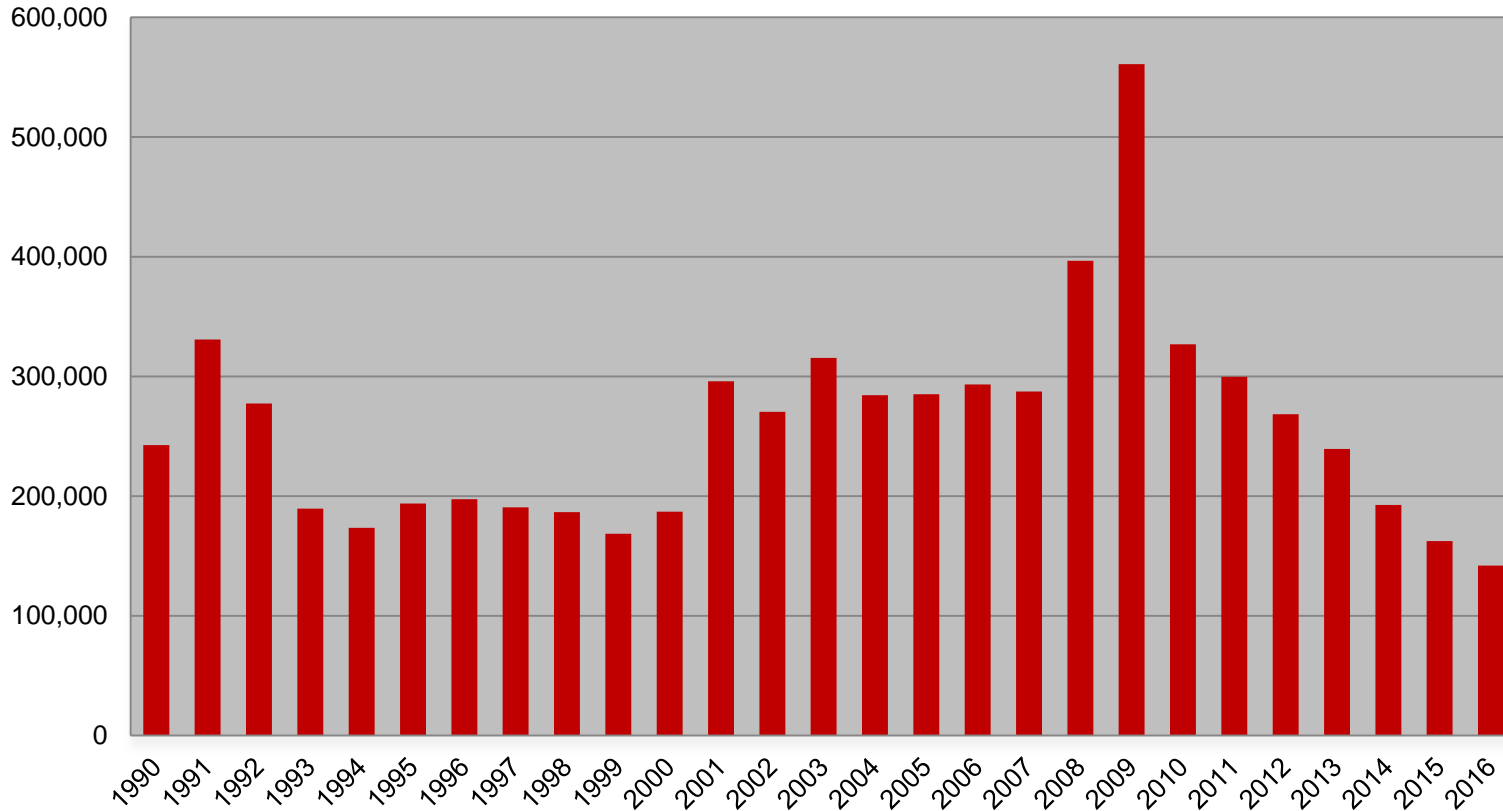


Midwest Comparison Rates: Seasonally Adjusted Over the Year and Over the Month (confidential and preliminary)

	September 2015	August 2016	September 2016	Monthly change	Yearly change
Indiana	4.5%	4.5%	4.5%	0.0%	0.0%
U.S.	5.1%	4.9%	5.0%	0.1%	-0.1%
Illinois	5.9%	5.5%		-5.5%	-5.9%
Kentucky	5.4%	4.9%	5.0%	0.1%	-0.4%
Michigan	5.1%	4.5%	4.6%	0.1%	-0.5%
Ohio	4.6%	4.7%	4.8%	0.1%	0.2%



Weekly Initial Claims – 41 weeks aggregate





Regular UI Claims – Reference Week (12th of the month) Input to LAUS Unemployment Rate Model Declines over the month - and over the year

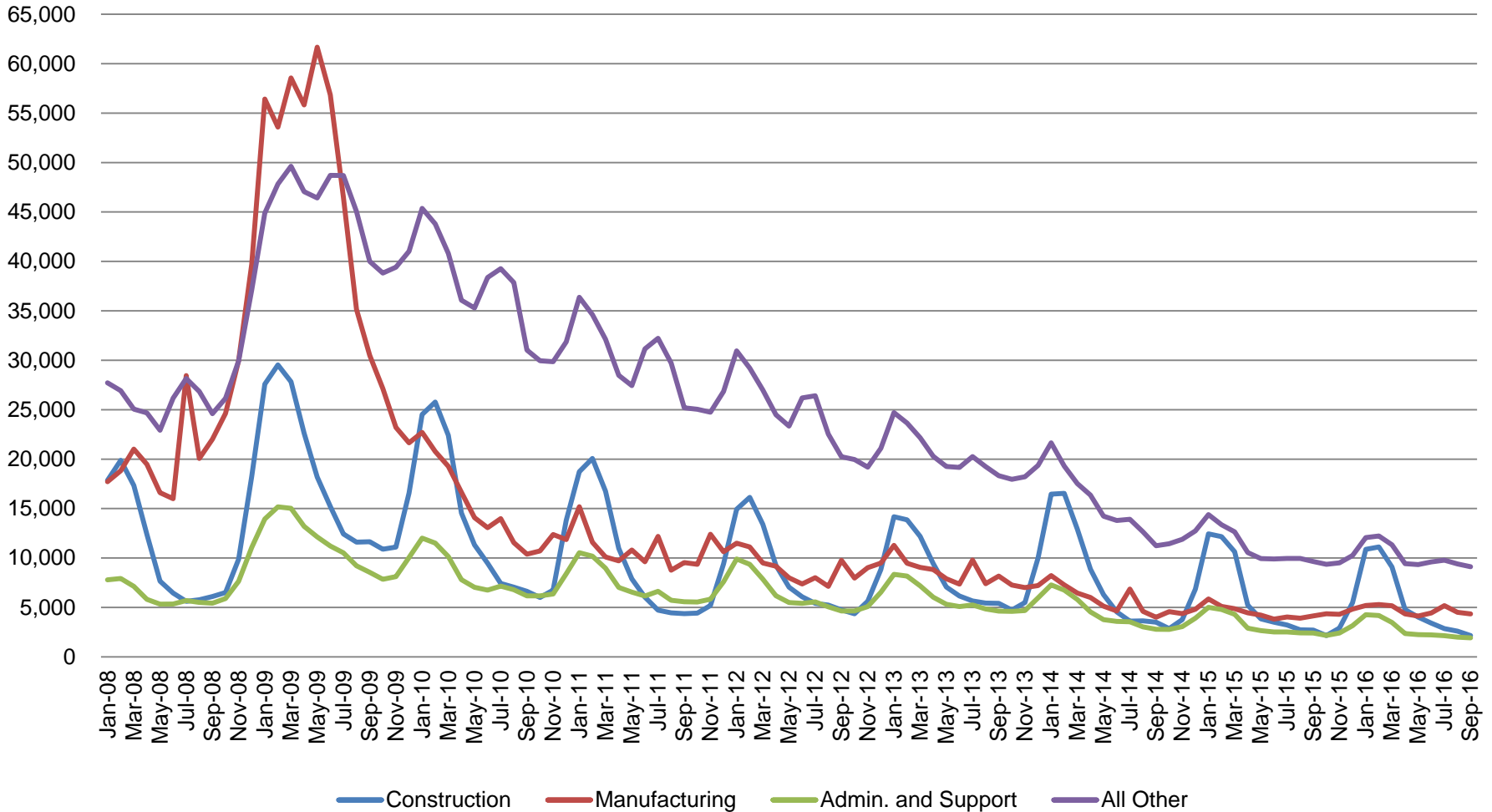
Without earnings – Reference week claims

	2006	2007	2008	2009	2010	2011	2012	2013	2014	2015	2016	OTM Change	OTY Change
JANUARY	65,898	71,296	75,294	150,888	105,910	84,706	71,042	63,223	49,377	41,333	36,555	10,306	(4,778)
FEBRUARY	67,347	75,432	78,068	154,388	103,432	80,852	69,570	60,183	52,316	39,282	36,909	354	(2,373)
MARCH	59,716	64,936	74,759	157,257	93,469	71,696	60,752	54,578	45,928	35,755	32,439	(4,470)	(3,316)
APRIL	48,103	53,325	64,948	143,842	74,481	59,036	51,652	48,548	39,717	25,597	23,895	(8,544)	(1,702)
MAY	46,779	46,002	55,480	141,174	66,779	54,680	46,328	42,997	32,460	22,807	22,300	(1,595)	(507)
JUNE	45,533	46,350	57,228	136,670	67,996	55,021	46,820	41,722	29,524	22,030	22,025	(275)	(5)
JULY	53,424	51,141	72,032	121,336	69,447	58,031	47,268	44,597	30,845	22,341	22,326	301	(15)
AUGUST	45,021	43,887	61,985	103,509	62,976	51,710	42,134	39,998	26,061	21,472	20,737	(1,589)	(735)
SEPTEMBER	41,247	42,500	61,548	92,680	58,280	46,824	41,955	39,563	23,685	20,941	19,111	(1,626)	(1,830)
OCTOBER	42,487	42,313	67,306	86,275	58,317	46,909	39,467	37,778	23,768	19,917			
NOVEMBER	43,868	45,362	81,466	82,451	58,846	51,201	41,018	38,517	25,315	21,199			
DECEMBER	53,566	54,201	109,651	91,814	65,279	55,104	46,371	42,484	30,982	26,249			



Regular UI Claims by Industry

For the Reference Week of Each Month

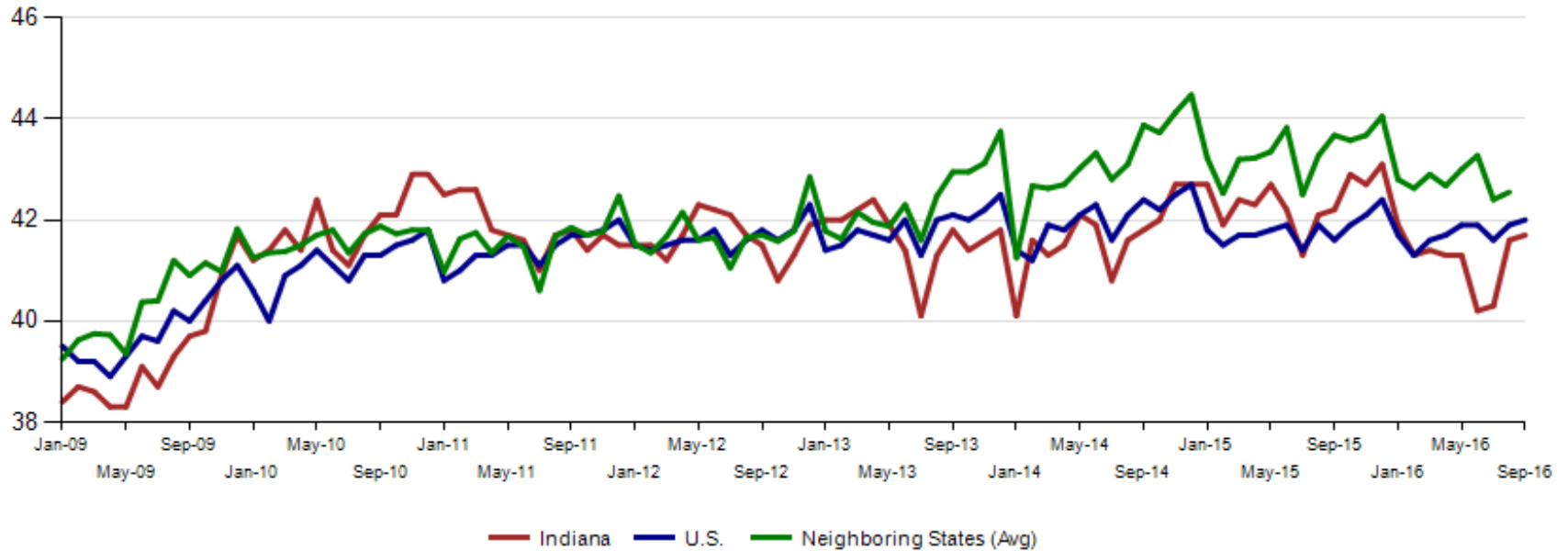


Source: ETA 203



Average weekly hours for Indiana manufacturing rose by 0.1 hours to 41.7 in September 2016. Nationally, manufacturing weekly hours increased to 42.0. This is the seventh month in a row that the National average weekly hours was higher than Indiana.

Avg. Weekly Manufacturing Production Hours (non seasonally adjusted)





Internal Indiana Career Connect job orders are 63,530 in September. Health Care & Social Services, Retail Trade and Administrative & Support & Waste Management & Remediation Services (this includes temp help services) as usual lead the way.

NAICS_title	Sep-2016	Prior Year			Current Year			Change over Prior Year			Current Year Including External		
	July	August	September	July	August	September	July	August	September	July	August	September	
Total	6,616	7,394	8,115	10,144	10,109	8,637	53%	37%	6%	62,692	65,770	63,530	
Health Care and Social Services	1,405	1,465	1,615	2,353	2,118	1,681	67%	45%	4%	11,046	14,563	10,303	
Retail Trade	601	708	729	835	911	721	39%	29%	-1%	11,252	9,331	9,586	
Admin. & Support & Waste Mgt. & Rem. Services	833	955	915	1,032	1,244	1,261	24%	30%	38%	7,620	8,143	8,529	
Transportation & Warehousing	347	359	391	511	440	425	47%	23%	9%	5,115	4,701	7,760	
Accommodation and Food Services	172	179	142	619	654	292	260%	265%	106%	6,017	4,673	5,001	
Manufacturing	1,058	1,254	1,734	1,647	1,698	1,543	56%	35%	-11%	4,314	4,958	4,448	
Professional, Scientific, and Technical Services	435	579	672	681	698	680	57%	21%	1%	3,398	3,723	3,496	
Educational Services	171	135	129	752	663	611	340%	391%	374%	3,198	3,210	2,787	
Finance and Insurance	236	358	232	249	270	206	6%	-25%	-11%	2,902	2,952	2,478	
Wholesale Trade	442	434	467	377	390	322	-15%	-10%	-31%	2,255	2,574	2,262	
Information	224	167	298	383	275	235	71%	65%	-21%	1,568	1,629	1,505	
Other Services(Except Public Administration)	157	216	183	170	171	168	8%	-21%	-8%	1,037	1,247	1,355	
Real Estate and Rental and Leasing	59	70	115	107	102	97	81%	46%	-16%	956	1,126	1,347	
Public Administration	150	153	186	143	153	106	-5%	0%	-43%	557	993	914	
Management of Companies and Enterprises	12	16	14	20	10	11	67%	-38%	-21%	810	844	755	
Construction	176	212	157	124	147	128	-30%	-31%	-18%	303	572	513	
Utilities	74	64	65	72	102	107	-3%	59%	65%	154	265	219	
Arts, Entertainment, and Recreation	33	31	32	25	23	20	-24%	-26%	-38%	92	155	197	
Agriculture, Forestry, Fishing and Hunting	19	23	16	15	18	11	-21%	-22%	-31%	43	59	39	
Mining	2	9	13	20	18	10	900%	100%	-23%	46	48	34	
Unallocated	10	7	10	9	4	2	-10%	-43%	-80%	9	4	2	



Soft Skills

Wall Street Journal August 30, 2016: "The job market's most sought-after skills can be tough to spot on a résumé. Companies across the U.S. say it is becoming increasingly difficult to find applicants who can communicate clearly, take initiative, problem-solve and get along with co-workers. Those traits, often called soft skills, can make the difference between a standout employee and one who just gets by."

FIGURE 1.

Occupational Skill Requirements, 1980–2012

Social and service job tasks have increased while math-related job tasks have tapered off and routine job tasks have decreased.

