



INDIANA
WORKFORCE
DEVELOPMENT
AND ITS **WorkOne** CENTERS

Indiana's Employment and Labor Force Estimates September 2015



Key Points

- September 2015 preliminary BLS employment estimates for Indiana show private employment gains of 6,600 over the month. Private sector employment for Indiana now stands at 2,621,800 a new peak level 9,200 above the prior private sector peak in March of 2000.
- August total private estimates remained unchanged, and the losses from July to August were 5,500 over the month.
- Private educational and health services gained 3,000, leisure and hospitality gained 2,900, and construction grew by 1,700. Manufacturing also gained 500 over the month, and is up 10,800 over the year.
- Professional and business services (-1,900) and trade, transportation and utilities (-500).
- Total Nonfarm employment declined by 4,100 in September, as public employment declined by 10,700. This includes public schools and hospitals, and was likely driven by volatility in tracking when schools are back in session. This sector gained more than 11,000 in August.
- Average weekly hours for Indiana manufacturing workers declined by 0.1 to 42.0 in September. Nationally, average weekly hours declined by 0.5 to 41.4.
- The unemployment rate in Indiana declined from 4.6% to 4.5% in September, the last time the rate was this low was July of 2007.



Key Points

LAUS Household Survey:

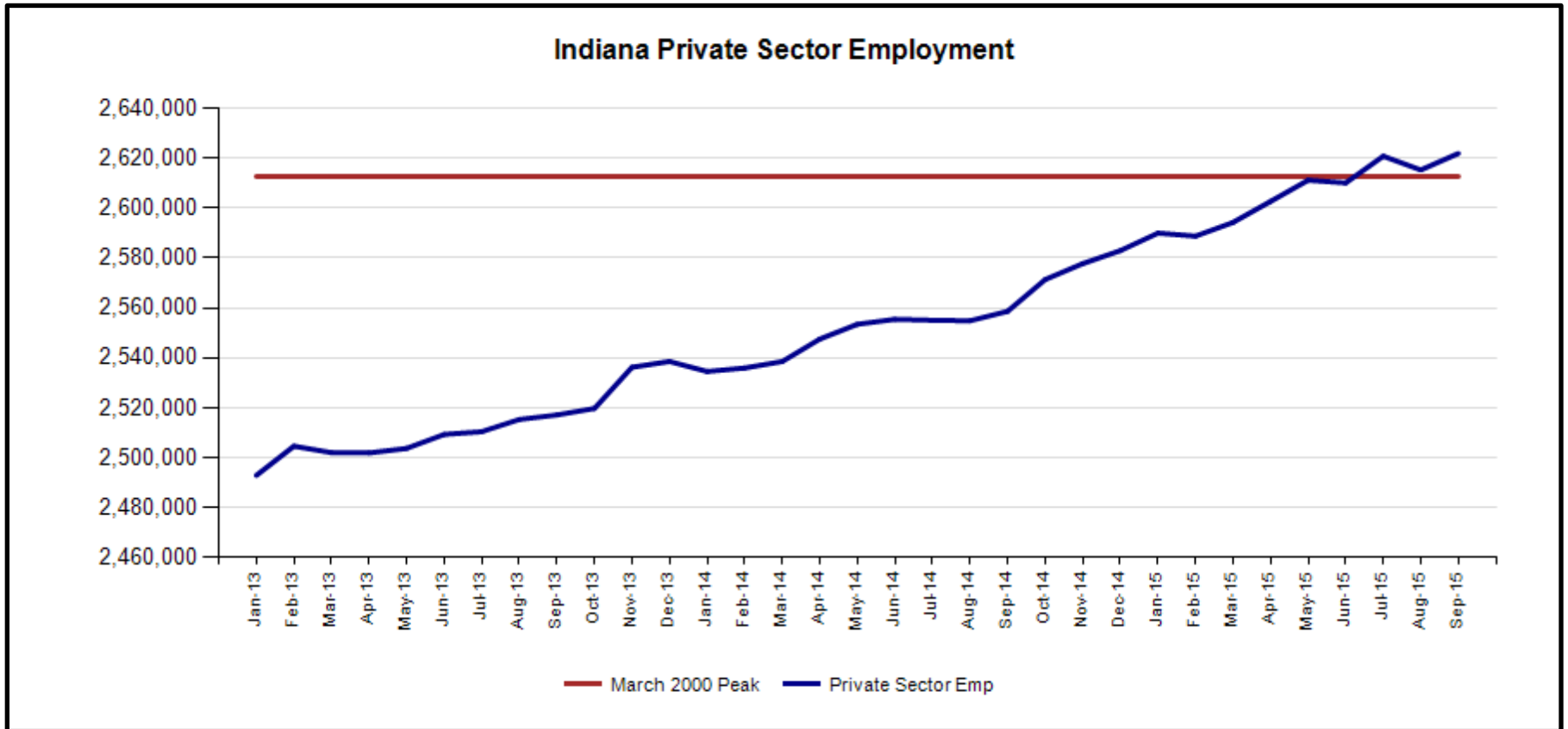
- Indiana's rate of 4.5% in September is down (-1.3%) from September 2014. The national rate was unchanged at 5.1% in September.
- Indiana's LAUS employment estimates rose by 5,310, and unemployment declined by 3,761; this led to a slight increase of 1,549 in the labor force for September. Indiana's labor force participation rate declined by 0.1% to stand at 63.5% (an insignificant monthly change, also attributed to population gains). This remains above the US labor force participation rate which also declined in September, and stands at 62.4%.
- Indiana's labor force is up 23,699 over the year, and has gained approximately 84,000 since January 2013.

CES Payroll/ Establishment Survey:

- Indiana's private sector employment increased by 6,600 (0.3%) in September, and is up 63,200 from a year ago (2.5%). US private employment grew by 118,000 over the month, a rate of (0.1%). Nationally, private sector employment is up by 2.2% over the year.
- Since January 2013 Indiana private employment has grown by 128,900 (5.2%).
- Average hourly earnings for all private employees in Indiana were \$22.90 in September, a decrease of \$0.06 from September, and an increase of \$0.46 cents from last year. Nationally in September, average hourly earnings for all employees on private nonfarm payrolls were \$25.03, an increase of \$0.53 from last year.



Total nonfarm employment surpassed March 2000 peak levels in July of 2015 and continued to rise above the previous peak in September. Private employment now also stands 9,200 above prior peak. Indiana's new private sector peak based on preliminary September numbers now stands at 2,621,800.





August Total Private preliminary estimates remained unchanged, and the losses from July to August were 5,500 over the month.

Revisions to August 2015 Estimates

INDUSTRY TITLE	July	August Prel	August Rev	Revision	Chg from July	Prel Chg from July
Total Nonfarm	3050.3	3057.0	3056.3	-0.7	6.0	6.7
Total Private	2620.7	2615.2	2615.2	0.0	-5.5	-5.5
Construction	118.0	119.3	119.3	0.0	1.3	1.3
Manufacturing	519.7	520.0	519.9	-0.1	0.2	0.3
Trade, Transportation, and Utilities	599.8	598.9	599.5	0.6	-0.3	-0.9
Wholesale Trade	121.9	122.7	122.7	0.0	0.8	0.8
Retail Trade	329.4	329.8	330.6	0.8	1.2	0.4
Transportation, Warehousing, and Utilities	148.5	146.4	146.2	-0.2	-2.3	-2.1
Information	35.3	34.8	35.0	0.2	-0.3	-0.5
Financial Activities	129.7	129.2	129.7	0.5	0.0	-0.5
Professional and Business Services	330.9	326.0	327.2	1.2	-3.7	-4.9
Professional, Scientific, and Technical Services	110.9	110.8	110.4	-0.4	-0.5	-0.1
Management of Companies and Enterprises	33.7	34.1	33.9	-0.2	0.2	0.4
Admin & Support & Waste Mgmt & Remediation Services	186.3	181.1	182.9	1.8	-3.4	-5.2
Education and Health Services	452.0	451.1	451.3	0.2	-0.7	-0.9
Educational Services	64.2	63.5	63.4	-0.1	-0.8	-0.7
Health Care and Social Assistance	387.8	387.6	387.9	0.3	0.1	-0.2
Leisure and Hospitality	301.2	303.9	301.2	-2.7	0.0	2.7
Arts, Entertainment, and Recreation	39.2	38.5	38.0	-0.5	-1.2	-0.7
Accommodation and Food Services	262.0	265.4	263.2	-2.2	1.2	3.4
Government	429.6	441.8	441.1	-0.7	11.5	12.2



IN Employment Change Over the Month, Year-to-Date and Over the Year (seasonally adjusted)

Industry	September 2014	December 2014	August 2015	September 2015	Month Change	Y-to-D Change	Y-to-Y Change
Private Educational & Health Services	439.4	441.5	451.3	454.3	3.0	12.8	14.9
.....Private Educational Services	64.1	65.5	63.4	65.1	1.7	-0.4	1.0
.....Health Care & Social Assistance	375.3	376.0	387.9	389.2	1.3	13.2	13.9
Manufacturing	509.6	514.6	519.9	520.4	0.5	5.8	10.8
Professional & Business Services	319.4	328.2	327.2	325.3	-1.9	-2.9	5.9
Financial Activities	128.5	130.9	129.7	129.5	-0.2	-1.4	1.0
Construction	122.5	122.9	119.3	121.0	1.7	-1.9	-1.5
Leisure and Hospitality	293.9	295.0	301.2	304.1	2.9	9.1	10.2
Trade, Transportation & Utilities	576.3	581.5	599.5	599.0	-0.5	17.5	22.7
.....Trade	437.7	440.1	453.3	453.0	-0.3	12.9	15.3
.....Transportation, Warehousing & Utilities	138.6	141.4	146.2	146.0	-0.2	4.6	7.4
All Other	169.0	168.3	167.1	168.2	1.1	-0.1	-0.8
					0.0	0.0	0.0
Total Private	2,558.6	2,582.9	2,615.2	2,621.8	6.6	38.9	63.2
Government (Includes Public Schools & Hospitals)	427.7	429.2	441.1	430.4	-10.7	1.2	2.7
Total Nonfarm	2,986.3	3,012.1	3,056.3	3,052.2	-4.1	40.1	65.9
					0.0	0.0	0.0
United States Total Private	117,739.0	118,690.0	120,224.0	120,342.0	118.0	1,652.0	2,603.0



IN Statewide Estimates (seasonally adjusted) -- September 2015

Supersector	Private Empl. Peak March 2000	Private Empl. Trough July 2009	August 2015	September 2015	Change Since Peak	Change Since Trough	Month to Month Change
Private Educational & Health Services	330.1	411.1	451.3	454.3	124.2	43.2	3.0
.....Private Educational Services	52.2	63.3	63.4	65.1	12.9	1.8	1.7
.....Health Care & Social Assistance	277.9	347.8	387.9	389.2	111.3	41.4	1.3
Manufacturing	671.1	427.9	519.9	520.4	-150.7	92.5	0.5
Professional & Business Services	260.5	255.9	327.2	325.3	64.8	69.4	-1.9
Financial Activities	145.7	130.7	129.7	129.5	-16.2	-1.2	-0.2
Construction	154.1	116.5	119.3	121.0	-33.1	4.5	1.7
Leisure and Hospitality	267.2	276.8	301.2	304.1	36.9	27.3	2.9
Trade, Transportation & Utilities	617.5	545.7	599.5	599.0	-18.5	53.3	-0.5
.....Trade	485.1	421.6	453.3	453.0	-32.1	31.4	-0.3
.....Transportation, Warehousing & Utilities	132.4	124.1	146.2	146.0	13.6	21.9	-0.2
All Other	166.4	158.6	167.1	168.2	1.8	9.6	1.1
Total Private	2,612.6	2,323.2	2,615.2	2,621.8	9.2	298.6	6.6
Government (Includes Public Schools & Hospitals)	404.6	434.5	441.1	430.4	25.8	-4.1	-10.7
Total Nonfarm	3,017.2	2,757.7	3,056.3	3,052.2	35.0	294.5	-4.1
United States Total Private	110,873.0	108,098.0	120,224.0	120,342.0	9,469.0	12,244.0	118.0



IN Statewide Estimates (seasonally adjusted) -- September 2015

Supersector	Private Empl. Peak March 2000	Private Empl. Trough July 2009	August 2015	September 2015	% Chg. Since Peak	% Chg. Since Trough	% Month to Month Change
Private Educational & Health Services	330.1	411.1	451.3	454.3	37.6%	10.5%	0.7%
..... <i>Private Educational Services</i>	52.2	63.3	63.4	65.1	24.7%	2.8%	2.7%
..... <i>Health Care & Social Assistance</i>	277.9	347.8	387.9	389.2	40.1%	11.9%	0.3%
Manufacturing	671.1	427.9	519.9	520.4	-22.5%	21.6%	0.1%
Professional & Business Services	260.5	255.9	327.2	325.3	24.9%	27.1%	-0.6%
Financial Activities	145.7	130.7	129.7	129.5	-11.1%	-0.9%	-0.2%
Construction	154.1	116.5	119.3	121.0	-21.5%	3.9%	1.4%
Leisure and Hospitality	267.2	276.8	301.2	304.1	13.8%	9.9%	1.0%
Trade, Transportation & Utilities	617.5	545.7	599.5	599.0	-3.0%	9.8%	-0.1%
..... <i>Trade</i>	485.1	421.6	453.3	453.0	-6.6%	7.4%	-0.1%
..... <i>Transportation, Warehousing & Utilities</i>	132.4	124.1	146.2	146.0	10.3%	17.6%	-0.1%
All Other	166.4	158.6	167.1	168.2	1.1%	6.1%	0.7%
Total Private	2,612.6	2,323.2	2,615.2	2,621.8	0.4%	12.9%	0.3%
Government (Includes Public Schools & Hospitals)	404.6	434.5	441.1	430.4	6.4%	-0.9%	-2.4%
Total Nonfarm	3,017.2	2,757.7	3,056.3	3,052.2	1.2%	10.7%	-0.1%
United States Total Private	110,873.0	108,098.0	120,224.0	120,342.0	8.5%	11.3%	0.1%



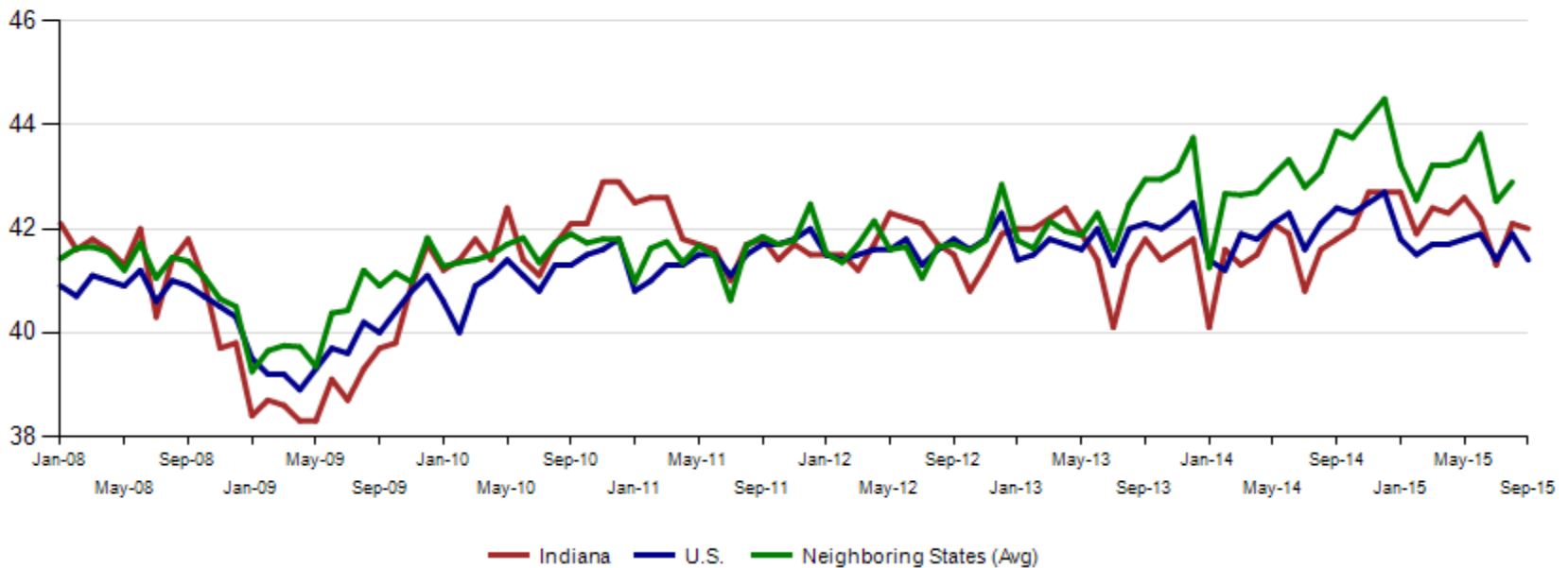
IN Employment Change Compared to the U.S.

Industry	Indiana Month to Month	U.S. Month to Month	Indiana vs U.S. Change	Indiana Year-to-Date	U.S. Year-to-Date	Indiana vs U.S. Change	Indiana Year-to-Year	U.S. Year-to-Year	Indiana vs U.S. Change
Private Educational & Health Services	0.7%	0.1%	OVER	2.9%	2.0%	OVER	3.4%	2.6%	OVER
.....Private Educational Services	2.7%	-0.2%	OVER	-0.6%	0.3%	UNDER	1.6%	0.2%	OVER
.....Health Care & Social Assistance	0.3%	0.2%	OVER	3.5%	2.3%	OVER	3.7%	3.1%	OVER
Manufacturing	0.1%	-0.1%	OVER	1.1%	0.1%	OVER	2.1%	0.9%	OVER
Professional & Business Services	-0.6%	0.2%	UNDER	-0.9%	2.1%	UNDER	1.8%	3.2%	UNDER
Financial Activities	-0.2%	0.0%	UNDER	-1.1%	1.3%	UNDER	0.8%	1.8%	UNDER
Construction	1.4%	0.1%	OVER	-1.5%	1.9%	UNDER	-1.2%	3.3%	UNDER
Leisure and Hospitality	1.0%	0.2%	OVER	3.1%	1.8%	OVER	3.5%	2.9%	OVER
Trade, Transportation & Utilities	-0.1%	0.1%	UNDER	3.0%	1.3%	OVER	3.9%	2.0%	OVER
.....Trade	-0.1%	0.1%	UNDER	2.9%	1.3%	OVER	3.5%	1.8%	OVER
.....Transportation, Warehousing & Utils	-0.1%	0.1%	UNDER	3.3%	1.2%	OVER	5.3%	2.9%	OVER
All Other	0.7%	0.0%	OVER	-0.1%	-0.4%	OVER	-0.5%	0.0%	UNDER
Total Private	0.3%	0.1%	OVER	1.5%	1.4%	OVER	2.5%	2.2%	OVER
Government (Includes Public Schools & Hospitals)	-2.4%	0.1%	UNDER	0.3%	0.6%	UNDER	0.6%	0.7%	UNDER
Total Nonfarm	-0.1%	0.1%	UNDER	1.3%	1.3%	OVER	2.2%	2.0%	OVER



Average weekly hours for Indiana manufacturing workers decreased slightly by 0.1 from 42.1 to 42.0 in September. Nationally, average weekly hours also decreased 41.9 to 41.4. Hours above 42.0 weekly are considered a positive economic indicator.

Avg. Weekly Manufacturing Production Hours (non seasonally adjusted)

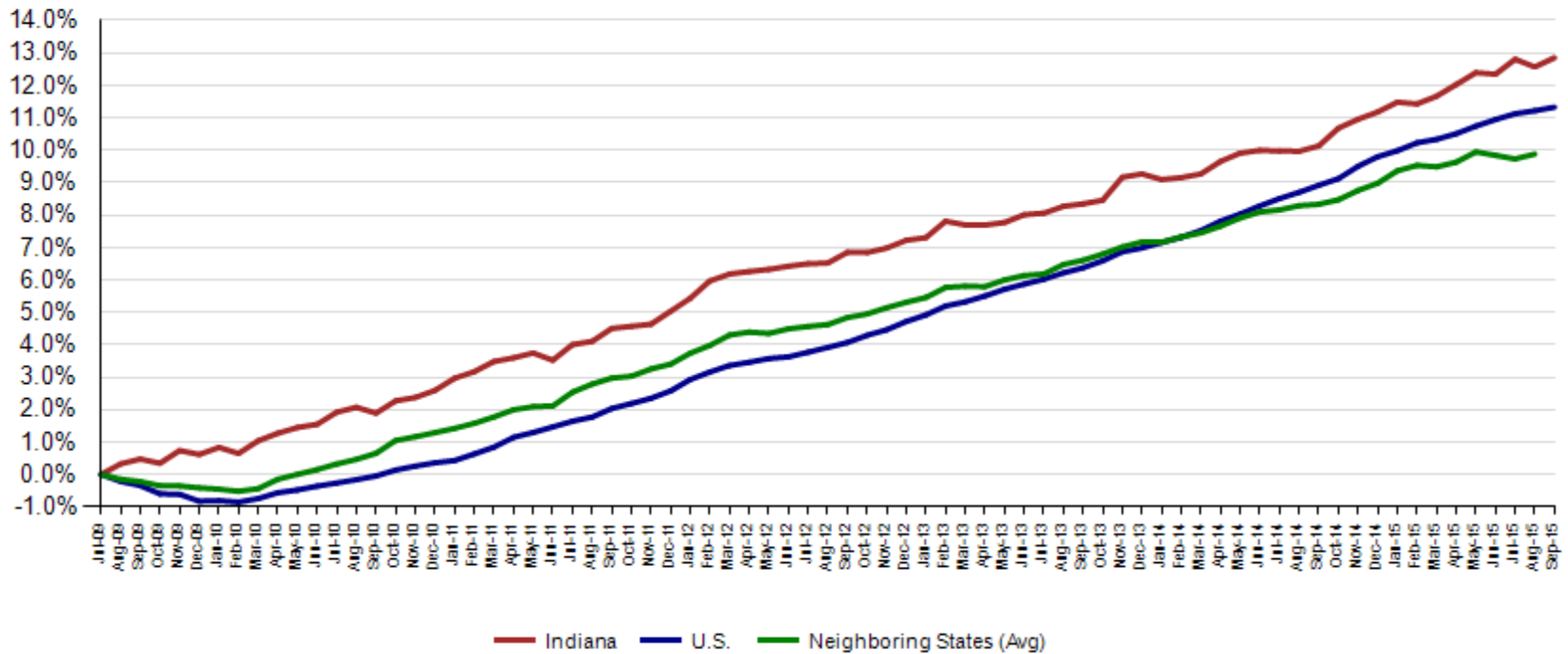


Source: Current Employment Statistics, not seasonally adjusted



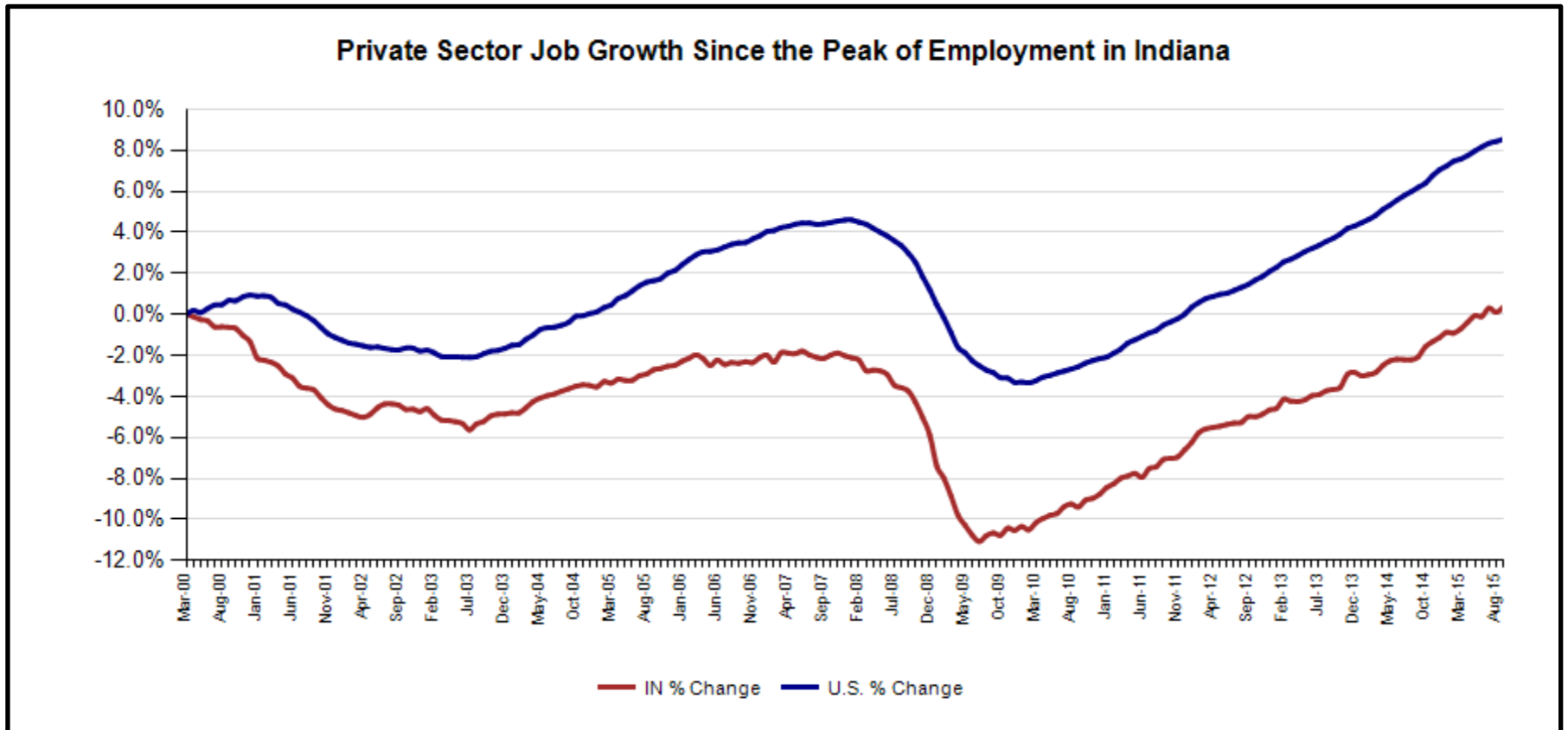
Since the low point of employment (July 2009), private sector employment growth in Indiana has surpassed the U.S. (12.9% vs. 11.3%).

Private Sector Job Growth Since the Low Point of Employment in Indiana





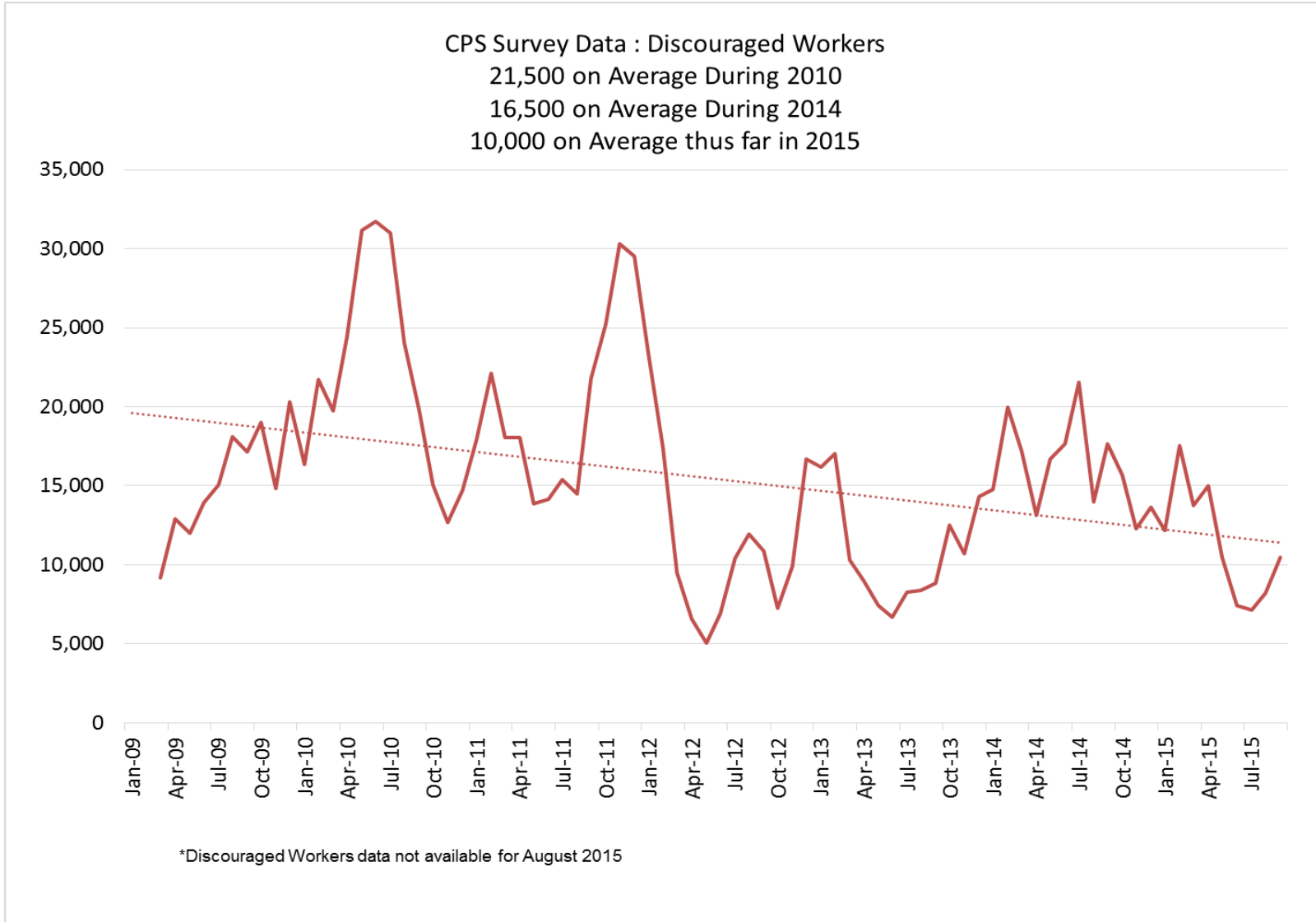
Since Indiana's prior high point of employment (March 2000), private sector employment growth in Indiana has lagged the U.S. (0.4% vs. 8.5%).



Source: Current Employment Statistics, seasonally adjusted

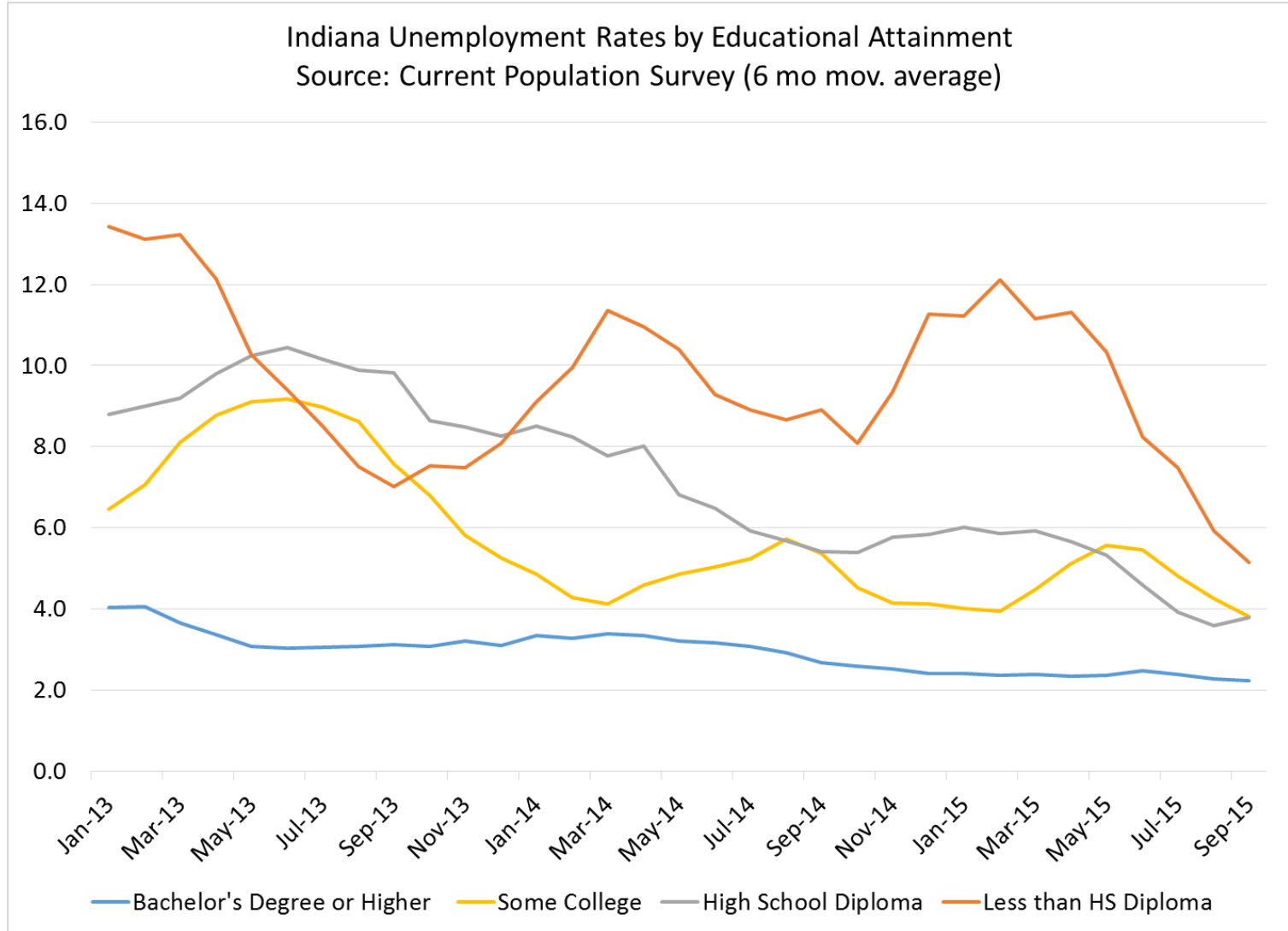


CPS Estimates of Discouraged workers, down 50% on average from 2010 in Indiana.
Nationally these estimates are declining at a slightly slower pace, down 40% overall.





Falling from nearly 14% rate of unemployment for those without a HS Diploma, the rate for Hoosiers with less than a HS Degree is now nearing 5%.





**MSA Estimates:
2000 And Over-the-Year Change
Ranked on percentage change over-the-year (no seasonal adjustment)**

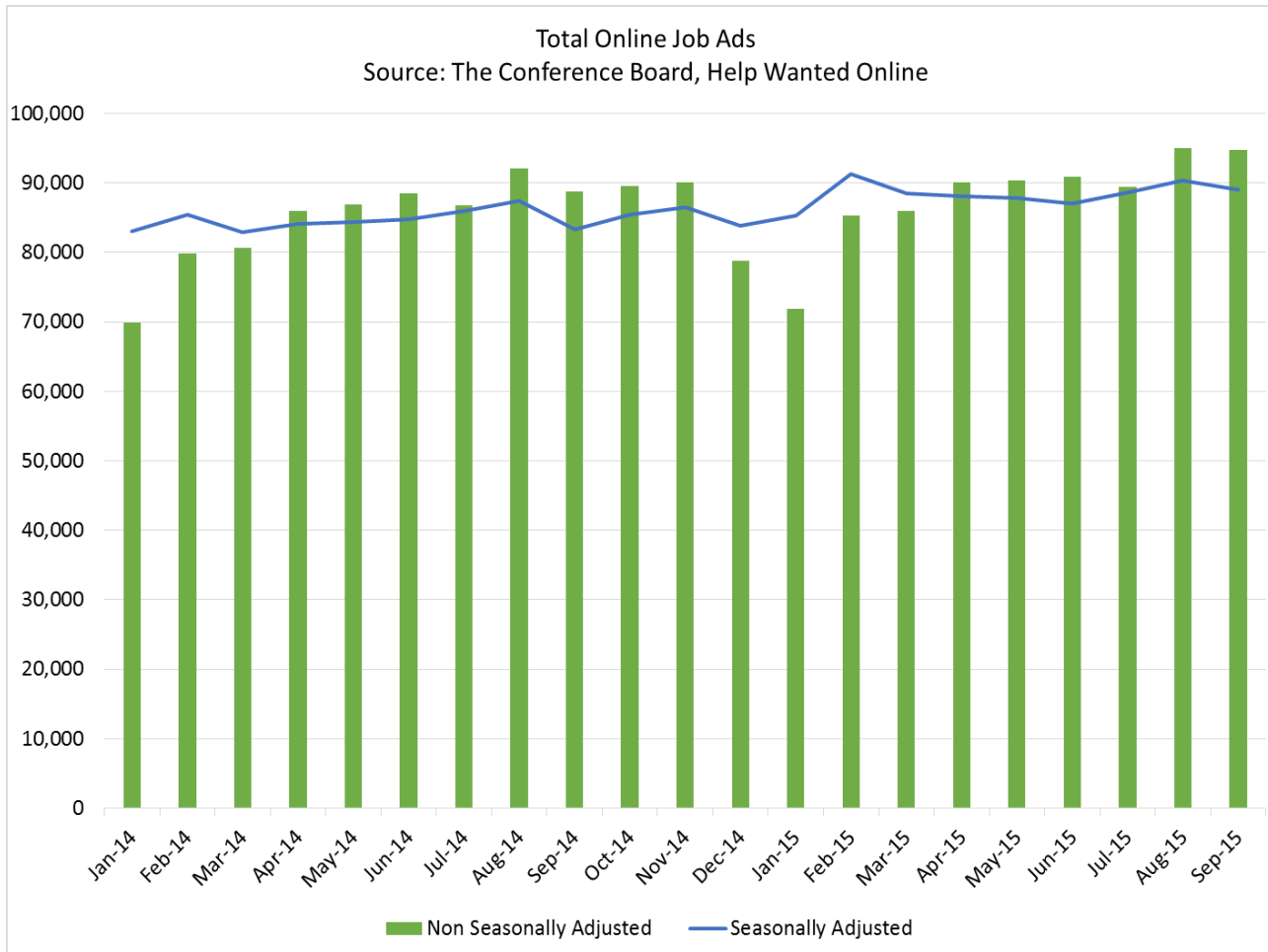
IN Metropolitan Area Employment Estimates

MSA	September 2000	September 2014	August 2015	September 2015	September 2015 Change	Change since 2000	% Chg since 2000	Annual Change	Annual % Change
Columbus	44,900	50,900	52,800	53,000	200	8,100	18.0%	2,100	4.1%
Elkhart-Goshen	127,200	124,600	130,100	129,100	-1,000	1,900	1.5%	4,500	3.6%
Kokomo	49,900	40,400	41,500	41,700	200	-8,200	-16.4%	1,300	3.2%
Indianapolis-Carmel-Anderson	906,300	1,003,500	1,032,800	1,031,600	-1,200	125,300	13.8%	28,100	2.8%
Evansville	160,900	157,000	159,500	160,900	1,400	0	0.0%	3,900	2.5%
Lafayette-West Lafayette	97,300	101,100	98,500	103,400	4,900	6,100	6.3%	2,300	2.3%
South Bend	151,900	137,000	135,000	138,500	3,500	-13,400	-8.8%	1,500	1.1%
Gary Division	283,300	275,200	275,400	278,100	2,700	-5,200	-1.8%	2,900	1.1%
Muncie	58,700	51,500	49,900	52,000	2,100	-6,700	-11.4%	500	1.0%
Fort Wayne	221,300	215,100	215,800	216,800	1,000	-4,500	-2.0%	1,700	0.8%
Terre Haute	78,200	70,400	69,400	70,300	900	-7,900	-10.1%	-100	-0.1%
Michigan City	50,300	42,200	42,000	42,100	100	-8,200	-16.3%	-100	-0.2%
Bloomington	74,600	77,300	70,700	74,200	3,500	-400	-0.5%	-3,100	-4.0%



Employers posted approximately 89,039 total online job ads in Indiana during September, this was down slightly over the month from 90,368 in August of 2015.

This is an increase of 5,691 over the year from September of 2014. Job Ads have shown steady increases over the last few years.



Source: seasonally adjusted data according to the Conference Board's Help Wanted Online (HWOL) Data Series.



The September Supply/Demand rate for Indiana declined to 1.7 unemployed for every job ad. This is down 0.4 over the year and just slightly higher than the national average of 1.6 per job ad. This is down significantly since the peak of over 8 unemployed persons per online job ad during the summer of 2009. As more employers are now posting online for potential job vacancies than prior to the recession, it is hard to look back historically for a longer term comparison.

