



INDIANA  
**WORKFORCE**  
DEVELOPMENT  
AND ITS **WorkOne** CENTERS

# Indiana's Employment and Labor Force Estimates September 2014

*Release Date : October 21st*



## Indiana Employment Change Over the Month, Year-to-Date and Over the Year, S.A.

Industry	September 2013	December 2013	August 2014	September 2014	Month Change	Y-to-D Change	Y-to-Y Change
Private Educational & Health Services	440.4	443.0	442.6	443.0	0.4	0.0	2.6
.....Private Educational Services	66.9	70.5	70.7	71.5	0.8	1.0	4.6
.....Health Care & Social Assistance	373.5	372.5	371.9	371.5	-0.4	-1.0	-2.0
Manufacturing	492.6	497.7	512.3	518.2	5.9	20.5	25.6
Professional & Business Services	309.0	316.1	318.1	316.8	-1.3	0.7	7.8
Financial Activities	129.6	130.4	130.6	130.6	0.0	0.2	1.0
Construction	120.7	125.0	128.6	127.7	-0.9	2.7	7.0
Leisure and Hospitality	290.8	294.0	299.2	295.4	-3.8	1.4	4.6
Trade, Transportation & Utilities	570.6	573.6	573.8	571.8	-2.0	-1.8	1.2
.....Trade	434.8	437.3	435.5	435.9	0.4	-1.4	1.1
.....Transportation, Warehousing & Utilities	135.8	136.3	138.3	135.9	-2.4	-0.4	0.1
All Other	161.6	163.1	165.9	165.7	-0.2	2.6	4.1
<b>Total Private</b>	<b>2,515.3</b>	<b>2,542.9</b>	<b>2,571.1</b>	<b>2,569.2</b>	<b>-1.9</b>	<b>26.3</b>	<b>53.9</b>
Government (Includes Public Schools & Hospitals)	419.1	422.3	428.5	424.8	-3.7	2.5	5.7
<b>Total Nonfarm</b>	<b>2,934.4</b>	<b>2,965.2</b>	<b>2,999.6</b>	<b>2,994.0</b>	<b>-5.6</b>	<b>28.8</b>	<b>59.6</b>
<b>United States Total Private</b>	<b>114,936.0</b>	<b>115,541.0</b>	<b>117,288.0</b>	<b>117,524.0</b>	<b>236.0</b>	<b>1,983.0</b>	<b>2,588.0</b>

Source: Current Employment Statistics, seasonally adjusted



## Indiana Statewide Seasonally Adjusted Estimates -- September 2014

Supersector	Private Empl. Peak March 2000	Private Empl. Trough July 2009	August 2014	September 2014	Change Since Peak	Change Since Trough	Month to Month Change
Private Educational & Health Services	330.1	415.3	442.6	443.0	112.9	27.7	0.4
.....Private Educational Services	52.2	67.5	70.7	71.5	19.3	4.0	0.8
.....Health Care & Social Assistance	277.9	347.8	371.9	371.5	93.6	23.7	-0.4
Manufacturing	671.1	427.9	512.3	518.2	-152.9	90.3	5.9
Professional & Business Services	260.5	255.9	318.1	316.8	56.3	60.9	-1.3
Financial Activities	145.7	130.7	130.6	130.6	-15.1	-0.1	0.0
Construction	154.1	116.5	128.6	127.7	-26.4	11.2	-0.9
Leisure and Hospitality	267.2	276.8	299.2	295.4	28.2	18.6	-3.8
Trade, Transportation & Utilities	617.5	545.7	573.8	571.8	-45.7	26.1	-2.0
.....Trade	485.1	421.6	435.5	435.9	-49.2	14.3	0.4
.....Transportation, Warehousing & Utilities	132.4	124.1	138.3	135.9	3.5	11.8	-2.4
All Other	166.4	158.6	165.9	165.7	-0.7	7.1	-0.2
<b>Total Private</b>	<b>2,612.6</b>	<b>2,327.4</b>	<b>2,571.1</b>	<b>2,569.2</b>	<b>-43.4</b>	<b>241.8</b>	<b>-1.9</b>
Government (Includes Public Schools & Hospitals)	404.6	434.5	428.5	424.8	20.2	-9.7	-3.7
<b>Total Nonfarm</b>	<b>3,017.2</b>	<b>2,761.9</b>	<b>2,999.6</b>	<b>2,994.0</b>	<b>-23.2</b>	<b>232.1</b>	<b>-5.6</b>
<b>United States Total Private</b>	<b>110,873.0</b>	<b>108,096.0</b>	<b>117,288.0</b>	<b>117,524.0</b>	<b>6,651.0</b>	<b>9,428.0</b>	<b>236.0</b>

Source: Current Employment Statistics, seasonally adjusted



## Indiana Statewide Seasonally Adjusted Estimates -- September 2014

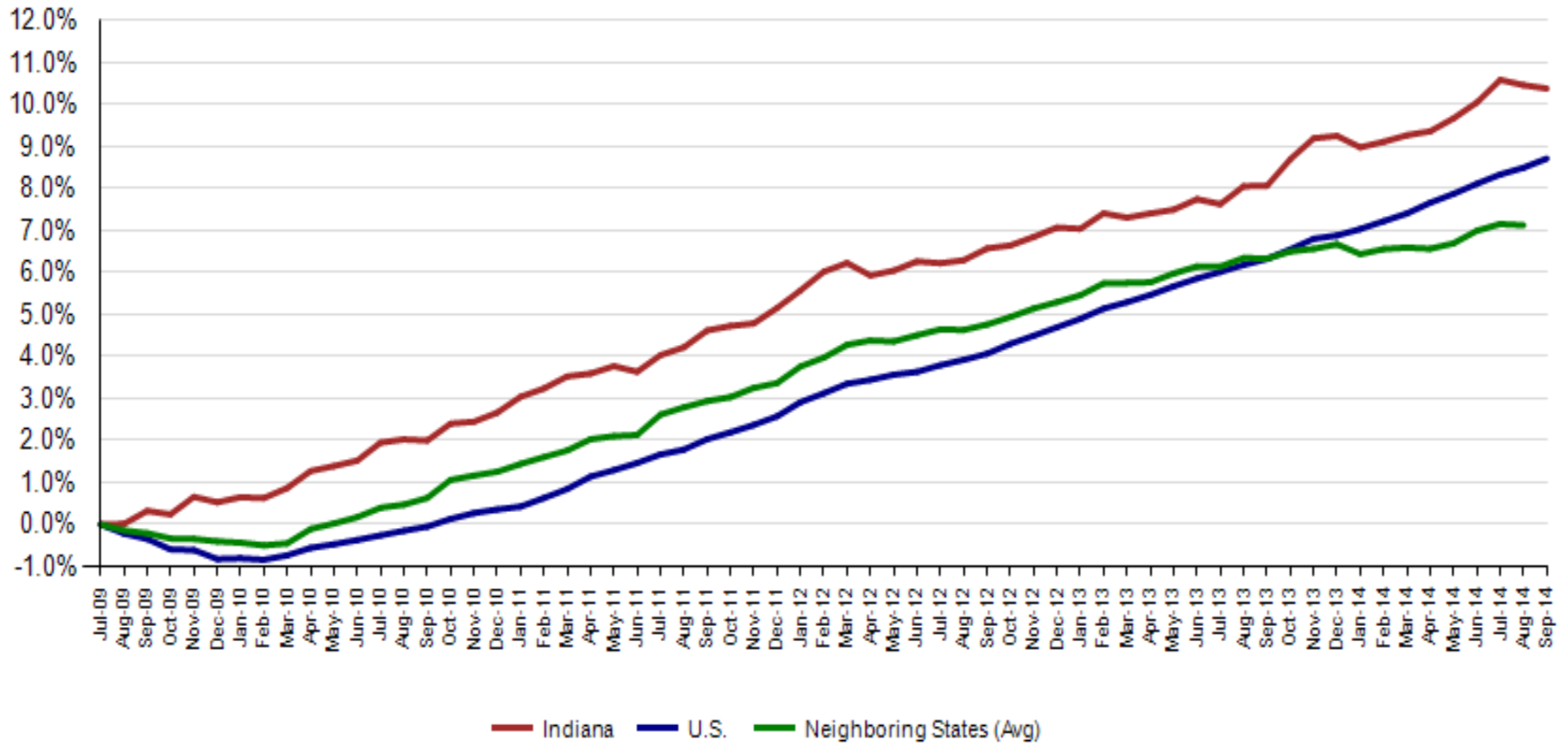
Supersector	Private Empl. Peak March 2000	Private Empl. Trough July 2009	August 2014	September 2014	% Chg. Since Peak	% Chg. Since Trough	% Month to Month Change
Private Educational & Health Services	330.1	415.3	442.6	443.0	34.2%	6.7%	0.1%
.....Private Educational Services	52.2	67.5	70.7	71.5	37.0%	5.9%	1.1%
.....Health Care & Social Assistance	277.9	347.8	371.9	371.5	33.7%	6.8%	-0.1%
Manufacturing	671.1	427.9	512.3	518.2	-22.8%	21.1%	1.2%
Professional & Business Services	260.5	255.9	318.1	316.8	21.6%	23.8%	-0.4%
Financial Activities	145.7	130.7	130.6	130.6	-10.4%	-0.1%	0.0%
Construction	154.1	116.5	128.6	127.7	-17.1%	9.6%	-0.7%
Leisure and Hospitality	267.2	276.8	299.2	295.4	10.6%	6.7%	-1.3%
Trade, Transportation & Utilities	617.5	545.7	573.8	571.8	-7.4%	4.8%	-0.3%
.....Trade	485.1	421.6	435.5	435.9	-10.1%	3.4%	0.1%
.....Transportation, Warehousing & Utilities	132.4	124.1	138.3	135.9	2.6%	9.5%	-1.7%
All Other	166.4	158.6	165.9	165.7	-0.4%	4.5%	-0.1%
<b>Total Private</b>	<b>2,612.6</b>	<b>2,327.4</b>	<b>2,571.1</b>	<b>2,569.2</b>	<b>-1.7%</b>	<b>10.4%</b>	<b>-0.1%</b>
Government (Includes Public Schools & Hospitals)	404.6	434.5	428.5	424.8	5.0%	-2.2%	-0.9%
<b>Total Nonfarm</b>	<b>3,017.2</b>	<b>2,761.9</b>	<b>2,999.6</b>	<b>2,994.0</b>	<b>-0.8%</b>	<b>8.4%</b>	<b>-0.2%</b>
<b>United States Total Private</b>	<b>110,873.0</b>	<b>108,096.0</b>	<b>117,288.0</b>	<b>117,524.0</b>	<b>6.0%</b>	<b>8.7%</b>	<b>0.2%</b>



## Indiana Employment Change % Compared to U.S.

Industry	Indiana Month to Month	U.S. Month to Month	Indiana vs U.S. Change	Indiana Year-to-Date	U.S. Year-to-Date	Indiana vs U.S. Change	Indiana Year-to-Year	U.S. Year-to-Year	Indiana vs U.S. Change
Private Educational & Health Services	0.1%	0.1%	UNDER	0.0%	1.6%	UNDER	0.6%	1.9%	UNDER
.....Private Educational Services	1.1%	0.3%	OVER	1.4%	1.4%	OVER	6.9%	1.6%	OVER
.....Health Care & Social Assistance	-0.1%	0.1%	UNDER	-0.3%	1.6%	UNDER	-0.5%	1.9%	UNDER
Manufacturing	1.2%	0.0%	OVER	4.1%	0.8%	OVER	5.2%	1.3%	OVER
Professional & Business Services	-0.4%	0.4%	UNDER	0.2%	3.0%	UNDER	2.5%	3.8%	UNDER
Financial Activities	0.0%	0.2%	UNDER	0.2%	1.1%	UNDER	0.8%	1.1%	UNDER
Construction	-0.7%	0.3%	UNDER	2.2%	3.5%	UNDER	5.8%	3.9%	OVER
Leisure and Hospitality	-1.3%	0.2%	UNDER	0.5%	1.7%	UNDER	1.6%	2.6%	UNDER
Trade, Transportation & Utilities	-0.3%	0.1%	UNDER	-0.3%	1.3%	UNDER	0.2%	2.0%	UNDER
.....Trade	0.1%	0.2%	UNDER	-0.3%	1.1%	UNDER	0.3%	1.8%	UNDER
.....Transportation, Warehousing & Utils	-1.7%	0.0%	UNDER	-0.3%	2.0%	UNDER	0.1%	2.8%	UNDER
All Other	-0.1%	0.2%	UNDER	1.6%	1.1%	OVER	2.5%	1.2%	OVER
Total Private	-0.1%	0.2%	UNDER	1.0%	1.7%	UNDER	2.1%	2.3%	UNDER
Government (Includes Public Schools & Hospitals)	-0.9%	0.1%	UNDER	0.6%	0.3%	OVER	1.4%	0.2%	OVER
Total Nonfarm	-0.2%	0.2%	UNDER	1.0%	1.5%	UNDER	2.0%	1.9%	OVER

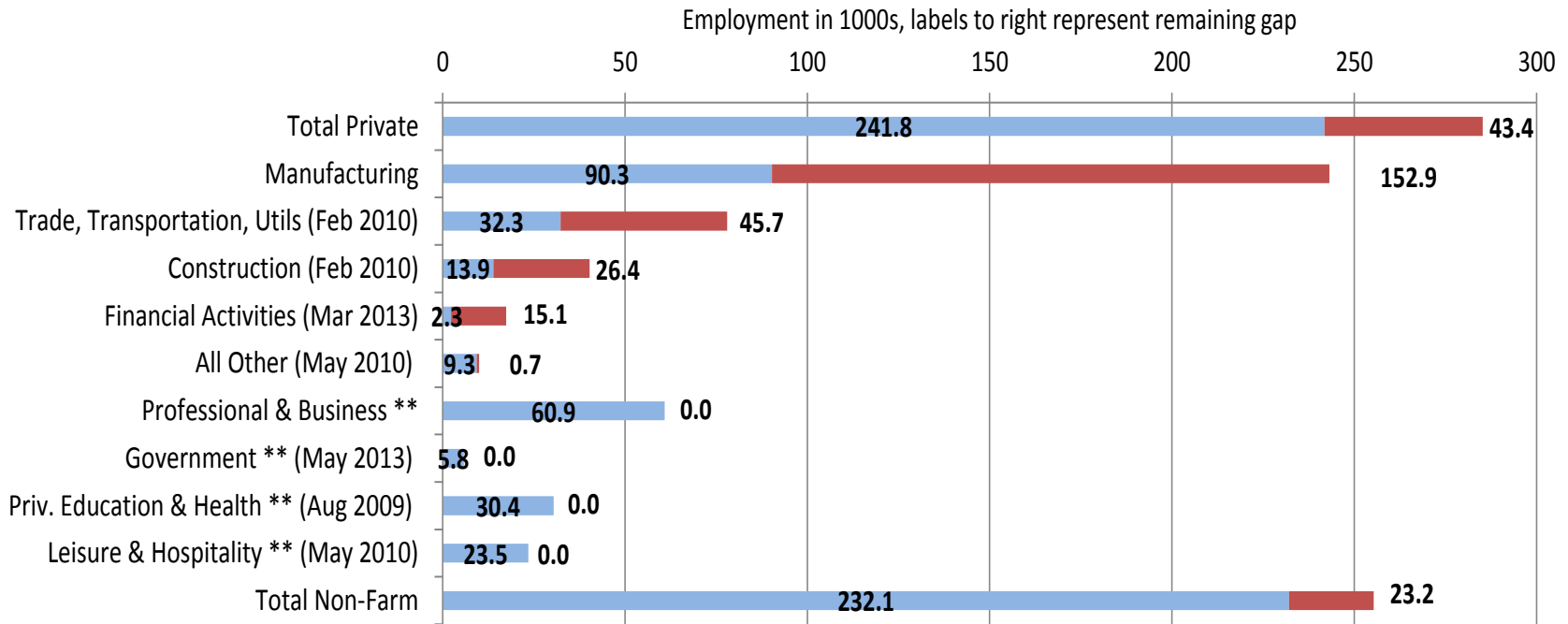
## Private Sector Job Growth Since the Low Point of Employment in Indiana



Source: Current Employment Statistics, seasonally adjusted



### Trough to September 2014 Employment by Supersector, s.a.

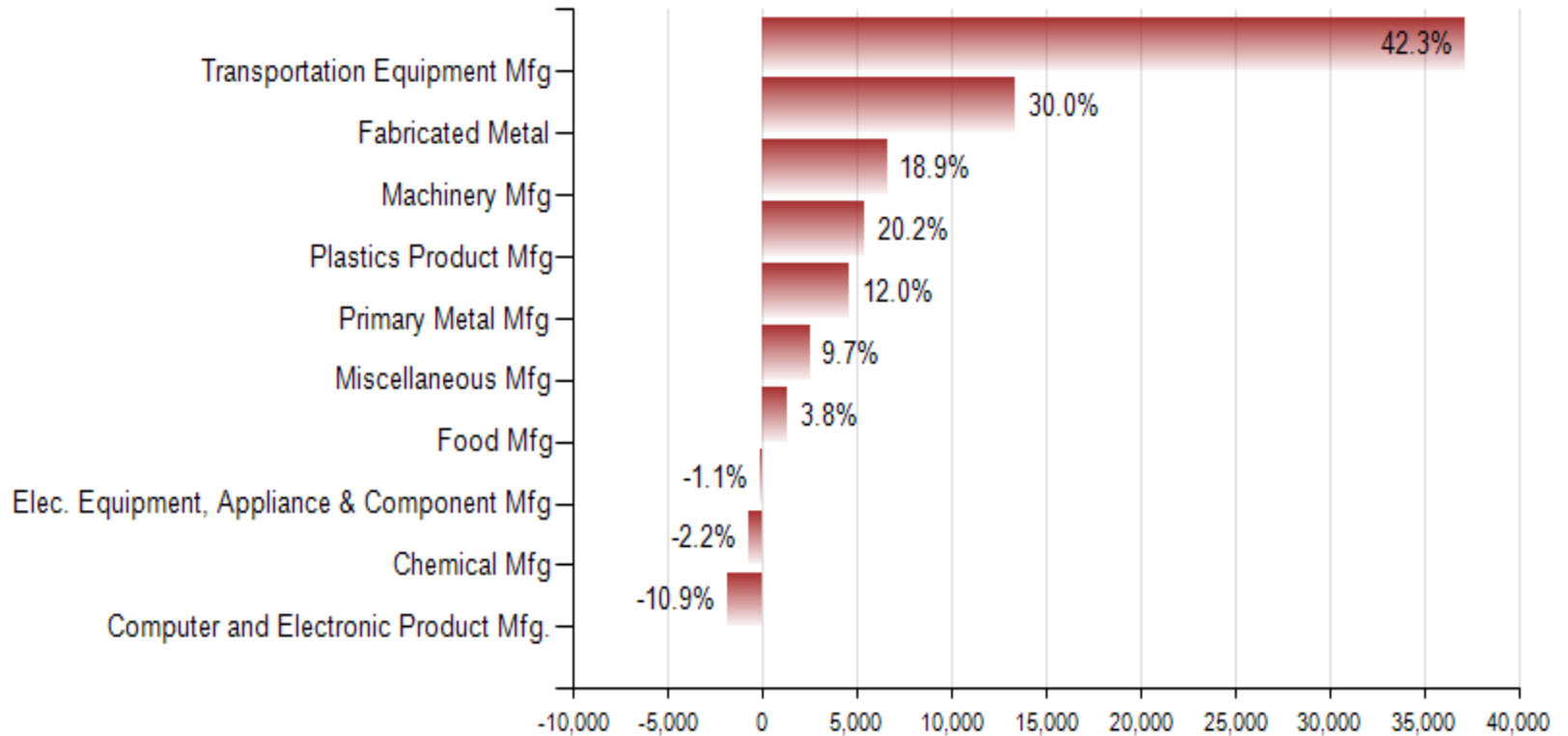


\*\* already above March 2000 peak

■ Trough to Current ■ Remaining Gap



### Manufacturing Job Change, Sep 2009 - Sep 2014

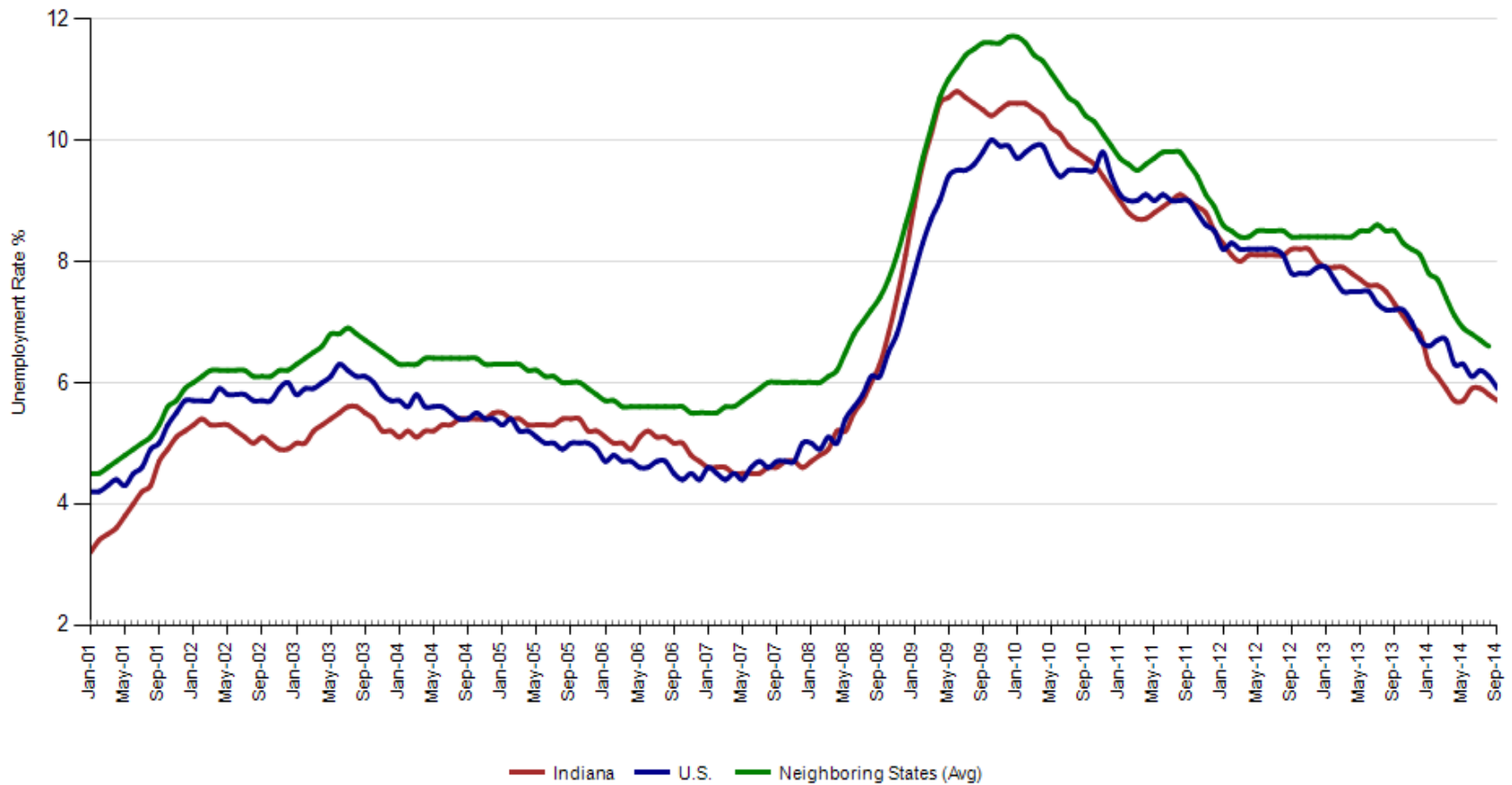


Source: Current Employment Statistics, not seasonally adjusted





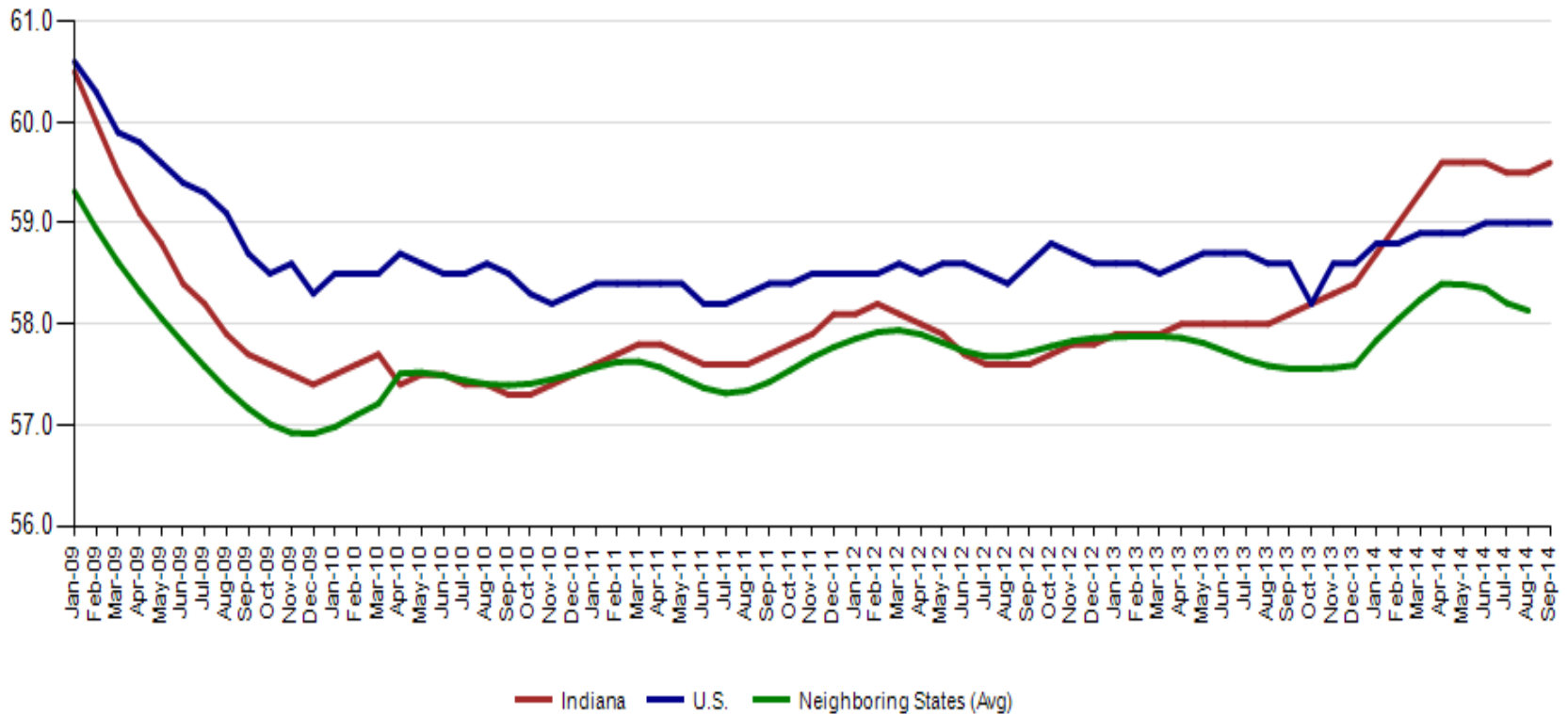
### Unemployment Rate, Seasonally Adjusted



Source: Local Area Unemployment Statistics



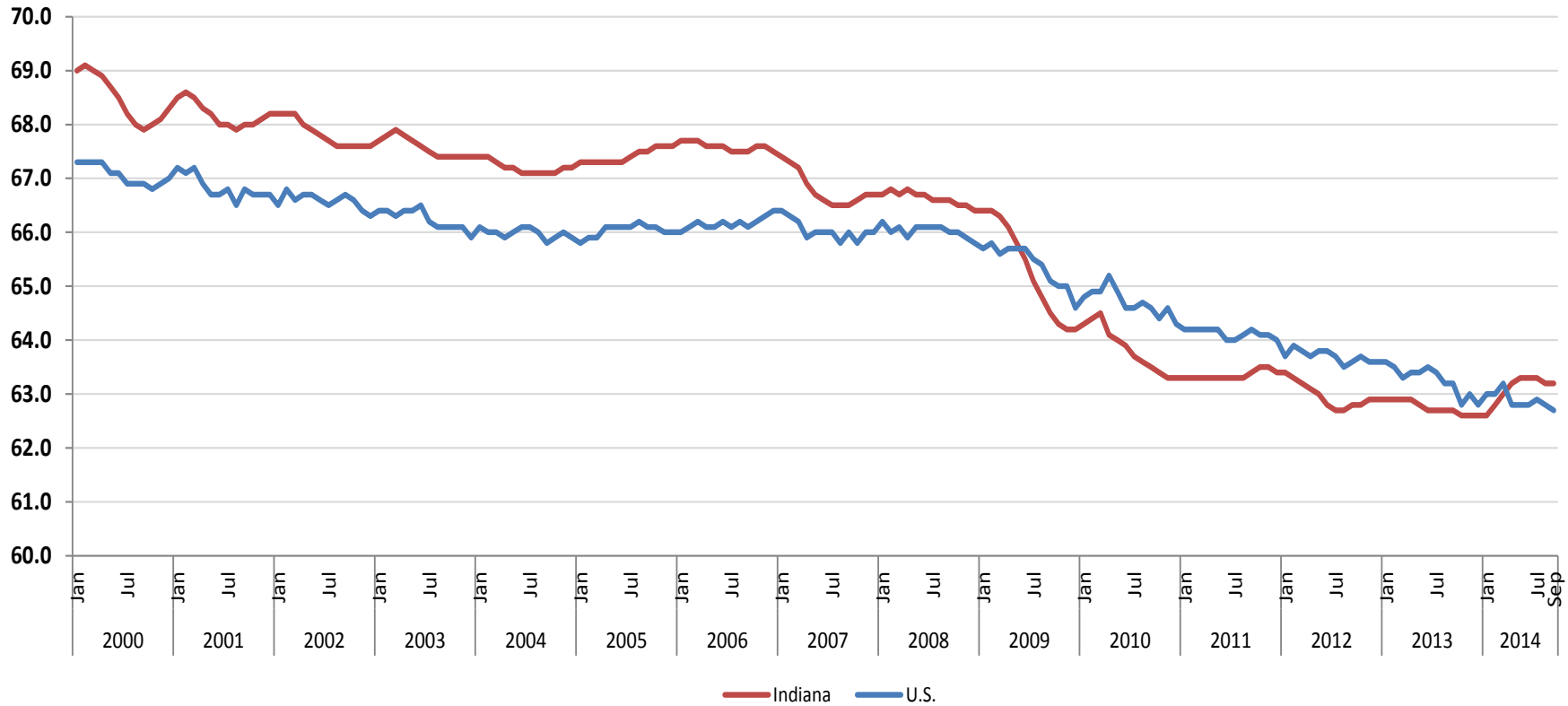
### Employment to Population Ratio (Seasonally Adjusted)



Source: Local Area Unemployment Statistics

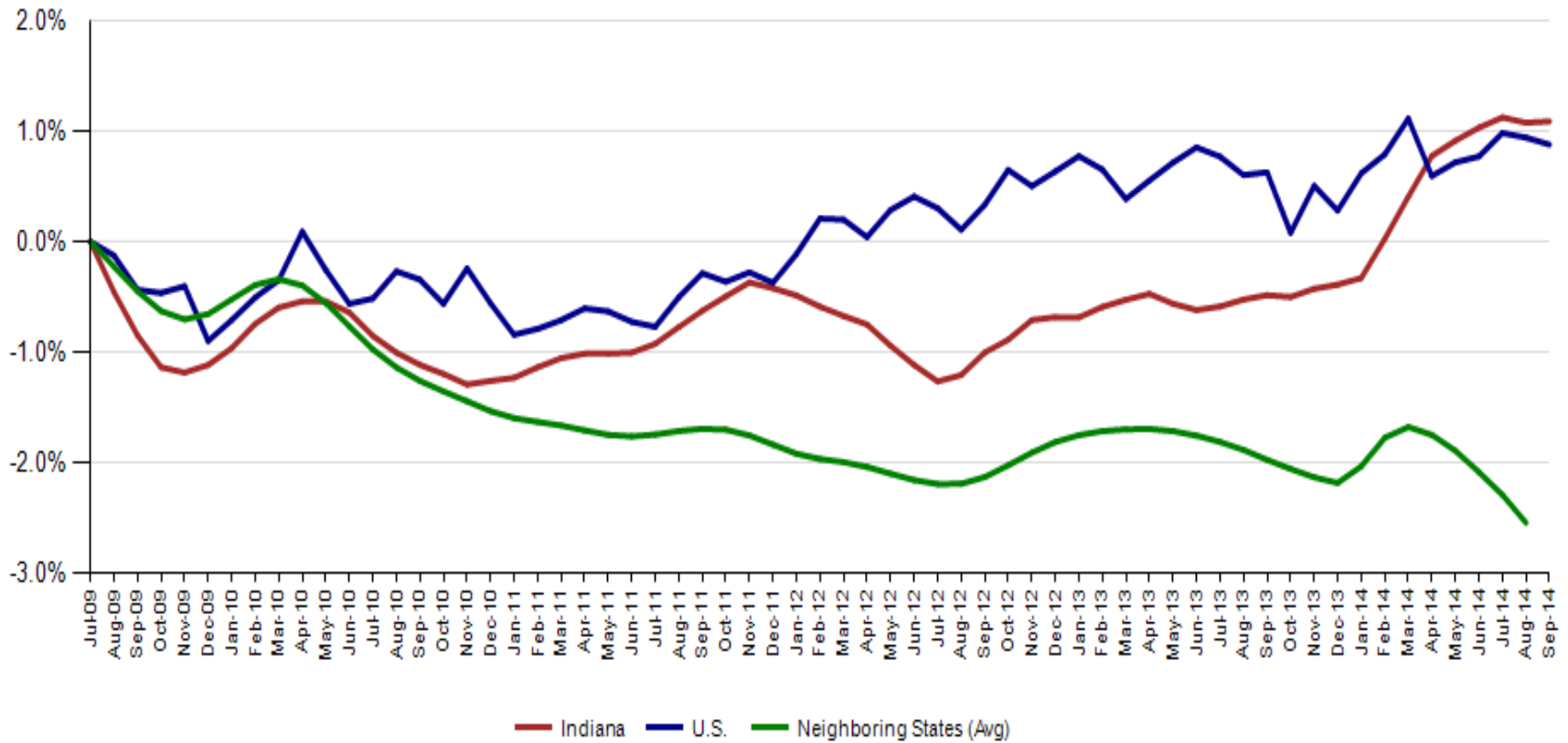


## Labor Force Participation, Indiana and the U.S.





### Labor Force Change Since July 2009 Indiana Trough, S.A.



Source: Local Area Unemployment Statistics



### Labor Force Estimates, IN, U.S. and Other Midwest States Average

Employment	2006		2009		2012		2013		2014	
	Aug	Sep	Aug	Sep	Aug	Sep	Aug	Sep	Aug	Sep
<b>Indiana</b>	3,075,435	3,081,147	2,844,157	2,836,309	2,900,854	2,904,709	2,941,464	2,947,805	3,042,818	3,046,944
<i>Year-to-Year Chg</i>	1.3%	1.3%	-6.9%	-6.8%	0.6%	0.5%	1.4%	1.5%	3.4%	3.4%
<b>U.S. (in 1000s)</b>	144,625	144,815	139,492	138,818	142,204	142,947	144,179	144,270	146,368	146,600
<i>Year-to-Year Chg</i>	1.5%	1.7%	-3.9%	-4.3%	1.6%	2.0%	1.4%	0.9%	1.5%	1.6%
<b>Neighboring States Aggregate</b>	18,458,036	18,500,113	17,173,859	17,124,731	17,410,187	17,431,054	17,454,367	17,454,567	17,709,326	
<i>Year-to-Year Chg</i>	1.5%	1.6%	-5.5%	-5.5%	0.9%	0.9%	0.3%	0.1%	1.5%	

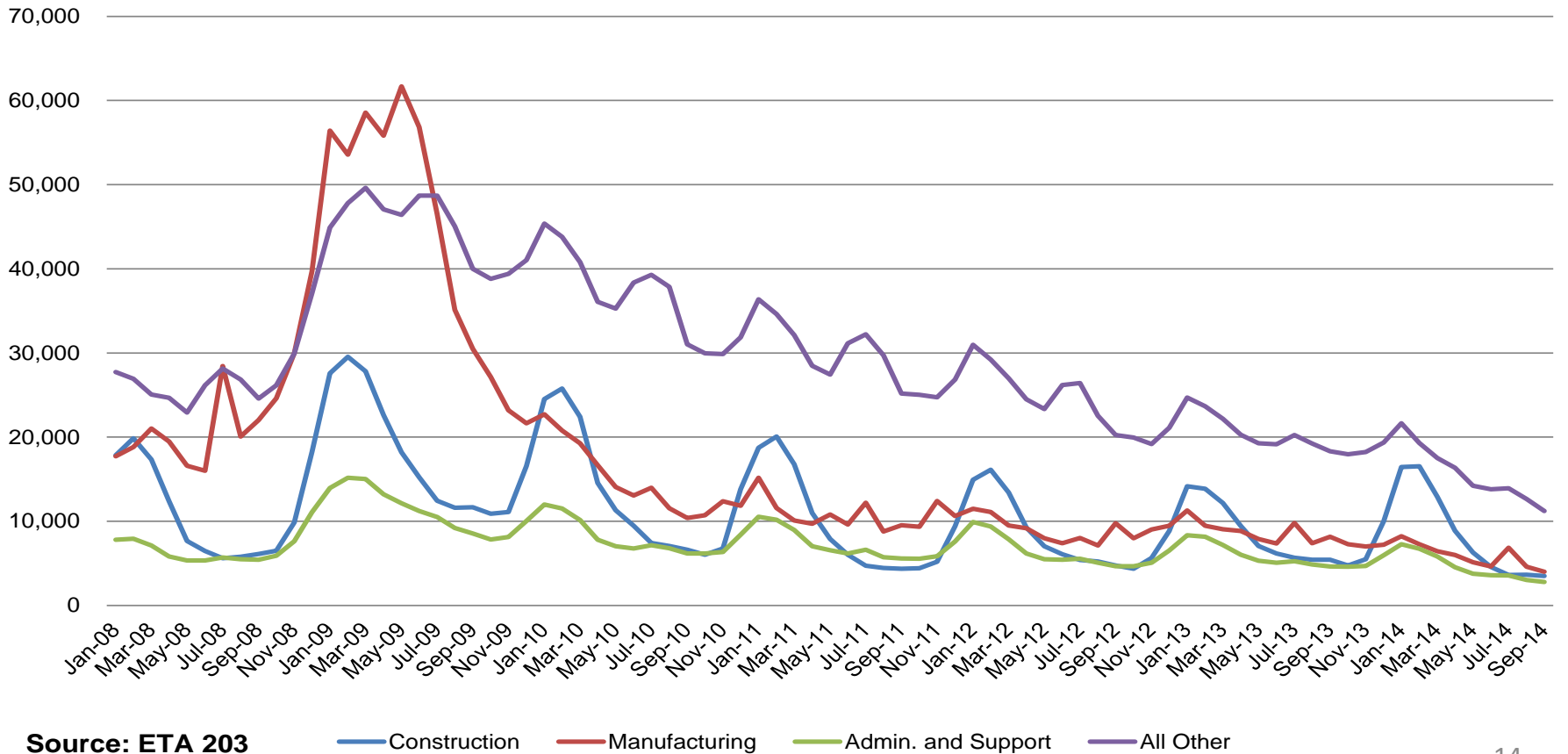
Unemployment	2006		2009		2012		2013		2014	
	Aug	Sep	Aug	Sep	Aug	Sep	Aug	Sep	Aug	Sep
<b>Indiana</b>	164,885	163,618	337,839	333,126	257,120	259,785	238,384	233,323	188,272	184,550
<i>Year-to-Year Chg</i>	-5.3%	-5.5%	74.6%	61.7%	-10.7%	-9.4%	-7.3%	-10.2%	-21.0%	-20.9%
<b>U.S. (in 1000s)</b>	7,091	6,847	14,814	15,009	12,464	12,070	11,256	11,203	9,591	9,262
<i>Year-to-Year Chg</i>	-3.5%	-9.3%	57.0%	58.1%	-9.8%	-13.2%	-9.7%	-7.2%	-14.8%	-17.3%
<b>Neighboring States Aggregate</b>	1,098,166	1,096,856	2,234,704	2,240,215	1,615,457	1,606,426	1,631,074	1,613,393	1,247,786	
<i>Year-to-Year Chg</i>	-6.1%	-5.9%	57.9%	54.1%	-13.7%	-12.9%	1.0%	0.4%	-23.5%	

Labor Force	2006		2009		2012		2013		2014	
	Aug	Sep	Aug	Sep	Aug	Sep	Aug	Sep	Aug	Sep
<b>Indiana</b>	3,240,320	3,244,765	3,181,996	3,169,435	3,157,974	3,164,494	3,179,848	3,181,128	3,231,090	3,231,494
<i>Year-to-Year Chg</i>	0.9%	0.9%	-2.0%	-2.5%	-0.4%	-0.4%	0.7%	0.5%	1.6%	1.6%
<b>U.S. (in 1000s)</b>	151,716	151,662	154,307	153,827	154,669	155,018	155,435	155,473	155,959	155,862
<i>Year-to-Year Chg</i>	1.3%	1.1%	-0.2%	-0.5%	0.6%	0.6%	0.5%	0.3%	0.3%	0.3%
<b>Neighboring States Aggregate</b>	19,556,202	19,596,969	19,408,563	19,364,946	19,025,644	19,037,480	19,085,441	19,067,960	18,957,112	
<i>Year-to-Year Chg</i>	1.1%	1.1%	-1.0%	-1.0%	-0.5%	-0.4%	0.3%	0.2%	-0.7%	



## Regular UI Claims by Industry

For the Reference Week of Each Month



Source: ETA 203

Construction Manufacturing Admin. and Support All Other



## CES LAUS Point in Time Comparison

	March 2000 (Peak)	July 2009 (Trough)	August 2014	Septem ber 2014	Change Peak	Change Trough	Change Prev. Month
CES Employed	3,017.2	2,761.9	2,999.6	2,994.0	-23.2	232.1	-5.6
LAUS Employed	3,076.1	2,854.4	3,042.8	3,046.9	-29.1	192.6	4.1
LAUS Unemployed	89.6	342.3	188.3	184.6	95.0	-157.7	-3.7
Labor Force	3,165.7	3,196.6	3,231.1	3,231.5	65.8	34.9	0.4
Unemployment Rate	2.8	10.7	5.8	5.7	2.9	-5.0	-0.1

*(LAUS components may not sum exactly due to rounding.)*

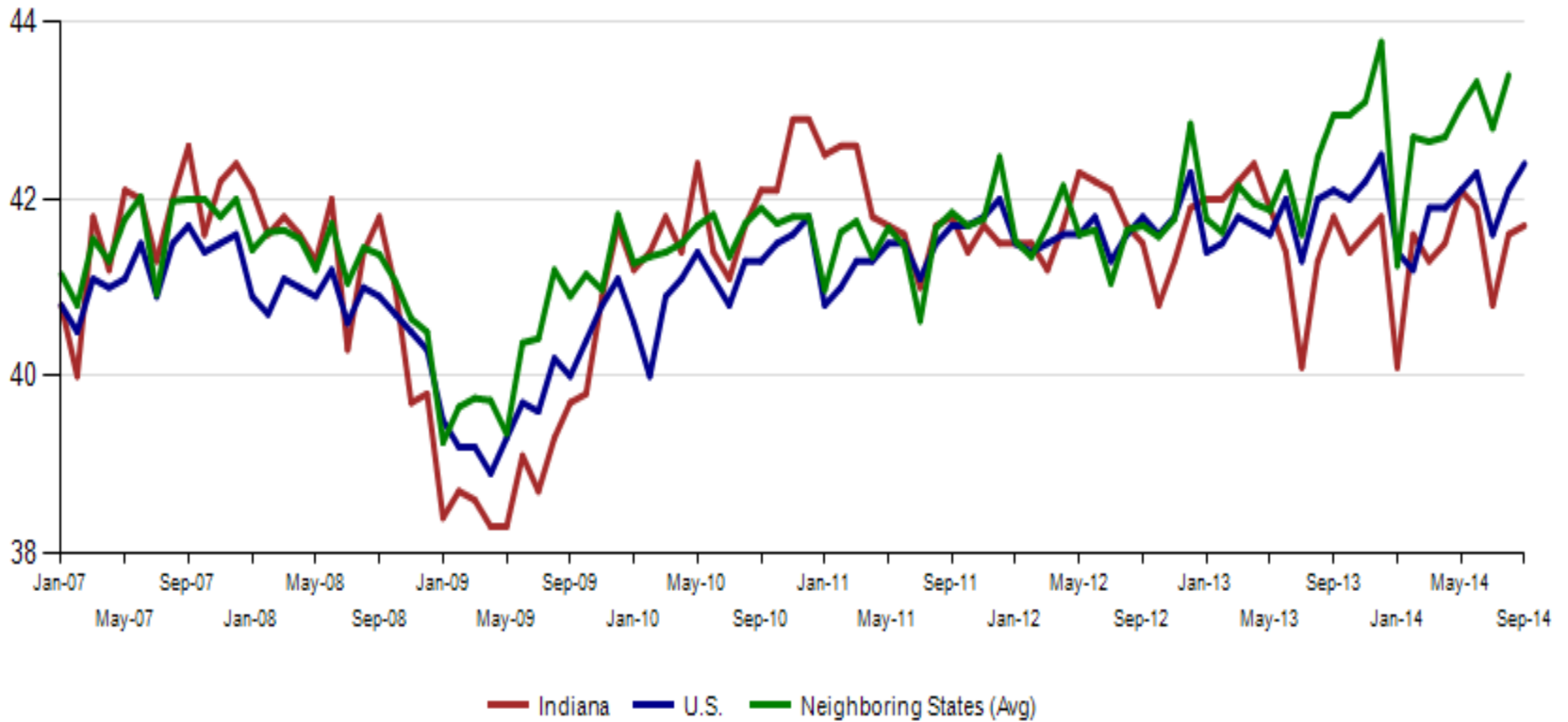


## **Additional Reference/Background Material**





### Avg. Weekly Manufacturing Production Hours, Non Seasonally Adjusted



Source: Current Employment Statistics, not seasonally adjusted



### Revisions to August 2014 Estimates

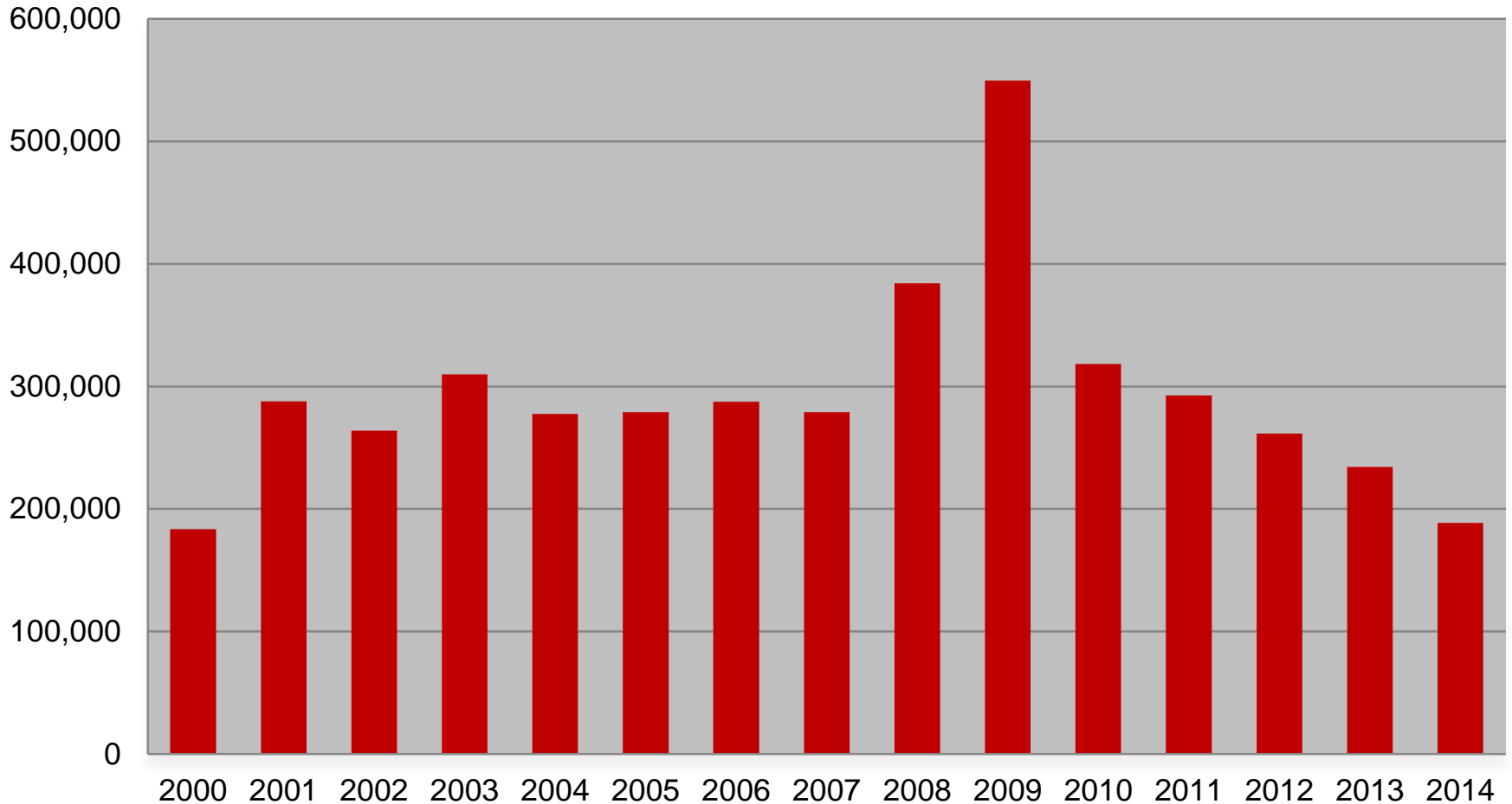
INDUSTRY TITLE	Jul	Aug Prel	Aug Rev	Revision	Chg from Jul	Prel Chg from July
Total Nonfarm	2994.2	2997.6	2999.6	2.0	5.4	3.4
Total Private	2574	2571.4	2571.1	-0.3	-2.9	-2.6
Construction	<b>129.1</b>	<b>129.2</b>	<b>128.6</b>	-0.6	-0.5	0.1
Financial Activities	131.5	131.8	130.6	-1.2	-0.9	0.3
Education and Health Services	<b>444.8</b>	<b>440.7</b>	<b>442.6</b>	1.9	-2.2	-4.1
Leisure and Hospitality	<b>300.1</b>	<b>299.8</b>	<b>299.2</b>	-0.6	-0.9	-0.3
Government	<b>420.2</b>	<b>426.2</b>	<b>428.5</b>	2.3	8.3	6.0

Source: Current Employment Statistics, s.a.



# Aggregate Weekly Initial Claims (total initial claims year-to-date, 40 weeks)

**Aggregate claims for 2014 are the lowest since 2000  
(188,517 vs 183,634 ).**





## Regular UI Claims – Reference Week (12<sup>th</sup> of the month) Input to LAUS Unemployment Rate Model

### Without earnings – Reference week claims

	2006	2007	2008	2009	2010	2011	2012	2013	2014	OTM Change	OTY Change
JANUARY	65,898	71,296	75,294	150,888	105,910	84,706	71,042	63,223	49,377	6,893	-13,846
FEBRUARY	67,347	75,432	78,068	154,388	103,432	80,852	69,570	60,183	52,316	2,939	-7,867
MARCH	59,716	64,936	74,759	157,257	93,469	71,696	60,752	54,578	45,928	(6,388)	-8,650
APRIL	48,103	53,325	64,948	143,842	74,481	59,036	51,652	48,548	39,717	(6,211)	-8,831
MAY	46,779	46,002	55,480	141,174	66,779	54,680	46,328	42,997	32,460	(7,257)	-10,537
JUNE	45,533	46,350	57,228	136,670	67,996	55,021	46,820	41,722	29,524	(2,936)	-12,198
JULY	53,424	51,141	72,032	121,336	69,447	58,031	47,268	44,597	30,845	1,321	-13,752
AUGUST	45,021	43,887	61,985	103,509	62,976	51,710	42,134	39,998	26,061	(4,784)	-13,937
SEPTEMBER	41,247	42,500	61,548	92,680	58,280	46,824	41,955	39,563	23,554	(2,507)	-16,009
OCTOBER	42,487	42,313	67,306	86,275	58,317	46,909	39,467	37,778			
NOVEMBER	43,868	45,362	81,466	82,451	58,846	51,201	41,018	38,517			
DECEMBER	53,566	54,201	109,651	91,814	65,279	55,104	46,371	42,484			



Hiring/re-hiring activity for the 3 months ending in August were almost 5% higher than for the same period in 2013, with Retail Trade and Manufacturing posting the largest over-the-year gains. Construction, Professional & Business Services and Arts, Entertainment and Recreation Services hiring also grew by more than 1,000 jobs over the year.

## New Hires Counts

### 2-Digit NAICS

For Selected Time Periods\*

Industry Title**	Jun-13	Jul-13	Aug-13	3-mo total	Jun-14	Jul-14	Aug-14	3-mo total	Yr-to-Yr Chg	Chg %
Admin. & Support & Waste Mgt. & Rem. Services	22,095	24,087	27,273	73,455	27,908	23,396	24,505	75,809	2,354	3.2%
Accommodation and Food Services	18,869	18,930	21,088	58,887	19,452	18,177	19,348	56,977	-1,910	-3.2%
Retail Trade	14,060	15,162	18,982	48,204	17,949	18,519	19,521	55,989	7,785	16.2%
Educational Services	8,637	6,144	34,139	48,920	9,303	6,519	33,272	49,094	174	0.4%
Manufacturing	13,784	12,275	12,712	38,771	17,015	13,717	13,689	44,421	5,650	14.6%
Health Care and Social Services	11,536	12,446	11,834	35,816	12,093	10,914	11,568	34,575	-1,241	-3.5%
Construction	8,026	6,877	5,649	20,552	8,831	7,186	6,053	22,070	1,518	7.4%
Transportation and Warehousing	4,138	4,788	4,642	13,568	3,735	3,506	3,990	11,231	-2,337	-17.2%
Professional, Scientific, and Technical Services	2,933	2,791	2,740	8,464	4,184	3,038	3,382	10,604	2,140	25.3%
Wholesale Trade	3,189	3,304	3,005	9,498	3,938	3,159	3,007	10,104	606	6.4%
Other Services(Except Public Administration)	3,484	2,494	3,027	9,005	3,588	2,435	2,741	8,764	-241	-2.7%
Finance and Insurance	2,355	2,671	2,300	7,326	2,830	2,519	2,741	8,090	764	10.4%
Arts, Entertainment, and Recreation	1,871	2,089	1,868	5,828	2,345	2,238	2,291	6,874	1,046	17.9%
Real Estate and Rental and Leasing	2,539	2,541	1,865	6,945	2,677	2,301	1,801	6,779	-166	-2.4%
Public Administration	2,605	1,426	1,472	5,503	3,275	1,453	1,639	6,367	864	15.7%
Unallocated	302	178	283	763	1,241	845	907	2,993	2,230	292.3%
Agriculture, Forestry, Fishing and Hunting	658	988	1,346	2,992	765	1,107	757	2,629	-363	-12.1%
Information	987	818	747	2552	1,054	672	688	2,414	-138	-5.4%
Management of Companies and Enterprises	285	261	312	858	298	230	214	742	-116	-13.5%
Mining	117	144	132	393	110	117	102	329	-64	-16.3%
Utilities	142	56	64	262	167	90	49	306	44	16.8%
<b>Total</b>	<b>122,612</b>	<b>120,470</b>	<b>155,480</b>	<b>398,562</b>	<b>142,758</b>	<b>122,138</b>	<b>152,265</b>	<b>417,161</b>	<b>18,599</b>	<b>4.7%</b>

Source: New Hire Reporting System