



INDIANA  
**WORKFORCE**  
DEVELOPMENT  
AND ITS **WorkOne** CENTERS

# Indiana's Employment and Labor Force Estimates October 2016

*11/16/2016*



# Key Points

## **The Indiana Unemployment Rate is 4.4% in October 2016.**

Nationally the rate is 4.9%.

- Indiana's rate has decreased 0.1 over the year from October 2015 and currently is 4.4%.
- Indiana's Labor Force decreased over the month by 16,052 over the month, with a decrease in employment of 10,805 and unemployment decreased by 5,084.
- Indiana's Labor Force increased 57,566 with 62,650 in employment. Unemployment has decreased by -5,247 since the start of 2016.
- Indiana's Labor Force increased 83,409 year to year change (October 2015 – October 2016), and has increased 174,888 since January 2013.
- Total private employment stands at 36,500 above the March 2000 Peak.
- Indiana's Labor Force Participation rate decreased over the month and is currently 65.0%. This remains above the US Labor Force Participation rate which stands at 62.8%.
- Private employment is up 156,200 since January 2013.



# Key Points

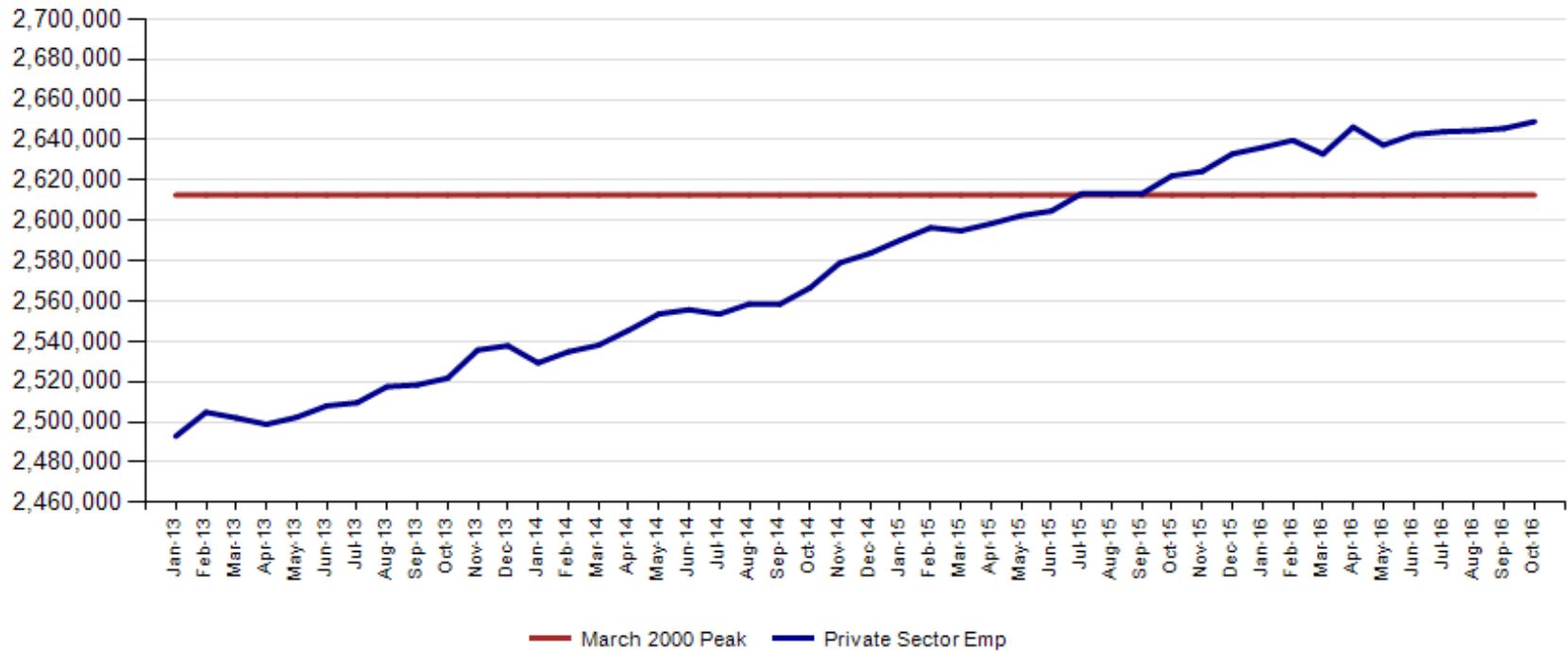
Indiana total private employment increased 3,400 over the month and has gains of 26,900 over the year. **This is the 16<sup>th</sup> month above the prior peak of 2,612,600.**

- **Indiana private employment now stands at 2,649,100.**
- **Private Education & Health Services had gains of 3,600.**
- **Trade Transportation & Utilities had gains 800**
- **Leisure and Hospitality had gains of 400.**
- **The All Other Category had gains of 400**
- **Professional and Business Services had declines of 700.**
- **Manufacturing had declines 600.**
- **Financial Activities had declines of 400.**
- **Construction had declines of 100.**



September Total private employment is now at 36,500 above the March 2000 Peak. This is the 16<sup>th</sup> month above the prior peak.

### Indiana Private Sector Employment





October Indiana private sector employment increased by 3,400 jobs over the month and is up 26,900 over the year. Private Education increased by 3,400 over the month. This represented the entire month to month jobs increase as the rest of the industries combined for no net job change from September.

### IN Employment Change Over the Month, Year-to-Date and Over the Year (seasonally adjusted)

Industry	October 2015	December 2015	September 2016	October 2016	Month Change	Y-to-D Change	Y-to-Y Change
Private Educational & Health Services	458.8	459.5	472.5	476.1	3.6	16.6	17.3
.....Private Educational Services	74.1	73.2	73.9	77.3	3.4	4.1	3.2
.....Health Care & Social Assistance	384.7	386.3	398.6	398.8	0.2	12.5	14.1
Manufacturing	521.2	520.2	514.6	514.0	-0.6	-6.2	-7.2
Professional & Business Services	328.3	327.9	325.4	324.7	-0.7	-3.2	-3.6
Financial Activities	132.5	131.3	133.7	133.3	-0.4	2.0	0.8
Construction	126.8	131.0	131.7	131.6	-0.1	0.6	4.8
Leisure and Hospitality	303.0	304.6	307.3	307.7	0.4	3.1	4.7
Trade, Transportation & Utilities	584.9	592.9	595.9	596.7	0.8	3.8	11.8
.....Trade	445.1	447.6	453.9	454.1	0.2	6.5	9.0
.....Transportation, Warehousing & Utilities	139.8	145.3	142.0	142.6	0.6	-2.7	2.8
All Other	166.7	165.7	164.6	165.0	0.4	-0.7	-1.7
Total Private	2,622.2	2,633.1	2,645.7	2,649.1	3.4	16.0	26.9
Government (Includes Public Schools & Hospitals)	425.3	426.6	430.2	428.6	-1.6	2.0	3.3
Total Nonfarm	3,047.5	3,059.7	3,075.9	3,077.7	1.8	18.0	30.2
United States Total Private	120,568.0	121,106.0	122,575.0	122,717.0	142.0	1,611.0	2,149.0



## October Total nonfarm is 60,500 over the March 2000 peak.

### IN Statewide Estimates (seasonally adjusted) -- October 2016

Supersector	Private Empl. Peak March 2000	Private Empl. Trough July 2009	September 2016	October 2016	Change Since Peak	Change Since Trough	Month to Month Change
Private Educational & Health Services	330.1	411.1	472.5	476.1	146.0	65.0	3.6
.....Private Educational Services	52.2	63.3	73.9	77.3	25.1	14.0	3.4
.....Health Care & Social Assistance	277.9	347.8	398.6	398.8	120.9	51.0	0.2
Manufacturing	671.1	427.9	514.6	514.0	-157.1	86.1	-0.6
Professional & Business Services	260.5	255.9	325.4	324.7	64.2	68.8	-0.7
Financial Activities	145.7	130.7	133.7	133.3	-12.4	2.6	-0.4
Construction	154.1	116.5	131.7	131.6	-22.5	15.1	-0.1
Leisure and Hospitality	267.2	276.8	307.3	307.7	40.5	30.9	0.4
Trade, Transportation & Utilities	617.5	545.7	595.9	596.7	-20.8	51.0	0.8
.....Trade	485.1	421.6	453.9	454.1	-31.0	32.5	0.2
.....Transportation, Warehousing & Utilities	132.4	124.1	142.0	142.6	10.2	18.5	0.6
All Other	166.4	158.6	164.6	165.0	-1.4	6.4	0.4
Total Private	2,612.6	2,323.2	2,645.7	2,649.1	36.5	325.9	3.4
Government (Includes Public Schools & Hospitals)	404.6	434.5	430.2	428.6	24.0	-5.9	-1.6
Total Nonfarm	3,017.2	2,757.7	3,075.9	3,077.7	60.5	320.0	1.8
United States Total Private	110,875.0	108,170.0	122,575.0	122,717.0	11,842.0	14,547.0	142.0



Indiana job growth over the year remains under the National trend in private sector gains in October. Private Educational & Health Services, Construction and Trade Transportation and Utilities continue to grow faster than the US over the year.

### IN Employment Change Compared to the U.S.

Industry	Indiana Month to Month	U.S. Month to Month	Indiana vs U.S. Change	Indiana Year-to-Date	U.S. Year-to-Date	Indiana vs U.S. Change	Indiana Year-to-Year	U.S. Year-to-Year	Indiana vs U.S. Change
Private Educational & Health Services	0.8%	0.2%	OVER	3.6%	2.2%	OVER	3.8%	2.7%	OVER
.....Private Educational Services	4.6%	0.4%	OVER	5.6%	2.0%	OVER	4.3%	2.6%	OVER
.....Health Care & Social Assistance	0.1%	0.2%	UNDER	3.2%	2.2%	OVER	3.7%	2.7%	OVER
Manufacturing	-0.1%	-0.1%	UNDER	-1.2%	-0.5%	UNDER	-1.4%	-0.4%	UNDER
Professional & Business Services	-0.2%	0.2%	UNDER	-1.0%	2.2%	UNDER	-1.1%	2.7%	UNDER
Financial Activities	-0.3%	0.2%	UNDER	1.5%	1.8%	UNDER	0.6%	2.1%	UNDER
Construction	-0.1%	0.2%	UNDER	0.5%	1.2%	UNDER	3.8%	3.0%	OVER
Leisure and Hospitality	0.1%	0.1%	OVER	1.0%	1.5%	UNDER	1.6%	2.0%	UNDER
Trade, Transportation & Utilities	0.1%	0.0%	OVER	0.6%	1.1%	UNDER	2.0%	1.5%	OVER
.....Trade	0.0%	0.0%	OVER	1.5%	1.3%	OVER	2.0%	1.6%	OVER
.....Transportation, Warehousing & Utils	0.4%	0.2%	OVER	-1.9%	0.6%	UNDER	2.0%	1.2%	OVER
All Other	0.2%	0.1%	OVER	-0.4%	0.0%	UNDER	-1.0%	-0.2%	UNDER
Total Private	0.1%	0.1%	OVER	0.6%	1.3%	UNDER	1.0%	1.8%	UNDER
Government (Includes Public Schools & Hospitals)	-0.4%	0.1%	UNDER	0.5%	0.9%	UNDER	0.8%	0.9%	UNDER
Total Nonfarm	0.1%	0.1%	UNDER	0.6%	1.3%	UNDER	1.0%	1.7%	UNDER



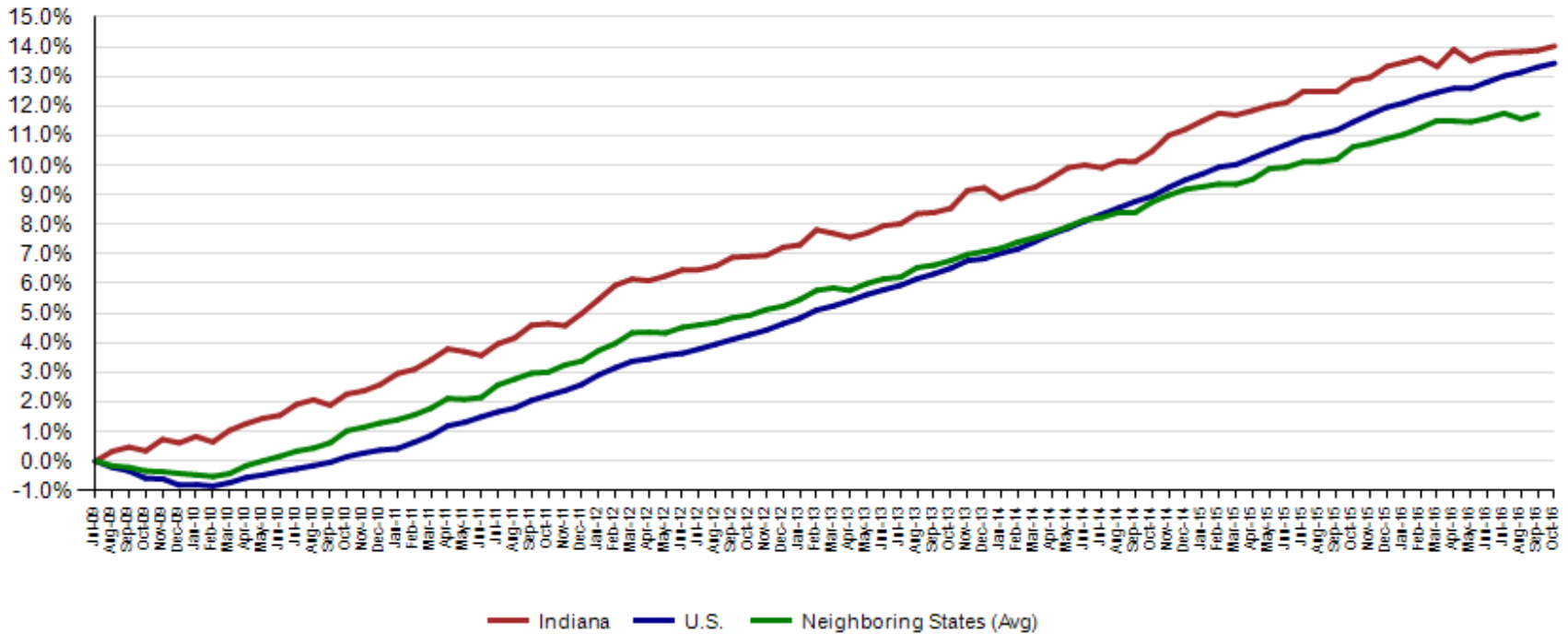
September Total Private preliminary estimates were revised down by 9,000. The change from August to September is now an increase of 1,100.

Revisions to September 2016 Estimates						
INDUSTRY TITLE	Aug	Sep Prel	Sep Rev	Revision	Chg from Aug	Prel Chg from Aug
Total Nonfarm	3068.9	3085.2	3075.9	-9.3	7.0	16.3
Total Private	2644.6	2654.7	2645.7	-9.0	1.1	10.1
Goods Producing	649.7	653.3	652.4	-0.9	2.7	3.6
Service-Providing	2419.2	2431.9	2423.5	-8.4	4.3	12.7
Private Service Providing	1994.9	2001.4	1993.3	-8.1	-1.6	6.5
Construction	130.2	132.1	131.7	-0.4	1.5	1.9
Manufacturing	513.5	515.1	514.6	-0.5	1.1	1.6
Trade, Transportation, and Utilities	598.6	597.3	595.9	-1.4	-2.7	-1.3
Wholesale Trade	118.8	117.1	117.2	0.1	-1.6	-1.7
Retail Trade	337.9	337.9	336.7	-1.2	-1.2	0.0
Transportation, Warehousing, and Utilities	141.9	142.3	142.0	-0.3	0.1	0.4
Information	31.8	31.7	31.7	0.0	-0.1	-0.1
Financial Activities	132.8	133.5	133.7	0.2	0.9	0.7
Finance and Insurance	97.0	97.8	97.8	0.0	0.8	0.8
Real Estate and Rental and Leasing	35.8	35.7	35.9	0.2	0.1	-0.1
Professional and Business Services	324.9	326.6	325.4	-1.2	0.5	1.7
Professional, Scientific, and Technical Services	109.9	109.2	109.3	0.1	-0.6	-0.7
Management of Companies and Enterprises	33.7	33.9	33.9	0.0	0.2	0.2
Admin & Support & Waste Mgmt & Remediation Services	181.3	183.5	182.2	-1.3	0.9	2.2
Education and Health Services	472.9	477.2	472.5	-4.7	-0.4	4.3
Educational Services	73.0	77.5	73.9	-3.6	0.9	4.5
Health Care and Social Assistance	399.9	399.7	398.6	-1.1	-1.3	-0.2
Leisure and Hospitality	306.6	308.4	307.3	-1.1	0.7	1.8
Other Services	127.3	126.7	126.8	0.1	-0.5	-0.6
Government	424.3	430.5	430.2	-0.3	5.9	6.2



Since the low point of employment in July 2009, private sector employment growth in Indiana has surpassed the U.S. (14.0% vs. 13.4%).

**Private Sector Job Growth Since the Low Point of Employment in Indiana**

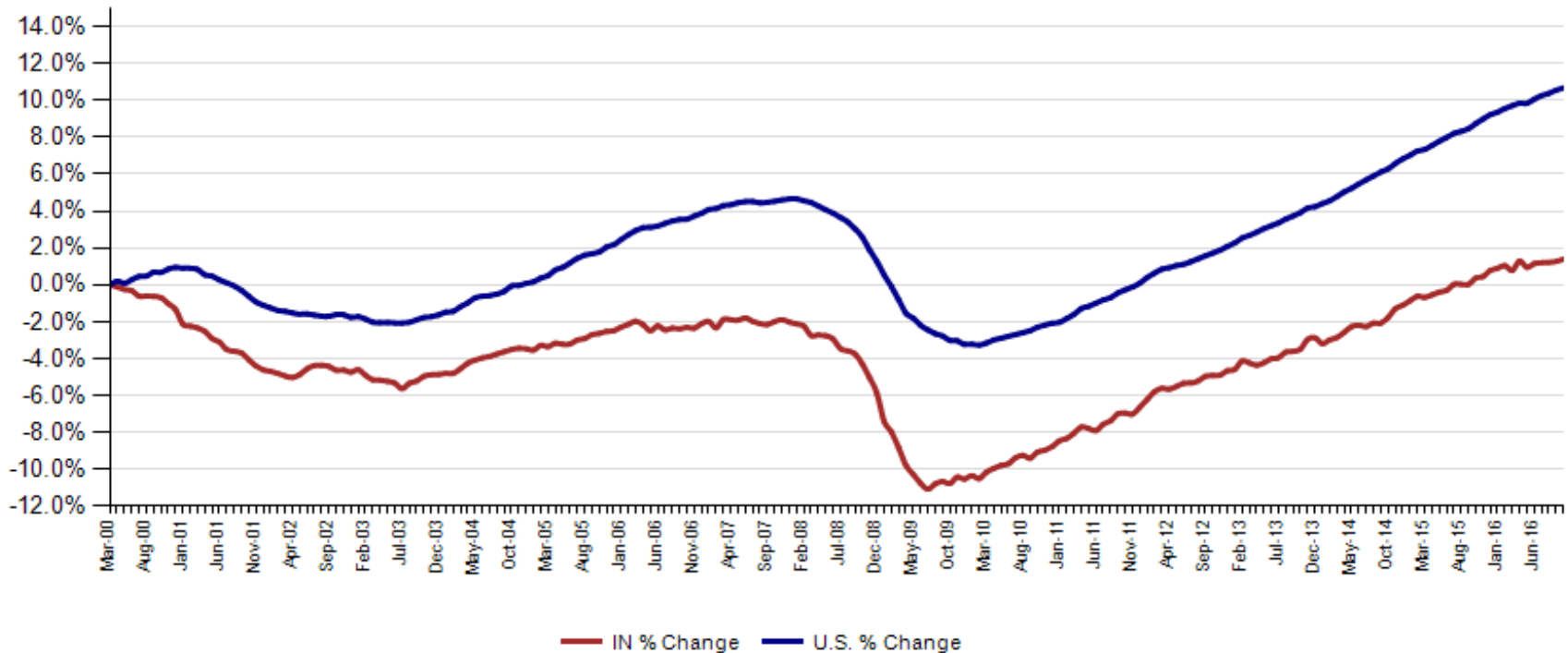


Source: Current Employment Statistics, seasonally adjusted



Since Indiana's high point of employment (March 2000), private sector employment growth in Indiana has lagged the U.S. (1.4% growth vs. 10.7% nationally).

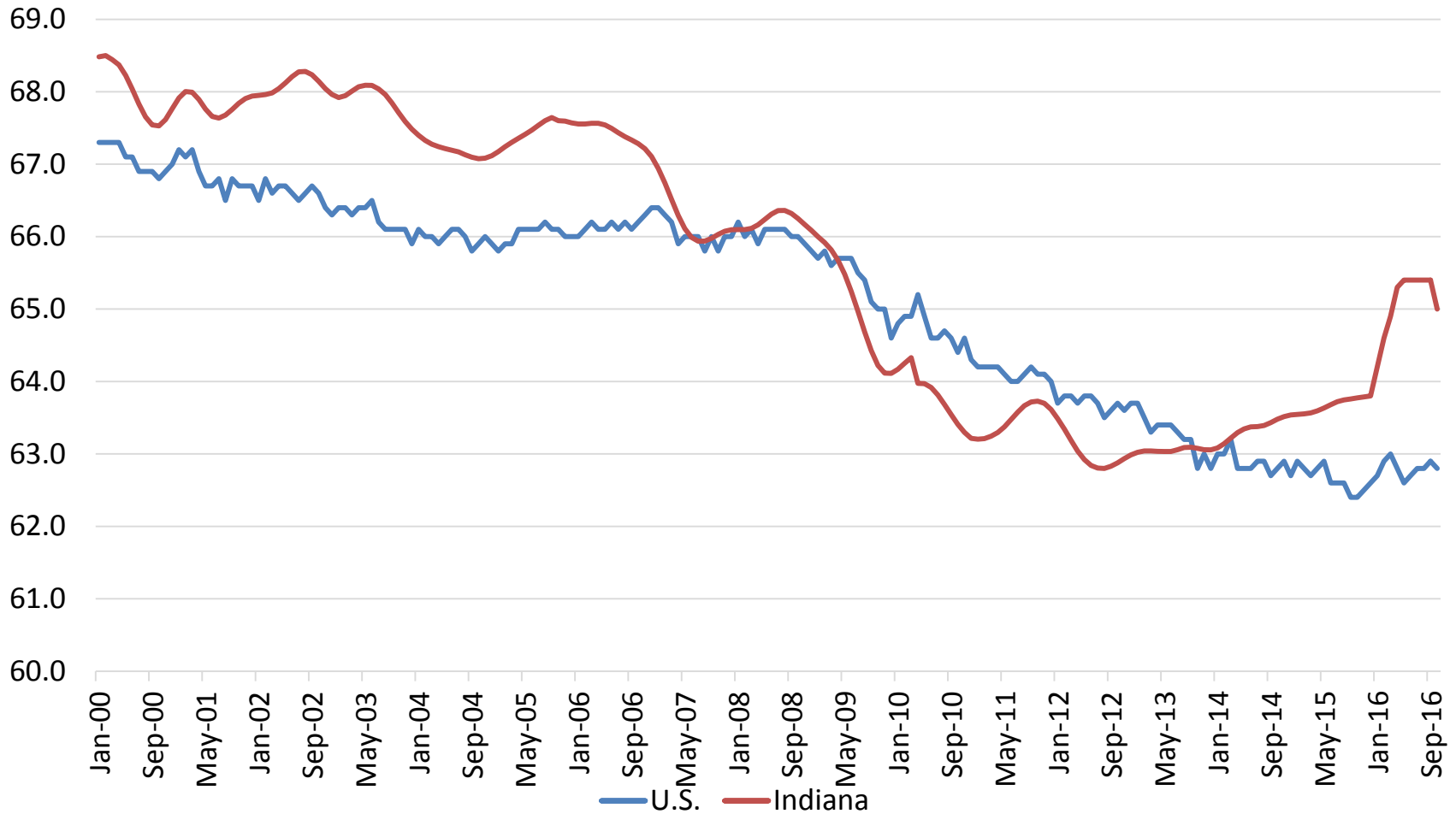
**Private Sector Job Growth Since the Peak of Employment in Indiana**



Source: Current Employment Statistics, seasonally adjusted



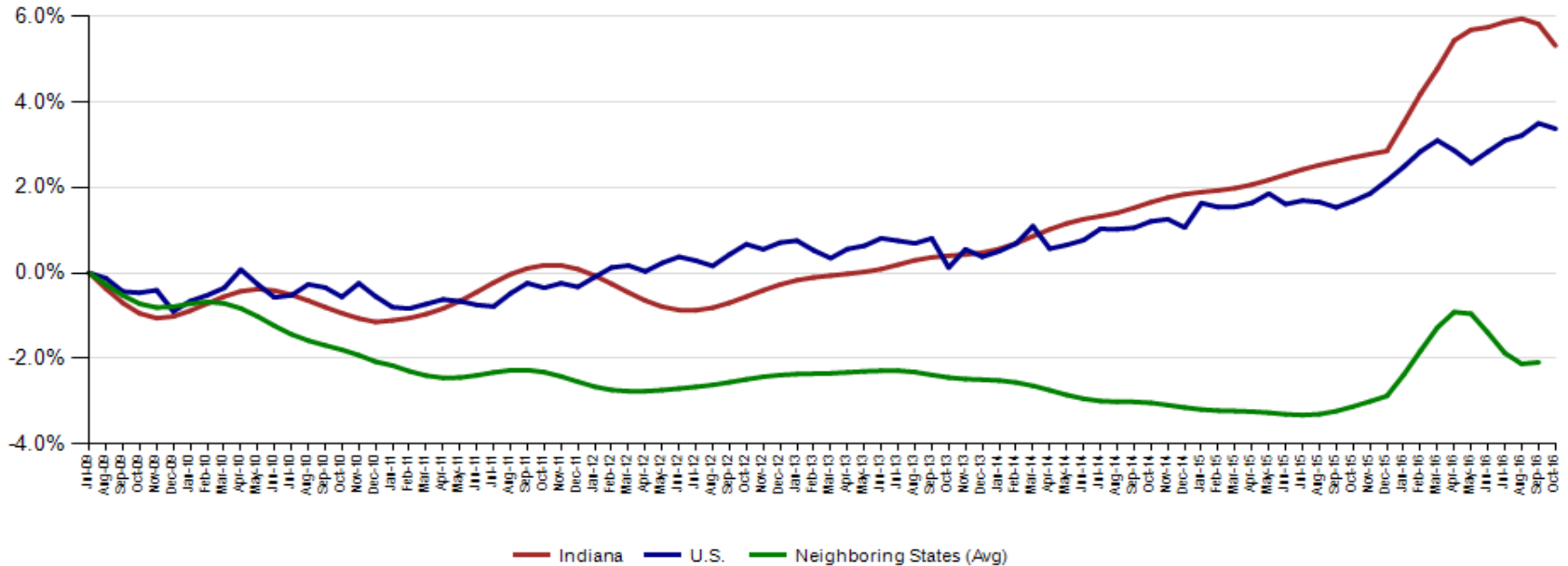
Labor Force lost 16,052 over the month. The Labor Force Participation Rate now stands at 65.0%. The Labor Force is at 83,409 over the year, and 174,888 since January 2013. Indiana's labor force stands at 3,358,100.





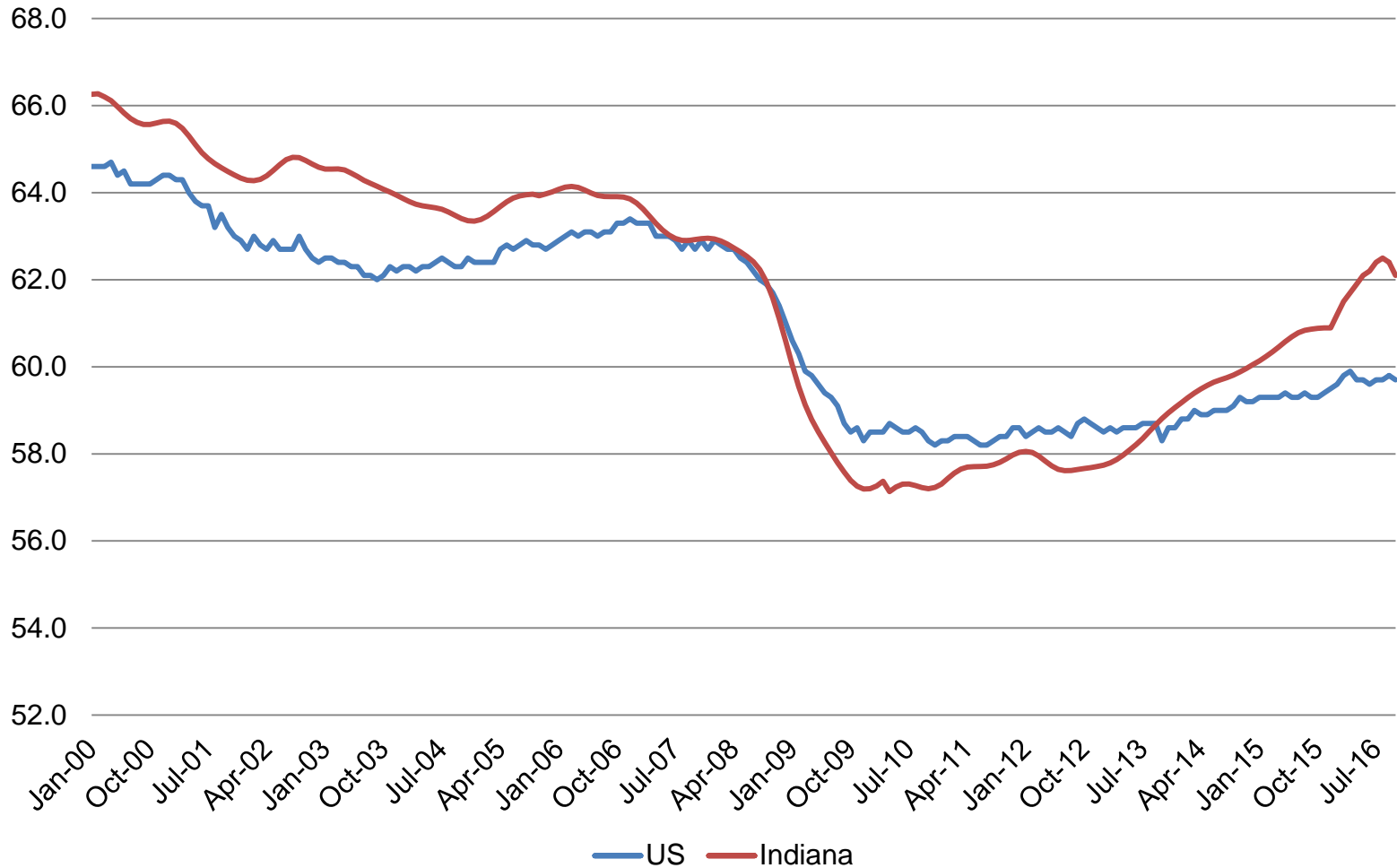
**Indiana's Seasonally Adjusted Labor Force is now at 3,358,100 and the number of employed is at 3,211,922.**

**Labor Force Change Since July 2009 Indiana Trough (seasonally adjusted)**



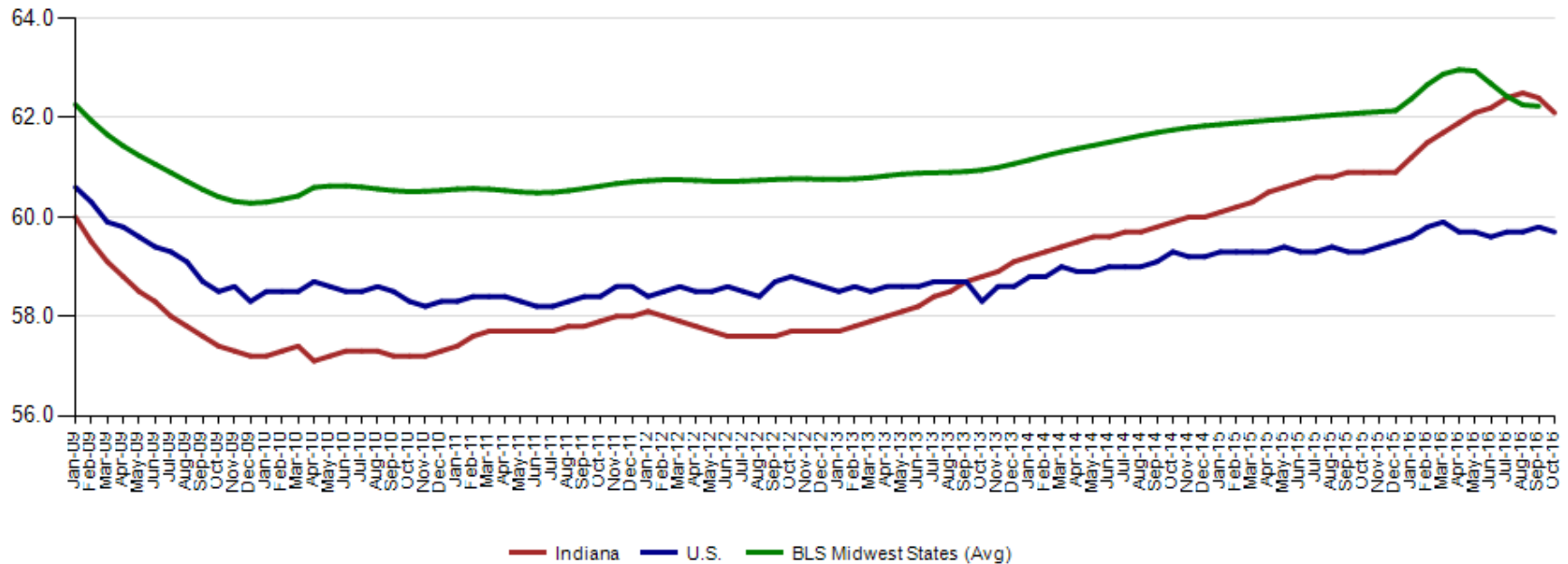


## The October Indiana Employment to Population Ratio stands at 62.1% The U.S. Employment to Population Ratio stands at 59.7%.



Indiana's Employment to Population October rate of 62.1% has been passed by the average for our BLS Regional States 62.2% (September 2016).

**Employment to Population Ratio (seasonally adjusted)**



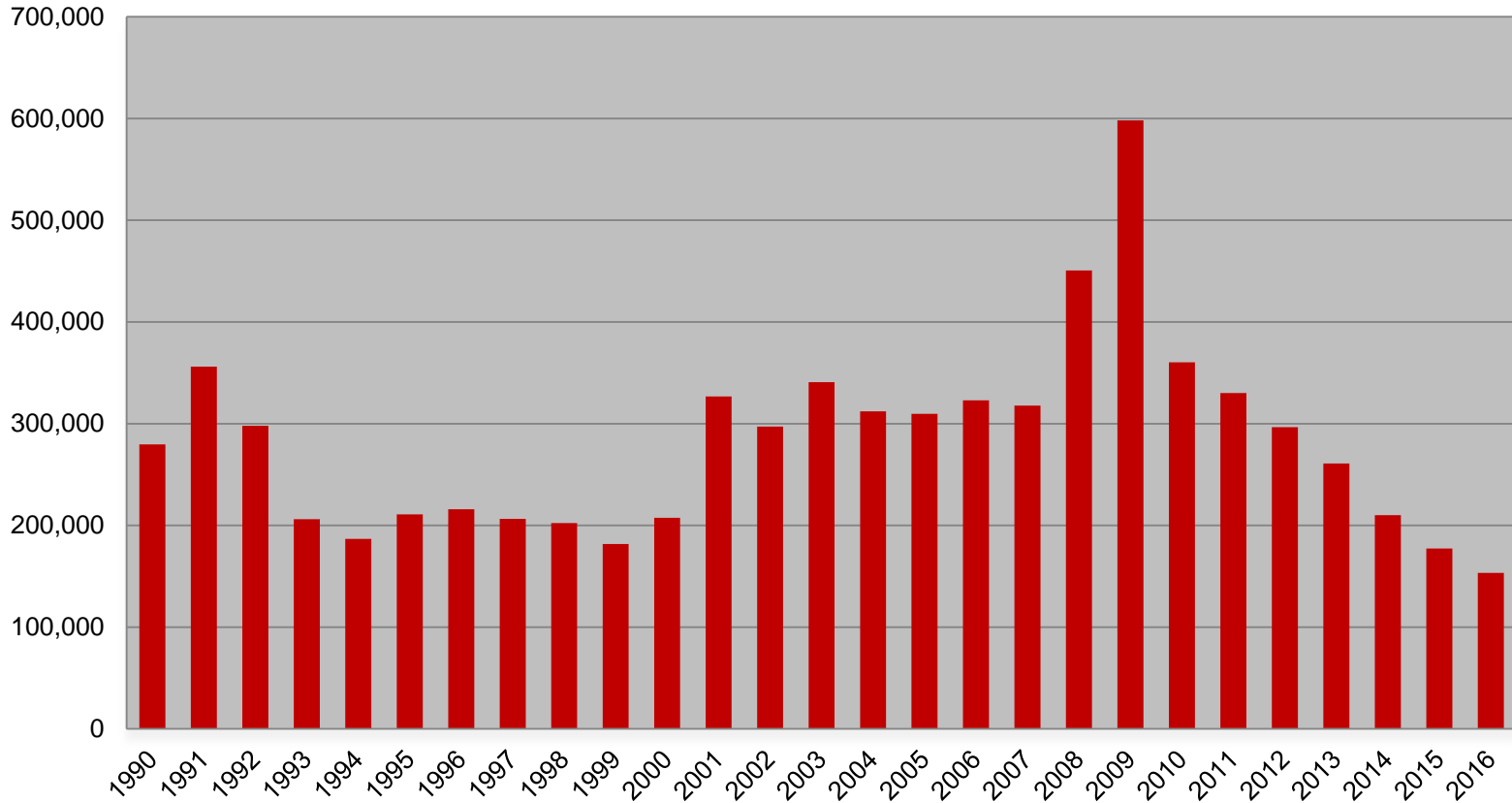


## Midwest Comparison Rates: Seasonally Adjusted Over the Year and Over the Month (confidential and preliminary)

	October 2015	September 2016	October 2016	Monthly change	Yearly change
Indiana	4.5%	4.5%	4.4%	-0.1%	-0.1%
U.S.	5.0%	5.0%	4.9%	-0.1%	-0.1%
Illinois	5.9%	5.5%		-5.5%	-5.9%
Kentucky	5.5%	5.0%	5.1%	0.1%	-0.4%
Michigan	5.1%	4.6%	4.7%	0.1%	-0.4%
Ohio	4.7%	4.8%	4.9%	0.1%	0.2%



## Weekly Initial Claims – 45 weeks aggregate







# Regular UI Claims – Reference Week (12<sup>th</sup> of the month) Input to LAUS Unemployment Rate Model Declines over the month - and over the year

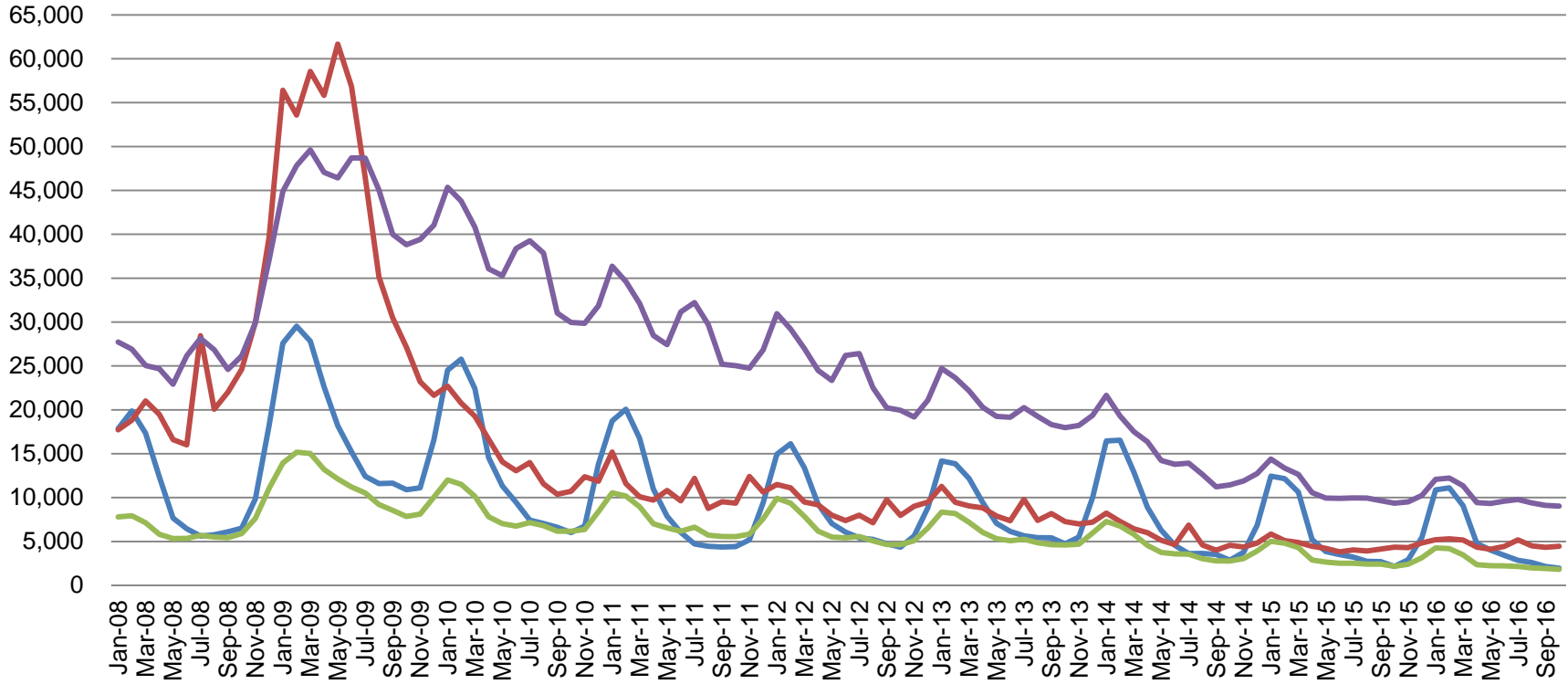
## Without earnings – Reference week claims

	2006	2007	2008	2009	2010	2011	2012	2013	2014	2015	2016	OTM Change	OTY Change
JANUARY	65,898	71,296	75,294	150,888	105,910	84,706	71,042	63,223	49,377	41,333	36,555	10,306	(4,778)
FEBRUARY	67,347	75,432	78,068	154,388	103,432	80,852	69,570	60,183	52,316	39,282	36,909	354	(2,373)
MARCH	59,716	64,936	74,759	157,257	93,469	71,696	60,752	54,578	45,928	35,755	32,439	(4,470)	(3,316)
APRIL	48,103	53,325	64,948	143,842	74,481	59,036	51,652	48,548	39,717	25,597	23,895	(8,544)	(1,702)
MAY	46,779	46,002	55,480	141,174	66,779	54,680	46,328	42,997	32,460	22,807	22,300	(1,595)	(507)
JUNE	45,533	46,350	57,228	136,670	67,996	55,021	46,820	41,722	29,524	22,030	22,025	(275)	(5)
JULY	53,424	51,141	72,032	121,336	69,447	58,031	47,268	44,597	30,845	22,341	22,326	301	(15)
AUGUST	45,021	43,887	61,985	103,509	62,976	51,710	42,134	39,998	26,061	21,472	20,737	(1,589)	(735)
SEPTEMBER	41,247	42,500	61,548	92,680	58,280	46,824	41,955	39,563	23,685	20,941	19,372	(1,365)	(1,569)
OCTOBER	42,487	42,313	67,306	86,275	58,317	46,909	39,467	37,778	23,768	19,917	18,893	(479)	(1,024)
NOVEMBER	43,868	45,362	81,466	82,451	58,846	51,201	41,018	38,517	25,315	21,199			
DECEMBER	53,566	54,201	109,651	91,814	65,279	55,104	46,371	42,484	30,982	26,249			



# Regular UI Claims by Industry

For the Reference Week of Each Month



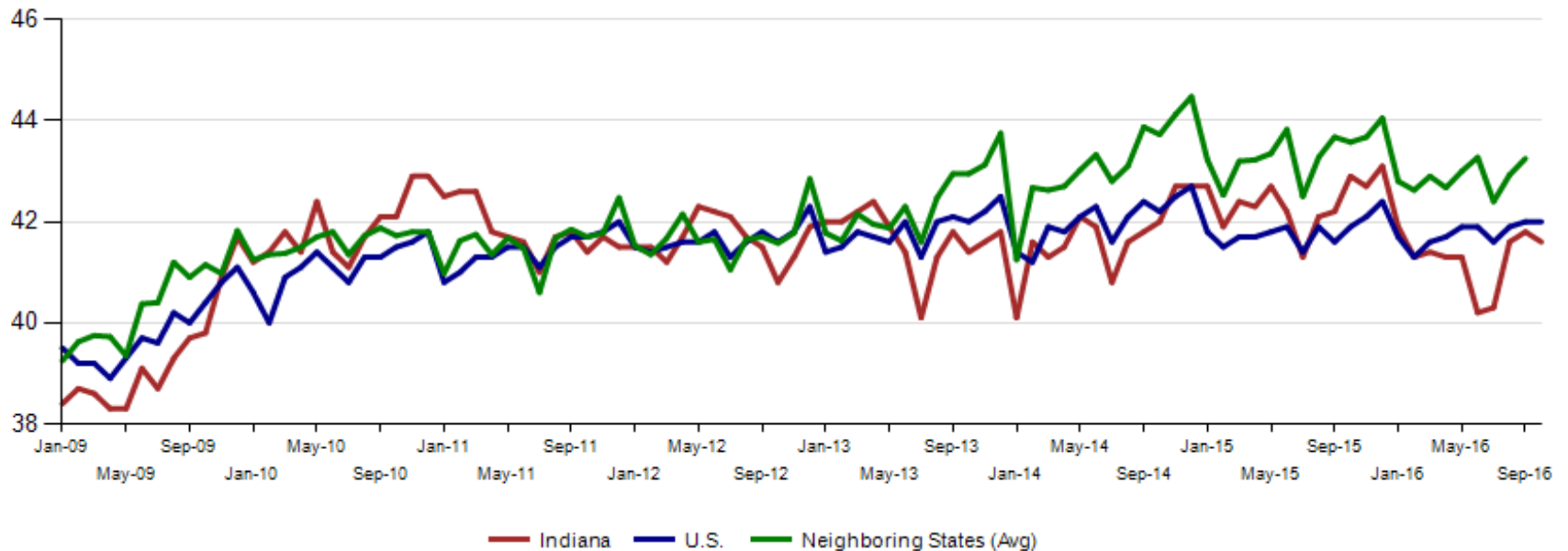
Source: ETA 203

— Construction — Manufacturing — Admin. and Support — All Other



Average weekly hours for Indiana manufacturing fell by 0.2 hours to 41.6 in October 2016. Nationally, manufacturing weekly hours remained at 42.0. This is the seventh month in a row that the National average weekly hours was higher than Indiana. Neighboring states were at 42.2 hours per (September data).

**Avg. Weekly Manufacturing Production Hours (non seasonally adjusted)**





Internal Indiana Career Connect job orders are 69,535 in October. Retail Trade, Health Care & Social Services, and Administrative & Support & Waste Management & Remediation Services (this includes temp help services) as usual lead the way. Retail job postings are in anticipation of needed seasonal help for the holidays.

NAICS_title	Oct-2016	Prior Year			Current Year			Change over Prior Year			Current Year Including External		
	August	September	October	August	September	October	August	September	October	August	September	October	
<b>Total</b>	<b>7,394</b>	<b>8,115</b>	<b>8,586</b>	<b>10,109</b>	<b>8,637</b>	<b>9,354</b>	<b>37%</b>	<b>6%</b>	<b>9%</b>	<b>65,770</b>	<b>63,530</b>	<b>69,535</b>	
<b>Retail Trade</b>	708	729	757	911	721	937	29%	-1%	24%	9,331	9,586	10,911	
<b>Health Care and Social Services</b>	1,465	1,615	1,947	2,118	1,681	1,985	45%	4%	2%	14,563	10,303	10,526	
<b>Admin. &amp; Support &amp; Waste Mgt. &amp; Rem. Services</b>	955	915	1,138	1,244	1,261	1,263	30%	38%	11%	8,143	8,529	8,898	
<b>Accommodation and Food Services</b>	179	142	255	654	292	308	265%	106%	21%	4,673	5,001	8,361	
<b>Transportation &amp; Warehousing</b>	359	391	427	440	425	418	23%	9%	-2%	4,701	7,760	7,072	
<b>Manufacturing</b>	1,254	1,734	1,515	1,698	1,543	1,639	35%	-11%	8%	4,958	4,448	4,535	
<b>Professional, Scientific, and Technical Services</b>	579	672	659	698	680	664	21%	1%	1%	3,723	3,496	3,805	
<b>Educational Services</b>	135	129	189	663	611	582	391%	374%	208%	3,210	2,787	2,489	
<b>Finance and Insurance</b>	358	232	232	270	206	253	-25%	-11%	9%	2,952	2,478	2,446	
<b>Wholesale Trade</b>	434	467	432	390	322	438	-10%	-31%	1%	2,574	2,262	1,883	
<b>Public Administration</b>	153	186	163	153	106	107	0%	-43%	-34%	993	914	1,850	
<b>Real Estate and Rental and Leasing</b>	70	115	98	102	97	111	46%	-16%	13%	1,126	1,347	1,831	
<b>Information</b>	167	298	284	275	235	224	65%	-21%	-21%	1,629	1,505	1,622	
<b>Other Services(Except Public Administration)</b>	216	183	159	171	168	174	-21%	-8%	9%	1,247	1,355	1,382	
<b>Management of Companies and Enterprises</b>	16	14	26	10	11	6	-38%	-21%	-77%	844	755	996	
<b>Construction</b>	212	157	152	147	128	132	-31%	-18%	-13%	572	513	475	
<b>Arts, Entertainment, and Recreation</b>	31	32	16	23	20	17	-26%	-38%	6%	155	197	220	
<b>Utilities</b>	64	65	96	102	107	70	59%	65%	-27%	265	219	174	
<b>Agriculture, Forestry, Fishing and Hunting</b>	23	16	28	18	11	19	-22%	-31%	-32%	59	39	37	
<b>Mining</b>	9	13	3	18	10	4	100%	-23%	33%	48	34	19	
<b>Unallocated</b>	7	10	10	4	2	3	-43%	-80%	-70%	4	2	3	



# Indiana University Kelley School of Business 2017 Economic Forecast

INDIANA  
**WORKFORCE**  
DEVELOPMENT  
AND ITS **WorkOne** CENTERS

Indiana will close out 2016 with real economic growth of 3%, and in 2017 we expect 2.8% real GDP growth for the State

+109,600 jobs this year (CES, September 2016)

Forecasting an additional 45,000 workers added to Indiana payrolls in 2017

Positive employment will lead to continued housing market expansion in 2017

On par with 2016, new single family housing starts are expected to increase about 9% in 2017