



INDIANA
WORKFORCE
DEVELOPMENT
AND ITS **WorkOne** CENTERS

Indiana's Employment and Labor Force Estimates October 2014

11/18/2014



Indiana Employment Change Over the Month, Year-to-Date and Over the Year, S.A.

Industry	October 2013	December 2013	September 2014	October 2014	Month Change	Y-to-D Change	Y-to-Y Change
Private Educational & Health Services	443.2	443.0	443.1	444.3	1.2	1.3	1.1
..... <i>Private Educational Services</i>	69.8	70.5	71.5	72.0	0.5	1.5	2.2
..... <i>Health Care & Social Assistance</i>	373.4	372.5	371.6	372.3	0.7	-0.2	-1.1
Manufacturing	496.0	497.7	517.6	520.1	2.5	22.4	24.1
Professional & Business Services	312.5	316.1	317.0	314.8	-2.2	-1.3	2.3
Financial Activities	129.6	130.4	130.5	130.7	0.2	0.3	1.1
Construction	123.5	125.0	127.9	127.0	-0.9	2.0	3.5
Leisure and Hospitality	292.5	294.0	296.2	297.4	1.2	3.4	4.9
Trade, Transportation & Utilities	570.6	573.6	571.6	574.9	3.3	1.3	4.3
..... <i>Trade</i>	435.3	437.3	435.7	436.6	0.9	-0.7	1.3
..... <i>Transportation, Warehousing & Utilities</i>	135.3	136.3	135.9	138.3	2.4	2.0	3.0
All Other	162.1	163.1	165.5	165.7	0.2	2.6	3.6
Total Private	2,530.0	2,542.9	2,569.4	2,574.9	5.5	32.0	44.9
Government (Includes Public Schools & Hospitals)	424.1	422.3	427.0	428.8	1.8	6.5	4.7
Total Nonfarm	2,954.1	2,965.2	2,996.4	3,003.7	7.3	38.5	49.6
United States Total Private	115,183.0	115,541.0	117,557.0	117,766.0	209.0	2,225.0	2,583.0

Source: Current Employment Statistics, seasonally adjusted



Indiana Statewide Seasonally Adjusted Estimates -- October 2014

Supersector	Private Empl. Peak March 2000	Private Empl. Trough July 2009	September 2014	October 2014	Change Since Peak	Change Since Trough	Month to Month Change
Private Educational & Health Services	330.1	415.3	443.1	444.3	114.2	29.0	1.2
.....Private Educational Services	52.2	67.5	71.5	72.0	19.8	4.5	0.5
.....Health Care & Social Assistance	277.9	347.8	371.6	372.3	94.4	24.5	0.7
Manufacturing	671.1	427.9	517.6	520.1	-151.0	92.2	2.5
Professional & Business Services	260.5	255.9	317.0	314.8	54.3	58.9	-2.2
Financial Activities	145.7	130.7	130.5	130.7	-15.0	0.0	0.2
Construction	154.1	116.5	127.9	127.0	-27.1	10.5	-0.9
Leisure and Hospitality	267.2	276.8	296.2	297.4	30.2	20.6	1.2
Trade, Transportation & Utilities	617.5	545.7	571.6	574.9	-42.6	29.2	3.3
.....Trade	485.1	421.6	435.7	436.6	-48.5	15.0	0.9
.....Transportation, Warehousing & Utilities	132.4	124.1	135.9	138.3	5.9	14.2	2.4
All Other	166.4	158.6	165.5	165.7	-0.7	7.1	0.2
Total Private	2,612.6	2,327.4	2,569.4	2,574.9	-37.7	247.5	5.5
Government (Includes Public Schools & Hospitals)	404.6	434.5	427.0	428.8	24.2	-5.7	1.8
Total Nonfarm	3,017.2	2,761.9	2,996.4	3,003.7	-13.5	241.8	7.3
United States Total Private	110,873.0	108,096.0	117,557.0	117,766.0	6,893.0	9,670.0	209.0

Source: Current Employment Statistics, seasonally adjusted



Indiana Statewide Seasonally Adjusted Estimates -- October 2014

Supersector	Private Empl. Peak March 2000	Private Empl. Trough July 2009	September 2014	October 2014	% Chg. Since Peak	% Chg. Since Trough	% Month to Month Change
Private Educational & Health Services	330.1	415.3	443.1	444.3	34.6%	7.0%	0.3%
..... <i>Private Educational Services</i>	52.2	67.5	71.5	72.0	37.9%	6.7%	0.7%
..... <i>Health Care & Social Assistance</i>	277.9	347.8	371.6	372.3	34.0%	7.0%	0.2%
Manufacturing	671.1	427.9	517.6	520.1	-22.5%	21.5%	0.5%
Professional & Business Services	260.5	255.9	317.0	314.8	20.8%	23.0%	-0.7%
Financial Activities	145.7	130.7	130.5	130.7	-10.3%	0.0%	0.2%
Construction	154.1	116.5	127.9	127.0	-17.6%	9.0%	-0.7%
Leisure and Hospitality	267.2	276.8	296.2	297.4	11.3%	7.4%	0.4%
Trade, Transportation & Utilities	617.5	545.7	571.6	574.9	-6.9%	5.4%	0.6%
..... <i>Trade</i>	485.1	421.6	435.7	436.6	-10.0%	3.6%	0.2%
..... <i>Transportation, Warehousing & Utilities</i>	132.4	124.1	135.9	138.3	4.5%	11.4%	1.8%
All Other	166.4	158.6	165.5	165.7	-0.4%	4.5%	0.1%
Total Private	2,612.6	2,327.4	2,569.4	2,574.9	-1.4%	10.6%	0.2%
Government (Includes Public Schools & Hospitals)	404.6	434.5	427.0	428.8	6.0%	-1.3%	0.4%
Total Nonfarm	3,017.2	2,761.9	2,996.4	3,003.7	-0.4%	8.8%	0.2%
United States Total Private	110,873.0	108,096.0	117,557.0	117,766.0	6.2%	8.9%	0.2%



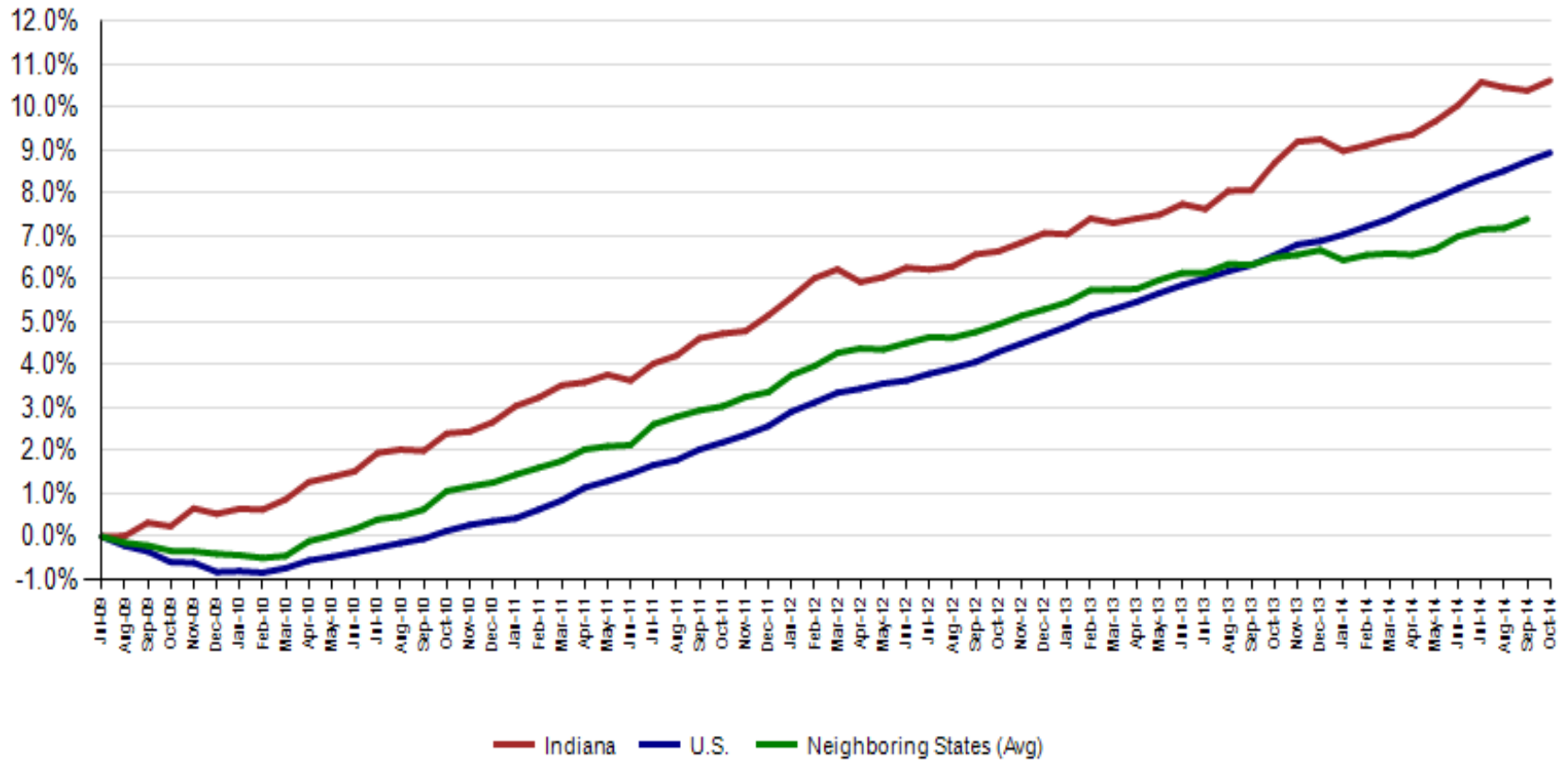
Indiana Employment Change % Compared to U.S.

Industry	Indiana Month to Month	U.S. Month to Month	Indiana vs U.S. Change
Private Educational & Health Services	0.3%	0.2%	OVER
.....Private Educational Services	0.7%	0.4%	OVER
.....Health Care & Social Assistance	0.2%	0.1%	OVER
Manufacturing	0.5%	0.1%	OVER
Professional & Business Services	-0.7%	0.2%	UNDER
Financial Activities	0.2%	0.0%	OVER
Construction	-0.7%	0.2%	UNDER
Leisure and Hospitality	0.4%	0.4%	OVER
Trade, Transportation & Utilities	0.6%	0.2%	OVER
.....Trade	0.2%	0.2%	OVER
.....Transportation, Warehousing & Utils	1.8%	0.3%	OVER
All Other	0.1%	0.0%	OVER
Total Private	0.2%	0.2%	OVER
Government (Includes Public Schools & Hospitals)	0.4%	0.0%	OVER
Total Nonfarm	0.2%	0.2%	OVER

Indiana Year-to-Date	U.S. Year-to-Date	Indiana vs U.S. Change
0.3%	1.9%	UNDER
2.1%	2.3%	UNDER
-0.1%	1.8%	UNDER
4.5%	1.1%	OVER
-0.4%	3.0%	UNDER
0.2%	1.1%	UNDER
1.6%	3.7%	UNDER
1.2%	2.3%	UNDER
0.2%	1.5%	UNDER
-0.2%	1.3%	UNDER
1.5%	2.4%	UNDER
1.6%	1.2%	OVER
1.3%	1.9%	UNDER
1.5%	0.3%	OVER
1.3%	1.7%	UNDER

Indiana Year-to-Year	U.S. Year-to-Year	Indiana vs U.S. Change
0.2%	2.0%	UNDER
3.2%	2.4%	OVER
-0.3%	1.9%	UNDER
4.9%	1.4%	OVER
0.7%	3.5%	UNDER
0.8%	1.1%	UNDER
2.8%	3.9%	UNDER
1.7%	2.6%	UNDER
0.8%	2.0%	UNDER
0.3%	1.8%	UNDER
2.2%	3.1%	UNDER
2.2%	1.1%	OVER
1.8%	2.2%	UNDER
1.1%	0.3%	OVER
1.7%	1.9%	UNDER

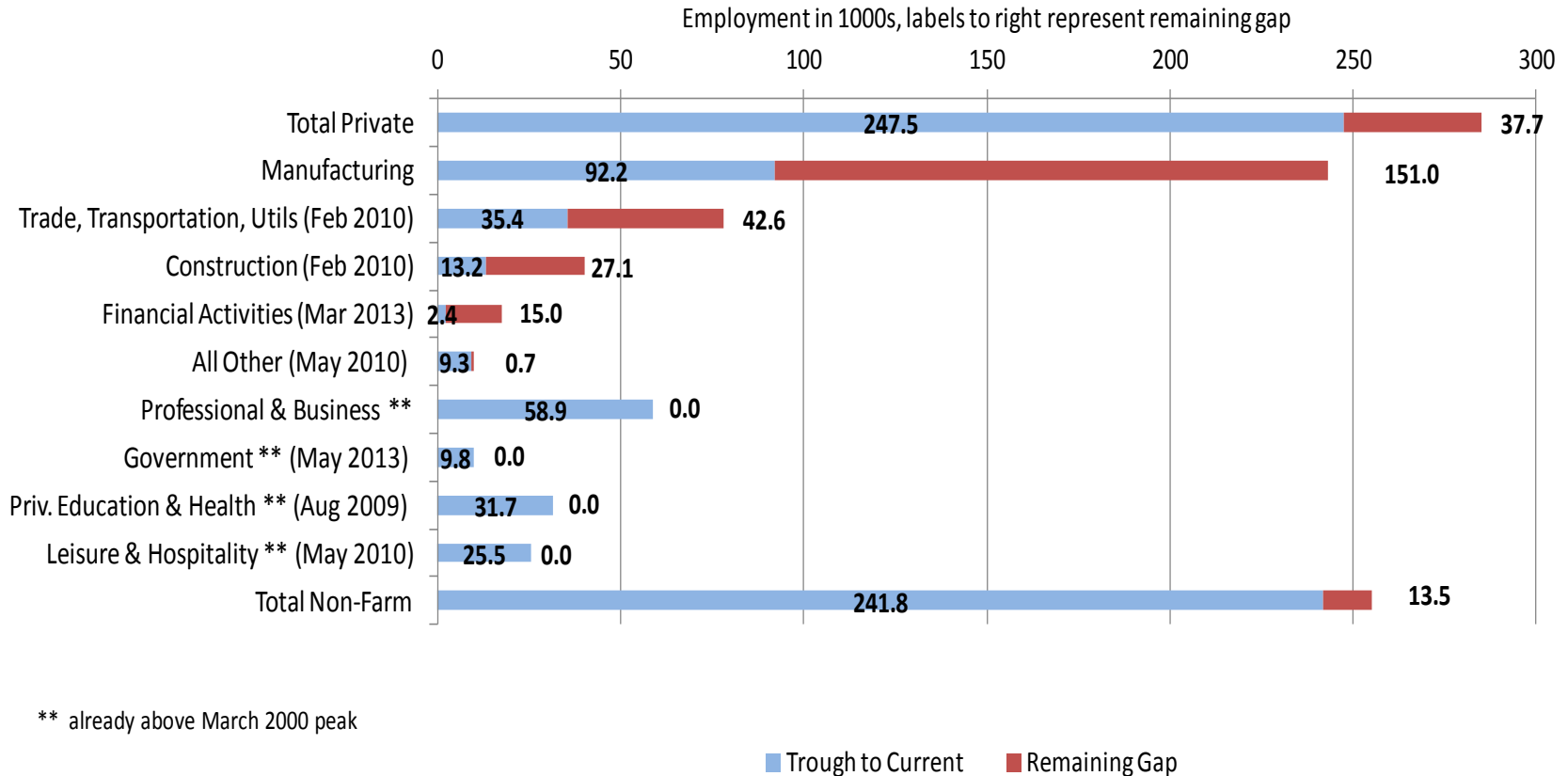
Private Sector Job Growth Since the Low Point of Employment in Indiana



Source: Current Employment Statistics, seasonally adjusted

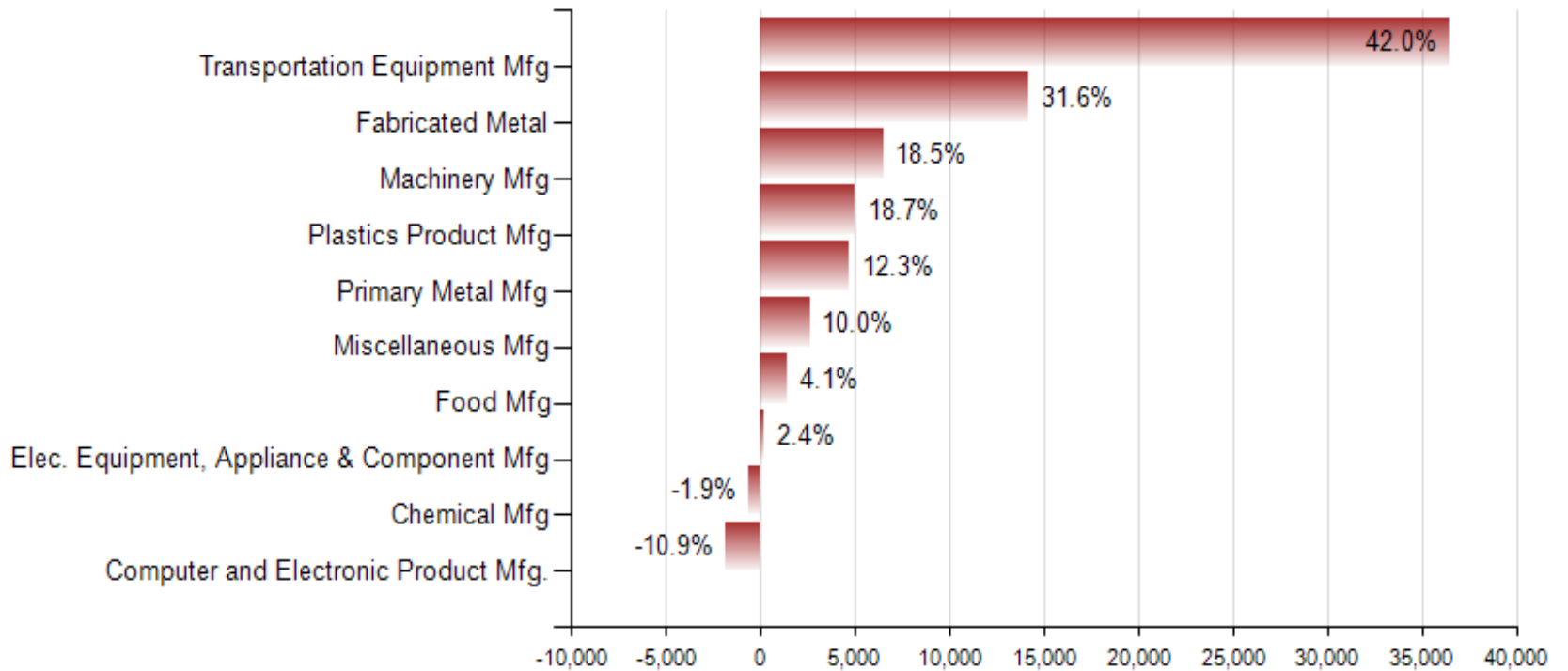


Trough to October 2014 Employment by Supersector, s.a.





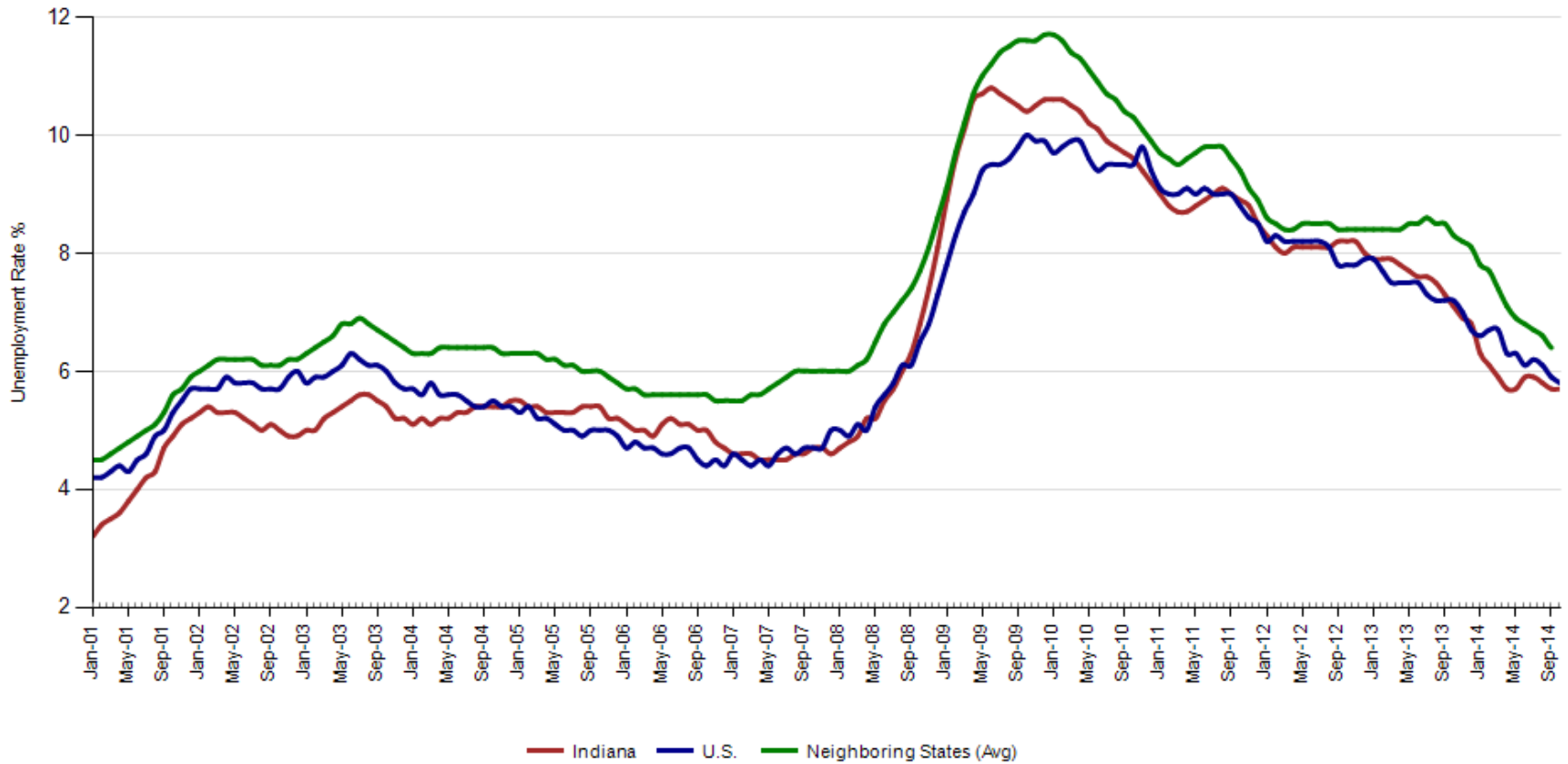
Manufacturing Job Change, Oct 2009 - Oct 2014



Source: Current Employment Statistics, not seasonally adjusted



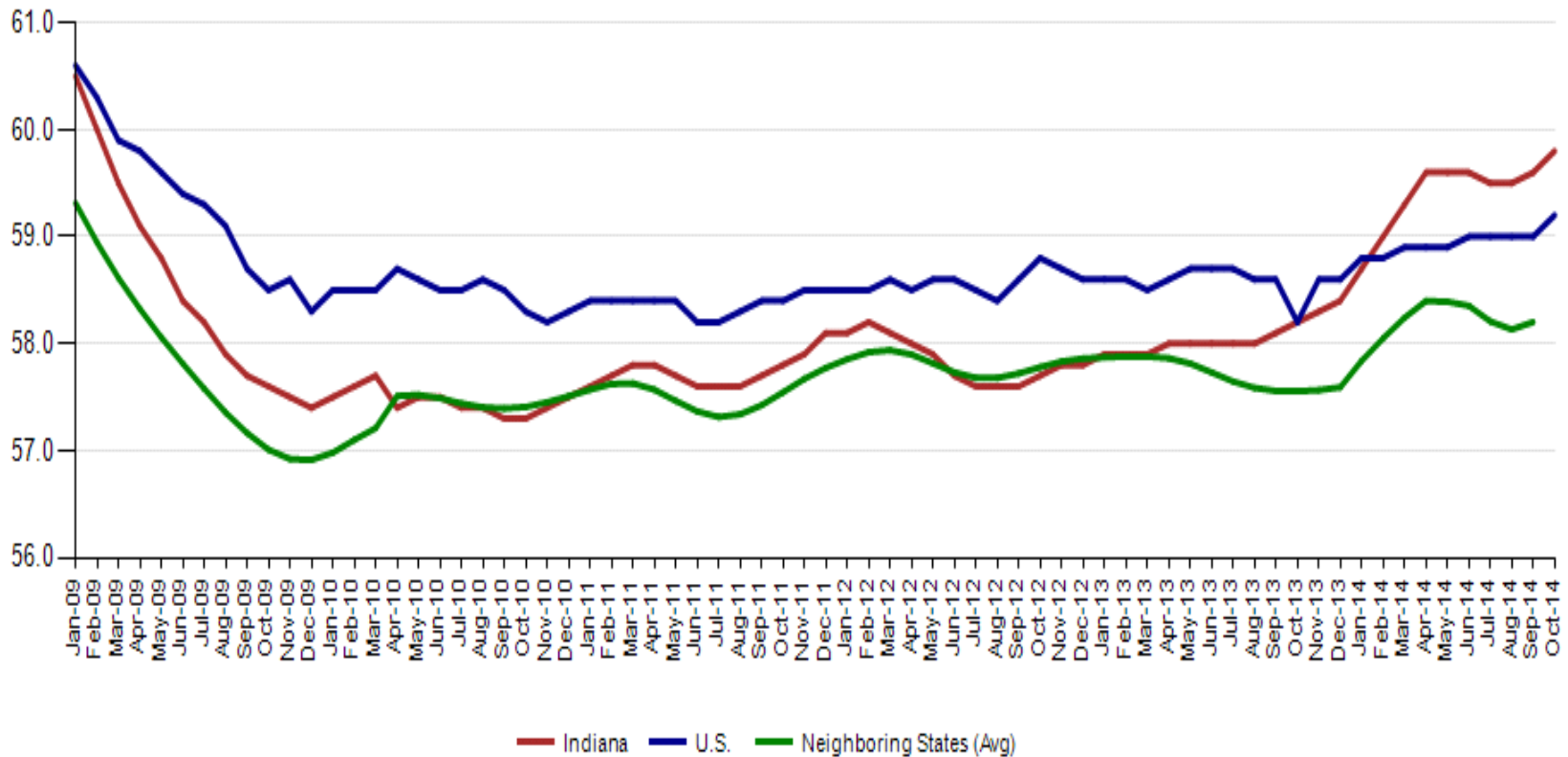
Unemployment Rate, Seasonally Adjusted



Source: Local Area Unemployment Statistics



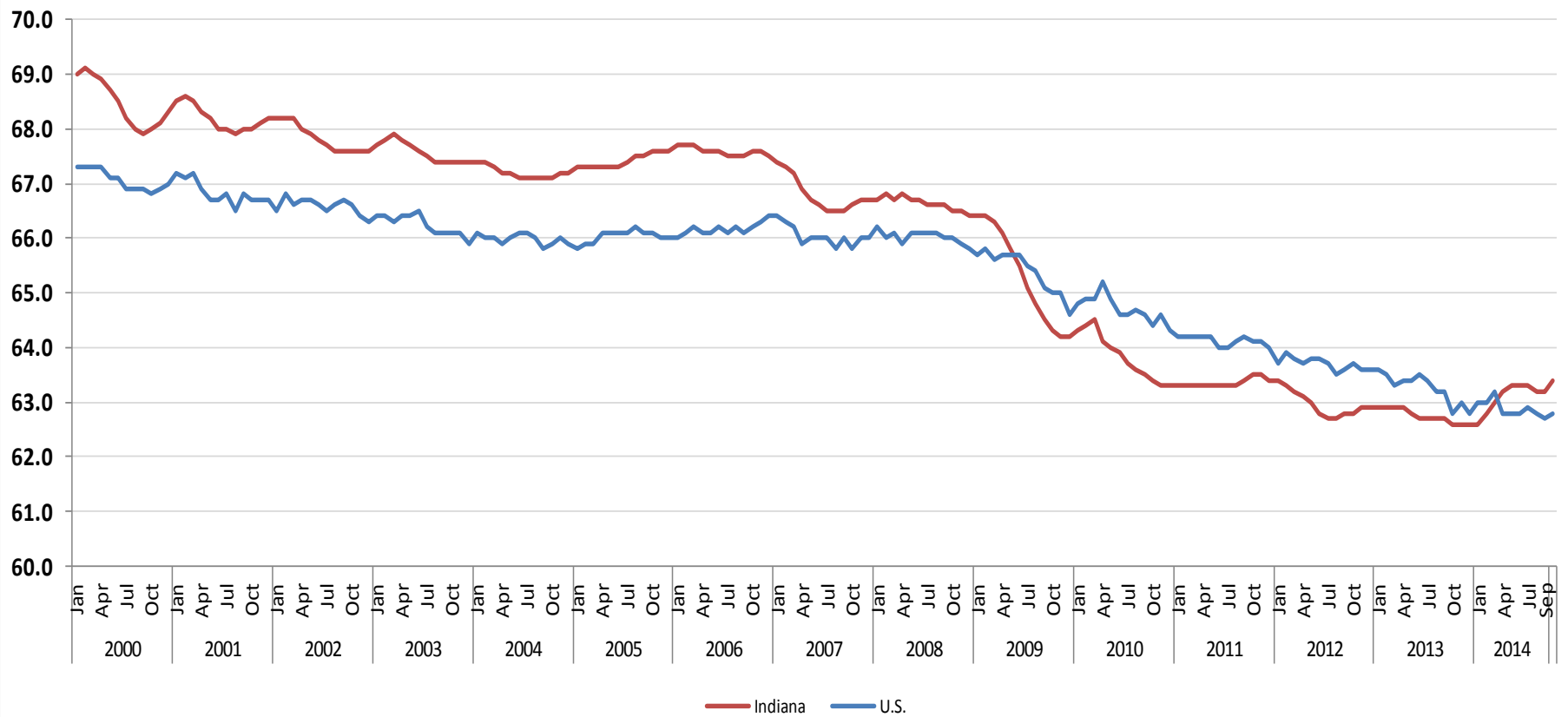
Employment to Population Ratio (Seasonally Adjusted)



Source: Local Area Unemployment Statistics

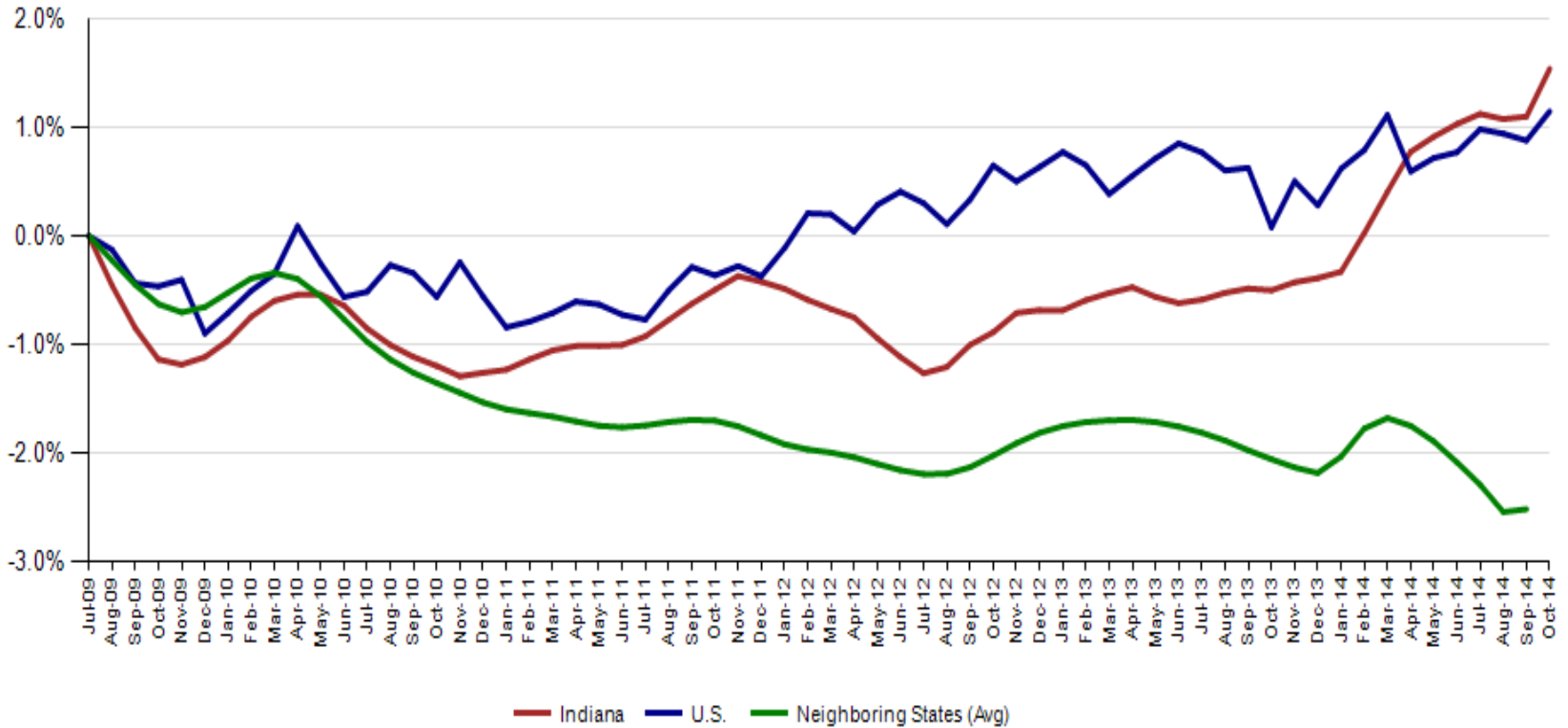


Labor Force Participation, Indiana and the U.S.





Labor Force Change Since July 2009 Indiana Trough, S.A.



Source: Local Area Unemployment Statistics



Labor Force Estimates, IN, U.S. and Other Midwest States Average
Employment, Unemployment & Labor Force, Seasonally Adjusted

Employment	2006		2008		2010		2012		2014	
	Sep	Oct	Sep	Oct	Sep	Oct	Sep	Oct	Sep	Oct
Indiana	3,081,147	3,088,110	3,043,542	3,028,272	2,853,956	2,855,511	2,904,709	2,909,976	3,047,283	3,062,497
<i>Year-to-Year Chg</i>	1.3%	1.3%	-1.0%	-1.6%	0.6%	0.9%	0.5%	0.4%	3.4%	3.6%
U.S. (in 1000s)	144,815	145,314	145,076	144,802	139,393	139,111	142,947	143,369	146,600	147,283
<i>Year-to-Year Chg</i>	1.7%	1.9%	-0.8%	-0.8%	0.4%	0.5%	2.0%	2.2%	1.6%	2.6%
Neighboring States	18,500,113	18,546,243	18,114,877	18,036,888	17,201,059	17,213,902	17,431,054	17,456,792	17,739,445	
<i>Year-to-Year Chg</i>	1.6%	1.6%	-2.1%	-2.6%	0.4%	0.7%	0.9%	0.8%	1.6%	

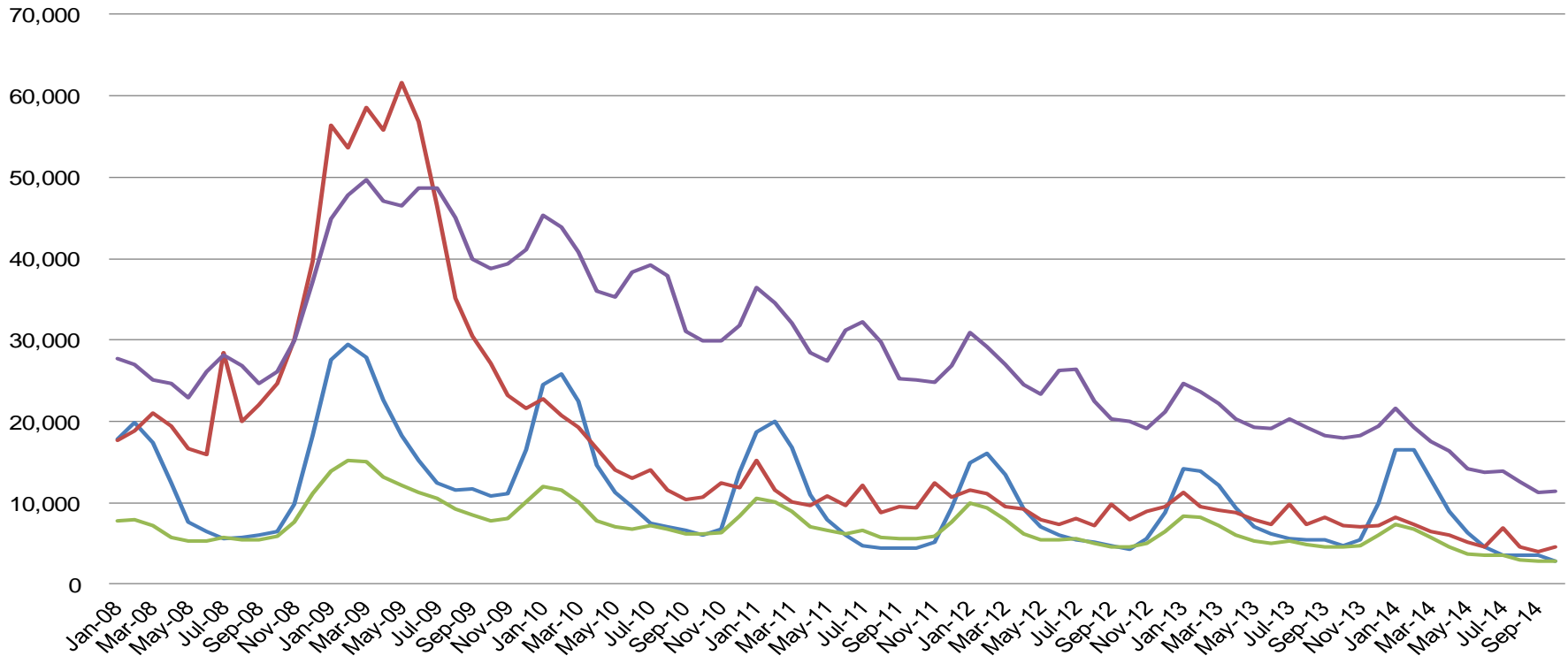
Unemployment	2006		2008		2010		2012		2014	
	Sep	Oct	Sep	Oct	Sep	Oct	Sep	Oct	Sep	Oct
Indiana	163,618	162,044	206,035	220,281	306,983	302,783	259,785	258,236	184,556	183,437
<i>Year-to-Year Chg</i>	-5.5%	-6.3%	38.2%	45.6%	-7.8%	-8.2%	-9.4%	-8.7%	-20.9%	-18.7%
U.S. (in 1000s)	6,847	6,727	9,494	10,074	14,578	14,520	12,070	12,138	9,262	8,995
<i>Year-to-Year Chg</i>	-9.3%	-9.7%	32.4%	39.2%	-2.9%	-5.4%	-13.2%	-10.8%	-17.3%	-19.3%
Neighboring States	1,096,856	1,093,403	1,454,097	1,506,189	2,006,065	1,974,825	1,606,426	1,601,467	1,222,762	
<i>Year-to-Year Chg</i>	-5.9%	-5.6%	23.1%	27.0%	-10.5%	-12.0%	-12.9%	-11.0%	-24.2%	

Labor Force	2006		2008		2010		2012		2014	
	Sep	Oct	Sep	Oct	Sep	Oct	Sep	Oct	Sep	Oct
Indiana	3,244,765	3,250,154	3,249,577	3,248,553	3,160,939	3,158,294	3,164,494	3,168,212	3,231,839	3,245,934
<i>Year-to-Year Chg</i>	0.9%	0.9%	0.8%	0.6%	-0.3%	-0.1%	-0.4%	-0.4%	1.6%	2.1%
U.S. (in 1000s)	151,662	152,041	154,570	154,876	153,971	153,631	155,018	155,507	155,862	156,278
<i>Year-to-Year Chg</i>	1.1%	1.4%	0.8%	1.1%	0.1%	-0.1%	0.6%	1.0%	0.3%	1.1%
Neighboring States	19,596,969	19,639,646	19,568,974	19,543,077	19,207,124	19,188,727	19,037,480	19,058,259	18,962,207	
<i>Year-to-Year Chg</i>	1.1%	1.2%	-0.6%	-0.8%	-0.8%	-0.7%	-0.4%	-0.3%	-0.6%	



Regular UI Claims by Industry

For the Reference Week of Each Month



Source: ETA 203

Construction Manufacturing Admin. and Support All Other



CES LAUS Point in Time Comparison

	March 2000 (Peak)	July 2009 (Trough)	September 2014	October 2014	Change Peak	Change Trough	Change Prev. Month
CES Employed	3,017.2	2,761.9	2,996.4	3,003.7	-13.5	241.8	7.3
LAUS Employed	3,076.1	2,854.4	3,047.3	3,062.5	-13.6	208.1	15.2
LAUS Unemployed	89.6	342.3	184.6	183.4	93.8	-158.8	-1.1
Labor Force	3,165.7	3,196.6	3,231.8	3,245.9	80.3	49.3	14.1
Unemployment Rate	2.8	10.7	5.7	5.7	2.9	-5.0	0.0

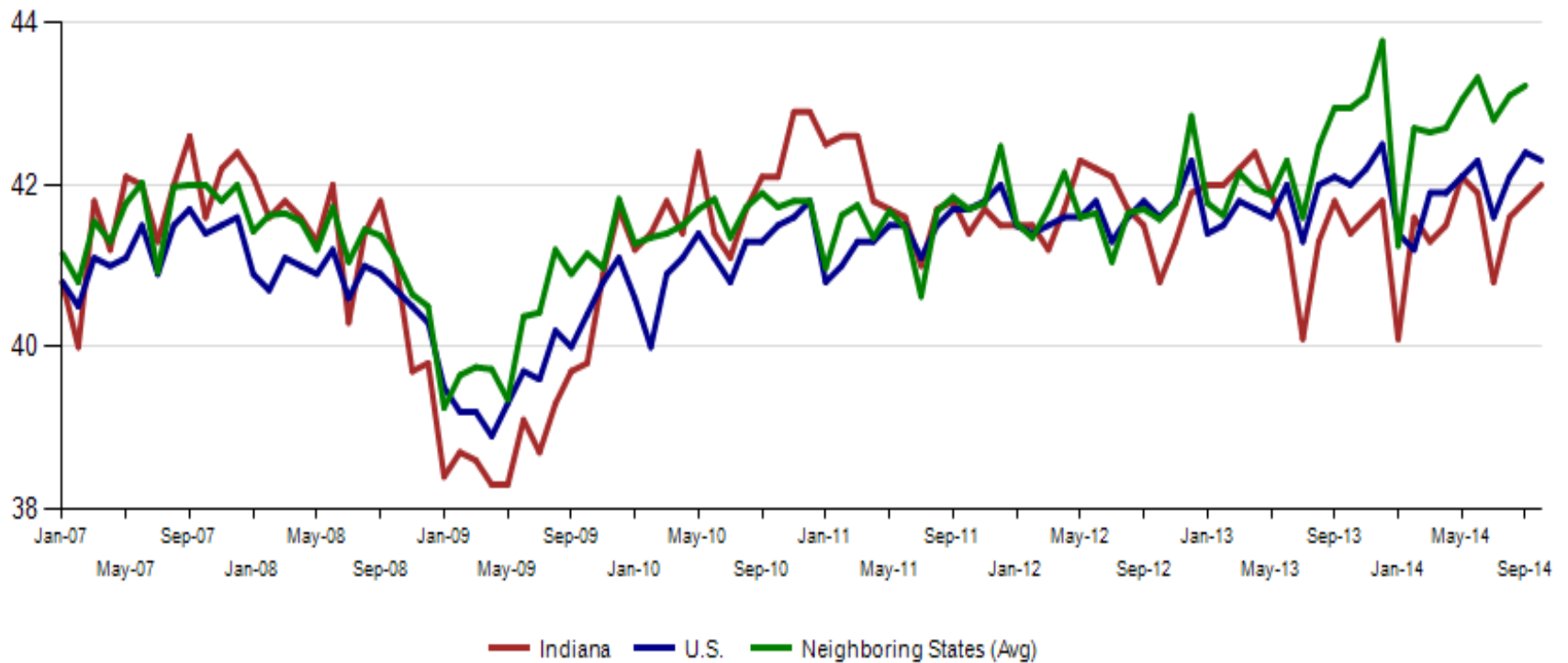
(LAUS components may not sum exactly due to rounding.)



Additional Reference/Background Material



Avg. Weekly Manufacturing Production Hours, Non Seasonally Adjusted



Source: Current Employment Statistics, not seasonally adjusted



Revisions to September 2014 Estimates

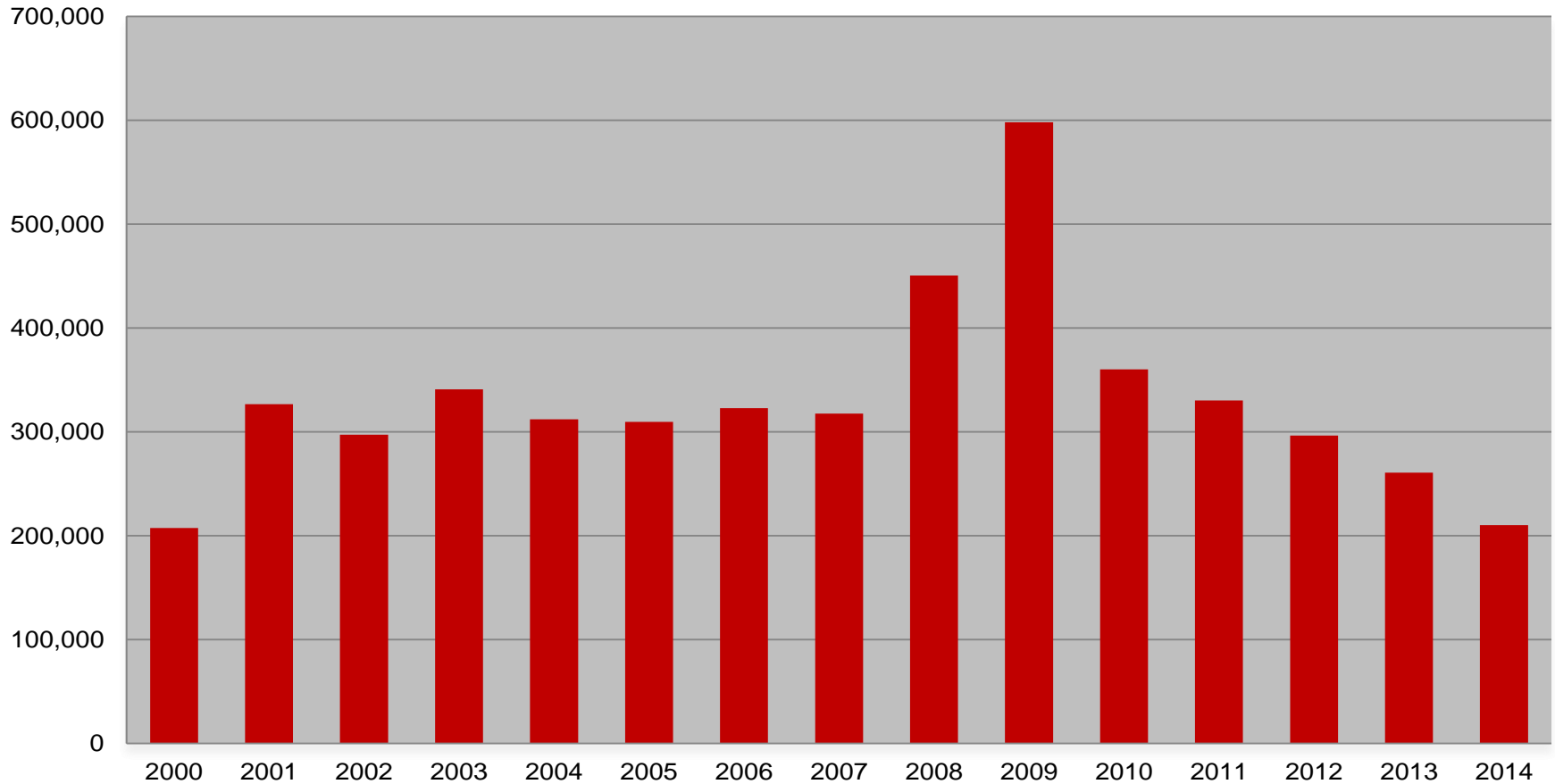
INDUSTRY TITLE	Aug	Sep Prel	Sep Rev	Revision	Prel	
					Chg from Aug	Chg from Aug
Total Nonfarm	2999.6	2994	2994.6	0.6	-5.0	-5.6
Total Private	2571.1	2569.2	2569.4	0.2	-1.7	-1.9
Manufacturing	512.3	518.2	517.6	-0.6	5.3	5.9
Leisure and Hospitality	299.2	295.4	296.2	0.8	-3.0	-3.8

Source: Current Employment Statistics, s.a.



Aggregate Weekly Initial Claims (total initial claims year-to-date, 45 weeks)

Aggregate claims for 2014 are the lowest since 2000 (210,158 vs. 207,507).





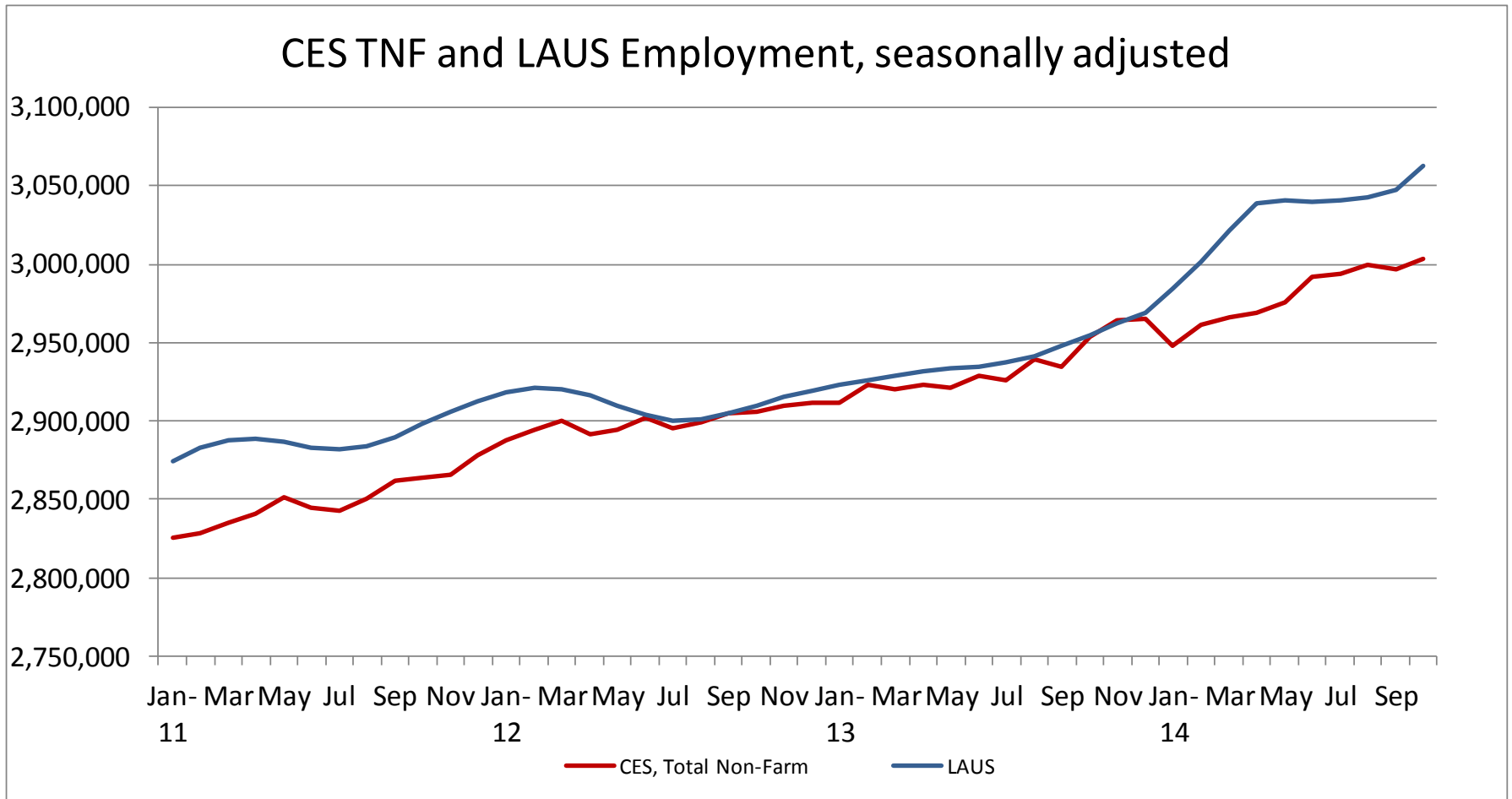
Without earnings – Reference week claims

	2006	2007	2008	2009	2010	2012	2013	2014	OTM Change	OTY Change
JANUARY	65,898	71,296	75,294	150,888	105,910	71,042	63,223	49,377	6,893	-13,846
FEBRUARY	67,347	75,432	78,068	154,388	103,432	69,570	60,183	52,316	2,939	-7,867
MARCH	59,716	64,936	74,759	157,257	93,469	60,752	54,578	45,928	(6,388)	-8,650
APRIL	48,103	53,325	64,948	143,842	74,481	51,652	48,548	39,717	(6,211)	-8,831
MAY	46,779	46,002	55,480	141,174	66,779	46,328	42,997	32,460	(7,257)	-10,537
JUNE	45,533	46,350	57,228	136,670	67,996	46,820	41,722	29,524	(2,936)	-12,198
JULY	53,424	51,141	72,032	121,336	69,447	47,268	44,597	30,845	1,321	-13,752
AUGUST	45,021	43,887	61,985	103,509	62,976	42,134	39,998	26,061	(4,784)	-13,937
SEPTEMBER	41,247	42,500	61,548	92,680	58,280	41,955	39,563	23,685	(2,376)	-15,878
OCTOBER	42,487	42,313	67,306	86,275	58,317	39,467	37,778	23,335	(350)	-14,443
NOVEMBER	43,868	45,362	81,466	82,451	58,846	41,018	38,517			
DECEMBER	53,566	54,201	109,651	91,814	65,279	46,371	42,484			



Industry Title	Ownership	Jul-13	Aug-13	Sep-13	3-mo total	Jul-14	Aug-14	Sep-14	3-mo total	Chg	% Chg
Admin. & Support & Waste Mgt. & Rem. Services	All	24,087	27,287	26,841	78,215	23,497	25,170	24,949	73,616	-4,599	-5.9%
Accommodation and Food Services	All	18,930	21,090	17,928	57,948	18,388	19,794	18,606	56,788	-1,160	-2.0%
Retail Trade	All	15,196	19,033	18,970	53,199	18,608	19,681	17,522	55,811	2,612	4.9%
Educational Services	All	6,144	34,141	12,850	53,135	6,753	34,436	12,708	53,897	762	1.4%
Manufacturing	All	12,276	12,719	12,980	37,975	13,772	13,802	13,861	41,435	3,460	9.1%
Health Care and Social Services	All	12,518	11,910	10,788	35,216	11,021	11,866	11,893	34,780	-436	-1.2%
Construction	All	6,877	5,649	6,110	18,636	7,280	6,204	6,641	20,125	1,489	8.0%
Transportation and Warehousing	All	4,788	4,642	4,735	14,165	3,528	4,029	3,817	11,374	-2,791	-19.7%
Professional, Scientific, and Technical Services	All	2,791	2,740	2,912	8,443	3,051	3,417	4,177	10,645	2,202	26.1%
Finance and Insurance	All	2,671	2,301	2,266	7,238	2,522	2,744	4,295	9,561	2,323	32.1%
Wholesale Trade	All	3,305	3,005	2,744	9,054	3,185	3,044	3,309	9,538	484	5.3%
Other Services(Except Public Administration)	All	2,494	3,027	2,753	8,274	2,467	2,814	2,764	8,045	-229	-2.8%
Arts, Entertainment, and Recreation	All	2,089	1,869	1,754	5,712	2,259	2,319	1,384	5,962	250	4.4%
Real Estate and Rental and Leasing	All	2,541	1,865	1,628	6,034	2,309	1,812	1,742	5,863	-171	-2.8%
Public Administration	All	1,426	1,472	1,372	4,270	1,483	1,675	1,552	4,710	440	10.3%
Agriculture, Forestry, Fishing and Hunting	All	988	1,346	1,266	3,600	1,112	770	1,090	2,972	-628	-17.4%
Information	All	818	748	743	2,309	675	697	646	2,018	-291	-12.6%
Total		120,474	155,510	129,313	405,297	123,141	155,522	132,024	410,687	5,390	1.3%

Source: New Hire Reporting System



Source: Current Employment Statistics and Local Area Unemployment Statistics