



INDIANA
WORKFORCE
DEVELOPMENT
AND ITS **WorkOne** CENTERS

Indiana's Employment and Labor Force Estimates November 2016

12/14/2016



Key Points

The Indiana Unemployment Rate is 4.2% in November 2016.

Nationally the rate is 4.6%.

- Indiana's rate has decreased 0.3 over the year from November 2015 and currently is 4.2%.
- Indiana's Labor Force decreased over the month by 13,220 over the month, with a decrease in employment of 6,517 and unemployment decreased by 6,703.
- Indiana's Labor Force increased 43,968 with 55,778 in employment. Unemployment has decreased by 11,810 since the start of 2016.
- Indiana's Labor Force increased 67,327 year to year change (November 2015 – November 2016), and has increased 161,290 since January 2013.
- Indiana's Labor Force Participation rate decreased over the month and is currently 64.7%. This remains above the US Labor Force Participation rate which stands at 62.7%.
- Total private employment stands at 48,300 above the March 2000 Peak
- Private employment is up 168,000 since January 2013.



Key Points

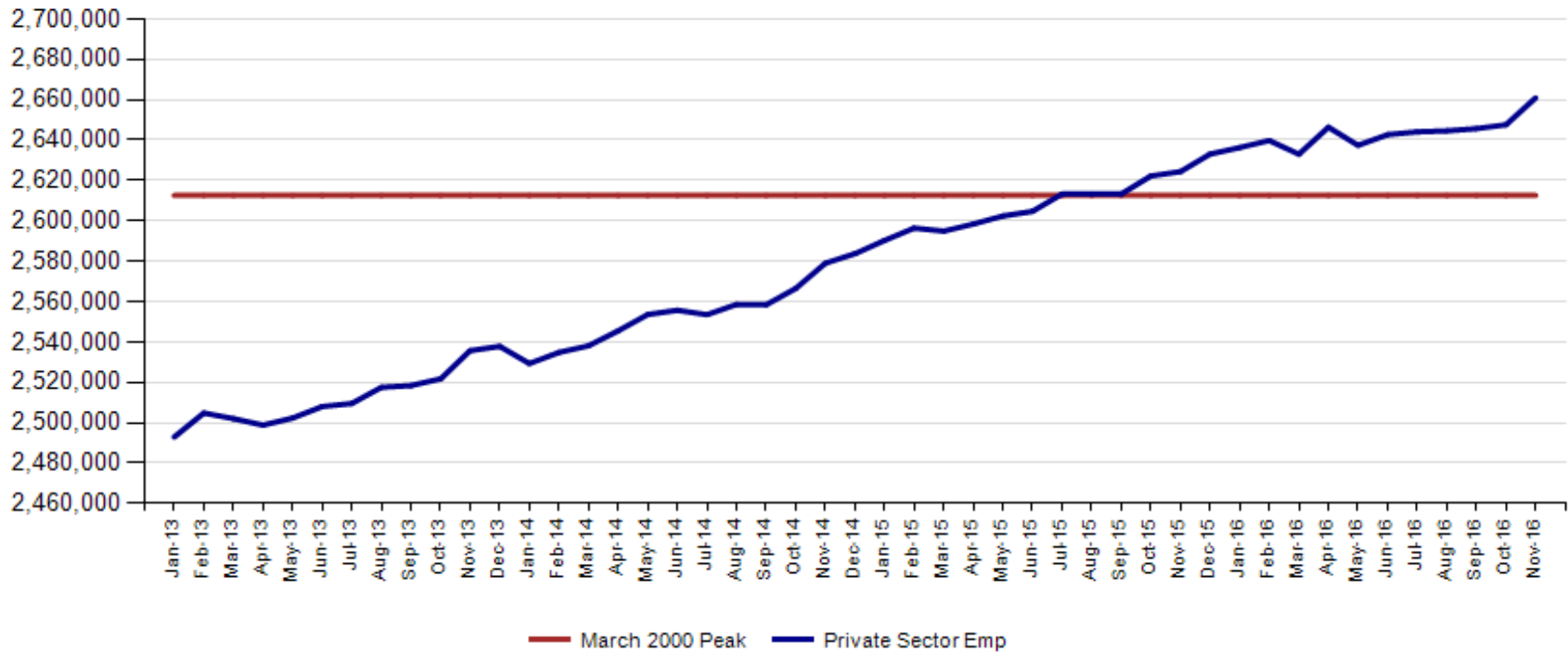
Indiana total private employment increased 13,300 over the month and has gains of 36,500 over the year. **This is the 17th month above the prior peak of 2,612,600.**

- **Indiana private employment now stands at 2,660,900.**
- **Professional and Business Services had gains of 8,300**
- **The All Other Category had gains of 1,700.**
- **Financial Activities had gains of 1,500.**
- **Manufacturing had gains 1,400.**
- **Private Education & Health Services had gains of 800.**
- **Trade Transportation & Utilities had gains 200.**
- **Construction had declines of 1,600.**



November Total private employment is now at 48,300 above the March 2000 Peak. This is the 17th month above the prior peak.

Indiana Private Sector Employment





November Indiana private sector employment increased by 13,300 jobs over the month and is up 36,500 over the year. The monthly increase was driven by Professional & Business Services increased 8,300 jobs over the month.

IN Employment Change Over the Month, Year-to-Date and Over the Year (seasonally adjusted)

Industry	November 2015	December 2015	October 2016	November 2016	Month Change	Y-to-D Change	Y-to-Y Change
Private Educational & Health Services	459.7	459.5	473.7	474.5	0.8	15.0	14.8
.....Private Educational Services	74.7	73.2	75.3	74.9	-0.4	1.7	0.2
.....Health Care & Social Assistance	385.0	386.3	398.4	399.6	1.2	13.3	14.6
Manufacturing	520.1	520.2	514.8	516.2	1.4	-4.0	-3.9
Professional & Business Services	327.3	327.9	325.3	333.6	8.3	5.7	6.3
Financial Activities	131.8	131.3	133.5	135.0	1.5	3.7	3.2
Construction	129.0	131.0	131.7	130.1	-1.6	-0.9	1.1
Leisure and Hospitality	303.8	304.6	307.0	308.0	1.0	3.4	4.2
Trade, Transportation & Utilities	586.4	592.9	596.5	596.7	0.2	3.8	10.3
.....Trade	444.8	447.6	454.2	453.3	-0.9	5.7	8.5
.....Transportation, Warehousing & Utilities	141.6	145.3	142.3	143.4	1.1	-1.9	1.8
All Other	166.3	165.7	165.1	166.8	1.7	1.1	0.5
Total Private	2,624.4	2,633.1	2,647.6	2,660.9	13.3	27.8	36.5
Government (Includes Public Schools & Hospitals)	425.6	426.6	428.8	428.6	-0.2	2.0	3.0
Total Nonfarm	3,050.0	3,059.7	3,076.4	3,089.5	13.1	29.8	39.5
United States Total Private	120,847.0	121,106.0	122,727.0	122,883.0	156.0	1,777.0	2,036.0



November Total nonfarm is 72,300 over the March 2000 peak.

IN Statewide Estimates (seasonally adjusted) -- November 2016

Supersector	Private Empl. Peak March 2000	Private Empl. Trough July 2009	October 2016	November 2016	Change Since Peak	Change Since Trough	Month to Month Change
Private Educational & Health Services	330.1	411.1	473.7	474.5	144.4	63.4	0.8
.....Private Educational Services	52.2	63.3	75.3	74.9	22.7	11.6	-0.4
.....Health Care & Social Assistance	277.9	347.8	398.4	399.6	121.7	51.8	1.2
Manufacturing	671.1	427.9	514.8	516.2	-154.9	88.3	1.4
Professional & Business Services	260.5	255.9	325.3	333.6	73.1	77.7	8.3
Financial Activities	145.7	130.7	133.5	135.0	-10.7	4.3	1.5
Construction	154.1	116.5	131.7	130.1	-24.0	13.6	-1.6
Leisure and Hospitality	267.2	276.8	307.0	308.0	40.8	31.2	1.0
Trade, Transportation & Utilities	617.5	545.7	596.5	596.7	-20.8	51.0	0.2
.....Trade	485.1	421.6	454.2	453.3	-31.8	31.7	-0.9
.....Transportation, Warehousing & Utilities	132.4	124.1	142.3	143.4	11.0	19.3	1.1
All Other	166.4	158.6	165.1	166.8	0.4	8.2	1.7
Total Private	2,612.6	2,323.2	2,647.6	2,660.9	48.3	337.7	13.3
Government (Includes Public Schools & Hospitals)	404.6	434.5	428.8	428.6	24.0	-5.9	-0.2
Total Nonfarm	3,017.2	2,757.7	3,076.4	3,089.5	72.3	331.8	13.1
United States Total Private	110,875.0	108,170.0	122,727.0	122,883.0	12,008.0	14,713.0	156.0



Indiana job growth over the year remains under the National trend in private sector gains in November. Private Educational & Health Services, Financial Activities and Trade Transportation and Utilities are growing grow faster than the US over the year.

IN Employment Change Compared to the U.S.

Industry	Month to Month			Year-to-Date			Year-to-Year		
	Indiana	U.S.	Indiana vs U.S.	Indiana	U.S.	Indiana vs U.S.	Indiana	U.S.	Indiana vs U.S.
Private Educational & Health Services	0.2%	0.2%	UNDER	3.3%	2.3%	OVER	3.2%	2.6%	OVER
.....Private Educational Services	-0.5%	0.3%	UNDER	2.3%	2.1%	OVER	0.3%	2.6%	UNDER
.....Health Care & Social Assistance	0.3%	0.2%	OVER	3.4%	2.4%	OVER	3.8%	2.6%	OVER
Manufacturing	0.3%	0.0%	OVER	-0.8%	-0.5%	UNDER	-0.7%	-0.4%	UNDER
Professional & Business Services	2.6%	0.3%	OVER	1.7%	2.6%	UNDER	1.9%	2.9%	UNDER
Financial Activities	1.1%	0.1%	OVER	2.8%	1.8%	OVER	2.4%	1.9%	OVER
Construction	-1.2%	0.3%	UNDER	-0.7%	1.6%	UNDER	0.9%	2.4%	UNDER
Leisure and Hospitality	0.3%	0.2%	OVER	1.1%	1.7%	UNDER	1.4%	1.9%	UNDER
Trade, Transportation & Utilities	0.0%	0.0%	OVER	0.6%	1.1%	UNDER	1.8%	1.2%	OVER
.....Trade	-0.2%	0.0%	UNDER	1.3%	1.2%	OVER	1.9%	1.3%	OVER
.....Transportation, Warehousing & Utils	0.8%	0.2%	OVER	-1.3%	0.8%	UNDER	1.3%	1.2%	OVER
All Other	1.0%	0.0%	OVER	0.7%	-0.1%	OVER	0.3%	0.0%	OVER
Total Private	0.5%	0.1%	OVER	1.1%	1.5%	UNDER	1.4%	1.7%	UNDER
Government (Includes Public Schools & Hospitals)	0.0%	0.1%	UNDER	0.5%	0.9%	UNDER	0.7%	1.0%	UNDER
Total Nonfarm	0.4%	0.1%	OVER	1.0%	1.4%	UNDER	1.3%	1.6%	UNDER



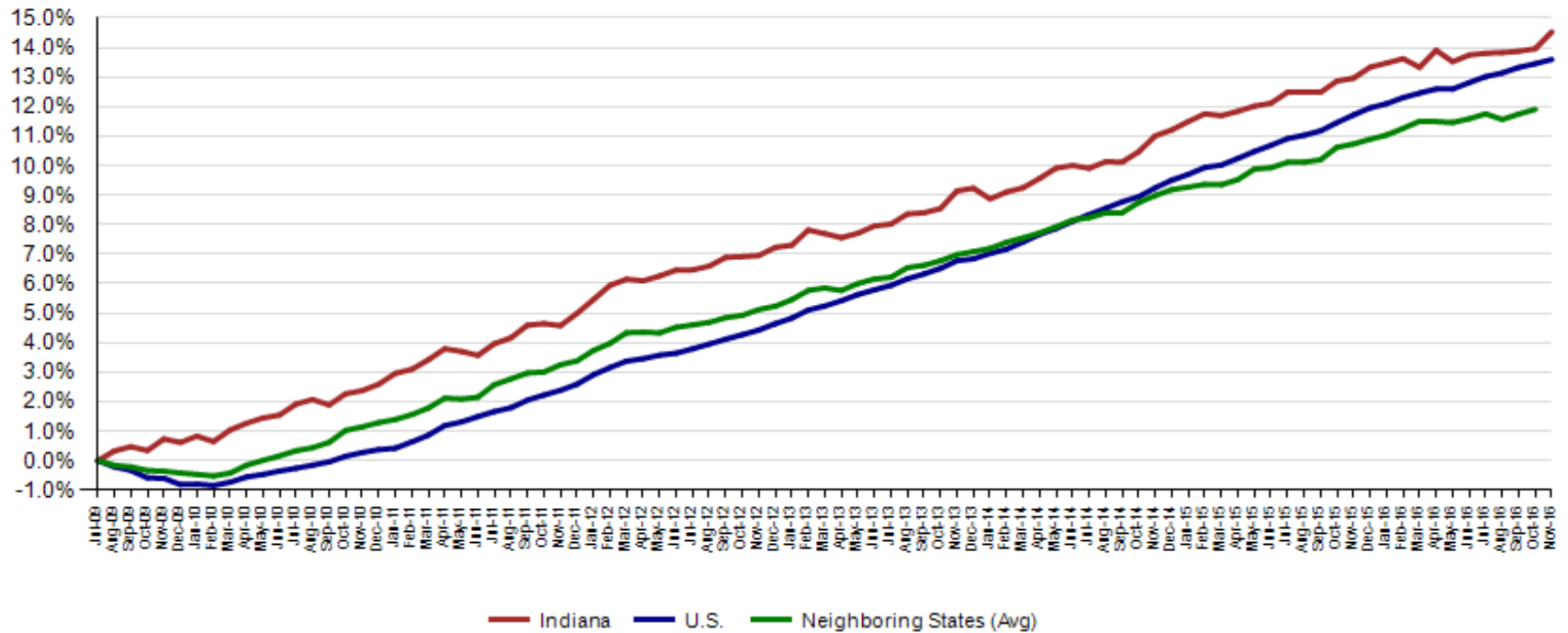
October Total Private preliminary estimates were revised down by 1,500. The change from September to October is now an increase of 1,900.

Revisions to October 2016 Estimates						
INDUSTRY TITLE	Sep	Oct Prel	Oct Rev	Revision	Chg from Sep	Prel Chg from Sep
Total Nonfarm	3075.9	3077.7	3076.4	-1.3	0.5	1.8
Total Private	2645.7	2649.1	2647.6	-1.5	1.9	3.4
Goods Producing	652.4	651.7	652.6	0.9	0.2	-0.7
Service-Providing	2423.5	2426.0	2423.8	-2.2	0.3	2.5
Private Service Providing	1993.3	1997.4	1995.0	-2.4	1.7	4.1
Construction	131.7	131.6	131.7	0.1	0.0	-0.1
Manufacturing	514.6	514.0	514.8	0.8	0.2	-0.6
Trade, Transportation, and Utilities	595.9	596.7	596.5	-0.2	0.6	0.8
Wholesale Trade	117.2	117.3	117.7	0.4	0.5	0.1
Retail Trade	336.7	336.8	336.5	-0.3	-0.2	0.1
Transportation, Warehousing, and Utilities	142.0	142.6	142.3	-0.3	0.3	0.6
Information	31.7	31.7	31.7	0.0	0.0	0.0
Financial Activities	133.7	133.3	133.5	0.2	-0.2	-0.4
Finance and Insurance	97.8	98.3	98.3	0.0	0.5	0.5
Real Estate and Rental and Leasing	35.9	35.0	35.2	0.2	-0.7	-0.9
Professional and Business Services	325.4	324.7	325.3	0.6	-0.1	-0.7
Professional, Scientific, and Technical Services	109.3	110.8	110.9	0.1	1.6	1.5
Management of Companies and Enterprises	33.9	33.9	33.9	0.0	0.0	0.0
Admin & Support & Waste Mgmt & Remediation Services	182.2	180.0	180.5	0.5	-1.7	-2.2
Education and Health Services	472.5	476.1	473.7	-2.4	1.2	3.6
Educational Services	73.9	77.3	75.3	-2.0	1.4	3.4
Health Care and Social Assistance	398.6	398.8	398.4	-0.4	-0.2	0.2
Leisure and Hospitality	307.3	307.7	307.0	-0.7	-0.3	0.4
Other Services	126.8	127.2	127.3	0.1	0.5	0.4
Government	430.2	428.6	428.8	0.2	-1.4	-1.6



Since the low point of employment in July 2009, private sector employment growth in Indiana has surpassed the U.S. (14.5% vs. 13.6%).

Private Sector Job Growth Since the Low Point of Employment in Indiana

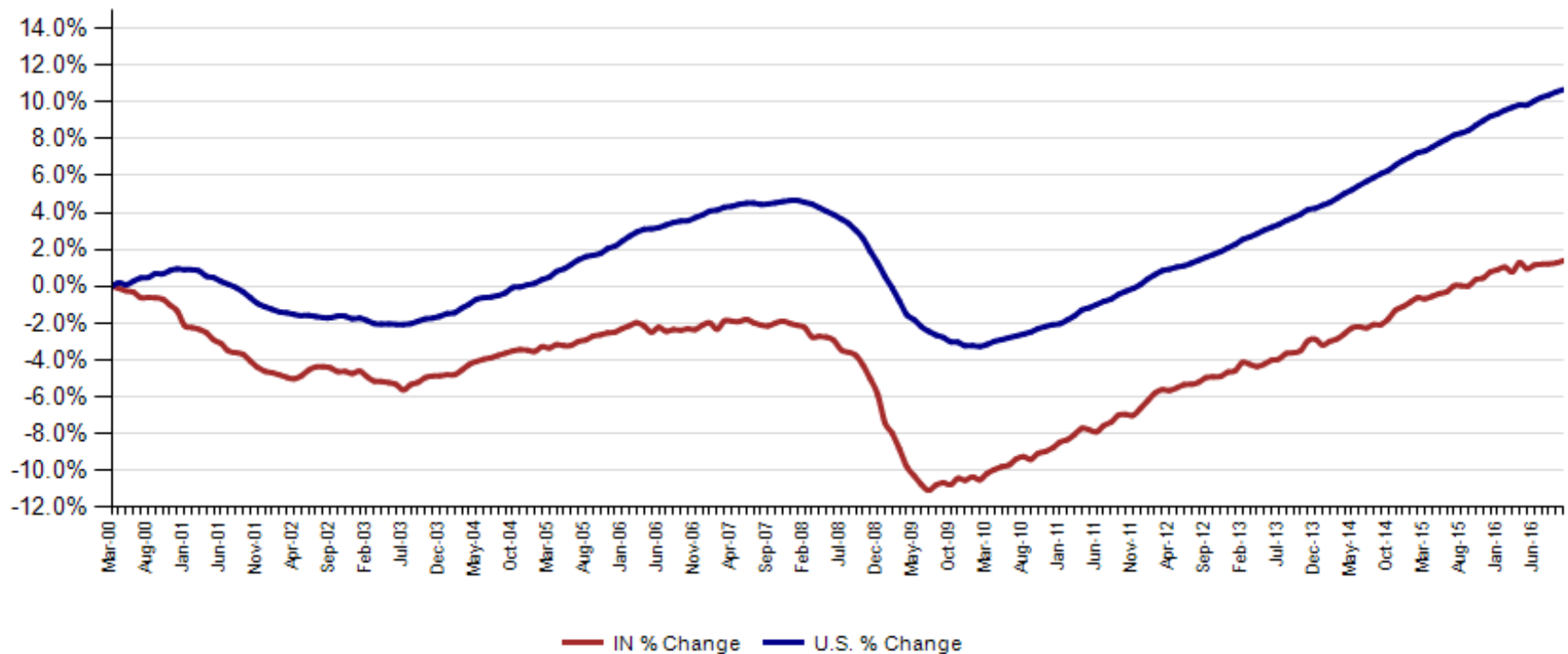


Source: Current Employment Statistics, seasonally adjusted



Since Indiana's high point of employment (March 2000), private sector employment growth in Indiana has lagged the U.S. (1.8% growth vs. 10.8% nationally).

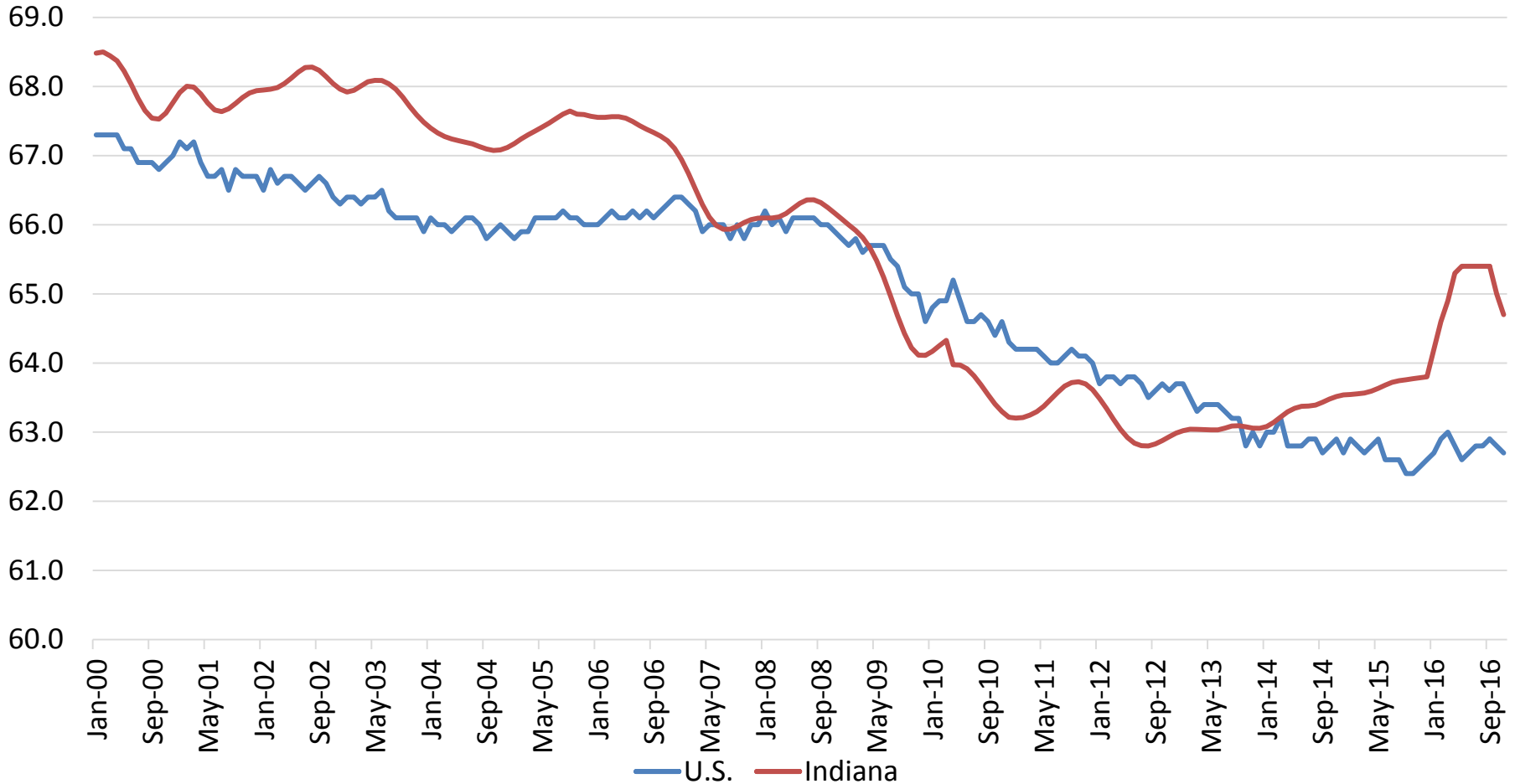
Private Sector Job Growth Since the Peak of Employment in Indiana



Source: Current Employment Statistics, seasonally adjusted



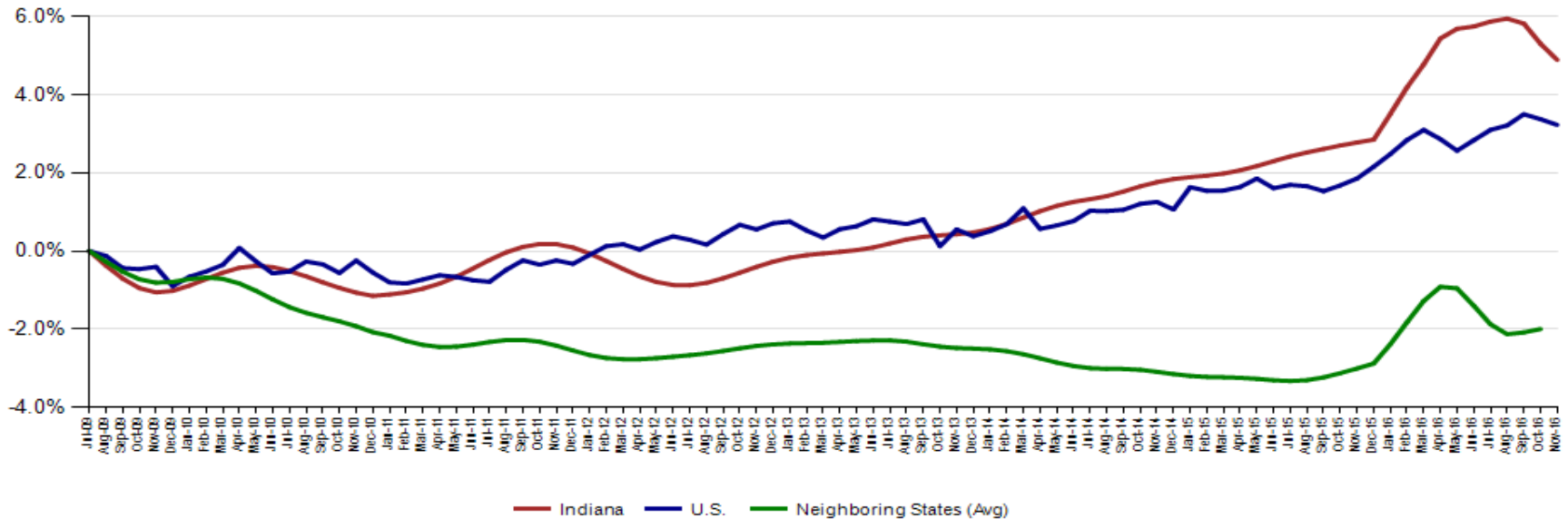
Indiana November Labor Force lost 13,220 over the month. Indiana's labor force is now at 3,344,502 and the Participation Rate now stands at 64.7%. The Labor Force has lost 33,742 since the peak in August 2016 but is still up 67,327 over the year and





Indiana's Seasonally Adjusted Labor Force is now at 3,344,502 and the number of employed is at 3,205,050.

Labor Force Change Since July 2009 Indiana Trough (seasonally adjusted)

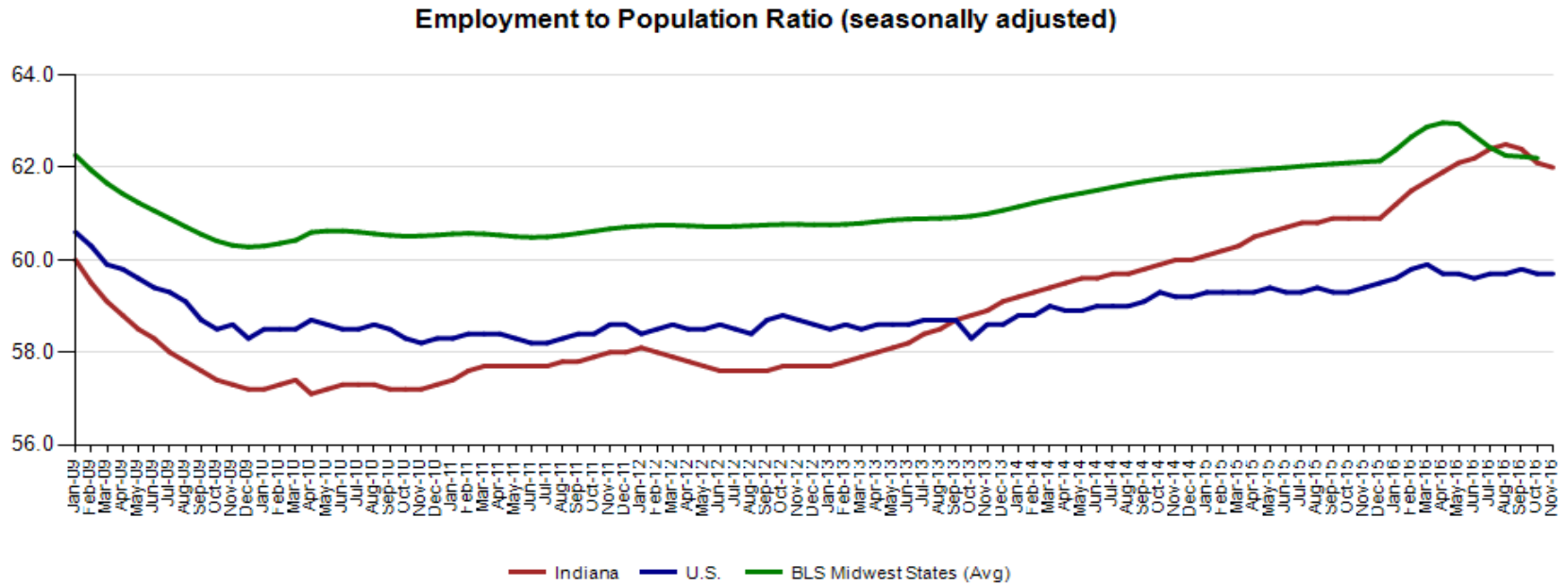




The November Indiana Employment to Population Ratio is 62.0% and the US Rate is now at 59.7%



Indiana's Employment to Population November rate is 62.0% The November US Employment to Population Ratio is 59.7% The BLS Regional States 62.2% (October 2016).



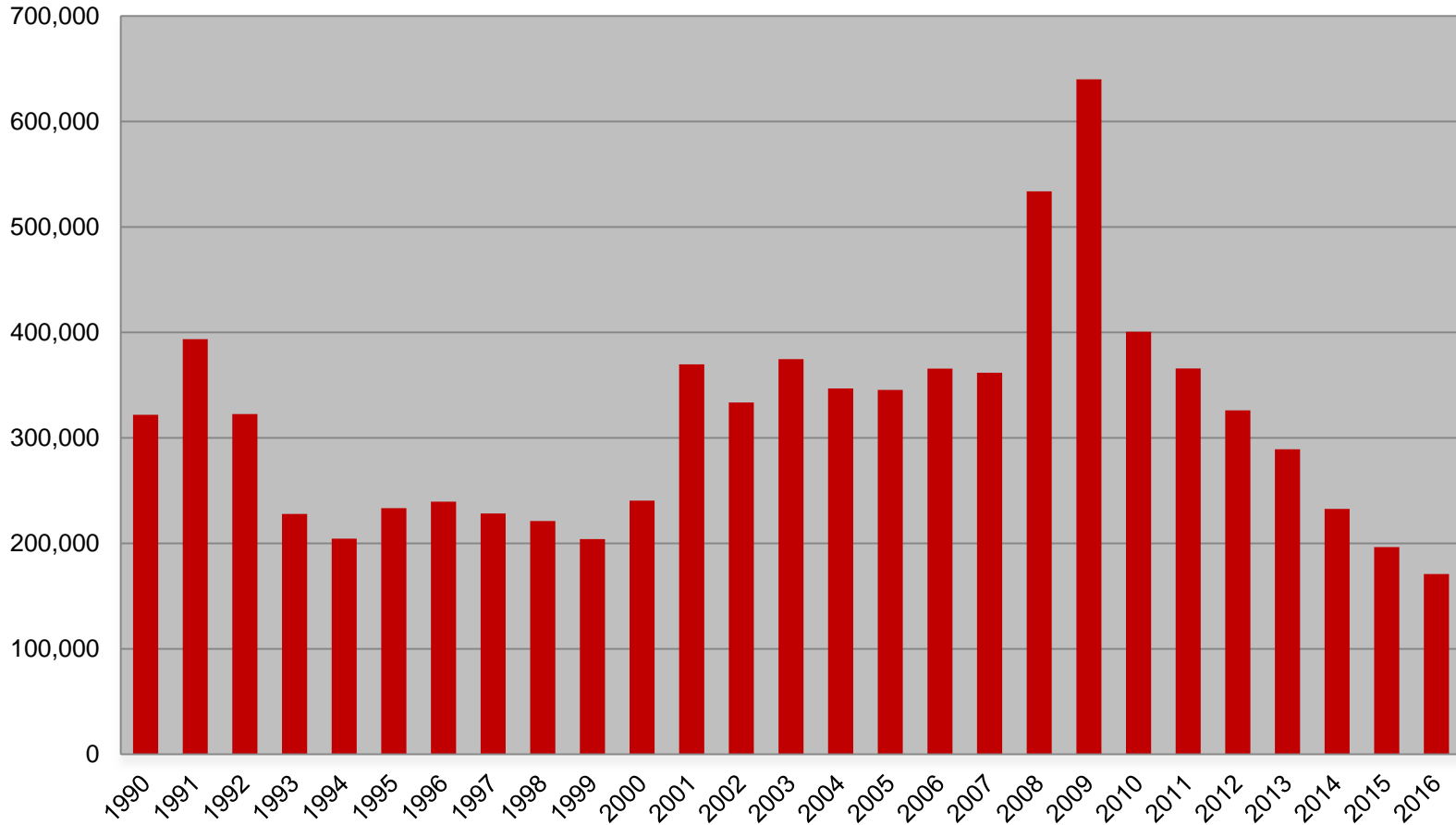


Midwest Comparison Rates: Seasonally Adjusted Over the Year and Over the Month (confidential and preliminary)

	November 2015	October 2016	November 2016	Monthly change	Yearly change
Indiana	4.5%	4.4%	4.2%	-0.2%	-0.3%
U.S.	5.0%	4.9%	4.6%	-0.3%	-0.4%
Illinois	6.0%	5.6%		-5.6%	-6.0%
Kentucky	5.6%	5.1%	4.8%	-0.3%	-0.8%
Michigan	5.1%	4.7%	4.9%	0.2%	-0.2%
Ohio	4.7%	4.9%	4.9%	0.0%	0.2%



Weekly Initial Claims – 49 weeks aggregate





Regular UI Claims – Reference Week (12th of the month) Input to LAUS Unemployment Rate Model Declines over the month - and over the year

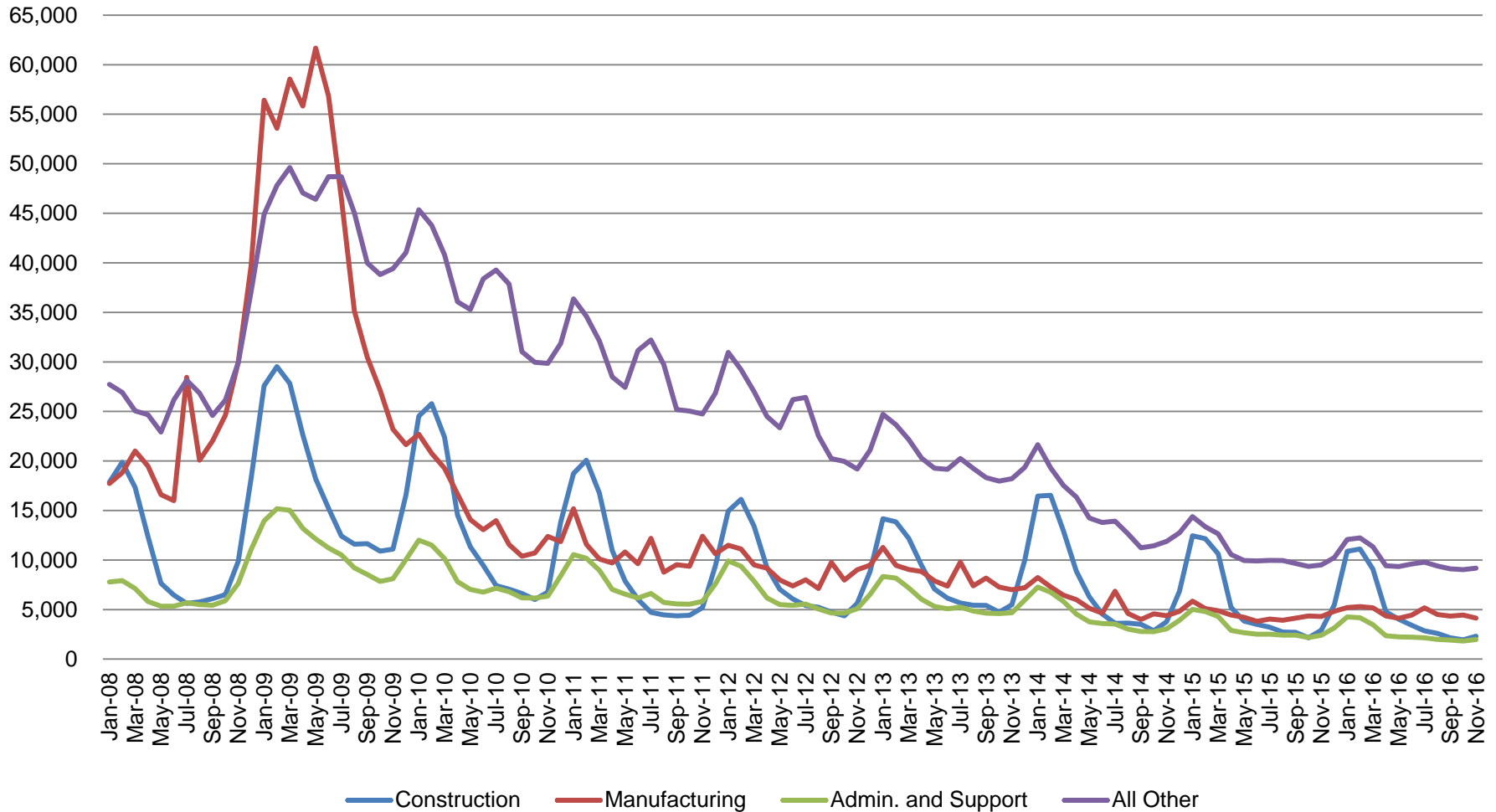
Without earnings – Reference week claims

	2006	2007	2008	2009	2010	2011	2012	2013	2014	2015	2016	OTM Change	OTY Change
JANUARY	65,898	71,296	75,294	150,888	105,910	84,706	71,042	63,223	49,377	41,333	36,555	10,306	(4,778)
FEBRUARY	67,347	75,432	78,068	154,388	103,432	80,852	69,570	60,183	52,316	39,282	36,909	354	(2,373)
MARCH	59,716	64,936	74,759	157,257	93,469	71,696	60,752	54,578	45,928	35,755	32,439	(4,470)	(3,316)
APRIL	48,103	53,325	64,948	143,842	74,481	59,036	51,652	48,548	39,717	25,597	23,895	(8,544)	(1,702)
MAY	46,779	46,002	55,480	141,174	66,779	54,680	46,328	42,997	32,460	22,807	22,300	(1,595)	(507)
JUNE	45,533	46,350	57,228	136,670	67,996	55,021	46,820	41,722	29,524	22,030	22,025	(275)	(5)
JULY	53,424	51,141	72,032	121,336	69,447	58,031	47,268	44,597	30,845	22,341	22,326	301	(15)
AUGUST	45,021	43,887	61,985	103,509	62,976	51,710	42,134	39,998	26,061	21,472	20,737	(1,589)	(735)
SEPTEMBER	41,247	42,500	61,548	92,680	58,280	46,824	41,955	39,563	23,685	20,941	19,372	(1,365)	(1,569)
OCTOBER	42,487	42,313	67,306	86,275	58,317	46,909	39,467	37,778	23,768	19,917	19,143	(229)	(774)
NOVEMBER	43,868	45,362	81,466	82,451	58,846	51,201	41,018	38,517	25,315	21,199	19,179	36	(2,020)
DECEMBER	53,566	54,201	109,651	91,814	65,279	55,104	46,371	42,484	30,982	26,249			



Regular UI Claims by Industry

For the Reference Week of Each Month





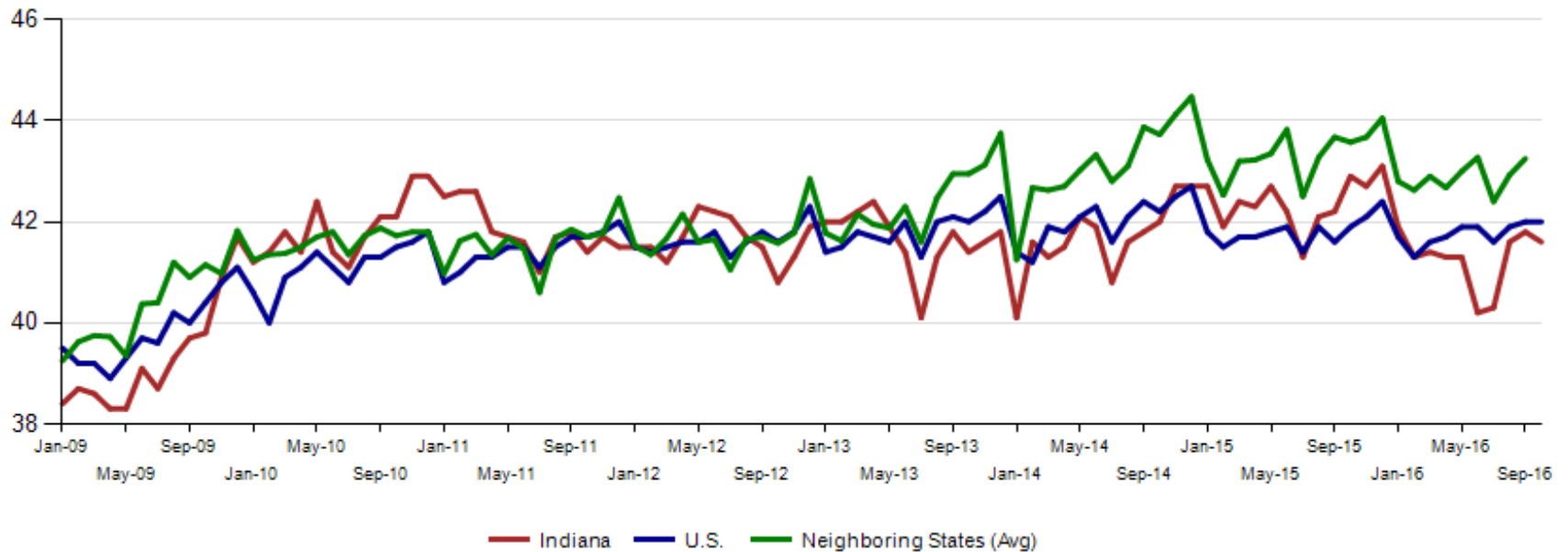
Internal and External Indiana Career Connect job orders are 67,011 in November. Health Care & Social Services, Manufacturing and Administrative & Support & Waste Management & Remediation Services (this includes temp help services) top this list.

Nov-2016	Prior Year			Current Year			Change over Prior Year			Current Year Including External			Current Duration (days)	
	September	October	November	September	October	November	September	October	November	September	October	November		November
NAICS_title														
Total	8,115	8,586	7,160	8,637	9,354	8,301	6%	9%	16%	63,530	69,535	67,011	56	
Health Care and Social Services	1,615	1,947	1,715	1,681	1,985	1,919	4%	2%	12%	10,303	10,526	11,125	43	
Manufacturing	1,734	1,515	1,251	1,543	1,639	1,397	-11%	8%	12%	4,448	4,535	3,747	62	
Admin. & Support & Waste Mgt. & Rem. Services	915	1,138	869	1,261	1,263	1,032	38%	11%	19%	8,529	8,898	7,844	55	
Retail Trade	729	757	648	721	937	704	-1%	24%	9%	9,586	10,911	11,060	43	
Professional, Scientific, and Technical Services	672	659	588	680	664	646	1%	1%	10%	3,496	3,805	3,508	71	
Educational Services	129	189	127	611	582	515	374%	208%	306%	2,787	2,489	2,494	27	
Transportation & Warehousing	391	427	363	425	418	366	9%	-2%	1%	7,760	7,072	5,197	83	
Wholesale Trade	467	432	363	322	438	364	-31%	1%	0%	2,262	1,883	2,112	42	
Accommodation and Food Services	142	255	151	292	308	338	106%	21%	124%	5,001	8,361	7,880	52	
Finance and Insurance	232	232	168	206	253	189	-11%	9%	13%	2,478	2,446	2,733	86	
Other Services(Except Public Administration)	183	159	175	168	174	177	-8%	9%	1%	1,355	1,382	1,061	118	
Information	298	284	214	235	224	177	-21%	-21%	-17%	1,505	1,622	2,683	51	
Public Administration	186	163	207	106	107	134	-43%	-34%	-35%	914	1,850	2,430	104	
Real Estate and Rental and Leasing	115	98	81	97	111	131	-16%	13%	62%	1,347	1,831	1,394	57	
Construction	157	152	100	128	132	93	-18%	-13%	-7%	513	475	514	99	
Utilities	65	96	68	107	70	73	65%	-27%	7%	219	174	187	47	
Agriculture, Forestry, Fishing and Hunting	16	28	20	11	19	17	-31%	-32%	-15%	39	37	44	114	
Mining	13	3	8	10	4	10	-23%	33%	25%	34	19	33	29	
Arts, Entertainment, and Recreation	32	16	16	20	17	9	-38%	6%	-44%	197	220	185	75	
Unallocated	10	10	7	2	3	7	-80%	-70%	0%	2	3	7	210	
Management of Companies and Enterprises	14	26	21	11	6	3	-21%	-77%	-86%	755	996	773	204	



Average weekly hours for Indiana manufacturing remained the same at 41.7 for the second month in a row in November. Nationally, manufacturing weekly hours also remained at 42.1. This is the eighth month in a row that the National average weekly hours was higher than Indiana. Neighboring states were at 42.0 hours (October data).

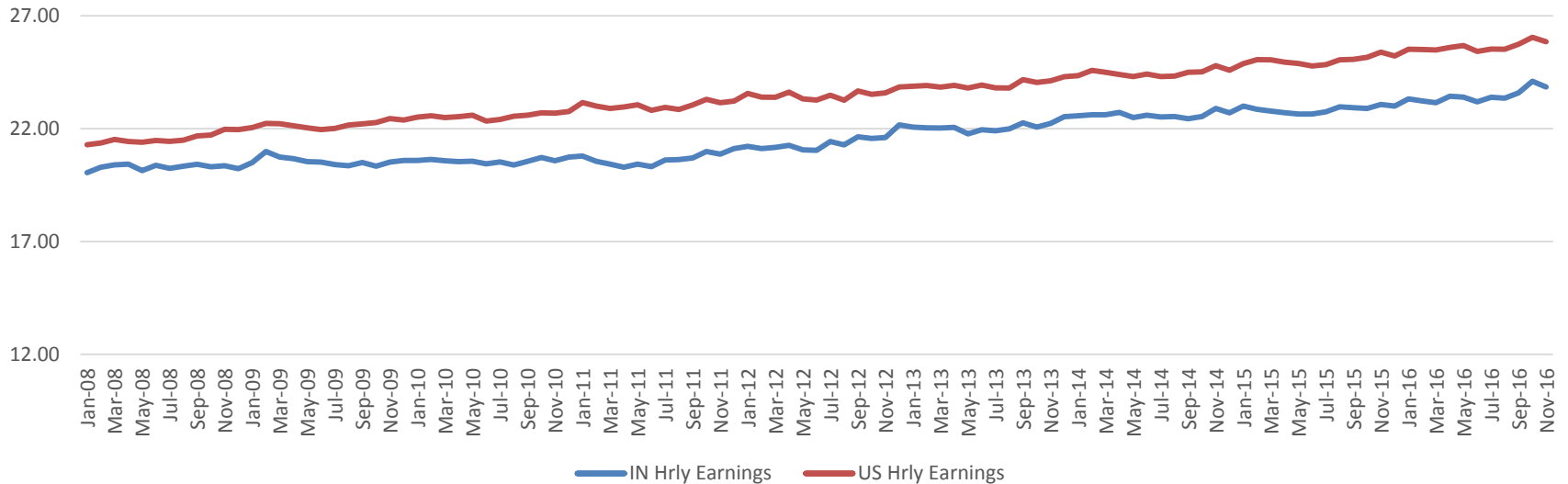
Avg. Weekly Manufacturing Production Hours (non seasonally adjusted)





November CES Payroll data show Indiana average hourly wage is \$23.85
Compared to the U.S. Average of \$25.85.

Indiana vs US Total Private Average Hourly Earnings





Indiana November Hourly wage is 92% of the National Average.

Indiana Hourly Wage as a percentage of the US Hourly Wage



Source: Current Employment Statistics, not seasonally adjusted