



INDIANA
WORKFORCE
DEVELOPMENT
AND ITS **WorkOne** CENTERS

Indiana's Employment and Labor Force Estimates November 2014

12/16/2014



Key Points

- Indiana's November 2014 seasonally adjusted unemployment rate held steady at 5.7%. Indiana's rate is down 1.2% from November 2013, and has declined 1.1 since the start of the year (6.8% December 2013).
- The national rate also held steady at 5.8%. This is the eleventh consecutive month that Indiana's unemployment rate is below the national unemployment rate.
- Indiana's private sector grew by 15,800 jobs (0.6%) in November. This was twice the national rate of growth over the month. The United States had private sector increases of 314,000 jobs (0.3%) over the month.
- Gains were spread across most industry sectors, with the strongest growth in Professional and Business Services (6,400), Trade, Transportation & Utilities (3,400), and Manufacturing (2,300). Indiana Private sector employment is up 50,600 from a year ago, November 2013. Private sector employment is up 49,300 year to date (December 2013).
- Indiana's labor force also continued to see gains in October, increasing by 12,300. This was driven by gains in LAUS employed by 9,500 over the month. Unemployment rose by 2,800 in November.



Since January 2013, Indiana private sector monthly job growth has averaged about 4,400 with 17 of 23 months showing positive job growth. Gains this month were spread across most sectors.

IN Employment Change Over the Month, Year-to-Date and Over the Year (seasonally adjusted)

Industry	November 2013	December 2013	October 2014	November 2014	Month Change	Y-to-D Change	Y-to-Y Change
Private Educational & Health Services	443.1	443.0	443.9	445.7	1.8	2.7	2.6
.....Private Educational Services	70.1	70.5	71.9	72.9	1.0	2.4	2.8
.....Health Care & Social Assistance	373.0	372.5	372.0	372.8	0.8	0.3	-0.2
Manufacturing	498.6	497.7	520.3	522.6	2.3	24.9	24.0
Professional & Business Services	315.1	316.1	316.3	322.7	6.4	6.6	7.6
Financial Activities	130.5	130.4	131.1	133.0	1.9	2.6	2.5
Construction	125.1	125.0	126.8	128.3	1.5	3.3	3.2
Leisure and Hospitality	293.5	294.0	297.7	296.2	-1.5	2.2	2.7
Trade, Transportation & Utilities	572.9	573.6	574.4	577.8	3.4	4.2	4.9
.....Trade	436.7	437.3	436.5	440.3	3.8	3.0	3.6
.....Transportation, Warehousing & Utilities	136.2	136.3	137.9	137.5	-0.4	1.2	1.3
All Other	162.8	163.1	165.9	165.9	0.0	2.8	3.1
Total Private	2,541.6	2,542.9	2,576.4	2,592.2	15.8	49.3	50.6
Government (Includes Public Schools & Hospitals)	422.4	422.3	428.5	427.8	-0.7	5.5	5.4
Total Nonfarm	2,964.0	2,965.2	3,004.9	3,020.0	15.1	54.8	56.0
United States Total Private	115,455.0	115,541.0	117,798.0	118,112.0	314.0	2,571.0	2,657.0

Source: Current Employment Statistics, seasonally adjusted



All private industry sectors show increases since the trough of 2009. Total private is up 264,800 since that point. Indiana (private) employers need to add 20,400 additional jobs to reach the March 2000 private sector peak.

IN Statewide Estimates (seasonally adjusted) -- November 2014

Supersector	Private Empl. Peak March 2000	Private Empl. Trough July 2009	October 2014	November 2014	Change Since Peak	Change Since Trough	Month to Month Change
Private Educational & Health Services	330.1	415.3	443.9	445.7	115.6	30.4	1.8
.....Private Educational Services	52.2	67.5	71.9	72.9	20.7	5.4	1.0
.....Health Care & Social Assistance	277.9	347.8	372.0	372.8	94.9	25.0	0.8
Manufacturing	671.1	427.9	520.3	522.6	-148.5	94.7	2.3
Professional & Business Services	260.5	255.9	316.3	322.7	62.2	66.8	6.4
Financial Activities	145.7	130.7	131.1	133.0	-12.7	2.3	1.9
Construction	154.1	116.5	126.8	128.3	-25.8	11.8	1.5
Leisure and Hospitality	267.2	276.8	297.7	296.2	29.0	19.4	-1.5
Trade, Transportation & Utilities	617.5	545.7	574.4	577.8	-39.7	32.1	3.4
.....Trade	485.1	421.6	436.5	440.3	-44.8	18.7	3.8
.....Transportation, Warehousing & Utilities	132.4	124.1	137.9	137.5	5.1	13.4	-0.4
All Other	166.4	158.6	165.9	165.9	-0.5	7.3	0.0
Total Private	2,612.6	2,327.4	2,576.4	2,592.2	-20.4	264.8	15.8
Government (Includes Public Schools & Hospitals)	404.6	434.5	428.5	427.8	23.2	-6.7	-0.7
Total Nonfarm	3,017.2	2,761.9	3,004.9	3,020.0	2.8	258.1	15.1
United States Total Private	110,873.0	108,096.0	117,798.0	118,112.0	7,239.0	10,016.0	314.0



Private sector employment growth in Indiana since July 2009 has seen the strongest growth in Professional & Business services, Manufacturing, Transportation, Warehousing & Utilities and Construction. Private Employment remains 0.8% below March 2000 peak levels.

IN Statewide Estimates (seasonally adjusted) -- November 2014

Supersector	Private Empl. Peak March 2000	Private Empl. Trough July 2009	October 2014	November 2014	% Chg. Since Peak	% Chg. Since Trough	% Month to Month Change
Private Educational & Health Services	330.1	415.3	443.9	445.7	35.0%	7.3%	0.4%
.....Private Educational Services	52.2	67.5	71.9	72.9	39.7%	8.0%	1.4%
.....Health Care & Social Assistance	277.9	347.8	372.0	372.8	34.1%	7.2%	0.2%
Manufacturing	671.1	427.9	520.3	522.6	-22.1%	22.1%	0.4%
Professional & Business Services	260.5	255.9	316.3	322.7	23.9%	26.1%	2.0%
Financial Activities	145.7	130.7	131.1	133.0	-8.7%	1.8%	1.4%
Construction	154.1	116.5	126.8	128.3	-16.7%	10.1%	1.2%
Leisure and Hospitality	267.2	276.8	297.7	296.2	10.9%	7.0%	-0.5%
Trade, Transportation & Utilities	617.5	545.7	574.4	577.8	-6.4%	5.9%	0.6%
.....Trade	485.1	421.6	436.5	440.3	-9.2%	4.4%	0.9%
.....Transportation, Warehousing & Utilities	132.4	124.1	137.9	137.5	3.9%	10.8%	-0.3%
All Other	166.4	158.6	165.9	165.9	-0.3%	4.6%	0.0%
Total Private	2,612.6	2,327.4	2,576.4	2,592.2	-0.8%	11.4%	0.6%
Government (Includes Public Schools & Hospitals)	404.6	434.5	428.5	427.8	5.7%	-1.5%	-0.2%
Total Nonfarm	3,017.2	2,761.9	3,004.9	3,020.0	0.1%	9.3%	0.5%
United States Total Private	110,873.0	108,096.0	117,798.0	118,112.0	6.5%	9.3%	0.3%

Source: Current Employment Statistics, seasonally adjusted



Manufacturing and Financial Activities are the private industry super-sectors where growth exceeded the U.S. over the month, over the year and year to date. Private Educational Services (subsector within Private Ed & Health Services) growth has exceeded national growth over the month and over the year.

IN Employment Change Compared to the U.S.

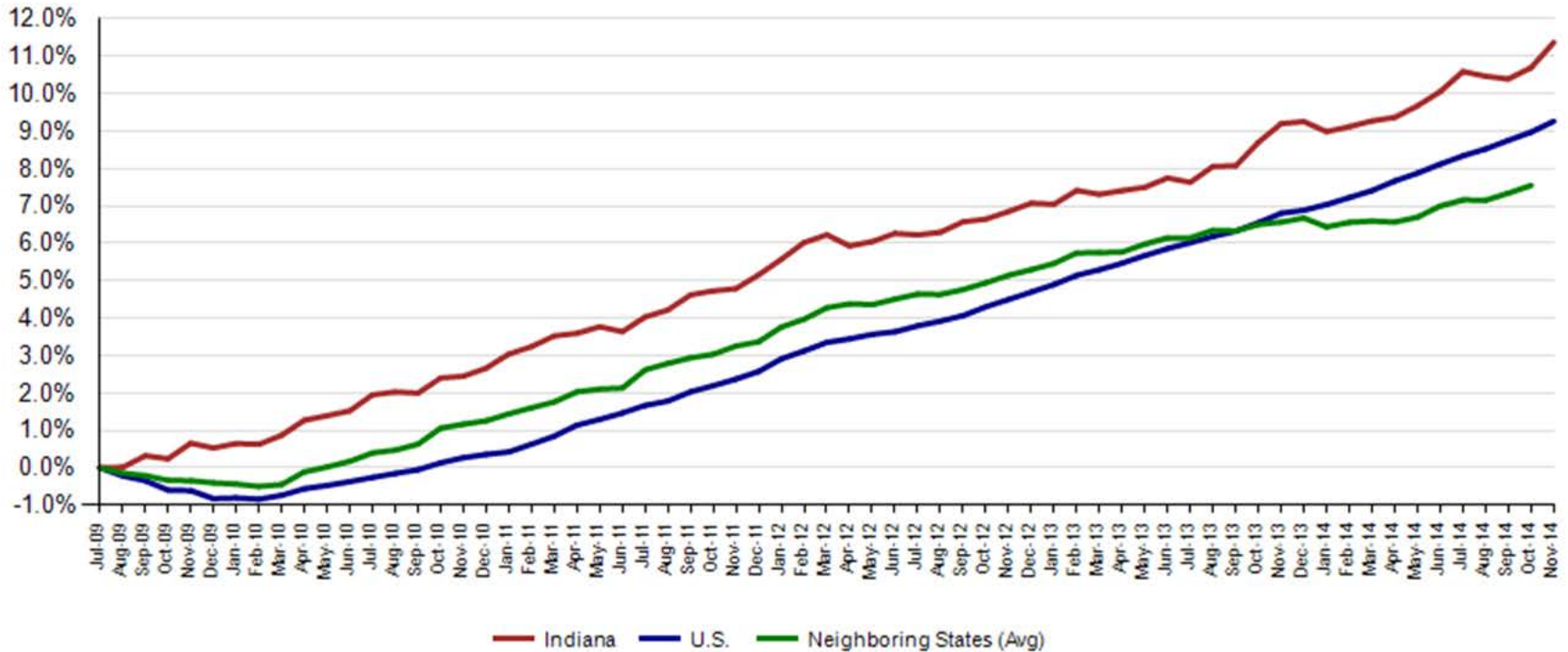
Industry	Indiana Month to Month	U.S. Month to Month	Indiana vs U.S. Change
Private Educational & Health Services	0.4%	0.2%	OVER
.....Private Educational Services	1.4%	0.0%	OVER
.....Health Care & Social Assistance	0.2%	0.2%	OVER
Manufacturing	0.4%	0.2%	OVER
Professional & Business Services	2.0%	0.4%	OVER
Financial Activities	1.4%	0.3%	OVER
Construction	1.2%	0.3%	OVER
Leisure and Hospitality	-0.5%	0.2%	UNDER
Trade, Transportation & Utilities	0.6%	0.3%	OVER
.....Trade	0.9%	0.2%	OVER
.....Transportation, Warehousing & Utils	-0.3%	0.3%	UNDER
All Other	0.0%	0.2%	UNDER
Total Private	0.6%	0.3%	OVER
Government (Includes Public Schools & Hospitals)	-0.2%	0.0%	UNDER
Total Nonfarm	0.5%	0.2%	OVER

Indiana Year-to-Date	U.S. Year-to-Date	Indiana vs U.S. Change
0.6%	2.0%	UNDER
3.4%	1.8%	OVER
0.1%	2.0%	UNDER
5.0%	1.4%	OVER
2.1%	3.6%	UNDER
2.0%	1.4%	OVER
2.6%	4.0%	UNDER
0.7%	2.5%	UNDER
0.7%	1.8%	UNDER
0.7%	1.6%	UNDER
0.9%	2.8%	UNDER
1.7%	1.4%	OVER
1.9%	2.2%	UNDER
1.3%	0.4%	OVER
1.8%	1.9%	UNDER

Indiana Year-to-Year	U.S. Year-to-Year	Indiana vs U.S. Change
0.6%	2.0%	UNDER
4.0%	1.9%	OVER
-0.1%	2.0%	UNDER
4.8%	1.4%	OVER
2.4%	3.7%	UNDER
1.9%	1.4%	OVER
2.6%	3.6%	UNDER
0.9%	2.6%	UNDER
0.9%	2.1%	UNDER
0.8%	1.9%	UNDER
1.0%	2.9%	UNDER
1.9%	1.3%	OVER
2.0%	2.3%	UNDER
1.3%	0.4%	OVER
1.9%	2.0%	UNDER

Since the July 2009 trough, Indiana firms have grown their employment by 11.4%, compared to growth of 9.3% for the US over this time frame. Aggregate growth for neighboring states through October was 7.6%.

Private Sector Job Growth Since the Low Point of Employment in Indiana

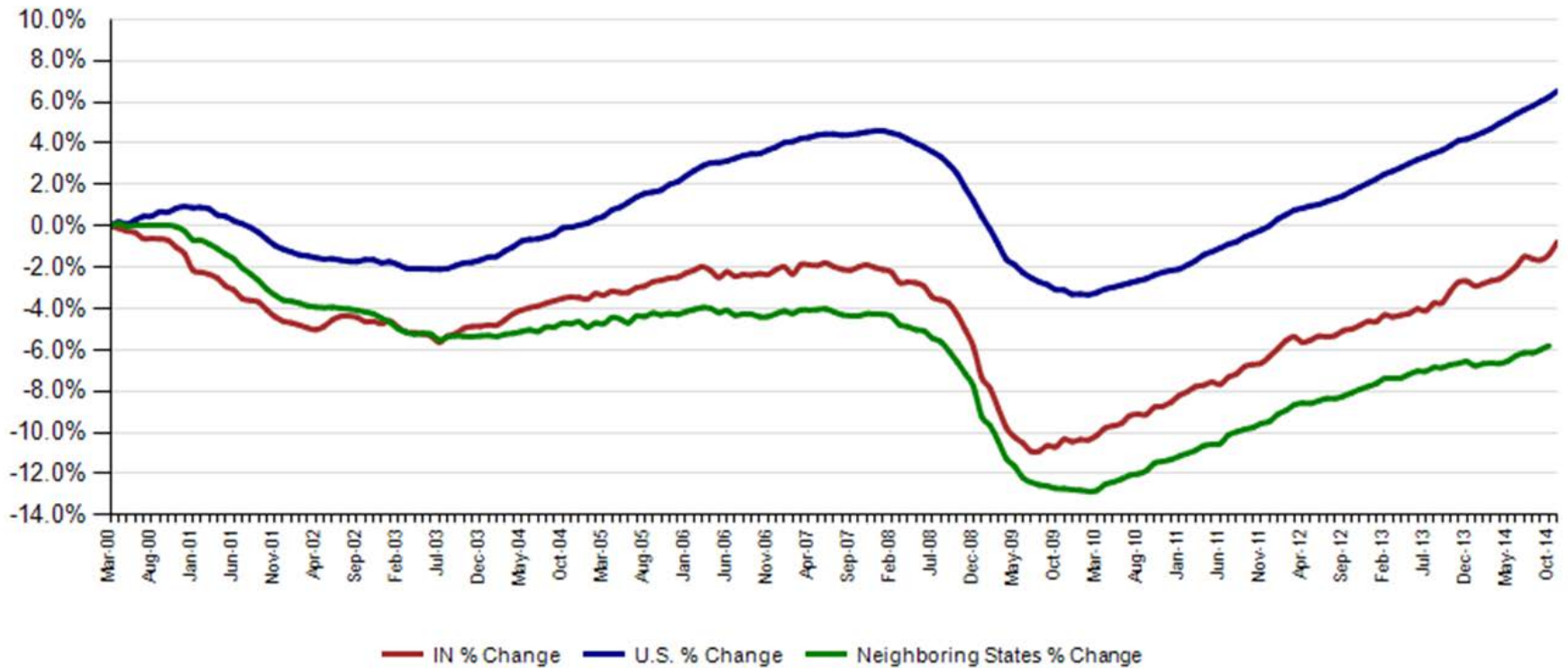


Source: Current Employment Statistics, seasonally adjusted



November private sector employment inched closer to March 2000 levels, with the current level of 2,592,200 just 0.8% below that peak. U.S. employment overall has grown 6.5% since that date while aggregate employment for surrounding states remains 5.8% below that peg point (October estimate).

Private Sector Job Growth Since the Peak of Employment in Indiana



Source: Current Employment Statistics, seasonally adjusted



Indiana's private sector employment for November rose by 15,800 jobs, but remains 20,400 below March 2000 peak levels (99.2%). Lost Manufacturing jobs present the greatest challenge, but Professional & Business Services, Private Education & Health Services and Leisure & Hospitality growth since the July 2009 trough has offset much of the Manufacturing contraction.

Trough to November 2014 Employment by Supersector, s.a.



** already above March 2000 peak

■ Trough to Current



Midwest Comparison Rates: Seasonally Adjusted Over the Year and Over the Month

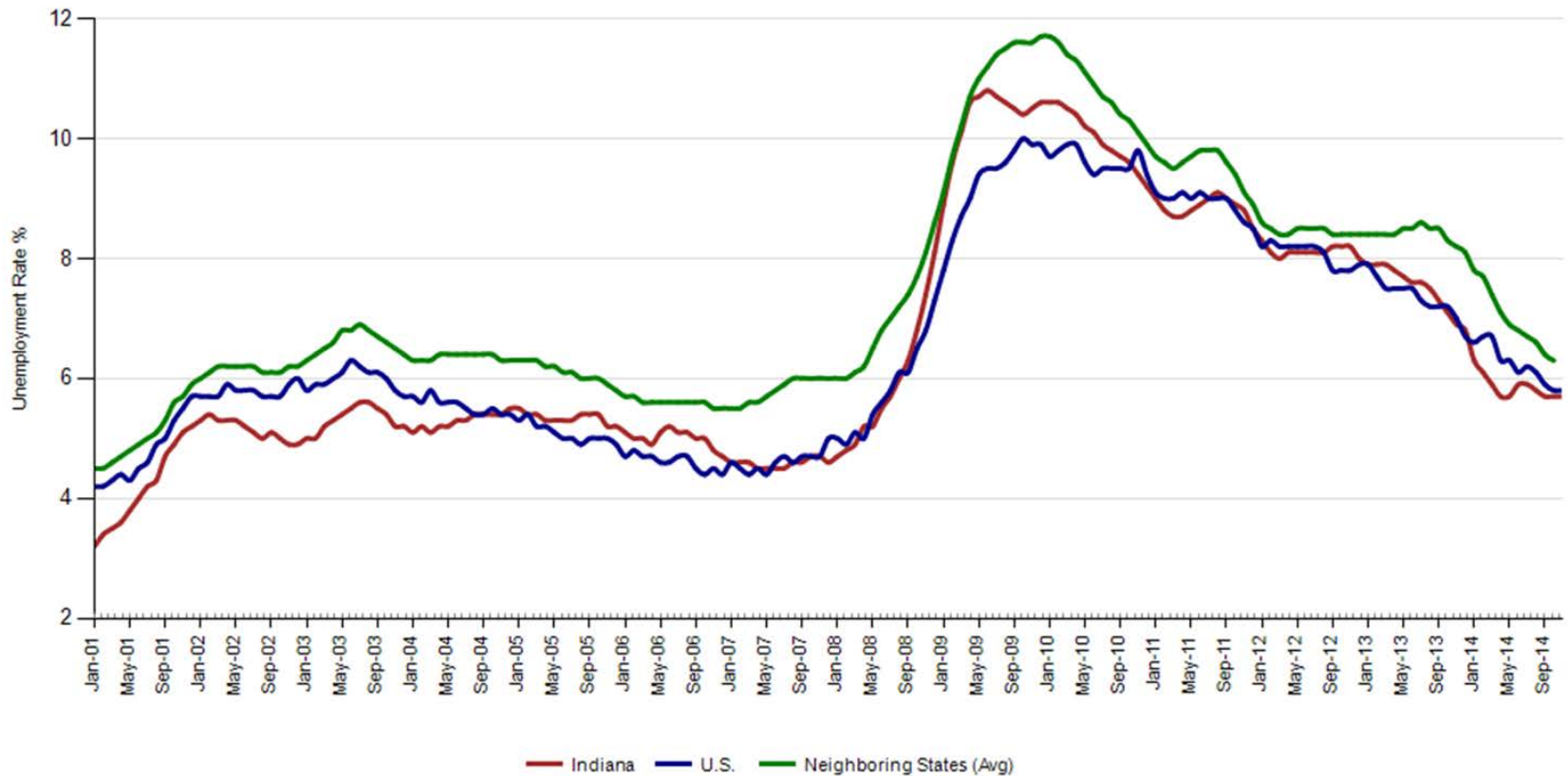
	November 2013	October 2014	November 2014	Monthly change	Yearly change
Indiana	6.9%	5.7%	5.7%	0.0%	-1.2%
U.S.	7.0%	5.8%	5.8%	0.0%	-1.2%
Illinois	9.0%	6.6%			
Kentucky	8.1%	6.2%	6.0%	-0.2%	-2.1%
Michigan	8.5%	7.1%	6.7%	-0.4%	-1.8%
Ohio	7.2%	5.3%	5.0%	-0.3%	-2.2%

Source: Local Area Unemployment Statistics, seasonally adjusted
(confidential and preliminary)



Indiana's unemployment rate remained unchanged at 5.7% for November, and the national rate also remained the same at 5.8%. November is the 11th consecutive month that the Indiana unemployment rate has been below the national average. The average rate (October) for neighboring states was 6.3%.

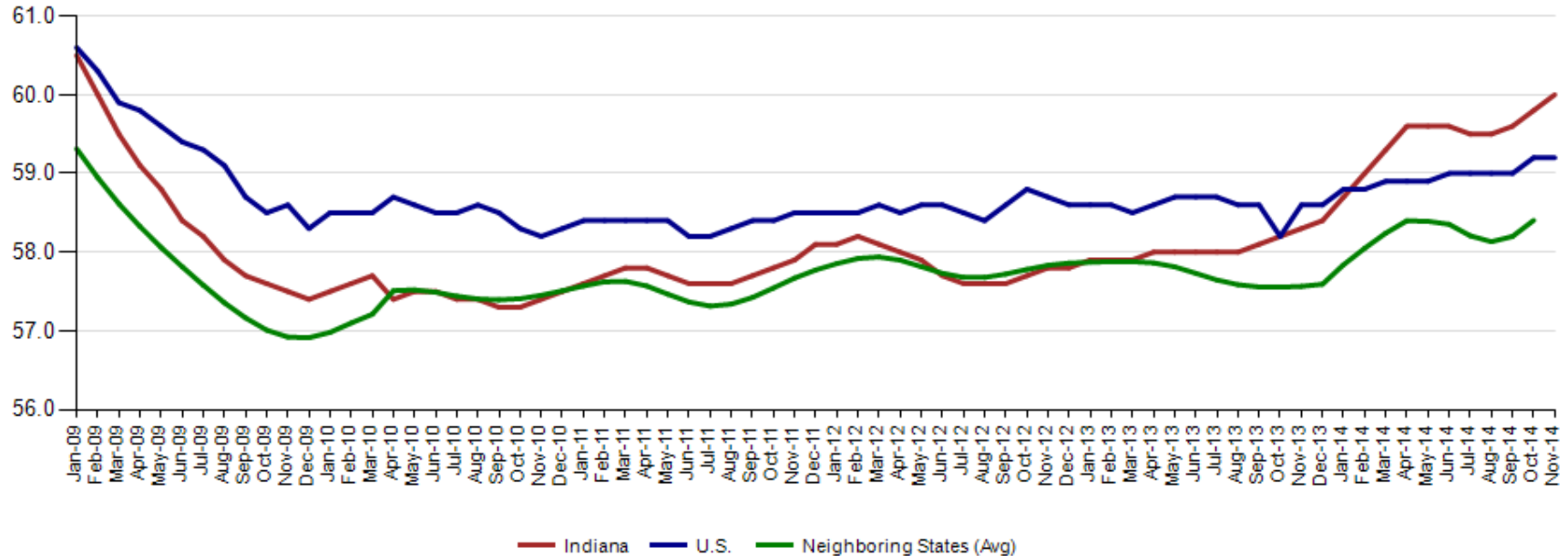
Unemployment Rate (seasonally adjusted)





Indiana's employment-to-population ratio rose by 0.2 to 60.0 in November exceeding the national rate of 59.2 (which remained unchanged over the month), the 10^h consecutive month when Indiana's E-to-P ratio has exceeded the nation's. The aggregate ratio for surrounding states was 58.4 (October).

Employment to Population Ratio (seasonally adjusted)

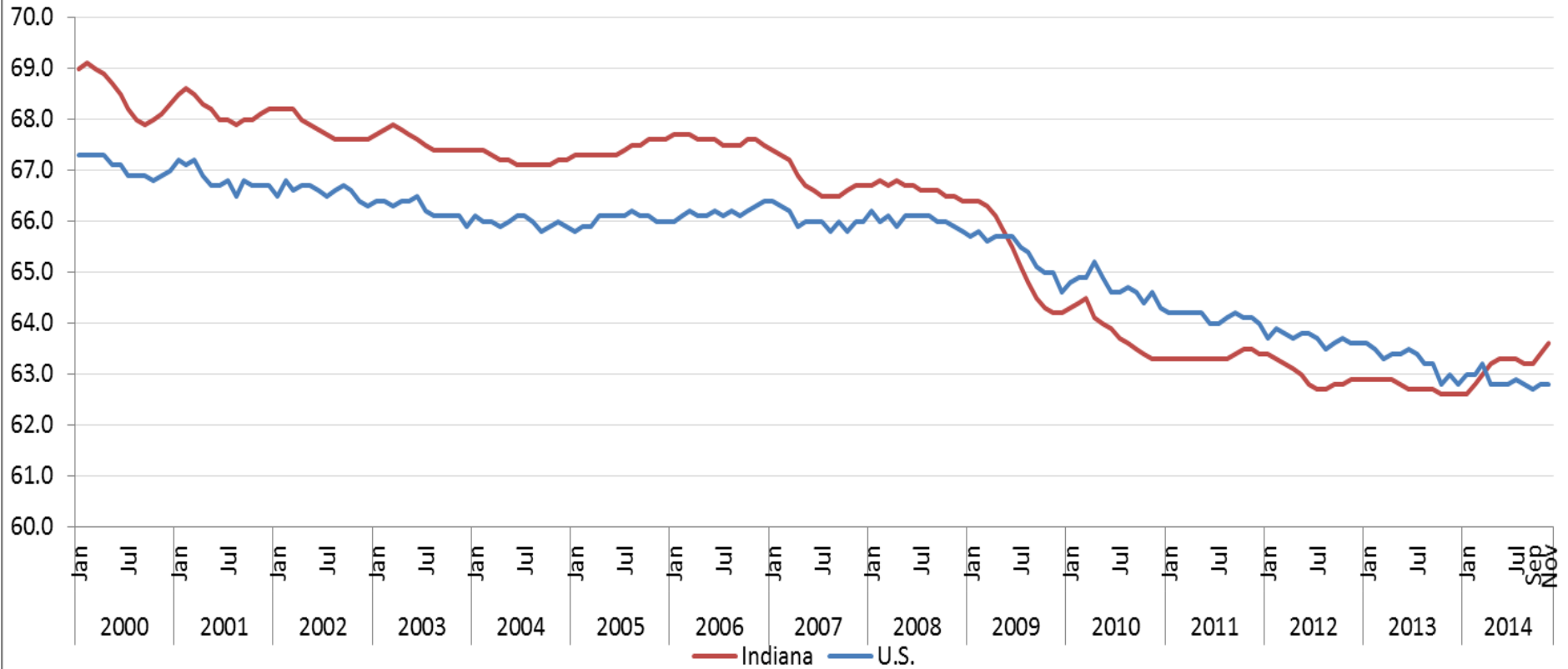


Source: Local Area Unemployment Statistics



Indiana's labor force participation rate rose by 0.2 to 63.6 in November, while the U.S. remained unchanged. November is the eighth consecutive month that Indiana's labor force participation rate has been higher than the nation's.

Labor Force Participation, Indiana and the U.S.

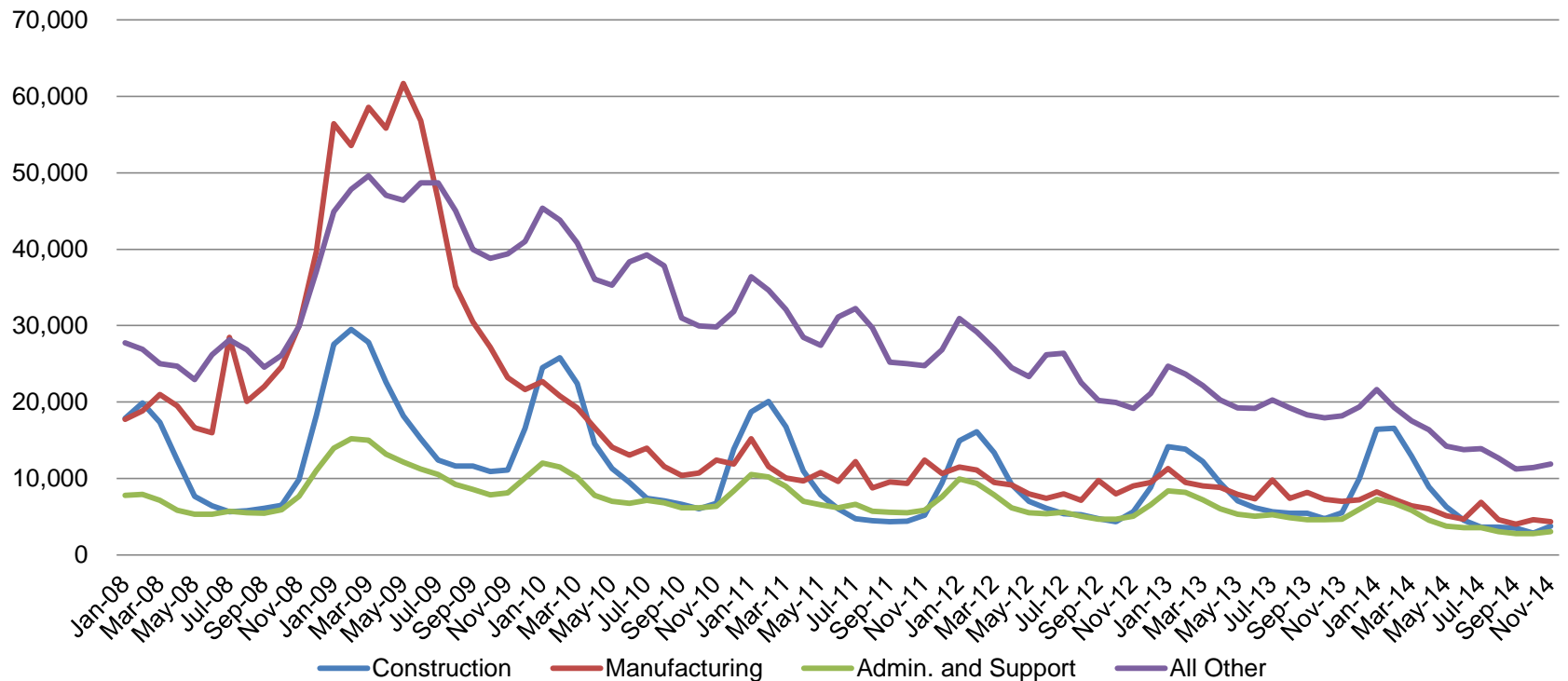




November saw some minor increases in claims for Construction, as would be expected with colder temperatures approaching. Claims levels for other industry sectors were largely unchanged.

Regular UI Claims by Industry

For the Reference Week of Each Month



Source: ETA

Employment trends for the two series both reflected healthy gains for November. A gain in unemployment over the month of 2,800 resulted in hefty growth in the labor force of 12,300

CES and LAUS Point-in-Time Comparison

	March 2000 (Peak)	July 2009 (Trough)	October 2014	November 2014	Change Peak	Change Trough	Change Prev. Month
CES Employed	3,017.2	2,761.9	3,004.9	3,020.0	2.8	258.1	15.1
LAUS Employed	3,076.1	2,854.4	3,062.4	3,071.9	-4.2	217.6	9.5
LAUS Unemployed	89.6	342.3	183.5	186.4	96.8	-155.9	2.8
Labor Force	3,165.7	3,196.6	3,246.0	3,258.3	92.6	61.7	12.3
Unemployment Rate	2.8	10.7	5.7	5.7	2.9	-5.0	0.0

(LAUS components may not sum exactly due to rounding.)

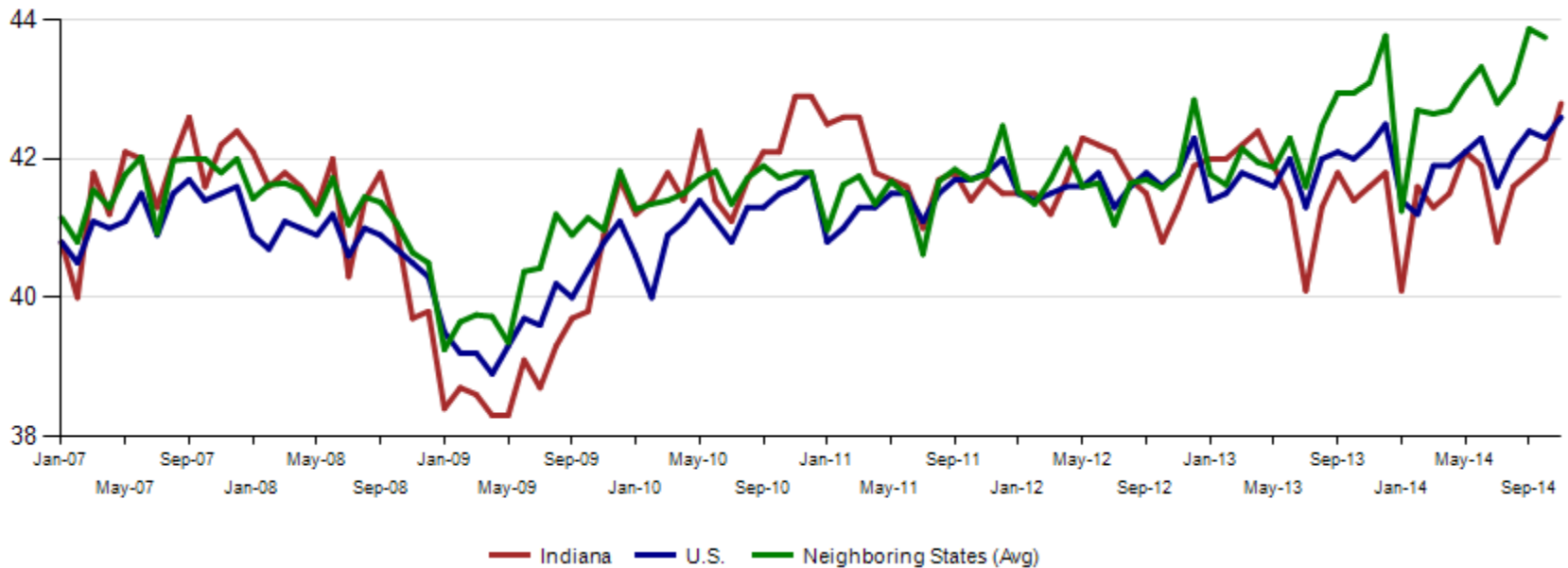


Additional Reference/Background Material



Average weekly hours for Indiana manufacturing workers climbed 0.8 to 42.8 for November compared to a 0.3 hour increase for the nation to 42.6 hours. AWH for neighboring states remained elevated (43.8) through October.

Avg. Weekly Manufacturing Production Hours (non seasonally adjusted)



Source: Current Employment Statistics, not seasonally adjusted

**MSA ESTIMATES:
2000 And Over-the-Year Change
Ranked on percentage change over-the-year
(no seasonal adjustment)**

IN Metropolitan Area Employment Estimates

MSA	November 2000	November 2013	October 2014	November 2014	November 2014 Change	Change since 2000	% Chg since 2000	Annual Change	Annual % Change
Elkhart-Goshen	123,400	120,600	126,700	126,200	-500	2,800	2.3%	5,600	4.6%
Kokomo	54,800	45,000	46,200	46,500	300	-8,300	-15.1%	1,500	3.3%
Columbus	45,000	50,200	51,300	51,800	500	6,800	15.1%	1,600	3.2%
Fort Wayne	220,300	213,900	220,000	220,600	600	300	0.1%	6,700	3.1%
Indianapolis-Carmel	858,400	952,000	968,500	973,900	5,400	115,500	13.5%	21,900	2.3%
Anderson	48,800	40,600	42,000	41,500	-500	-7,300	-15.0%	900	2.2%
Lafayette	96,600	101,200	102,100	102,500	400	5,900	6.1%	1,300	1.3%
Evansville	179,400	179,400	180,900	181,700	800	2,300	1.3%	2,300	1.3%
Muncie	58,600	52,600	53,100	53,200	100	-5,400	-9.2%	600	1.1%
South Bend	151,200	136,700	137,000	137,800	800	-13,400	-8.9%	1,100	0.8%
Gary Division	282,000	276,800	278,100	278,500	400	-3,500	-1.2%	1,700	0.6%
Terre Haute	78,200	71,700	72,100	72,000	-100	-6,200	-7.9%	300	0.4%
Bloomington	82,700	84,800	85,000	85,100	100	2,400	2.9%	300	0.4%
Michigan City	49,900	42,400	42,300	42,200	-100	-7,700	-15.4%	-200	-0.5%



Revisions to October estimates resulted in a 1,200 increase in private employment despite a minor as a downward revision of 500 jobs to Trade, Transportation and Utilities. This was more than offset by an upward revision of 1,500 in Professional and Business Services.

Revisions to October 2014 Estimates

INDUSTRY TITLE	Oct Prel	Oct Rev	Revision
Total Nonfarm	3,003.7	3004.9	1.2
Total Private	2,574.9	2576.4	1.5
Trade, Transportation, and Utilities	574.9	574.4	-0.5
Professional and Business Services	314.8	316.3	1.5
Government	428.8	428.5	-0.3



New Job Postings from Indiana Career Connect

INDIANA
WORKFORCE
DEVELOPMENT
AND ITS **WorkOne** CENTERS

November-14	Prior Year			Current Year			Change over Prior Year			Current Year Including External Ads		
	Sept	Oct	Nov	Sept	Oct	Nov	Sept	Oct	Nov	Sept	Oct	Nov
Industry												
Utilities	24	55	32	46	30	42	92%	-45%	31%	203	237	257
Construction	145	114	80	197	165	76	36%	45%	-5%	472	298	357
Real Estate and Rental and Leasing	35	30	33	47	44	43	34%	47%	30%	797	893	607
Management of Companies and Enterprises	9	2	3	2	9	7	-78%	350%	133%	415	773	678
Other Services(Except Public Administration)	119	146	106	169	205	116	42%	40%	9%	1,287	1,171	746
Information	95	93	105	88	85	73	-7%	-9%	-30%	1,667	1,690	1,695
Accommodation and Food Services	116	79	76	92	166	88	-21%	110%	16%	2,962	2,603	1,720
Educational Services	115	86	72	143	139	104	24%	62%	44%	2,117	2,431	1,814
Wholesale Trade	79	119	81	137	127	123	73%	7%	52%	1,821	1,959	1,996
Professional, Scientific, and Technical Services	203	204	164	249	266	182	23%	30%	11%	2,723	2,601	2,288
Public Administration	82	84	74	106	102	75	29%	21%	1%	1,624	2,353	2,536
Finance and Insurance	188	182	175	240	260	177	28%	43%	1%	2,601	3,248	3,029
Manufacturing	774	834	638	1,036	984	851	34%	18%	33%	4,020	3,855	3,322
Retail Trade	245	228	172	338	288	235	38%	26%	37%	8,770	8,974	5,655
Admin. & Support & Waste Mgt. & Rem. Services	478	533	453	740	688	504	55%	29%	11%	6,157	6,629	5,925
Transportation & Warehousing	231	235	166	326	418	296	41%	78%	78%	5,360	8,263	6,031
Health Care and Social Services	542	721	500	901	995	708	66%	38%	42%	7,057	8,094	8,068
Total	3,530	3,788	2,973	4,946	5,043	3,720	40%	33%	25%	50,439	56,403	46,917



Hiring/re-hiring activity for the 3 months ending in October declined 1.0% overall compared to the same period in 2013. Admin & Support Services, despite having the largest 3-month count, hired 15% fewer workers than last year.

Industry Title**	Aug-13	Sep-13	Oct-13	3 mo total	Aug-14	Sep-14	Oct-14	3 mo total	Chg
Admin. & Support & Waste Mgt. & Rem. Services	27,289	26,842	33,862	87,993	25,359	25,239	24,052	74,650	-15%
Accommodation and Food Services	21,092	17,928	16,576	55,596	20,453	19,146	16,005	55,604	0%
Educational Services	34,169	12,854	6,836	53,859	34,652	12,889	6,721	54,262	1%
Retail Trade	19,034	18,971	18,004	56,009	19,851	17,770	16,411	54,032	-4%
Manufacturing	12,721	12,986	11,819	37,526	13,918	14,015	12,960	40,893	9%
Health Care and Social Services	11,911	10,790	10,064	32,765	12,011	12,073	10,724	34,808	6%
Construction	5,649	6,113	5,293	17,055	6,346	6,817	5,996	19,159	12%
Transportation and Warehousing	4,644	4,735	4,465	13,844	4,215	3,944	3,874	12,033	-13%
Professional, Scientific, and Technical Services	2,741	2,915	2,764	8,420	3,491	4,275	4,023	11,789	40%
Finance and Insurance	2,301	2,266	2,246	6,813	2,765	4,309	2,715	9,789	44%
Wholesale Trade	3,005	2,744	2,469	8,218	2,933	3,281	2,652	8,866	8%
Other Services(Except Public Administration)	3,028	2,753	2,476	8,257	2,883	2,851	2,220	7,954	-4%
Arts, Entertainment, and Recreation	1,869	1,754	1,478	5,101	2,352	1,511	1,323	5,186	2%
Real Estate and Rental and Leasing	1,860	1,625	1,515	5,000	1,833	1,749	1,401	4,983	0%
Public Administration	1,472	1,372	2,708	5,552	1,692	1,569	1,587	4,848	-13%
Agriculture, Forestry, Fishing and Hunting	1,346	1,266	381	2,993	771	1,100	376	2,247	-25%
Information	748	743	577	2,068	709	659	569	1,937	-6%
Total	155,510	129,319	124,279	409,108	156,678	133,670	114,025	404,373	-1%