



INDIANA
DEPARTMENT OF
WORKFORCE
DEVELOPMENT

Indiana's Employment and Labor Force Estimates May 2017

06/16/2017

Key Points

- **The Indiana Unemployment Rate is 3.2% in May 2017.**
Nationally the rate is 4.3%.
- Indiana's rate has decreased 1.4% over the year from May 2016.
- Indiana's labor force decreased over the month by 2,062 with an increase in employment of 8,946 and an unemployment decrease of 11,008.
- Indiana's labor force has increased by 6,746 over the year.
- Indiana's labor force participation rate decreased over the month and is currently 64.5%. This remains above the US Labor Force Participation rate which stands at 62.7%.
- May total private employment is 3,900 above the November 2016 peak.

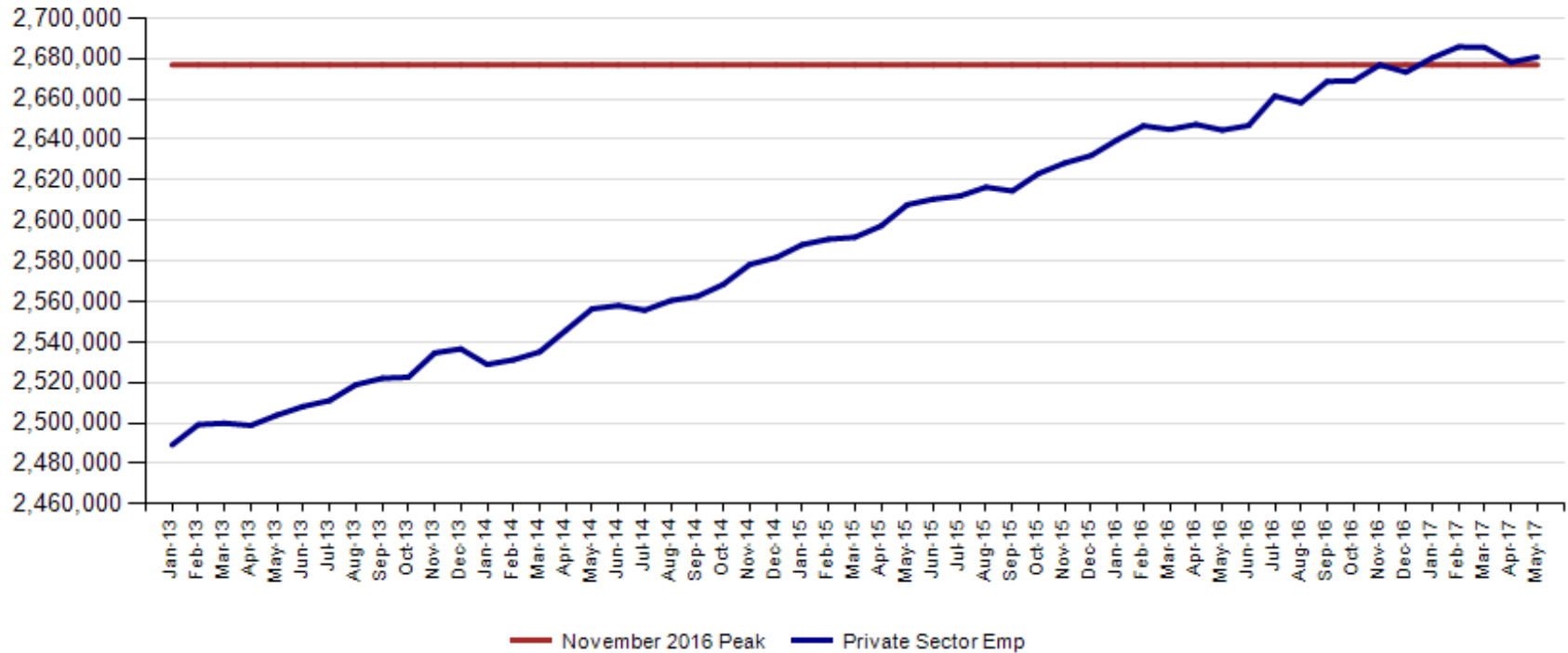
Key Points

Indiana total private employment increased by 2,500 over the month and had gains of 36,100 over the year.

- Indiana May private employment stands at 2,680,800.
- Private Educational & Health Services had gains of 3,100.
- Professional & Business Services had gains of 2,200.
- Construction had gains of 2,100.
- Financial Activities had gains of 1,100.
- The All Other category had gains of 700.
- Leisure and Hospitality had declines of 100.
- Manufacturing had declines of 2,500.
- Trade, Transportation & Utilities had declines of 4,100.

May total private employment is 3,900 above the November 2016 peak.

Indiana Private Sector Employment





May 2017 Indiana private sector employment increased by 2,500 jobs over the month and is up 36,100 over the year. Private Educational & Health Services increased by 3,100 over the month.

IN Employment Change Over the Month, Year-to-Date and Over the Year (seasonally adjusted)

Industry	May 2016	December 2016	April 2017	May 2017	Month Change	Y-to-D Change	Y-to-Y Change
Private Educational & Health Services	460.8	470.0	471.4	474.5	3.1	4.5	13.7
.....Private Educational Services	67.1	71.3	72.2	73.2	1.0	1.9	6.1
.....Health Care & Social Assistance	393.7	398.7	399.2	401.3	2.1	2.6	7.6
Manufacturing	521.9	526.9	528.3	525.8	-2.5	-1.1	3.9
Professional & Business Services	332.6	337.3	335.0	337.2	2.2	-0.1	4.6
Financial Activities	133.5	134.8	137.0	138.1	1.1	3.3	4.6
Construction	130.2	128.8	133.9	136.0	2.1	7.2	5.8
Leisure and Hospitality	306.7	310.2	307.8	307.7	-0.1	-2.5	1.0
Trade, Transportation & Utilities	593.8	598.4	598.6	594.5	-4.1	-3.9	0.7
.....Trade	450.2	455.2	456.9	454.9	-2.0	-0.3	4.7
.....Transportation, Warehousing & Utilities	143.6	143.2	141.7	139.6	-2.1	-3.6	-4.0
All Other	165.2	166.9	166.3	167.0	0.7	0.1	1.8
Total Private	2,644.7	2,673.3	2,678.3	2,680.8	2.5	7.5	36.1
Government (Includes Public Schools & Hospitals)	428.2	430.6	432.7	433.8	1.1	3.2	5.6
Total Nonfarm	3,072.9	3,103.9	3,111.0	3,114.6	3.6	10.7	41.7
United States Total Private	121,682.0	123,026.0	123,684.0	123,831.0	147.0	805.0	2,149.0



May 2017 estimates show Indiana has gained 357,600 in Private jobs since the July 2009 trough. Manufacturing has accounted for 98,900 of those jobs.

IN Statewide Estimates (seasonally adjusted) -- May 2017

Supersector	Private Empl. Peak Nov 2016	Private Empl. Trough July 2009	April 2017	May 2017	Change Since Peak	Change Since Trough	Month to Month Change
Private Educational & Health Services	472.1	411.1	471.4	474.5	2.4	63.4	3.1
.....Private Educational Services	74.2	63.3	72.2	73.2	-1.0	9.9	1.0
.....Health Care & Social Assistance	397.9	347.8	399.2	401.3	3.4	53.5	2.1
Manufacturing	524.6	426.9	528.3	525.8	1.2	98.9	-2.5
Professional & Business Services	340.7	256.9	335.0	337.2	-3.5	80.3	2.2
Financial Activities	134.9	130.7	137.0	138.1	3.2	7.4	1.1
Construction	129.1	116.5	133.9	136.0	6.9	19.5	2.1
Leisure and Hospitality	309.5	276.8	307.8	307.7	-1.8	30.9	-0.1
Trade, Transportation & Utilities	598.8	545.7	598.6	594.5	-4.3	48.8	-4.1
.....Trade	454.5	421.6	456.9	454.9	0.4	33.3	-2.0
.....Transportation, Warehousing & Utilities	144.3	124.1	141.7	139.6	-4.7	15.5	-2.1
All Other	167.2	158.6	166.3	167.0	-0.2	8.4	0.7
Total Private	2,676.9	2,323.2	2,678.3	2,680.8	3.9	357.6	2.5
Government (Includes Public Schools & Hospitals)	431.4	434.5	432.7	433.8	2.4	-0.7	1.1
Total Nonfarm	3,108.3	2,757.7	3,111.0	3,114.6	6.3	356.9	3.6
United States Total Private	122,876.0	108,171.0	123,684.0	123,831.0	955.0	15,660.0	147.0



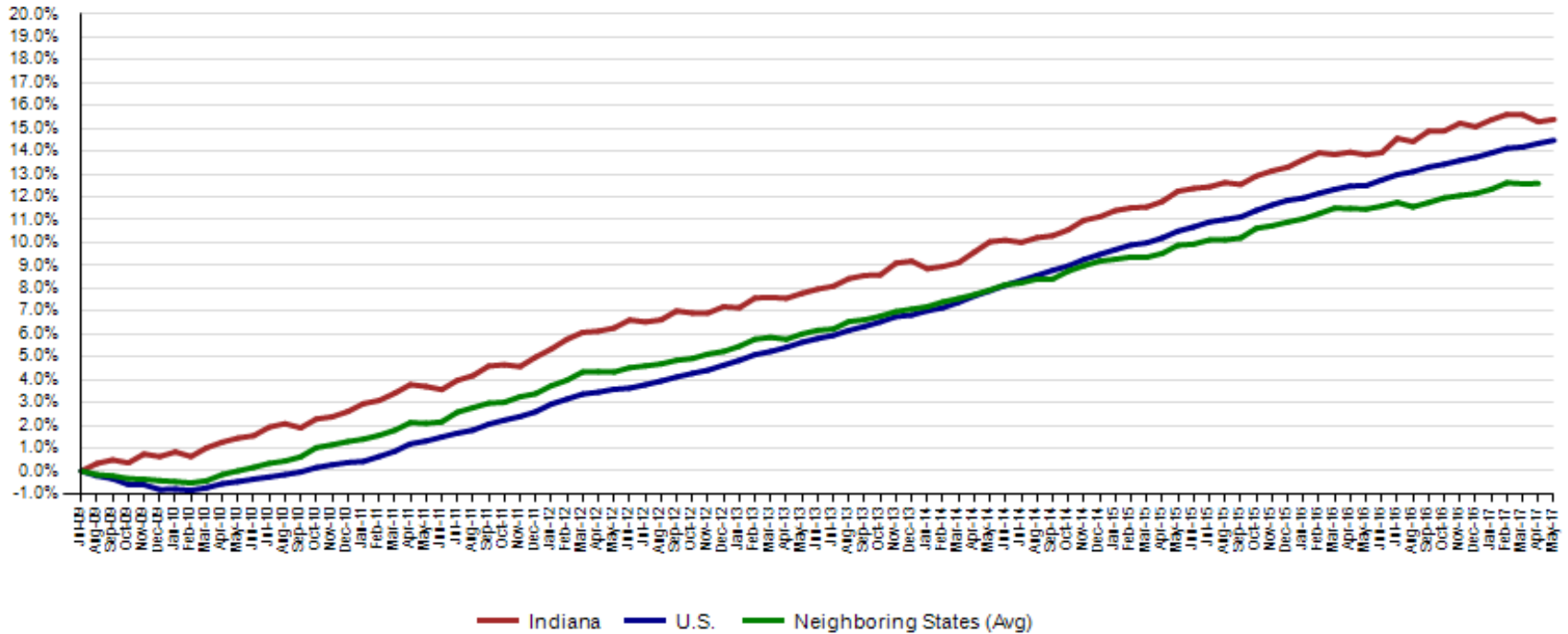
Indiana job growth over the month surpassed the national trend in private sector gains in May. Indiana Private Educational Services, Manufacturing, Financial Activities, Construction and Trade are growing faster than the US over the year.

IN Employment Change Compared to the U.S.

Industry	Indiana Month to Month	U.S. Month to Month	Indiana vs U.S. Change	Indiana Year-to-Date	U.S. Year-to-Date	Indiana vs U.S. Change	Indiana Year-to-Year	U.S. Year-to-Year	Indiana vs U.S. Change
Private Educational & Health Services	0.7%	0.2%	OVER	1.0%	0.9%	OVER	3.0%	2.3%	OVER
.....Private Educational Services	1.4%	0.4%	OVER	2.7%	1.1%	OVER	9.1%	2.5%	OVER
.....Health Care & Social Assistance	0.5%	0.2%	OVER	0.7%	0.8%	UNDER	1.9%	2.3%	UNDER
Manufacturing	-0.5%	0.0%	UNDER	-0.2%	0.4%	UNDER	0.7%	0.5%	OVER
Professional & Business Services	0.7%	0.2%	OVER	0.0%	1.1%	UNDER	1.4%	3.1%	UNDER
Financial Activities	0.8%	0.1%	OVER	2.4%	0.8%	OVER	3.4%	2.0%	OVER
Construction	1.6%	0.2%	OVER	5.6%	1.4%	OVER	4.5%	2.9%	OVER
Leisure and Hospitality	0.0%	0.2%	UNDER	-0.8%	0.9%	UNDER	0.3%	2.1%	UNDER
Trade, Transportation & Utilities	-0.7%	0.0%	UNDER	-0.7%	-0.1%	UNDER	0.1%	0.6%	UNDER
.....Trade	-0.4%	0.0%	UNDER	-0.1%	-0.1%	OVER	1.0%	0.4%	OVER
.....Transportation, Warehousing & Utils	-1.5%	0.0%	UNDER	-2.5%	0.0%	UNDER	-2.8%	1.3%	UNDER
All Other	0.4%	0.2%	OVER	0.1%	0.5%	UNDER	1.1%	1.0%	OVER
Total Private	0.1%	0.1%	UNDER	0.3%	0.7%	UNDER	1.4%	1.8%	UNDER
Government (Includes Public Schools & Hospitals)	0.3%	0.0%	OVER	0.7%	0.0%	OVER	1.3%	0.5%	OVER
Total Nonfarm	0.1%	0.1%	OVER	0.3%	0.6%	UNDER	1.4%	1.6%	UNDER

Since the low point of employment in July 2009, private sector employment growth in Indiana has surpassed the U.S. (15.4% vs. 14.5%).

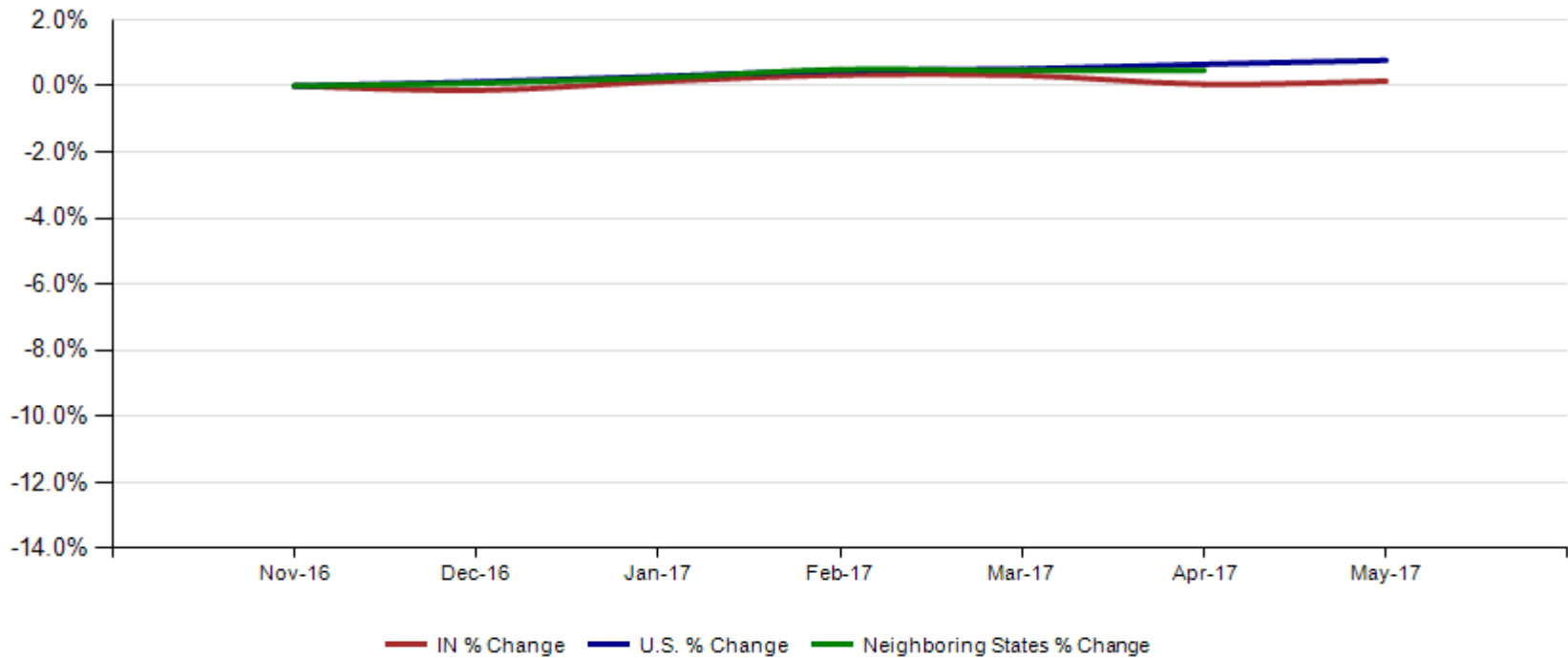
Private Sector Job Growth Since the Low Point of Employment in Indiana



Source: Current Employment Statistics, seasonally adjusted

Since Indiana's high point of employment (November 2016), private sector employment growth in Indiana has lagged the U.S. (0.1% growth vs. 0.8% nationally).

Private Sector Job Growth Since the Peak of Employment in Indiana



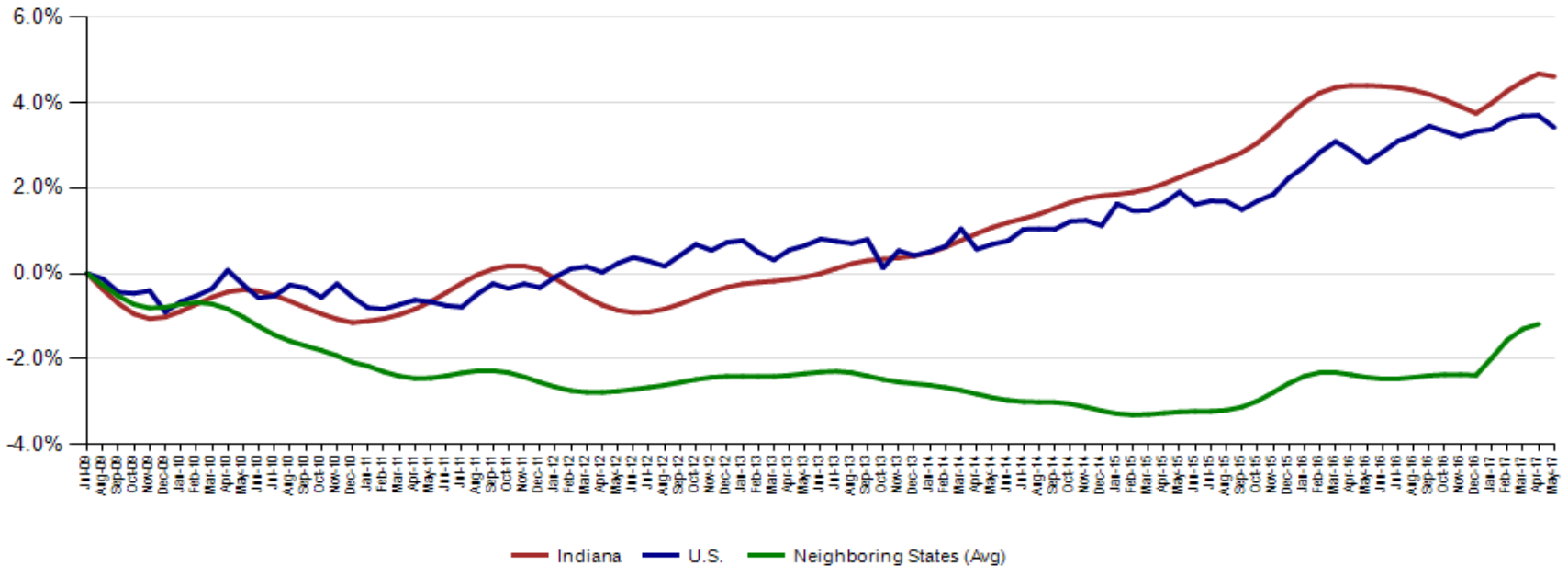


CES April Total Non Farm preliminary estimates were revised up by 4,500 jobs. Private employment was revised up by 2,100. The change from March to April is now a decrease of 6,800 in Total Non-Farm and a decrease of 7,200 in private employment.

Revisions to April 2017 Estimates						
INDUSTRY TITLE	Mar	Apr Prel	Apr Rev	Revision	Chg from Mar	Prel Chg from Mar
Total Nonfarm	3117.8	3106.5	3111.0	4.5	-6.8	-11.3
Total Private	2685.5	2676.2	2678.3	2.1	-7.2	-9.3
Goods Producing	670.9	667.4	668.7	1.3	-2.2	-3.5
Service-Providing	2446.9	2439.1	2442.3	3.2	-4.6	-7.8
Private Service Providing	2014.6	2008.8	2009.6	0.8	-5.0	-5.8
Construction	134.1	133.8	133.9	0.1	-0.2	-0.3
Manufacturing	530.3	527.1	528.3	1.2	-2.0	-3.2
Trade, Transportation, and Utilities	600.8	598.9	598.6	-0.3	-2.2	-1.9
Wholesale Trade	118.3	120.0	120.2	0.2	1.9	1.7
Retail Trade	339.6	337.4	336.7	-0.7	-2.9	-2.2
Transportation, Warehousing, and Utilities	142.9	141.5	141.7	0.2	-1.2	-1.4
Information	32.6	31.2	31.0	-0.2	-1.6	-1.4
Financial Activities	136.2	137.0	137.0	0.0	0.8	0.8
Finance and Insurance	100.6	101.8	101.7	-0.1	1.1	1.2
Real Estate and Rental and Leasing	35.6	35.2	35.3	0.1	-0.3	-0.4
Professional and Business Services	334.9	333.9	335.0	1.1	0.1	-1.0
Professional, Scientific, and Technical Services	113.5	113.7	113.9	0.2	0.4	0.2
Management of Companies and Enterprises	34.5	34.4	34.5	0.1	0.0	-0.1
Admin & Support & Waste Mgmt & Remediation Services	186.9	185.8	186.6	0.8	-0.3	-1.1
Education and Health Services	473.6	470.3	471.4	1.1	-2.2	-3.3
Educational Services	73.2	72.3	72.2	-0.1	-1.0	-0.9
Health Care and Social Assistance	400.4	398.0	399.2	1.2	-1.2	-2.4
Leisure and Hospitality	307.5	308.3	307.8	-0.5	0.3	0.8
Other Services	129.0	129.2	128.8	-0.4	-0.2	0.2
Government	432.3	430.3	432.7	2.4	0.4	-2.0

Indiana's May seasonally adjusted labor force is now at 3,335,621 and the number of employed is at 3,227,958. An estimated 107,663 individuals are currently unemployed and seeking employment. The preliminary May employed numbers are new highs for Indiana.

Labor Force Change Since July 2009 Indiana Trough (seasonally adjusted)



The May Indiana labor force participation rate is now 64.5%
and the U.S. Rate is now at 62.7%



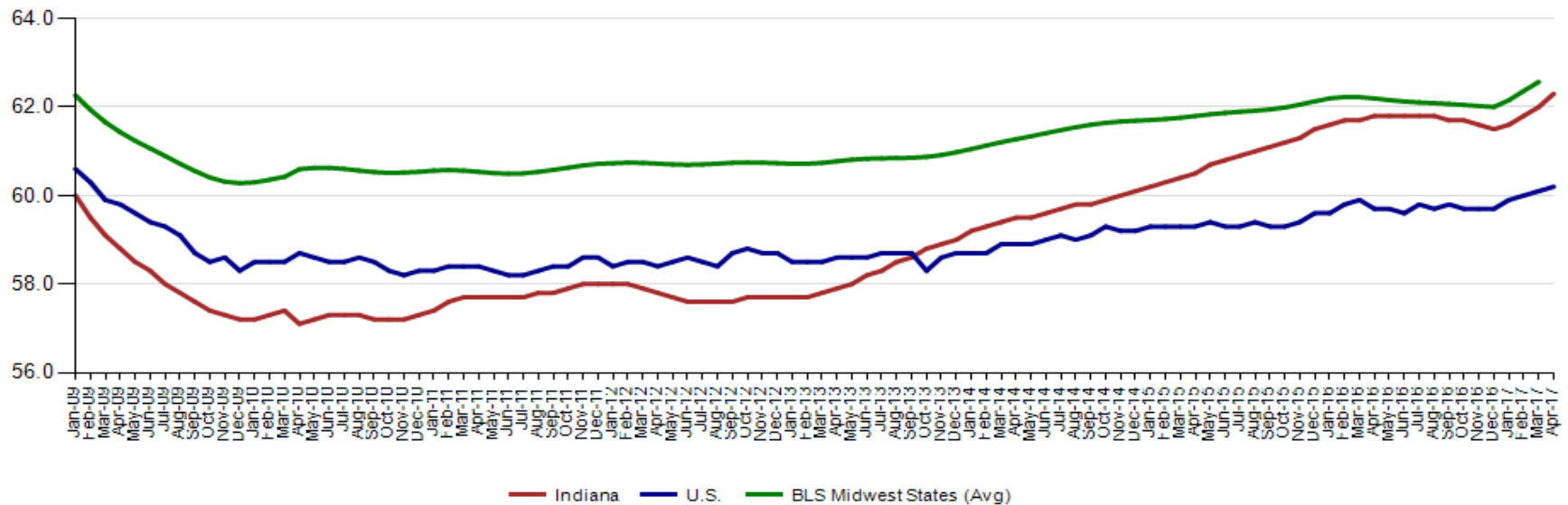
INDIANA
DEPARTMENT OF
WORKFORCE
DEVELOPMENT

Labor Force Participation Rate



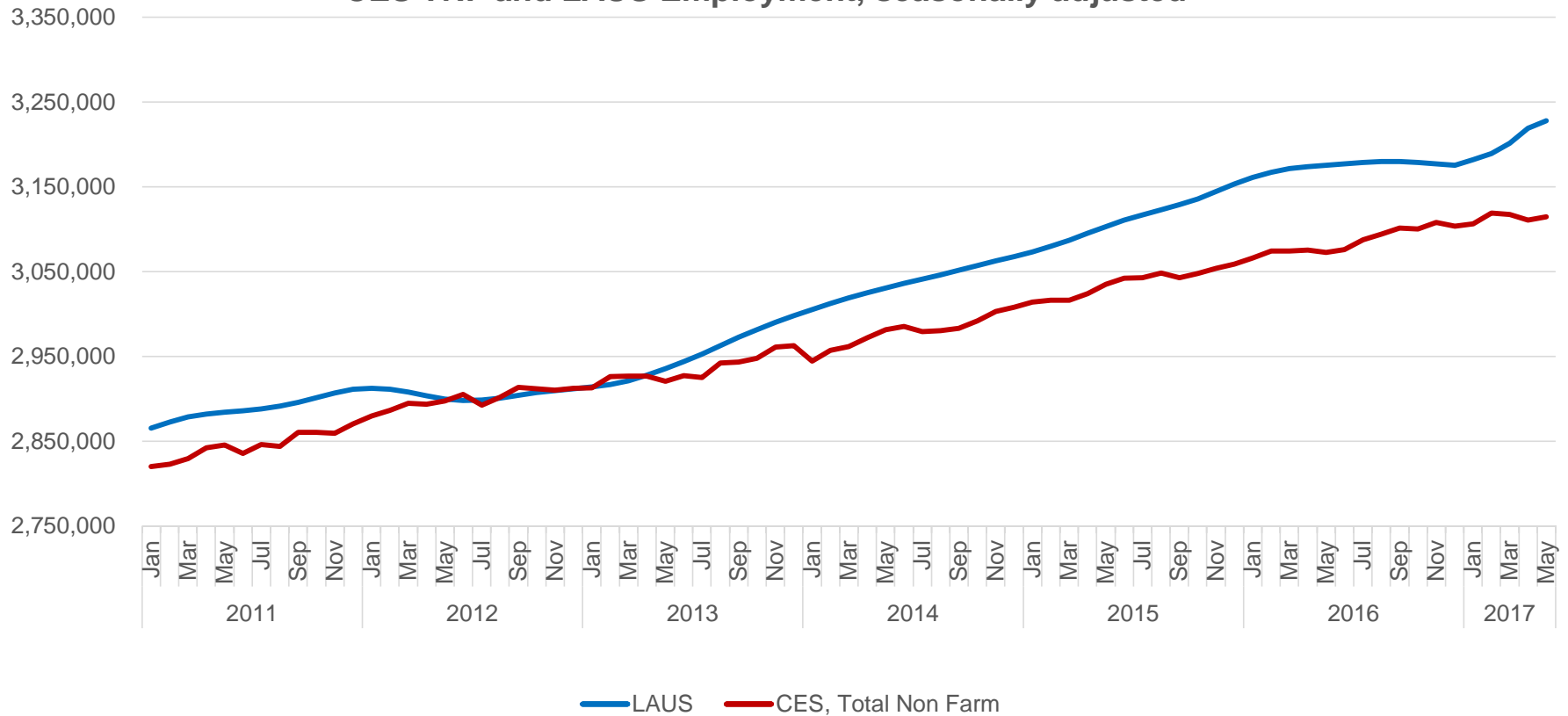
Indiana's employment to population May 2017 rate is 62.4% The May U.S. employment to population rate is 60% The BLS Midwest Regional States held at 62.7% (April 2016).

Employment to Population Ratio (seasonally adjusted)



Historical comparison of CES Total Non-Farm and Seasonally Adjusted Labor Force Employment.

CES TNF and LAUS Employment, seasonally adjusted





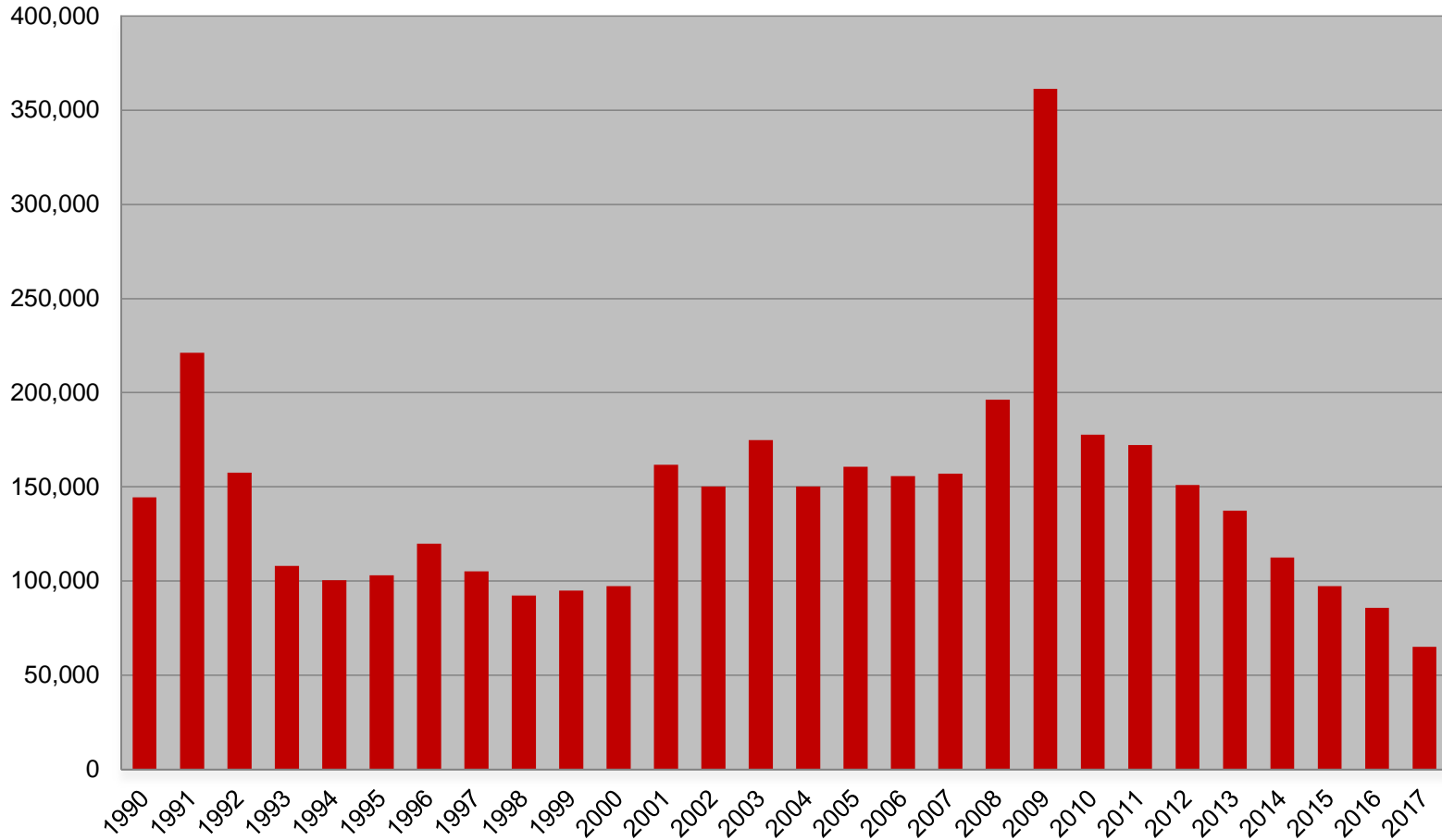
Midwest Comparison Rates: Seasonally Adjusted Over the Year and Over the Month (confidential and preliminary)

	May 2016	April 2017	May 2017	Monthly change	Yearly change
Indiana	4.6%	3.6%	3.2%	-0.4%	-1.4%
U.S.	4.7%	4.4%	4.3%	-0.1%	-0.4%
Illinois	5.9%	4.7%		-4.7%	-5.9%
Kentucky	5.0%	5.1%		-5.1%	-5.0%
Michigan	4.8%	4.7%	4.2%	-0.5%	-0.6%
Ohio	4.9%	5.0%	4.9%	-0.1%	0.0%

*2016 Benchmark



Weekly Initial Claims – Week 22





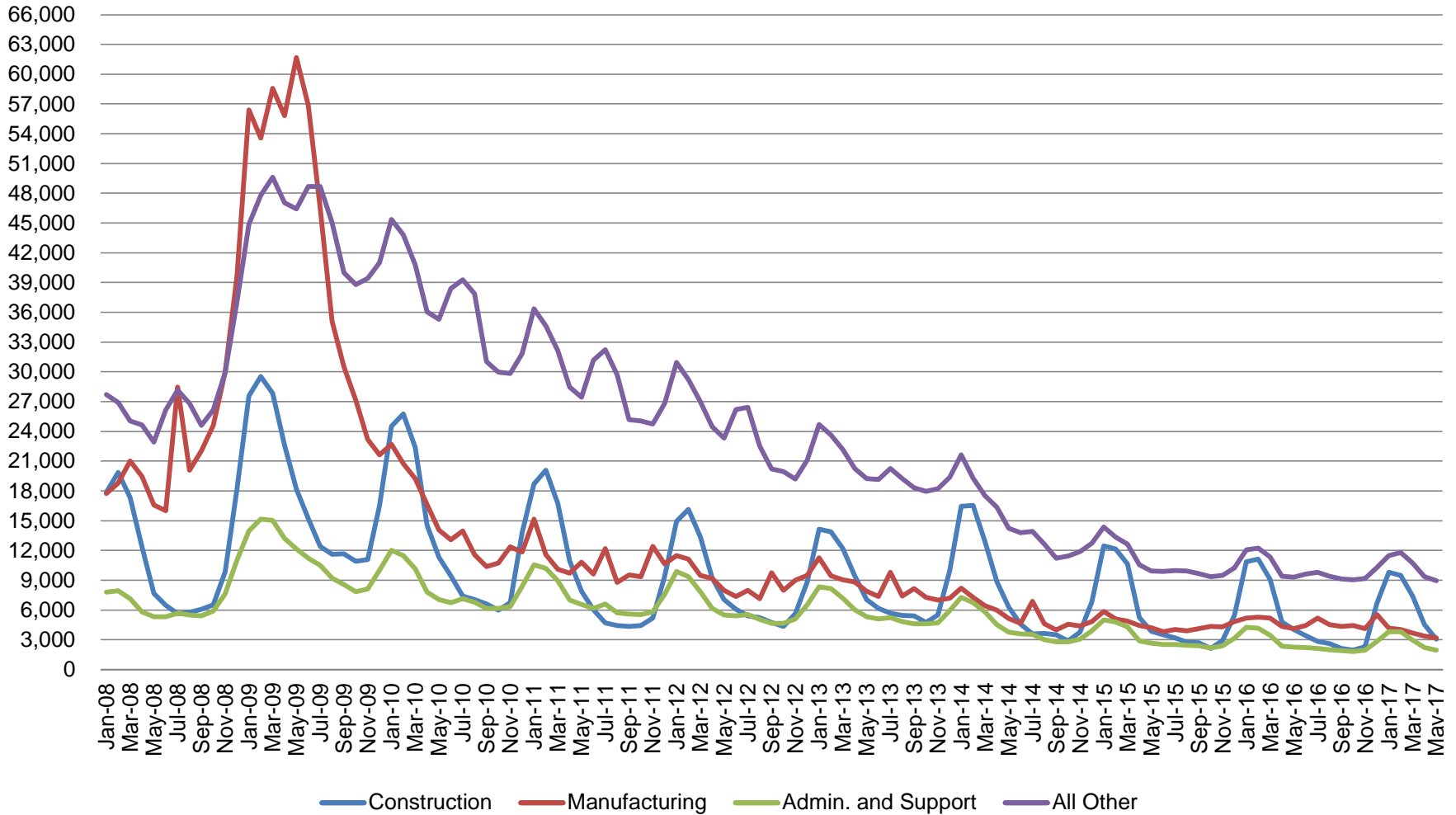
Regular UI Claims – Reference Week (12th of the month) Input to LAUS Unemployment Rate Model Declines over the month - and over the year

Without earnings – Reference week claims

	2006	2007	2008	2009	2010	2011	2012	2013	2014	2015	2016	2017	OTM Change	OTY Change
JANUARY	65,898	71,296	75,294	150,888	105,910	84,706	71,042	63,223	49,377	41,333	36,555	33,137	8,538	(3,418)
FEBRUARY	67,347	75,432	78,068	154,388	103,432	80,852	69,570	60,183	52,316	39,282	36,909	32,463	(674)	(4,446)
MARCH	59,716	64,936	74,759	157,257	93,469	71,696	60,752	54,578	45,928	35,755	32,439	32,141	(322)	(298)
APRIL	48,103	53,325	64,948	143,842	74,481	59,036	51,652	48,548	39,717	25,597	23,895	21,998	(10,143)	(1,897)
MAY	46,779	46,002	55,480	141,174	66,779	54,680	46,328	42,997	32,460	22,807	22,300	19,152	(2,846)	(3,148)
JUNE	45,533	46,350	57,228	136,670	67,996	55,021	46,820	41,722	29,524	22,030	22,025			
JULY	53,424	51,141	72,032	121,336	69,447	58,031	47,268	44,597	30,845	22,341	22,326			
AUGUST	45,021	43,887	61,985	103,509	62,976	51,710	42,134	39,998	26,061	21,472	20,737			
SEPTEMBER	41,247	42,500	61,548	92,680	58,280	46,824	41,955	39,563	23,685	20,941	19,372			
OCTOBER	42,487	42,313	67,306	86,275	58,317	46,909	39,467	37,778	23,768	19,917	19,143			
NOVEMBER	43,868	45,362	81,466	82,451	58,846	51,201	41,018	38,517	25,315	21,199	19,547			
DECEMBER	53,566	54,201	109,651	91,814	65,279	55,104	46,371	42,484	30,982	26,249	24,599			

Regular UI Claims by Industry

For the Reference Week of Each Month



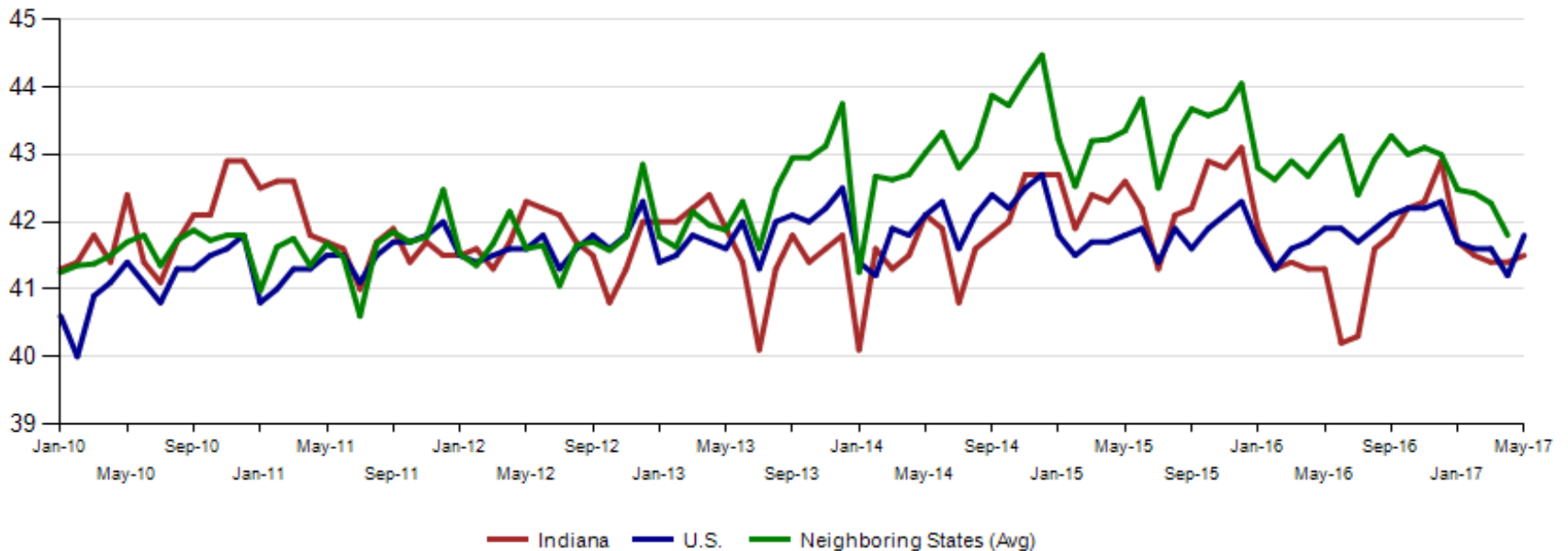


Internal and external Indiana Career Connect job orders are 50,718 in May. Health Care & Social Services, Retail Trade and Administrative & Support & Waste Management & Remediation Services (this includes temp help services) top the list.

NAICS_title	May-2017	Prior Year			Current Year			Change over Prior Year			Current Year Including External			Current Duration (days)
		March	April	May	March	April	May	March	April	May	March	April	May	May
Total		9,877	8,946	8,882	10,753	9,460	10,417	9%	6%	17%	68,334	64,585	50,718	52
Health Care and Social Services		2,113	2,017	1,706	2,064	1,826	1,953	-2%	-9%	14%	12,589	13,921	10,101	41
Retail Trade		865	718	802	739	716	704	-15%	0%	-12%	9,763	10,625	6,754	43
Admin. & Support & Waste Mgt. & Rem. Services		1,280	1,209	1,233	1,431	1,204	1,185	12%	0%	-4%	9,876	8,801	6,619	52
Manufacturing		1,712	1,630	1,570	1,825	1,605	1,757	7%	-2%	12%	5,050	4,338	3,908	58
Educational Services		612	470	434	599	513	834	-2%	9%	92%	3,292	3,282	3,802	21
Accommodation and Food Services		186	231	364	618	550	873	232%	138%	140%	4,463	3,407	3,435	34
Professional, Scientific, and Technical Services		778	633	641	889	825	780	14%	30%	22%	4,573	3,544	3,207	71
Finance and Insurance		223	187	242	274	187	225	23%	0%	-7%	2,607	2,821	2,368	88
Transportation & Warehousing		387	432	444	421	382	439	9%	-12%	-1%	3,600	3,459	2,280	84
Wholesale Trade		371	389	361	524	528	449	41%	36%	24%	2,439	2,261	1,880	36
Public Administration		196	240	208	245	196	253	25%	-18%	22%	3,447	2,669	1,793	77
Information		299	204	253	256	214	224	-14%	5%	-11%	1,767	1,378	1,159	38
Real Estate and Rental and Leasing		146	107	107	207	125	121	42%	17%	13%	1,505	1,030	857	64
Other Services(Except Public Administration)		238	127	199	253	203	203	6%	60%	2%	1,021	821	730	125
Construction		214	163	171	207	189	219	-3%	16%	28%	775	690	689	77
Management of Companies and Enterprises		20	23	15	18	13	17	-10%	-43%	13%	1,041	776	555	102
Utilities		127	95	72	90	109	111	-29%	15%	54%	254	293	261	36
Arts, Entertainment, and Recreation		50	19	13	17	43	16	-66%	126%	23%	98	367	172	56
Agriculture, Forestry, Fishing and Hunting		40	30	31	57	21	45	43%	-30%	45%	86	52	87	86
Mining		12	11	6	6	1	5	-50%	-91%	-17%	75	40	57	50
Unallocated		8	11	10	13	10	4	63%	-9%	-60%	13	10	4	123

May 2017 average weekly hours for Indiana manufacturing production decreased to 41.5 and are now behind the national manufacturing weekly hours of 41.8. Neighboring states were at 41.8 hours (April data).

Avg. Weekly Manufacturing Production Hours (non seasonally adjusted)





INDIANA
DEPARTMENT OF
WORKFORCE
DEVELOPMENT

IN Metropolitan Area Employment Estimates

MSA	May 2000	May 2016	April 2017	May 2017	May 2017 Change	Change since 2000	% Chg since 2000	Annual Change	Annual % Change
Elkhart-Goshen	129,600	131,800	135,500	138,100	2,600	8,500	6.6%	6,300	4.8%
Columbus	45,200	52,200	53,900	54,300	400	9,100	20.1%	2,100	4.0%
Kokomo	51,500	41,300	42,500	42,700	200	-8,800	-17.1%	1,400	3.4%
Lafayette-West Lafayette	93,900	103,000	106,500	105,400	-1,100	11,500	12.2%	2,400	2.3%
Bloomington	70,100	73,900	78,800	75,500	-3,300	5,400	7.7%	1,600	2.2%
Indianapolis-Carmel-Anderson	905,100	1,047,200	1,057,600	1,068,900	11,300	163,800	18.1%	21,700	2.1%
Fort Wayne	221,900	220,500	221,700	223,500	1,800	1,600	0.7%	3,000	1.4%
Gary Division	286,200	278,400	278,900	281,600	2,700	-4,600	-1.6%	3,200	1.1%
Evansville	162,800	159,000	160,400	160,800	400	-2,000	-1.2%	1,800	1.1%
Terre Haute	78,000	71,100	71,400	71,600	200	-6,400	-8.2%	500	0.7%
Muncie	59,000	51,100	52,200	51,300	-900	-7,700	-13.1%	200	0.4%
South Bend	152,000	142,700	142,700	142,900	200	-9,100	-6.0%	200	0.1%
Michigan City	50,500	42,000	40,800	41,300	500	-9,200	-18.2%	-700	-1.7%