



INDIANA  
**WORKFORCE**  
DEVELOPMENT  
AND ITS **WorkOne** CENTERS

# Indiana's Employment and Labor Force Estimates May 2016

*06/15/2016*



# Key Points

## Headline Points

- Indiana's labor force increased 7,726 over the month, with an increase in employment of 12,932. Unemployment decreased by 5,206.
- Indiana's labor force has gained 69,205 with 52,375 in employment and 16,830 in unemployment since January 2016.
- The Indiana Unemployment Rate stands at 5.0% in May 2016.
- Indiana total private employment decreased 5,700 over the month, but with a gain of 38,300 over the year.
- Indiana's Employment to Population Ratio is 62.1%. This is the highest it has been since September of 2008. The US stands at 59.7%.



# Key Points

## **The Indiana Unemployment Rate stands at 5.0% in May 2016.**

Nationally the rate is 4.7%.

- Indiana's rate has seen an increase of 0.2% over the year from May 2015.
- Indiana's labor force increased 7,726 over the month, with an increase in employment of 12,932. Unemployment decreased by 5,206.
- Indiana's labor force has gained 69,205 with 52,375 in employment and 16,830 in unemployment since the start of the year.
- Indiana's Labor Force is up 111,763 over the year, and has gained 186,527 since January 2013.
- Indiana's Labor Force Participation rate increased by 0.1 to 65.4% over the month. This remains above the US Labor Force Participation rate which stands at 62.6%.



# Key Points

Total private employment stands at 28,100 above the March 2000 Peak. This is the 11<sup>th</sup> month above the prior peak.

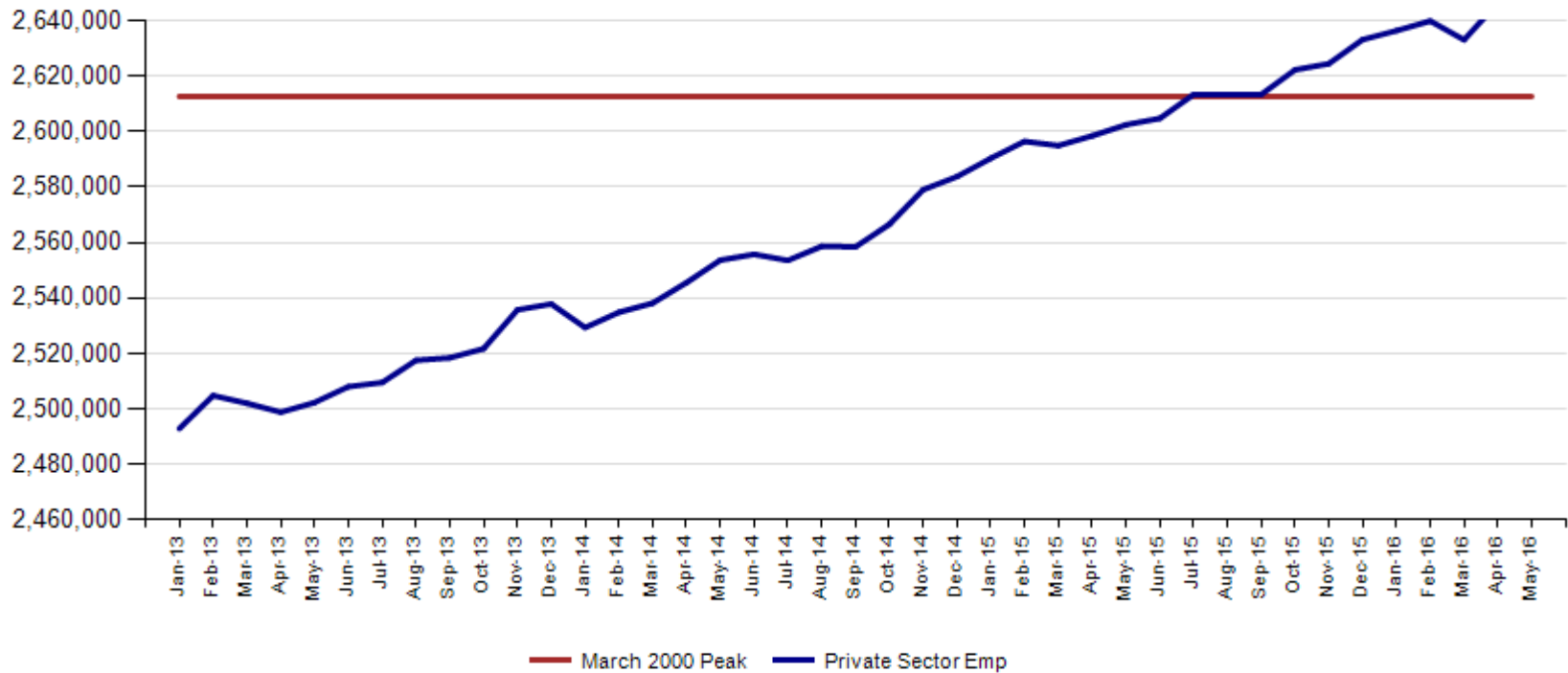
- Indiana total private employment declined 5,700 over the month, with a gain of 38,300 over the year.
- Over the month gains were strongest in Trade, Transportation and Utilities gaining 3,700 with the majority of gains in Trade 4,900 balanced by a loss in of 1,200 in Transportation Warehousing and Utilities.
- Financial Activities saw gains of 300.
- Construction remained flat over the month.
- Professional & Business Service saw declines of 3,400.
- Manufacturing as well as Leisure and Hospitality both saw declines of 2,100.
- Private Education & Health Services saw declines of 1,100 with most declines in Private Education Services 2,300 while Health Care & Social Assistant balanced out the Sector with a gain of 1,200.
- Total Nonfarm saw declines of 7,600 over the month.

**Total Private Employment is at 2,640,700.** Private employment is up 147,800 since January 2013.



Total private employment stands at 28,100 above the March 2000 Peak. This is the 11<sup>th</sup> month above the prior peak.

**Indiana Private Sector Employment**





Indiana private sector employment decreased 5,700 jobs over the month but is up 38,300 over the year. Trade, Transportation and Utilities had the biggest increases with gains of 3,700 jobs over the month. Financial Services also gained 300.

### IN Employment Change Over the Month, Year-to-Date and Over the Year (seasonally adjusted)

Industry	May 2015	December 2015	April 2016	May 2016	Month Change	Y-to-D Change	Y-to-Y Change
Private Educational & Health Services	447.8	459.5	466.5	465.4	-1.1	5.9	17.6
.....Private Educational Services	68.0	73.2	73.6	71.3	-2.3	-1.9	3.3
.....Health Care & Social Assistance	379.8	386.3	392.9	394.1	1.2	7.8	14.3
Manufacturing	517.4	520.2	519.8	517.7	-2.1	-2.5	0.3
Professional & Business Services	330.9	327.9	326.6	323.2	-3.4	-4.7	-7.7
Financial Activities	130.2	131.3	131.8	132.1	0.3	0.8	1.9
Construction	127.0	131.0	130.9	130.9	0.0	-0.1	3.9
Leisure and Hospitality	300.6	304.6	307.6	305.5	-2.1	0.9	4.9
Trade, Transportation & Utilities	581.4	592.9	597.7	601.4	3.7	8.5	20.0
.....Trade	442.7	447.6	454.2	459.1	4.9	11.5	16.4
.....Transportation, Warehousing & Utilities	138.7	145.3	143.5	142.3	-1.2	-3.0	3.6
All Other	167.1	165.7	165.5	164.5	-1.0	-1.2	-2.6
Total Private	2,602.4	2,633.1	2,646.4	2,640.7	-5.7	7.6	38.3
Government (Includes Public Schools & Hospitals)	426.2	426.6	428.5	426.6	-1.9	0.0	0.4
Total Nonfarm	3,028.6	3,059.7	3,074.9	3,067.3	-7.6	7.6	38.7
United States Total Private	119,508.0	121,106.0	121,780.0	121,805.0	25.0	699.0	2,297.0



Total nonfarm is 55,100 over the March 2000 peak. Manufacturing and Construction show combined losses of 176,600 over this time frame. Professional Business Services and Leisure and Hospitality have gained 101,000 since the peak.

IN Statewide Estimates (seasonally adjusted) -- May 2016

Supersector	Private Empl. Peak March 2000	Private Empl. Trough July 2009	April 2016	May 2016	Change Since Peak	Change Since Trough	Month to Month Change
Private Educational & Health Services	330.1	411.1	466.5	465.4	135.3	54.3	-1.1
.....Private Educational Services	52.2	63.3	73.6	71.3	19.1	8.0	-2.3
.....Health Care & Social Assistance	277.9	347.8	392.9	394.1	116.2	46.3	1.2
Manufacturing	671.1	427.9	519.8	517.7	-153.4	89.8	-2.1
Professional & Business Services	260.5	255.9	326.6	323.2	62.7	67.3	-3.4
Financial Activities	145.7	130.7	131.8	132.1	-13.6	1.4	0.3
Construction	154.1	116.5	130.9	130.9	-23.2	14.4	0.0
Leisure and Hospitality	267.2	276.8	307.6	305.5	38.3	28.7	-2.1
Trade, Transportation & Utilities	617.5	545.7	597.7	601.4	-16.1	55.7	3.7
.....Trade	485.1	421.6	454.2	459.1	-26.0	37.5	4.9
.....Transportation, Warehousing & Utilities	132.4	124.1	143.5	142.3	9.9	18.2	-1.2
All Other	166.4	158.6	165.5	164.5	-1.9	5.9	-1.0
Total Private	2,612.6	2,323.2	2,646.4	2,640.7	28.1	317.5	-5.7
Government (Includes Public Schools & Hospitals)	404.6	434.5	428.5	426.6	22.0	-7.9	-1.9
Total Nonfarm	3,017.2	2,757.7	3,074.9	3,067.3	50.1	309.6	-7.6
United States Total Private	110,875.0	108,170.0	121,780.0	121,805.0	10,930.0	13,635.0	25.0



Indiana job growth over the year is under the National trend in private sector gains in May. Private Educational & Health Services and Trade Transportation and Utilities both are both growing faster than the US over the year.

### IN Employment Change Compared to the U.S.

Industry	Indiana Month to Month	U.S. Month to Month	Indiana vs U.S. Change	Indiana Year-to-Date	U.S. Year-to-Date	Indiana vs U.S. Change	Indiana Year-to-Year	U.S. Year-to-Year	Indiana vs U.S. Change
Private Educational & Health Services	-0.2%	0.3%	UNDER	1.3%	1.2%	OVER	3.9%	3.1%	OVER
.....Private Educational Services	-3.1%	0.3%	UNDER	-2.6%	1.1%	UNDER	4.9%	2.6%	OVER
.....Health Care & Social Assistance	0.3%	0.3%	OVER	2.0%	1.2%	OVER	3.8%	3.2%	OVER
Manufacturing	-0.4%	-0.1%	UNDER	-0.5%	-0.3%	UNDER	0.1%	-0.3%	OVER
Professional & Business Services	-1.0%	0.0%	UNDER	-1.4%	0.6%	UNDER	-2.3%	2.7%	UNDER
Financial Activities	0.2%	0.1%	OVER	0.6%	0.8%	UNDER	1.5%	1.9%	UNDER
Construction	0.0%	-0.2%	OVER	-0.1%	0.7%	UNDER	3.1%	3.4%	UNDER
Leisure and Hospitality	-0.7%	0.1%	UNDER	0.3%	0.7%	UNDER	1.6%	2.6%	UNDER
Trade, Transportation & Utilities	0.6%	0.0%	OVER	1.4%	0.6%	OVER	3.4%	1.6%	OVER
.....Trade	1.1%	0.0%	OVER	2.6%	0.8%	OVER	3.7%	1.7%	OVER
.....Transportation, Warehousing & Utils	-0.8%	0.0%	UNDER	-2.1%	-0.1%	UNDER	2.6%	1.1%	OVER
All Other	-0.6%	-0.5%	UNDER	-0.7%	-0.6%	UNDER	-1.6%	-0.7%	UNDER
Total Private	-0.2%	0.0%	UNDER	0.3%	0.6%	UNDER	1.5%	1.9%	UNDER
Government (Includes Public Schools & Hospitals)	-0.4%	0.1%	UNDER	0.0%	0.2%	UNDER	0.1%	0.5%	UNDER
Total Nonfarm	-0.2%	0.0%	UNDER	0.2%	0.5%	UNDER	1.3%	1.7%	UNDER



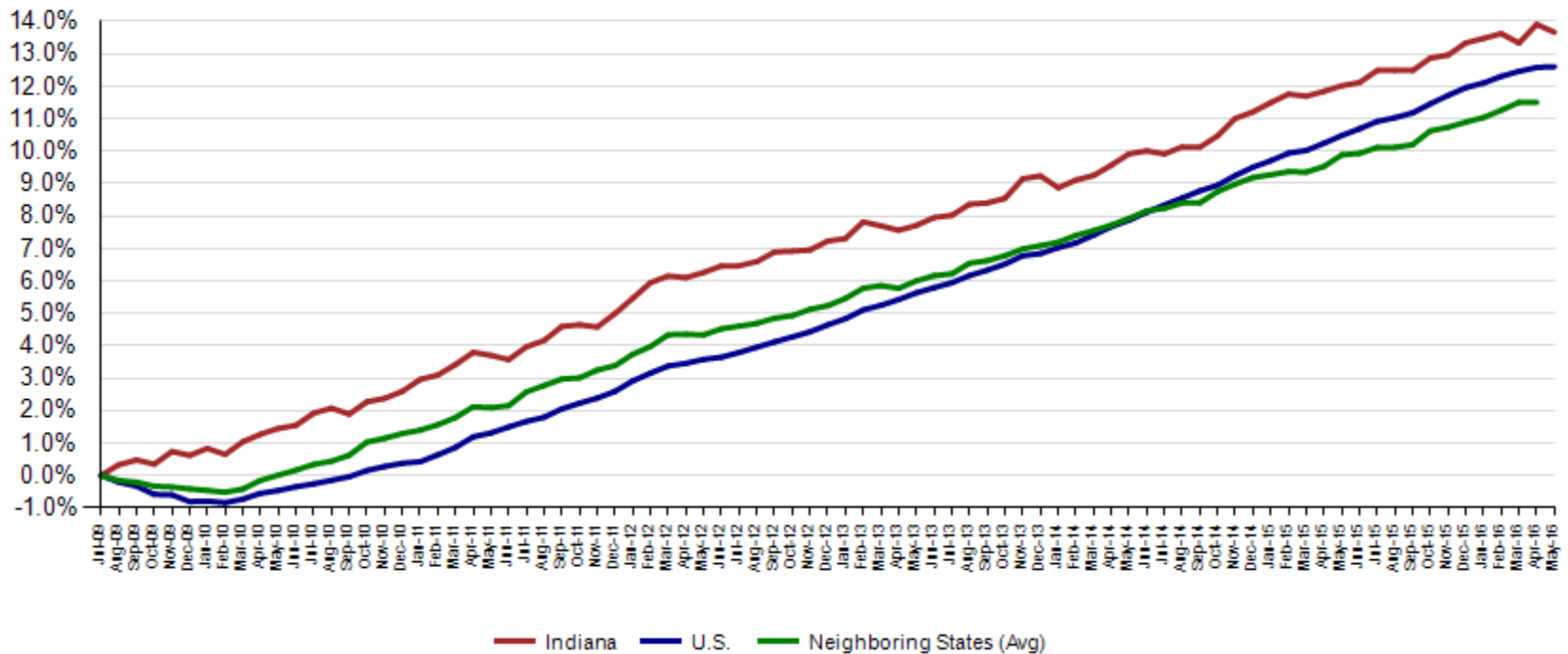


April Total Private preliminary estimates were revised upward by 1,400. This is an increase from March to April of 13,400.

Revisions to April 2016 Estimates						
INDUSTRY TITLE	Mar	Apr Prel	Apr Rev	Revision	Chg from Mar	Prel Chg from Mar
Total Nonfarm	3062.1	3073.1	3074.9	1.8	12.8	11.0
Total Private	2633.0	2645.0	2646.4	1.4	13.4	12.0
Goods Producing	652.9	657.1	656.9	-0.2	4.0	4.2
Service-Providing	2409.2	2416.0	2418.0	2.0	8.8	6.8
Private Service Providing	1980.1	1987.9	1989.5	1.6	9.4	7.8
Construction	129.8	130.8	130.9	0.1	1.1	1.0
Manufacturing	516.8	520.1	519.8	-0.3	3.0	3.3
Durable Goods	368.4	370.3	370.1	-0.2	1.7	1.9
Non-Durable Goods	148.4	149.8	149.7	-0.1	1.3	1.4
Trade, Transportation, and Utilities	594.1	597.4	597.7	0.3	3.6	3.3
Wholesale Trade	118.9	118.9	118.7	-0.2	-0.2	0.0
Retail Trade	334.1	335.4	335.5	0.1	1.4	1.3
Transportation, Warehousing, and Utilities	141.1	143.1	143.5	0.4	2.4	2.0
Information	31.9	31.7	31.7	0.0	-0.2	-0.2
Financial Activities	131.7	132.0	131.8	-0.2	0.1	0.3
Finance and Insurance	96.9	98.0	97.9	-0.1	1.0	1.1
Real Estate and Rental and Leasing	34.8	34.0	33.9	-0.1	-0.9	-0.8
Professional and Business Services	322.1	324.8	326.6	1.8	4.5	2.7
Professional, Scientific, and Technical Services	110.4	110.1	110.2	0.1	-0.2	-0.3
Management of Companies and Enterprises	33.3	34.0	33.9	-0.1	0.6	0.7
Admin & Support & Waste Mgmt & Remediation Services	178.4	180.7	182.5	1.8	4.1	2.3
Education and Health Services	464.3	466.2	466.5	0.3	2.2	1.9
Educational Services	72.1	73.6	73.6	0.0	1.5	1.5
Health Care and Social Assistance	392.2	392.6	392.9	0.3	0.7	0.4
Leisure and Hospitality	307.7	308.9	307.6	-1.3	-0.1	1.2
Other Services	128.3	126.9	127.6	0.7	-0.7	-1.4
Government	429.1	428.1	428.5	0.4	-0.6	-1.0

Since the low point of employment (July 2009), private sector employment growth in Indiana has surpassed the U.S. (13.7% vs. 12.6%).

**Private Sector Job Growth Since the Low Point of Employment in Indiana**

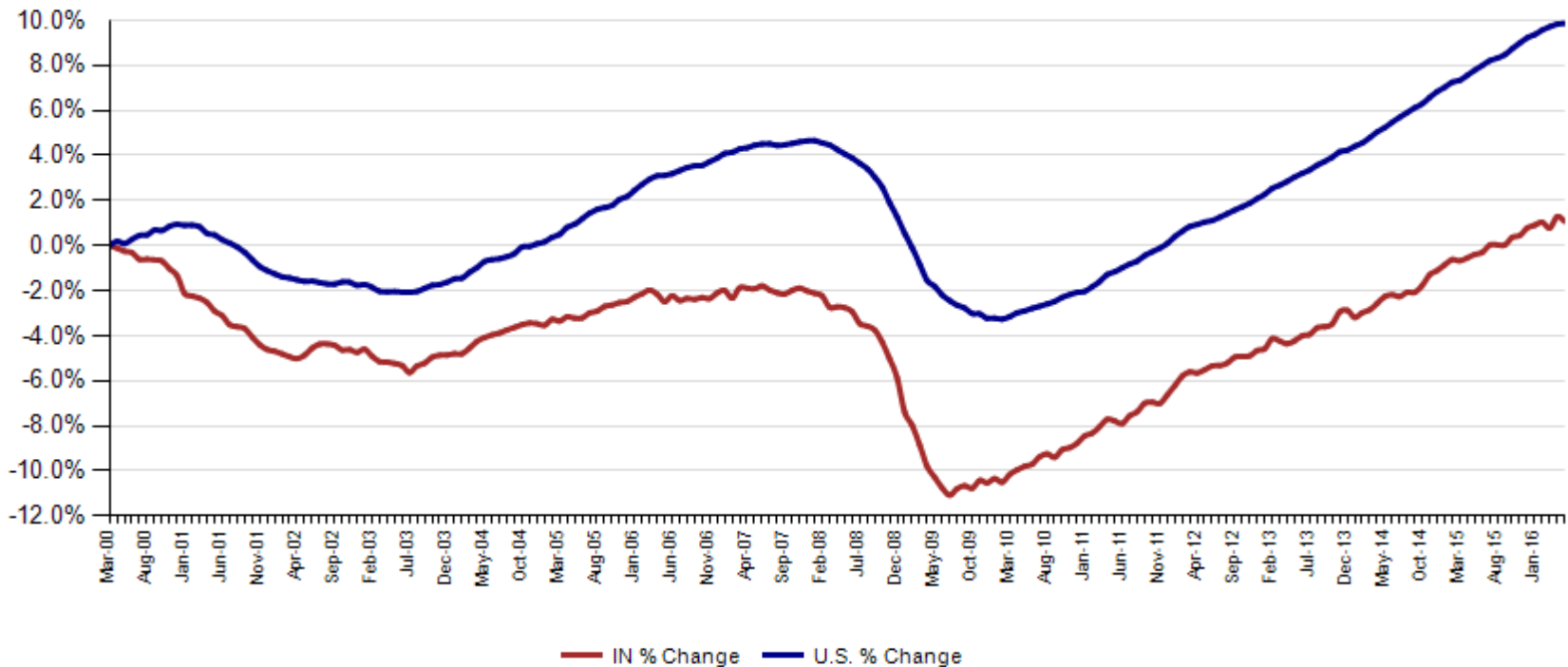


Source: Current Employment Statistics, seasonally adjusted



Since Indiana's high point of employment (March 2000), private sector employment growth in Indiana has lagged the U.S. (1.1% growth vs. 9.9% nationally).

**Private Sector Job Growth Since the Peak of Employment in Indiana**

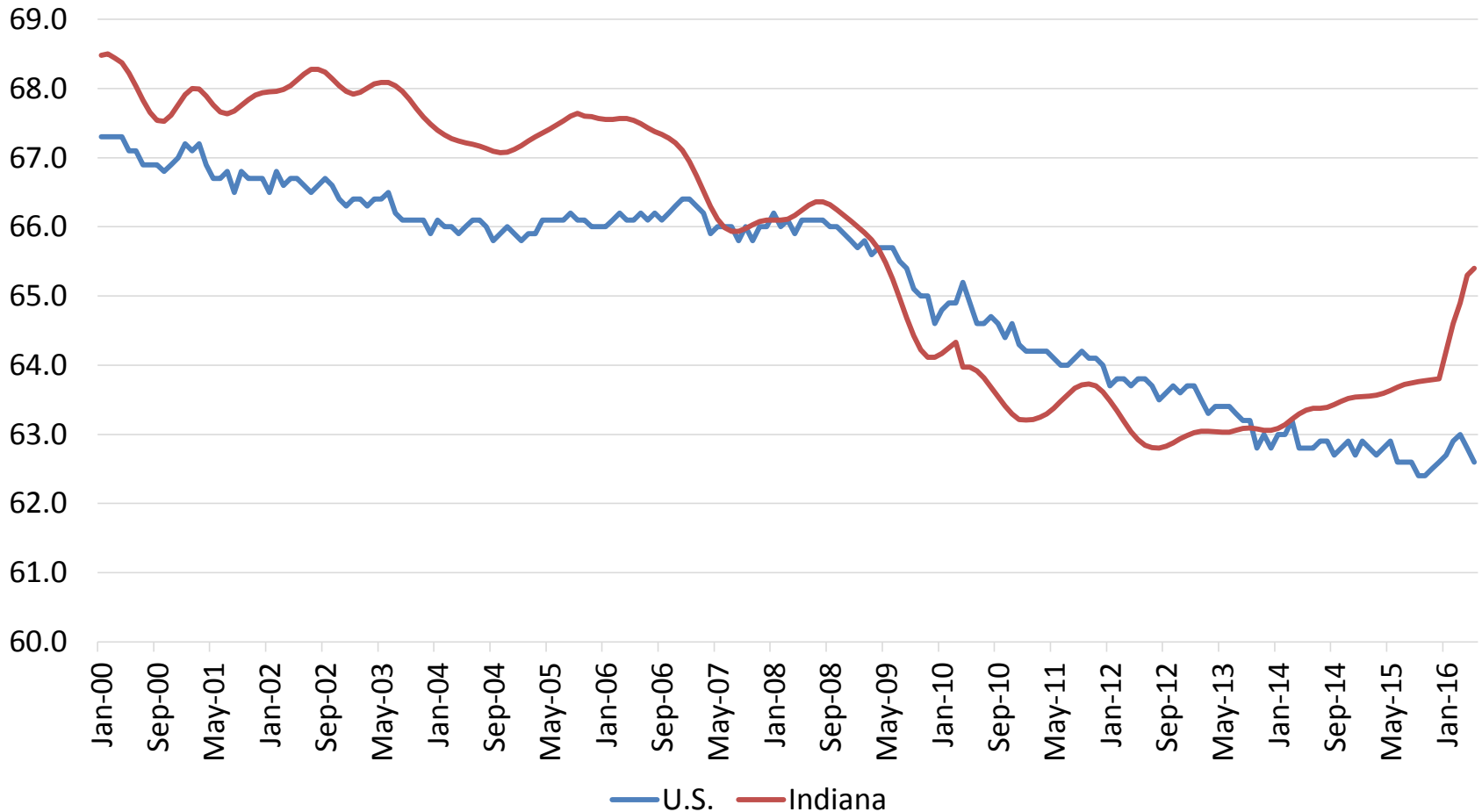


Source: Current Employment Statistics, seasonally adjusted



Indiana's Labor Force gained 7,726 over the month, 111,763 over the year, and 186,527 since January 2013. Indiana's labor force stands at 3,369,739. Indiana's Labor Force Participation Rate is now at 65.4%. This is the highest it has been since May 2009. The U.S. National Rate stands at 62.6%.

### Labor Force Participation Rate





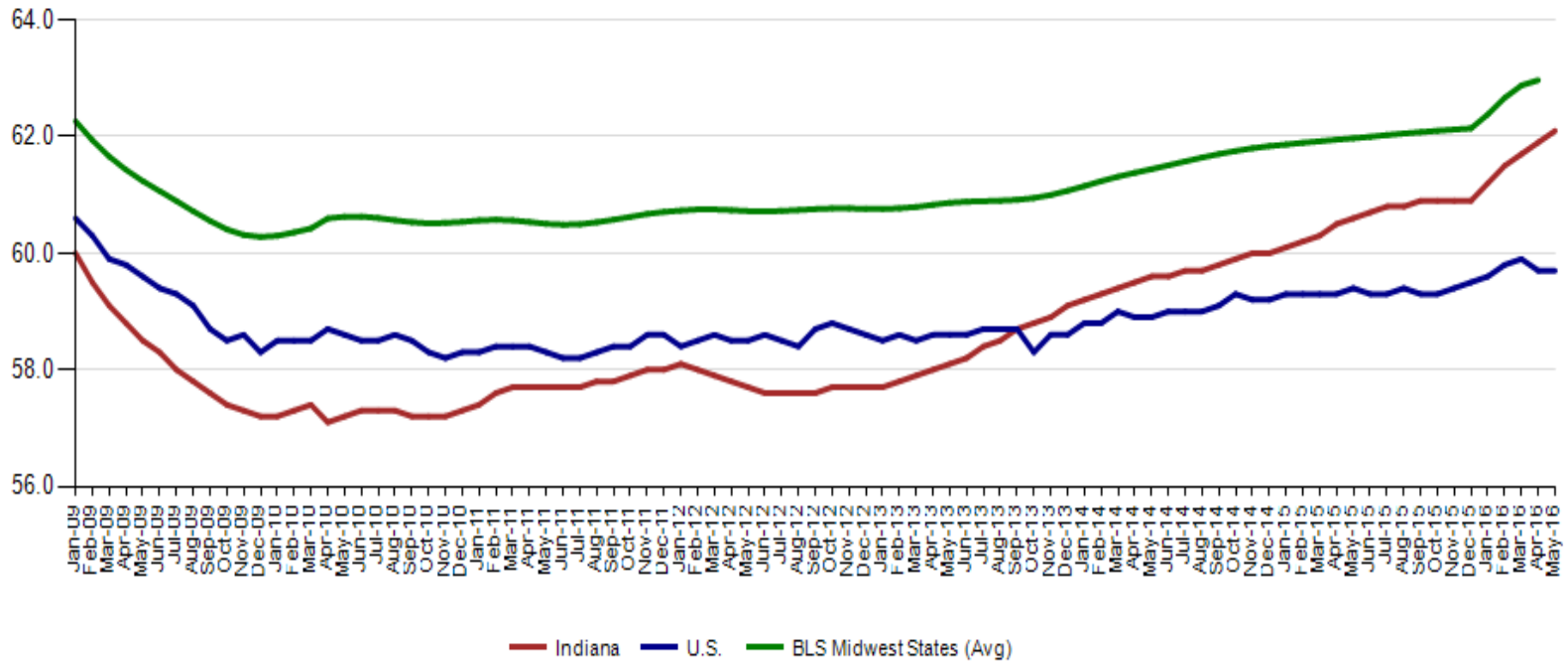
Indiana's Employment to Population Ratio is 62.1%. This is the highest recorded since September of 2008. The US stands at 59.7%.

### Employment to Population Ratio



The rise in the Employment to Population rate is showing up nationally and regionally among our neighboring border states.

Employment to Population Ratio (seasonally adjusted)



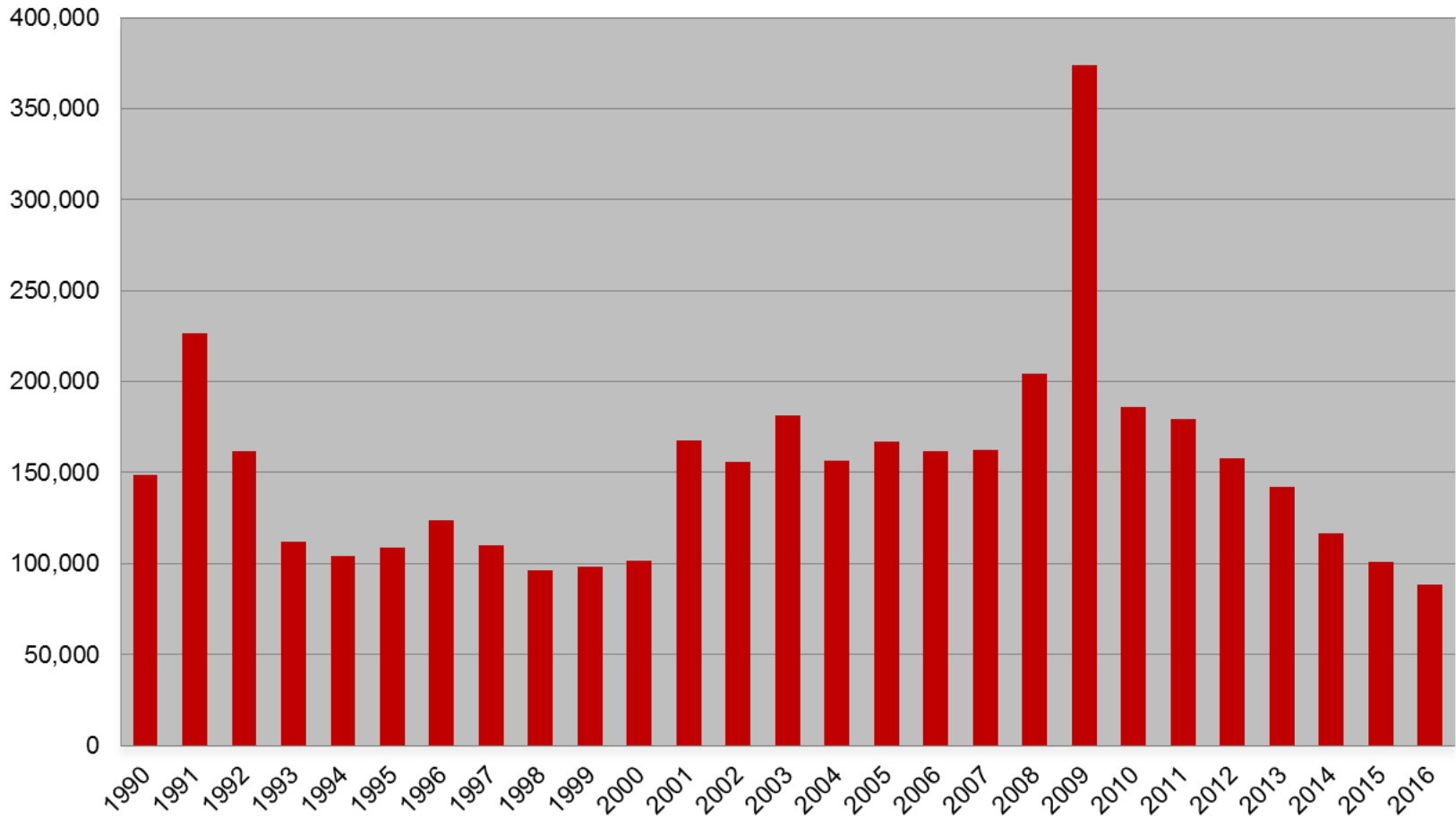


Midwest Comparison Rates: Seasonally  
Adjusted Over the Year and Over the Month  
(confidential and preliminary)

	May 2015	April 2016	May 2016	Monthly change	Yearly change
Indiana	4.8%	5.2%	5.0%	-0.2%	0.2%
U.S.	5.5%	5.0%	4.7%	-0.3%	-0.8%
Illinois	5.9%	6.6%		-6.6%	-5.9%
Kentucky	5.3%	5.4%	5.1%	-0.3%	-0.2%
Michigan	5.5%	4.8%	4.7%	-0.1%	-0.8%
Minnesota	3.6%	3.8%		-3.8%	-3.6%
Ohio	4.9%	5.2%	5.1%	-0.1%	0.2%
Wisconsin	4.6%	4.4%	4.2%	-0.2%	-0.4%



## Weekly Initial Claims – 23 weeks aggregate







# Regular UI Claims – Reference Week (12<sup>th</sup> of the month) Input to LAUS Unemployment Rate Model Declines over the month - and over the year

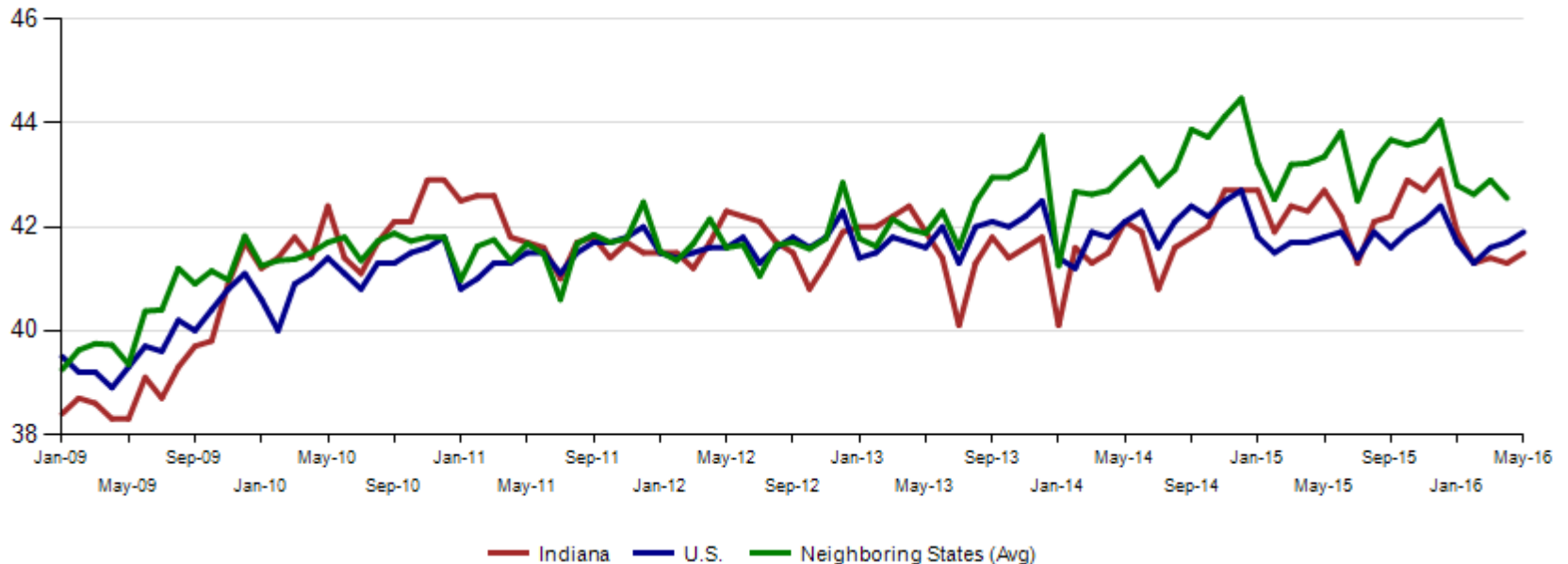
## Without earnings – Reference week claims

	2006	2007	2008	2009	2010	2011	2012	2013	2014	2015	2016	OTM Change	OTY Change
JANUARY	65,898	71,296	75,294	150,888	105,910	84,706	71,042	63,223	49,377	41,333	36,555	10,306	(4,778)
FEBRUARY	67,347	75,432	78,068	154,388	103,432	80,852	69,570	60,183	52,316	39,282	36,909	354	(2,373)
MARCH	59,716	64,936	74,759	157,257	93,469	71,696	60,752	54,578	45,928	35,755	32,439	(4,470)	(3,316)
APRIL	48,103	53,325	64,948	143,842	74,481	59,036	51,652	48,548	39,717	25,597	23,895	(8,544)	(1,702)
MAY	46,779	46,002	55,480	141,174	66,779	54,680	46,328	42,997	32,460	22,807	21,766	(2,129)	(1,041)
JUNE	45,533	46,350	57,228	136,670	67,996	55,021	46,820	41,722	29,524	22,030			
JULY	53,424	51,141	72,032	121,336	69,447	58,031	47,268	44,597	30,845	22,341			
AUGUST	45,021	43,887	61,985	103,509	62,976	51,710	42,134	39,998	26,061	21,472			
SEPTEMBER	41,247	42,500	61,548	92,680	58,280	46,824	41,955	39,563	23,685	20,941			
OCTOBER	42,487	42,313	67,306	86,275	58,317	46,909	39,467	37,778	23,768	19,917			
NOVEMBER	43,868	45,362	81,466	82,451	58,846	51,201	41,018	38,517	25,315	21,199			
DECEMBER	53,566	54,201	109,651	91,814	65,279	55,104	46,371	42,484	30,982	26,249			



Average weekly hours for Indiana manufacturing moved up 0.2 to 41.5. Nationally, manufacturing weekly hours went up 0.2 to 41.9. This is the third month in a row that the National average weekly hours was higher than Indiana.

**Avg. Weekly Manufacturing Production Hours (non seasonally adjusted)**





Institute For Supply Management: "The May PMI® registered 51.3 percent, an increase of 0.5 percentage from the April reading of 50.8 percent. May is reflective of manufacturing growth.

MANUFACTURING AT A GLANCE MAY 2016						
Index	Series Index May	Series Index Apr	Percentage Point Change	Direction	Rate of Change	Trend* (Months)
<b>PMI®</b>	51.3	50.8	+0.5	Growing	Faster	3
<b>New Orders</b>	55.7	55.8	-0.1	Growing	Slower	5
<b>Production</b>	52.6	54.2	-1.6	Growing	Slower	5
<b>Employment</b>	49.2	49.2	0.0	Contracting	Same	6
<b>Supplier Deliveries</b>	54.1	49.1	+5.0	Slower	From Faster	1
<b>Inventories</b>	45.0	45.5	-0.5	Contracting	Faster	11
<b>Customers' Inventories</b>	50.0	46.0	+4.0	Unchanged	From Too Low	1
<b>Prices</b>	63.5	59.0	+4.5	Increasing	Faster	3
<b>Backlog of Orders</b>	47.0	50.5	-3.5	Contracting	From Growing	1
<b>New Export Orders</b>	52.5	52.5	0.0	Growing	Same	3
<b>Imports</b>	50.0	50.0	0.0	Unchanged	Same	2
<b>OVERALL ECONOMY</b>				Growing	Faster	84
<b>Manufacturing Sector</b>				Growing	Faster	3

**Manufacturing ISM® Report On Business®** data is seasonally adjusted for New Orders, Production, Employment and Supplier Deliveries indexes.

\*Number of months moving in current direction.

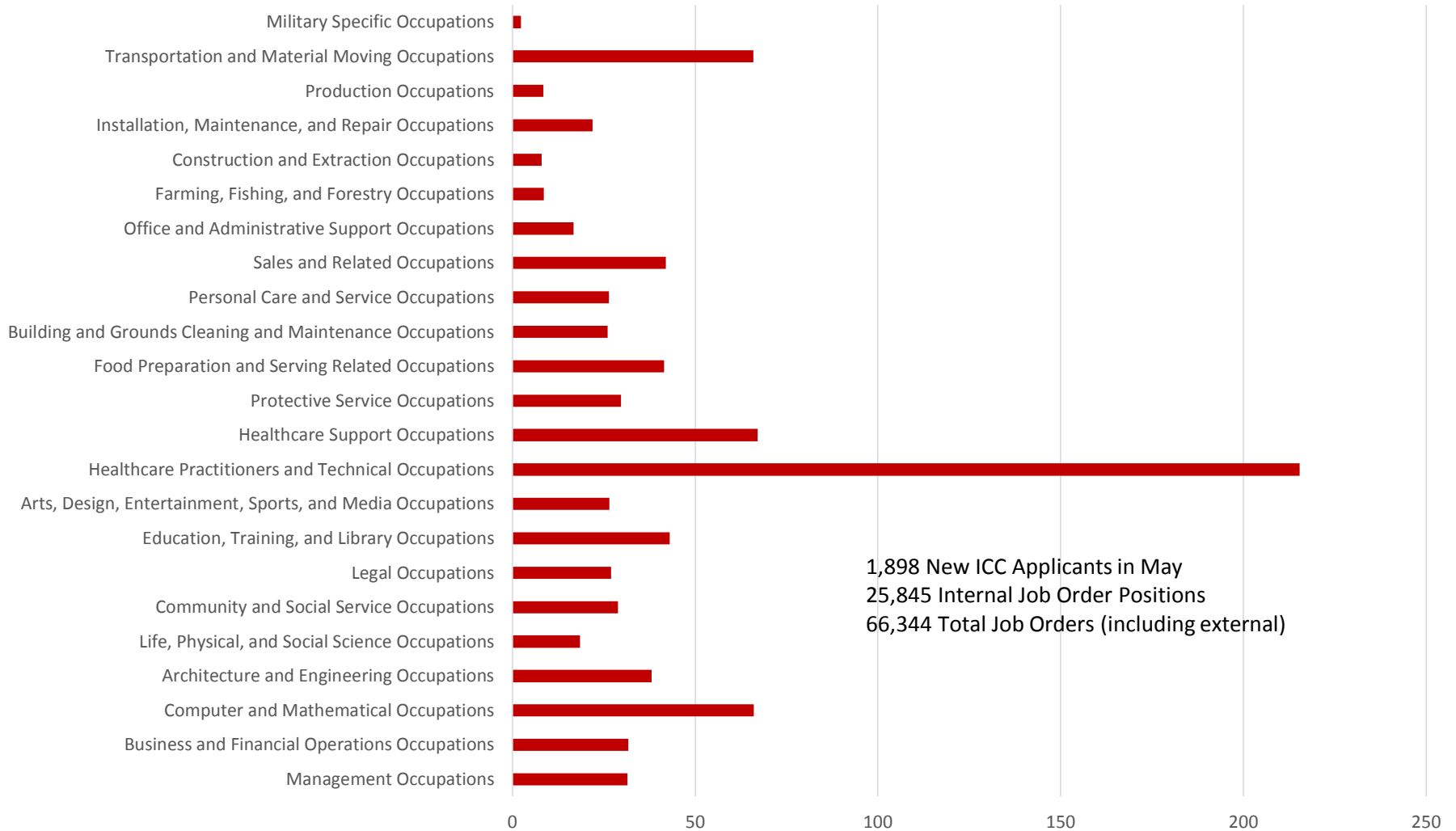


Internal Indiana Career Connect job orders are 58,684 in May. Health Care & Social Services had the most job orders followed by Administrative & Support & Waste Management & Remediation Services (this includes temp help services) and Retail Trade.

NAICS_title	May-2016	Prior Year			Current Year			Change over Prior Year			Current Year Including External			Current Duration (days)
	March	April	May	March	April	May	March	April	May	March	April	May	May	
<b>Manufacturing</b>	1,372	1,100	1,098	1,712	1,630	1,570	25%	48%	43%	4,423	4,683	4,729	57	
<b>Health Care and Social Services</b>	1,460	1,278	1,301	2,113	2,017	1,706	45%	58%	31%	13,139	12,939	12,000	44	
<b>Admin. &amp; Support &amp; Waste Mgt. &amp; Rem. Services</b>	858	814	825	1,280	1,209	1,233	49%	49%	49%	8,066	9,032	7,373	54	
<b>Finance and Insurance</b>	306	257	300	223	187	242	-27%	-27%	-19%	3,322	3,210	2,918	117	
<b>Professional, Scientific, and Technical Services</b>	416	436	361	778	633	641	87%	45%	78%	3,357	3,218	3,097	66	
<b>Transportation &amp; Warehousing</b>	442	373	399	387	432	444	-12%	16%	11%	3,532	5,789	6,502	64	
<b>Public Administration</b>	121	118	143	196	240	208	62%	103%	45%	1,694	1,373	1,237	65	
<b>Other Services(Except Public Administration)</b>	148	193	174	238	127	199	61%	-34%	14%	916	914	982	99	
<b>Retail Trade</b>	387	371	337	865	718	802	124%	94%	138%	8,538	8,892	7,218	43	
<b>Educational Services</b>	150	104	105	612	470	434	308%	352%	313%	3,441	3,499	4,184	41	
<b>Information</b>	199	212	189	299	204	253	50%	-4%	34%	1,843	1,710	1,536	43	
<b>Accommodation and Food Services</b>	232	215	143	186	231	364	-20%	7%	155%	5,221	5,180	2,251	53	
<b>Construction</b>	208	219	184	214	163	171	3%	-26%	-7%	582	502	515	78	
<b>Wholesale Trade</b>	195	303	334	371	389	361	90%	28%	8%	2,243	2,084	2,138	41	
<b>Real Estate and Rental and Leasing</b>	73	77	69	146	107	107	100%	39%	55%	956	967	710	60	
<b>Unallocated</b>	17	8	9	8	11	10	-53%	38%	11%	8	11	10	136	
<b>Mining</b>	10	7	11	12	11	6	20%	57%	-45%	44	39	40	50	
<b>Utilities</b>	67	81	63	127	95	72	90%	17%	14%	296	254	226	50	
<b>Agriculture, Forestry, Fishing and Hunting</b>	29	38	32	40	30	31	38%	-21%	-3%	67	94	57	82	
<b>Arts, Entertainment, and Recreation</b>	31	20	21	50	19	13	61%	-5%	-38%	202	100	93	75	
<b>Management of Companies and Enterprises</b>	14	5	13	20	23	15	43%	360%	15%	1,254	1,330	868	81	
<b>Total</b>	<b>6,735</b>	<b>6,229</b>	<b>6,111</b>	<b>9,877</b>	<b>8,946</b>	<b>8,882</b>	<b>47%</b>	<b>44%</b>	<b>45%</b>	<b>63,144</b>	<b>65,820</b>	<b>58,684</b>	<b>55</b>	



### Job Orders per Applicant



1,898 New ICC Applicants in May  
25,845 Internal Job Order Positions  
66,344 Total Job Orders (including external)