



INDIANA  
DEPARTMENT OF  
**WORKFORCE**  
DEVELOPMENT

# Indiana's Employment and Labor Force Estimates June 2017

*07/18/2017*

# Key Points

- **The Indiana Unemployment Rate is 3.0% in June 2017.**  
Nationally the rate is 4.4%.
- Indiana's rate has decreased 1.5% over the year from June 2016.
- Indiana's labor force decreased over the month by 2,427 with an increase in employment of 4,088 and an unemployment decrease of 6,515.
- Indiana's labor force has increased by 4,080 over the year.
- Indiana's labor force participation rate decreased 0.1% over the month and is currently 64.4%. This remains above the US Labor Force Participation rate which stands at 62.8%.
- June total private employment is 15,700 above the November 2016 peak.

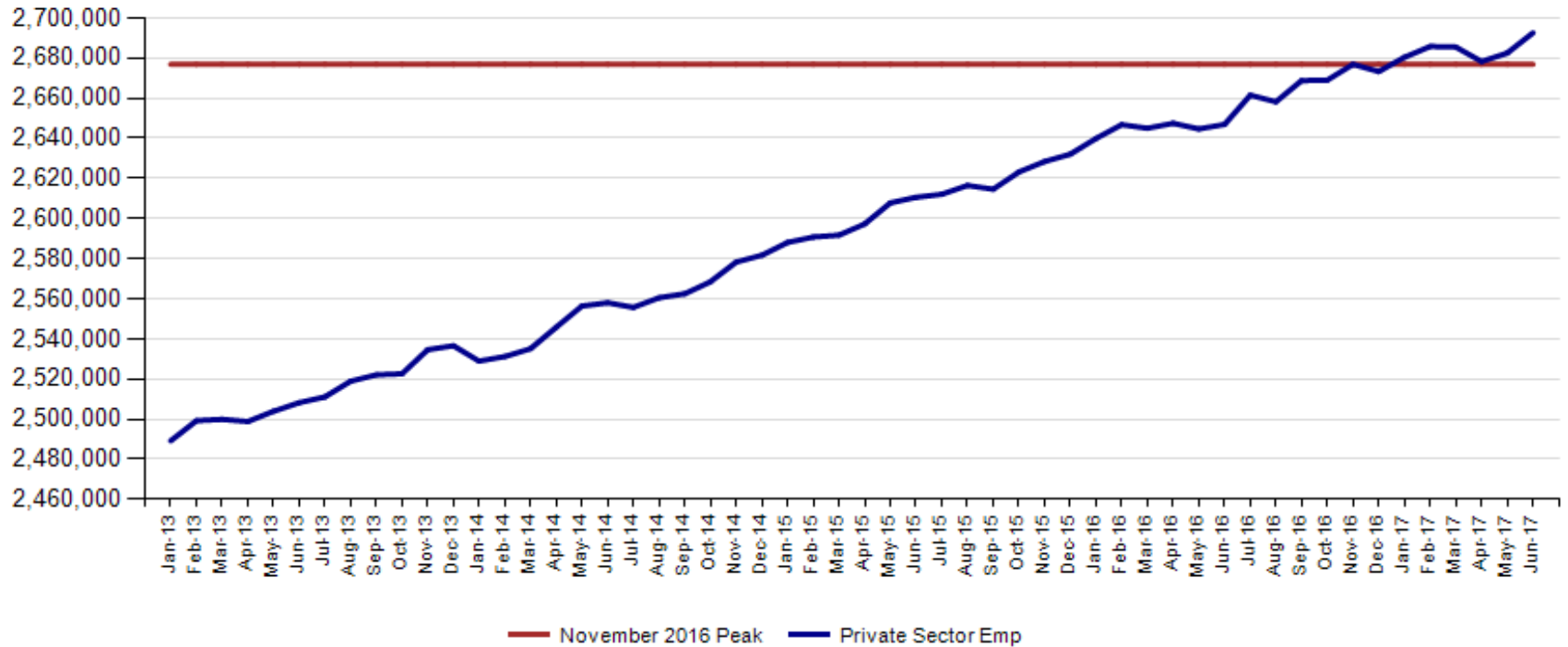
# Key Points

**Indiana total private employment increased by 10,100 over the month and had gains of 45,700 over the year.**

- Indiana May private employment stands at 2,692,600.
- Professional & Business Services had gains of 3,500.
- Private Educational & Health Services had gains of 3,000.
- Leisure and Hospitality had gains of 2,300.
- All Other Category had gains of 2,100.
- Financial Activities had gains of 1,100.
- Manufacturing had gains of 700.
- Construction had declines of 900.
- Trade, Transportation & Utilities had declines of 1,700.

**June total private employment is 15,700 above the November 2016 peak.**

**Indiana Private Sector Employment**





**June 2017 Indiana private sector employment increased by 10,100 jobs over the month and is up 45,700 over the year. Professional & Business Services increased by 3,500 over the month, followed by Private Educational & Health Services which increased by 3,000.**

IN Employment Change Over the Month, Year-to-Date and Over the Year (seasonally adjusted)

| Industry   | June 2016 | December 2016 | May 2017  | June 2017 | Month Change | Y-to-D Change | Y-to-Y Change |
|--|-----------|---------------|-----------|-----------|--------------|---------------|---------------|
| Private Educational & Health Services            | 462.1     | 470.0         | 475.2     | 478.2     | 3.0          | 8.2           | 16.1          |
| .....Private Educational Services                | 67.6      | 71.3          | 74.2      | 74.8      | 0.6          | 3.5           | 7.2           |
| .....Health Care & Social Assistance             | 394.5     | 398.7         | 401.0     | 403.4     | 2.4          | 4.7           | 8.9           |
| Manufacturing                                    | 523.7     | 526.9         | 525.8     | 526.5     | 0.7          | -0.4          | 2.8           |
| Professional & Business Services                 | 333.3     | 337.3         | 339.0     | 342.5     | 3.5          | 5.2           | 9.2           |
| Financial Activities                             | 133.6     | 134.8         | 138.2     | 139.3     | 1.1          | 4.5           | 5.7           |
| Construction                                     | 130.2     | 128.8         | 136.6     | 135.7     | -0.9         | 6.9           | 5.5           |
| Leisure and Hospitality                          | 306.2     | 310.2         | 308.1     | 310.4     | 2.3          | 0.2           | 4.2           |
| Trade, Transportation & Utilities                | 592.9     | 598.4         | 593.9     | 592.2     | -1.7         | -6.2          | -0.7          |
| .....Trade                                       | 450.4     | 455.2         | 454.3     | 452.4     | -1.9         | -2.8          | 2.0           |
| .....Transportation, Warehousing & Utilities     | 142.5     | 143.2         | 139.6     | 139.8     | 0.2          | -3.4          | -2.7          |
| All Other  | 164.9     | 166.9         | 165.7     | 167.8     | 2.1          | 0.9           | 2.9           |
| Total Private                                    | 2,646.9   | 2,673.3       | 2,682.5   | 2,692.6   | 10.1         | 19.3          | 45.7          |
| Government (Includes Public Schools & Hospitals) | 429.5     | 430.6         | 428.1     | 429.0     | 0.9          | -1.6          | -0.5          |
| Total Nonfarm                                    | 3,076.4   | 3,103.9       | 3,110.6   | 3,121.6   | 11.0         | 17.7          | 45.2          |
| United States Total Private                      | 121,951.0 | 123,026.0     | 123,864.0 | 124,051.0 | 187.0        | 1,025.0       | 2,100.0       |



June 2017 estimates show Indiana has gained 369,400 in Private jobs since the July 2009 trough. Manufacturing has accounted for 99,600 of those jobs.

IN Statewide Estimates (seasonally adjusted) -- June 2017

| Supersector                                      | Private Empl. Peak Nov 2016 | Private Empl. Trough July 2009 | May 2017  | June 2017 | Change Since Peak | Change Since Trough | Month to Month Change |
|--|-----------------------------|--------------------------------|-----------|-----------|-------------------|---------------------|-----------------------|
| Private Educational & Health Services            | 472.1                       | 411.1                          | 475.2     | 478.2     | 6.1               | 67.1                | 3.0                   |
| .....Private Educational Services                | 74.2                        | 63.3                           | 74.2      | 74.8      | 0.6               | 11.5                | 0.6                   |
| .....Health Care & Social Assistance             | 397.9                       | 347.8                          | 401.0     | 403.4     | 5.5               | 55.6                | 2.4                   |
| Manufacturing                                    | 524.6                       | 426.9                          | 525.8     | 526.5     | 1.9               | 99.6                | 0.7                   |
| Professional & Business Services                 | 340.7                       | 256.9                          | 339.0     | 342.5     | 1.8               | 85.6                | 3.5                   |
| Financial Activities                             | 134.9                       | 130.7                          | 138.2     | 139.3     | 4.4               | 8.6                 | 1.1                   |
| Construction                                     | 129.1                       | 116.5                          | 136.6     | 135.7     | 6.6               | 19.2                | -0.9                  |
| Leisure and Hospitality                          | 309.5                       | 276.8                          | 308.1     | 310.4     | 0.9               | 33.6                | 2.3                   |
| Trade, Transportation & Utilities                | 598.8                       | 545.7                          | 593.9     | 592.2     | -6.6              | 46.5                | -1.7                  |
| .....Trade                                       | 454.5                       | 421.6                          | 454.3     | 452.4     | -2.1              | 30.8                | -1.9                  |
| .....Transportation, Warehousing & Utilities     | 144.3                       | 124.1                          | 139.6     | 139.8     | -4.5              | 15.7                | 0.2                   |
| All Other  | 167.2                       | 158.6                          | 165.7     | 167.8     | 0.6               | 9.2                 | 2.1                   |
| Total Private                                    | 2,676.9                     | 2,323.2                        | 2,682.5   | 2,692.6   | 15.7              | 369.4               | 10.1                  |
| Government (Includes Public Schools & Hospitals) | 431.4                       | 434.5                          | 428.1     | 429.0     | -2.4              | -5.5                | 0.9                   |
| Total Nonfarm                                    | 3,108.3                     | 2,757.7                        | 3,110.6   | 3,121.6   | 13.3              | 363.9               | 11.0                  |
| United States Total Private                      | 122,876.0                   | 108,171.0                      | 123,864.0 | 124,051.0 | 1,175.0           | 15,880.0            | 187.0                 |



Indiana job growth over the month surpassed the national trend in private sector gains in June. Indiana Private Educational Services and Financial Activities, are growing faster than the US over the month and over the year.

### IN Employment Change Compared to the U.S.

| Industry   | Indiana Month to Month | U.S. Month to Month | Indiana vs U.S. Change |
|--|------------------------|---------------------|------------------------|
| Private Educational & Health Services            | 0.6%                   | 0.2%                | OVER                   |
| .....Private Educational Services                | 0.8%                   | -0.4%               | OVER                   |
| .....Health Care & Social Assistance             | 0.6%                   | 0.3%                | OVER                   |
| Manufacturing                                    | 0.1%                   | 0.0%                | OVER                   |
| Professional & Business Services                 | 1.0%                   | 0.2%                | OVER                   |
| Financial Activities                             | 0.8%                   | 0.2%                | OVER                   |
| Construction                                     | -0.7%                  | 0.2%                | UNDER                  |
| Leisure and Hospitality                          | 0.7%                   | 0.2%                | OVER                   |
| Trade, Transportation & Utilities                | -0.3%                  | 0.1%                | UNDER                  |
| .....Trade                                       | -0.4%                  | 0.1%                | UNDER                  |
| .....Transportation, Warehousing & Utils         | 0.1%                   | 0.1%                | OVER                   |
| All Other  | 1.3%                   | 0.2%                | OVER                   |
| Total Private                                    | 0.4%                   | 0.2%                | OVER                   |
| Government (Includes Public Schools & Hospitals) | 0.2%                   | 0.2%                | OVER                   |
| Total Nonfarm                                    | 0.4%                   | 0.2%                | OVER                   |

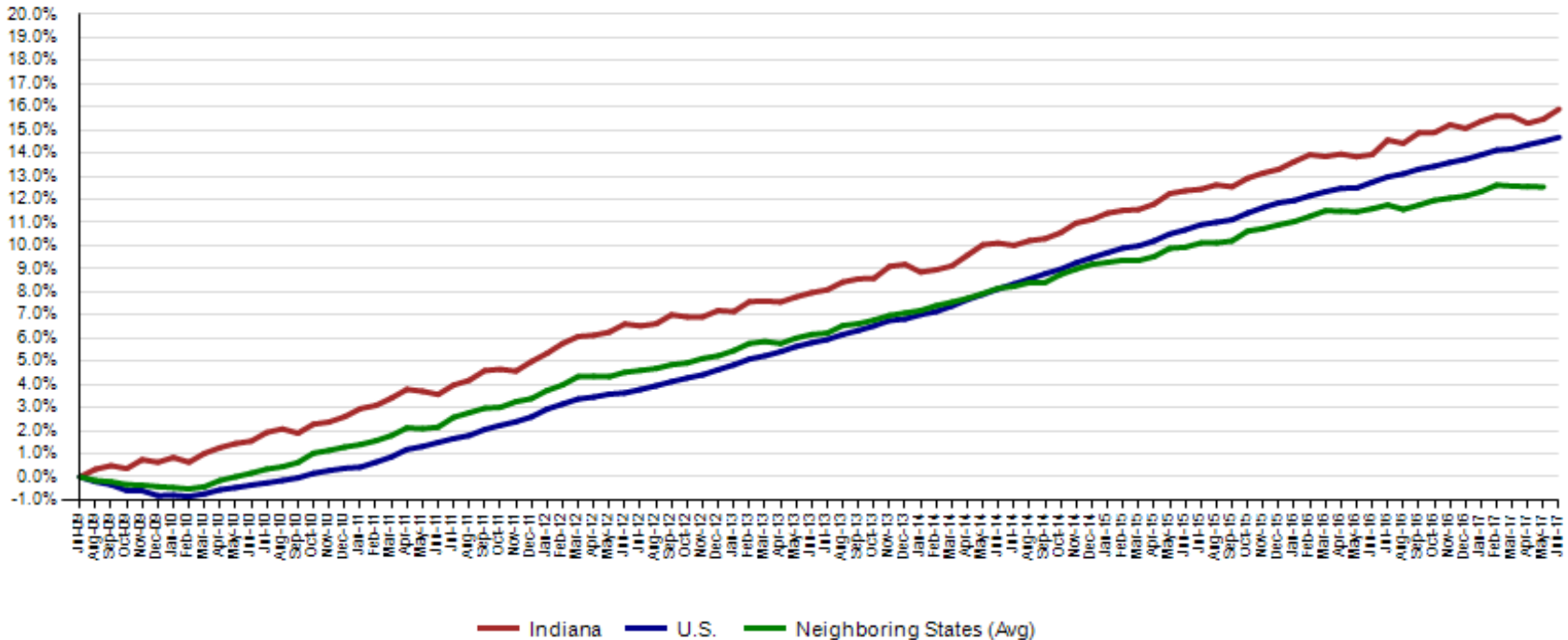
| Indiana Year-to-Date | U.S. Year-to-Date | Indiana vs U.S. Change |
|----------------------|-------------------|------------------------|
| 1.7%                 | 1.0%              | OVER                   |
| 4.9%                 | 0.3%              | OVER                   |
| 1.2%                 | 1.1%              | OVER                   |
| -0.1%                | 0.4%              | UNDER                  |
| 1.5%                 | 1.4%              | OVER                   |
| 3.3%                 | 1.0%              | OVER                   |
| 5.4%                 | 1.7%              | OVER                   |
| 0.1%                 | 1.1%              | UNDER                  |
| -1.0%                | 0.1%              | UNDER                  |
| -0.6%                | 0.0%              | UNDER                  |
| -2.4%                | 0.3%              | UNDER                  |
| 0.5%                 | 0.7%              | UNDER                  |
| 0.7%                 | 0.8%              | UNDER                  |
| -0.4%                | 0.2%              | UNDER                  |
| 0.6%                 | 0.7%              | UNDER                  |

| Indiana Year-to-Year | U.S. Year-to-Year | Indiana vs U.S. Change |
|----------------------|-------------------|------------------------|
| 3.5%                 | 2.2%              | OVER                   |
| 10.7%                | 1.4%              | OVER                   |
| 2.3%                 | 2.3%              | UNDER                  |
| 0.5%                 | 0.4%              | OVER                   |
| 2.8%                 | 3.1%              | UNDER                  |
| 4.3%                 | 2.0%              | OVER                   |
| 4.2%                 | 3.1%              | OVER                   |
| 1.4%                 | 2.0%              | UNDER                  |
| -0.1%                | 0.7%              | UNDER                  |
| 0.4%                 | 0.4%              | OVER                   |
| -1.9%                | 1.7%              | UNDER                  |
| 1.8%                 | 0.7%              | OVER                   |
| 1.7%                 | 1.7%              | OVER                   |
| -0.1%                | 0.6%              | UNDER                  |
| 1.5%                 | 1.6%              | UNDER                  |



Since the low point of employment in July 2009, private sector employment growth in Indiana has surpassed the U.S. (15.9% vs. 14.7%).

Private Sector Job Growth Since the Low Point of Employment in Indiana

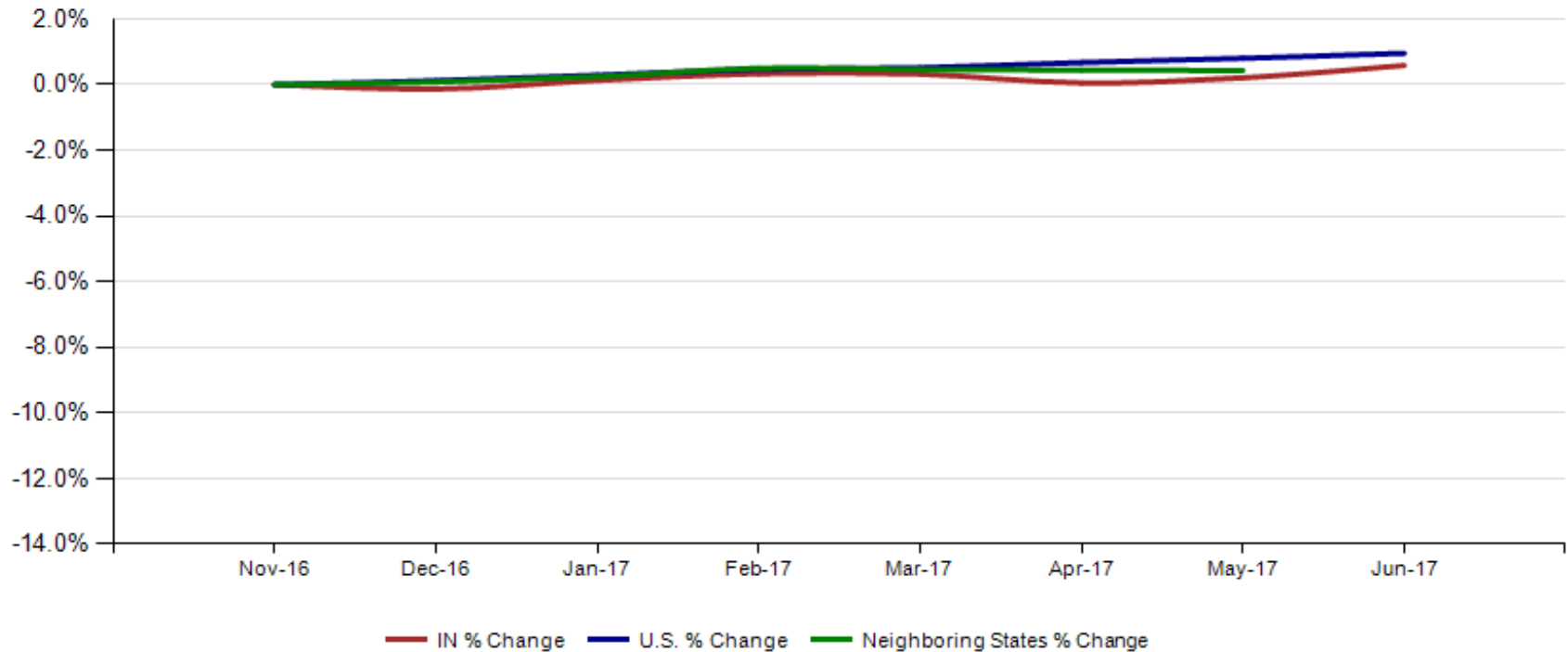


Source: Current Employment Statistics, seasonally adjusted



Since Indiana's high point of employment (November 2016), private sector employment growth in Indiana has lagged the U.S. (0.6% growth vs. 1.0% nationally).

**Private Sector Job Growth Since the Peak of Employment in Indiana**



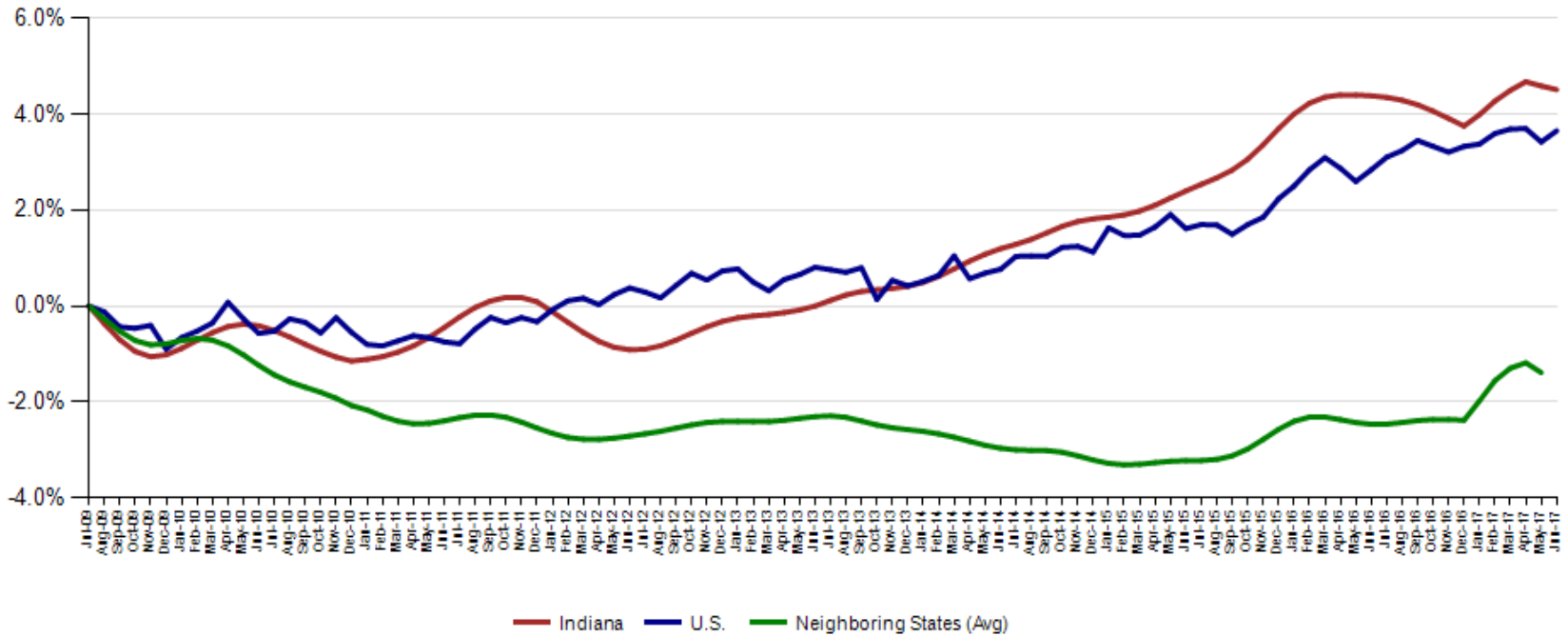


CES May Total Non Farm preliminary estimates were revised down by 4,000 jobs. Private employment was revised up by 1,700. The change from April to May is now a decrease of 400 in Total Non-Farm and an increase of 1,700 in private employment.

| Revisions to May 2017 Estimates                     |        |          |         |          |              |                   |
|---|--------|----------|---------|----------|--------------|-------------------|
| INDUSTRY TITLE                                      | Apr    | May Prel | May Rev | Revision | Chg from Apr | Prel Chg from Apr |
| Total Nonfarm                                       | 3111.0 | 3114.6   | 3110.6  | -4.0     | -0.4         | 3.6               |
| Total Private                                       | 2678.3 | 2680.8   | 2682.5  | 1.7      | 4.2          | 2.5               |
| Goods Producing                                     | 668.7  | 668.4    | 669.0   | 0.6      | 0.3          | -0.3              |
| Service-Providing                                   | 2442.3 | 2446.2   | 2441.6  | -4.6     | -0.7         | 3.9               |
| Private Service Providing                           | 2009.6 | 2012.4   | 2013.5  | 1.1      | 3.9          | 2.8               |
| Construction  | 133.9  | 136.0    | 136.6   | 0.6      | 2.7          | 2.1               |
| Manufacturing                                       | 528.3  | 525.8    | 525.8   | 0.0      | -2.5         | -2.5              |
| Trade, Transportation, and Utilities                | 598.6  | 594.5    | 593.9   | -0.6     | -4.7         | -4.1              |
| Wholesale Trade                                     | 120.2  | 120.0    | 120.0   | 0.0      | -0.2         | -0.2              |
| Retail Trade  | 336.7  | 334.9    | 334.3   | -0.6     | -2.4         | -1.8              |
| Transportation, Warehousing, and Utilities          | 141.7  | 139.6    | 139.6   | 0.0      | -2.1         | -2.1              |
| Information   | 31.0   | 30.8     | 30.7    | -0.1     | -0.3         | -0.2              |
| Financial Activities                                | 137.0  | 138.1    | 138.2   | 0.1      | 1.2          | 1.1               |
| Finance and Insurance                               | 101.7  | 102.2    | 102.3   | 0.1      | 0.6          | 0.5               |
| Real Estate and Rental and Leasing                  | 35.3   | 35.9     | 35.9    | 0.0      | 0.6          | 0.6               |
| Professional and Business Services                  | 335.0  | 337.2    | 339.0   | 1.8      | 4.0          | 2.2               |
| Professional, Scientific, and Technical Services    | 113.9  | 115.8    | 116.4   | 0.6      | 2.5          | 1.9               |
| Management of Companies and Enterprises             | 34.5   | 34.7     | 34.8    | 0.1      | 0.3          | 0.2               |
| Admin & Support & Waste Mgmt & Remediation Services | 186.6  | 186.7    | 187.8   | 1.1      | 1.2          | 0.1               |
| Education and Health Services                       | 471.4  | 474.5    | 475.2   | 0.7      | 3.8          | 3.1               |
| Educational Services                                | 72.2   | 73.2     | 74.2    | 1.0      | 2.0          | 1.0               |
| Health Care and Social Assistance                   | 399.2  | 401.3    | 401.0   | -0.3     | 1.8          | 2.1               |
| Leisure and Hospitality                             | 307.8  | 307.7    | 308.1   | 0.4      | 0.3          | -0.1              |
| Other Services                                      | 128.8  | 129.6    | 128.4   | -1.2     | -0.4         | 0.8               |
| Government  | 432.7  | 433.8    | 428.1   | -5.7     | -4.6         | 1.1               |

Indiana's June seasonally adjusted labor force is now at 3,332,448 and the number of employed is at 3,231,263. An estimated 101,185 individuals are currently unemployed and seeking employment. The preliminary June employed numbers are new highs for Indiana.

**Labor Force Change Since July 2009 Indiana Trough (seasonally adjusted)**



# The June Indiana labor force participation rate is now 64.4% and the U.S. Rate is now at 62.8%

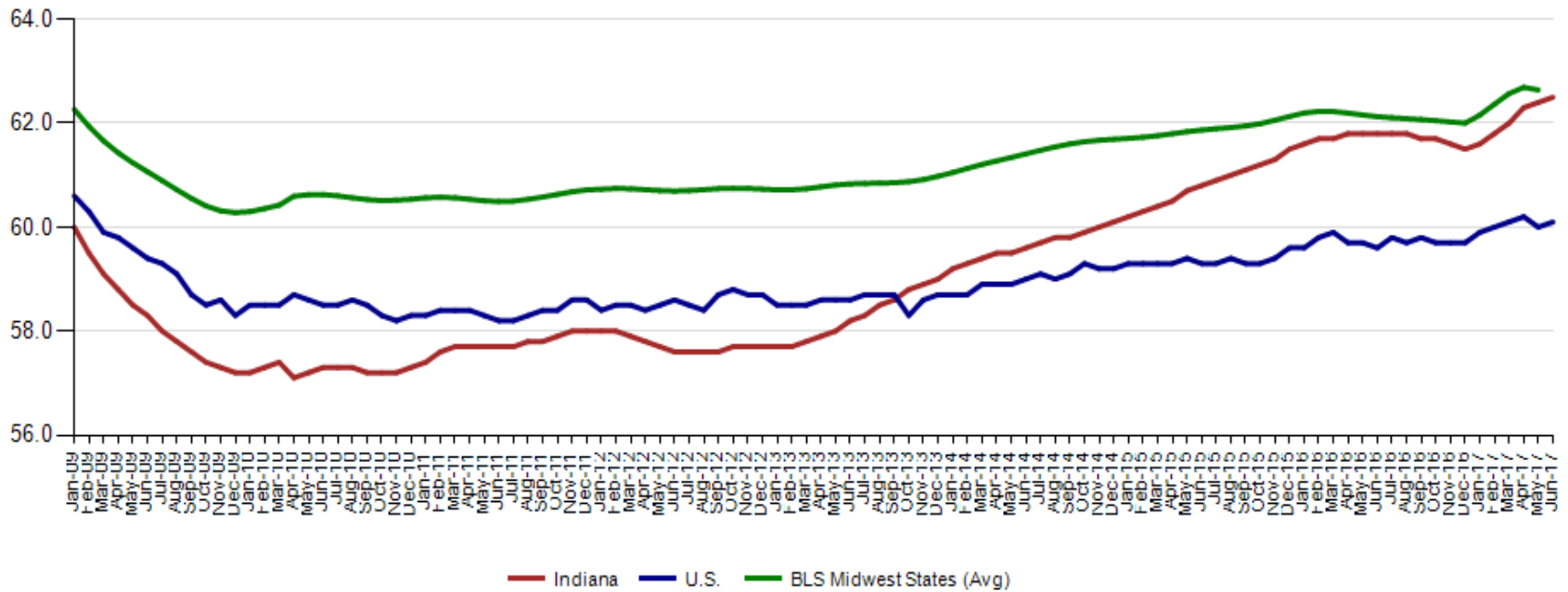


## Labor Force Participation Rate



**Indiana's employment to population June 2017 rate is 62.5% The June U.S. employment to population rate is 60.1% The BLS Midwest Regional States held at 62.6% (May 2017).**

**Employment to Population Ratio (seasonally adjusted)**





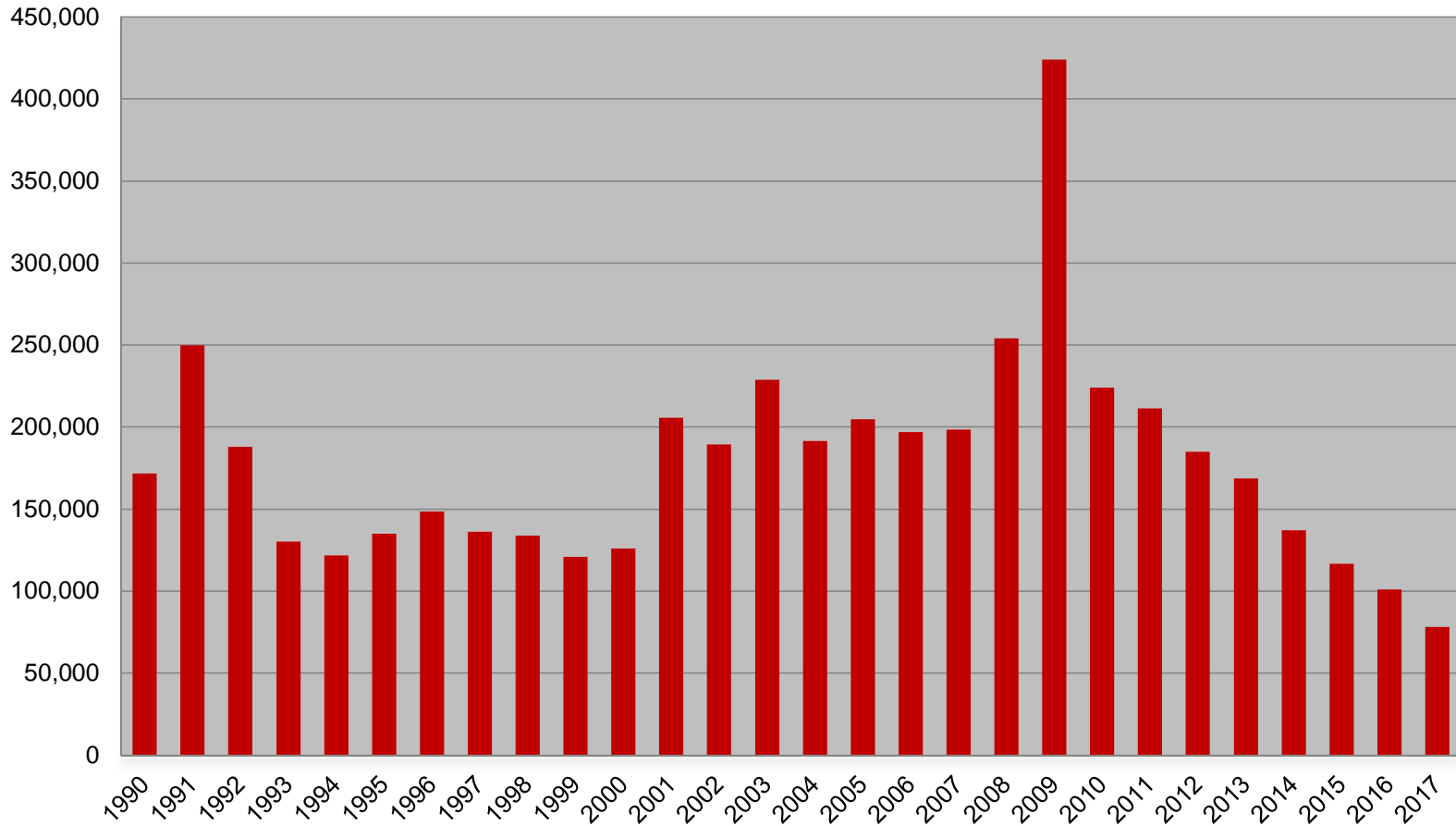
Midwest Comparison Rates: Seasonally  
Adjusted Over the Year and Over the Month  
(confidential and preliminary)

|          | June 2016 | May 2017 | June 2017 | Monthly change | Yearly change |
|----------|-----------|----------|-----------|----------------|---------------|
| Indiana  | 4.5%      | 3.2%     | 3.0%      | -0.2%          | -1.5%         |
| U.S.     | 4.9%      | 4.3%     | 4.4%      | 0.1%           | -0.5%         |
| Illinois | 5.9%      | 4.6%     |           | -4.6%          | -5.9%         |
| Kentucky | 5.0%      | 5.0%     |           | -5.0%          | -5.0%         |
| Michigan | 4.8%      | 4.2%     | 3.8%      | -0.4%          | -1.0%         |
| Ohio     | 4.9%      | 4.9%     | 5.0%      | 0.1%           | 0.1%          |

\*2016 Benchmark



## Weekly Initial Claims – Week 27





# Regular UI Claims – Reference Week (12<sup>th</sup> of the month) Input to LAUS Unemployment Rate Model Declines over the month - and over the year

## Without earnings – Reference week claims

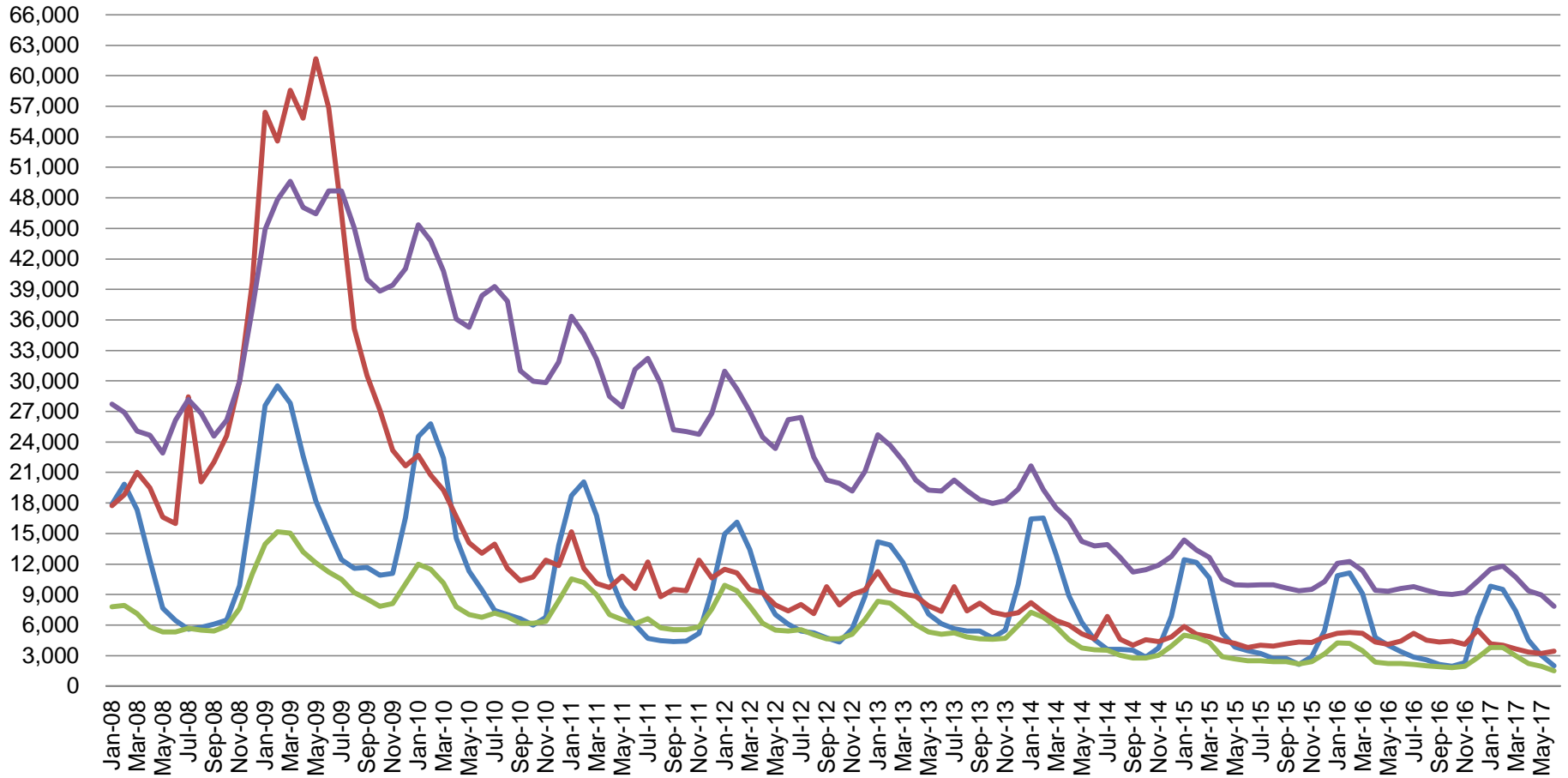
|           | 2006   | 2007   | 2008    | 2009    | 2010    | 2011   | 2012   | 2013   | 2014   | 2015   | 2016   | 2017   | OTM<br>Change | OTY<br>Change |
|-----------|--------|--------|---------|---------|---------|--------|--------|--------|--------|--------|--------|--------|---------------|---------------|
| JANUARY   | 65,898 | 71,296 | 75,294  | 150,888 | 105,910 | 84,706 | 71,042 | 63,223 | 49,377 | 41,333 | 36,555 | 33,137 | 8,538         | (3,418)       |
| FEBRUARY  | 67,347 | 75,432 | 78,068  | 154,388 | 103,432 | 80,852 | 69,570 | 60,183 | 52,316 | 39,282 | 36,909 | 32,463 | (674)         | (4,446)       |
| MARCH     | 59,716 | 64,936 | 74,759  | 157,257 | 93,469  | 71,696 | 60,752 | 54,578 | 45,928 | 35,755 | 32,439 | 32,141 | (322)         | (298)         |
| APRIL     | 48,103 | 53,325 | 64,948  | 143,842 | 74,481  | 59,036 | 51,652 | 48,548 | 39,717 | 25,597 | 23,895 | 21,998 | (10,143)      | (1,897)       |
| MAY       | 46,779 | 46,002 | 55,480  | 141,174 | 66,779  | 54,680 | 46,328 | 42,997 | 32,460 | 22,807 | 22,300 | 19,431 | (2,567)       | (2,869)       |
| JUNE      | 45,533 | 46,350 | 57,228  | 136,670 | 67,996  | 55,021 | 46,820 | 41,722 | 29,524 | 22,030 | 22,025 | 16,538 | (2,893)       | (5,487)       |
| JULY      | 53,424 | 51,141 | 72,032  | 121,336 | 69,447  | 58,031 | 47,268 | 44,597 | 30,845 | 22,341 | 22,326 |        |               |               |
| AUGUST    | 45,021 | 43,887 | 61,985  | 103,509 | 62,976  | 51,710 | 42,134 | 39,998 | 26,061 | 21,472 | 20,737 |        |               |               |
| SEPTEMBER | 41,247 | 42,500 | 61,548  | 92,680  | 58,280  | 46,824 | 41,955 | 39,563 | 23,685 | 20,941 | 19,372 |        |               |               |
| OCTOBER   | 42,487 | 42,313 | 67,306  | 86,275  | 58,317  | 46,909 | 39,467 | 37,778 | 23,768 | 19,917 | 19,143 |        |               |               |
| NOVEMBER  | 43,868 | 45,362 | 81,466  | 82,451  | 58,846  | 51,201 | 41,018 | 38,517 | 25,315 | 21,199 | 19,547 |        |               |               |
| DECEMBER  | 53,566 | 54,201 | 109,651 | 91,814  | 65,279  | 55,104 | 46,371 | 42,484 | 30,982 | 26,249 | 24,599 |        |               |               |





# Regular UI Claims by Industry

For the Reference Week of Each Month



Source: ETA 203

Construction Manufacturing Admin. and Support All Other

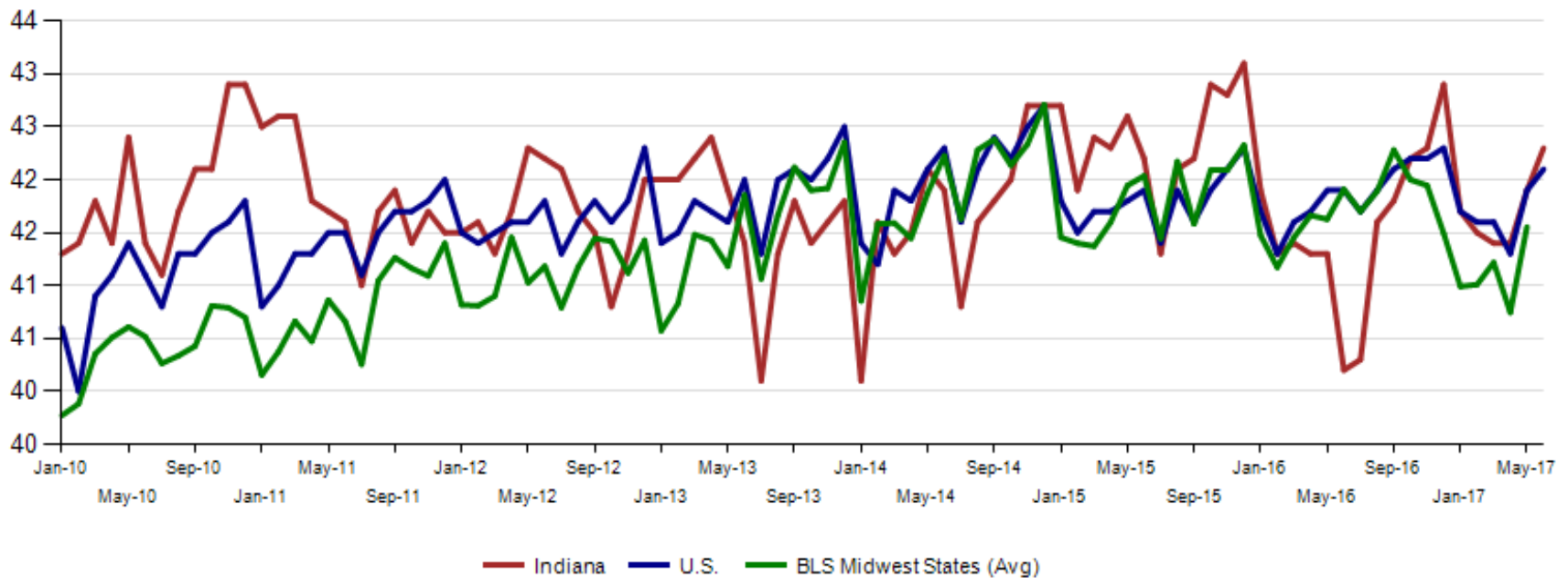


**Internal and external Indiana Career Connect job orders are 67,465 in May. Health Care & Social Services, Retail Trade and Administrative & Support & Waste Management & Remediation Services (this includes temp help services) top the list.**

| NAICS_title                                      | Jun-2017     | Prior Year   |              |              | Current Year  |               |           | Change over Prior Year |            |               | Current Year Including External |               |           | Current Duration (days) |
|--|--------------|--------------|--------------|--------------|---------------|---------------|-----------|------------------------|------------|---------------|---------------------------------|---------------|-----------|-------------------------|
|  |              | April        | May          | June         | April         | May           | June      | April                  | May        | June          | April                           | May           | June      | June                    |
| <b>Total</b>                                     | <b>8,946</b> | <b>8,882</b> | <b>9,511</b> | <b>9,460</b> | <b>10,417</b> | <b>10,607</b> | <b>6%</b> | <b>17%</b>             | <b>12%</b> | <b>64,585</b> | <b>50,718</b>                   | <b>67,465</b> | <b>50</b> |                         |
| Health Care and Social Services                  | 2,017        | 1,706        | 2,182        | 1,826        | 1,953         | 2,270         | -9%       | 14%                    | 4%         | 13,921        | 10,101                          | 13,544        | 39        |                         |
| Retail Trade                                     | 718          | 802          | 826          | 716          | 704           | 704           | 0%        | -12%                   | -15%       | 10,625        | 6,754                           | 7,844         | 43        |                         |
| Admin. & Support & Waste Mgt. & Rem. Services    | 1,209        | 1,233        | 1,193        | 1,204        | 1,185         | 989           | 0%        | -4%                    | -17%       | 8,801         | 6,619                           | 7,655         | 55        |                         |
| Accommodation and Food Services                  | 231          | 364          | 260          | 550          | 873           | 1,276         | 138%      | 140%                   | 391%       | 3,407         | 3,435                           | 5,590         | 27        |                         |
| Transportation & Warehousing                     | 432          | 444          | 448          | 382          | 439           | 406           | -12%      | -1%                    | -9%        | 3,459         | 2,280                           | 4,865         | 69        |                         |
| Manufacturing                                    | 1,630        | 1,570        | 1,666        | 1,605        | 1,757         | 1,852         | -2%       | 12%                    | 11%        | 4,338         | 3,908                           | 4,825         | 56        |                         |
| Management of Companies and Enterprises          | 23           | 15           | 21           | 13           | 17            | 13            | -43%      | 13%                    | -38%       | 776           | 555                             | 4,083         | 107       |                         |
| Educational Services                             | 470          | 434          | 644          | 513          | 834           | 711           | 9%        | 92%                    | 10%        | 3,282         | 3,802                           | 3,871         | 25        |                         |
| Finance and Insurance                            | 187          | 242          | 196          | 187          | 225           | 206           | 0%        | -7%                    | 5%         | 2,821         | 2,368                           | 3,410         | 88        |                         |
| Professional, Scientific, and Technical Services | 633          | 641          | 593          | 825          | 780           | 716           | 30%       | 22%                    | 21%        | 3,544         | 3,207                           | 3,104         | 73        |                         |
| Public Administration                            | 240          | 208          | 181          | 196          | 253           | 206           | -18%      | 22%                    | 14%        | 2,669         | 1,793                           | 2,346         | 84        |                         |
| Wholesale Trade                                  | 389          | 361          | 412          | 528          | 449           | 410           | 36%       | 24%                    | 0%         | 2,261         | 1,880                           | 2,270         | 40        |                         |
| Other Services(Except Public Administration)     | 127          | 199          | 160          | 203          | 203           | 186           | 60%       | 2%                     | 16%        | 821           | 730                             | 1,051         | 133       |                         |
| Information                                      | 204          | 253          | 310          | 214          | 224           | 210           | 5%        | -11%                   | -32%       | 1,378         | 1,159                           | 965           | 39        |                         |
| Real Estate and Rental and Leasing               | 107          | 107          | 99           | 125          | 121           | 133           | 17%       | 13%                    | 34%        | 1,030         | 857                             | 794           | 62        |                         |
| Construction                                     | 163          | 171          | 165          | 189          | 219           | 173           | 16%       | 28%                    | 5%         | 690           | 689                             | 762           | 86        |                         |
| Utilities  | 95           | 72           | 78           | 109          | 111           | 87            | 15%       | 54%                    | 12%        | 293           | 261                             | 260           | 40        |                         |
| Arts, Entertainment, and Recreation              | 19           | 13           | 18           | 43           | 16            | 26            | 126%      | 23%                    | 44%        | 367           | 172                             | 146           | 52        |                         |
| Agriculture, Forestry, Fishing and Hunting       | 30           | 31           | 17           | 21           | 45            | 20            | -30%      | 45%                    | 18%        | 52            | 87                              | 48            | 97        |                         |
| Mining   | 11           | 6            | 25           | 1            | 5             | 9             | -91%      | -17%                   | -64%       | 40            | 57                              | 28            | 43        |                         |
| Unallocated                                      | 11           | 10           | 17           | 10           | 4             | 4             | -9%       | -60%                   | -76%       | 10            | 4                               | 4             | 144       |                         |

June 2017 average weekly hours for Indiana manufacturing production increased by 0.4 to 42.3. Indiana moved ahead of the national manufacturing weekly hours of 42.1. Neighboring states were at 42.5 hours (May data).

**Avg. Weekly Manufacturing Production Hours (non seasonally adjusted)**





### IN Metropolitan Area Employment Estimates

| MSA                          | June 2000 | June 2016 | May 2017  | June 2017 | June 2017<br>Change | Change since<br>2000 | % Chg<br>since 2000 | Annual<br>Change | Annual %<br>Change |
|------------------------------|-----------|-----------|-----------|-----------|---------------------|----------------------|---------------------|------------------|--------------------|
| Elkhart-Goshen               | 130,100   | 132,700   | 137,600   | 138,500   | 900                 | 8,400                | 6.5%                | 5,800            | 4.4%               |
| Kokomo                       | 50,800    | 41,100    | 42,700    | 42,700    | 0                   | -8,100               | -15.9%              | 1,600            | 3.9%               |
| Fort Wayne                   | 218,700   | 217,000   | 223,400   | 225,100   | 1,700               | 6,400                | 2.9%                | 8,100            | 3.7%               |
| Indianapolis-Carmel-Anderson | 906,200   | 1,041,000 | 1,067,900 | 1,072,800 | 4,900               | 166,600              | 18.4%               | 31,800           | 3.1%               |
| Terre Haute                  | 76,700    | 69,200    | 71,700    | 71,200    | -500                | -5,500               | -7.2%               | 2,000            | 2.9%               |
| South Bend                   | 152,200   | 139,300   | 143,200   | 143,300   | 100                 | -8,900               | -5.8%               | 4,000            | 2.9%               |
| Gary Division                | 284,400   | 275,200   | 281,600   | 282,000   | 400                 | -2,400               | -0.8%               | 6,800            | 2.5%               |
| Columbus                     | 45,200    | 52,500    | 54,200    | 53,700    | -500                | 8,500                | 18.8%               | 1,200            | 2.3%               |
| Evansville                   | 162,800   | 158,600   | 160,800   | 161,200   | 400                 | -1,600               | -1.0%               | 2,600            | 1.6%               |
| Lafayette-West Lafayette     | 91,100    | 98,800    | 105,000   | 100,200   | -4,800              | 9,100                | 10.0%               | 1,400            | 1.4%               |
| Muncie                       | 56,900    | 50,300    | 51,200    | 51,000    | -200                | -5,900               | -10.4%              | 700              | 1.4%               |
| Bloomington                  | 69,800    | 71,900    | 72,400    | 71,900    | -500                | 2,100                | 3.0%                | 0                | 0.0%               |
| Michigan City                | 50,700    | 42,000    | 41,300    | 41,700    | 400                 | -9,000               | -17.8%              | -300             | -0.7%              |